

The Disaster Center is dedicated to the idea that disaster mitigation is cost effective and individuals pursuing their own interest are the greatest potential force for disaster reduction.

Please consider making a small donation to the Disaster Center



When disaster mitigation is cost effective, we are on the road to bringing disasters to an end.



# **FEMA**

## **Daily Operations Briefing**

**Saturday, July 18, 2015**

**8:30 a.m. EDT**

# Significant Activity: July 17-18



**Significant Events:** Severe Weather – Midwest (July 16-17) *FINAL*

## **Tropical Activity:**

- Atlantic: Disturbance #1 – Low (near 0%)
- Eastern Pacific: TS Dolores; Disturbance #1 – Low (near 20%)
- Central Pacific: Disturbance #1 – Low (near 0%); Disturbance #2 – Low (near 0%)
- Western Pacific: TD Halola

## **Significant Weather:**

- Slight risk of severe thunderstorms – Great Lakes to the Middle Mississippi Valley
- Heavy rain possible – Parts of the Middle Mississippi Valley
- Heat advisory – Portions of Central/Southern Plains and Middle Mississippi Valley to the Southeast
  
- Enhanced Fire Weather Areas: None
- Red Flag Warnings: None

## **Space Weather:**

- Past 24 hours: None occurred ; next 24 hours: None predicted

## **Declaration Activity:**

- Amendment No. 8 for FEMA-4223-DR-TX
- North Fire – FEMA-XXXX-FM-CA

# Severe Weather – Midwest (July 16-17)



## Situation (FINAL)

- Strong thunderstorms moved through portions of west central Illinois producing heavy rain, flash flooding, damaging winds, and few tornados
- The NWS's Storm Prediction Center reported five tornadoes primarily affecting Henderson, Warren, Rock Island and Tazewell counties in west central Illinois

## Impacts

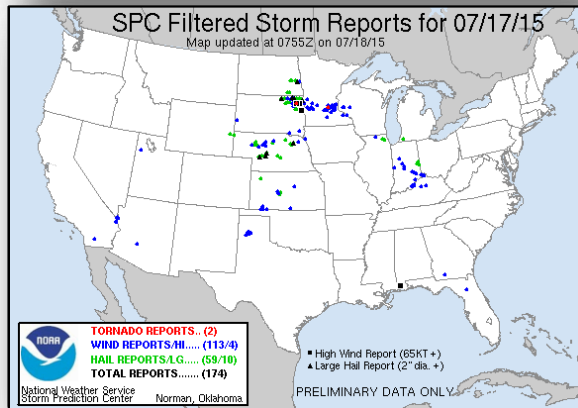
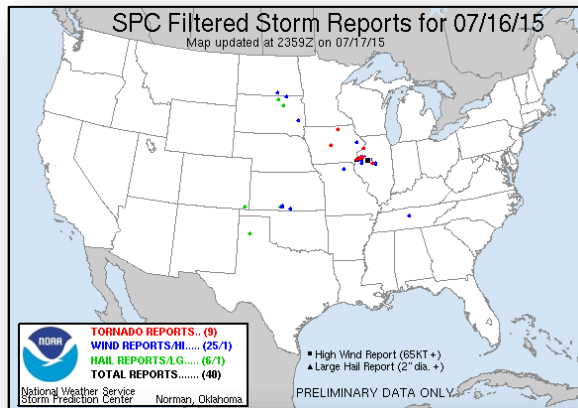
- No significant, widespread impacts reported; no shortfalls/unmet needs
- Downed trees/power lines and limited/isolated property damage reported
- Approx. 1k customers are without power across IL (*DOE EAGLE-I; as of 5:30 a.m. EDT*)
- Four (+2) shelters are open with 59 (+5) occupants (*ARC Report 4:30 a.m. EDT*)
- Two injuries; no fatalities (*FEMA Region V*)

## State/Local Response

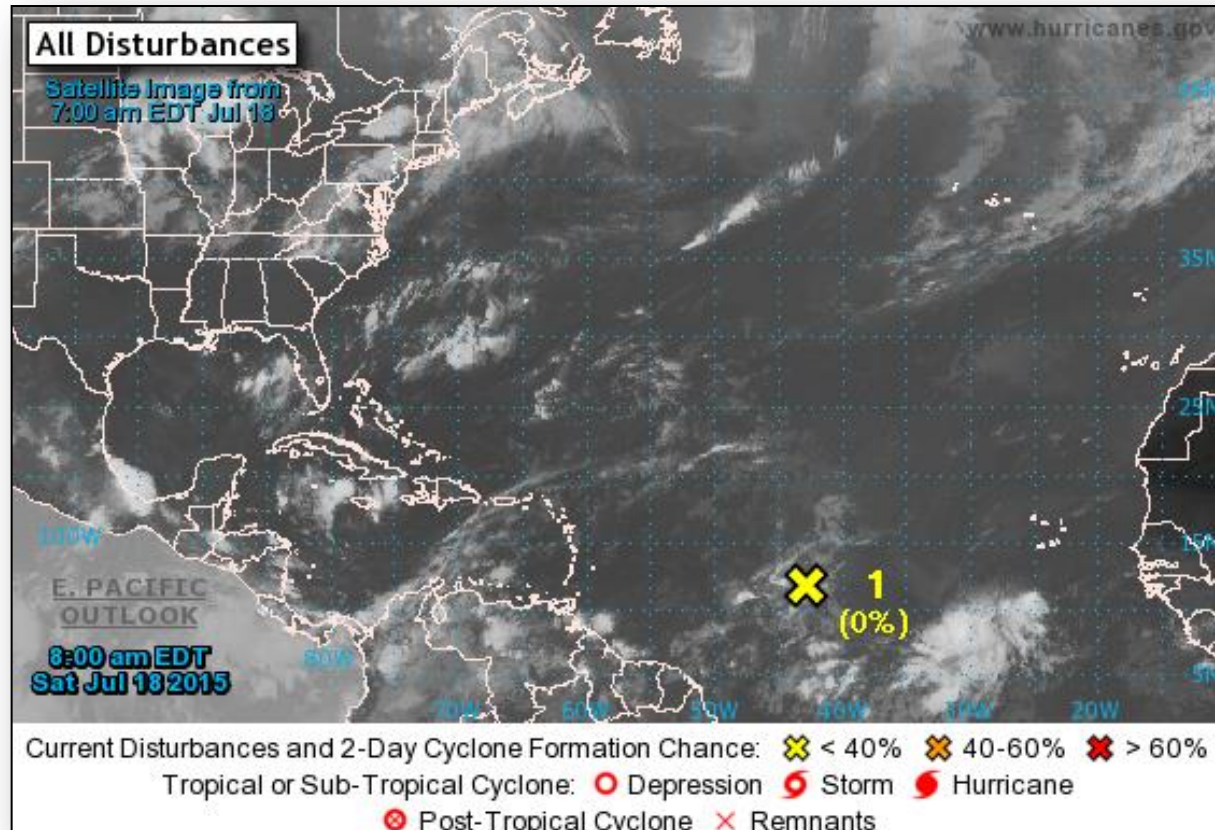
- IL EOC is at Level III (monitoring) for severe weather & flooding
- Local damage assessments ongoing

## FEMA Response

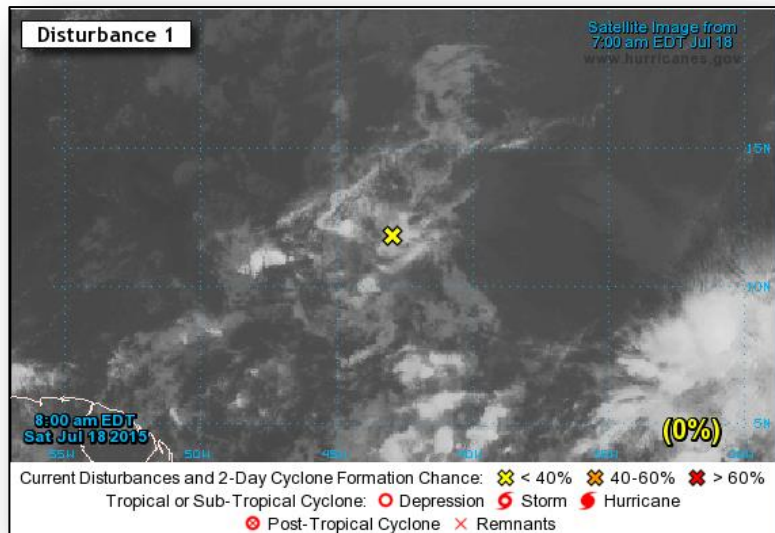
- Region V RRCC returned to Normal Operations; RWC continues to monitor the situation
- Regional IMAT and LNO have demobilized from the IL EOC
- No requests for FEMA assistance



# 2-Day Tropical Outlook – Atlantic



# Atlantic – Tropical Outlook



## **Disturbance #1:** (as of 8:00 a.m. EDT)

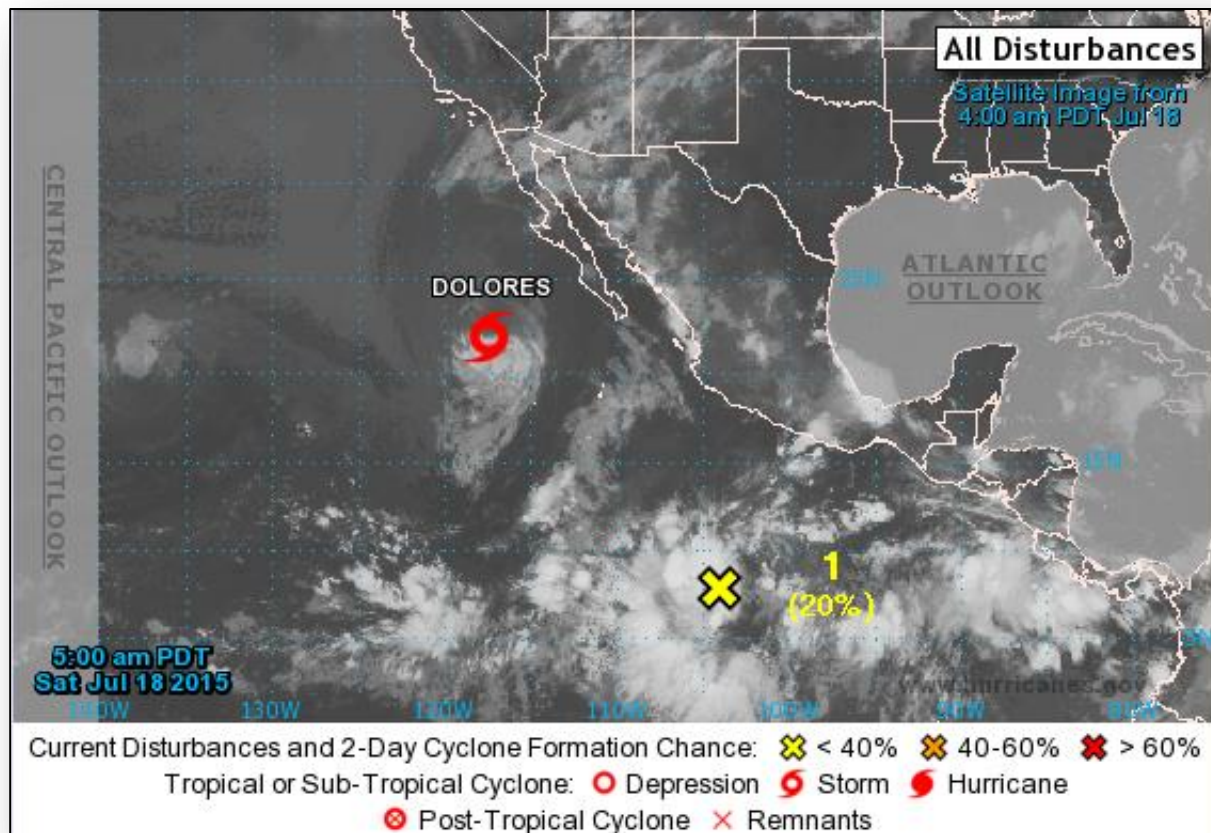
- Tropical wave located midway between Africa and Windward Islands
- Producing disorganized cloudiness and showers
- Conditions expected to be increasingly unfavorable for Development as system moves W at 15-20 mph
- Formation chance next 48 hours: Low (near 0%)
- Formation chance next 5 days: Low (near 0%)



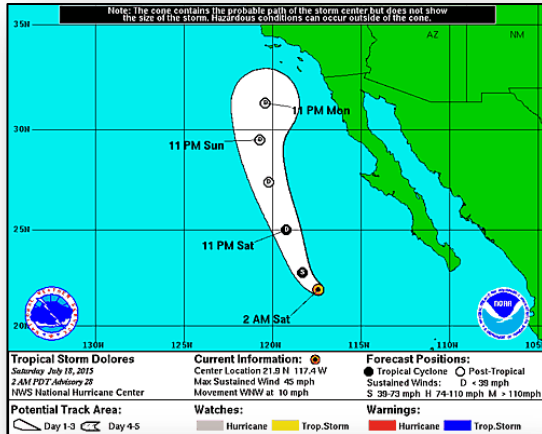
# 2-Day Tropical Outlook – Eastern Pacific



FEMA

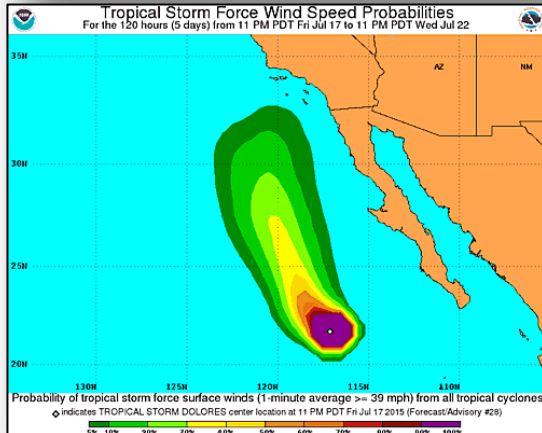


# Eastern Pacific – Tropical Storm Dolores



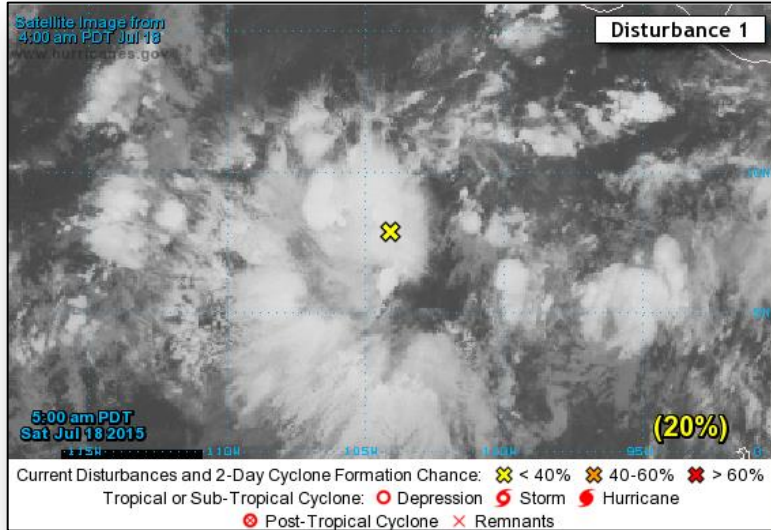
## **Tropical Storm Dolores:** (Advisory #28 as of 5:00 a.m. EDT)

- Located 380 miles WSW of Cabo San Lazaro, Mexico
- Moving WNW at 10 mph
- Maximum sustained winds 45 mph with higher gusts
- Dolores path is expected to deliver tropical moisture to parts of the desert southwest this weekend
- Additional weakening is forecast
- Dolores forecast to weaken to Tropical Depression late Saturday
- Tropical storm-force winds extend outward 90 miles
- No coastal watches or warnings in effect





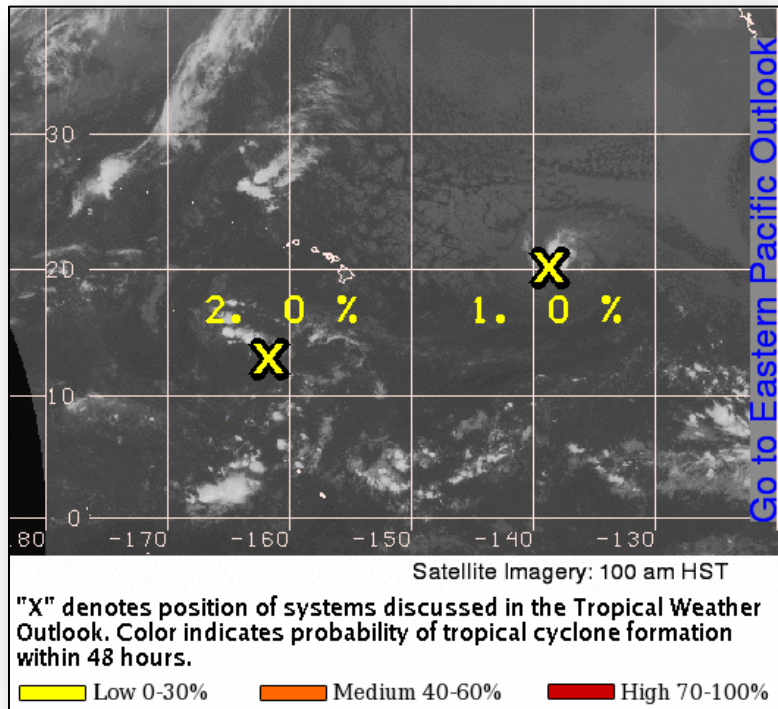
# Eastern Pacific – Tropical Outlook



## Disturbance #1: (as of 8:00 a.m. EDT)

- Located 700 miles SSW of Acapulco, Mexico
- Environmental conditions expected to be conducive for gradual development
- Tropical Depression likely to form early next week
- Moving slowly NW at 10 mph; well offshore of Mexico coast
- Formation chance next 48 hours: Low (near 20%)
- Formation chance next 5 days: High (80%)

# Central Pacific – Tropical Outlook



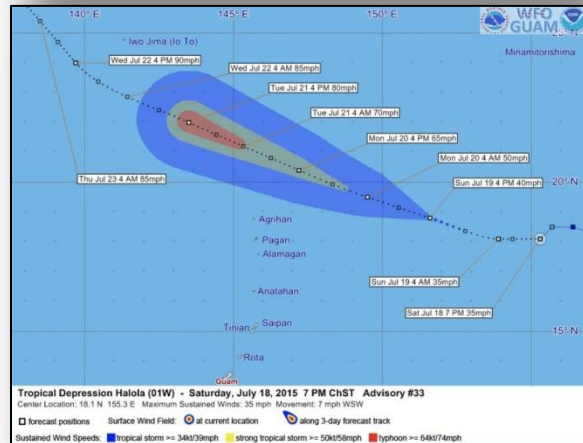
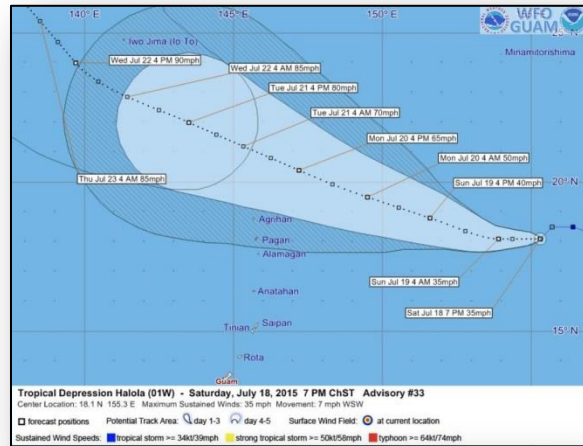
## **Disturbance #1:** *(as of 8:00 a.m. EDT)*

- Remnants of former Tropical Depression Enrique
- Located 1,020 miles E of Hilo, HI
- Conditions not expected to be favorable for development
- Remaining nearly stationary
- Formation chance next 48 hours: Low (near 0%)

## **Disturbance #2:** *(as of 8:00 a.m. EDT)*

- Disorganized showers and isolated thunderstorms
- Located 650 miles SSW of Honolulu, HI
- Conditions not expected to be conducive for development
- Moving W at 10-15 mph next two days
- Formation chance next 48 hours: Low (near 0%)

# Western Pacific – TD Halola



## Tropical Depression Halola : (Advisory #33 as of 5:00 a.m. EDT)

- Located 770 miles ENE of Guam; 665 miles ENE of Saipan
- Moving WSW at 7 mph; expected to turn WNW by Sunday
- Max sustained winds 35mph; gradual intensification expected
- May become a Tropical Storm again by Sunday night
- Halola anticipated to head north of the Mariana Islands Monday

# North Fire – California



Fire Name	Location	Acres burned	% Contained	Est. Full Containment	FMAG	Structures Lost / Threatened	Fatalities / Injuries
North Fire	San Bernardino County	3,500	5%	N/A	Approved July 17	4 / 700 Homes	0 / TBD

## Situation

- FMAG XXXX-FM-CA approved July 17, 2015
- Fire began Friday, July 17 near Baldy Mesa (pop. 30k)
- Fire burning on Federal, State, and private land
- 5 residences destroyed; 700 residences threatened
- Mandatory evacuation for 7,600 people
- One shelter opened with 22 occupants (*ARC report as of 4:30 a.m. EDT*)
- Fire jumped I-15 Interstate burning 20 vehicles and causing multiple minor burn injuries

## Response

- CA EOC remains at Partial Activation for drought conditions
- FEMA Region IX at Watch/Steady State



 San Bernardino County

# FMAG Requests and Declarations



Action (since last report)			Total	FMAG No. and State	
Requests DENIED			0		
Requests APPROVED			1	FEMA-XXXX-FM-CA	
Approved FMAG Data					
Year	Current YTD	MTD	Monthly Average	Cumulative Acres Burned YTD	Cumulative Denied FMAGs YTD
2015	8	6	7	18,040	2
Year	Total Previous FY	++ Yearly Average		Total Acres Burned Previous Year	Total Denied FMAGs Previous Year
2014	31	37		152,648	2
* Reflects the 3-year average for current month/ ** Reflects 3-year total average					

# Disaster Requests & Declarations



Declaration Requests in Process		Requests APPROVED (since last report)	Requests DENIED (since last report)
3	Date Requested	0	0
KS – DR Severe Storms, Tornadoes, and Flooding	July 1, 2015		
MD – DR Civil Unrest (Appeal)	July 7, 2015		
NJ – DR Severe Storms	July 13, 2015		

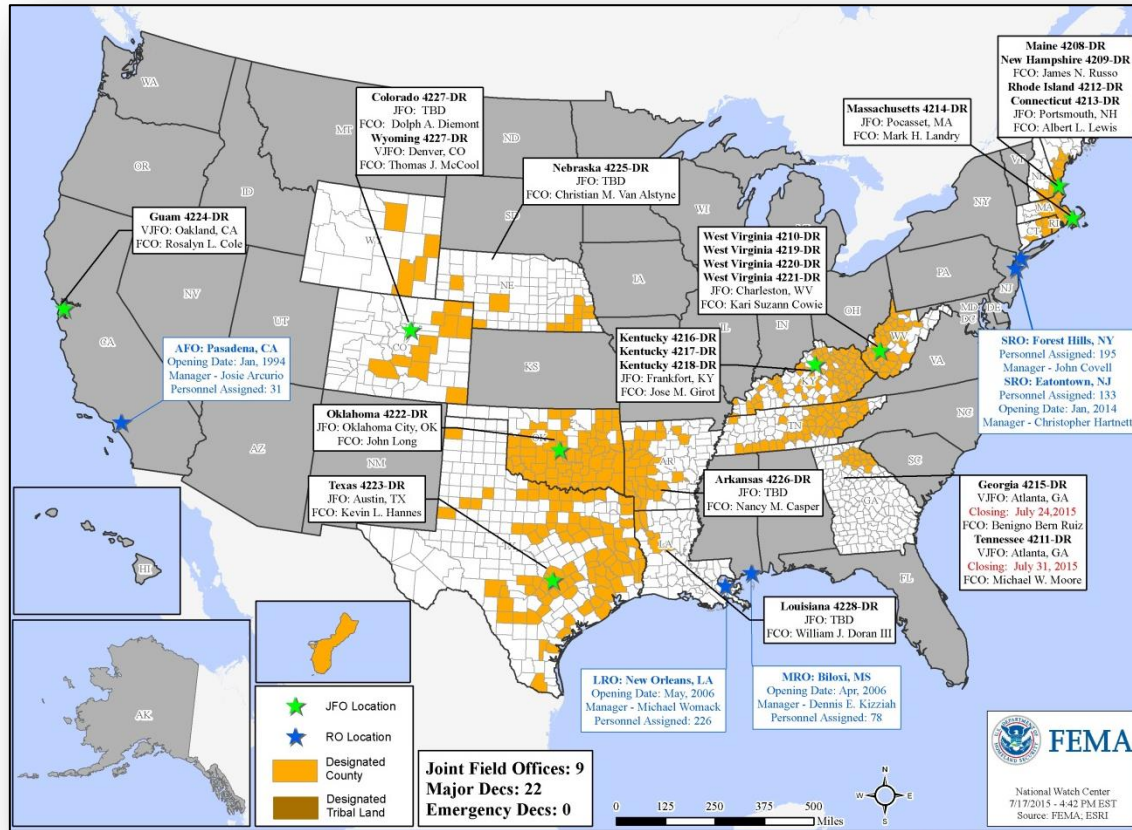


# Disaster Amendments



Amendment	Effective Date	Action
Amendment No.8 FEMA-4223-DR-TX	July 17, 2015	Added 4 counties for Individual Assistance

# Open Field Offices as of July 18

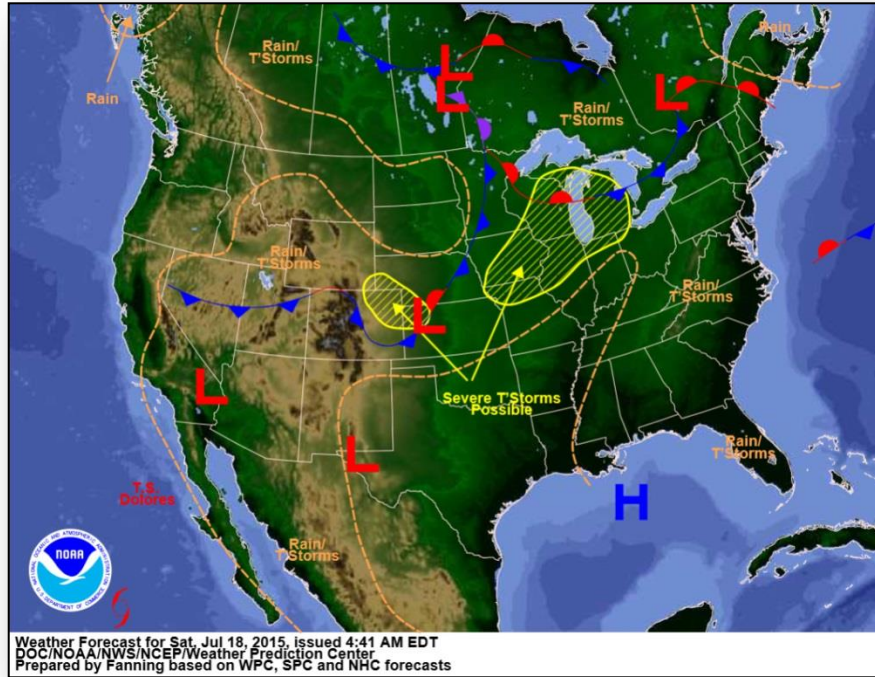


# Joint Preliminary Damage Assessments

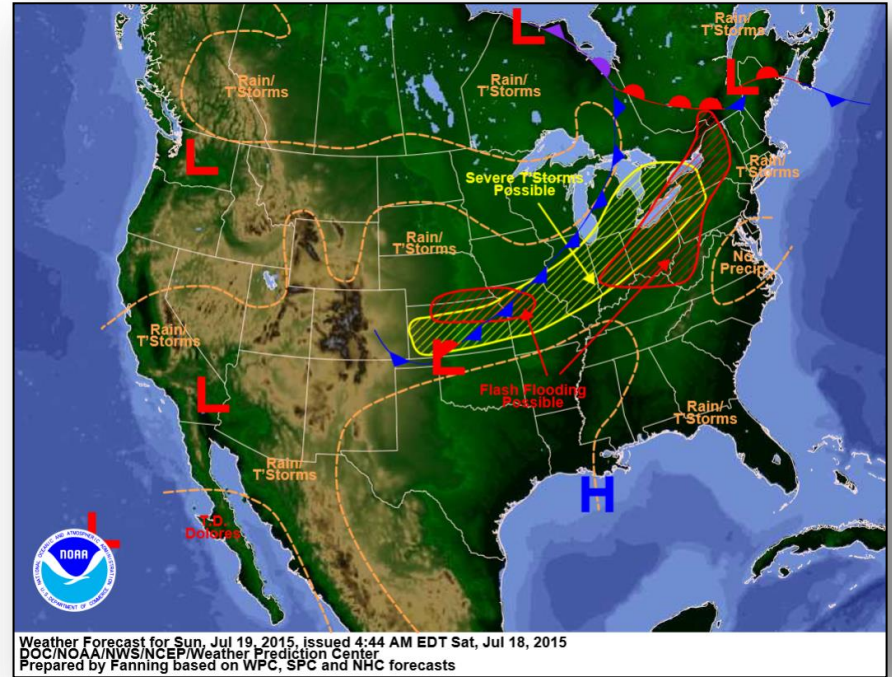


Region	State / Location	Event	IA/PA	Number of Counties		Start – End
				Requested	Complete	
III	WV	Severe Weather July 13-14, 2015	IA	3	0	7/17 – TBD
			PA	10	0	7/17 – TBD
IV	KY	Severe Storms & Flooding July 13-15, 2015	IA	2	0	7/18 – TBD
VI	OK	Severe Storms, Tornadoes & Flooding May 5 - June 4, 2015	IA	55	49	5/26 – TBD
			PA	63	63	6/26 – 7/7
	TX	Severe Storms, Tornadoes & Flooding May 4 - June 19, 2015	IA	49	48	5/29 – TBD
			PA	117	86	5/29 – TBD
	TX	Tropical Storm Bill June 15-20, 2015	PA	5	4	7/15 – TBD
VII	MO	Severe Weather, Tornadoes, High Winds, Heavy Rains, Flooding & Flash Flooding May 15 and continuing	IA	15	9	7/14 – TBD
			PA	69	33	6/29 – TBD
	IA	Severe Storms June 22, 2015 and continuing	PA	17	0	7/14 – TBD
VIII	SD	Severe Storms and Flooding May 24 – June 6	PA	17 (+3) counties 3 tribes	15 (+2) counties 2 tribes	7/13 – TBD

# National Weather Forecast



*Today*

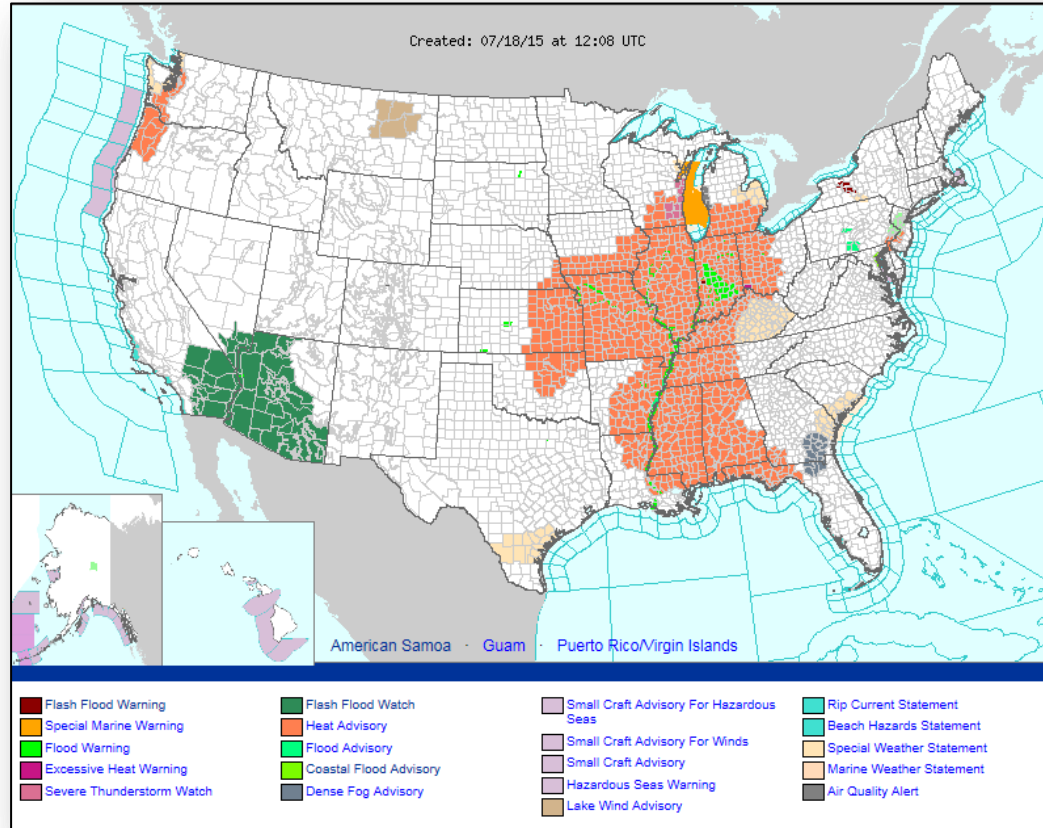


*Tomorrow*

# Active Watches/Warnings



FEMA

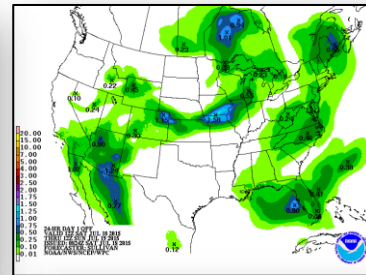
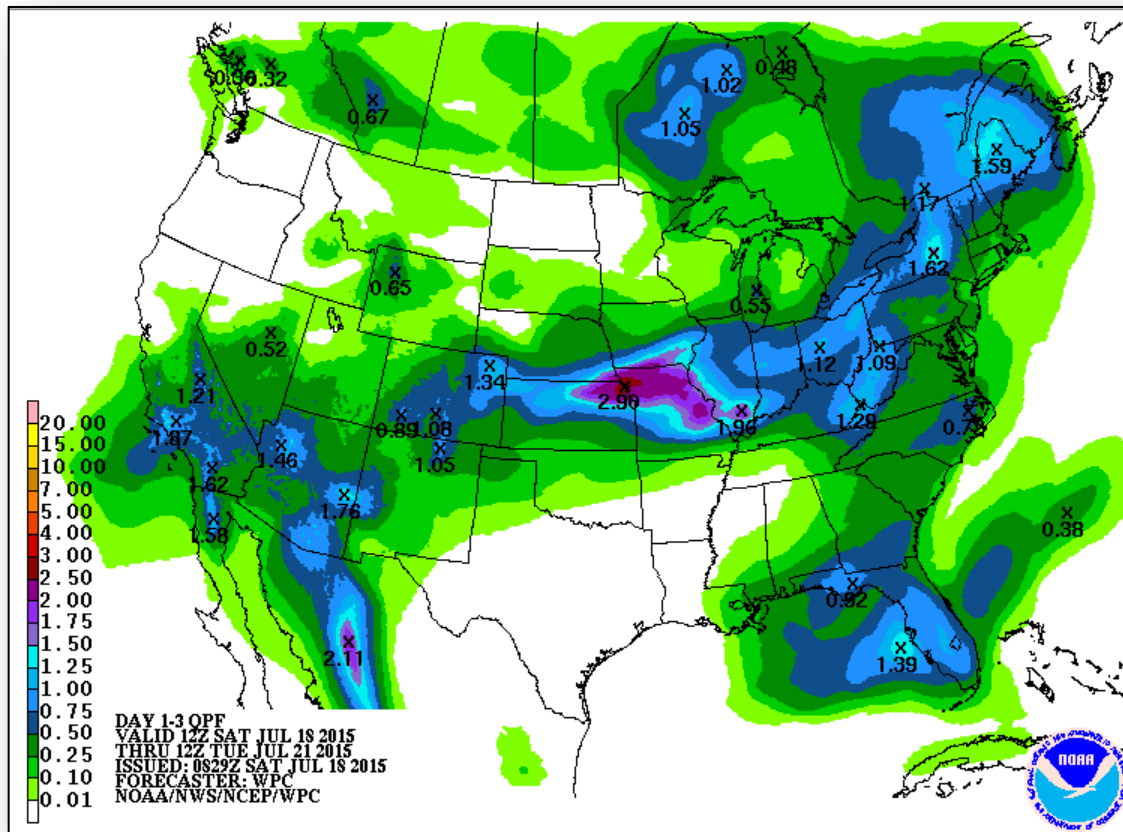




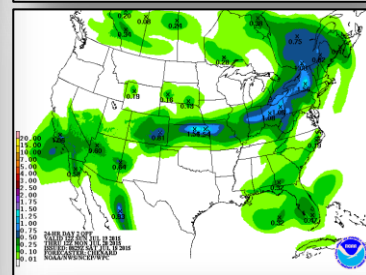
# Precipitation Forecast, 1-3 Day



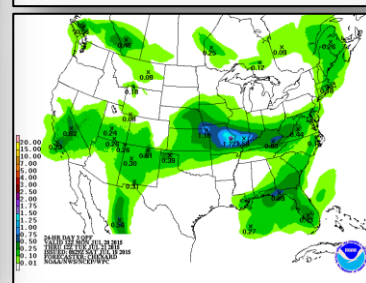
FEMA



Day 1



Day 2



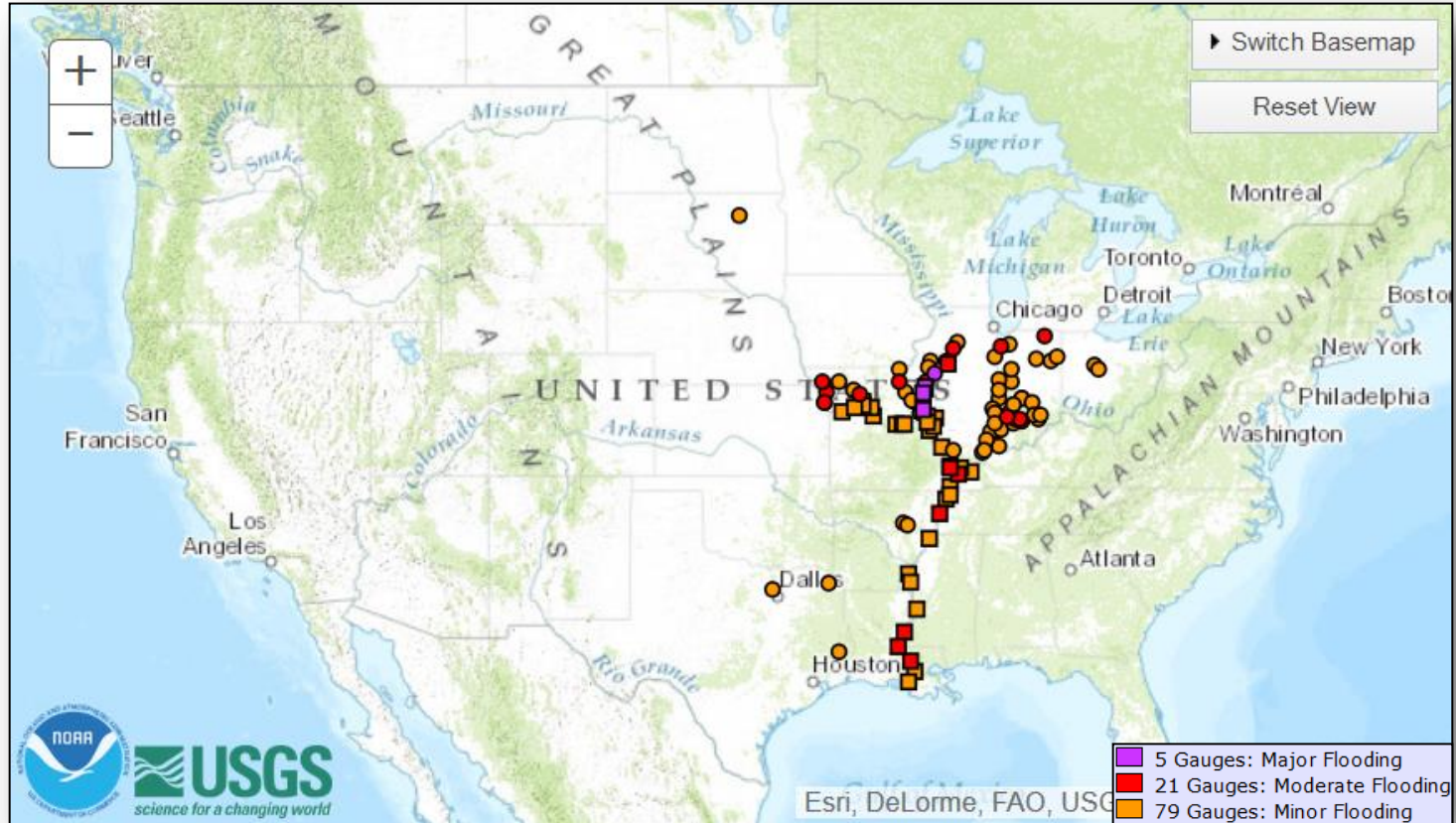
Day 3



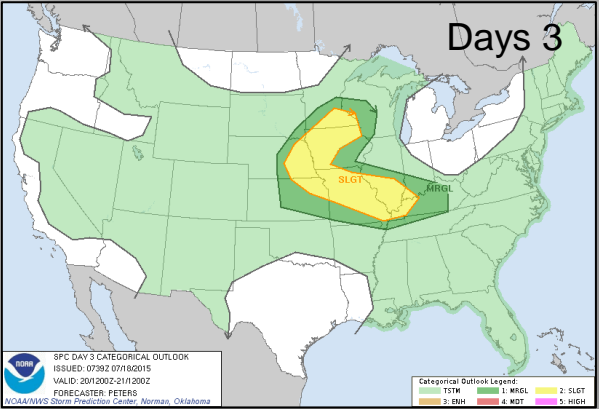
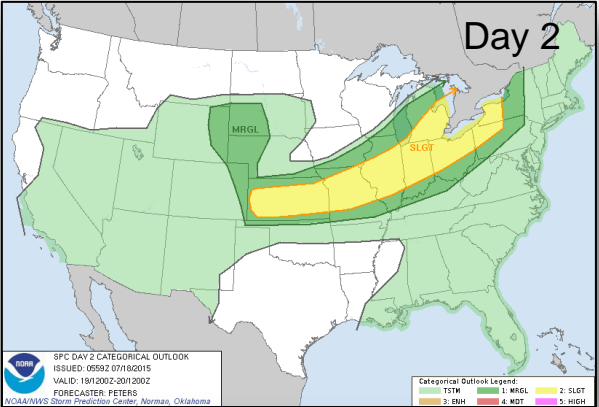
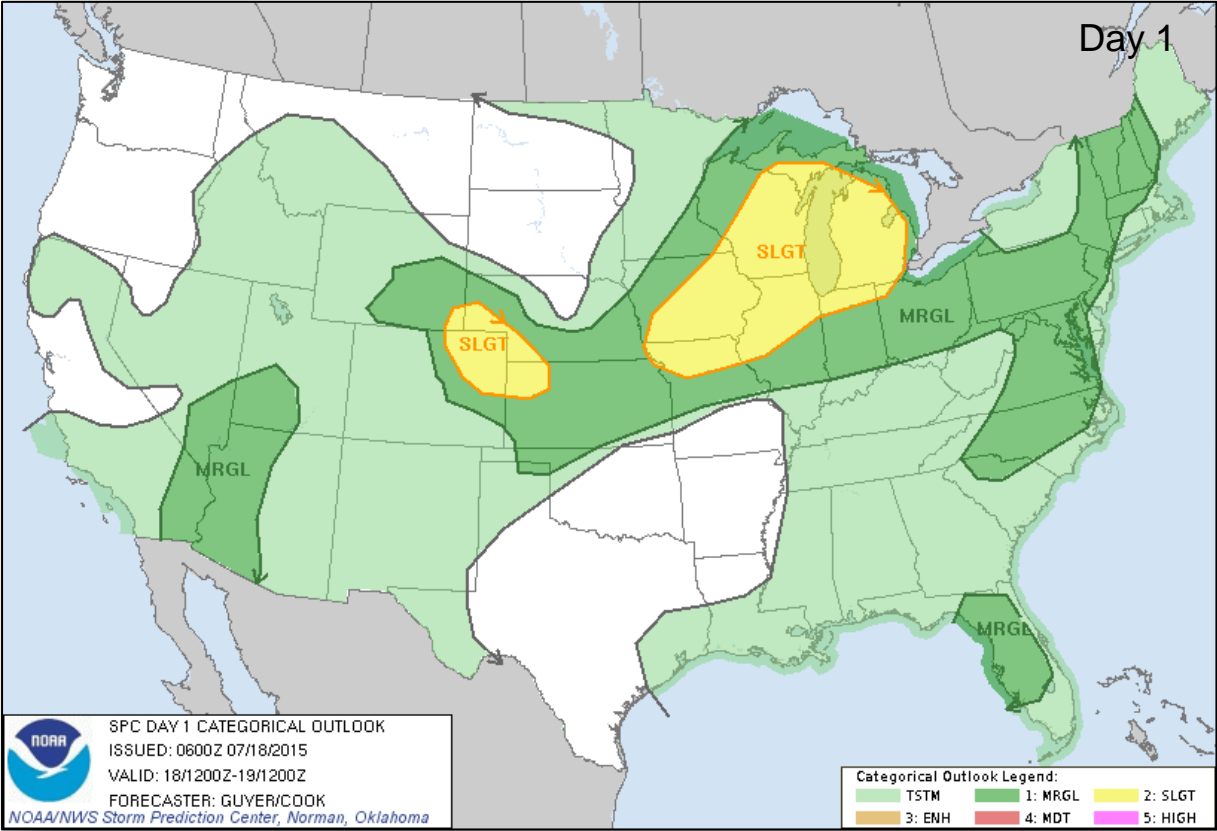
# River Forecast



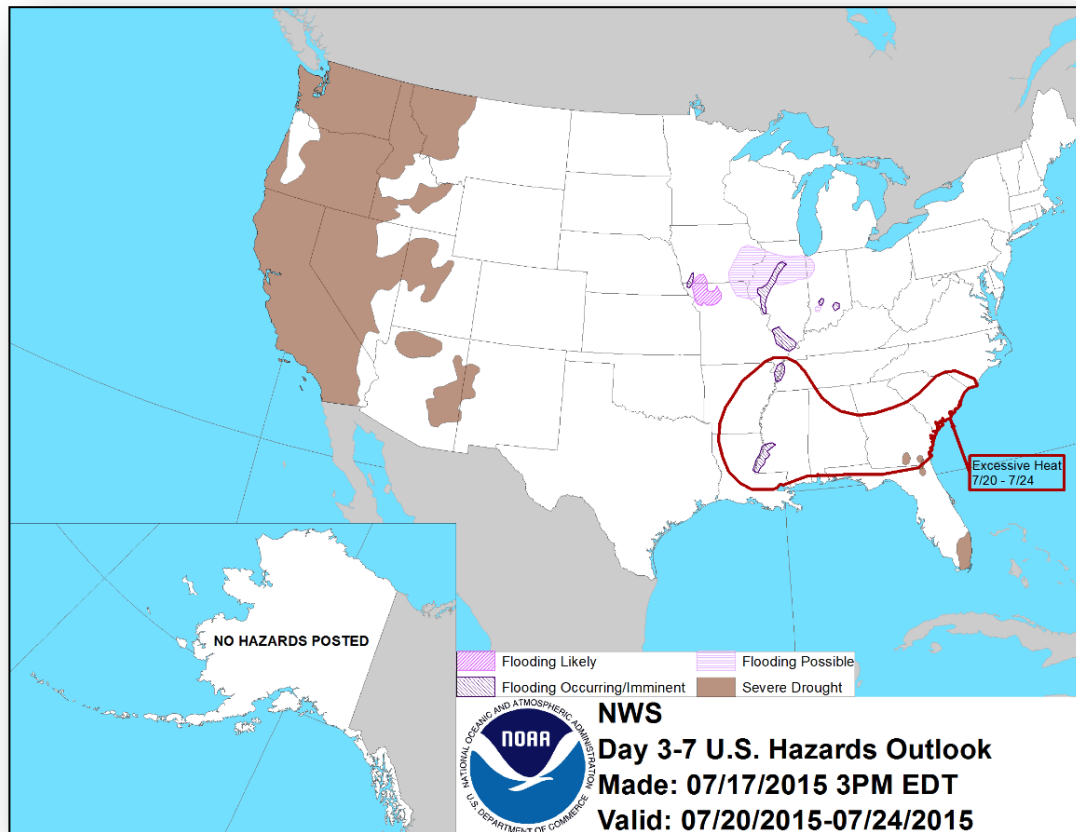
FEMA



# Severe Weather Outlook, Days 1-3



# Hazard Outlook, July 20-24

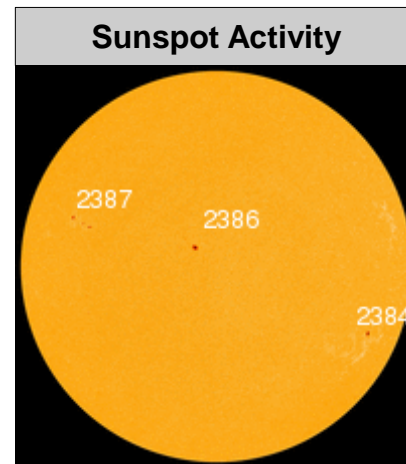
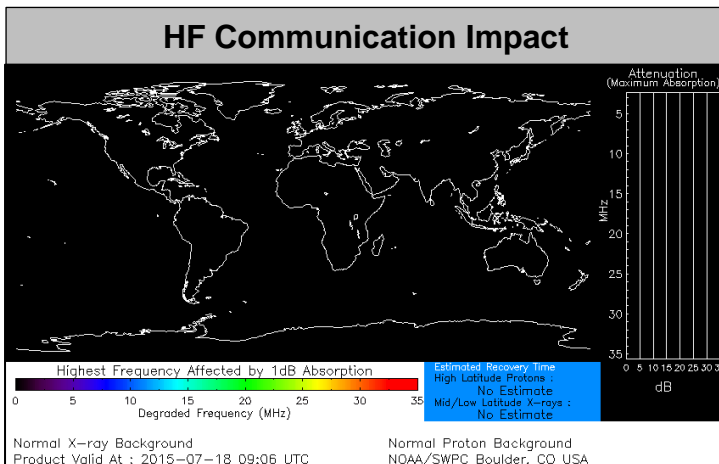


# Space Weather



FEMA

None	Past 24 Hours	Current	Next 24 Hours
Space Weather Activity:	None	None	None
• Geomagnetic Storms	None	None	None
• Solar Radiation Storms	None	None	None
• Radio Blackouts	None	None	None



# FEMA Readiness – Deployable Teams /Assets



Deployable Teams/Assets									
Resource	Status	Total	FMC Available		Partially Available	Not Available	Detailed, Deployed, Activated	Comments	Rating Criterion
FCO		35	10	29%	0	1	24		OFDC Readiness: FCO    Green    Yellow    Red Type 1   3+            2            1 Type 2   4+            3            2 Type 3   4              3            2 FDRC    3              2            1
FDRC		9	5	56%	0	0	8		
US&R		28	27	96%	0	1	0	NM-TF1 (Red) – Personnel shortages	<ul style="list-style-type: none"> <li>• Green = Available/FMC</li> <li>• Yellow = Available/PMC</li> <li>• Red = Out-of-Service</li> <li>• Blue = Assigned/Deployed</li> </ul>
National IMAT		3	3	100%	0	0	0		<ul style="list-style-type: none"> <li>• Green: 3 avail</li> <li>• Yellow: 1-2 avail</li> <li>• Red: 0 avail (<i>Individual N-IMAT red if 50% of Section Chiefs and/or Team Leader is unavailable for deployment.</i>)</li> </ul>
Regional IMAT		13	5	38%	0	4	4	<b>Deployed (Blue):</b> RII (Team A) supporting FEMA-4223-DR-TX RV to RVI supporting severe weather/flooding RVI (Team 1) to TX & personnel to OK RVIII (Team 1) supporting FEMA-4227-DR-WY  <b>Not Mission Capable (Red):</b> <u>Personnel shortages/staff adjustments</u> R1 (Team 1); RIV (Team 3); RVI (Team 2); RIX (Team 1)	<ul style="list-style-type: none"> <li>• Green: 7 or more avail</li> <li>• Yellow: 4 - 6 teams available</li> <li>• Red: &gt; 8 teams deployed/unavailable</li> </ul> <i>R-IMAT also red if TL Ops/Log Chief is unavailable &amp; has no qualified replacement</i>
MCOV		60	35	58%	0	7	18	14 units in TX 4 units in OK	<ul style="list-style-type: none"> <li>• Green = 80 – 100% avail</li> <li>• Yellow = 60 – 79% avail</li> <li>• Red = 59% or below avail</li> <li>• Readiness remains 95%</li> </ul>

# FEMA Readiness – National/Regional Teams



National/Regional Teams									
Resource	Status	Total	FMC Available		Partially Available	Not Available	Status	Comments	Rating Criterion
NWC		5	5	100%	0	0	Not Activated		• Green = FMC • Yellow = PMC • Red = NMC
NRCC		2	344	89%	0	44	Not Activated		
HLT		1	N/A	N/A	0	0	Activated		
DEST							Not Activated		
RRCCs		10	10	100%	0	0	Not Activated		
RWCs/MOCs		10	10	100%	0	0	Not Activated		





# FEMA

**FEMA's mission is to support our citizens and first responders to ensure that as a nation we work together to build, sustain, and improve our capability to prepare for, protect against, respond to, recover from, and mitigate all hazards.**