

The Disaster Center is dedicated to the idea that disaster mitigation is cost effective and individuals pursuing their own interest are the greatest potential force for disaster reduction.

Please consider making a small donation to the Disaster Center



When disaster mitigation is cost effective, we are on the road to bringing disasters to an end.



# **FEMA**

## **Daily Operations Briefing**

**Sunday, July 19, 2015**

**8:30 a.m. EDT**

# Significant Activity: July 18-19



**Significant Events:** None

**Tropical Activity:**

- Atlantic: Tropical cyclone activity is not expected during the next 48 hours
- Eastern Pacific: Post-Tropical Cyclone Dolores; Disturbance #1 – High (70%)
- Central Pacific: No tropical cyclones are expected through Monday night
- Western Pacific: TD Halola

**Significant Weather:**

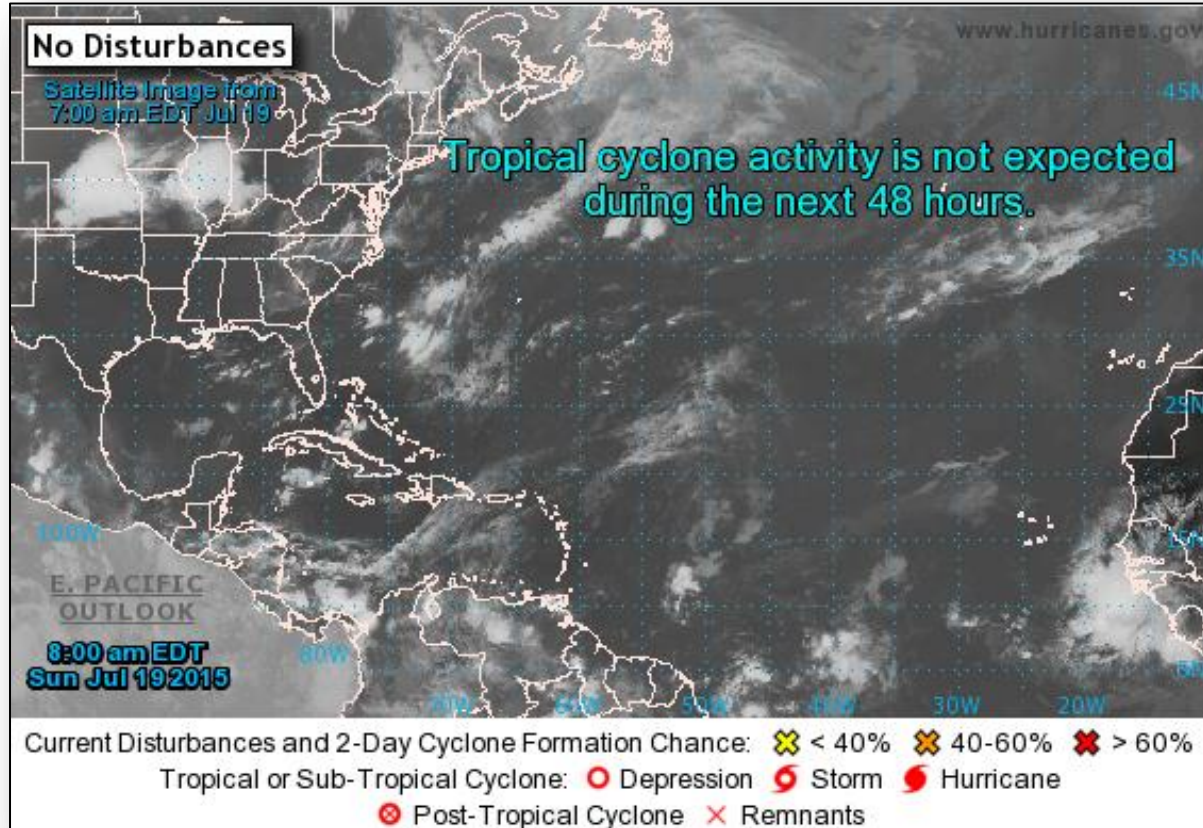
- Slight risk of severe thunderstorms – parts of northern New England to the Ohio Valley and parts of the Central Plains
- Heavy rain possible – parts of the Ohio Valley/Central Appalachians to the Middle Mississippi Valley
- Heat advisory – Portions of Central/Southern Plains, Middle/Lower Mississippi Valley, Southeast and the Mid-Atlantic
- Enhanced Fire Weather Areas: None
- Red Flag Warnings: None

**Space Weather:**

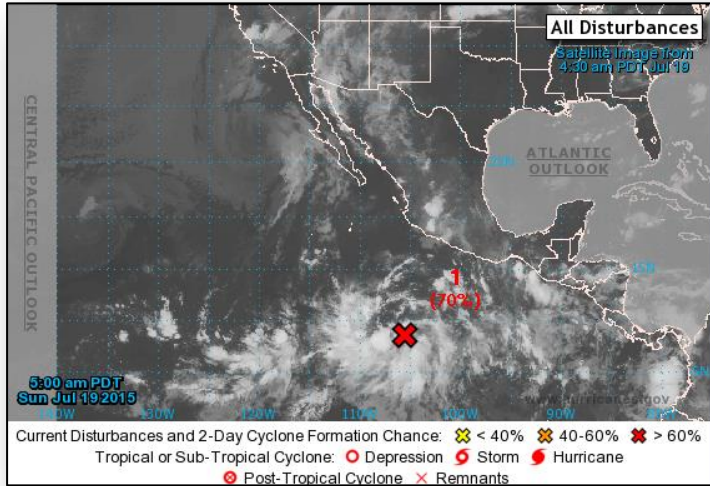
- Past 24 hours: None occurred ; next 24 hours: None predicted

**Declaration Activity:** None

# 2-Day Tropical Outlook – Atlantic



# 2-Day Tropical Outlook – Eastern Pacific



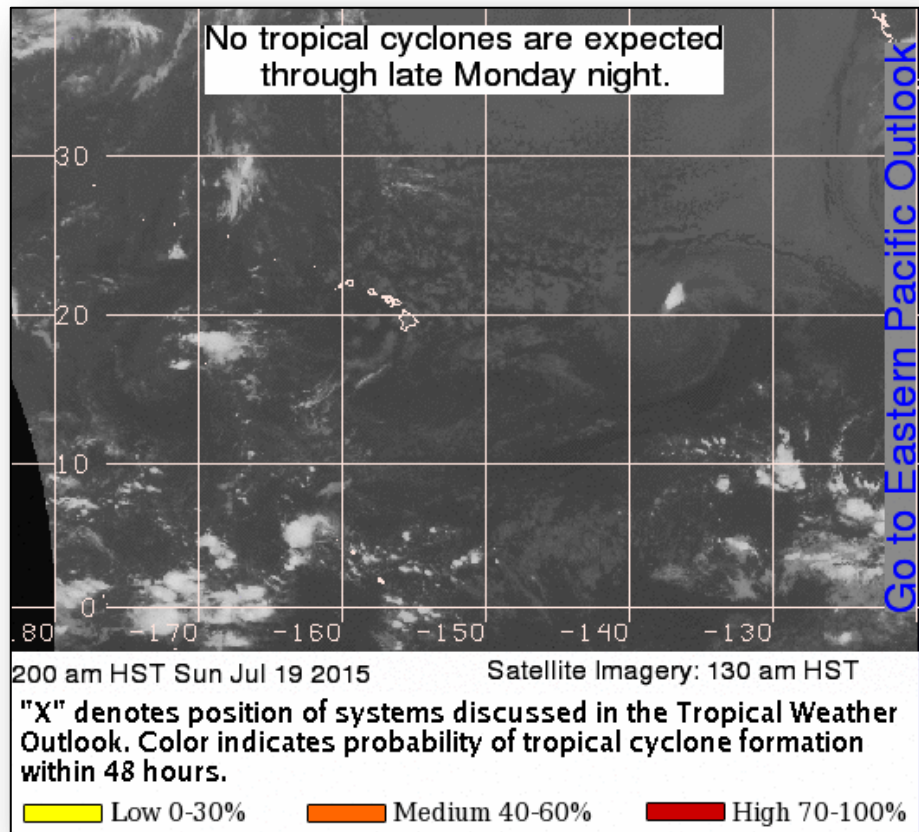
## **Post-Tropical Cyclone Dolores:** *(Advisory #31, as of 2:00 a.m. EDT)*

- NHC issued its final advisory on Post-Tropical Cyclone Dolores

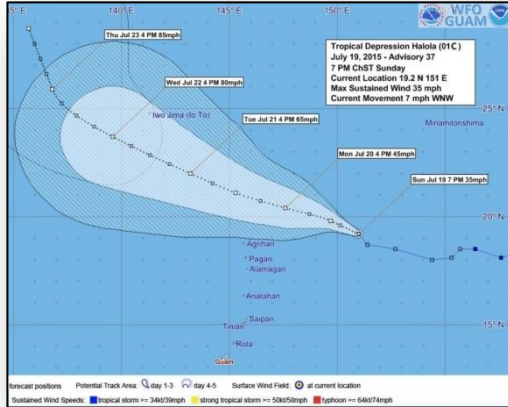
## **Disturbance #1:** *(as of 8:00 a.m. EDT)*

- Showers and thunderstorms showing signs of organization
- Located 700 miles SW of Acapulco, Mexico
- Tropical depression is likely to form during the next day or two
- Moving NW at about 10 mph well offshore of the coast of Mexico
- Formation chance next 48 hours: Medium (70%)
- Formation chance next 5 days: High (90%)

# Central Pacific – Tropical Outlook

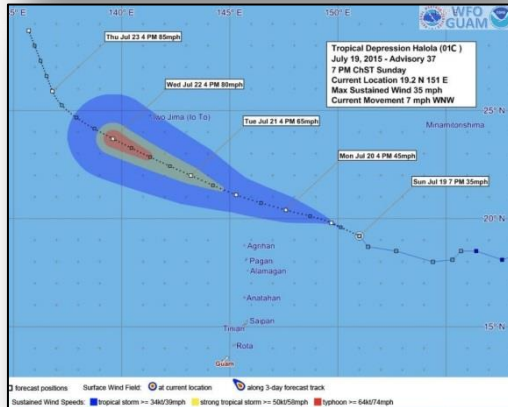


# Western Pacific – TD Halola



## Tropical Depression Halola : (Advisory #37 as of 5:00 a.m. EDT)

- Located 575 miles NE of Guam; 345 miles E of Agrihan, NMI
- Moving WNW at 7 mph; expected to continue next few days
- Max sustained winds 35 mph; gradual intensification expected
- May become a Tropical Storm again by Monday
- Expected to pass north of Agrihan, NMI Monday evening





# Wildfire Summary



Fire Name (County)	FMAG #	Acres burned	% Contained Est. Containment date	Evacuations (Residents)	Structures Threatened	Structures Destroyed	Fatalities / Injuries
California (1)							
North (FINAL) (San Bernardino County)	Approved July 17	3,500	45% (+40)	Lifted	700 Homes	At least 7 homes	0/1

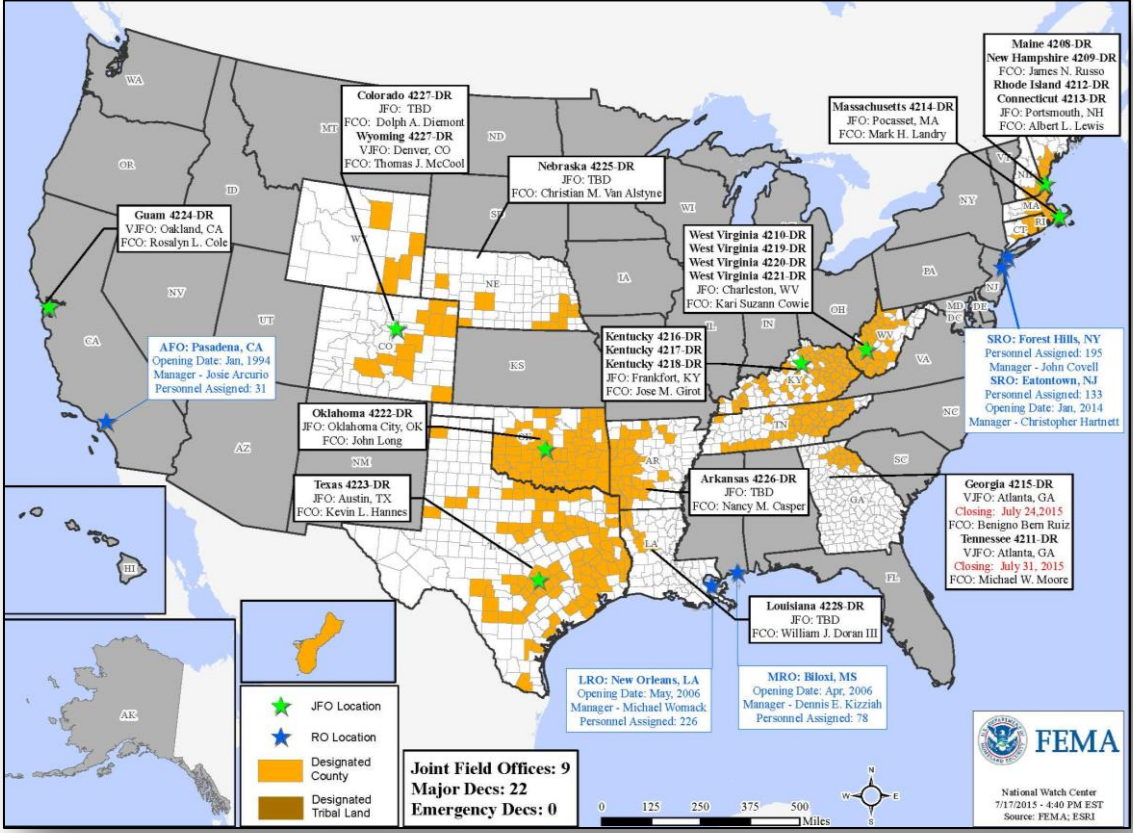


# Disaster Requests & Declarations



Declaration Requests in Process		Requests APPROVED (since last report)	Requests DENIED (since last report)
3	Date Requested	0	0
KS – DR Severe Storms, Tornadoes, and Flooding	July 1, 2015		
MD – DR Civil Unrest (Appeal)	July 7, 2015		
NJ – DR Severe Storms	July 13, 2015		

# Open Field Offices as of July 19

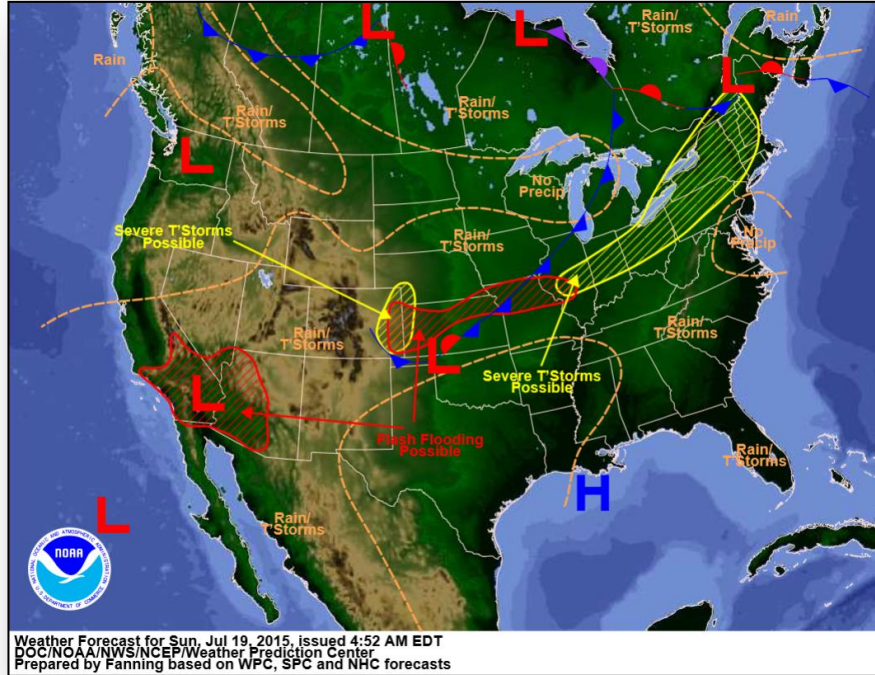


# Joint Preliminary Damage Assessments

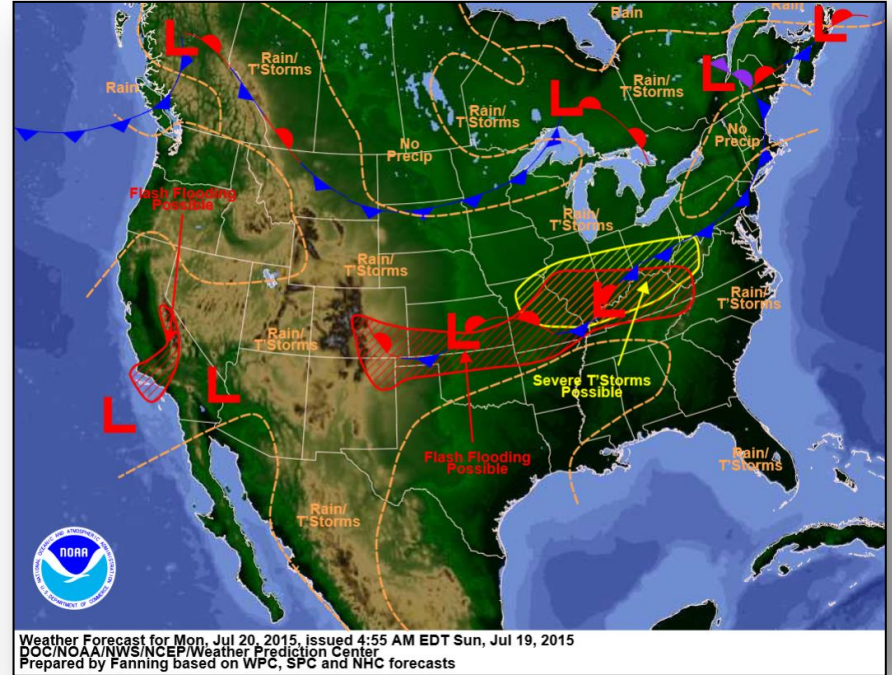


Region	State / Location	Event	IA/PA	Number of Counties		Start – End
				Requested	Complete	
III	WV	Severe Weather July 13-14, 2015	IA	3	0	7/17 – TBD
			PA	10	0	7/17 – TBD
IV	KY	Severe Storms & Flooding July 13-15, 2015	IA	2	0	7/18 – TBD
VI	OK	Severe Storms, Tornadoes & Flooding May 5 - June 4, 2015	IA	55	49	5/26 – TBD
			PA	63	63	6/26 – 7/7
	TX	Severe Storms, Tornadoes & Flooding May 4 - June 19, 2015	IA	49	48	5/29 – TBD
			PA	117	86	5/29 – TBD
	TX	Tropical Storm Bill June 15-20, 2015	PA	5	4	7/15 – TBD
VII	MO	Severe Weather, Tornadoes, High Winds, Heavy Rains, Flooding & Flash Flooding May 15 and continuing	IA	15	13 (+4)	7/14 – TBD
			PA	69	53 (+20)	6/29 – TBD
	IA	Severe Storms June 22, 2015 and continuing	PA	17	0	7/14 – TBD
VIII	SD	Severe Storms and Flooding May 24 – June 6	PA	14 counties 3 tribes	14 (+1) counties 3 (+1) tribes	7/13 – 7/17
		Severe Storms and Flooding May 9 – June 6, 2015	IA	1	0	7/20 – TBD
			PA	1	0	TBD – TBD

# National Weather Forecast



*Today*

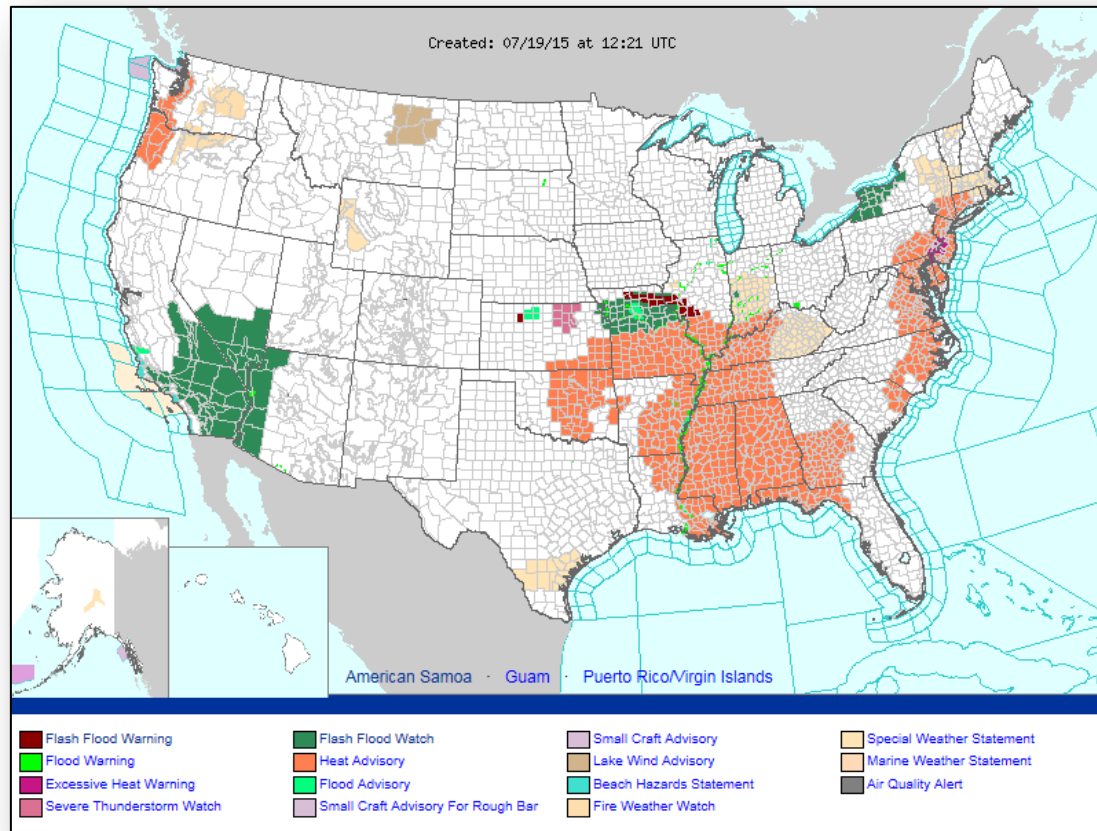


*Tomorrow*

# Active Watches/Warnings



FEMA

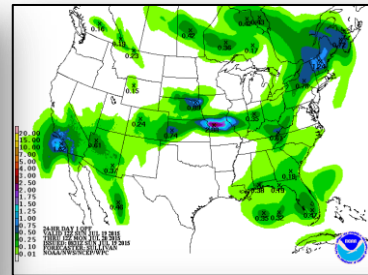
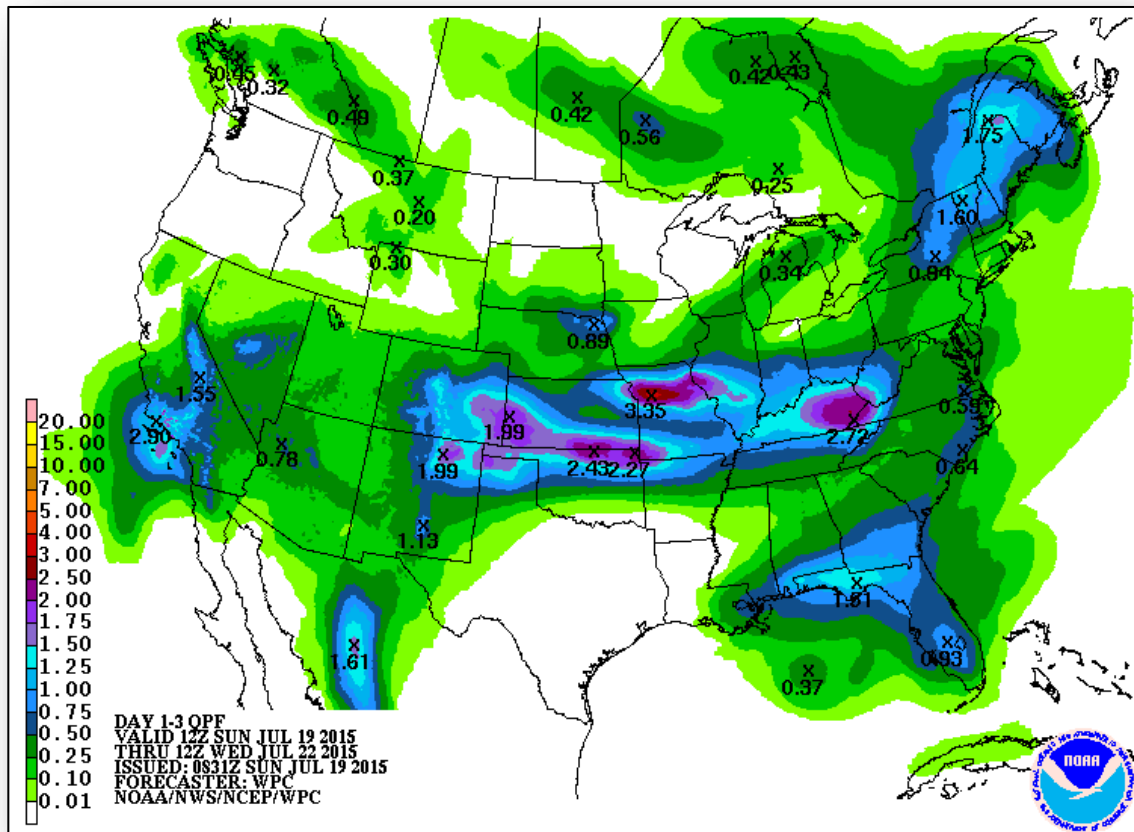




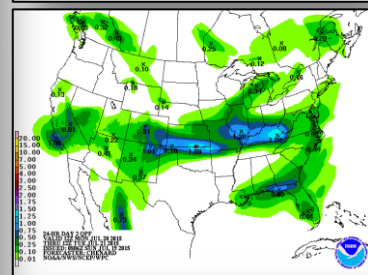
# Precipitation Forecast, 1-3 Day



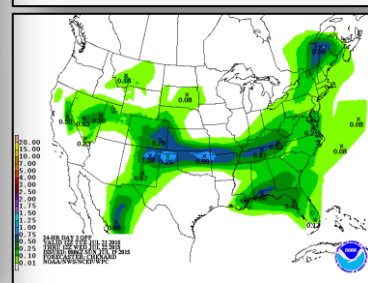
FEMA



Day 1



Day 2

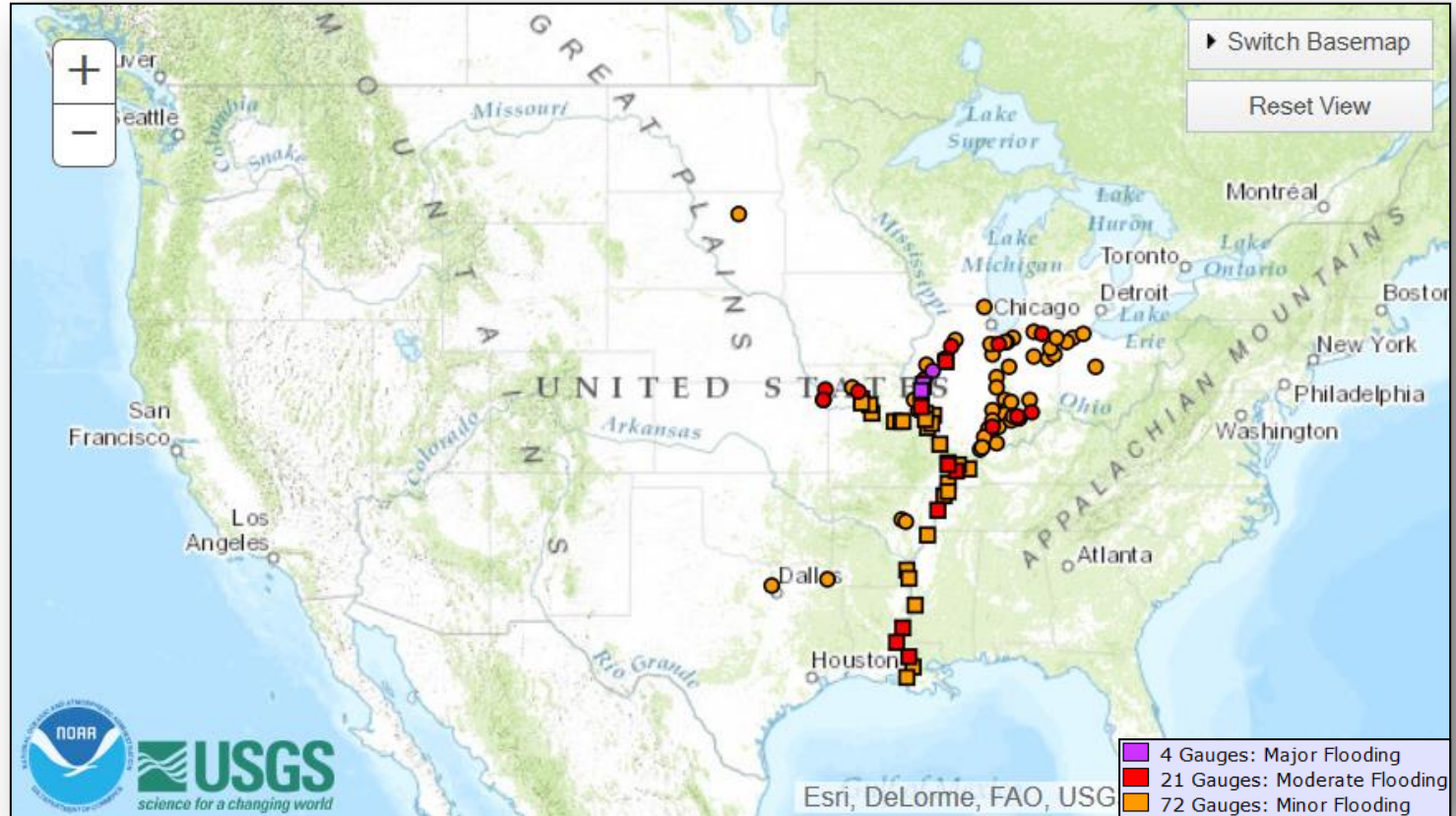


Day 3

# River Forecast



FEMA

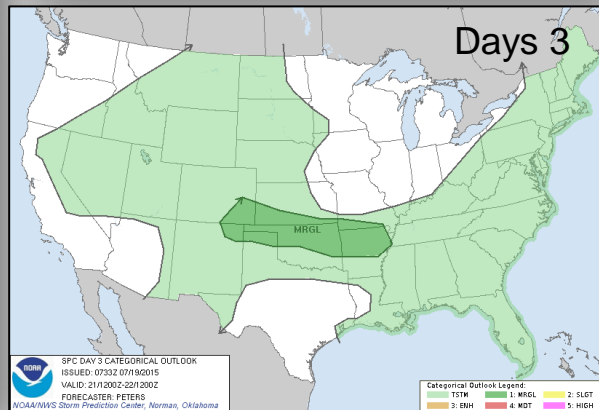
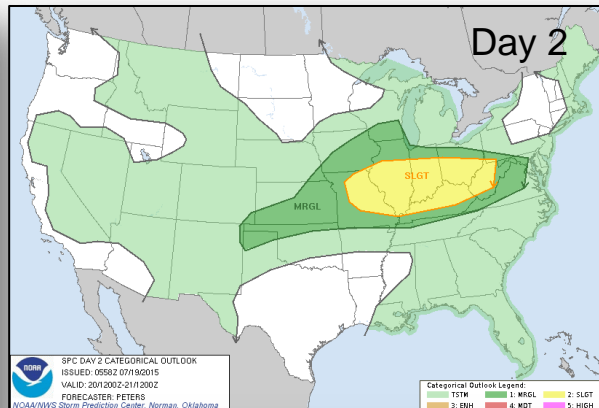
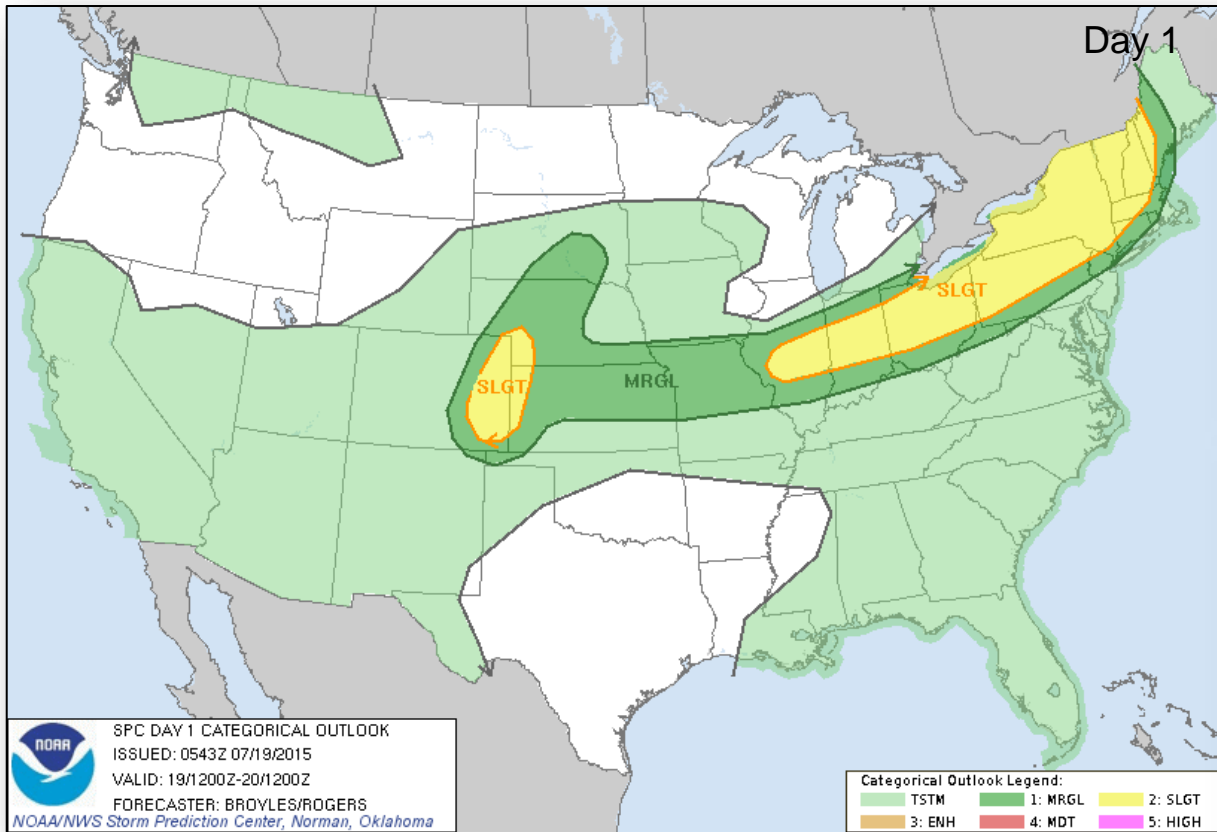




# Severe Weather Outlook, Days 1-3



FEMA

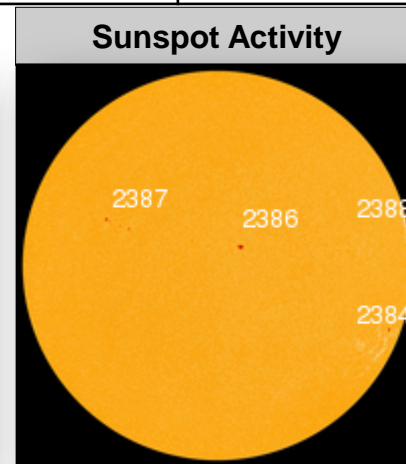
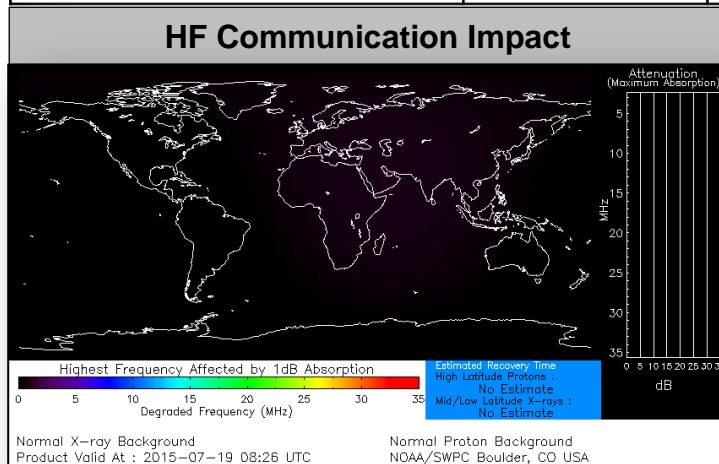


# Space Weather



FEMA

None	Past 24 Hours	Current	Next 24 Hours
Space Weather Activity:	None	None	None
• Geomagnetic Storms	None	None	None
• Solar Radiation Storms	None	None	None
• Radio Blackouts	None	None	None



# FEMA Readiness – Deployable Teams /Assets



Deployable Teams/Assets									
Resource	Status	Total	FMC Available		Partially Available	Not Available	Detailed, Deployed, Activated	Comments	Rating Criterion
FCO		35	10	29%	0	1	24		OFDC Readiness: FCO    Green    Yellow    Red Type 1    3+            2            1 Type 2    4+            3            2 Type 3    4                3            2 FDRC    3                2            1
FDRC		9	5	56%	0	0	8		
US&R		28	27	96%	0	1	0	NM-TF1 (Red) – Personnel shortages	<ul style="list-style-type: none"> <li>• Green = Available/FMC</li> <li>• Yellow = Available/PMC</li> <li>• Red = Out-of-Service</li> <li>• Blue = Assigned/Deployed</li> </ul>
National IMAT		3	3	100%	0	0	0		<ul style="list-style-type: none"> <li>• Green: 3 avail</li> <li>• Yellow: 1-2 avail</li> <li>• Red: 0 avail (<i>Individual N-IMAT red if 50% of Section Chiefs and/or Team Leader is unavailable for deployment.</i>)</li> </ul>
Regional IMAT		13	5	38%	0	4	4	<b>Deployed (Blue):</b> RII (Team A) supporting FEMA-4223-DR-TX RV to RVI supporting severe weather/flooding RVI (Team 1) to TX & personnel to OK RVIII (Team 1) supporting FEMA-4227-DR-WY  <b>Not Mission Capable (Red):</b> <u>Personnel shortages/staff adjustments</u> R1 (Team 1); RIV (Team 3); RVI (Team 2); RIX (Team 1)	<ul style="list-style-type: none"> <li>• Green: 7 or more avail</li> <li>• Yellow: 4 - 6 teams available</li> <li>• Red: &gt; 8 teams deployed/unavailable</li> </ul> <i>R-IMAT also red if TL Ops/Log Chief is unavailable &amp; has no qualified replacement</i>
MCOV		60	35	58%	0	7	18	14 units in TX 4 units in OK	<ul style="list-style-type: none"> <li>• Green = 80 – 100% avail</li> <li>• Yellow = 60 – 79% avail</li> <li>• Red = 59% or below avail</li> <li>• Readiness remains 95%</li> </ul>

# FEMA Readiness – National/Regional Teams



National/Regional Teams									
Resource	Status	Total	FMC Available		Partially Available	Not Available	Status	Comments	Rating Criterion
NWC		5	5	100%	0	0	Not Activated		• Green = FMC • Yellow = PMC • Red = NMC
NRCC		2	344	89%	0	44	Not Activated		
HLT		1	N/A	N/A	0	0	Activated		
DEST							Not Activated		
RRCCs		10	10	100%	0	0	Not Activated		
RWCs/MOCs		10	10	100%	0	0	Not Activated		



# FEMA

**FEMA's mission is to support our citizens and first responders to ensure that as a nation we work together to build, sustain, and improve our capability to prepare for, protect against, respond to, recover from, and mitigate all hazards.**