

The Disaster Center is dedicated to the idea that disaster mitigation is cost effective and individuals pursuing their own interest are the greatest potential force for disaster reduction.

Please consider making a small donation to the Disaster Center



When disaster mitigation is cost effective, we are on the road to bringing disasters to an end.



FEMA

Daily Operations Briefing

Monday, July 20, 2015

8:30 a.m. EDT

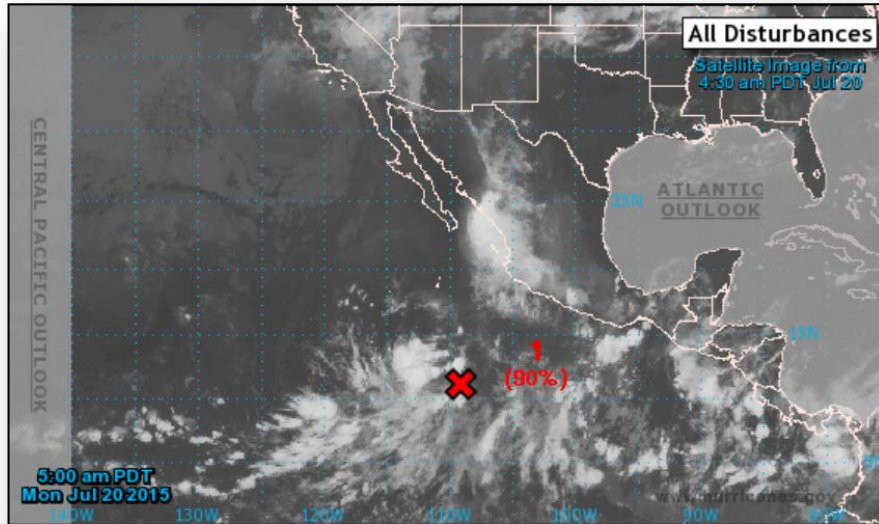
2-Day Tropical Outlook – Atlantic



FEMA



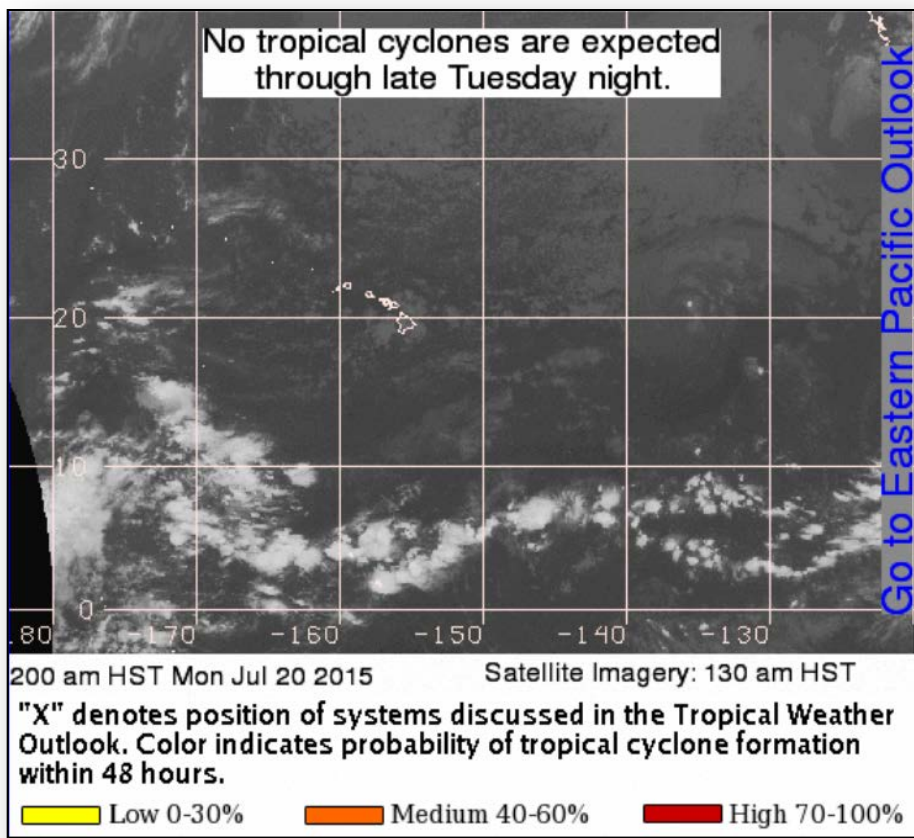
2-Day Tropical Outlook – Eastern Pacific



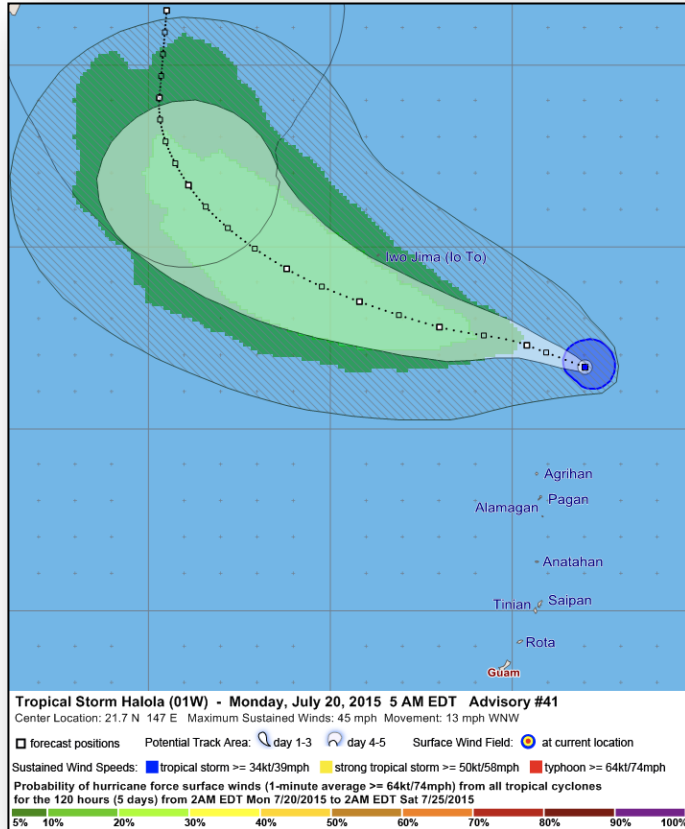
Disturbance #1: (as of 8:00 a.m. EDT)

- Showers and thunderstorms located about 600 miles SSW of Manzanillo, Mexico moving WNW at 10-15 mph
- Expected to become more conducive for development by Tuesday
- Tropical Storm likely to form within the next couple of days
- Formation chance next 48 hours: High (90%)
- Formation chance next 5 days: High (90%)

Central Pacific – Tropical Outlook



Western Pacific – TS Halola (Final)



Tropical Storm Halola : (Advisory #41 as of 6:00 a.m. EDT)

- Located 590 miles NNE of Guam; 460 N of Saipan
- Moving WNW at 13 mph; expected to continue next few days
- Max sustained winds 45 mph; continued intensification expected
- May become a Typhoon in the next couple days
- Expected to pass well north of Agrihan today

Wildfire Summary



Fire Name (County)	FMAG #	Acres burned	% Contained Est. Containment date	Evacuations (Residents)	Structures Threatened	Structures Destroyed	Fatalities / Injuries
California (1)							
North (FINAL) (San Bernardino County)	FEMA-5089-FM-CA Approved July 17	4,250	75% (+70)	Lifted	0 (-700)	7 homes	0/1

FMAG Requests and Declarations



Action (since last report)		Total	FMAG No. and State		
Requests DENIED		0			
Requests APPROVED		1	FEMA-5089-FM-CA		
Approved FMAG Data					
Year	Current YTD	MTD	Monthly Average	Cumulative Acres Burned YTD	Cumulative Denied FMAGs YTD
2015	8	6	7	18,040	2
Year	Total Previous FY	++ Yearly Average		Total Acres Burned Previous Year	Total Denied FMAGs Previous Year
2014	31	37		152,648	2
* Reflects the 3-year average for current month/ ** Reflects 3-year total average					

Disaster Requests & Declarations



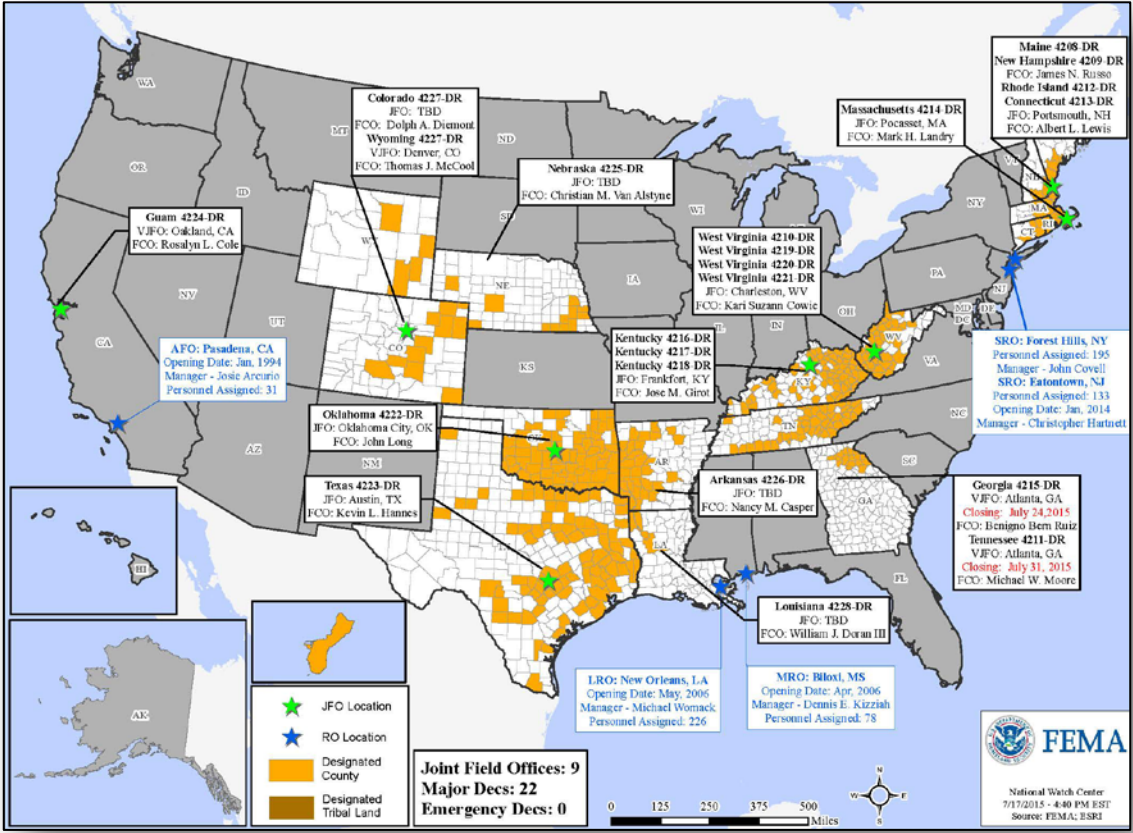
Declaration Requests in Process		Requests APPROVED (since last report)	Requests DENIED (since last report)
3	Date Requested	0	0
KS – DR Severe Storms, Tornadoes, and Flooding	July 1, 2015		
MD – DR Civil Unrest (Appeal)	July 7, 2015		
NJ – DR Severe Storms	July 13, 2015		

Disaster Amendments



Amendment	Effective Date	Action
Amendment No.8 FEMA-4223-DR-TX	July 17, 2015	Added 4 counties for Individual Assistance

Open Field Offices as of July 20

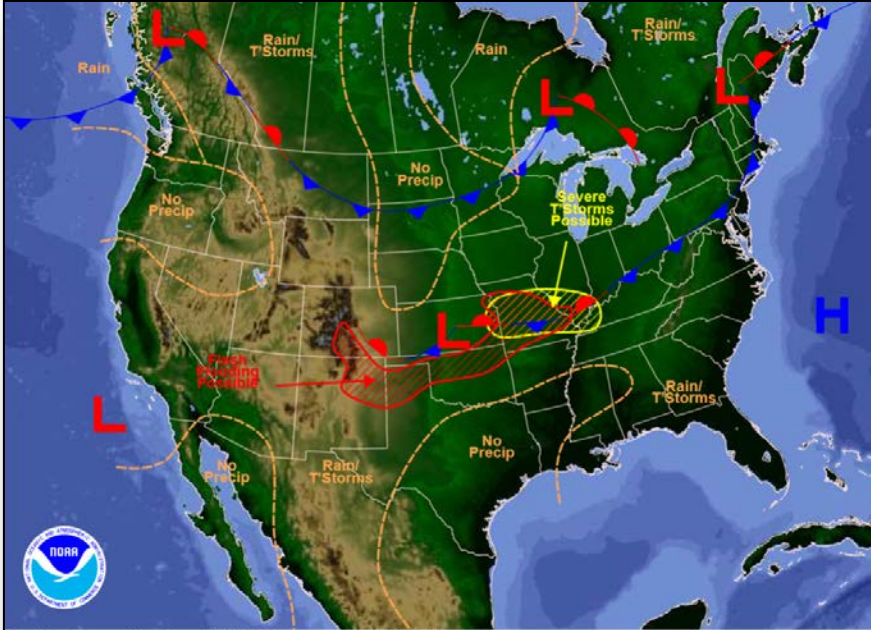


Joint Preliminary Damage Assessments



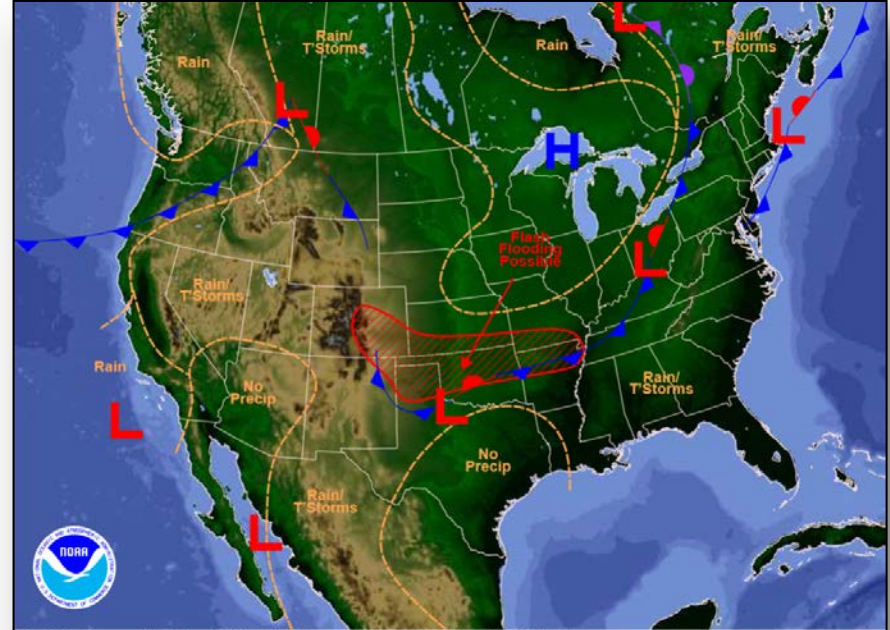
Region	State / Location	Event	IA/PA	Number of Counties		Start – End
				Requested	Complete	
III	WV	Severe Weather July 13-14, 2015	IA	3	0	7/17 – TBD
			PA	10	0	7/17 – TBD
IV	KY	Severe Storms & Flooding July 13-15, 2015	IA	2	2	7/18 – 7/18
VI	OK	Severe Storms, Tornadoes & Flooding May 5 - June 4, 2015	IA	55	49	5/26 – TBD
			PA	63	63	6/26 – 7/7
	TX	Severe Storms, Tornadoes & Flooding May 4 - June 19, 2015	IA	49	48	5/29 – TBD
			PA	117	86	5/29 – TBD
TX	Tropical Storm Bill June 15-20, 2015	PA	5	4	7/15 – TBD	
VII	MO	Severe Weather, Tornadoes, High Winds, Heavy Rains, Flooding & Flash Flooding May 15 and continuing	IA	15	13 (+4)	7/14 – TBD
			PA	69	62 (+29)	6/29 – TBD
	IA	Severe Storms June 22, 2015 and continuing	PA	17	17 (+17)	7/14 – 7/18
VIII	SD	Severe Storms and Flooding May 24 – June 6	PA	14 counties 3 tribes	14 (+1) counties 3 (+1) tribes	7/13 – 7/17
		Severe Storms and Flooding May 9 – June 6, 2015	IA	1	0	7/20 – 7/24
			PA	1	0	7/20 – 7/24

National Weather Forecast



Weather Forecast for Mon, Jul 20, 2015, issued 4:36 AM EDT
DOC/NOAA/NWS/NCEP/Weather Prediction Center
Prepared by McCreynolds based on WPC, SPC and NHC forecasts

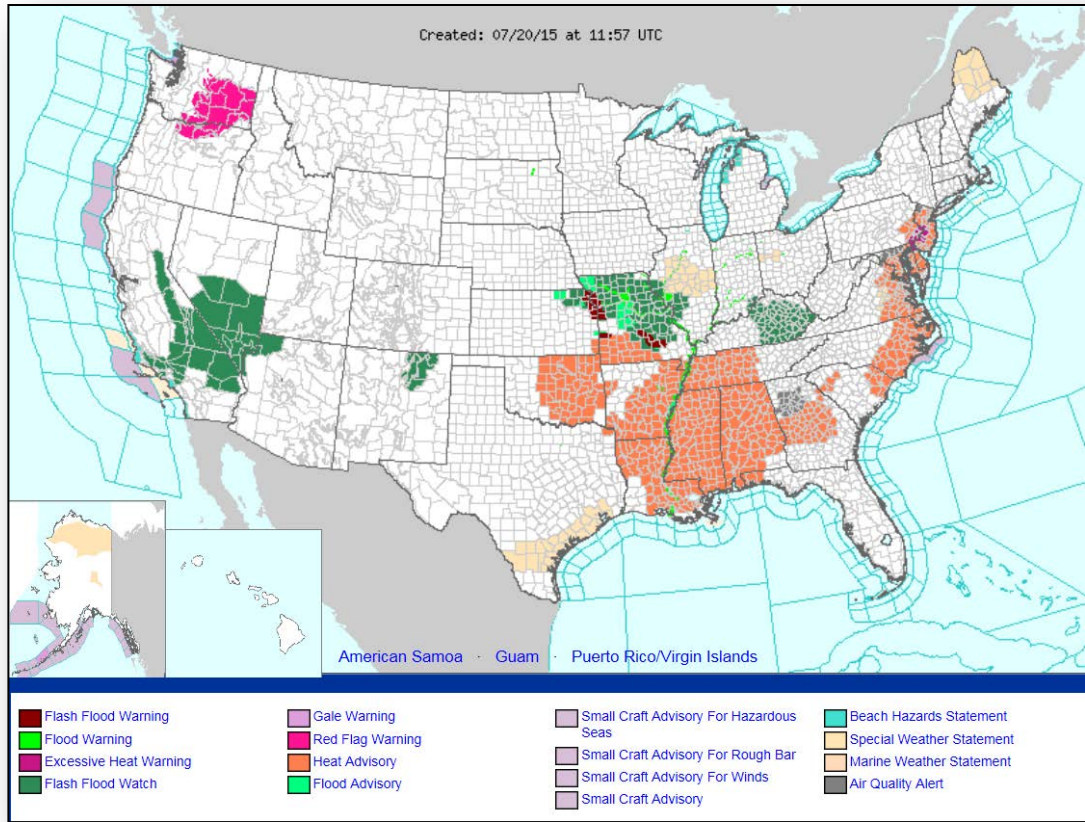
Today



Weather Forecast for Tue, Jul 21, 2015, issued 4:40 AM EDT Mon, Jul 20, 2015
DOC/NOAA/NWS/NCEP/Weather Prediction Center
Prepared by McCreynolds based on WPC, SPC and NHC forecasts

Tomorrow

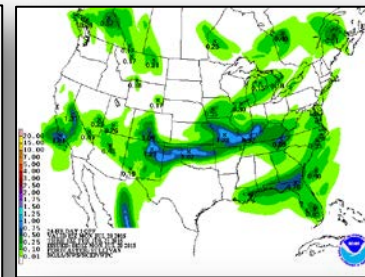
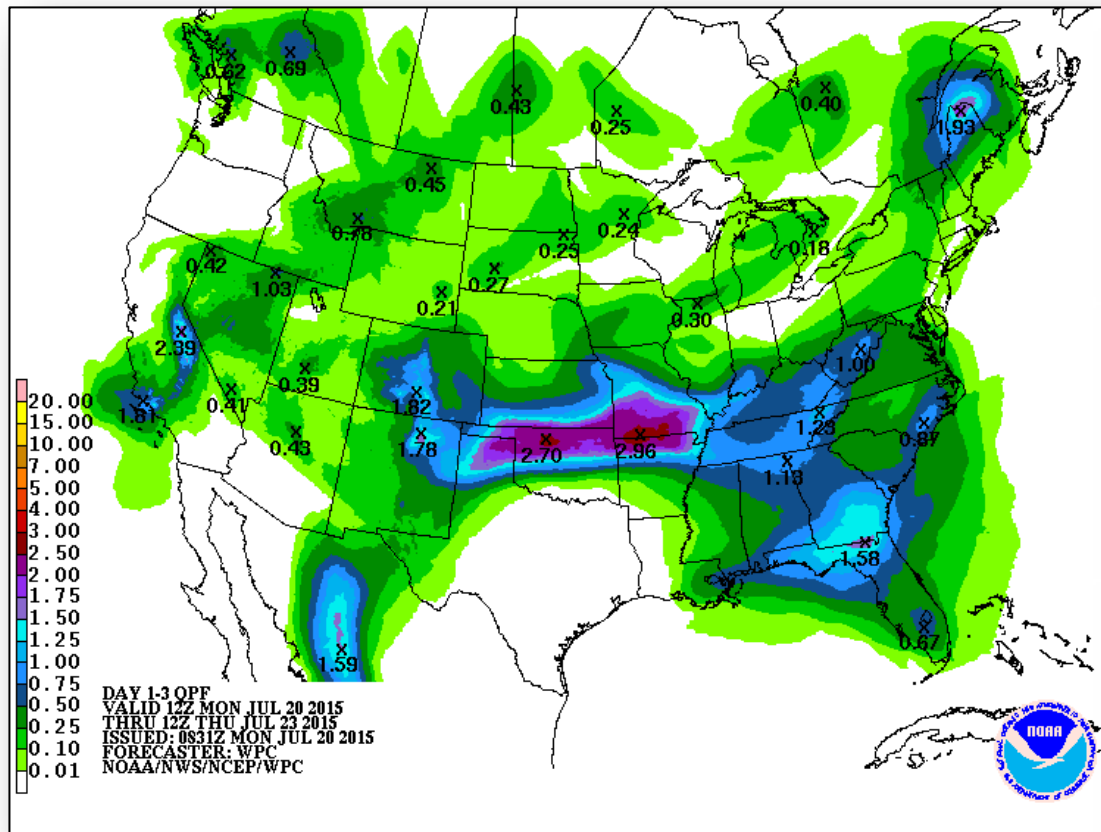
Active Watches/Warnings



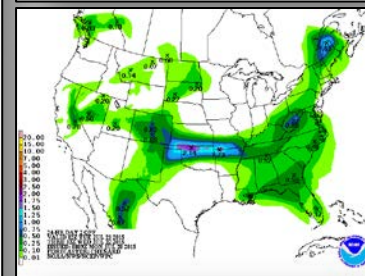
Precipitation Forecast, 1-3 Day



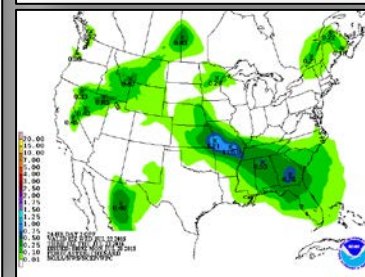
FEMA



Day 1



Day 2

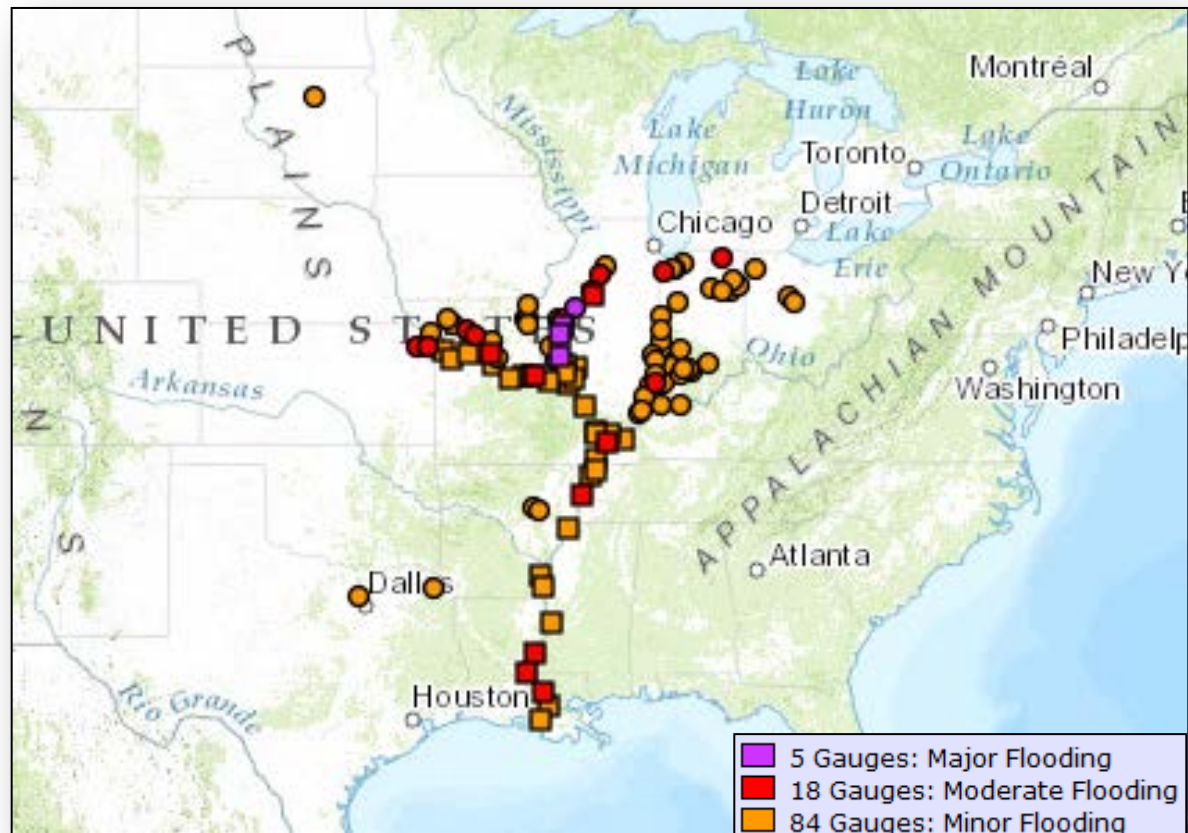


Day 3

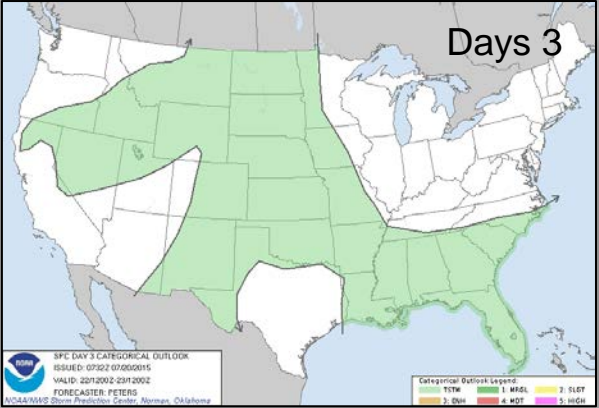
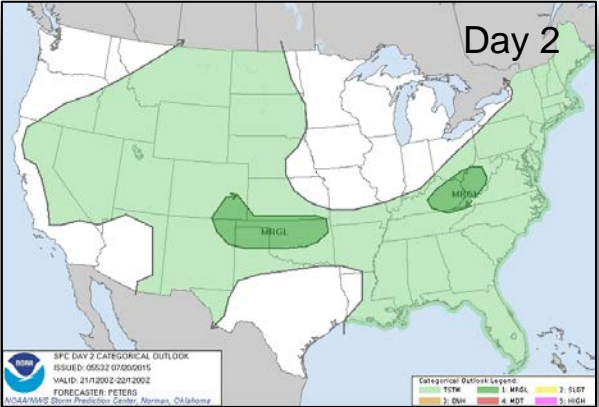
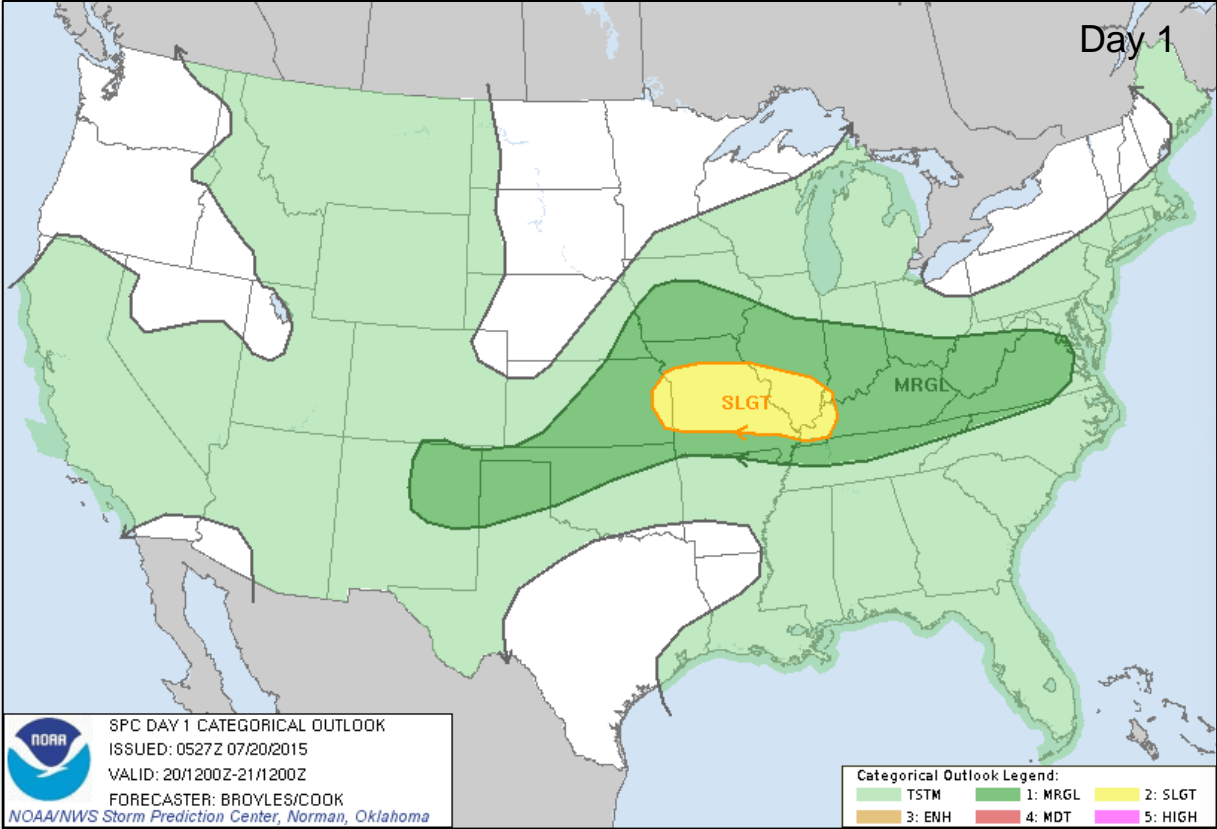
River Forecast



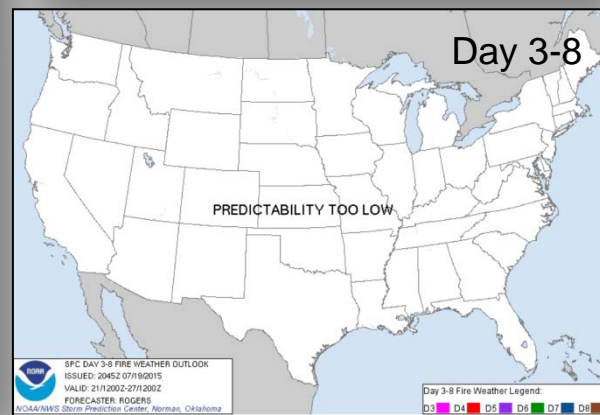
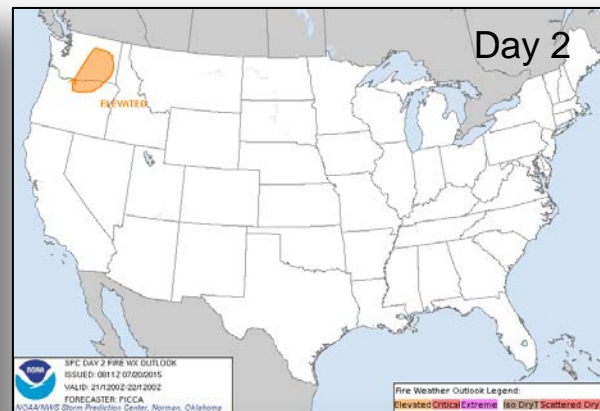
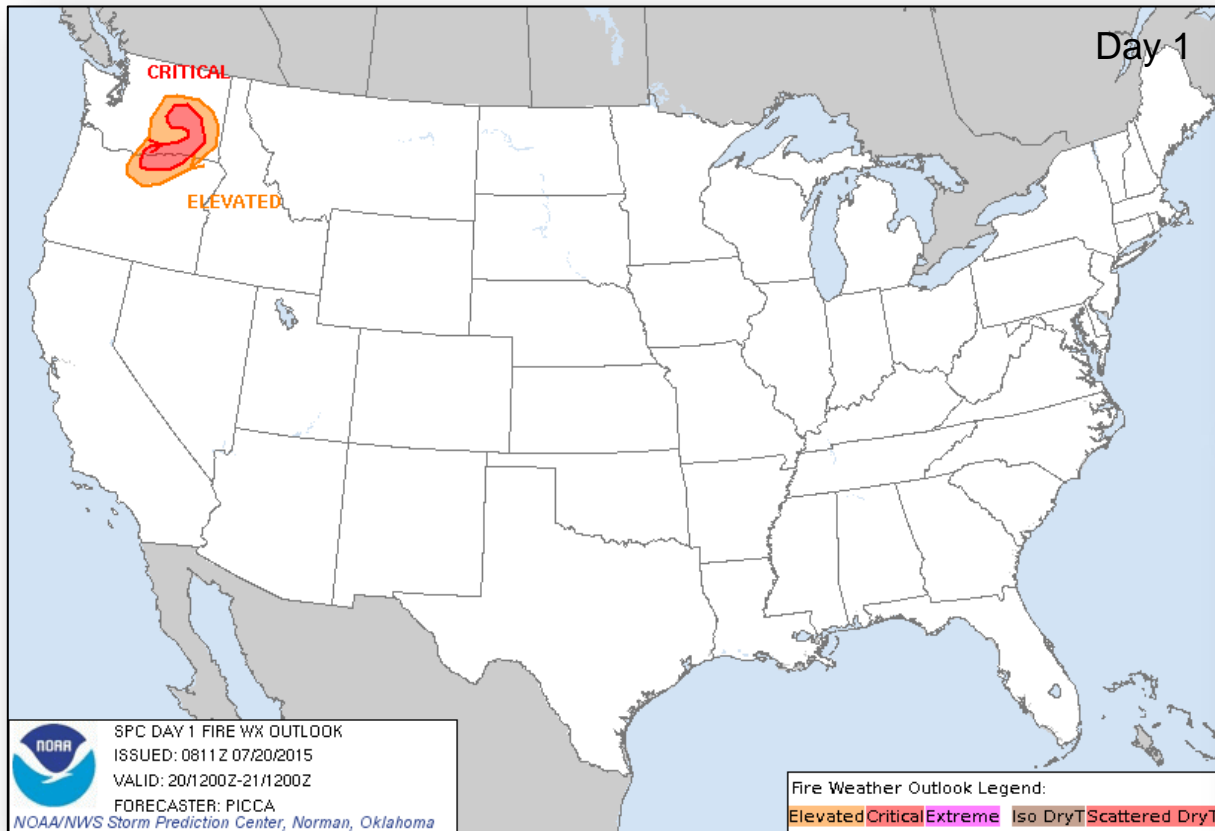
FEMA



Severe Weather Outlook, Days 1-3

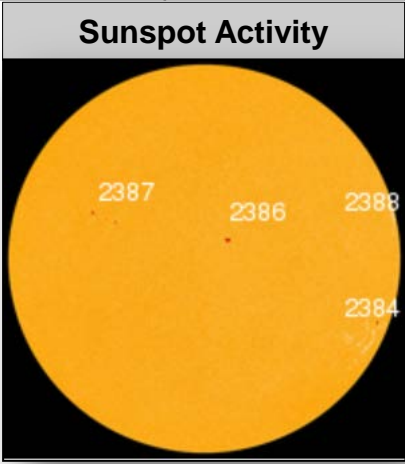
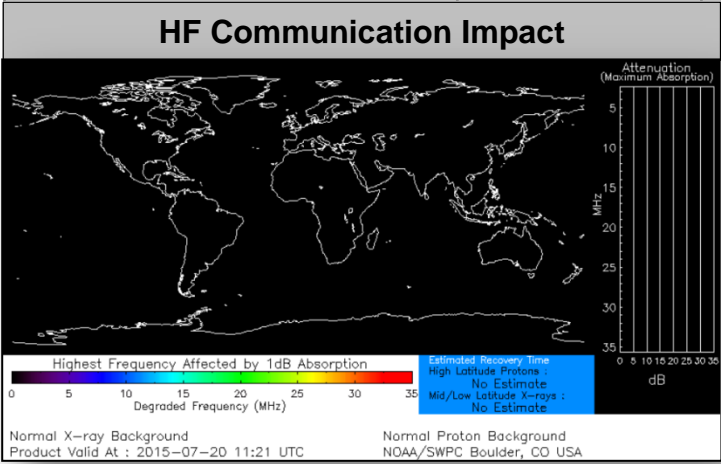


Fire Weather Outlook, Days 1-8



Space Weather

None	Past 24 Hours	Current	Next 24 Hours
Space Weather Activity:	None	None	None
• Geomagnetic Storms	None	None	None
• Solar Radiation Storms	None	None	None
• Radio Blackouts	None	None	None



FEMA Readiness – Deployable Teams /Assets



Deployable Teams/Assets									
Resource	Status	Total	FMC Available		Partially Available	Not Available	Detailed, Deployed, Activated	Comments	Rating Criterion
FCO	Green	35	9	26%	0	1	25		OFDC Readiness: FCO Green Yellow Red Type 1 3+ 2 1 Type 2 4+ 3 2 Type 3 4 3 2 FDRC 3 2 1 • Green = Available/FMC • Yellow = Available/PMC • Red = Out-of-Service • Blue = Assigned/Deployed
FDRC		9	5	56%	0	0	8		
US&R		28	27	96%	0	1	0	NM-TF1 (Red) – Personnel shortages	
National IMAT	Green	3	3	100%	0	0	0		• Green: 3 avail • Yellow: 1-2 avail • Red: 0 avail (<i>Individual N-IMAT red if 50% of Section Chiefs and/or Team Leader is unavailable for deployment.</i>)
Regional IMAT	Yellow	13	5	38%	0	4	4	Deployed (Blue): RII (Team A) supporting FEMA-4223-DR-TX RV to RVI supporting severe weather/flooding RVI (Team 1) to TX & personnel to OK RVIII (Team 1) supporting FEMA-4227-DR-WY Not Mission Capable (Red): Personnel shortages/staff adjustments R1 (Team 1); RIV (Team 3); RVI (Team 2); RIX (Team 1)	• Green: 7 or more avail • Yellow: 4 - 6 teams available • Red: > 8 teams deployed/unavailable <i>R-IMAT also red if TL Ops/Log Chief is unavailable & has no qualified replacement</i>
MCOV	Red	60	35	58%	0	7	18	14 units in TX 4 units in OK	• Green = 80 – 100% avail • Yellow = 60 – 79% avail • Red = 59% or below avail • Readiness remains 95%

FEMA Readiness – National/Regional Teams



National/Regional Teams									
Resource	Status	Total	FMC Available		Partially Available	Not Available	Status	Comments	Rating Criterion
NWC		5	5	100%	0	0	Not Activated		<ul style="list-style-type: none"> • Green = FMC • Yellow = PMC • Red = NMC
NRCC		2	344	89%	0	44	Not Activated		
HLT		1	N/A	N/A	0	0	Activated		
DEST							Not Activated		
RRCCs		10	10	100%	0	0	Not Activated		
RWCs/MOCs		10	10	100%	0	0	Not Activated		



FEMA

FEMA's mission is to support our citizens and first responders to ensure that as a nation we work together to build, sustain, and improve our capability to prepare for, protect against, respond to, recover from, and mitigate all hazards.