

The Disaster Center is dedicated to the idea that disaster mitigation is cost effective and individuals pursuing their own interest are the greatest potential force for disaster reduction.

Please consider making a small donation to the Disaster Center



When disaster mitigation is cost effective, we are on the road to bringing disasters to an end.



FEMA

Daily Operations Briefing

Thursday, July 23, 2015

8:30 a.m. EDT

Significant Activity: July 22-23



Significant Events: Wragg Fire

Tropical Activity:

- Atlantic: Tropical cyclone activity is not expected during the next 48 hours
- Eastern Pacific: Tropical Depression Seven-E
- Central Pacific: Disturbance #1 – Low (10%)
- Western Pacific: No activity threatening U.S. territories

Significant Weather:

- Severe thunderstorms – Northern Plains/Upper Mississippi Valley
- Flash flooding – Northern Plains/Upper Mississippi Valley; parts of Mid-Atlantic/Southeast
- Heat advisory – Lower Mississippi Valley to the Southeast
- Elevated Fire Weather Areas: Wyoming & Colorado; Red Flag Warnings: Montana

Space Weather:

- Past 24 hours: Minor – G1 Geomagnetic Storms occurred; next 24 hours: Minor - G1 Geomagnetic Storms predicted

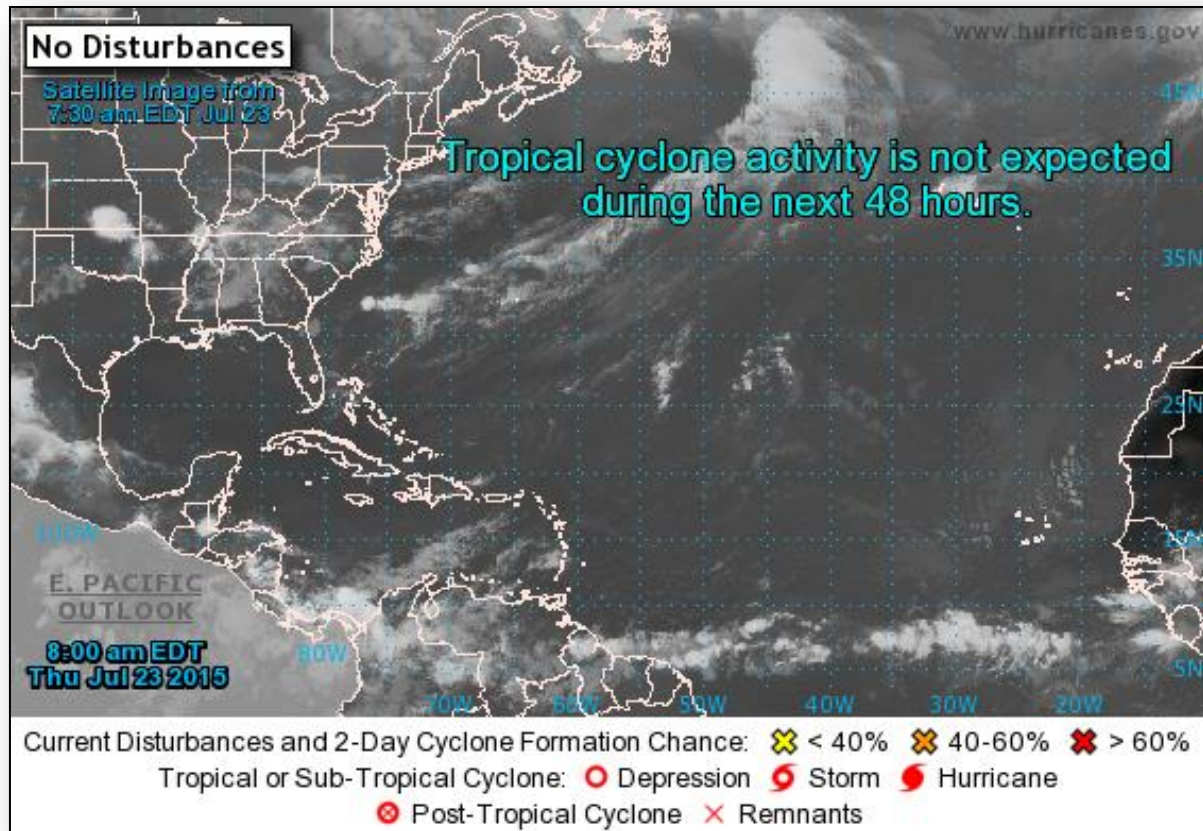
Declaration Activity:

- Major Disaster Declaration FEMA-4231-DR-NJ
- Fire Management Assistance Grant FEMA-5091-FM-CA

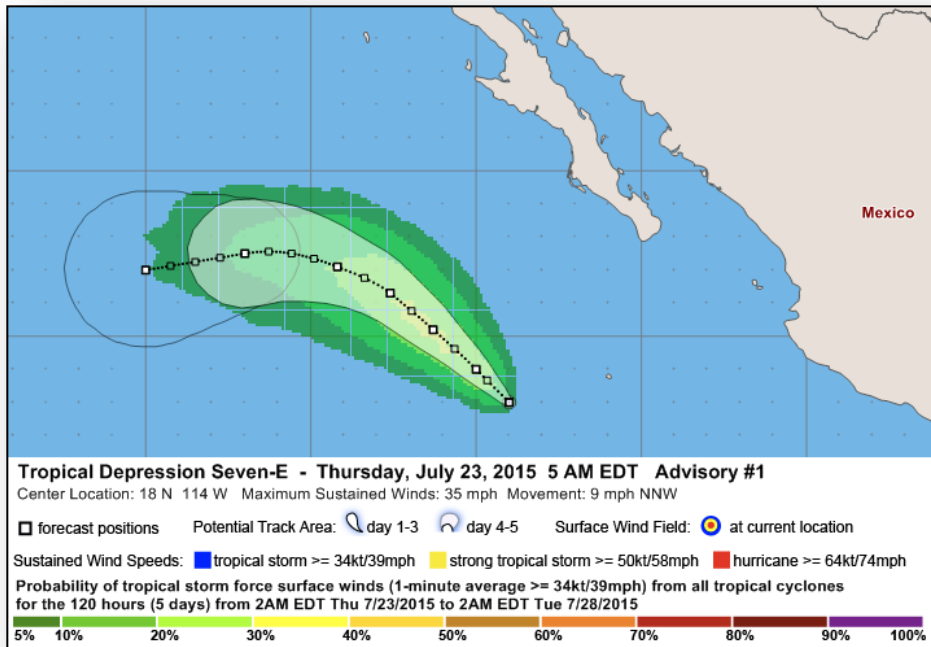
2-Day Tropical Outlook – Atlantic



FEMA



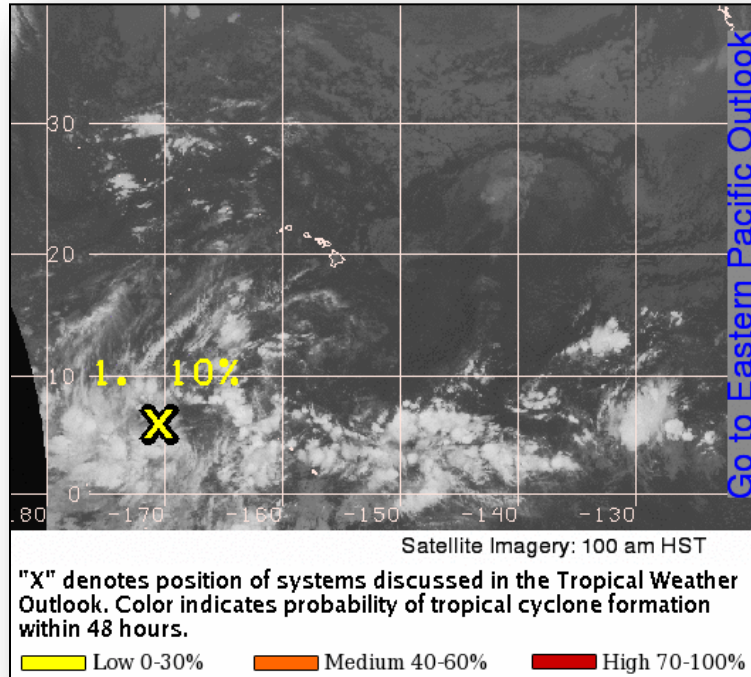
2-Day Tropical Outlook – Eastern Pacific



Tropical Depression Seven-E: (as of 5:00 a.m. EDT)

- Located 430 miles SW of the southern tip of Baja California, Mexico
- Moving NNW at 9 mph
- Maximum sustained winds: 35 mph
- Turn toward the NW is forecast today; followed by a WNW turn Friday
- Expected to weaken to a remnant low Friday night
- No coastal watches or warnings

Central Pacific – Tropical Outlook



Disturbance 1: (as of 8:00 a.m. EDT)

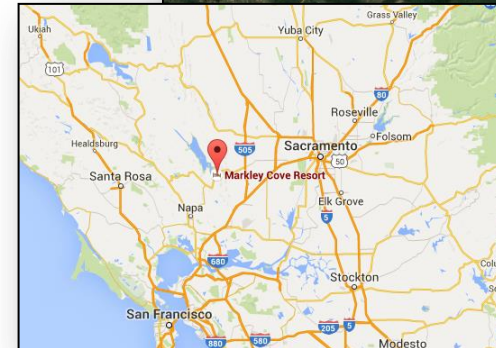
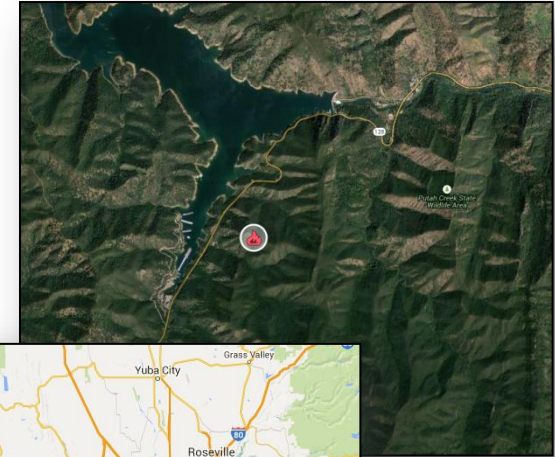
- A broad area of disorganized showers & isolated thunderstorms
- Associated with a weak surface low embedded within a monsoon trough
- Located 1,300 miles south-southwest of Honolulu, HI
- Environmental conditions do not appear to be conducive for significant development of this nearly stationary system during the next couple of days
- Probability of tropical cyclone formation - 10%

Wragg Fire, CA



Fire Name (County)	Location	Acres burned	% Contained	Est. Full Containment	FMAG	Structures Lost / Threatened	Fatalities / Injuries
Wragg Fire (Napa,Yolo,Solano)	Lake Berryessa, CA	4,000	5%	Unknown	FEMA-5091-FM-CA Approved July 23, 2015	0 / 150	0 / 0

- Fire began July 23, 2015 near the City of Lake Berryessa (*pop 1,732*)
- A total of 500 residents were evacuated in Solano County
 - Mandatory evacuations are also in effect for portions of Yolo County
- 1 shelter is open with 2 occupants (*ESF-6 as of 5:00 a.m. EDT*)
- Road closures in effect from Wragg Canyon to Monticello Dam
- Solano, Yolo and the City of Winters are partially activated
- Cal OES Coastal Regional Emergency Operations Center (REOC) is partially activated



Wildfire Summary



Fire Name (County)	FMAG #	Acres burned	% Contained Est. Containment date	Evacuations (Residents)	Structures Threatened	Structures Destroyed	Fatalities / Injuries
California							
Wragg Fire (Napa, Yolo, Solano counties)	FEMA-5091-FM-CA Approved July 23, 2015	4,000	5%	500	150	0	0/0
Washington							
Blue Creek Fire (Walla Walla County)	FEMA-5090-FM-WA Approved July 21, 2015	5,580 (+1,780)	5%	150	100 Homes	1 Home/ 7 Other	0/3

Disaster Requests & Declarations



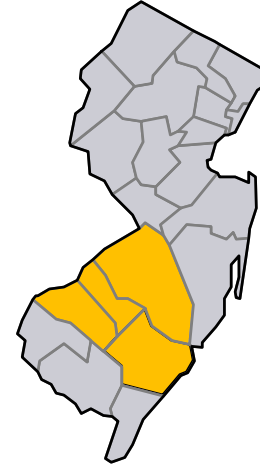
Declaration Requests in Process		Requests APPROVED (since last report)	Requests DENIED (since last report)
3	Date Requested	1	0
MD – DR Civil Unrest (Appeal)	July 7, 2015		
NJ – DR Severe Storms	July 13, 2015	Declared July 22, 2015	
VT – DR Severe Storms and Flooding	July 16, 2015		
MO – DR Severe Thunderstorms and Flooding	July 21, 2015		

Major Disaster Declaration Approved – NJ



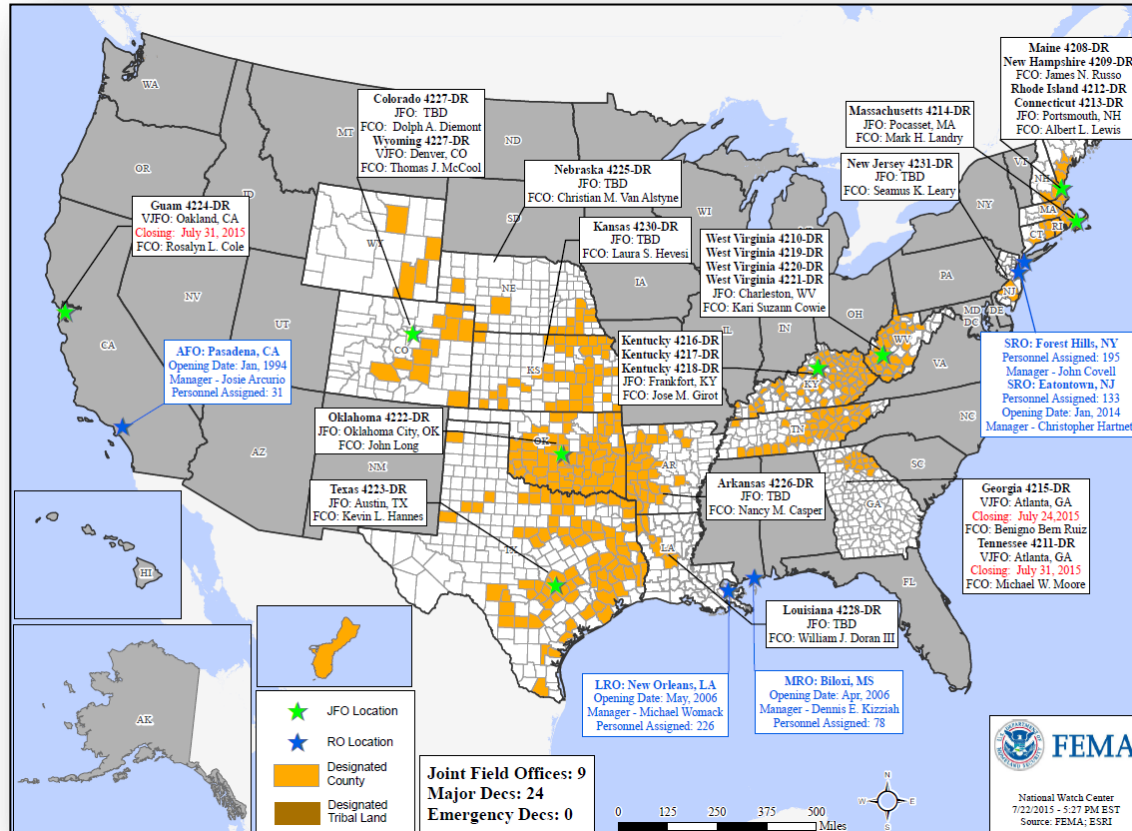
FEMA-4231-DR-NJ

- Major Disaster Declaration approved July 22, 2015
- Due to severe storms that occurred on June 23, 2015
- Provides:
 - Public Assistance for 4 counties
 - Hazard Mitigation statewide
- FCO is Seamus K. Leary



■ Declared PA counties

Open Field Offices as of July 23

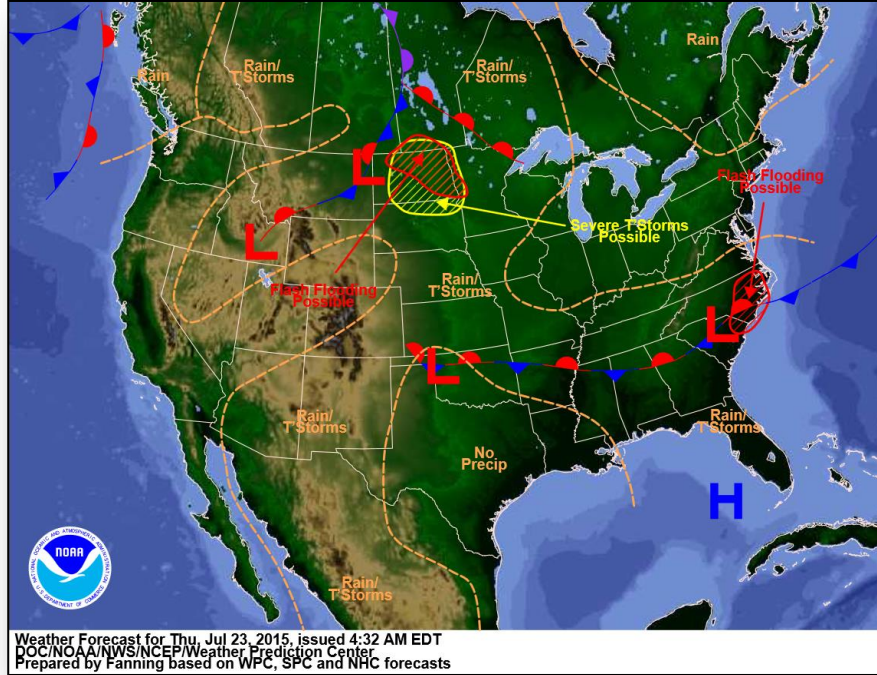


Joint Preliminary Damage Assessments

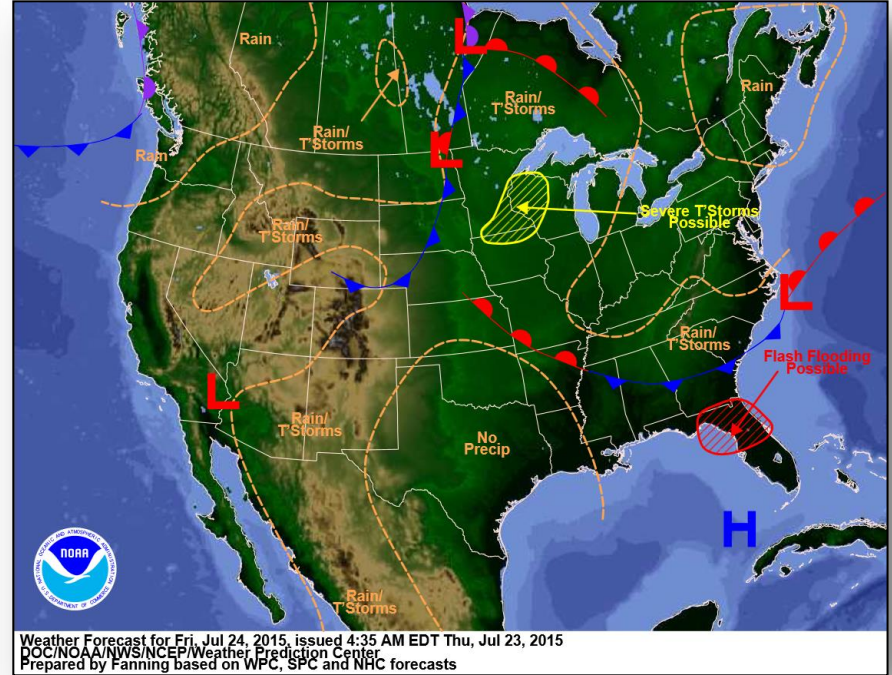


Region	State / Location	Event	IA/PA	Number of Counties		Start – End
				Requested	Complete	
III	WV	Severe Weather July 13-14, 2015	IA	3	3	7/17 – 7/20
			PA	10	0	7/17 – TBD
IV	KY	Severe Storms & Flooding July 13-15, 2015	IA	1	0	7/23 - TBD
			PA	12	0	7/27 - TBD
VI	OK	Severe Storms, Tornadoes & Flooding May 5 - June 4, 2015	IA	57 (+2)	54 (+2)	5/26 – TBD
			PA	63	63	6/26 – 7/7
	TX	Severe Storms, Tornadoes & Flooding May 4 - June 19, 2015	IA	49	49	5/29 – 7/20
			PA	112 (-5)	85 (-4)	5/29 – TBD
	TX	Tropical Storm Bill June 15-20, 2015	PA	5	5 (+1)	7/15 – 7/21
VII	MO	Severe Weather, Tornadoes, High Winds, Heavy Rains, Flooding & Flash Flooding May 15 and continuing	IA	15	15	7/14 – 7/20
			PA	69	62	6/29 – TBD
VIII	SD	Severe Storms and Flooding May 9 – June 6, 2015	IA	1	0	7/20 – TBD
			PA	1	0	7/20 – TBD

National Weather Forecast



Today

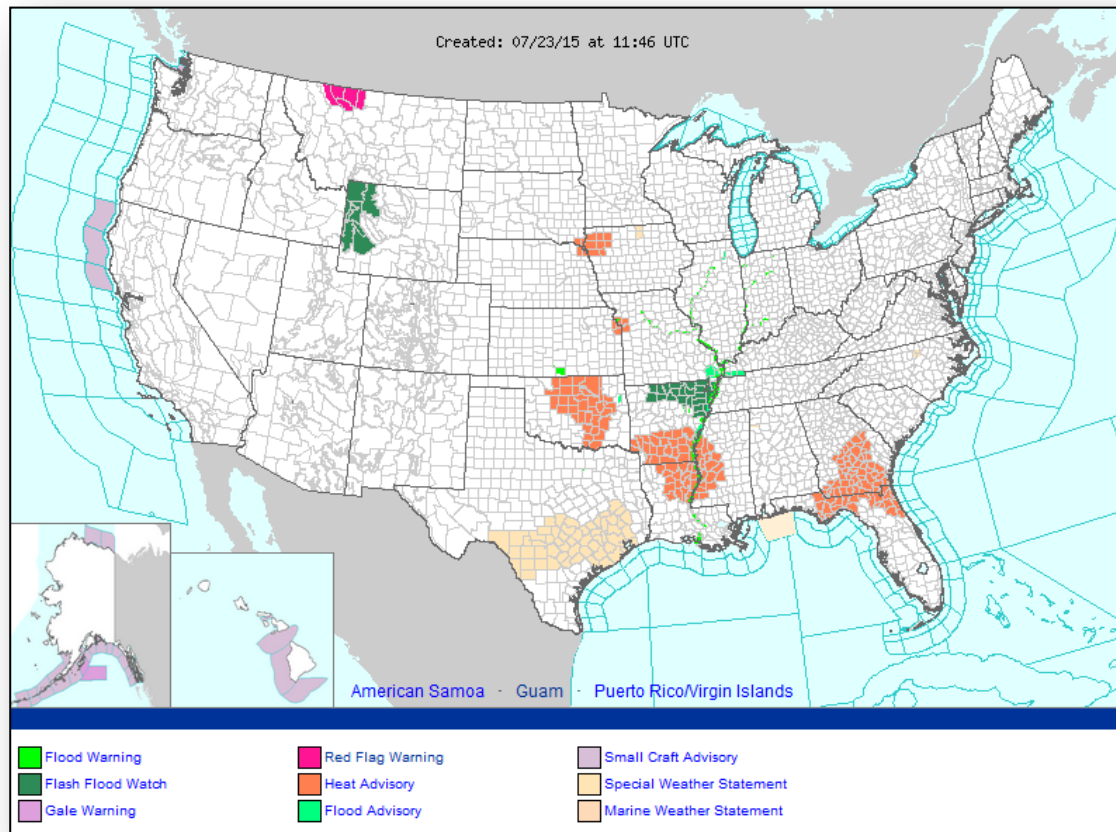


Tomorrow

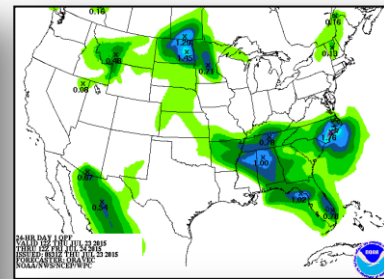
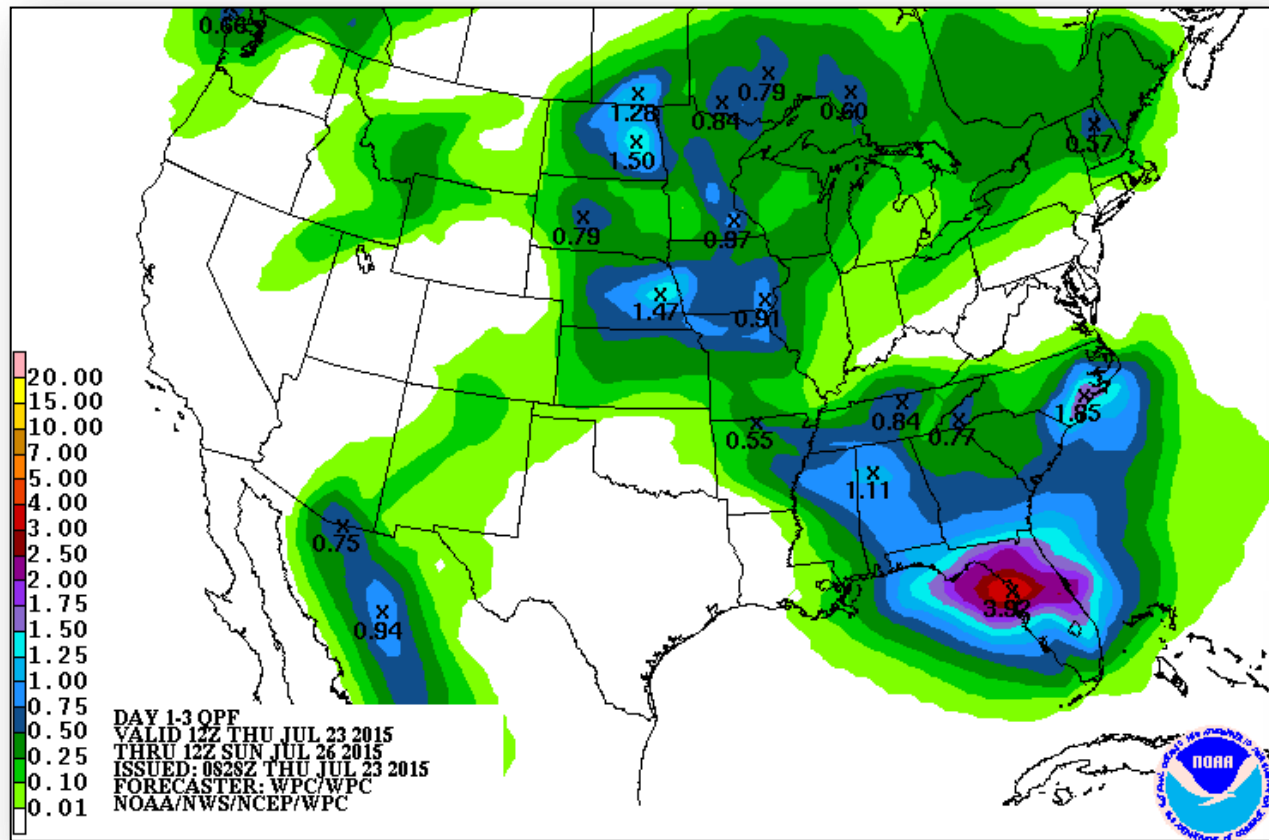
Active Watches/Warnings



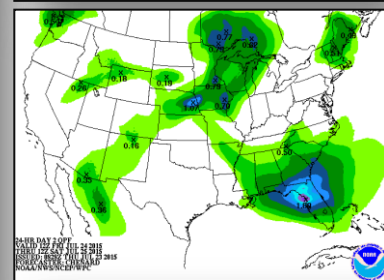
FEMA



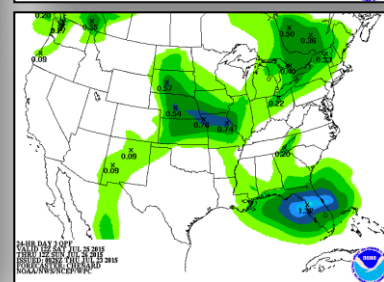
Precipitation Forecast, 1-3 Day



Day 1



Day 2



Day 3

River Forecast



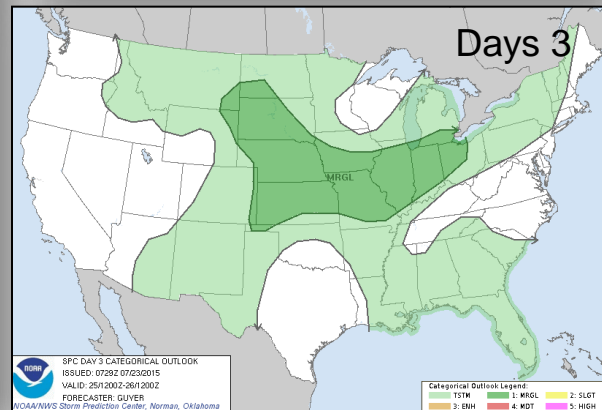
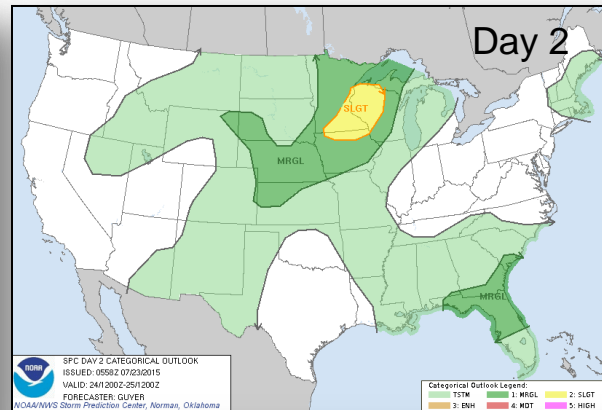
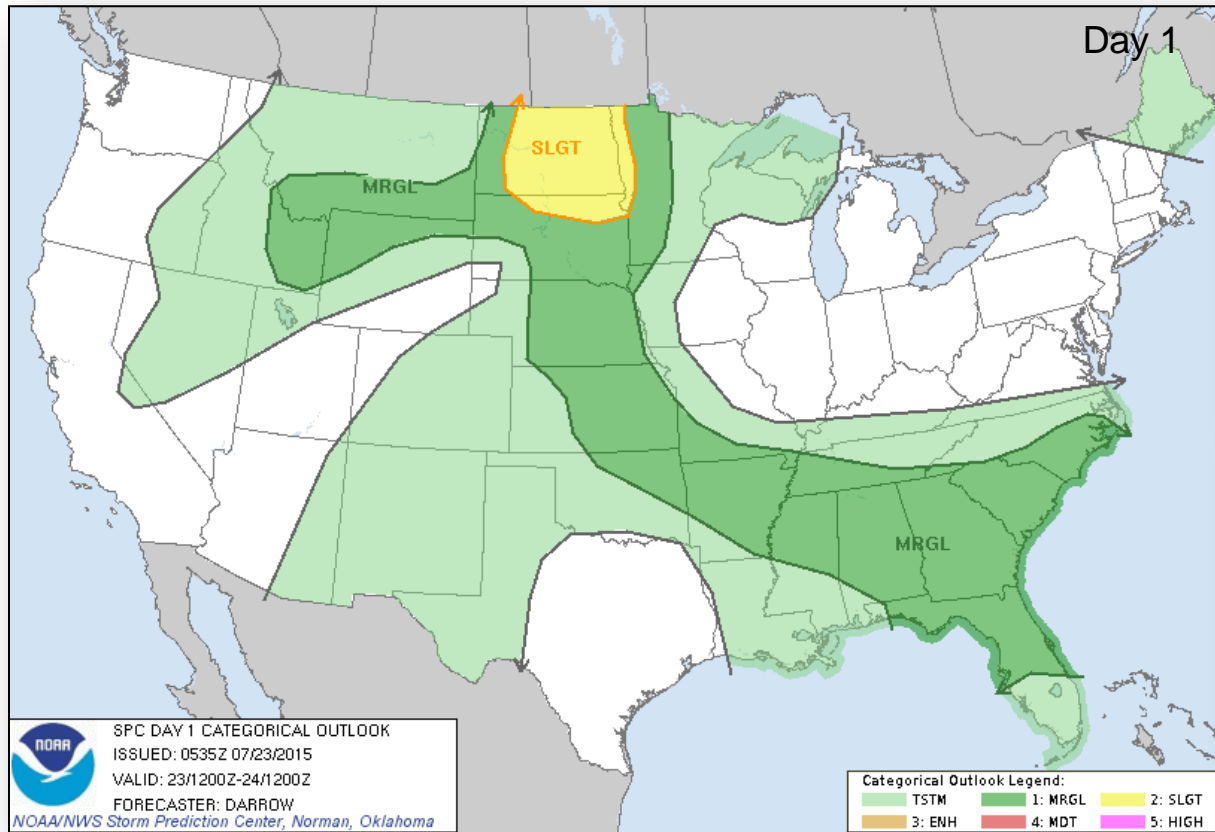
FEMA



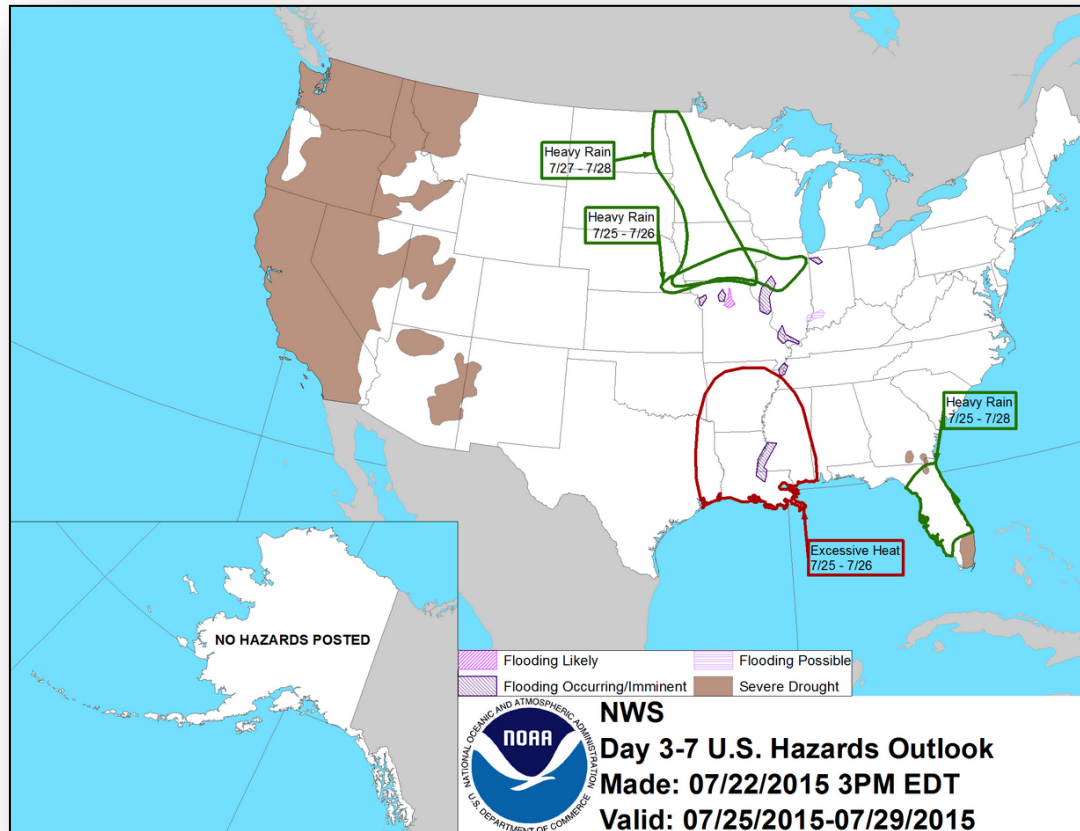
Severe Weather Outlook, Days 1-3



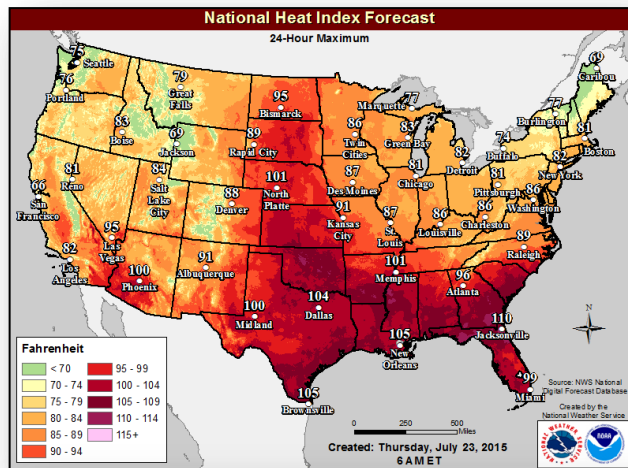
FEMA



Hazard Outlook, July 25-29



Dangers of Excessive Heat



Outlook:

Above normal temperatures and humid conditions will continue to create elevated to dangerous heat index values through the weekend, particularly across the south central and southeast U.S.

Health Dangers of Heat:

Heat is one of the leading weather-related killers in the U.S., resulting in hundreds of fatalities and heat-related illnesses each year, including:

- Hyperthermia, heat cramps, heat exhaustion and heat stroke

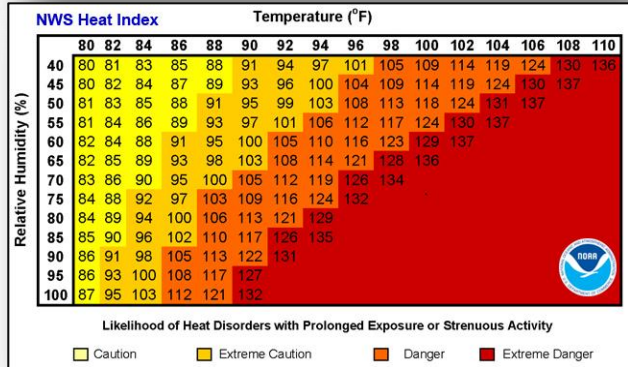
Preparedness Activities:

- Stay indoors as much as possible and limit exposure to the sun
- Remain hydrated; drink water often; avoid strenuous outdoor work
- Dress in loose-fitting, lightweight and light-colored clothing covering as much skin as possible
- Never leave children or pets alone in closed vehicles
- Know the symptoms of heat exhaustion; monitor elderly and children

Additional Resources:

<http://www.ready.gov/heat>

<http://www.nws.noaa.gov/om/heat/index.shtml>

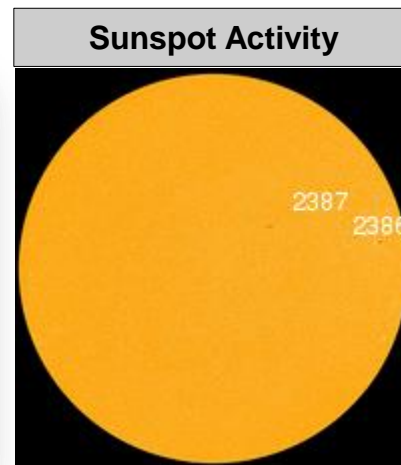
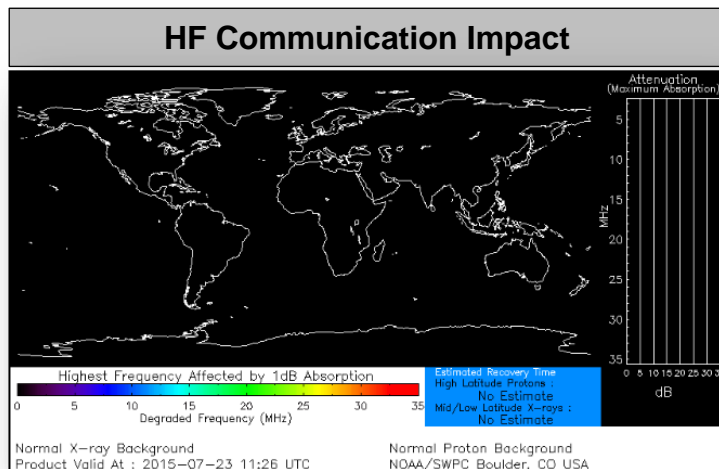


Space Weather



FEMA

	Past 24 Hours	Current	Next 24 Hours
Space Weather Activity:	Minor	None	Minor
• Geomagnetic Storms	G1	None	G1
• Solar Radiation Storms	None	None	None
• Radio Blackouts	None	None	None



FEMA Readiness – Deployable Teams /Assets



Deployable Teams/Assets									
Resource	Status	Total	FMC Available		Partially Available	Not Available	Detailed, Deployed, Activated	Comments	Rating Criterion
FCO		35	8	23%	0	1	26	PMC due to FCO deployment to KS	OFDC Readiness: FCO Green Yellow Red Type 1 3+ 2 1 Type 2 4+ 3 2 Type 3 4 3 2 FDRC 3 2 1
FDRC		9	5	56%	0	0	8		
US&R		28	27	96%	0	1	0	NM-TF1 (Red) – Personnel shortages	<ul style="list-style-type: none"> • Green = Available/FMC • Yellow = Available/PMC • Red = Out-of-Service • Blue = Assigned/Deployed
National IMAT		3	3	100%	0	0	0		<ul style="list-style-type: none"> • Green: 3 avail • Yellow: 1-2 avail • Red: 0 avail (<i>Individual N-IMAT red if 50% of Section Chiefs and/or Team Leader is unavailable for deployment.</i>)
Regional IMAT		13	5	38%	0	4	4	Deployed (Blue): RII (Team A) supporting FEMA-4223-DR-TX RV to RVI supporting severe weather/flooding RVI (Team 1) to TX & personnel to OK RVIII (Team 1) supporting FEMA-4227-DR-WY Not Mission Capable (Red): <u>Personnel shortages/staff adjustments</u> R1 (Team 1); RIV (Team 3); RVI (Team 2); RIX (Team 1)	<ul style="list-style-type: none"> • Green: 7 or more avail • Yellow: 4 - 6 teams available • Red: > 8 teams deployed/unavailable <i>R-IMAT also red if TL Ops/Log Chief is unavailable & has no qualified replacement</i>
MCOV		60	40	67%	0	6	14	12 units in TX 2 units in OK	<ul style="list-style-type: none"> • Green = 80 – 100% avail • Yellow = 60 – 79% avail • Red = 59% or below avail • Readiness remains 95%

FEMA Readiness – National/Regional Teams



National/Regional Teams									
Resource	Status	Total	FMC Available		Partially Available	Not Available	Status	Comments	Rating Criterion
NWC		5	5	100%	0	0	Not Activated		• Green = FMC • Yellow = PMC • Red = NMC
NRCC		2	344	89%	0	44	Not Activated		
HLT		1	N/A	N/A	0	0	Activated		
DEST							Not Activated		
RRCCs		10	10	100%	0	0	Not Activated		
RWCs/MOCs		10	10	100%	0	0	Not Activated		

Common Operating Picture

FEMA-4085-DR-NY

Disaster Declared: 10-29-2012

Sandy Recovery Office Opened: Jan 15, 2014

Slide 1

Overview

NY Sandy Recovery Office

- **Established January, 2014**
 - Continued Stafford Act program implementation (Public Assistance, Mitigation)
 - Integrated SRIA legislation/Sandy Taskforce recommendations
 - Section 428 Public Assistance Alternative Procedures
 - Regional Resilience Coordination
- **Current Priorities**
 - SRO to Region 2 transition
 - Strategic Management Plan development
 - Recovery Interagency Resilience Coordination
 - Lessons Learned Report
 - Aggressive management of administrative costs

Common Operating Picture

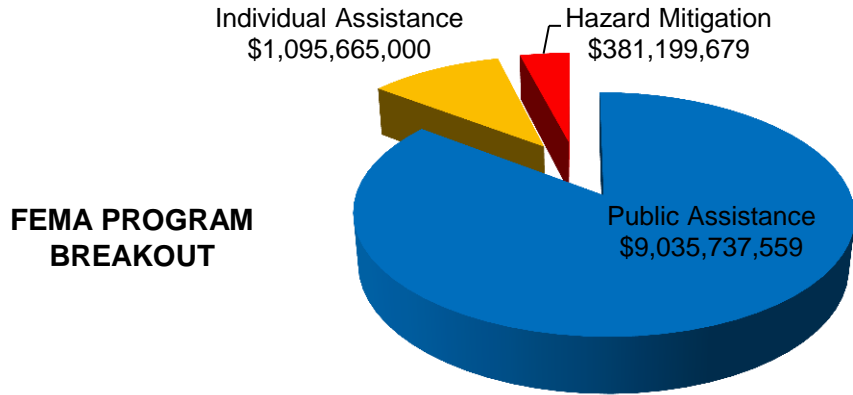
FEMA-4085-DR-NY

Disaster Declared: 10-29-2012

Sandy Recovery Office Opened: Jan 15, 2014

Slide 2

Finance and Staffing (as of 7-17-15)



TOTAL STAFFING

	FEMA	Non-FEMA	Total
Jan-14	312	241	553
Jul-14	268	199	467
Jan-15	212	152	364
Jul-15	195	98	293

FINANCIAL ASSISTANCE SUMMARY

		Current	Est. Life of Disaster	
Public Assistance	Obligated	\$ 9,035,737,559	\$ 12,990,511,001*	* Likely to rise
HMGP	Approved	\$ 381,199,679	\$ 1,381,938,000	
Individual Assistance	Approved	\$ 1,095,665,000	\$ 1,095,665,000	
SBA	Approved	\$ 1,575,401,100	\$ 1,575,401,100	
NFIP	(Est. Disbursed)	\$ 3,928,157,910	\$ 3,928,157,910	
TOTAL		\$ 16,016,161,248	\$ 20,971,673,011	

Common Operating Picture

FEMA-4085-DR-NY

Disaster Declared: 10-29-2012

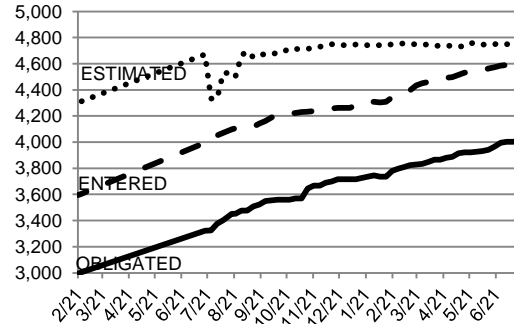
Sandy Recovery Office Opened: Jan 15, 2014

Slide 3

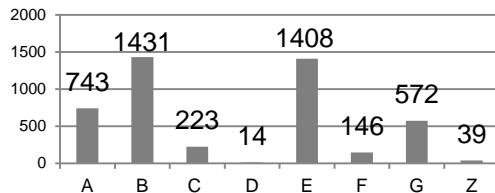
Public Assistance (as of 7-17-15)

- GOALS:**
- 1) Complete all Version 0's by August 31, 2015
 - 2) Obligate 95 % of projects by 3 year anniversary (Oct. 2015)

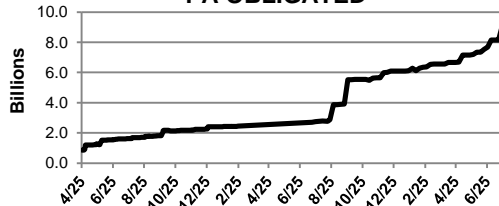
Total PWs



PWs Entered Into EMMIE (by Category)



PA OBLIGATED



Top 12 Public Assistance Projects

	Applicant Name	Estimated Amount (100%)	Total Obligated 7-9 (90%)
1	NEW YORK CITY HOUSING AUTHORITY	\$3,032,726,894.23	\$21,995,518.31
2	NEW YORK CITY HEALTH AND HOSPITALS CORPORATION	\$1,830,022,667.09	\$551,494,979.43
3	LONG ISLAND POWER AUTHORITY	\$1,479,026,592.28	\$1,274,583,183.20
4	NYU MEDICAL CENTER	\$1,379,281,892.97	\$1,248,741,184.47
5	NASSAU COUNTY PUBLIC WORKS	\$941,606,716.30	\$818,678,236.20
6	NEW YORK CITY DEPARTMENT OF ENVIRONMENTAL PROTECTION	\$884,961,097.92	\$731,019,540.13
7	NEW YORK CITY DEPARTMENT OF PARKS AND RECREATION	\$829,113,943.56	\$532,865,991.16
8	NEW YORK CITY SCHOOL CONSTRUCTION AUTHORITY	\$661,574,696.10	\$314,311,305.27
9	METROPOLITAN TRANSPORTATION AUTHORITY (MTA)	\$395,363,308.94	\$356,491,554.13
10	NEW YORK CITY POLICE DEPARTMENT	\$262,163,752.99	\$211,770,453.09
11	PORT AUTHORITY OF NEW YORK & NEW JERSEY	\$234,179,763.88	\$163,757,061.53
12	NEW YORK CITY FIRE DEPARTMENT	\$226,712,998.75	\$200,825,351.09

Common Operating Picture

FEMA-4085-DR-NY

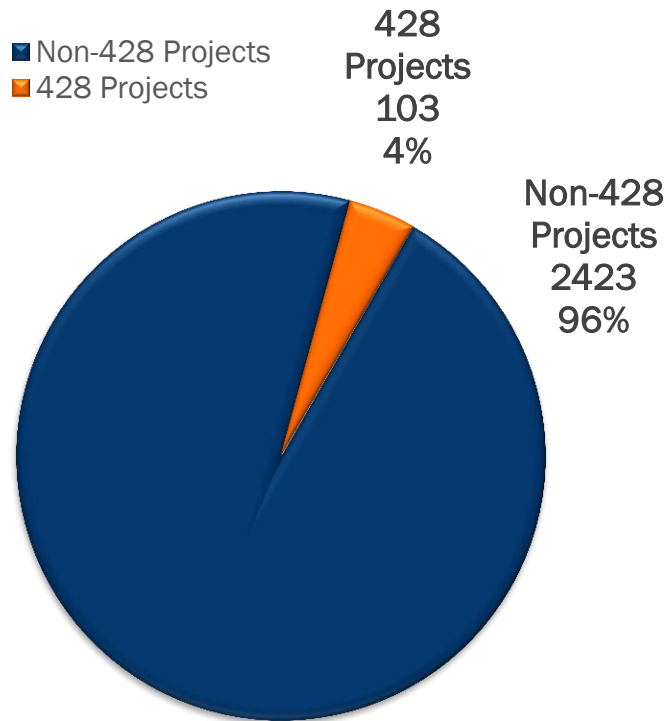
Disaster Declared: 10-29-2012

Sandy Recovery Office Opened: Jan 15, 2014

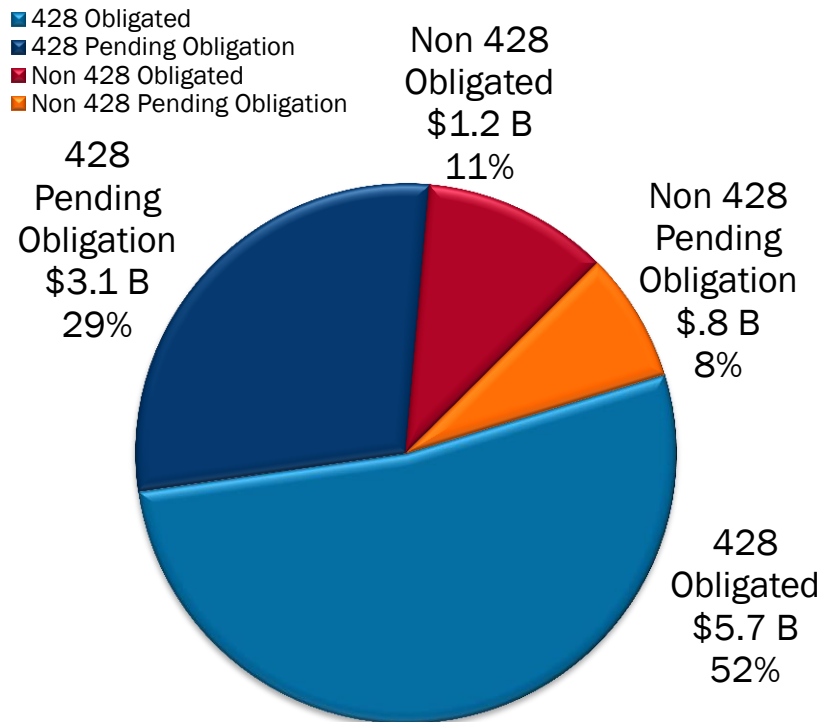
Slide 4

Public Assistance (as of 7-17-15)

428 Projects from Total Projects



All Projects: Pending and Obligated *Amount by Project Status Federal Share*



Common Operating Picture

FEMA-4085-DR-NY

Disaster Declared: 10-29-2012

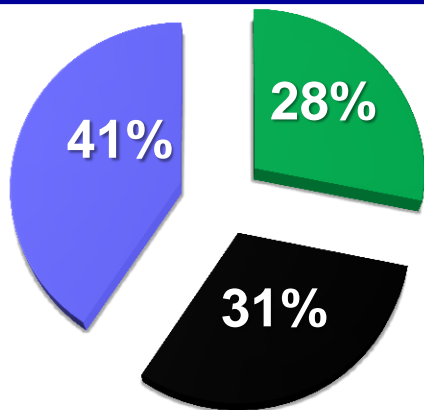
Sandy Recovery Office Opened: Jan 15, 2014

Slide 5

Hazard Mitigation (as of 7-17-15)

HMGP Funds at 30-Month Lock-In

\$1,381,938,188



■ Total Approved	\$381,199,679
■ For Phases	\$421,572,661
■ Under Review	\$550,509,469

Total Federal Share Received To Date (Includes Projects at a 100% Global Match)

\$1,353,281,809

TOP 3 projects out of total of 73 (as of 7/21/15):

Bridge Scouring Project:	\$518 million
Suffolk Sewers Project:	\$266 million (\$388 million w/ other agencies)
Mesonet Project:	\$23.6 million

Common Operating Picture

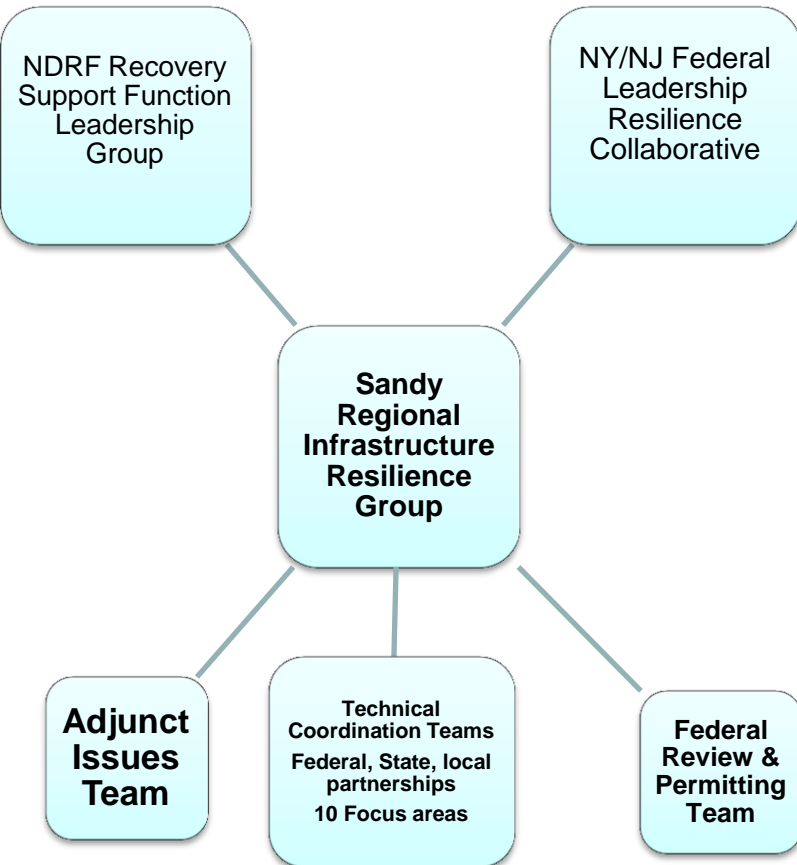
FEMA-4085-DR-NY

Disaster Declared: 10-29-2012

Sandy Recovery Office Opened: Jan 15, 2014

Slide 6

Regional Resilience Coordination (as of 7-17-15)



The **Interagency Regional Coordination (IRC)** group provides the primary mechanism for interagency coordination at the SRO:

- Partnerships with Primary Federal Funders.
- Recovery Support Functions.
- Sandy Recovery Infrastructure Resilience Coordination.
 1. Unified Federal Review
 2. Duplication of Benefits
 3. BCA Impact
 4. Sequence
 5. Prioritization
 6. Database + Mapping
 7. Resilience Gap Identification
- Inter Agency Agreements (HUD, USACE, HHS, EPA, DOT)



FEMA

FEMA's mission is to support our citizens and first responders to ensure that as a nation we work together to build, sustain, and improve our capability to prepare for, protect against, respond to, recover from, and mitigate all hazards.