

The Disaster Center is dedicated to the idea that disaster mitigation is cost effective and individuals pursuing their own interest are the greatest potential force for disaster reduction.

Please consider making a small donation to the Disaster Center



When disaster mitigation is cost effective, we are on the road to bringing disasters to an end.



FEMA

Daily Operations Briefing

Saturday, July 23, 2016

8:30 a.m. EDT

Significant Activity: July 22-23



Significant Events: Tropical Storm Darby

Tropical Activity:

- Atlantic – Tropical cyclone activity not expected next 48 hours
- Eastern Pacific – Post Tropical Storm Estelle (FINAL); Tropical Storm Georgette; Tropical Storm Frank
- Central Pacific – Tropical Storm Darby
- Western Pacific – No activity threatening U.S. territories

Significant Weather:

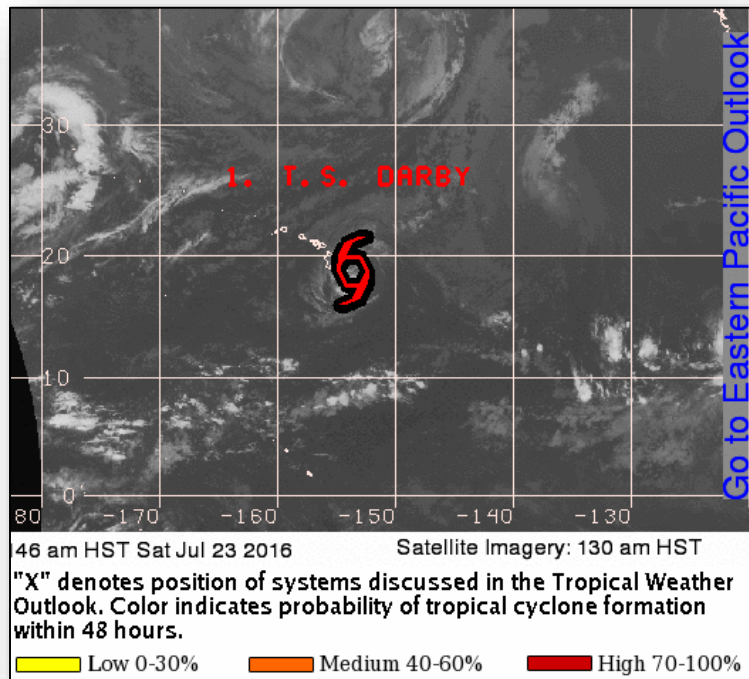
- Severe thunderstorms and flash flooding – Northern/Central Plains to Upper/Middle Mississippi Valleys
- Rain and thunderstorms – Southwest to Upper/Middle Mississippi Valleys and Great Lakes, Lower Mississippi Valley to Southeast, Ohio Valley and Mid-Atlantic; Northeast
- Elevated Fire Weather areas – CA, ID, WY, MT, SD & ND
- Red Flag Warnings – CA, WY, SD & MT
- Excessive Heat Warnings – Southwest, Plains, Middle/Upper Mississippi and Ohio valleys and Northeast
- Space Weather – Moderate past 24 hours with R2 radio blackouts; none predicted next 24 hours

Earthquake Activity: M5.2 – King Salmon, AK

Wildfire Activity: No significant activity

Declaration Activity: Request for Major Disaster Declaration - KS

Tropical Outlook - Central Pacific



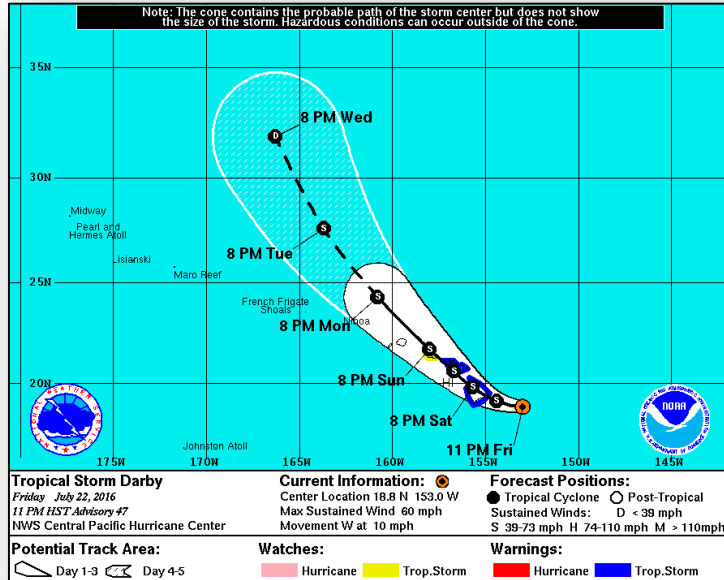
Tropical Storm Darby: (Advisory #47A as of 8:00 a.m. EDT)

- Located 120 miles ESE of Hilo, HI
- Moving W at 10 mph
- Forward motion expected to slow slightly today followed by a turn NW tonight and Sun
- Forecast to pass over the Big Island today and Maui tonight
- Maximum sustained winds 60 mph
- Some weakening forecast next 48 hours
- Tropical storm force winds extend 125 miles

Watches/Warnings

- Tropical Storm Warning in effect for Hawaii and Maui counties
- Tropical Storm Watch in effect for Oahu

Central Pacific - Tropical Storm Darby



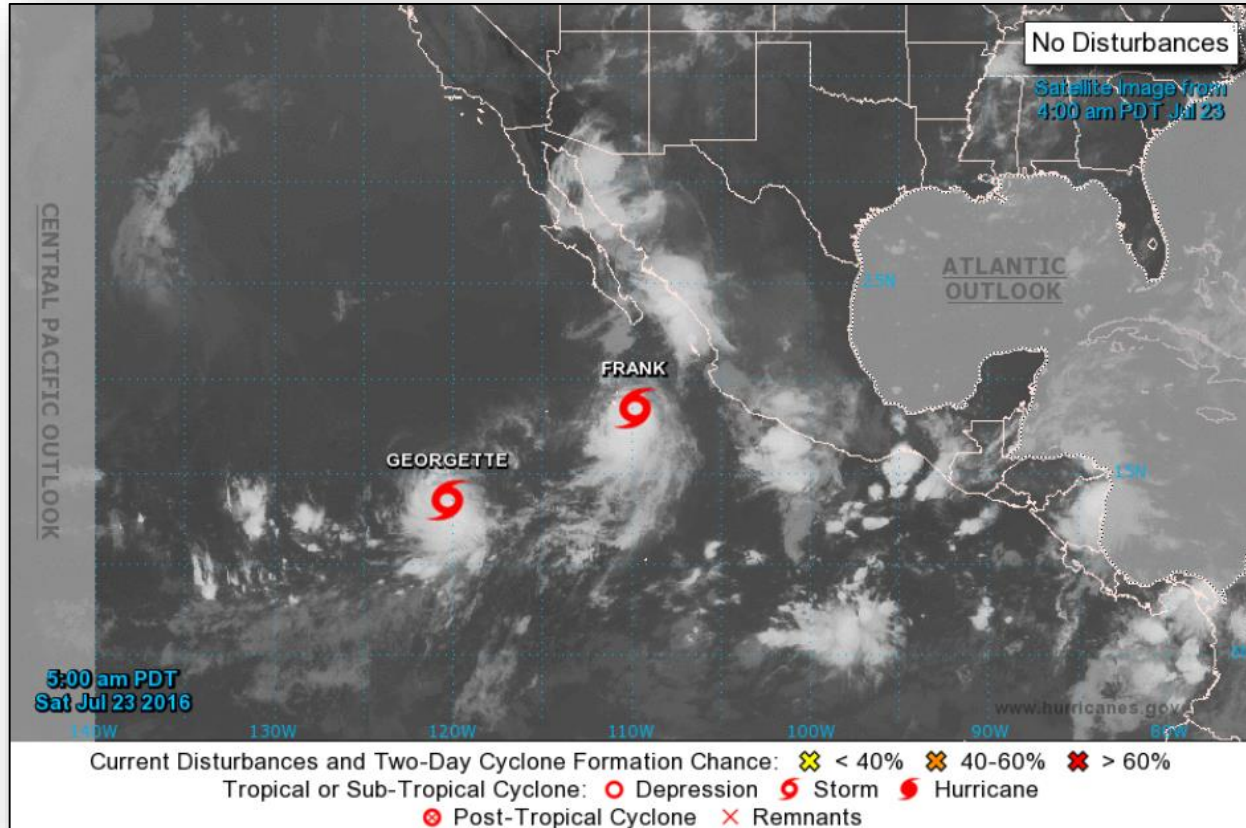
Impacts:

- Tropical storm force winds expected over the Big Island this morning, over portions of Maui County this afternoon and evening
- Tropical storm force winds are possible over Oahu Sun into Mon
- Surf could reach 15 to 25 feet along windward facing shores of Big Island and Maui County; large swells will affect the rest of the islands
- Total rainfall accumulations of 10-15 inches with locally higher amounts
- Life threatening flash floods and landslides possible
- All ports closed for Hawaii and Maui counties
- 2 shelters open with 109 occupants (ARC Midnight Shelter Count as of 6:21 am EDT)

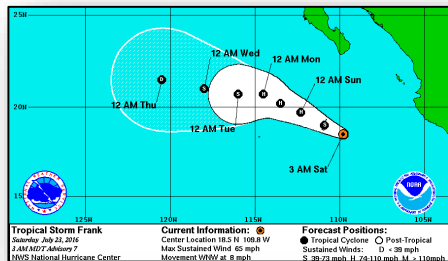
Response/Preparations:

- Governor declared State of Emergency
- HI EOC will go to Full Activation at 12:00 pm EDT
- HI National Guard activated for possible damage assessments
- Region IX IMAT and LNOs in place at HI and Maui County EOCs
- Region IX RRCC not activated; RWC remains at Watch/Steady State
- No requests for FEMA assistance

Tropical Outlook - Eastern Pacific

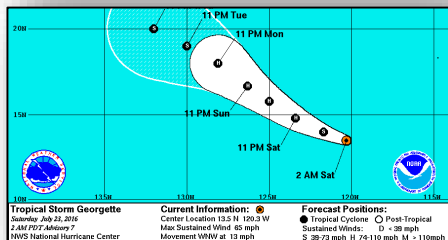


Tropical Outlook – Eastern Pacific



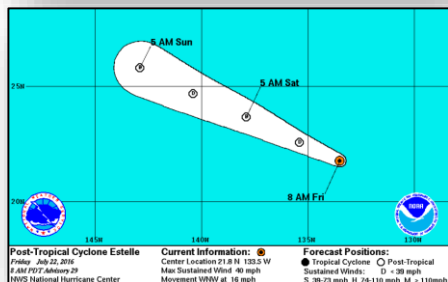
Tropical Storm Frank: (Advisory #7 as of 5:00 a.m. EDT)

- Located 305 miles S of southern tip of Baja California, Mexico
- Moving WNW at 8 mph
- This motion expected to continue with some decrease in forward speed next couple of days
- Maximum sustained winds 65 mph
- Forecast to become a hurricane later today or Sun
- Tropical storm force winds extend 90 miles



Tropical Storm Georgette: (Advisory #7 as of 5:00 a.m. EDT)

- Located 940 miles SW of southern tip of Baja California, Mexico
- Moving WNW at 13 mph
- WNW or NW motion with decrease in forward speed expected next couple of days
- Maximum sustained winds 65 mph
- Strengthening forecast next 48 hours; expected to become a hurricane later today
- Tropical storm force winds extend 60 miles

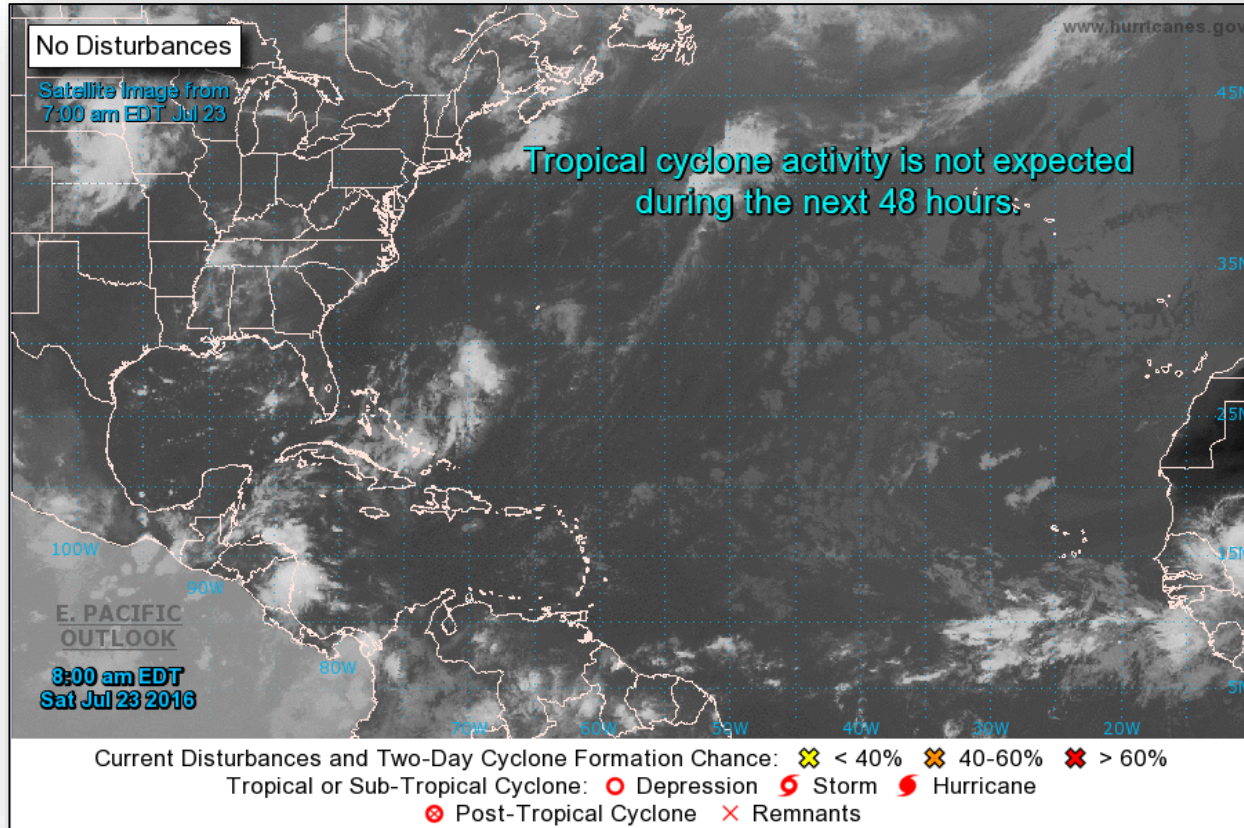


Post Tropical Cyclone Estelle: (Advisory #29 as of 11:00 a.m. EDT, Friday, July 22)

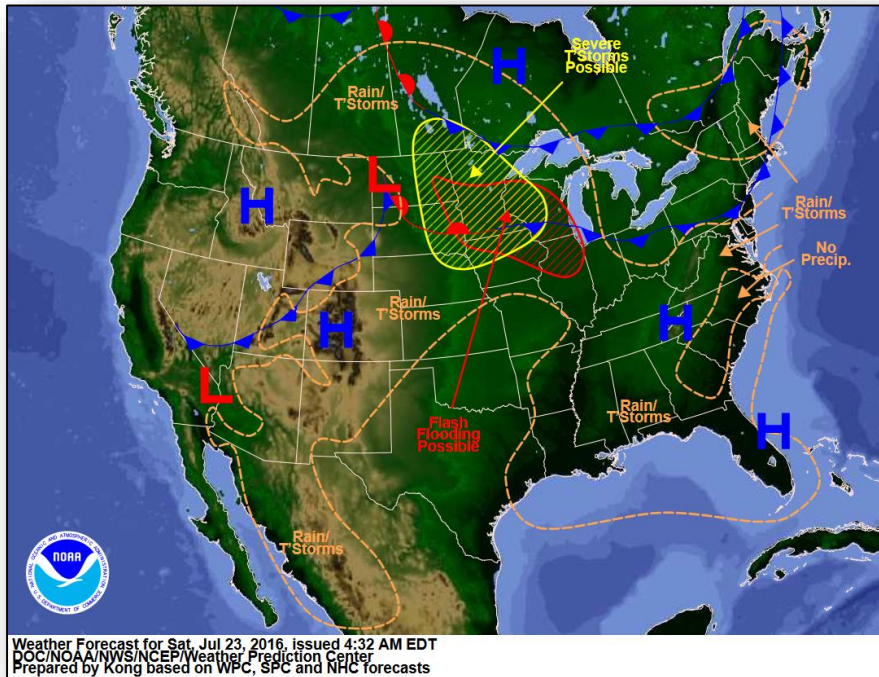
FINAL ADVISORY

- Located 1,505 miles W of southern tip of Baja California, Mexico
- Moving WNW at 16 mph
- This general motion expected to continue next couple of days
- Maximum sustained winds 40 mph
- Expected to dissipate in two or three days
- Tropical storm force winds extent 70 miles

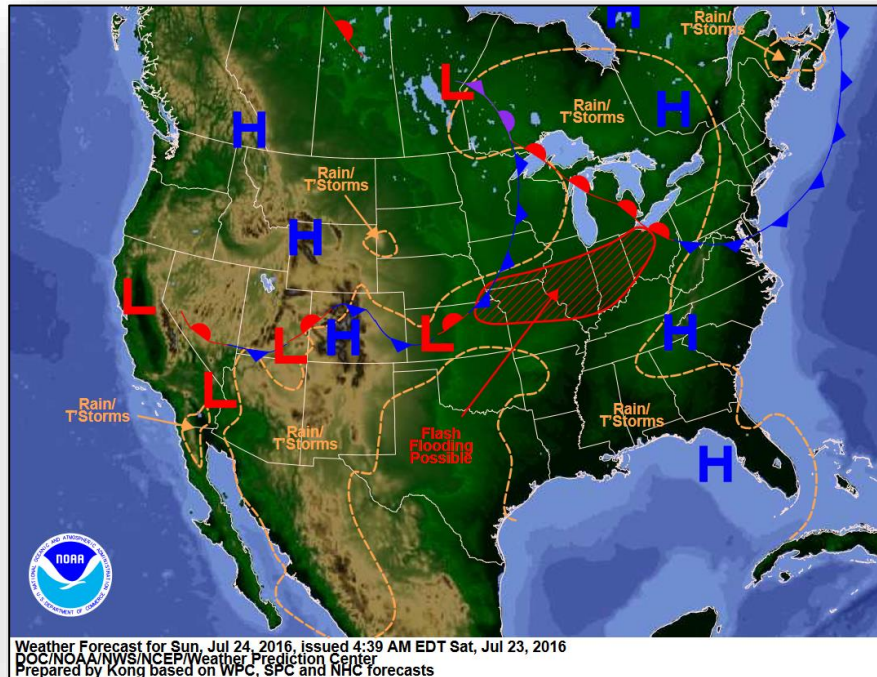
Tropical Outlook - Atlantic



National Weather Forecast

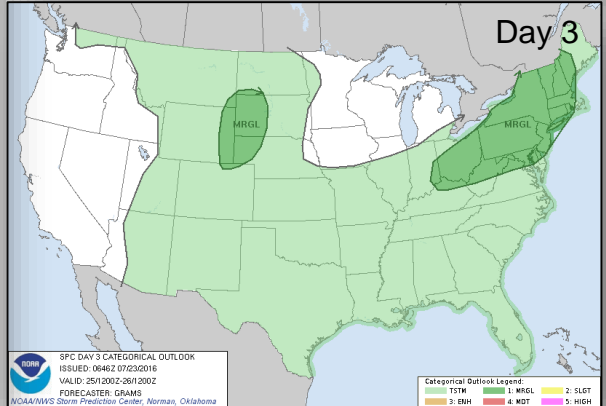
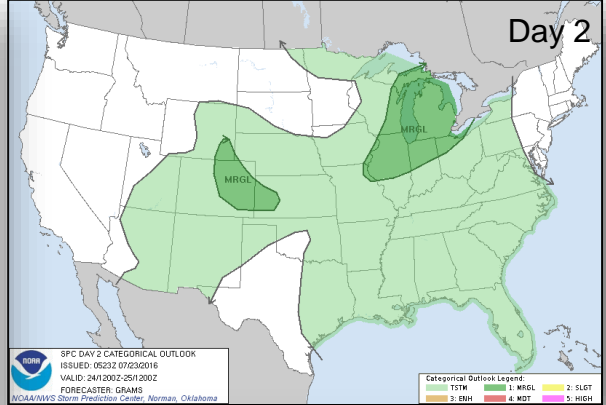
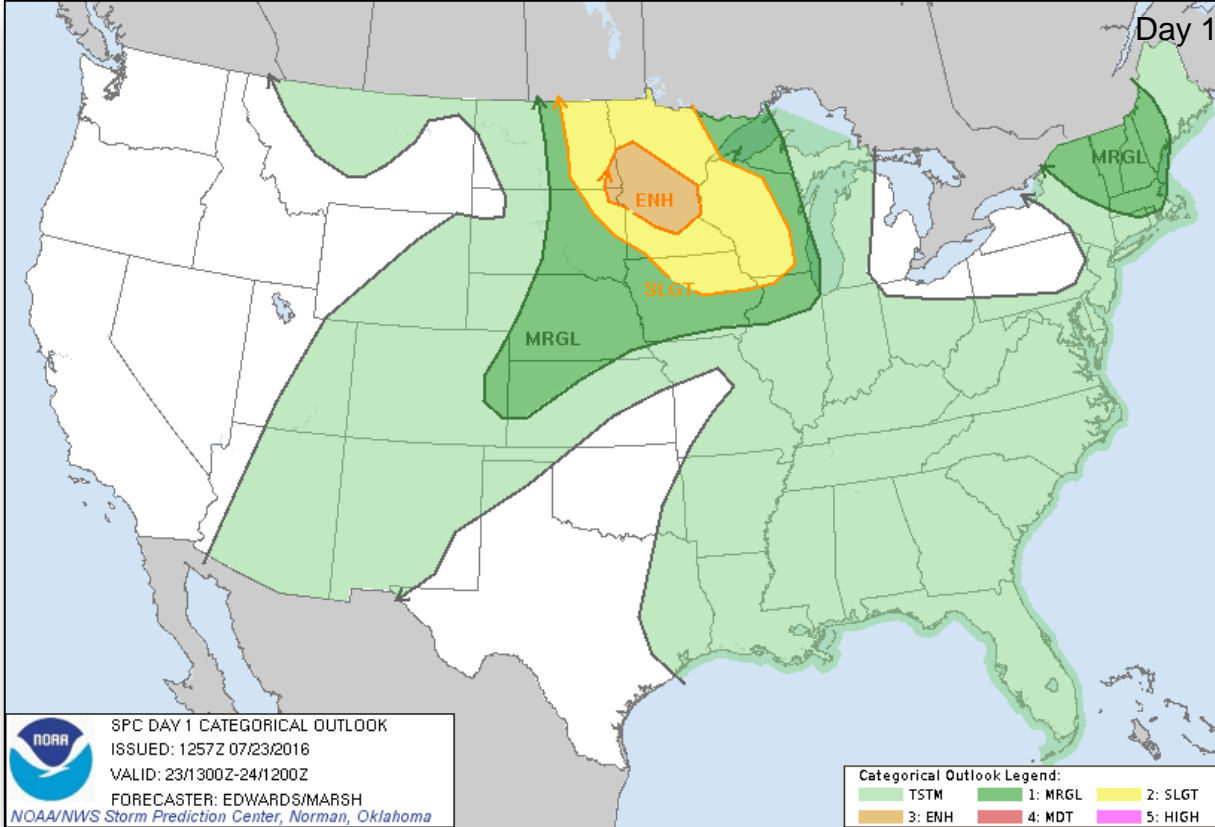


Today



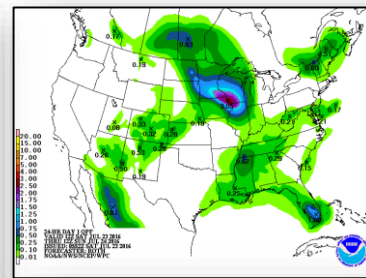
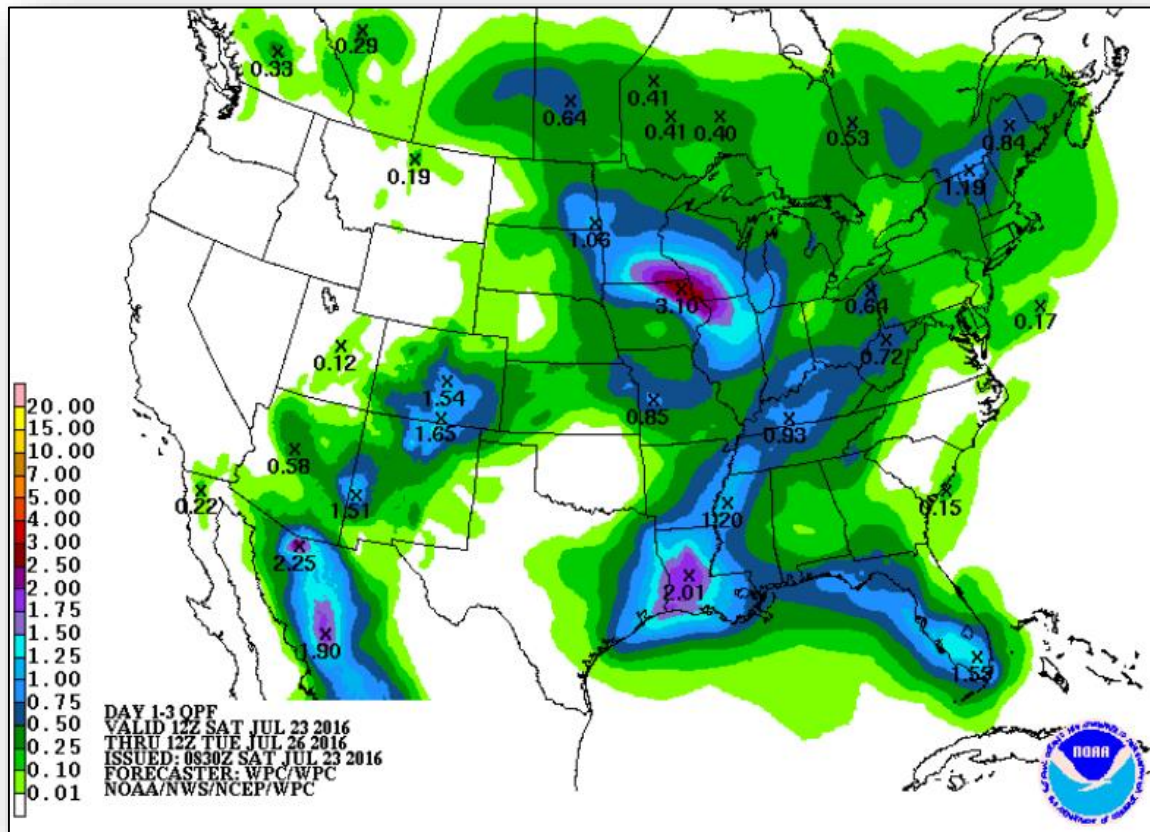
Tomorrow

Severe Weather Outlook – Days 1-3

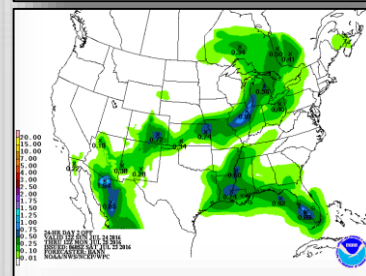




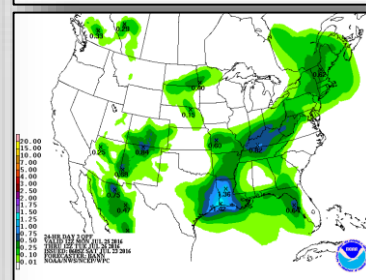
Precipitation Forecast – Days 1-3



Day 1

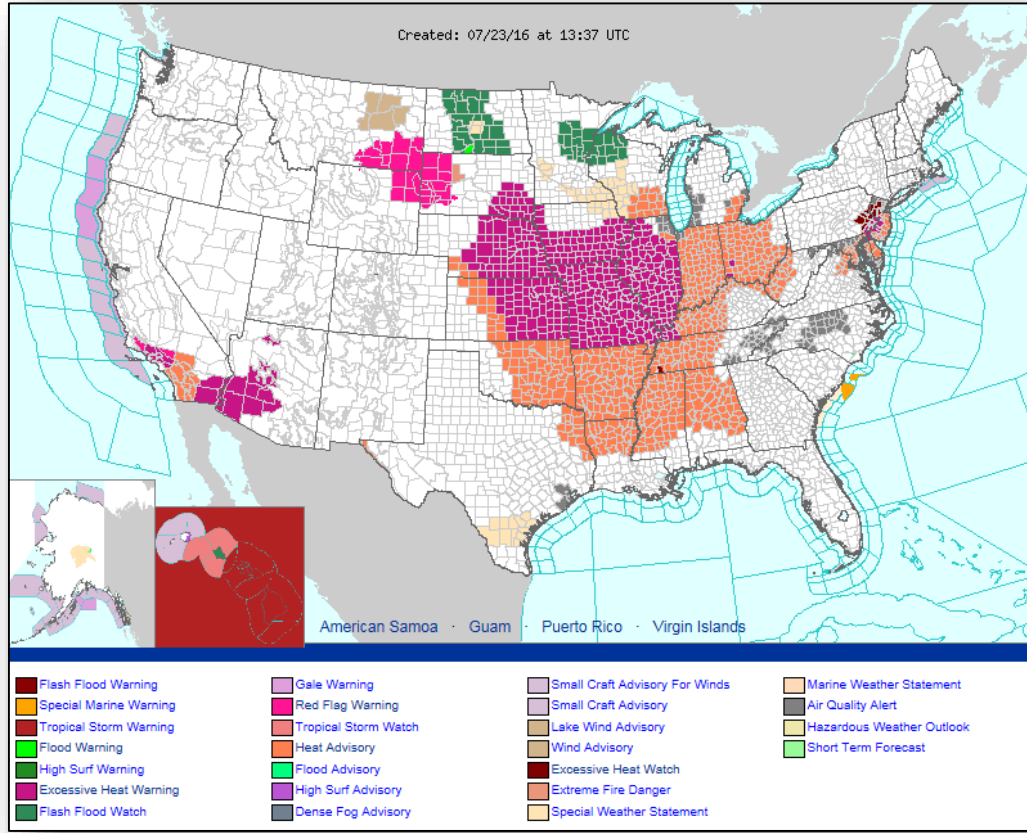


Day 2

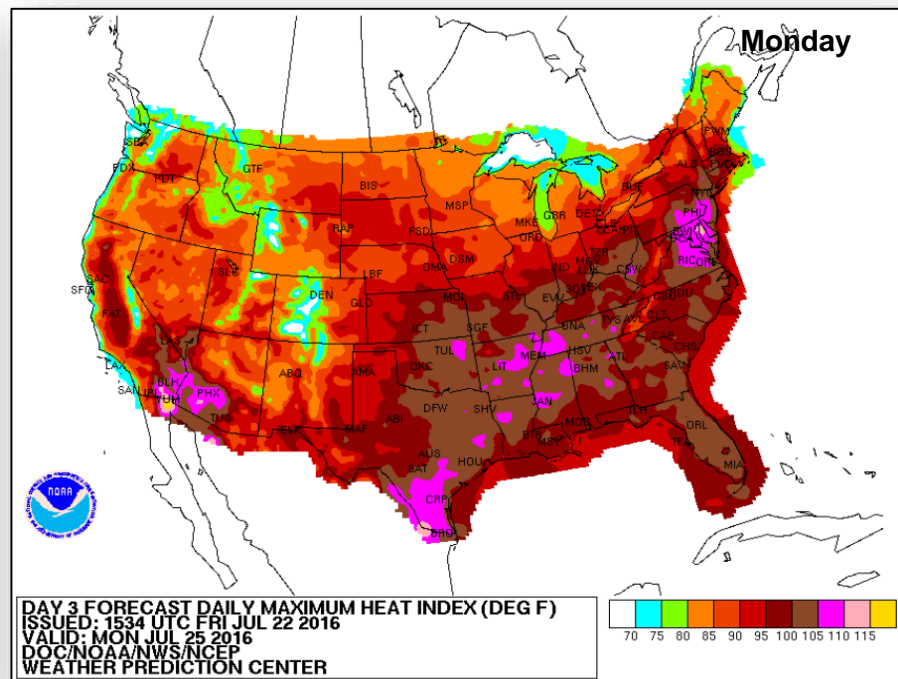
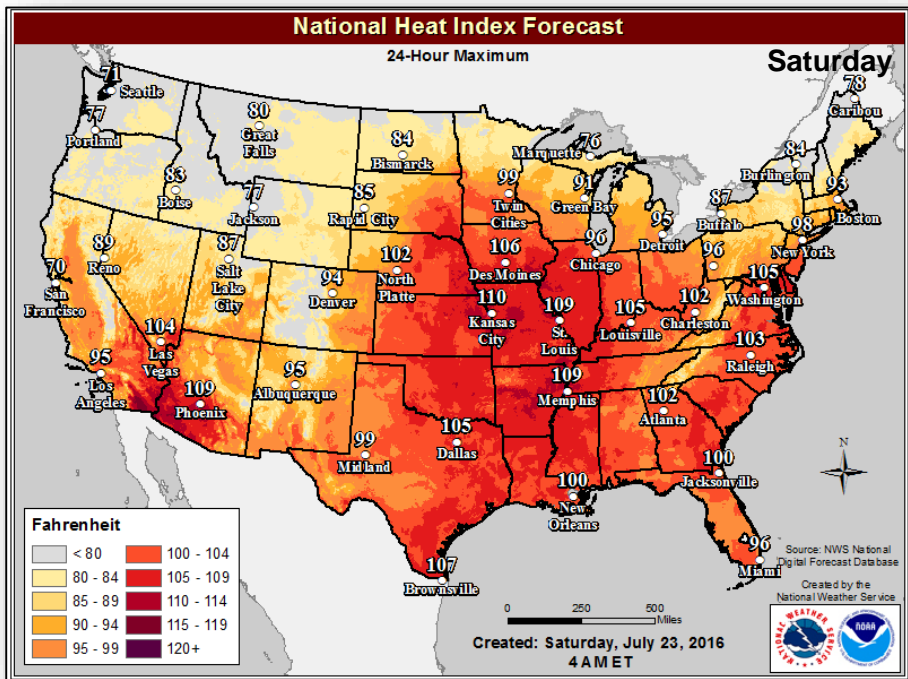


Day 3

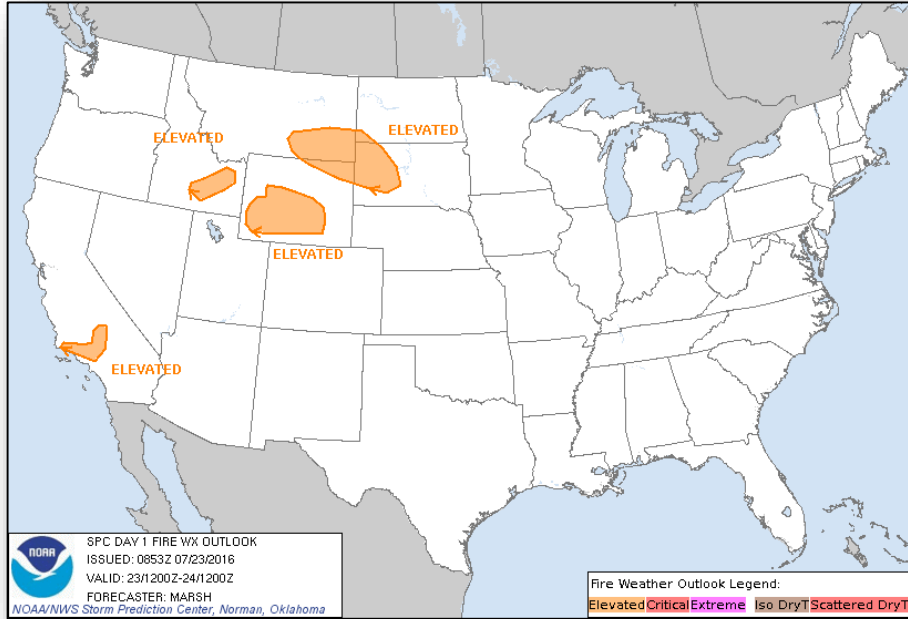
Active Watches & Warnings



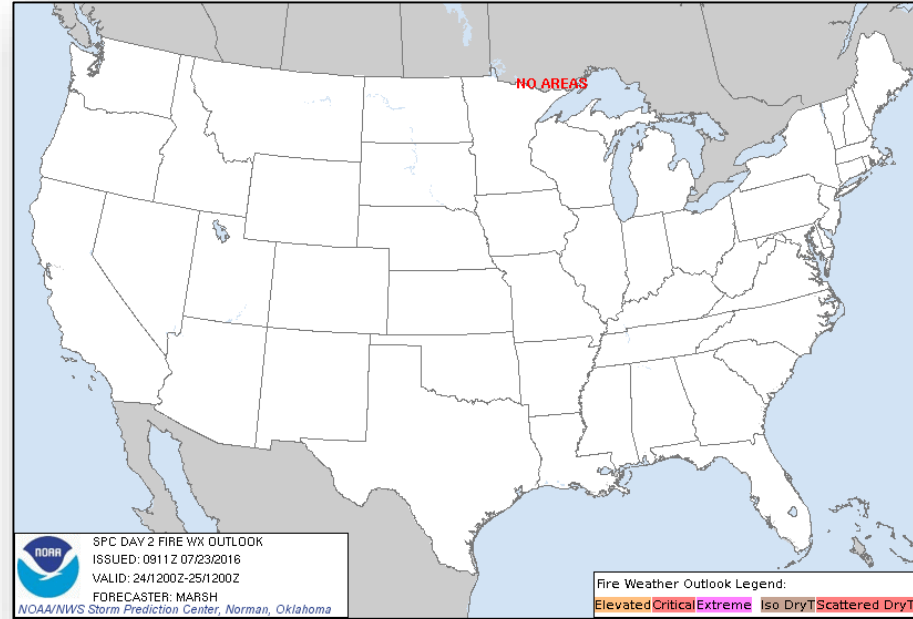
Prolonged Heat Wave



Fire Weather Outlook



Day 1



Day 2

Earthquake Activity – Alaska

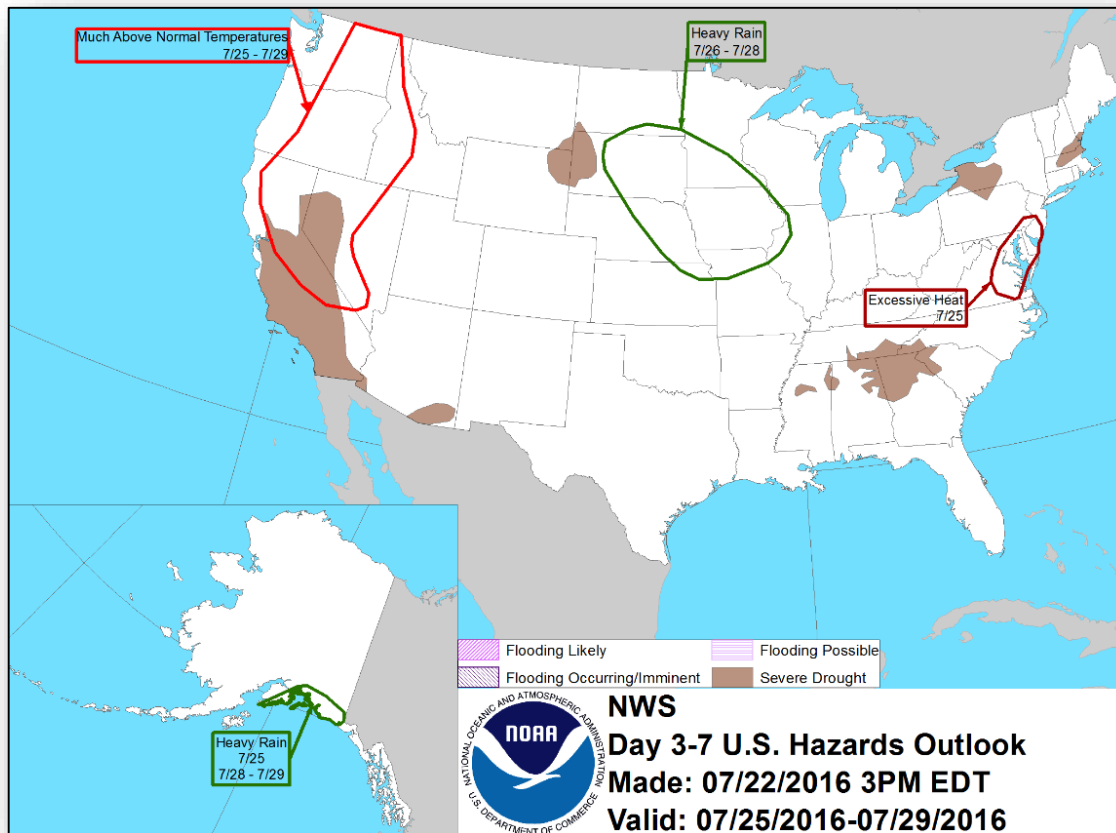


M5.2 – King Salmon, AK

- Occurred at 5:59 am EDT on July 23, 2016
- 80 miles ESE of Dillingham, AK (pop. 2,300); 298 miles SW of Anchorage
- Depth of 127 miles
- USGS issued a green PAGER alert indicating a low likelihood of casualties and damages
- Level IV on Modified Mercalli Intensity (MMI) scale: 2,000 exposed to light shaking, 5,000 exposed to weak shaking
- No reports of injuries or damages
- No tsunami warning issued
- No requests for FEMA assistance

ESTIMATED POPULATION EXPOSURE (k. * = 1,000)	..*	5k*	2k	0	0	0	0	0	0	0
ESTIMATED MODIFIED MERCALLI INTENSITY	I	II-III	IV	V	VI	VII	VIII	IX	X+	
PERCEIVED SHAKING	Not felt	Weak	Light	Moderate	Strong	Very Strong	Severe	Violent	Extreme	
POTENTIAL DAMAGE	Resistant Structures	none	none	none	V. Light	Light	Moderate	Moderate/Heavy	Heavy	V. Heavy
	Vulnerable Structures	none	none	none	Light	Moderate	Moderate/Heavy	Heavy	V. Heavy	V. Heavy

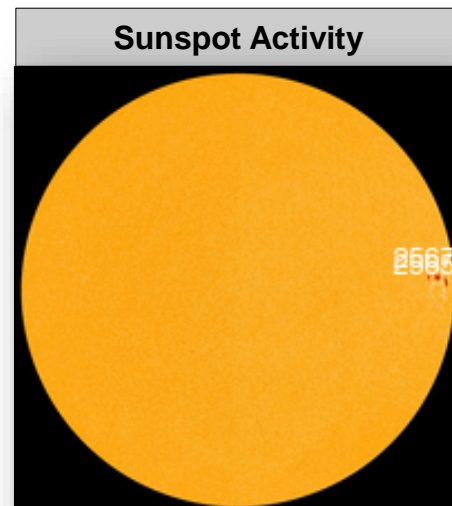
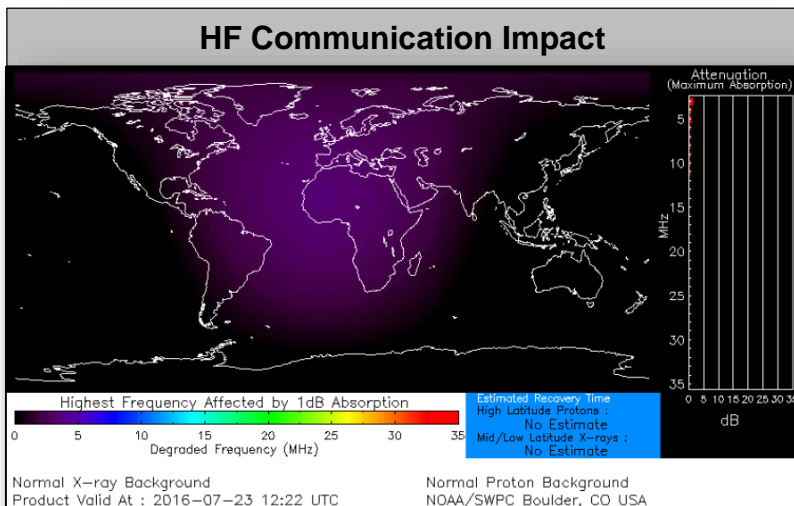
Hazards Outlook – July 25-29





Space Weather

	Past 24 Hours	Current	Next 24 Hours
Space Weather Activity	Moderate	None	None
Geomagnetic Storms	None	None	None
Solar Radiation Storms	None	None	None
Radio Blackouts	R2	None	None



Joint Preliminary Damage Assessments



Region	State / Location	Event	I/PA	Number of Counties		Start – End
				Requested	Complete	
V	WI	Severe Storms & Flooding July 11 -12, 2016	PA	8 counties 2 tribes	0 0	7/25 – TBD

Disaster Requests & Declarations



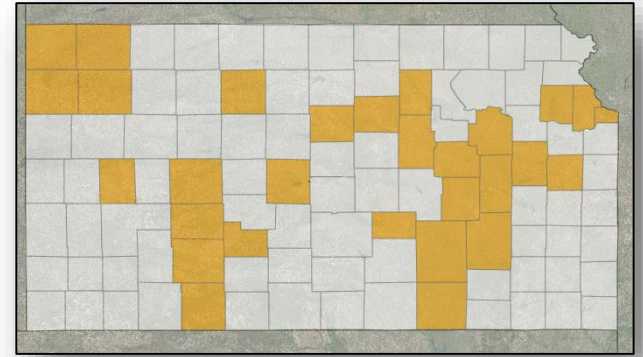
Declaration Requests in Process		Requests APPROVED (since last report)	Requests DENIED (since last report)
2	Date Requested	0	1
CA – DR Fire	July 15, 2016		Denied July 22, 2016
MT – DR Tornado	July 20, 2016		
KS – DR Severe Storms, Tornadoes, and Flooding	July 22, 2016		

Major Disaster Request – Kansas

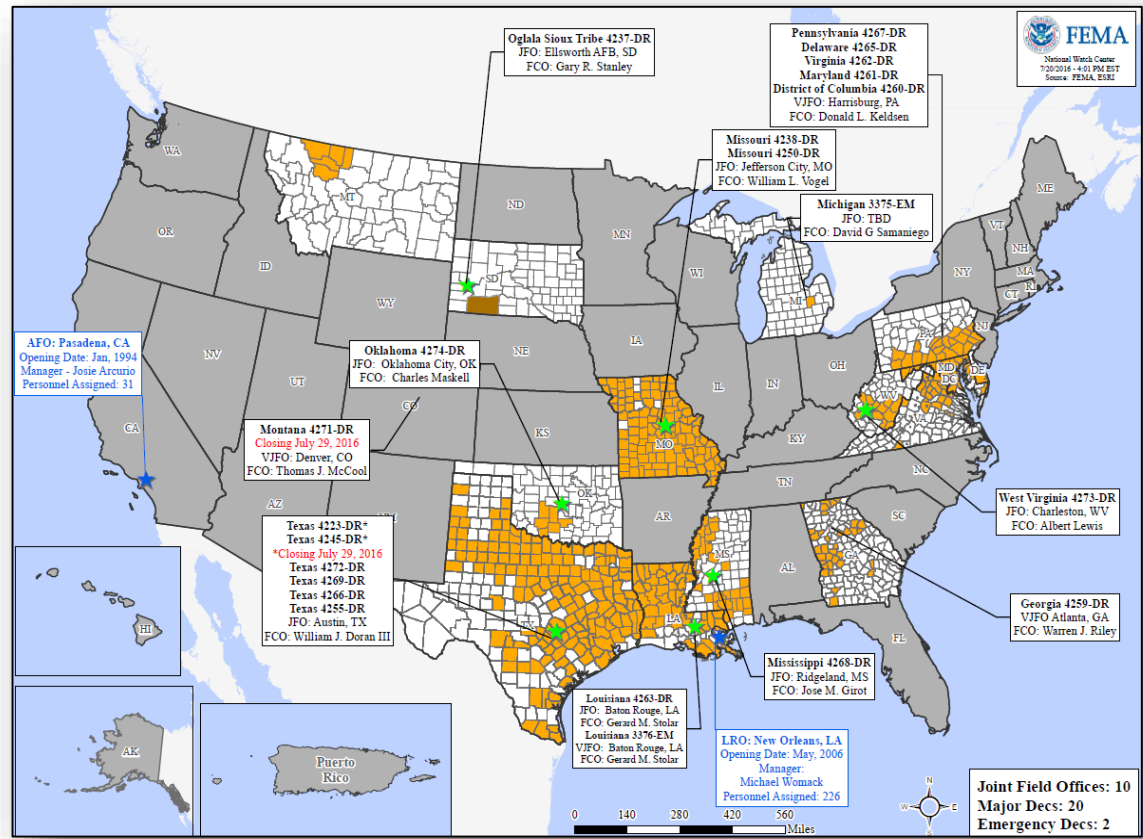


July 21, 2016

- Request for Major Disaster Declaration for state of Kansas for severe storms, tornadoes & flooding during the period of May 22-31, 2016
- Requesting:
 - Public Assistance for 29 counties
 - Hazard Mitigation statewide



Open Field Offices as of July 23, 2016



FEMA Readiness - Deployable Teams & Assets



Deployable Teams & Assets									
Resource	Status	Total	FMC Available		Partially Available	Not Available	Detailed, Deployed, Activated	Comments	Rating Criterion
FCO		37	11	30%	0	2	24		OFDC Readiness: FCO Green Yellow Red Type 1 3+ 2 1 Type 2 4+ 3 2 Type 3 4 3 2 FDRC 3 2 1
FDRC		9	2	22%	0	1	6		
US&R		28	26	93%	1	0	1	NJ TF-1 Partially Mission Capable PA TF-1 Red NMC for Federal Service (tasked locally for Democratic National Convention operations through July 29)	<ul style="list-style-type: none"> Green = Available/FMC Yellow = Available/PMC Red = Out-of-Service Blue = Assigned/Deployed
National IMAT		3	3	100%	0	0	0	West: Primary (On Call)	<ul style="list-style-type: none"> Green: 3 available Yellow: 1-2 available Red: 0 avail (<i>Individual N-IMAT red if 50% of Section Chiefs and/or Team Leader is unavailable for deployment.</i>)
Regional IMAT		13	6	46%	0	0	7	<u>Deployed:</u> Region I: WV (4273-WV) Region II: returned to Region from Frederick, MD Region III: WV (4273-WV) Region IV: Team 1 to WV (4273-WV) Region V: Reconstituting from OH (RNC) Region VI: Team 1 to TX (4266-TX) Region VII: TX (4272-TX) Region IX: Team 2 to HI (TS Darby)	<ul style="list-style-type: none"> Green: >6 teams available Yellow: 4 - 6 teams available Red: < 4 teams available R-IMAT also red if TL Ops/Log Chief is unavailable & has no qualified replacement
MERS Teams		18	15	83%	0	0	3	<u>Deployed:</u> Denton: 2 teams to TX (4272-TX) Denver: 1 team to OH (RNC 2016 through 7/25)	<ul style="list-style-type: none"> Green = >66% available Yellow = 33% to 66% available Red = <33% available

FEMA Readiness - National & Regional Teams



National/Regional Teams									
Resource	Status	Total	FMC Available		Partially Available	Not Available	Status	Comments	Rating Criterion
NWC	Green	5	5	100%	0	0	Watch / Steady State		<ul style="list-style-type: none"> • Green = FMC • Yellow = PMC • Red = NMC
NRCC	Green	2	2	100%	0	0	Not Activated		
HLT	Green	1	1	100%	0	0	Activated		
DEST	Green						Not Activated		
RRCCs	Green	10	10	100%	0	0	Not Activated		
RWCs/MOCs	Green	10	10	100%	0	0	Not Activated		



FEMA

FEMA's mission is to support our citizens and first responders to ensure that as a nation we work together to build, sustain, and improve our capability to prepare for, protect against, respond to, recover from, and mitigate all hazards.