

The Disaster Center is dedicated to the idea that disaster mitigation is cost effective and individuals pursuing their own interest are the greatest potential force for disaster reduction.

Please consider making a small donation to the Disaster Center



When disaster mitigation is cost effective, we are on the road to bringing disasters to an end.



FEMA

Daily Operations Briefing

Saturday, July 4, 2015

8:30 a.m. EDT

Significant Activity: July 4 – 5



Significant Events: Tropical Storm (TS) Chan-Hom (09W)

Tropical Activity:

- Atlantic: Tropical cyclone activity not expected next 48 hours
- Eastern Pacific: Disturbance 2 (Medium 50%)
- Central Pacific: Disturbance 1 (Low 20%) ; Disturbance 2 (Low 20%)
- Western Pacific: Tropical Storm Chan-Hom (9W); Tropical Storm Nangka (11W)

Significant Weather:

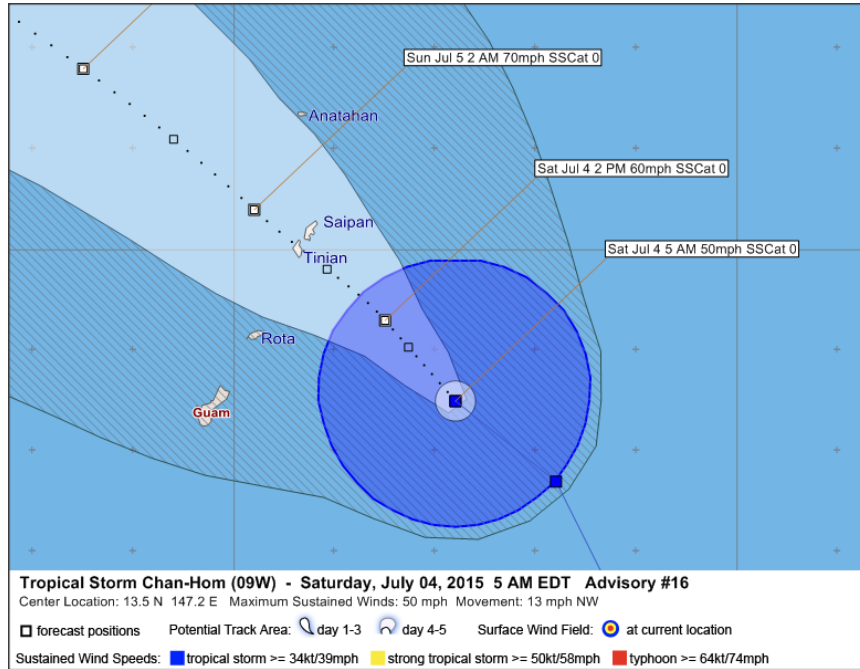
- Severe thunderstorms possible – Northern and Central Plains
- Rain and thunderstorms – Northern California, Central Great Basin, Southwest, Northern/Central Rockies, Northern/Central/Southern Plains, Lower Mississippi Valley across to Mid-Atlantic and Central Appalachians
- Flash flooding possible – Tennessee Valley
- Red Flag Warnings WA, OR & MT
- Elevated Fire Weather: WA & OR

Space Weather:

- Past 24 hours: Minor (R1) radio blackouts occurred; Next 24 hours: Minor (G1) geomagnetic storms predicted

Declaration Activity: None

Tropical Storm Chan-Hom (09W)



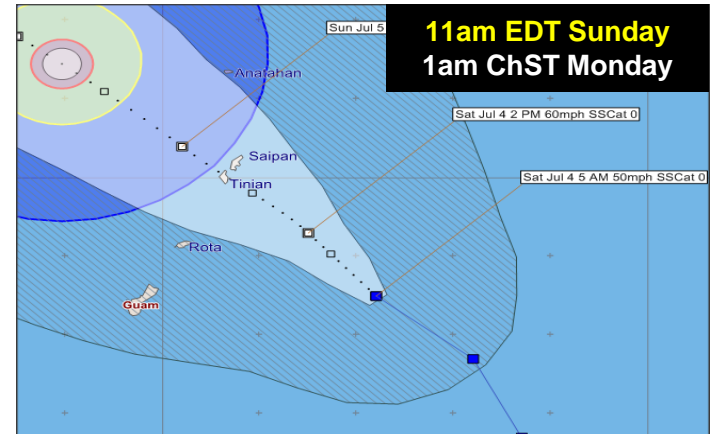
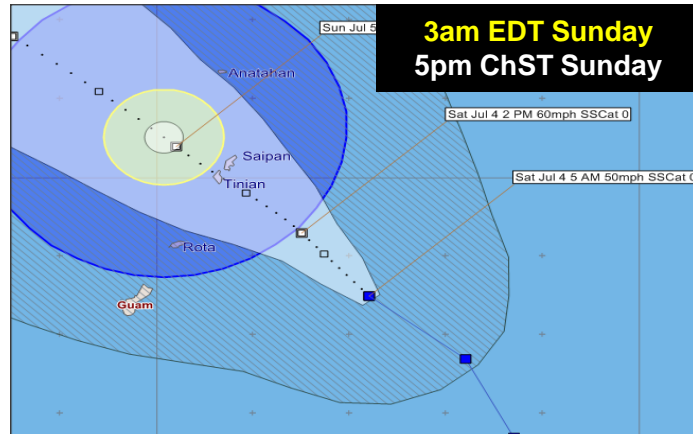
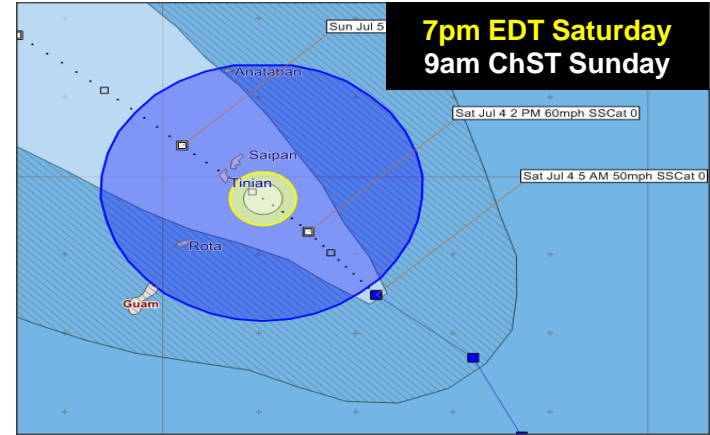
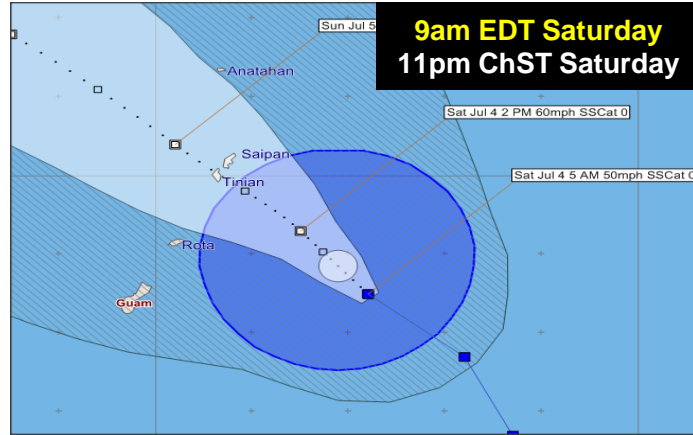
As of 5:00 a.m. EDT

- Located 140 miles E/SE of Rota; moving NW at 13 mph
- Maximum sustained winds is 50 mph, with higher gusts
- Tropical Storm Chan-Hom will continue to move NW, though some erratic motion is still possible
- Tropical storm-force winds extend outward up to 100 miles
- Forecast to slowly intensify and possibly become a typhoon again west of the Marianas
- A Typhoon Warning in effect for Saipan and Tinian; Tropical Storm Warning in effect for Rota

Potential Impacts to Northern Mariana Islands:

- **Wind Damage:** Will impact poorly constructed buildings and secondary power lines
- **Coastal Inundation:** 2 to 3 feet for Saipan and Tinian, and 1 to 2 feet for Rota, especially along east facing shores
- **Rainfall:** 6+ inches through early Monday morning leading to flooding of roads in poor drainage areas and houses in low-lying areas close to streams and rivers

TS Chan-Hom (09W) – Wind Timing



TS Chan-Hom (09W) – Wind Timing



Based on Advisory 16 Issued 7/4/2015 5 AM EDT

Wind Timing and Intensity Chart for All Affected Areas

Meaning Of Report

This chart represents wind arrival and departure details for all locations that are currently forecast to have tropical storm or greater winds during the next 72 hours.

Cautionary Note:

This information is quite specific and is subject to large forecast errors. You should NOT use these wind forecasts until just before landfall, and then only as a general indication of the expected wind patterns.

	Saturday 7/4											Sunday 7/5											
	5 AM	7 AM	9 AM	11 AM	1 PM	3 PM	5 PM	7 PM	9 PM	11 PM	1 AM	3 AM	5 AM	7 AM	9 AM	11 AM	1 PM	3 PM	5 PM	7 PM	9 PM	11 PM	
WP Saipan				■	■	■	■	■	■	■	■	■	■	■	■								
WP Tinian				■	■	■	■	■	■	■	■	■	■	■	■								
WP Rota				■	■	■	■	■	■	■	■	■	■	■	■								
WP Anatahan							■	■	■	■	■	■	■	■	■	■	■	■	■	■	■	■	■
WP Alamagan																							

Sustained Wind Speeds: ■ Tropical Storm \geq 34kt/39mph ■ Strong Tropical Storm \geq 50kt/58mph ■ Typhoon \geq 64kt/74mph

TS Chan-Hom (09W) - Response

Impacts:

- No significant impacts, at this time
- Seaports and airports are closed in Rota, Saipan and Tinian
- Seaport is closed in Guam, but the airports are open

Territory Response

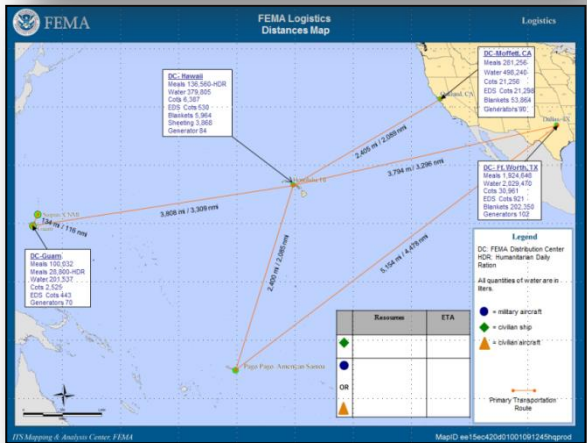
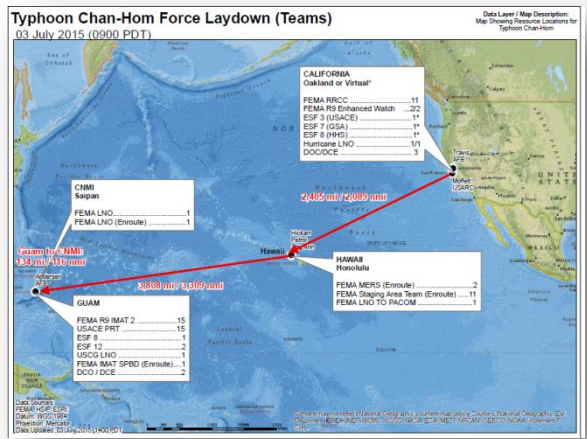
- Guam EOC is Partially Activated; CNMI is Fully Activated
- Open shelters/occupants – Saipan: 30 w/ 30 occupants; Tinian: 2 w/ 2 occupants
- No shortfalls reported

FEMA Region IX

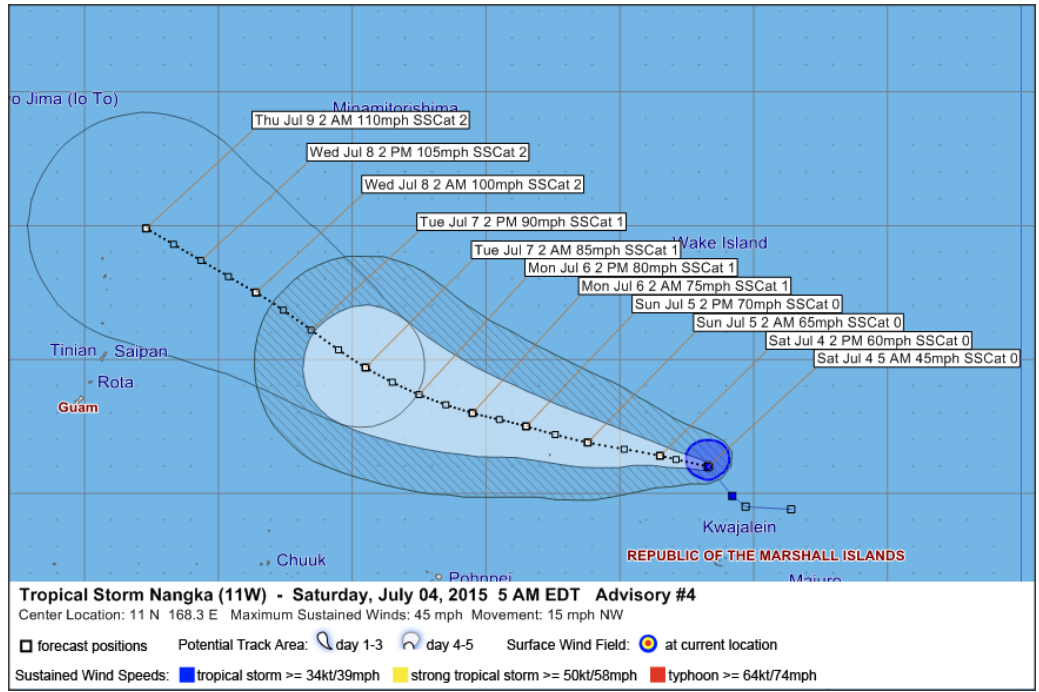
- RWC – Enhanced Watch
- RRCC – Level II (day shift only, 11:00 am – 11:00 pm EDT) with ESFs 3, 7, 8, DCO/DCE, & Hurricane Liaison
- Regional IMAT deployed to Guam w/MERS, ESF-3, 8, 12, DCO/DCE & USCG LNO
- Two FEMA LNOs deployed to Saipan
- Mission assignments have been issued to GSA, HHS, USACE and DOE for activations

FEMA Headquarters

- National Watch Center (NWC) is at Enhanced Watch, 24/7
- Logistics FSA/ISB Team Charlie, and LNO to PACOM in Hawaii



Western Pac – Tropical Storm Nangka (11W)



As of 5:00 a.m. EDT

- Located 1,600 miles E of Guam; moving NW at 15 mph
- Maximum sustained winds is 45 mph, higher gusts
- Tropical Storm Nangka is expected to turn the W/NW over the next couple of days
- Forecast to continue intensifying over the weekend
- No watches or warnings in effect for U.S. territories

Train Derailment – Tennessee (Final)



Maryville, TN (Blount County)

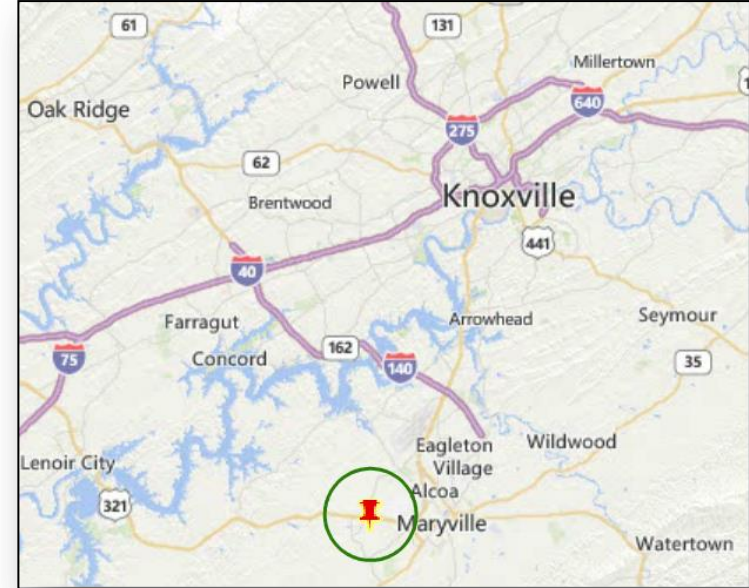
- At approximately 1:00 a.m. EDT July 2, a CSX train derailed near Maryville.
- One car carrying 25,000 gallons of Acrylonitrile caught on fire and produced hydrogen cyanide (HCN) as a byproduct

Impacts

- TN-EMA & FEMA Region IV report the fire is extinguished
- 1.5 mile evacuation zone has been lifted; residents allowed to return home
- 1 shelter with 0 occupants; most people went to visit friends/relatives
- 12 responders hospitalized due to smoke inhalation
- 45 individuals treated for exposure (25 released)
- EPA continues to sample/monitor air quality within the impacted area
- No fatalities have been reported

State/FEMA Response:

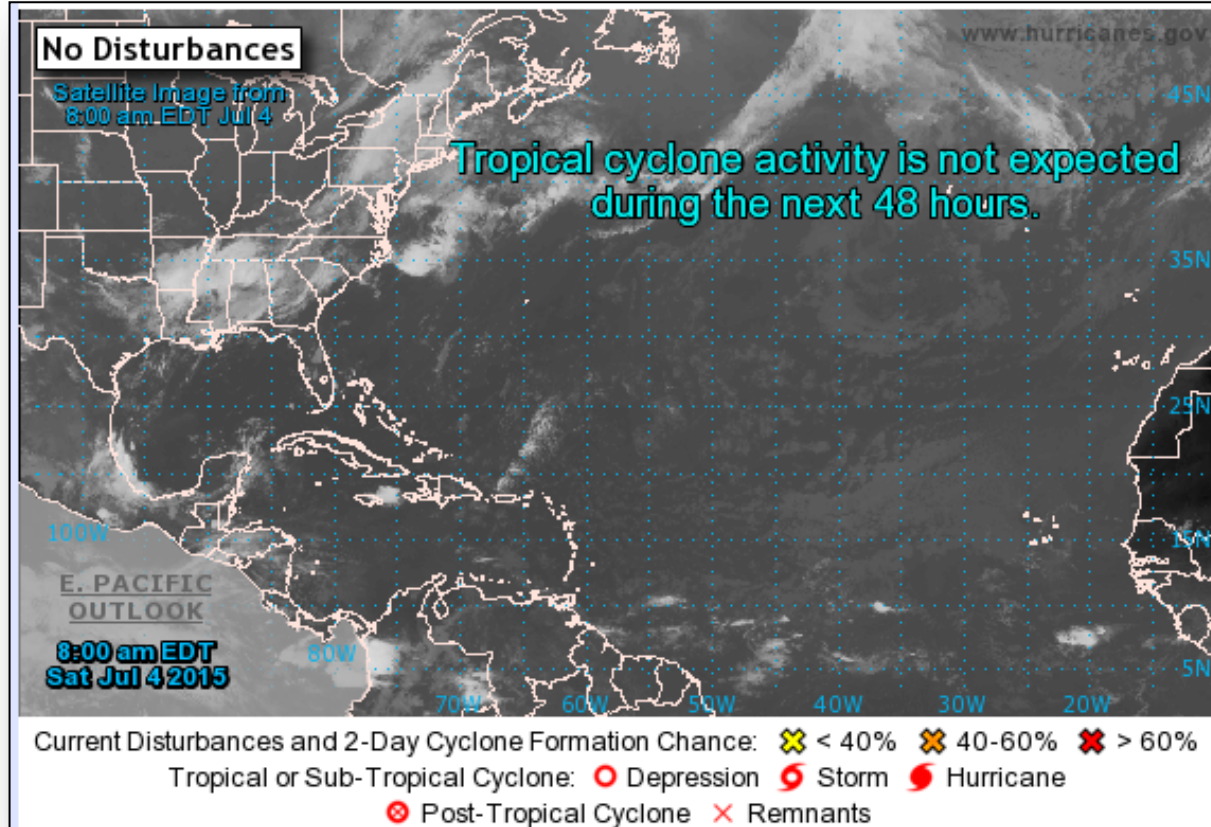
- TN State EOC remains Partially Activated (Monitoring)
- IMAAC Charter deactivated
- FEMA Region IV remains at Watch/Steady State
- No request for immediate FEMA assistance



2-Day Tropical Outlook – Atlantic



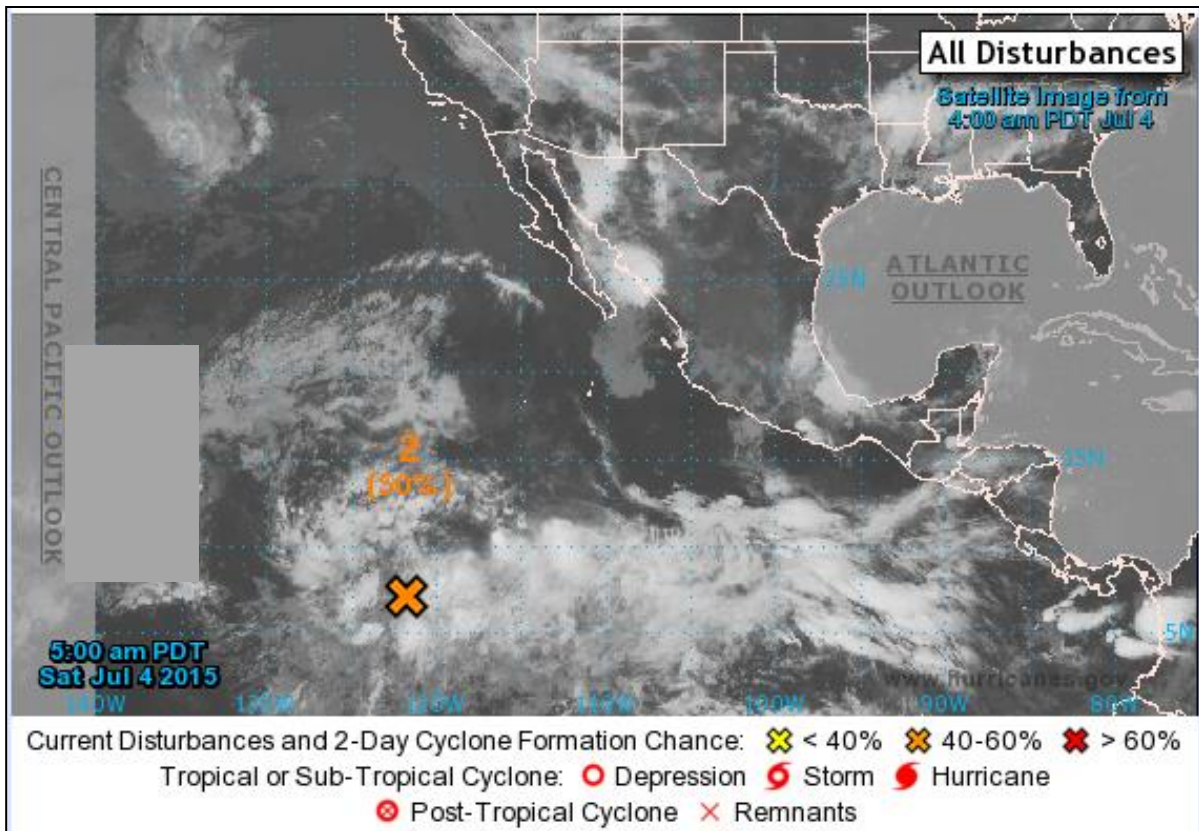
FEMA



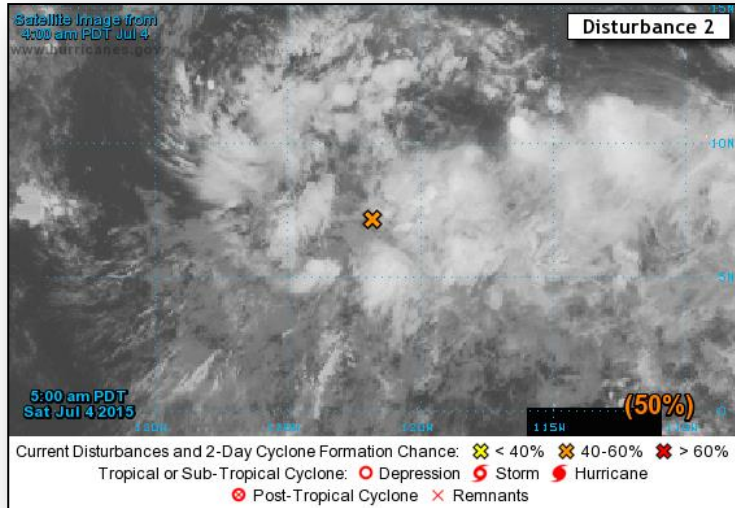
2-Day Tropical Outlook – Eastern Pacific



FEMA



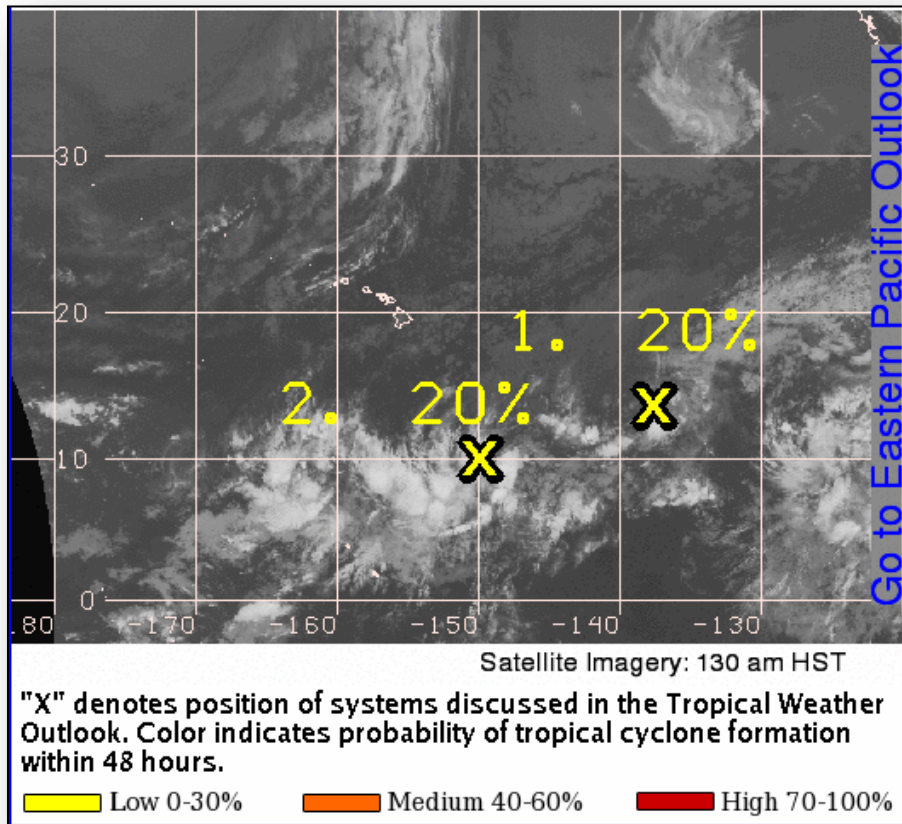
Eastern Pacific – Disturbance 2



Disturbance 2: (as of 8:00 am EDT)

- A broad area of low pressure about 1,400 miles SW of Cabo San Lucas Mexico is producing extensive cloudiness and showers
- Environmental conditions are conducive for gradual development, and a tropical depression is likely early next week
- Moving WNW at about 15 mph
- Formation chance (48-Hours): Medium – 50%
- Formation chance (5-Days): High – 90%

Central Pacific - Tropical Outlook



Disturbance 1: (as of 8:00 am. EDT)

- Showers and thunderstorms associated with an area of low pressure are located about 1200 miles east-southeast of Hilo, Hawaii
- conditions are expected to become less conducive for development by the end of the weekend
- Slow progression to WNW; while some development will remain possible over the next day or so
- Formation chance (48 hours): Low - 20%

Disturbance 2: (as of 8:00 am. EDT)

- Showers and thunderstorms associated with an area of low pressure are located around 850 miles south-southeast of Hilo, Hawaii
- Environmental conditions will support some gradual development over the next couple of days
- Slow progression to NW
- Formation chance (48 hours): Low - 20%

Disaster Requests & Declarations

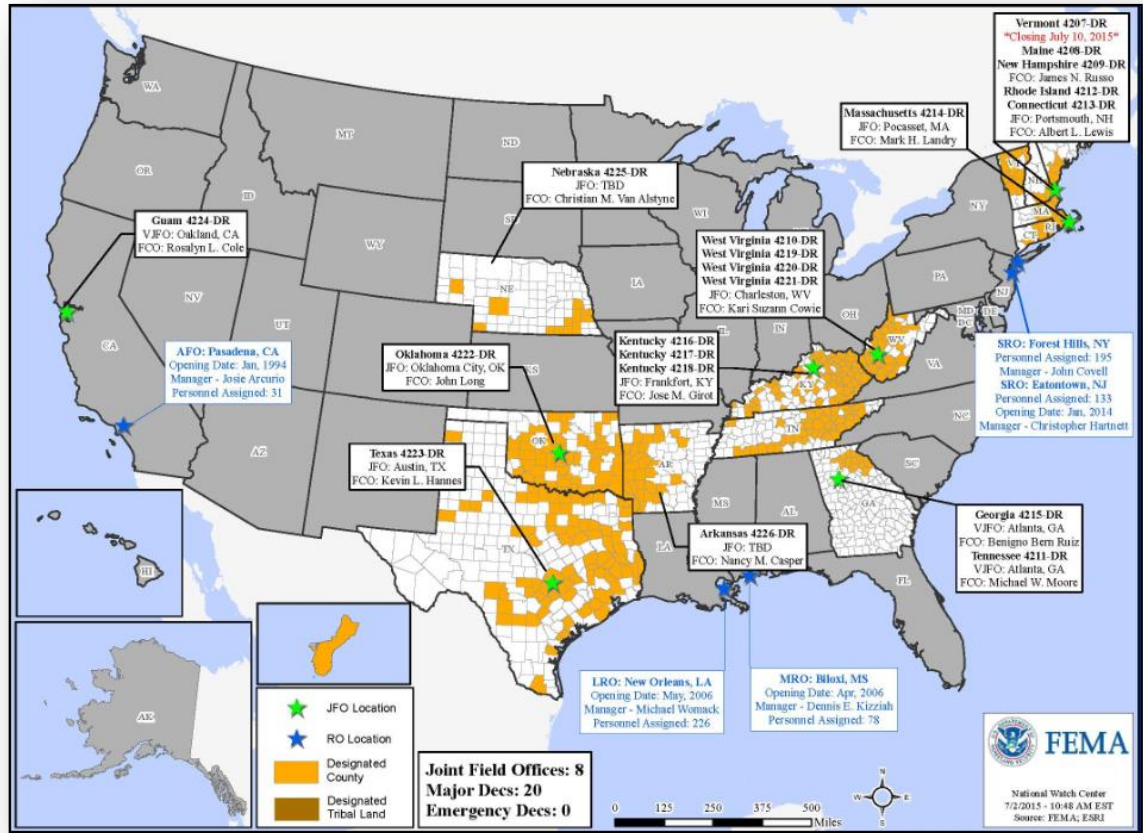


Declaration Requests in Process		Requests APPROVED (since last report)	Requests DENIED (since last report)
3	Date Requested	0	0
IA – DR Avian Influenza Outbreak	June 17, 2015		
WY – DR Severe Storms and Flooding	June 19, 2015		
KS – DR Severe Storms, Tornadoes, and Flooding	July 1, 2015		

Open Field Offices as of July 4



FEMA

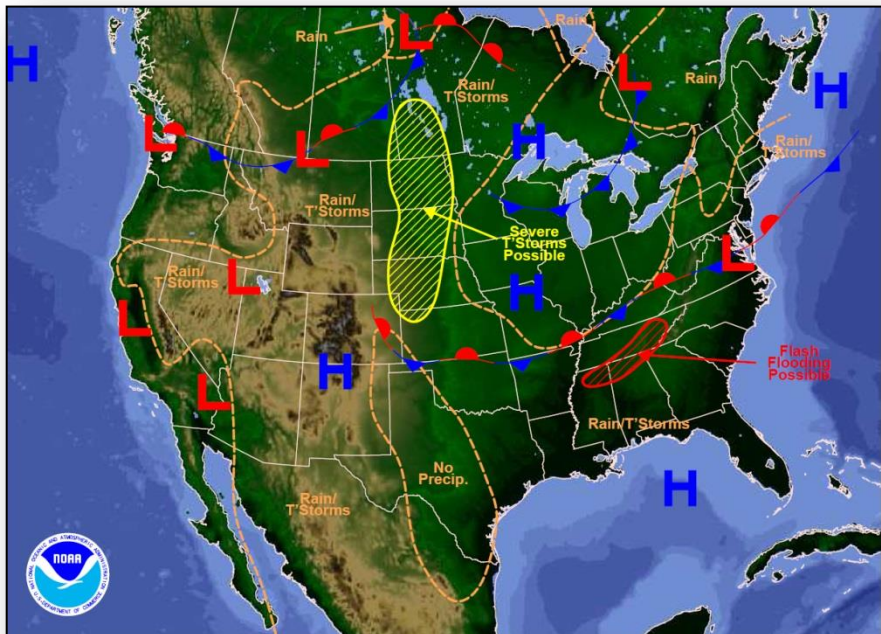


Joint Preliminary Damage Assessments



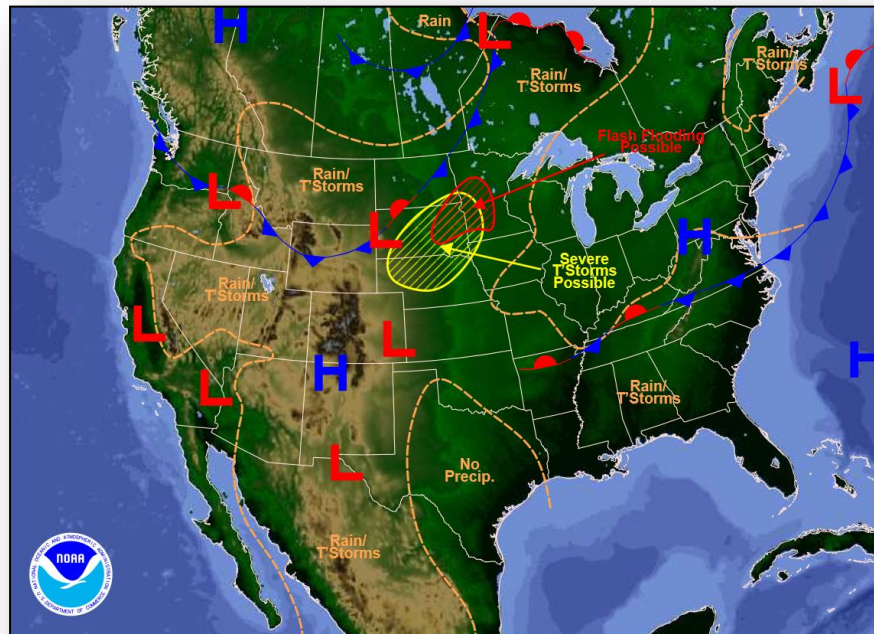
Region	State / Location	Event	IA/PA	Number of Counties		Start – End
				Requested	Complete	
I	VT	Flooding June 9	PA	3	0	6/30 – TBD
VI	LA	Red River Flooding May 18 and continuing	IA	2	2	6/24 – 6/26
			PA	6	5	6/24 – TBD
	TX	Severe Storms, Tornadoes & Flooding May 5, 2015 and continuing	IA	41	39	5/29 – TBD
			PA	92	73	5/29 – TBD
	OK	Severe Storms Tornadoes, Straight-Line Winds and Flooding	IA	35	35	5/26 – 6/26
			PA	63	61	6/26 – TBD
VII	MO	Severe Storms, Straight-line Winds & Flooding May 15 and continuing	PA	21	3	6/29 – TBD
X	AK	Sockeye Fire June 15 and continuing	IA	1	1	6/25 – 6/26
			PA	1	0	6/30 – TBD
		Card Street Fire June 15 and continuing	IA	1	0	6/30 – TBD
			PA	1	0	7/6 – TBD

National Weather Forecast



Weather Forecast for Sat, Jul 04, 2015, issued 4:17 AM EDT
DC/NOAA/NWS/NCEP/Weather Prediction Center
Prepared by Kong based on WPC, SPC and NHC forecasts

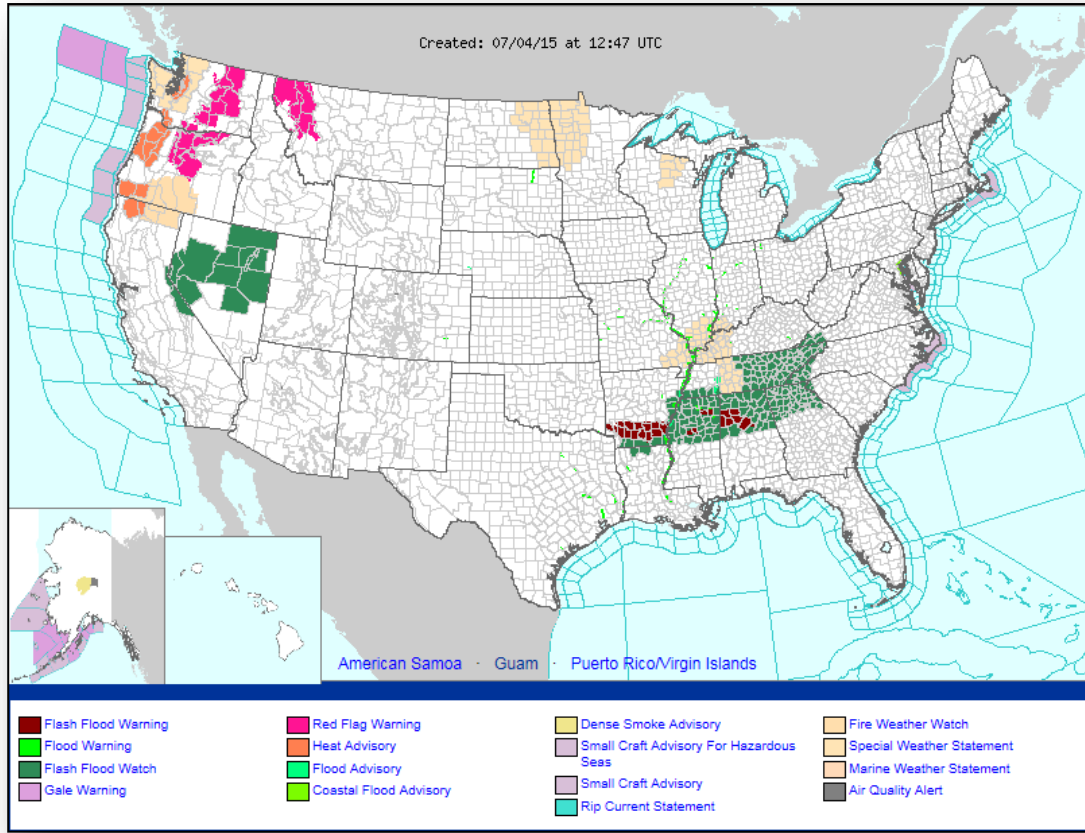
Today



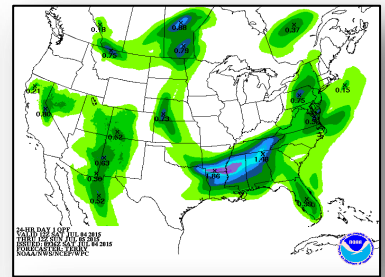
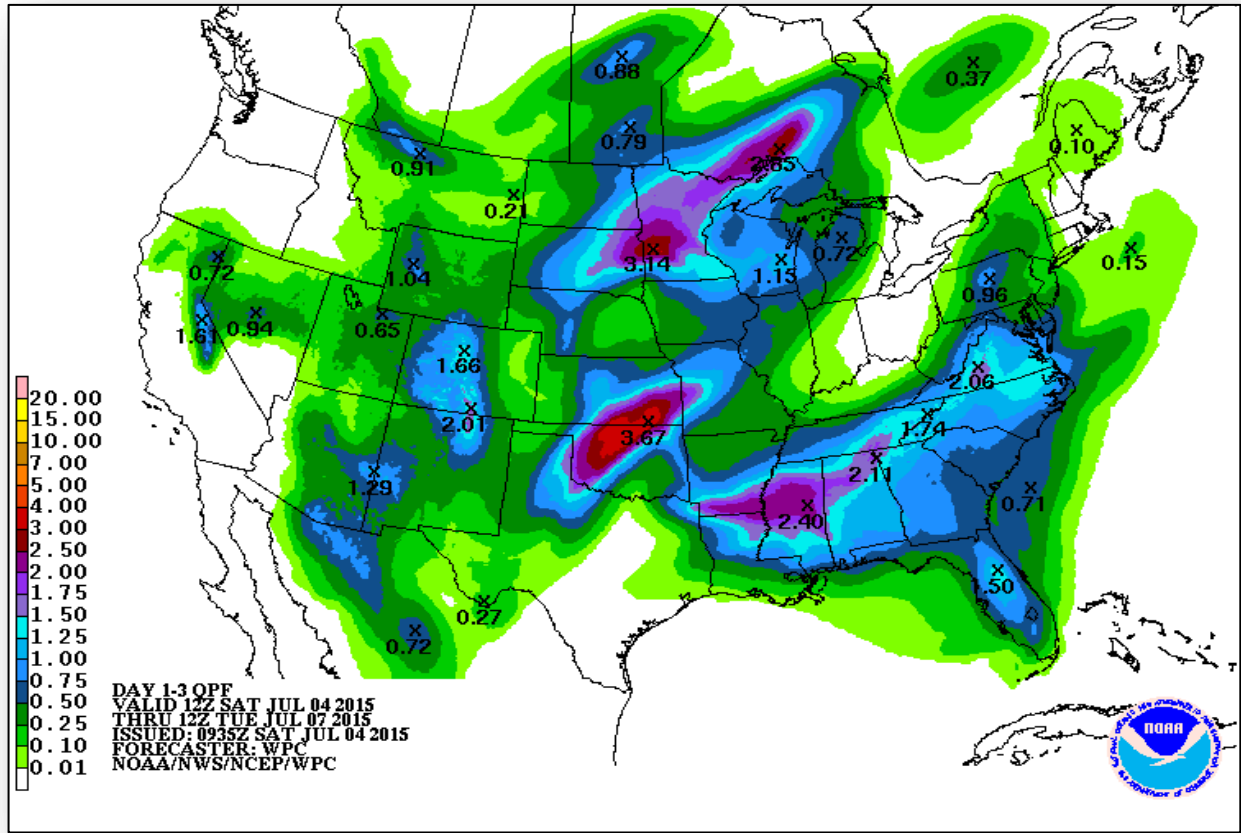
Weather Forecast for Sun, Jul 05, 2015, issued 4:33 AM EDT Sat, Jul 04, 2015
DC/NOAA/NWS/NCEP/Weather Prediction Center
Prepared by Kong based on WPC, SPC and NHC forecasts

Tomorrow

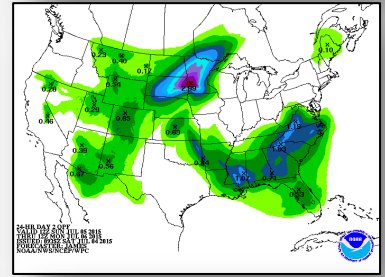
Active Watches/Warnings



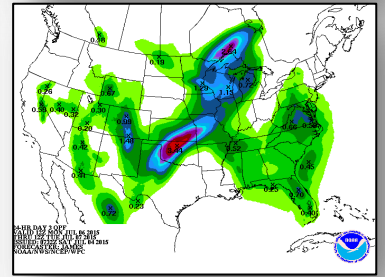
Precipitation Forecast, 1-3 Day



Day 1



Day 2

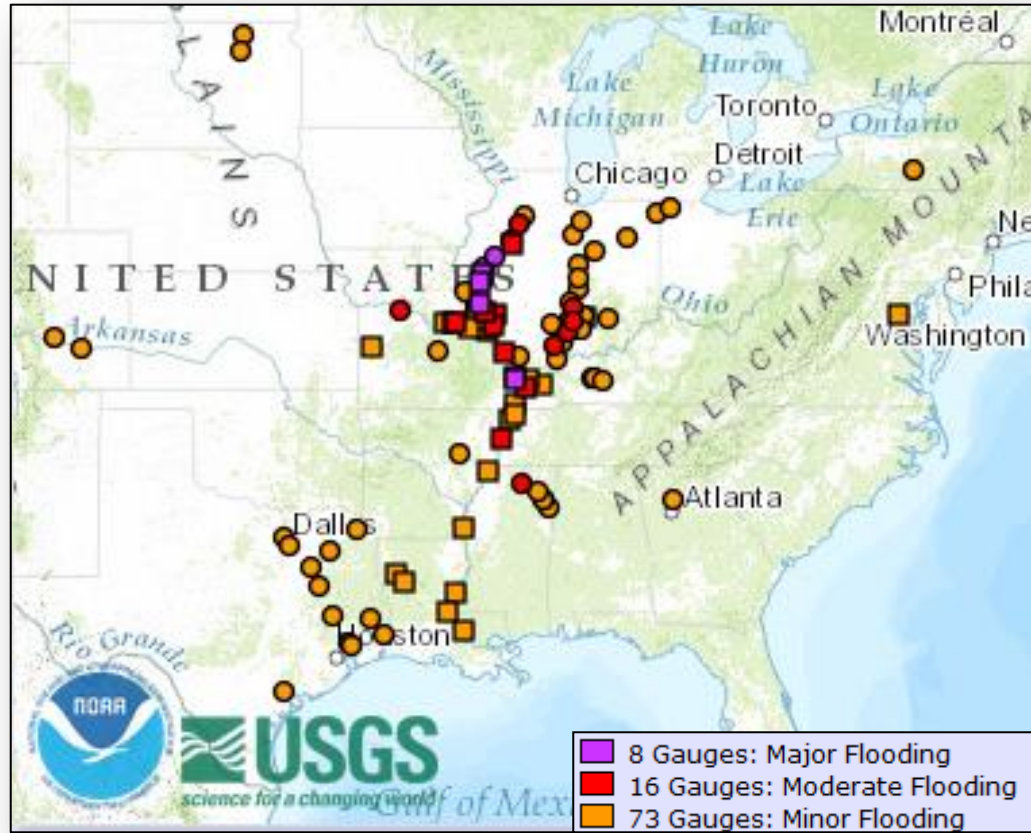


Day 3

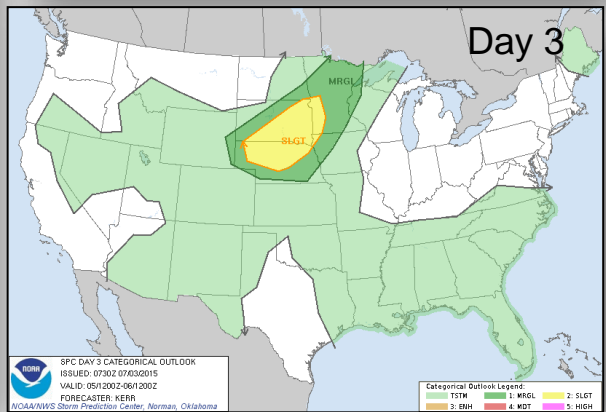
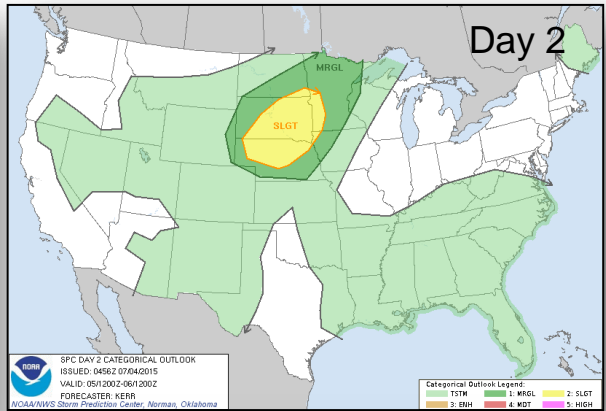
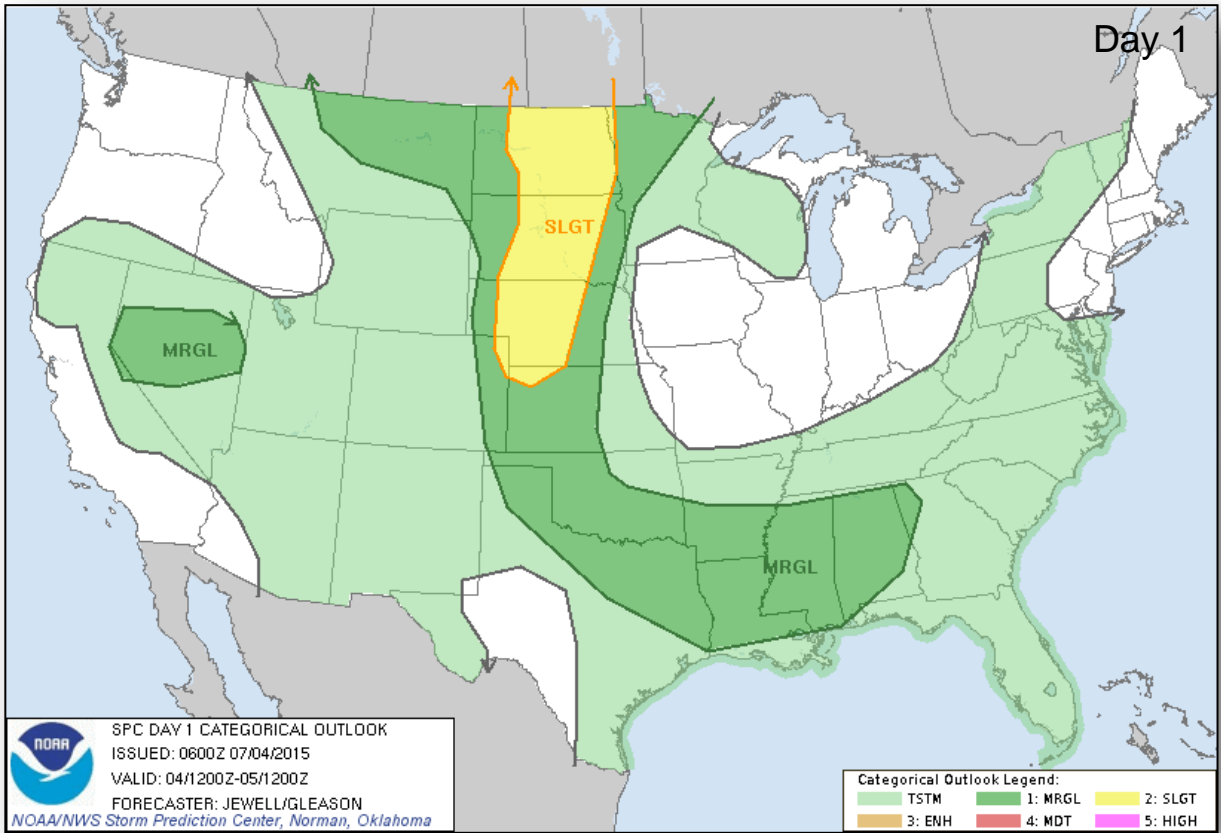
River Forecast



FEMA



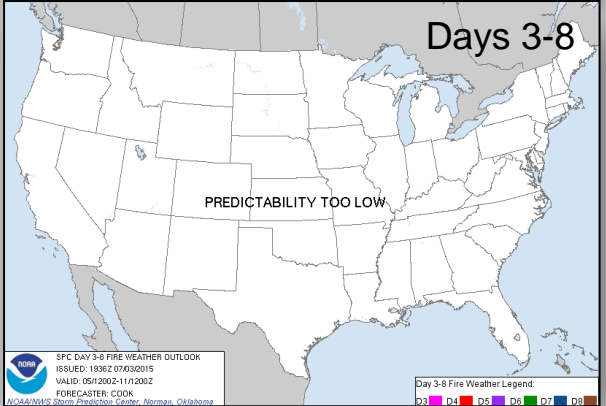
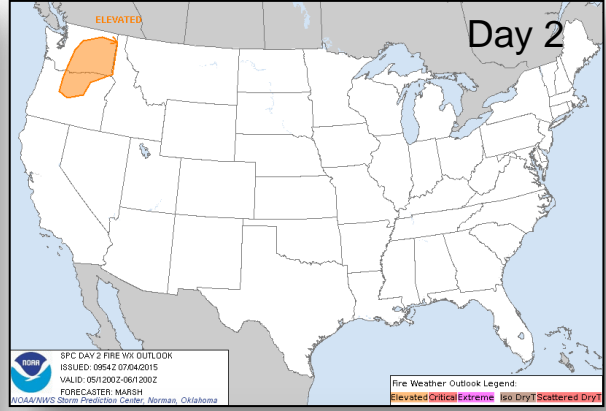
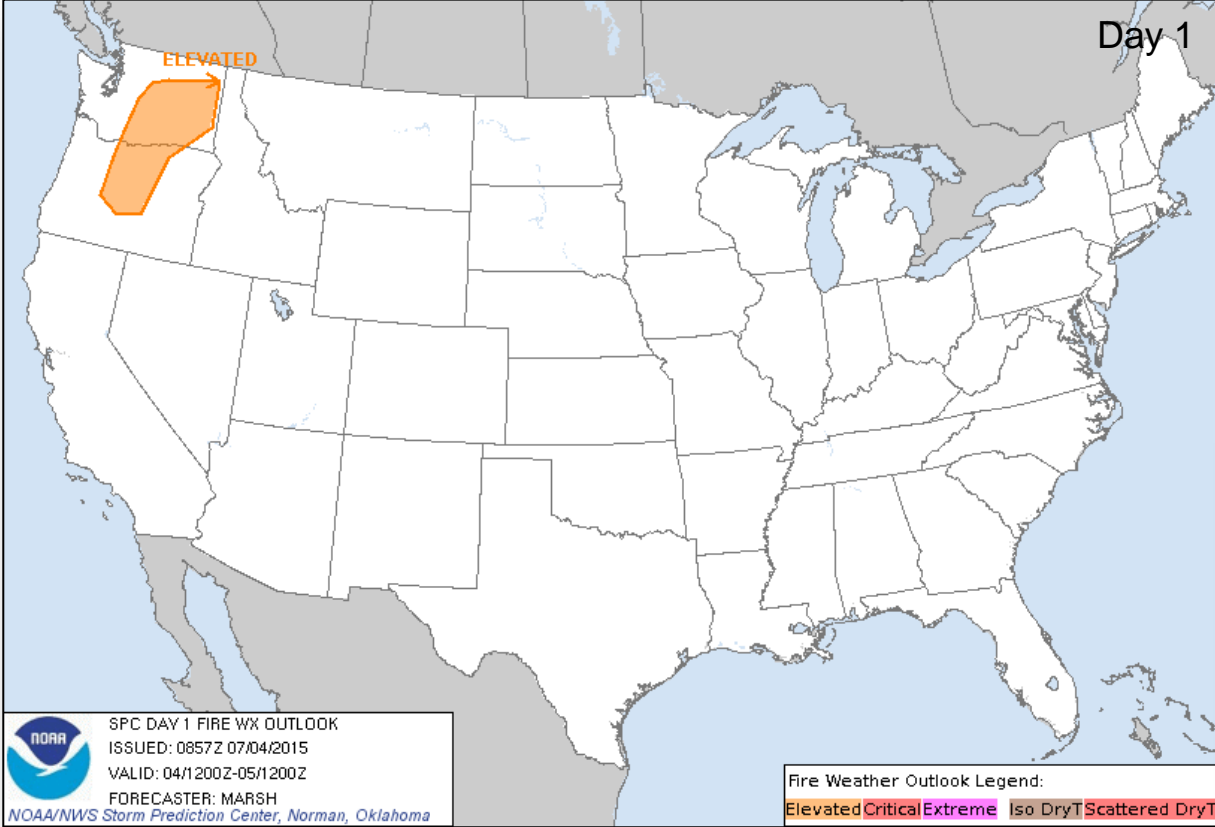
Severe Weather Outlook, Days 1-3



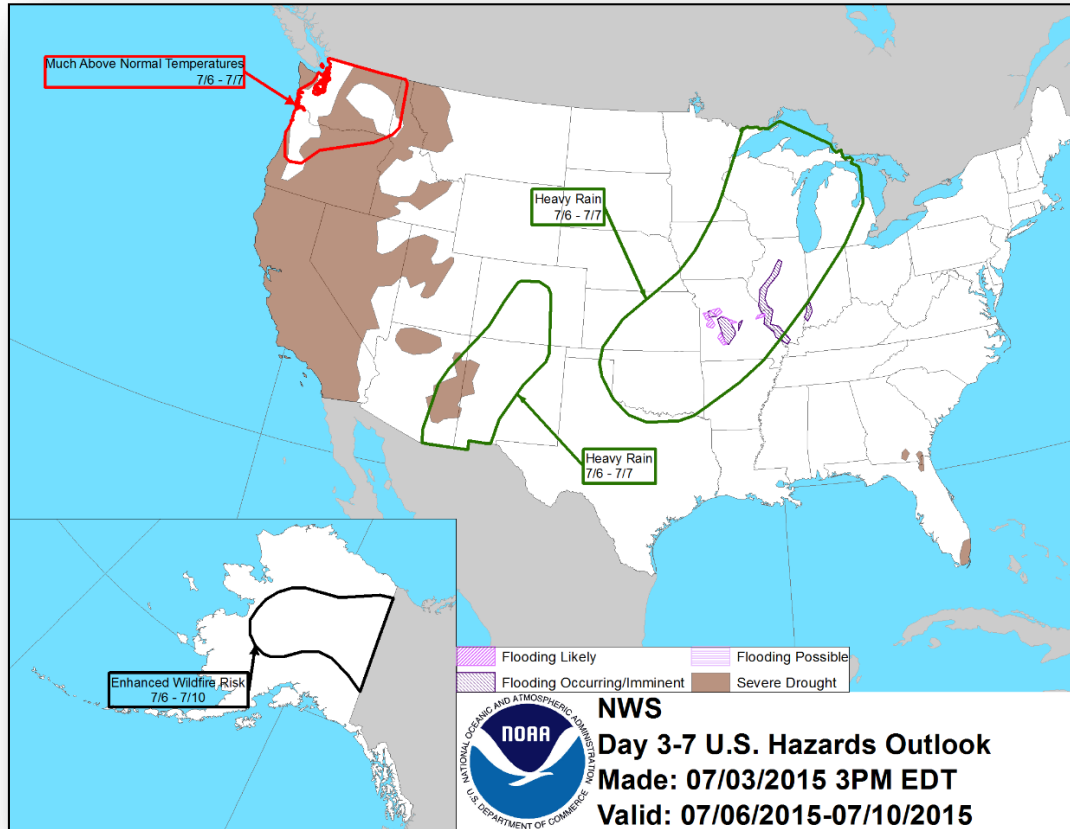
Categories

- Thunderstorms
- Marginal Risk
- Slight Risk
- Enhanced Risk
- Moderate Risk
- High Risk

Fire Weather Outlook, Days 1-8



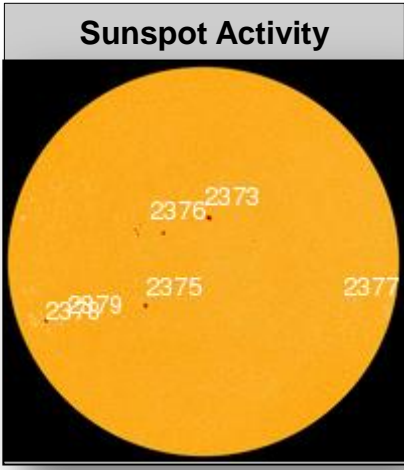
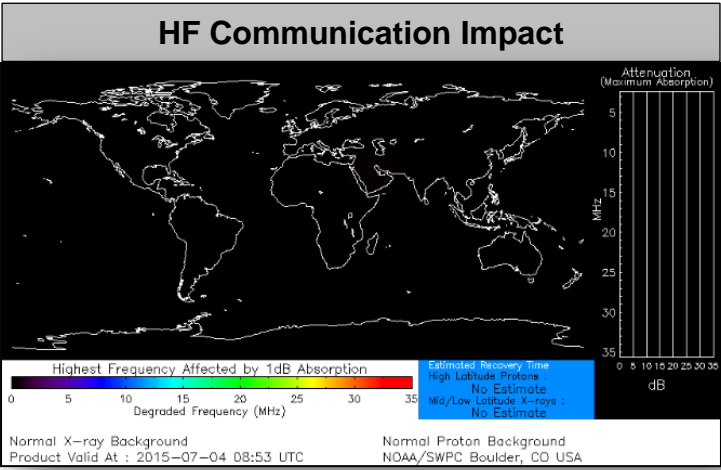
Hazard Outlook, July 6-10



Space Weather



None	Past 24 Hours	Current	Next 24 Hours
Space Weather Activity:	Minor	None	Minor
• Geomagnetic Storms	None	None	G1
• Solar Radiation Storms	None	None	None
• Radio Blackouts	R1	None	None



FEMA Readiness – Deployable Teams /Assets



Deployable Teams/Assets									
Resource	Status	Total	FMC Available		Partially Available	Not Available	Detailed, Deployed, Activated	Comments	Rating Criterion
FCO		35	11	31%	0	1	23		OFDC Readiness: FCO Green Yellow Red Type 1 3+ 2 1 Type 2 4+ 3 2 Type 3 4 3 2 FDRC 3 2 1
FDRC		9	7	78%	0	0	2		
US&R		28	27	96%	0	1	0	NM-TF1 (Red) – Personnel shortages	<ul style="list-style-type: none"> • Green = Available/FMC • Yellow = Available/PMC • Red = Out-of-Service • Blue = Assigned/Deployed
National IMAT		3	2	67%	0	0	1	Elements of IMAT East-2 deployed to TX	<ul style="list-style-type: none"> • Green: 3 avail • Yellow: 1-2 avail • Red: 0 avail (<i>Individual N-IMAT red if 50% of Section Chiefs and/or Team Leader is unavailable for deployment.</i>)
Regional IMAT		13	5	38%	1	3	4	Deployed (Blue): RII (Team A) to TX supporting FEMA-4223-DR-TX RV to RVI supporting severe weather/flooding RVI (Team 1) to TX & personnel to OK RIX (Team 2) deployed to Guam Partially Available (Yellow): RX IMAT returned from Alaska Not Mission Capable (Red): Personnel shortages/staff adjustments R1 (Team 1); RIV (Team 3); RVI (Team 2); RIX (Team 1)	<ul style="list-style-type: none"> • Green: 7 or more avail • Yellow: 4 - 6 teams available • Red: > 8 teams deployed/unavailable <i>R-IMAT also red if TL Ops/Log Chief is unavailable & has no qualified replacement</i>
MCOV		60	34	57%	0	6	20	16 units in TX 4 units in OK	<ul style="list-style-type: none"> • Green = 80 – 100% avail • Yellow = 60 – 79% avail • Red = 59% or below avail • Readiness remains 95%

FEMA Readiness – National/Regional Teams



National/Regional Teams									
Resource	Status	Total	FMC Available		Partially Available	Not Available	Status	Comments	Rating Criterion
NWC		5	5	100%	0	0	Activated	Enhanced Watch 24/7	<ul style="list-style-type: none"> • Green = FMC • Yellow = PMC • Red = NMC
NRCC		2	344	89%	0	44	Not Activated		
HLT		1	N/A	N/A	0	0	Activated		
DEST							Not Activated		
RRCCs		10	10	100%	0	0	Activated	Region IX Level II (1100 a.m. – 1100 p.m. EDT)	
RWCs/MOCs		10	10	100%	0	0	Activated	Region IX RWC is at Enhanced Watch	



FEMA

FEMA's mission is to support our citizens and first responders to ensure that as a nation we work together to build, sustain, and improve our capability to prepare for, protect against, respond to, recover from, and mitigate all hazards.