

The Disaster Center is dedicated to the idea that disaster mitigation is cost effective and individuals pursuing their own interest are the greatest potential force for disaster reduction.

Please consider making a small donation to the Disaster Center



When disaster mitigation is cost effective, we are on the road to bringing disasters to an end.



FEMA

Daily Operations Briefing

Sunday, July 5, 2015

8:30 a.m. EDT

Significant Activity: July 5 – 6



Significant Events: Tropical Storm (TS) Chan-Hom (09W)

Tropical Activity:

- Atlantic: Tropical cyclone activity not expected next 48 hours
- Eastern Pacific: Disturbance 2 (Medium 60%)
- Central Pacific: Disturbance 1 (Low 10%) ; Disturbance 2 (Low 20%); Disturbance 3 (Low 20%)
- Western Pacific: Tropical Storm Chan-Hom (9W); Tropical Storm Nangka (11W)

Significant Weather:

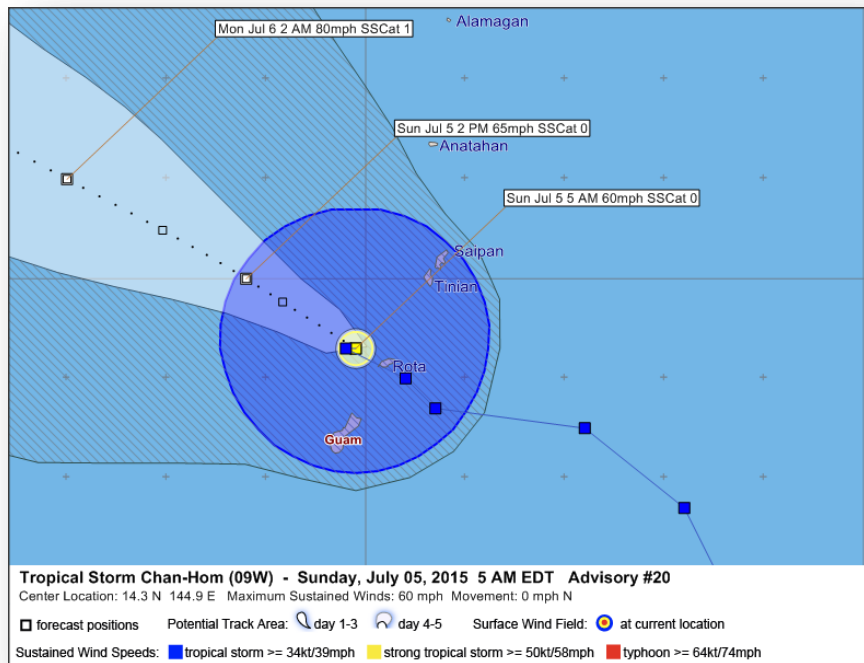
- Severe thunderstorms possible – Northern/Central Plains to the Upper/Middle Mississippi valleys
- Rain and thunderstorms – Northern California, Central Great Basin, Southwest, Northern/Central Rockies, Northern/Central/Southern Plains, Upper/Lower Mississippi valleys to Mid-Atlantic/Southeast
- Flash flooding possible – Northern Plains to the Upper Mississippi Valley
- Red Flag Warnings: CA, OR & WA
- Elevated Fire Weather: OR & WA; Isolated Dry Thunderstorms: CA/OR

Space Weather:

- Past 24 hours: Moderate (G2) geomagnetic storms occurred; Next 24 hours: Minor (G1) geomagnetic storms predicted

Declaration Activity: None

Tropical Storm Chan-Hom (09W)



As of 5:00 a.m. EDT

- Located 35 miles W of Tinian; moving NW at 14 mph
- Maximum sustained winds 60 mph, with higher gusts
- Tropical Storm Chan-Hom will continue to move NW with a decrease in forward speed
- Tropical storm-force winds extend outward up to 60-80 miles
- Forecast to slowly intensify as it moves away from Marianas
- Tropical Storm Warning in effect for Rota

Potential Impacts to Northern Mariana Islands:

- **Winds:** Tropical storm force winds will persist through late morning or early afternoon
- **Coastal Inundation:** 1 to 2 feet for Rota
- **Rainfall:** 7-12 inches of rain already reported at Guam and Rota, with an additional 1-3 inches possible, continuing flash flood threat through early Monday

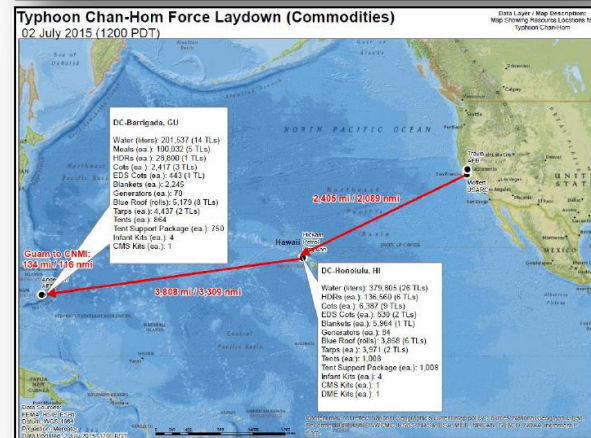


- No significant impacts, at this time
- ▲ Airports are closed in Rota & Tinian; Saipan & Guam airports open
- ▲ Seaport on Guam open; other seaports require USCG inspection prior to opening
- ▲ No significant power outage numbers were reported

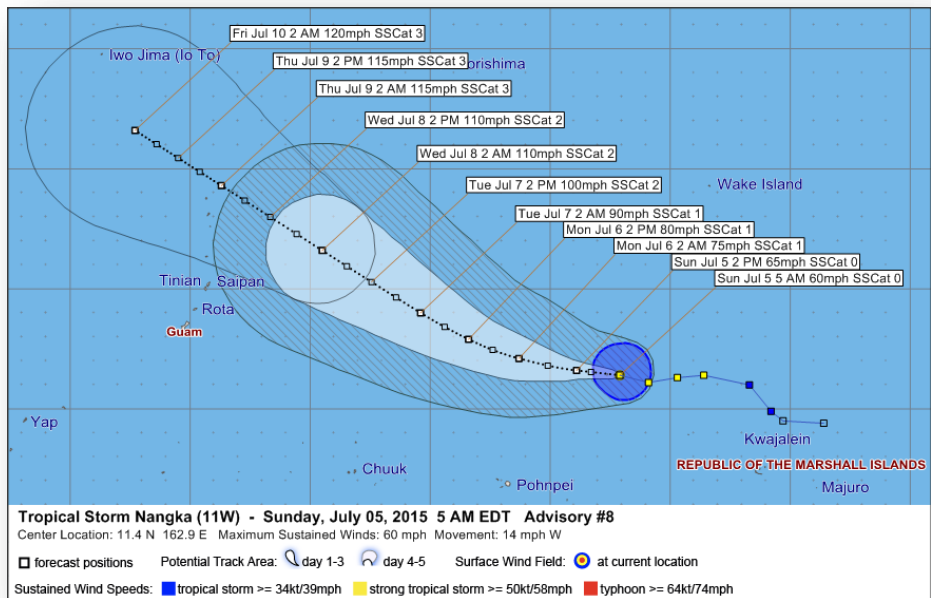
- ▲ Guam and CNMI EOCs have returned to Normal Operations
- ▲ All shelters are closed
- No shortfalls reported

- RWC – Enhanced Watch (24/7)
- RRCC – Level II (day shift only, 11:00 am – 11:00 pm EDT) with ESFs 3, 7, 8, DCO/DCE, & Hurricane Liaison
- Regional IMAT deployed to Guam w/MERS, ESF-3, 8, 12, DCO/DCE & USCG LNO
- Two FEMA LNOs deployed to Saipan
- Mission assignments have been issued to GSA, HHS, USACE and DOE for activations

- National Watch Center (NWC) remains at Enhanced Watch, 24/7
- Logistics FSA/ISB Team Charlie, and LNO to PACOM in Hawaii



Western Pacific – TS Nangka (11W)



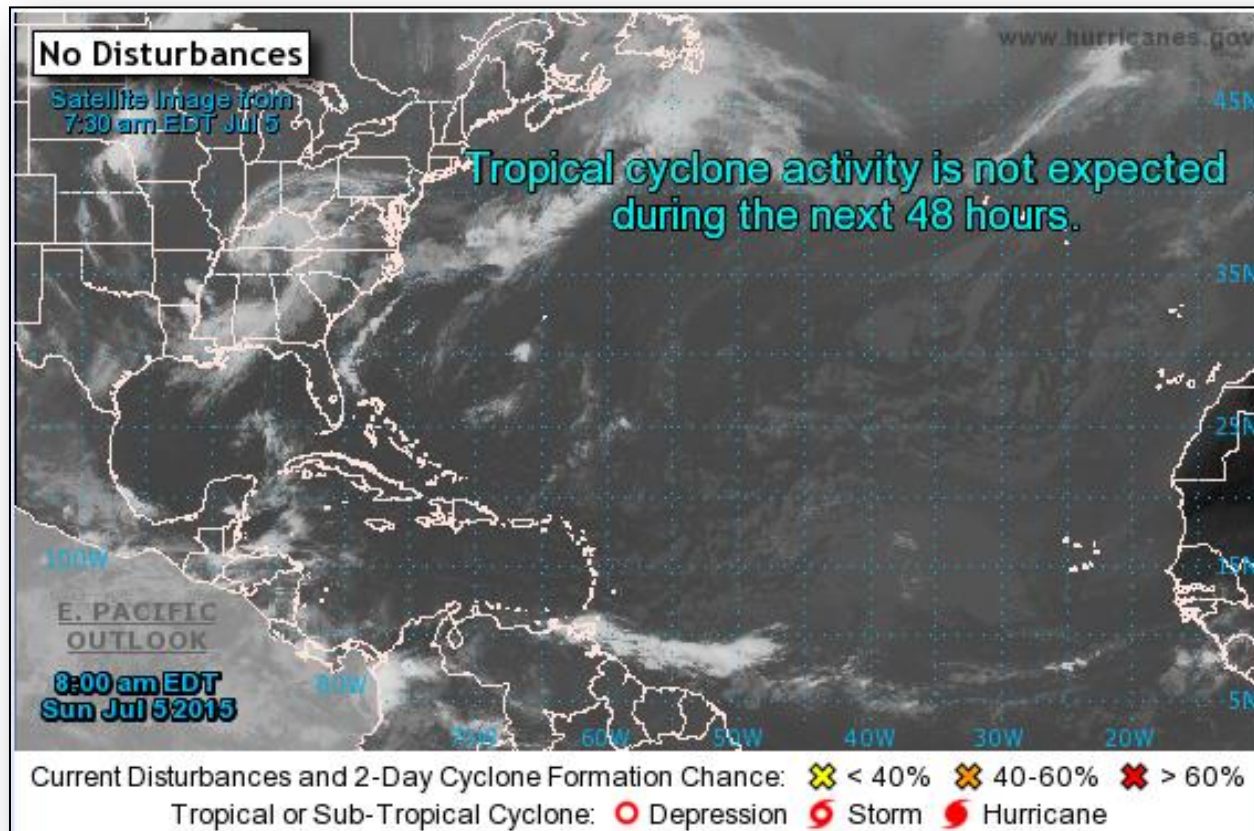
As of 5:00 a.m. EDT

- Located 1,230 miles E of Guam; moving W at 14 mph
- Maximum sustained winds 60 mph, with higher gusts
- Tropical Storm Nangka is expected to continue moving W through this afternoon, then make a slight turn to the W/NW on Monday with little change in forward speed
- Forecast to resume a slow intensification through this afternoon, and possibly become a typhoon early Monday
- No watches or warnings in effect for U.S. territories, but forecast to approach the northern portions of the Marianas by mid-week

2-Day Tropical Outlook – Atlantic



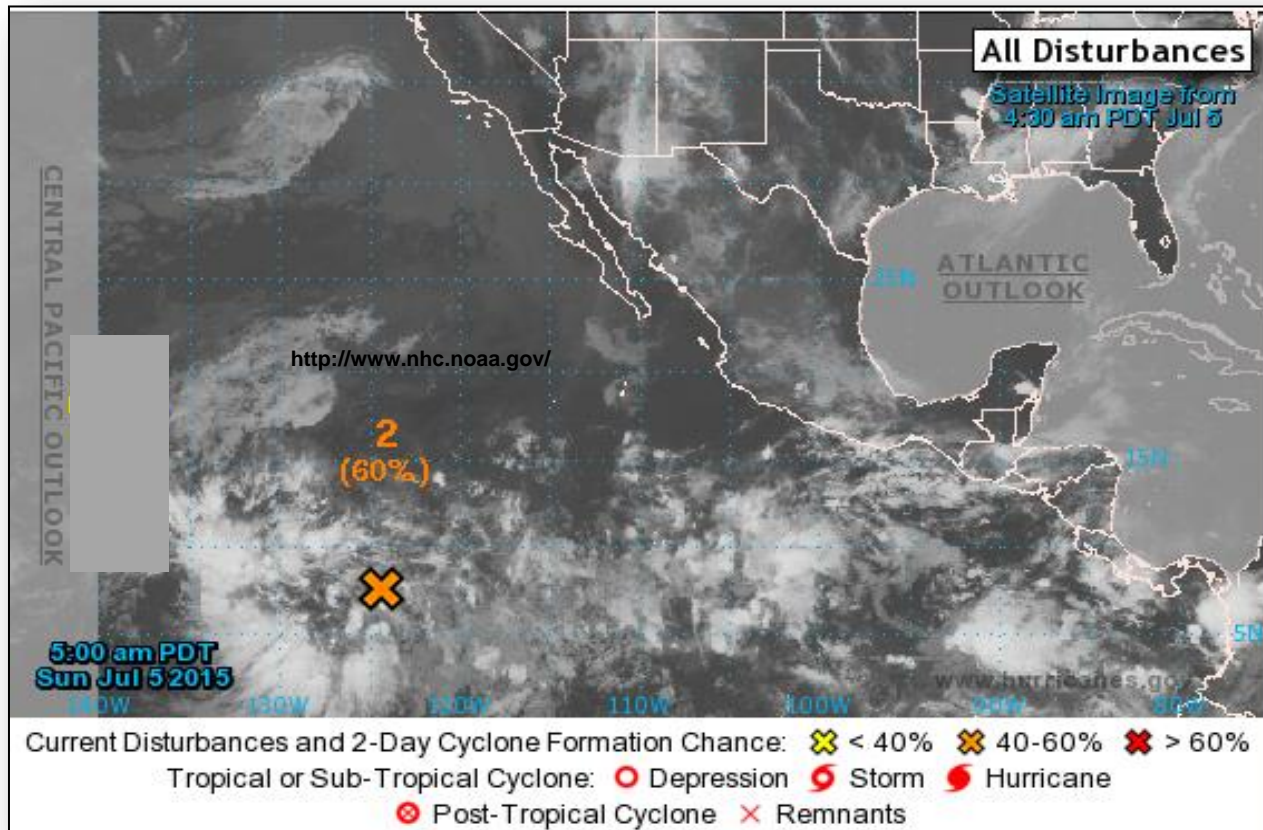
FEMA



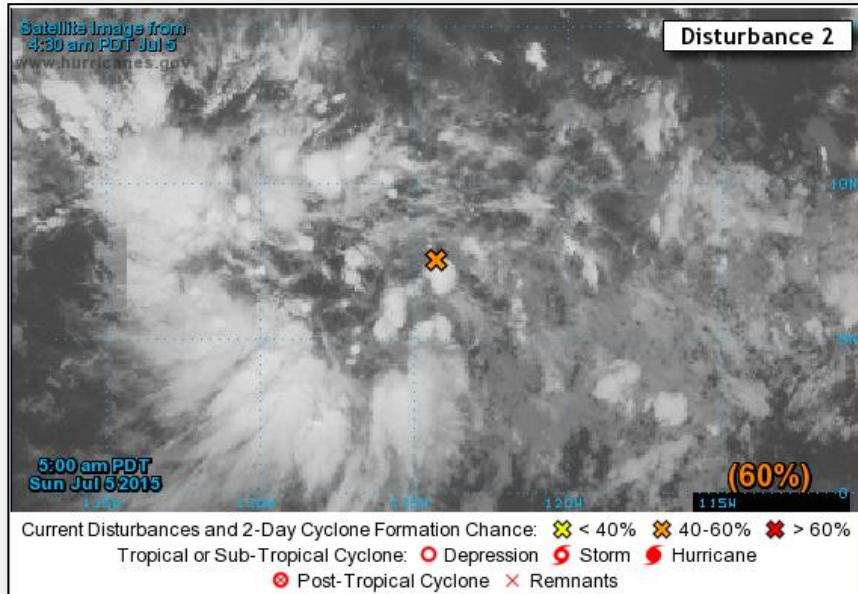
2-Day Tropical Outlook – Eastern Pacific



FEMA



Eastern Pacific – Disturbance 2



Disturbance 2: (as of 8:00 a.m. EDT)

- A broad area of low pressure about 1,450 miles SW of Cabo San Lucas, Mexico have changed little in organization
- Environmental conditions are conducive for gradual development & a tropical depression is likely early next week
- Moving WNW at about 10-15 mph
- Formation chance (48-Hours): Medium – 60%
- Formation chance (5-Days): High – 90%

Central Pacific - Tropical Outlook

Disturbance 1: (as of 8:00 a.m. EDT)

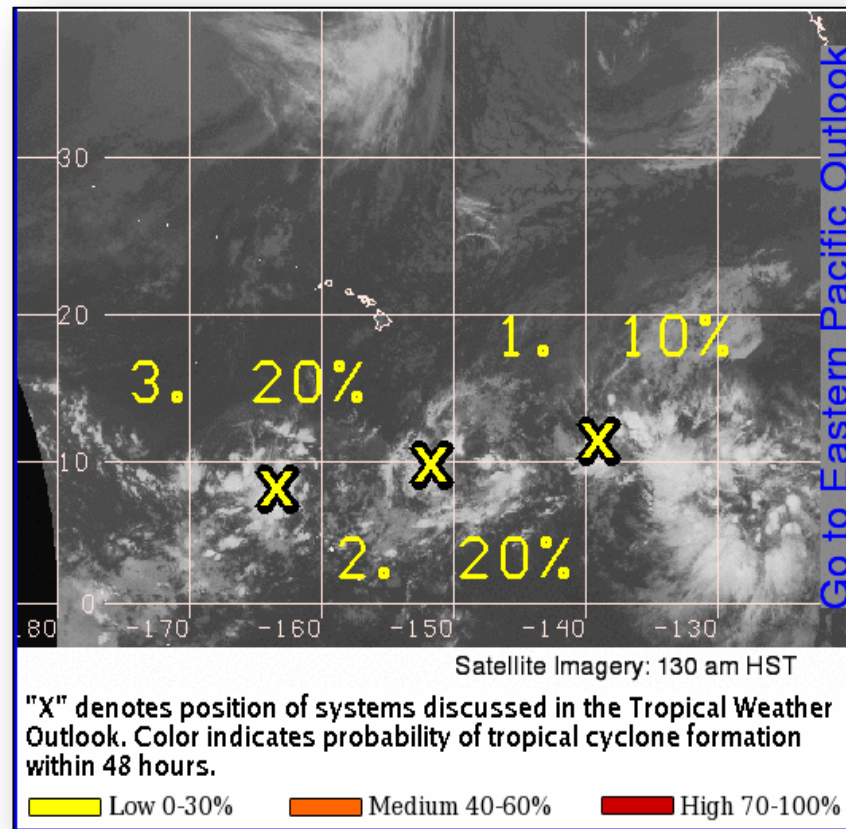
- A weak low pressure area located about 1130 miles ESE of Hilo, Hawaii
- Poorly organized; Upper level winds remain unfavorable for development slowly moving west
- Formation chance (48 hours): Low - 10%

Disturbance 2: (as of 8:00 a.m. EDT)

- An area of disturbed weather, associated with a weak low pressure area 780 miles SSE of Hilo, Hawaii
- Environmental conditions support some gradual development while it remains nearly stationary
- Formation chance (48 hours): Low - 20%

Disturbance 3: (as of 8:00 a.m. EDT)

- Isolated thunderstorms form around a weak low pressure about 970 miles SW of Honolulu, Hawaii
- Conditions will not be conducive for development through Monday afternoon
- Formation chance (48 hours): Low – 20%

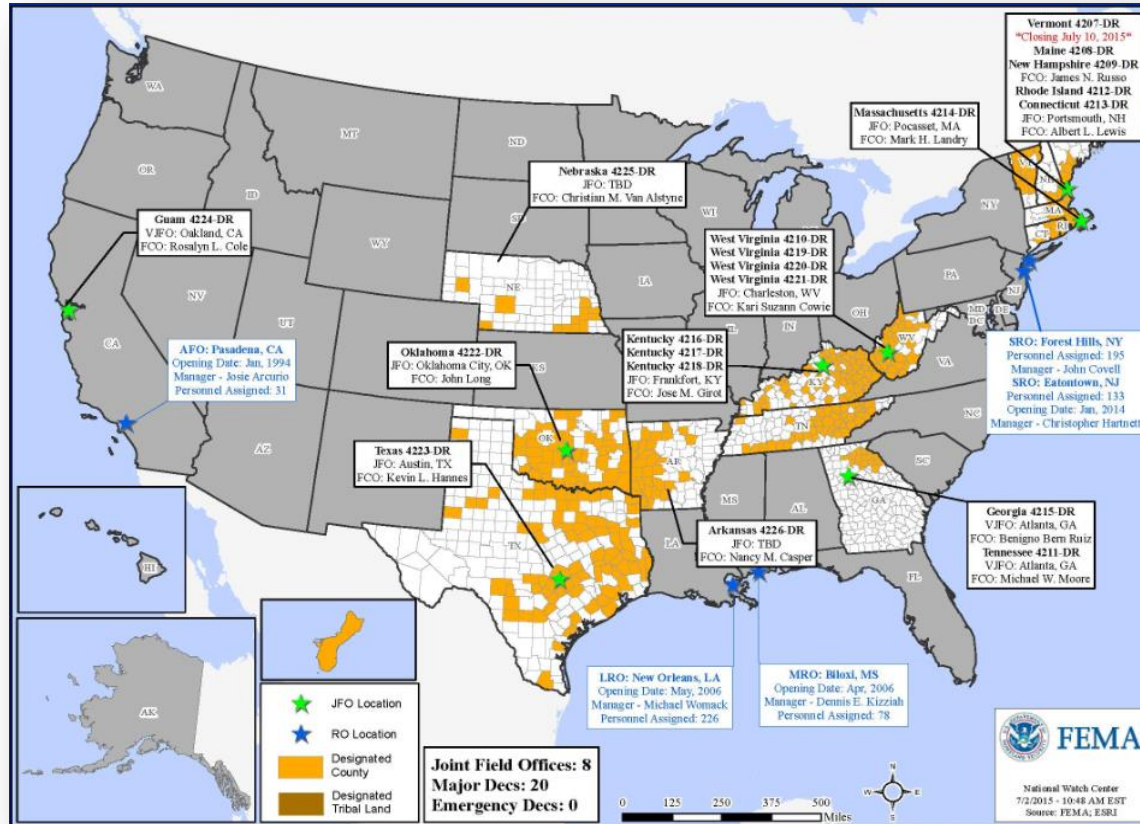


Disaster Requests & Declarations



Declaration Requests in Process		Requests APPROVED (since last report)	Requests DENIED (since last report)
3	Date Requested	0	0
IA – DR Avian Influenza Outbreak	June 17, 2015		
WY – DR Severe Storms and Flooding	June 19, 2015		
KS – DR Severe Storms, Tornadoes, and Flooding	July 1, 2015		

Open Field Offices as of July 5

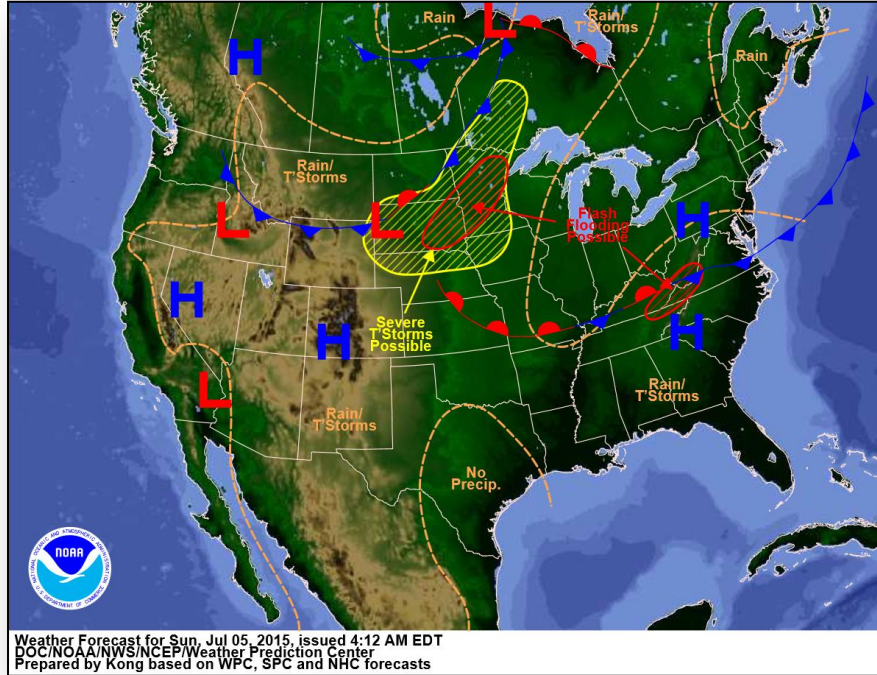


Joint Preliminary Damage Assessments

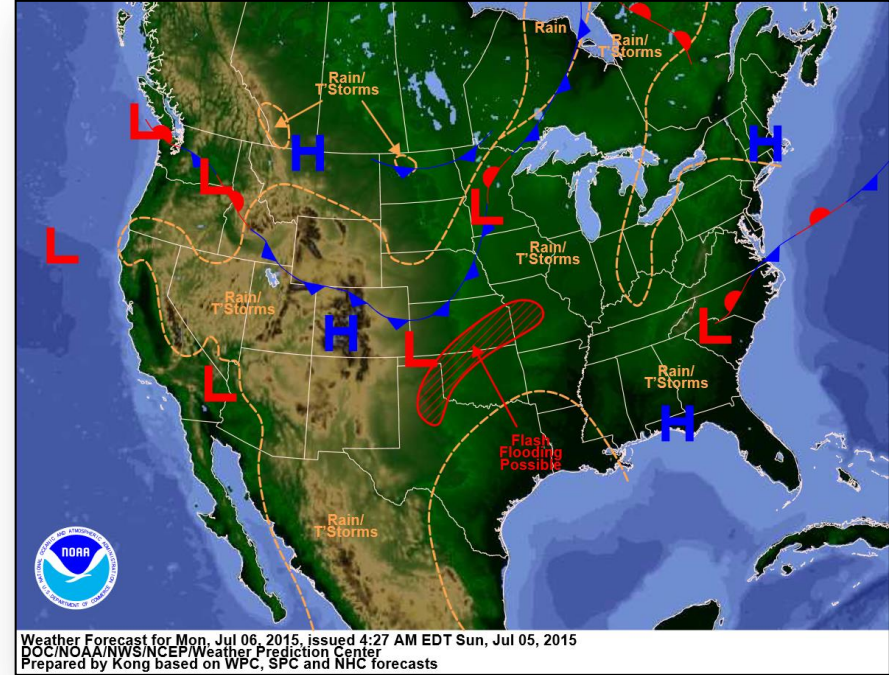


Region	State / Location	Event	IA/PA	Number of Counties		Start – End
				Requested	Complete	
I	VT	Flooding June 9	PA	3	0	6/26 – TBD
VI	LA	Red River Flooding May 18 and continuing	IA	2	2	6/24 – 6/26
			PA	6	5	6/24 – TBD
	TX	Severe Storms, Tornadoes & Flooding May 5, 2015 and continuing	IA	44 (+3)	39	5/29 – TBD
			PA	92	73	5/29 – TBD
	OK	Severe Storms Tornadoes, Straight-Line Winds and Flooding	IA	35	35	5/26 – 6/26
			PA	63	61	6/26 – TBD
VII	MO	Severe Storms, Straight-line Winds & Flooding May 15 and continuing	PA	44(+23)	4(+1)	6/29 – TBD
X	AK	Sockeye Fire June 15 and continuing	IA	1	1	6/25 – 6/26
			PA	1	1(+1)	6/30 – 7/2
		Card Street Fire June 15 and continuing	IA	1	1	6/30 – 7/2
			PA	1	0	7/6 – TBD

National Weather Forecast



Today

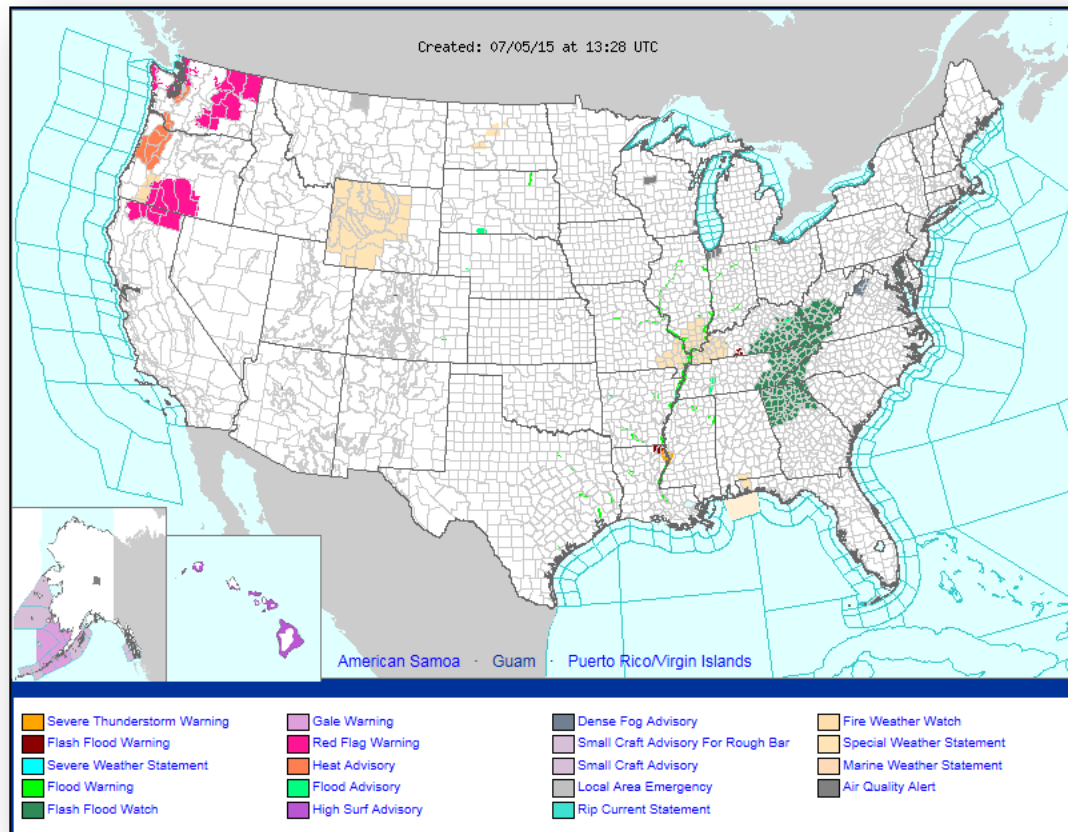


Tomorrow

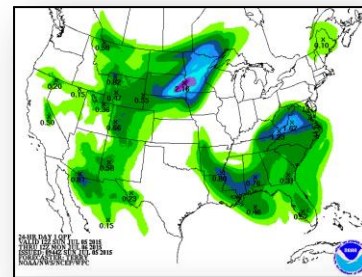
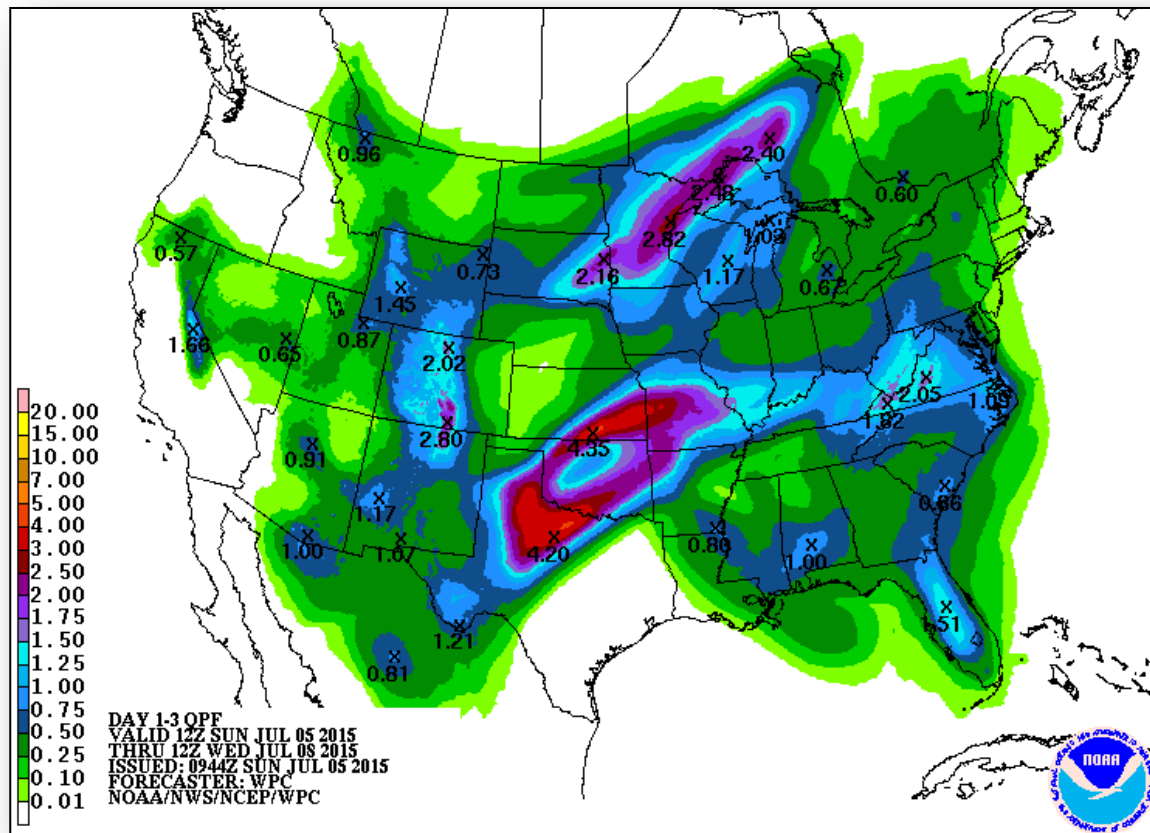
Active Watches/Warnings



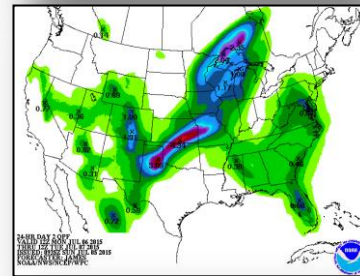
FEMA



Precipitation Forecast, 1-3 Day



Day 1



Day 2

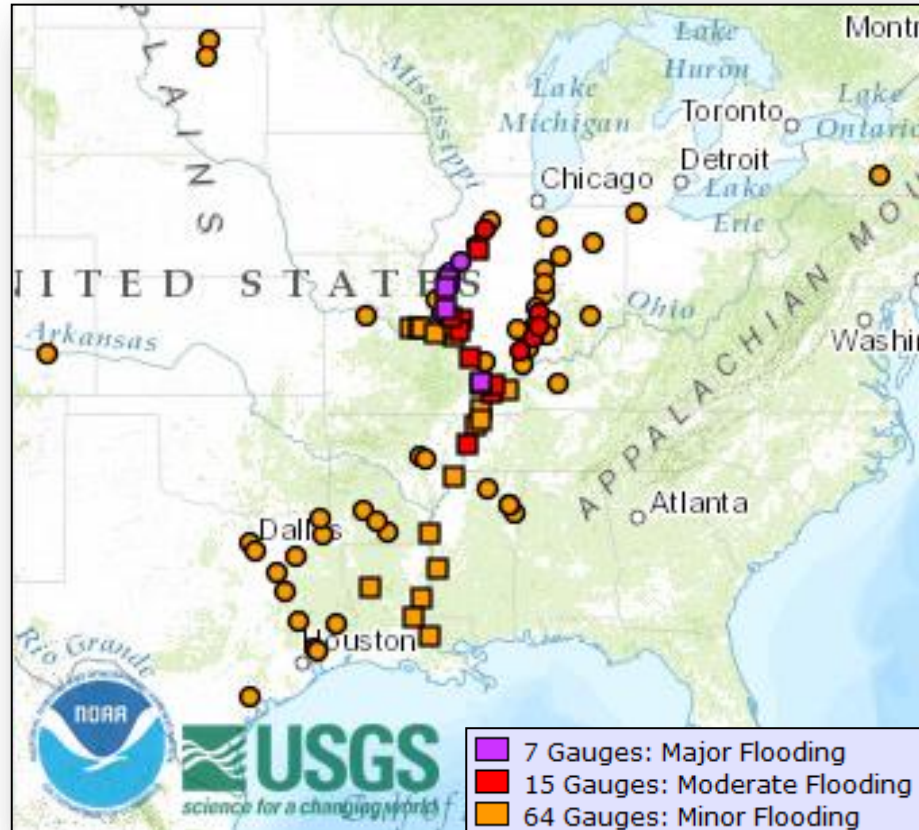


Day 3

River Forecast



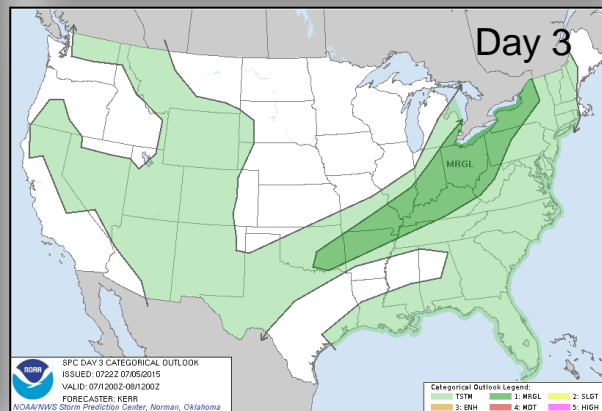
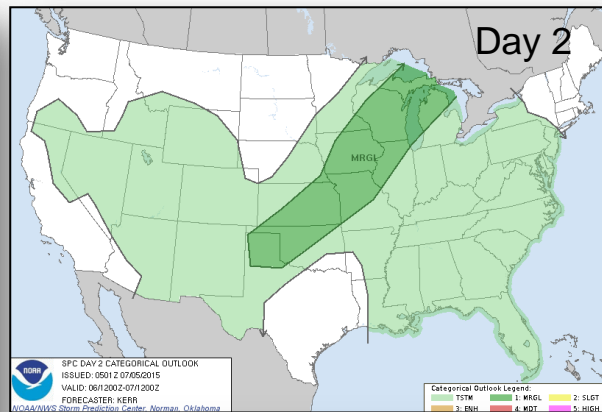
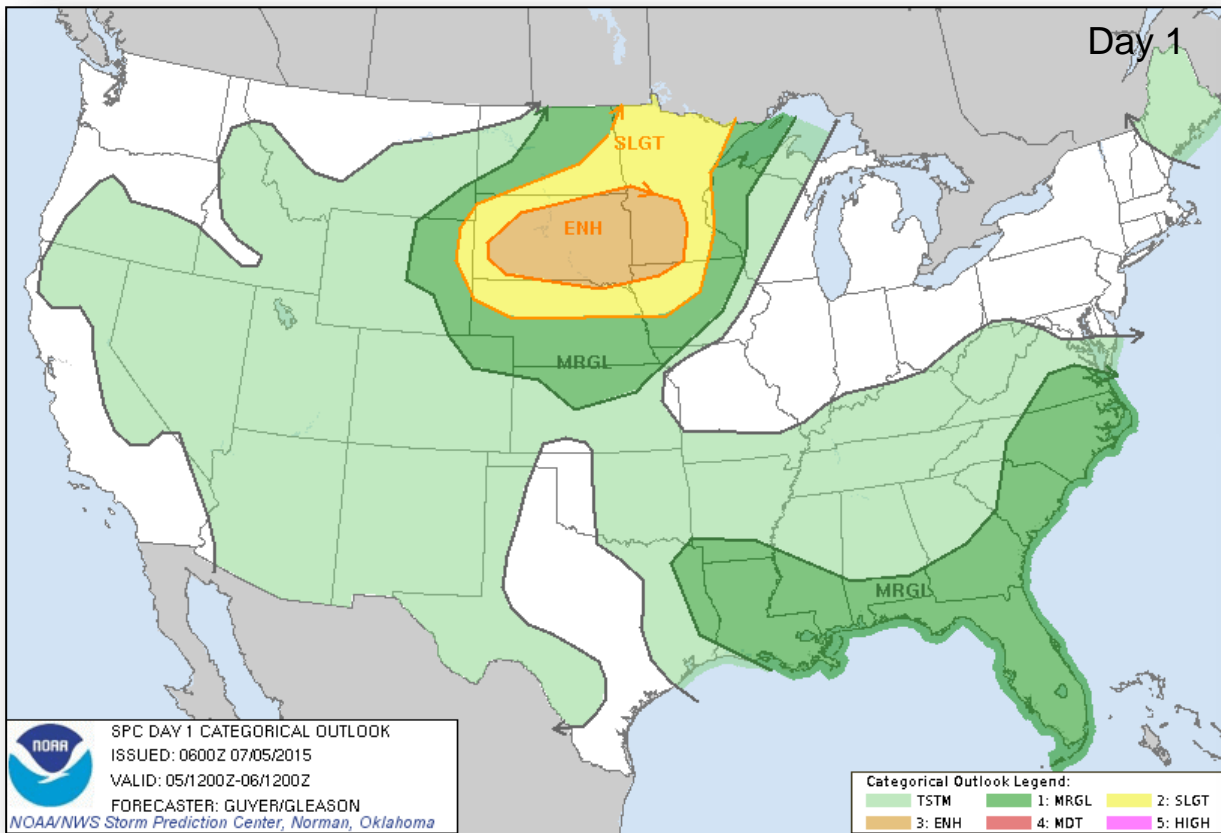
FEMA



Severe Weather Outlook, Days 1-3



FEMA



Categories

Thunderstorms

Marginal Risk

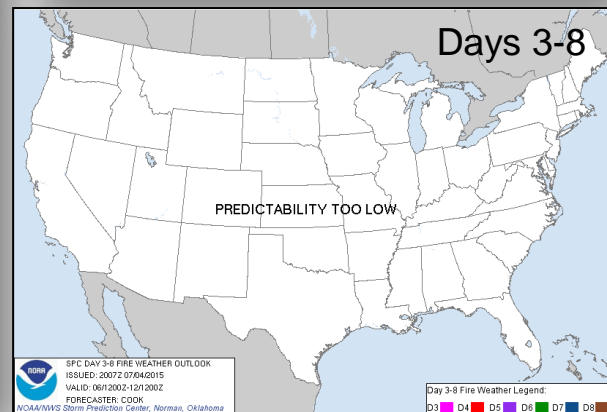
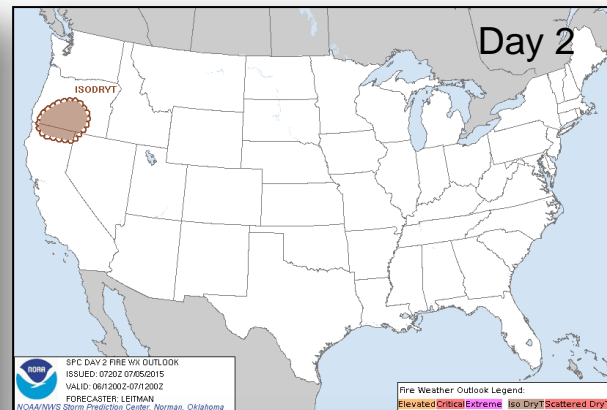
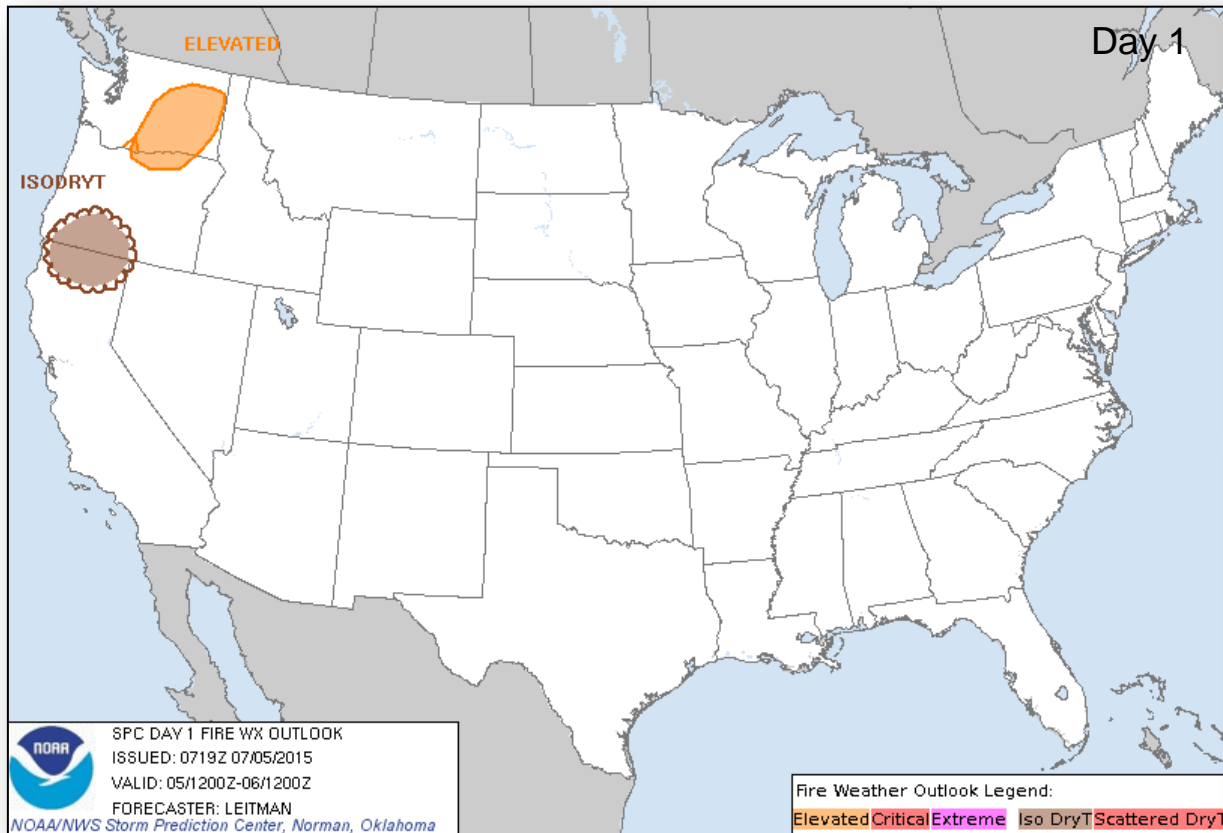
Slight Risk

Enhanced Risk

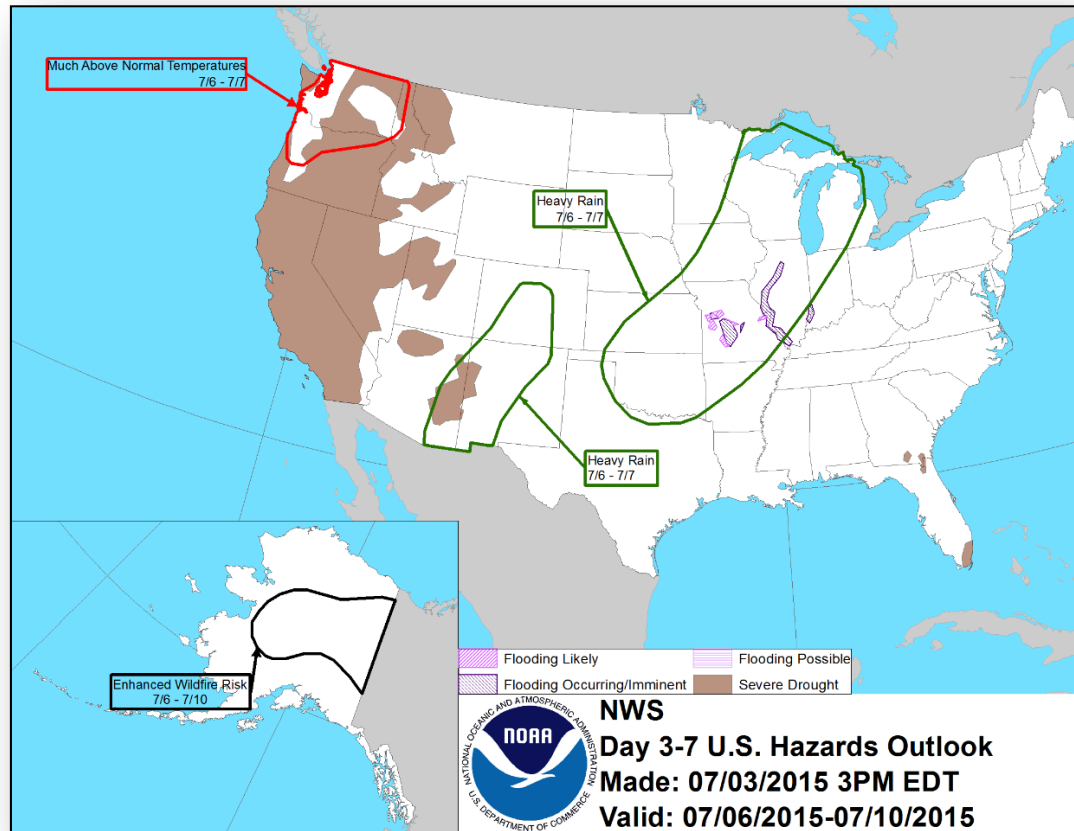
Moderate Risk

High Risk

Fire Weather Outlook, Days 1-8

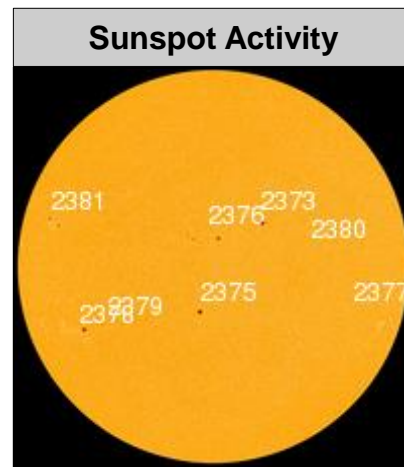
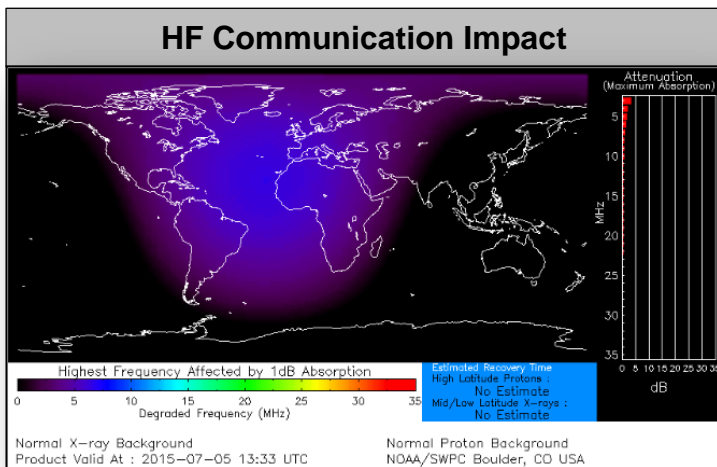


Hazard Outlook, July 6-10



Space Weather

None	Past 24 Hours	Current	Next 24 Hours
Space Weather Activity:	Moderate	None	None
• Geomagnetic Storms	G2	None	None
• Solar Radiation Storms	None	None	None
• Radio Blackouts	None	None	None



FEMA Readiness – Deployable Teams /Assets



Deployable Teams/Assets									
Resource	Status	Total	FMC Available		Partially Available	Not Available	Detailed, Deployed, Activated	Comments	Rating Criterion
FCO		35	11	31%	0	1	23		OFDC Readiness: FCO Green Yellow Red Type 1 3+ 2 1 Type 2 4+ 3 2 Type 3 4 3 2 FDRC 3 2 1
FDRC		9	7	78%	0	0	2		
US&R		28	27	96%	0	1	0	NM-TF1 (Red) – Personnel shortages	<ul style="list-style-type: none"> • Green = Available/FMC • Yellow = Available/PMC • Red = Out-of-Service • Blue = Assigned/Deployed
National IMAT		3	2	67%	0	0	1	Elements of IMAT East-2 deployed to TX	<ul style="list-style-type: none"> • Green: 3 avail • Yellow: 1-2 avail • Red: 0 avail (<i>Individual N-IMAT red if 50% of Section Chiefs and/or Team Leader is unavailable for deployment.</i>)
Regional IMAT		13	5	38%	1	3	4	Deployed (Blue): RII (Team A) to TX supporting FEMA-4223-DR-TX RV to RVI supporting severe weather/flooding RVI (Team 1) to TX & personnel to OK RIX (Team 2) deployed to Guam Partially Available (Yellow): RX IMAT returned from Alaska Not Mission Capable (Red): <u>Personnel shortages/staff adjustments</u> R1 (Team 1); RIV (Team 3); RVI (Team 2); RIX (Team 1)	<ul style="list-style-type: none"> • Green: 7 or more avail • Yellow: 4 - 6 teams available • Red: > 8 teams deployed/unavailable <i>R-IMAT also red if TL Ops/Log Chief is unavailable & has no qualified replacement</i>
MCOV		60	34	57%	0	6	20	16 units in TX 4 units in OK	<ul style="list-style-type: none"> • Green = 80 – 100% avail • Yellow = 60 – 79% avail • Red = 59% or below avail • Readiness remains 95%

FEMA Readiness – National/Regional Teams



National/Regional Teams									
Resource	Status	Total	FMC Available		Partially Available	Not Available	Status	Comments	Rating Criterion
NWC		5	5	100%	0	0	Activated	Enhanced Watch 24/7	• Green = FMC • Yellow = PMC • Red = NMC
NRCC		2	344	89%	0	44	Not Activated		
HLT		1	N/A	N/A	0	0	Activated		
DEST							Not Activated		
RRCCs		10	10	100%	0	0	Activated	Region IX Level II (11:00 a.m. – 11:00 p.m. EDT)	
RWCs/MOCs		10	10	100%	0	0	Activated	Region IX RWC is at Enhanced Watch	



FEMA

FEMA's mission is to support our citizens and first responders to ensure that as a nation we work together to build, sustain, and improve our capability to prepare for, protect against, respond to, recover from, and mitigate all hazards.