

The Disaster Center is dedicated to the idea that disaster mitigation is cost effective and individuals pursuing their own interest are the greatest potential force for disaster reduction.

Please consider making a small donation to the Disaster Center



When disaster mitigation is cost effective, we are on the road to bringing disasters to an end.



FEMA

Daily Operations Briefing

Monday, July 6, 2015

8:30 a.m. EDT

Significant Activity: July 2 – 6



Significant Events:

- Typhoon Nangka (11W)
- Tropical Storm Chan-Hom (09W) - Final

Tropical Activity:

- Atlantic: Tropical cyclone activity not expected next 48 hours
- Eastern Pacific: Disturbance 1 (Medium 60%)
- Central Pacific: Disturbance 1 (Medium 60%); Disturbance 2 (Low 10%); Disturbance 3 (Low 10%)
- Western Pacific: Tropical Storm Chan-Hom (9W); Typhoon Nangka (11W)

Significant Weather:

- Strong to severe thunderstorms – Southern Rockies and South-central Plains to Upper Great Lakes; portions of the Mid-Atlantic and Southeast
- Rain and thunderstorms – Most of U.S. with exception of portions of the Pacific Northwest, Northern Intermountain, Northern Rockies/Plains, California, Upper Mississippi Valley, Southern Plains and Northeast
- Flash flooding possible – Central/Southern Rockies and Texas panhandle to Middle Mississippi Valley
- Red Flag Warnings: CA, OR and AK
- Isolated Dry Thunderstorms: CA and OR

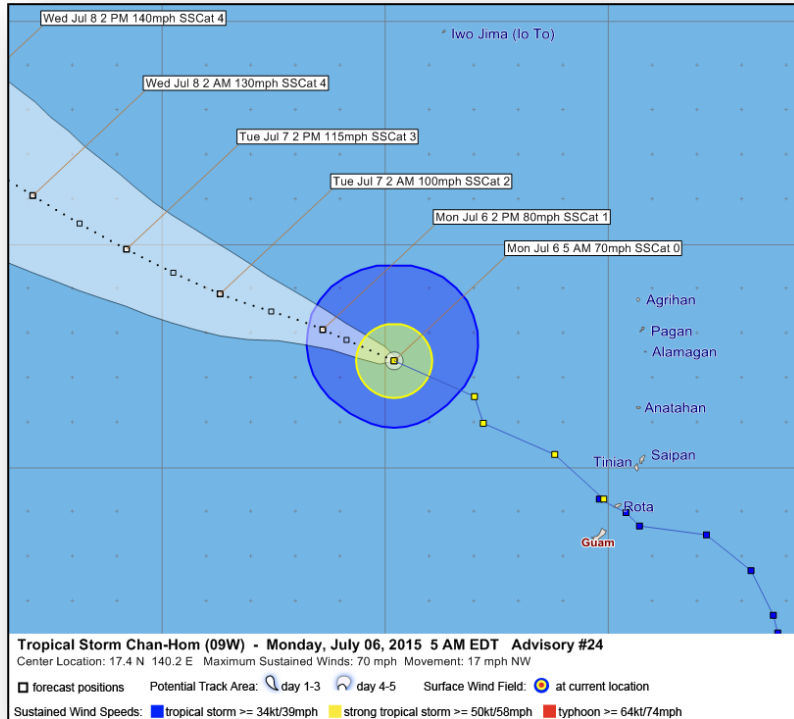
Space Weather:

- Past 24 hours: Minor (R1) radio blackouts occurred; Next 24 hours: no space weather storms predicted

Declaration Activity:

- FEMA-5088-FM-ID for Cape Horn Fire, ID
- Amendment No. 9 for FEMA-4222-DR-OK

Tropical Storm Chan-Hom (09W) – Final



As of 11:00 a.m. EDT

- Moving WNW of Guam at 17 mph
- Forecast to slowly intensify as it moves away from Marianas
- All Tropical Storm Watches/Warnings have been cancelled

Impacts:

- No significant impacts reported at this time
- Airports are closed in Rota & Tinian; Saipan & Guam airports open
- Seaport on Guam open; CNMI seaports pending USCG inspections
- No significant power outage numbers were reported
- No shortfalls reported; no request for FEMA assistance

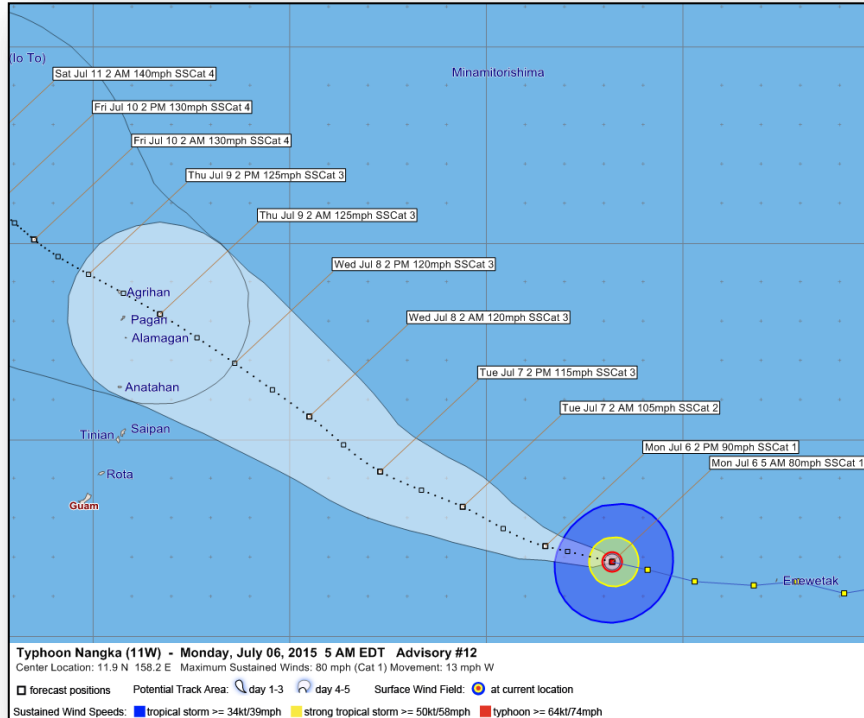
Territory Response

- Guam and CNMI EOCs have returned to Normal Operations
- All shelters are closed

FEMA Region IX/ FEMA Headquarters

- RWC – Watch Steady State / RRCC – Normal Operations
- Regional IMAT along with ESF-3, 8, 12, DCO/DCE; returning to the region
- FEMA LNOs demobilized
- National Watch Center (NWC) returned to Watch Steady State

Western Pacific – Typhoon Nangka (11W)



As of 5:00 a.m. EDT

- Located 917 miles E of Guam
- Moving WNW at 13 mph then turning NW Tuesday afternoon (EDT)
- Forecast track has storm moving north of the populated islands of CNMI
- Maximum sustained winds 80 mph, with higher gusts
- No watches or warnings in effect for U.S. territories

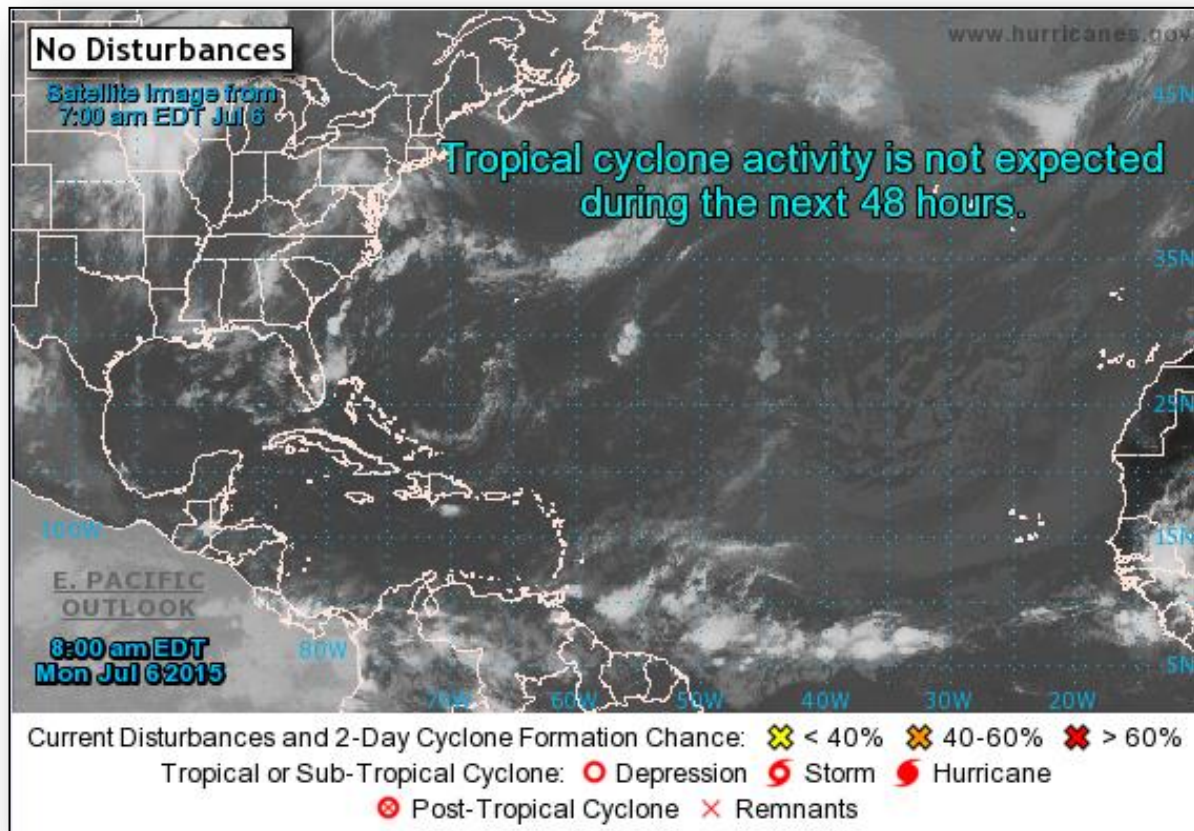
FEMA Region IX/ FEMA Headquarters

- RWC – Watch Steady State / RRCC – Normal Operations
- ISB remains in HI until current threat to CNMI/Guam can be determined
- National Watch Center (NWC) returned to Watch Steady State

2-Day Tropical Outlook – Atlantic



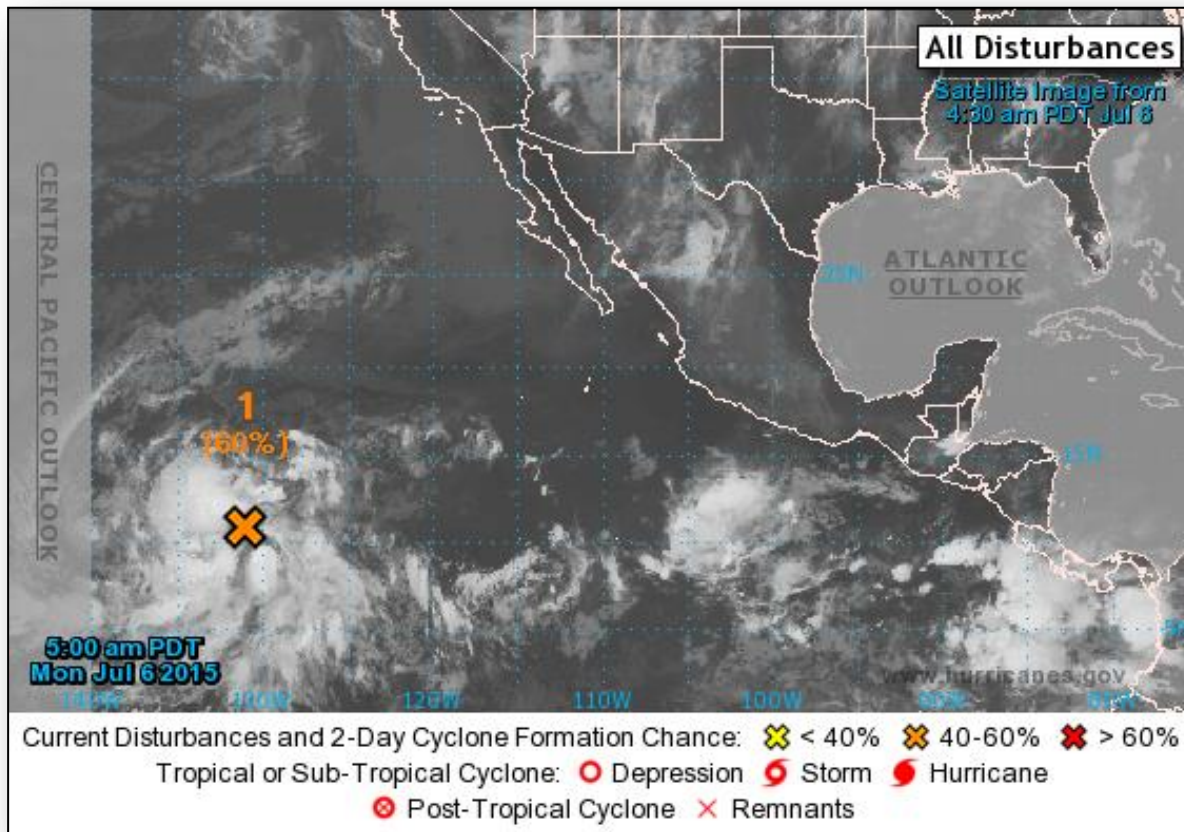
FEMA



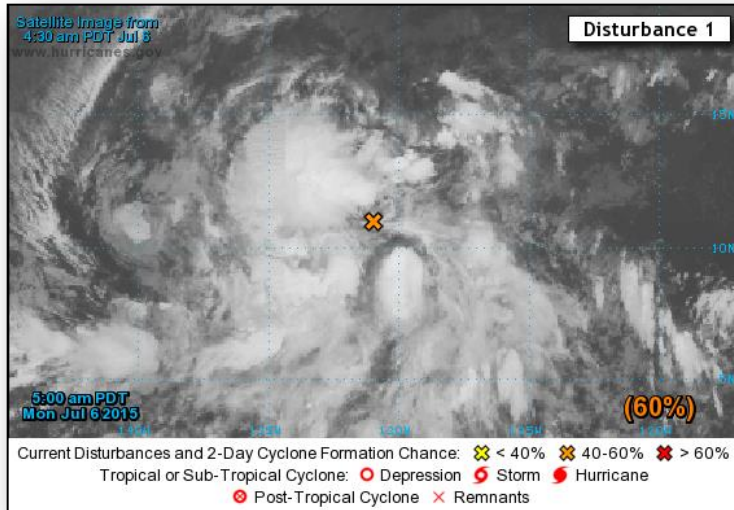
2-Day Tropical Outlook – Eastern Pacific



FEMA



Eastern Pacific – Disturbance 1



Disturbance 1: (as of 8:00 a.m. EDT)

- Large area of low pressure 1,700 miles ESE of the Big Island of Hawaii, moving WNW at 15 mph
- Very little change in the last few hours
- Conditions expected to become more conducive for development
- A tropical depression could form in the next day or two
- Formation chance (48-Hours): Medium – 60%
- Formation chance (5-Days): High – 90%

Central Pacific - Tropical Outlook



Disturbance 1: (as of 8:00 a.m. EDT)

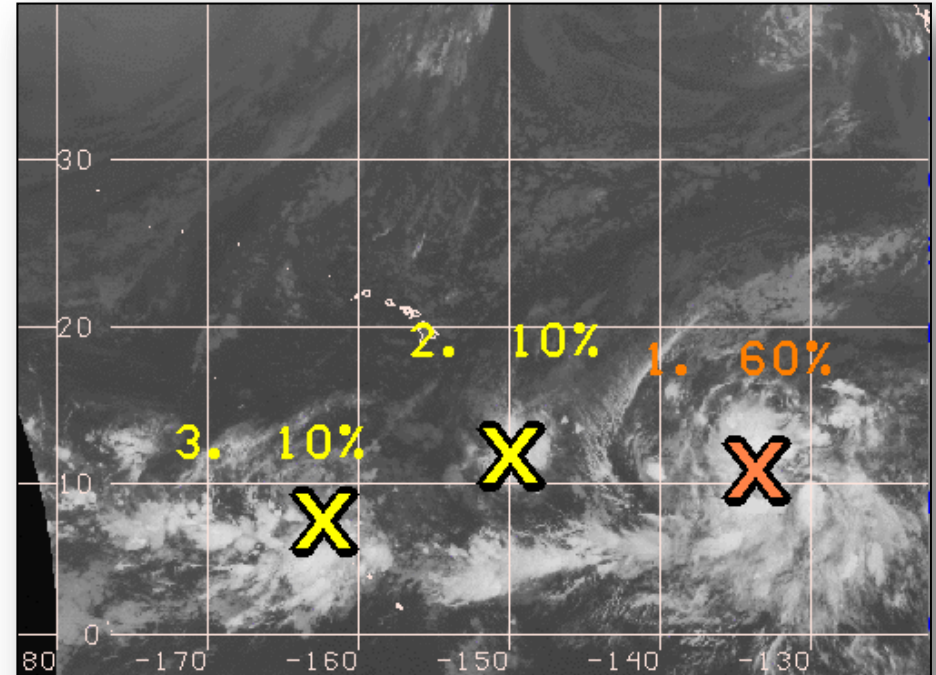
- Large area of low pressure 1,700 miles ESE of Hilo, HI
- Moving WNW at 15 mph
- Thunderstorm activity increasing as conditions become more conducive for development
- A tropical depression could form by Tuesday
- Formation chance (48-Hours): Medium – 60%

Disturbance 2: (as of 8:00 a.m. EDT)

- Area of disturbed weather, associated with a weak surface low about 680 miles SE of Hilo, HI
- System remains disorganized, but environmental conditions may become more favorable for gradual development as it remains nearly stationary
- Formation chance (48 hours): Low - 10%

Disturbance 3: (as of 8:00 a.m. EDT)

- Thunderstorms around a weak, nearly stationary low pressure area 1,000 miles SW of Honolulu, HI
- Conditions are not expected to be conducive for development through Tuesday night
- Formation chance (48 hours): Low – 10%



Satellite Imagery: 130 am HST

"X" denotes position of systems discussed in the Tropical Weather Outlook. Color indicates probability of tropical cyclone formation within 48 hours.

Low 0-30% Medium 40-60% High 70-100%

Cape Horn Fire – Idaho



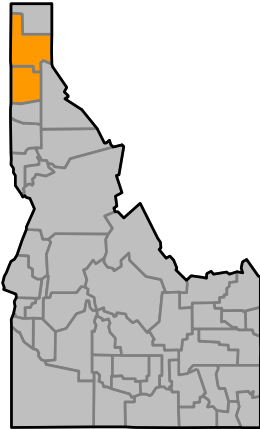
Fire Name	Location	Acres burned	% Contained	Est. Full Containment	FMAG	Structures Lost / Threatened	Fatalities / Injuries
Cape Horn	Kootenai & Bonner counties	1,200	0%	N/A	Approved July 6	6 homes/281 Homes	0 / 0

Situation

- FMAG 5088-FM-ID approved July 6, 2015
- Fire began Sunday, July 5 near Bayview (pop. 400), east of the Cape Horn area
- Fire is burning on State & Federal land; moving towards Bayview
- Mandatory evacuation for 300 people (Broadview development in Wenatchee & Sunrise Circle)
- Type-II Management Team arriving later today
- FMAG requested & approved on July 6

Response

- ID EOC is at Normal Operations
- FEMA Region X at Watch/Steady State



 Kootenai County

Disaster Requests & Declarations



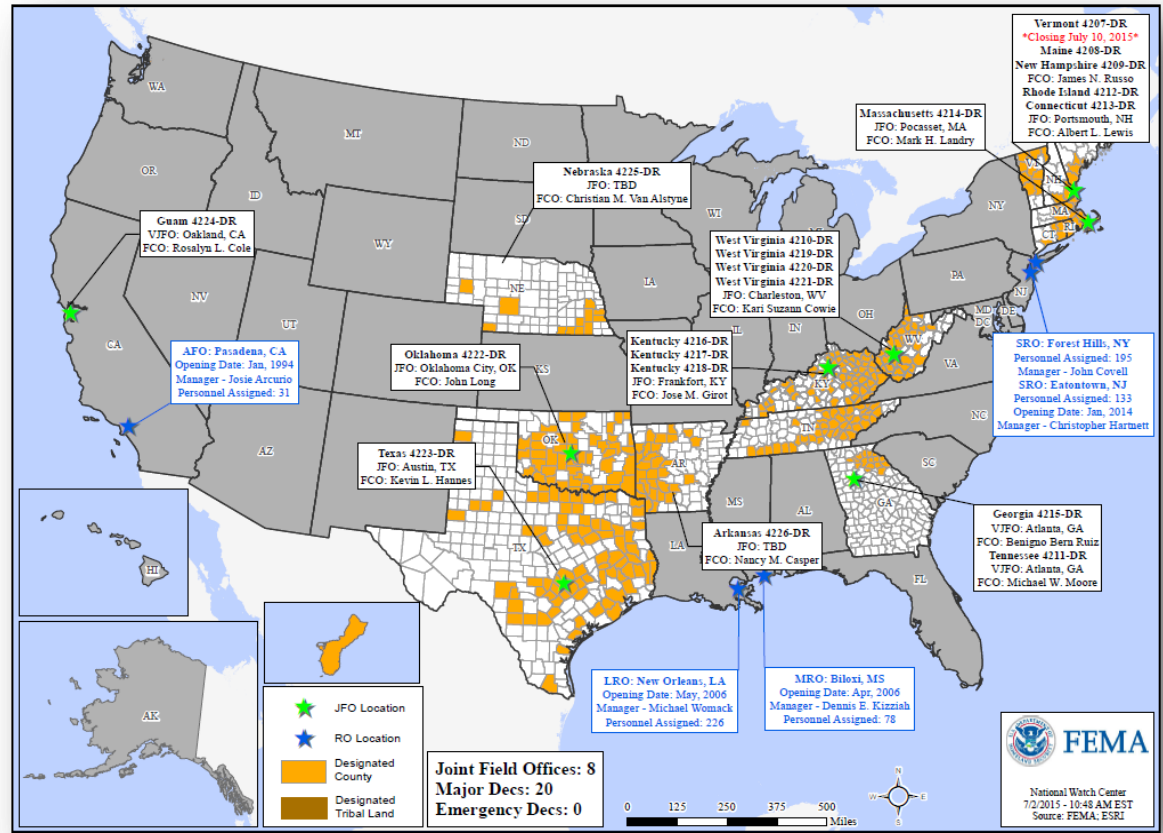
Declaration Requests in Process		Requests APPROVED (since last report)	Requests DENIED (since last report)
3	Date Requested	0	0
IA – DR Avian Influenza Outbreak	June 17, 2015		
WY – DR Severe Storms and Flooding	June 19, 2015		
KS – DR Severe Storms, Tornadoes, and Flooding	July 1, 2015		

Disaster Amendments



Amendment	Effective Date	Action
Amendment No. 9 FEMA-4222-DR-OK	July 2, 2015	Added 9 counties for Individual Assistance

Open Field Offices as of July 6

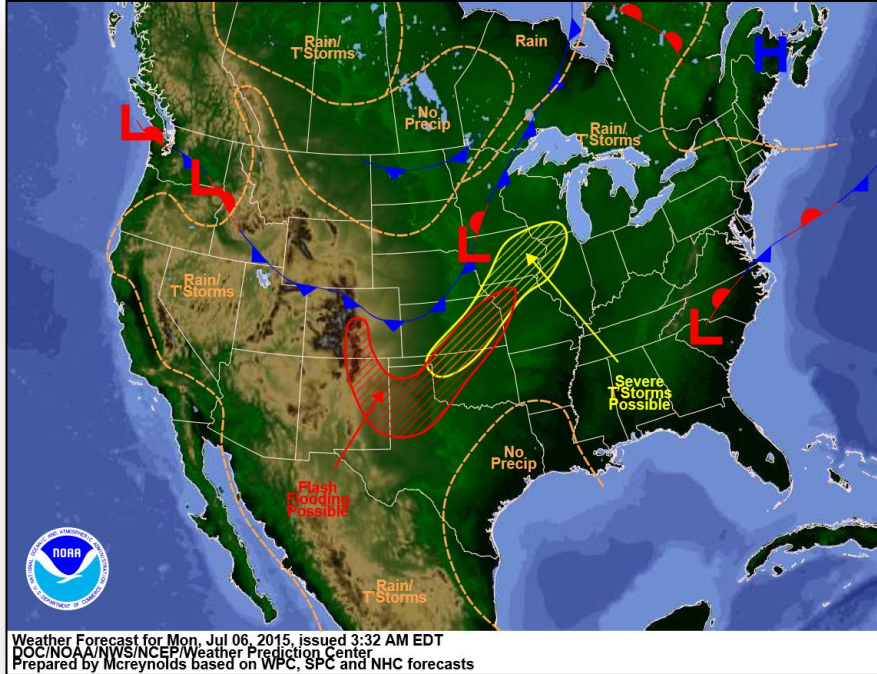


Joint Preliminary Damage Assessments

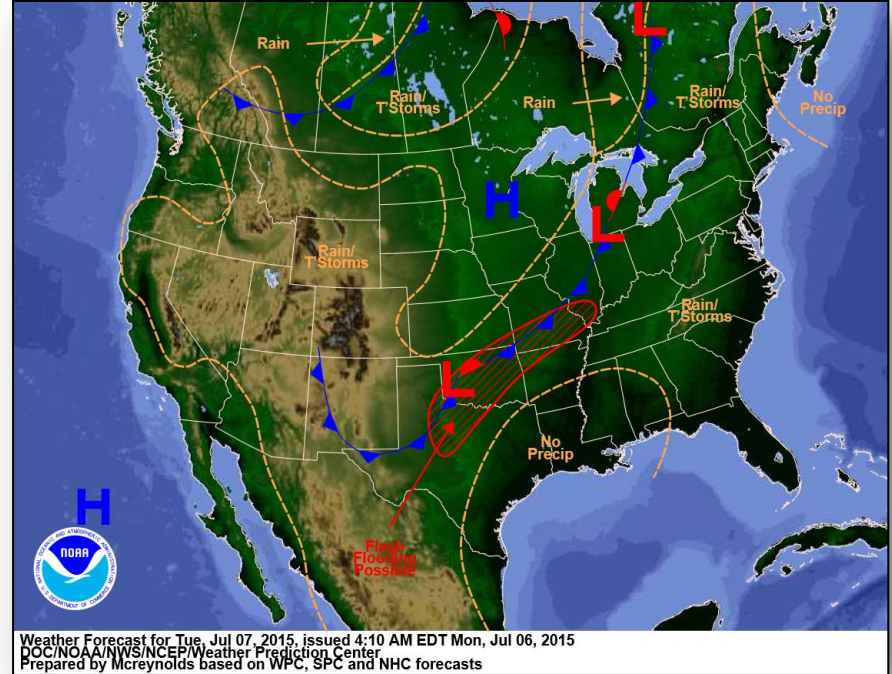


Region	State / Location	Event	IA/PA	Number of Counties		Start – End
				Requested	Complete	
I	VT	Flooding June 9, 2015	PA	3	0	6/26 – TBD
VI	LA	Red River Flooding May 18, 2015 and continuing	IA	2	2	6/24 – 6/26
			PA	6	5	6/24 – TBD
	TX	Severe Storms, Tornadoes & Flooding May 5, 2015 and continuing	IA	44 (+3)	39 (+1)	5/29 – TBD
			PA	92	73 (+7)	5/29 – TBD
	OK	Severe Storms Tornadoes, Straight-Line Winds and Flooding	IA	35	35	5/26 – 6/26
PA			63 (+2)	61 (+2)	6/26 – TBD	
VII	IA	Severe Storms June 22, 2015 and continuing	PA	17 (+17)	0	TBD -TBD
	MO	Severe Storms, Straight-line Winds & Flooding May 15, 2015 and continuing	PA	44 (+23)	4 (+4)	6/29 – TBD
X	AK	Sockeye Fire June 15, 2015 and continuing	IA	1	1	6/25 – 6/26
			PA	1	1 (+1)	6/30 – 7/2
		Card Street Fire June 15, 2015 and continuing	IA	1	1 (+1)	6/30 – 7/2
			PA	1	0	7/6 – TBD

National Weather Forecast

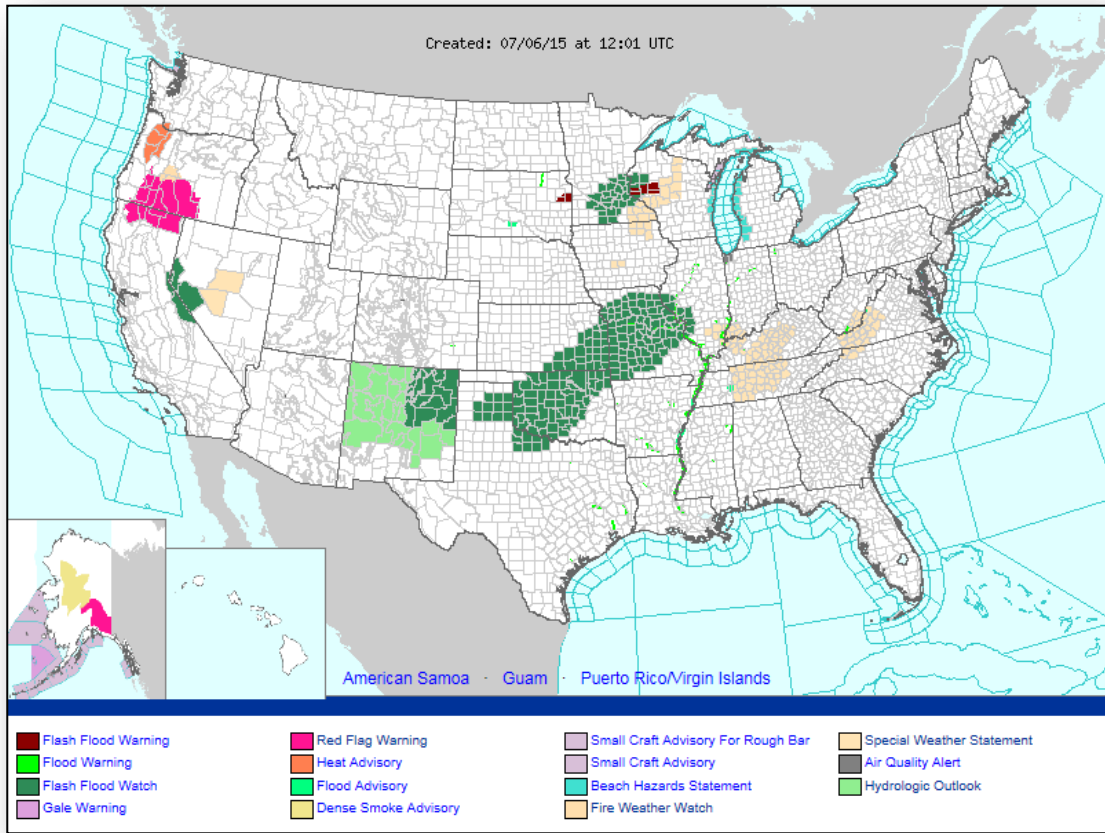


Today

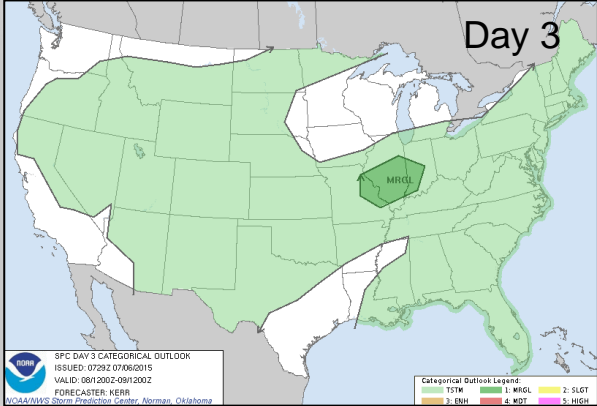
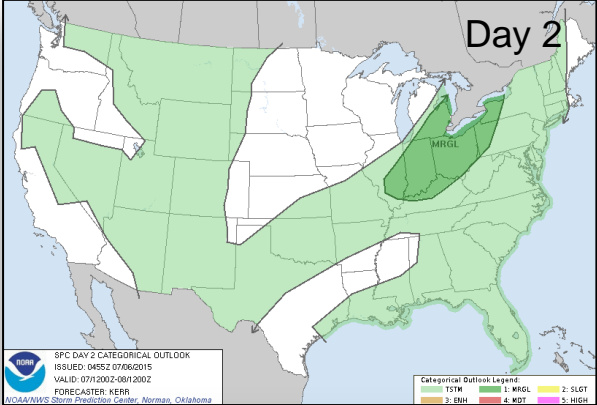
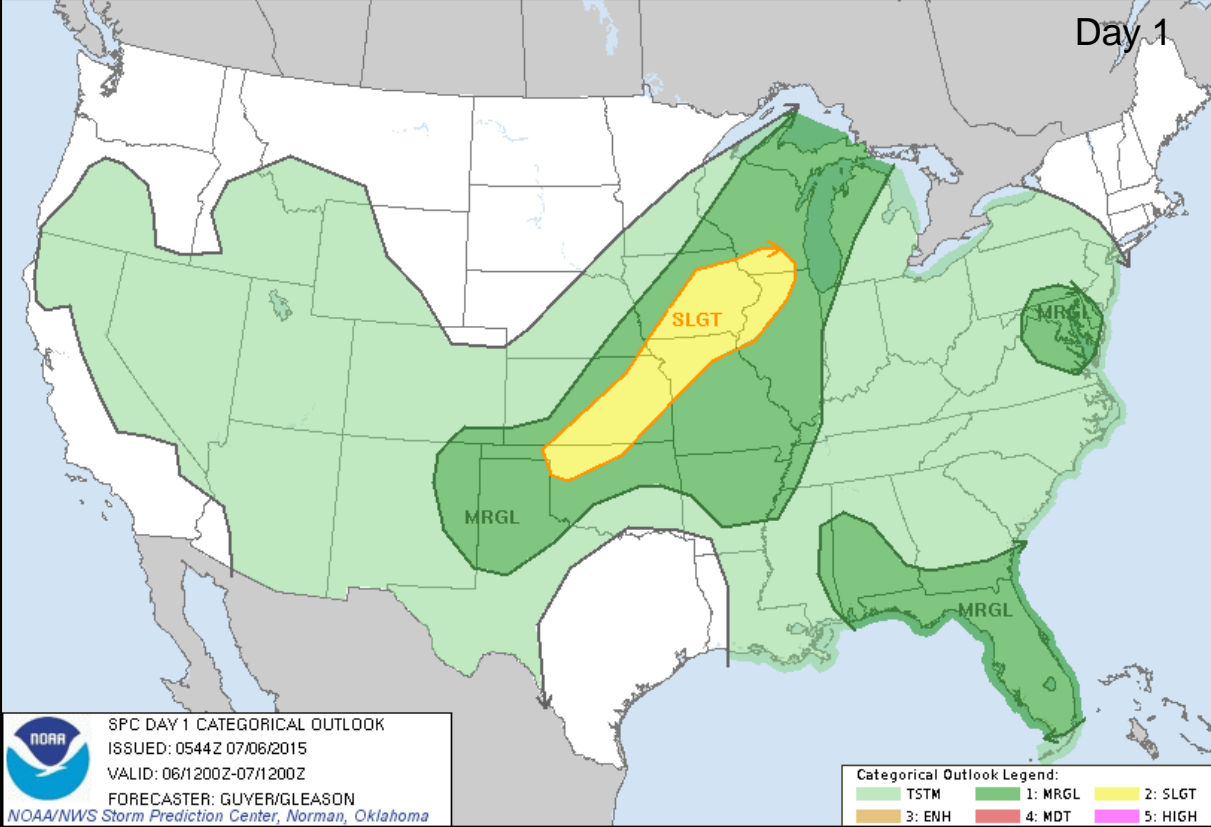


Tomorrow

Active Watches/Warnings



Severe Weather Outlook, Days 1-3



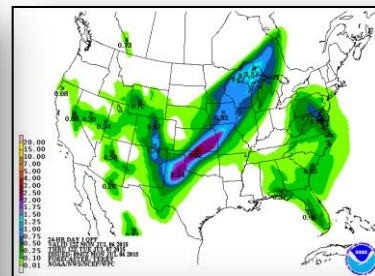
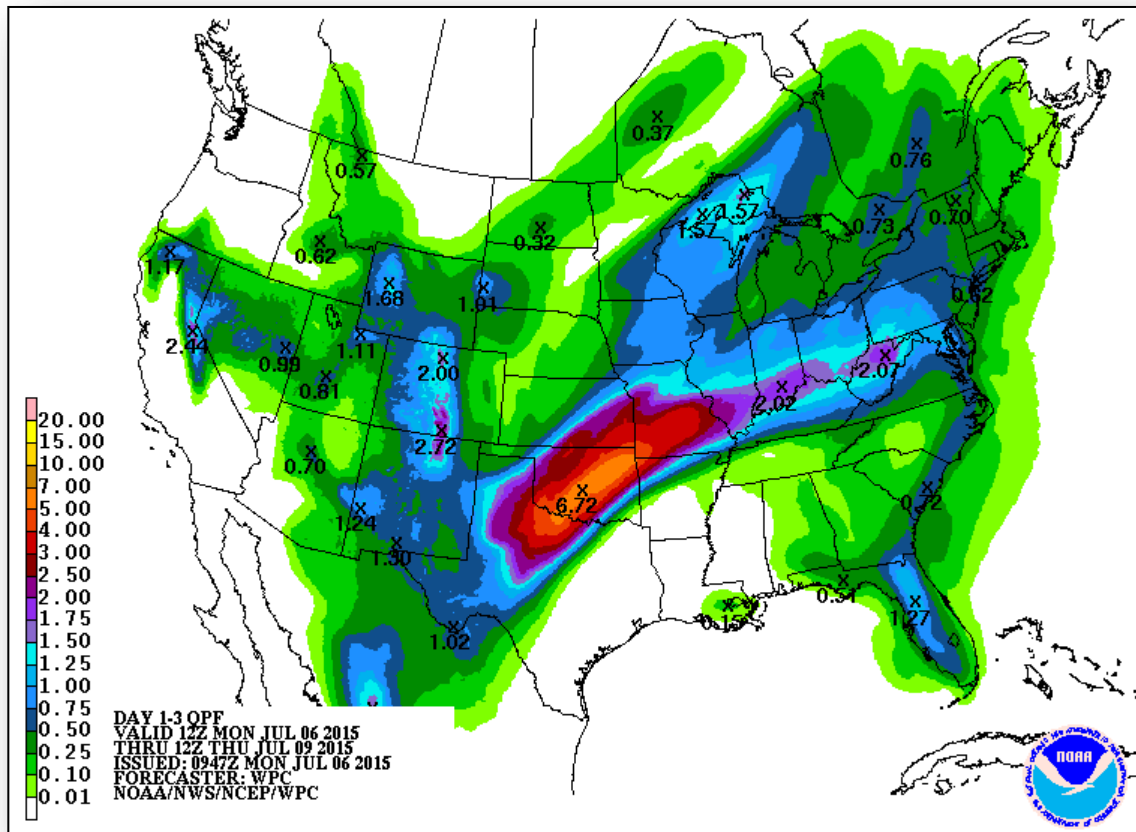
Categories

- Thunderstorms
- Marginal Risk
- Slight Risk
- Enhanced Risk
- Moderate Risk
- High Risk

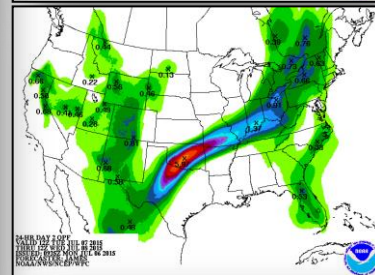
Precipitation Forecast, 1-3 Day



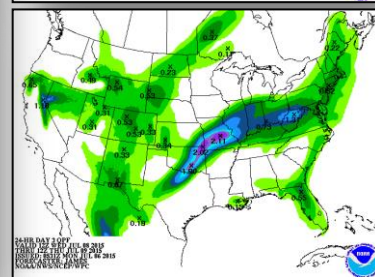
FEMA



Day 1



Day 2

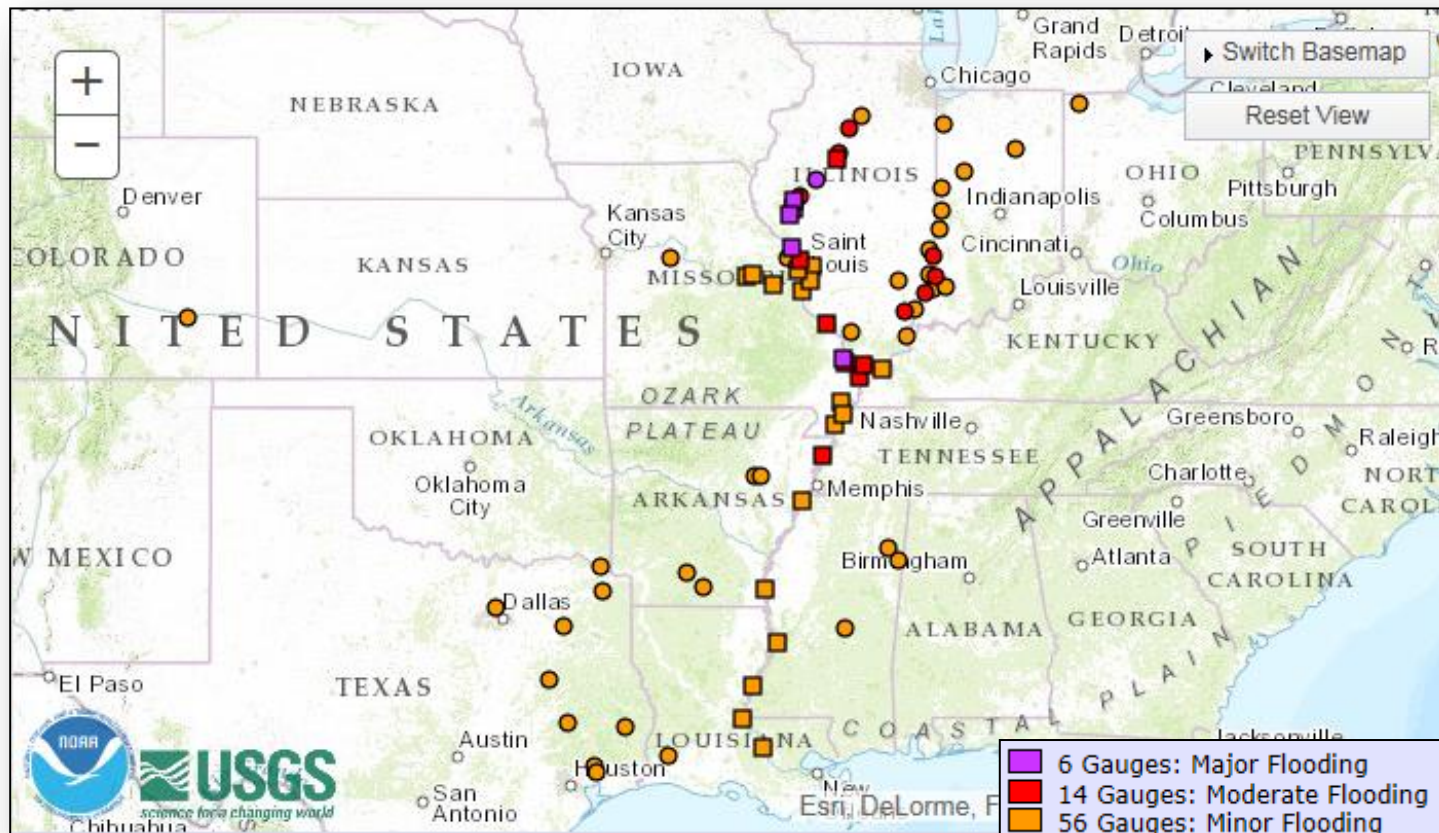


Day 3

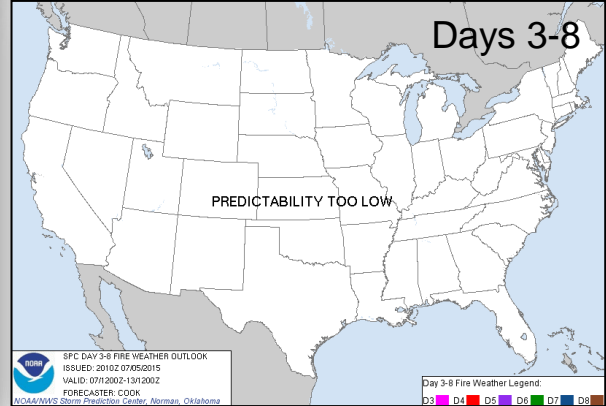
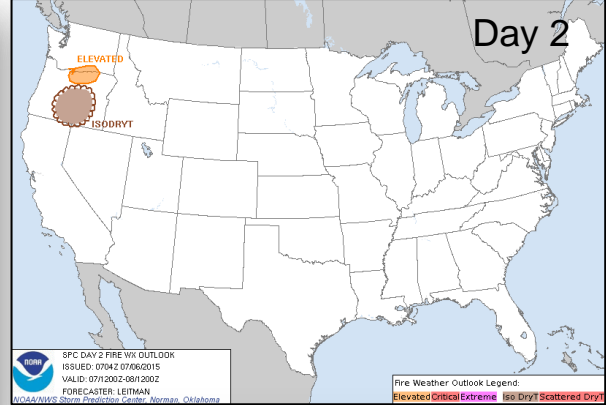
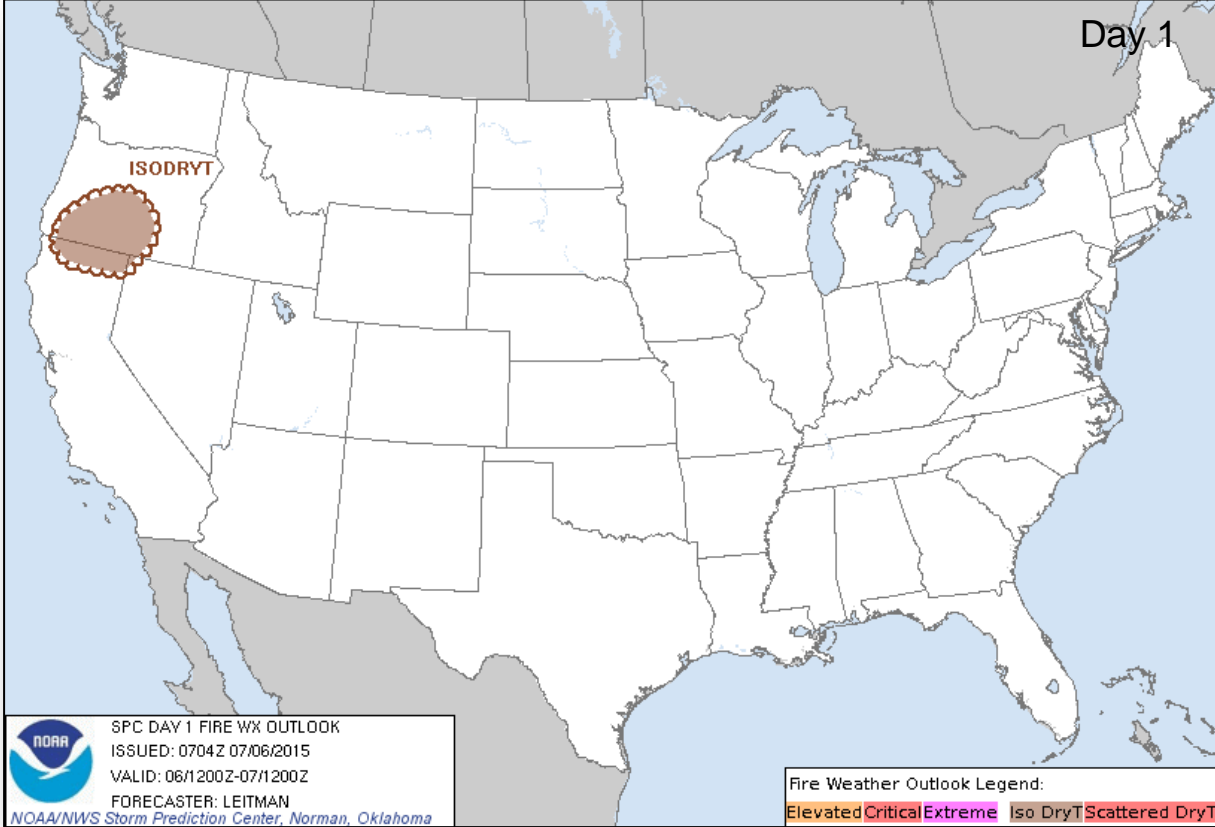
River Forecast



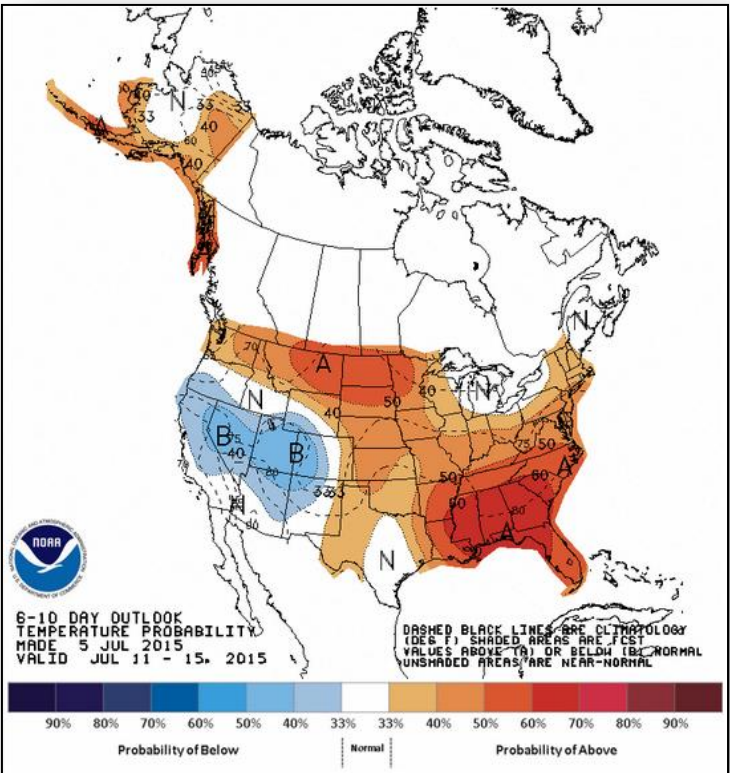
FEMA



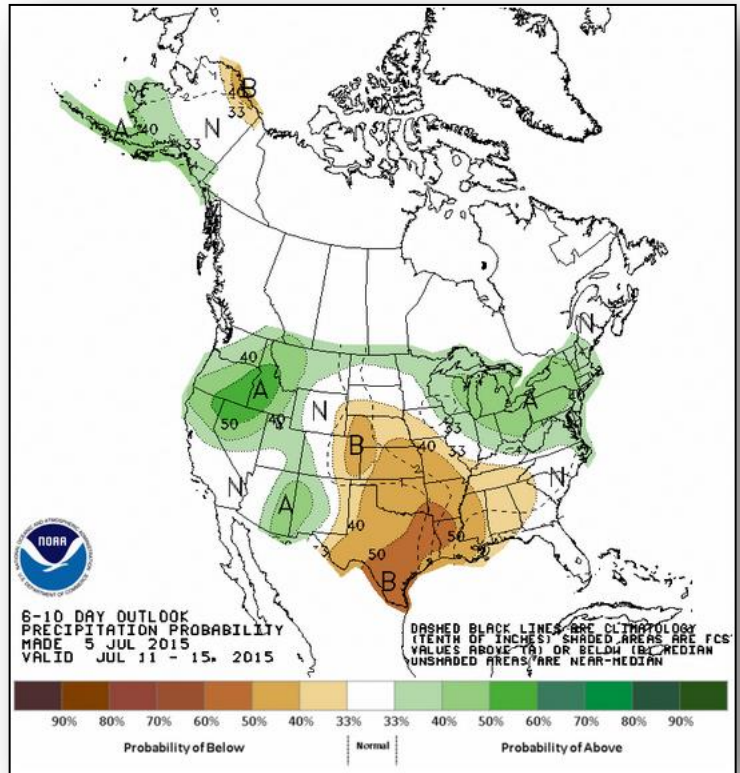
Fire Weather Outlook, Days 1-8



6-10 Day Outlooks



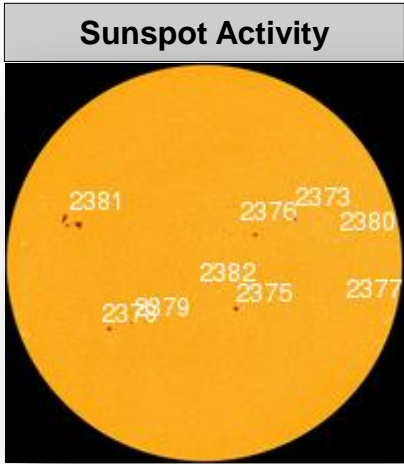
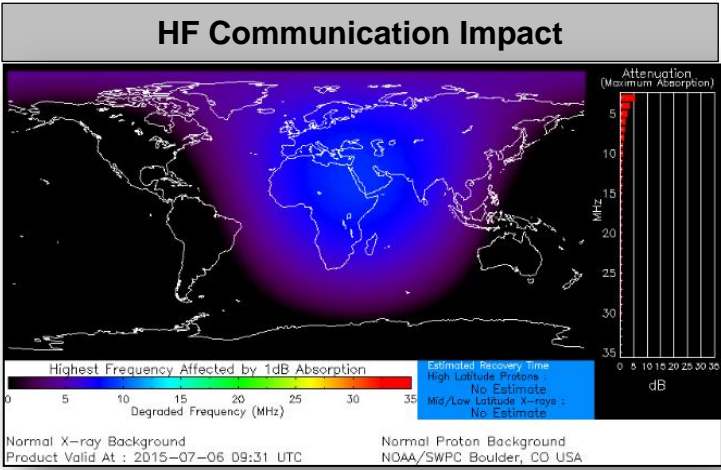
Temperature Probability



Precipitation Probability

Space Weather

None	Past 24 Hours	Current	Next 24 Hours
Space Weather Activity:	Minor	None	None
• Geomagnetic Storms	None	None	None
• Solar Radiation Storms	None	None	None
• Radio Blackouts	R1	None	None



FEMA Readiness – Deployable Teams /Assets



Deployable Teams/Assets									
Resource	Status	Total	FMC Available		Partially Available	Not Available	Detailed, Deployed, Activated	Comments	Rating Criterion
FCO	Green	35	11	31%	0	1	23		OFDC Readiness: FCO Green Yellow Red Type 1 3+ 2 1 Type 2 4+ 3 2 Type 3 4 3 2 FDRC 3 2 1
FDRC	Green	9	7	78%	0	0	2		
US&R	Green	28	27	96%	0	1	0	NM-TF1 (Red) – Personnel shortages	<ul style="list-style-type: none"> Green = Available/FMC Yellow = Available/PMC Red = Out-of-Service Blue = Assigned/Deployed
National IMAT	Yellow	3	2	67%	0	0	1	Elements of IMAT East-2 deployed to TX	<ul style="list-style-type: none"> Green: 3 avail Yellow: 1-2 avail Red: 0 avail (<i>Individual N-IMAT red if 50% of Section Chiefs and/or Team Leader is unavailable for deployment.</i>)
Regional IMAT	Yellow	13	4	31%	1	4	4	Deployed (Blue): RII (Team A) to TX supporting FEMA-4223-DR-TX RV to RVI supporting severe weather/flooding RVI (Team 1) to TX & personnel to OK RIX (Team 2) demobilizing from Guam Partially Available (Yellow): RX IMAT returned from Alaska Not Mission Capable (Red): <u>Personnel shortages/staff adjustments</u> R1 (Team 1); RIV (Team 3); RVI (Team 2); RIX (Team 1)	<ul style="list-style-type: none"> Green: 7 or more avail Yellow: 4 - 6 teams available Red: > 8 teams deployed/unavailable R-IMAT also red if TL Ops/Log Chief is unavailable & has no qualified replacement
MCOV	Red	60	34	57%	0	6	20	16 units in TX 4 units in OK	<ul style="list-style-type: none"> Green = 80 – 100% avail Yellow = 60 – 79% avail Red = 59% or below avail Readiness remains 95%

FEMA Readiness – National/Regional Teams



National/Regional Teams									
Resource	Status	Total	FMC Available		Partially Available	Not Available	Status	Comments	Rating Criterion
NWC		5	5	100%	0	0	Not Activated	Returned to Watch Steady State	<ul style="list-style-type: none"> • Green = FMC • Yellow = PMC • Red = NMC
NRCC		2	344	89%	0	44	Not Activated		
HLT		1	N/A	N/A	0	0	Activated		
DEST							Not Activated		
RRCCs		10	10	100%	0	0	Not Activated	Region IX Deactivated	
RWCs/MOCs		10	10	100%	0	0	Not Activated	Region IX RWC returned to Watch Steady State	



FEMA

FEMA's mission is to support our citizens and first responders to ensure that as a nation we work together to build, sustain, and improve our capability to prepare for, protect against, respond to, recover from, and mitigate all hazards.