

The Disaster Center is dedicated to the idea that disaster mitigation is cost effective and individuals pursuing their own interest are the greatest potential force for disaster reduction.

Please consider making a small donation to the Disaster Center



When disaster mitigation is cost effective, we are on the road to bringing disasters to an end.



# **FEMA**

## **Daily Operations Briefing**

**Wednesday, July 8, 2015**

**8:30 a.m. EDT**

# Significant Activity: July 7-8



## **Significant Events:**

- Typhoon Nangka (11W)
- Tropical Depression 4E

## **Tropical Activity:**

- Atlantic: Tropical cyclone activity not expected next 48 hours
- Eastern Pacific: Tropical cyclone activity not expected next 48 hours
- Central Pacific: Tropical Depression 4E; Disturbance 1 (Low 10%); Disturbance 2 (Medium 60%)
- Western Pacific: Typhoon Nangka (11W)

## **Significant Weather:**

- Showers & thunderstorms – for portions of the Intermountain West
- Flash flooding possible – from portions of the Southern Plains to the Ohio Valley
- Above average temperatures – the Pacific Northwest and Central U.S
- Red Flag Warnings: CA, OR, ID and MT
- Elevated Fire Weather Areas: AZ, NV and CA

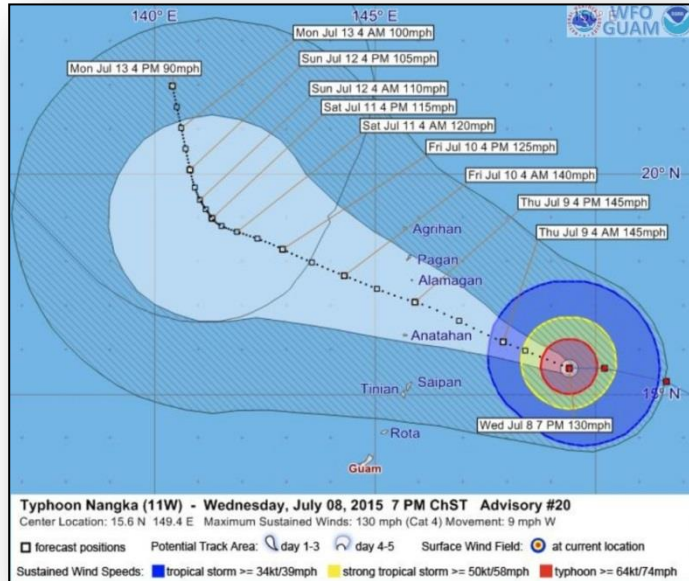
## **Space Weather:**

- Past 24 hours: no space weather storms predicted; Next 24 hours: no space weather storms predicted

## **Declaration Activity:**

- Major Disaster Declaration approved – WY
- Major Disaster Declaration request – LA

# Western Pacific – Typhoon Nangka (11W)



## As of 5:00 a.m. EDT

- Located 345 miles ENE of Guam
- Moving W at 9 mph
- General motion expected to turn WNW
- Maximum sustained winds 130 mph (Cat 4)
- Typhoon-force winds extend outward up to 45 miles from center
- Tropical storm-force winds extend outward up to 140 miles center
- Expected to hold this intensity as it passes through northern CNMI
- Tropical Storm Warning in effect for Saipan and Tinian
- Typhoon Watch remains in effect for Saipan and Tinian
- Typhoon Warning remains in effect for the northern CNMI

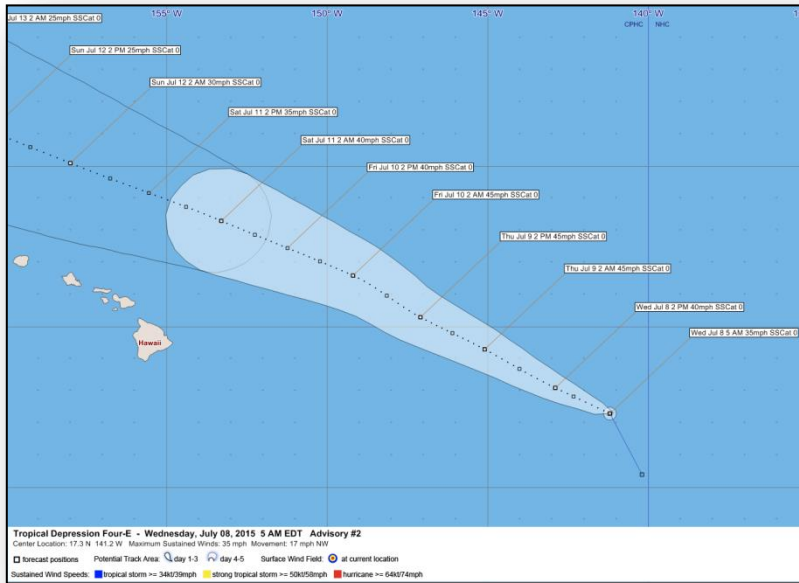
## Impacts:

- Coastal inundation of 1-2 feet is possible on the north and east facing shores; 3-5 inches of rain through early Friday

## Response:

- FEMA Region IX remains at Watch/Steady State
- ISB remains in HI until threat to CNMI/Guam is determined

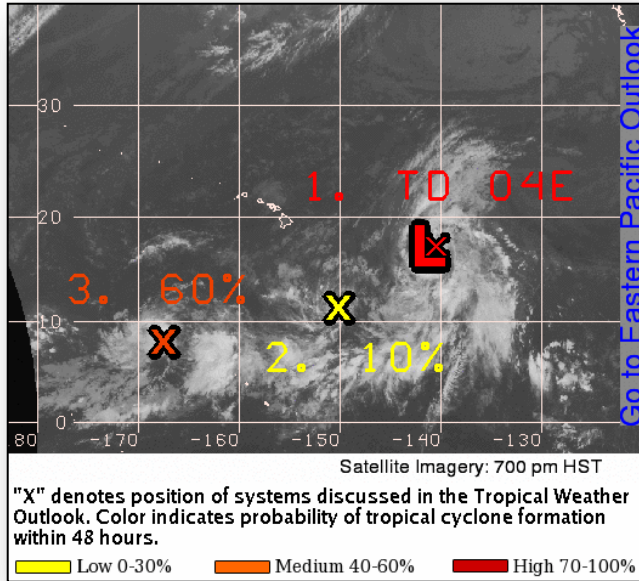
# Central Pacific – Tropical Depression 4E



## Tropical Depression 04E: (as of 5:00 a.m. EDT)

- Located about 925 miles E of Hilo, HI
- Moving NW at 17 mph
- Maximum sustain winds at 35 mph
- Moving NW for the next 48 hours
- Some strengthening expected over the next 48 hours
- TD 4E could be a tropical storm today

# Central Pacific - Tropical Outlook



## **Disturbance 2:** *(as of 2:00 a.m. EDT)*

- Showers and thunderstorms persist near a weak, nearly stationary, low 690 miles SSE of Hilo, HI
- Formation chance through 48 hours: Low (10%)

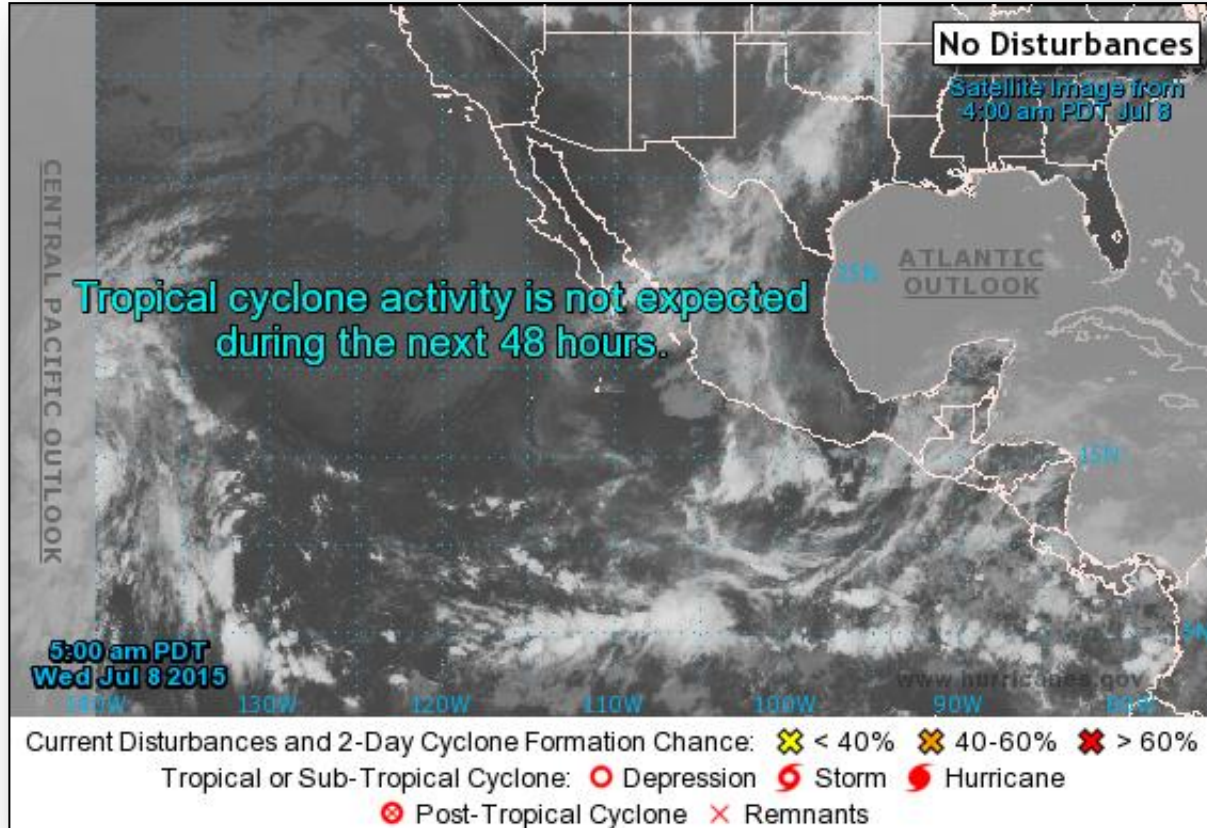
## **Disturbance 3:** *(as of 2:00 a.m. EDT)*

- Showers and thunderstorms associated with an area of low pressure 1,080 miles SSW of Honolulu
- Formation chance through 48 hours: Medium (60%)

# 2-Day Tropical Outlook – Eastern Pacific



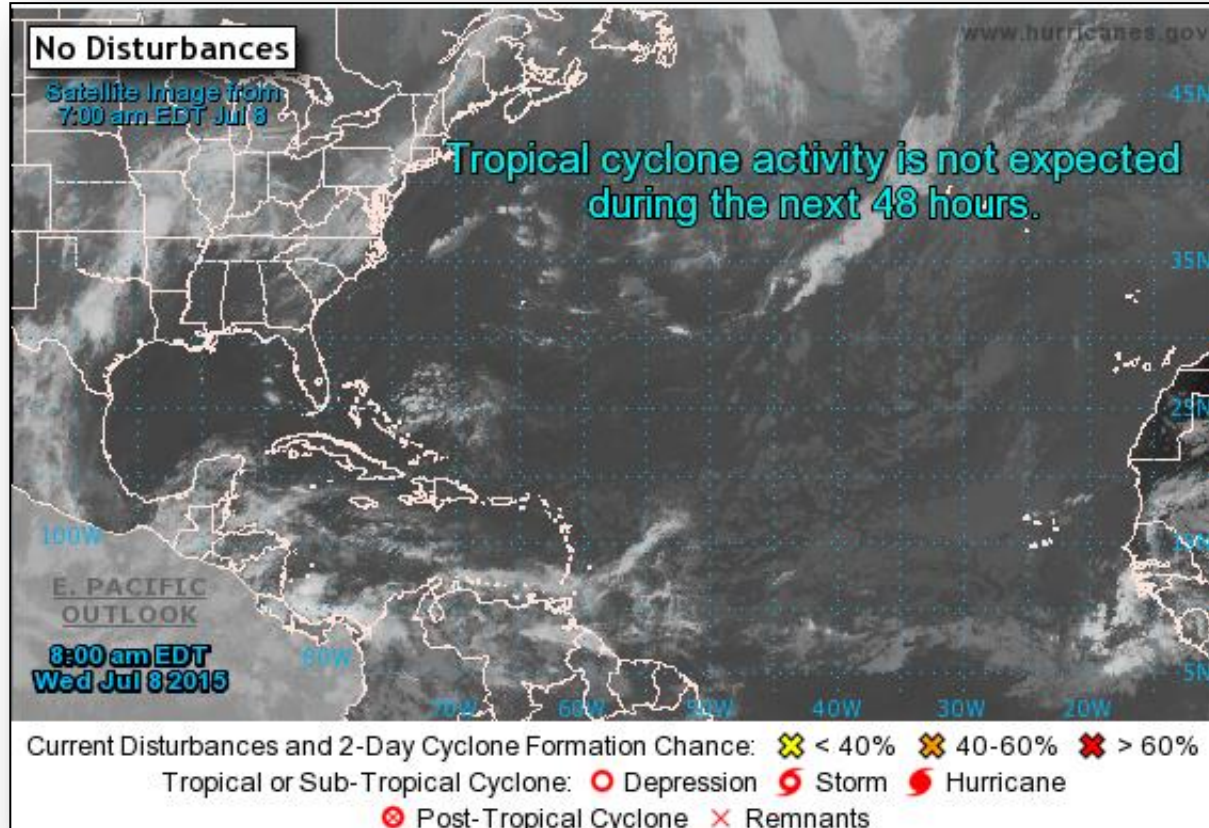
FEMA



# 2-Day Tropical Outlook – Atlantic



FEMA





# Wildfire Summary



Fire Name (County)	FMAG #	Acres burned	% Contained Est. Containment date	Evacuations (Residents)	Structures Threatened	Structures Destroyed	Fatalities / Injuries
<b>Idaho (1)</b>							
Cape Horn (Kootenai & Bonner counties)	FEMA-5088-FM-ID	1,380 (+180)	35% (+35)	Mandatory & voluntary	287 Homes 10 Businesses	8 homes	0/0

# Disaster Requests & Declarations



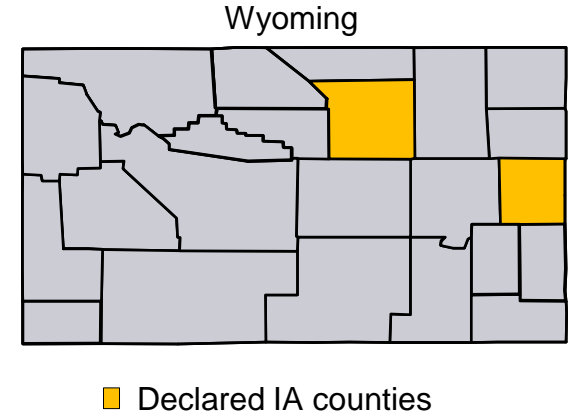
Declaration Requests in Process		Requests APPROVED (since last report)	Requests DENIED (since last report)
<b>3</b>	Date Requested	<b>1</b>	<b>1</b>
IA – DR Avian Influenza Outbreak	June 17, 2015		<b>Denied July 7, 2015</b>
WY – DR Severe Storms and Flooding	June 19, 2015	<b>Declared July 7, 2015</b>	
KS – DR Severe Storms, Tornadoes, and Flooding	July 1, 2015		
WY – DR Severe Storms and Flooding	July 2, 2015		
LA – DR Severe Storms and Flooding	July 6, 2015		

# Major Disaster Declaration – Wyoming



## FEMA-4227-DR-WY

- Major Disaster Declaration approved July 7, 2015 for the State of Wyoming
- For Severe Storms & Flooding May 24 – June 6, 2015
- Provides:
  - Individual Assistance for Johnson and Niobrara counties
  - Hazard Mitigation statewide
- FCO is Thomas J. McCool



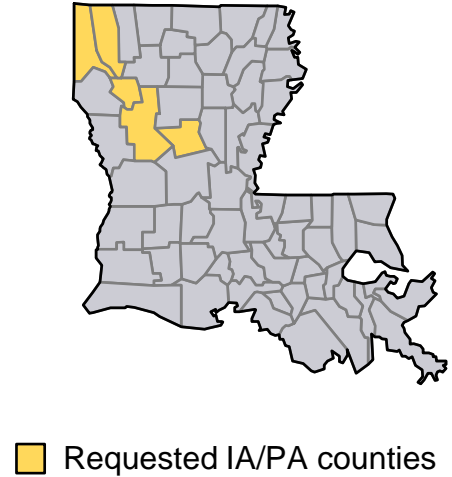
# Major Disaster Declaration Request – LA



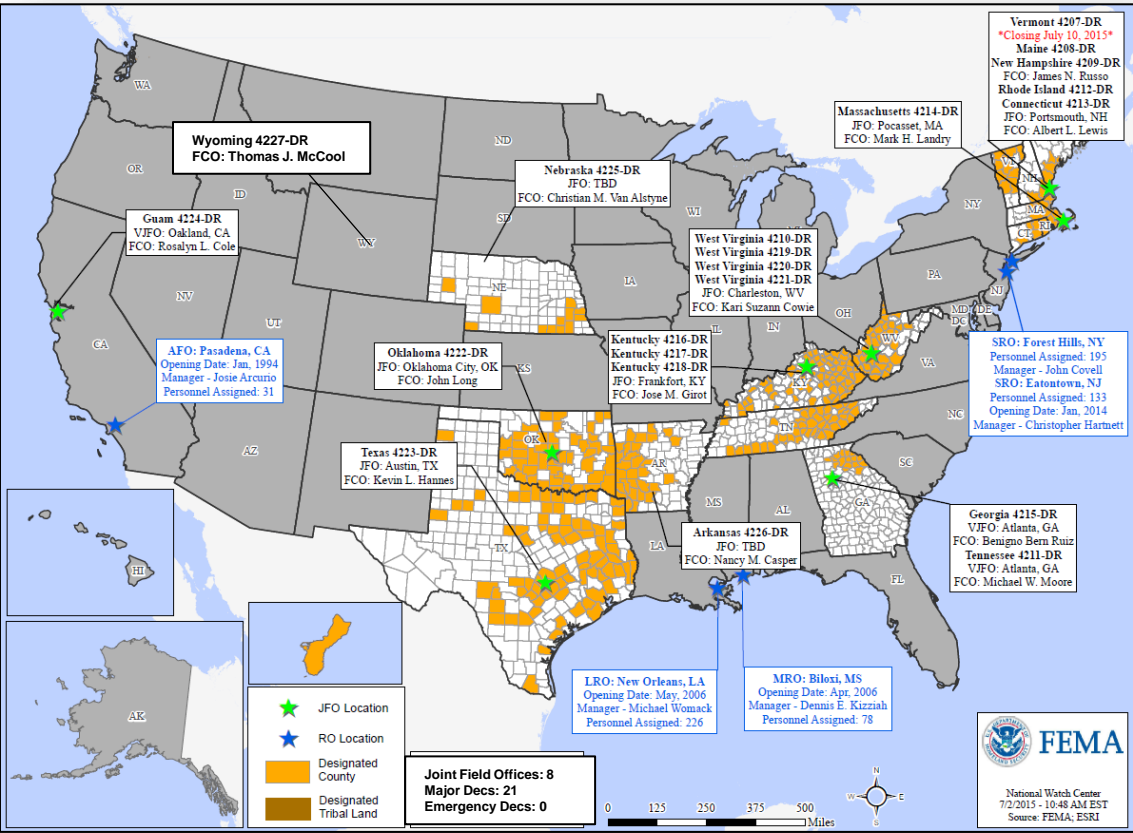
## July 7, 2015

- Governor of Louisiana requested a Major Disaster Declaration
- Due to severe storms, tornadoes, and flooding during the period May 18 – June 20, 2015
- Requesting:
  - Public Assistance for 5 Parishes
  - Individual Assistance for 2 counties
  - Hazard Mitigation statewide

Louisiana



# Open Field Offices as of July 8

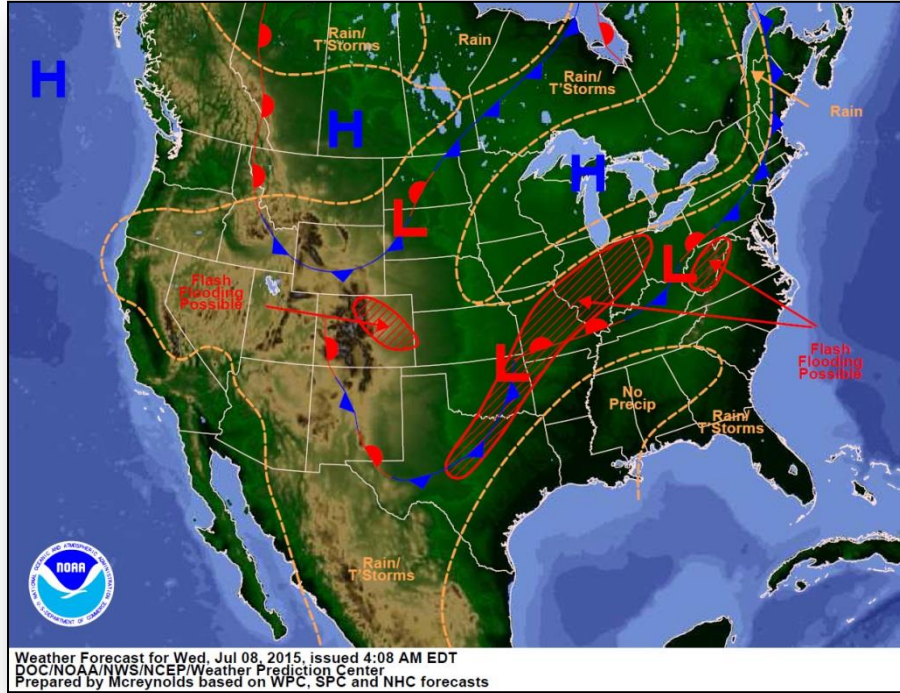


# Joint Preliminary Damage Assessments

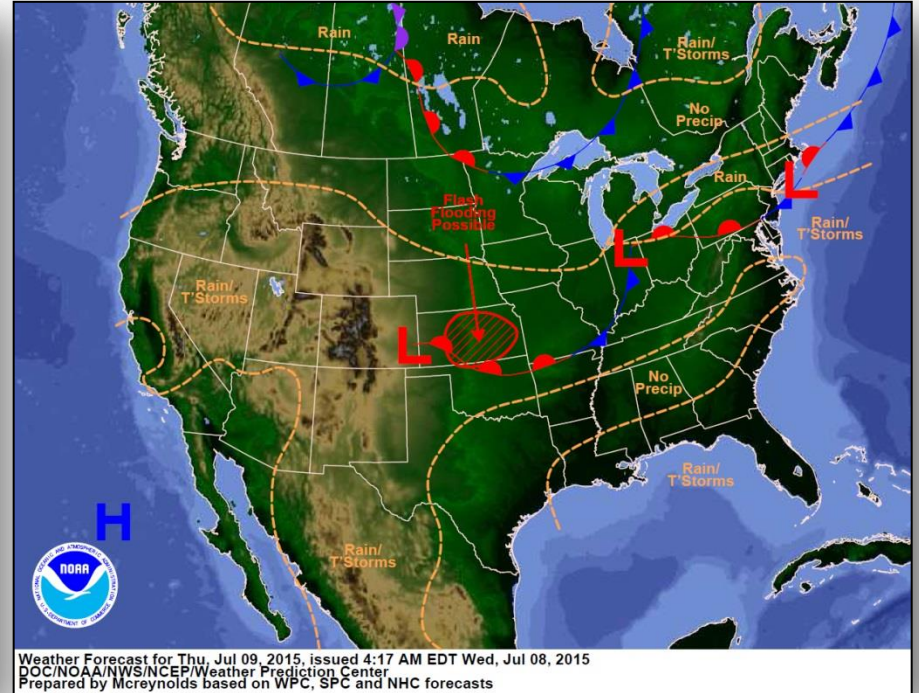


Region	State / Location	Event	IA/PA	Number of Counties		Start – End
				Requested	Complete	
I	VT	Flooding June 9, 2015	PA	3	0	6/26 – TBD
II	NJ	Severe Storms June 23, 2015	IA	3	3	6/27 – 6/29
			PA	4	0	7/08 – TBD
VI	LA	Red River Flooding May 18, 2015 thru June 19	IA	2	2	6/24 – 6/26
			PA	6	5	6/24 – TBD
	TX	Severe Storms, Tornadoes & Flooding May 4, 2015 thru June 19	IA	44	40	5/29 – TBD
			PA	92	73	5/29 – TBD
	OK	Severe Storms Tornadoes, Straight-Line Winds May 5, 2015 thru June 4	IA	35	35	5/26 – 6/26
			PA	63	61	6/26 – TBD
VII	IA	Severe Storms June 22, 2015 and continuing	PA	17	0	TBD – TBD
	MO	Severe Storms, Straight-line Winds & Flooding May 15, 2015 and continuing	PA	44	4	6/29 – TBD
X	AK	Card Street Fire June 15, 2015 thru July 8, 2015	IA	1	1	6/30 – 7/2
			PA	1	0	7/6 – TBD

# National Weather Forecast

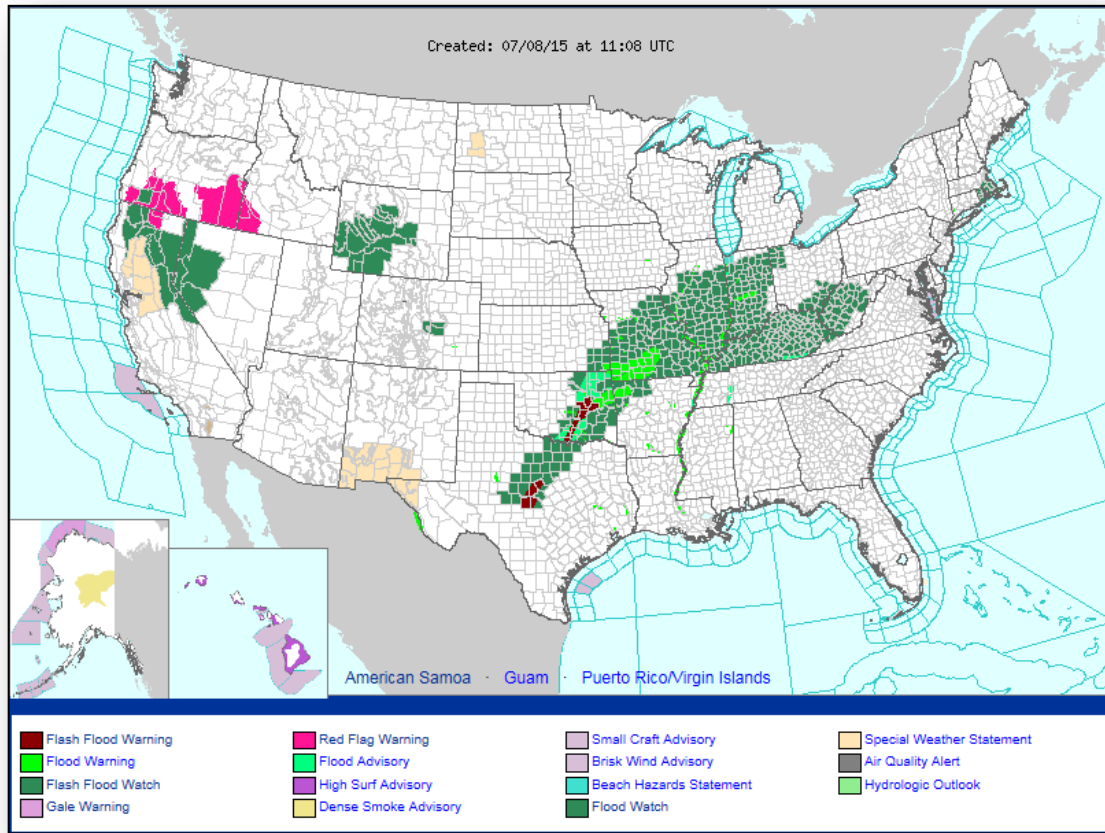


*Today*



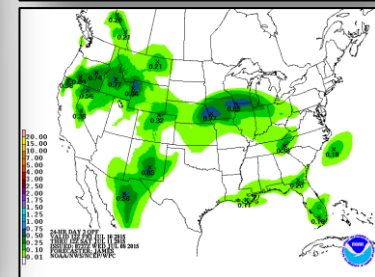
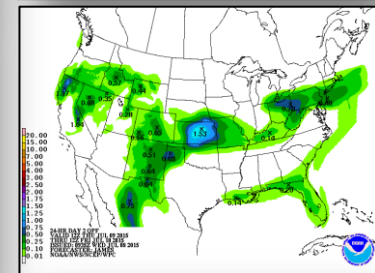
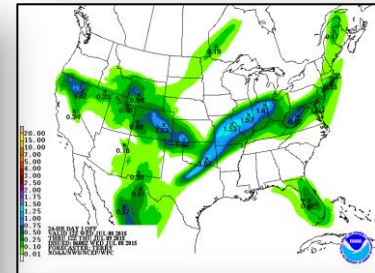
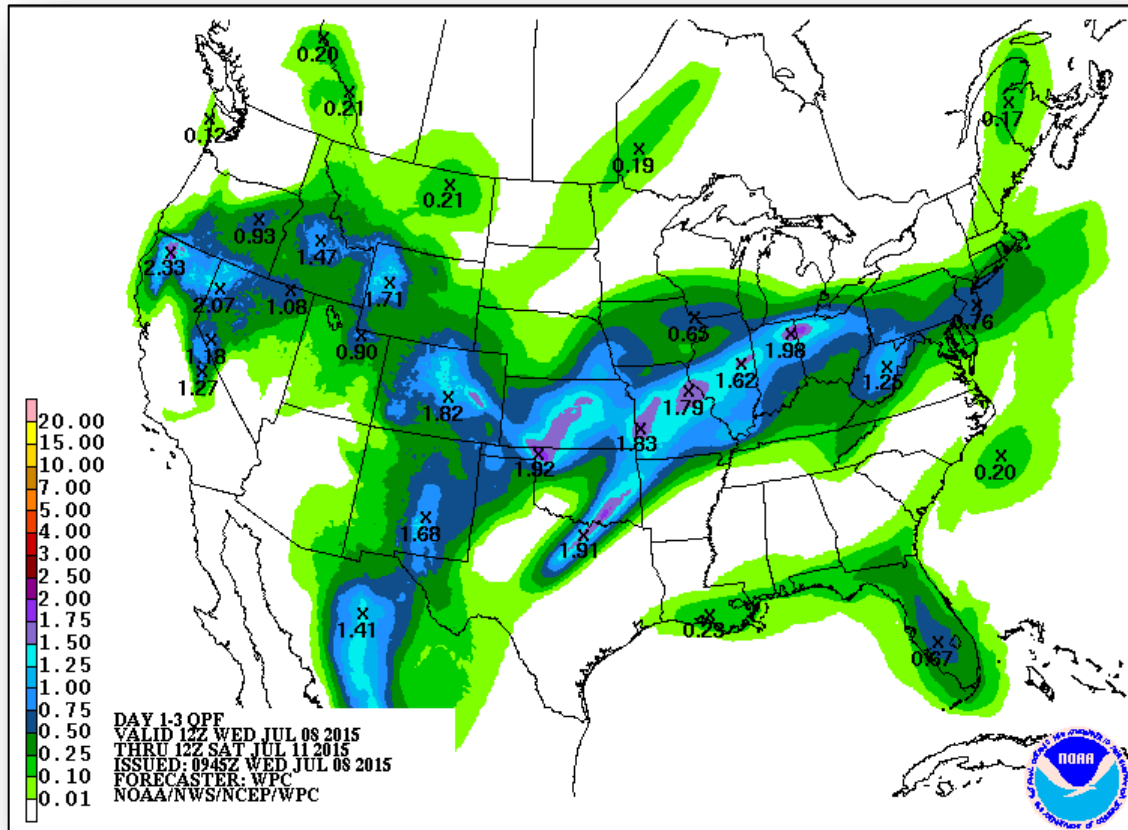
*Tomorrow*

# Active Watches/Warnings





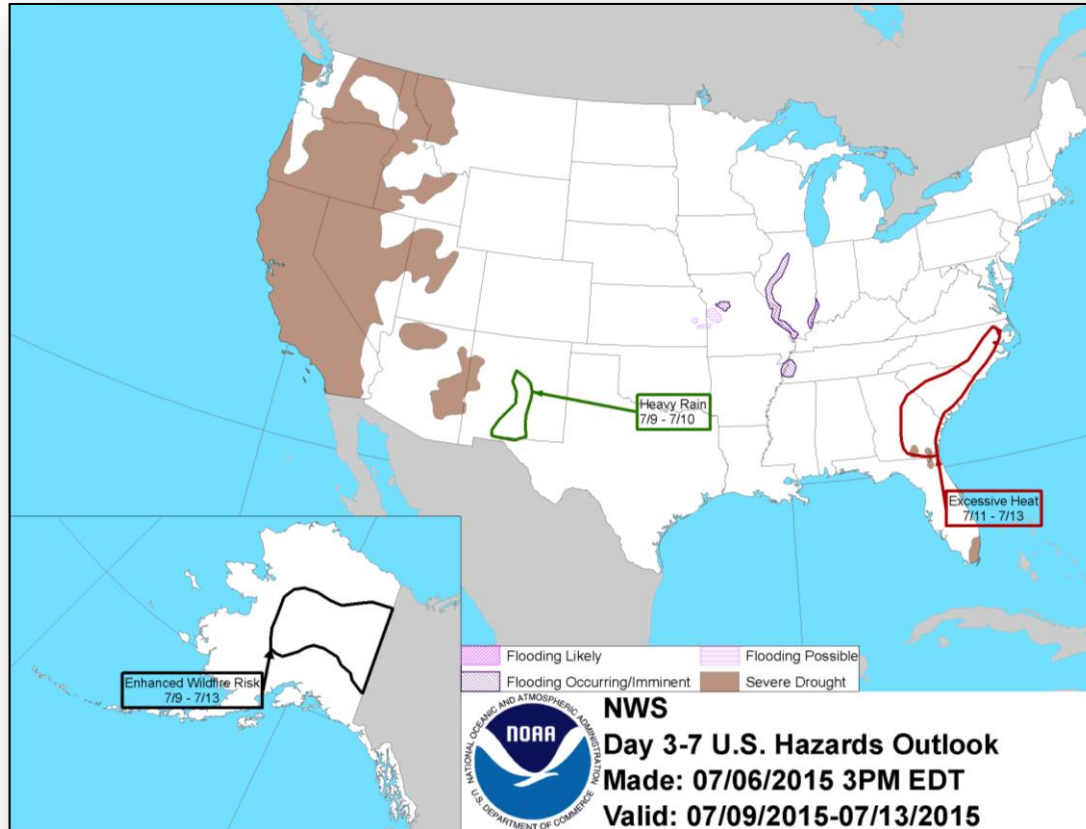
# Precipitation Forecast, 1-3 Day



# River Forecast

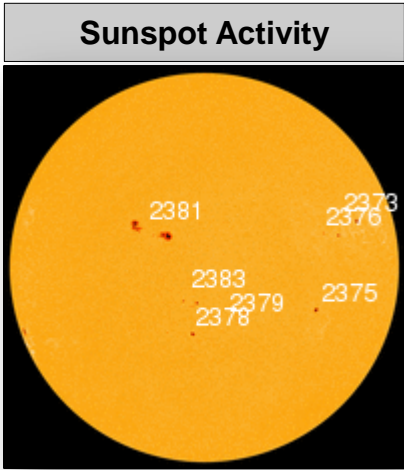
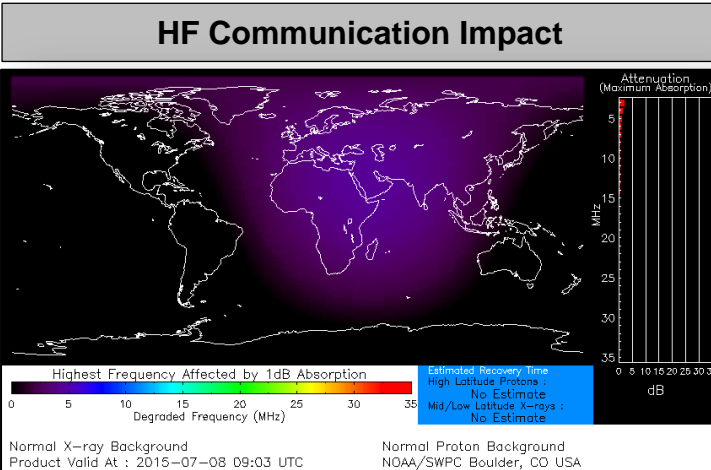


# Hazard Outlook, July 9-13



# Space Weather

None	Past 24 Hours	Current	Next 24 Hours
Space Weather Activity:	None	None	None
• Geomagnetic Storms	None	None	None
• Solar Radiation Storms	None	None	None
• Radio Blackouts	None	None	None



# FEMA Readiness – Deployable Teams /Assets



Deployable Teams/Assets									
Resource	Status	Total	FMC Available		Partially Available	Not Available	Detailed, Deployed, Activated	Comments	Rating Criterion
FCO	Green	35	11	31%	0	1	23		OFDC Readiness: FCO    Green    Yellow    Red Type 1   3+       2       1 Type 2   4+       3       2 Type 3   4         3       2 FDRC     3         2       1
FDRC	Green	9	7	78%	0	0	2		
US&R	Green	28	27	96%	0	1	0	NM-TF1 (Red) – Personnel shortages	<ul style="list-style-type: none"> <li>• Green = Available/FMC</li> <li>• Yellow = Available/PMC</li> <li>• Red = Out-of-Service</li> <li>• Blue = Assigned/Deployed</li> </ul>
National IMAT	Green	3	3	100%	0	0	0	Elements of IMAT East-2 returned from deployment	<ul style="list-style-type: none"> <li>• Green: 3 avail</li> <li>• Yellow: 1-2 avail</li> <li>• Red: 0 avail (<i>Individual N-IMAT red if 50% of Section Chiefs and/or Team Leader is unavailable for deployment.</i>)</li> </ul>
Regional IMAT	Yellow	13	4	31%	1	4	4	<b>Deployed (Blue):</b> RII (Team A) to TX supporting FEMA-4223-DR-TX RV to RVI supporting severe weather/flooding RVI (Team 1) to TX & personnel to OK RIX (Team 2) demobilizing from Guam <b>Partially Available (Yellow):</b> RX IMAT returned from Alaska <b>Not Mission Capable (Red):</b> <u>Personnel shortages/staff adjustments</u> R1 (Team 1); RIV (Team 3); RVI (Team 2); RIX (Team 1)	<ul style="list-style-type: none"> <li>• Green: 7 or more avail</li> <li>• Yellow: 4 - 6 teams available</li> <li>• Red: &gt; 8 teams deployed/unavailable</li> </ul> R-IMAT also red if TL Ops/Log Chief is unavailable & has no qualified replacement
MCOV	Red	60	34	57%	0	6	20	16 units in TX 4 units in OK	<ul style="list-style-type: none"> <li>• Green = 80 – 100% avail</li> <li>• Yellow = 60 – 79% avail</li> <li>• Red = 59% or below avail</li> <li>• Readiness remains 95%</li> </ul>

# FEMA Readiness – National/Regional Teams



National/Regional Teams									
Resource	Status	Total	FMC Available		Partially Available	Not Available	Status	Comments	Rating Criterion
NWC		5	5	100%	0	0	Not Activated		<ul style="list-style-type: none"> <li>• Green = FMC</li> <li>• Yellow = PMC</li> <li>• Red = NMC</li> </ul>
NRCC		2	344	89%	0	44	Not Activated		
HLT		1	N/A	N/A	0	0	Activated		
DEST							Not Activated		
RRCCs		10	10	100%	0	0	Not Activated		
RWCs/MOCs		10	10	100%	0	0	Not Activated		



# FEMA

**FEMA's mission is to support our citizens and first responders to ensure that as a nation we work together to build, sustain, and improve our capability to prepare for, protect against, respond to, recover from, and mitigate all hazards.**