

The Disaster Center is dedicated to the idea that disaster mitigation is cost effective and individuals pursuing their own interest are the greatest potential force for disaster reduction.

Please consider making a small donation to the Disaster Center



When disaster mitigation is cost effective, we are on the road to bringing disasters to an end.



# **FEMA**

## **Daily Operations Briefing**

**Monday, August 1, 2016**

**8:30 a.m. EDT**

# Significant Activity: July 29 – August 1



**Significant Events:** None

**Tropical Activity:**

- Atlantic – Disturbance 1 (Invest 97L) (High - 80%)
- Eastern Pacific – Tropical Storm Howard; Disturbance 1 (Low - 30%)
- Central Pacific – No tropical cyclones expected through Tuesday evening
- Western Pacific – No activity threatening U.S. interests

**Significant Weather:**

- Severe thunderstorms possible – Northern/Central Plains and Upper/Middle Mississippi valleys
- Flash flooding possible – Northern Plains/Upper Mississippi Valley to Ohio Valley; Southwest/Central Great Basin to Southern Rockies
- Rain and thunderstorms – Central Great Basin to Southwest to Southern Plains, Northern Plains to Northeast, Central Rockies to Mid-Atlantic, Lower Mississippi Valley and Southeast
- Elevated fire weather – CA, NV, UT, OR, ID & WY
- Red Flag Warnings – CA, OR, UT & WY
- Space Weather – No space weather storms observed past 24 hours; no storms predicted next 24 hours

**Earthquake Activity:** No significant activity

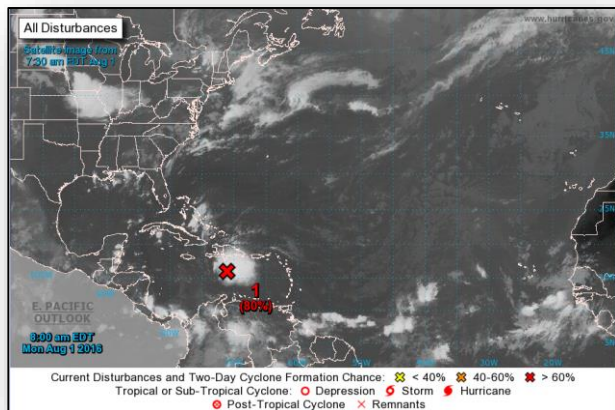
**Wildfire Activity:**

- CA – Soberanes Fire; Goose Fire
- NV – Virginia Mountains Complex Fire; Rock Fire (FINAL)
- WY – Lava Mountain Fire; Tokewanna Fire
- WA – South Ward Gap Fire

**Declaration Activity:**

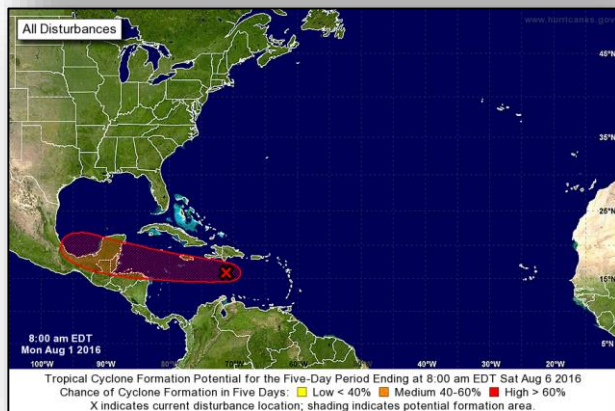
- FMAGs approved - Virginia Mountains Complex fire, NV; South Ward Gap Fire, WA

# Tropical Outlook - Atlantic

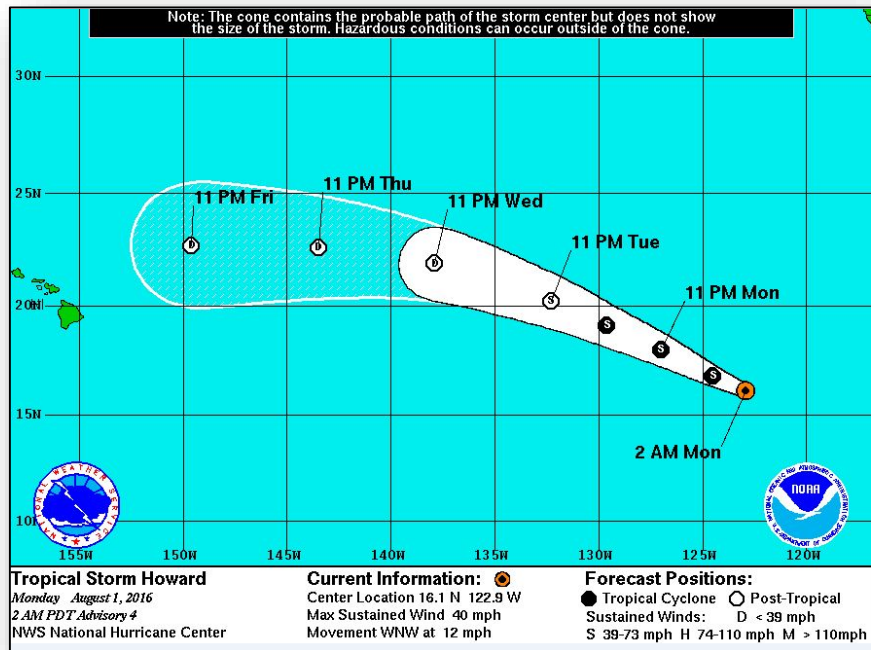


## Disturbance 1 – Invest 97L (As of 8:00 a.m. EDT)

- Located 350 miles ESE of Kingston, Jamaica
- Moving W at 20-25 mph
- Thunderstorm activity associated with a strong and fast-moving tropical wave
- A tropical storm likely to form later today or tonight
- Formation chance through 48 hours: High (80%)
- Formation chance through 5 days: High (90%)



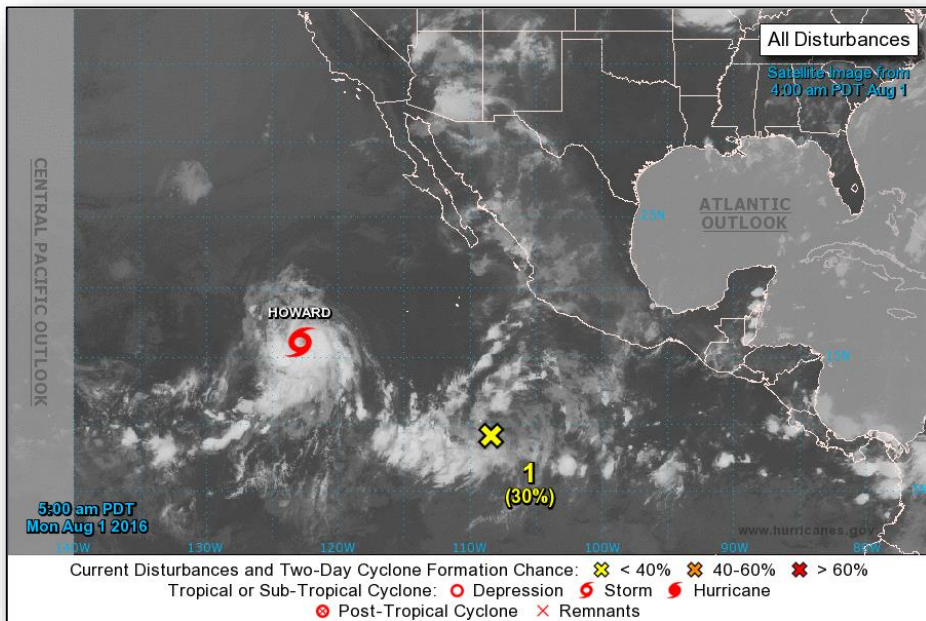
# Tropical Outlook - Eastern Pacific



## Tropical Storm Howard (Advisory #4 As of 5:00 a.m. EDT)

- Located 965 miles WSW of southern tip of Baja California, Mexico
- Moving WNW at 12 mph
- This general motion expected to continue next couple of days
- Maximum sustained winds 40 mph
- Some additional strengthening forecast today and Tues morning
- Gradual weakening expected to begin by Tues night and Wed
- Tropical storm force winds extend 45 miles

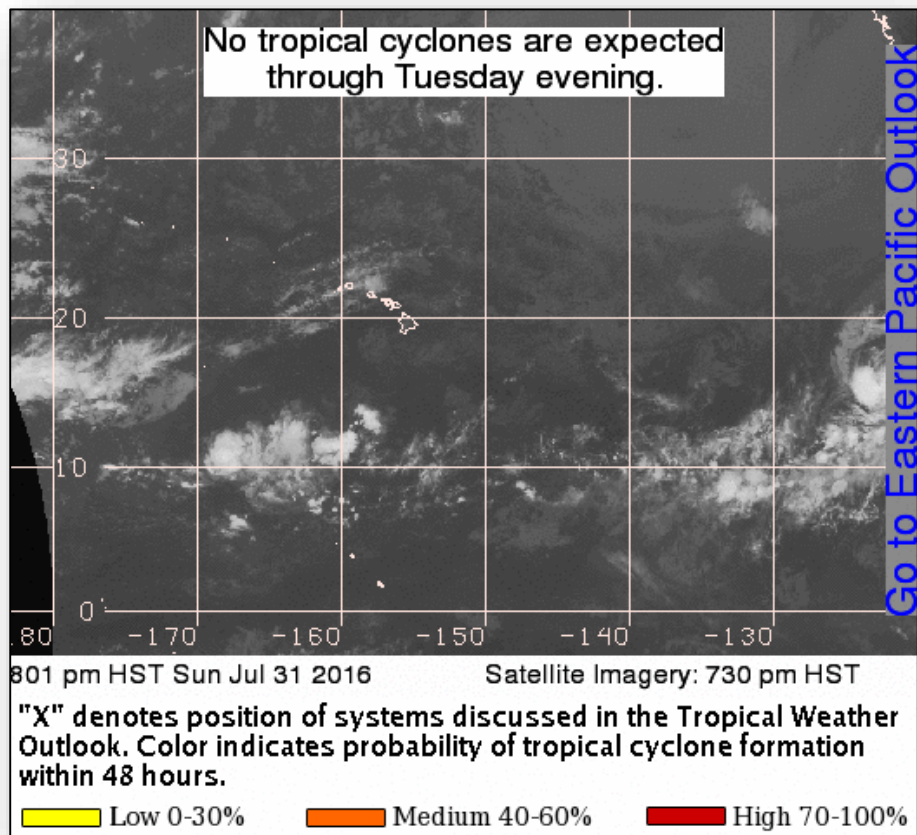
# Tropical Outlook - Eastern Pacific



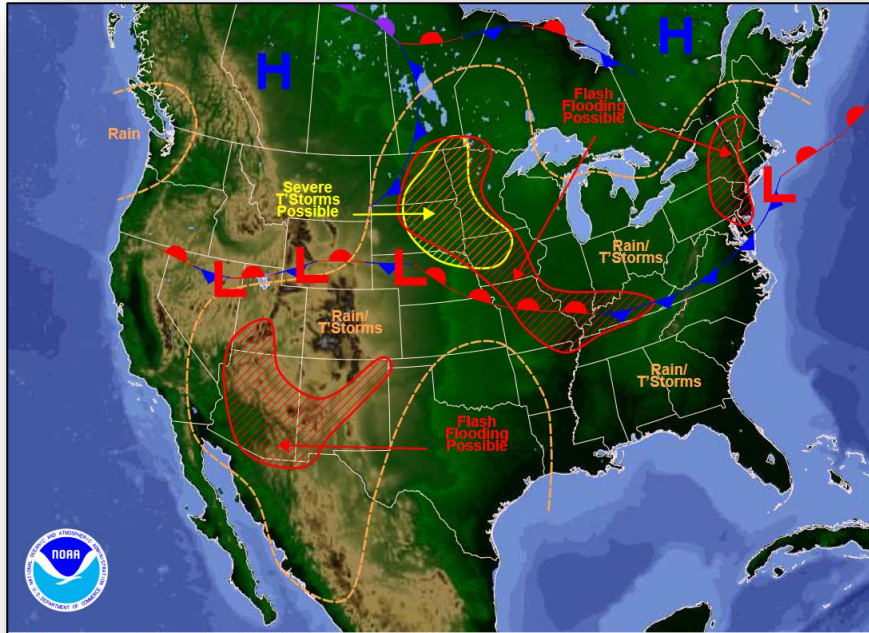
## Disturbance 1 (As of 8:00 a.m. EDT)

- Located several hundred miles SSW of southern tip of Baja California peninsula, Mexico
- Moving WNW at 10-15 mph
- Conditions expected to be conducive for gradual development
- Tropical depression likely to form later this week
- Formation chance through 48 hours: Low (30%)
- Formation chance through 5 days: High (80%)

# Tropical Outlook - Central Pacific

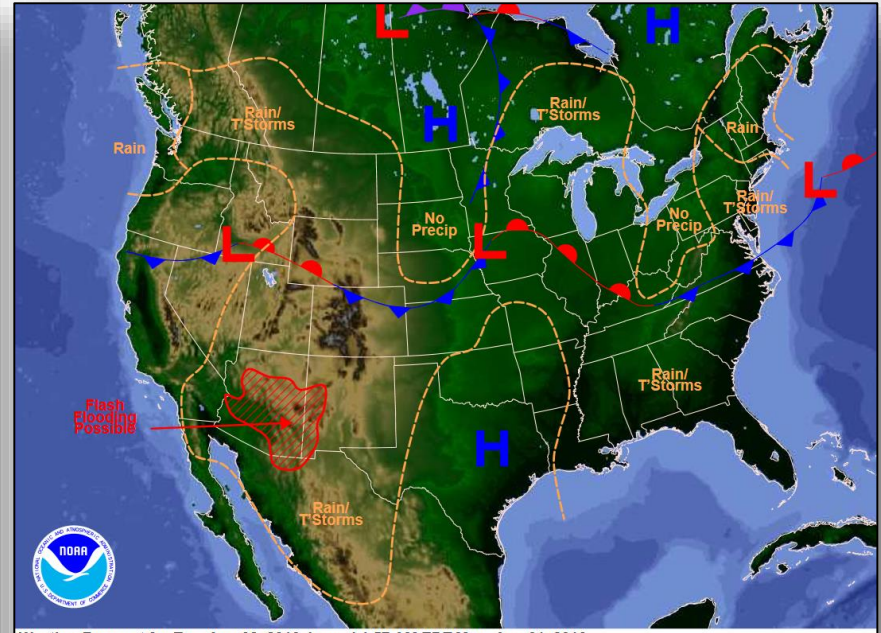


# National Weather Forecast



Weather Forecast for Mon, Aug 01, 2016, issued 4:46 AM EDT  
DOC/NOAA/NWS/NCEP/Weather Prediction Center  
Prepared by McCreynolds based on WPC, SPC and NHC forecasts

*Today*



Weather Forecast for Tue, Aug 02, 2016, issued 4:57 AM EDT Mon, Aug 01, 2016  
DOC/NOAA/NWS/NCEP/Weather Prediction Center  
Prepared by McCreynolds based on WPC, SPC and NHC forecasts

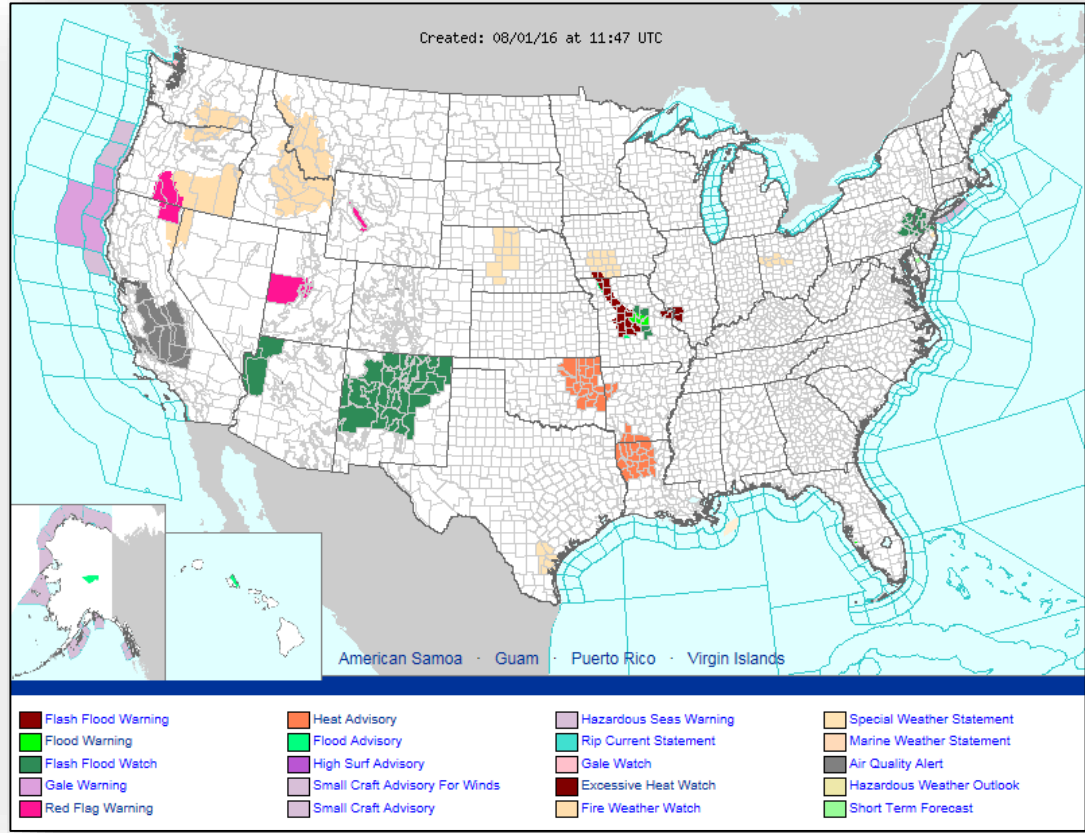
*Tomorrow*



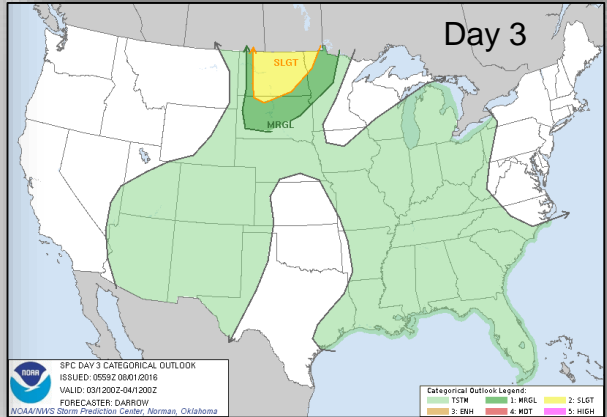
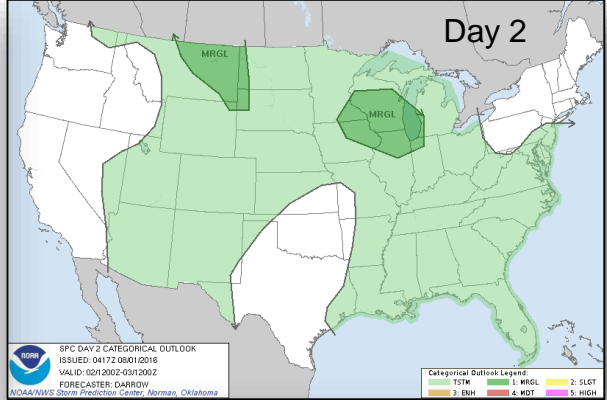
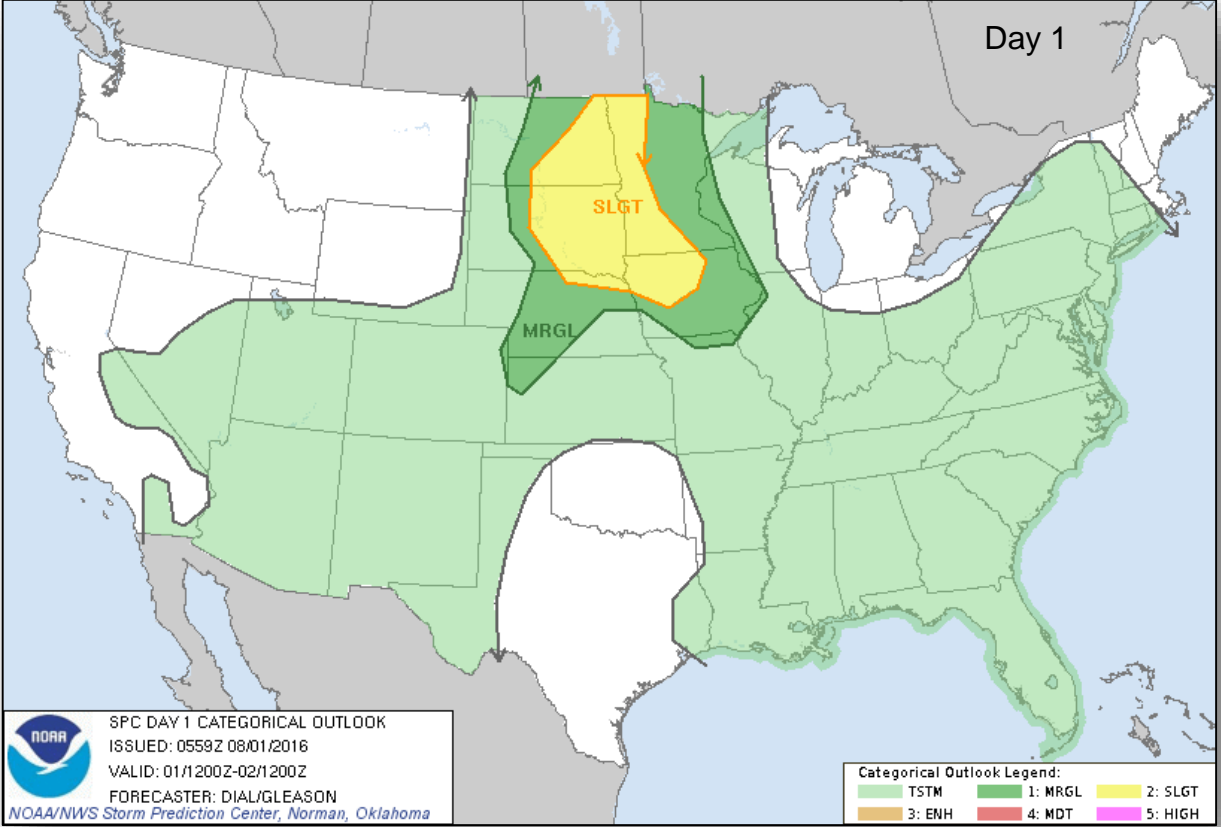
# Active Watches & Warnings



FEMA



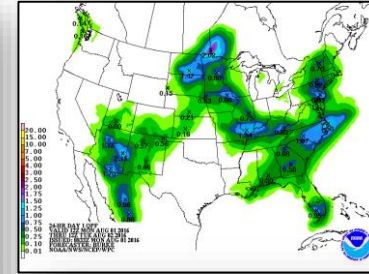
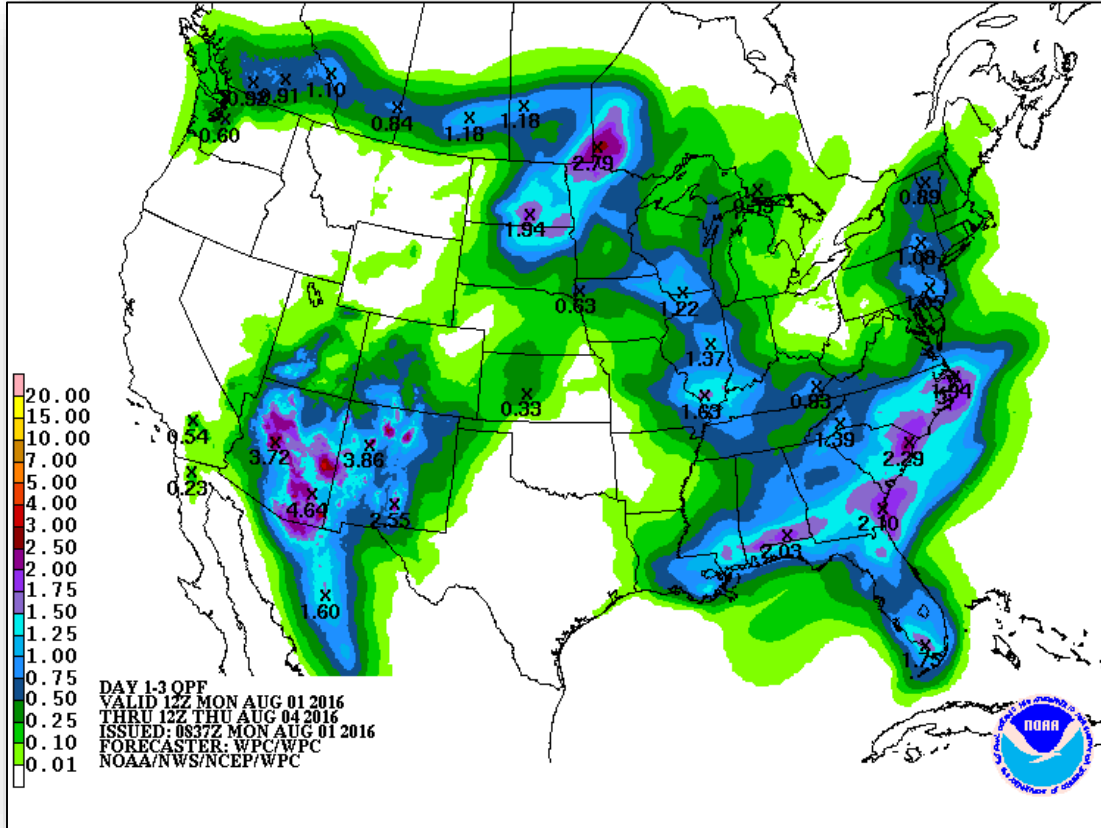
# Severe Weather Outlook: Days 1-3



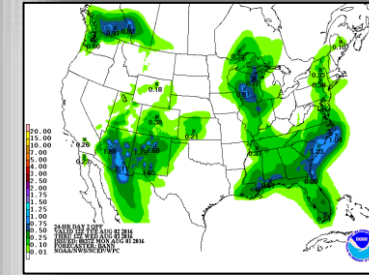
# Precipitation Forecast: Days 1-3



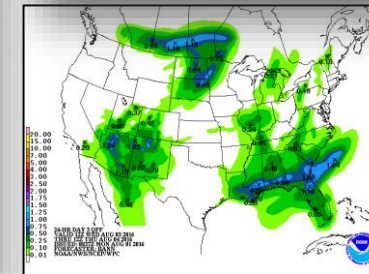
FEMA



Day 1

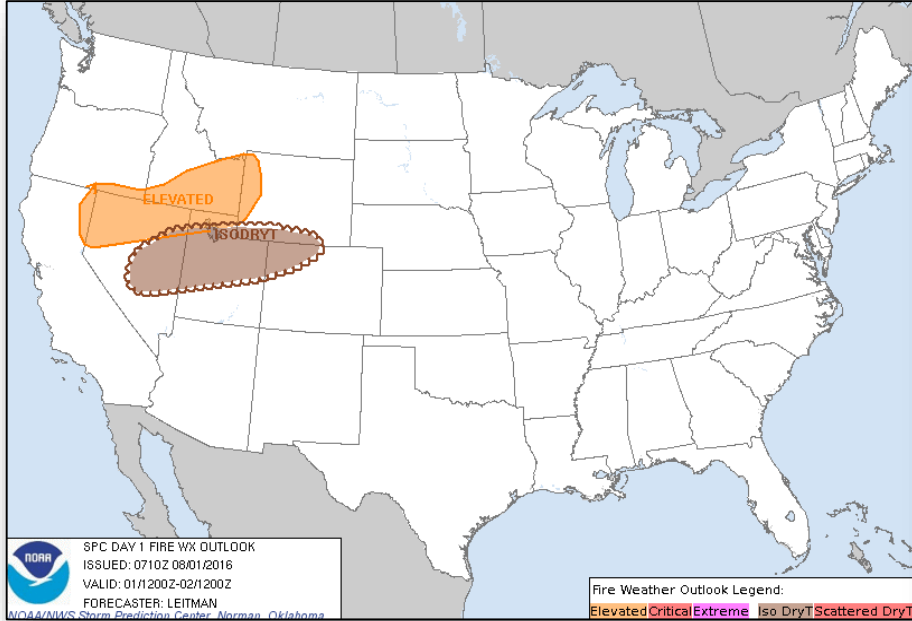


Day 2

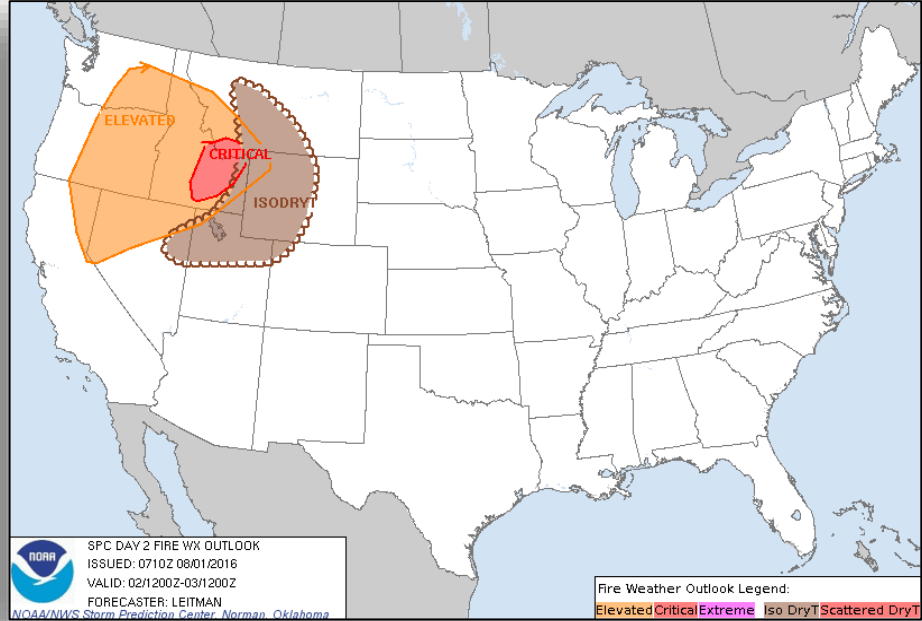


Day 3

# Fire Weather Outlook

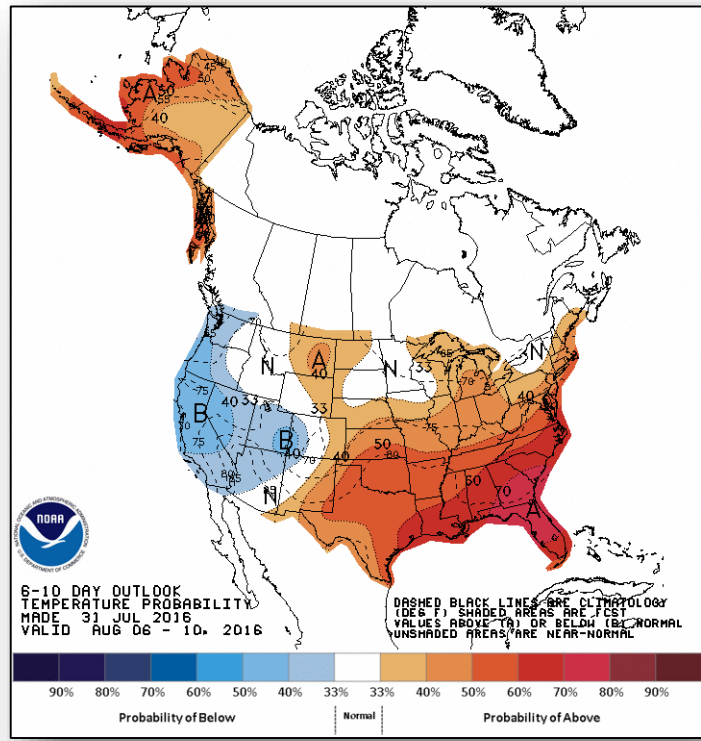


Day 1

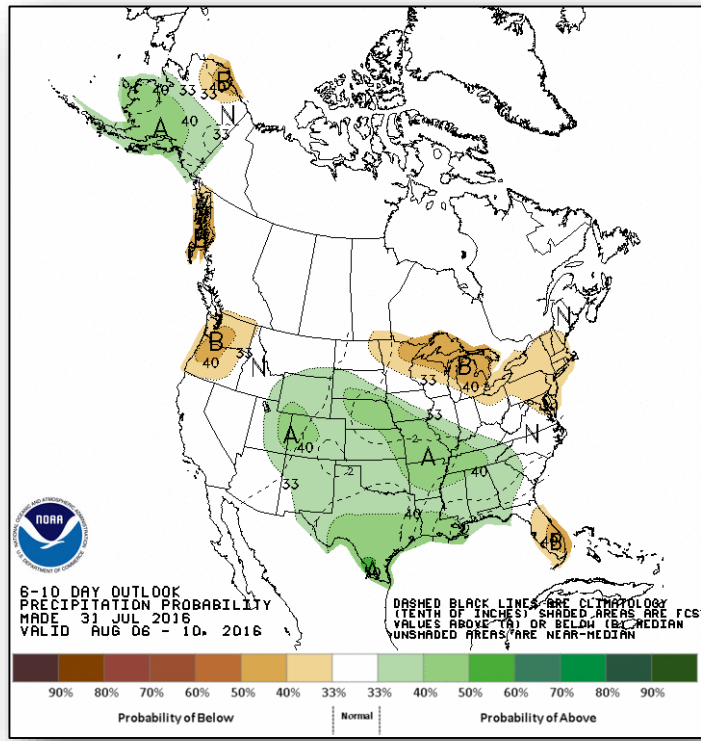


Day 2

# 6 - 10 Day Outlooks



**6 - 10 Day Temperature Probability**



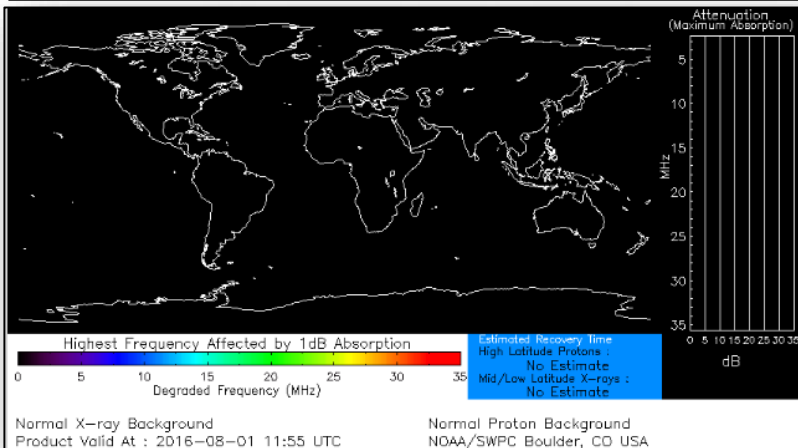
**6 - 10 Day Precipitation Probability**



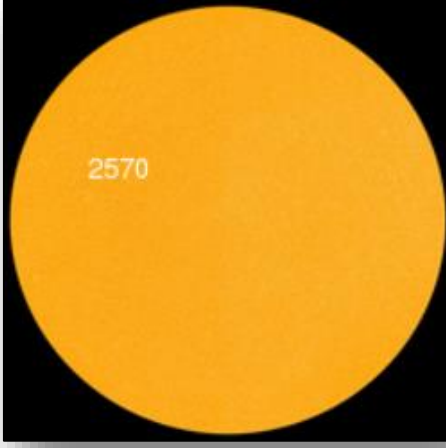
# Space Weather

	Past 24 Hours	Current	Next 24 Hours
<b>Space Weather Activity</b>	<b>None</b>	<b>None</b>	<b>None</b>
Geomagnetic Storms	None	None	None
Solar Radiation Storms	None	None	None
Radio Blackouts	None	None	None

## HF Communication Impact



## Sunspot Activity



# Virginia Mountains Complex Fire - NV



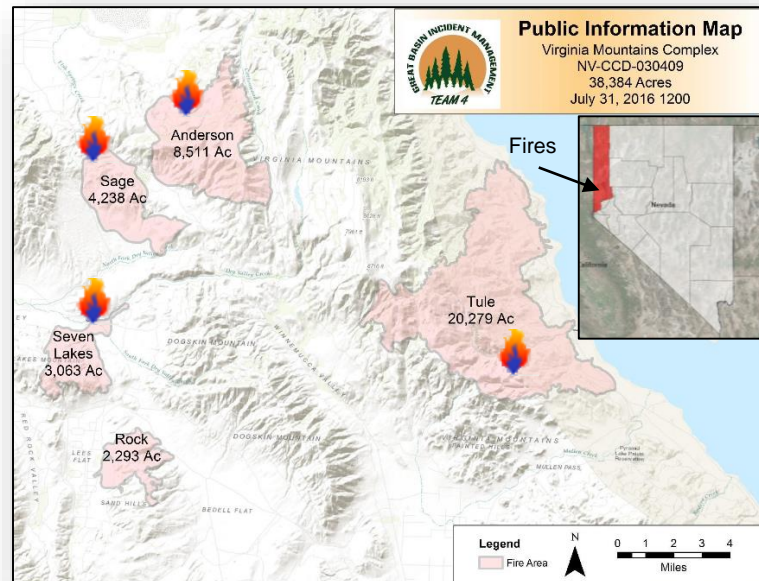
Fire Name	Location	Acres burned	% Contained	Est. Full Containment	FMAP	Structures Lost / Threatened	Fatalities / Injuries
Virginia Mountains Complex Fire	Washoe County	36,091	35%	August 6	FEMA-5141-FM-NV Approved July 31	6 homes / 202 (75 homes)	0 / 0

## Current Situation

- Fire began July 31, 2016 and is burning on federal, state, county, private, and tribal lands, located 35 miles north of Reno
- Complex consists of four fires (Tule, Anderson, Sage, and Seven Lakes); Rock Fire is not part of the complex
- Mandatory evacuations in effect

## Response

- NV EOC at Partial Activation (for drought)
- Region IX RWC remains at Watch/Steady State



 - Signifies fires encompassed in the Complex Fire

# South Ward Gap Fire - WA



Fire Name	Location	Acres burned	% Contained	Est. Full Containment	FMAP	Structures Lost / Threatened	Fatalities / Injuries
South Ward Gap	Benton County	1,000	0%	None	FEMA-5142-FM-WA Approved August 1	0 / 50 homes	0 / 0

### Current Situation

- Fire began July 31, 2016 and is burning south of Prosser, WA (pop. 5,800)
- Mandatory evacuations in effect for 200 people
- 1 shelter open with no occupants *(ARC Midnight Shelter Count as of 6:22 am EDT)*
- No injuries or fatalities

### Response

- WA EOC at Partial Activation (for wildfires)
- Region X RWC remains at Watch/Steady State





# Wildfire Summary



Fire Name (County)	FMA #	Acres burned	% Contained	Evacuations (Residents)	Structures Threatened	Structures Damaged / Destroyed	Fatalities / Injuries
<b>Wyoming (2)</b>							
Lava Mountain Fire (Fremont County)	FEMA-5136-FM-WY	13,203 (+479)	40% (+35)	Mandatory	12,223 (343 homes)	2 (+1) / 0	0 / 2
Tokewanna Fire (Uinta County)	FEMA-5139-FM-WY	1,313 (+61)	24% (+19)	Mandatory	148 (131 homes) (+91)	0 / 8	0 / 0
<b>California (2)</b>							
Soberanes Fire (Monterey County)	FEMA-5137-FM-CA	40,000 (+4,460)	18% (+3)	Mandatory	2,000 homes	5 (3 homes) / 68 (57 homes)	1 / 1 (+1)
Goose Fire (Fresno County)	FEMA-5140-FM-CA	1,800 (+1,300)	5% (+5)	Mandatory	200 homes	0 / 0	0 / 0
<b>Nevada (1)</b>							
Rock Fire (FINAL) (Washoe County)	FEMA-5138-FM-NV	2,293 (+793)	80% (+30)	Lifted	0	0 / 0	0 / 0

# Joint Preliminary Damage Assessments



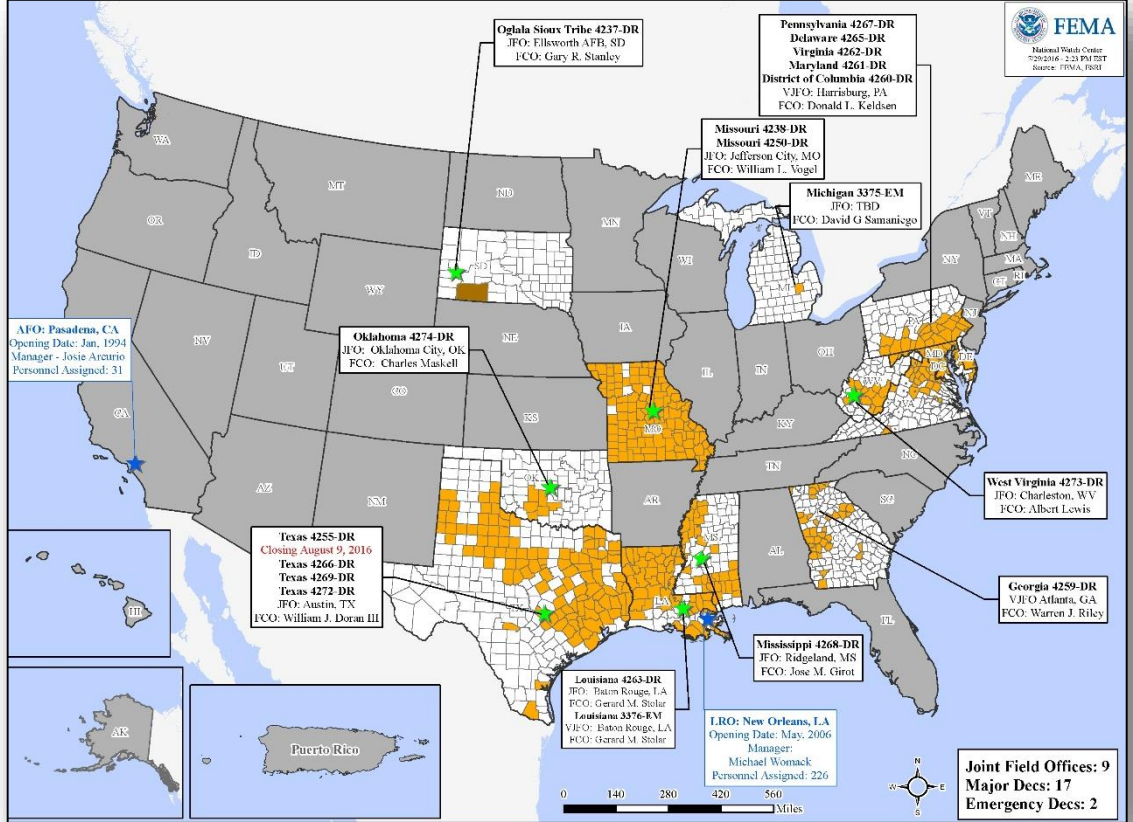
Region	State / Location	Event	IA/PA	Number of Counties		Start – End
				Requested	Complete	
V	WI	Severe Storms & Flooding July 11-12, 2016	PA	8 counties 2 tribes	8 (+3) 2 (+1)	7/25 – 7/29
IV	KY	Severe storms, tornadoes, flooding & strong winds July 3-9, 2016	IA	2	0	8/2 – TBD
			PA	23	0	8/2 – TBD

# Disaster Requests & Declarations



<b>Declaration Requests in Process</b>		<b>Requests APPROVED (since last report)</b>	<b>Requests DENIED (since last report)</b>
<b>2</b>	<b>Date Requested</b>	<b>0</b>	<b>0</b>
MT – DR Tornado	July 20, 2016		
KS – DR Severe Storms, Tornadoes, and Flooding	July 21, 2016		

# Open Field Offices as of August 1, 2016



# FEMA Readiness - Deployable Teams & Assets



Deployable Teams & Assets									
Resource	Status	Total	FMC Available		Partially Available	Not Available	Detailed, Deployed, Activated	Comments	Rating Criterion
FCO		37	11	30%	0	3	23		OFDC Readiness: FCO Green Yellow Red Type 1 3+ 2 1 Type 2 4+ 3 2 Type 3 4 3 2 FDRC 3 2 1
FDRC		10	4	40%	0	0	6		
US&R		28	26	93%	1	0	1	NJ-TF1 Partially Mission Capable PA-TF1 returned to Fully Mission Capable	<ul style="list-style-type: none"> <li>Green = Available/FMC</li> <li>Yellow = Available/PMC</li> <li>Red = Out-of-Service</li> <li>Blue = Assigned/Deployed</li> </ul>
National IMAT		3	3	100%	0	0	0	East 2: Primary (On Call)	<ul style="list-style-type: none"> <li>Green: 3 available</li> <li>Yellow: 1-2 available</li> <li>Red: 0 avail (<i>Individual N-IMAT red if 50% of Section Chiefs and/or Team Leader is unavailable for deployment.</i>)</li> </ul>
Regional IMAT		13	10	77%	0	0	3	<b>Deployed:</b> Region I: WV (4273-WV) Region III: WV (4273-WV) Region VII: Reconstituting (FMC – August 7, 2016)	<ul style="list-style-type: none"> <li>Green: &gt;6 teams available</li> <li>Yellow: 4 - 6 teams available</li> <li>Red: &lt; 4 teams available</li> </ul> <i>R-IMAT also red if TL Ops/Log Chief is unavailable &amp; has no qualified replacement</i>
MERS Teams		18	16	89%	0	0	2	<b>Deployed:</b> Denton: 1 Team to TX (4272-TX) Maynard: 1 Team to VT (EX Vigilant Guard 16)	<ul style="list-style-type: none"> <li>Green = &gt;66% available</li> <li>Yellow = 33% to 66% available</li> <li>Red = &lt;33% available</li> </ul>

# FEMA Readiness - National & Regional Teams



National/Regional Teams									
Resource	Status	Total	FMC Available		Partially Available	Not Available	Status	Comments	Rating Criterion
NWC		5	5	100%	0	0	Not Activated		<ul style="list-style-type: none"> <li>• Green = FMC</li> <li>• Yellow = PMC</li> <li>• Red = NMC</li> </ul>
NRCC		2	2	100%	0	0	Not Activated		
HLT		1	1	100%	0	0	Activated		
DEST							Not Activated		
RRCCs		10	10	100%	0	0	Not Activated		
RWCs/MOCs		10	10	100%	0	0	Not Activated		



# FEMA

**FEMA's mission is to support our citizens and first responders to ensure that as a nation we work together to build, sustain, and improve our capability to prepare for, protect against, respond to, recover from, and mitigate all hazards.**