

The Disaster Center is dedicated to the idea that disaster mitigation is cost effective and individuals pursuing their own interest are the greatest potential force for disaster reduction.

Please consider making a small donation to the Disaster Center



When disaster mitigation is cost effective, we are on the road to bringing disasters to an end.



FEMA

Daily Operations Briefing

Thursday, August 3, 2017

8:30 a.m. EDT

Significant Activity – August 2-3



FEMA

Significant Events: Train Derailment - PA

Tropical Activity:

- Atlantic – Disturbance 1 – Low (30%)
- Eastern Pacific – Disturbance 1 – Low (20%)
- Central Pacific – No tropical cyclones expected next 48 hours
- Western Pacific – No activity affecting U.S. interests

Significant Weather:

- Severe thunderstorms possible – Upper/Middle Mississippi valleys to Great Lakes and Ohio Valley
- Flash flooding possible – southern CA to Southwest; Southern Rockies to Southern Plains; Gulf Coast to Southeast
- Red Flag Warnings – ID, OR, CA & WA
- Space weather:
 - Past 24 hours: None observed
 - Next 24 hours: None predicted

Earthquake Activity: No significant activity

Declaration Activity: Major Disaster Declaration approved for MI

Train Derailment – Pennsylvania



FEMA

Situation

On August 2, 32 cars of a 182 car CSX train derailed in Hyndman borough, PA (Bedford County) (pop. 875), 75 miles southeast of Pittsburgh, PA. 16 cars contained either liquid propane gas, phosphoric acid residue, molten sulfur, or elevated temperature asphalt; multiple rail cars continue to burn.

Impacts

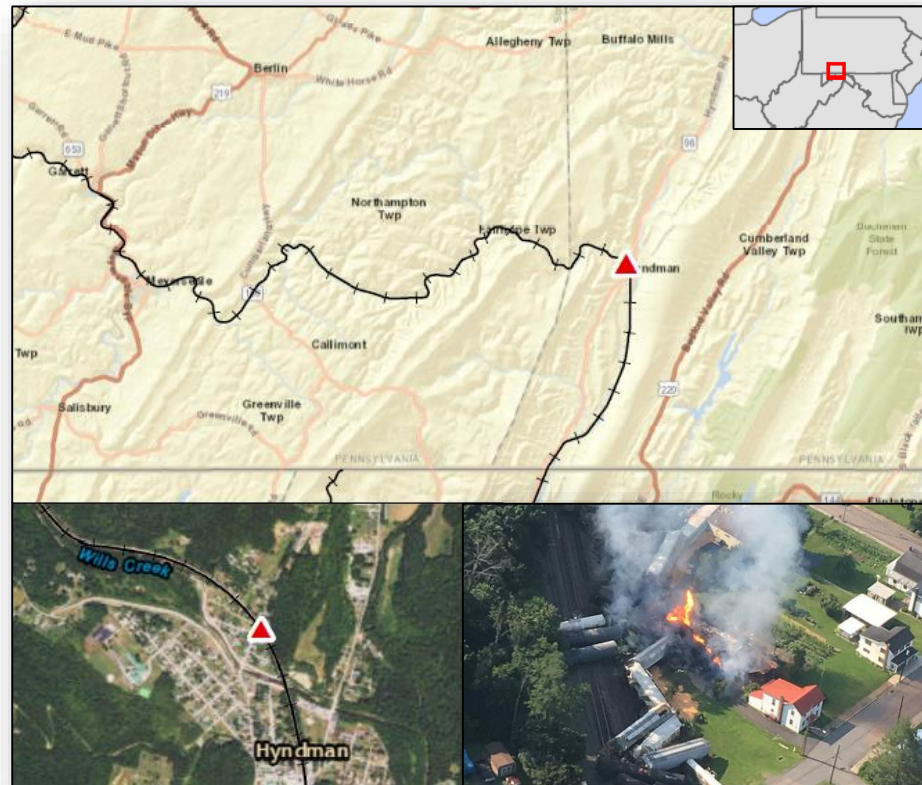
- No fatalities or injuries
- 1 mile evacuation zone - 1,056 people evacuated; shelter closed; ARC and CSX arranged hotel lodging for evacuees
- Amtrak's Capitol Limited service suspended (DC to Pittsburgh)
- Temporary flight restrictions remain up to 5,000 feet and 3 miles wide
- All roads entering the borough closed to non-emergency response vehicles

State/Local Response

- PA EOC at Partial Activation
- Keystone IMT, PA IMT, County EMC, and CSX HAZMAT teams are on-scene

Federal Response

- Interagency Modeling and Atmospheric Assessment Center (IMAAC) completed all modelling requirements and has de-activated
- FEMA Region III RWC at Steady State; LNOs deployed to PA EOC
- FEMA NWC remains at Steady State



Tropical Outlook – Atlantic

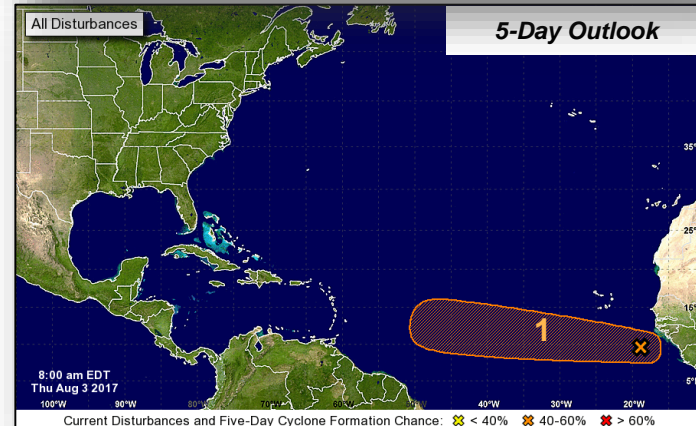
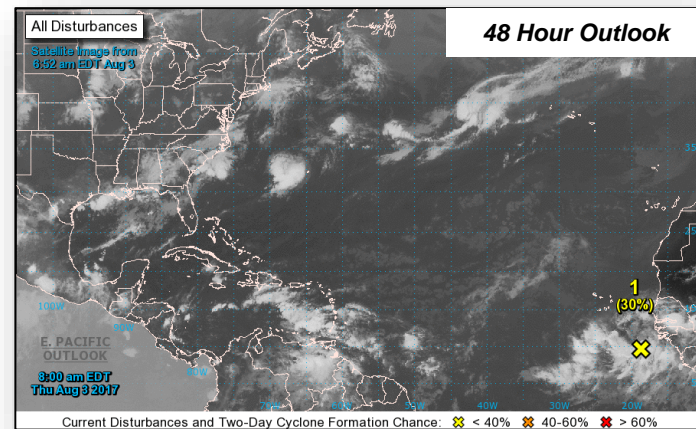


FEMA

Disturbance 1 (as of 8:00 a.m. EDT)

- Located near the west coast of Africa
- Forecast to move W or WNW at 10-15 mph
- Conditions forecast to be conducive for gradual development; tropical depression could form by early next week
- Formation chance through 48 hours: Low (30%)
- Formation chance through 5 days: Medium (60%)

Current advisories and forecasts indicate no threats to the U.S.



Tropical Outlook – Eastern Pacific

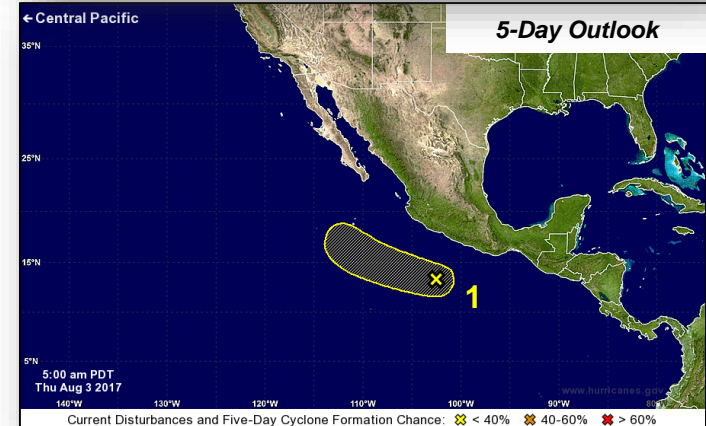
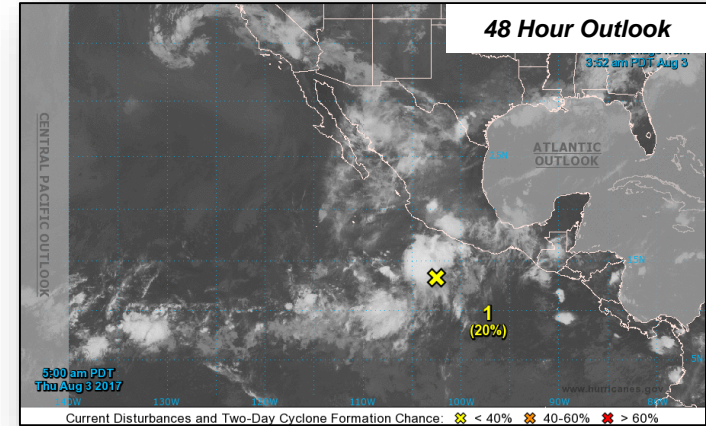


FEMA

Disturbance 1 (as of 8:00 a.m. EDT)

- Located a few hundred miles SSW of Acapulco, Mexico
- Moving WNW at 15 mph
- Conditions forecast to become unfavorable for development by the weekend
- Formation chance through 48 hours: Low (20%)
- Formation chance through 5 days: Low (20%)

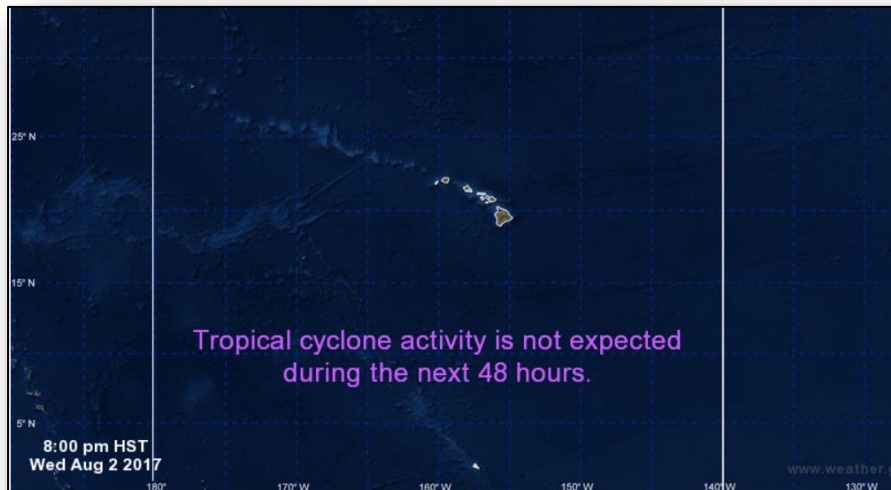
Current advisories and forecasts indicate no threats to the U.S.



Tropical Outlook – Central Pacific



FEMA



48 Hour Outlook

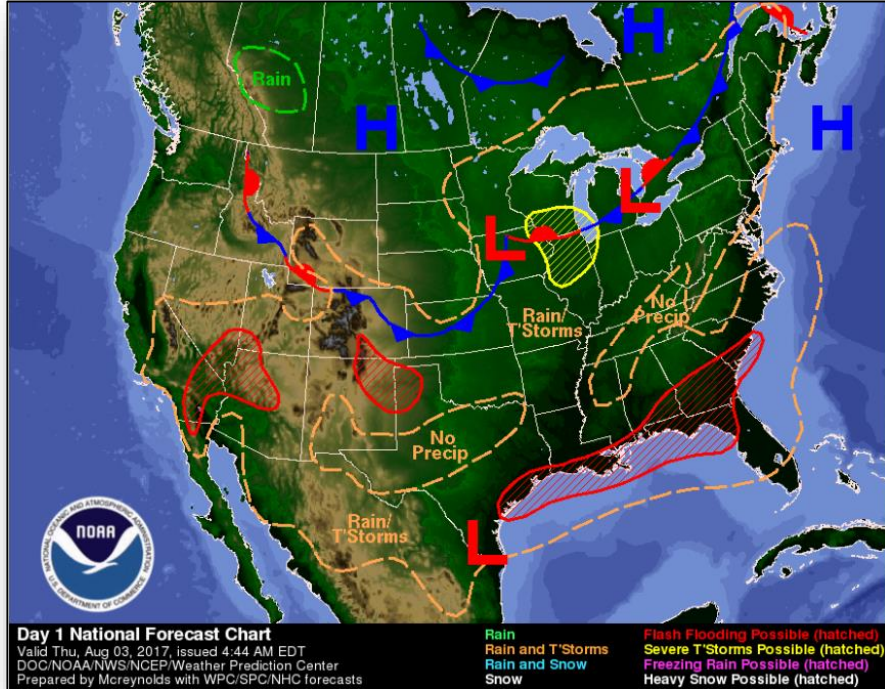


5 Day Outlook

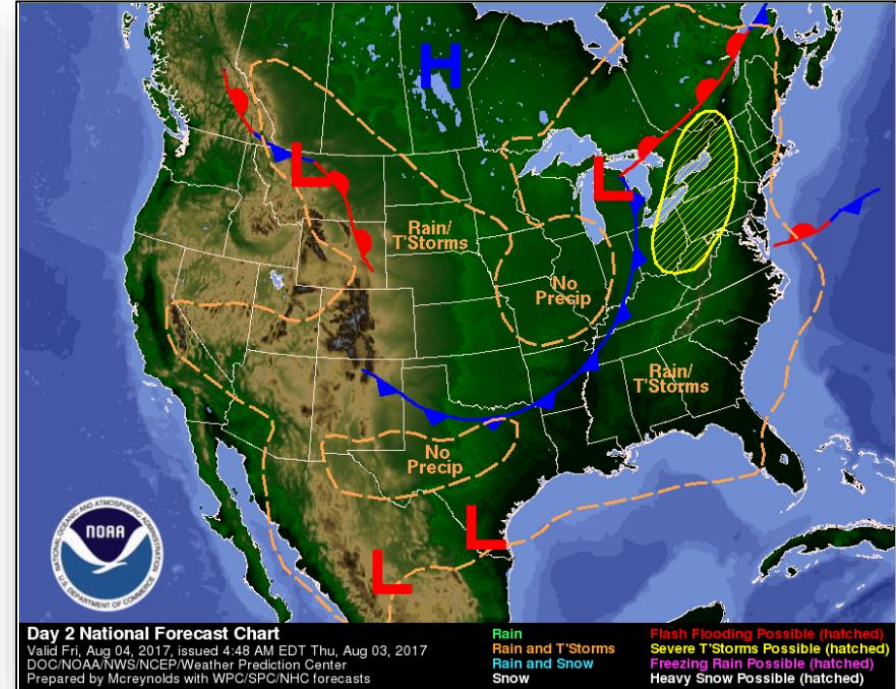
National Weather Forecast



FEMA

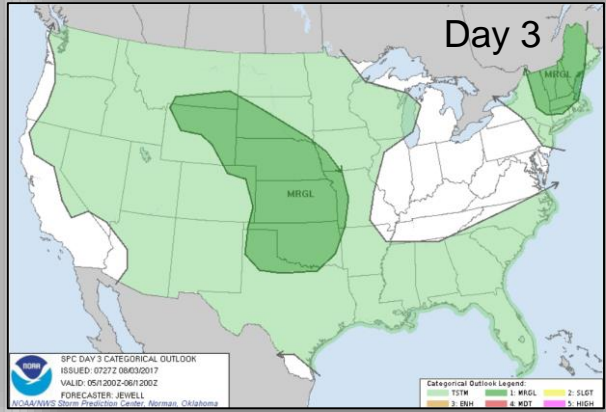
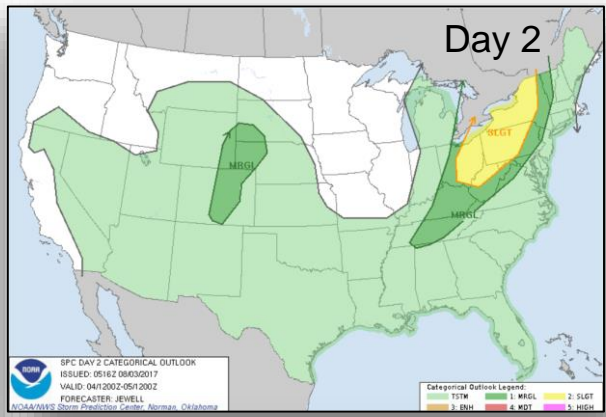
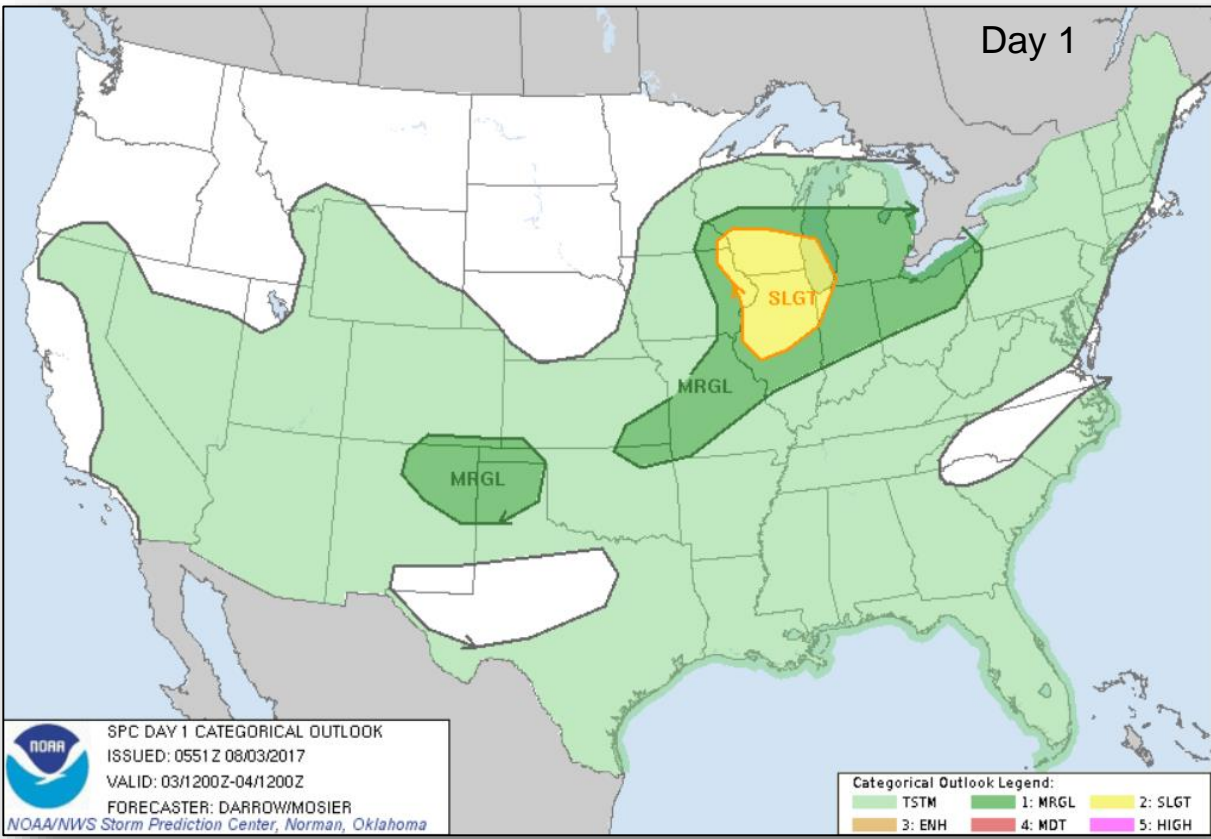


Today



Tomorrow

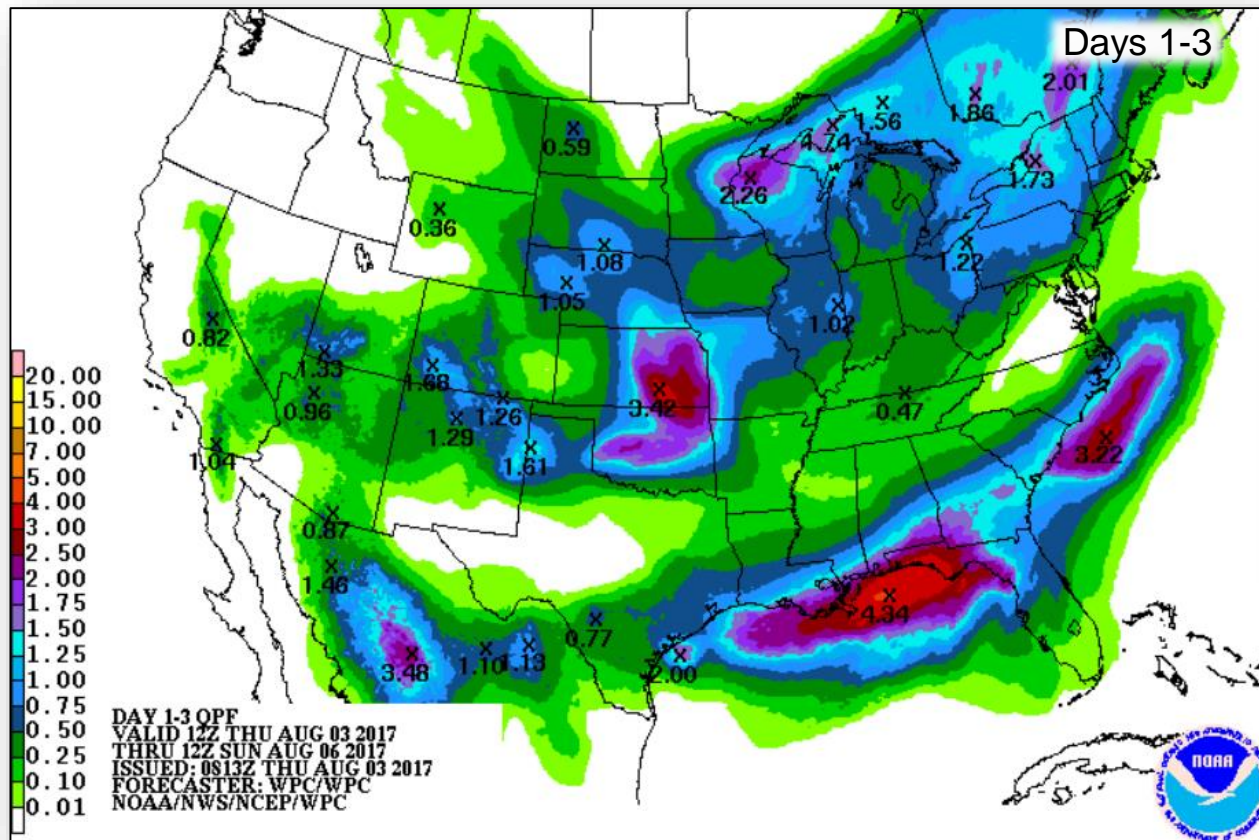
Severe Weather Outlook – Days 1-3



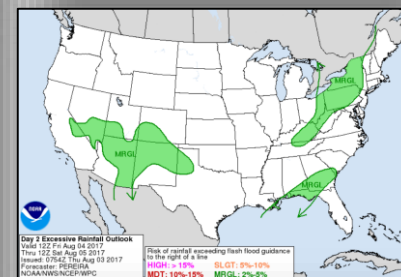
Precipitation Forecast



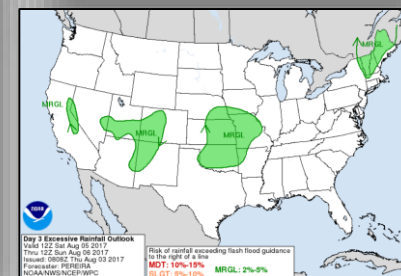
FEMA



Day 1



Day 2

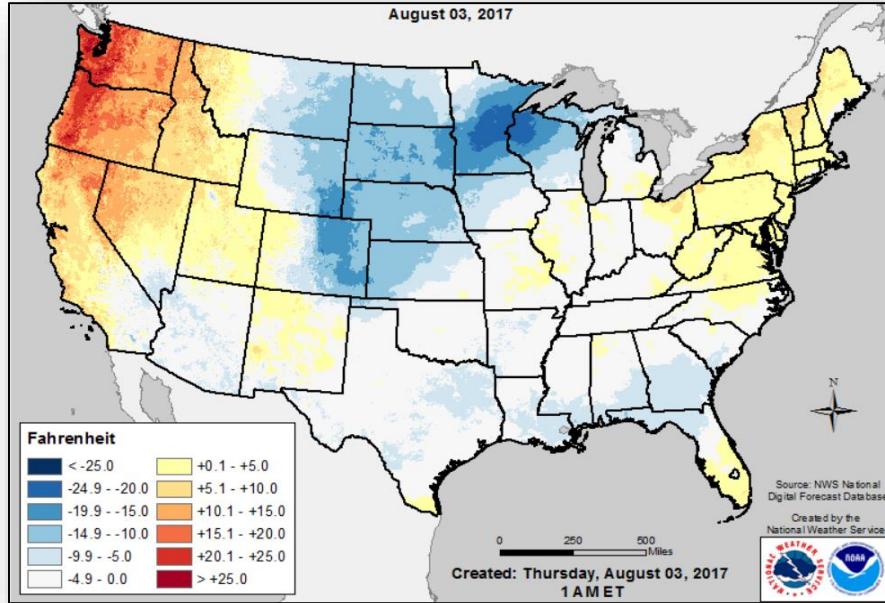


Day 3

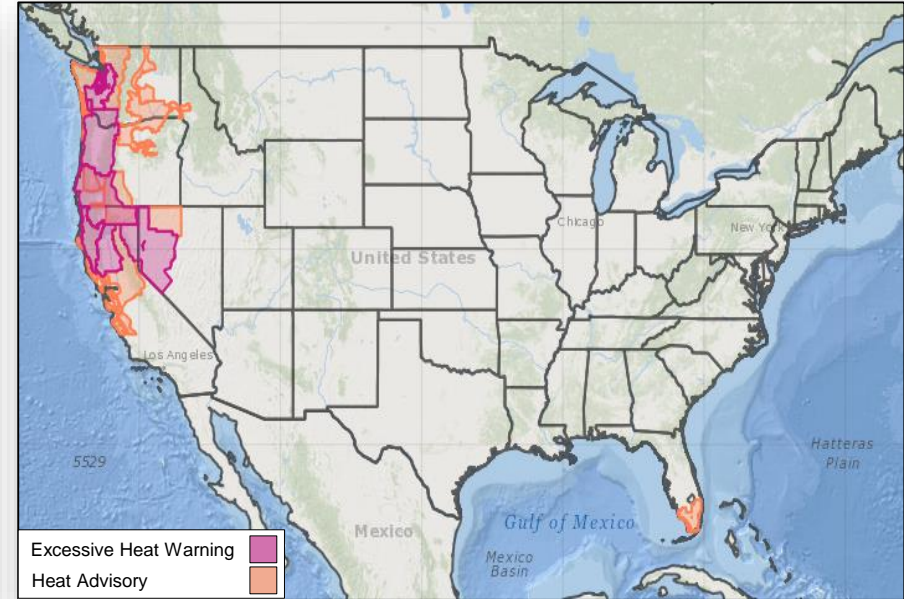
Excessive Heat



FEMA



***National High Temperature
Departure from Normal Forecast***

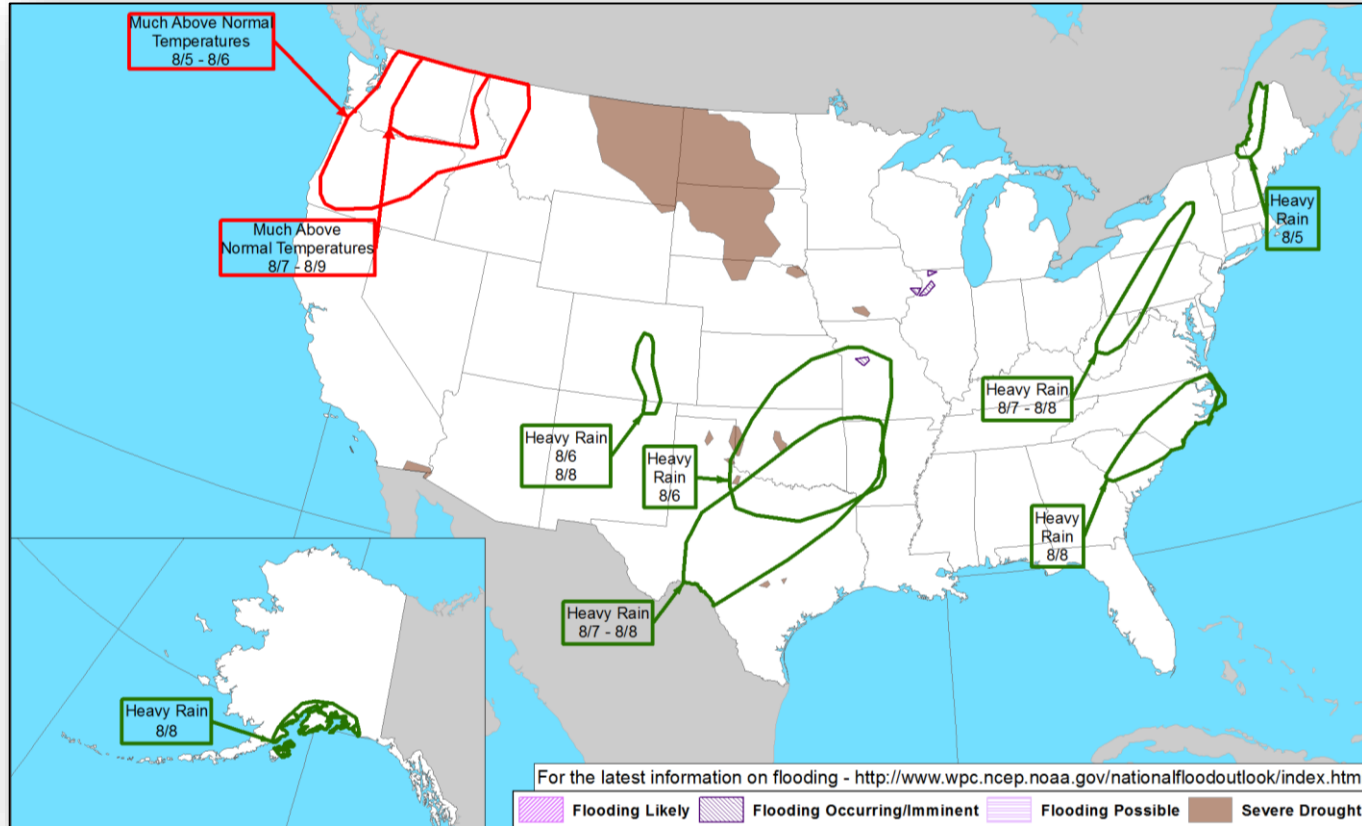


Watches, Warnings, and Advisories

Hazards Outlook – Aug 5-9



FEMA

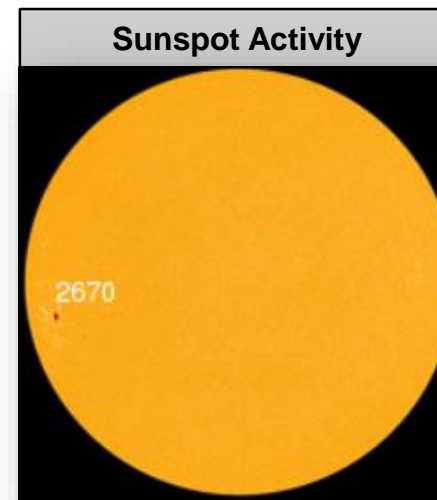
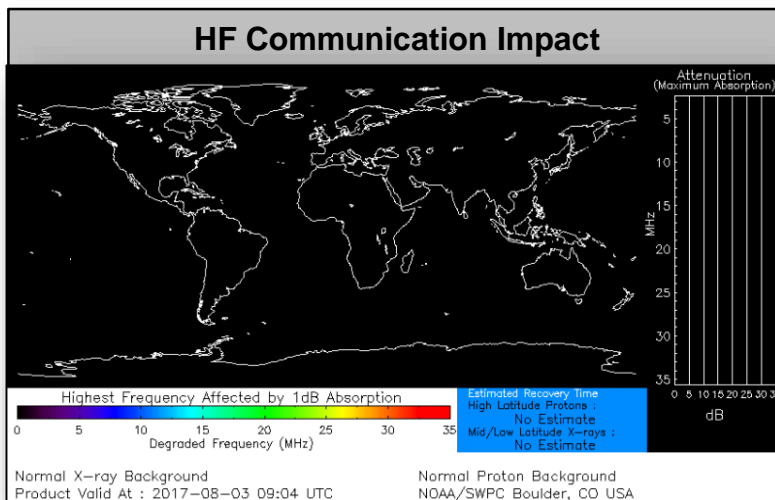


Space Weather



FEMA

	Space Weather Activity	Geomagnetic Storms	Solar Radiation	Radio Blackouts
Past 24 Hours	None	None	None	None
Next 24 Hours	None	None	None	None
For further information on NOAA Space Weather Scales refer to http://www.swpc.noaa.gov/noaa-scales-explanation				



Joint Preliminary Damage Assessments



FEMA

Region	State / Location	Event	IA/PA	Number of Counties		Start – End
				Requested	Completed	
II	NY	Lake Ontario Flooding May 2, 2017- continuing	IA	0	0	N/A
			PA	8	0	Jul 31 – TBD
III	WV	Severe Weather and Flooding July 28-29, 2017	IA	5 (+1)	0	Aug 2 – TBD
			PA	11	0	Aug 2 – TBD
V	WI	Severe Storms and Flooding July 12, 2017	IA	3	2 (+2)	Aug 1 – TBD
			PA	3	1 (+1)	Aug 1 – TBD
VII	IA	Severe Storms, Tornadoes and Flooding July 19-23, 2017	IA	0	0	N/A
			PA	8	0	Aug 2 – TBD

Declaration Approved



FEMA

FEMA-4326-DR-MI

- Major Disaster Declaration approved August 2, 2017
- For severe storms and flooding that occurred June 22-27, 2017
- Provides:
 - Individual Assistance for 4 counties & one Tribe
 - Hazard Mitigation statewide
- FCO is Steven W. Johnson



Disaster Requests & Declarations



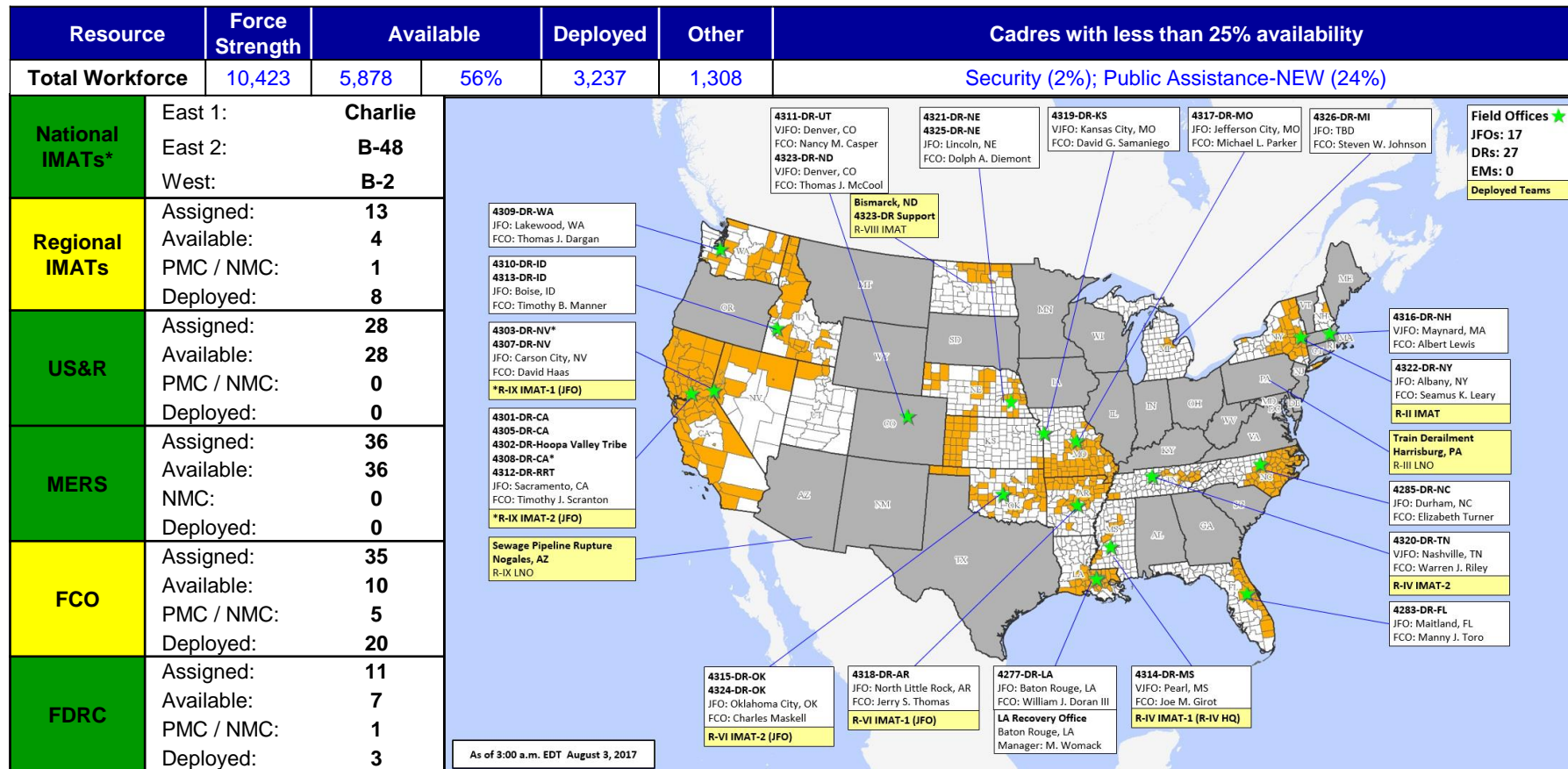
FEMA

Declaration Requests in Process		Requests APPROVED (since last report)	Requests DENIED (since last report)
7	Date Requested	1	0
OR – DR (Appeal) Severe Winter Storm	June 9, 2017		
NY – DR (Expedited) DR Flooding	July 6, 2017		
WY – DR Flooding	July 10, 2017		
ID – DR Flooding, Landslides, and Mudslides	July 19, 2017		
ID – DR Flooding	July 20, 2017		
MI – DR Severe Storms and Flooding	July 21, 2017	Declared August 2, 2017	
VT – DR Severe Storms and Flooding	July 27, 2017		
NH – DR Severe Storms and Flooding	July 27, 2017		

Readiness – Deployable Teams and Assets



FEMA



*B-2 Status: Assemble ≤ 2-hrs, On Site ≤ 18-hrs; B-48 Status: Assemble and deploy ≤ 48hrs; Charlie Status: No team assemble time requirement

FEMA Readiness – Activation Teams



FEMA

Resource	Status	Total	Status	Activated Team	Activation Level	Activation Times	Reason/Comments
NWC		5	Not Activated				
NRCC		2	Not Activated				NRCS Blue Team – August Primary
HLT		1	Activated				Hurricane Season
RWCs/MOCs		10	Not Activated				
RRCCs		10	Not Activated				

Back-up Regions (July 31-August 7): I and III

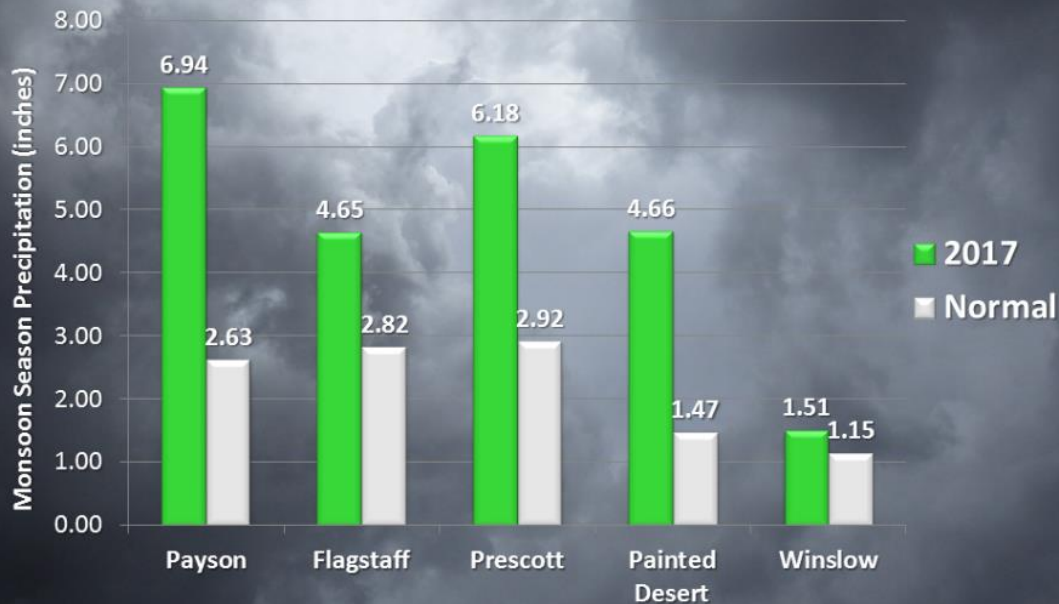
Monsoon 2017



FEMA

A Rainy Start to Monsoon 2017!

Below are the precipitation totals so far this monsoon season from June 15th – July 31st, compared to the normal amount of rainfall for this time period.





FEMA

FEMA's mission is to support our citizens and first responders to ensure that as a nation we work together to build, sustain, and improve our capability to prepare for, protect against, respond to, recover from, and mitigate all hazards.