

The Disaster Center is dedicated to the idea that disaster mitigation is cost effective and individuals pursuing their own interest are the greatest potential force for disaster reduction.

Please consider making a small donation to the Disaster Center



When disaster mitigation is cost effective, we are on the road to bringing disasters to an end.



FEMA

Daily Operations Briefing

Friday, August 5, 2016

8:30 a.m. EDT

Significant Activity - August 4 - 5



Significant Events: None

Tropical Activity:

- Atlantic - Tropical Storm Earl
- Eastern Pacific -Tropical Storm Ivette; Disturbance 1
- Central Pacific - No tropical cyclones expected through Saturday evening
- Western Pacific - No activity threatening U.S. territories

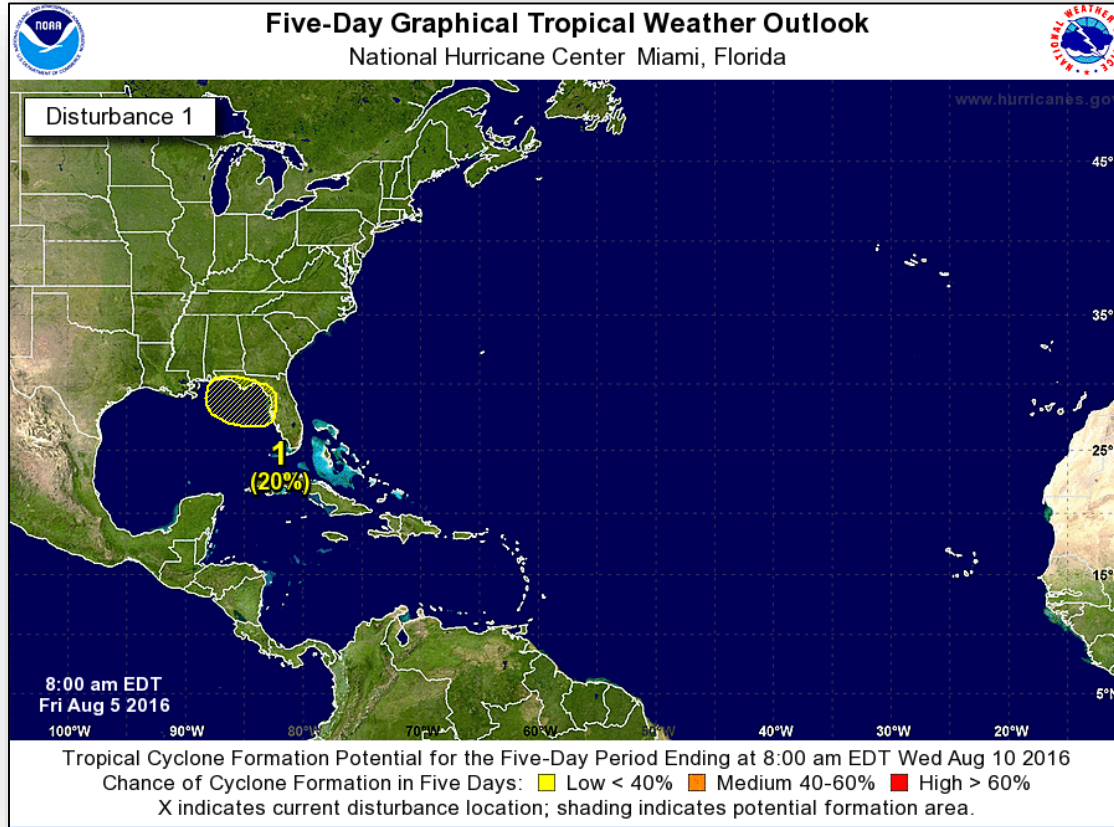
Significant Weather:

- Heavy monsoonal moisture and flash flooding - Desert Southwest and Southern Rockies; Florida
- Rain and thunderstorms - California, Central Great Basin, Southwest, Central Plains, Great Lakes, Mississippi River Valley, Ohio/Tennessee Valleys, Southeast, Mid-Atlantic and Northeast
- Elevated fire weather areas - Northern CA, NV
- Isolated Dry Thunderstorms - CA, NV, WA, OR, ID, and MT
- Red Flag Warnings - OR, ID & UT
- Space Weather - Past 24 hours, no storms observed; next 24 hours, no storms predicted

Earthquake Activity: No significant activity

Declaration Activity: Major Disaster Declaration Request - Fort Peck Assiniboine and Sioux Tribes

Tropical Outlook - Atlantic



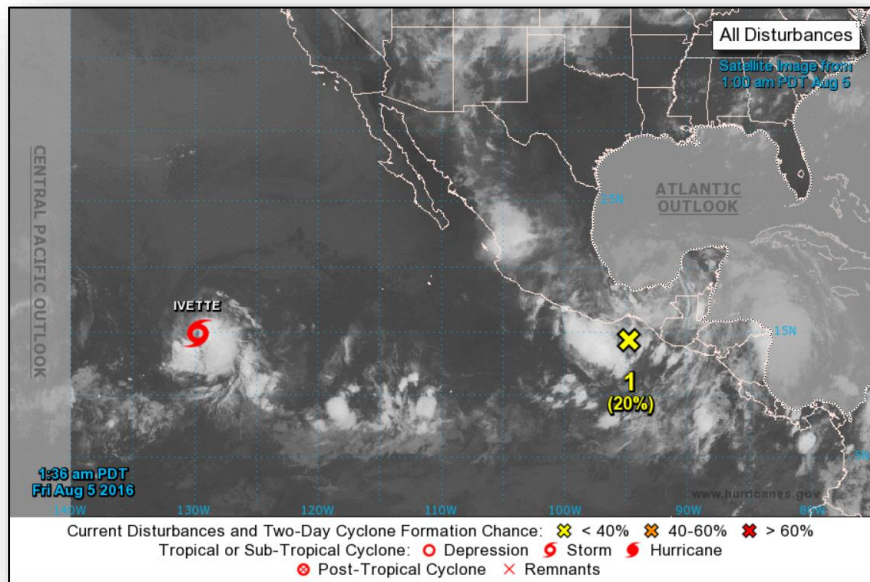
Tropical Outlook - Atlantic



Tropical Storm Earl (Advisory #12 as of 5:00 a.m. EDT)

- Located 70 miles SW of Ciudad del Carmen, Mexico
- Moving WNW at 12 mph
- Maximum winds 40 mph
- Little change in strength is forecast through tonight
- Weakening is expected on Saturday
- Tropical storm force winds extend 70 miles

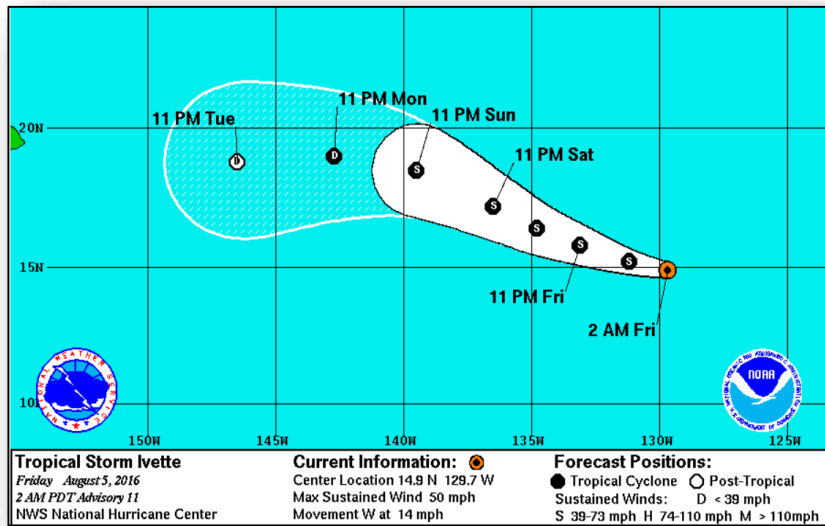
Tropical Outlook - Eastern Pacific



Disturbance 1 (As of 5:00 a.m. EDT)

- Located south of Gulf of Tehuantepec
- Moving NW towards Baja California, Mexico peninsula
- Expected to move WNW and merge with remnants of TS Earl
- Conditions appear conducive for development
- Tropical depression likely to form early next week
- Formation chance through 48 hours: LOW (20%)
- Formation chance through 5 days: HIGH (70%)

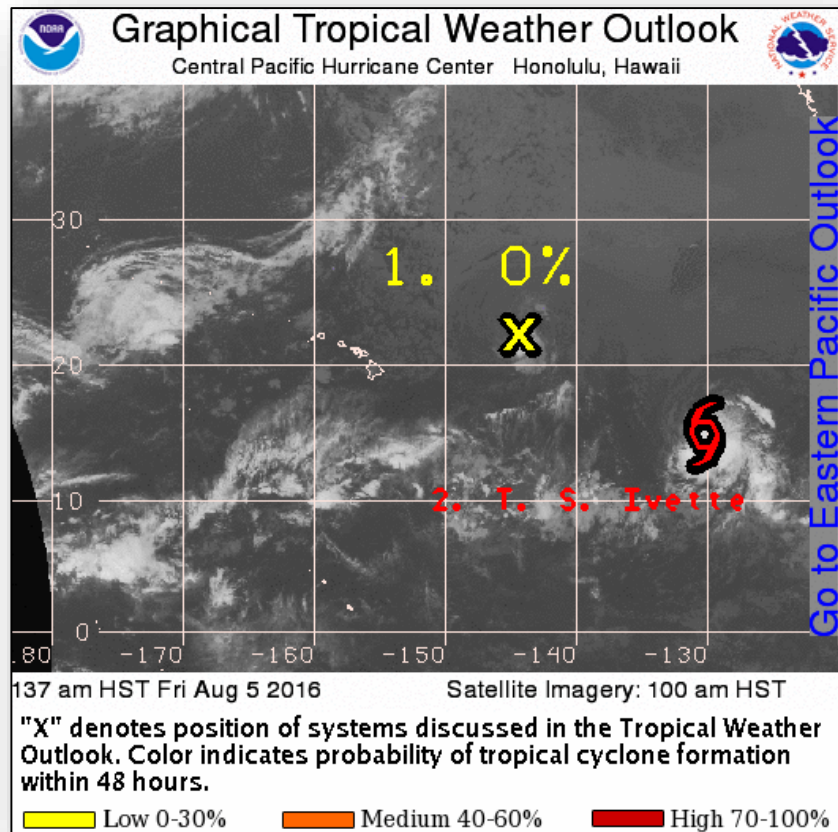
Tropical Outlook - Eastern Pacific



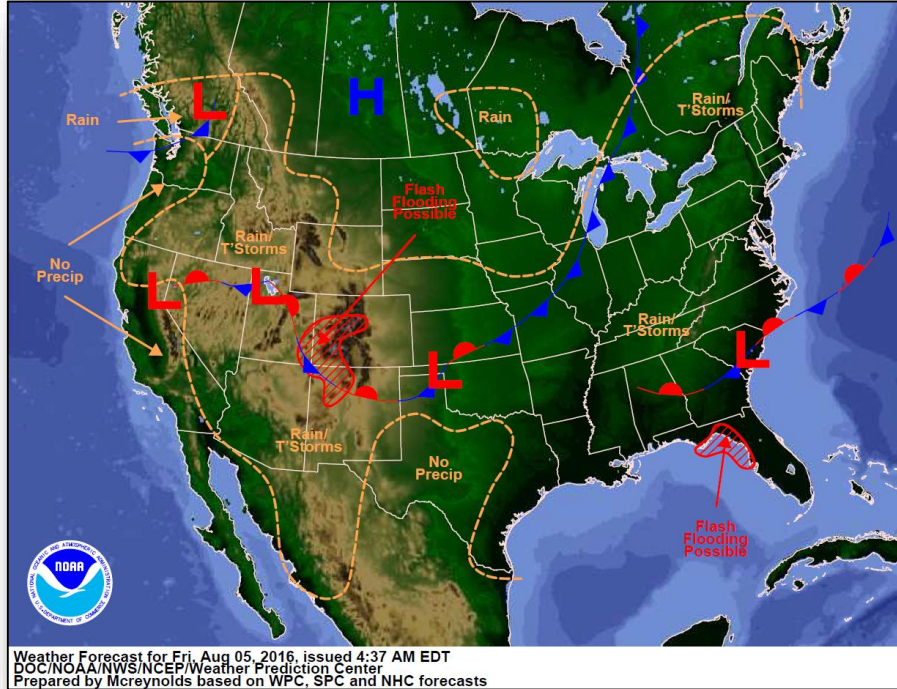
Tropical Storm Ivette (Advisory #11 as of 5:00 a.m. EDT)

- Located 1,405 miles WSW of southern tip of Baja California, Mexico
- Moving W at 14 mph
- A turn toward WNW at a slightly slower speed expected Saturday
- Maximum sustained winds 50 mph
- Slight strengthening expected over next 24-48 hours
- Tropical storm force winds extend 70 miles

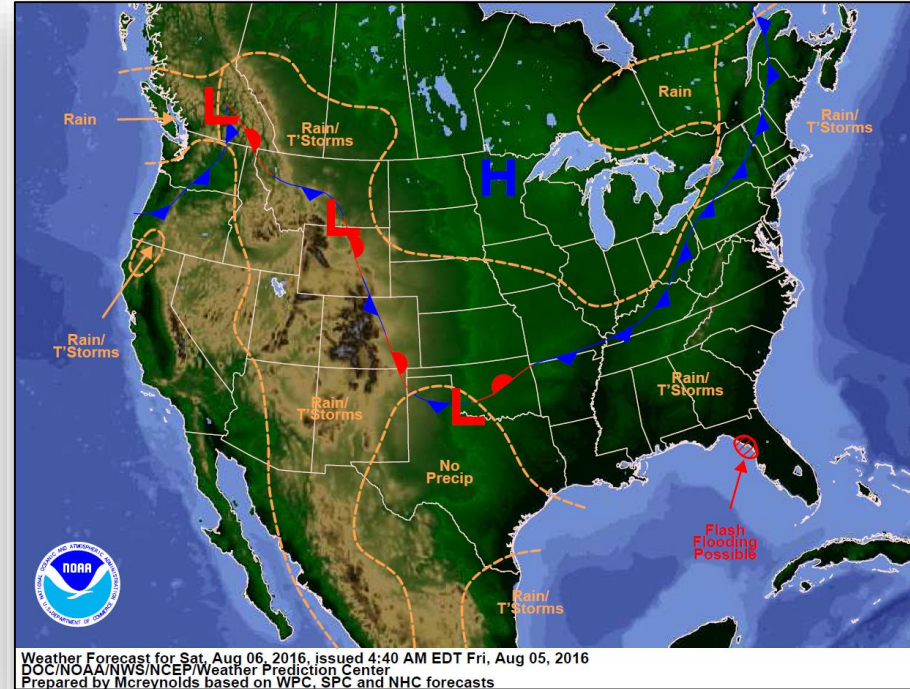
Tropical Outlook - Central Pacific



National Weather Forecast

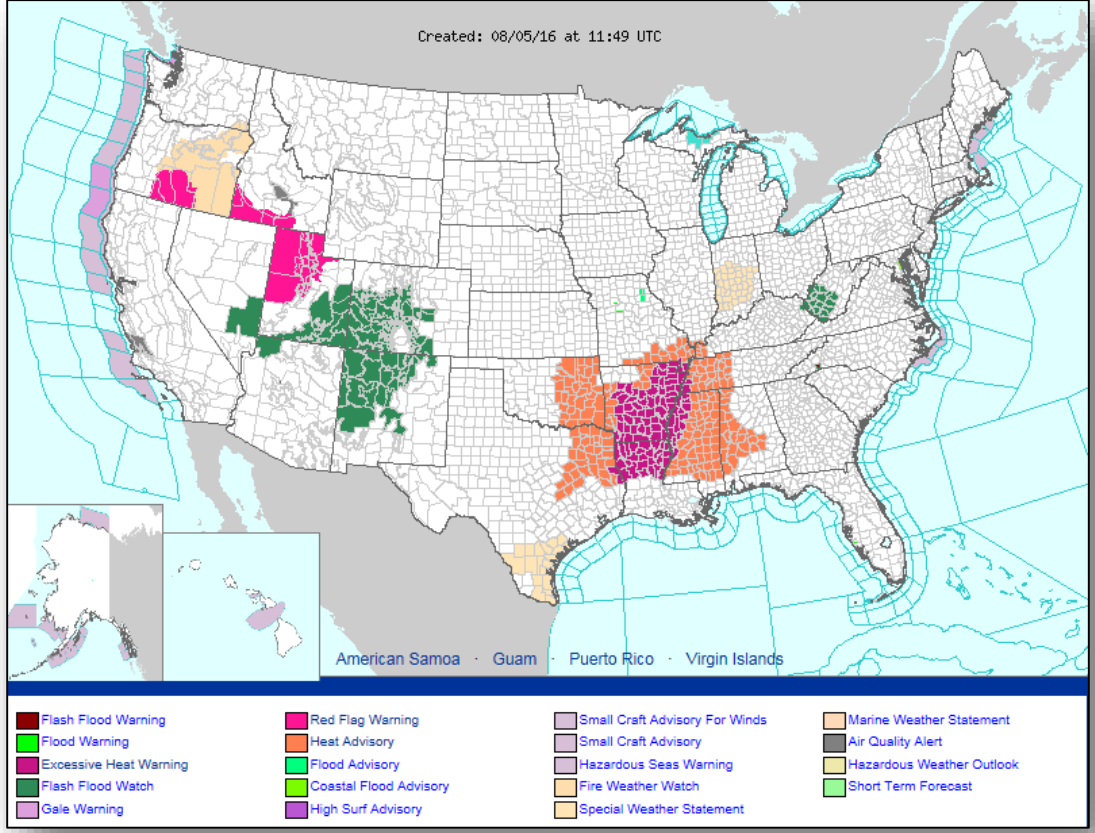


Today



Tomorrow

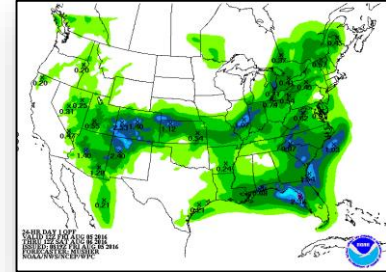
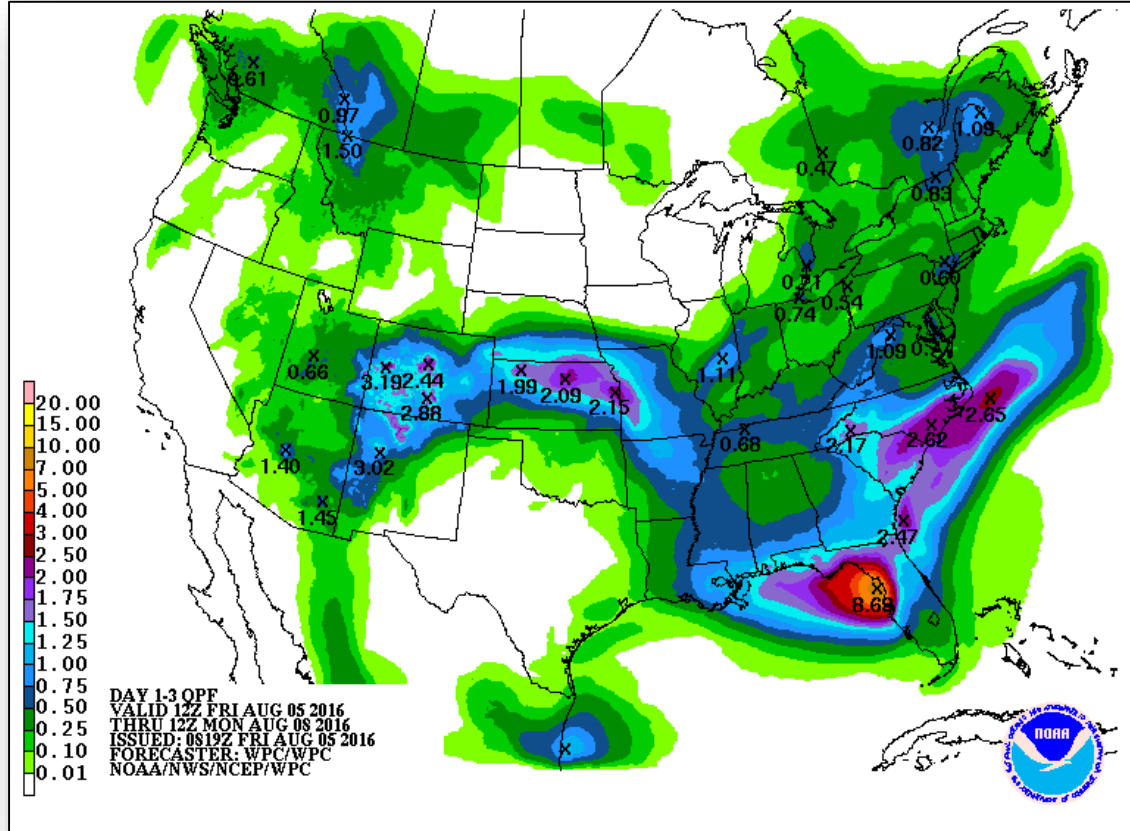
Active Watches & Warnings



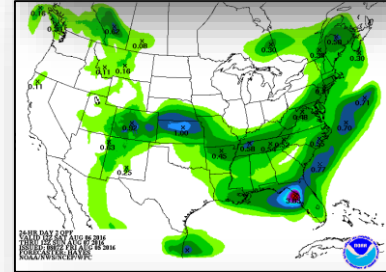
Precipitation Forecast - Days 1-3



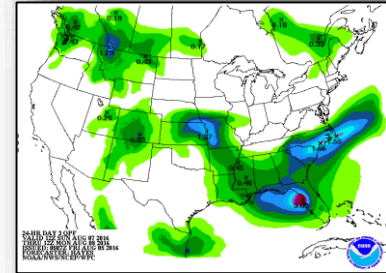
FEMA



Day 1

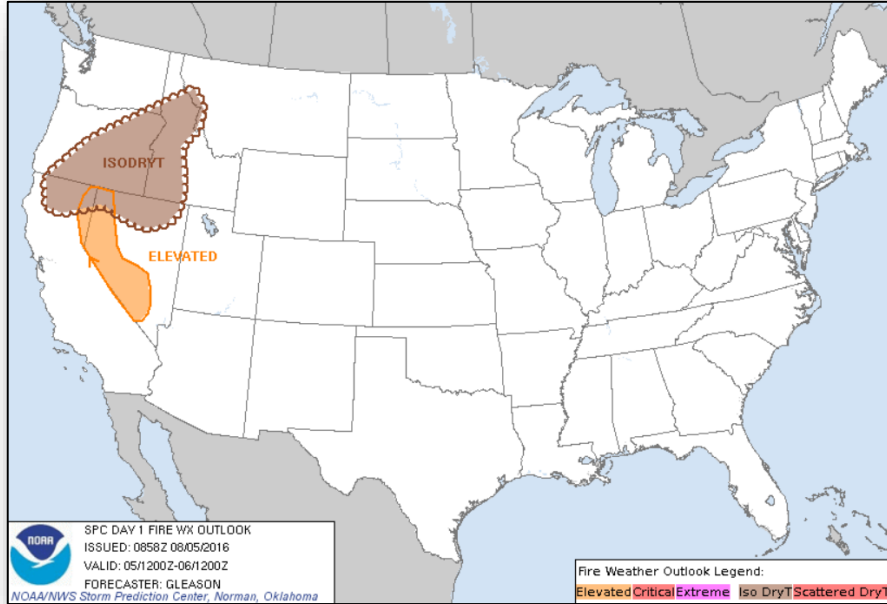


Day 2

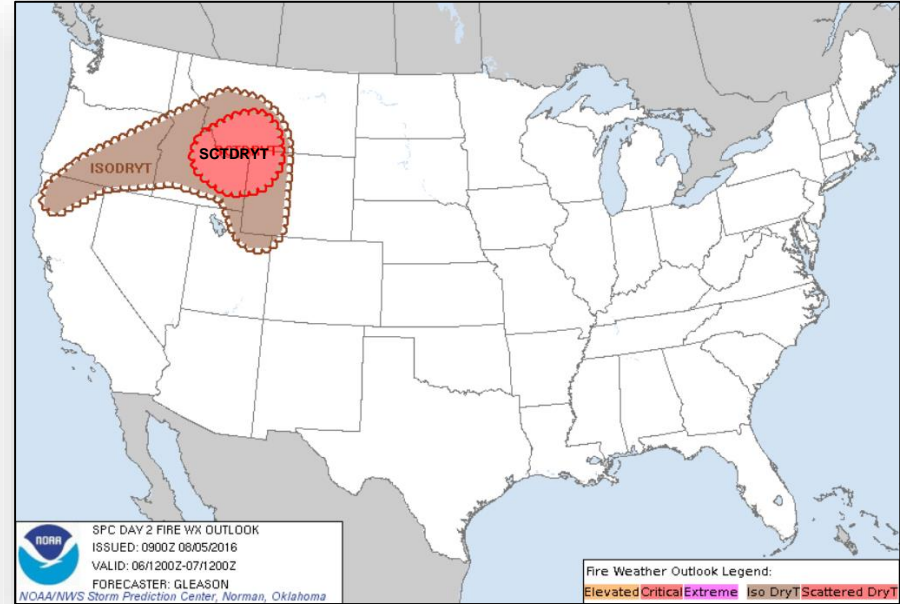


Day 3

Fire Weather Outlook

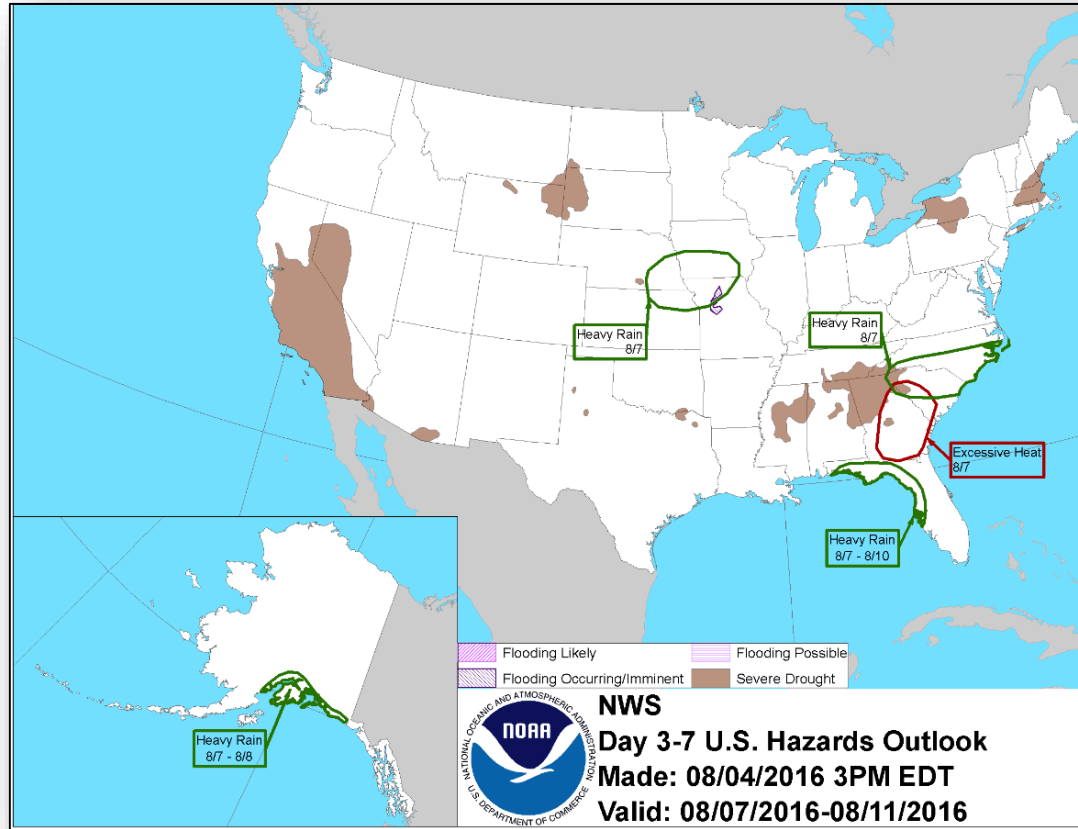


Day 1

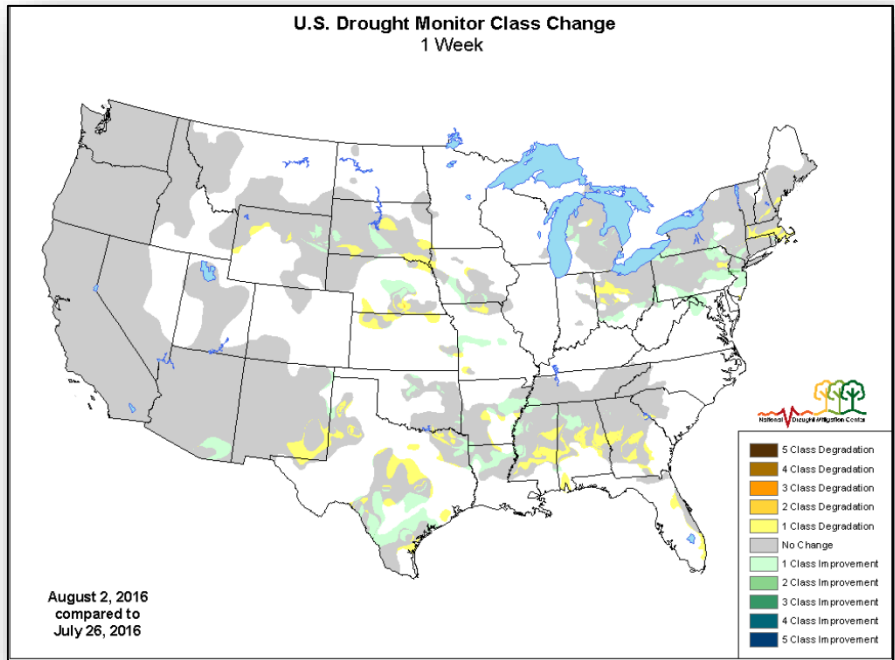
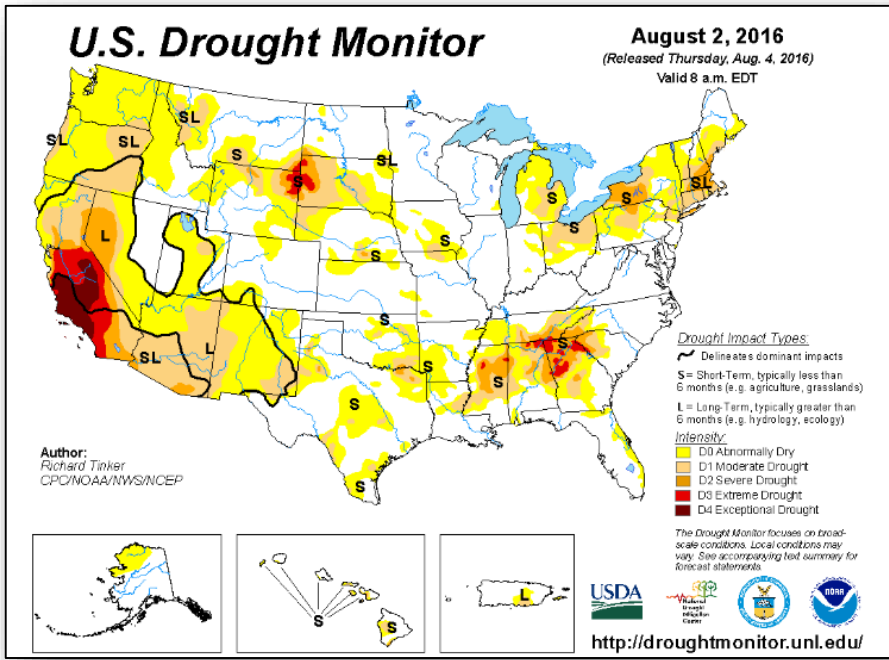


Day 2

Hazards Outlook - August 7 -11

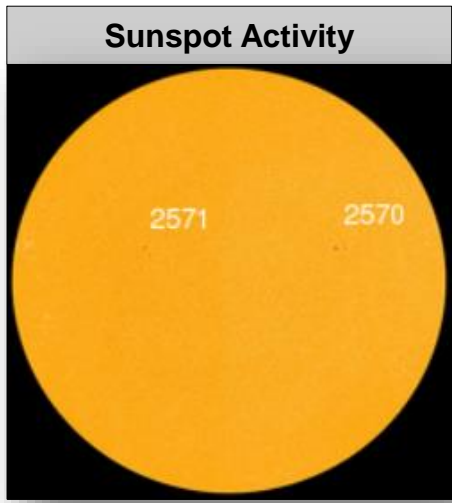
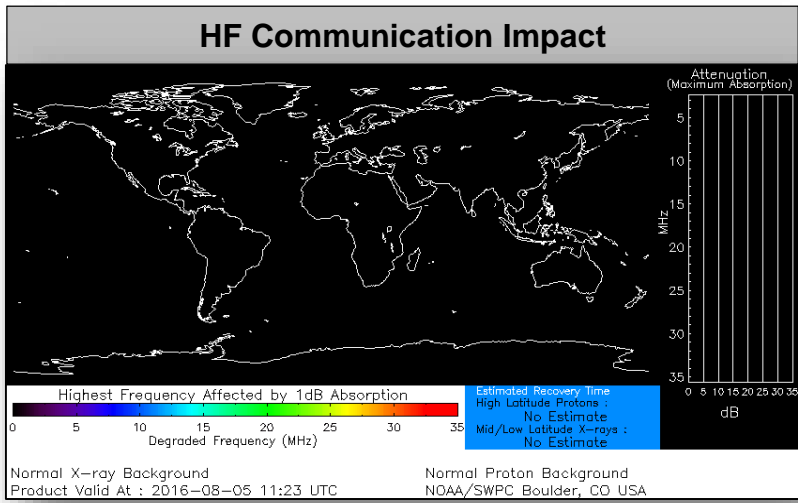


U.S. Drought Monitor



Space Weather

	Past 24 Hours	Current	Next 24 Hours
Space Weather Activity	None	None	None
Geomagnetic Storms	None	None	None
Solar Radiation Storms	None	None	None
Radio Blackouts	None	None	None



Wildfire Summary



Fire Name (County)	FMAG #	Acres burned	% Contained	Evacuations (Residents)	Structures Threatened	Structures Damaged / Destroyed	Fatalities / Injuries
California (1)							
Soberanes Fire (Monterey County)	FEMA-5137-FM-CA	51,200 (+200)	30% (+3)	Mandatory	2,000 homes	5 (3 homes) / 68 (57 homes)	1 / 1
Montana (1)							
Roaring Lion Fire (Ravalli County)	FEMA-5143-FM-MT	7,753 (+624)	15% (+8)	Mandatory	2,347 (847 homes)	3 / 61 (14 homes)	0 / 0

Joint Preliminary Damage Assessments



Region	State / Location	Event	IA/PA	Number of Counties		Start – End
				Requested	Complete	
III	WV	Severe weather & heavy rains July 30, 2016	IA	1	0	8/5 - TBD
			PA	1	0	8/6 - TBD
III	MD	Severe weather & heavy rains July 30, 2016	PA	1	0	8/4 - TBD
IV	KY	Severe storms, tornadoes, flooding & strong winds July 3-9, 2016	IA	2	1	8/2 - TBD
			PA	22	7	8/2 - TBD

Disaster Requests & Declarations



Declaration Requests in Process		Requests APPROVED (since last report)	Requests DENIED (since last report)
2	Date Requested	0	0
WI – DR Severe storms and flooding	August 3, 2016		
Fort Peck Tribes: Assiniboine & Sioux – DR Severe storm and straight-line winds	August 1, 2016		

Major Disaster Declaration Request - Tribes

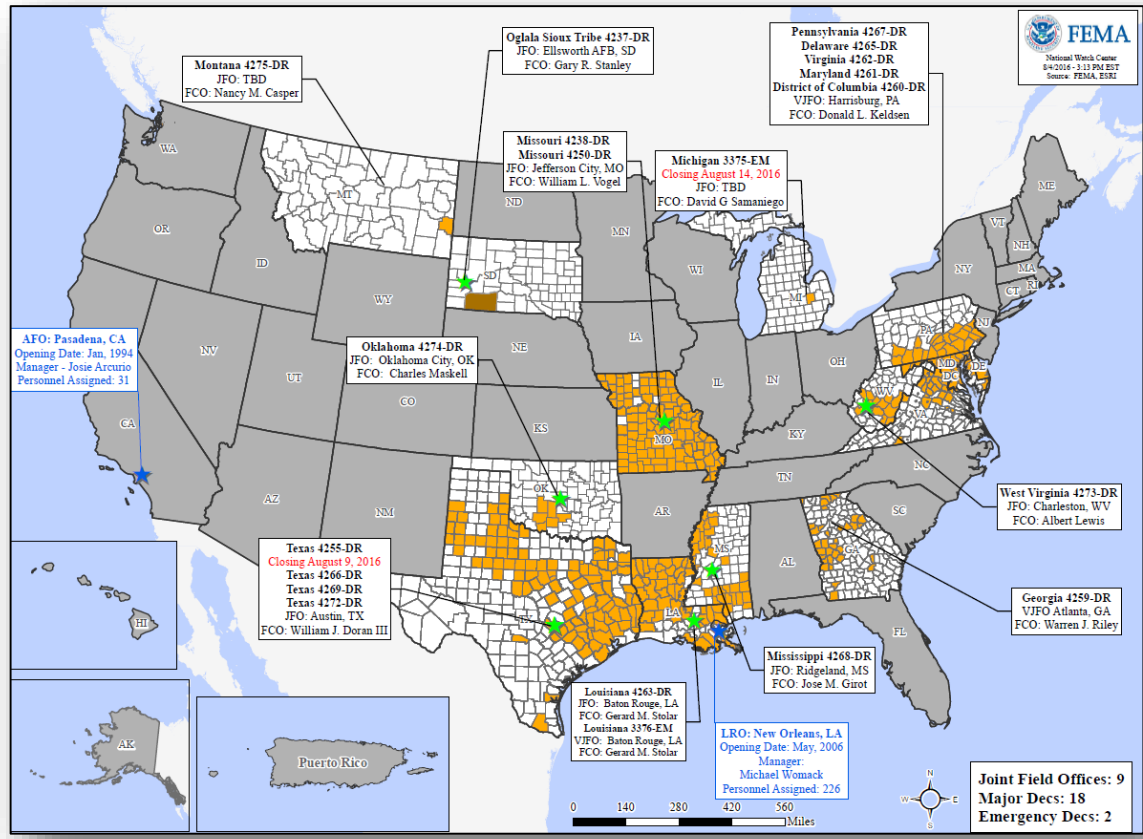


August 1, 2016

- Request for Major Disaster Declaration for Fort Peck Tribes, Assiniboine and Sioux, for a severe storm and straight-line winds on June 24, 2016
- Requesting:
 - Individual and Household Program (IHP) for Fort Peck Tribes, Assiniboine and Sioux
 - Hazard Mitigation for the Fort Peck Indian Reservation



Open Field Offices as of August 5, 2016



FEMA Readiness - Deployable Teams & Assets



Deployable Teams & Assets									
Resource	Status	Total	FMC Available		Partially Available	Not Available	Detailed, Deployed, Activated	Comments	Rating Criterion
FCO		37	11	30%	0	3	23		OFDC Readiness: FCO Green Yellow Red Type 1 3+ 2 1 Type 2 4+ 3 2 Type 3 4 3 2 FDRC 3 2 1
FDRC		10	4	40%	0	0	6		
US&R		28	27	96%	1	0	0	NJ-TF1: Partially Mission Capable	<ul style="list-style-type: none"> Green = Available/FMC Yellow = Available/PMC Red = Out-of-Service Blue = Assigned/Deployed
National IMAT		3	3	100%	0	0	0	East 2: Primary (On Call)	<ul style="list-style-type: none"> Green: 3 available Yellow: 1-2 available Red: 0 avail (<i>Individual N-IMAT red if 50% of Section Chiefs and/or Team Leader is unavailable for deployment.</i>)
Regional IMAT		13	10	77%	0	2	1	<u>Deployed:</u> Region I: Reconstituting (FMC - Aug 15, 2016) Region III: WV (4273-WV) Region VII: Reconstituting (FMC - Aug 7, 2016)	<ul style="list-style-type: none"> Green: >6 teams available Yellow: 4 - 6 teams available Red: < 4 teams available R-IMAT also red if TL Ops/Log Chief is unavailable & has no qualified replacement
MERS Teams		18	18	100%	0	0	0	<u>Deployed:</u> None	<ul style="list-style-type: none"> Green = >66% available Yellow = 33% to 66% available Red = <33% available

FEMA Readiness - National & Regional Teams



National/Regional Teams									
Resource	Status	Total	FMC Available		Partially Available	Not Available	Status	Comments	Rating Criterion
NWC		5	5	100%	0	0	Not Activated		<ul style="list-style-type: none"> • Green = FMC • Yellow = PMC • Red = NMC
NRCC		2	2	100%	0	0	Not Activated		
HLT		1	1	100%	0	0	Activated		
DEST							Not Activated		
RRCCs		10	10	100%	0	0	Not Activated		
RWCs/MOCs		10	10	100%	0	0	Not Activated		



FEMA

FEMA's mission is to support our citizens and first responders to ensure that as a nation we work together to build, sustain, and improve our capability to prepare for, protect against, respond to, recover from, and mitigate all hazards.