

The Disaster Center is dedicated to the idea that disaster mitigation is cost effective and individuals pursuing their own interest are the greatest potential force for disaster reduction.

Please consider making a small donation to the Disaster Center



When disaster mitigation is cost effective, we are on the road to bringing disasters to an end.



FEMA

Daily Operations Briefing

**Monday, August 6, 2018
8:30 a.m. EDT**

Significant Activity – Aug 3-6



FEMA

Significant Events: Wildfires; Hurricane Hector

Tropical Activity:

- Atlantic – Disturbance 1 – Low (20%)
- Eastern Pacific – Tropical Storm John; Tropical Storm Ileana; Disturbance 1 – High (80%)
- Central Pacific – Hurricane Hector (CAT 4)
- Western Pacific – No activity affecting U.S. interests

Significant Weather:

- Severe storms – Central High Plains and Middle Mississippi Valley to Lower MI
- Flash flooding possible – Central High Plains to Central Plains; Middle Mississippi Valley to Lower MI
- Elevated/critical fire weather – CA
- Red Flag Warnings – CA, NV, & AZ

Declaration Activity:

- Major Disaster Declaration approved – CA
- FMAG approved – Angel Springs Fire, WA

Carr Fire – Shasta and Trinity counties, CA



FEMA

Current Situation: Acres burned: 160k (+15k); containment: 43% (+2)

Impacts:

- Structures / Homes:
 - Threatened: 1,195 (-129) homes, 22 multiple residences, 12 commercial properties
 - Damaged: 190 (+2) homes, 26 (+3) commercial, 60 minor structures
 - Destroyed: 1,080 (+10) homes, 24 (+3) commercial, 500 (+8) minor structures

Food, Water, and Sheltering:

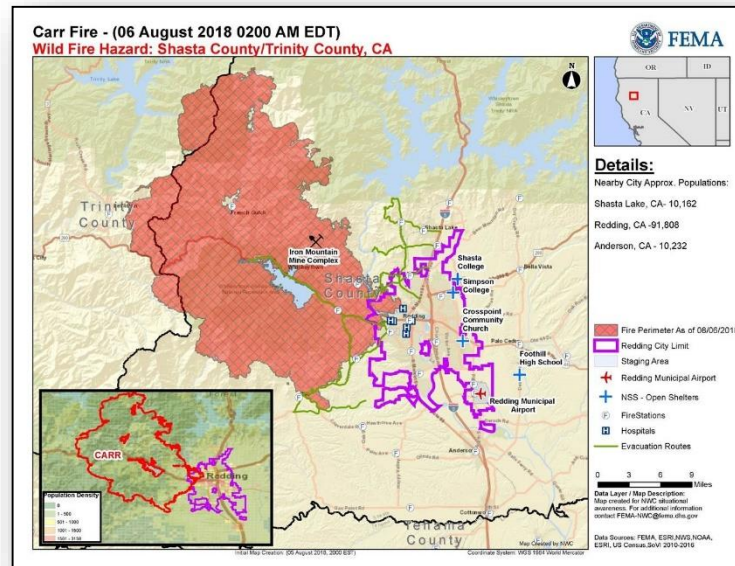
- Shelters / Occupants: 3 (-1) open / 73 (-79) occupants (*ARC Midnight Shelter Count*)
- Evacuations: Mandatory evacuations in effect for 21k people (-1k)
- ISB Team and commodities are staged at Redding Municipal Airport

Health and Medical:

- Fatalities / Injuries: 7 (+1) / 1
- HHS reports all major medical facilities are operational; no shortfalls identified
- 171 patients remain evacuated from skilled nursing facilities

Energy:

- Minimal customers without power in Shasta County; 151 customers without gas
- No immediate threat to power quality/generation or dam operations



Carr Fire – Shasta and Trinity counties, CA



FEMA

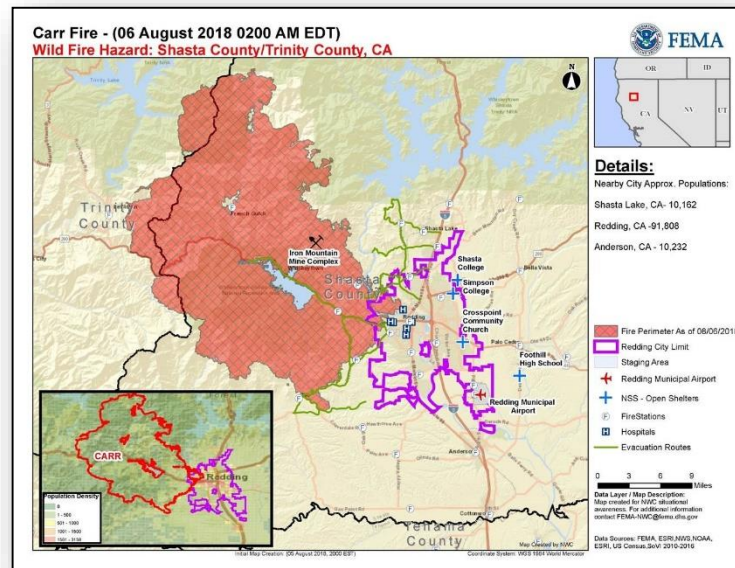
Response

State / Local Response

- CA EOC at Full Activation
- Governor declared a State of Emergency for six counties
- Major Disaster Declaration requested August 4, 2018

FEMA Response

- Major Disaster Declaration FEMA-4382-DR-CA approved August 4, 2018
- Emergency Declaration FEMA-3398-EM-CA approved July 28, 2018
- FMAG FEMA-5259-FM-CA approved July 23, 2018; amended August 2, 2018 to include Trinity County
- Region IX:
 - IMAT-2, two LNOs, DCO, and ESFs (1, 3, 4, 6, 7, 12) deployed to CA EOC
 - Region IX at Steady State, continues to monitor
- NWC continues to monitor and report as warranted



Mendocino Fire Complex, CA



FEMA

Current Situation:

Acres burned: 267k (+38k); containment: 33% (+1)

Impacts:

- Structures / Homes:
 - Threatened: 9k (-6k) homes, 300 commercial properties
 - Damaged: 12 homes, 14 (+3) minor structures
 - Destroyed: 67 (+13) homes, 1 multiple residence, 62 (+13) minor structures
- Minimal customers without power
- Road closures remain in effect for sections of Highways 20, 29, and 175

Health and Medical:

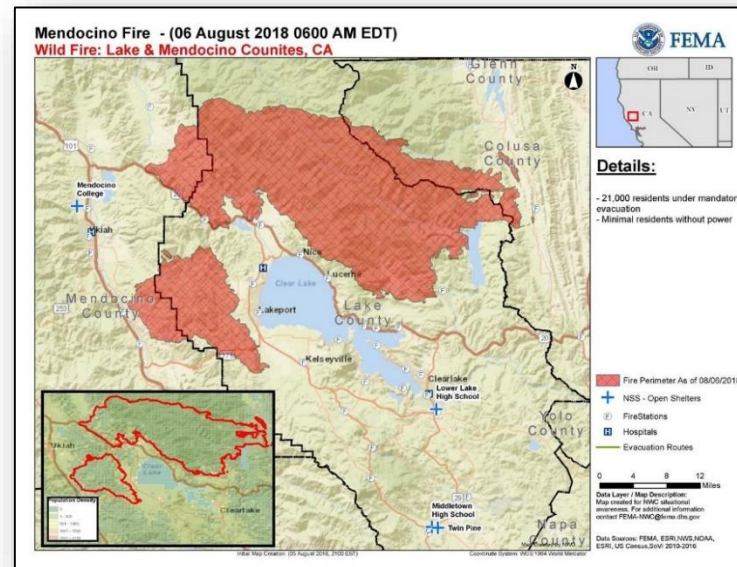
- Fatalities / Injuries: 0 / 0

Food, Water and Sheltering:

- Evacuations: Mandatory evacuations in effect for 21k people
- Shelters: 8 (+2) open / 577 (+195) occupants (ARC Midnight Shelter Count)

Response

- CA EOC at Full Activation
- Governor declared a State of Emergency for six counties
- Region IX:
 - FMAG FEMA-5262-FM-CA approved July 28, 2018
 - IMAT-2, two LNOs, DCO, and ESFs (1, 3, 4, 6, 7, 12) deployed to CA EOC
 - Region IX at Steady State, continues to monitor
- NWC continues to monitor and report as warranted



Angel Springs Fire – Lincoln County, WA



FEMA

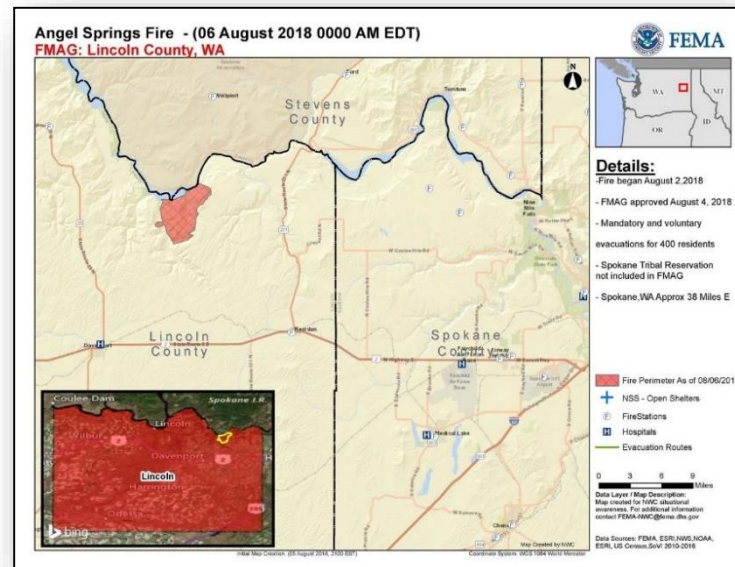
Fire Name (County)	FMAG Number	Acres Burned	Percent Contained	Evacuations (Residents)	Structures			Fatalities / Injuries
					Threatened	Damaged	Destroyed	
Angel Springs (Lincoln)	5266-FM-WA	4,500	15%	Mandatory & Voluntary	170 homes	0	3 (2 homes)	0 / 0

Current Situation

- Fire began August 2, 2018 and is burning on State, private, and tribal land
- Burning near multiple communities (combined pop. 800)
- Threatening:
 - 170 homes (84% primary homes, 16% secondary homes)
 - Large scale utilities and major infrastructure including dams and reservoirs
- Mandatory and voluntary evacuations in effect for 200 people
- Fire crossed the Spokane River onto the Spokane Tribal reservation but the reservation is not part of this FMAG
- FMAG approved August 4, 2018

Response

- WA EOC at Partial Activation
- Governor declared a state of emergency for the entire State (wildfire danger)
- FEMA Region X at Steady State, continues to monitor



Wildfire Summary

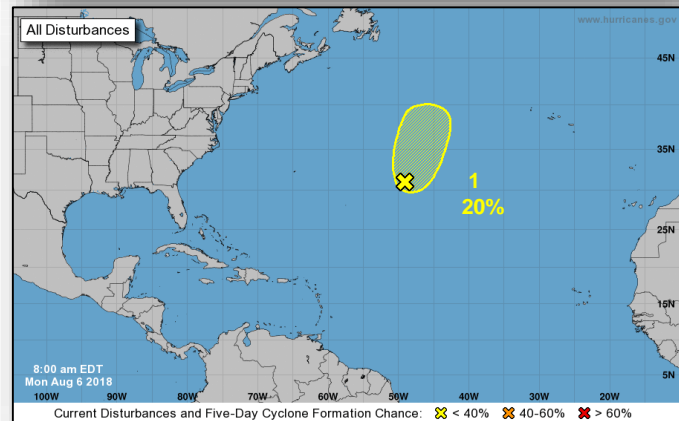
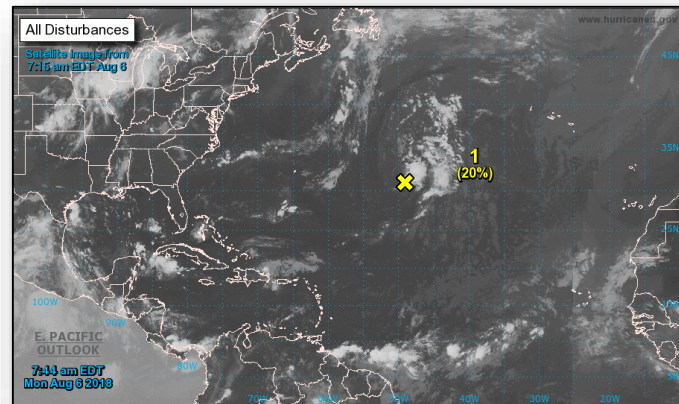


Fire Name (County)	FMAG Number	Acres Burned	Percent Contained	Evacuations (Residents)	Structures			Fatalities / Injuries
					Threatened	Damaged	Destroyed	
Oregon (1)								
South Valley Road FINAL (Wasco)	5265-FM-OR	20,026	60% (+20)	Lifted	212 homes (+40)	0	18 (+4) (3 homes)	0 / 0

Tropical Outlook – Atlantic

Disturbance 1 (as of 8:00 a.m. EDT)

- 1,200 miles WSW of the Azores, moving very little
- Conditions expected to become marginally conducive to acquire subtropical or tropical characteristics over the next day or two
- Formation chance through 48 hours: Low (20%)
- Formation chance through 5 days: Low (20%)



Tropical Outlook – Eastern Pacific



FEMA

Tropical Storm Ileana (Advisory #7A as of 8:00 a.m. EDT)

- 305 miles SE of Manzanillo, Mexico
- Moving NW at 17 mph, parallel to and just offshore of coastal Mexico
- Maximum sustained winds 65 mph
- Expected to become a hurricane by Tuesday
- Hurricane Watch and Tropical Storm Watches/Warnings in effect for coastal areas of southwestern Mexico



Tropical Outlook – Eastern Pacific



FEMA

Tropical Storm John (Advisory #3 as of 5:00 a.m. EDT)

- 335 miles SW of Manzanillo, Mexico
- Moving WNW at 8 mph
- Forecast to become a hurricane later today and a major hurricane Tuesday
- Maximum sustained winds 60 mph
- No coastal watches or warnings in effect

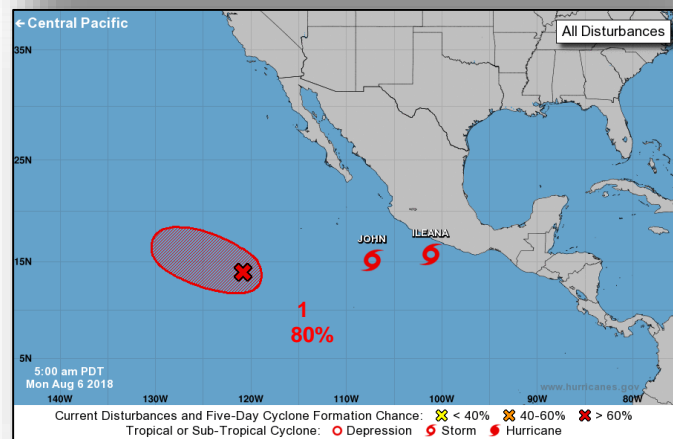
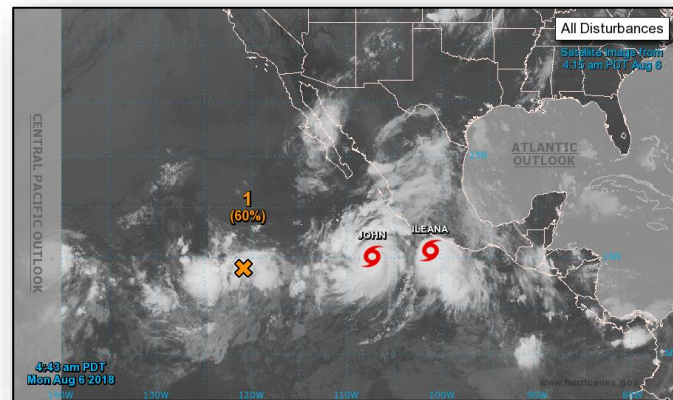


Tropical Outlook – Eastern Pacific



Disturbance 1 (as of 8:00 a.m. EDT)

- Located 1,000 miles SW of the southern tip of Baja California peninsula
- Moving WNW at 5 to 10 mph
- A tropical depression is likely to form by the middle of the week
- Formation chance through 48 hours: Medium (60%)
- Formation chance through 5 days: High (80%)



Tropical Outlook – Central Pacific



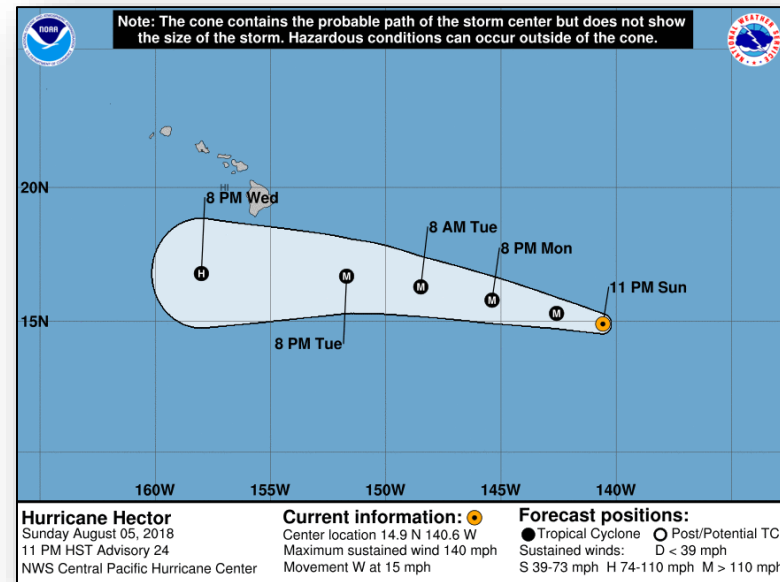
FEMA

Hurricane Hector (CAT 4) (Advisory #24 as of 5:00 a.m. EDT)

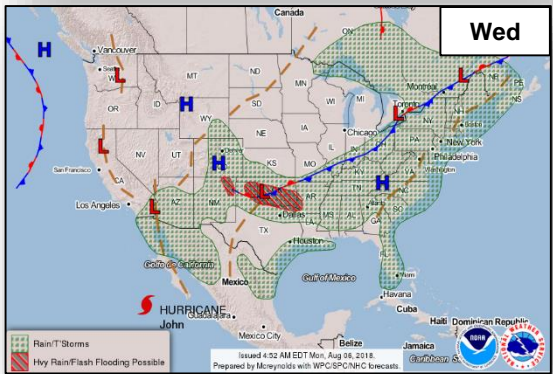
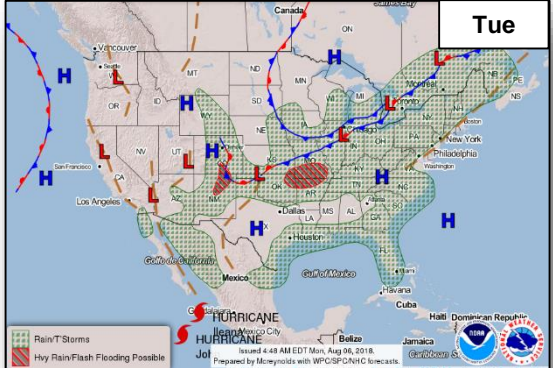
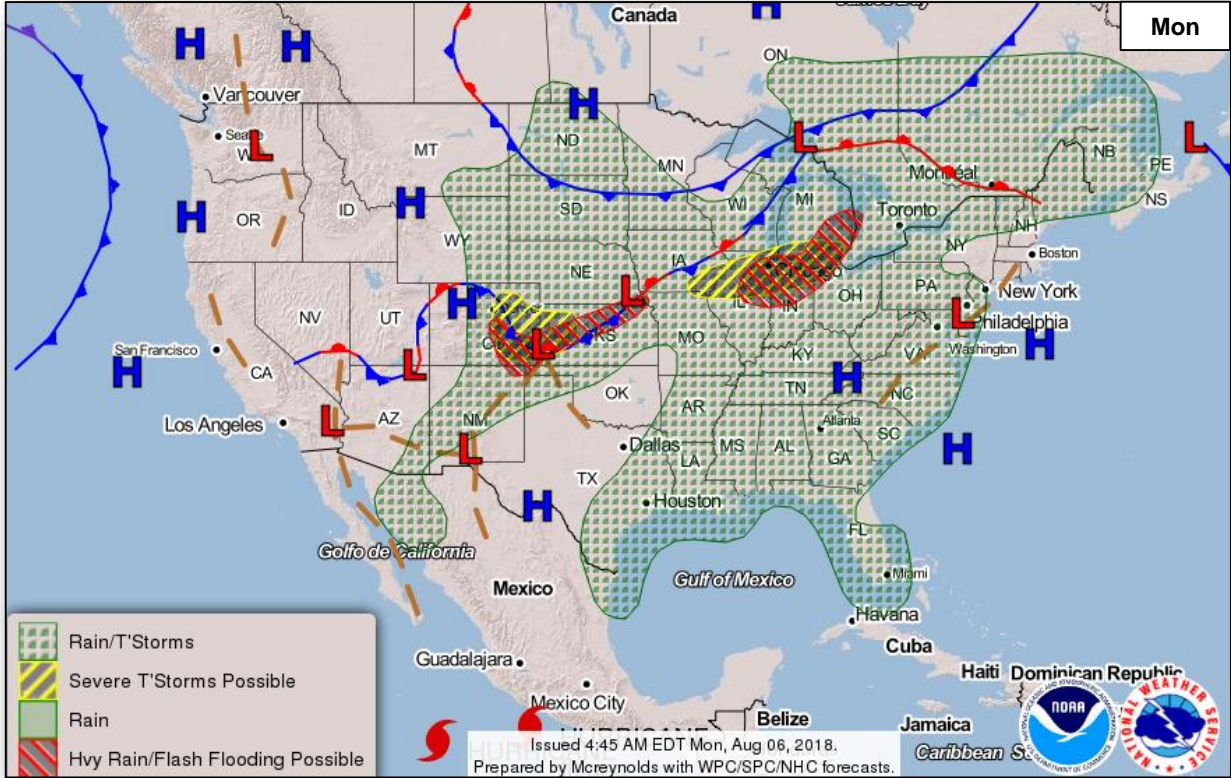
- 1,010 miles ESE of Hilo, Hawaii
- Moving W at 15 mph
- Maximum sustained winds 140 mph
- gradual weakening expected tonight through Wednesday
- Hurricane-force winds extend 35 miles
- Tropical-storm-force winds extend 105 miles
- No coastal watches or warnings in effect

Preparations

- HI EOC continues to monitor Hurricane Hector (already at Partial activation for ongoing Kilauea Volcano activity)
- FEMA Region IX IMAT-1 already deployed to HI for Kilauea volcano activity (will support Hector response if required)
- Select ESFs (1, 2, 3, 6, 7, 8, 10, 12), DCO, and LNOs activated to HIEMA/JFO
- USACE Emergency Power PRT deploying to Hilo, HI
- Two ISB teams deployed
- FEMA Region IX RWC at Steady State, but continues to monitor
- FEMA NWC continues to monitor and report, as needed



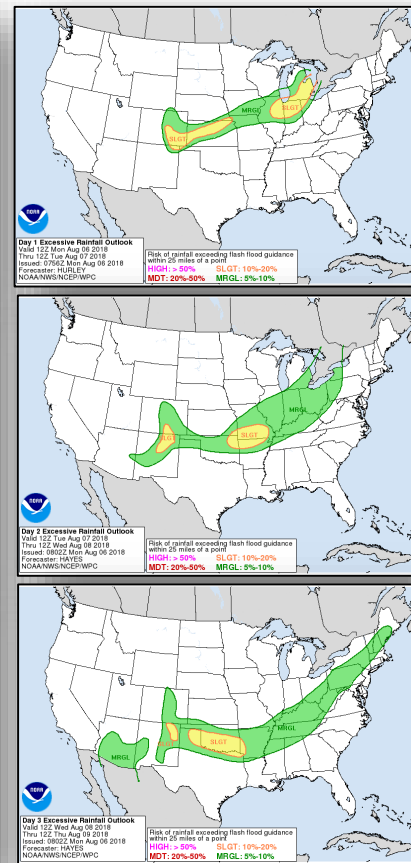
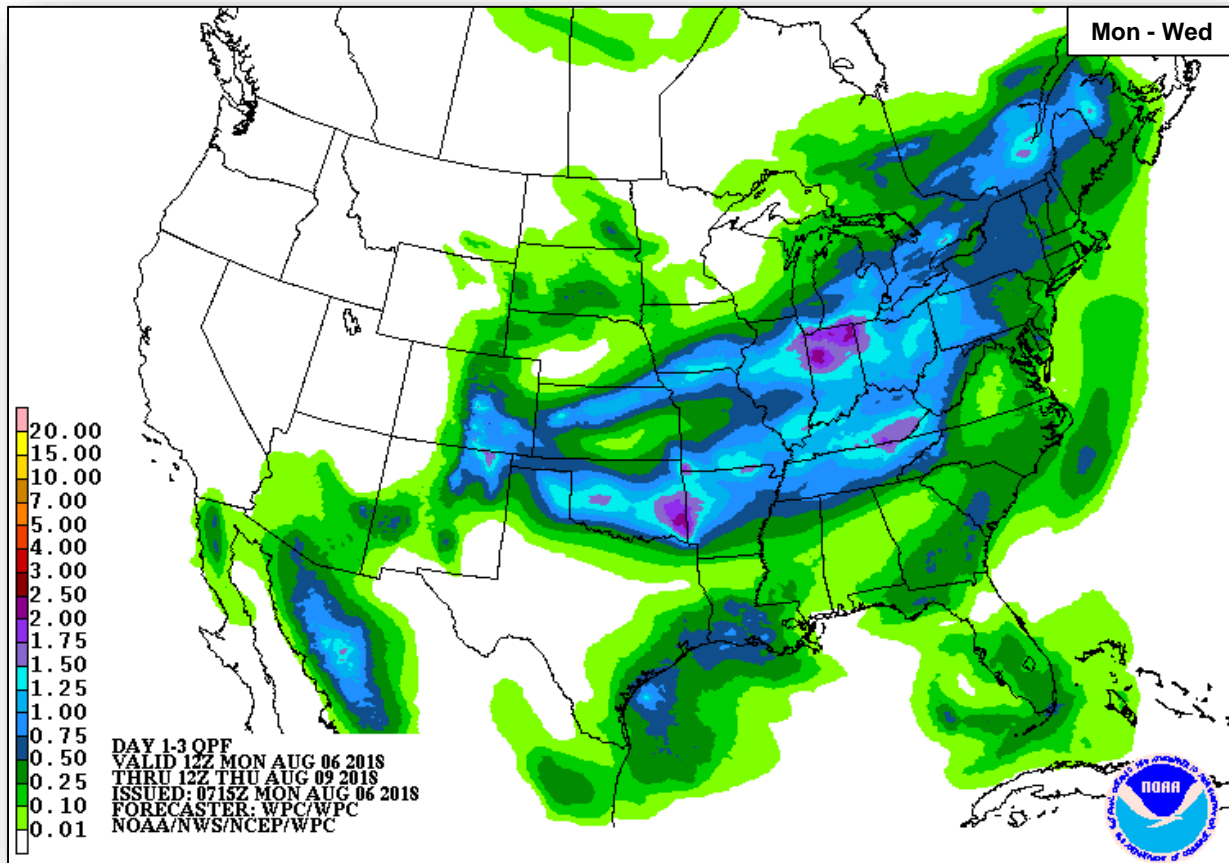
National Weather Forecast



Precipitation / Excessive Rainfall Forecast



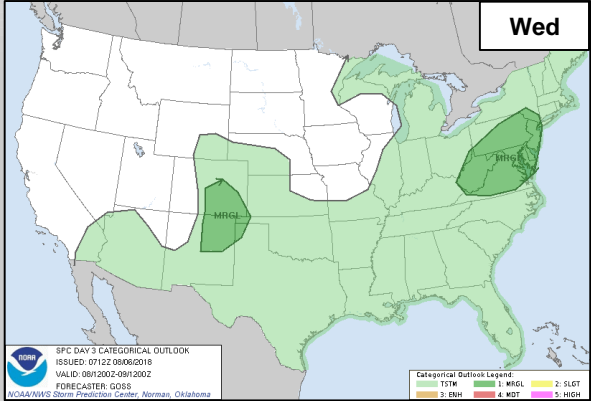
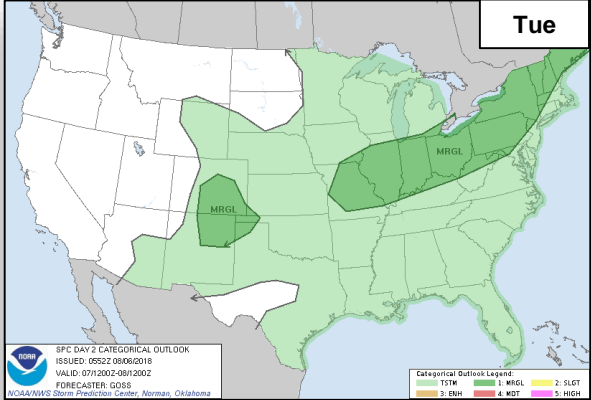
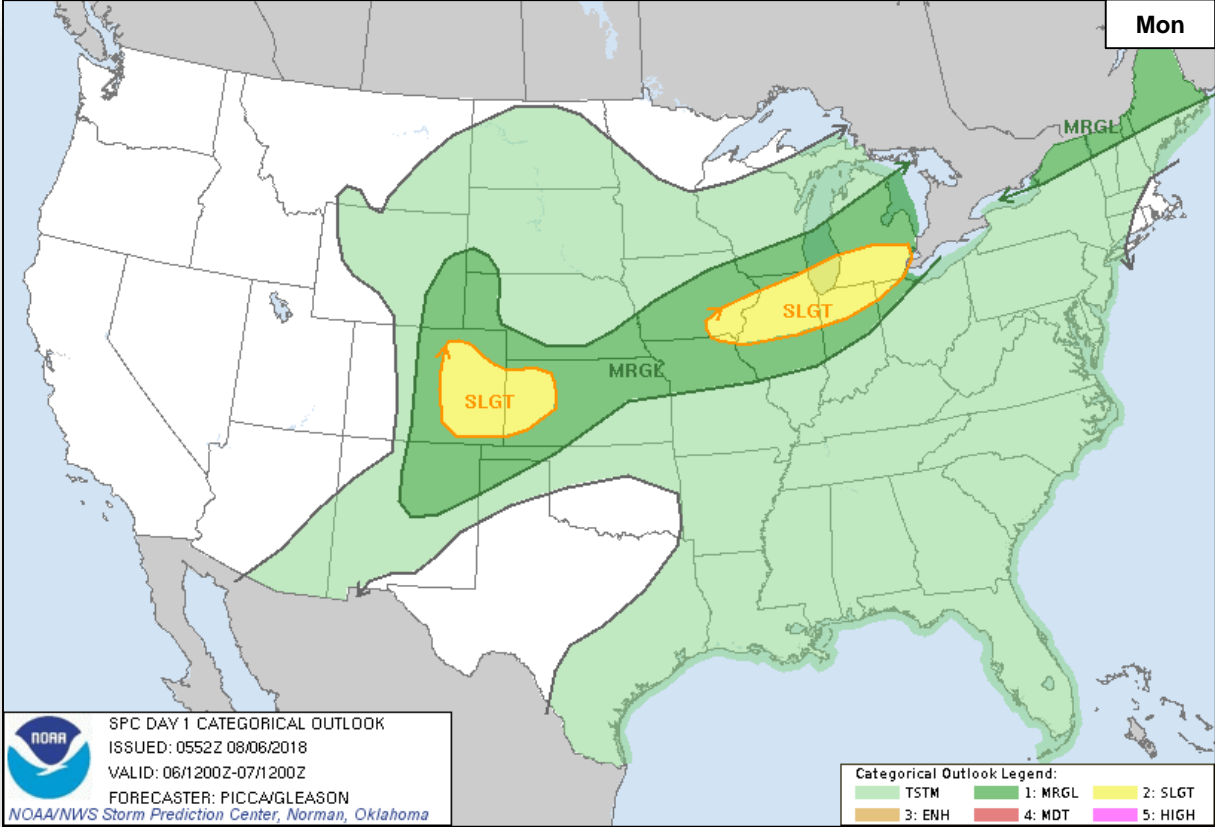
FEMA



Severe Weather Outlook



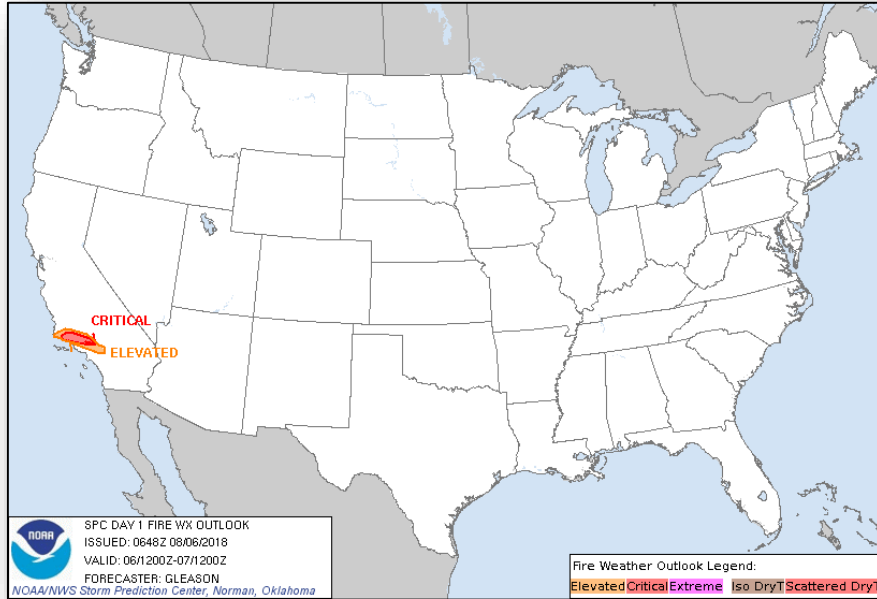
FEMA



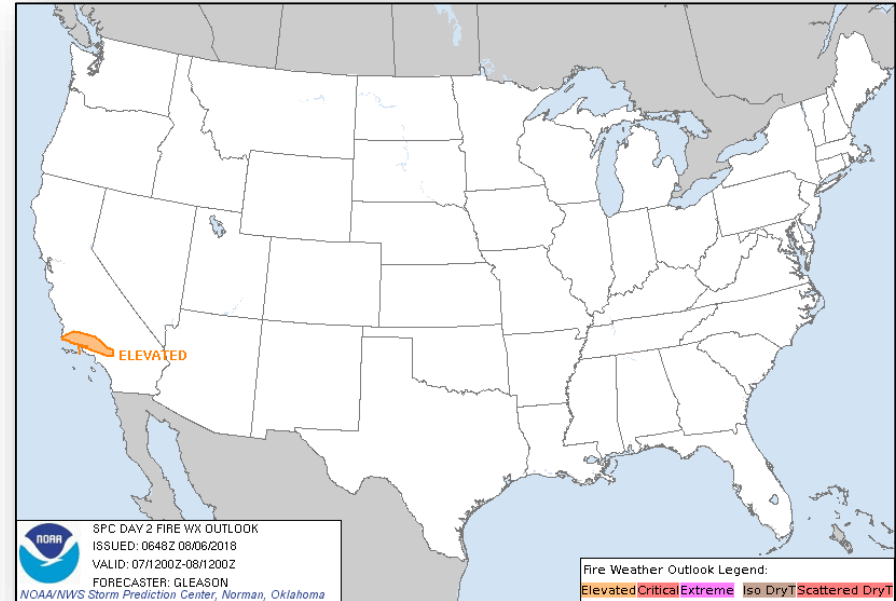
Fire Weather Outlook



FEMA



Monday

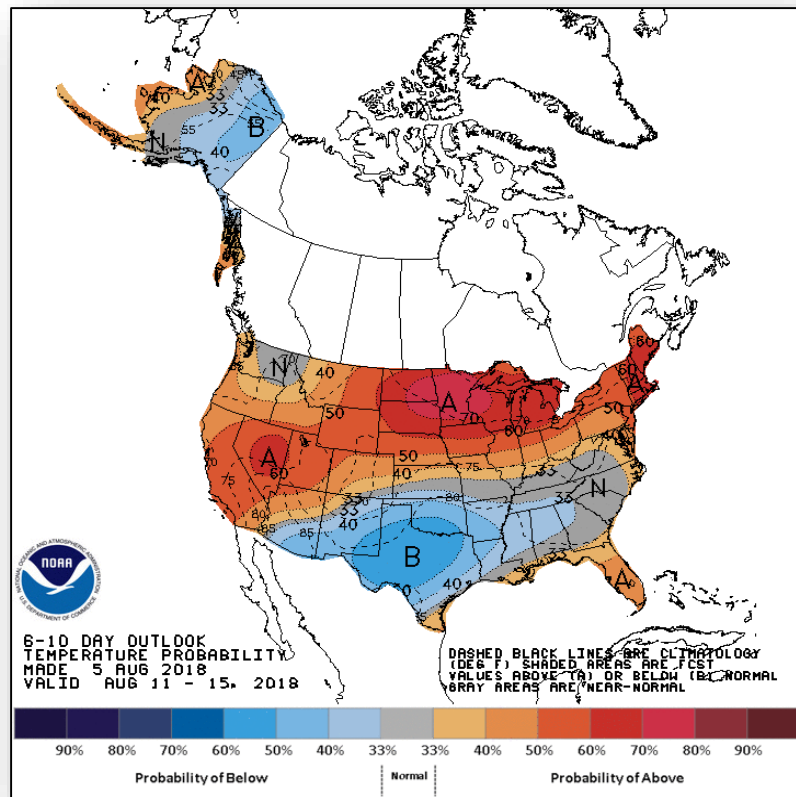


Tuesday

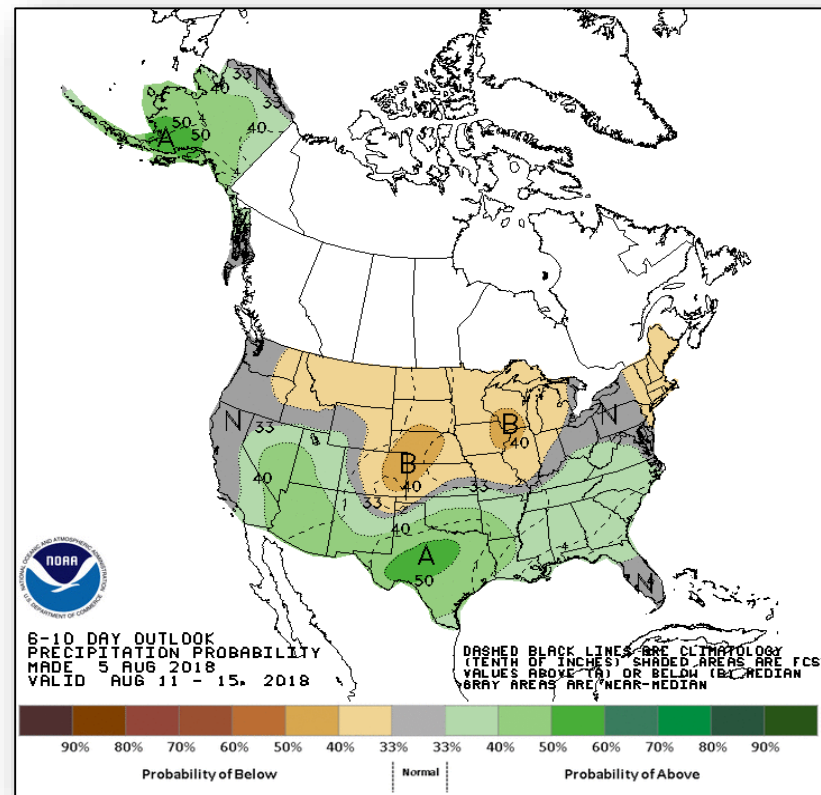
Long Range Outlooks – August 11-15



FEMA



Temperature Probability



Precipitation Probability

Joint Preliminary Damage Assessments



FEMA

Region	State / Location	Event	IA / PA	Number of Counties		Start – End
				Requested	Completed	
V	MN	Flooding June 15-July 8, 2018	IA	0	0	N/A
			PA	28 & 3 Tribes*	28 & 3 Tribes	7/19 – 8/3
VI	NM	Flooding July 5, 2018 and continuing	IA	3	3	7/31 – 8/4
			PA	0	0	N/A
VII	IA	Tornado July 19, 2018	IA	0	0	N/A
			PA	5	0	8/7 – TBD

**Red Lake Nation, White Earth Nation, and Leech Lake Band of Ojibwe*

Declaration Approved



FEMA

FEMA-4382-DR-CA

- The President approved a Major Disaster Declaration August 4, 2018 for the State of California
- For wildfires and high winds beginning July 23, 2018, and continuing
- Provides:
 - Individual and Public Assistance for Shasta County
 - Hazard Mitigation statewide
- FCO is William Roche



Disaster Requests & Declarations



FEMA

Declaration Requests in Process					Requests APPROVED (since last report)	Requests DENIED (since last report)
8	IA	PA	HM	Date Requested	1	0
SD – DR Severe Storms and Flooding		X	X	June 14, 2018		
MT – DR Flooding		X	X	June 18, 2018		
LA – DR Flooding		X	X	June 29, 2018		
AK – DR Flooding		X	X	June 28, 2018		
CT – DR Severe Storm, Tornado, and Straight-line Winds	X	X	X	July 9, 2018		
WI – DR Severe Storms, Straight-line Winds, and Flooding		X	X	July 20, 2018		
NC – DR Severe Storms, Flooding, Landslides, and Mudslides	X	X	X	July 30, 2018		
IA – DR Severe Storms, Tornadoes, Straight-Line Winds, and Flooding	X	X	X	August 1, 2018		
CA – DR Wildfires	X	X	X	August 4, 2018	Declared August 4, 2018	

Readiness – Deployable Teams and Assets



FEMA

Resource	Force Strength	Available	Deployed	Other	Cadres with 25% or Less Availability
IM Workforce	11,760 ▼	4,158 ▼ 35%	4,137 ▲	3,465	EHP 8% (32/393); ER 25% (9/36); HM 22% (214/971); OPS 20% (51/253); PA 13% (239/1,834); SEC 15% (15/102)
National IMATs* (3 Teams)	East 1: East 2: West:	B-48 Charlie B-2			
Regional IMATs (4 - 6 Teams)	Assigned: Available: PMC / NMC: Deployed:	13 5 4 4			
US&R (≥ 66%)	Assigned: Available: PMC / NMC: Deployed:	28 28 0 0			
MERS (≥ 66%)	Assigned: Available: PMC / NMC: Deployed:	36 33 (-2) 0 3 (+2)			
FCO (≤ 1 Type I)	Assigned: Available: PMC / NMC: Deployed:	33 14 1 18	<p>As of 3:00 a.m. EDT August 6, 2018</p>		
FDRC (≥ 3)	Assigned: Available: PMC / NMC: Deployed:	14 6 1 7			

* **B-2 Status:** Assemble ≤ 2-hrs, On Site ≤ 18-hrs; **B-48 Status:** Assemble and deploy ≤ 48hrs; **Charlie Status:** No team assemble time requirement

FEMA Readiness – Activation Teams



FEMA

Status		Activated Team	Activation Level	Activation Times	Reason / Comments
NWC (5 Teams)	Steady State				
NRCC (2 Teams)	Available				
HLT (1 Team)	Activated				
RWC / MOCs (10 Regions)	Steady State				
RRCCs (10 Regions)	Available				

Backup Regions: **IV, VIII, & V**



FEMA

**FEMA's mission is helping people
before, during, and after disasters.**