

The Disaster Center is dedicated to the idea that disaster mitigation is cost effective and individuals pursuing their own interest are the greatest potential force for disaster reduction.

Please consider making a small donation to the Disaster Center



When disaster mitigation is cost effective, we are on the road to bringing disasters to an end.



FEMA

Daily Operations Briefing

Saturday, August 8, 2015

8:30 a.m. EDT

Significant Activity: August 7-8



Significant Events:

- Typhoon Soudelor

Tropical Activity:

- Western Pacific: No activity affecting U.S. Territories
- Central Pacific: Hurricane Hilda; remnants of Guillermo
- Eastern Pacific: Disturbance 1 – Low (near 0%)
- Atlantic: Tropical cyclone activity not expected next 48 hours

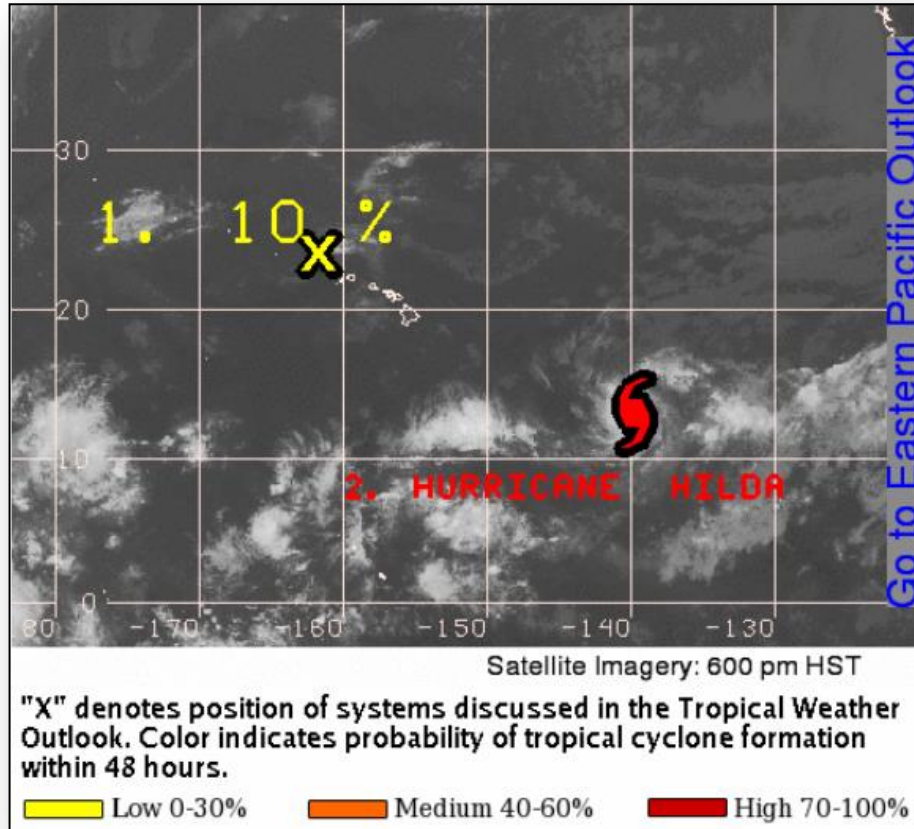
Significant Weather:

- Severe thunderstorms possible: Parts of the Central Plains, Southern Plains and Middle Mississippi Valley
- Flash flooding possible: Northern Plains and Middle Mississippi Valley
- Red Flag Warnings: None
- Elevated Fire Weather Areas: None
- Space Weather: Past 24 hours – minor; G1 geomagnetic storms occurred; next 24 hours – minor; G1 geomagnetic storms predicted

Declaration Activity:

- Major Disaster Declaration – West Virginia (FEMA-4236-FM-WV)
- Major Disaster Declaration – Oglala Sioux Tribe (FEMA-4237-FM-OTL)
- Major Disaster Declaration – Missouri (FEMA-4238-FM-MO)

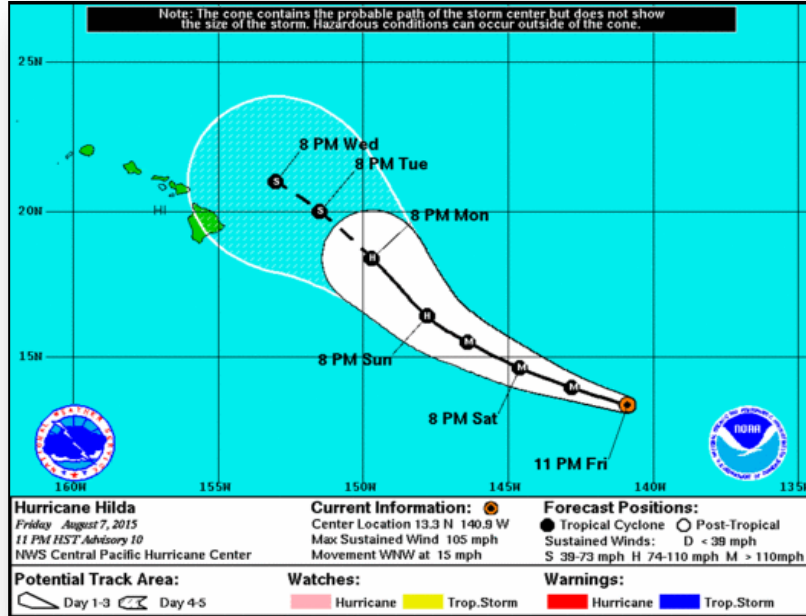
Tropical Outlook – Central Pacific



Disturbance 1: (as of 8:00 am EDT)

- Remnants of Guillermo located 220 miles WNW Kauai, HI
- Moving WNW near 15 mph
- Upper-level winds around the system not favorable for redevelopment
- Formation chance through 48 hours: Low (10%)

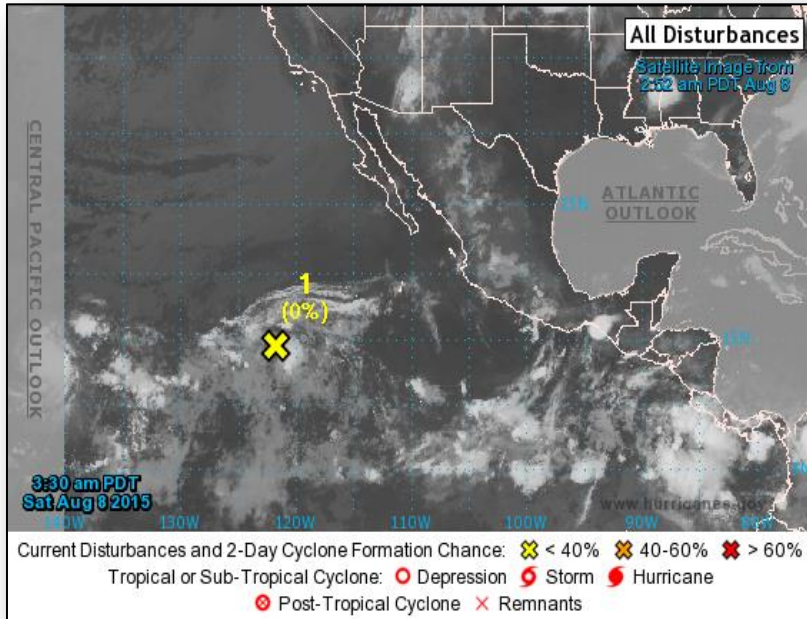
Central Pacific – Hurricane Hilda



Hurricane Hilda: (Advisory #10 as of 5:00 am EDT)

- Located 1,040 miles ESE of Hilo, HI
- Moving WNW at 15 mph
- Maximum sustained winds 105 mph (CAT 2)
- Some additional strengthening is forecast during the next 24 hours; a weakening trend is forecast to begin on Sunday
- Hurricane Force Winds extend up to 15 miles
- Tropical storm force winds extend up to 80 miles
- No coastal watches or warnings in effect

2-Day Tropical Outlook – Eastern Pacific



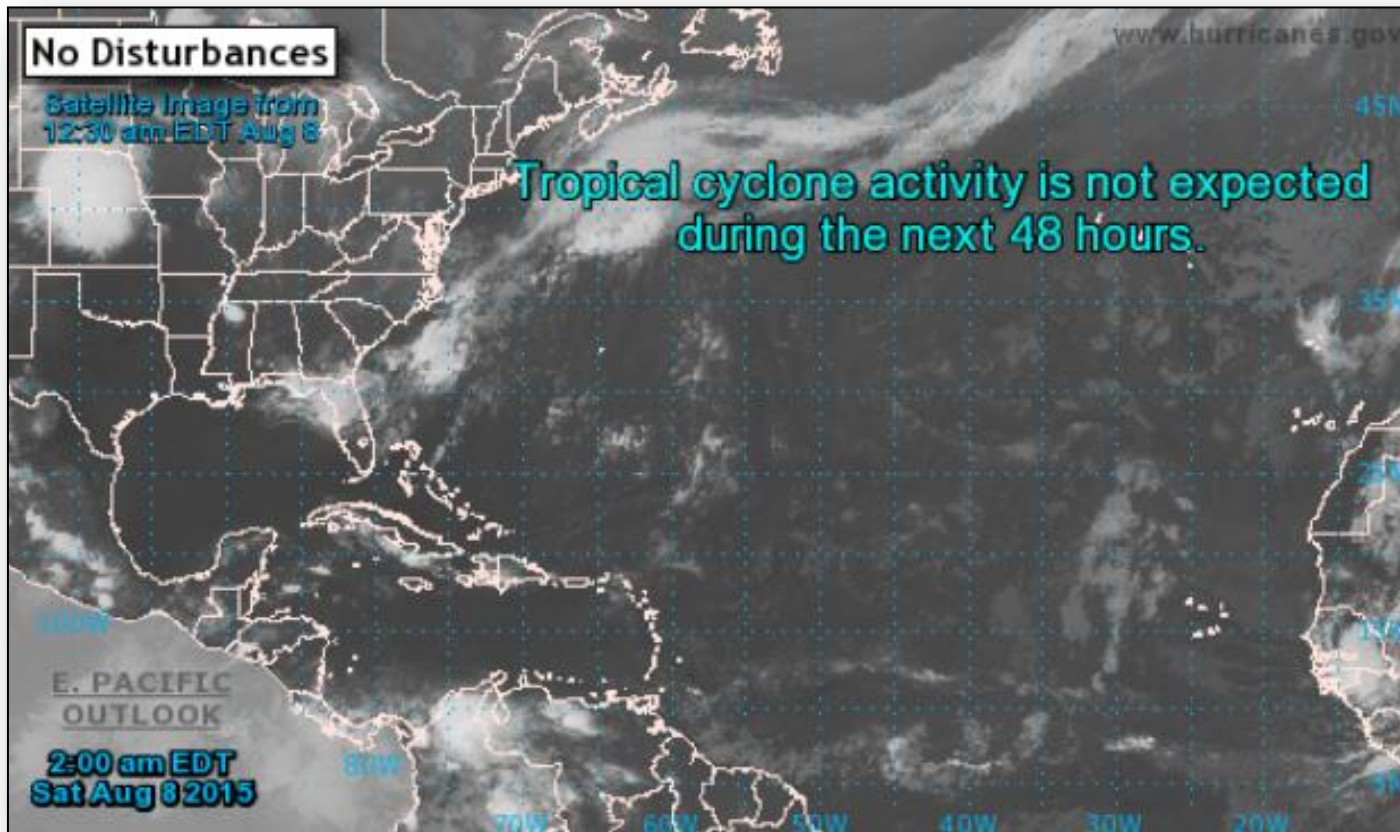
Disturbance 1: (as of 6:00 am EDT)

- Located 1,000 miles SW of southern tip of Baja California peninsula
- Continues to produce disorganized showers & thunderstorms
- Moving NW at 5-10 mph
- Some gradual development through early next week
- Formation chance through 48 hours: Low (near 0%)
- Formation chance through 5 days: Low (30%)

2-Day Tropical Outlook – Atlantic



FEMA



Wildfire Summary



FEMA

Fire Name (County)	FMAG #	Acres burned	% Contained Est. Containment date	Evacuations (Residents)	Structures Threatened	Structures Damaged/ Destroyed	Fatalities / Injuries
California (1)							
Rocky Fire <i>(Lake, Yolo, Colusa & Napa counties)</i>	FEMA-5093-FM-CA Approved August 2	69,600	50% (+5%)	Mandatory (1,468)	6,529 <i>(5,100 homes, 1,429 other)</i>	8 homes/ 43 homes	0/0
Oregon (1)							
Stouts Creek Fire <i>(Douglas County)</i>	FEMA-5092-FM-OR Approved July 31	20,807 (+836)	30% (+5%)	Advisory	322 <i>(317 homes/ 5 commercial)</i>	0/0	0/6
Washington (1)							
Highway 8 Fire <i>(Klickitat County)</i>	FEMA-5094-FM-WA Approved August 5	32,800 (+10,300)	60% (+35%)	Mandatory	350 homes	0/0	0/0

Disaster Requests & Declarations



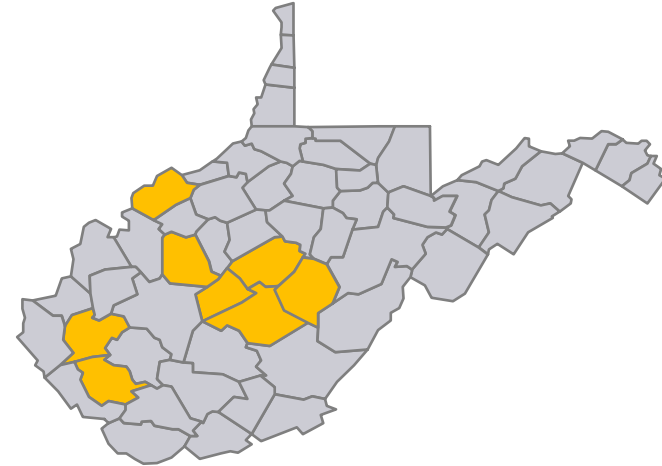
Declaration Requests in Process		Requests APPROVED (since last report)	Requests DENIED (since last report)
2	Date Requested	3	0
KY – DR Severe Storms, Tornadoes, Straight-line Winds, Flooding, and Mudslides	July 24, 2015		
AK – DR Wildfires	July 24, 2015		
MO – DR Severe Storms, Tornadoes, Straight-line Winds, and Flooding	July 21, 2015	August 7, 2015	
WV – DR Severe Storms, Straight-line Winds, Flooding, Mudslides, and Landslides	July 27, 2015	August 7, 2015	
Oglala Sioux Tribe (SD) – DR Severe Storms and Flooding	July 29, 2015	August 7, 2015	

Major Disaster Declaration Approved – WV



FEMA-4236-DR-WV

- Major Disaster Declaration approved August 7, 2015
- Due to Severe Storms, Straight-line Winds, Flooding, Landslides, and Mudslides during the period July 10-14, 2015
- Provides:
 - Public Assistance for 8 counties
 - Hazard Mitigation statewide
- Federal Coordinating Officer is Regis Leo Phelan



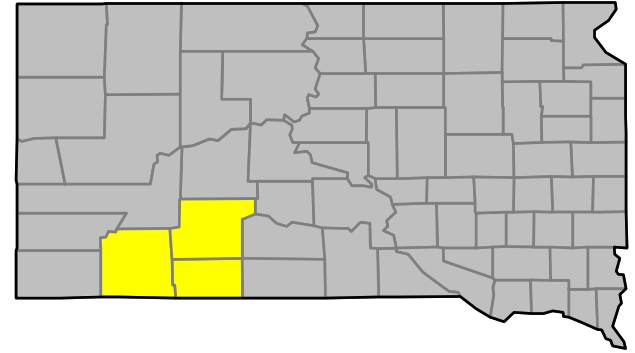
■ Designated PA counties

Major Disaster Declaration Approved – Oglala Sioux



FEMA-4237-DR-Oglala Sioux

- Major Disaster Declaration approved August 7, 2015
- Due to Severe Storms, Straight-line Winds, and Flooding during the period May 8-29, 2015
- Provides:
 - Individual Assistance for members of the Oglala Sioux Tribe of the Pine Ridge Indian Reservation
 - Hazard Mitigation for the Oglala Sioux Tribe of the Pine Ridge Indian Reservation
- Federal Coordinating Officer is Gary R. Stanley



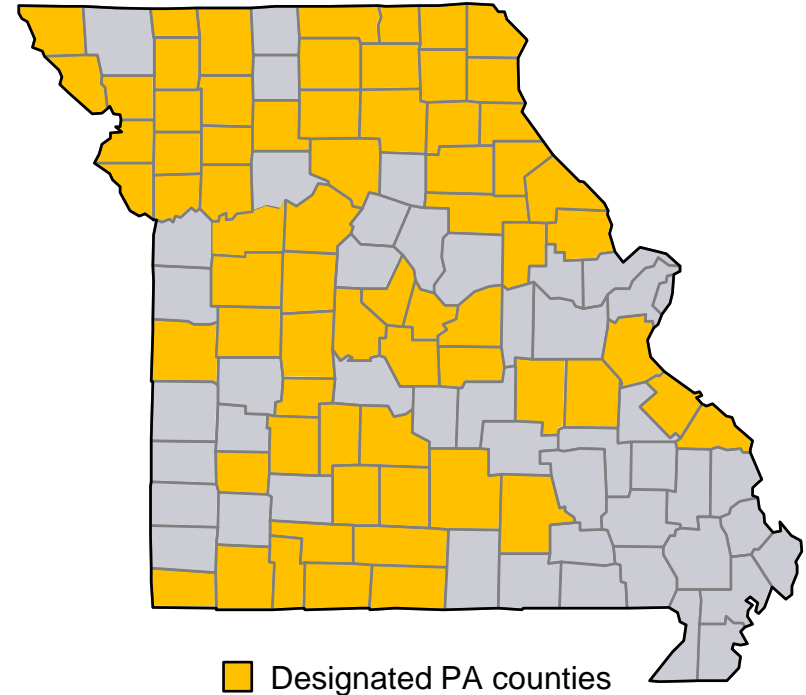
■ Designated IA Oglala Sioux Tribe
(Pine Ridge Reservation spread
across three SD counties)

Major Disaster Declaration Approved - MO

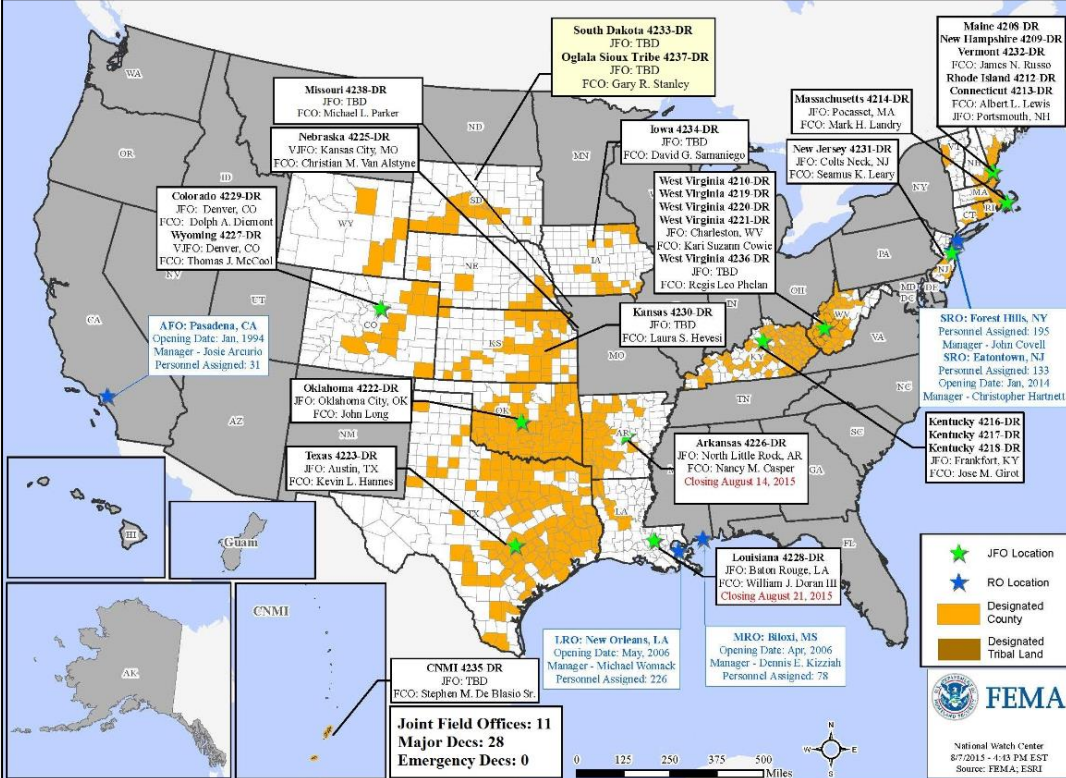


FEMA-4238-DR-MO

- Major Disaster Declaration approved August 7, 2015
- For Severe Storms, Tornadoes, Straight-line Winds, & Flooding during the period May 15 – July 27, 2015
- Provides:
 - Public Assistance for 68 counties
 - Hazard Mitigation statewide
- Federal Coordinating Officer is Michael L. Parker



Open Field Offices as of August 8

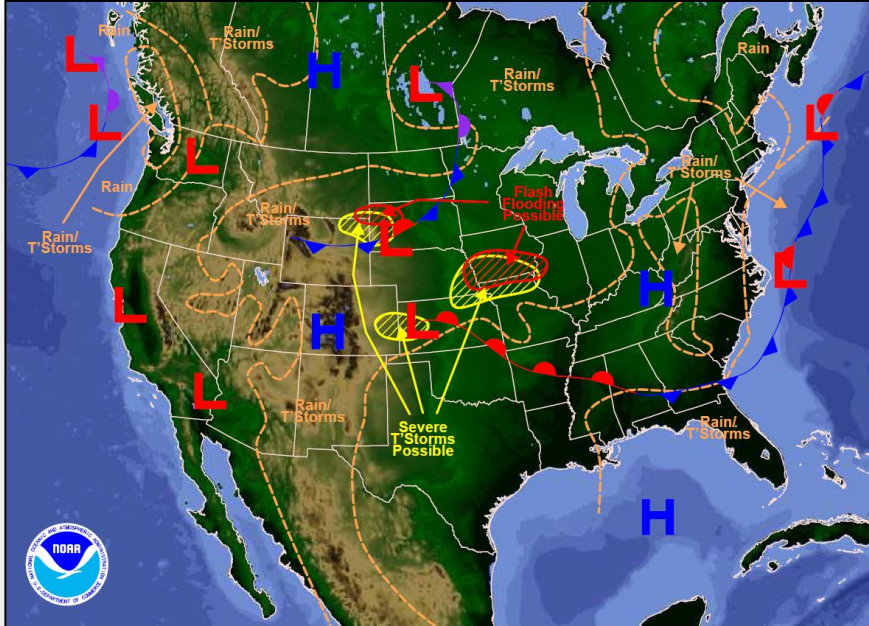


Joint Preliminary Damage Assessments



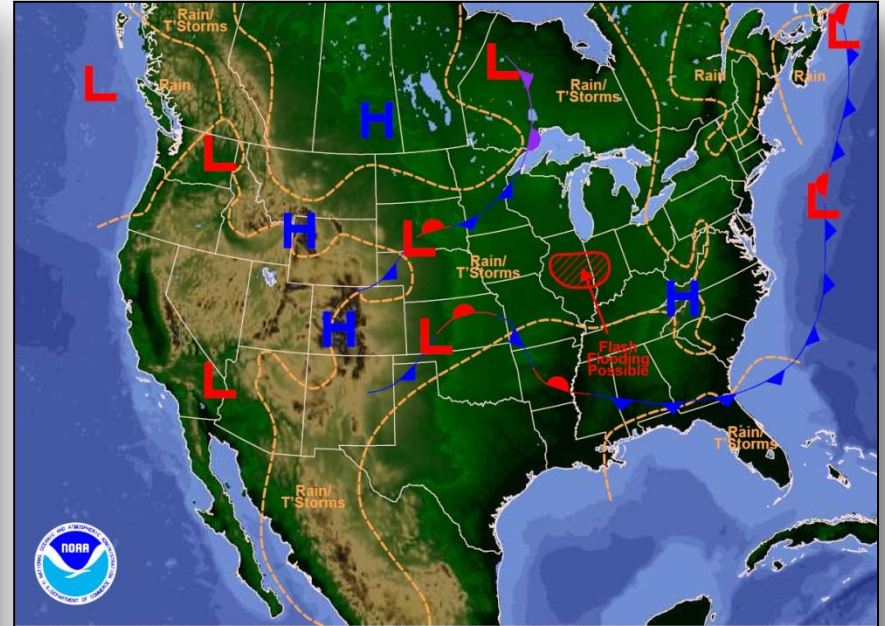
Region	State / Location	Event	I/PA	Number of Counties		Start – End
				Requested	Complete	
IV	KY	Severe Storms & Flooding July 13-15, 2015	IA	4	4	7/18 – 7/23
			PA	34	30	7/27 – TBD
V	IL	Severe Weather June-July 2015	IA	7	0	8/6 - TBD
			PA	23	0	8/10 - TBD
IX	CNMI	Typhoon Soudelor August 1-3	IA	3	3	8/5 – 8/6
			PA	3	3	8/5 – 8/6

National Weather Forecast



Weather Forecast for Sat, Aug 08, 2015, issued 4:47 AM EDT
DOC/NOAA/NWS/NCEP/Weather Prediction Center
Prepared by Kong based on WPC, SPC and NHC forecasts

Today



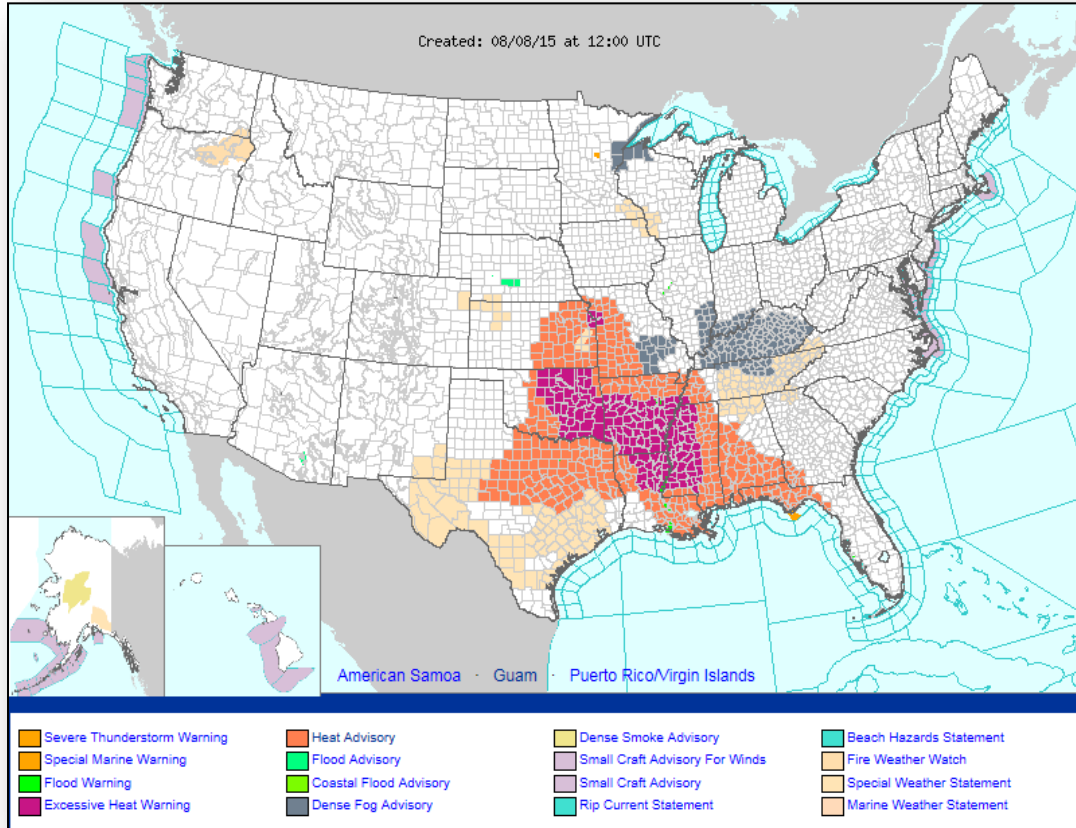
Weather Forecast for Sun, Aug 09, 2015, issued 4:50 AM EDT Sat, Aug 08, 2015
DOC/NOAA/NWS/NCEP/Weather Prediction Center
Prepared by Kong based on WPC, SPC and NHC forecasts

Tomorrow

Active Watches/Warnings



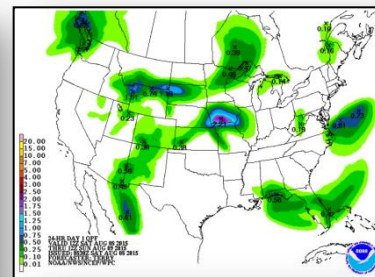
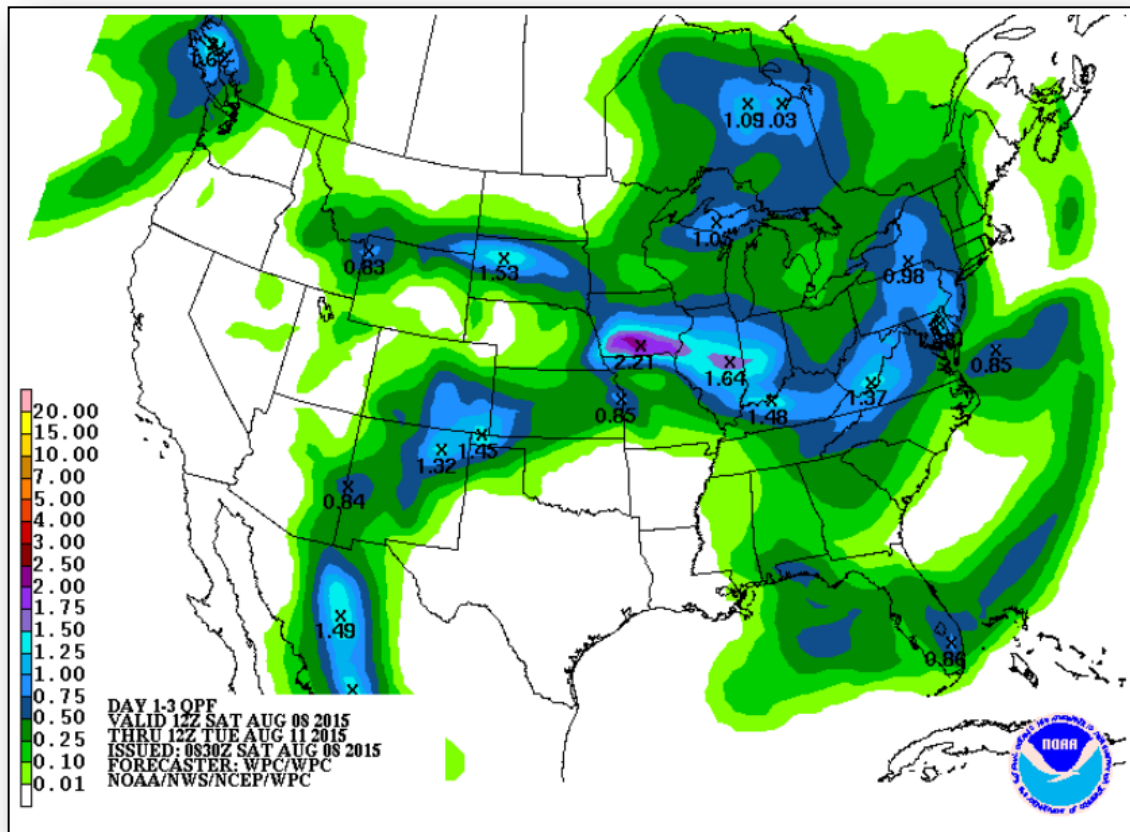
FEMA



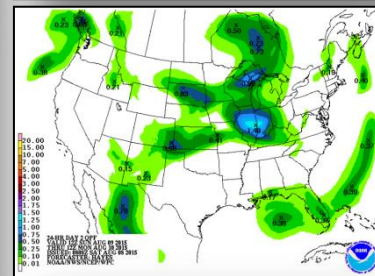
Precipitation Forecast, 1 – 3 Day



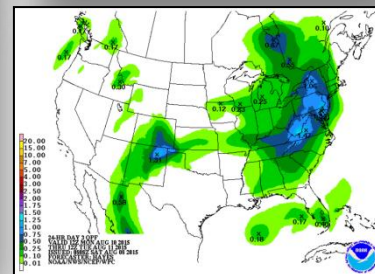
FEMA



Day 1

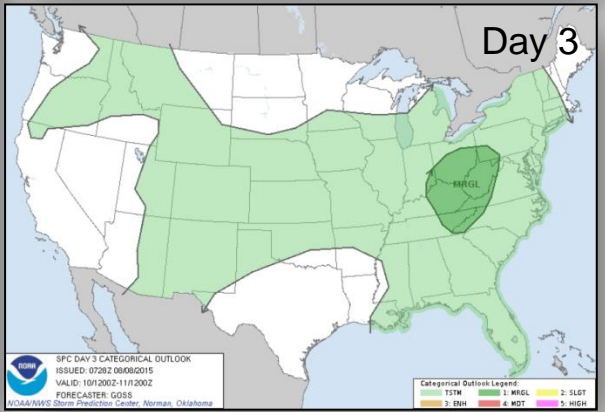
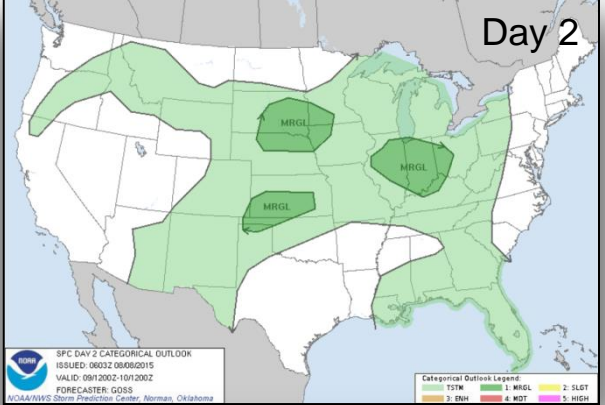
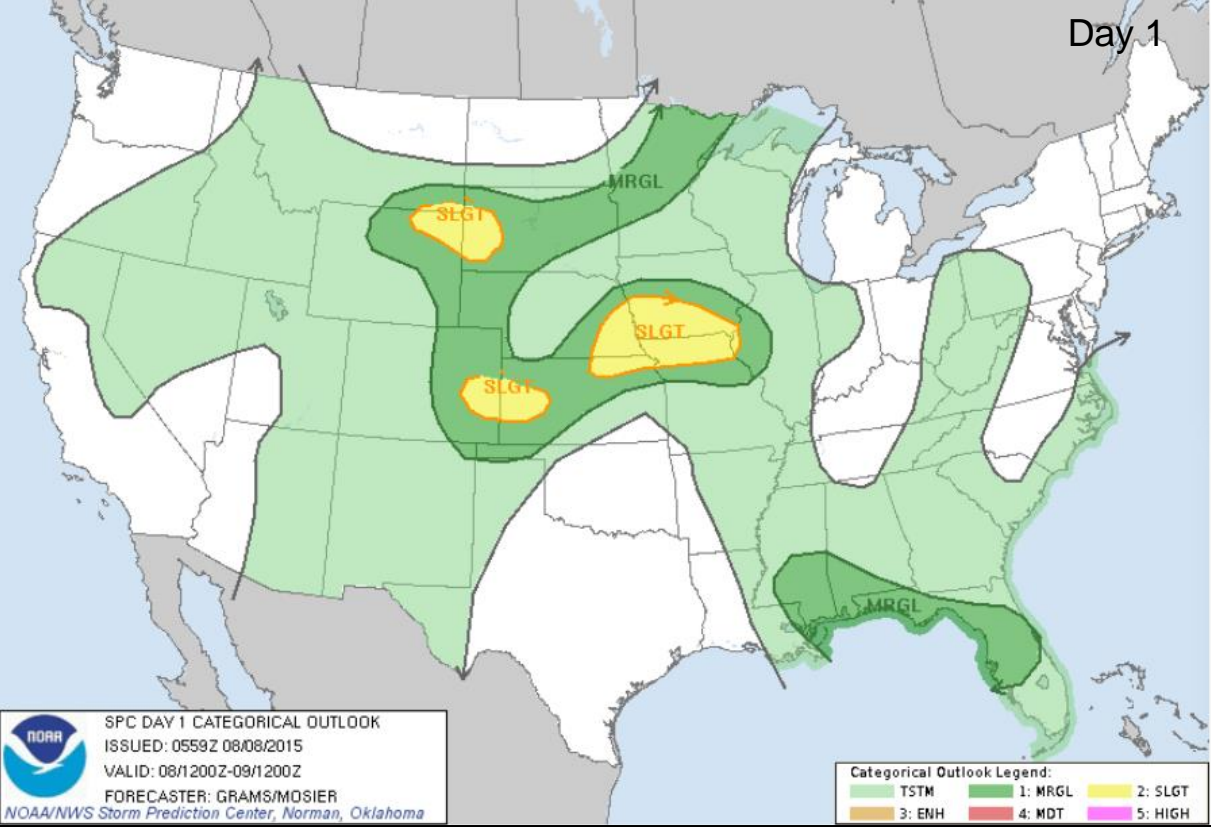


Day 2

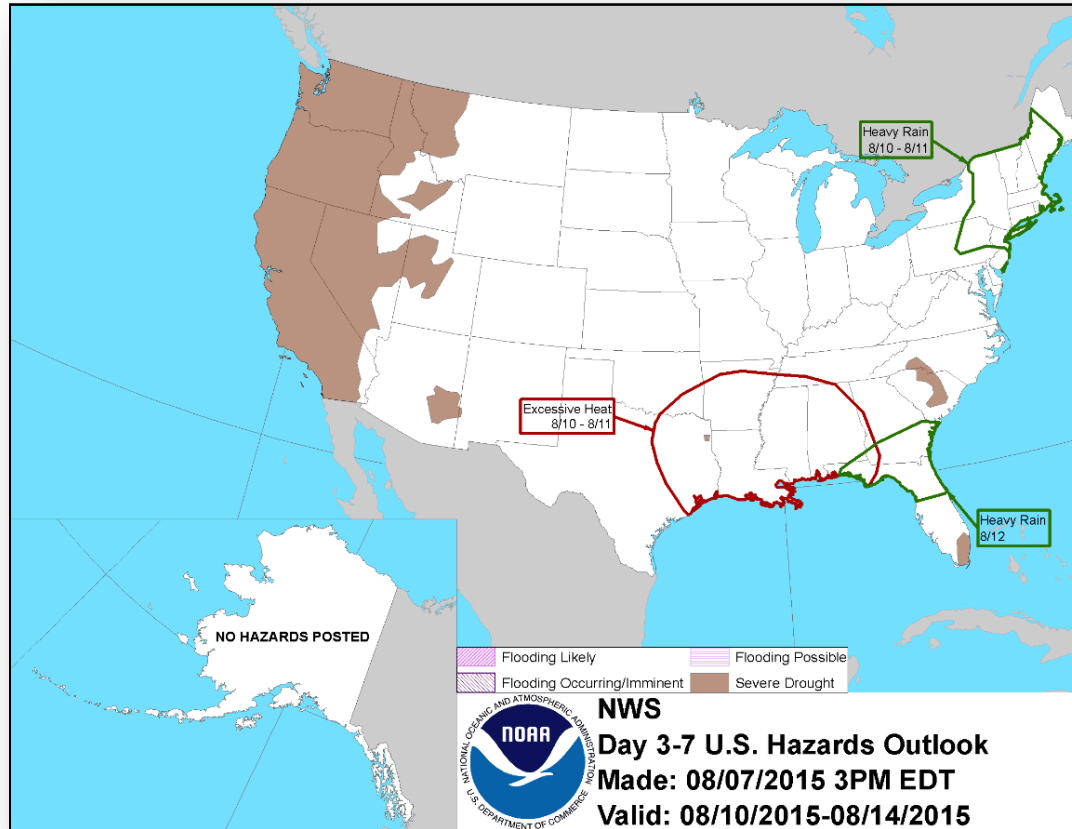


Day 3

Severe Weather Outlook, Days 1 – 3

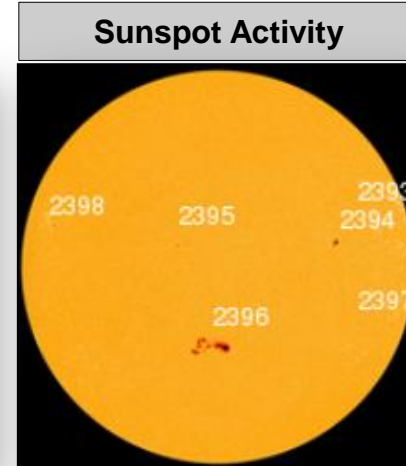
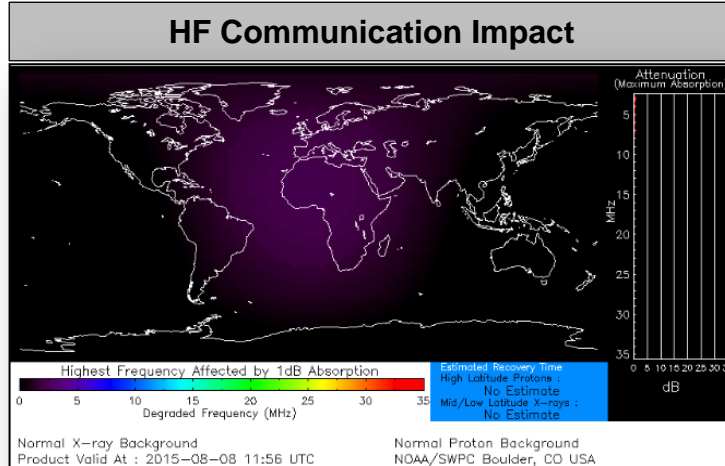


Hazard Outlook, August 9 – 13



Space Weather

	Past 24 Hours	Current	Next 24 Hours
Space Weather Activity:	Minor	None	Minor
• Geomagnetic Storms	G1	None	G1
• Solar Radiation Storms	None	None	None
• Radio Blackouts	None	None	None



FEMA Readiness – Deployable Teams /Assets



Deployable Teams/Assets									
Resource	Status	Total	FMC Available		Partially Available	Not Available	Detailed, Deployed, Activated	Comments	Rating Criterion
FCO	Green	35	12	34%	0	1	22		OFDC Readiness: FCO Green Yellow Red Type 1 3+ 2 1 Type 2 4+ 3 2 Type 3 4 3 2 FDRC 3 2 1
FDRC	Green	9	6	67%	0	0	5		
US&R	Green	28	27	96%	0	1	0	NM-TF1 (Red) – Personnel shortages	<ul style="list-style-type: none"> Green = Available/FMC Yellow = Available/PMC Red = Out-of-Service Blue = Assigned/Deployed
National IMAT	Green	3	3	100%	0	0	0		<ul style="list-style-type: none"> Green: 3 avail Yellow: 1-2 avail Red: 0 avail (<i>Individual N-IMAT red if 50% of Section Chiefs and/or Team Leader is unavailable for deployment.</i>)
Regional IMAT	Yellow	13	4	31%	0	1	8	<p>Deployed (Blue): RI to NH/MA Aug 6 - TBD (training) RII (Team A) supporting FEMA-4223-DR-TX RV to RVI supporting severe weather/flooding RVI (Team 1 & 2) to TX & personnel to OK RVIII (Team 1) supporting FEMA-4227-DR-WY & FEMA-4229-DR-CO RIX (Team 1 & 2) Deployed to Guam & CNMI</p> <p>Not Mission Capable (Red): Personnel shortages/staff adjustments RIV (Team 3)</p>	<ul style="list-style-type: none"> Green: 7 or more avail Yellow: 4 - 6 teams available Red: > 8 teams deployed/unavailable <p><i>R-IMAT also red if TL Ops/Log Chief is unavailable & has no qualified replacement</i></p>
MCOV	Yellow	60	38	63%	0	9	13	13 units in TX	<ul style="list-style-type: none"> Green = 80 – 100% avail Yellow = 60 – 79% avail Red = 59% or below avail Readiness remains 95%

FEMA Readiness – National/Regional Teams



National/Regional Teams									
Resource	Status	Total	FMC Available		Partially Available	Not Available	Status	Comments	Rating Criterion
NWC		5	5	100%	0	0	Activated	Enhanced Watch (24/7)	<ul style="list-style-type: none"> • Green = FMC • Yellow = PMC • Red = NMC
NRCC		2	344	89%	0	44	Not Activated		
HLT		1	N/A	N/A	0	0	Activated		
DEST							Not Activated		
RRCCs		10	10	100%	0	0	Activated	Region IX RRCC Level II (24/7) W/ select ESFs	
RWCs/MOCs		10	10	100%	0	0	Not Activated		



FEMA

FEMA's mission is to support our citizens and first responders to ensure that as a nation we work together to build, sustain, and improve our capability to prepare for, protect against, respond to, recover from, and mitigate all hazards.