

The Disaster Center is dedicated to the idea that disaster mitigation is cost effective and individuals pursuing their own interest are the greatest potential force for disaster reduction.

Please consider making a small donation to the Disaster Center



When disaster mitigation is cost effective, we are on the road to bringing disasters to an end.



FEMA

Daily Operations Briefing

Sunday, August 9, 2015

8:30 a.m. EDT

Significant Activity: August 8-9



Significant Events:

- Typhoon Soudelor

Tropical Activity:

- Atlantic: Tropical cyclone activity not expected next 48 hours
- Eastern Pacific: Disturbance 1 – Low (20%)
- Central Pacific: Hurricane Hilda; Disturbance 1 (remnants of Guillermo) – Low (near 0%)
- Western Pacific: No activity affecting U.S. territories

Significant Weather:

- Flash flooding possible: Central/Southern Rockies to Central/Southern Plains
- Rain and thunderstorms: Northern Intermountain to Northern Plains; Central Great Basin; Southwest to Upper Mississippi Valley; Eastern third of U.S.
- Red Flag Warnings: OR & WA
- Elevated Fire Weather Areas: None; isolated dry thunderstorms: OR, WA, ID & MT
- Space Weather: Past 24 hours – none; next 24 hours – minor, G1 geomagnetic storms likely

Typhoon Soudelor (13W) – Response



Situation:

- Power, water, wastewater services, & communications spotty/intermittent; full power restoration could take over a month
- FEMA Air bridge between Saipan and Guam established via C-130's for Aug 9-12; will continue flow of generator sets and commodities; **USS Ashland arrived Aug 7; all generators off loaded; USS Greenbay expected to arrive Aug 11**
- 12 water wells are operational – (25% of the population having piped water, including the hospital)
- Commonwealth Utility Corporation has opened four water filling stations; will open another on Sunday
- CNMI EOC Public Health reports no fatalities & 20-40 injured
- 9 shelters open on Saipan with **537 (-52)** occupants
- All CNMI airports and seaports open
- PDAs completed August 6

Territory Response:

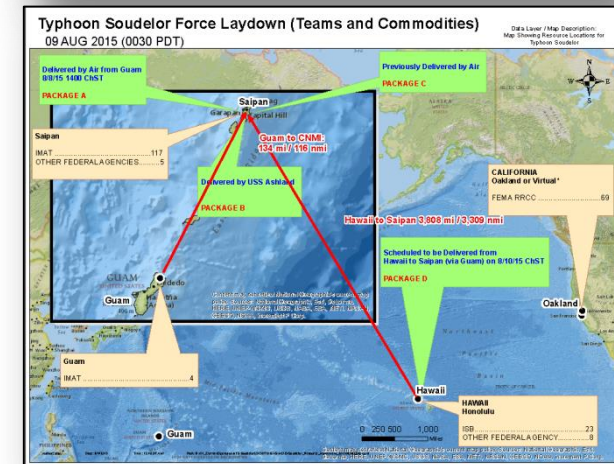
- CNMI EOC is Fully Activated (dayshift only)

FEMA Region IX Response:

- RRCC: Level II (24/7) w/ESFs 1,3, 7, 8, 10, 12, PSA, & DCE support
- R IX IMATs 1 & 2 w/ESFs 3, 8, & 12; LNOs (2), MERS (2), DEC, COML & Mass Care Specialist deployed to Guam/CNMI; **Demobilization plan being discussed with RRCC & FCO**

FEMA HQ Response:

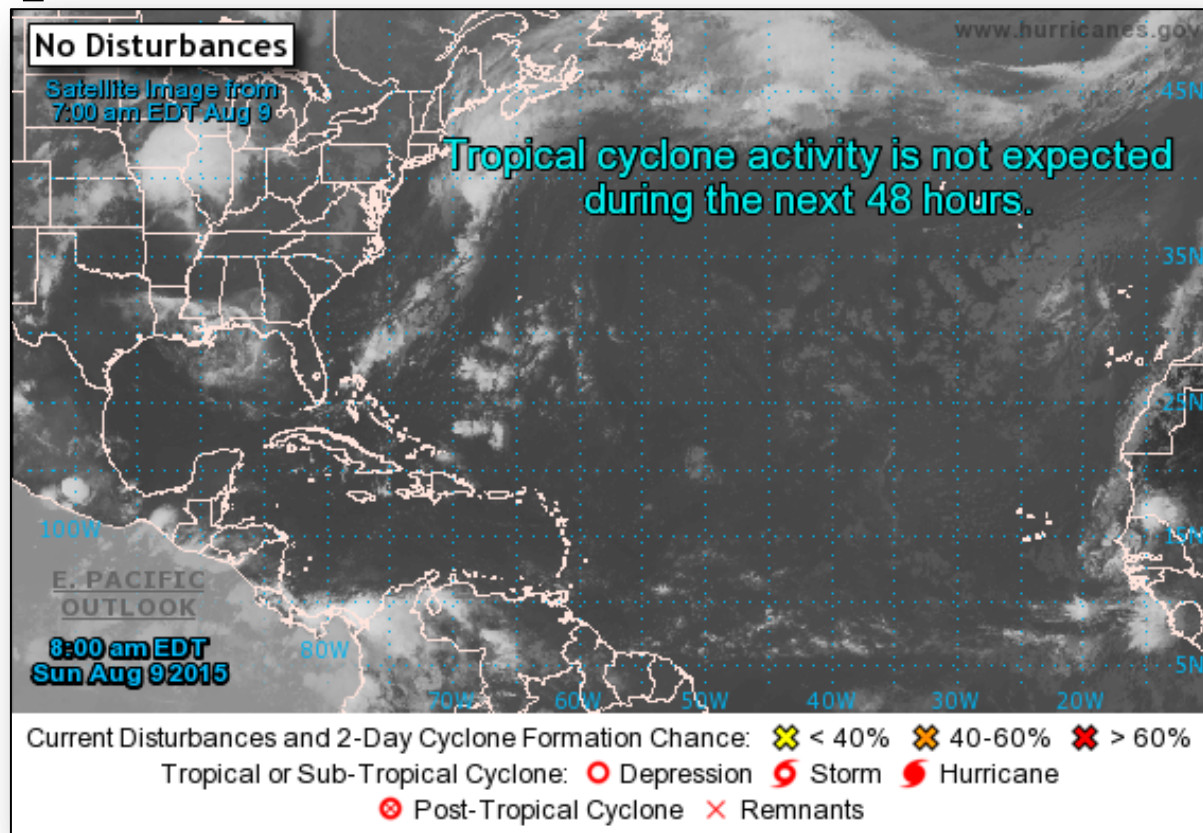
- FEMA-4235-DR-CNMI approved Aug 5, 2015; IOF established in Susupe, Saipan
- NRCC not activated; NWC at Enhanced Watch (24/7)
- FEMA HQ, USACE, & Region IX IMATs/RRCC coordinating generator requirements & placement
- FEMA Logistics: DC Guam primary for resource support; DC HI assisting
 - FSA at Saipan Army Reserve Base; ISB/FSA Alpha Team deployed to Guam (9); DC HI (6)



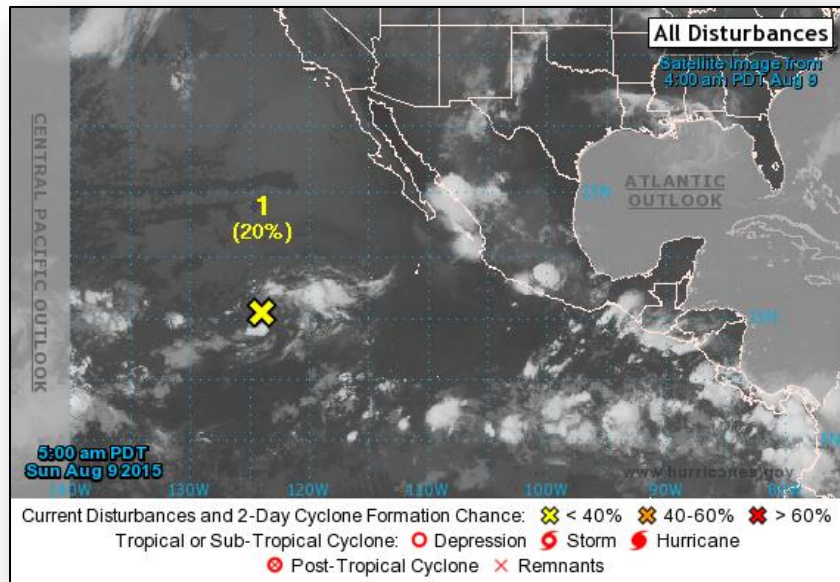
2-Day Tropical Outlook – Atlantic



FEMA



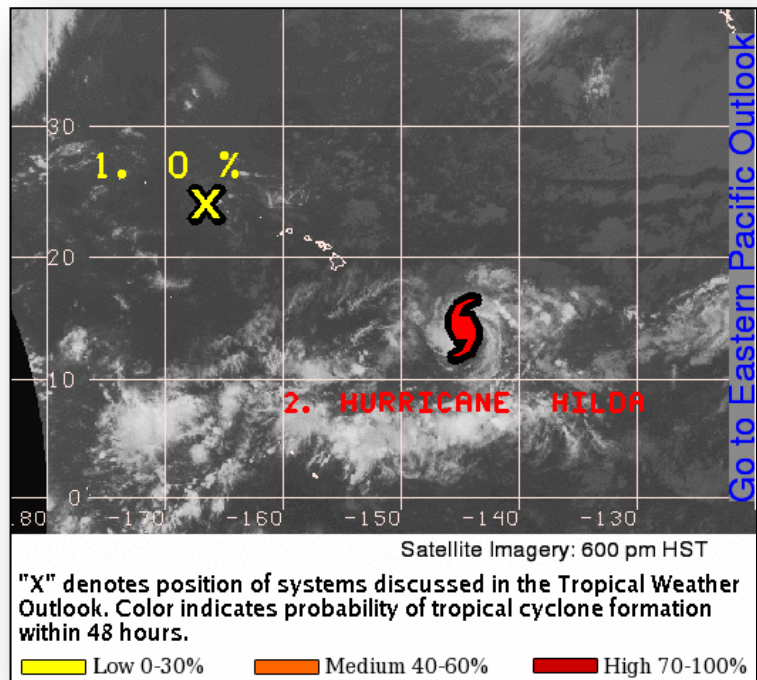
2-Day Tropical Outlook – Eastern Pacific



Disturbance 1: (as of 8:00 a.m. EDT)

- Located 1,000 miles WSW of southern tip of Baja California peninsula
- Moving W at 10 mph
- Some development still possible next day or two
- Drier air and unfavorable upper-level winds expected to inhibit development
- Formation chance through 48 hours: Low (20%)
- Formation chance through 5 days: Low (20%)

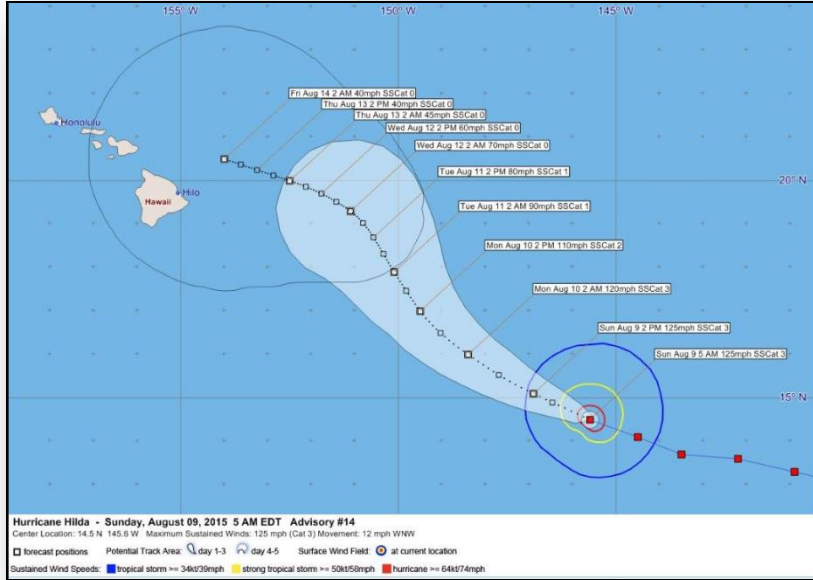
Tropical Outlook – Central Pacific



Disturbance 1: (as of 2:00 a.m. EDT)

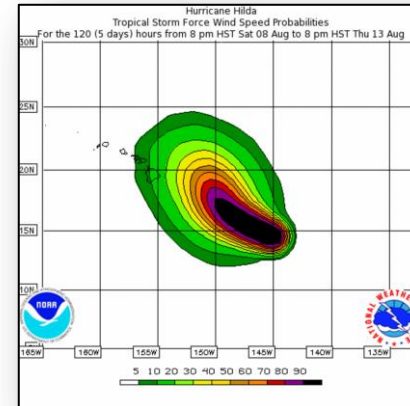
- Remnants of Guillermo located 440 miles WNW of Kauai, HI
- Moving WNW at 20 mph
- Upper-level winds not favorable for redevelopment
- Formation chance through 48 hours: Low (near 0%)

Central Pacific – Hurricane Hilda



Hurricane Hilda: (Advisory #14 as of 5:00 a.m. EDT)

- Located 720 miles ESE of Hilo, HI
- Moving WNW at 12 mph
- Expected to gradually turn NW and slow in forward speed next couple of days
- Maximum sustained winds 125 mph (Cat 3)
- Some fluctuations in intensity possible today, followed by gradual weakening tonight, with more significant weakening on Mon
- Hurricane force winds extend 25 miles
- Tropical storm force winds extend 125 miles
- No coastal watches or warnings in effect

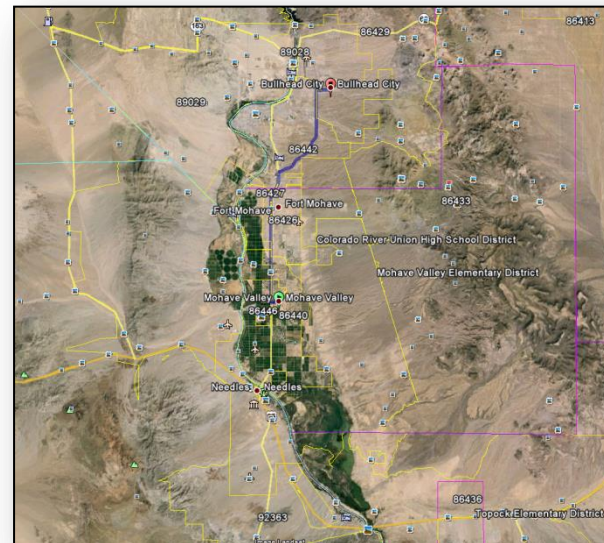


Willow Fire – AZ



Fire Name (County)	Location	Acres burned	% Contained	Est. Full Containment	FMAG	Structures Lost / Threatened	Fatalities / Injuries
Willow Fire (Mohave County)	Mohave Valley	1,800	0%	Unknown	Approved August 8, 2015	0/150	0/0

- The fire began August 8, 2015 near Mohave Valley south of Bull head City (Mohave County)
- Threatening 150 primary homes in Topack Lake Ranchos and Delta City (pop. 350-400)
- Potential to threaten additional 100 primary homes in Agua View Estates
- Mandatory evacuations in effect of for 350-400 residents
- 1 shelter open with 2 occupants
- AZ EOC at Watch/Steady State; no shortfalls
- FEMA Region IX RRCC at Level II, 24/7 (for Typhoon Soudelor)

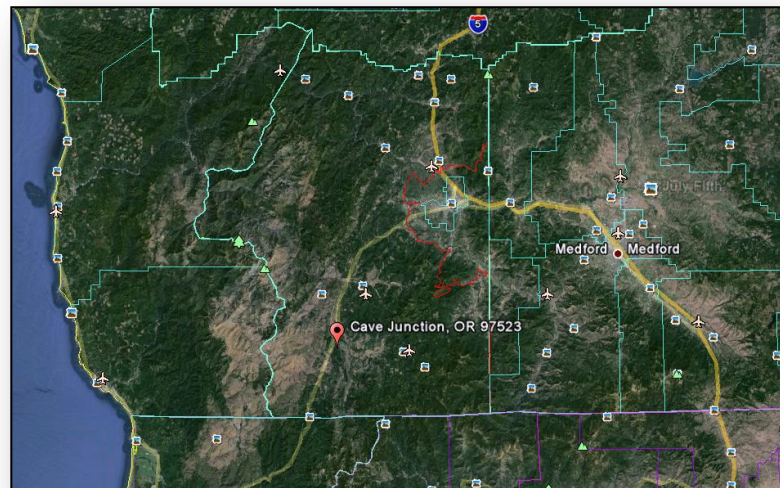


Krauss Lane Fire – OR



Fire Name (County)	Location	Acres burned	% Contained	Est. Full Containment	FMAG	Structures Lost / Threatened	Fatalities / Injuries
Krauss Lane Fire (Josephine County)	Cave Junction	100	0%	Unknown	Approved August 9, 2015	2 homes/533 (366 homes)	0/0

- The fire began August 8, 2015 about 5 miles south of Cave Junction, OR (pop 1,871)
- 2 primary homes destroyed; threatening 255 primary homes, 111 secondary homes, and 167 structures
- Mandatory evacuations in effect
- 1 shelter open with unknown number of occupants
- Numerous local roads, bridges, and utilities are closed
- OR EOC is at Partial Activation w/ most ESFs staffed (daytime only) for wildfire support statewide; no shortfalls
- FEMA Region X is not activated



Wildfire Summary



Fire Name (County)	FMAG #	Acres burned	% Contained Est. Containment date	Evacuations (Residents)	Structures Threatened	Structures Damaged/ Destroyed	Fatalities / Injuries
Arizona (1)							
Willow Fire (Mohave County)	FEMA-XXXX-FM-AZ Approved August 8	1,800	0%	Mandatory (350-400)	150 homes	0/0	0/0
California (1)							
Rocky Fire <i>(Final)</i> (Lake, Yolo, Colusa & Napa counties)	FEMA-5093-FM-CA Approved August 2	69,636 (+36)	70% (+20%)	Lifted	6,529 (5,100 homes, 1,429 other)	8/96	0/0
Oregon (2)							
Stouts Creek Fire (Douglas County)	FEMA-5092-FM-OR Approved July 31	21,858 (+1,051)	35% (+5%)	Advisory	163 (-159) (158 homes / 5 commercial)	0/0	0/7(+1)
Krauss Lane Fire (Josephine County)	FEMA-XXXX-FM-OR Approved August 9	100	0%	Mandatory	533 (366 homes)	0/2	0/0
Washington (1)							
Highway 8 Fire <i>(Final)</i> (Klickitat County)	FEMA-5094-FM-WA Approved August 5	32,900 (+100)	75% (+15%)	Mandatory (40)	40 homes	0/0	0/0

Disaster Requests & Declarations

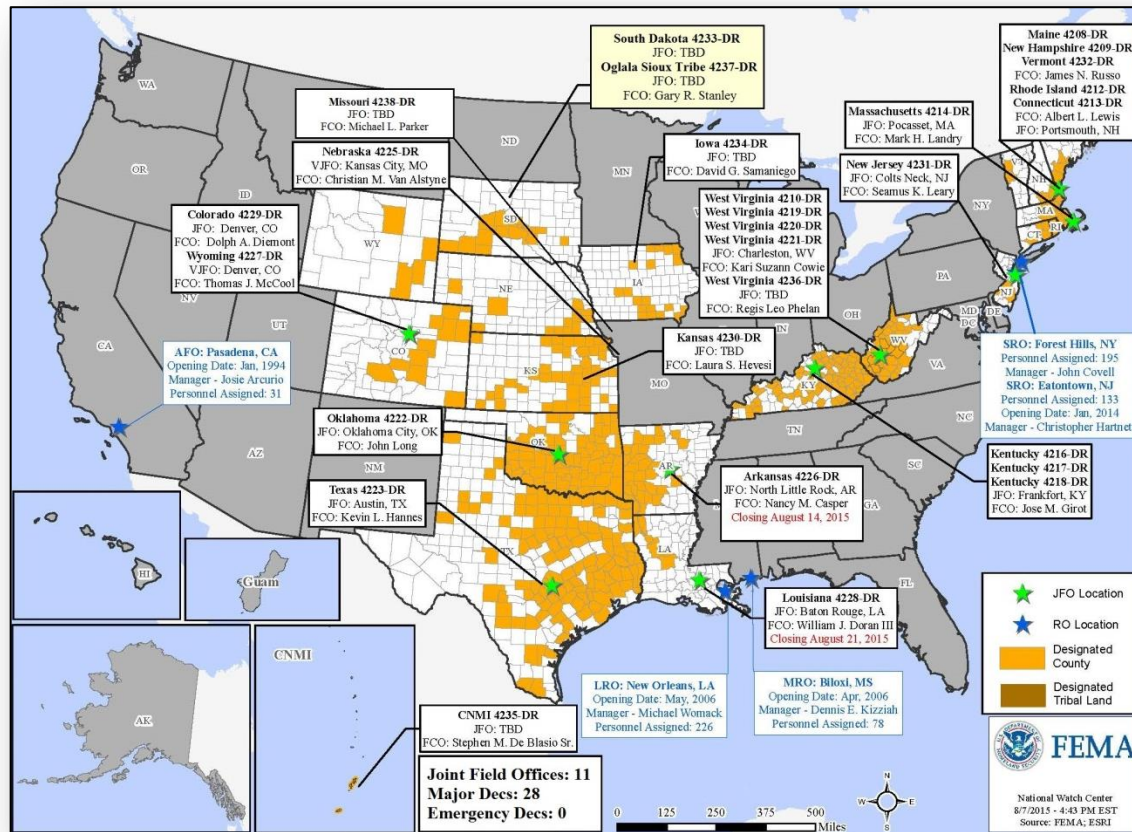


Declaration Requests in Process		Requests APPROVED (since last report)	Requests DENIED (since last report)
2	Date Requested	3	0
KY – DR Severe Storms, Tornadoes, Straight-line Winds, Flooding, and Mudslides	July 24, 2015		
AK – DR Wildfires	July 24, 2015		
MO – DR Severe Storms, Tornadoes, Straight-line Winds, and Flooding	July 21, 2015	August 7, 2015	
WV – DR Severe Storms, Straight-line Winds, Flooding, Mudslides, and Landslides	July 27, 2015	August 7, 2015	
Oglala Sioux Tribe (SD) – DR Severe Storms and Flooding	July 29, 2015	August 7, 2015	

Open Field Offices as of August 9



FEMA

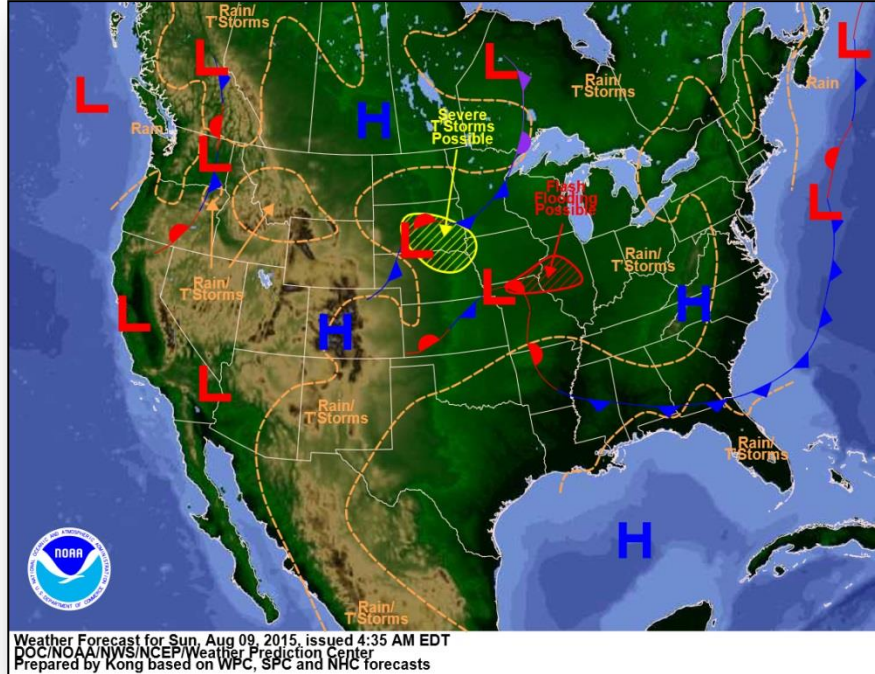


Joint Preliminary Damage Assessments

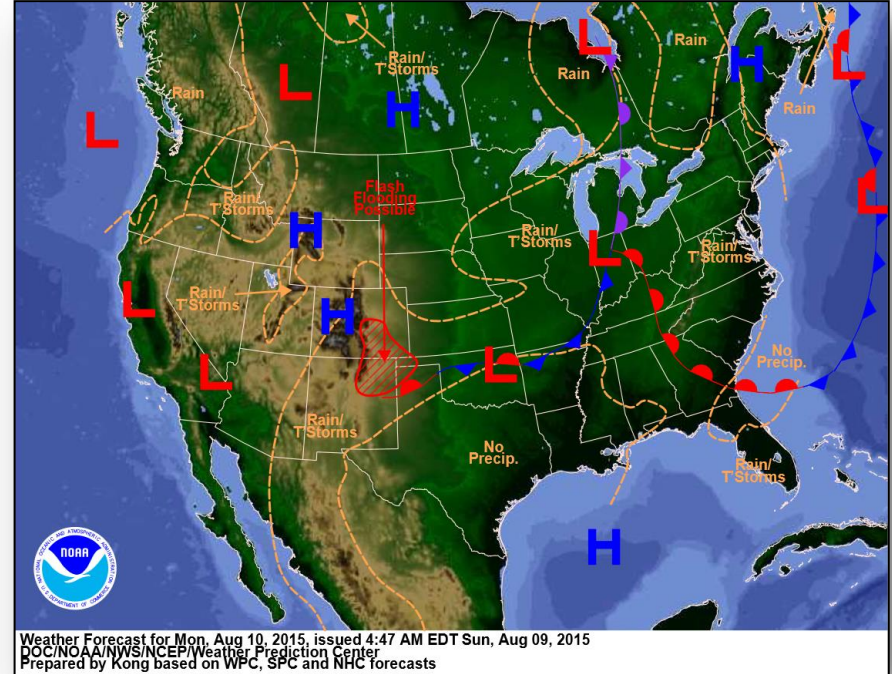


Region	State / Location	Event	I/PA	Number of Counties		Start – End
				Requested	Complete	
IV	KY	Severe Storms & Flooding July 13-15, 2015	IA	4	4	7/18 – 7/23
			PA	34	34 (+4)	7/27 – 8/6
V	IL	Severe Weather June-July 2015	IA	7	1 (+1)	8/6 - TBD
			PA	23	0	8/10 - TBD
IX	CNMI	Typhoon Soudelor August 1-3	IA	3	3	8/5 – 8/6
			PA	3	3	8/5 – 8/6

National Weather Forecast



Today

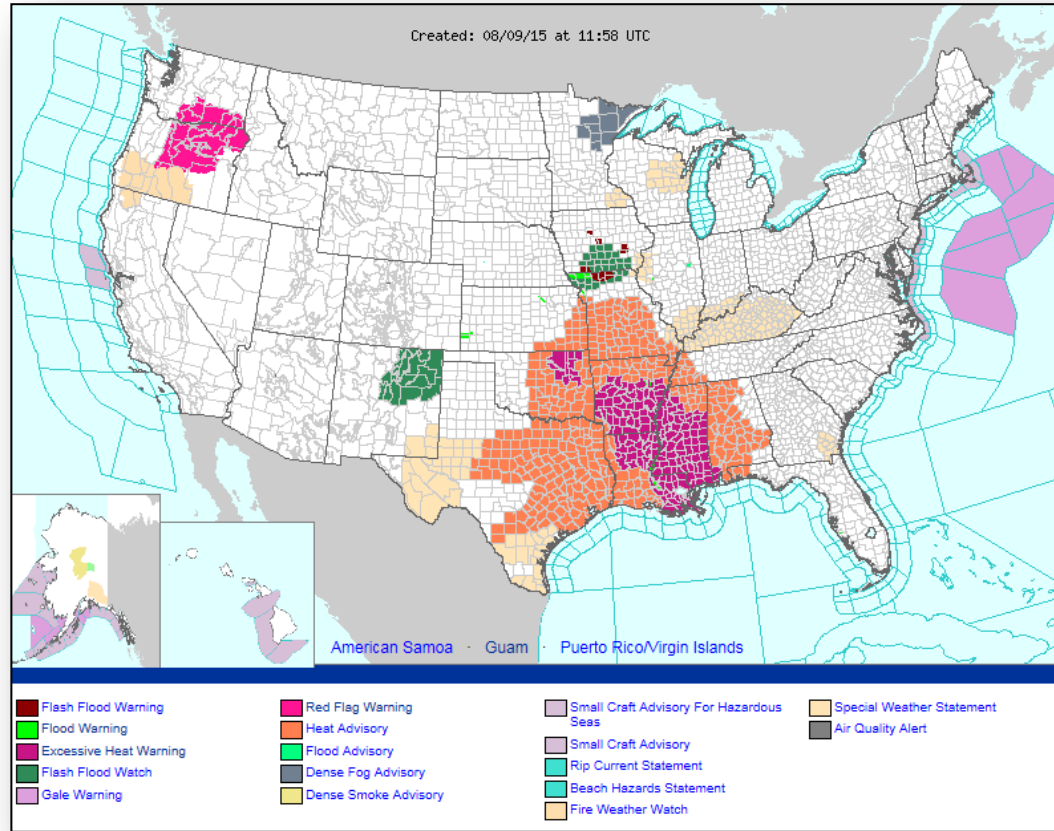


Tomorrow

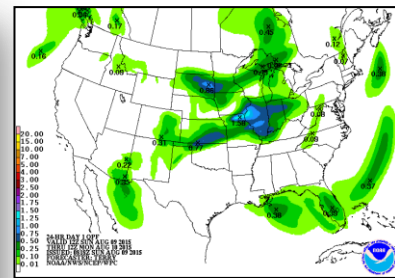
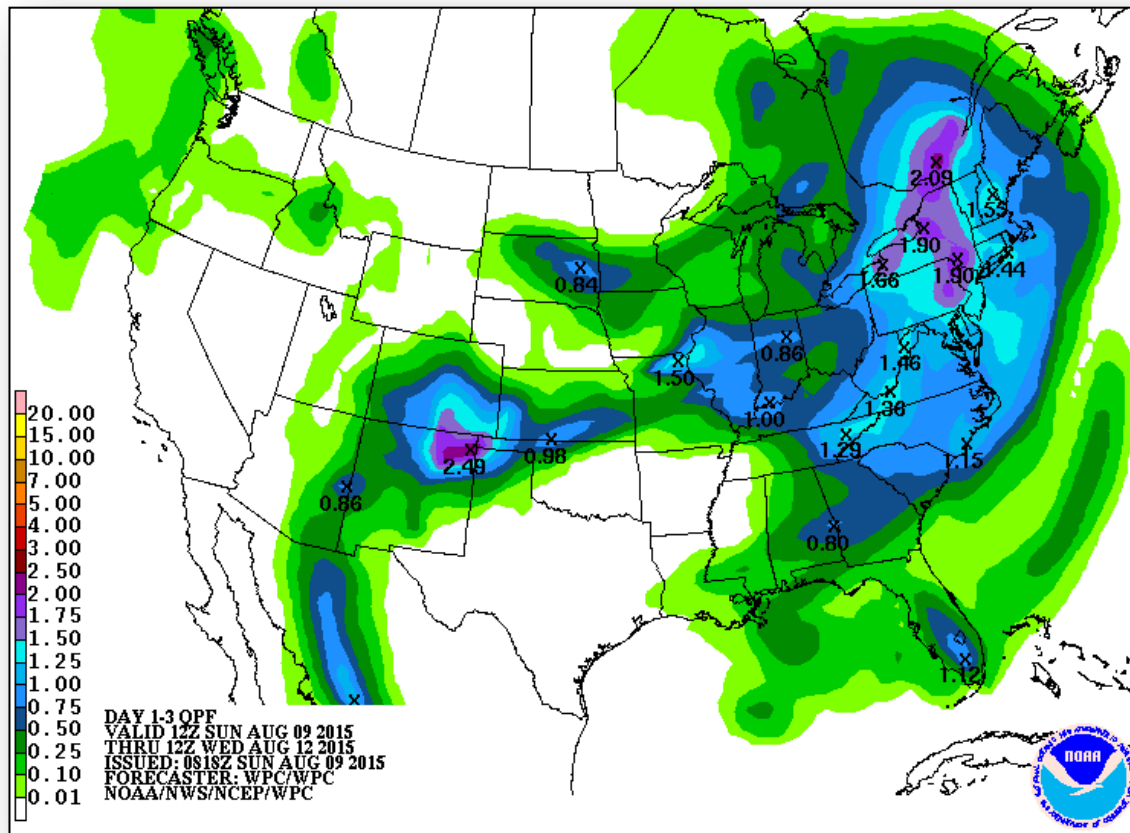
Active Watches/Warnings



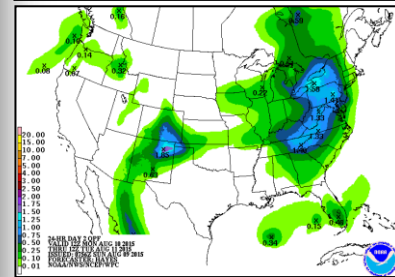
FEMA



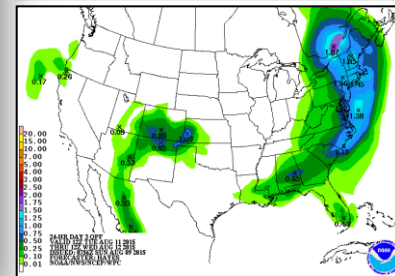
Precipitation Forecast, 1 – 3 Day



Day 1

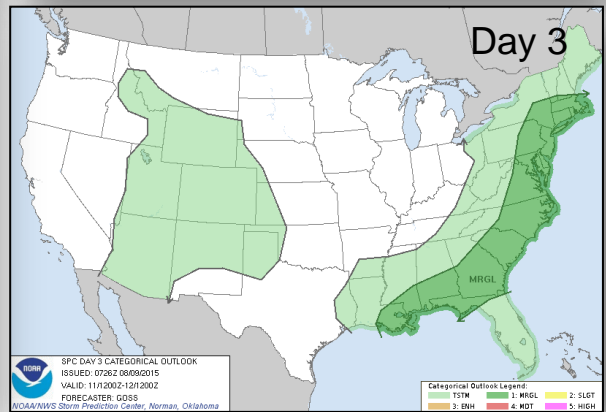
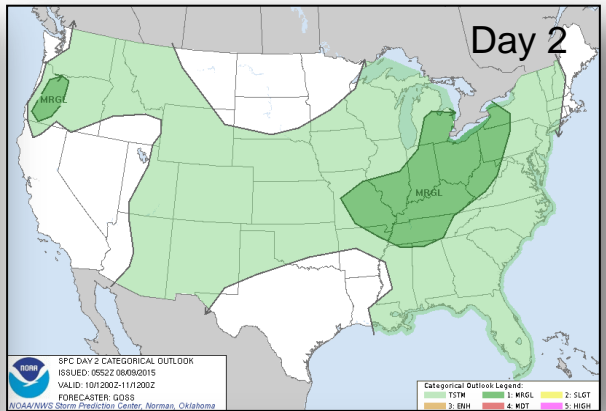
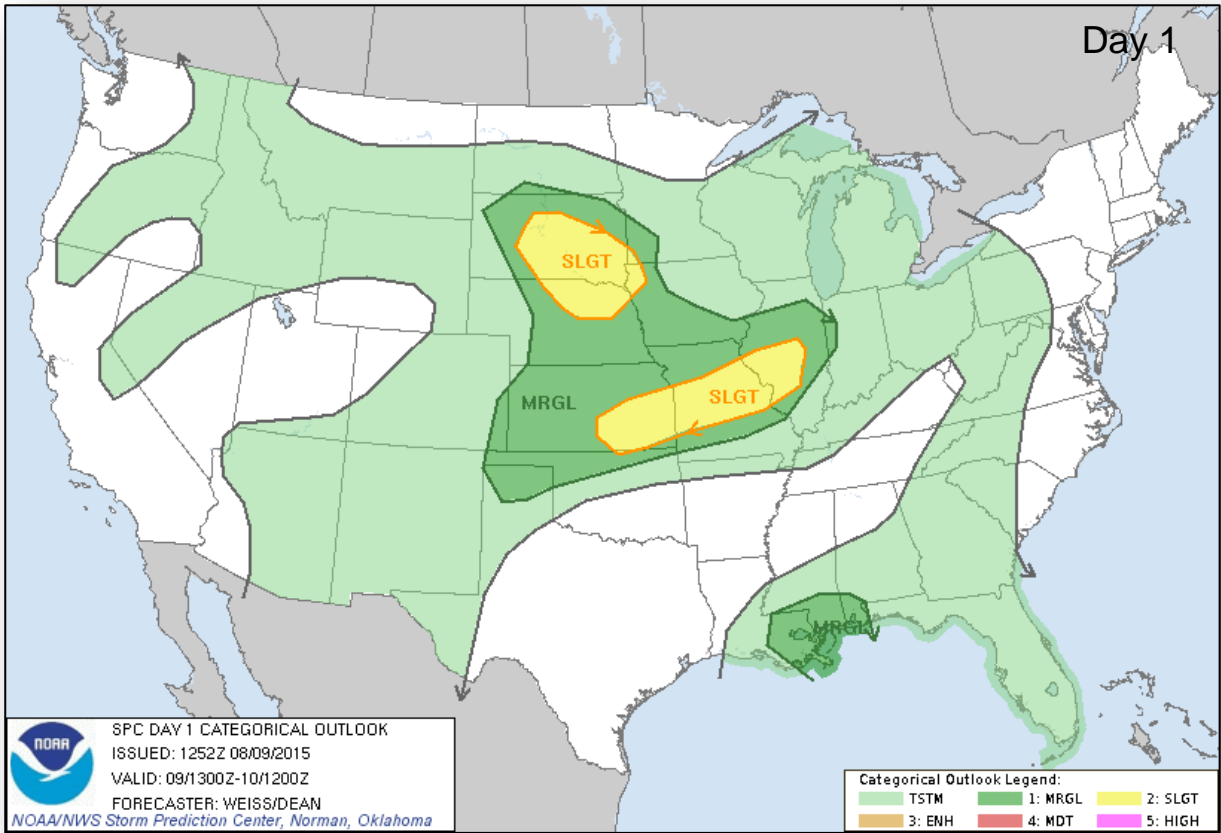


Day 2

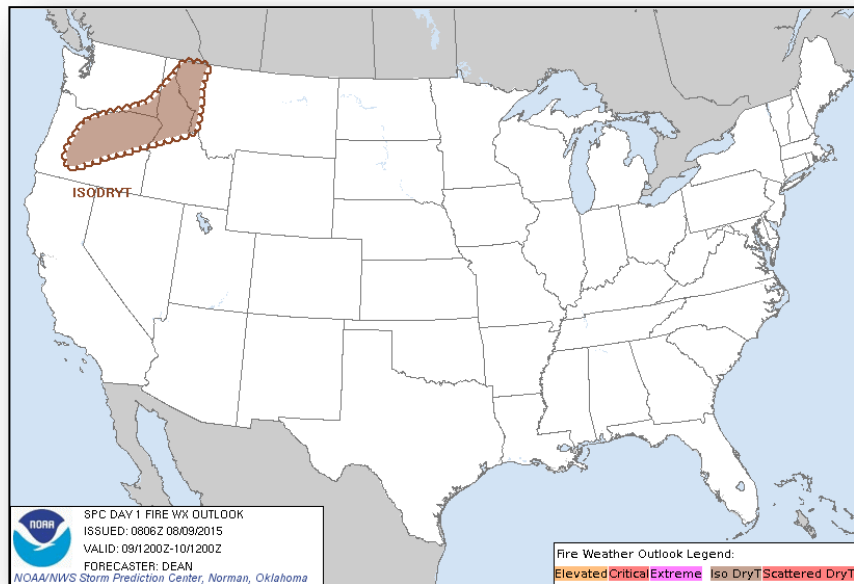


Day 3

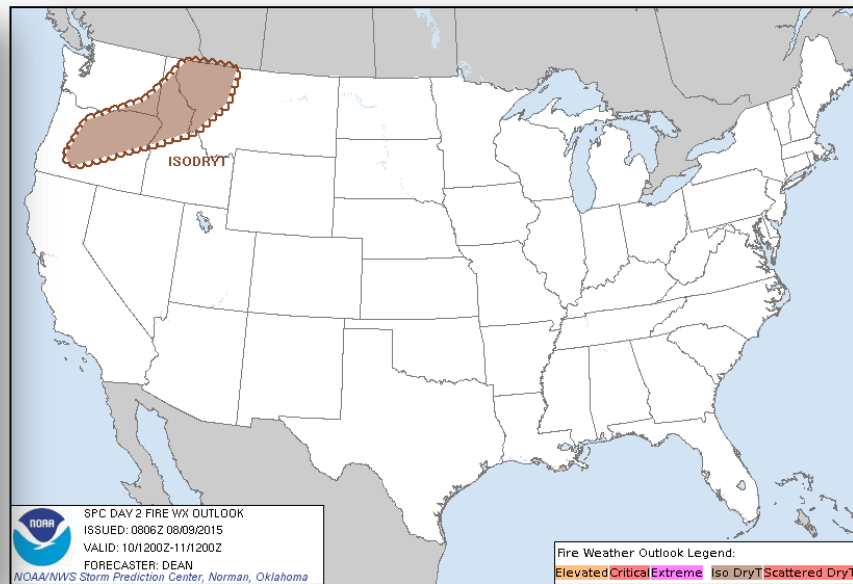
Severe Weather Outlook, Days 1 – 3



Fire Weather Outlook, Days 1 – 2

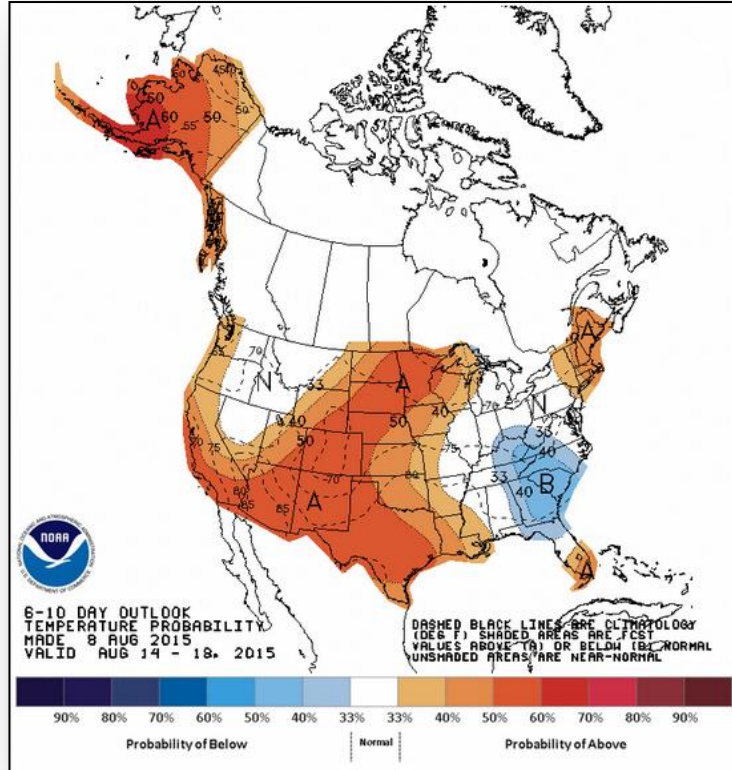


Today

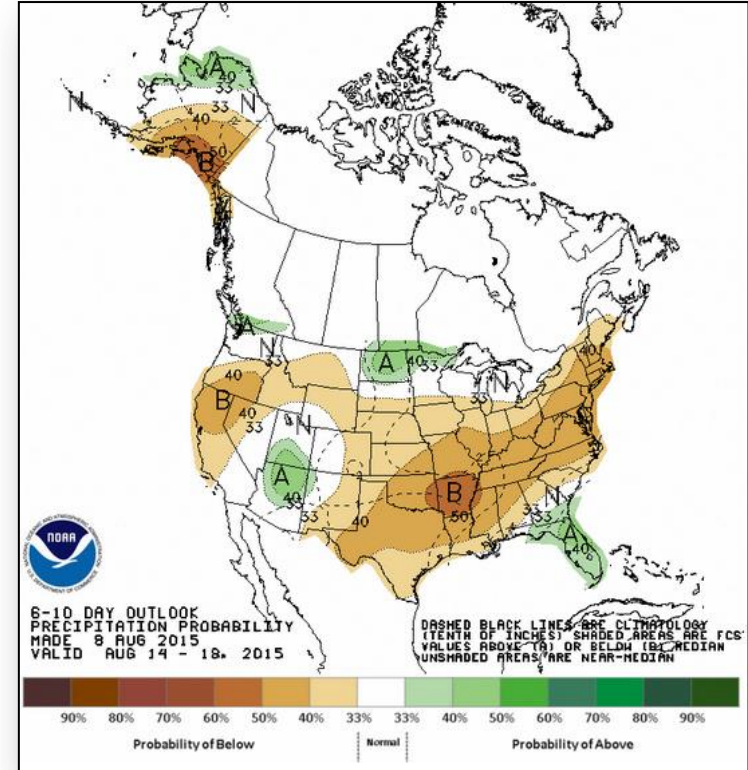


Tomorrow

6-10 Day Outlooks



Temperature Probability



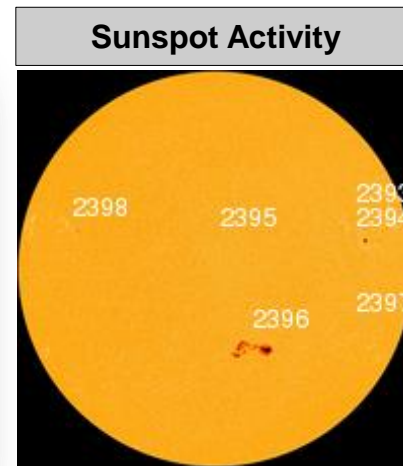
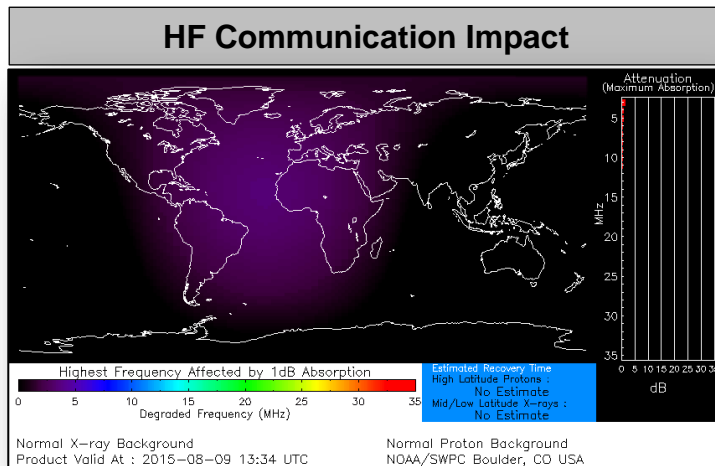
Precipitation Probability

Space Weather



FEMA

	Past 24 Hours	Current	Next 24 Hours
Space Weather Activity:	None	None	Minor
• Geomagnetic Storms	None	None	G1
• Solar Radiation Storms	None	None	None
• Radio Blackouts	None	None	None



FEMA Readiness – Deployable Teams /Assets



Deployable Teams/Assets									
Resource	Status	Total	FMC Available		Partially Available	Not Available	Detailed, Deployed, Activated	Comments	Rating Criterion
FCO		35	12	34%	0	1	22		OFDC Readiness: FCO Green Yellow Red Type 1 3+ 2 1 Type 2 4+ 3 2 Type 3 4 3 2 FDRC 3 2 1
FDRC		9	6	67%	0	0	5		
US&R		28	27	96%	0	1	0	NM-TF1 (Red) – Personnel shortages	<ul style="list-style-type: none"> • Green = Available/FMC • Yellow = Available/PMC • Red = Out-of-Service • Blue = Assigned/Deployed
National IMAT		3	3	100%	0	0	0		<ul style="list-style-type: none"> • Green: 3 avail • Yellow: 1-2 avail • Red: 0 avail (<i>Individual N-IMAT red if 50% of Section Chiefs and/or Team Leader is unavailable for deployment.</i>)
Regional IMAT		13	4	31%	0	1	8	Fully Mission Capable (Green): RI to NH/MA Aug 6 - TBD (training) RII returned to FMC Deployed (Blue): RV to RVI supporting severe weather/flooding RVI (Team 1 & 2) to TX & personnel to OK RVII supporting FEMA-4238-DR-MO RVIII (Team 1) supporting FEMA-4227-DR-WY & FEMA-4229-DR-CO RIX (Team 1 & 2) Deployed to Guam & CNMI Not Mission Capable (Red): Personnel shortages/staff adjustments RIV (Team 3)	<ul style="list-style-type: none"> • Green: 7 or more avail • Yellow: 4 - 6 teams available • Red: > 8 teams deployed/unavailable R-IMAT also red if TL Ops/Log Chief is unavailable & has no qualified replacement
MCOV		60	38	63%	0	9	13	13 units in TX	<ul style="list-style-type: none"> • Green = 80 – 100% avail • Yellow = 60 – 79% avail • Red = 59% or below avail • Readiness remains 95%

FEMA Readiness – National/Regional Teams



National/Regional Teams									
Resource	Status	Total	FMC Available		Partially Available	Not Available	Status	Comments	Rating Criterion
NWC		5	5	100%	0	0	Activated	Enhanced Watch (24/7)	• Green = FMC • Yellow = PMC • Red = NMC
NRCC		2	344	89%	0	44	Not Activated		
HLT		1	N/A	N/A	0	0	Activated		
DEST							Not Activated		
RRCCs		10	10	100%	0	0	Activated	Region IX RRCC Level II (24/7) W/ select ESFs	
RWCs/MOCs		10	10	100%	0	0	Not Activated		



FEMA

FEMA's mission is to support our citizens and first responders to ensure that as a nation we work together to build, sustain, and improve our capability to prepare for, protect against, respond to, recover from, and mitigate all hazards.