

The Disaster Center is dedicated to the idea that disaster mitigation is cost effective and individuals pursuing their own interest are the greatest potential force for disaster reduction.

Please consider making a small donation to the Disaster Center



When disaster mitigation is cost effective, we are on the road to bringing disasters to an end.



FEMA

Daily Operations Briefing

Monday, August 10, 2015

8:30 a.m. EDT

Significant Activity: August 9 -10



Significant Events:

- Typhoon Soudelor Response

Tropical Activity:

- Atlantic: No tropical cyclone activity expected next 48 hours
- Eastern Pacific: Disturbance 1 – Low (10%)
- Central Pacific: Hurricane Hilda
- Western Pacific: No activity affecting U.S. territories

Significant Weather:

- Flash flooding possible: Central/Southern Rockies to Southern Plains; Great Lakes to Northeast
- Red Flag Warnings: northern CA, OR, WA & ID
- Critical Fire Weather Areas: none; isolated/scattered dry thunderstorms: WA, OR, ID & MT
- Space Weather: Past 24 hours – none occurred; next 24 hours – none predicted

Declaration Activity:

- Major Disaster Declarations approved – West Virginia, Oglala Sioux Tribe & Missouri
- FMAGs approved – Willow Fire, CA & Krauss Lane Fire, OR

Typhoon Soudelor (13W) – Response

Situation:

- Restoration of power, potable water, & wastewater treatment continues
 - 26 generators arrived in Saipan from HI on Monday Chst
 - Utility estimates power restoration to Power Plant #1 by August 31
 - 12 water wells operational; CUC opened 5 water filling stations
 - 2 bottled water companies operational, plan to deliver free drinking water to villages each day
- 9 shelters open on Saipan with 535 (-2) occupants
- USS Ashland en route to Saipan with GPA equipment; FEMA Air bridge between Saipan and Guam established via C-130's for Aug 9-12, will continue flow of generator sets & commodities

Territory Response:

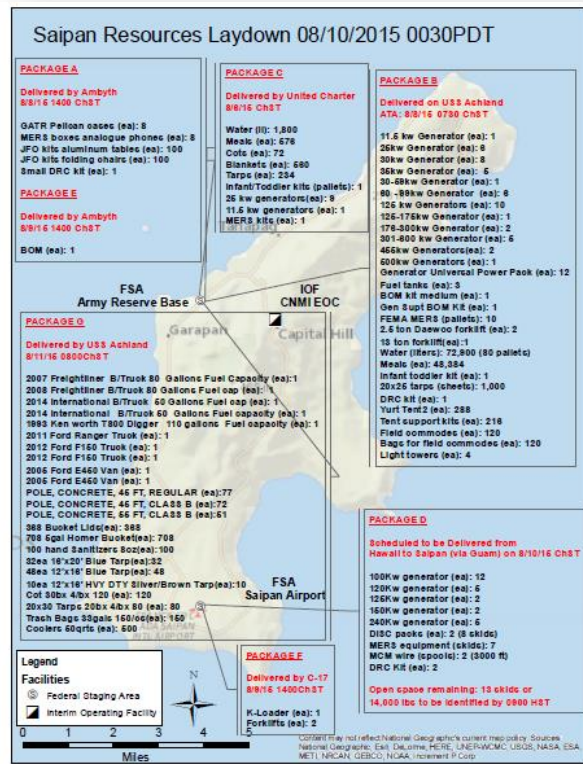
- CNMI EOC is Fully Activated (5:00 pm-5:00 am EDT)
- UCG (comprised of Region IX IMAT/staff, USACE & CNMI Office of Homeland Security) has assumed operational control of CNMI & Guam based resources, coordinating generator requirements & placement

FEMA Region IX Response:

- RRCC: Level III (3:00 pm - 11:00 pm EDT) w/ESFs 3, 12, & DCO support; retransitioning responsibility to Unified Coordination Staff in CNMI
- IMATs 1 & 2 w/ESFs 3, 8, & 12; LNOs (2), MERS (2), DEC, COML & Mass Care Specialist deployed

FEMA HQ Response:

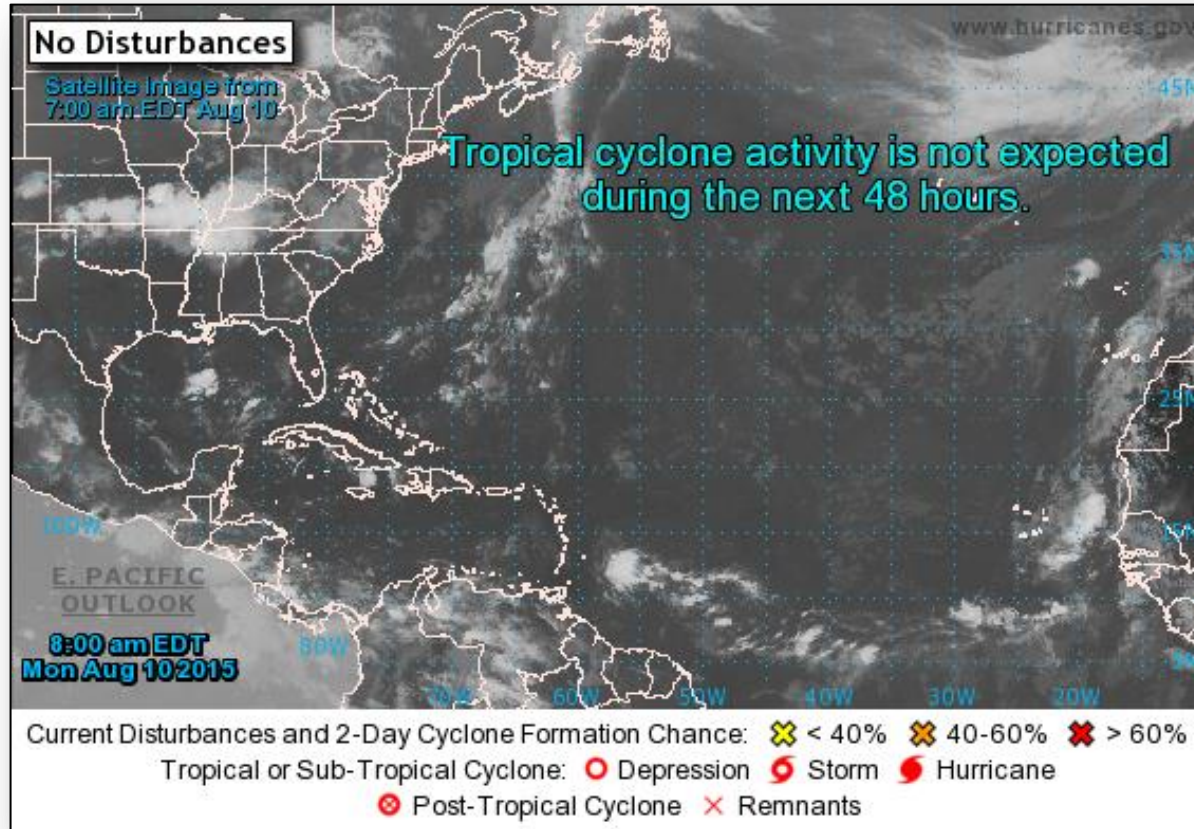
- FEMA-4235-DR-CNMI approved Aug 5, 2015
 - IOF established at CNMI EOC (5:00 pm-5:00 am EDT); MOU for JFO complete, location TBD
 - Contract for DRC buildout complete
- NRCC not activated; NWC at Enhanced Watch (24/7)
- MERS installing FEMA UHF C2 network on Saipan to provide local & FEMA radio communications
- FEMA Logistics: DC Guam primary for resource support; DC HI assisting
 - FSA at Saipan Army Reserve Base; ISB/FSA Alpha Team deployed to DC Guam (9) & DC HI (6)



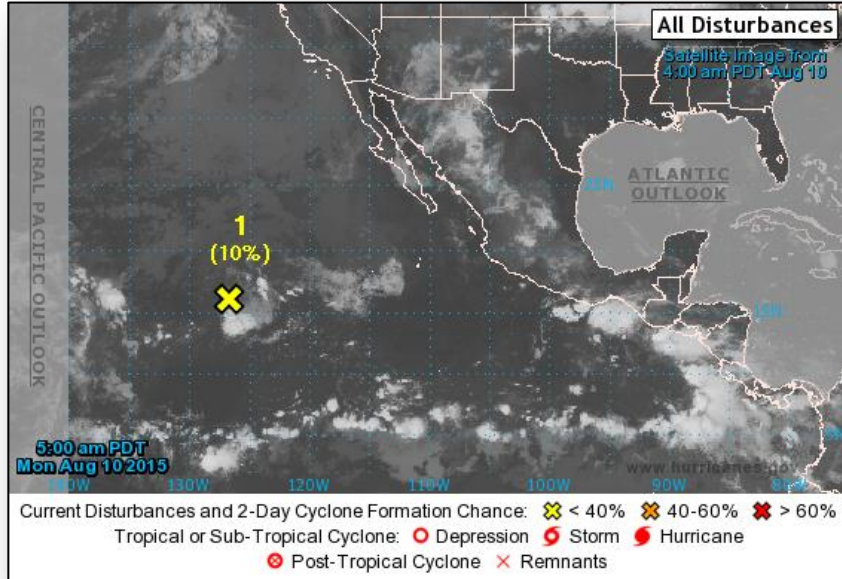
2-Day Tropical Outlook – Atlantic



FEMA



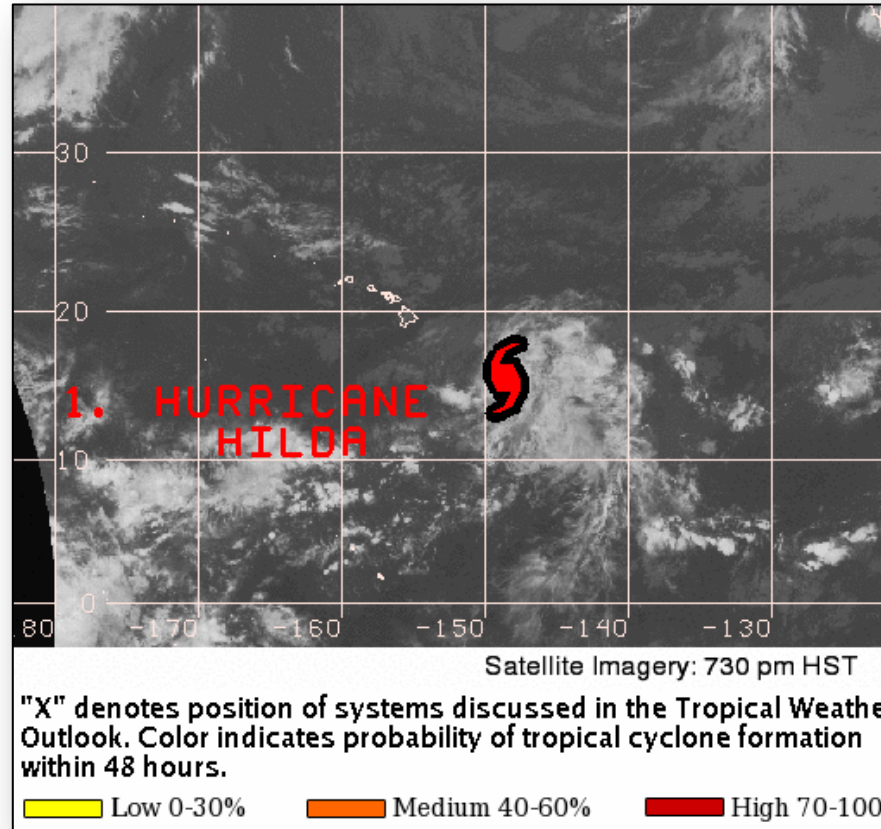
2-Day Tropical Outlook – Eastern Pacific



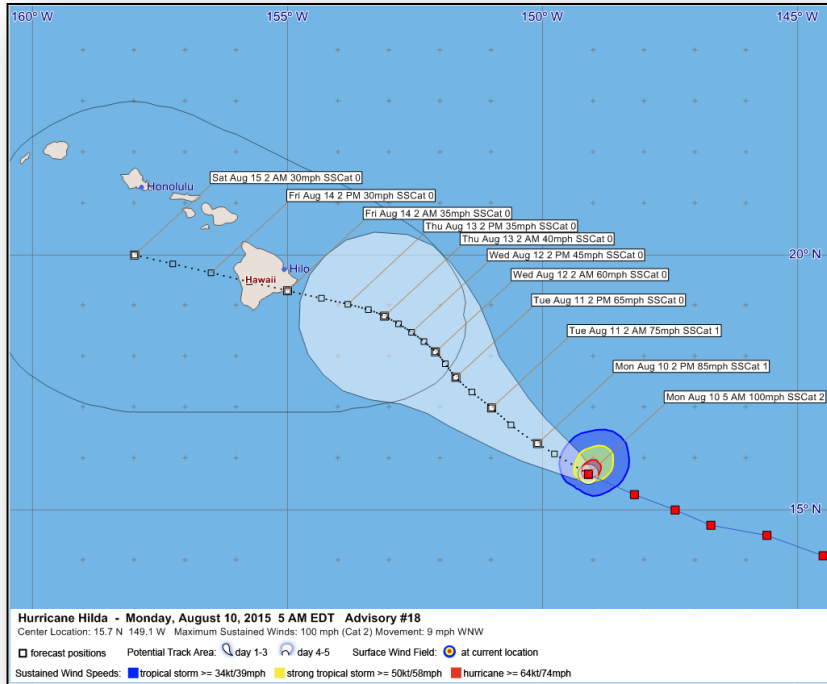
Disturbance 1: (as of 2:00 a.m. EDT)

- Located 1,200 miles WSW of southern tip of Baja California peninsula
- Moving W at 10 mph
- Development unlikely due to an increasingly unfavorable environment
- Formation chance through 48 hours: Low (10%)
- Formation chance through 5 days: Low (10%)

Tropical Outlook – Central Pacific

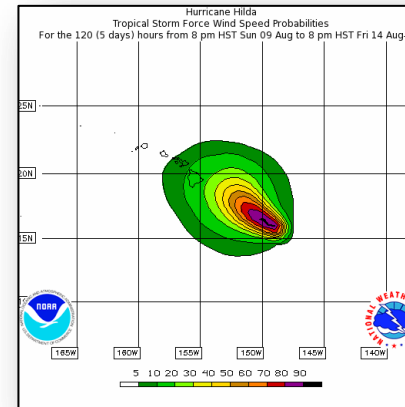


Central Pacific – Hurricane Hilda



Hurricane Hilda: (Advisory #18 as of 5:00 a.m. EDT)

- Located 480 miles SE of Hilo, HI
- Moving WNW at 9 mph
- Turn NW with decrease in forward speed expected next 48 hours
- Forecast to be moving very slowly on Tues
- Maximum sustained winds 100 mph (Cat 2)
- Steady weakening expected next 48 hours; forecast to become a tropical storm on Tues
- Hurricane force winds extend 25 miles
- Tropical storm force winds extend 70 miles
- No coastal watches or warnings in effect

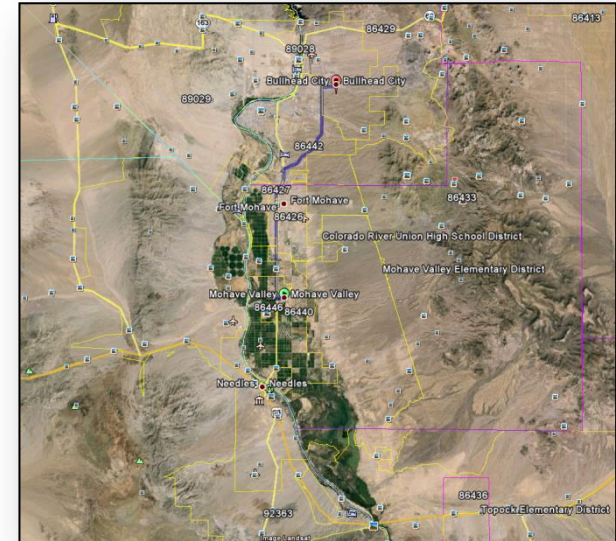


Willow Fire – AZ



Fire Name (County)	Location	Acres burned	% Contained	Est. Full Containment	FMAG	Structures Lost / Threatened	Fatalities / Injuries
Willow Fire (Mohave County)	Mohave Valley	6,000 (+4,200)	0%	Unknown	Approved August 9, 2015	0 / 710 (600 homes)	0/0

- The fire began August 8, 2015 near Mohave Valley south of Bull head City (Mohave County)
- Threatening homes in Topack Lake Ranchos and Delta City (pop. 350-400) and Agua View Estates
- Mandatory evacuation in effect for 700 residents
- 1 shelter open with 19 occupants
- AZ EOC at Watch/Steady State; no shortfalls
- FEMA Region IX RRCC at Level II, 24/7 (for Typhoon Soudelor)

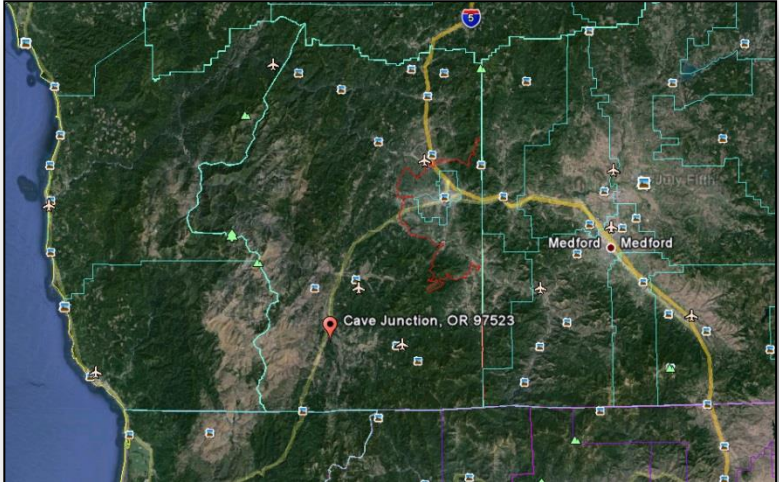


Krauss Lane Fire – OR (Final)



Fire Name (County)	Location	Acres burned	% Contained	Est. Full Containment	FMAG	Structures Lost / Threatened	Fatalities / Injuries
Krauss Lane Fire (Josephine County)	Cave Junction	100	100%	August 9, 2015	Approved August 9, 2015	0/0	0/0

- The fire began August 8, 2015 about 5 miles south of Cave Junction, OR (pop 1,871)
- Mandatory evacuations lifted
- Numerous local roads, bridges, and utilities are closed
- OR EOC is at Partial Activation w/ most ESFs staffed (daytime only) for wildfire support statewide; no shortfalls
- FEMA Region X is not activated



FMAG Requests and Declarations



Action (since last report)		Total	FMAG No. and State		
Requests DENIED		0			
Requests APPROVED		2	Willow Fire, CA Krauss Lane Fire, OR		
Approved FMAG Data					
Year	Current YTD	MTD	Monthly Average	Cumulative Acres Burned YTD	Cumulative Denied FMAGs YTD
2015	15	4	11	79,540	2
Year	Total Previous FY	++ Yearly Average		Total Acres Burned Previous Year	Total Denied FMAGs Previous Year
2014	31	37		152,648	2
* Reflects the 3-year average for current month/ ** Reflects 3-year total average					

Wildfire Summary



Fire Name (County)	F MAG #	Acres burned	% Contained Est. Containment date	Evacuations (Residents)	Structures Threatened	Structures Damaged/ Destroyed	Fatalities / Injuries
Arizona (1)							
Willow Fire (Mohave County)	FEMA-5095-FM-AZ Approved August 8	6,000 (+4,200)	0%	Mandatory (700)	710 (+560) (600 homes)	0/0	0/0
California (1)							
Rocky Fire (Final) (Lake, Yolo, Colusa & Napa counties)	FEMA-5093-FM-CA Approved August 2	69,636	85% (+15)	Lifted	None	8 (2 homes) / 96 (43 homes)	0/0
Oregon (2)							
Stouts Creek Fire (Douglas County)	FEMA-5092-FM-OR Approved July 31	22,501 (+643)	40 (+5%)	Advisory	163 (158 homes / 5 commercial)	0/0	0/7
Krauss Lane Fire (Final) (Josephine County)	FEMA-5096-FM-OR Approved August 9	100	100% (+100)	Lifted	None	0/2	0/0
Washington (1)							
Highway 8 Fire (Final) (Klickitat County)	FEMA-5094-FM-WA Approved August 5	33,100 (+200)	95% (+20)	Lifted	40 homes	0/0	0/1 (+1)

Disaster Requests & Declarations



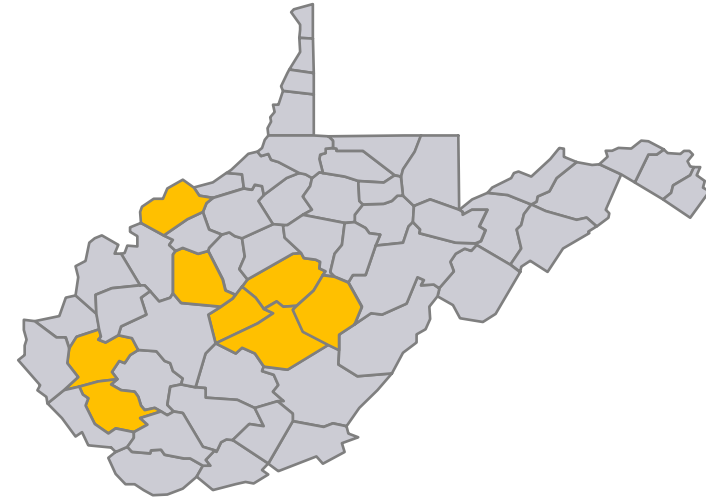
Declaration Requests in Process		Requests APPROVED (since last report)	Requests DENIED (since last report)
2	Date Requested	3	0
KY – DR Severe Storms, Tornadoes, Straight-line Winds, Flooding, and Mudslides	July 24, 2015		
AK – DR Wildfires	July 24, 2015		
MO – DR Severe Storms, Tornadoes, Straight-line Winds, and Flooding	July 21, 2015	August 7, 2015	
WV – DR Severe Storms, Straight-line Winds, Flooding, Mudslides, and Landslides	July 27, 2015	August 7, 2015	
Oglala Sioux Tribe (SD) – DR Severe Storms and Flooding	July 29, 2015	August 7, 2015	

Major Disaster Declaration Approved – WV



FEMA-4236-DR-WV

- Major Disaster Declaration approved August 7, 2015 for State of West Virginia
- For severe storms, straight-line Winds, flooding, landslides & mudslides during the period July 10-14, 2015
- Provides:
 - Public Assistance for 8 counties
 - Hazard Mitigation statewide
- FCO is Regis Leo Phelan



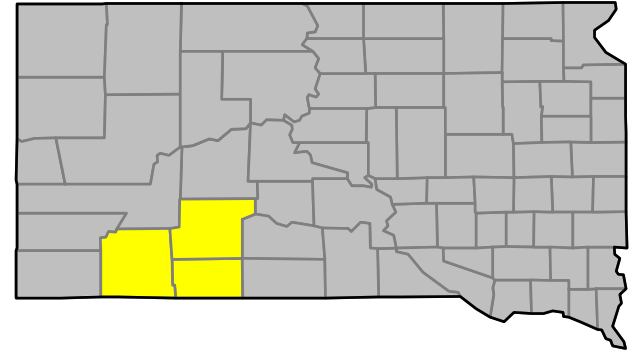
 Declared PA counties

Major Disaster Declaration Approved – Oglala Sioux



FEMA-4237-DR-Oglala Sioux Tribe

- Major Disaster Declaration approved August 7, 2015 for Oglala Sioux Tribe (Pine Ridge Reservation)
- For severe storms, straight-line winds & flooding during the period May 8-29, 2015
- Provides:
 - Individual Assistance for members of the Oglala Sioux Tribe of the Pine Ridge Indian Reservation
 - Hazard Mitigation for the Oglala Sioux Tribe of the Pine Ridge Indian Reservation
- FCO is Gary R. Stanley



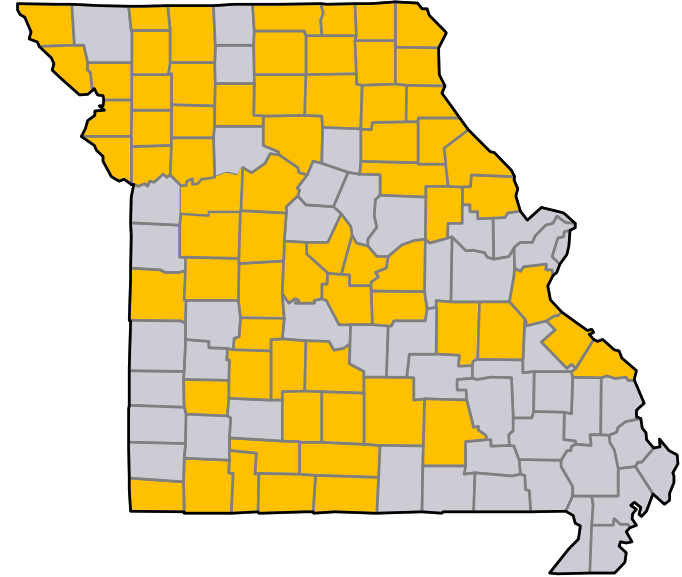
- Declared IA Oglala Sioux Tribe (Pine Ridge Reservation spread across three SD counties)

Major Disaster Declaration Approved - MO



FEMA-4238-DR-MO

- Major Disaster Declaration approved August 7, 2015 for State of Missouri
- For severe storms, tornadoes, straight-line winds & flooding during the period May 15 – July 27, 2015
- Provides:
 - Public Assistance for 68 counties
 - Hazard Mitigation statewide
- FCO is Michael L. Parker

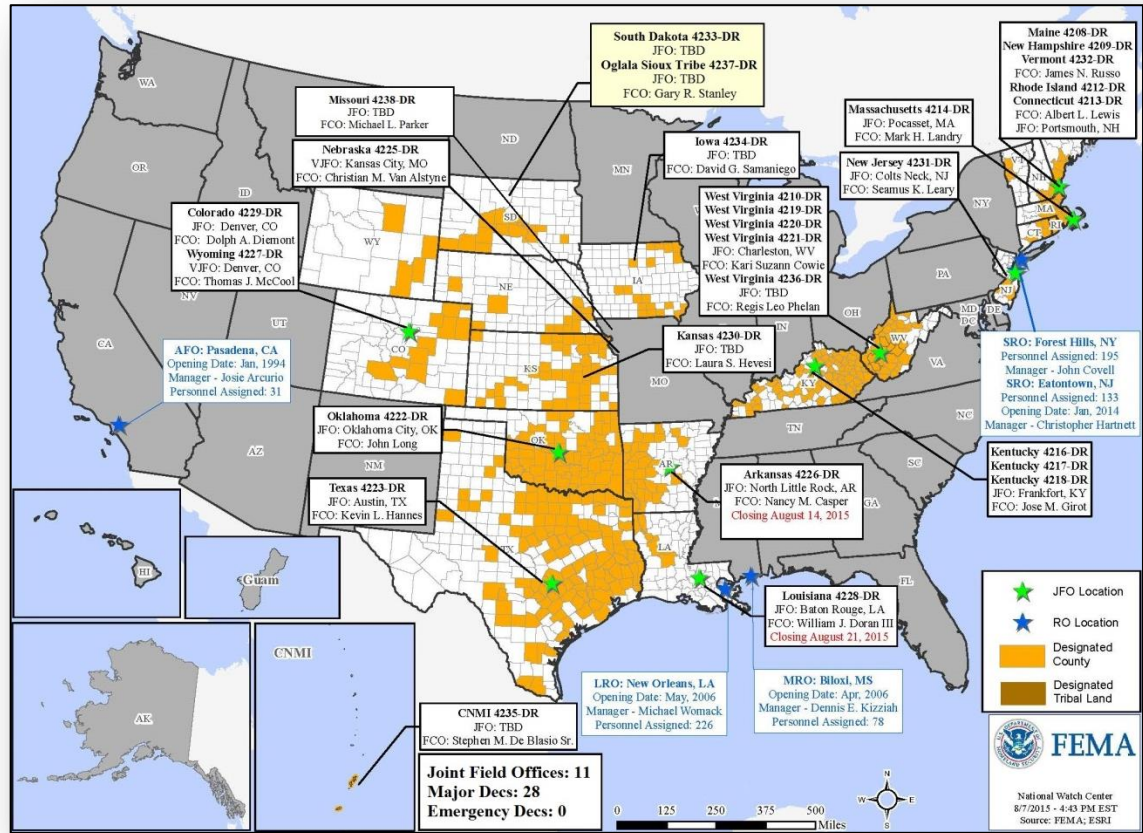


■ Declared PA counties

Open Field Offices as of August 10



FEMA

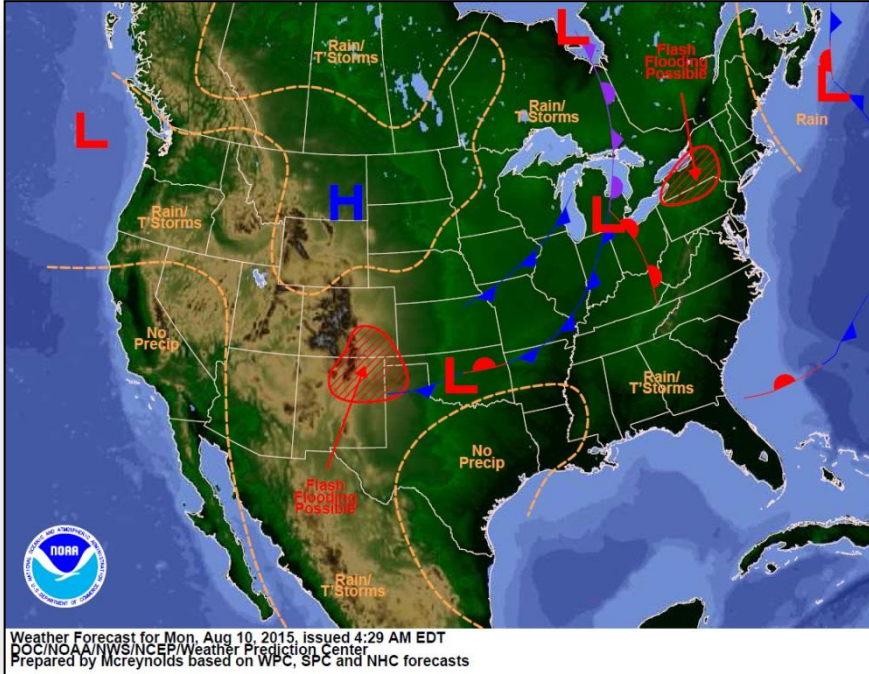


Joint Preliminary Damage Assessments

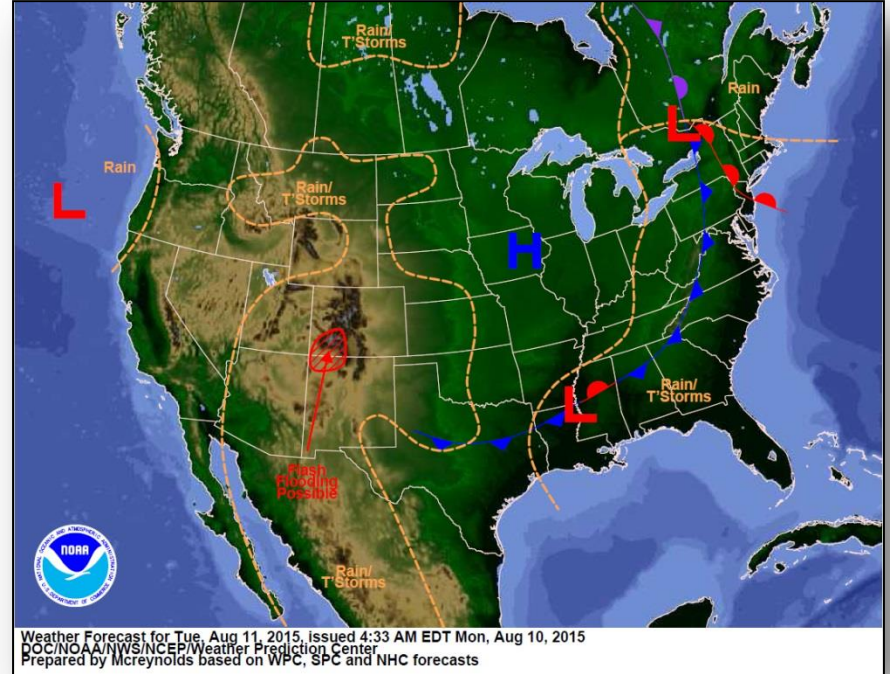


Region	State / Location	Event	I/PA	Number of Counties		Start – End
				Requested	Complete	
IV	KY	Severe Storms & Flooding July 13-15, 2015	IA	4	4	7/18 – 7/23
			PA	34	34 (+4)	7/27 – 8/6
V	IL	Severe Weather June-July 2015	IA	7	1 (+1)	8/6 - TBD
			PA	23	0	8/10 - TBD
IX	CNMI	Typhoon Soudelor August 1-3	IA	3	3	8/5 – 8/6
			PA	3	3	8/5 – 8/6

National Weather Forecast



Today

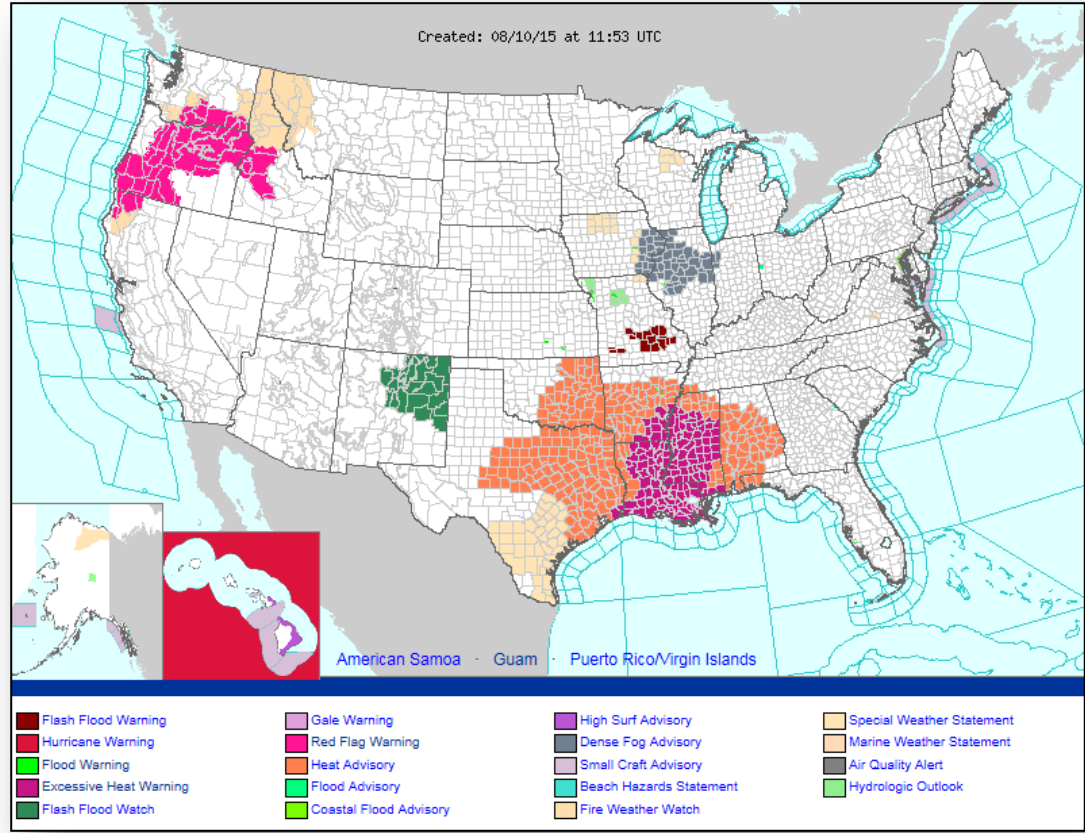


Tomorrow

Active Watches/Warnings



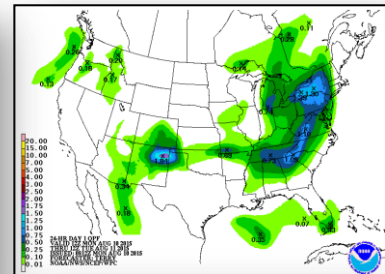
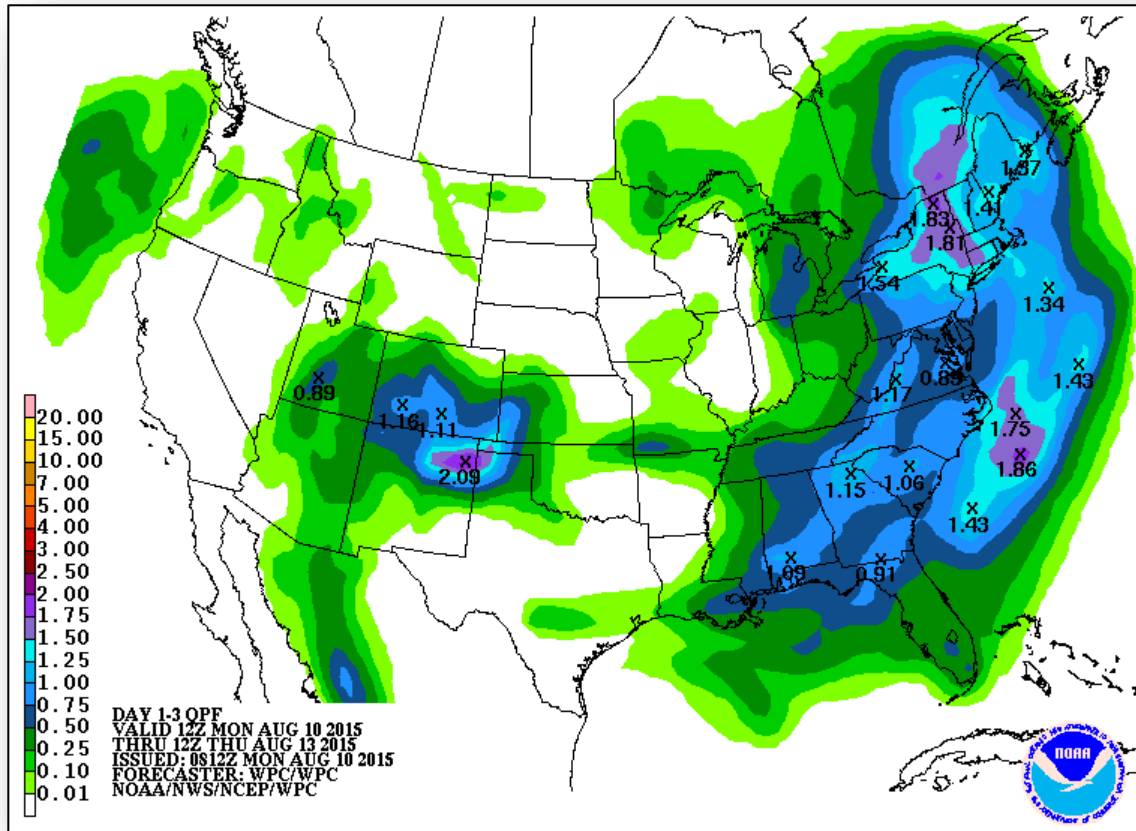
FEMA



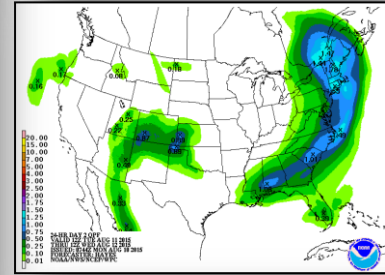
Precipitation Forecast, 1 – 3 Day



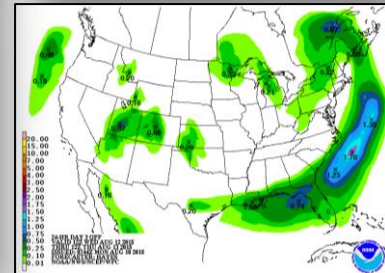
FEMA



Day 1

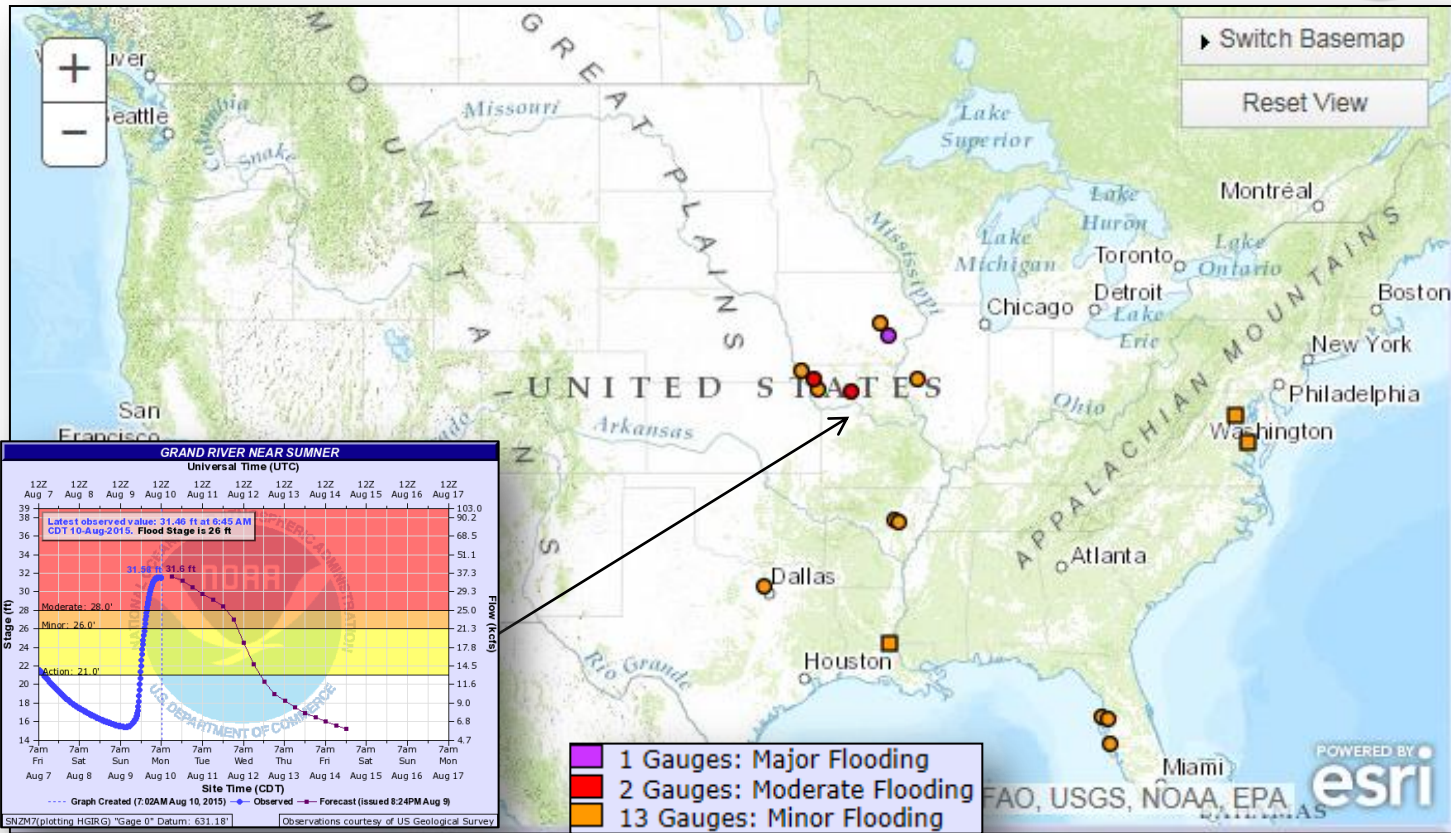


Day 2

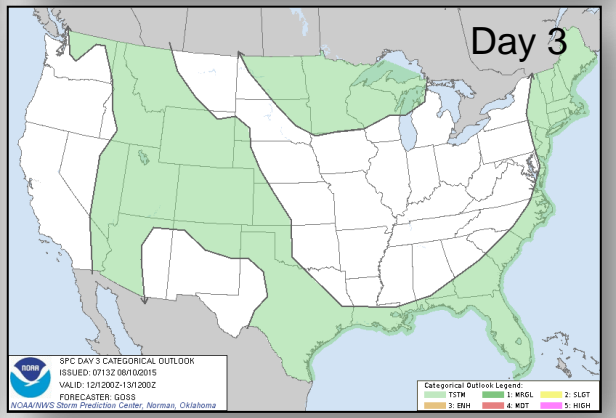
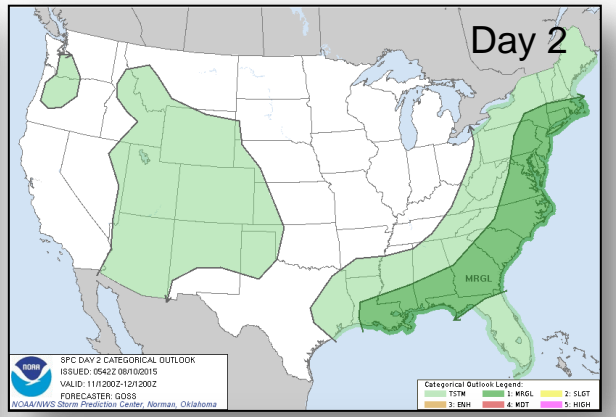
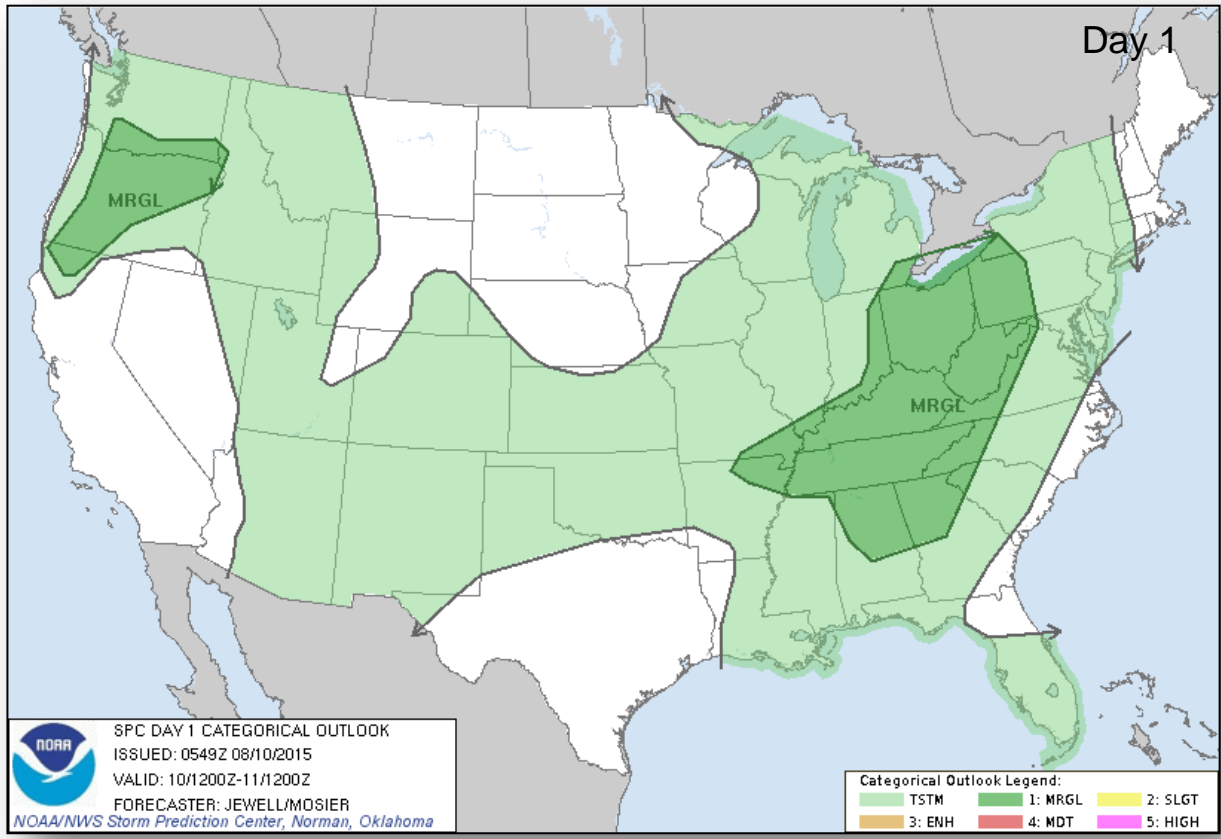


Day 3

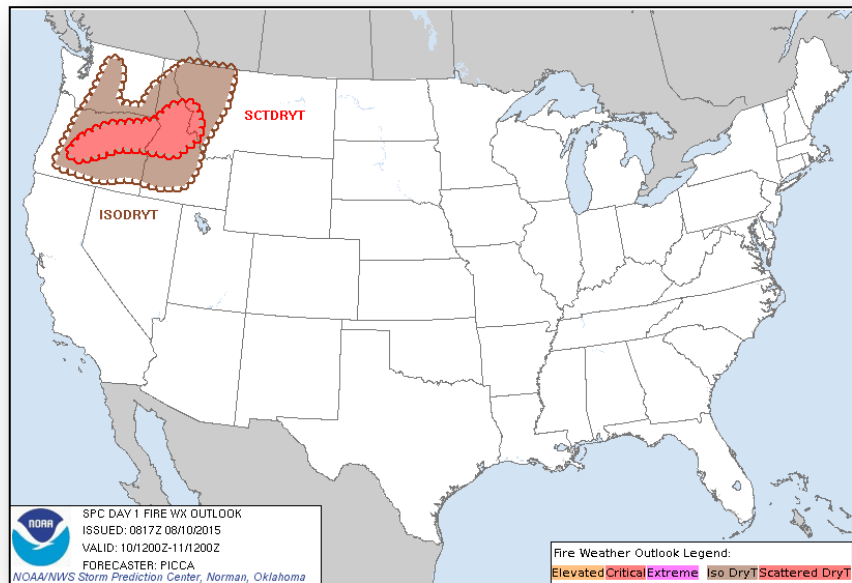
River Forecast



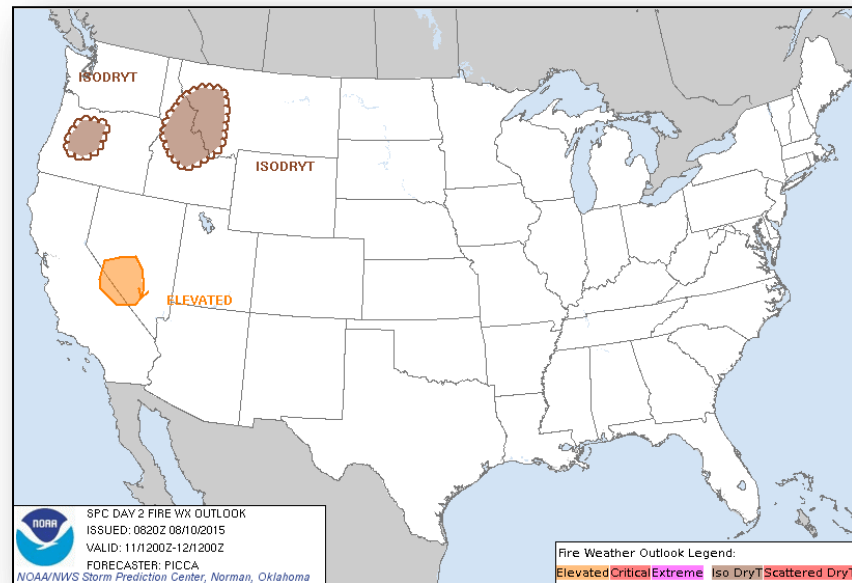
Severe Weather Outlook, Days 1 – 3



Fire Weather Outlook, Days 1 – 2

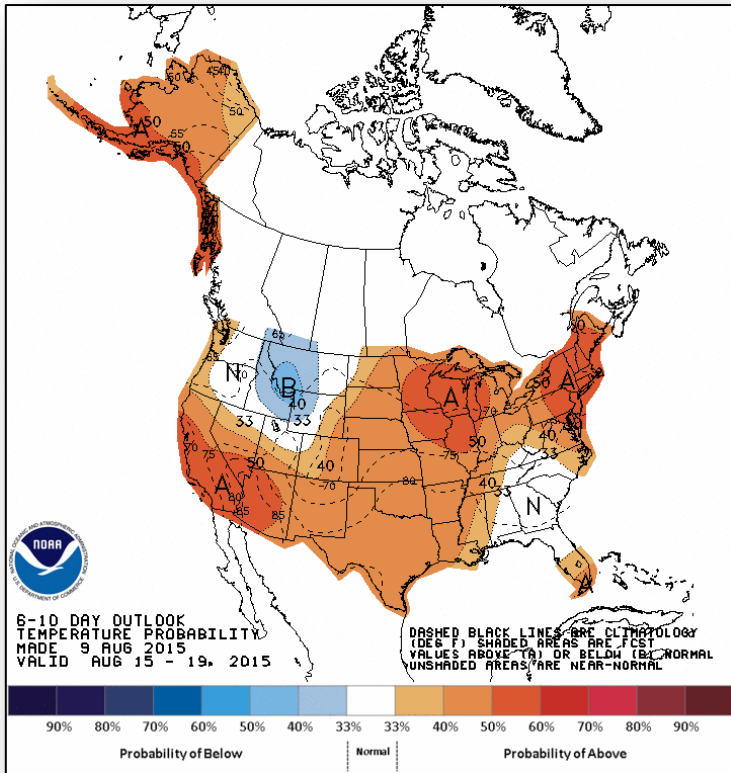


Today

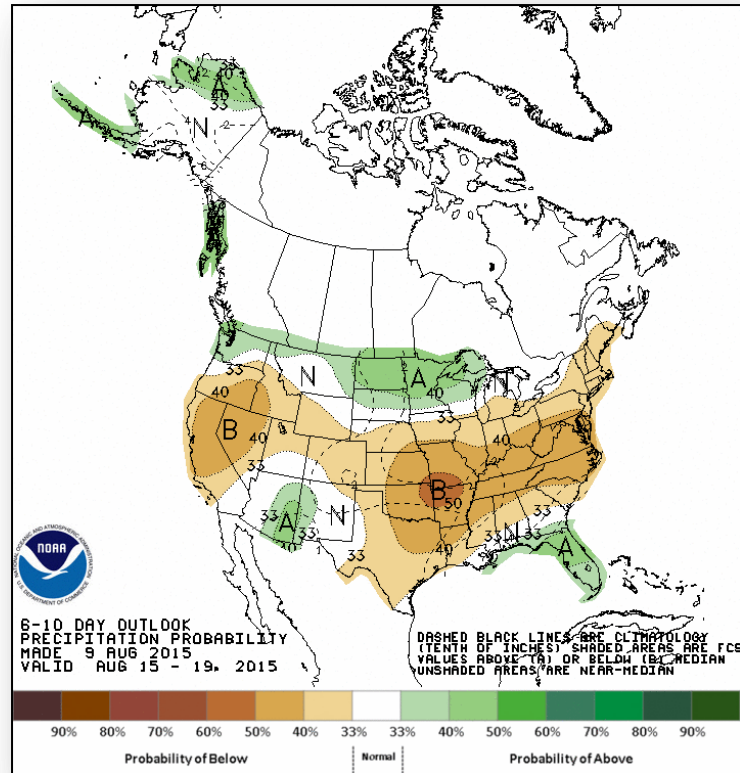


Tomorrow

6-10 Day Outlooks



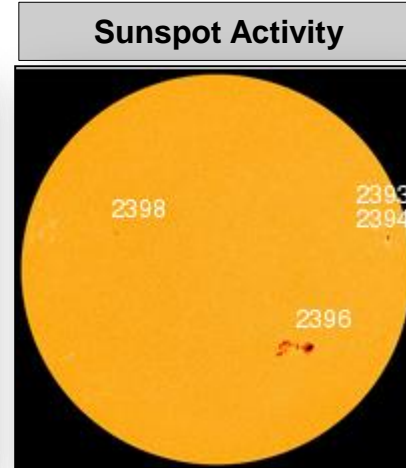
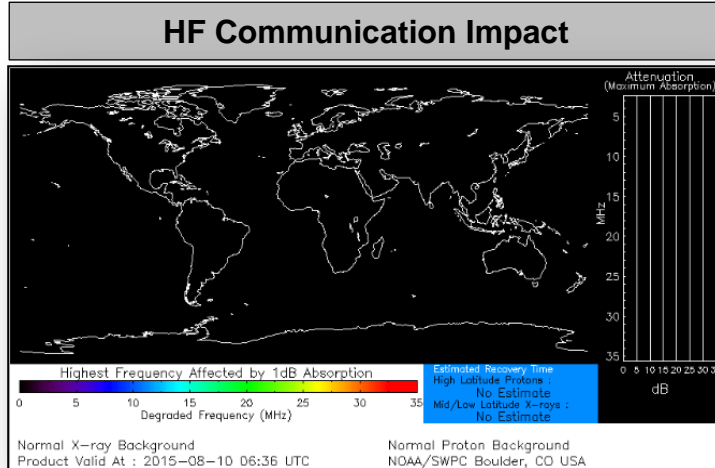
Temperature Probability



Precipitation Probability

Space Weather

	Past 24 Hours	Current	Next 24 Hours
Space Weather Activity:	None	None	None
• Geomagnetic Storms	None	None	None
• Solar Radiation Storms	None	None	None
• Radio Blackouts	None	None	None



FEMA Readiness – Deployable Teams /Assets



Deployable Teams/Assets									
Resource	Status	Total	FMC Available		Partially Available	Not Available	Detailed, Deployed, Activated	Comments	Rating Criterion
FCO	Green	35	12	34%	0	1	22		OFDC Readiness: FCO Green Yellow Red Type 1 3+ 2 1 Type 2 4+ 3 2 Type 3 4 3 2 FDRC 3 2 1
FDRC	Green	9	6	67%	0	0	5		
US&R	Green	28	27	96%	0	1	0	NM-TF1 (Red) – Personnel shortages	<ul style="list-style-type: none"> • Green = Available/FMC • Yellow = Available/PMC • Red = Out-of-Service • Blue = Assigned/Deployed
National IMAT	Green	3	3	100%	0	0	0		<ul style="list-style-type: none"> • Green: 3 avail • Yellow: 1-2 avail • Red: 0 avail (<i>Individual N-IMAT red if 50% of Section Chiefs and/or Team Leader is unavailable for deployment.</i>)
Regional IMAT	Yellow	13	4	31%	0	1	8	<p>Fully Mission Capable (Green): RI to NH/MA Aug 6 - TBD (training) RII returned to FMC</p> <p>Deployed (Blue): RV to RVI supporting severe weather/flooding RVI (Team 1 & 2) to TX & personnel to OK RVII supporting FEMA-4238-DR-MO RVIII (Team 1) supporting FEMA-4227-DR-WY & FEMA-4229-DR-CO RIX (Team 1 & 2) Deployed to Guam & CNMI</p> <p>Not Mission Capable (Red): Personnel shortages/staff adjustments RIV (Team 3)</p>	<ul style="list-style-type: none"> • Green: 7 or more avail • Yellow: 4 - 6 teams available • Red: > 8 teams deployed/unavailable <p><i>R-IMAT also red if TL Ops/Log Chief is unavailable & has no qualified replacement</i></p>
MCOV	Yellow	60	38	63%	0	9	13	13 units in TX	<ul style="list-style-type: none"> • Green = 80 – 100% avail • Yellow = 60 – 79% avail • Red = 59% or below avail • Readiness remains 95%

FEMA Readiness – National/Regional Teams



National/Regional Teams									
Resource	Status	Total	FMC Available		Partially Available	Not Available	Status	Comments	Rating Criterion
NWC		5	5	100%	0	0	Activated	Enhanced Watch (24/7)	<ul style="list-style-type: none"> • Green = FMC • Yellow = PMC • Red = NMC
NRCC		2	344	89%	0	44	Not Activated		
HLT		1	N/A	N/A	0	0	Activated		
DEST							Not Activated		
RRCCs		10	10	100%	0	0	Activated	Region IX RRCC Level III (3:00 pm - 11:00 pm EDT)	
RWCs/MOCs		10	10	100%	0	0	Not Activated		



FEMA

FEMA's mission is to support our citizens and first responders to ensure that as a nation we work together to build, sustain, and improve our capability to prepare for, protect against, respond to, recover from, and mitigate all hazards.