

The Disaster Center is dedicated to the idea that disaster mitigation is cost effective and individuals pursuing their own interest are the greatest potential force for disaster reduction.

Please consider making a small donation to the Disaster Center



When disaster mitigation is cost effective, we are on the road to bringing disasters to an end.



FEMA

Daily Operations Briefing

Wednesday, August 12, 2015

8:30 a.m. EDT

Significant Activity: August 11-12



Significant Events: None

Tropical Activity:

- Atlantic: No tropical cyclone activity expected next 48 hours
- Eastern Pacific: Disturbance 1 – Low (20%); Disturbance 2 – Low (10%)
- Central Pacific: Hurricane Hilda; Disturbance 1 (near 0%)
- Western Pacific: No activity affecting U.S. territories

Significant Weather:

- Heavy rain & flash flooding possible: Southwest and Central Great Basin
- Above average temperatures: Southwest, Southern Plains, and Lower Mississippi Valley
- Red Flag Warnings: Northern California, Washington, and Idaho
- Critical Fire Weather Areas: None
- Space Weather: Past 24 hours – no space weather storms occurred; next 24 hours – none predicted

Declaration Activity: None

2-Day Tropical Outlook – Atlantic



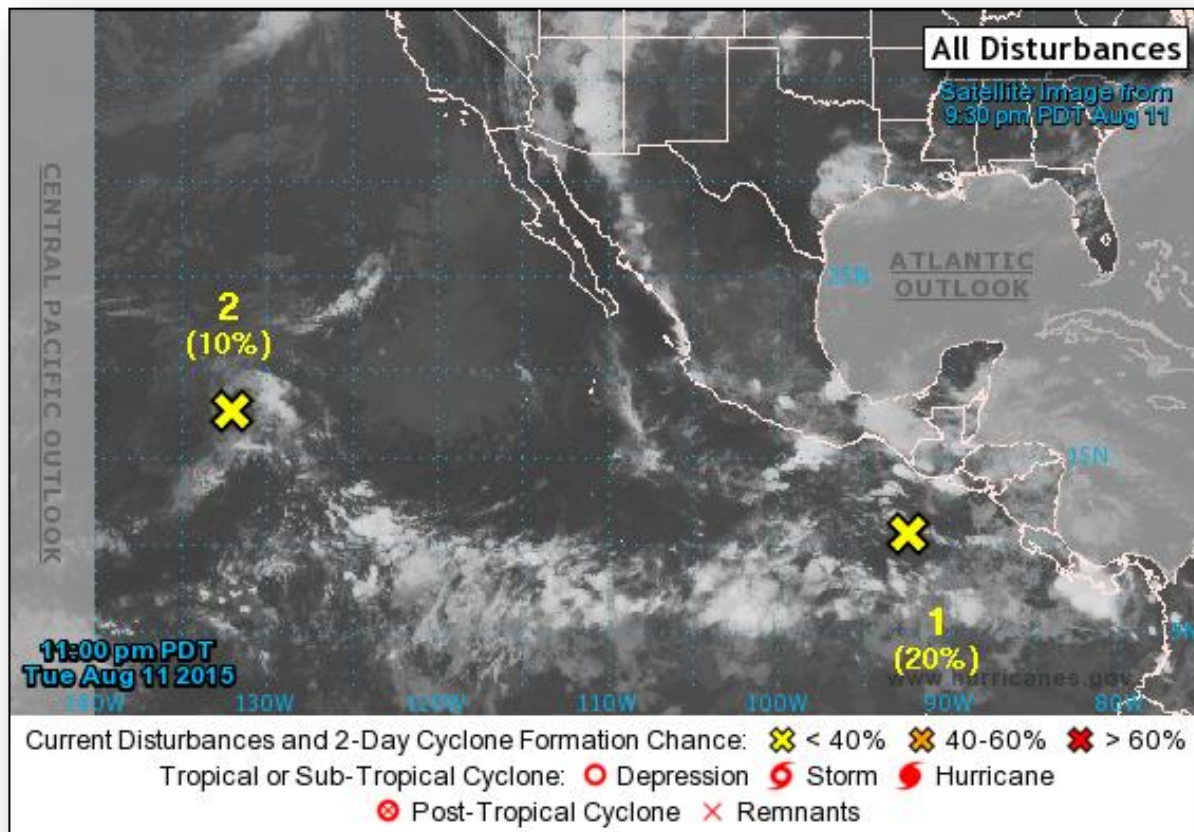
FEMA



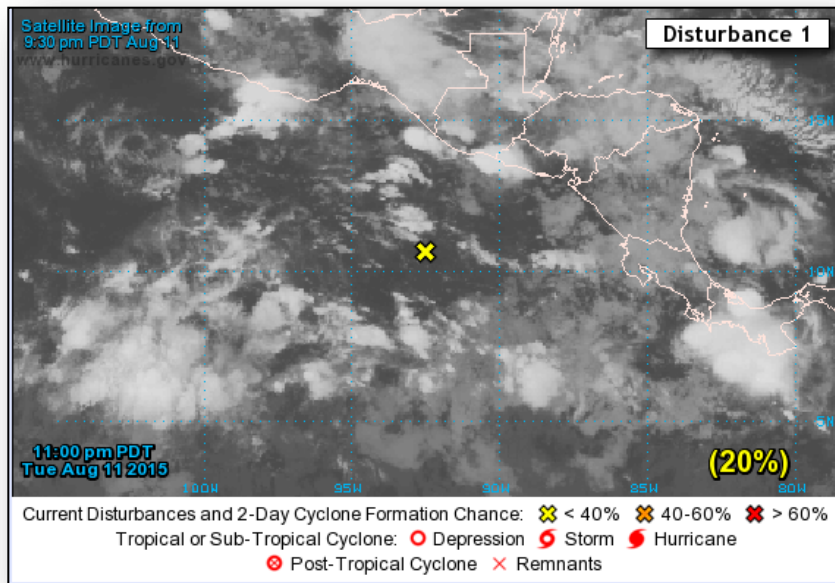
2-Day Tropical Outlook – Eastern Pacific



FEMA



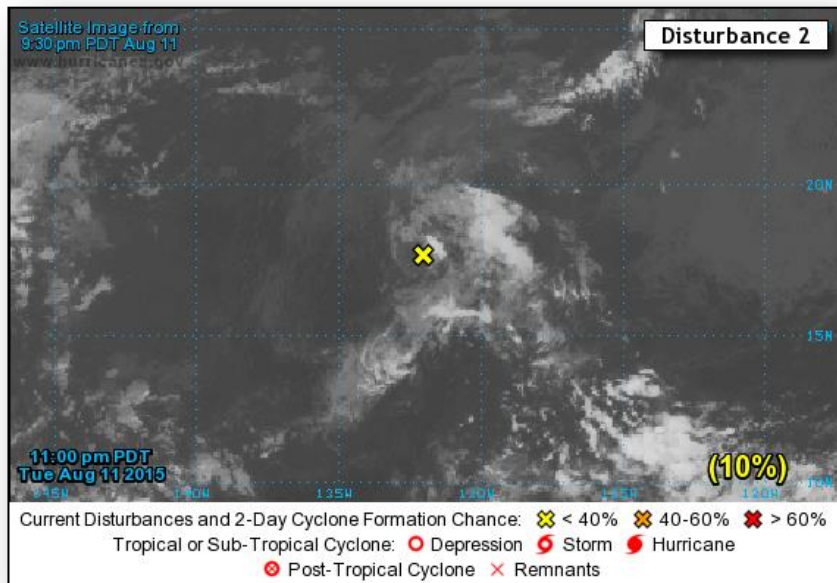
2-Day Tropical Outlook – Eastern Pacific



Disturbance 1: (as of 2:00 a.m. EDT)

- Disorganized cloudiness and showers
- Located few hundred miles SSW off coast of Mexico
- Moving WNW at 15 mph
- Environmental conditions support redevelopment later this week; system likely to become a tropical cyclone by Sunday
- Formation chance through 48 hours: Low (20%)
- Formation chance through 5 days: High (90%)

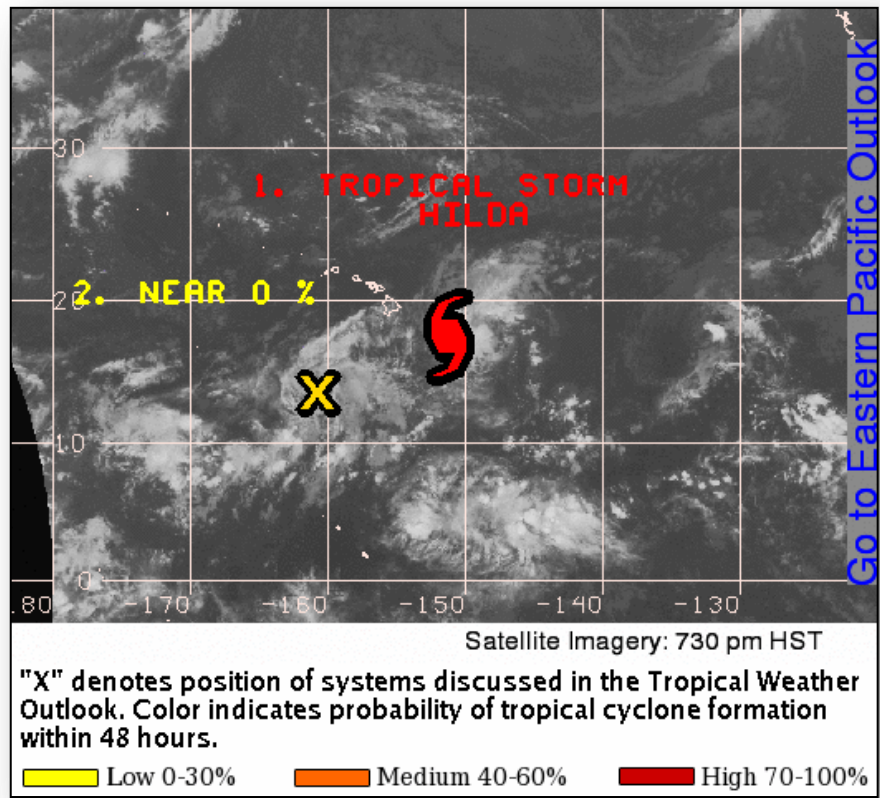
2-Day Tropical Outlook – Eastern Pacific



Disturbance 2: (as of 2:00 p.m. EDT)

- Minimal showers and thunderstorms
- Located 1,500 miles WSW of southern tip of Baja California, Mexico
- Moving W at 10 mph
- Development low due to environmental conditions
- Formation chance through 48 hours: Low (10%)
- Formation chance through 5 days: Low (10%)

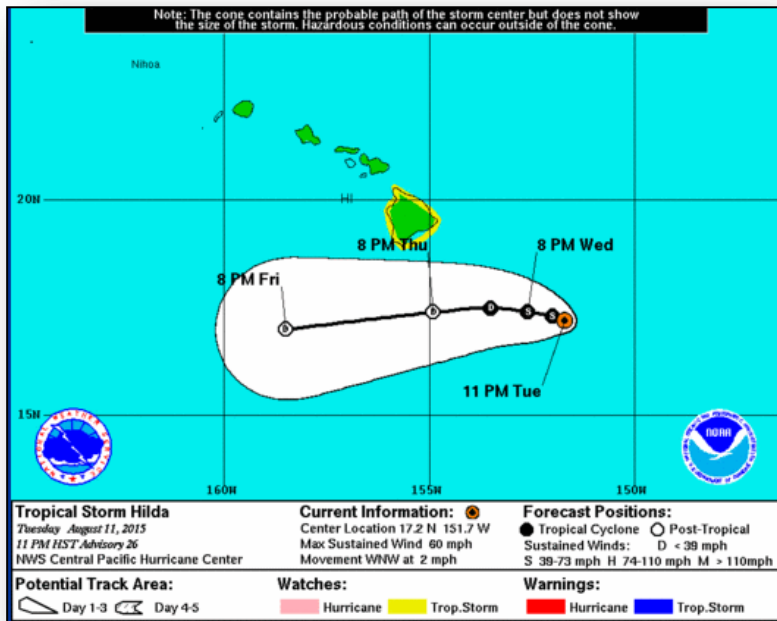
Tropical Outlook – Central Pacific



Disturbance 2: (as of 2:00 p.m. EDT)

- Area of disturbed weather associated with a weak trough
- Located 550 miles SSW of Honolulu, HI
- Moving W at 10 mph
- Atmospheric conditions are expected to remain unfavorable for tropical cyclone development
- Formation chance through 48 hours: Low (near 0%)

Central Pacific – Tropical Storm Hilda



Tropical Storm Hilda: (Advisory #26 as of 5:00 a.m. EDT)

- Located 280 miles SE of Hilo, HI; Moving WNW at 2 mph
- Maximum sustained winds 60 mph
- Slow motion expected today w/ gradual increase of forward speed
- Weakening as forward motions slows over next 48 hours
- Tropical storm force winds extending outward 85 miles
- Tropical Storm Watch remains in effect for Hawaii County
- Rainfall: 6-12 inches expected with up to 18 inches possible
- High Surf: Large swells on E/SE facing shores of Hawaiian Islands
- Flash floods, landslides and mudslides are possible across the Hawaiian Islands early Thursday morning into the weekend

Disaster Requests & Declarations

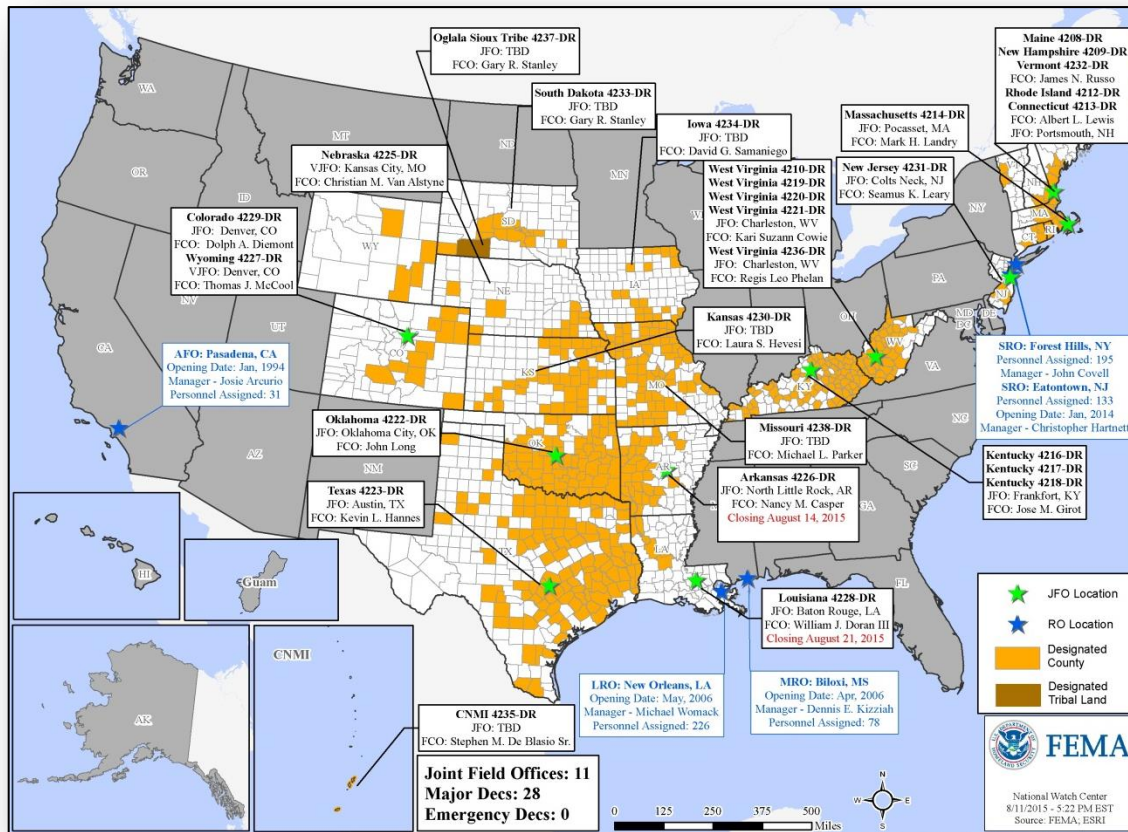


Declaration Requests in Process		Requests APPROVED (since last report)	Requests DENIED (since last report)
2	Date Requested	0	0
KY – DR Severe Storms, Tornadoes, Straight-line Winds, Flooding, and Mudslides	July 24, 2015		
AK – DR Wildfires	July 24, 2015		

Open Field Offices as of August 12



FEMA

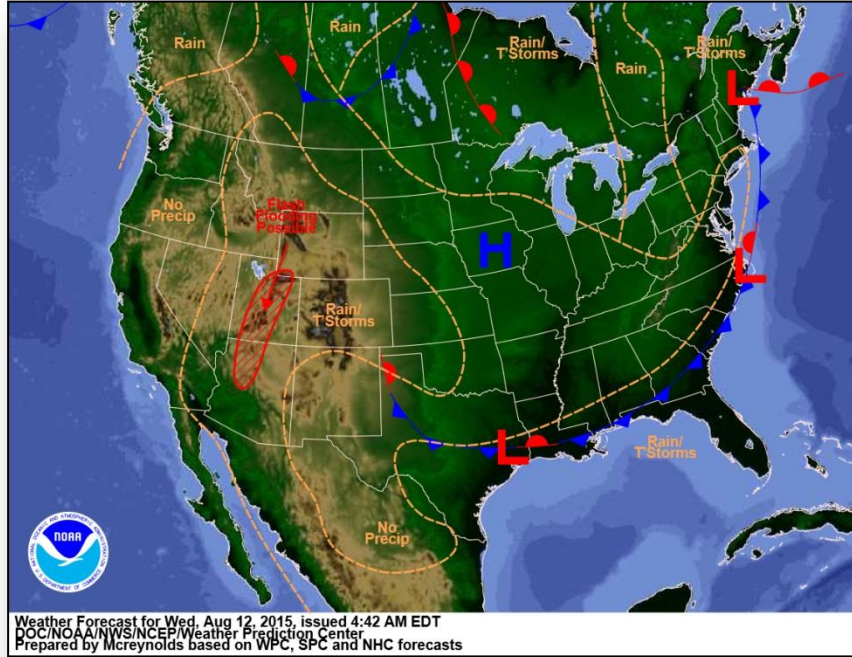


Joint Preliminary Damage Assessments

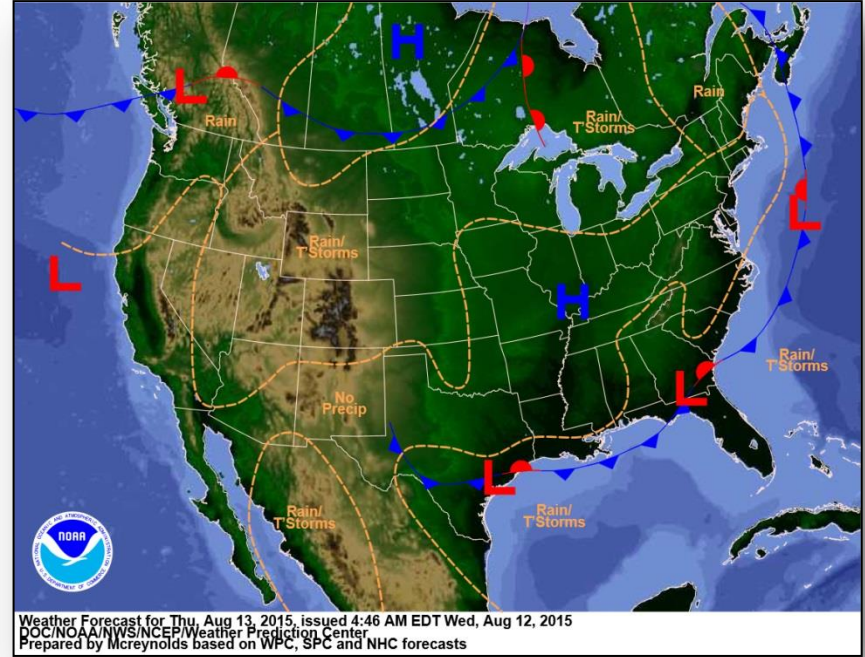


Region	State / Location	Event	IA/PA	Number of Counties		Start – End
				Requested	Complete	
IV	FL	Heavy Rain and Flooding July 26, 2015 and continuing	IA	4	0	8/12-TBD
			PA	4	0	8/12-TBD
V	IL	Severe Weather June-July 2015	IA	7	6	8/6-TBD
			PA	23	0	8/10-TBD
	IN	Severe Storms, Tornadoes, Straight Line Winds & Flooding June 7 – July 29, 2015	PA	26	0	TBD-TBD
IX	CNMI	Typhoon Soudelor (Tinian) August 1-3, 2015	IA	1	0	8/11-TBD

National Weather Forecast



Today

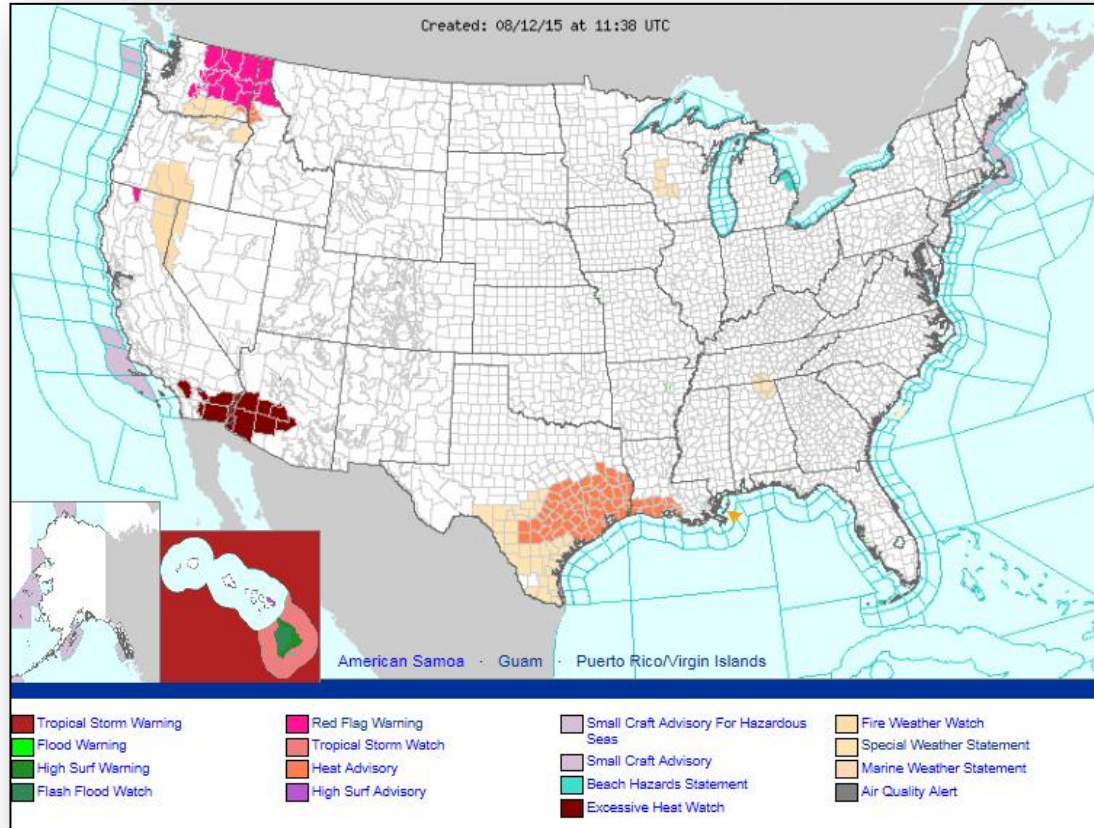


Tomorrow

Active Watches/Warnings



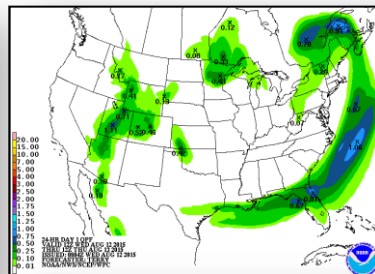
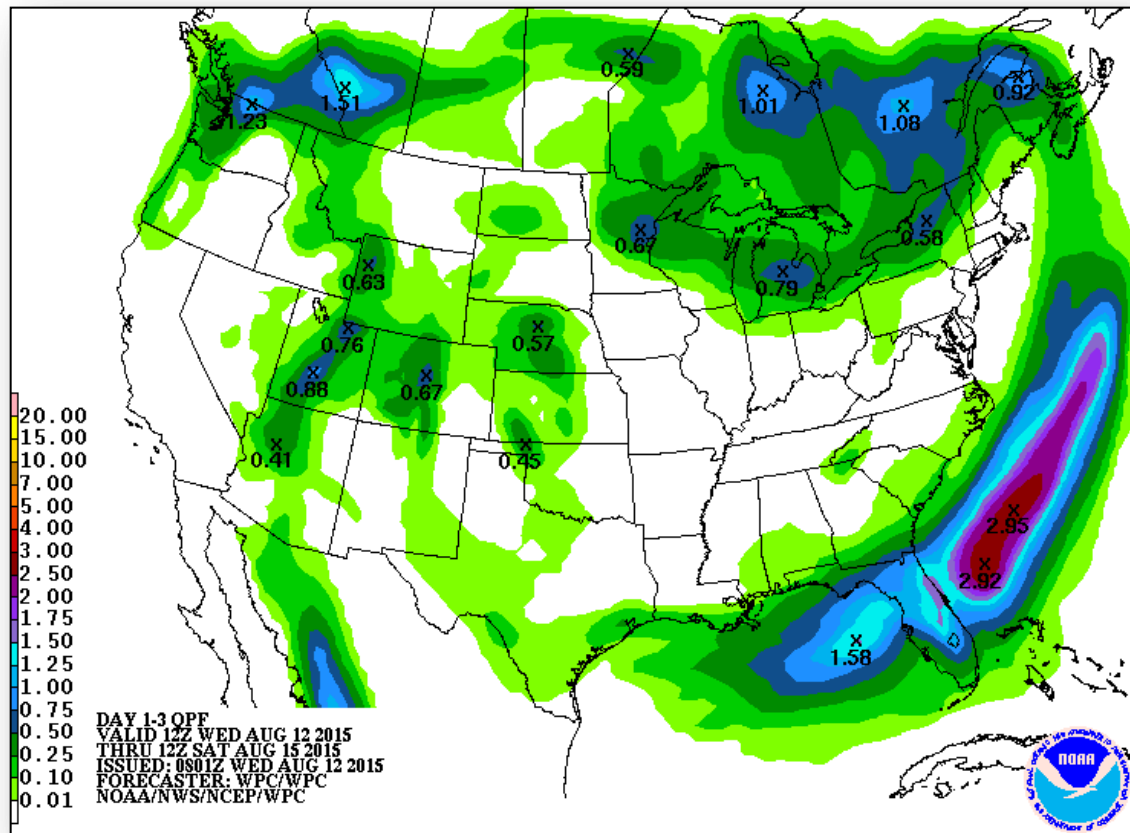
FEMA



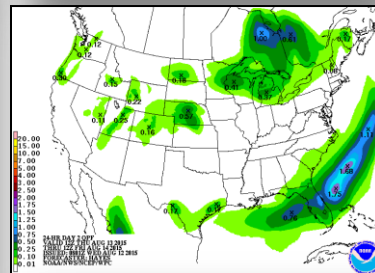
Precipitation Forecast, 1 – 3 Day



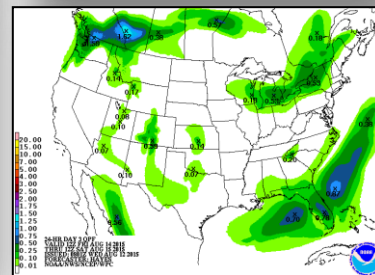
FEMA



Day 1

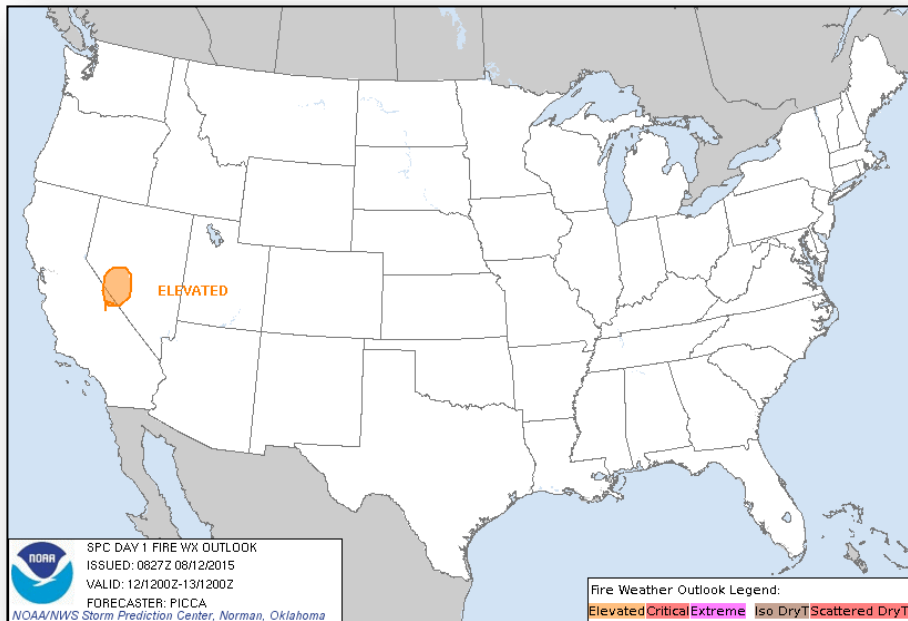


Day 2

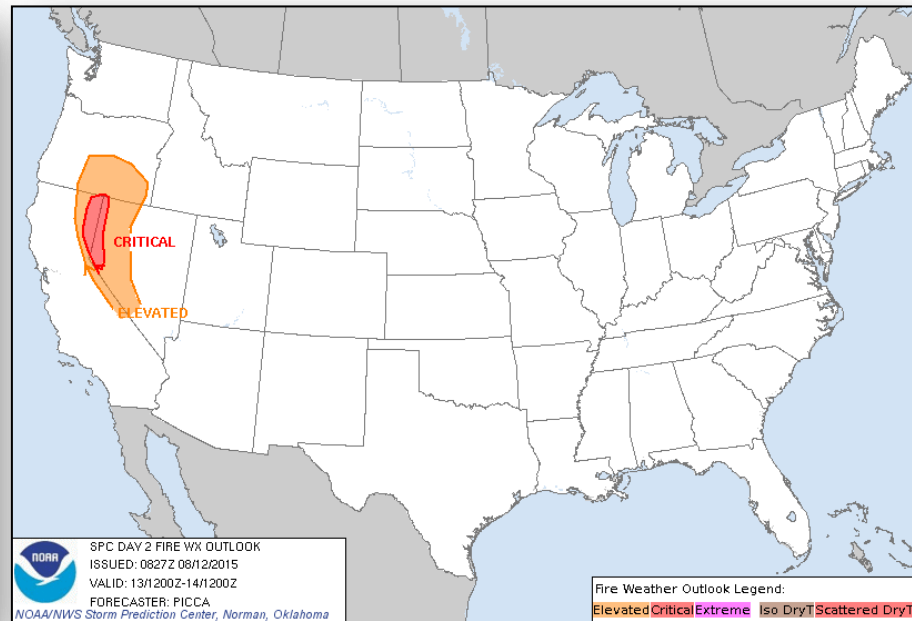


Day 3

Fire Weather Outlook, Days 1 – 2

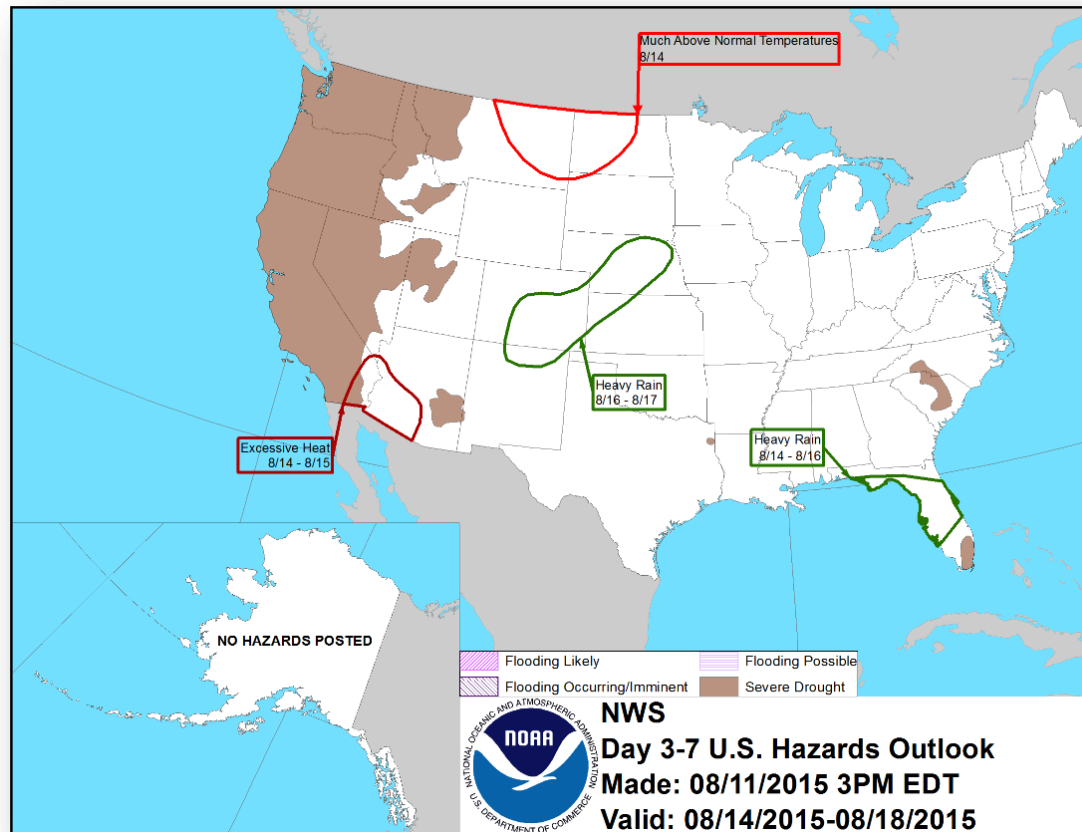


Today



Tomorrow

Hazard Outlook, August 14 – 18

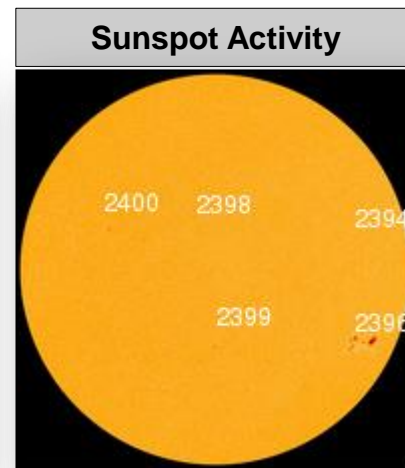
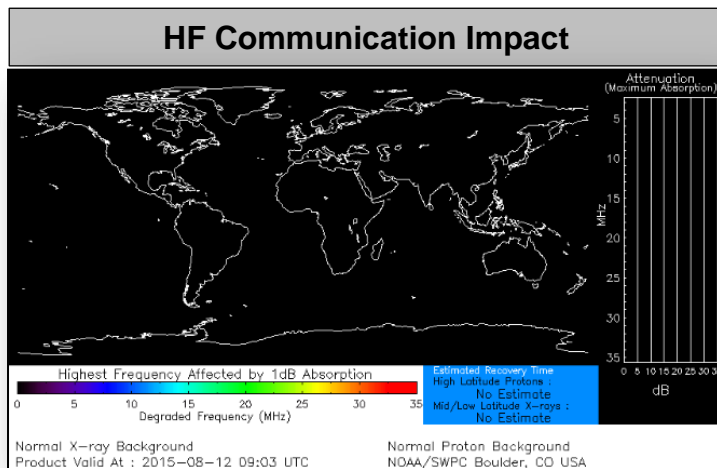


Space Weather



FEMA

	Past 24 Hours	Current	Next 24 Hours
Space Weather Activity:	None	None	None
• Geomagnetic Storms	None	None	None
• Solar Radiation Storms	None	None	None
• Radio Blackouts	None	None	None



FEMA Readiness – Deployable Teams /Assets



Deployable Teams/Assets									
Resource	Status	Total	FMC Available		Partially Available	Not Available	Detailed, Deployed, Activated	Comments	Rating Criterion
FCO		35	12	34%	0	1	22		OFDC Readiness: FCO Green Yellow Red Type 1 3+ 2 1 Type 2 4+ 3 2 Type 3 4 3 2 FDRC 3 2 1
FDRC		9	6	67%	0	0	5		
US&R		28	27	96%	0	1	0	NM-TF1 (Red) – Personnel shortages	<ul style="list-style-type: none"> • Green = Available/FMC • Yellow = Available/PMC • Red = Out-of-Service • Blue = Assigned/Deployed
National IMAT		3	3	100%	0	0	0		<ul style="list-style-type: none"> • Green: 3 avail • Yellow: 1-2 avail • Red: 0 avail (<i>Individual N-IMAT red if 50% of Section Chiefs and/or Team Leader is unavailable for deployment.</i>)
Regional IMAT		13	4	31%	0	1	8	Fully Mission Capable (Green): RI to NH/MA Aug 6 - TBD (training) Deployed (Blue): RV to RVI supporting severe weather/flooding RVI (Team 1 & 2) to TX & personnel to OK RVII supporting FEMA-4238-DR-MO RVIII (Team 1) supporting FEMA-4227-DR-WY & FEMA-4229-DR-CO RIX (Team 1 & 2) Deployed to Guam & CNMI Not Mission Capable (Red): Personnel shortages/staff adjustments RIV (Team 3)	<ul style="list-style-type: none"> • Green: 7 or more avail • Yellow: 4 - 6 teams available • Red: > 8 teams deployed/unavailable <i>R-IMAT also red if TL Ops/Log Chief is unavailable & has no qualified replacement</i>
MCOV		59	46	78%	0	8	5	5 units in TX	<ul style="list-style-type: none"> • Green = 80 – 100% avail • Yellow = 60 – 79% avail • Red = 59% or below avail • Readiness remains 95%

FEMA Readiness – National/Regional Teams



National/Regional Teams									
Resource	Status	Total	FMC Available		Partially Available	Not Available	Status	Comments	Rating Criterion
NWC		5	5	100%	0	0	Not Activated		• Green = FMC • Yellow = PMC • Red = NMC
NRCC		2	344	89%	0	44	Not Activated		
HLT		1	N/A	N/A	0	0	Activated		
DEST							Not Activated		
RRCCs		10	10	100%	0	0	Activated	Region IX RRCC Level III Region VIII RRCC at Enhanced Watch	
RWCs/MOCs		10	10	100%	0	0	Not Activated	RIX RWC to Enhanced Watch	



FEMA

FEMA's mission is to support our citizens and first responders to ensure that as a nation we work together to build, sustain, and improve our capability to prepare for, protect against, respond to, recover from, and mitigate all hazards.