

The Disaster Center is dedicated to the idea that disaster mitigation is cost effective and individuals pursuing their own interest are the greatest potential force for disaster reduction.

Please consider making a small donation to the Disaster Center



When disaster mitigation is cost effective, we are on the road to bringing disasters to an end.



FEMA

Daily Operations Briefing

Friday, August 14, 2015

8:30 a.m. EDT

Significant Activity: August 13-14



Significant Events: None

Tropical Activity:

- Atlantic: No tropical cyclone activity expected next 48 hours
- Eastern Pacific: Disturbance 1 – High 70%
- Central Pacific: Post-Tropical Depression Hilda (FINAL)
- Western Pacific: Tropical Depression 16W

Significant Weather:

- Severe thunderstorms possible: Northern Rockies & Northern Plains
- Showers & thunderstorms: Pacific Northwest, Northern Intermountain to Southwest; Rockies, Southern Plains; Southeast; Great Lakes to Northeast
- Red Flag Warnings and Critical/Elevated Fire Weather Areas: WA, ID, MT, OR, CA & NV
- Space Weather: Past 24 hours – no space weather storms occurred; next 24 hours – none predicted

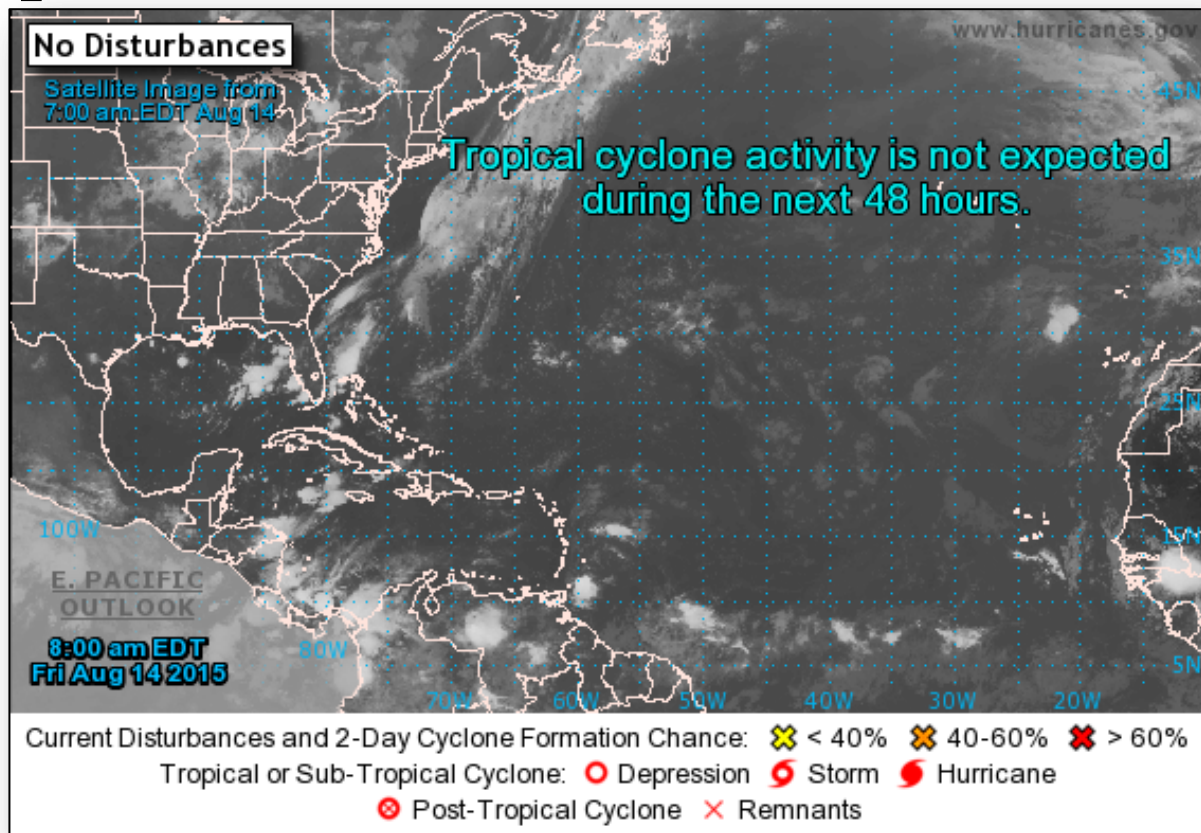
Declaration Activity:

- FMAGs approved for Clearwater Complex Lawyer Branch Fire, ID and Nine Mile Fire, WA

2-Day Tropical Outlook – Atlantic



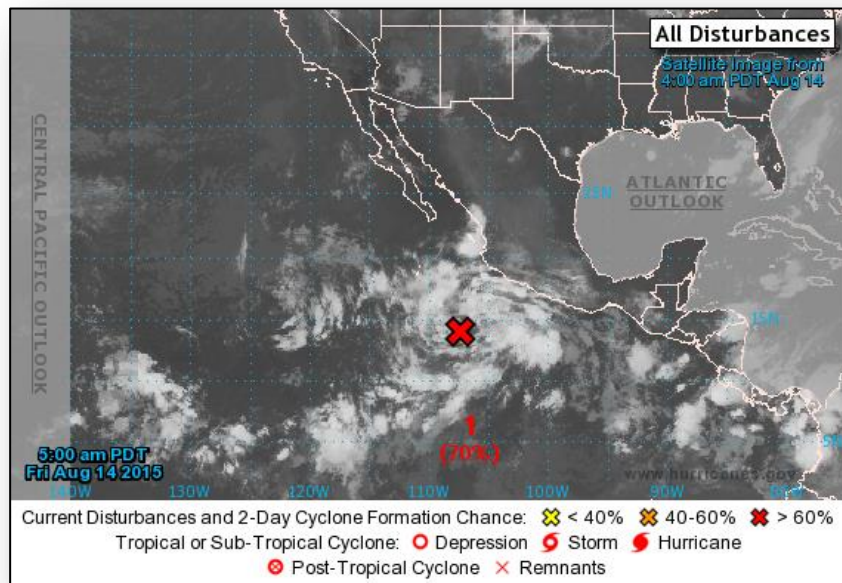
FEMA



2-Day Tropical Outlook – Eastern Pacific



FEMA



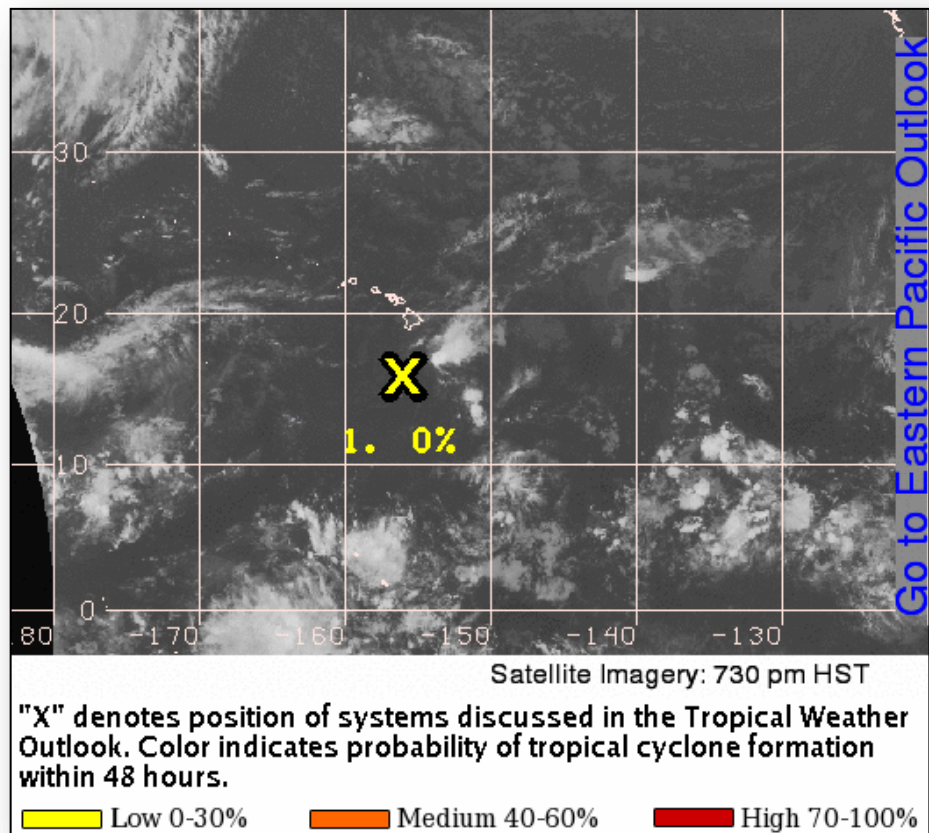
Disturbance 1: (as of 8:00 a.m. EDT)

- Located 350 miles SSW of Manzanillo, Mexico
- Moving WNW at 10-15 mph
- Environmental conditions conducive for a tropical depression to form over the weekend
- Formation chance through 48 hours: High (70%)
- Formation chance through 5 days: High (90%)

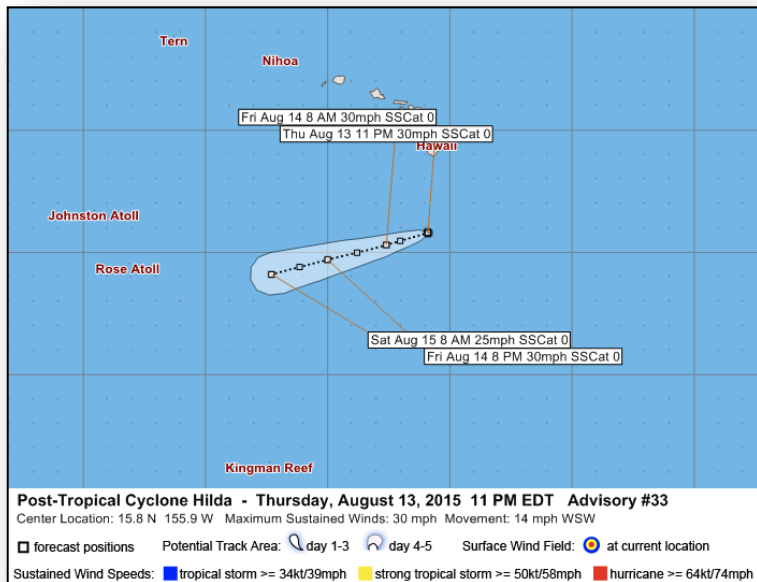
Tropical Outlook – Central Pacific



FEMA



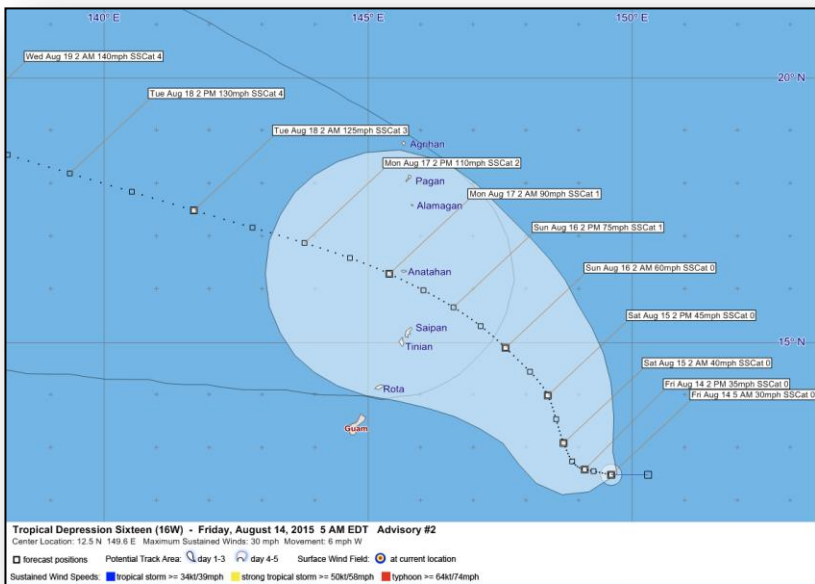
Central Pacific – Post-TD Hilda (*Final*)



Post- Tropical Depression Hilda: (*Advisory 33 as of 11:00 p.m. EDT*)

- Remnant low located 275 miles S of Hilo, HI
- Moving WSW at 14 mph
- Maximum sustained winds 30 mph
- Gradual weakening expected through tonight; dissipating will begin on Sat
- May produce heavy rainfall north of path
- Life-threatening flash floods and mudslides possible across portions of Big Island into Sat
- This was last Public Advisory issued on Hilda by Central Pacific Hurricane Center

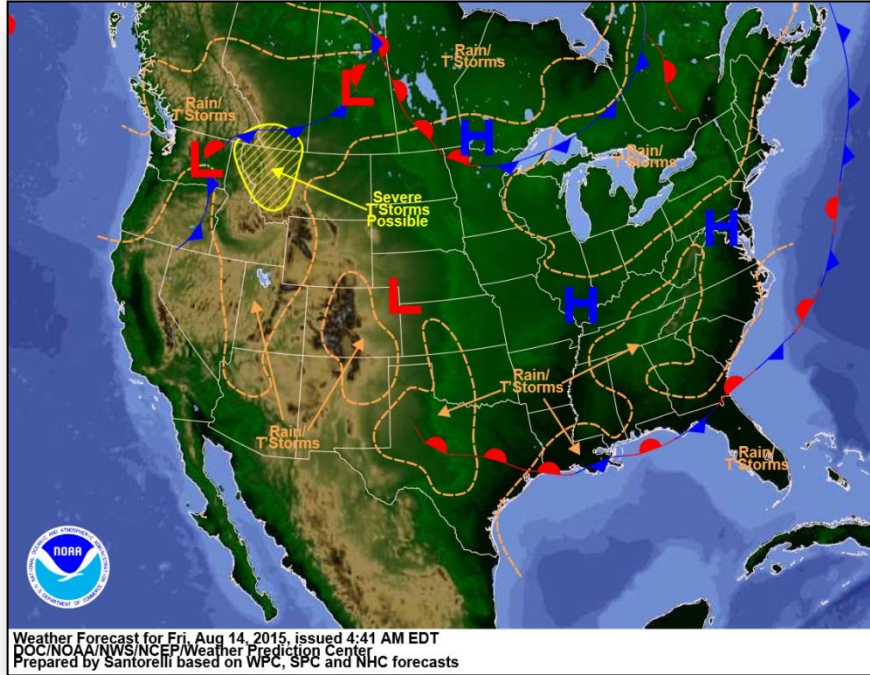
Tropical Outlook – Western Pacific



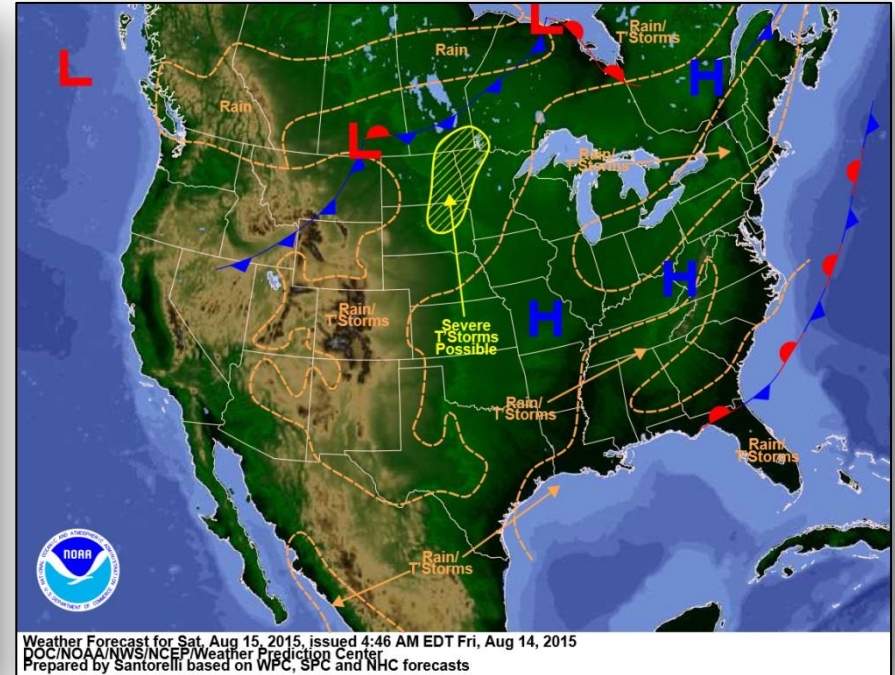
Tropical Depression 16W: (Advisory 2 as of 5:00 a.m. EDT)

- Located 315 miles SE of Saipan
- Moving W at 6 mph
- Forecast to move WNW then NW on Sat with slight decrease in forward speed
- Maximum sustained winds 30 mph
- Expected to slowly intensify next 48 hours; could become a tropical storm by Sat night
- Typhoon Watch in effect for Tinian and Saipan
- Tropical Storm Watch in effect for Guam and Rota

National Weather Forecast



Today

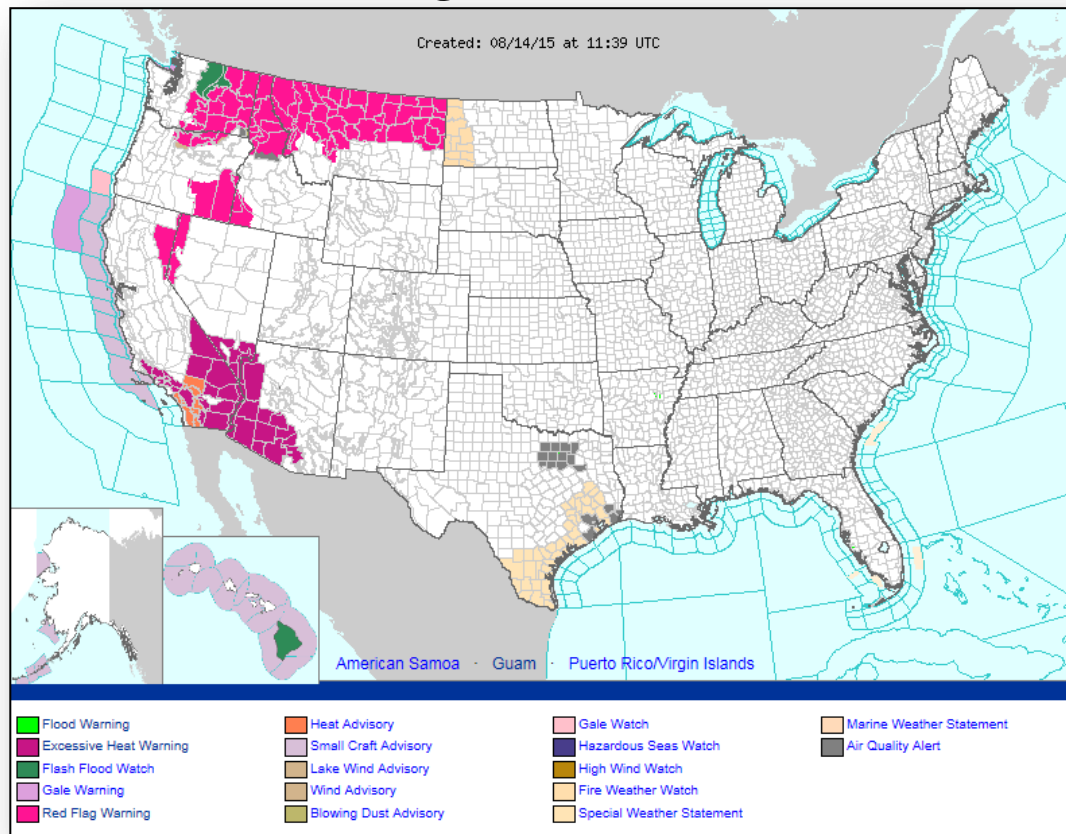


Tomorrow

Active Watches/Warnings



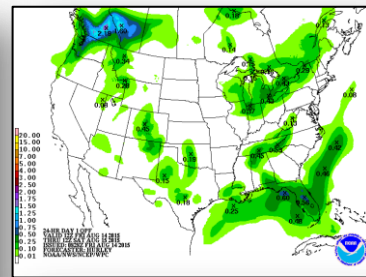
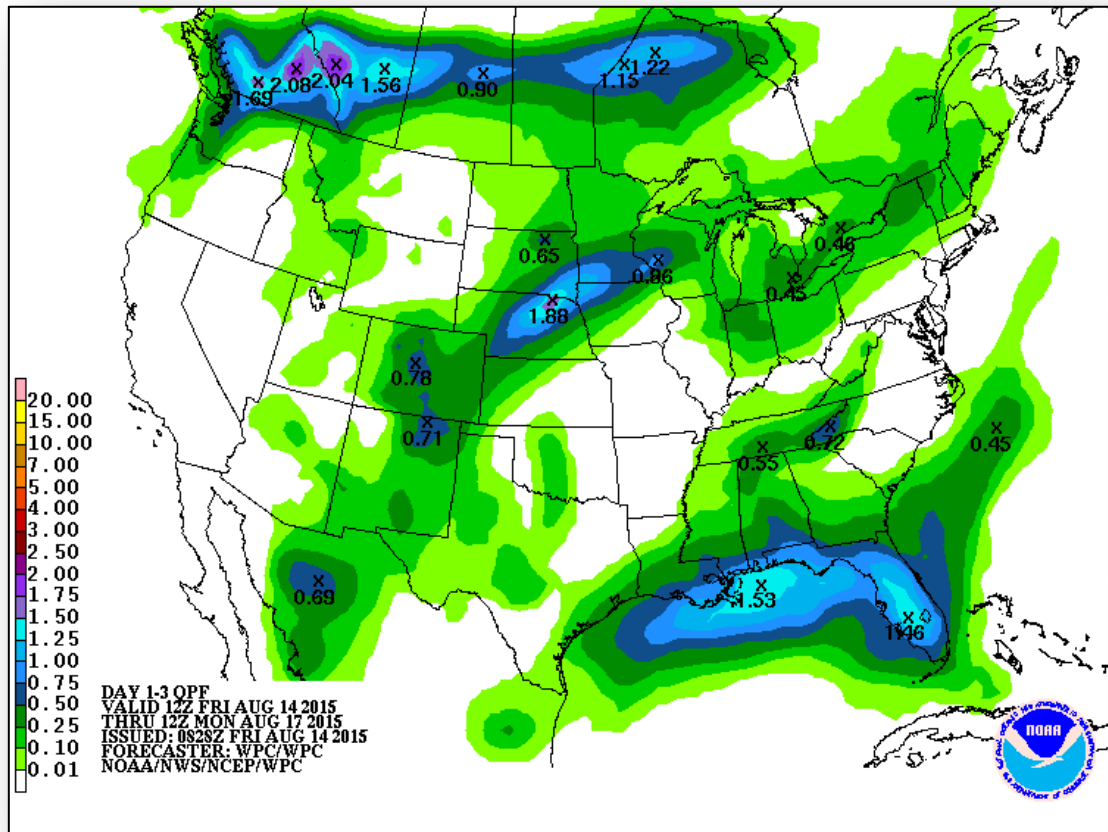
FEMA



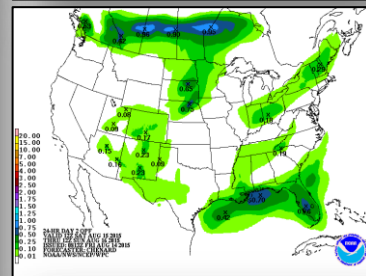
Precipitation Forecast, 1 – 3 Day



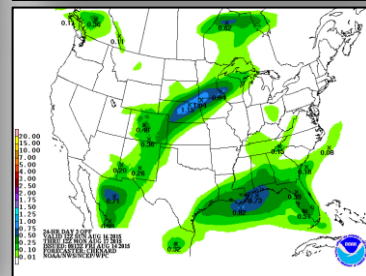
FEMA



Day 1

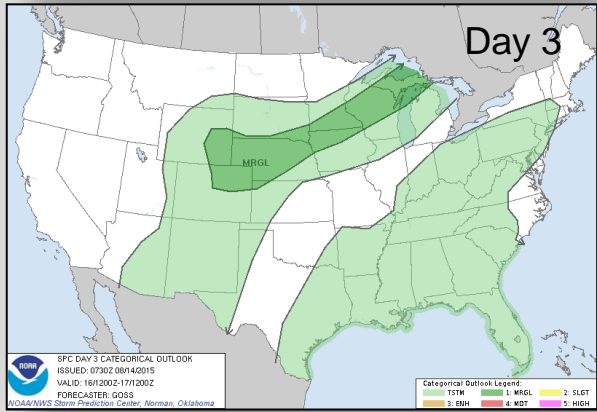
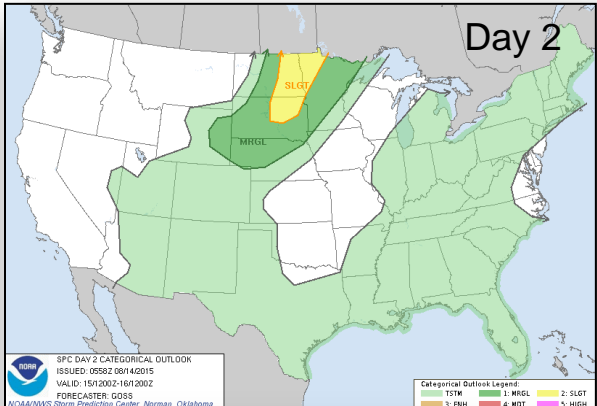
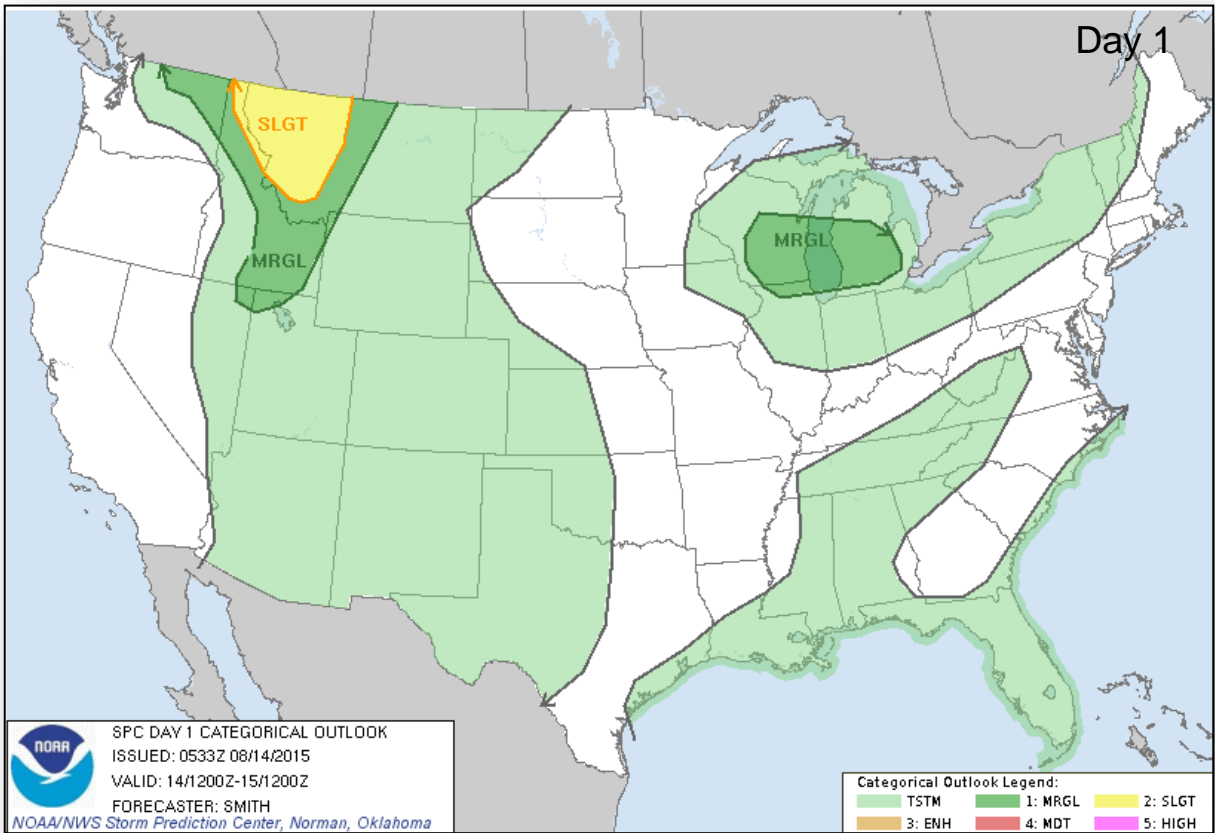


Day 2

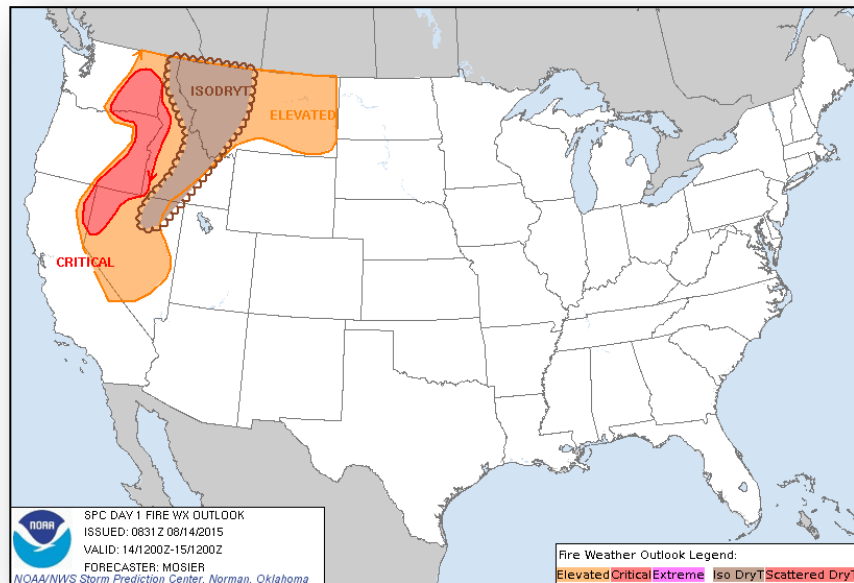


Day 3

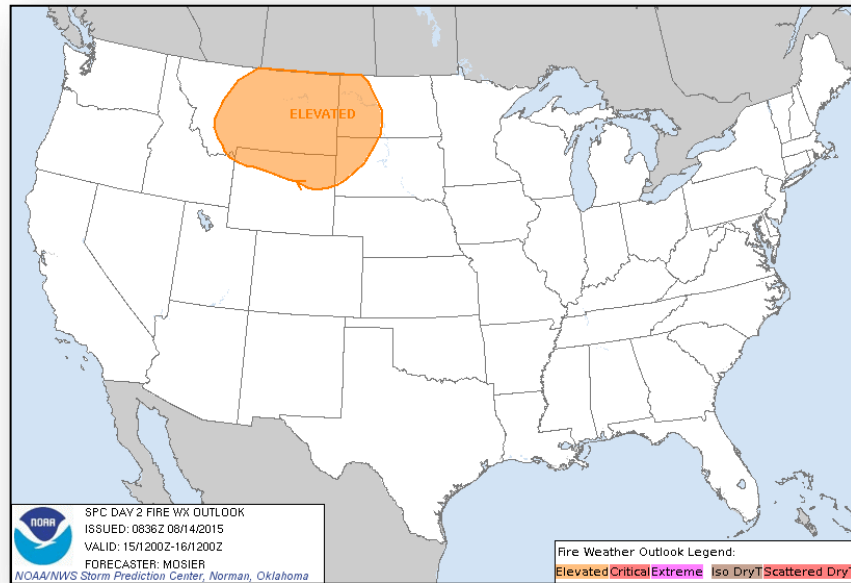
Severe Weather Outlook, Days 1 – 3



Fire Weather Outlook, Days 1 – 2



Today

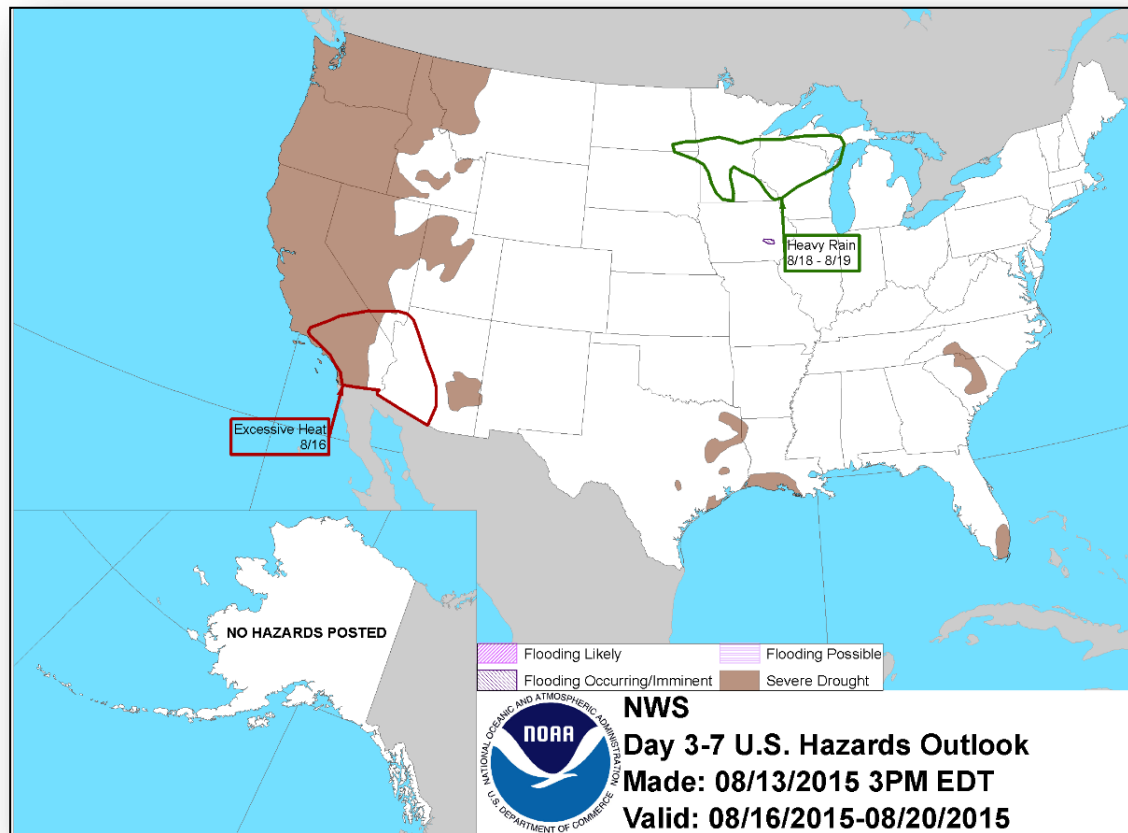


Tomorrow

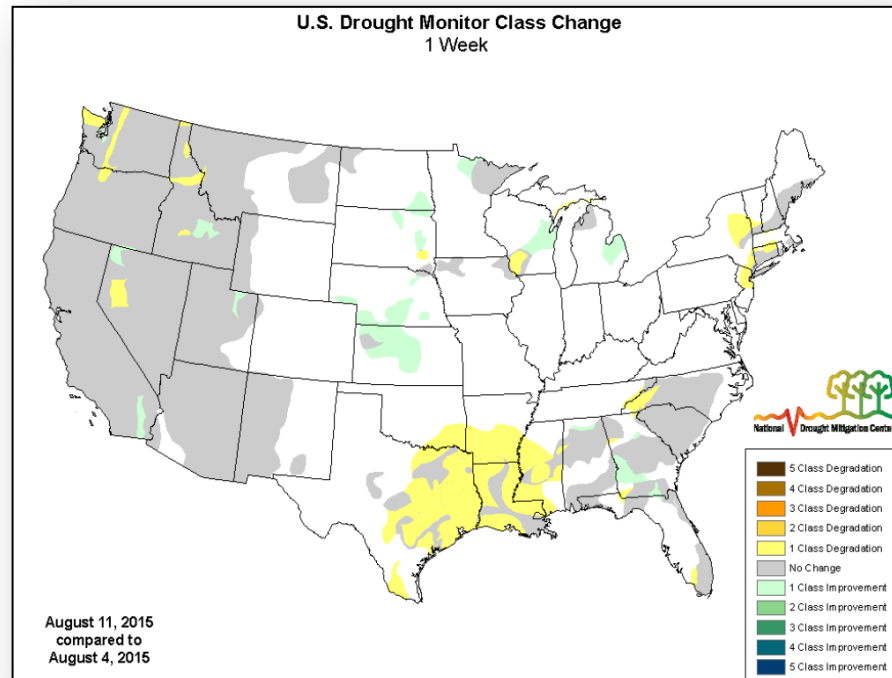
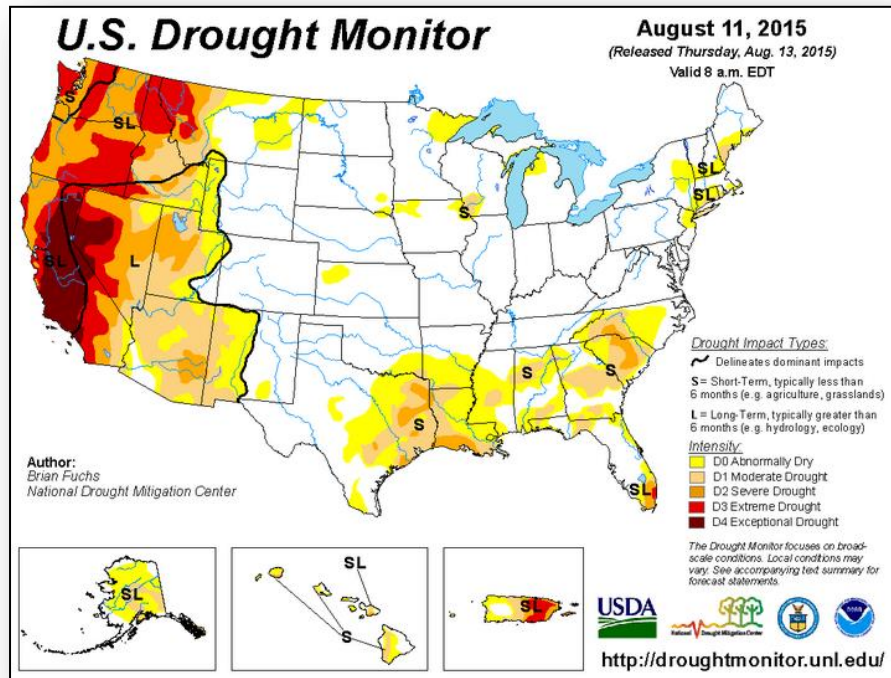
Hazard Outlook, August 16 – 20



FEMA



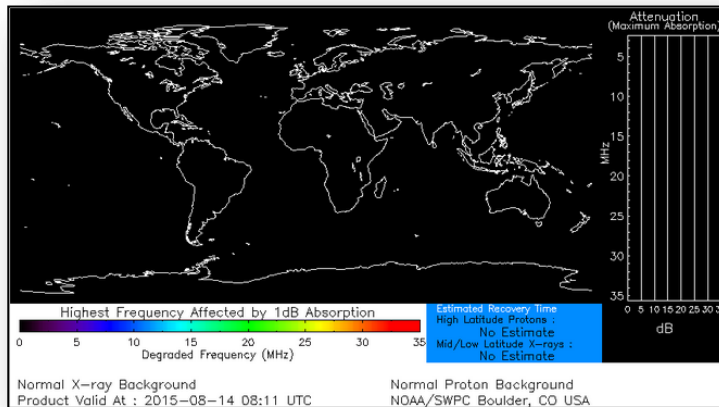
U.S. Drought Monitor



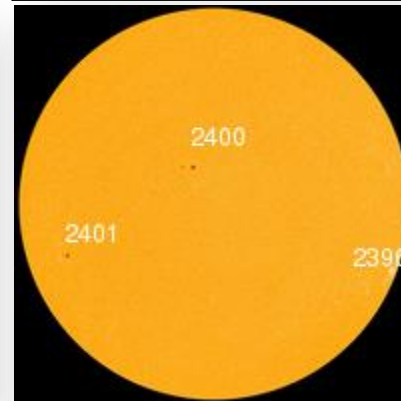
Space Weather

	Past 24 Hours	Current	Next 24 Hours
Space Weather Activity:	None	None	None
• Geomagnetic Storms	None	None	None
• Solar Radiation Storms	None	None	None
• Radio Blackouts	None	None	None

HF Communication Impact



Sunspot Activity

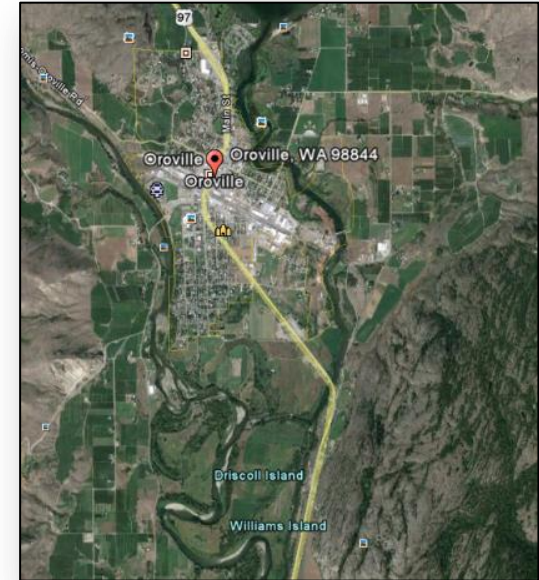


Nine Mile Fire – WA



Fire Name (County)	Location	Acres burned	% Contained	FMAG	Evacuations	Structures Lost / Threatened	Fatalities / Injuries
Nine Mile (Okanogan County)	Oroville, WA (pop. 1,986)	3,000	0%	Approved August 14 5098-FM-WA	Mandatory	12/660	0/0

- Fire began on August 13 and is burning in an urban area
- Threatening 660 homes in and around communities of Nine Mile Ranches, Old Tressel, Canyon View and Rise Road near Oroville, WA
- Multiple facilities included roads, bridges, power and natural gas lines and several private businesses
- Mandatory evacuations in effect for 436 residents
- 1 shelter open with 2 occupants
- WA State EOC and FEMA Region X remain at Normal Operations

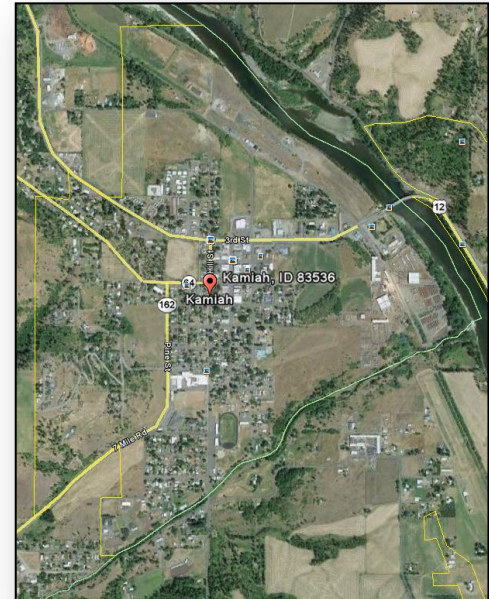


Clear Water Complex-Lawyer Branch Fire – ID



Fire Name (County)	Location	Acres burned	% Contained	FMAG	Evacuations	Structures Lost / Threatened	Fatalities / Injuries
Clear Water Complex-Lawyer Branch (Lewis & Idaho counties)	Kamiah, ID (pop. 1,320)	16,729	0-15%	Approved August 14 5099-FM-ID	1,200 Mandatory/Voluntary	0/1,650 (560 homes & 27 multiple residences)	0/0

- Fire began on August 13 and is threatening 660 homes in and around communities of Nine Mile Ranches, Old Tressel, Canyon View and Rise Road near Oroville, WA
- Multiple facilities threatened including a power substation, 2 medical clinics, an assisted living facility, 2 water treatment plants, sewage treatment plant, city facilities, significant natural resources & tribal lands
- Mandatory and voluntary evacuations in effect for 1,200 residents
- Unknown number of shelters open
- ID State EOC and FEMA Region X remain at Normal Operations



FMAG Requests and Declarations



Action (since last report)			Total	FMAG No. and State	
Requests DENIED			0		
Requests APPROVED			0	Approved August 14, 2015 5098-FM-WA, Nine Mile Fire, WA 5099-FM-ID, Clearwater Complex- Lawyer Branch Fire, ID	
Approved FMAG Data					
Year	Current YTD	MTD	Monthly Average	Cumulative Acres Burned YTD	Cumulative Denied FMAGs YTD
2015	18	7	11	110,269	2
Year	Total Previous FY	++ Yearly Average		Total Acres Burned Previous Year	Total Denied FMAGs Previous Year
2014	31	37		152,648	2
* Reflects the 3-year average for current month/ ** Reflects 3-year total average					

Disaster Requests & Declarations

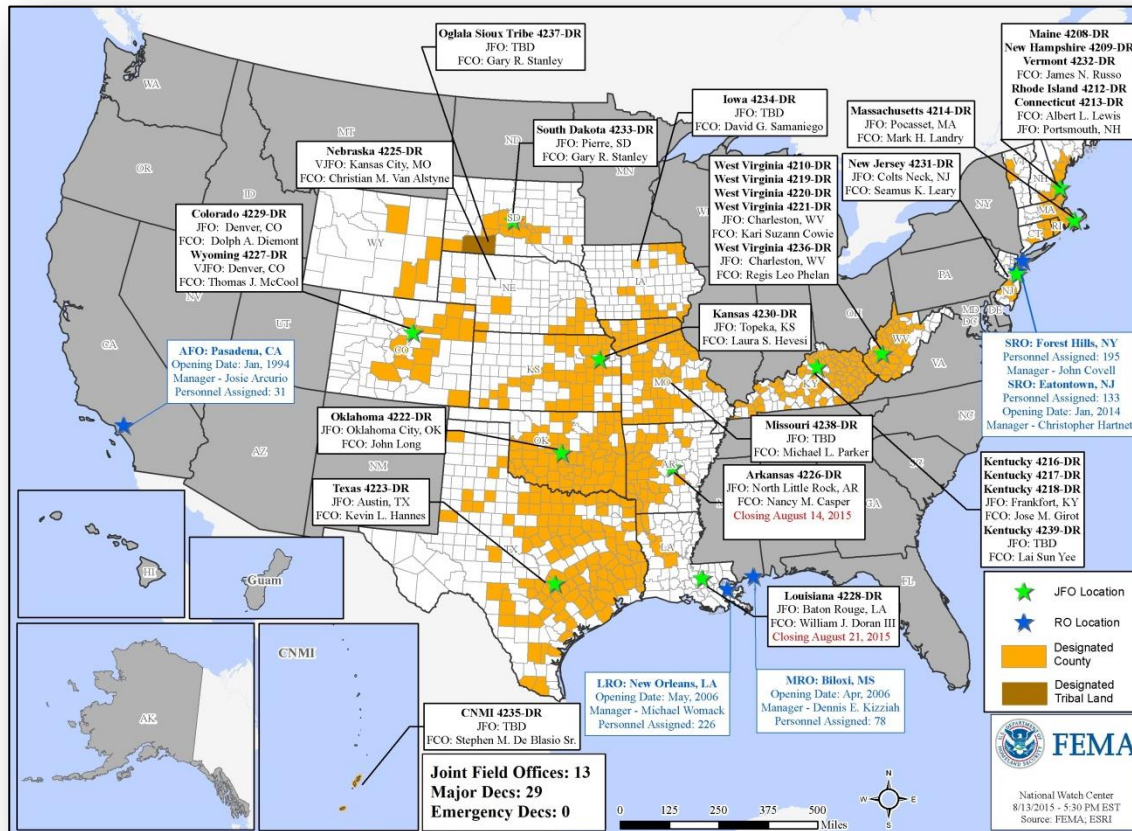


Declaration Requests in Process		Requests APPROVED (since last report)	Requests DENIED (since last report)
1	Date Requested	0	0
AK – DR Wildfires	July 24, 2015		

Open Field Offices as of August 14



FEMA



Joint Preliminary Damage Assessments



Region	State / Location	Event	I/PA	Number of Counties		Start – End
				Requested	Complete	
IV	FL	Heavy Rain and Flooding July 26, 2015 and continuing	IA	5	1 (+1)	8/12-TBD
			PA	4	0	TBD-TBD
V	IL	Severe Weather June-July 2015	IA	7	7	8/6-8/10
			PA	23	0	8/10-TBD
	IN	Severe Storms, Tornadoes, Straight Line Winds & Flooding June 7 – July 29, 2015	PA	26	0	8/18-TBD
IX	CNMI	Typhoon Soudelor (Tinian) August 1-3, 2015	IA	1	1	8/11-8/12

FEMA Readiness – Deployable Teams /Assets



Deployable Teams/Assets									
Resource	Status	Total	FMC Available		Partially Available	Not Available	Detailed, Deployed, Activated	Comments	Rating Criterion
FCO		35	11	31%	0	1	23		OFDC Readiness: FCO Green Yellow Red Type 1 3+ 2 1 Type 2 4+ 3 2 Type 3 4 3 2 FDRC 3 2 1
FDRC		9	6	67%	0	0	5		
US&R		28	27	96%	0	1	0	NM-TF1 (Red) – Personnel shortages	<ul style="list-style-type: none"> • Green = Available/FMC • Yellow = Available/PMC • Red = Out-of-Service • Blue = Assigned/Deployed
National IMAT		3	3	100%	0	0	0		<ul style="list-style-type: none"> • Green: 3 avail • Yellow: 1-2 avail • Red: 0 avail (<i>Individual N-IMAT red if 50% of Section Chiefs and/or Team Leader is unavailable for deployment.</i>)
Regional IMAT		13	2	15%	0	1	10	<u>Deployed:</u> RI to NH/MA Aug 6 - TBD (training/FMC) RIV supporting FEMA 4239-DR-KY RV to RVI supporting severe weather/flooding RVI (Team 1 & 2) to TX & personnel to OK RVII supporting FEMA-4238-DR-MO RVIII (Team 1) supporting FEMA-4227-DR-WY & FEMA-4229-DR-CO RIX (Teams 1 & 2) deployed to Guam/CNMI RX IMAT deployed to Guam EOC <u>Not Mission Capable :</u> Personnel shortages/staff adjustments RIV (Team 3)	<ul style="list-style-type: none"> • Green: 7 or more avail • Yellow: 4 - 6 teams available • Red: > 8 teams deployed/unavailable <i>R-IMAT also red if TL Ops/Log Chief is unavailable & has no qualified replacement</i>
MCOV		59	46	78%	0	8	5	5 units in TX	<ul style="list-style-type: none"> • Green = 80 – 100% avail • Yellow = 60 – 79% avail • Red = 59% or below avail • Readiness remains 95%

FEMA Readiness – National/Regional Teams



National/Regional Teams									
Resource	Status	Total	FMC Available		Partially Available	Not Available	Status	Comments	Rating Criterion
NWC		5	5	100%	0	0	Not Activated		• Green = FMC • Yellow = PMC • Red = NMC
NRCC		2	344	89%	0	44	Not Activated		
HLT		1	N/A	N/A	0	0	Activated		
DEST							Not Activated		
RRCCs		10	10	100%	0	0	Activated	Region IX RRCC Level III Region VIII RRCC at Enhanced Watch	
RWCs/MOCs		10	10	100%	0	0	Activated	Region IX Enhanced Watch	



FEMA

FEMA's mission is to support our citizens and first responders to ensure that as a nation we work together to build, sustain, and improve our capability to prepare for, protect against, respond to, recover from, and mitigate all hazards.