

The Disaster Center is dedicated to the idea that disaster mitigation is cost effective and individuals pursuing their own interest are the greatest potential force for disaster reduction.

Please consider making a small donation to the Disaster Center



When disaster mitigation is cost effective, we are on the road to bringing disasters to an end.



FEMA

Daily Operations Briefing

Saturday, August 15, 2015

8:30 a.m. EDT

Significant Activity: August 14-15



Significant Events: Tropical Storm Goni; western wildfires

Tropical Activity:

- Atlantic: No tropical cyclone activity expected next 48 hours
- Eastern Pacific: Disturbance 1 – High (90%)
- Central Pacific: No tropical cyclones expected through Sunday evening
- Western Pacific: Tropical Storm Goni (16W)

Significant Weather:

- Severe thunderstorms possible: Northern Plains to Upper Mississippi Valley
- Rain & thunderstorms: Northern Plains/Upper Mississippi Valley to Southwest; Gulf Coast to Tennessee Valley; Great Lakes/Ohio Valley to Northeast
- Red Flag Warnings: MT & ND
- Critical/Elevated Fire Weather Areas: ID, MT, WY, ND & SD
- Space Weather: Past 24 hours – strong, G3 geomagnetic storms occurred; next 24 hours – strong, G3 geomagnetic storms predicted

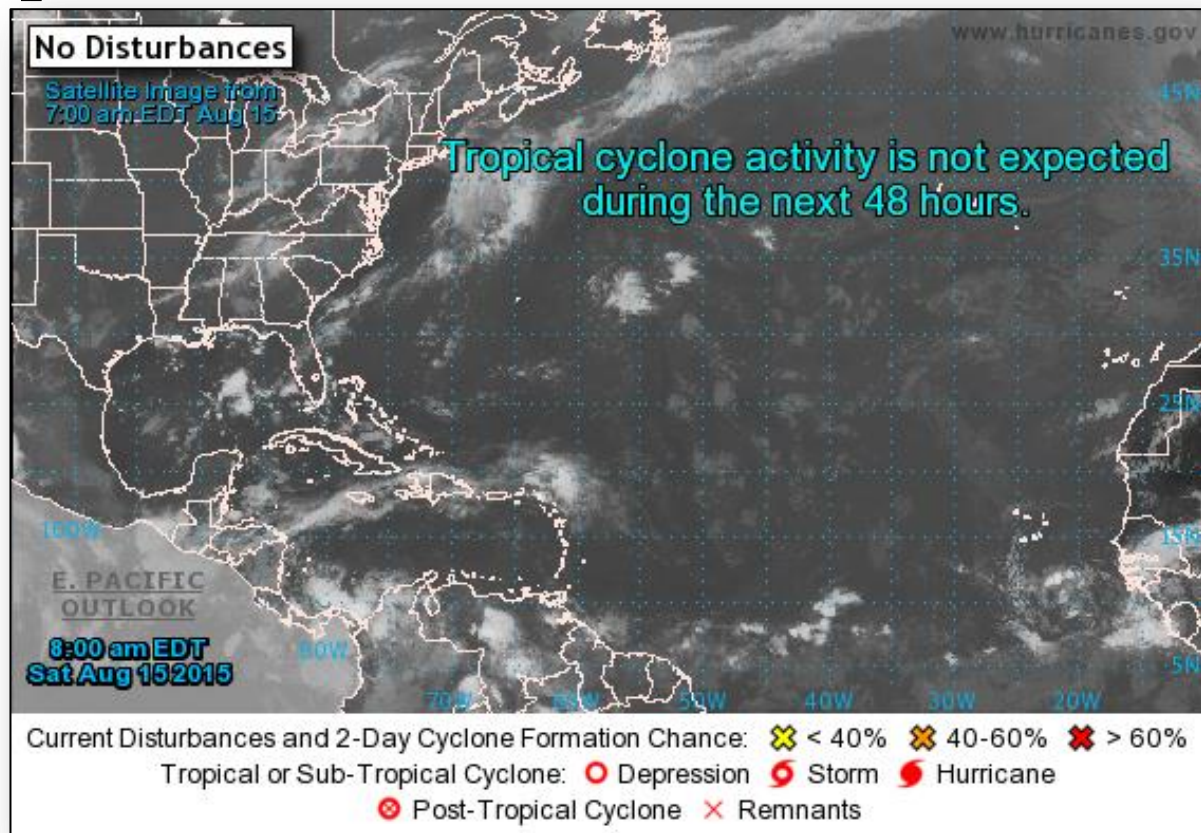
Declaration Activity:

- Amendment No. 1 to FEMA-4225-DR-NE
- FMAGs approved - Reach Complex Fire, WA; Canyon Creek Complex Fire, OR and Stickpin Fire, WA

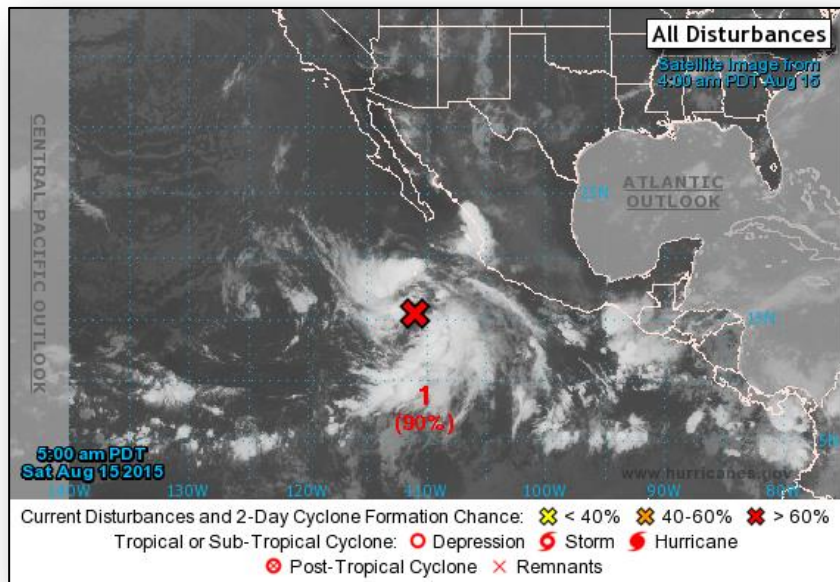
2-Day Tropical Outlook – Atlantic



FEMA



2-Day Tropical Outlook – Eastern Pacific



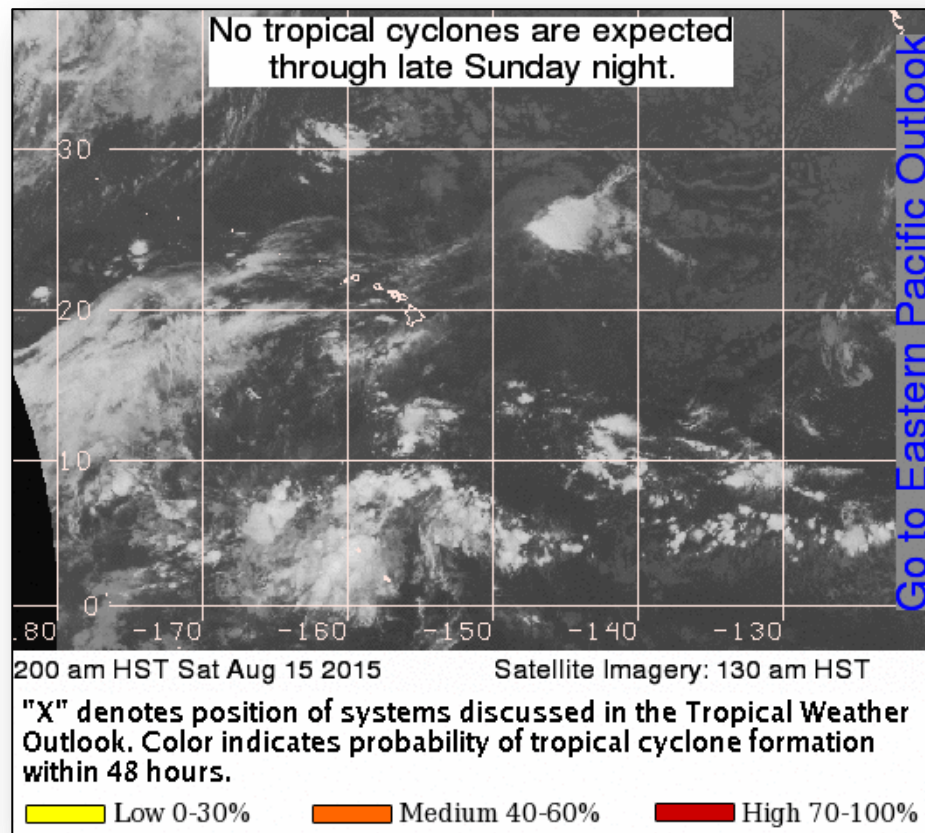
Disturbance 1: (as of 8:00 a.m. EDT)

- Located 500 miles SSW of southern tip of Baja California peninsula
- Moving WNW at 10-15 mph away from coast of Mexico
- Environmental conditions favorable for tropical depression to form later today or Sun
- By Mon, conditions are expected to become less conducive for development
- Formation chance through 48 hours: High (90%)
- Formation chance through 5 days: High (90%)

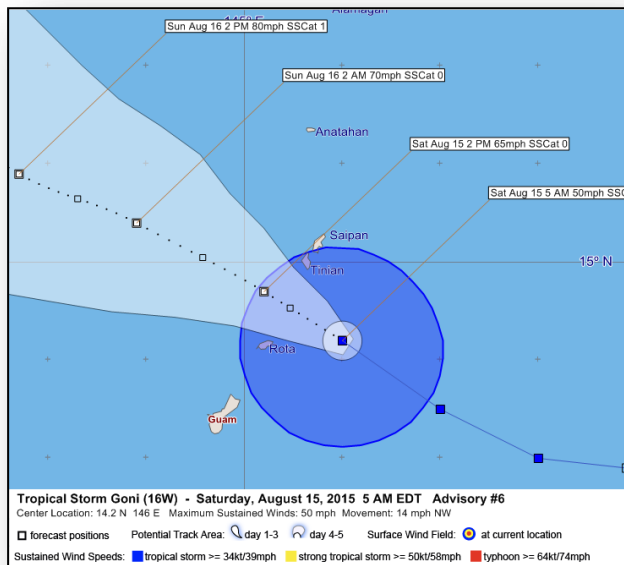
Tropical Outlook – Central Pacific



FEMA



Tropical Outlook – Western Pacific

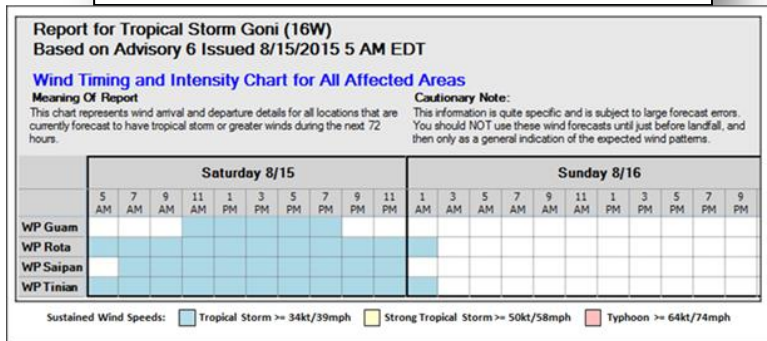


Tropical Storm Goni (16W): (Advisory 6 as of 5:00 a.m. EDT)

- Located 55 miles east of Rota; moving NW at 14 mph; expected to continue moving NW with little change in speed
- Maximum sustained winds 50 mph; expected to slowly intensify, could become a typhoon on Sun (EDT)
- Tropical Storm Warning in effect for Rota, Tinian, Saipan, Guam & adjacent coastal waters

Forecast Potential Impacts (Date/Time References in EDT):

- Winds: Tropical storm force winds will continue into early Sun morning. Locally stronger winds may occur as Goni passes through the Marianas.
- Coastal Inundation: 2-3 feet for Rota, 1-2 feet for Tinian
- Rainfall/Flash Flooding: 8-12 inches for Guam & Rota through early Mon, 3-5 inches (or more) for Saipan and Tinian; may cause flash flooding, especially in urban & low-lying areas, near streams and rivers & areas with poor drainage.



Tropical Storm Goni (16W) – Response



Situation:

- Tropical Storm Goni (16W) is impacting Guam and Commonwealth of Northern Mariana Islands (CNMI) this weekend
- Power, water & wastewater services in CNMI remain compromised due to damage from Typhoon Soudelor

Territory Response:

- CNMI EOC remains Fully Activated (24/7) in Typhoon Condition 1
- Guam EOC is Fully Activated (24/7) in Condition of Readiness 2

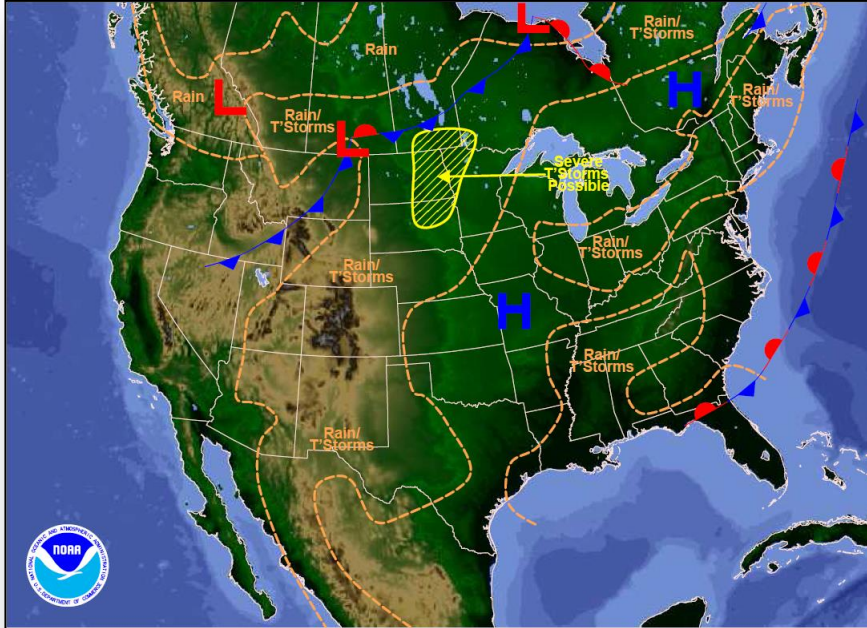
FEMA Region IX Response:

- Region IX RRCC: Level III (dayshift); will transition to Level II (24/7) at noon (EDT) today
- RWC at Enhanced Watch
- FEMA LNO in Tinian and team at Saipan EOC in close contact with Mayor of Rota
- Unified Coordination Staff (Region IX IMATs 1 & 2) including ESFs remain deployed to CNMI with supporting staff in Guam
- Region X IMAT deployed to Guam in support of Region IX and GovGuam

FEMA HQ Response:

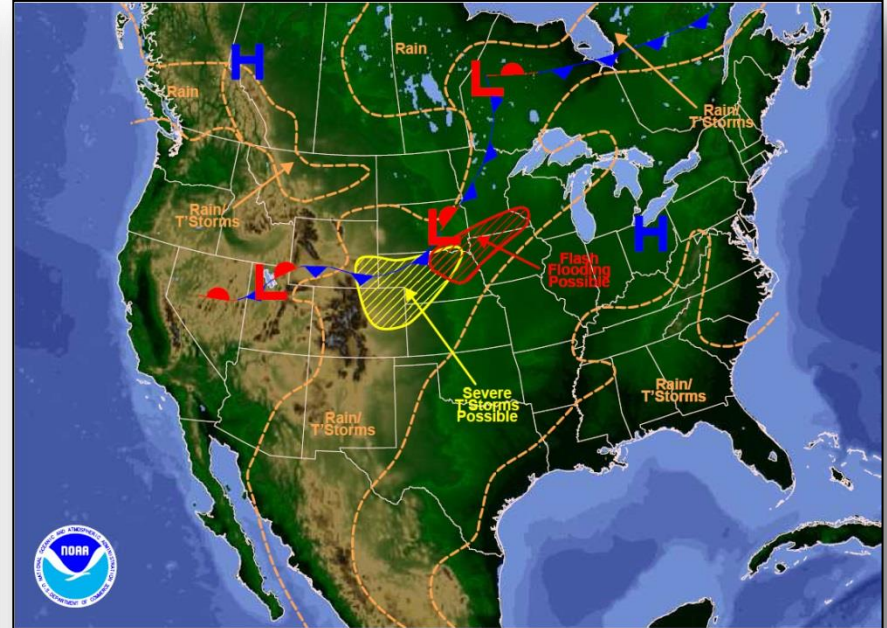
- NRCC not activated
- NWC transitioned to Enhanced Watch (24/7) at 8:00 am EDT this morning
- FEMA Logistics: DC Guam is primary for resource support; DC HI assisting
 - FSA at Saipan Army Reserve Base
 - ISB/FSA Alpha Team deployed to Guam (9); DC HI (6)

National Weather Forecast



Weather Forecast for Sat, Aug 15, 2015, issued 4:55 AM EDT
DOC/NOAA/NWS/NCEP/Weather Prediction Center
Prepared by Tate based on WPC, SPC and NHC forecasts

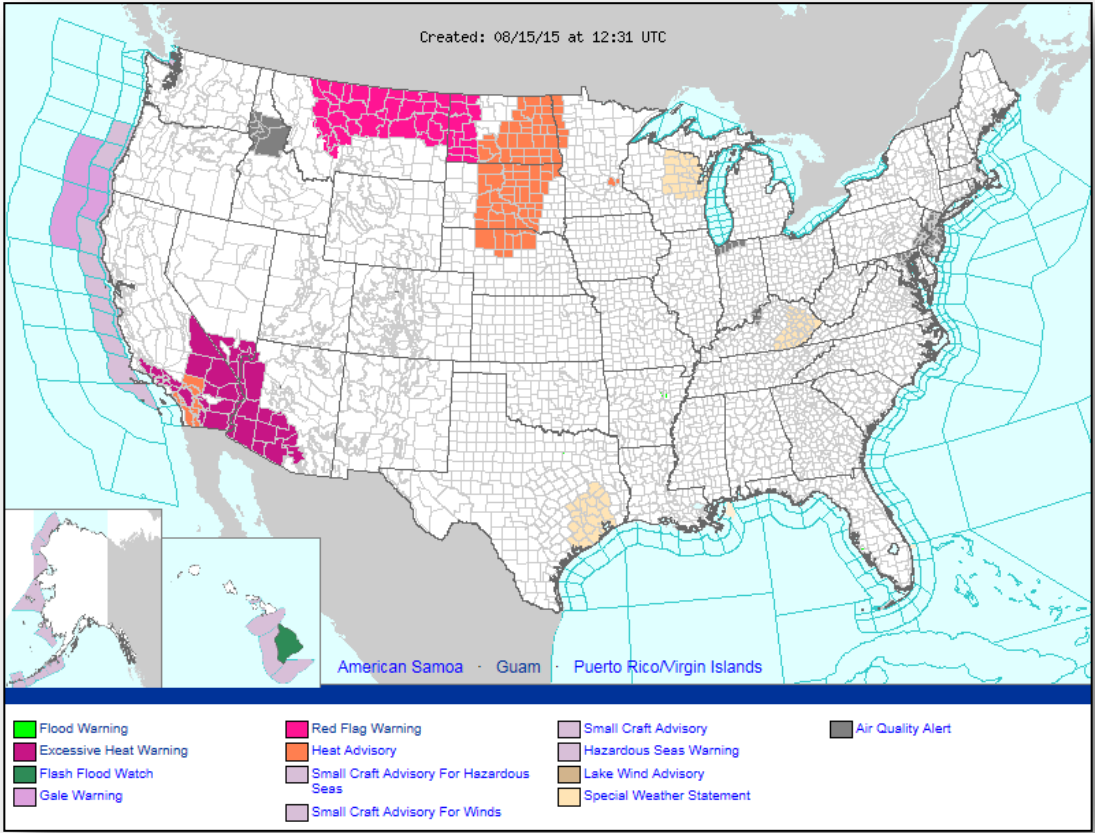
Today



Weather Forecast for Sun, Aug 16, 2015, issued 4:52 AM EDT Sat, Aug 15, 2015
DOC/NOAA/NWS/NCEP/Weather Prediction Center
Prepared by Santorelli based on WPC, SPC and NHC forecasts

Tomorrow

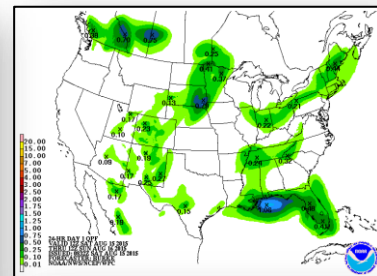
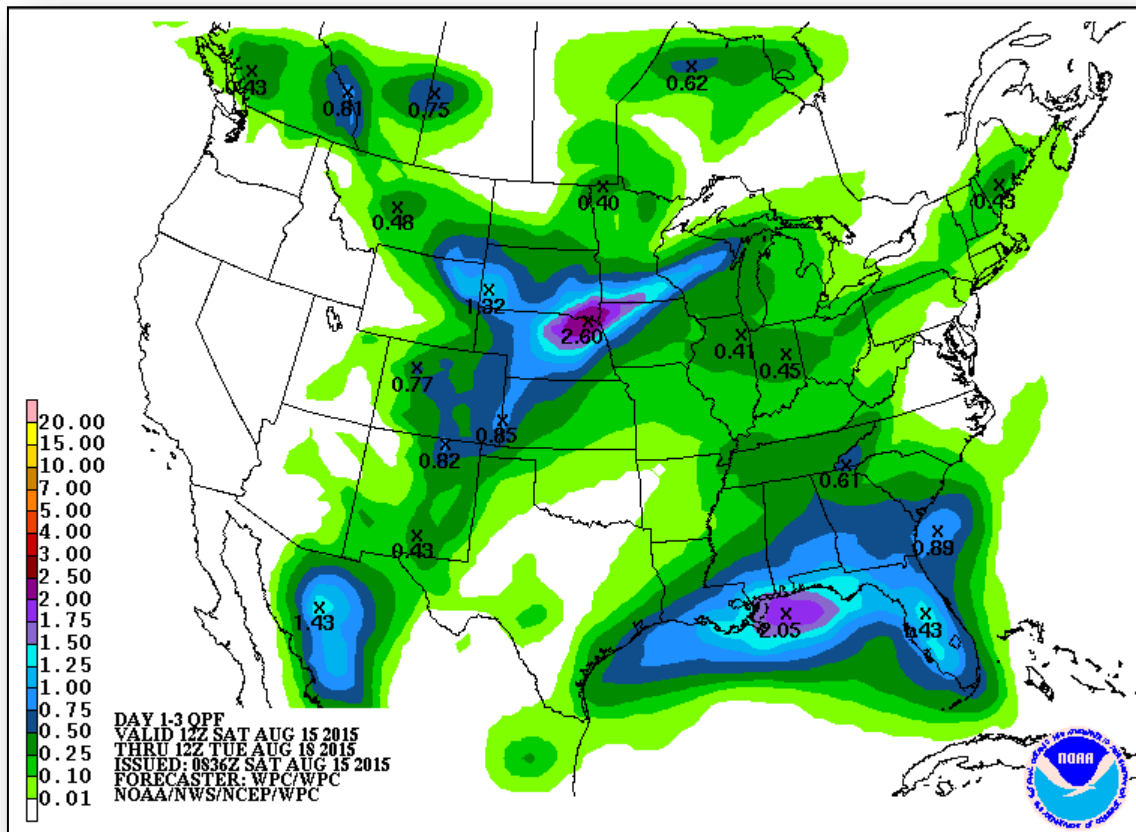
Active Watches/Warnings



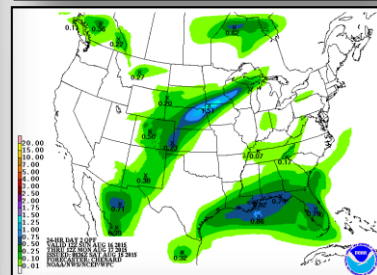
Precipitation Forecast, 1 – 3 Day



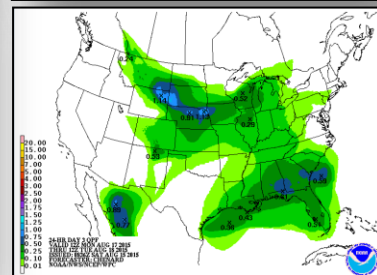
FEMA



Day 1

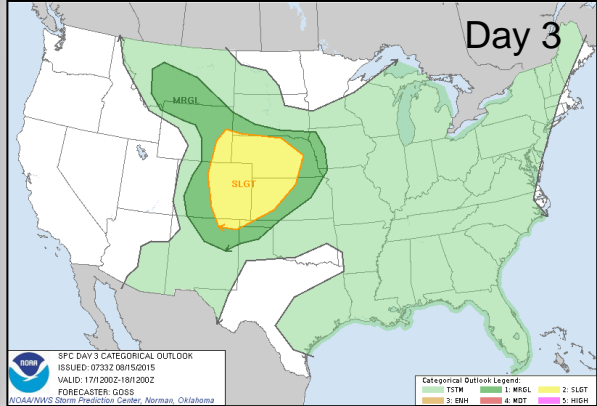
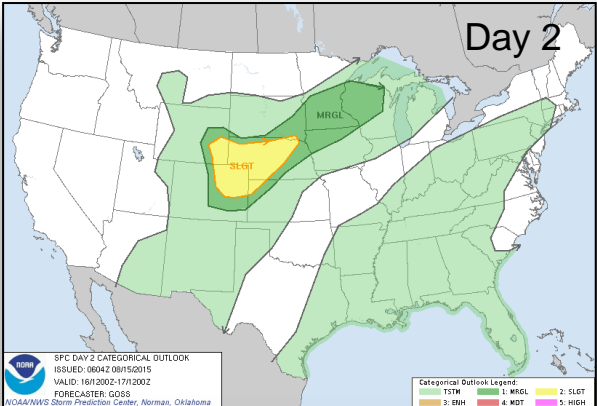
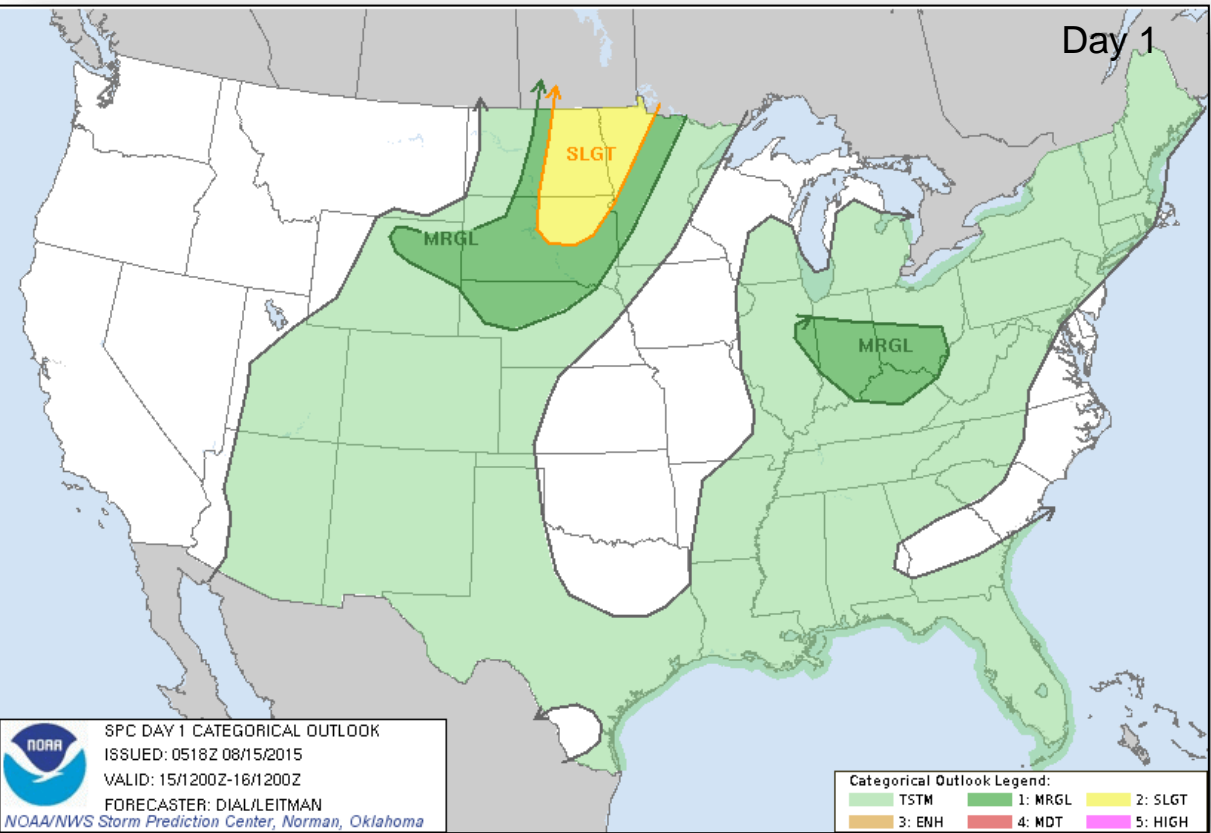


Day 2

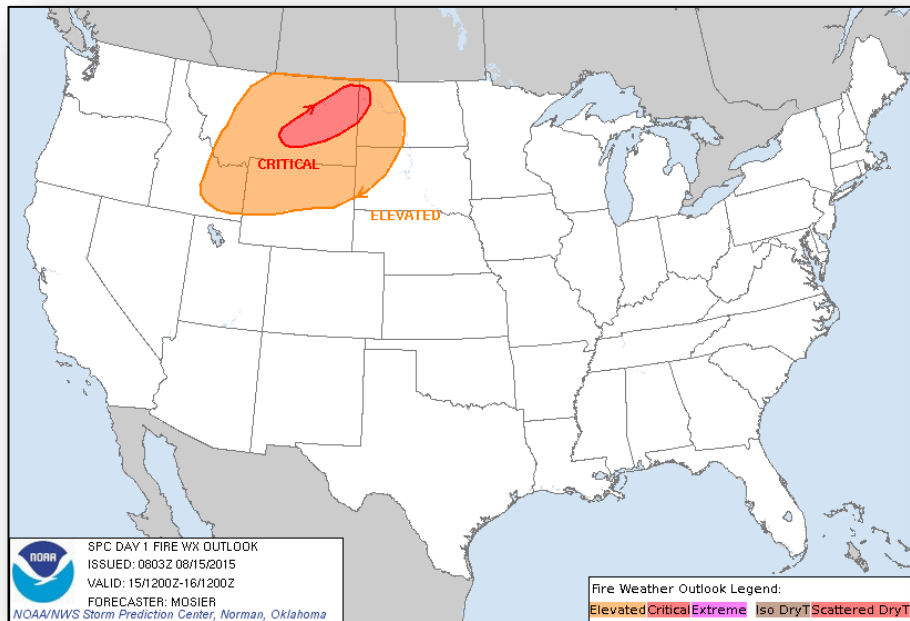


Day 3

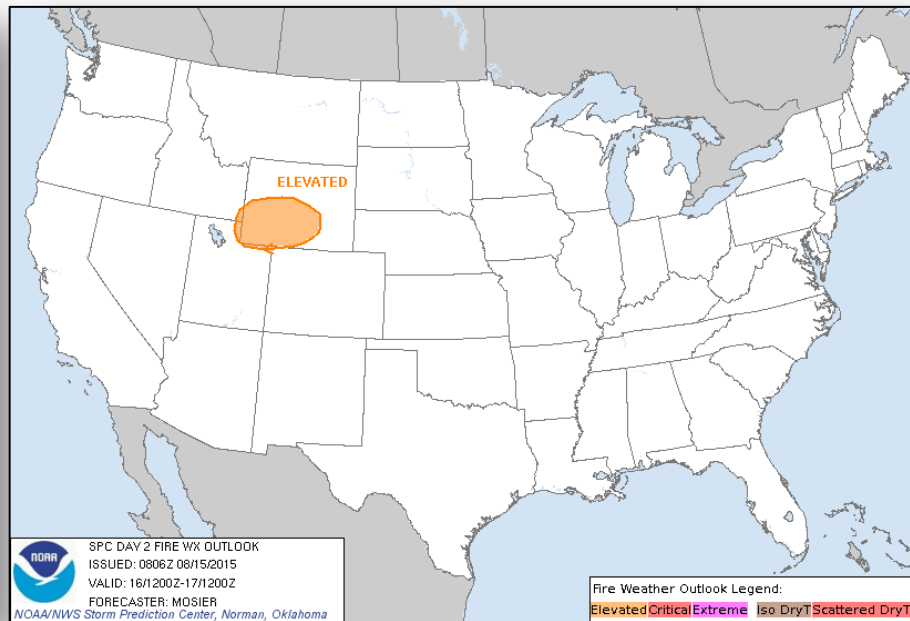
Severe Weather Outlook, Days 1 – 3



Fire Weather Outlook, Days 1 – 2

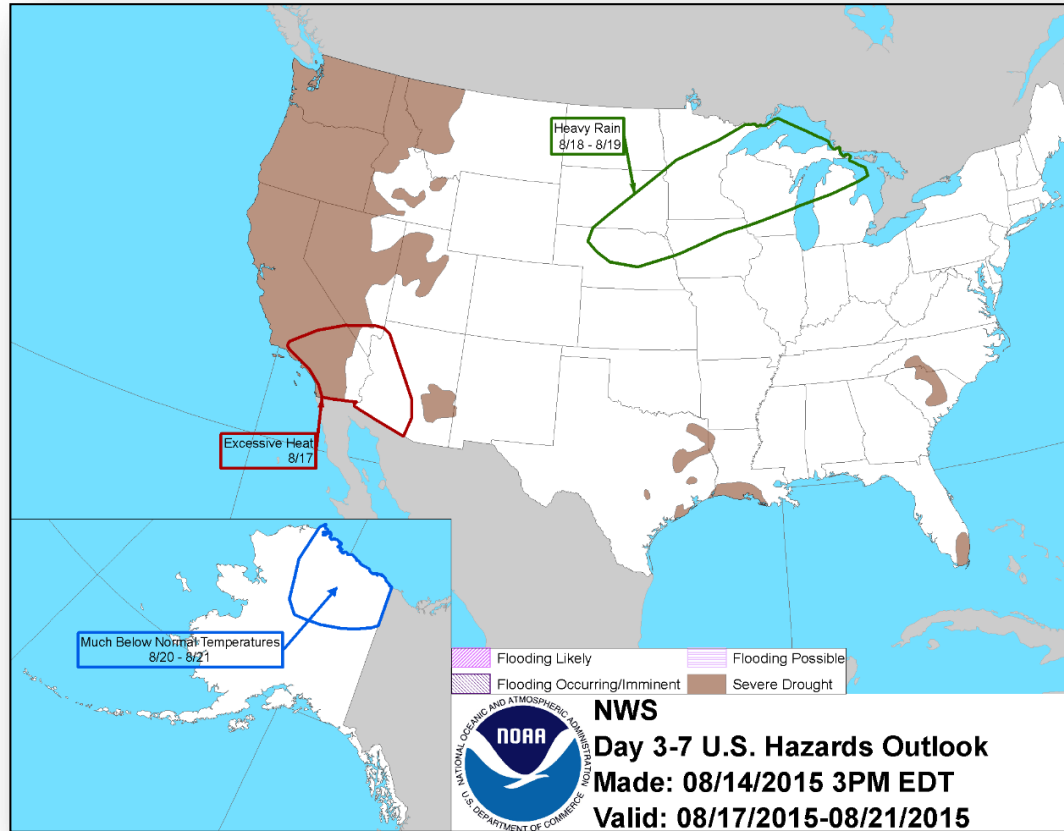


Today



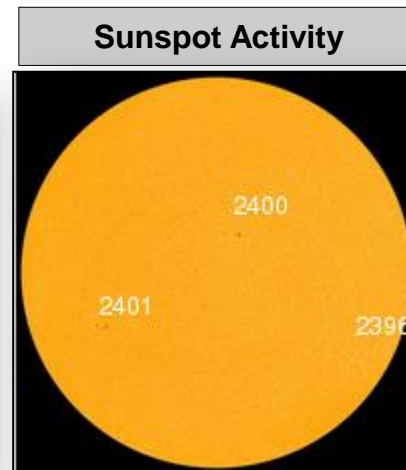
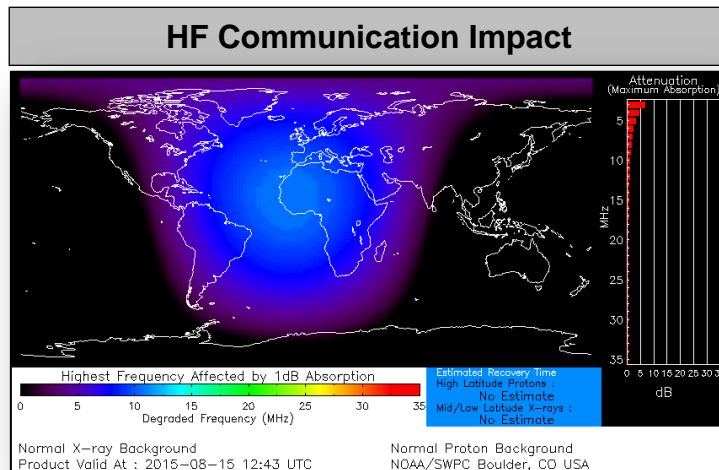
Tomorrow

Hazard Outlook, August 17 – 21



Space Weather

	Past 24 Hours	Current	Next 24 Hours
Space Weather Activity:	Strong	Minor	Strong
• Geomagnetic Storms	G3	G1	G3
• Solar Radiation Storms	None	None	None
• Radio Blackouts	None	None	None

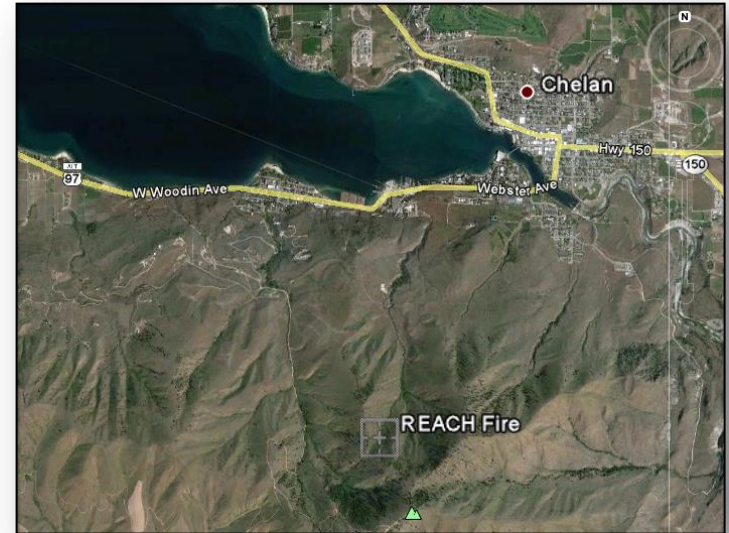


Reach Complex – WA



Fire Name (County)	Location	Acres burned	% Contained	FMAG	Evacuations	Structures Lost / Threatened	Fatalities / Injuries
Reach Complex (Chelan County)	Chelan (pop. 3,959)	2,000	0%	Approved August 14	Mandatory	Some outbuildings / 730 homes	0/0

- Reach Complex includes Chelan Butte Fire, Deer Mountain Fire & Antoine Fire in central Washington
- Threatening 730 homes (fire perimeter within 200 yards) in and around urban area of city of Chelan
- Several outbuildings and industrial/agricultural facilities actively burning, including apple packing warehouse
- Chelan High School, private businesses, city and rural power lines, sewer, and natural gas lines, city roads and bridges, county recreational sites and significant natural resources threatened
- Mandatory evacuations in effect for 730 homes; additional evacuations anticipated
- 1 shelter open with 100 occupants
- WA EOC partially activated for wildfires
- FEMA Region X remains at Normal Operations

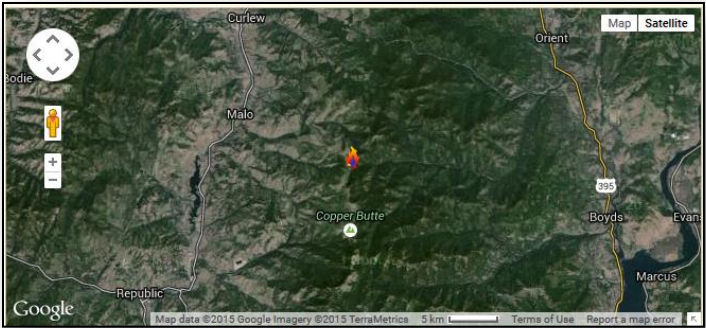


Stickpin Fire – WA



Fire Name (County)	Location	Acres burned	% Contained	FMAG	Evacuations	Structures Lost / Threatened	Fatalities / Injuries
Stickpin Fire (Ferry County)	Malo & Curlew (pop. 950)	20,000	0%	Approved August 15	Mandatory/Voluntary 520 homes	0 / 300 (200 homes)	0/0

- Began August 11, 2015, burning in Profanity Peak near communities of Malo & Curlew
- The fire perimeter is near Colville Reservation
- 800-1,000 people estimated to live in immediate vicinity of fire; 2,799 people live within four miles of rapidly expanding fire perimeter
- Fire is threatening multiple facilities, including state, county & city roads, and 25 miles of BPA transmission lines
- Mandatory evacuations in effect for 520 homes in Malo & Curlew
- 1 shelter open with unknown number of occupants
- WA EOC partially activated for wildfires
- FEMA Region X remains at Normal Operations



Canyon Creek Complex – OR



Fire Name (County)	Location	Acres burned	% Contained	FMAG	Evacuations	Structures Lost / Threatened	Fatalities / Injuries
Canyon Creek Complex (Grant County)	John Day & Canyon City (pop. 2,390)	22,000	0%	Approved August 15	600 Mandatory/Voluntary	0 / 500 homes	0/2

- Canyon Creek Complex includes Berry Creek and Mason Spring Fires, burning 7 miles north of town of Seneca
- Threatening 500 homes in and around the communities of John Day & Canyon City, infrastructure of John Day, including historic, public & government buildings, schools, waste water treatment plant, municipal water supply, electric power lines & sage grouse habitat
- Mandatory & voluntary evacuations in effect for 600 people
- OR EOC partially activated for wildfire support
- FEMA Region X at Normal Operations



FMAG Requests and Declarations



Action (since last report)			Total	FMAG No. and State	
Requests DENIED			0		
Requests APPROVED			3	Canyon Creek Complex, OR Reach Complex, WA Stickpin Fire, WA	
Approved FMAG Data					
Year	Current YTD	MTD	Monthly Average	Cumulative Acres Burned YTD	Cumulative Denied FMAGs YTD
2015	21	10	11	149,040	2
Year	Total Previous FY	++ Yearly Average		Total Acres Burned Previous Year	Total Denied FMAGs Previous Year
2014	31	37		152,648	2
* Reflects the 3-year average for current month/ ** Reflects 3-year total average					

Wildfire Summary



Fire Name (County)	FMAF #	Acres burned	% Contained Est. Containment date	Evacuations (Residents)	Structures Threatened	Structures Damaged/ Destroyed	Fatalities / Injuries
Oregon (1)							
Cornet-Windy Ridge Complex (Baker County)	FEMA-5097-FM-OR Approved Aug 13	48,862 (+20,071)	5-5%	253 (+108) Mandatory	462 (+183) (187 homes)	0/19 (6 homes)	0/0
Washington (1)							
Nine Mile Fire (Okanogan County)	FEMA-5098-FM-WA Approved Aug 14	4,673 (+1,673)	30% (+30)	Mandatory	80 homes (-580)	0/10 (1 home)	0/0
Idaho (1)							
Clear Water Complex (Lewis & Idaho counties)	FEMA-5099-FM-ID Approved Aug 14	32,381 (+15,652)	15%	400 Mandatory	1,630 (560 homes & 20 multiple residences)	0/3 (2 homes)	0/0

Disaster Requests & Declarations



Declaration Requests in Process		Requests APPROVED (since last report)	Requests DENIED (since last report)
1	Date Requested	0	0
AK – DR Wildfires	July 24, 2015		

Disaster Amendments

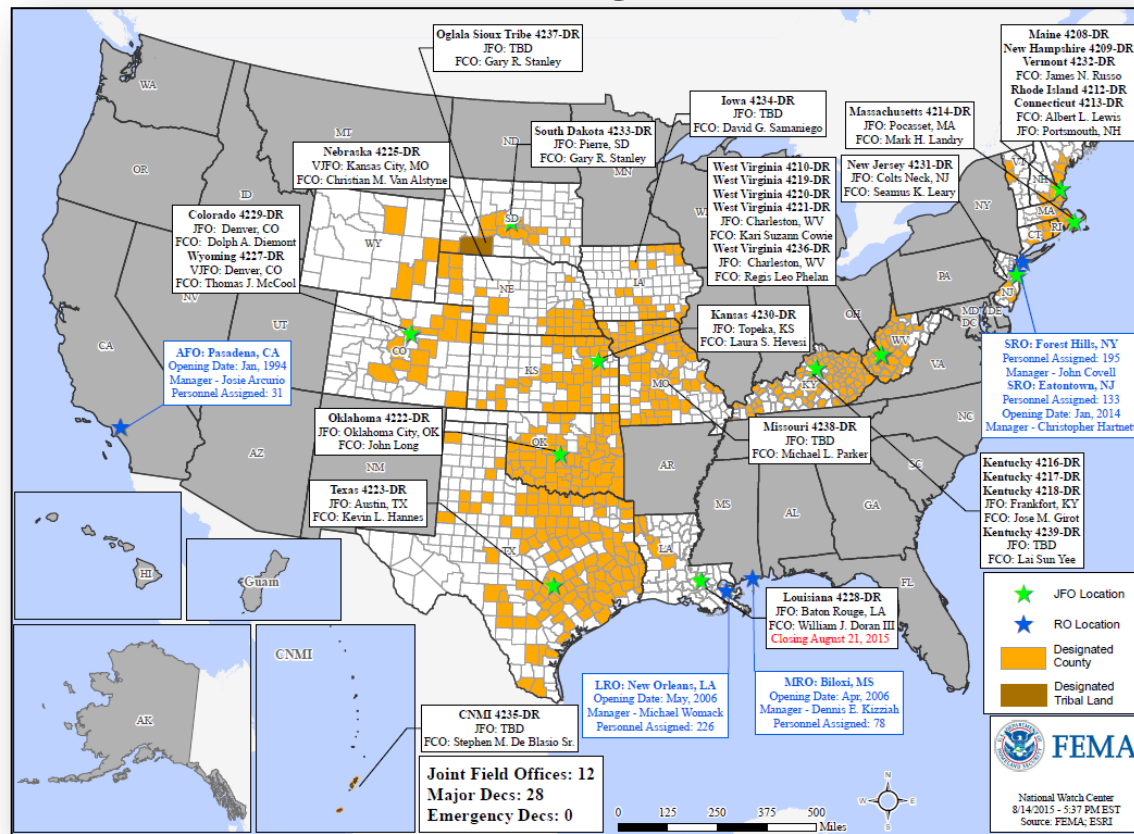


Amendment	Effective Date	Action
Amendment No. 1 FEMA-4225-DR-NE	August 14, 2015	Adds 16 counties for Public Assistance

Open Field Offices as of August 15



FEMA



Joint Preliminary Damage Assessments



Region	State / Location	Event	I/PA	Number of Counties		Start – End
				Requested	Complete	
IV	FL	Heavy Rain & Flooding July 26, 2015 & continuing	IA	5	2 (+1)	8/12-TBD
			PA	4	0	TBD
V	IL	Severe Storms, Flooding & Tornadoes June 7, 2015 & continuing	IA	7	7	8/6-8/10
			PA	23	23 (+23)	8/10- 8/14
V	IN	Severe Storms, Tornadoes, Straight-line Winds & Flooding June 7 – July 29, 2015	PA	26	0	8/18-TBD

FEMA Readiness – Deployable Teams /Assets



Deployable Teams/Assets									
Resource	Status	Total	FMC Available		Partially Available	Not Available	Detailed, Deployed, Activated	Comments	Rating Criterion
FCO		35	11	31%	0	1	23		OFDC Readiness: FCO Green Yellow Red Type 1 3+ 2 1 Type 2 4+ 3 2 Type 3 4 3 2 FDRC 3 2 1
FDRC		9	6	67%	0	0	5		
US&R		28	27	96%	0	1	0	NM-TF1 (Red) – Personnel shortages	<ul style="list-style-type: none"> • Green = Available/FMC • Yellow = Available/PMC • Red = Out-of-Service • Blue = Assigned/Deployed
National IMAT		3	3	100%	0	0	0		<ul style="list-style-type: none"> • Green: 3 avail • Yellow: 1-2 avail • Red: 0 avail (<i>Individual N-IMAT red if 50% of Section Chiefs and/or Team Leader is unavailable for deployment.</i>)
Regional IMAT		13	3	23%	0	1	10	<u>Deployed:</u> RI to NH/MA Aug 6 - TBD (training but FMC) RIV (Teams 1 & 2) deployed to KY RV to RVI supporting severe weather/flooding RVI (Team 1 & 2) to TX & personnel to OK RVII deployed to MO RVIII (Team 1) deployed to SD & CO RIX (Teams 1 & 2) deployed to CNMI RX IMAT deployed to Guam	<ul style="list-style-type: none"> • Green: 7 or more avail • Yellow: 4 - 6 teams available • Red: > 8 teams deployed/unavailable <i>R-IMAT also red if TL Ops/Log Chief is unavailable & has no qualified replacement</i>
MCOV		59	46	78%	0	8	5	5 units in TX	<ul style="list-style-type: none"> • Green = 80 – 100% avail • Yellow = 60 – 79% avail • Red = 59% or below avail • Readiness remains 95%

FEMA Readiness – National/Regional Teams



National/Regional Teams									
Resource	Status	Total	FMC Available		Partially Available	Not Available	Status	Comments	Rating Criterion
NWC		5	5	100%	0	0	Activated	Enhanced Watch (24/7)	• Green = FMC • Yellow = PMC • Red = NMC
NRCC		2	344	89%	0	44	Not Activated		
HLT		1	N/A	N/A	0	0	Activated		
DEST							Not Activated		
RRCCs		10	10	100%	0	0	Activated	Region IX RRCC Level III (will go to Level II at 12:00 pm EDT today, August 15) Region VIII RRCC at Enhanced Watch	
RWCs/MOCs		10	10	100%	0	0	Activated	Region IX at Enhanced Watch	



FEMA

FEMA's mission is to support our citizens and first responders to ensure that as a nation we work together to build, sustain, and improve our capability to prepare for, protect against, respond to, recover from, and mitigate all hazards.