

The Disaster Center is dedicated to the idea that disaster mitigation is cost effective and individuals pursuing their own interest are the greatest potential force for disaster reduction.

Please consider making a small donation to the Disaster Center



When disaster mitigation is cost effective, we are on the road to bringing disasters to an end.



FEMA

Daily Operations Briefing

Sunday, August 16, 2015

8:30 a.m. EDT

Significant Activity: August 15-16



Significant Events: Tropical Storm Goni response (FINAL); western wildfires

Tropical Activity:

- Atlantic: Disturbance 1 – Low (30%)
- Eastern Pacific: Tropical Depression Eleven-E
- Central Pacific: No tropical cyclones expected through late Monday night
- Western Pacific: Tropical Storm Goni (16W)

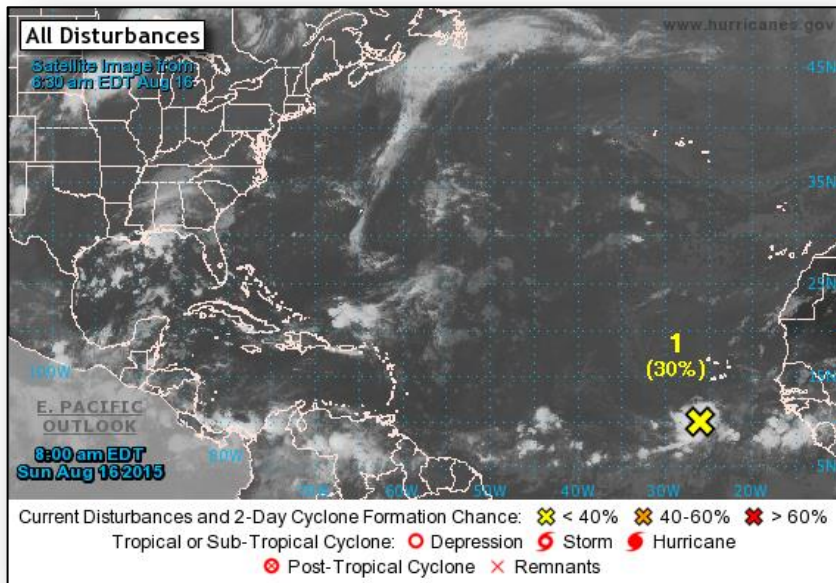
Significant Weather:

- Severe thunderstorms and flash flooding possible – Central Plains to Upper Mississippi Valley
- Rain & thunderstorms: Southwest to Great Lakes; Gulf Coast to Ohio Valley and Southeast
- Red Flag Warnings: CA; Elevated Fire Weather Area: WY
- Space Weather: Past 24 hours – moderate, G2 geomagnetic storms occurred; next 24 hours – moderate, G2 geomagnetic storms predicted

Declaration Activity:

- FMAGs approved for Municipal Fire, ID; Stevens County Complex, WA, & Okanogan Complex Fire, WA

2-Day Tropical Outlook – Atlantic



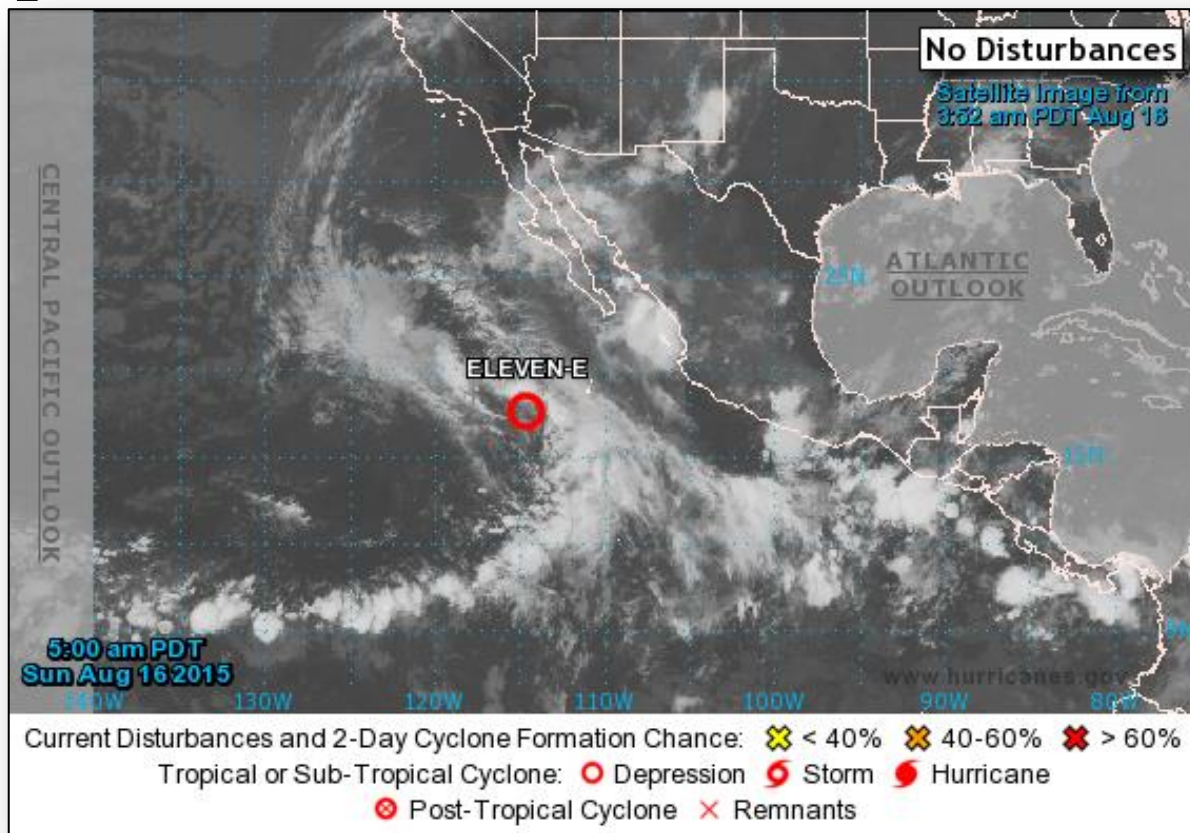
Disturbance 1: (as of 8:00 a.m. EDT)

- Located few hundred miles SSW of Cape Verde Islands
- Moving W at 15 mph
- Conditions expected to be somewhat conducive for gradual development next several days
- Formation chance through 48 hours: Low (30%)
- Formation chance through 5 days: Medium (40%)

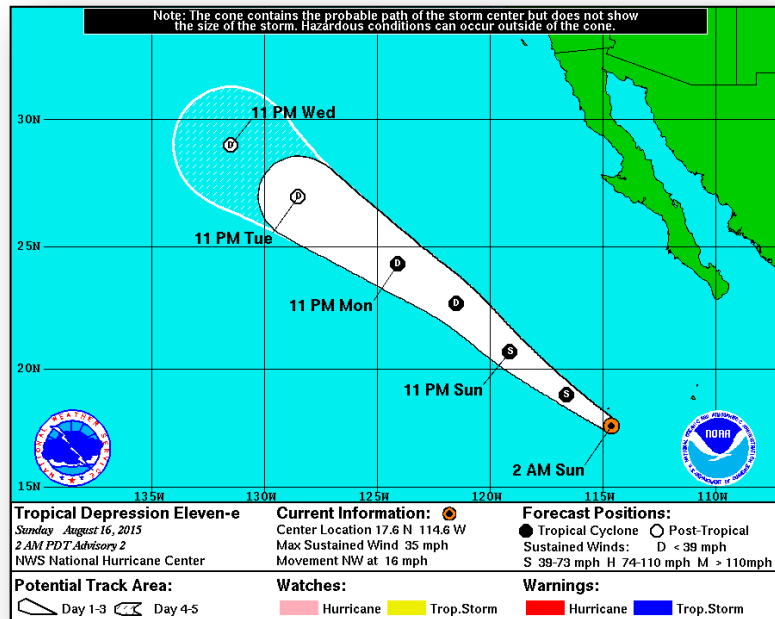
2-Day Tropical Outlook – Eastern Pacific



FEMA



Eastern Pacific – TD Eleven-E



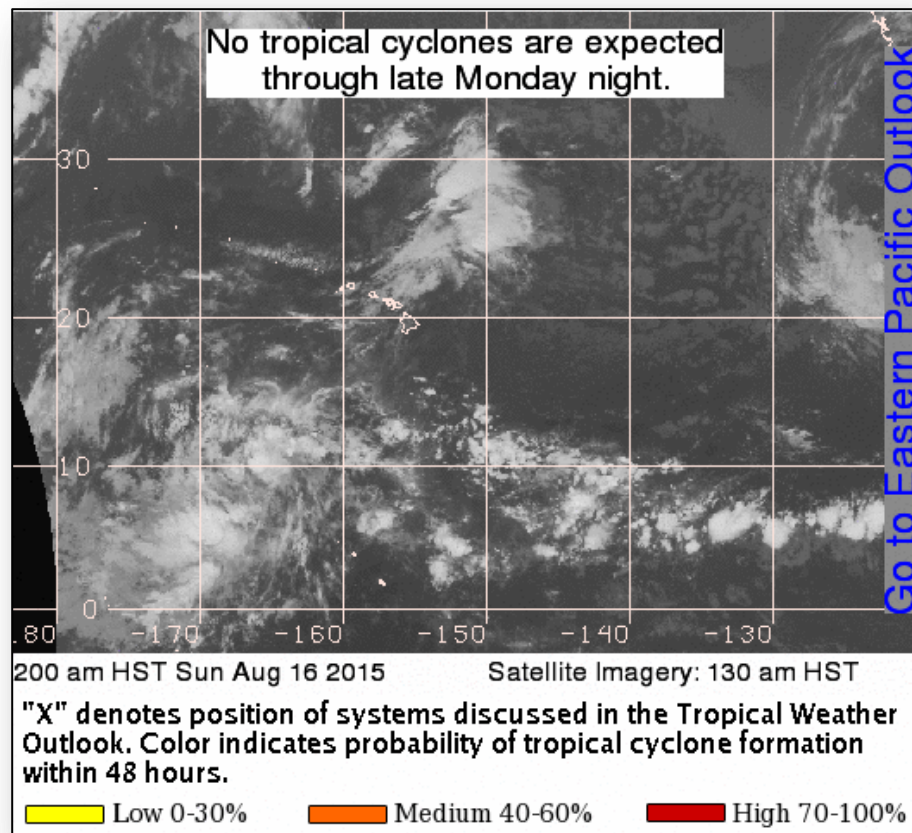
Tropical Depression Eleven-E: (Advisory 2 as of 5:00 a.m. EDT)

- Located 475 miles SW of southern tip of Baja California
- Moving NW at 16 mph
- This general motion expected next couple of days
- Maximum sustained winds 35 mph
- Some slight strengthening possible
- Could become a tropical storm later today
- No coastal watches or warnings in effect

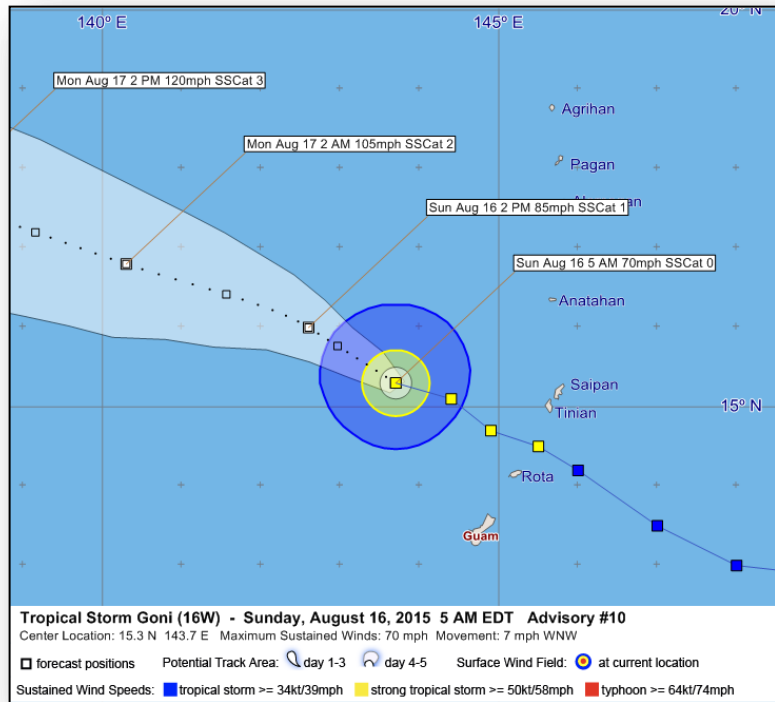
Tropical Outlook – Central Pacific



FEMA



Tropical Outlook – Western Pacific



Tropical Storm Goni (16W): (Advisory 10 as of 5:00 a.m. EDT)

- Located 135 miles west of Saipan, 145 miles NNW of Guam
- Moving WNW at 7 mph, away from the Marianas & into open ocean
- Slight increase in forward speed next couple days
- Maximum sustained winds 70 mph
- Expected to intensify, possibly becoming a typhoon late this morning
- Goni no longer a threat to U.S. territories; all watches & warnings have been cancelled

Impacts (Date/Time References in EDT):

- Passed between Rota & Tinian Saturday morning/mid-evening, bringing heavy rain & strong winds to Guam & CNMI
- As Goni continues to pull away; conditions are improving across the Mariana Islands
- Unsettled weather forecast through the upcoming week
 - Isolated/scattered showers & thunderstorms possible each day

TS Goni (16W) – Response (Final)



FEMA

Situation:

- Initial reports indicate light damage & no significant disruptions to critical systems already operating under emergency conditions as a result of Typhoon Soudelor
 - Damage on Tinian & Rota was minimal & within the capabilities of CNMI
 - Guam & CNMI ports open; airports are open
 - All shelters are closed in Guam; 16 shelters open in CNMI w/ 699 occupants
- Formal assessments of damage caused by Tropical Storm Goni are not complete

Territory Response:

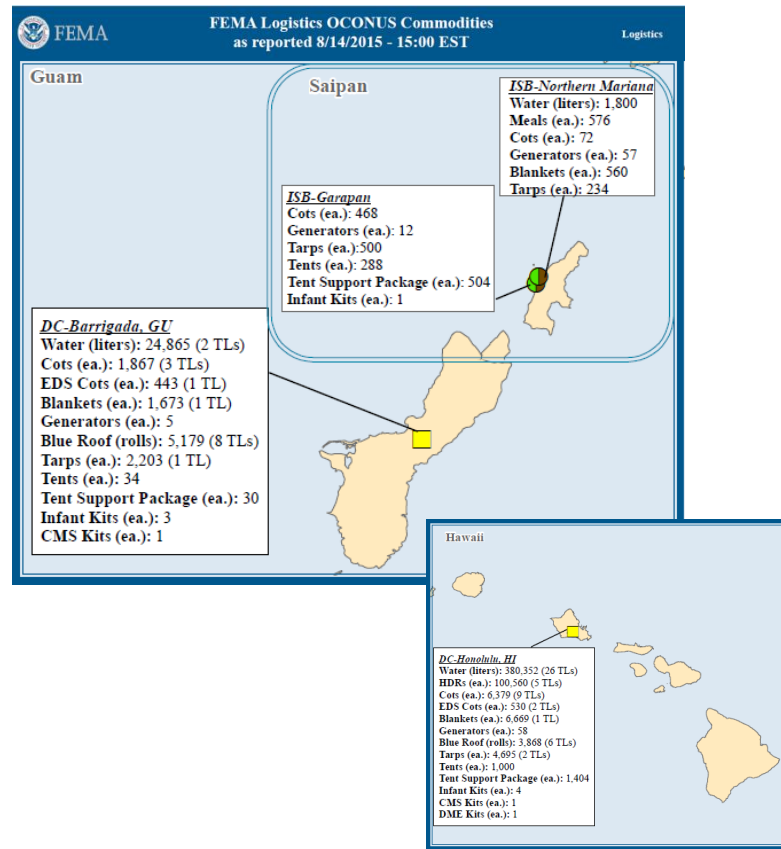
- CNMI EOC Partially Activated (24/7); Condition of Readiness 4 (normal)
- Guam EOC is deactivated, Condition of Readiness 4 (normal)
- No unmet needs identified; no requests for FEMA assistance due to TS Goni

FEMA Region IX Response:

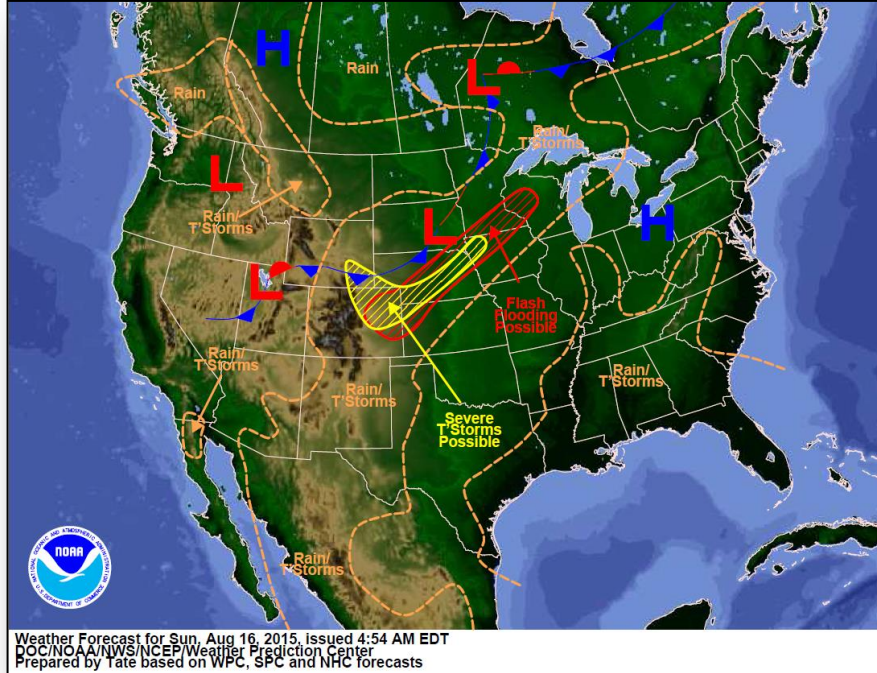
- Region IX RRCC: Level II (24/7), with select ESFs, DCO, USGC
- RWC at Enhanced Watch (24/7)
- FEMA LNO in Tinian and team at Saipan EOC in close contact with Mayor of Rota
- Unified Coordination Staff (Region IX IMATs 1 & 2) including ESFs remain deployed to CNMI with supporting staff in Guam
- Region X IMAT deployed to Guam in support of Region IX and GovGuam

FEMA HQ Response:

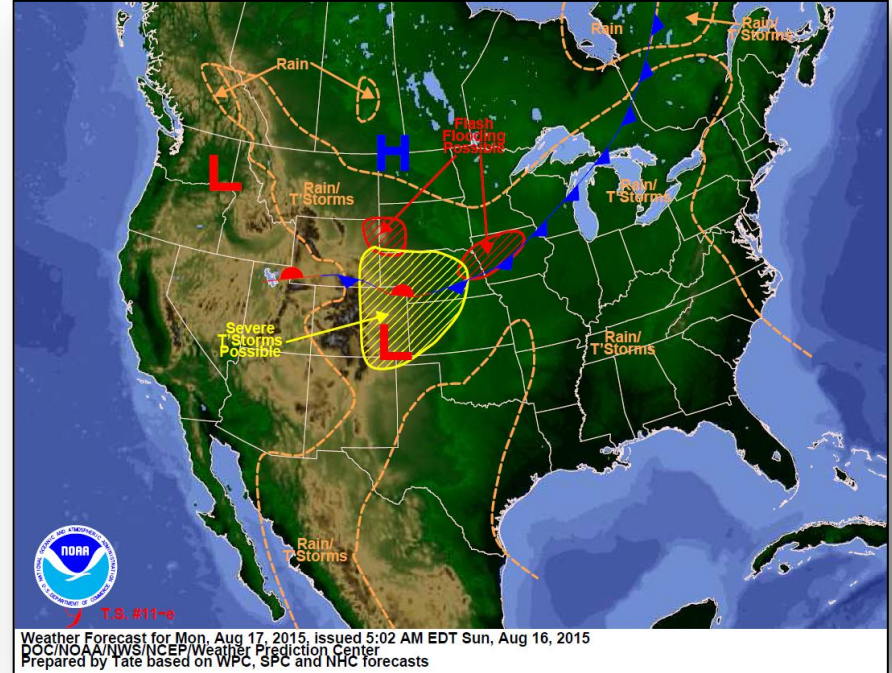
- NRCC not activated
- NWC at Enhanced Watch (24/7)
- FEMA Logistics: DC Guam is primary for resource support; DC HI assisting
 - FSA at Saipan Army Reserve Base
 - ISB/FSA Alpha Team deployed to Guam (9); DC HI (6)



National Weather Forecast



Today

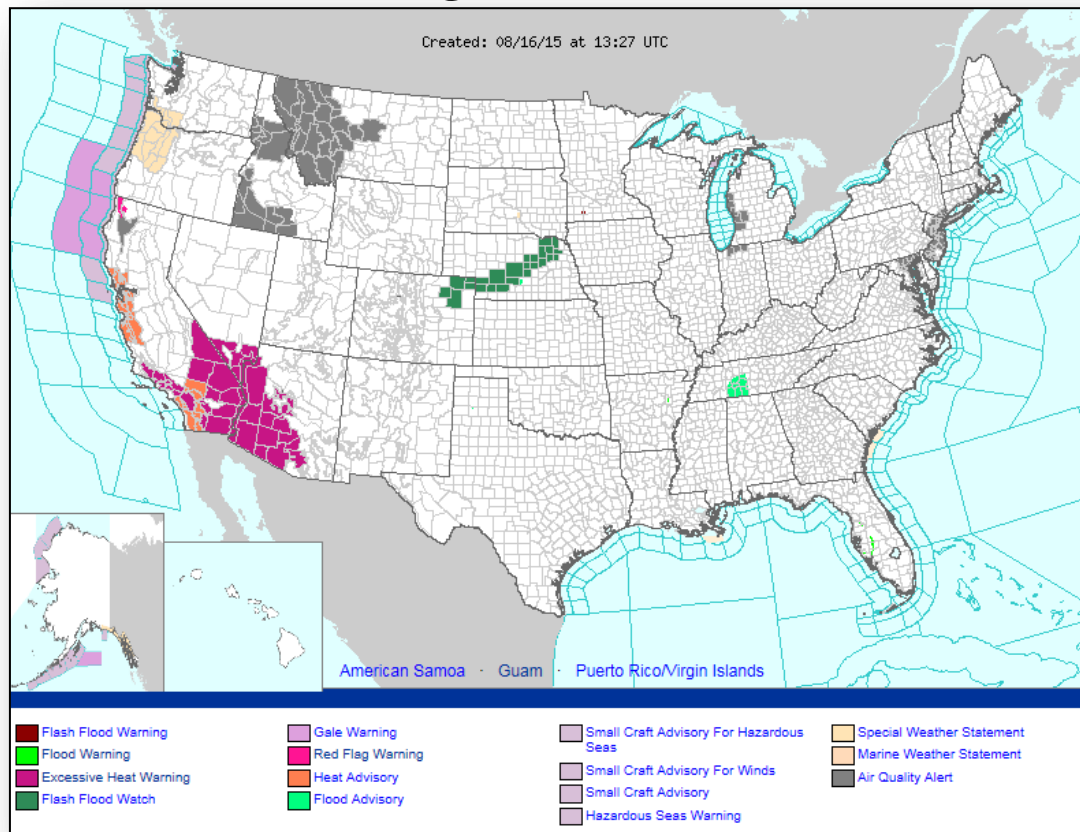


Tomorrow

Active Watches/Warnings



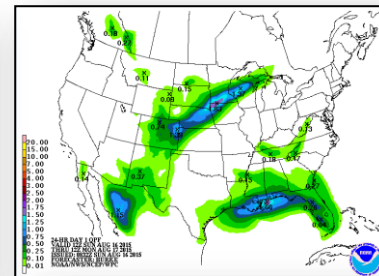
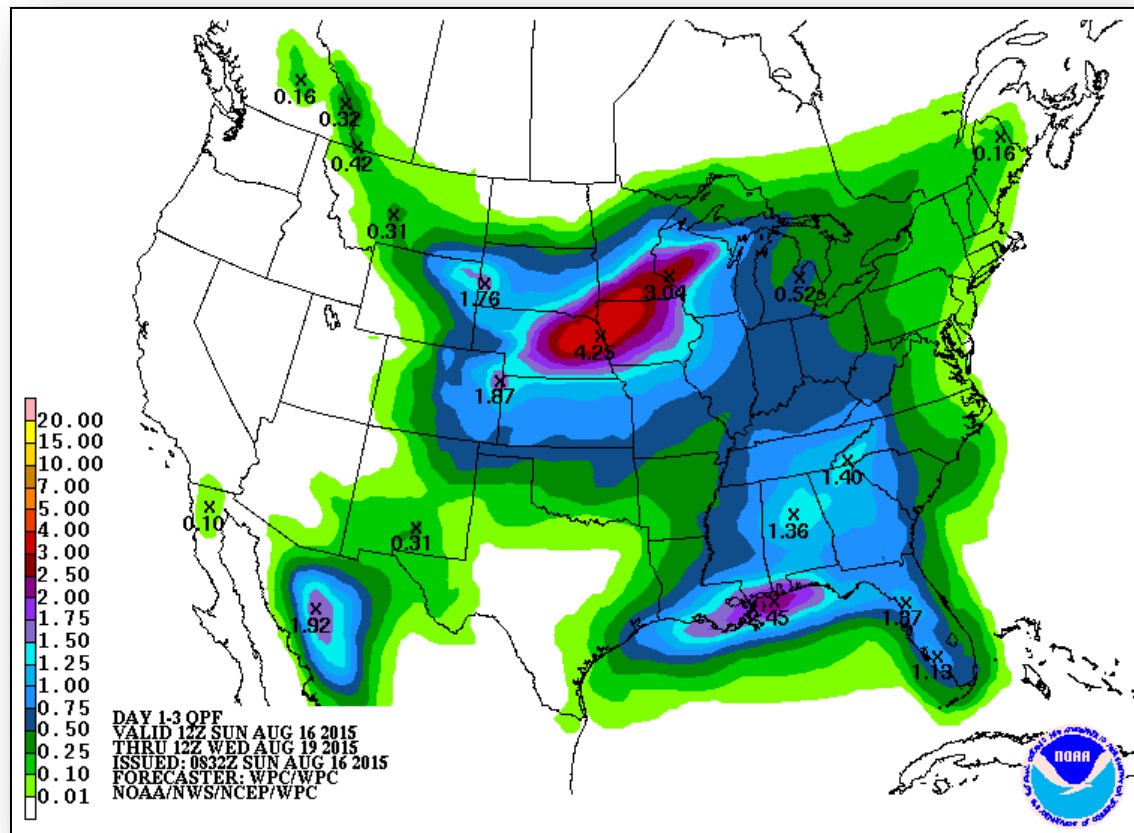
FEMA



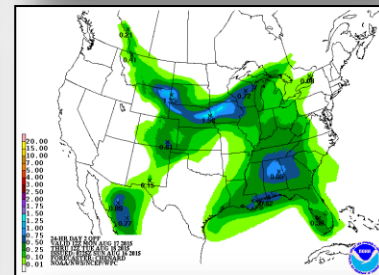
Precipitation Forecast, 1 – 3 Day



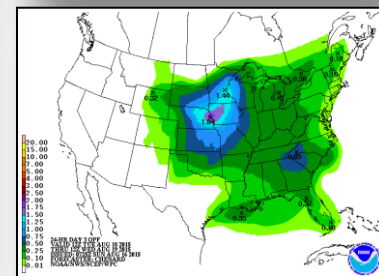
FEMA



Day 1

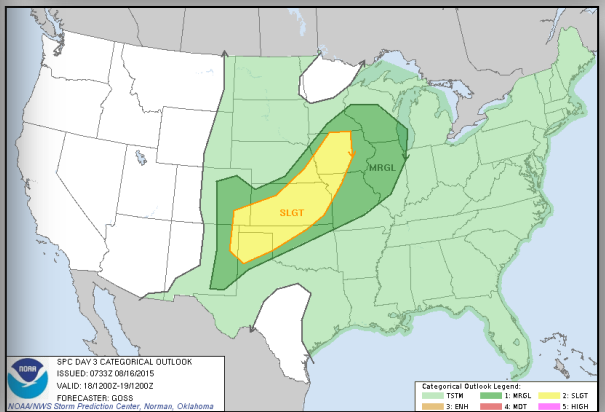
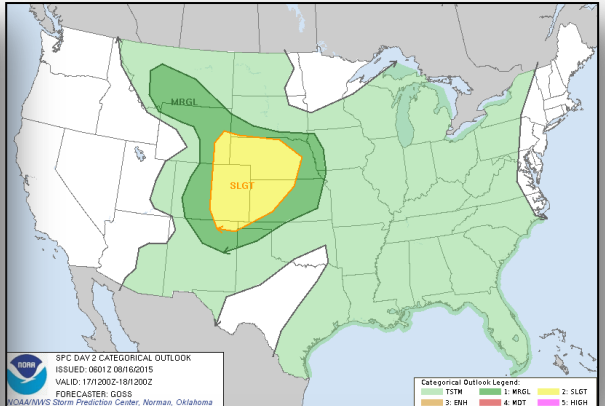
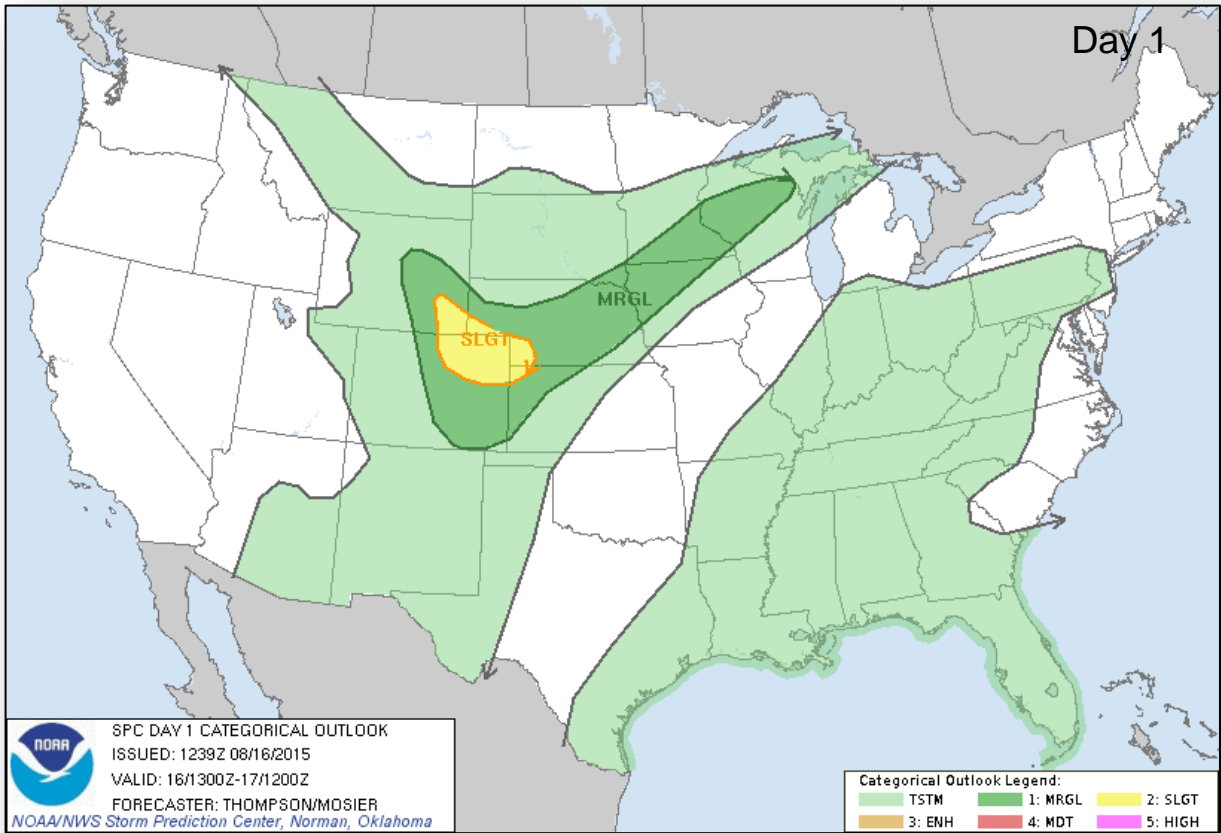


Day 2

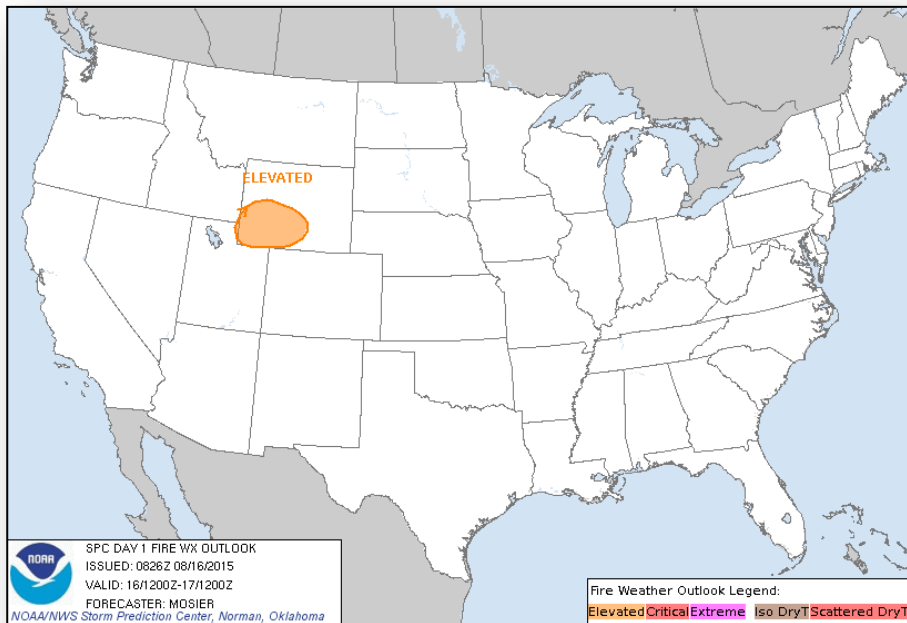


Day 3

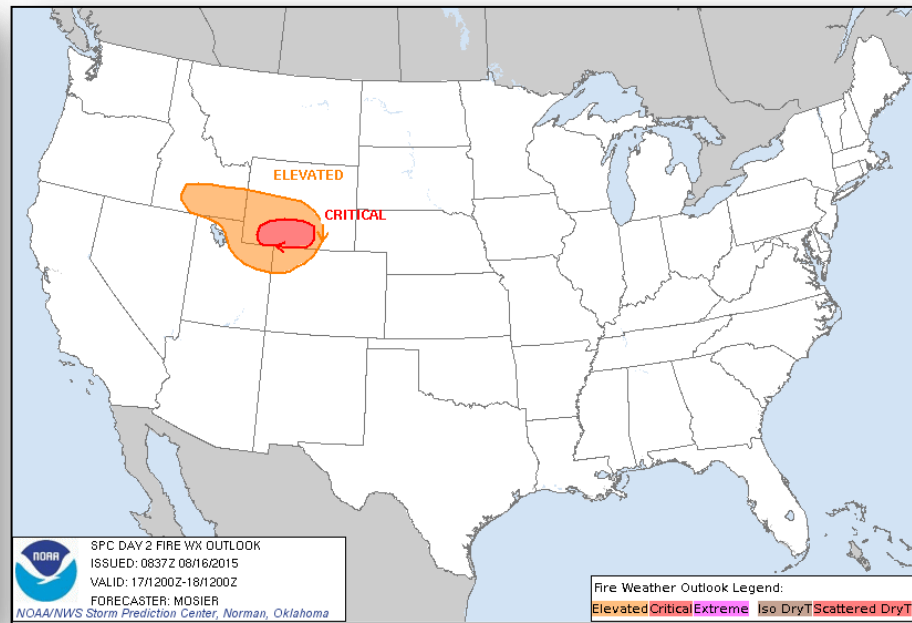
Severe Weather Outlook, Days 1 – 3



Fire Weather Outlook, Days 1 – 2

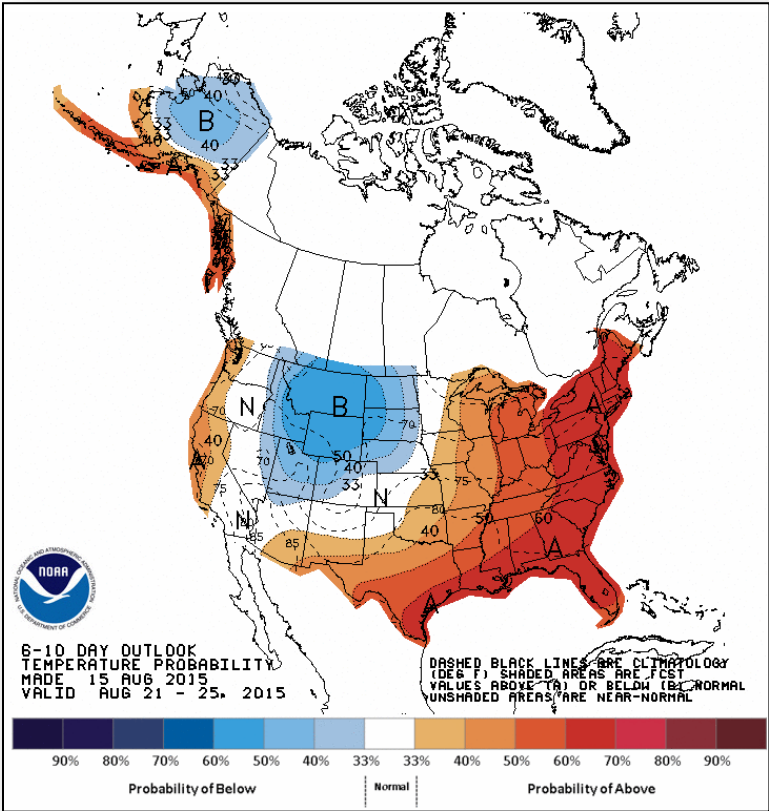


Today

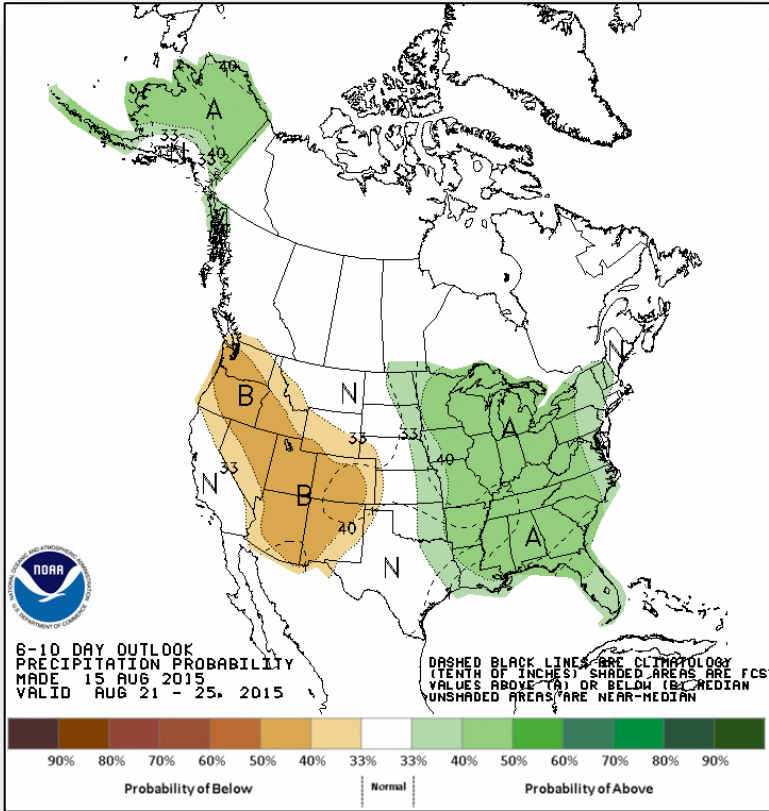


Tomorrow

6-10 Day Outlooks



Temperature Probability



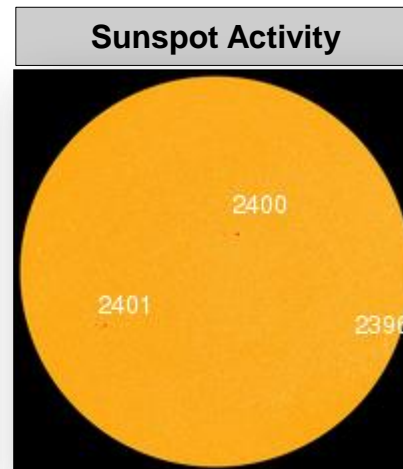
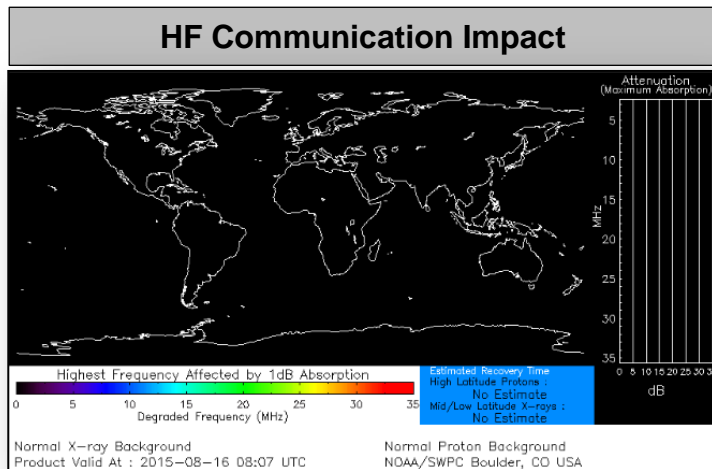
Precipitation Probability

Space Weather



FEMA

| | Past 24 Hours | Current | Next 24 Hours |
|--------------------------|---------------|---------|---------------|
| Space Weather Activity: | Moderate | None | Moderate |
| • Geomagnetic Storms | G2 | None | G2 |
| • Solar Radiation Storms | None | None | None |
| • Radio Blackouts | None | None | None |

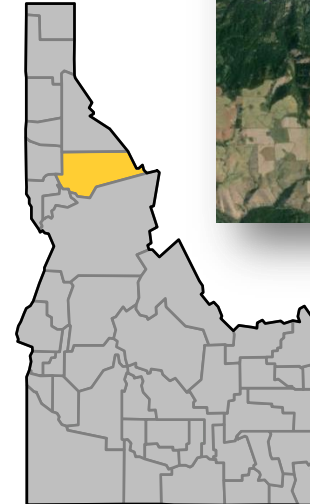


Municipal Fire – ID



| Fire Name (County) | Location | Acres burned | % Contained | FMAG | Evacuations | Structures Lost / Threatened | Fatalities / Injuries |
|-------------------------------------|-------------------------|-----------------|----------------|-----------------------|--------------------|---------------------------------|--------------------------|
| Municipal (Clearwater County) | Orofino (pop. 3,142) | 1,500 | 0% | Approved August 15 | Mandatory (200) | 2 homes / 302 (300 homes) | 0/0 |

- Burning near city of Orofino, Clearwater County
- Threatening homes, Dworshaek Dam (USACE owned/operated), a fire station, railroad, storage facility, power line & lumber mill
- Mandatory evacuations in effect for 200 homes
- ID EOC at heightened awareness for wildfires
- FEMA Region X remains at Normal Operations

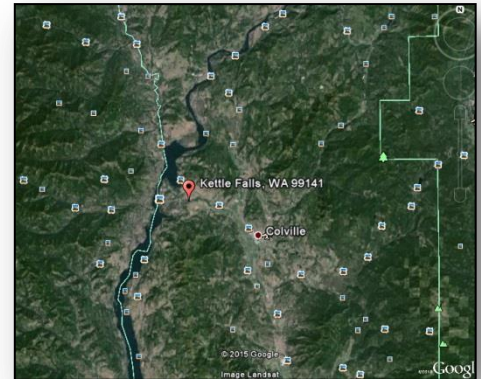
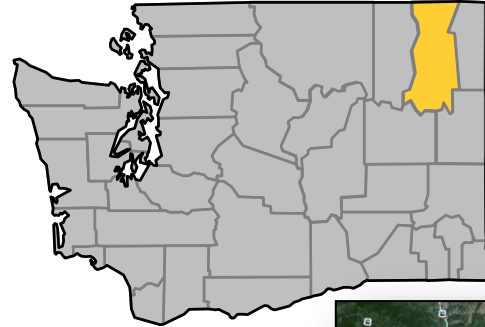


Stevens County Complex Fire – WA



| Fire Name (County) | Location | Acres burned | % Contained | FMAG | Evacuations | Structures Lost / Threatened | Fatalities / Injuries |
|---|-------------------|-----------------|----------------|-----------------------|----------------------|---------------------------------|--------------------------|
| Stevens County Complex (Stevens County) | Stevens County | Unknown | 0% | Approved August 15 | Mandatory (1,000) | 12 (4 homes)/ 1,000 homes | 1/0 |

- Complex is made up of 16 known fires in Stevens County (Stevens, Heine Road, Marble Valley, Gold Hill, Finley Gulch, Fruitland, Lime 2, China Creek, Elbow Lake, Flat Creek, Deep Lake, Squaw Creek, Paradise Peak, Bonanza Hill, Grouse Mountain & Hall Mountain)
- Number of acres burned available for only 2 out of the 16 fires (6,000 acres)
- Threatening homes, infrastructure, and natural & cultural resources across the county
- Communities immediately threatened are Kettle Falls (pop 1,595), Colville (pop 4,678), Addy (pop 300), Chewelah (pop 2,600), Evan (pop 1,500), & Marcus (pop 183)
- Mandatory evacuations in effect for 1,000 homes
- 6 ARC shelters open statewide with 54 occupants
- WA EOC partially activated for wildfires
- FEMA Region X remains at Normal Operations

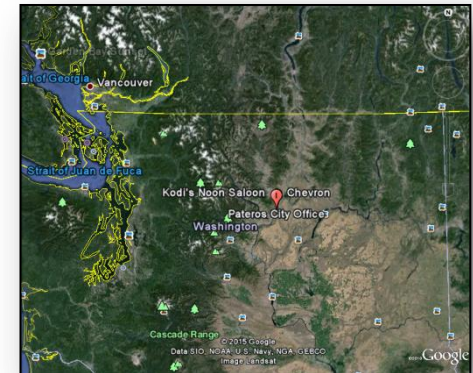


Okanogan Complex Fire – WA



| Fire Name (County) | Location | Acres burned | % Contained | FMAG | Evacuations | Structures Lost / Threatened | Fatalities / Injuries |
|---|----------|-----------------|----------------|-----------------------|-------------------|---------------------------------|--------------------------|
| Okanogan Complex (Okanogan County) | Pateros | 2,000 | 0% | Approved August 15 | Mandatory (36) | 0/12 | 0/0 |

- Complex is made up of 8 known fires burning in Okanogan County (Old Railroad, West Bonaparte, Roy, Dugout, North Star, Cooper Mountain, Dunn Mountain & Pine Creek)
- At time of FMAG request, mass evacuations were in effect; community of Pateros (pop 3,500) was at immediate risk; numerous other communities, including the city of Conconully (pop 210), also were at risk
- Threatened infrastructure includes a dam, headworks, power distribution lines & natural/cultural resources
- 6 ARC shelters open statewide with 54 occupants
- WA EOC partially activated for wildfires
- FEMA Region X remains at Normal Operations



FMAG Requests and Declarations



| Action (since last report) | | | Total | FMAG No. and State | |
|---|-------------------|-------------------|-----------------|--|----------------------------------|
| Requests DENIED | | | 0 | | |
| Requests APPROVED | | | 3 | Municipal Fire, ID Okanogan Complex, WA Stevens County Complex, WA | |
| Approved FMAG Data | | | | | |
| Year | Current YTD | MTD | Monthly Average | Cumulative Acres Burned YTD | Cumulative Denied FMAGs YTD |
| 2015 | 24 | 13 | 11 | 149,840 | 2 |
| Year | Total Previous FY | ++ Yearly Average | | Total Acres Burned Previous Year | Total Denied FMAGs Previous Year |
| 2014 | 31 | 37 | | 152,648 | 2 |
| * Reflects the 3-year average for current month/ ** Reflects 3-year total average | | | | | |

Wildfire Summary



| Fire Name (County) | FMAG # | Acres burned | % Contained Est. Containment date | Evacuations (Residents) | Structures Threatened | Structures Damaged/ Destroyed | Fatalities / Injuries |
|--|------------------------------------|-----------------|--|----------------------------|--------------------------------------|-------------------------------------|--------------------------|
| Washington (5) | | | | | | | |
| Nine Mile Fire (Okanogan County) | FEMA-5098-FM-WA Approved Aug 14 | 4,673 | 50% (+20) | Mandatory | 80 homes | 0/10 (1 home) | 0/0 |
| Reach Complex (Chelan County) | FEMA-xxxx-FM-WA Approved Aug 14 | 55,454 | 1% | Mandatory | Multiple structures/ 730 homes | 0/0 | 0/0 |
| Stickpin (Ferry County) | FEMA-xxxx-FM-WA Approved Aug 15 | 27,383 | 0% | Mandatory (50) | 2,350 (1,200 homes) | 0/0 | 0/0 |
| Stevens County Complex (Stevens County) | FEMA-xxxx-FM-WA Approved Aug 15 | Unknown | 0% | Mandatory (1,000) | 1,000 homes | 0/12 (4 homes) | 1/0 |
| Okanogan Complex (Okanogan County) | FEMA-xxxx-FM-WA Approved Aug 15 | 2,000 | 0% | Mandatory (36) | 12 homes | 0/0 | 0/0 |

Wildfire Summary



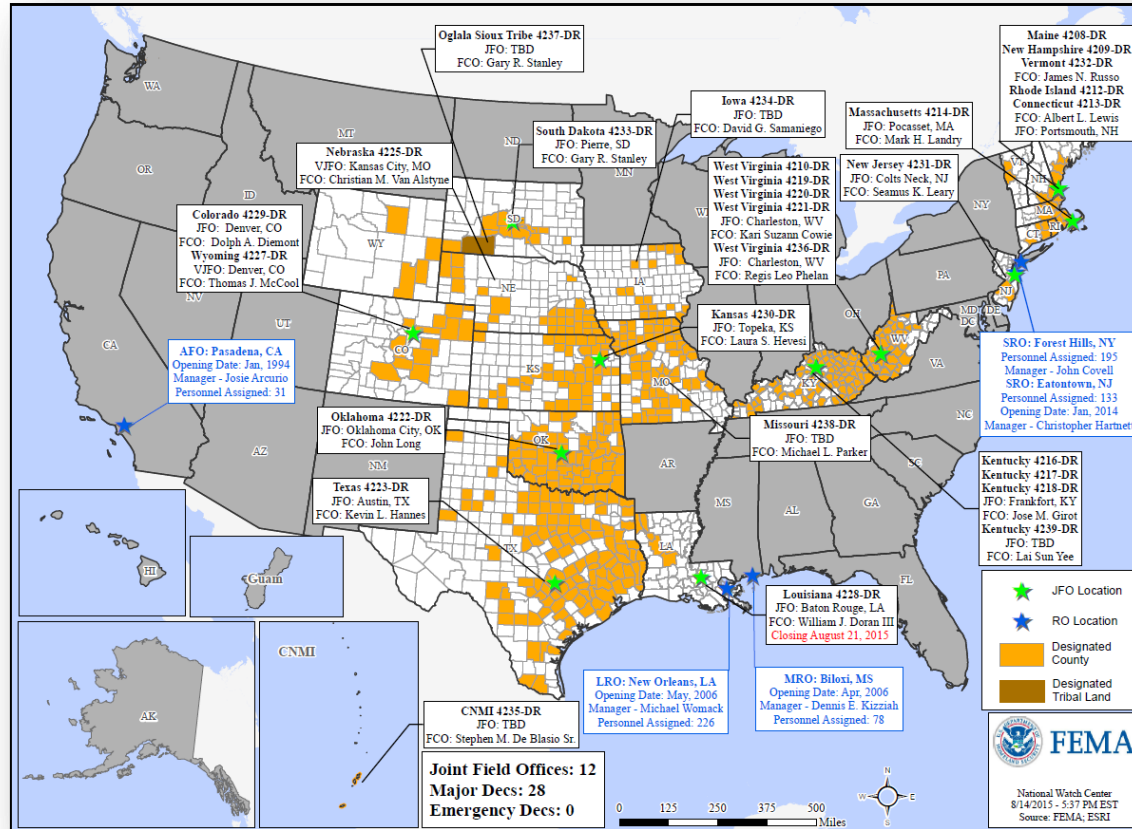
| Fire Name (County) | FMAG # | Acres burned | % Contained Est. Containment date | Evacuations (Residents) | Structures Threatened | Structures Damaged/ Destroyed | Fatalities / Injuries |
|--|------------------------------------|---------------------|--|-----------------------------------|--|-------------------------------------|--------------------------|
| Idaho (2) | | | | | | | |
| Clearwater Complex (Lewis & Idaho counties) | FEMA-5099-FM-ID Approved Aug 14 | 52,759 (+20,378) | 15% | Mandatory (400) | 1,630 (560 homes & 20 multiple residences) | 0/125 (50 homes) | 0/0 |
| Municipal Fire (Clearwater County) | FEMA-xxxx-FM-ID Approved Aug 15 | 1,500 | 0% | Mandatory (200) | 302 (300 homes) | 5 homes/ 2 homes | 0/0 |
| Oregon (2) | | | | | | | |
| Cornet-Windy Ridge Complex (Baker County) | FEMA-5097-FM-OR Approved Aug 13 | 88,433 (+39,571) | 5% | Mandatory (413) | 462 (187 homes) | 0/6 homes | 0/1 (+1) |
| Canyon Creek Complex (Grant County) | FEMA-xxxx-FM-OR Approved Aug 15 | 34,100 | 0% | Mandatory & Voluntary (300) | 500 (all homes) | 0/26 homes | 0/2 |

Disaster Requests & Declarations



| Declaration Requests in Process | | Requests APPROVED (since last report) | Requests DENIED (since last report) |
|---------------------------------|----------------|--|--|
| 1 | Date Requested | 0 | 0 |
| AK – DR Wildfires | July 24, 2015 | | |

Open Field Offices as of August 16



Joint Preliminary Damage Assessments



| Region | State / Location | Event | I/PA | Number of Counties | | Start – End |
|--------|------------------|--|------|--------------------|----------|-------------|
| | | | | Requested | Complete | |
| IV | FL | Heavy Rain & Flooding July 26, 2015 & continuing | IA | 5 | 2 | 8/12-TBD |
| | | | PA | 4 | 0 | TBD |
| V | IL | Severe Storms, Flooding & Tornadoes June 7, 2015 & continuing | IA | 7 | 7 | 8/6-8/10 |
| | | | PA | 23 | 23 | 8/10- 8/14 |
| V | IN | Severe Storms, Tornadoes, Straight-line Winds & Flooding June 7 – July 29, 2015 | PA | 26 | 0 | 8/18-TBD |

FEMA Readiness – Deployable Teams /Assets



| Deployable Teams/Assets | | | | | | | | | |
|-------------------------|--------|-------|---------------|------|---------------------|---------------|-------------------------------|--|--|
| Resource | Status | Total | FMC Available | | Partially Available | Not Available | Detailed, Deployed, Activated | Comments | Rating Criterion |
| FCO | | 35 | 11 | 31% | 0 | 1 | 23 | | OFDC Readiness: FCO Green Yellow Red Type 1 3+ 2 1 Type 2 4+ 3 2 Type 3 4 3 2 FDRC 3 2 1 |
| FDRC | | 9 | 6 | 67% | 0 | 0 | 5 | | |
| US&R | | 28 | 27 | 96% | 0 | 1 | 0 | NM-TF1 (Red) – Personnel shortages | <ul style="list-style-type: none"> • Green = Available/FMC • Yellow = Available/PMC • Red = Out-of-Service • Blue = Assigned/Deployed |
| National IMAT | | 3 | 3 | 100% | 0 | 0 | 0 | | <ul style="list-style-type: none"> • Green: 3 avail • Yellow: 1-2 avail • Red: 0 avail (<i>Individual N-IMAT red if 50% of Section Chiefs and/or Team Leader is unavailable for deployment.</i>) |
| Regional IMAT | | 13 | 4 | 31% | 0 | 0 | 9 | <u>Deployed:</u> RI to NH/MA Aug 6 - TBD (training but FMC) RIV (Team 1) deployed to KY RV to RVI supporting severe weather/flooding RVI (Team 1 & 2) to TX & personnel to OK RVII deployed to MO RVIII (Team 1) deployed to SD & CO RIX (Teams 1 & 2) deployed to CNMI RX IMAT deployed to Guam | <ul style="list-style-type: none"> • Green: 7 or more avail • Yellow: 4 - 6 teams available • Red: > 8 teams deployed/unavailable <i>R-IMAT also red if TL Ops/Log Chief is unavailable & has no qualified replacement</i> |
| MCOV | | 59 | 46 | 78% | 0 | 8 | 5 | 5 units in TX | <ul style="list-style-type: none"> • Green = 80 – 100% avail • Yellow = 60 – 79% avail • Red = 59% or below avail • Readiness remains 95% |

FEMA Readiness – National/Regional Teams



| National/Regional Teams | | | | | | | | | |
|-------------------------|--------|-------|---------------|------|---------------------|---------------|---------------|--|---|
| Resource | Status | Total | FMC Available | | Partially Available | Not Available | Status | Comments | Rating Criterion |
| NWC | | 5 | 5 | 100% | 0 | 0 | Activated | Enhanced Watch (24/7) | <div>• Green = FMC</div> <div>• Yellow = PMC</div> <div>• Red = NMC</div> |
| NRCC | | 2 | 344 | 89% | 0 | 44 | Not Activated | | |
| HLT | | 1 | N/A | N/A | 0 | 0 | Activated | | |
| DEST | | | | | | | Not Activated | | |
| RRCCs | | 10 | 10 | 100% | 0 | 0 | Activated | Region IX RRCC at Level II Region VIII RRCC at Enhanced Watch | |
| RWCs/MOCs | | 10 | 10 | 100% | 0 | 0 | Activated | Region IX at Enhanced Watch | |



FEMA

FEMA's mission is to support our citizens and first responders to ensure that as a nation we work together to build, sustain, and improve our capability to prepare for, protect against, respond to, recover from, and mitigate all hazards.