

The Disaster Center is dedicated to the idea that disaster mitigation is cost effective and individuals pursuing their own interest are the greatest potential force for disaster reduction.

Please consider making a small donation to the Disaster Center



When disaster mitigation is cost effective, we are on the road to bringing disasters to an end.



FEMA

Daily Operations Briefing

Monday, August 17, 2015

8:30 a.m. EDT

Significant Activity: August 15-17



Significant Events: Western wildfires

Tropical Activity:

- Atlantic: Disturbance 1 – Medium (50%)
- Eastern Pacific: Tropical Depression Eleven-E
- Central Pacific: No tropical cyclones expected through Tuesday evening
- Western Pacific: Typhoon Goni (16W) - FINAL

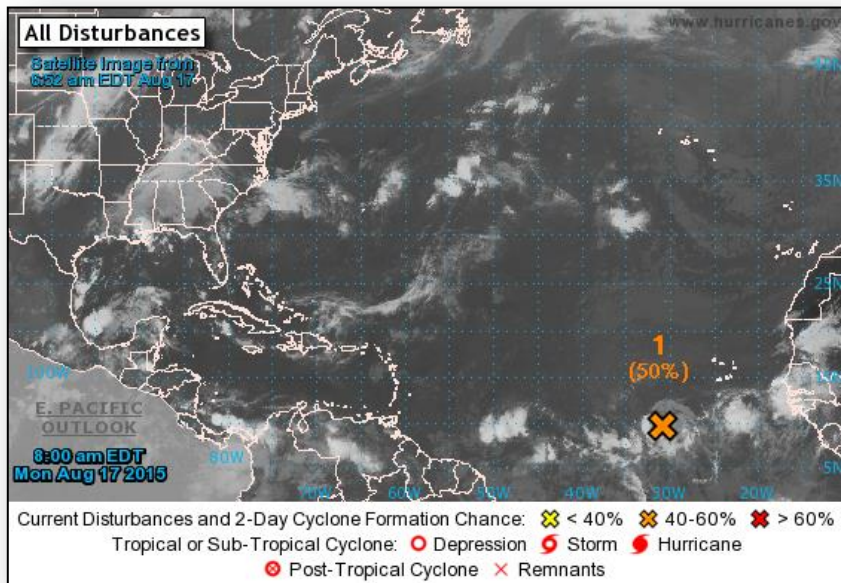
Significant Weather:

- Severe thunderstorms & flash flooding possible – Central Plains to Central Mississippi Valley
- Rain & thunderstorms: Southwest to Northern Plains & Gulf Coast to Ohio Valley & Southeast
- Red Flag Warnings: CA, ID & WY; Elevated Fire Weather Area: WY
- Space Weather: Past 24 hours – moderate, G2 geomagnetic storms occurred; next 24 hours – minor, G1 geomagnetic storms predicted

Declaration Activity:

- Amendment No. 1 to FEMA-4225-DR-NE
- FMAGs approved for: WA (4) Reach Complex, Stickpin, Stevens County Complex & Okanogan Complex; OR (1) Canyon Creek Complex Fire; & ID (1) Municipal Fire, ID

2-Day Tropical Outlook – Atlantic



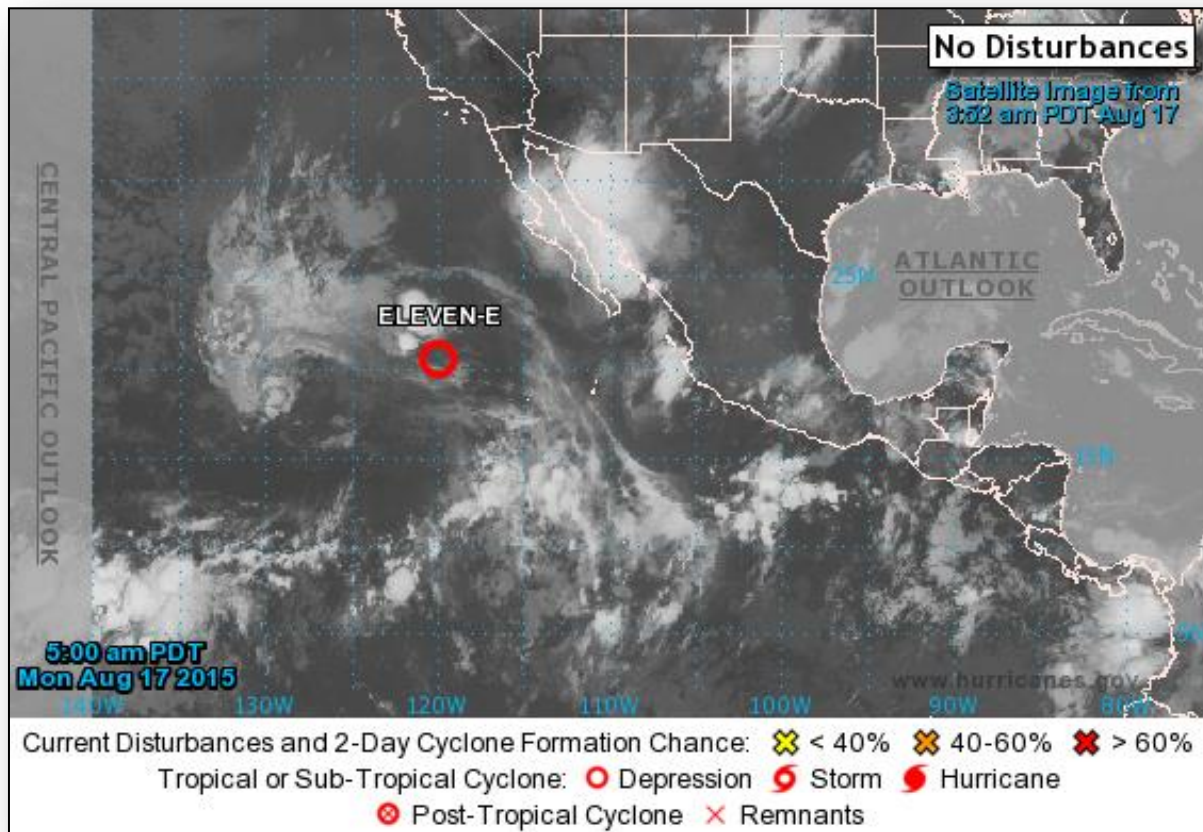
Disturbance 1: (as of 8:00 a.m. EDT)

- Shower activity associated with an area of low pressure located several hundred miles SW of Cape Verde Islands
- Moving W or WNW at 15 mph
- Conditions appear conducive for further development
- Tropical depression will likely form by midweek
- Formation chance through 48 hours: Medium (50%)
- Formation chance through 5 days: High (70%)

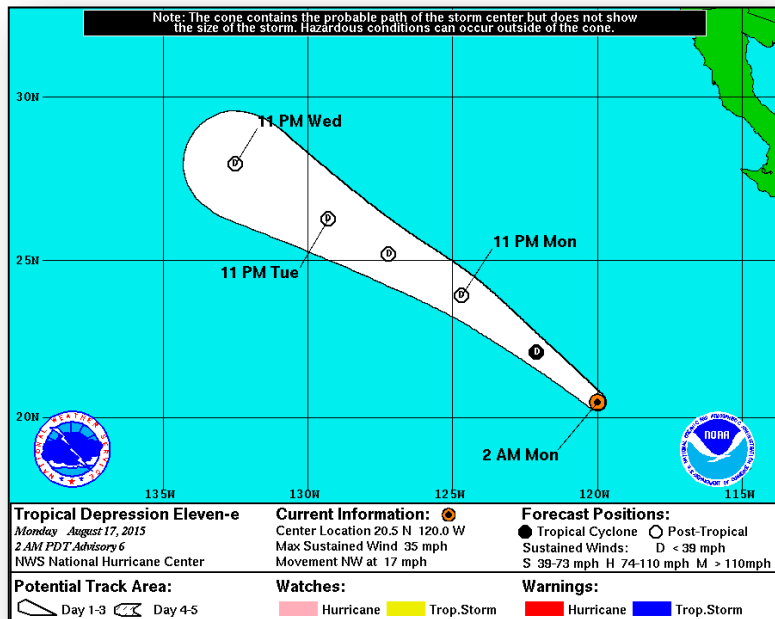
2-Day Tropical Outlook – Eastern Pacific



FEMA



Eastern Pacific – TD Eleven-E



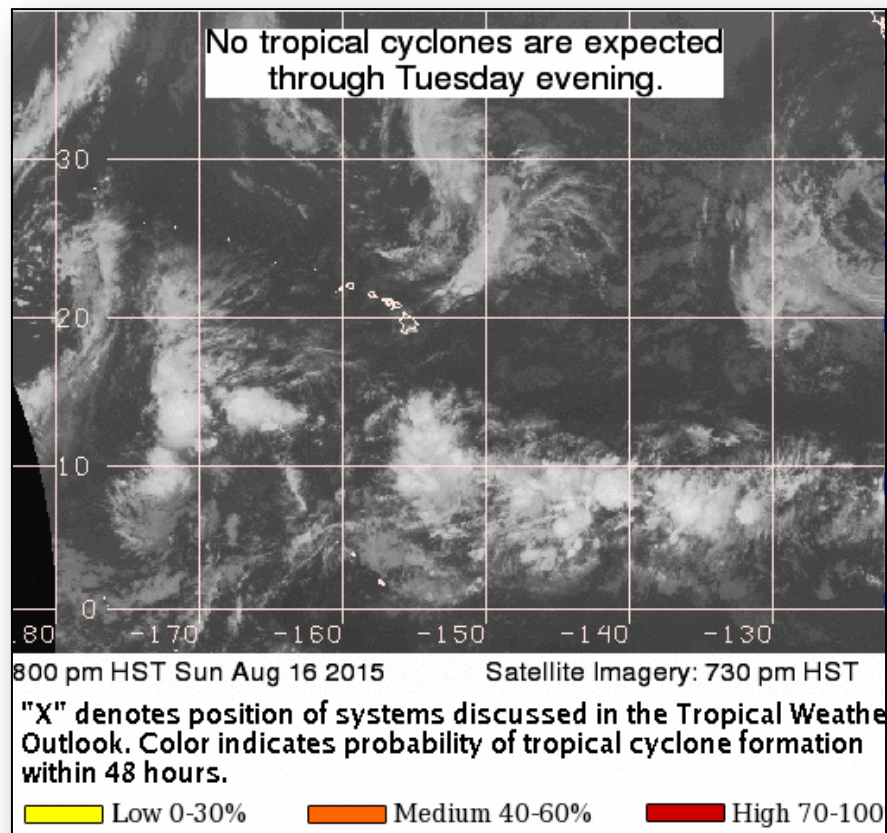
Tropical Depression Eleven-E: (Advisory 6 as of 5:00 a.m. EDT)

- Located 670 miles WSW of southern tip of Baja California
- Moving NW at 17 mph
- A WNW to NW motion expected during the next couple of days
- Maximum sustained winds 35 mph
- Gradual weakening expected
- Forecast to become a remnant low within a day
- No coastal watches or warnings in effect

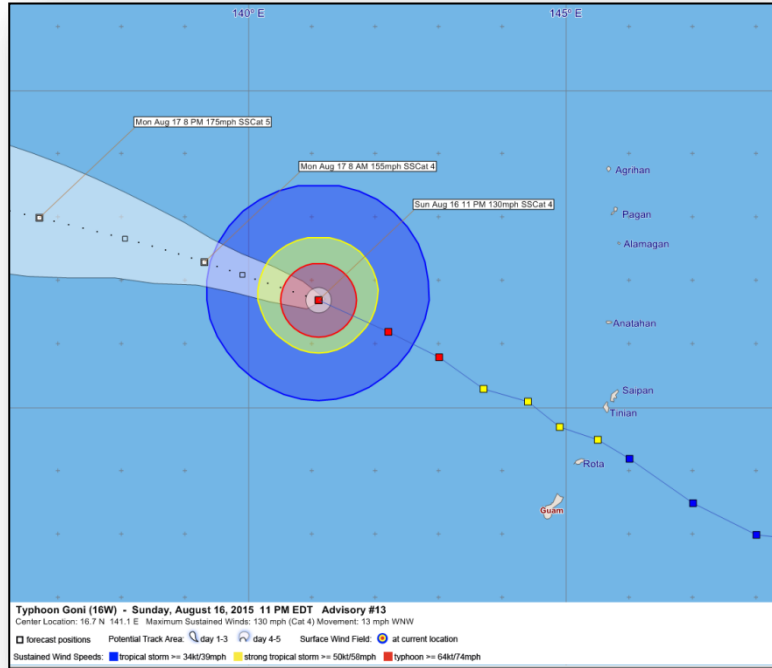
Tropical Outlook – Central Pacific



FEMA



Tropical Outlook – Western Pacific (FINAL)



Typhoon Goni (16W): (Advisory 14 as of 5:00 a.m. EDT)

- Located 420 miles WNW of Saipan, 420 miles NW of Guam
- Moving WNW at 15 mph, away from the Marianas
- Expected to turn west with little change in forward speed Tuesday
- Maximum sustained winds 130 mph
- Forecast to intensify further today, possibly becoming a super typhoon by this evening
- Goni no longer a threat to U.S. territories; all watches & warnings have been cancelled

Impacts (Date/Time References in EDT):

- Passed between Rota & Tinian Saturday morning/mid-evening, bringing heavy rain & strong winds to Guam & CNMI
- Initial reports indicate light damage, no significant disruptions to critical systems already operating under emergency conditions due to Typhoon Soudelor
- Unsettled weather forecast through the upcoming week
 - Isolated/scattered showers & thunderstorms possible each day

Wildfire Summary



Fire Name (County)	FMAG #	Acres burned	% Contained Est. Containment date	Evacuations (Residents)	Structures Threatened	Structures Damaged/ Destroyed	Fatalities / Injuries
Washington (5)							
Nine Mile Fire (Okanogan County)	FEMA-5098-FM-WA Approved Aug 14	4,673	50%	Mandatory	80 homes	0/10 (1 home)	0/0
Reach Complex [Antoine Creek Fire added] (Chelan County)	FEMA-5100-FM-WA Approved Aug 14	56,500	0%	Mandatory	2,000 homes, 850 multiple residences	0/21 homes	0/0
Stickpin (Ferry County)	FEMA-5101-FM-WA Approved Aug 15	35,530	0%	Mandatory (50)	3,550 (2,400 homes)	0/0	0/0
Stevens County Complex (Stevens County)	FEMA-5103-FM-WA Approved Aug 15	Unknown	0%	Mandatory (1,000)	1,000 homes	0/12 (4 homes)	1/0
Okanogan Complex (Okanogan County)	FEMA-5104-FM-WA Approved Aug 14	2,805	0%	Mandatory	20 homes	0/0	0/0

Wildfire Summary



Fire Name (County)	FMAG #	Acres burned	% Contained Est. Containment date	Evacuations (Residents)	Structures Threatened	Structures Damaged/ Destroyed	Fatalities / Injuries
Idaho (2)							
Clearwater Complex [Fisher Fire removed] (Lewis & Idaho counties)	FEMA-5099-FM-ID Approved Aug 14	43,240 (-9,519)	15%	Mandatory (400)	1,630 (560 homes & 20 multiple residences)	0/107 (32 homes)	0/0
Municipal Fire (Clearwater County)	FEMA-5105-FM-ID Approved Aug 15	1,700	15%	Mandatory (200)	302 (300 homes)	5 homes/ 2 homes	0/0
Oregon (2)							
Canyon Creek Complex (Grant County)	FEMA-5102-FM-OR Approved Aug 15	37,119	0%	Mandatory & Voluntary (300)	500 (all homes)	100 homes/ 26 homes	0/2
Cornet-Windy Ridge Complex (Baker County)	FEMA-5097-FM-OR Approved Aug 13	96,762 (+8,329)	30% (+25)	Mandatory (413)	462 (187 homes)	0/25 (4 homes)	0/1

FMAG Requests and Declarations



Action (since last report)			Total	FMAG No. and State	
Requests DENIED			0		
Requests APPROVED			6	Canyon Creek Complex, OR; Reach Complex, WA; Stickpin Fire, WA; Municipal Fire, ID; Okanogan Complex, WA; Stevens County Complex, WA	
Approved FMAG Data					
Year	Current YTD	MTD	Monthly Average	Cumulative Acres Burned YTD	Cumulative Denied FMAGs YTD
2015	24	13	11	149,840	2
Year	Total Previous FY	++ Yearly Average		Total Acres Burned Previous Year	Total Denied FMAGs Previous Year
2014	31	37		152,648	2
* Reflects the 3-year average for current month/ ** Reflects 3-year total average					

Disaster Requests & Declarations



Declaration Requests in Process		Requests APPROVED (since last report)	Requests DENIED (since last report)
1	Date Requested	0	0
AK – DR Wildfires	July 24, 2015		

Disaster Amendments

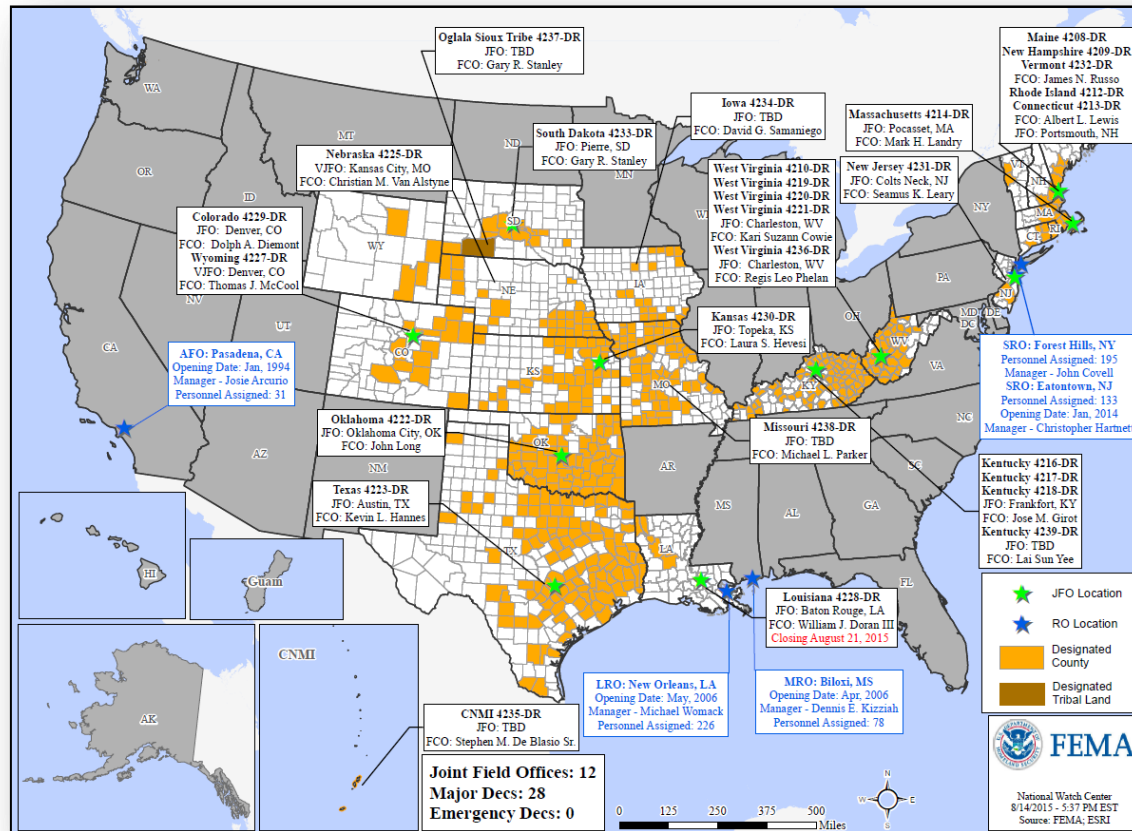


Amendment	Effective Date	Action
Amendment No. 1 FEMA-4225-DR-NE	August 14, 2015	Adds 16 counties for Public Assistance

Open Field Offices as of August 17



FEMA

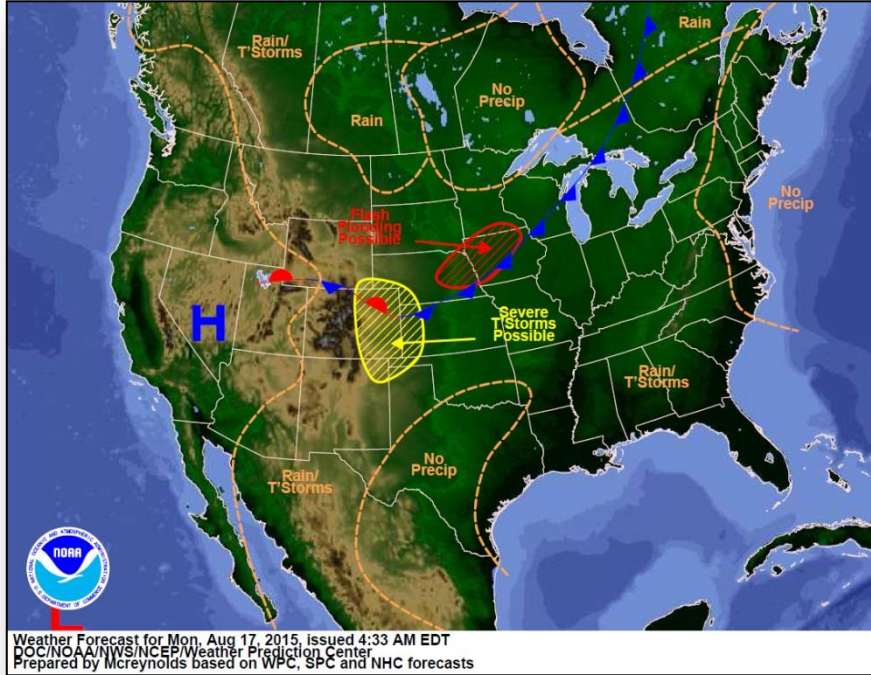


Joint Preliminary Damage Assessments

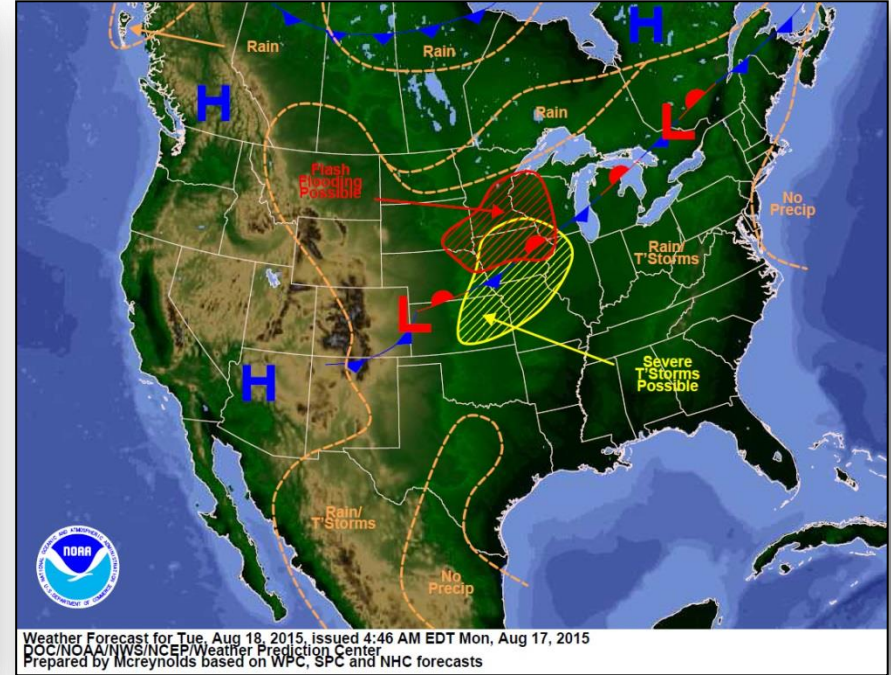


Region	State / Location	Event	I/PA	Number of Counties		Start – End
				Requested	Complete	
IV	FL	Heavy Rain & Flooding July 26, 2015 & continuing	IA	5	3 (+2)	8/12-TBD
			PA	4	0	TBD
V	IL	Severe Storms, Flooding & Tornadoes June 7, 2015 & continuing	IA	7	7	8/6-8/10
			PA	23	23	8/10- 8/14
V	IN	Severe Storms, Tornadoes, Straight-line Winds & Flooding June 7 – July 29, 2015	PA	26	0	8/18-TBD

National Weather Forecast



Today

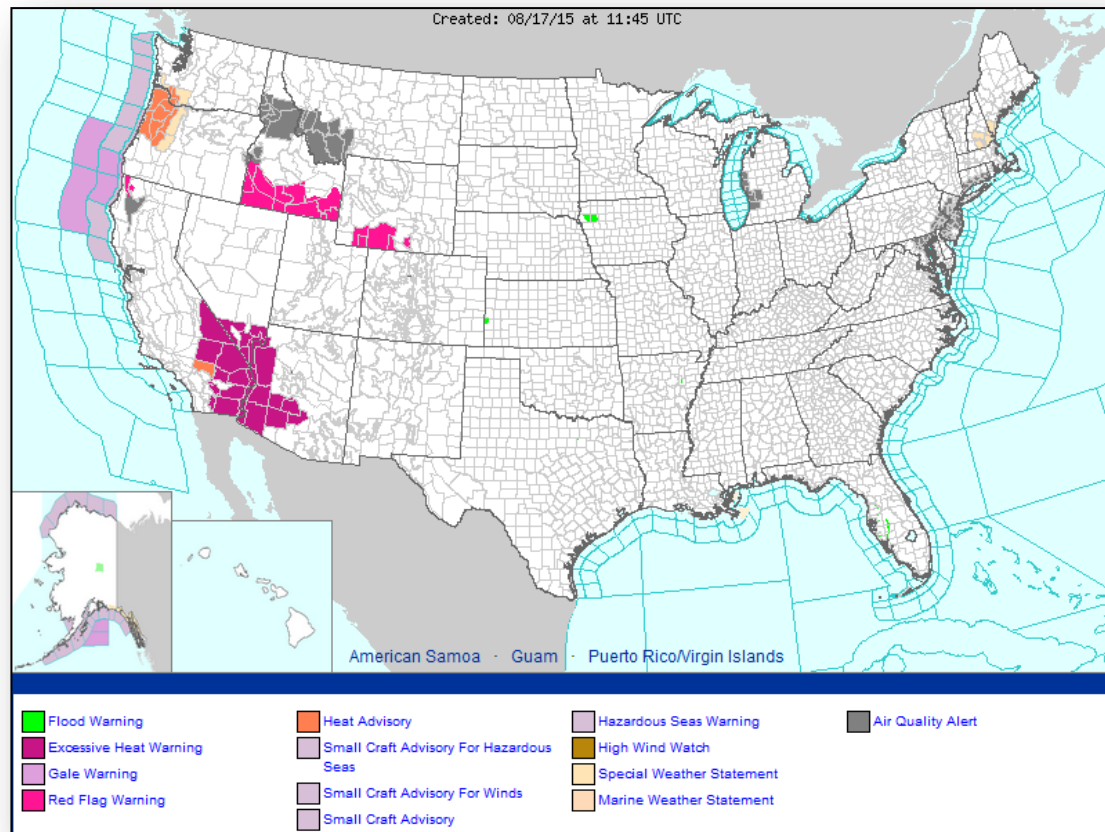


Tomorrow

Active Watches/Warnings



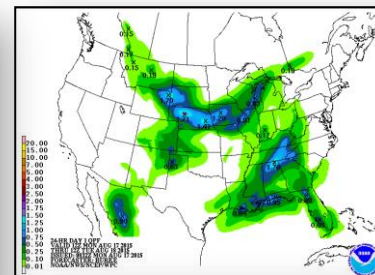
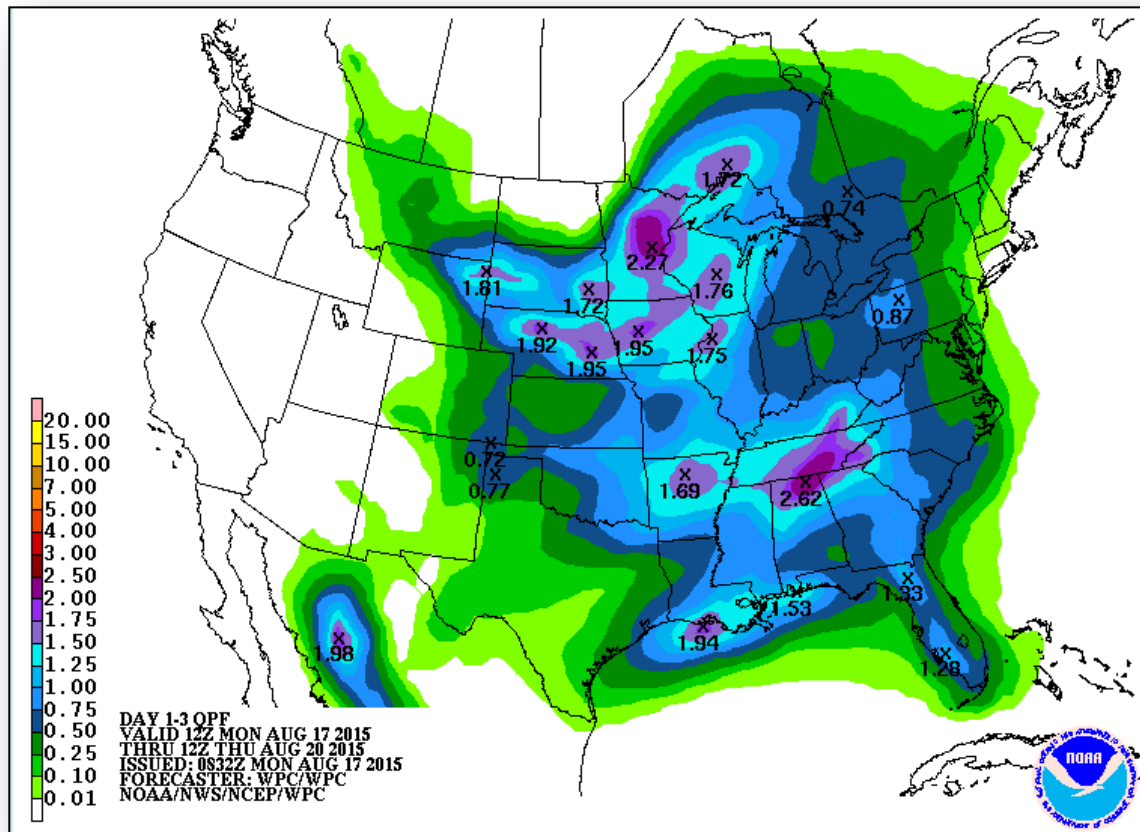
FEMA



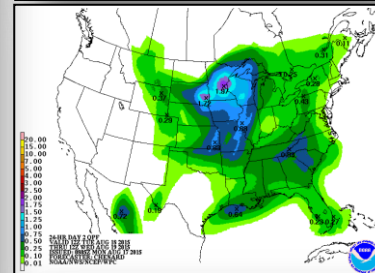
Precipitation Forecast, 1 – 3 Day



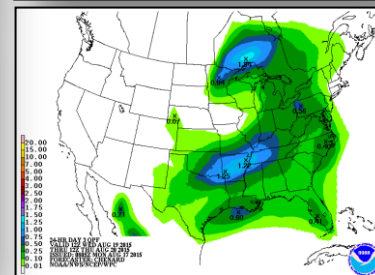
FEMA



Day 1

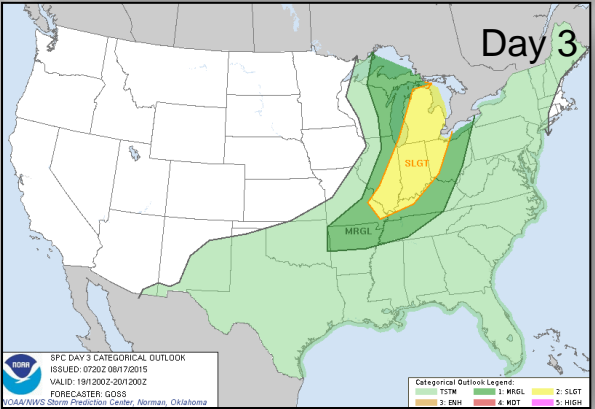
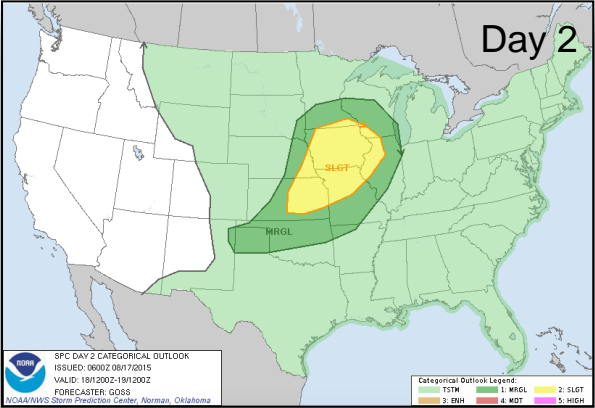
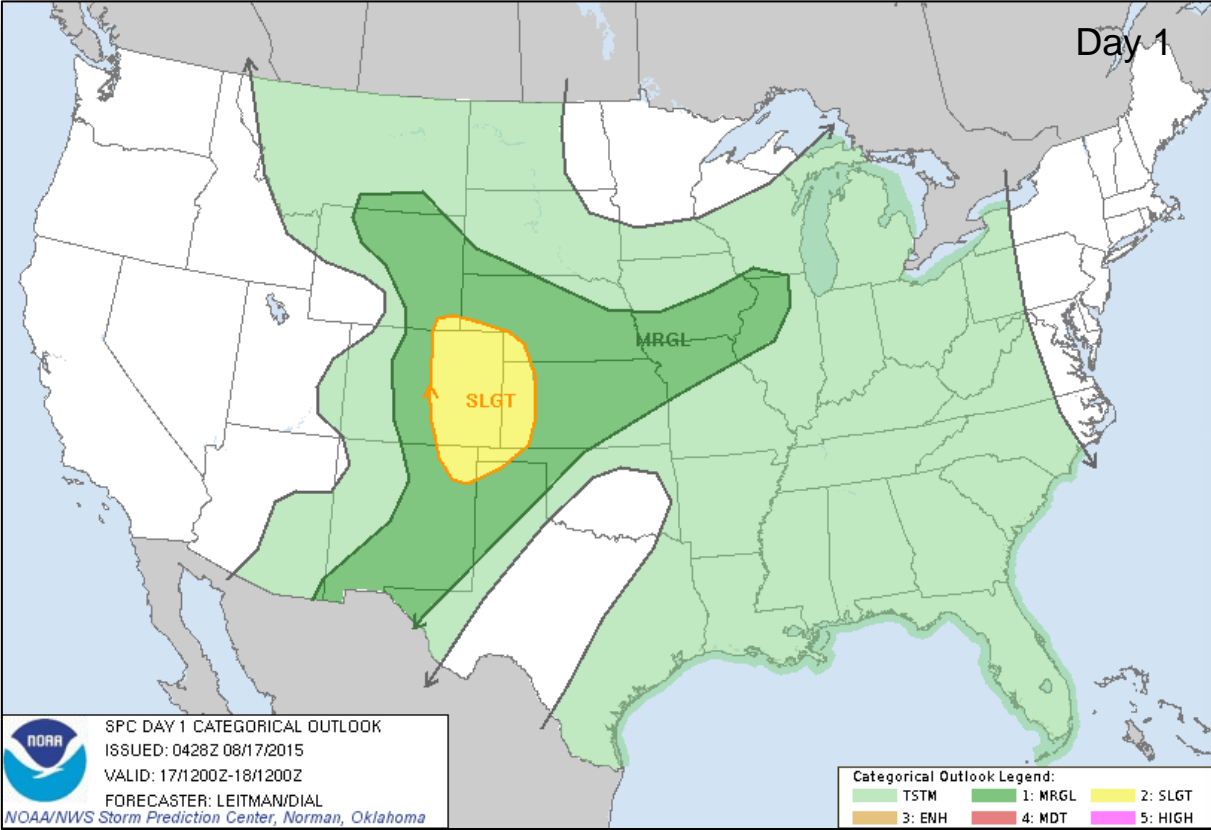


Day 2

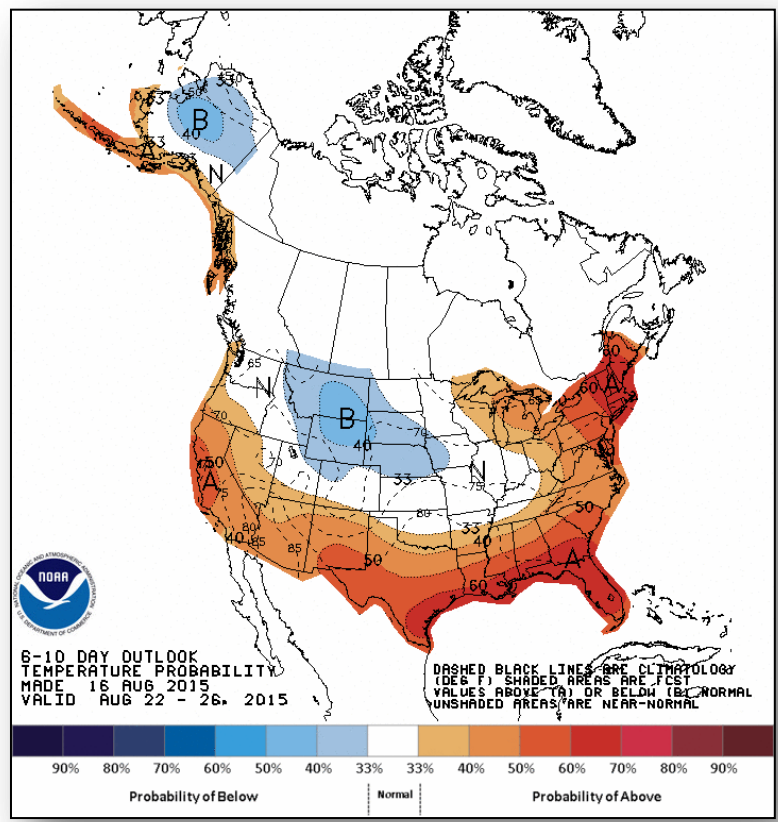


Day 3

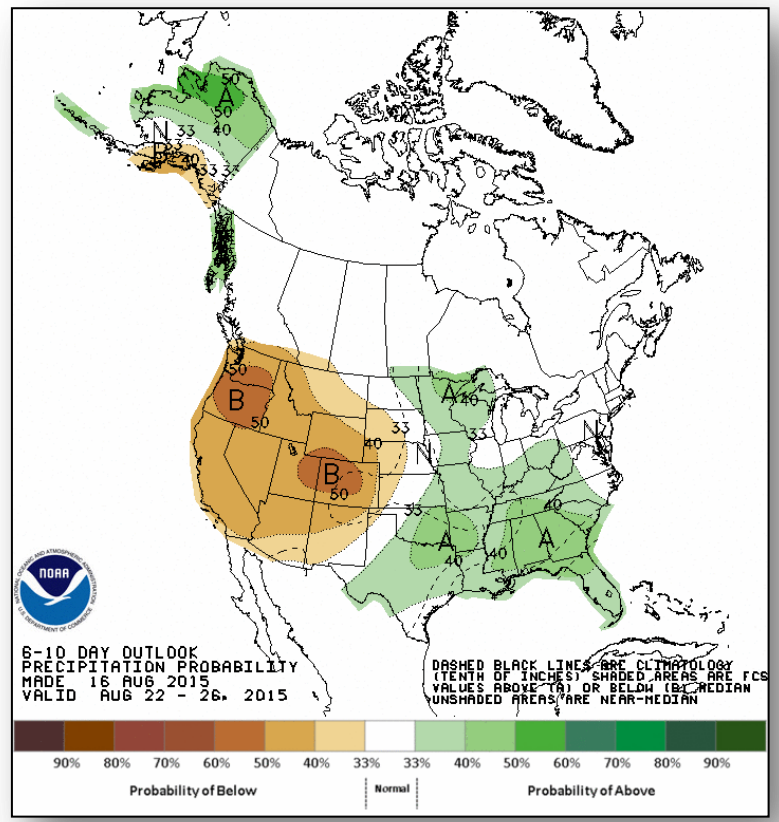
Severe Weather Outlook, Days 1 – 3



6-10 Day Outlooks



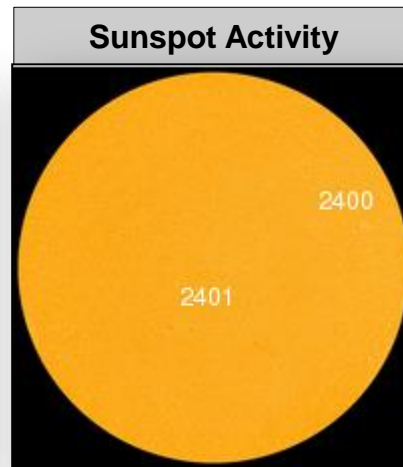
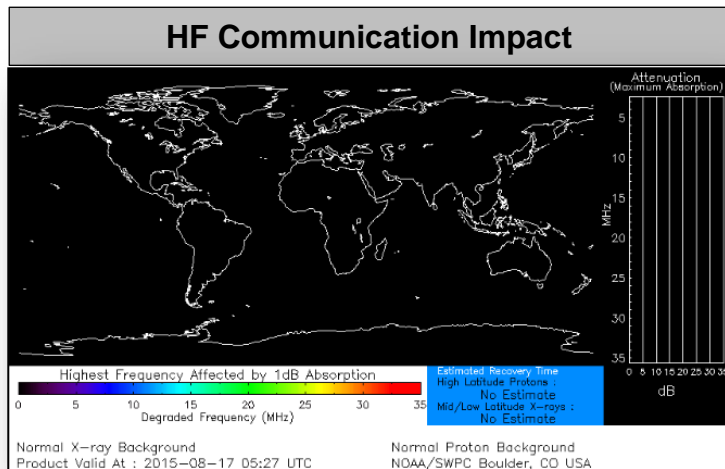
Temperature Probability



Precipitation Probability

Space Weather

	Past 24 Hours	Current	Next 24 Hours
Space Weather Activity:	Moderate	None	Minor
• Geomagnetic Storms	G2	None	G1
• Solar Radiation Storms	None	None	None
• Radio Blackouts	None	None	None



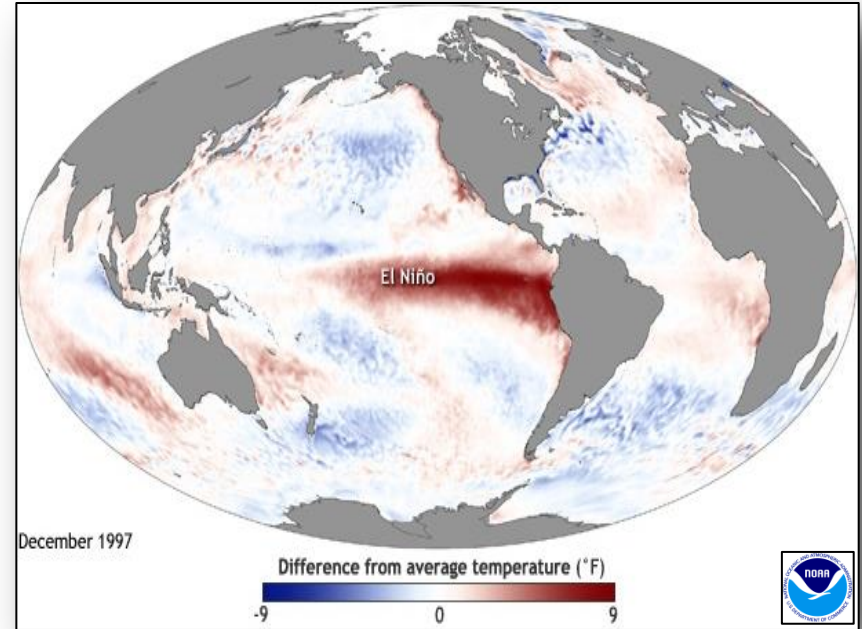
El Niño Status and Outlook

What is El Niño - Why is it important?

- El Niño is a warming of equatorial ocean temperatures in the central and eastern Pacific Ocean
- The ocean temperature deviations cause changes in tropical rainfall patterns
- Tropical rainfall changes alter jet stream strength and location
- El Niño is important in seasonal climate prediction

Latest El Niño Outlook:

- Greater than 90% chance El Niño continues through winter; 85% chance it will persist into early Spring 2016
- Forecasters now favor a strong El Niño event



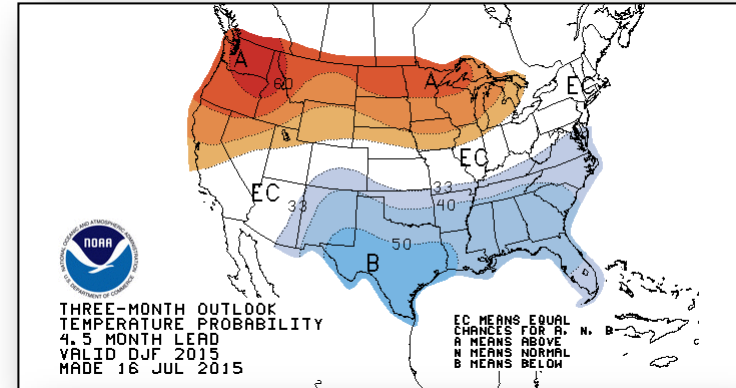
Potential El Niño Impacts



FEMA

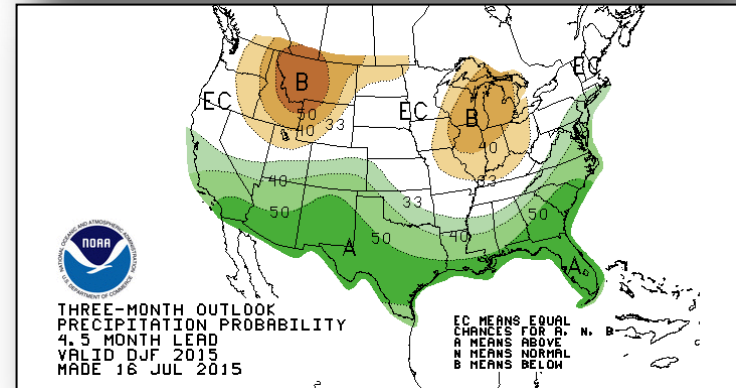
Winter Season Temperature Impacts:

- Warmer than normal temperatures favored across much of the northern tier of U.S.
- Below normal temperatures favored from the Southwest U.S. to the lower mid-Atlantic
- Odds for less frequent and shorter Arctic air outbreaks into the interior of the U.S. is elevated



Winter Season Precipitation Impacts:

- Above normal precipitation favored along southern tier of U.S.
- Drier than normal conditions favored for northern Rockies, Ohio Valley and Great Lakes
- Odds are elevated for a southern shifted storm track, potential heavy precipitation events for south
- Some drought improvement favored for California



FEMA Readiness – Deployable Teams /Assets



Deployable Teams/Assets									
Resource	Status	Total	FMC Available		Partially Available	Not Available	Detailed, Deployed, Activated	Comments	Rating Criterion
FCO		35	11	31%	0	1	23		OFDC Readiness: FCO Green Yellow Red Type 1 3+ 2 1 Type 2 4+ 3 2 Type 3 4 3 2 FDRC 3 2 1
FDRC		9	6	67%	0	0	5		
US&R		28	27	96%	0	1	0	NM-TF1 (Red) – Personnel shortages	<ul style="list-style-type: none"> • Green = Available/FMC • Yellow = Available/PMC • Red = Out-of-Service • Blue = Assigned/Deployed
National IMAT		3	3	100%	0	0	0		<ul style="list-style-type: none"> • Green: 3 avail • Yellow: 1-2 avail • Red: 0 avail (<i>Individual N-IMAT red if 50% of Section Chiefs and/or Team Leader is unavailable for deployment.</i>)
Regional IMAT		13	4	31%	0	0	9	<u>Deployed:</u> RI to NH/MA Aug 6 - TBD (training but FMC) RIV (Team 1) deployed to KY RV to RVI supporting severe weather/flooding RVI (Team 1 & 2) to TX & personnel to OK RVII deployed to MO RVIII (Team 1) deployed to SD & CO RIX (Teams 1 & 2) deployed to CNMI RX IMAT scheduled to return from Guam	<ul style="list-style-type: none"> • Green: 7 or more avail • Yellow: 4 - 6 teams available • Red: > 8 teams deployed/unavailable <i>R-IMAT also red if TL Ops/Log Chief is unavailable & has no qualified replacement</i>
MCOV		59	46	78%	0	8	5	5 units in TX	<ul style="list-style-type: none"> • Green = 80 – 100% avail • Yellow = 60 – 79% avail • Red = 59% or below avail • Readiness remains 95%

FEMA Readiness – National/Regional Teams



National/Regional Teams									
Resource	Status	Total	FMC Available		Partially Available	Not Available	Status	Comments	Rating Criterion
NWC		5	5	100%	0	0	Not Activated	Returned to Watch/Steady State	• Green = FMC • Yellow = PMC • Red = NMC
NRCC		2	344	89%	0	44	Not Activated		
HLT		1	N/A	N/A	0	0	Activated		
DEST							Not Activated		
RRCCs		10	10	100%	0	0	Activated	Region IX RRCC to normal ops noon at EDT Region VIII RRCC at Enhanced Watch	
RWCs/MOCs		10	10	100%	0	0	Activated	Region IX at Enhanced Watch	



FEMA

FEMA's mission is to support our citizens and first responders to ensure that as a nation we work together to build, sustain, and improve our capability to prepare for, protect against, respond to, recover from, and mitigate all hazards.