

The Disaster Center is dedicated to the idea that disaster mitigation is cost effective and individuals pursuing their own interest are the greatest potential force for disaster reduction.

Please consider making a small donation to the Disaster Center



When disaster mitigation is cost effective, we are on the road to bringing disasters to an end.



FEMA

Daily Operations Briefing

Wednesday, August 19, 2015

8:30 a.m. EDT

Significant Activity: August 18-19



Significant Events: None

Tropical Activity:

- Atlantic: Tropical Storm Danny
- Eastern Pacific: No Tropical Cyclone Activity expected during the next 48 hours
- Central Pacific: Disturbance 1 – Medium (60%)
- Western Pacific: No significant activity affecting US territories or interests

Significant Weather:

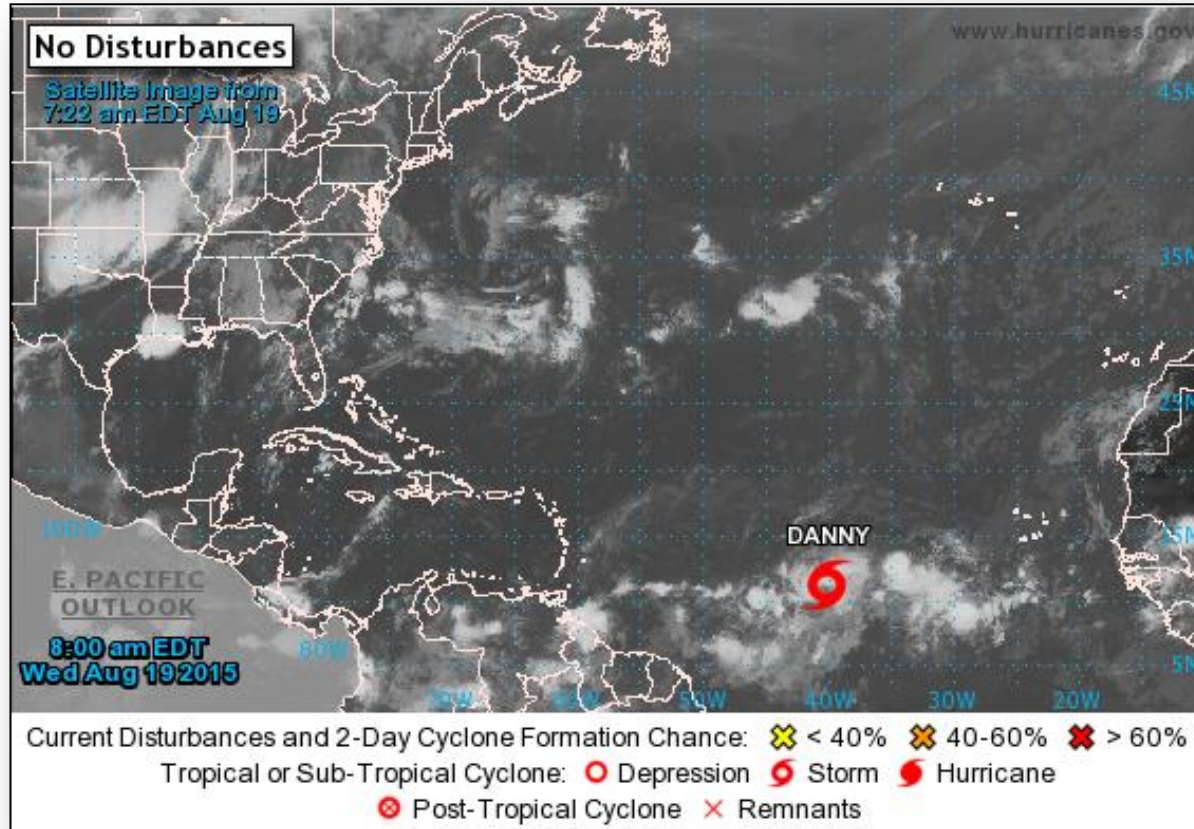
- Severe thunderstorms possible – Great Lakes
- Flash flooding possible – Southern Plains to the Ohio Valley
- Rain & thunderstorms: Possible for portions of the Southeast
- Red Flag Warnings: WA, OR, & ID
- Space Weather: Past 24 hours – no space weather storms occurred; next 24 hours – none predicted

Declaration Activity:

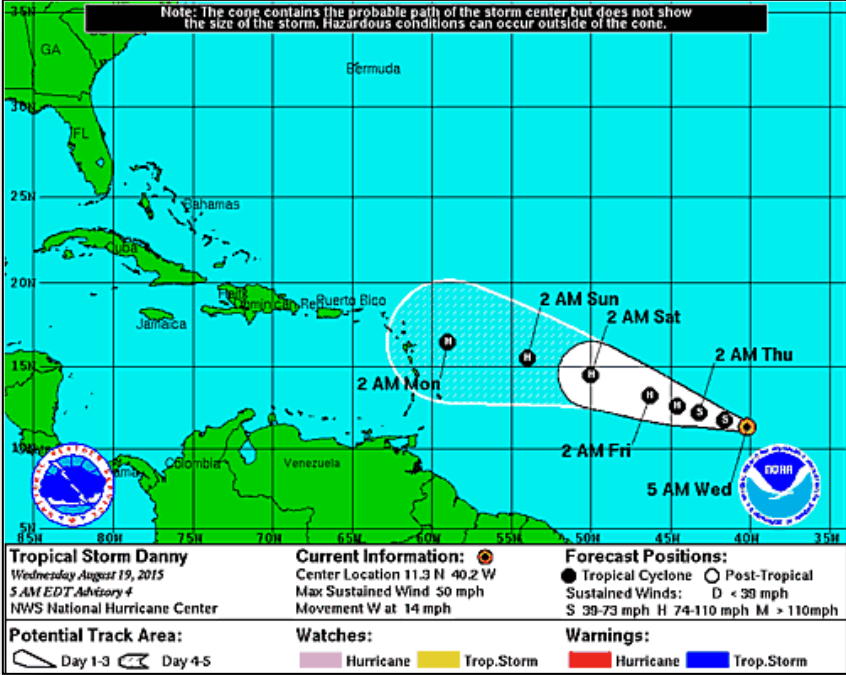
Amendment #1 to FEMA-4235-DR-CNMI

- Effective August 18, 2015, adds Saipan and Tinian for Public Assistance

2-Day Tropical Outlook – Atlantic



Atlantic – Tropical Storm Danny



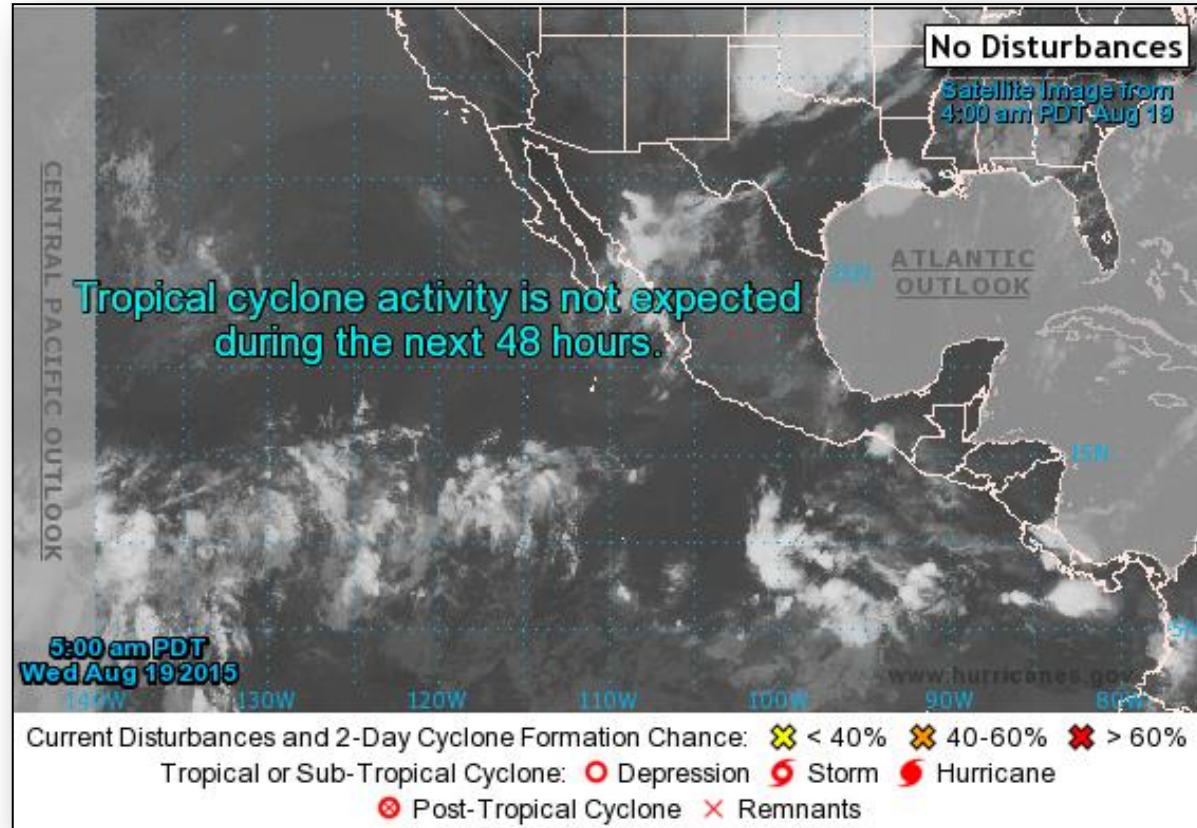
Tropical Storm Danny: (Advisory #4 as of 5:00 a.m. EDT)

- Located about 1,445 miles E of the Lesser Antilles
- Maximum sustained winds near 50 mph; with higher gusts
- Moving toward the W at 14 mph
- System strengthening and could be a hurricane next 48 hours
- Tropical storm force winds extending outward 45 miles

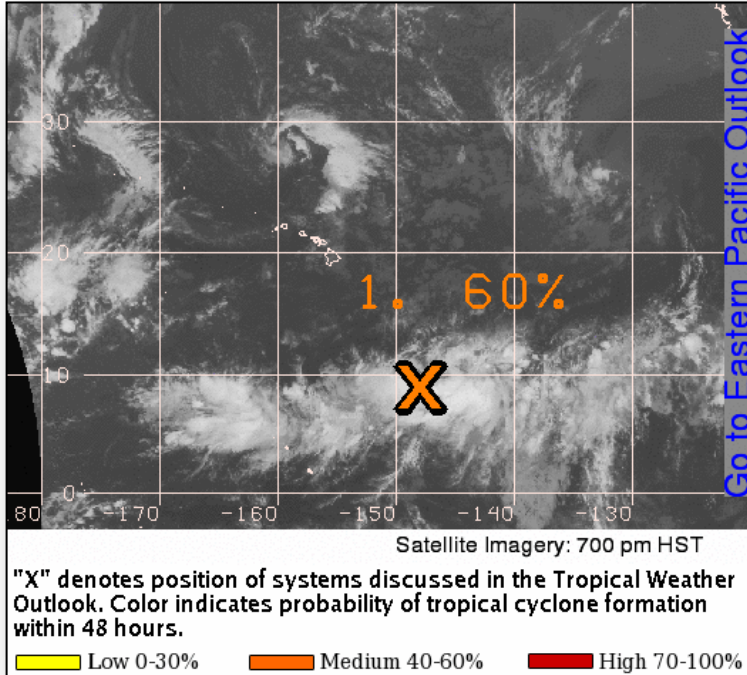
2-Day Tropical Outlook – Eastern Pacific



FEMA



Tropical Outlook – Central Pacific



Disturbance 1: (as of 8:00 a.m. EDT)

- Broad area of nearly stationary low pressure
- Located about 915 miles SSE of Hilo, Hawaii
- Environmental conditions support slow development over the next couple of days
- Formation chance through 48 hours: Medium (60%)

Wildfire Summary



| Fire Name (County) | FMAG # | Acres burned | % Contained Est. Containment date | Evacuations (Residents) | Structures Threatened | Structures Damaged/ Destroyed | Fatalities / Injuries |
|--|------------------------------------|---------------------|--|----------------------------|--------------------------|-------------------------------------|--------------------------|
| Washington (4) | | | | | | | |
| Chelan (Reach) Complex (Chelan County) | FEMA-5100-FM-WA Approved Aug 14 | 69,445 (+6,020) | 50% (+20) | Mandatory (2,750) | 500 homes | 0/29 (homes) | 0/0 |
| Stickpin (Ferry County) | FEMA-5101-FM-WA Approved Aug 15 | 37,317 (-533) | 5% (+5) | Mandatory (50) | 3,550 (2,400 homes) | 0/0 | 0/0 |
| Stevens County Complex (Stevens County) | FEMA-5103-FM-WA Approved Aug 15 | 10,486 (+1,631) | 7% (-3) | Mandatory (75) | 1,030 (690 homes) | 0/72 (+59) 18 (+13) homes | 1/0 |
| Okanogan Complex (Okanogan County) | FEMA-5104-FM-WA Approved Aug 14 | 30,927 (+18,490) | 20% (+20) | Mandatory | 115 homes (+15) | 0/3 (+2) | 0/0 |

Wildfire Summary



| Fire Name (County) | FMAG # | Acres burned | % Contained Est. Containment date | Evacuations (Residents) | Structures Threatened | Structures Damaged/ Destroyed | Fatalities / Injuries |
|---|------------------------------------|---------------------|--|----------------------------|--|-------------------------------------|--------------------------|
| Idaho (2) | | | | | | | |
| Clearwater Complex [Fisher Fire removed] (Lewis & Idaho counties) | FEMA-5099-FM-ID Approved Aug 14 | 72,150 (+14,034) | 25% | Mandatory (400) | 1,630 (560 homes & 20 multiple residences) | 0/114 (44 homes) | 0/0 |
| Municipal Fire (Clearwater County) | FEMA-5105-FM-ID Approved Aug 15 | 1,872 (+72) | 25% (+10) | None | 11 (3 homes) | 0/0 | 0/0 |
| Oregon (2) | | | | | | | |
| Canyon Creek Complex (Grant County) | FEMA-5102-FM-OR Approved Aug 15 | 43,738 (+3,606) | 0% | Mandatory (50) | 500 homes | 50 homes/ 26 homes | 0/2 |
| Cornet-Windy Ridge Complex (Baker County) | FEMA-5097-FM-OR Approved Aug 13 | 103,540 (+4,270) | 45% (+10) | Mandatory (413) | 462 (187 homes) | 0/25 (4 homes) | 0/1 |

Disaster Requests & Declarations



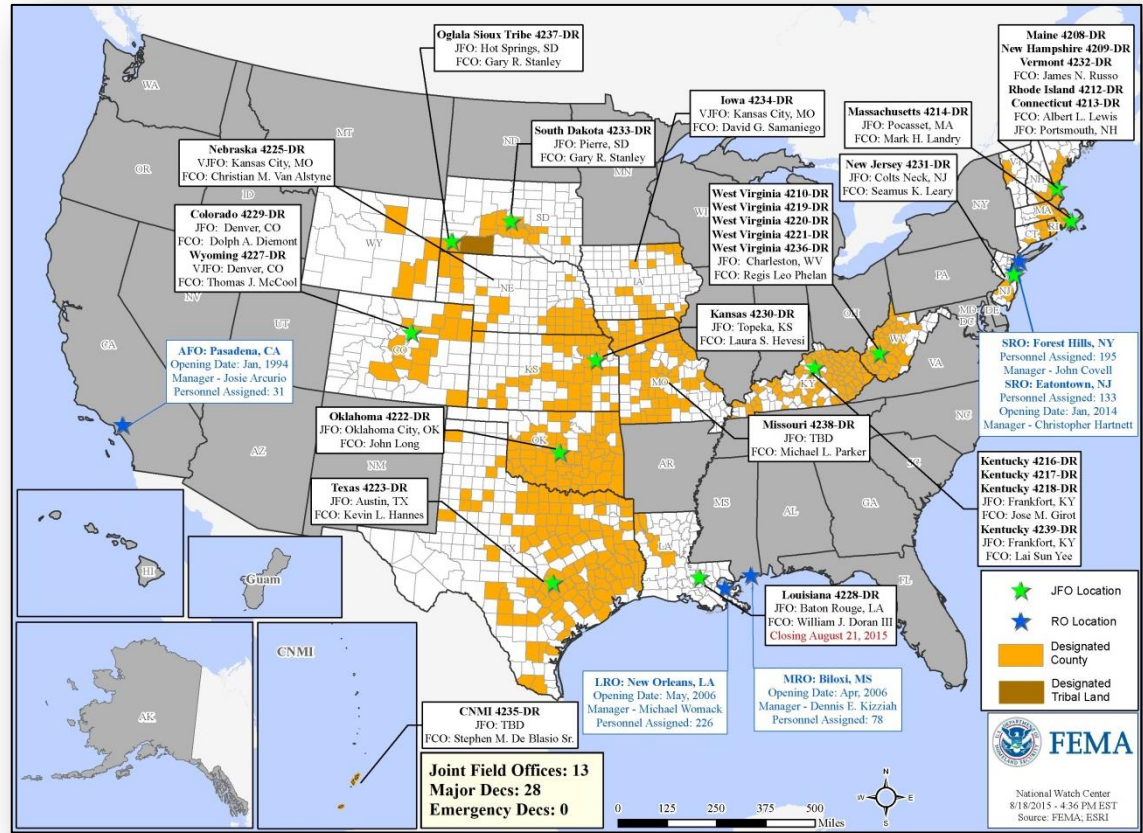
| Declaration Requests in Process | | Requests APPROVED (since last report) | Requests DENIED (since last report) |
|---------------------------------|----------------|--|--|
| 1 | Date Requested | 0 | 0 |
| AK – DR Wildfires | July 24, 2015 | | |

Disaster Amendments



| Amendment | Effective Date | Action |
|--------------------------------------|-----------------|--|
| Amendment No. 1 FEMA-4235-DR-CNMI | August 18, 2015 | Adds Saipan and Tinian for Public Assistance |

Open Field Offices as of August 19



FEMA

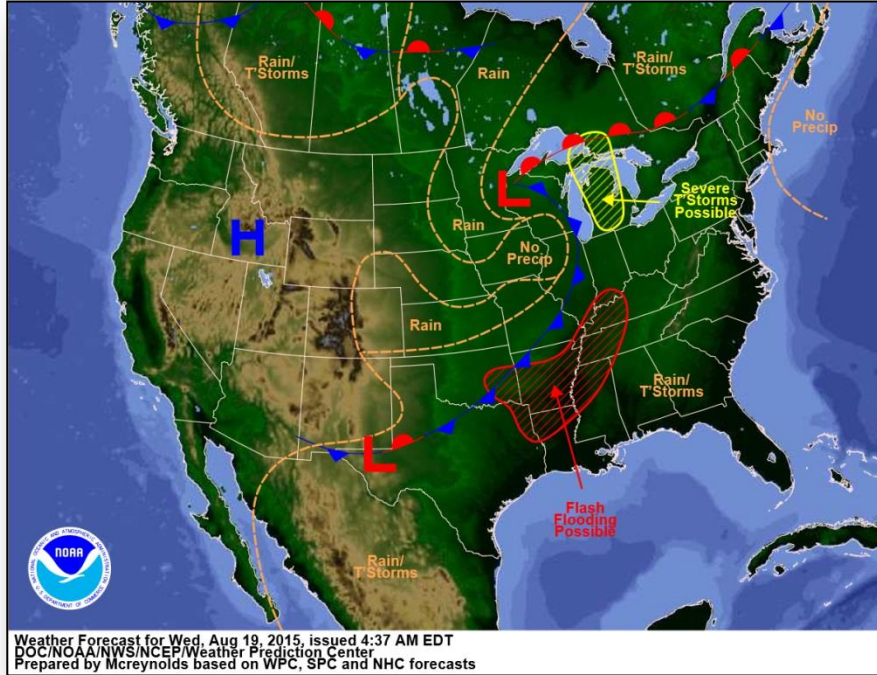
National Watch Center
 8/18/2015 - 4:36 PM EST
 Source: FEMA, ESRI

Joint Preliminary Damage Assessments

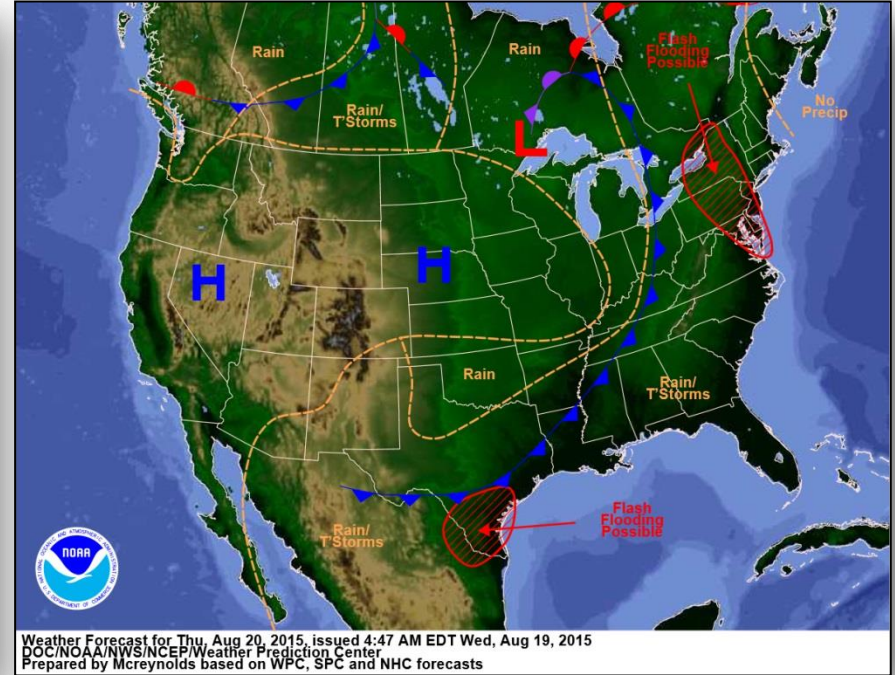


| Region | State / Location | Event | I/PA | Number of Counties | | Start – End |
|--------|------------------|--|------|--------------------|----------|-------------|
| | | | | Requested | Complete | |
| IV | FL | Heavy Rain & Flooding July 26, 2015 & continuing | IA | 5 | 3 | 8/12-TBD |
| | | | PA | 4 | 0 | TBD |
| V | IN | Severe Storms, Tornadoes, Straight-line Winds & Flooding June 7 – July 29, 2015 | PA | 26 | 0 | 8/18-TBD |

National Weather Forecast



Today

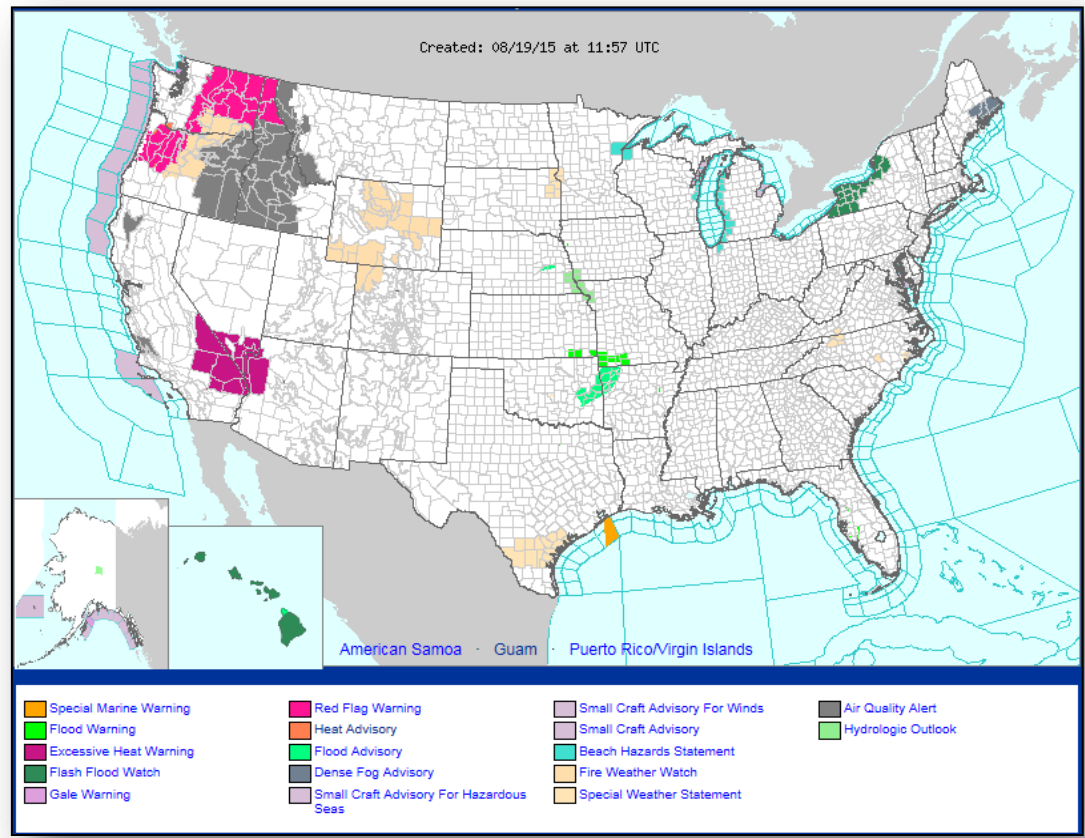


Tomorrow

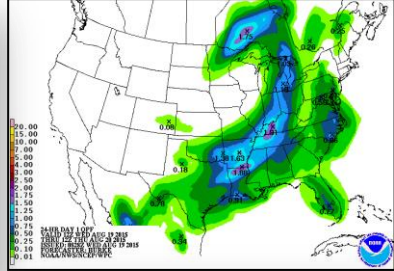
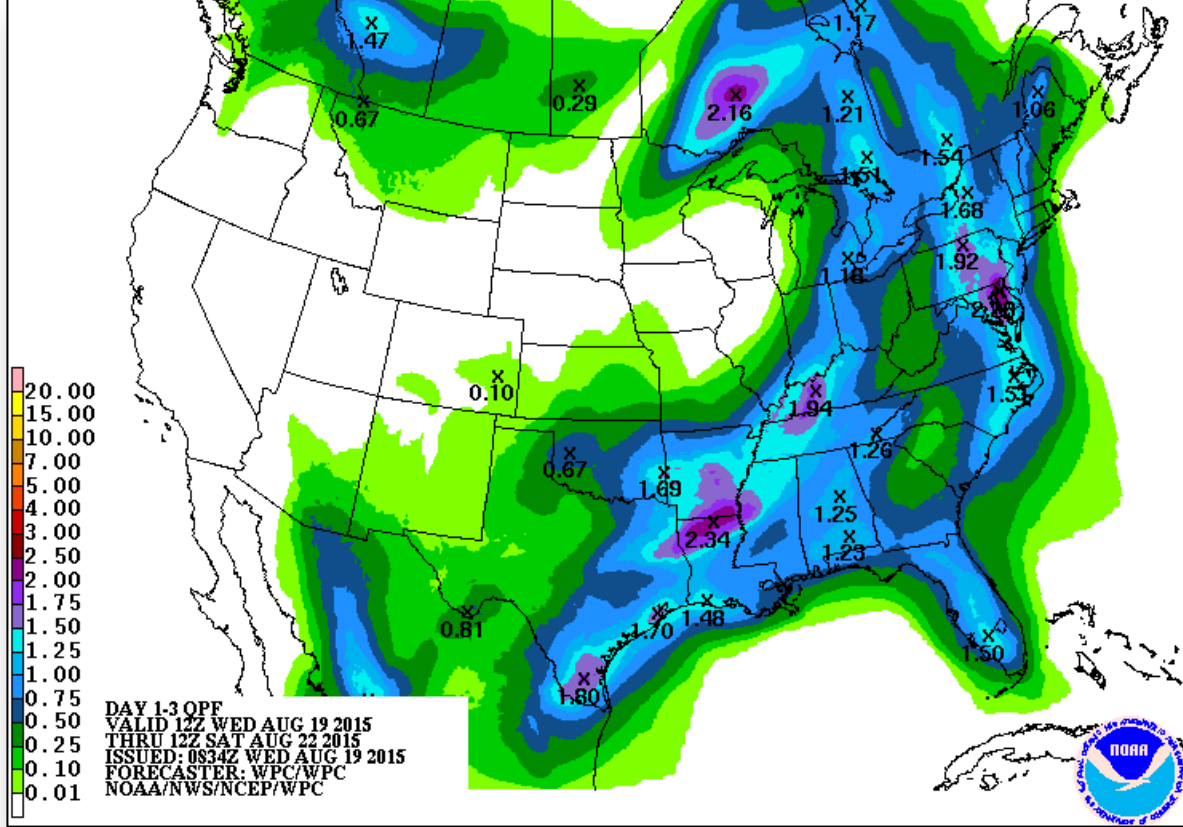
Active Watches/Warnings



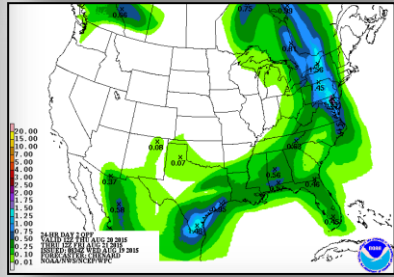
FEMA



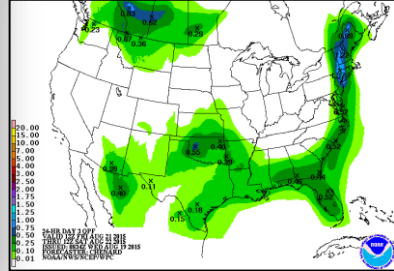
Precipitation Forecast, 1 – 3 Day



Day 1

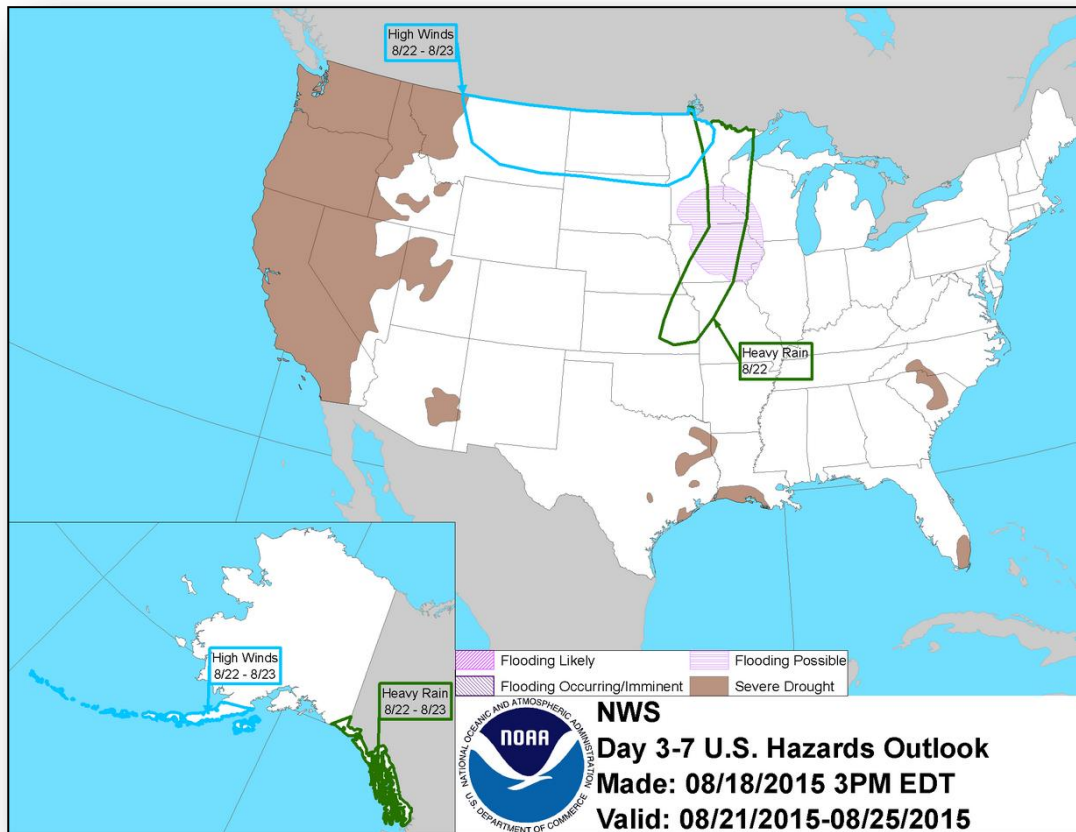


Day 2



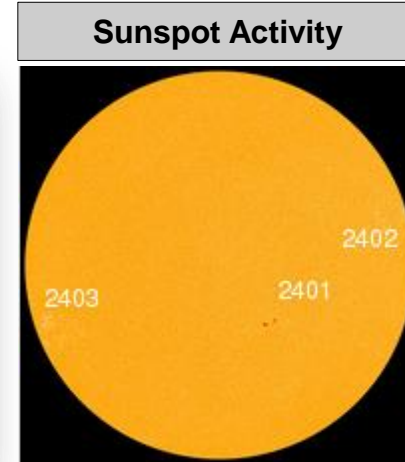
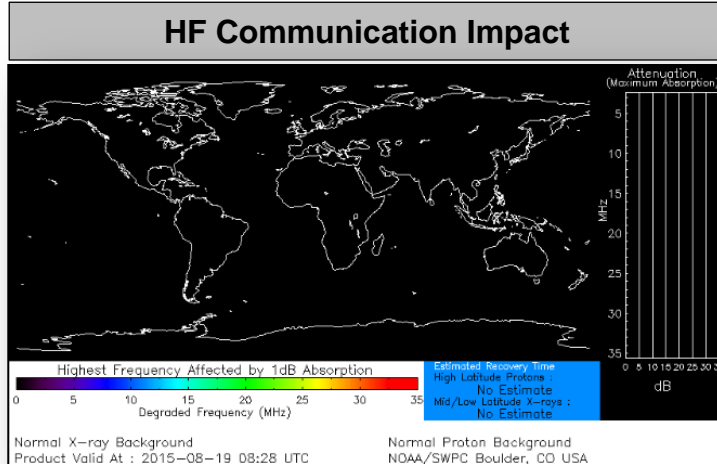
Day 3

Hazard Outlook, August 21 – 25



Space Weather

| | Past 24 Hours | Current | Next 24 Hours |
|--------------------------|---------------|---------|---------------|
| Space Weather Activity: | None | None | None |
| • Geomagnetic Storms | None | None | None |
| • Solar Radiation Storms | None | None | None |
| • Radio Blackouts | None | None | None |



FEMA Readiness – Deployable Teams /Assets



| Deployable Teams/Assets | | | | | | | | | |
|-------------------------|--------|-------|---------------|------|---------------------|---------------|-------------------------------|---|---|
| Resource | Status | Total | FMC Available | | Partially Available | Not Available | Detailed, Deployed, Activated | Comments | Rating Criterion |
| FCO | Green | 35 | 11 | 31% | 0 | 1 | 23 | | OFDC Readiness: FCO Green Yellow Red Type 1 3+ 2 1 Type 2 4+ 3 2 Type 3 4 3 2 FDRC 3 2 1 |
| FDRC | Green | 9 | 6 | 67% | 0 | 0 | 5 | | |
| US&R | Green | 28 | 27 | 96% | 0 | 1 | 0 | NM-TF1 (Red) – Personnel shortages | <ul style="list-style-type: none"> • Green = Available/FMC • Yellow = Available/PMC • Red = Out-of-Service • Blue = Assigned/Deployed |
| National IMAT | Green | 3 | 3 | 100% | 0 | 0 | 0 | | <ul style="list-style-type: none"> • Green: 3 avail • Yellow: 1-2 avail • Red: 0 avail (<i>Individual N-IMAT red if 50% of Section Chiefs and/or Team Leader is unavailable for deployment.</i>) |
| Regional IMAT | Yellow | 13 | 4 | 31% | 0 | 0 | 9 | <u>Deployed:</u> RI to NH/MA Aug 6 - TBD (training but FMC) RIV (Team 1) deployed to KY RV to RVI supporting severe weather/flooding RVI (Team 1 & 2) to TX & personnel to OK RVII deployed to MO RVIII (Team 1) deployed to SD & CO RIX (Teams 1 & 2) deployed to CNMI RX IMAT scheduled to return from Guam today | <ul style="list-style-type: none"> • Green: 7 or more avail • Yellow: 4 - 6 teams available • Red: > 8 teams deployed/unavailable R-IMAT also red if TL Ops/Log Chief is unavailable & has no qualified replacement |
| MCOV | Green | 59 | 50 | 85% | 0 | 8 | 1 | 1 unit in TX | <ul style="list-style-type: none"> • Green = 80 – 100% avail • Yellow = 60 – 79% avail • Red = 59% or below avail • Readiness remains 95% |

FEMA Readiness – National/Regional Teams



| National/Regional Teams | | | | | | | | | |
|-------------------------|--------|-------|---------------|------|---------------------|---------------|---------------|----------|--|
| Resource | Status | Total | FMC Available | | Partially Available | Not Available | Status | Comments | Rating Criterion |
| NWC | | 5 | 5 | 100% | 0 | 0 | Not Activated | | <ul style="list-style-type: none"> • Green = FMC • Yellow = PMC • Red = NMC |
| NRCC | | 2 | 344 | 89% | 0 | 44 | Not Activated | | |
| HLT | | 1 | N/A | N/A | 0 | 0 | Activated | | |
| DEST | | | | | | | Not Activated | | |
| RRCCs | | 10 | 10 | 100% | 0 | 0 | Not Activated | | |
| RWCs/MOCs | | 10 | 10 | 100% | 0 | 0 | Not Activated | | |



FEMA

FEMA's mission is to support our citizens and first responders to ensure that as a nation we work together to build, sustain, and improve our capability to prepare for, protect against, respond to, recover from, and mitigate all hazards.