

The Disaster Center is dedicated to the idea that disaster mitigation is cost effective and individuals pursuing their own interest are the greatest potential force for disaster reduction.

Please consider making a small donation to the Disaster Center



When disaster mitigation is cost effective, we are on the road to bringing disasters to an end.



# **FEMA**

## **Daily Operations Briefing**

**Thursday, August 20, 2015**

**8:30 a.m. EDT**

# Significant Activity: August 19-20



**Significant Events:** None

## **Tropical Activity:**

- Atlantic: Tropical Storm Danny; Disturbance 1 - Low (20%); Disturbance 2 - Low (near 0%)
- Eastern Pacific: Disturbance 1 – Low (near 0%)
- Central Pacific: Disturbance 1 – Medium (60%); Disturbance 2 – Low (10%); Disturbance 3 – Low (near 0%)
- Western Pacific: No significant activity affecting US territories or interests

## **Significant Weather:**

- Flash flooding possible – portions of the Northeast, Mid-Atlantic, Southern Plains, and Lower Mississippi Valley
- Rain & thunderstorms: Possible for portions of the Southern Plains across to the Southeast up to the Northeast
- Red Flag Warnings: WA, OR, ID, MT, & CO
- Critical Fire Weather: WA & OR
- Space Weather: Past 24 hours – no space weather storms occurred; next 24 hours – none predicted

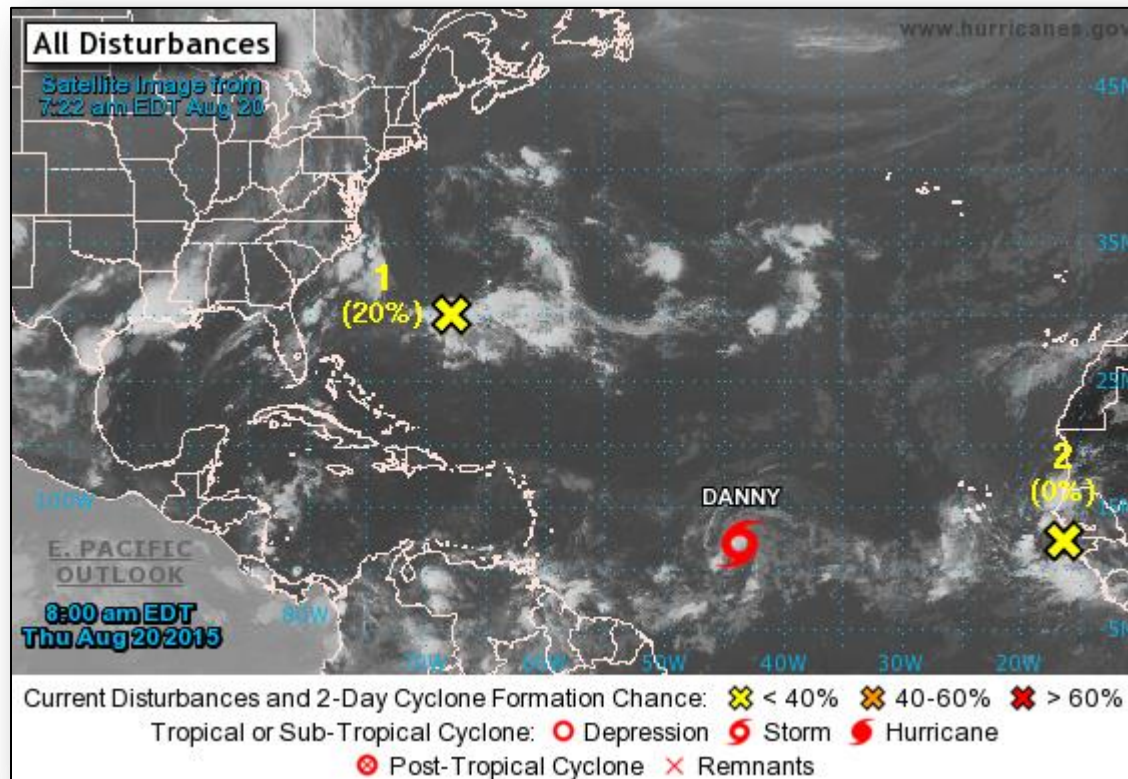
## **Declaration Activity**

- FEMA-5106-FM-WA approved August 19, 2015
- Emergency Declaration Request for WA

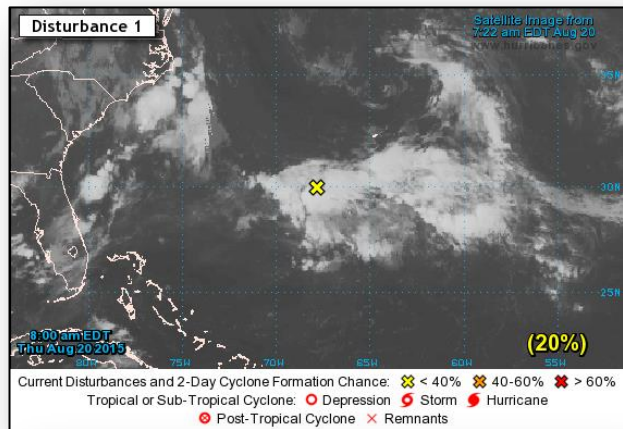
# 2-Day Tropical Outlook – Atlantic



FEMA

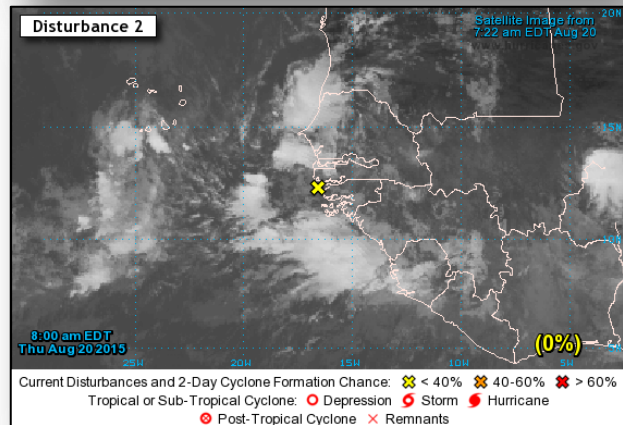


# 2-Day Tropical Outlook – Atlantic



## **Disturbance 1** (as of 8:00 a.m. EDT)

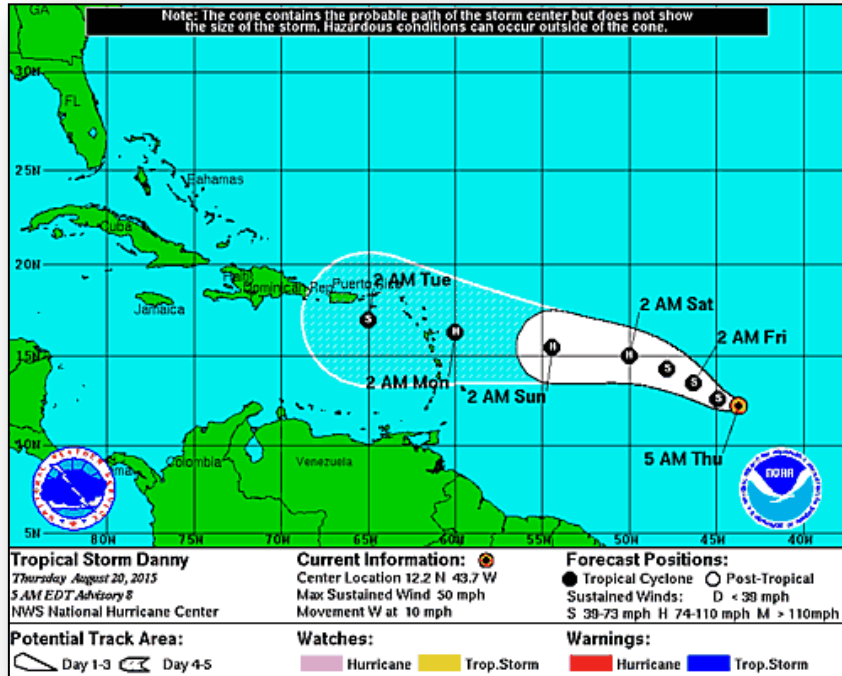
- A surface trough interacting with an upper-level low is producing an area of showers and thunderstorms
- Located to the southeast through southwest of Bermuda
- Moving slowly northward
- Environmental conditions support tropical or subtropical development over the weekend
- Formation chance through 48 hours: Low (20%)
- Formation chance through 5 days: Medium (60%)



## **Disturbance 2** (as of 8:00 a.m. EDT)

- A tropical wave near the coast of Africa is producing some disorganized showers and thunderstorms
- Moving west 15 to 20 mph
- Environmental conditions are forecast to become marginally favorable for some development
- Formation chance through 48 hours: Low (near 0%)
- Formation chance through 5 days: Low (20%)

# Atlantic – Tropical Storm Danny

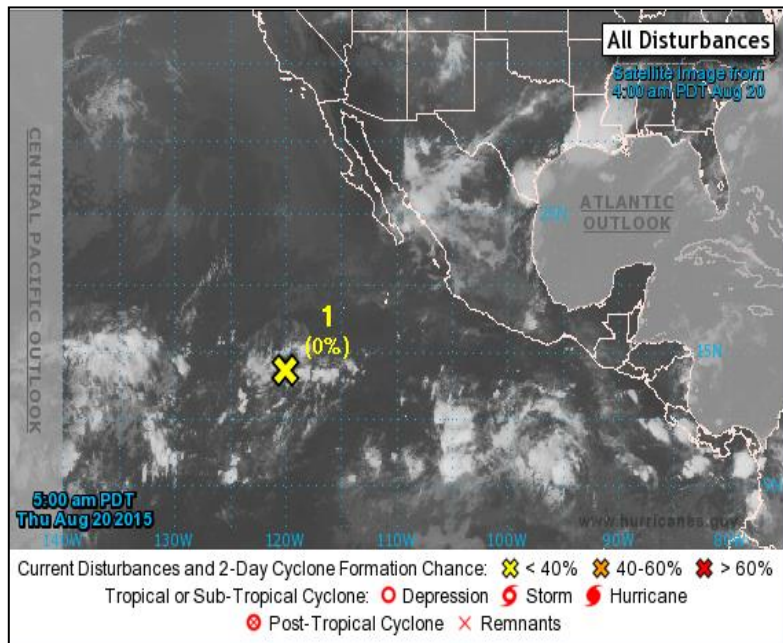


## Tropical Storm Danny: (Advisory #8 as of 5:00 a.m. EDT)

- Located about 1,200 miles E of the Lesser Antilles
- Maximum sustained winds near 50 mph; with higher gusts
- Moving toward the W at 10 mph
- System strengthening and could be a hurricane next 48 hours
- Tropical storm force winds extending outward 70 miles



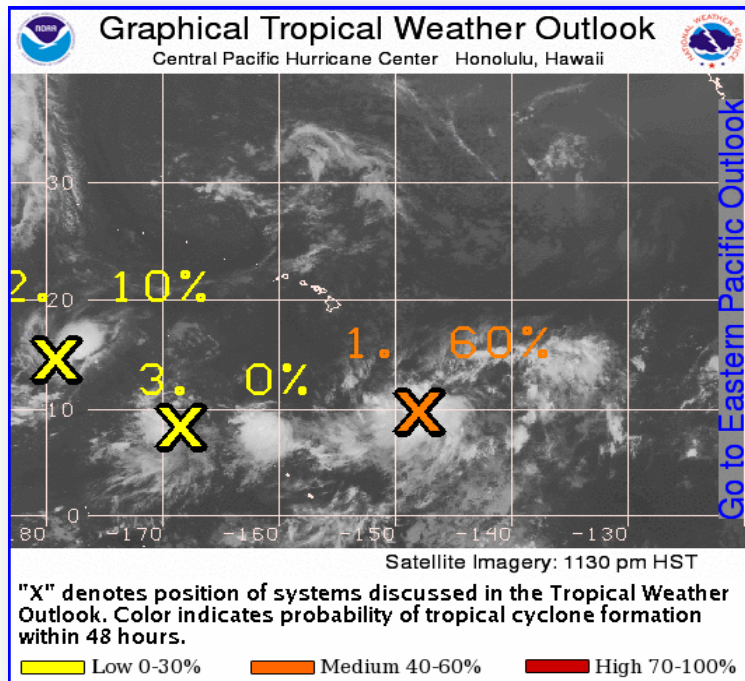
# 2-Day Tropical Outlook – Eastern Pacific



## Disturbance 1: (as of 8:00 a.m. EDT)

- An area of disturbed weather moving W at about 10 MPH
- Located about 950 miles SW of the Southern tip of the Baja California peninsula
- Environmental conditions could become favorable for some development by the weekend
- Formation chance through 48 hours: Low (near 0%)
- Formation chance through 5 days: Low (30%)

# Tropical Outlook – Central Pacific



## **Disturbance 1:** (as of 5:00 a.m. EDT)

- Broad area of nearly stationary low pressure
- Located about 900 miles SSE of Hilo, Hawaii
- Formation chance through 48 hours: Medium (60%)

## **Disturbance 2:** (as of 5:00 a.m. EDT)

- Broad area of nearly stationary pulsing convection
- Located about 1,500 miles WSW of Honolulu, Hawaii
- Formation chance through 48 hours: Low (10%)

## **Disturbance 3:** (as of 5:00 a.m. EDT)

- Broad area of nearly stationary persistent convection
- Located about 1,200 miles SW of Honolulu, Hawaii
- Formation chance through 48 hours: Low (0%)



# Twisp River Fire – WA



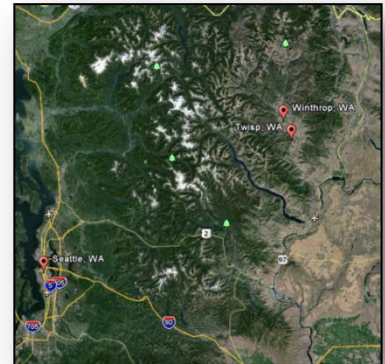
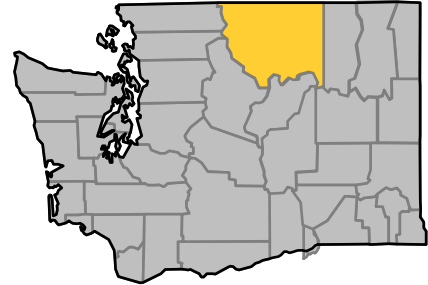
Fire Name (County)	Location	Acres burned	% Contained	FMAG	Evacuations	Structures Lost / Threatened	Fatalities / Injuries
Twisp River Fire (Okanogan County)	Twisp & Winthrop (pop. 2,600)	1,500	0%	FEMA-5106-FM-WA Approved Aug 19	Mandatory/ Voluntary (2,600)	0/1,200	3/4

## August 19, 2015

- Fire impacting the communities of Twisp (pop. 939) and Winthrop (pop. 415)
- Approximately 95% of threatened homes are primary residences
- Threatening high value timberland, cultural resources, camp grounds, wildlife area, power lines, communications and community infrastructure
- 3 fatalities reported – Firefighters involved in a vehicle accident
- 7 shelters are open with 85 occupants (Statewide)

## Response:

- WA EOC is Fully Activated
- FEMA Region X remains at Normal Operations; Region X IMAT will deploy to the RRCC later today



# FMAG Requests and Declarations



Action (since last report)			Total	FMAG No. and State	
Requests DENIED			0		
Requests APPROVED			1	FEMA-5106-FM-WA Twisp Fire, WA	
Approved FMAG Data					
Year	Current YTD	MTD	Monthly Average	Cumulative Acres Burned YTD	Cumulative Denied FMAGs YTD
2015	25	14	11	150,940	2
Year	Total Previous FY	++ Yearly Average		Total Acres Burned Previous Year	Total Denied FMAGs Previous Year
2014	31	37		152,648	2
* Reflects the 3-year average for current month/ ** Reflects 3-year total average					

# Wildfire Summary



Fire Name (County)	FMAG #	Acres burned	% Contained Est. Containment date	Evacuations (Residents)	Structures Threatened	Structures Damaged/ Destroyed	Fatalities / Injuries
Washington (5)							
Chelan (Reach) Complex (Chelan County)	FEMA-5100-FM-WA Approved Aug 14	68,465 (-980)	49% (-1)	Mandatory (800 (-1,950))	500 homes	0/29 (homes)	0/0
Stickpin (Ferry County)	FEMA-5101-FM-WA Approved Aug 15	41,586 (+4,269)	10% (+5)	Mandatory (50)	3,550 (2,400 homes)	0/0	0/0
Stevens County Complex (Stevens County)	FEMA-5103-FM-WA Approved Aug 15	13,308 (+2,872)	33% (+26)	Mandatory (75)	690 homes	0/19 (+1) (homes)	1/0
Okanogan Complex (Okanogan County)	FEMA-5104-FM-WA Approved Aug 14	54,838 (+23,911)	38% (+18)	Mandatory	145 homes (+30)	0/3	0/0
Twisp River Fire (Okanogan County)	FEMA-XXXX-FM-WA Approved Aug 19	1,500	0%	Mandatory/ Voluntary (2,600)	1,200 homes	0/0	3/4

# Wildfire Summary



Fire Name (County)	FMA# #	Acres burned	% Contained Est. Containment date	Evacuations (Residents)	Structures Threatened	Structures Damaged/ Destroyed	Fatalities / Injuries
Idaho (1)							
Clearwater Complex (Lewis & Idaho counties)	FEMA-5099-FM-ID Approved Aug 14	39,200 (-32,950)	30% (+5)	Mandatory (400)	1,670 (600 (+40) homes & 20 multi- residences)	0/114 (44 homes)	0/0
Oregon (1)							
Canyon Creek Complex (Grant County)	FEMA-5102-FM-OR Approved Aug 15	48,201 (+4,463)	10% (+10)	Mandatory (50)	500 homes	50 homes/ 36 (+11) homes	0/2

# Disaster Requests & Declarations



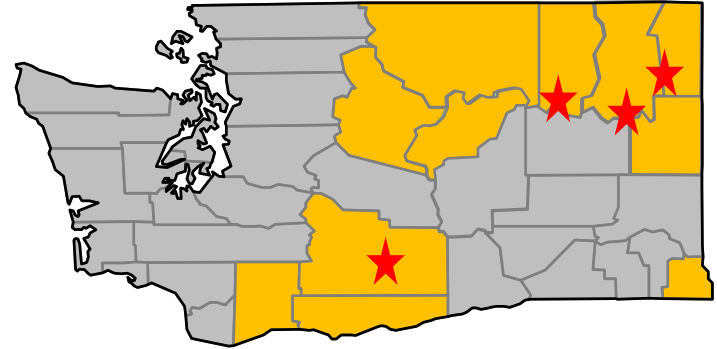
Declaration Requests in Process		Requests APPROVED (since last report)	Requests DENIED (since last report)
1	Date Requested	0	1
AK – DR Wildfires	July 24, 2015		Denied
WA – EM Wildfires	August 19, 2015		

# Emergency Declaration Request – WA



## August 19, 2015

- Governor requested an Emergency Declaration due to wildfires beginning August 13, 2015 and continuing
- Requesting:
  - Public Assistance (PA) for 11 counties and 4 Tribal Lands
  - Specifically requested Debris Removal and Emergency Protective Measures (Categories A&B) including direct federal assistance



■ Requested PA Counties

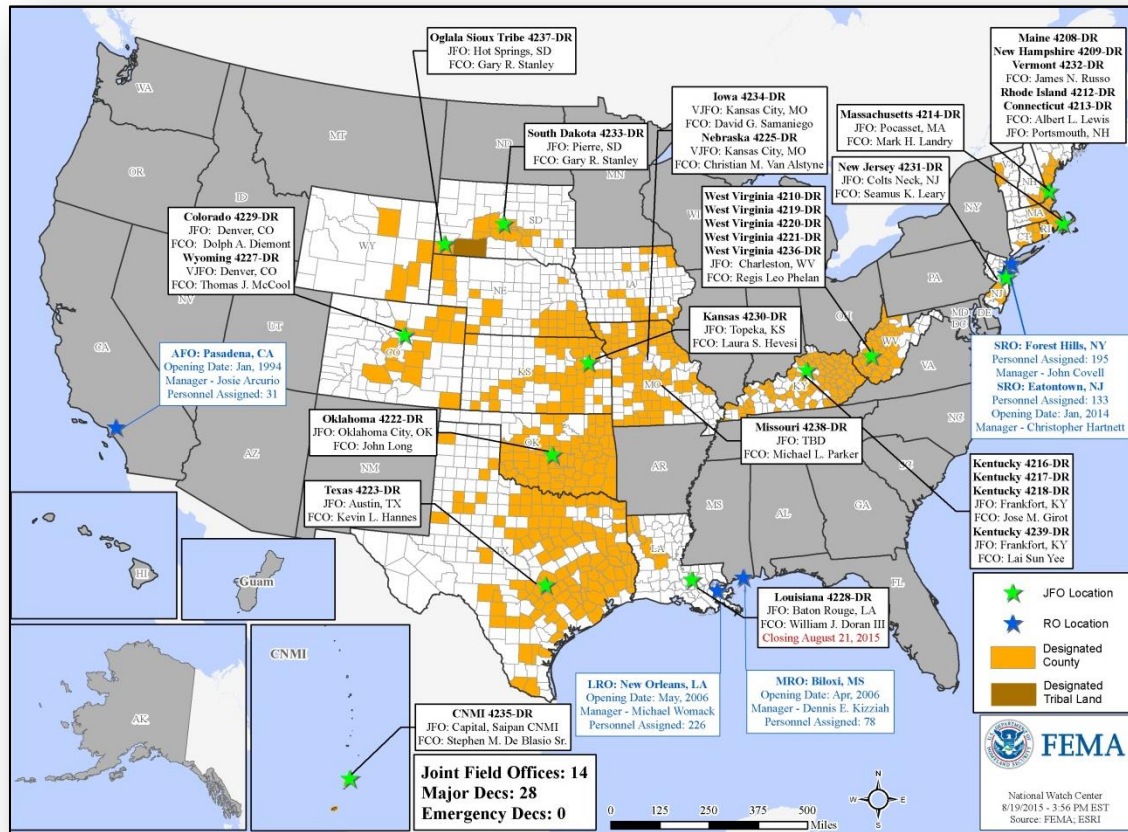
★ Requested PA Tribal Lands



# Open Field Offices as of August 20



FEMA

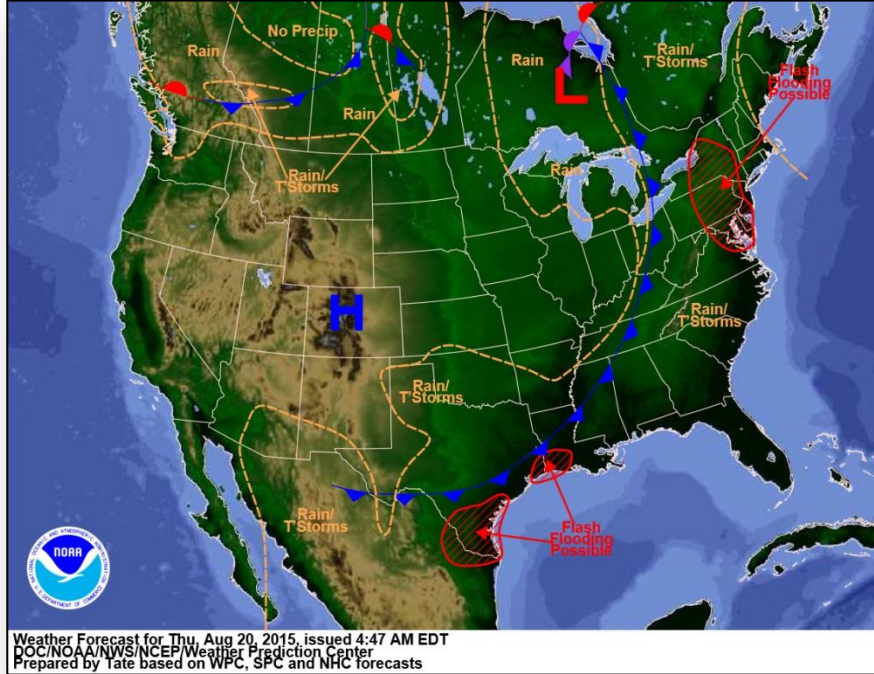


# Joint Preliminary Damage Assessments

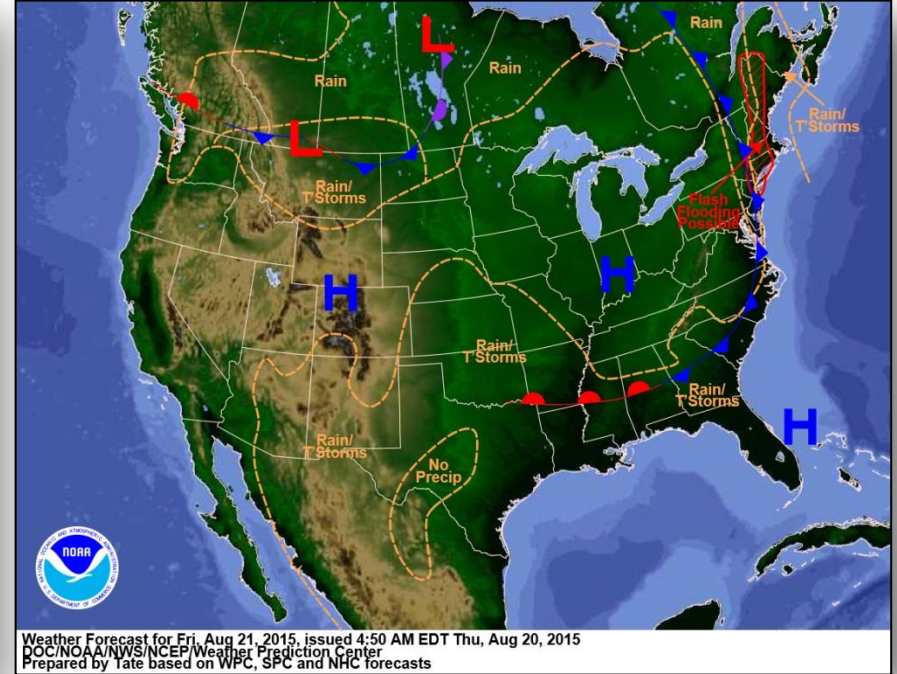


Region	State / Location	Event	I/PA	Number of Counties		Start – End
				Requested	Complete	
IV	FL	Heavy Rain & Flooding July 26, 2015 & continuing	IA	5	5 (+2)	8/12 - 8/19
			PA	4	0	TBD
V	IN	Severe Storms, Tornadoes, Straight-line Winds & Flooding June 7 – July 29, 2015	PA	26	0	8/18 - TBD

# National Weather Forecast



*Today*

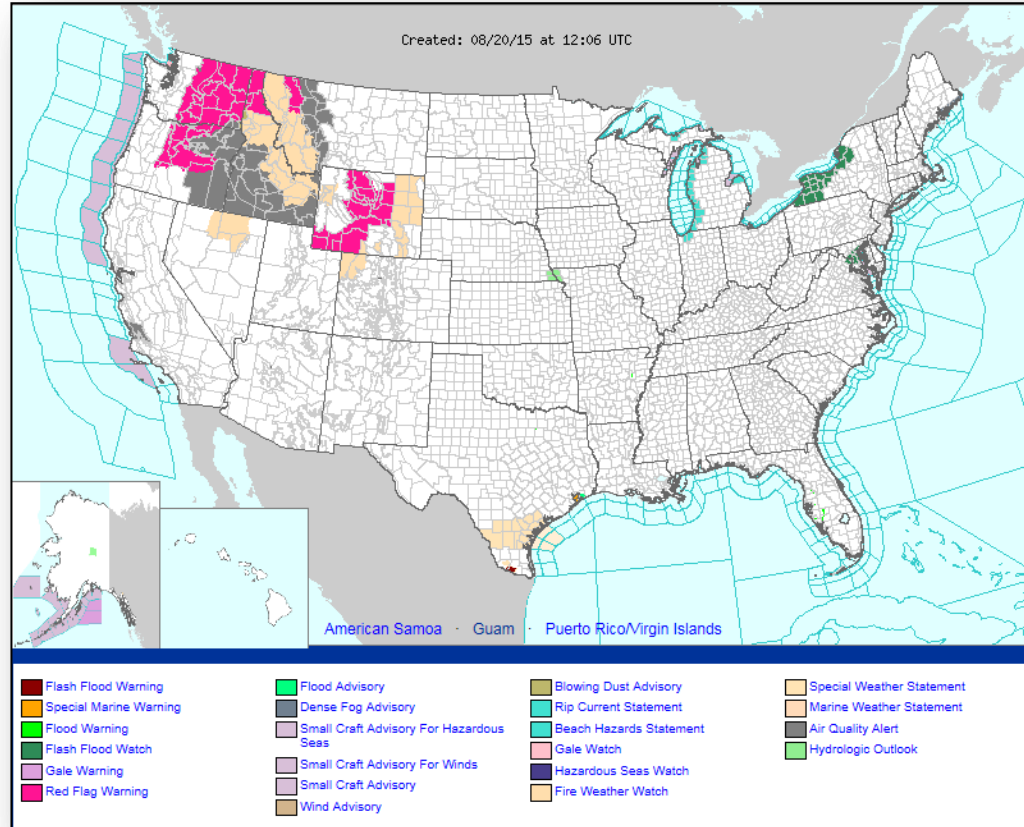


*Tomorrow*

# Active Watches/Warnings

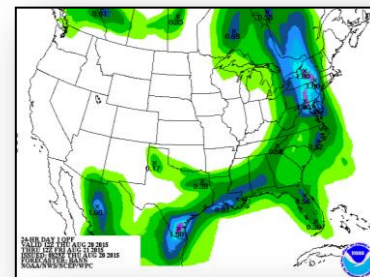
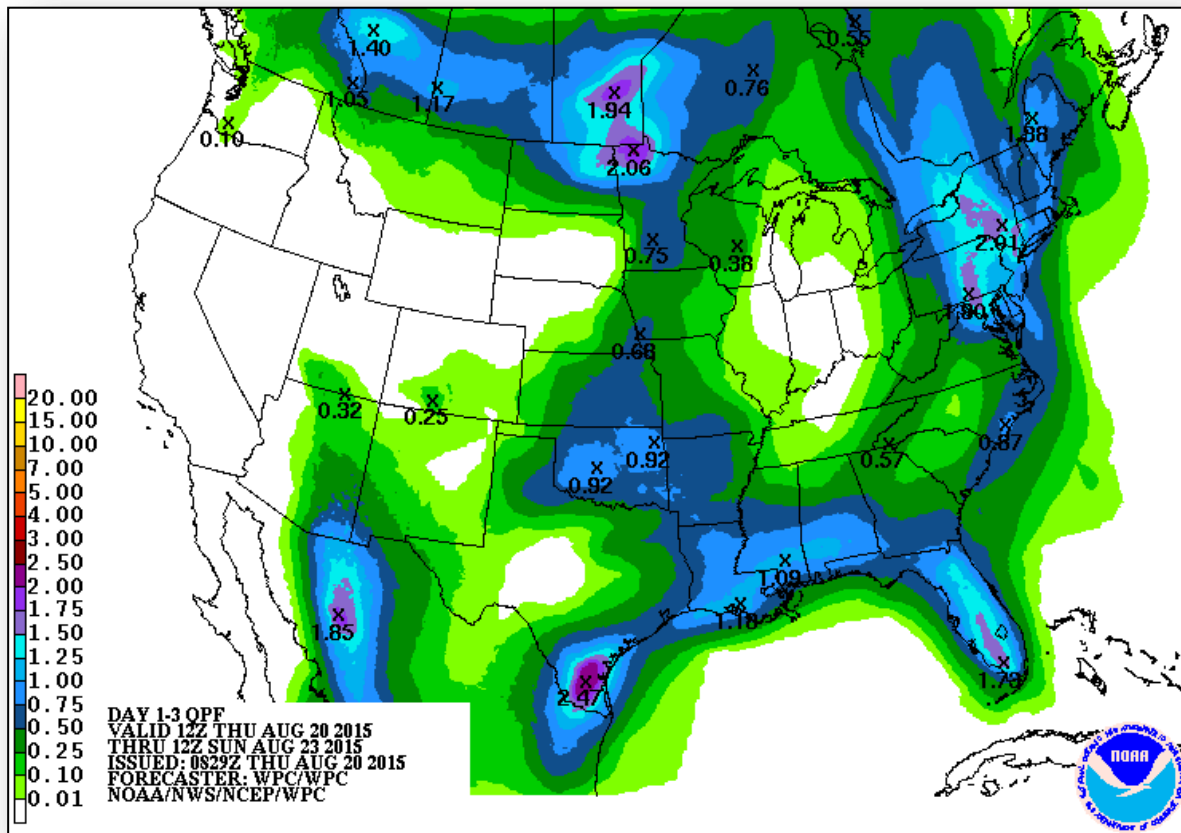


FEMA

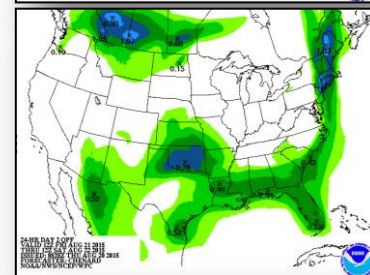




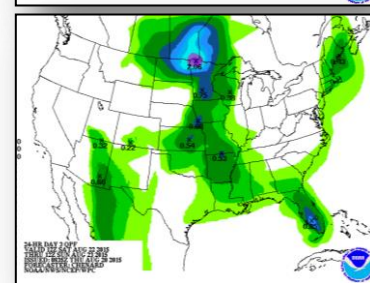
# Precipitation Forecast, 1 – 3 Day



Day 1

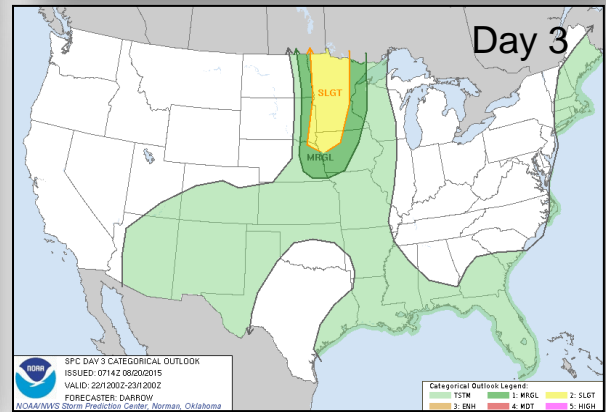
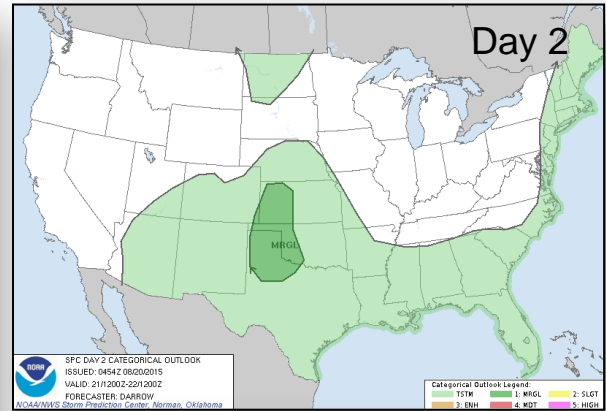
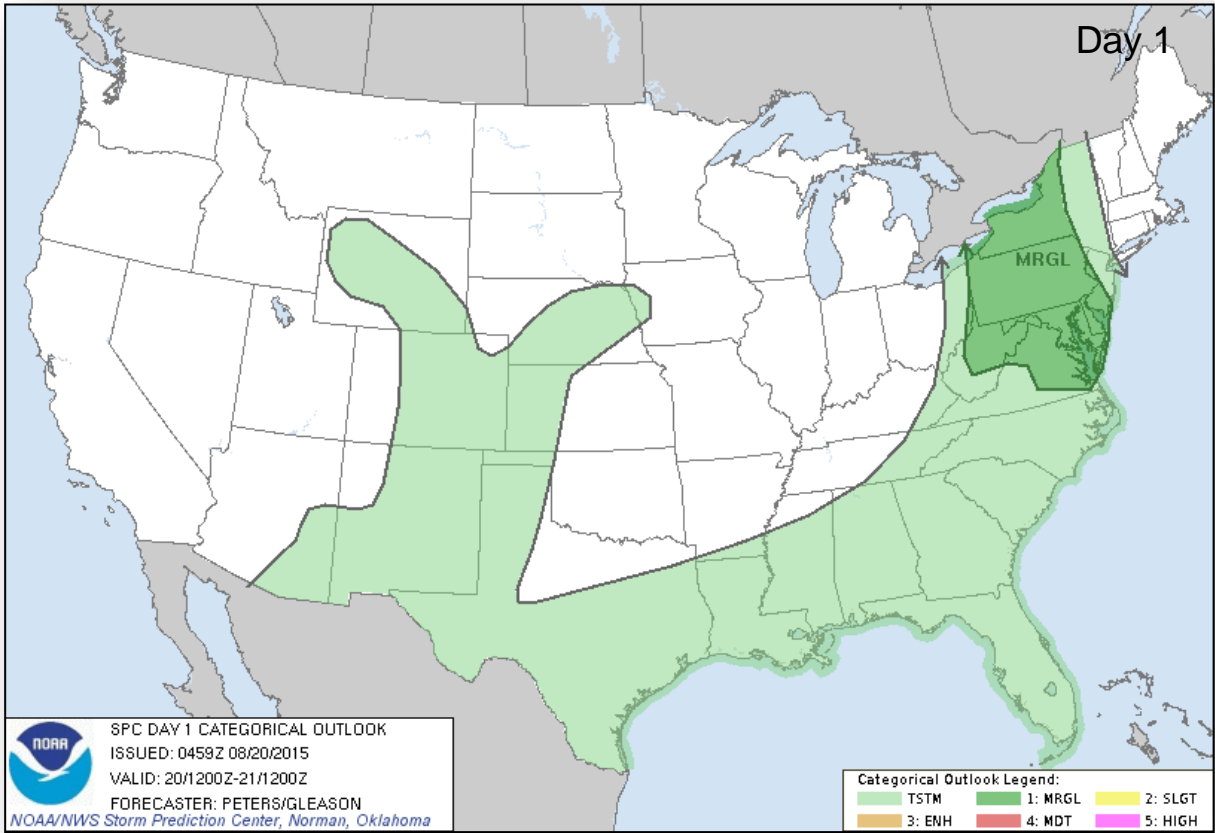


Day 2



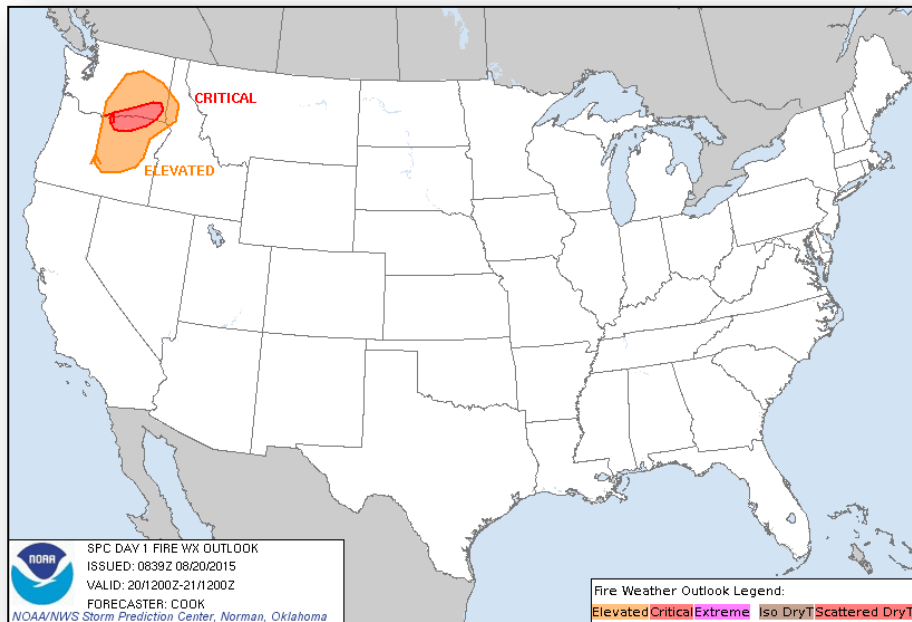
Day 3

# Severe Weather Outlook, Days 1 – 3

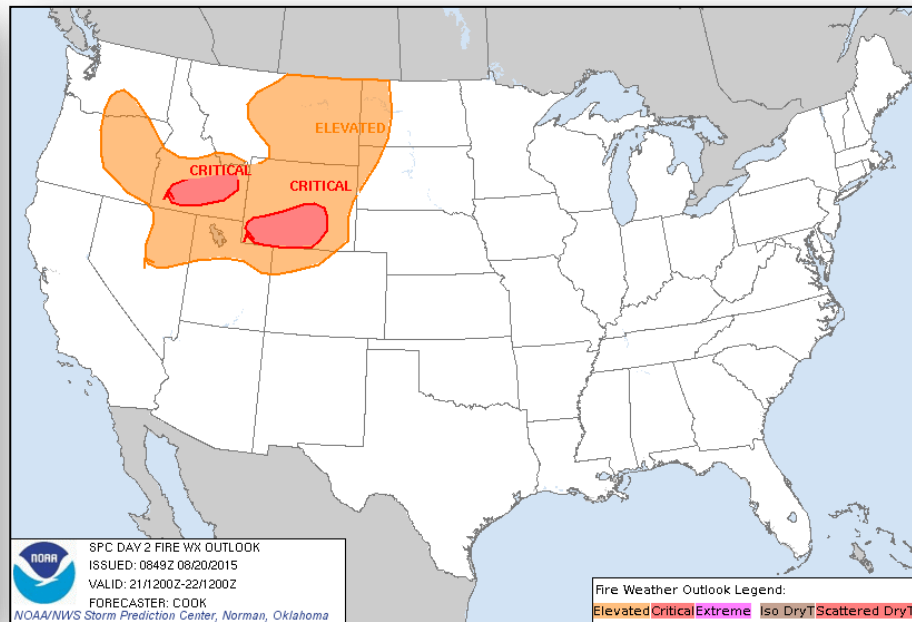




# Fire Weather Outlook, Days 1 – 2



*Today*

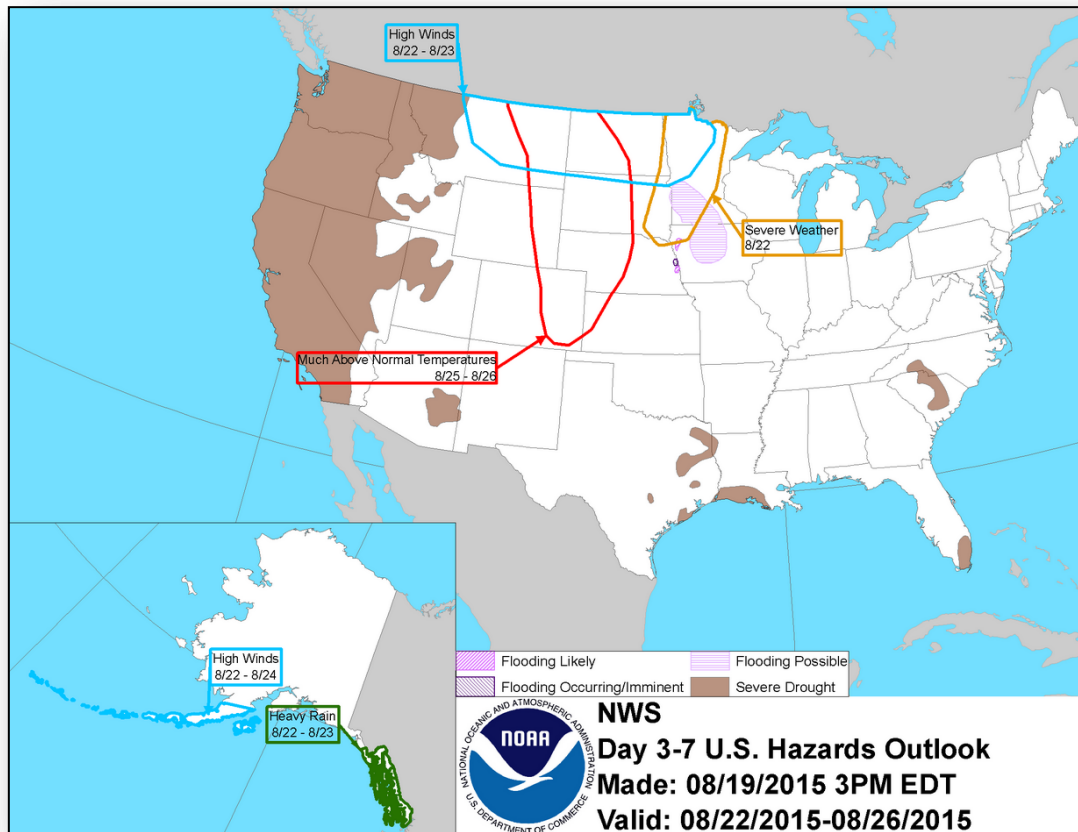


*Tomorrow*

# Hazard Outlook, August 22 – 26

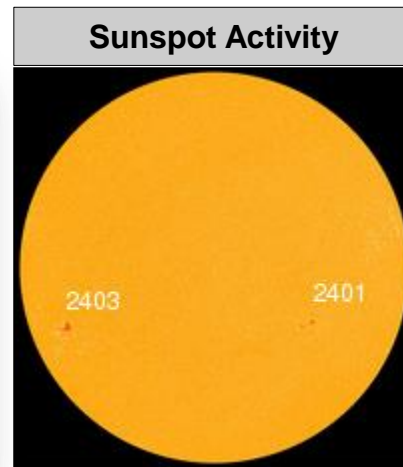
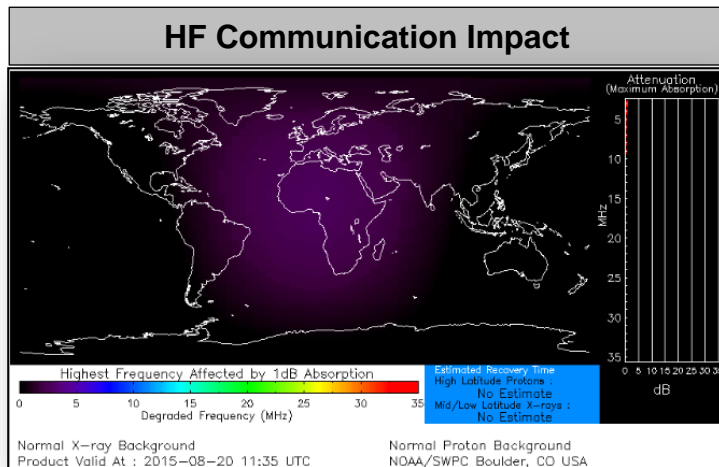


FEMA



# Space Weather

	Past 24 Hours	Current	Next 24 Hours
Space Weather Activity:	None	None	None
• Geomagnetic Storms	None	None	None
• Solar Radiation Storms	None	None	None
• Radio Blackouts	None	None	None



# FEMA Readiness – Deployable Teams /Assets



Deployable Teams/Assets									
Resource	Status	Total	FMC Available		Partially Available	Not Available	Detailed, Deployed, Activated	Comments	Rating Criterion
FCO		35	11	31%	0	1	23		OFDC Readiness: FCO   Green   Yellow   Red Type 1   3+   2   1 Type 2   4+   3   2 Type 3   4   3   2 FDRC   3   2   1
FDRC		9	6	67%	0	0	5		
US&R		28	27	96%	0	1	0	NM-TF1 (Red) – Personnel shortages	<ul style="list-style-type: none"> <li>• Green = Available/FMC</li> <li>• Yellow = Available/PMC</li> <li>• Red = Out-of-Service</li> <li>• Blue = Assigned/Deployed</li> </ul>
National IMAT		3	3	100%	0	0	0		<ul style="list-style-type: none"> <li>• Green: 3 avail</li> <li>• Yellow: 1-2 avail</li> <li>• Red: 0 avail (<i>Individual N-IMAT red if 50% of Section Chiefs and/or Team Leader is unavailable for deployment.</i>)</li> </ul>
Regional IMAT		13	4	31%	0	0	9	<u>Deployed:</u> RI to NH/MA Aug 6 - TBD (training but FMC) RIV (Team 1) deployed to KY RV to RVI supporting severe weather/flooding RVI (Team 1 & 2) to TX & personnel to OK RVII deployed to MO RVIII (Team 1) deployed to SD & CO RIX (Teams 1 & 2) deployed to CNMI <b>RX IMAT will deploy to RX RRCC</b>	<ul style="list-style-type: none"> <li>• Green: 7 or more avail</li> <li>• Yellow: 4 - 6 teams available</li> <li>• Red: &gt; 8 teams deployed/unavailable</li> </ul> <i>R-IMAT also red if TL Ops/Log Chief is unavailable &amp; has no qualified replacement</i>
MCOV		59	46	78%	0	12	1	1 unit in TX	<ul style="list-style-type: none"> <li>• Green = 80 – 100% avail</li> <li>• Yellow = 60 – 79% avail</li> <li>• Red = 59% or below avail</li> <li>• Readiness remains 95%</li> </ul>

# FEMA Readiness – National/Regional Teams



National/Regional Teams									
Resource	Status	Total	FMC Available		Partially Available	Not Available	Status	Comments	Rating Criterion
NWC		5	5	100%	0	0	Not Activated		• Green = FMC • Yellow = PMC • Red = NMC
NRCC		2	344	89%	0	44	Not Activated		
HLT		1	N/A	N/A	0	0	Activated		
DEST							Not Activated		
RRCCs		10	10	100%	0	0	Not Activated		
RWCs/MOCs		10	10	100%	0	0	Not Activated		



# FEMA

**FEMA's mission is to support our citizens and first responders to ensure that as a nation we work together to build, sustain, and improve our capability to prepare for, protect against, respond to, recover from, and mitigate all hazards.**