

The Disaster Center is dedicated to the idea that disaster mitigation is cost effective and individuals pursuing their own interest are the greatest potential force for disaster reduction.

Please consider making a small donation to the Disaster Center



When disaster mitigation is cost effective, we are on the road to bringing disasters to an end.



# **FEMA**

## **Daily Operations Briefing**

**Sunday, August 23, 2015**

**8:30 a.m. EDT**

# Significant Activity: August 22-23



**Significant Events:** Wildfires in the Northwest

## **Tropical Activity:**

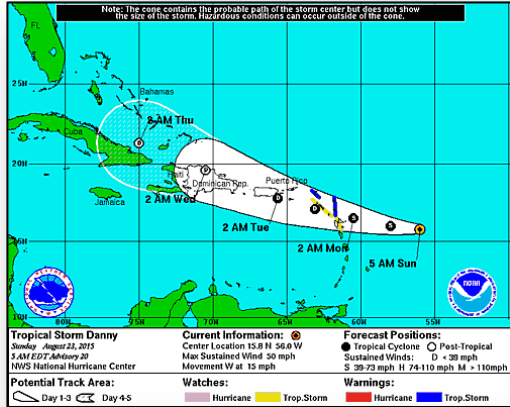
- Atlantic: Tropical Storm Danny; Disturbance 1 (Low 0%); Disturbance 2 (Medium 50%); Disturbance 3 (Low 10%)
- Eastern Pacific: Disturbance 1 (Low 20%); Disturbance 2 (Low 10%)
- Central Pacific: Tropical Depression Kilo & Tropical Storm Loke
- Western Pacific: No significant activity affecting US territories or interests

## **Significant Weather:**

- Flash flooding – Central/Southern Plains into Lower/Middle Mississippi Valley
- Red Flag Warnings – WA & OR
- Elevated Fire Weather – None
- Space weather: Past 24 hours: Moderate G2 geomagnetic storms & R1 radio blackouts observed; Next 24 hours: Moderate G2 geomagnetic storms & R1 radio blackouts predicted

**Declaration Activity:** none

# Atlantic – Tropical Storm Danny

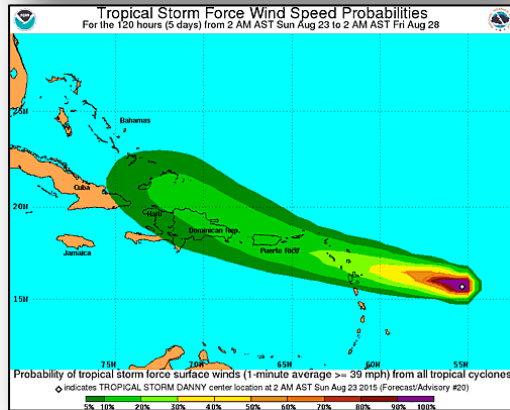


## **Tropical Storm Danny:** (Advisory 20A as of 8:00 a.m. EDT)

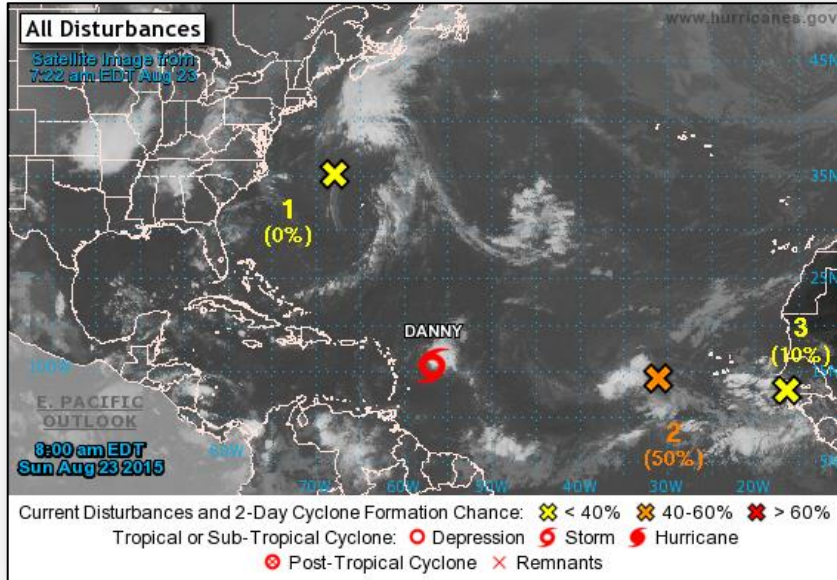
- Located 360 miles E of Guadeloupe
- Moving W at 15 mph
- General motion expected to continue through tonight; a turn WNW forecast on Monday
- Maximum sustained winds of 50 mph with higher gusts
- Additional slow weakening forecast during next 48 hours
- Tropical storm-force winds extend outward up to 60 miles

## **Preparations:**

- FEMA Region II:
  - IMAT Team A (Type II) deploying to USVI
  - IMAT Team B (Type III) deploying select staff to USVI & PR
  - IMAT Team C (Type III) deployed to CAD, LNOs to PR EOC
  - CAD LNOs deploying to USVI
  - RRCC Enhanced Watch on Aug 24; transition to Level III on Aug 25
- FEMA HQ:
  - NWC – Enhanced Watch on Aug 24
  - ISB/FSA Charlie Team & other personnel deploying to DC Caribbean, DC Hawaii, & DC Atlanta



# 2-Day Tropical Outlook – Atlantic



## Disturbance 1: (as of 8:00 a.m. EDT)

- Located a couple hundred miles NW of Bermuda
- System is expected to continue moving N
- Tropical/subtropical development appears unlikely
- Formation chance:
  - Through 48 hours: Low (0%)
  - Through 48 hours: Low (0%)

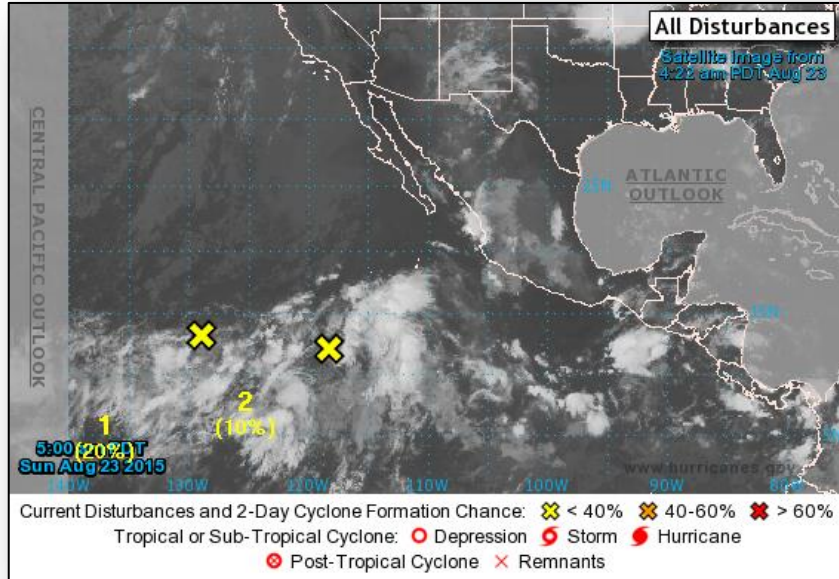
## Disturbance 2: (as of 8:00 a.m. EDT)

- Located 500 miles WSW of the Cape Verde Islands
- Quickly moving W at 20-25 mph; tropical depression could form by middle of the week
- Some development is possible during the next several days
- Formation chance:
  - Through 48 hours: Medium (50%)
  - Through 48 hours: High (70%)

## Disturbance 3: (as of 8:00 a.m. EDT)

- Tropical wave expected to move off the west coast of Africa today
- Moving W at 15-20 mph
- Environmental conditions appear conducive for development
- Formation chance:
  - Through 48 hours: Low (10%)
  - Through 48 hours: Medium (40%)

# 2-Day Tropical Outlook – Eastern Pacific



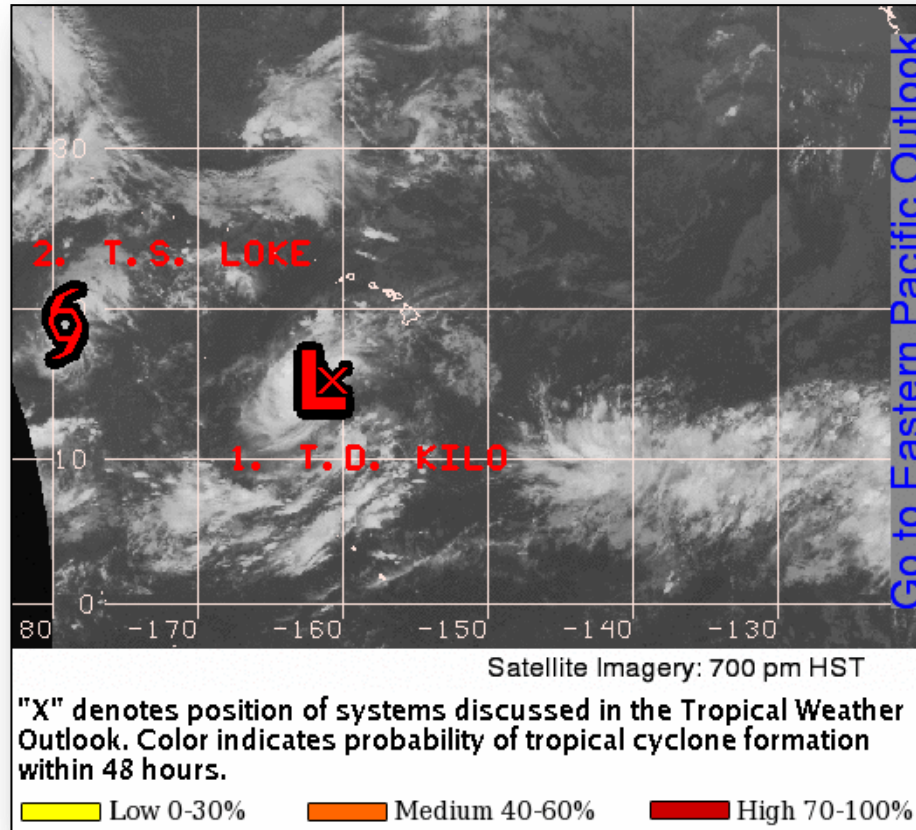
## Disturbance 1: (as of 8:00 a.m. EDT)

- Located 1,400 miles WSW of the southern tip of Baja California
- Moving WNW at 10 mph
- Slow development is possible during the next several days
- Formation chance:
  - Through 48 hours: Low (20%)
  - Through 48 hours: Medium (60%)

## Disturbance 2: (as of 8:00 a.m. EDT)

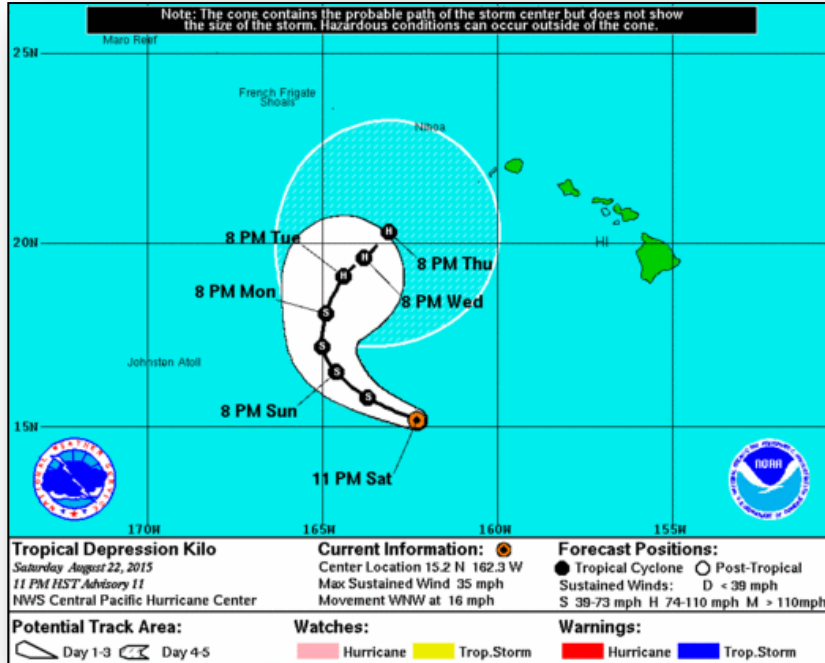
- Located 1,000 miles SW of the southern tip of Baja California
- Moving NW and then WNW at 10-15 mph
- Some slow development is possible during the next several days
- Formation chance:
  - Through 48 hours: Low (10%)
  - Through 48 hours: Low (20%)

# 2-Day Tropical Outlook – Central Pacific





# Central Pacific – Tropical Depression Kilo



## Tropical Depression Kilo: (Advisory 11 as of 5:00 a.m. EDT)

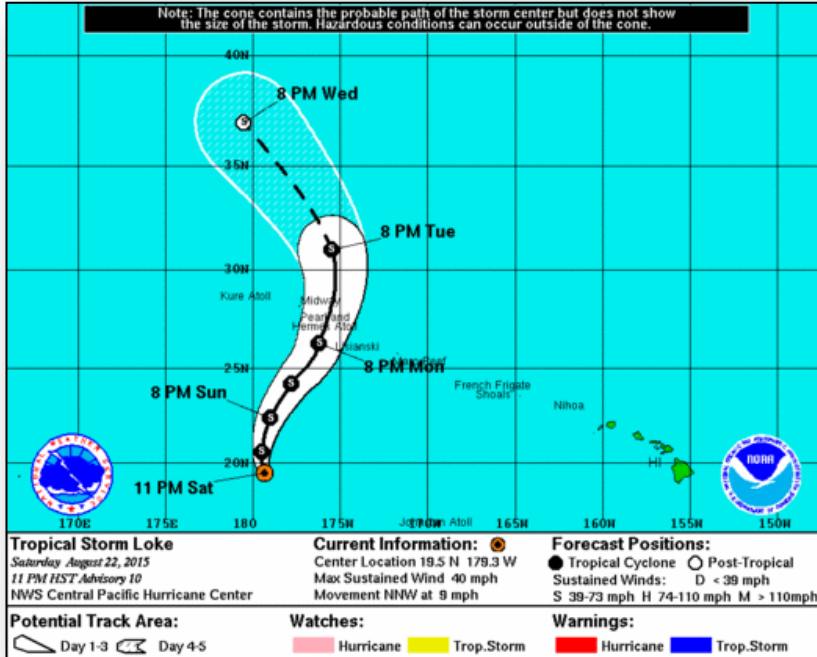
- Located 510 miles SW of Honolulu, Hawaii
- Moving WNW at 16 mph
- General motion expected to continue through Sunday followed by a gradual turn NW and decrease in forward speed
- Maximum sustained winds 35 mph
- Forecast to become a tropical storm again later
- No coastal watches/warnings in effect

## Preparations:

- FEMA Region IX:
  - RWC at Enhanced Watch (24/7)
  - 2 HLT members deployed to RWC; HLT LNO at NWS Honolulu
  - RRCC will activate to Level II with select ESFs, DoD & USCG
  - IMAT-3 (collateral team): will deploy to Oahu on Aug 24 with select ESFs DoD, & USCG
- FEMA HQ:
  - NWC – Enhanced Watch on Aug 24
  - LNO deploying to PACOM today, Aug 23



# Central Pacific – Tropical Storm Loke



## Tropical Storm Loke: (Advisory 10 as of 5:00 a.m. EDT)

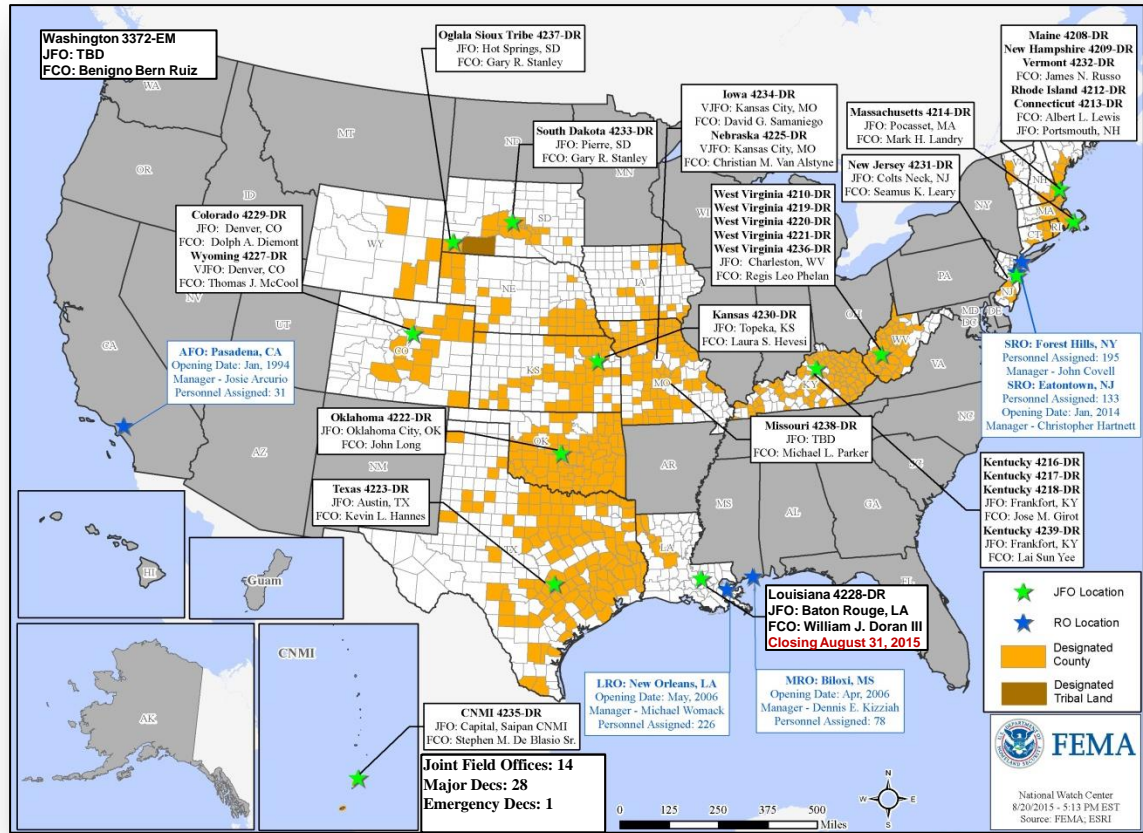
- Located 615 miles SSW of Midway Island
- Moving NNW at 9 mph
- Expected to make a gradual turn toward the N overnight, then to the NE
- Maximum sustained winds of 40 mph
- Slow intensification expected over the next couple days
- Tropical storm-force winds extend outward up to 35 miles
- No coastal watches/warnings in effect

# Wildfire Summary



Fire Name (County)	FMA# #	Acres burned	% Contained	Evacuations (Residents)	Structures Threatened	Structures Damaged/ Destroyed	Fatalities / Injuries
<b>Washington (4)</b>							
Chelan (Reach) Complex (Chelan County)	FEMA-5100-FM-WA Approved Aug 14	87,412 (+1,000)	35%	Mandatory 800	2,148 homes	0/29 homes	0/0
Kettle Complex (Ferry County) Includes Stickpin & Renner Fires	FEMA-5101-FM-WA Approved Aug 15	59,321 (+5,961)	15% (+10)	Mandatory 334	4,130 (2,600 homes)	0/2 (1 home)	0/0
Stevens County Complex (Stevens County) Consists of Carpenter Road, Marble Valley & Gold Hill fires	FEMA-5103-FM-WA Approved Aug 15	36,584 (+22,884)	15-85% (+15-85)	Mandatory 200	1,190 (890 homes)	22/60 (19 homes)	1/2
Okanogan Complex (Okanogan County) Includes North Star Fire	FEMA-5104-FM-WA Approved Aug 14 FEMA-5106-FM-WA (Twisp River Fire) Approved Aug 19	359,206 (+88,891)	2-10%	Mandatory 859	8,290 (7,140 homes)	0/51 (18 homes)	3/4
<b>Idaho (1)</b>							
Clearwater Complex (Lewis & Idaho counties)	FEMA-5099-FM-ID Approved Aug 14	45,243 (+4,930)	40%	Mandatory 400	1,670 (600 homes)	0/114 (44 homes)	0/0
<b>Oregon (2)</b>							
Canyon Creek Complex (Grant County)	FEMA-5102-FM-OR Approved Aug 15	68,545 (+6,753)	23% (+6)	Mandatory	150 homes	50 homes / 39 homes	0/2
Grizzly Bear Complex (Wallowa County)	FEMA-5107-FM-OR Approved Aug 20	61,150 (+1,999)	0%	Mandatory	470 (400 homes)	0/33 (5 homes)	0/0

# Open Field Offices as of August 23

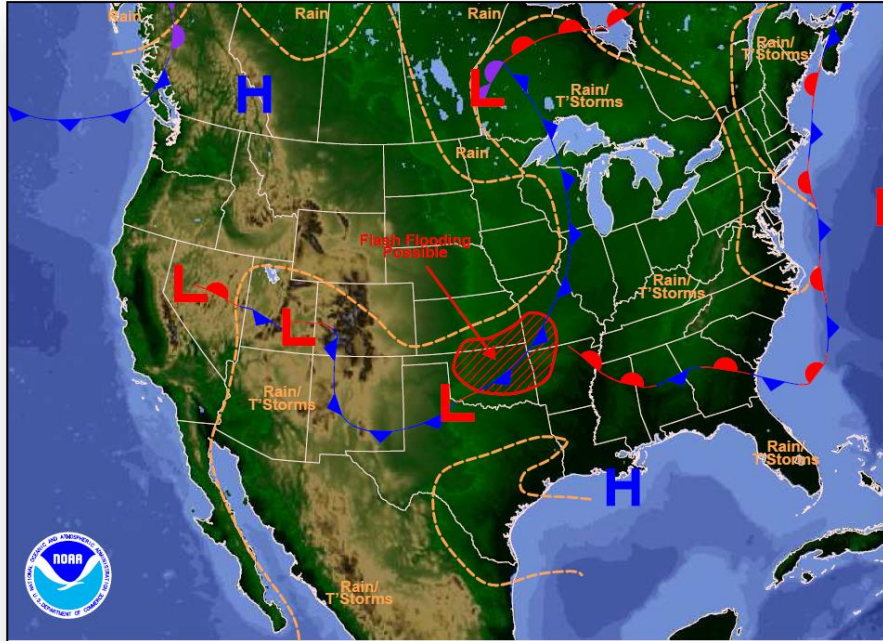


# Joint Preliminary Damage Assessments



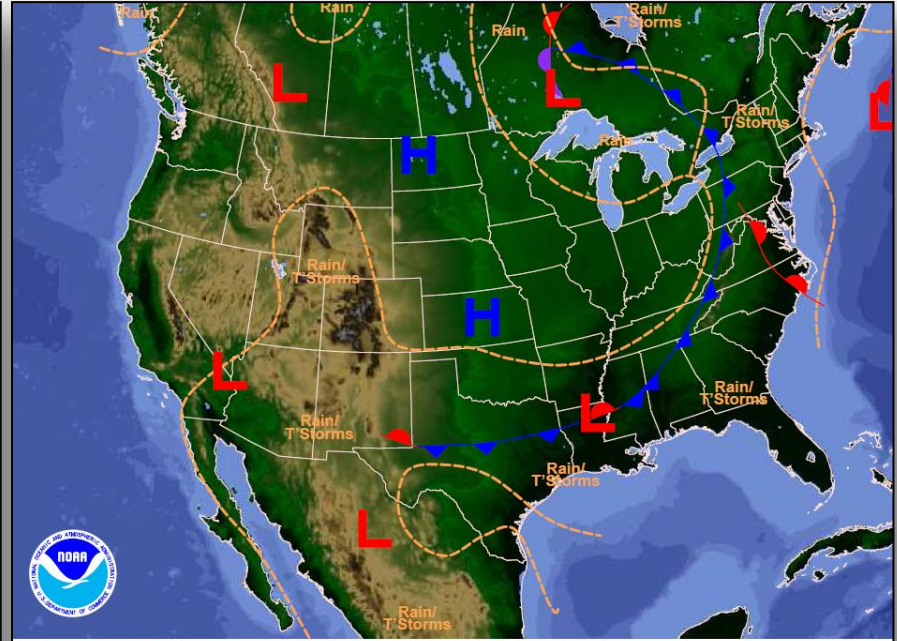
Region	State / Location	Event	I/PA	Number of Counties		Start – End
				Requested	Complete	
IV	FL	Heavy Rain & Flooding July 26, 2015 & continuing	IA	5	5	8/12 - 8/19
			PA	5	0	TBD
V	IN	Severe Storms, Tornadoes, Straight-line Winds & Flooding June 7 – July 29, 2015	PA	26	2	8/18 - TBD

# National Weather Forecast



Weather Forecast for Sun, Aug 23, 2015, issued 4:41 AM EDT  
DOC/NOAA/NWS/NCEP/Weather Prediction Center  
Prepared by Fanning based on WPC, SPC and NHC forecasts

*Today*

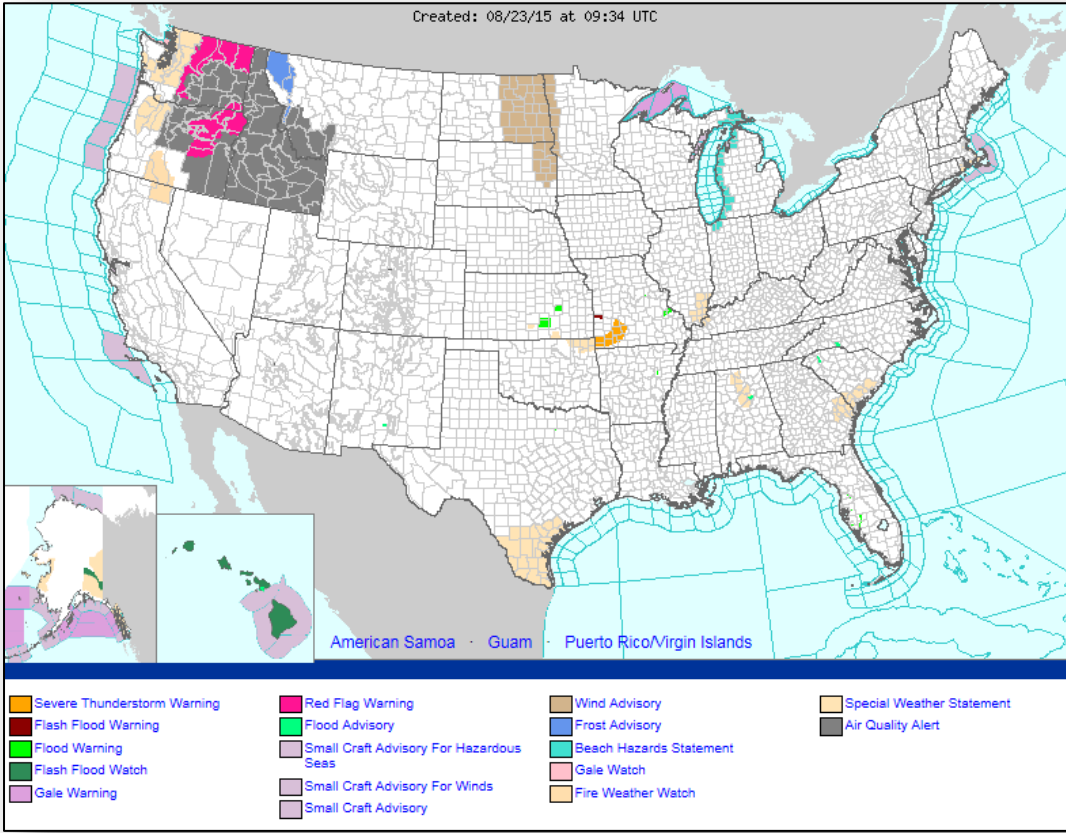


Weather Forecast for Mon, Aug 24, 2015, issued 4:44 AM EDT Sun, Aug 23, 2015  
DOC/NOAA/NWS/NCEP/Weather Prediction Center  
Prepared by Fanning based on WPC, SPC and NHC forecasts

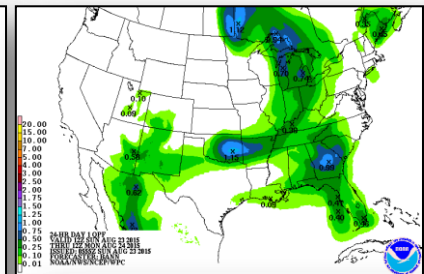
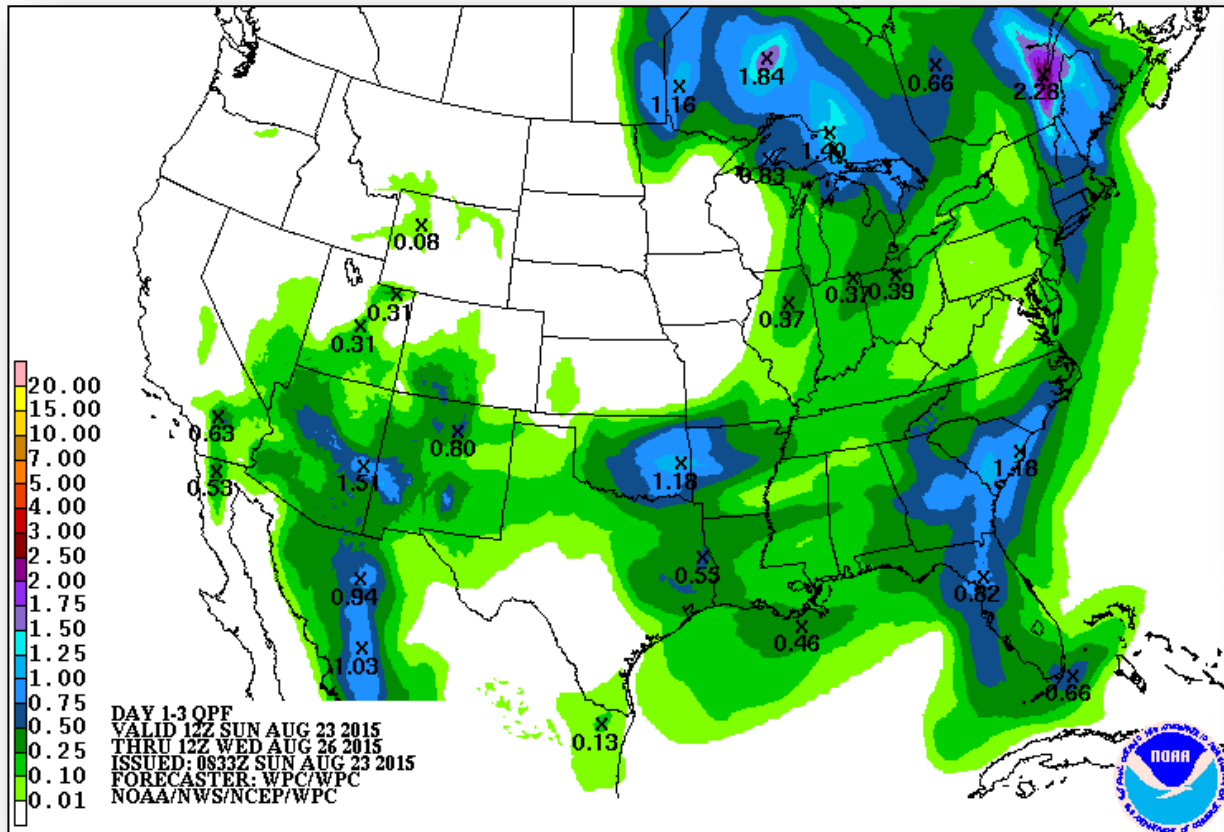
*Tomorrow*



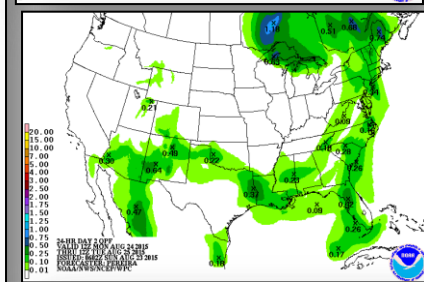
# Active Watches/Warnings



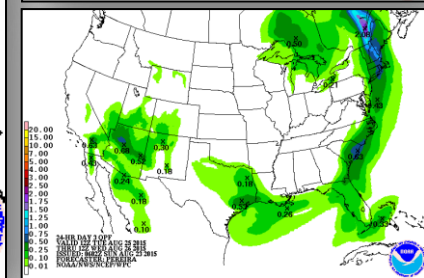
# Precipitation Forecast, 1-3 Day



Day 1



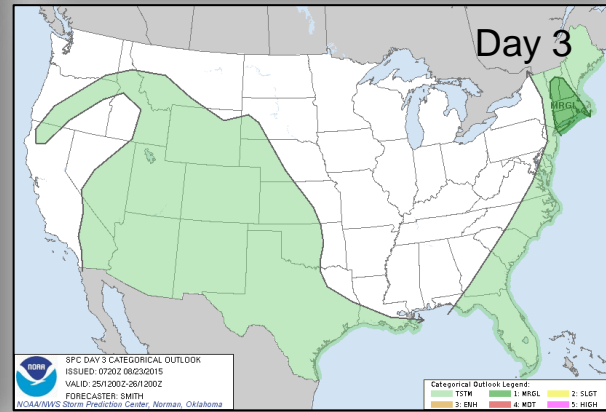
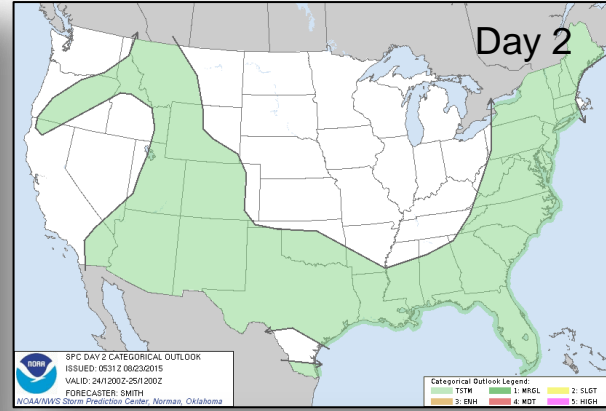
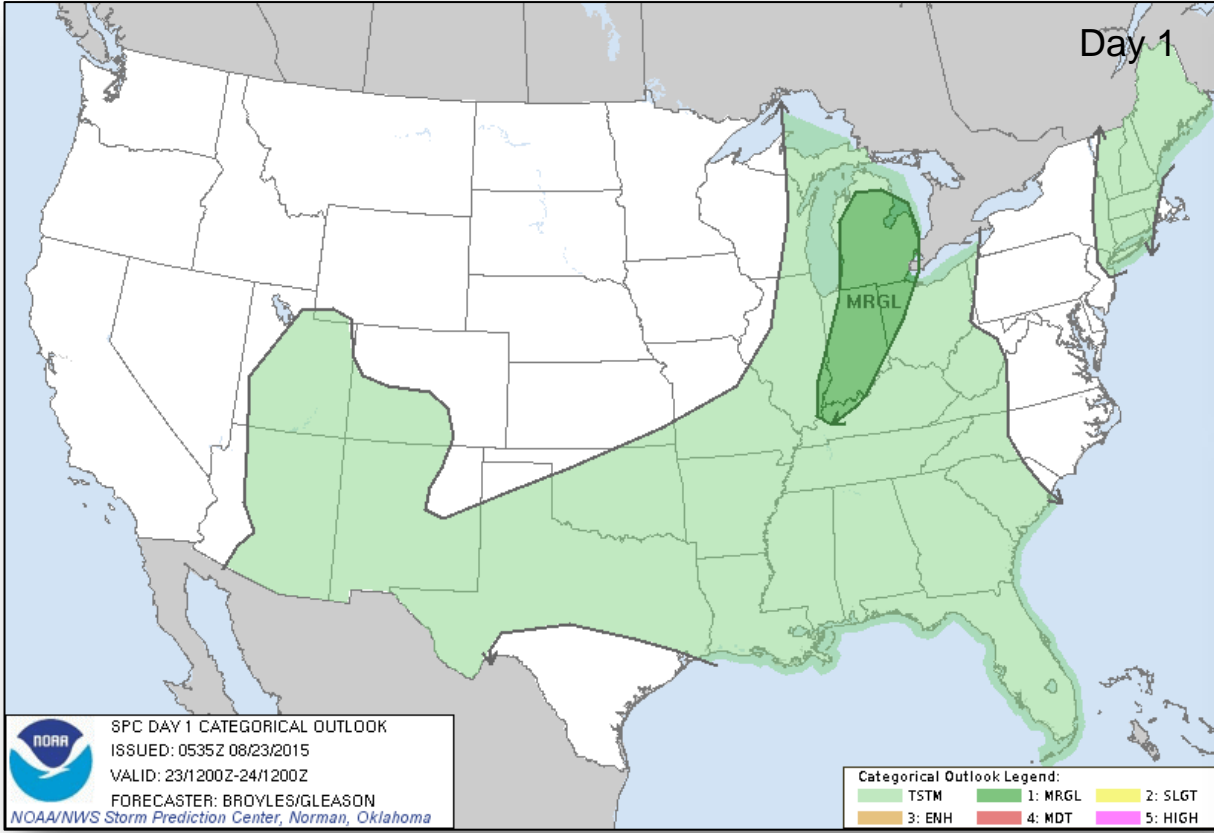
Day 2



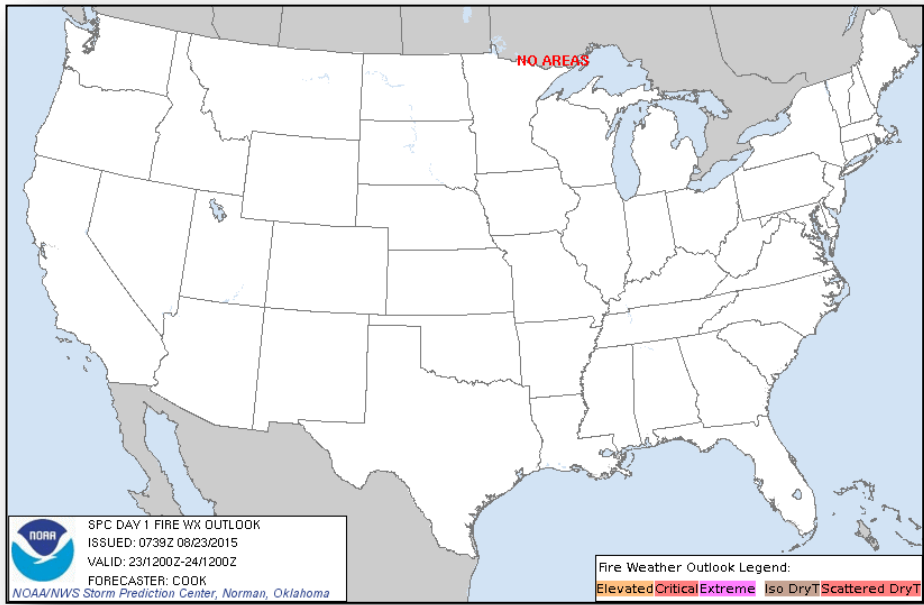
Day 3



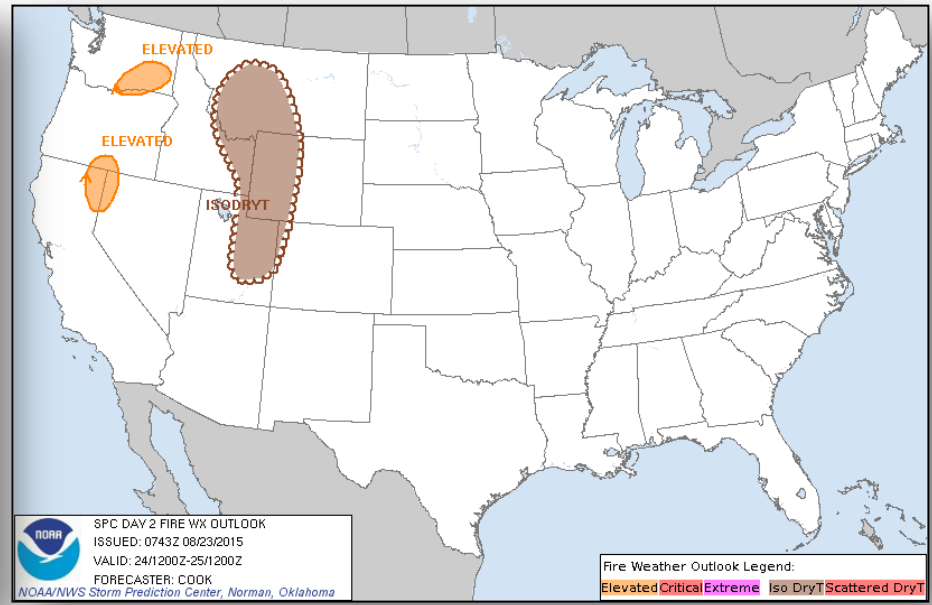
# Severe Weather Outlook, Days 1-3



# Fire Weather Outlook, Days 1-2

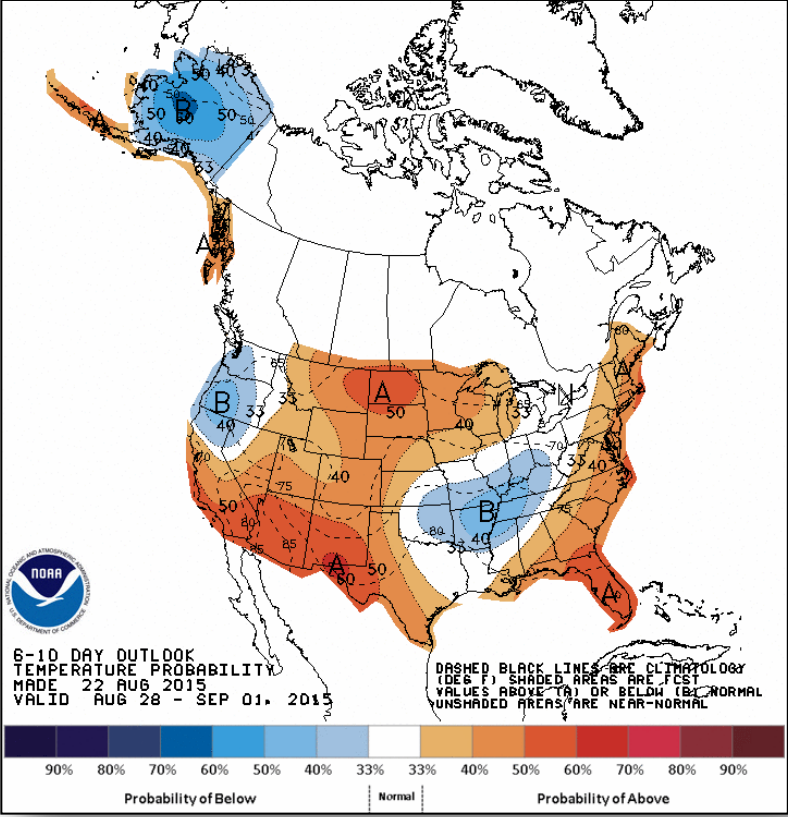


*Today*

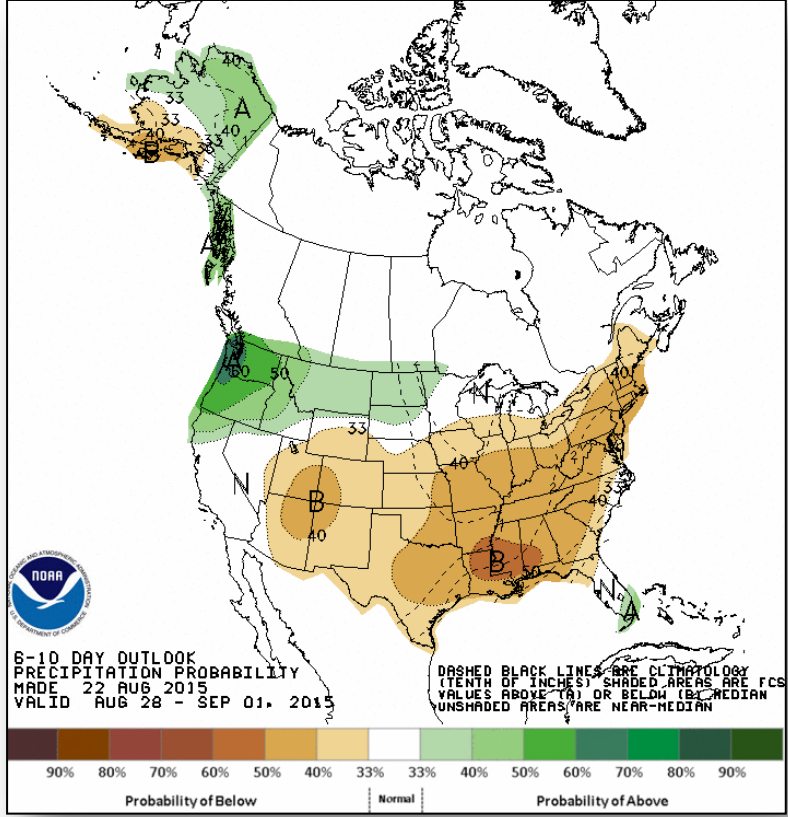


*Tomorrow*

# 6-10 Day Outlooks



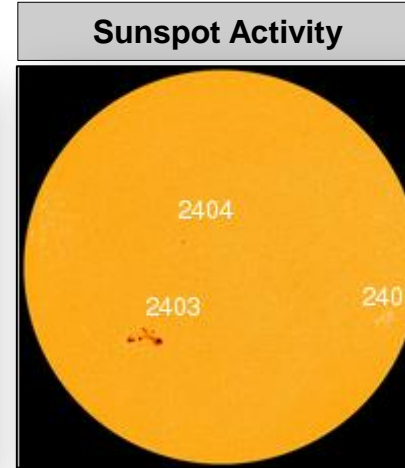
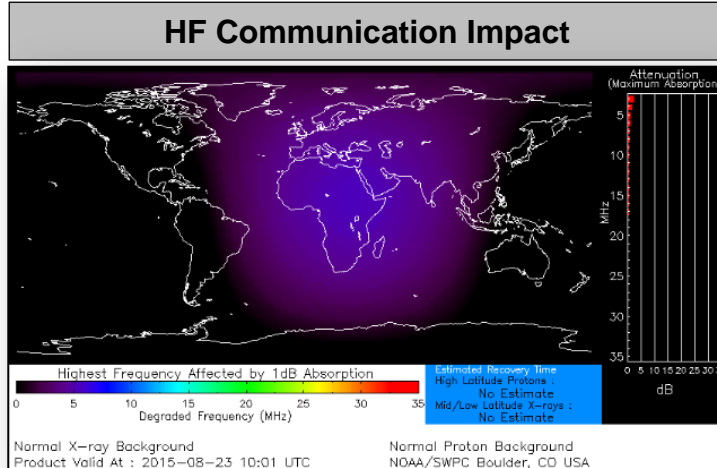
**Temperature Probability**



**Precipitation Probability**

# Space Weather

	Past 24 Hours	Current	Next 24 Hours
Space Weather Activity:	Moderate	None	Moderate
• Geomagnetic Storms	G2	None	G2
• Solar Radiation Storms	None	None	None
• Radio Blackouts	R1	None	R1



# FEMA Readiness – Deployable Teams /Assets



Deployable Teams/Assets									
Resource	Status	Total	FMC Available		Partially Available	Not Available	Detailed, Deployed, Activated	Comments	Rating Criterion
FCO	Yellow	35	9	26%	0	1	25		OFDC Readiness: FCO Green Yellow Red Type 1 3+ 2 1 Type 2 4+ 3 2 Type 3 4 3 2 FDRC 3 2 1
FDRC	Green	9	5	56%	0	0	4		
US&R	Green	28	27	96%	0	1	0	NM-TF1 (Red) – Personnel shortages	<ul style="list-style-type: none"> <li>Green = Available/FMC</li> <li>Yellow = Available/PMC</li> <li>Red = Out-of-Service</li> <li>Blue = Assigned/Deployed</li> </ul>
National IMAT	Green	3	3	100%	0	0	0		<ul style="list-style-type: none"> <li>Green: 3 avail</li> <li>Yellow: 1-2 avail</li> <li>Red: 0 avail (<i>Individual N-IMAT red if 50% of Section Chiefs and/or Team Leader is unavailable for deployment.</i>)</li> </ul>
Regional IMAT	Red	13	3	23%	0	0	10	<u>Deployed:</u> RI to NH/MA Aug 6 - TBD (training but FMC) RII (IMAT A) deploying to USVI RII Collateral Teams deploying: IMAT B select staff to USVI & PR; IMAT C to CAD with LNOs in PR RIV (Team 1) deployed to KY RV deployed to RVI RVI (Team 1 & 2) deployed to TX RVII deployed to MO RVIII (Team 1) deployed to SD & CO RIX (Teams 1 & 2) deployed to CNMI RX (Team 1) deployed to WA	<ul style="list-style-type: none"> <li>Green: 7 or more avail</li> <li>Yellow: 4 - 6 teams available</li> <li>Red: &gt; 8 teams deployed/unavailable</li> </ul> <i>R-IMAT also red if TL Ops/Log Chief is unavailable &amp; has no qualified replacement</i>
MCOV	Yellow	59	46	78%	0	12	1	1 unit in TX	<ul style="list-style-type: none"> <li>Green = 80 – 100% avail</li> <li>Yellow = 60 – 79% avail</li> <li>Red = 59% or below avail</li> <li>Readiness remains 95%</li> </ul>





# FEMA

**FEMA's mission is to support our citizens and first responders to ensure that as a nation we work together to build, sustain, and improve our capability to prepare for, protect against, respond to, recover from, and mitigate all hazards.**