

The Disaster Center is dedicated to the idea that disaster mitigation is cost effective and individuals pursuing their own interest are the greatest potential force for disaster reduction.

Please consider making a small donation to the Disaster Center



When disaster mitigation is cost effective, we are on the road to bringing disasters to an end.



FEMA

Daily Operations Briefing

Tuesday, August 25, 2015

8:30 a.m. EDT

Significant Activity: August 24-25



Significant Events: Wildfires in the Northwest

Tropical Activity:

- Atlantic: Tropical: Tropical Storm Erika;
- Eastern Pacific: TD Twelve-E; Disturbance 1 (Low 40%)
- Central Pacific: Tropical Depression Kilo & Hurricane Loke
- Western Pacific: No significant activity affecting US territories or interests

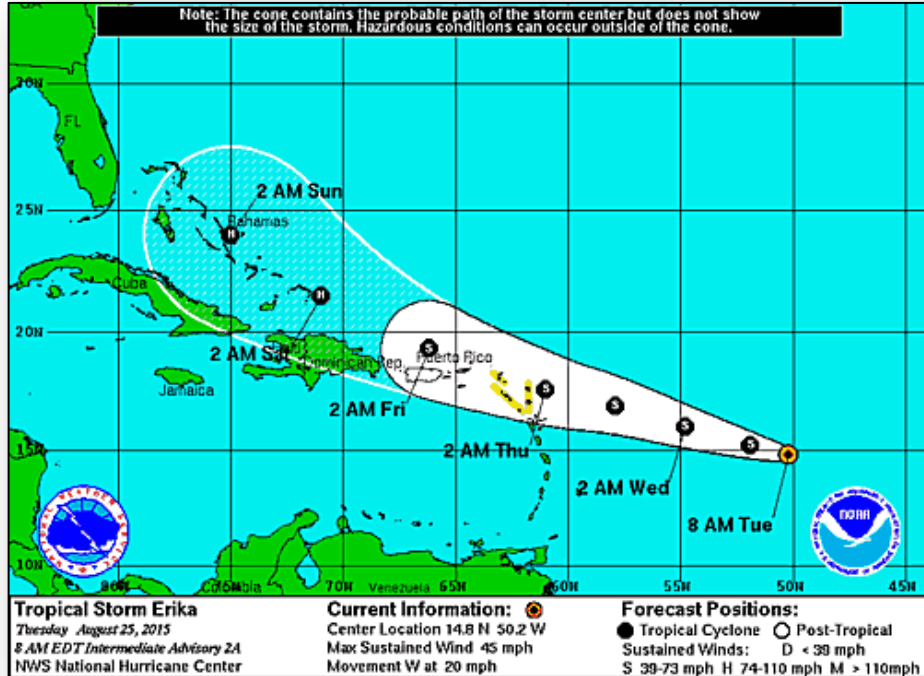
Significant Weather:

- Showers and Thunderstorms – Western U.S.
- Red Flag Warnings – WA & ID
- Elevated Fire Weather – CA, OR & NV
- Isolated Dry Thunderstorms – Northern/Central Rockies to Central Great Basin
- Space weather: Past 24 hours: Minor R1 radio blackouts observed; Next 24 hours: Minor R1 radio blackouts predicted

Declaration Activity:

- Amendment No. 2 to FEMA-4235-DR-CNMI
- FMAG for Goodell Fire, WA

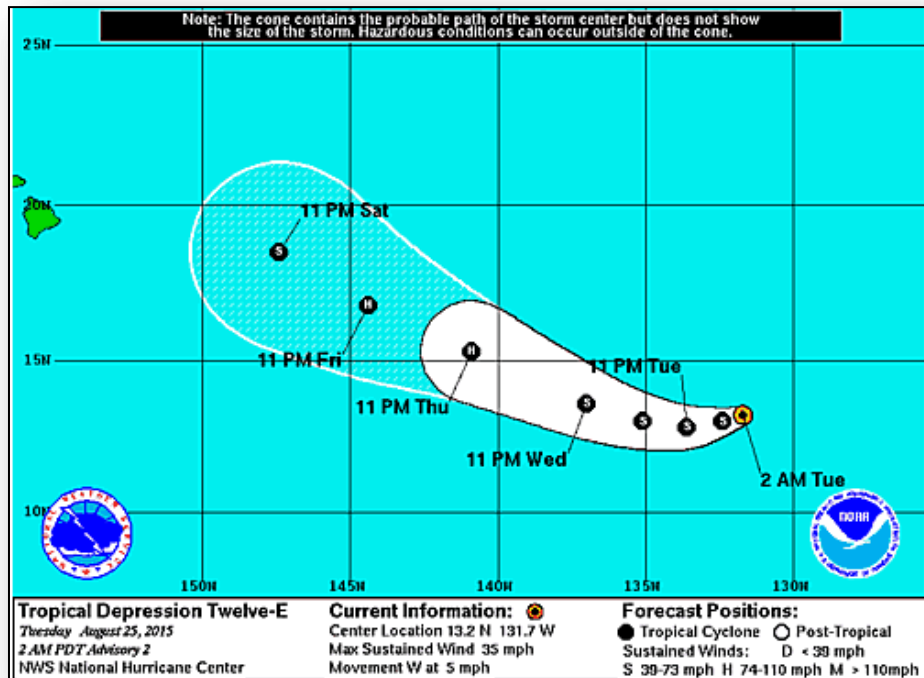
Atlantic – Tropical Storm Erika



Advisory #2: (As of 8:00 a.m. EDT)

- Located 1,100 miles SE of Puerto Rico
- Moving W at 20 mph
- Maximum sustained winds of 45 mph with higher gusts
- Tropical storm force winds extend outward up to 80 miles from the center
- Some strengthening is forecast during next 48 hours

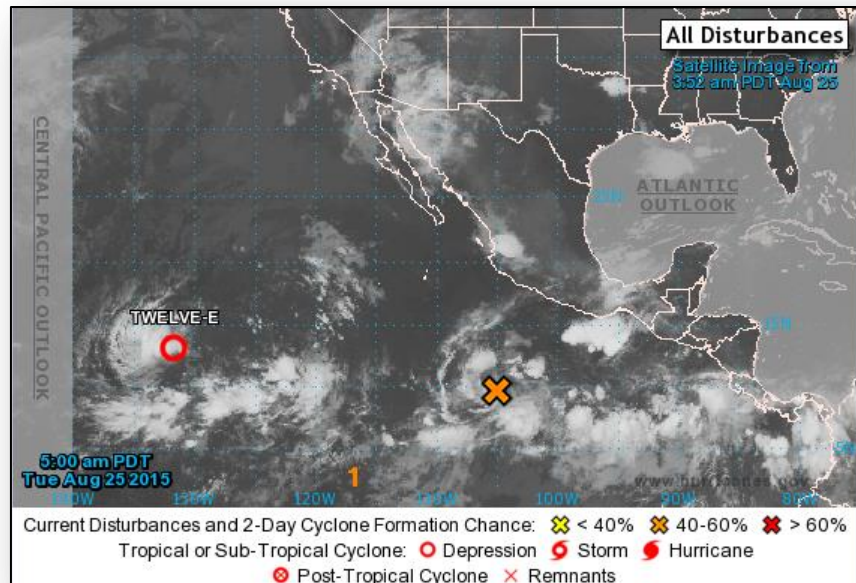
Eastern Pacific – TD Twelve-E



Advisory #2: (as of 5:00 a.m. EDT)

- Located 1,610 miles ESE of Hilo, HI
- Moving W at 5 mph
- Gradual strengthening is forecast during the next 48 hours
- Maximum sustained winds of 35 mph with higher gusts
- Becoming a tropical storm today

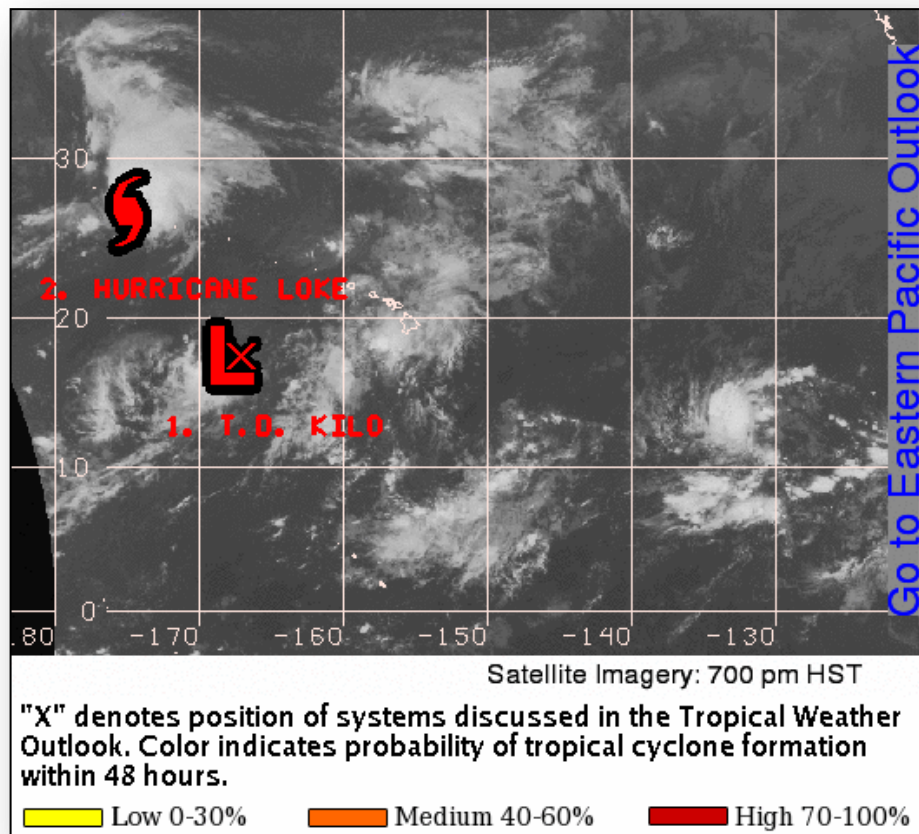
2-Day Tropical Outlook – Eastern Pacific



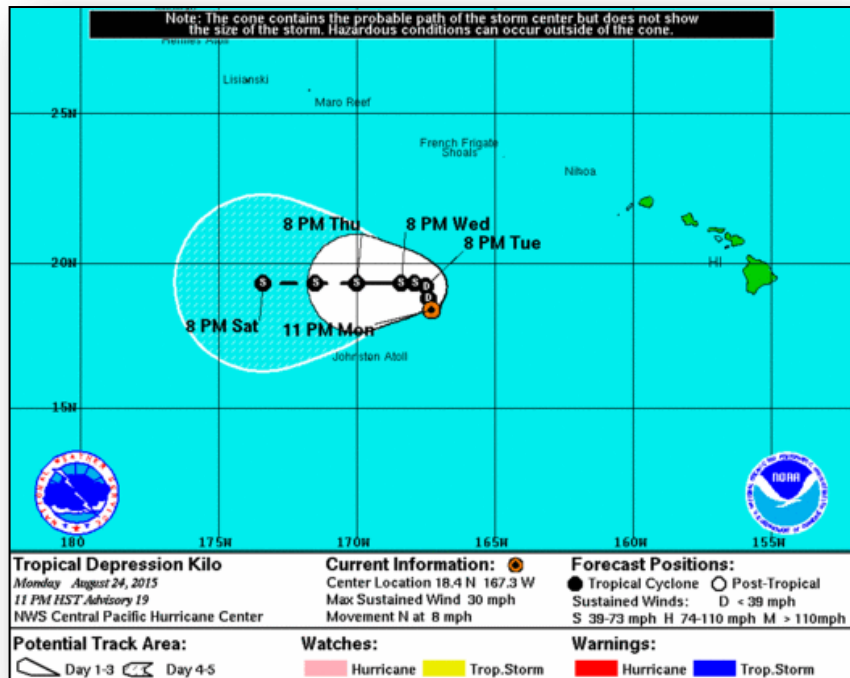
Disturbance 1: (as of 5:00 a.m. EDT)

- Located several hundred miles S of south coast of southwestern Mexico
- Moving WNW at 10 to 15 mph
- Environmental conditions expected to be conducive for development
- Formation chance:
 - Through 48 hours: Low (40%)
 - Through 5 days: High (80%)

2-Day Tropical Outlook – Central Pacific



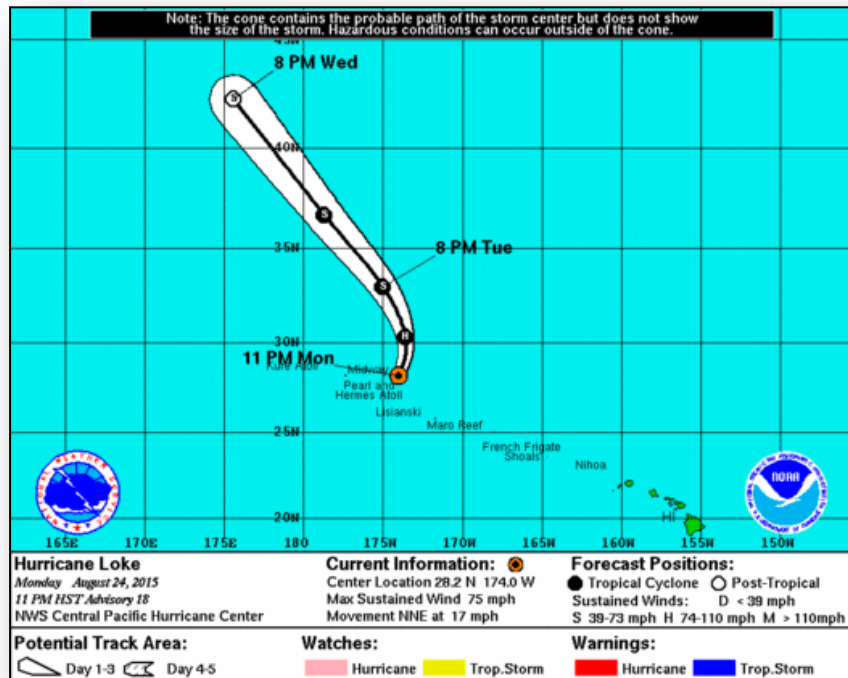
Central Pacific – Tropical Depression Kilo



Advisory #19: (As of 5:00 a.m. EDT)

- Located 640 miles WSW of Honolulu, HI
- Moving N at 8 mph
- Gradual slowing in forward speed
- Maximum sustained winds of 30 mph
- Forecast to intensify to over next today through Wednesday night

Central Pacific – Hurricane Loke



Advisory #18: (As of 5:00 a.m. EDT)

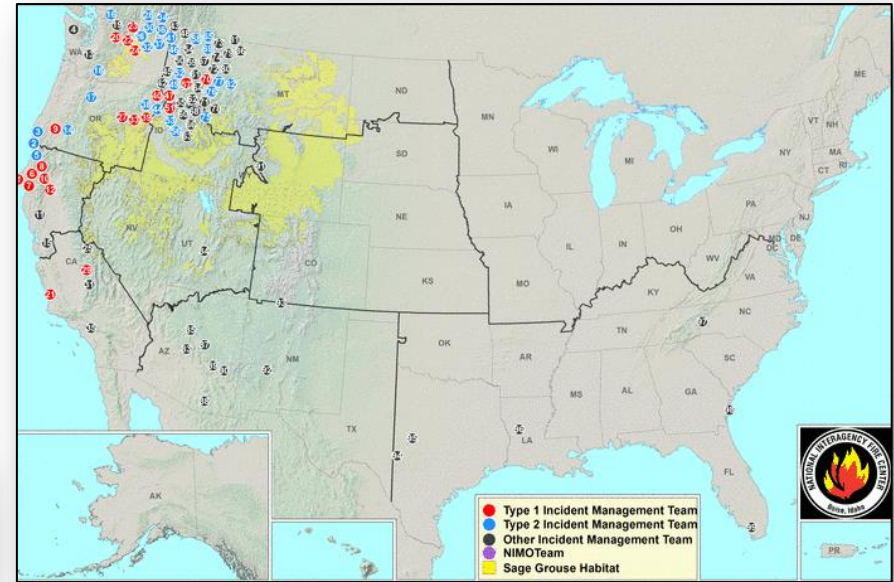
- Located 205 miles E of Midway Island
- Moving NNE at 17 mph
- Motion is expected to continue today with a turn toward to NW
- Maximum sustained winds 75 mph with higher gusts
- Slow weakening today and Wednesday; likely to transition to extra-tropical storm
- Hurricane force winds extend outward up to 15 miles

National Fire Activity – August 25, 2015



National Preparedness Level: 5

- Initial attack activity: Lights – 185 New Fires
- New Large Fires/Contained/Uncontained: 4/0/78
- NIMOs committed: 0
- Type 1 IMTs committed: 18
- Type 2 IMTs committed: 31



① HORSE	① CUESTA	① KANIKSU COMPLEX	① LARKIN COMPLEX	① FAMILY PEAK COMPLEX
② GASQUET COMPLEX	② FIRST CREEK	② LAST INCH	② RED RIVER COMPLEX	② SUCKER CREEK
③ COLLIER BUTTE	③ OKANOGAN COMPLEX	③ PARKER RIDGE	③ ELEVENMILE	③ RATTLESNAKE
④ PARADISE	④ CHELAN COMPLEX	④ TEEPE SPRINGS	④ LOCHSA SOUTH COMPLEX	④ SOLITUDE
⑤ NICKOWITZ	⑤ WALKER	⑤ SNOW PEAK COMPLEX	⑤ NORTHEAST KOOTENAI	⑤ MINER CREEK
⑥ ROUTE COMPLEX	⑥ NORTH STAR	⑥ CLARK FORK COMPLEX	⑥ MIDDLE FORK COMPLEX	⑥ GENERAL
⑦ MAD RIVER COMPLEX	⑦ CANYON CREEK COMPLEX	⑦ ELK CITY COMPLEX	⑦ MELTON 1	⑦ OJO BLANCO
⑧ RIVER COMPLEX	⑧ KETTLE COMPLEX	⑧ TEEPE MOUNTAIN	⑧ DILLINGER	⑧ LEO KOUT
⑨ STOUTS CREEK	⑨ ROUGH	⑨ MOTORWAY COMPLEX	⑨ THOMPSON DIVIDE COMPLEX	⑨ CREEK
⑩ SOUTH COMPLEX	⑩ GRAVES MOUNTAIN	⑩ MARBLE CREEK	⑩ JAY PT	⑩ LITTLE BOB LAKE
⑪ JERUSALEM	⑪ CABIN	⑪ SELWAY COMPLEX	⑪ WILDERNESS COMPLEX	⑪ RED CANYON
⑫ FORK COMPLEX	⑫ CARPENTER ROAD	⑫ GRIZZLY COMPLEX	⑫ BEAR CREEK FIRE	⑫ NAVAJO RIVER
⑬ ALDER LAKE	⑬ ELDOorado	⑬ RAPID	⑬ REYNOLDS	⑬ LOG CABIN
⑭ NATIONAL CREEK COMPLEX	⑭ EDOLVILLE COMPLEX	⑭ BERRAY MOUNTAIN	⑭ BEAR CREEK	⑭ LAFAYETTE
⑮ TESLA	⑮ CABIN	⑮ CRATER	⑮ BOBCAT	⑮ BALD KNOB
⑯ UPPER SKAGIT COMPLEX	⑯ GOLD HILL	⑯ COUGAR	⑯ SCOTCHMANS GULCH	⑯ BUCKWHEAT
⑰ COUNTY LINE 2	⑰ MARBLE VALLEY	⑰ MUNICIPAL COMPLEX	⑰ MORRELL COMPLEX	⑰ RISELO
⑱ COUGAR CREEK	⑱ EAGLE	⑱ GOAT ROCK COMPLEX	⑱ BEAR LAKE	
⑲ GOODE	⑲ WINDY RIDGE	⑲ PRETTY	⑲ TRAIL CREEK	
⑳ WOLVERINE	⑳ CLEARWATER COMPLEX	⑳ CAMPBELLS	⑳ YOUNGS CREEK	

Preparedness Level V

Geographic Areas are experiencing major incidents which have the potential to exhaust all agency fire resources. 80 percent of Type 1 and 2 IMTs and crews are committed, as well as the majority of other national resources.

Goodell Fire – WA



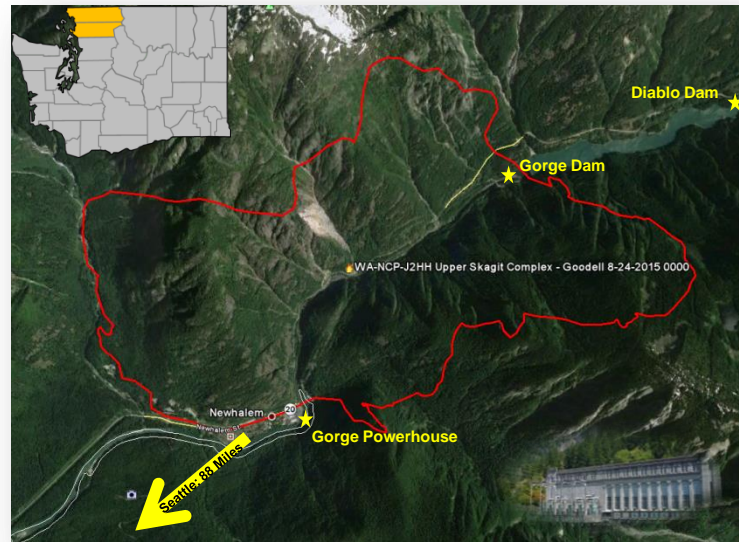
Fire Name (County)	Location	Acres burned	% Contained	FMAG	Evacuations	Structures Lost / Threatened	Fatalities / Injuries
Goodell (Skagit & Whatcom counties)	Near towns of Newhalem & Diablo, WA	4,523	0%	FEMA-5109-FM-WA	Mandatory/200	0/60 homes	0/0

Current Situation:

- Part of the Upper Skagit Complex Fire that began August 10
- Potential impacts to critical public infrastructure:
 - Gorge, Diablo & Ross Dams including the Newhalem Powerhouse supplying 40% of power to City of Seattle (Seattle City Light)
 - Threatening transmission and fiber optic lines associated with dam safety
 - Threatening 60 primary residences, local & state maintenance & office facilities
- Mandatory evacuation of approx. 200 people

Response:

- WA EOC is at Full Activation (Level III)
- IMAT-1 Deployed to State EOC; FCO Bern Ruiz



Gorge Powerhouse in Newhalem, WA
Owned and Operated by Seattle City Light

Wildfire Summary



FEMA

Fire Name (County)	FMAF #	Acres burned	% Contained	Evacuations (Residents)	Structures Threatened	Structures Damaged/ Destroyed	Fatalities / Injuries
Washington (5)							
Chelan (Reach) Complex (Chelan County)	FEMA-5100-FM-WA Approved Aug 14	88,104 (+506)	40%	Mandatory/ Voluntary 800	2,130 (1,330 homes)	0/44 (21 homes)	0/6 (+6)
Kettle Complex (Ferry County)	FEMA-5101-FM-WA Approved Aug 15 FEMA-5108-FM-WA (Renner Fire) Approved Aug 21	57,019 (+811)	16%	Mandatory 334	4,130 (2,600 homes)	0/2 (1 home)	0/0
Stevens County Complex (Stevens County)	FEMA-5103-FM-WA Approved Aug 15	40,779 (+1,934)	20% (Carpenter Fire) 95% (others)	Mandatory 200	1,190 (890 homes)	22/60 (19 homes)	1/2
Okanogan Complex (Okanogan County)	FEMA-5104-FM-WA Approved Aug 14 FEMA-5106-FM-WA (Twisp River Fire) Approved Aug 19	408,339 (+16,769)	5-15%	Mandatory 864 (+5)	8,290 (7,140 homes)	0/51 (18 homes)	3/4
Goodell Fire (Skagit & Whatcom counties)	FEMA-5109-FM-WA Approved Aug 24	4,523	0%	Mandatory 200	0/60	0/0	0/0

Wildfire Summary



Fire Name (County)	FMAF #	Acres burned	% Contained	Evacuations (Residents)	Structures Threatened	Structures Damaged/ Destroyed	Fatalities / Injuries
Idaho (1)							
Clearwater Complex <i>FINAL</i> (Lewis & Idaho counties)	FEMA-5099-FM-ID Approved Aug 14	47,260 (+1,287)	50%	Voluntary 400	145 (-1,521) 70 (-530 homes)	0/114 (44 homes)	0/0
Oregon (2)							
Canyon Creek Complex (Grant County)	FEMA-5102-FM-OR Approved Aug 15	73,060 (+3,289)	37%	Mandatory 50	50 (-250) homes	50 homes / 39 homes	0/2
Grizzly Bear Complex (Wallowa County)	FEMA-5107-FM-OR Approved Aug 20	59,201 (-1,950)	5%	Mandatory	470 (400 homes)	0/33 (5 homes)	0/0

2015 Fire Season Update



- Fire season started relatively slowly
- The Southeastern U.S. had a mild fire season for the third year in a row
- Alaska had one of the most active fire seasons on record - over 5 million acres burned
- Fire activity in the Western U.S. began increasing in June and continues to increase
- On August 13, the National Wildfire Preparedness Level was raised to PL-5, the highest level
- Forest Service has experienced seven line-of-duty fatalities to date, including five in this most recent fire siege



2015 Fire Season Update – Today



- More than 25,000 personnel are currently supporting firefighting activities on 76 significant wildfires
- Largest number of personnel in 15 years
- Hundreds of additional personnel are providing “initial attack” capability for new fires
- Nationally, 42,735 fires have burned 7,573,139 acres
- The 10 year average is 52,041 fires, 5,316,857 acres
- ESF #4 has been activated by FEMA Region X to provide enhanced situational awareness on the fires in Washington
- Forest Service has been mission assigned to manage a mobilization center with structural fire resources in Spokane, supporting the State of Washington



Military and International Support



- U.S. Forest Service has a long-standing agreement with Department of Defense for firefighting support under DSCA. DOD is providing:
- Soldiers who are trained and equipped to serve as wildland firefighters
- Six C-130s equipped with Modular Airborne Fire Fighting Systems (MAFFS) to serve as large airtankers
- Firefighters and aircraft from Canada have been mobilized
- Firefighters have been mobilized from Australia and New Zealand



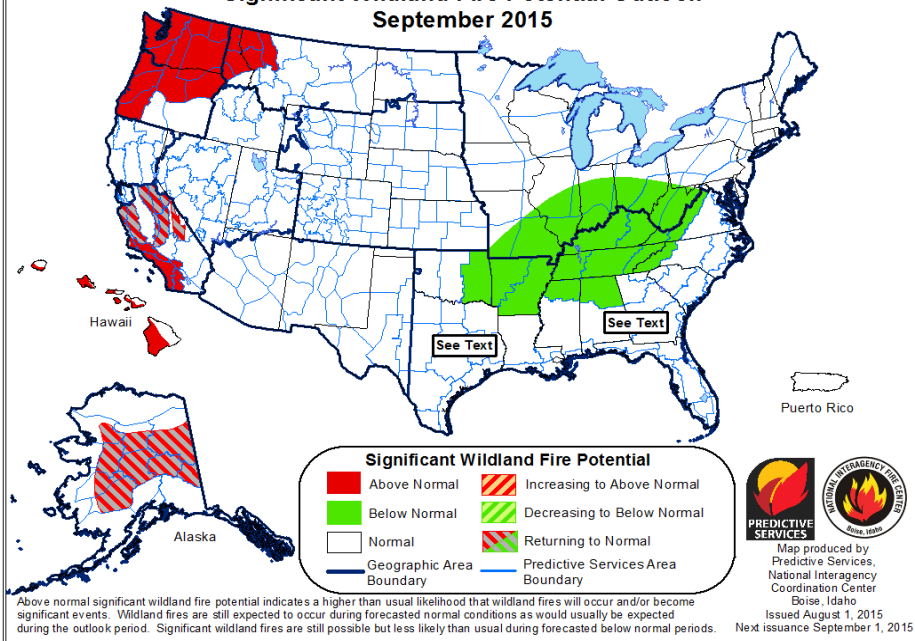
U.S. Forest Service Fire & Aviation Management



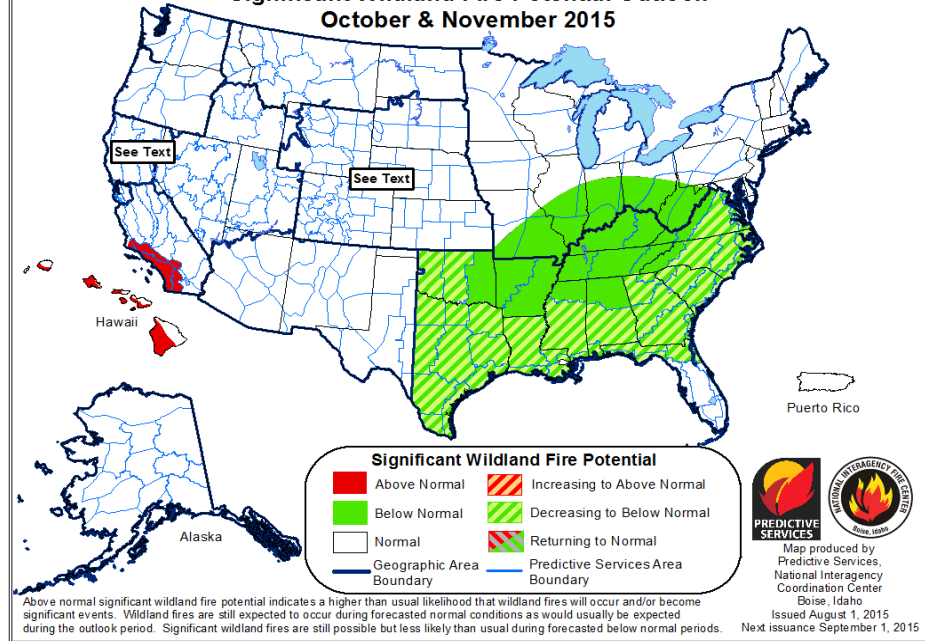
Extended Fire Outlook



**Significant Wildland Fire Potential Outlook
September 2015**



**Significant Wildland Fire Potential Outlook
October & November 2015**

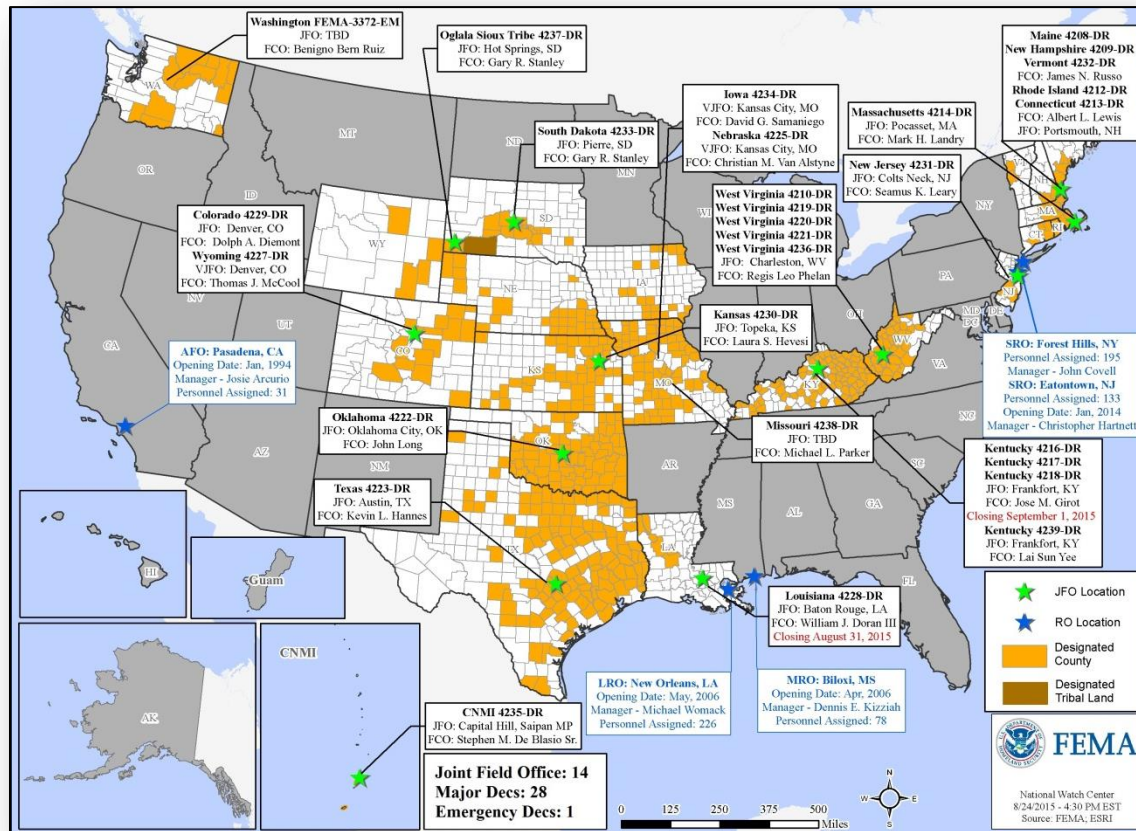


Disaster Amendments



Amendment	Effective Date	Action
Amendment No. 2 to FEMA-4235-DR-CNMI	August 24, 2015	Amends cost sharing arrangements regarding Federal funds under Stafford Act

Open Field Offices as of August 25

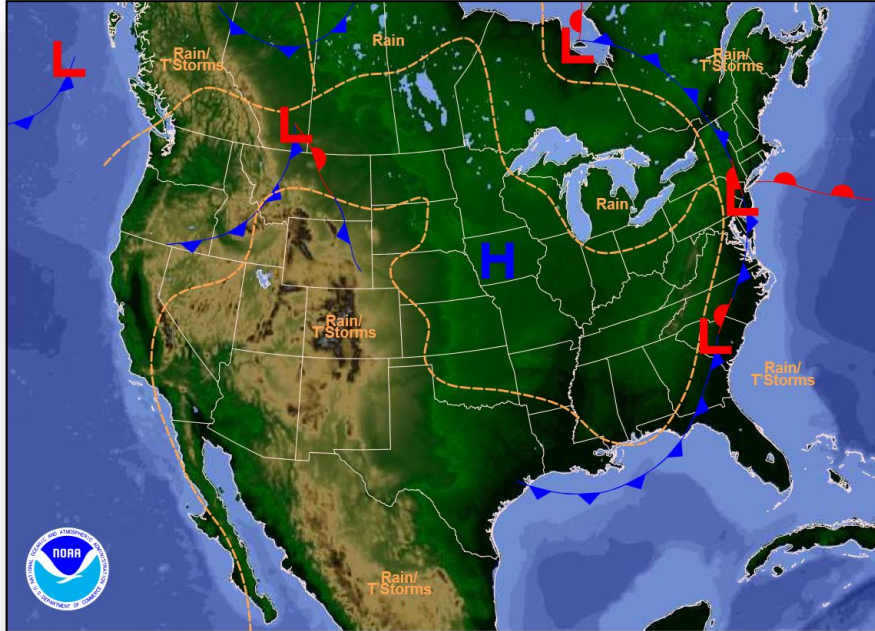


Joint Preliminary Damage Assessments



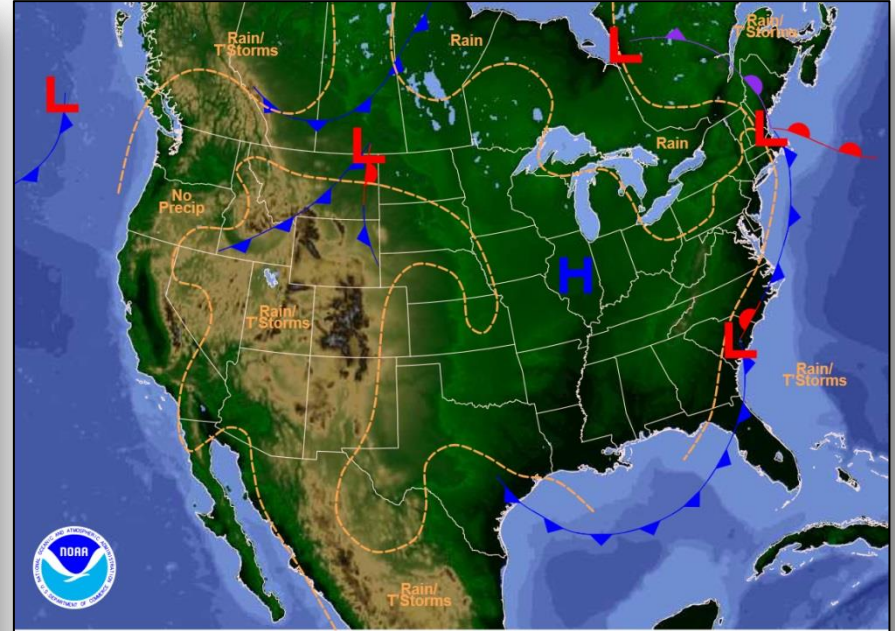
Region	State / Location	Event	I/PA	Number of Counties		Start – End
				Requested	Complete	
IV	FL	Heavy Rain & Flooding July 26, 2015 & continuing	IA	5	5	8/12 - 8/19
			PA	5	0	TBD
V	IN	Severe Storms, Tornadoes, Straight-line Winds & Flooding June 7 – July 29, 2015	PA	26	15 (+13)	8/18 - TBD

National Weather Forecast



Weather Forecast for Tue, Aug 25, 2015, issued 4:28 AM EDT
DOC/NOAA/NWS/NCEP/Weather Prediction Center
Prepared by McCreynolds based on WPC, SPC and NHC forecasts

Today



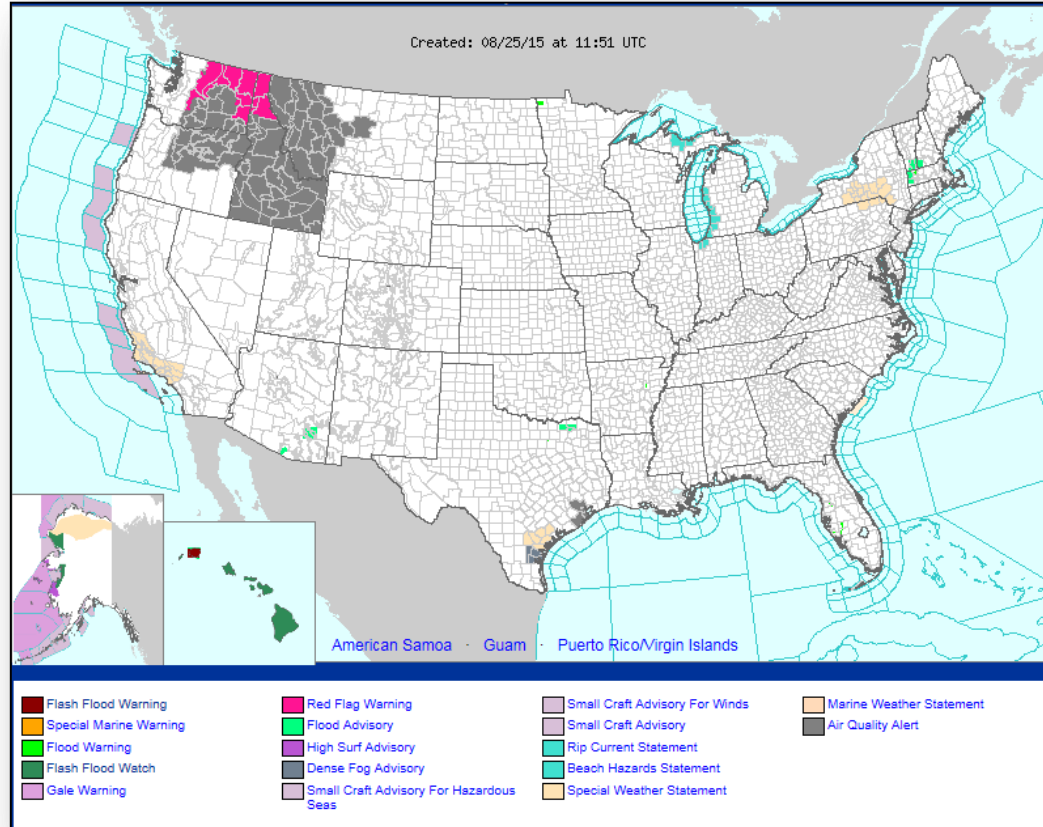
Weather Forecast for Wed, Aug 26, 2015, issued 4:35 AM EDT Tue, Aug 25, 2015
DOC/NOAA/NWS/NCEP/Weather Prediction Center
Prepared by McCreynolds based on WPC, SPC and NHC forecasts

Tomorrow

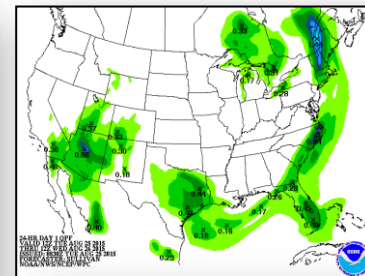
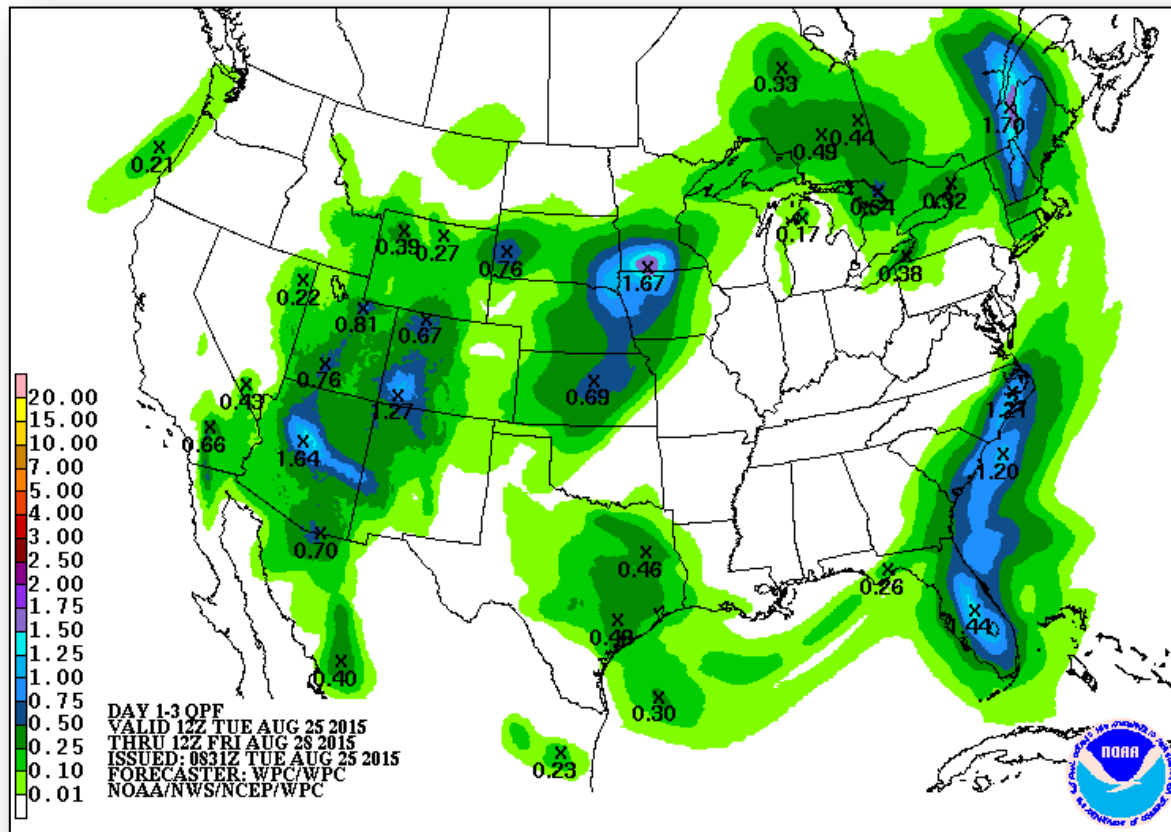
Active Watches/Warnings



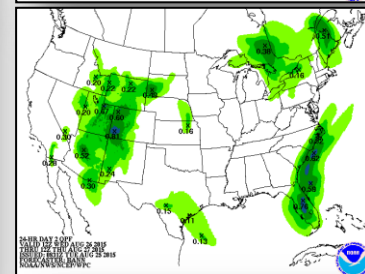
FEMA



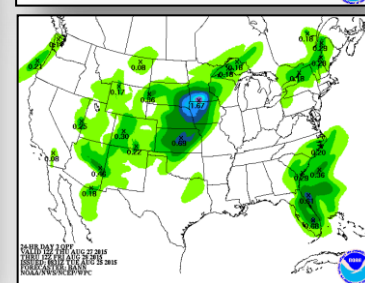
Precipitation Forecast, 1-3 Day



Day 1

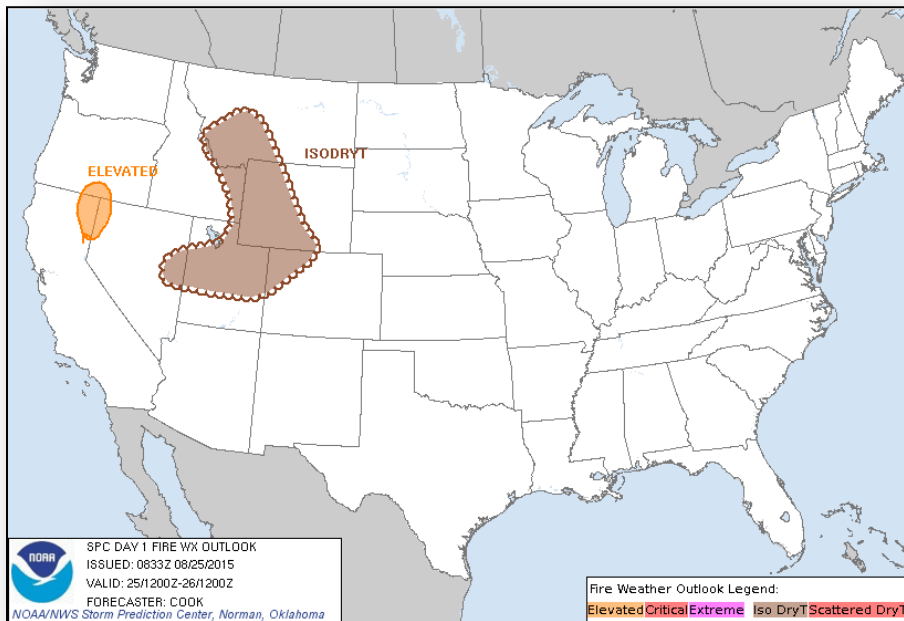


Day 2

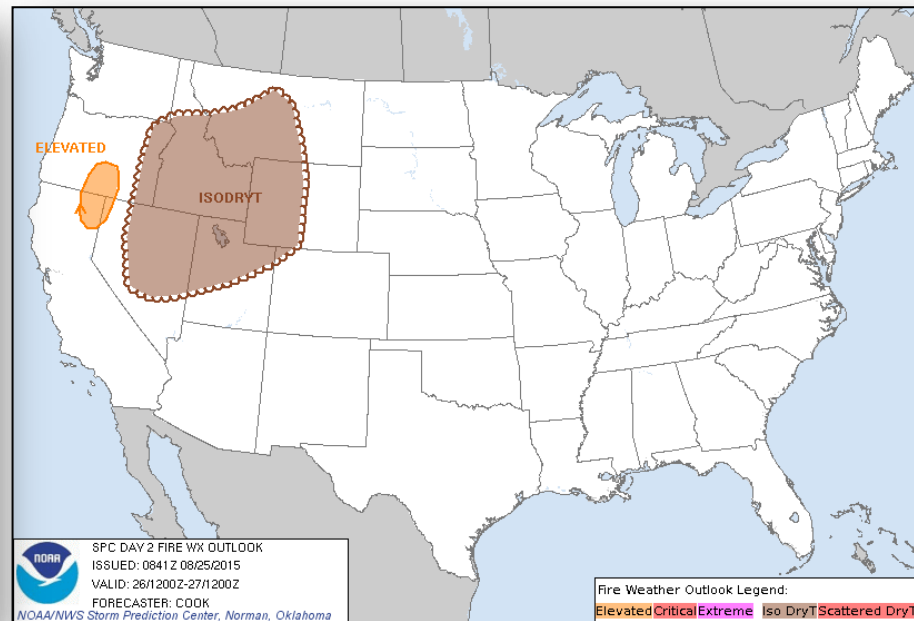


Day 3

Fire Weather Outlook, Days 1-2

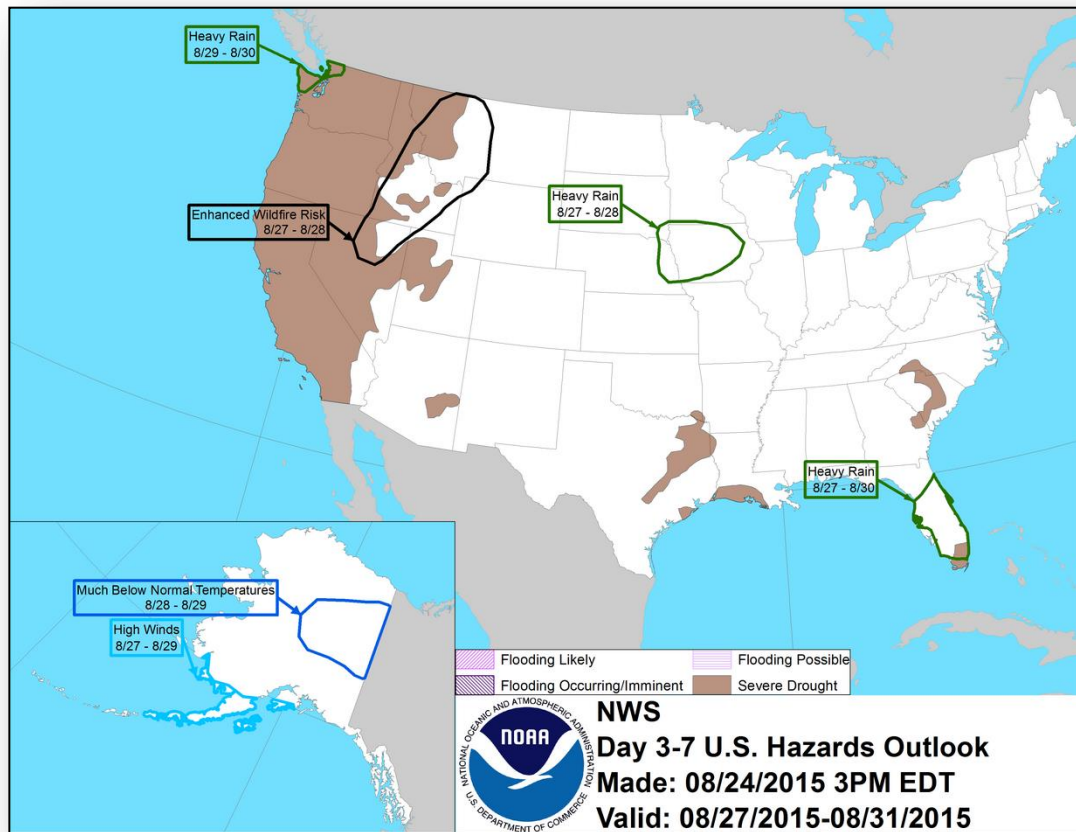


Today



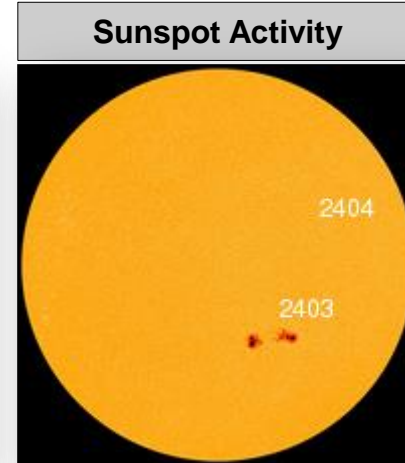
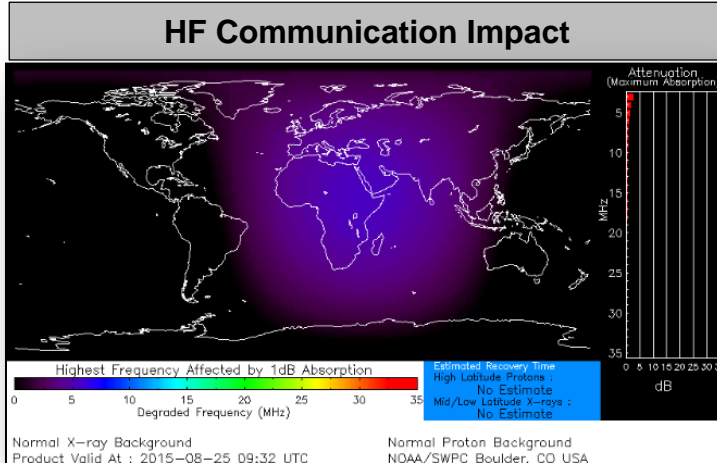
Tomorrow

Hazard Outlook, August 27-31



Space Weather

	Past 24 Hours	Current	Next 24 Hours
Space Weather Activity:	Minor	None	Minor
• Geomagnetic Storms	None	None	None
• Solar Radiation Storms	None	None	None
• Radio Blackouts	R1	None	R1

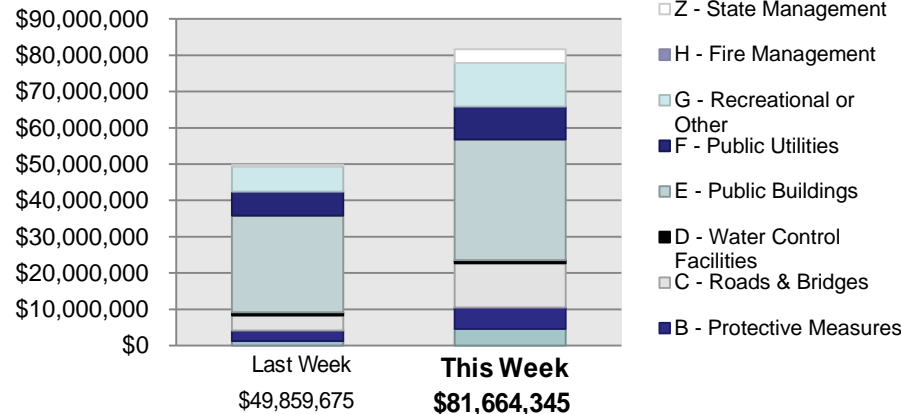


Public Assistance Grant Program



PA Project Worksheets Obligated in past week, as of 8/24/2015 at 1400 EDT										
PA Category	Emergency Work		Permanent Work							Total
	A - Debris Removal	B - Protective Measures	C - Roads & Bridges	D - Water Control Facilities	E - Public Buildings	F - Public Utilities	G - Recreational or Other	H - Fire Management	Z - State Management	
Number Of PWS Obligated	49	109	87	8	43	30	20	0	27	373
Federal Share Obligated	\$4,547,728	\$5,924,445	\$12,226,456	\$811,149	\$33,268,167	\$9,118,917	\$11,990,583	\$0	\$3,776,899	\$81,664,345

Public Assistance Obligated per Category
In the Past 2 Weeks – 8/10/2015 through 8/24/2015



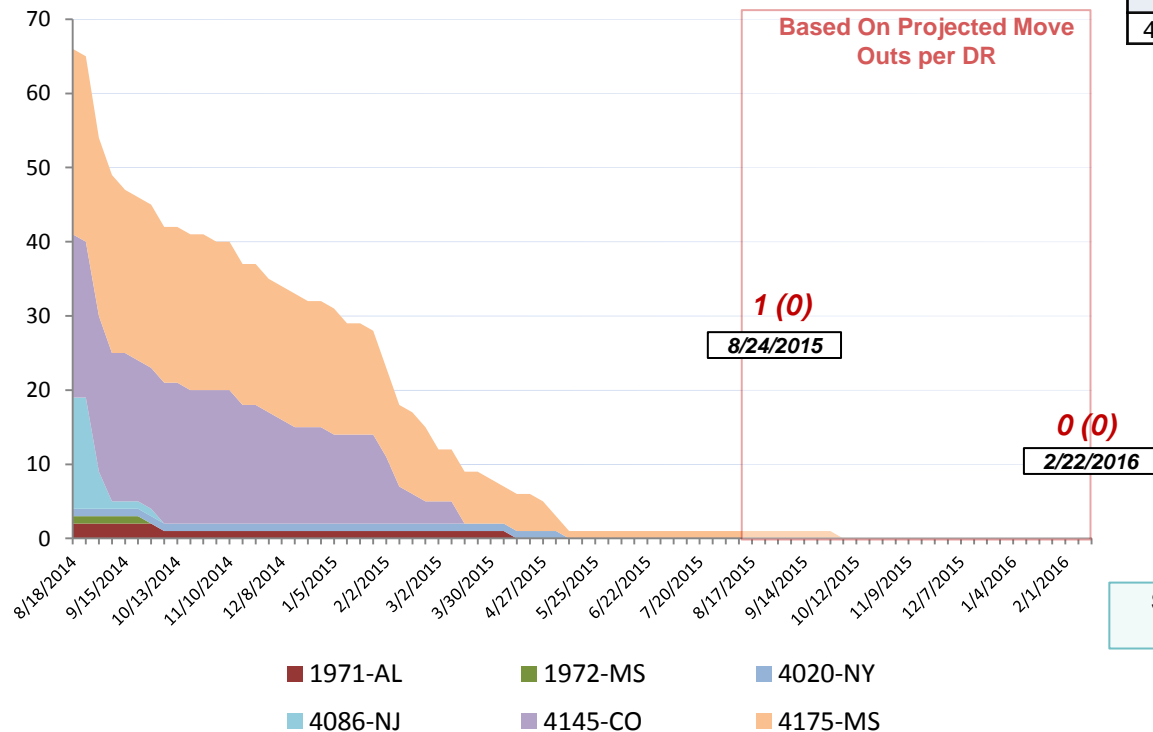
PA Highlights

- On 8/19 a Category E grant for over \$11.9 million was obligated to the New York Office of Management and Budget, for repairs to I.S. 211K – John Wilson Intermediate School as a result of DR-4085, Hurricane Sandy

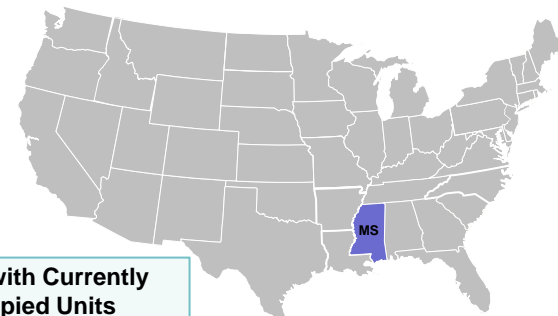
Direct Housing



Total Households in FEMA Direct Housing per State
 Past Year per Week, 8/18/2014 – 8/24/2015, Projected to 2/22/2016
 There are currently **1** Households Occupying **1** Temporary Units



DR	IA Declaration Date	Program End Date	Current # of Households in Direct Housing (Weekly Change)
4175-MS	04/30/2014	10/30/2015	1 (0)

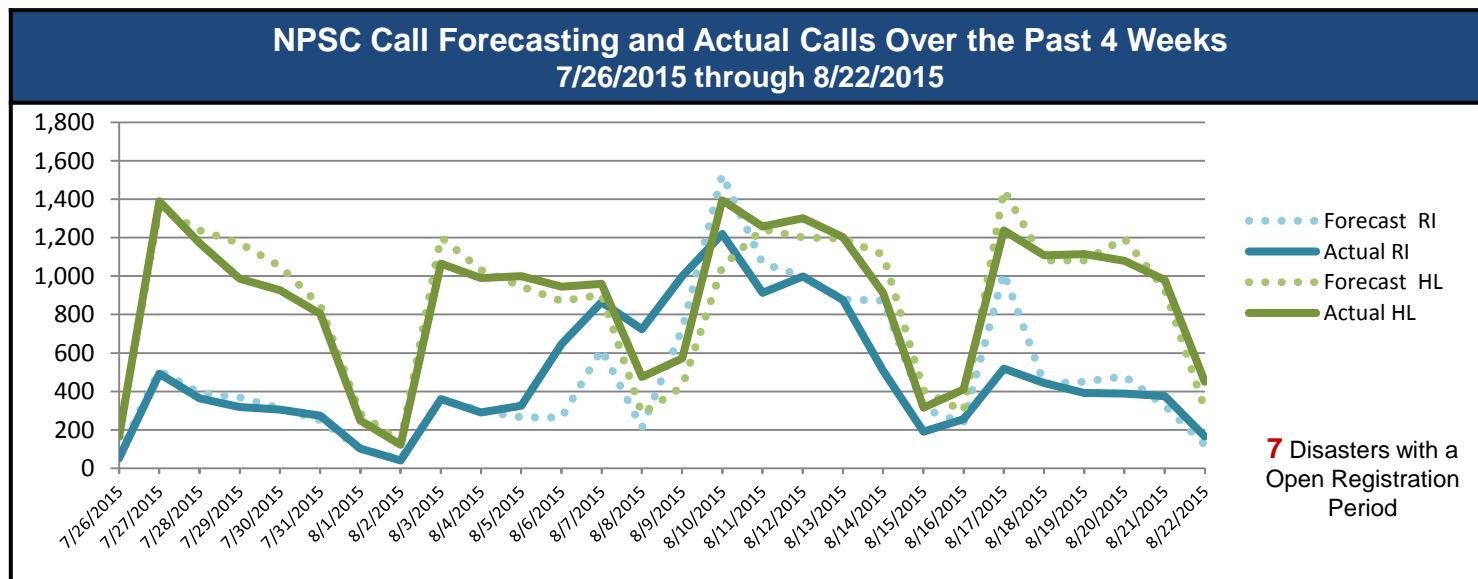


States with Currently Occupied Units

NPSC Activity



NPSC Call Activity in the Past Week 8/16/2015 through 8/22/2015				
Call Type	Projected Calls	Actual Calls	Average Answer Time	Maximum Delay Time
Registration Intake	3,260	2,565	:12	3:43
Helpline	6,439	6,245	:12	5:51
All Calls	9,699	8,810	:12	5:51



Individual Assistance Activity

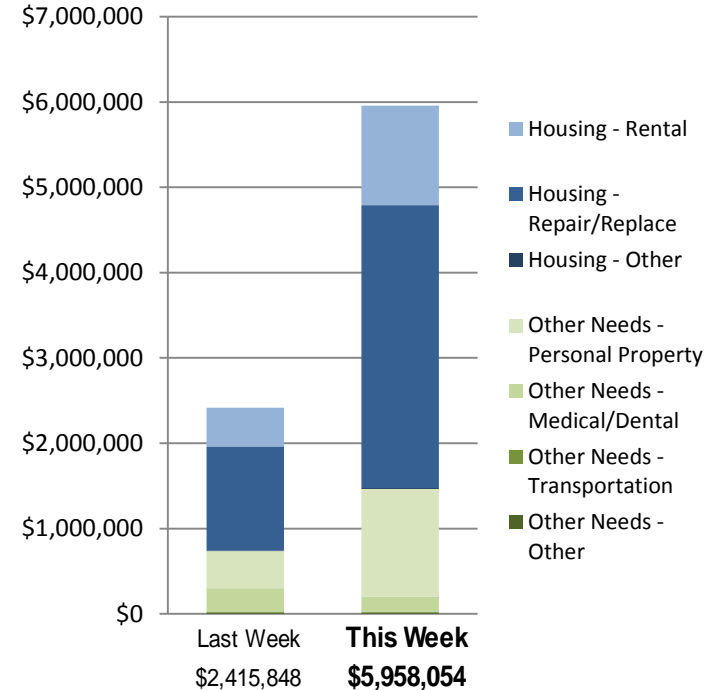


Individuals and Households Program Activity

as of August 17, 2015 at 0000 EST

		In Past 7 Days		Cumulative	
		Applicants Approved	Amount Approved	Applicants Approved	Amount Approved
Open Registration Period	4222-OK Declared 05-26-2015 End Of Reg Period 08-26-2015				
	Housing Assistance	163	\$376,893.57	4,101	\$14,856,094.43
	Other Needs Assistance	16	\$32,041.26	1,109	\$2,355,577.01
	Total IHP	\$408,934.83		\$17,211,671.44	
	4223-TX Declared 05-29-2015 End Of Reg Period 08-27-2015				
	Housing Assistance	218	\$450,956.18	10,648	\$40,795,234.89
	Other Needs Assistance	102	\$217,621.72	4,261	\$8,949,986.44
	Total IHP	\$668,577.90		\$49,745,221.33	
	4226-AR Declared 06-26-2015 End Of Reg Period 08-25-2015				
	Housing Assistance	6	\$6,696.29	236	\$985,086.92
	Other Needs Assistance	0	\$0.00	47	\$104,682.13
	Total IHP	\$6,696.29		\$1,089,769.05	
	4227-WY Declared 07-07-2015 End Of Reg Period 09-08-2015				
	Housing Assistance	5	\$36,325.50	136	\$956,028.82
	Other Needs Assistance	1	\$3,088.91	48	\$231,677.73
	Total IHP	\$39,414.41		\$1,187,706.55	
	4235-MP Declared 08-05-2015 End Of Reg Period 10-05-2015				
	Housing Assistance	376	\$1,839,494.67	430	\$2,082,963.89
	Other Needs Assistance	368	\$913,920.20	427	\$1,034,148.92
	Total IHP	\$2,753,414.87		\$3,117,112.81	
	4239-KY Declared 08-12-2015 End Of Reg Period 10-12-2015				
	Housing Assistance	249	\$1,659,912.98	285	\$2,022,456.82
	Other Needs Assistance	64	\$288,247.40	72	\$315,656.41
	Total IHP	\$1,948,160.38		\$2,338,113.23	
Other IHP Active	7 Declarations IHP Programmatically Open - Closed Registration *				
	Housing Assistance	39	\$124,308.59		
	Other Needs Assistance	3	\$8,546.73		
	Total IHP	\$132,855.32			
	Total IHP Approved in Past Week	\$5,958,054.00			

IHP Approved per Category In the Past 2 Weeks – 8/3/2015 through 8/17/2015



FEMA Readiness – Deployable Teams /Assets



Deployable Teams/Assets									
Resource	Status	Total	FMC Available		Partially Available	Not Available	Detailed, Deployed, Activated	Comments	Rating Criterion
FCO		35	9	26%	0	1	25		OFDC Readiness: FCO Green Yellow Red Type 1 3+ 2 1 Type 2 4+ 3 2 Type 3 4 3 2
FDRC		9	5	56%	0	0	4		FDRC 3 2 1
US&R		28	27	96%	0	1	0	NM-TF1 (Red) – Personnel shortages	<ul style="list-style-type: none">• Green = Available/FMC• Yellow = Available/PMC• Red = Out-of-Service• Blue = Assigned/Deployed
National IMAT		3	3	100%	0	0	0		<ul style="list-style-type: none">• Green: 3 avail• Yellow: 1-2 avail• Red: 0 avail (<i>Individual N-IMAT red if 50% of Section Chiefs and/or Team Leader is unavailable for deployment.</i>)
Regional IMAT		13	3	23%	1	0	9	<u>Deployed:</u> RI to NH/MA Aug 6 - TBD (training but FMC) RII (Team A) to CAD RIV (Team 1) deployed to KY RVI (Team 1 & 2) deployed to TX RVII deployed to MO RVIII (Team 1) deployed to SD & CO RIX (Teams 1 & 2) deployed to CNMI RX (Team 1) deployed to WA <u>Partially Mission Capable:</u> RV returned to region (Reconstituting)	<ul style="list-style-type: none">• Green: 7 or more avail• Yellow: 4 - 6 teams available• Red: > 8 teams deployed/unavailable <i>R-IMAT also red if TL Ops/Log Chief is unavailable & has no qualified replacement</i>
MCOV		59	46	78%	0	12	1	1 unit in TX	<ul style="list-style-type: none">• Green = 80 – 100% avail• Yellow = 60 – 79% avail• Red = 59% or below avail• Readiness remains 95%

FEMA Readiness – National/Regional Teams



National/Regional Teams									
Resource	Status	Total	FMC Available		Partially Available	Not Available	Status	Comments	Rating Criterion
NWC		5	5	100%	0	0	Not Activated		• Green = FMC • Yellow = PMC • Red = NMC
NRCC		2	344	89%	0	44	Not Activated		
HLT		1	N/A	N/A	0	0	Activated		
DEST							Not Activated		
RRCCs		10	10	100%	0	0	Not Activated		
RWCs/MOCs		10	10	100%	0	0	Not Activated		



FEMA

FEMA's mission is to support our citizens and first responders to ensure that as a nation we work together to build, sustain, and improve our capability to prepare for, protect against, respond to, recover from, and mitigate all hazards.