

The Disaster Center is dedicated to the idea that disaster mitigation is cost effective and individuals pursuing their own interest are the greatest potential force for disaster reduction.

Please consider making a small donation to the Disaster Center



When disaster mitigation is cost effective, we are on the road to bringing disasters to an end.



FEMA

Daily Operations Briefing

Saturday, August 25, 2018
8:30 a.m. EDT

Significant Activity – Aug 24-25



FEMA

Significant Events: Tropical Storm Lane, Mendocino Complex Fire

Tropical Activity:

- Atlantic – Disturbance 1: Tropical cyclone activity is not expected next 48 hours
- Eastern Pacific – Disturbance 1: Medium (50%); Disturbance 2: Low (20%)
- Central Pacific – Tropical Storm Lane
- Western Pacific – No activity affecting U.S. interests

Significant Weather:

- Flash flooding possible – Southwest to Central Rockies
- Elevated fire weather – CA, NV, UT, OR, ID, MT & WY
- Red Flag Warnings – ID & WY

Declaration Activity:

- Amendment No. 1 to FEMA-3399-EM-HI
- FMAG approved – Ramsey Canyon Fire, OR

Tropical Storm Lane – Central Pacific

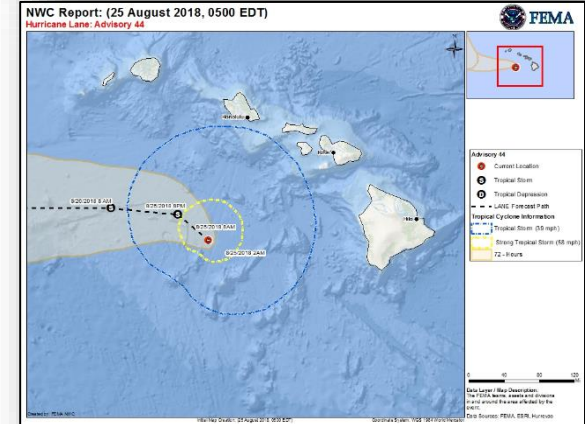
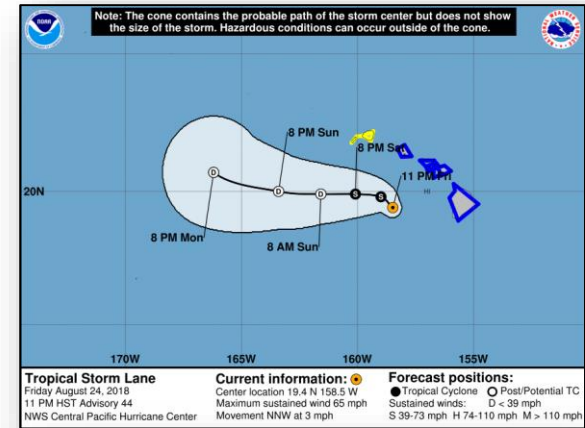


Tropical Storm Lane (Advisory #44 as of 5:00 a.m. EDT)

- Located 135 miles SSW of Honolulu, Hawaii
- On the forecast track, center of Lane will pass south of Kauai and Niihau today
- Moving NNW at 3 mph
- Maximum sustained winds 65 mph
- Weakening is forecast through the weekend; may become a remnant low late tonight or Sunday
- Tropical-storm-force winds extend out 130 miles
- Tropical Storm Warning in effect for Oahu, Maui County (including islands of Maui, Lanai, Molokai and Kahoolawe) and Hawaii County
- Tropical Storm Watch in effect for Kauai County, including islands of Kauai and Niihau

Hazards Affecting Land

- Outer rain bands will produce excessive rainfall this weekend which could lead to additional flash flooding and landslides
- Expected to produce total rain accumulations of 10 to 20 inches in some areas
- Localized storm total amounts in excess of 40 inches have already been observed along the windward side of the Big Island
- Large swells will impact the Hawaiian Islands into the weekend; will produce high surf along exposed south and east shorelines through today
- Isolated tornadoes possible today across parts of the Big Island, Maui County and Oahu



Tropical Storm Lane – Local Impacts / Response



FEMA

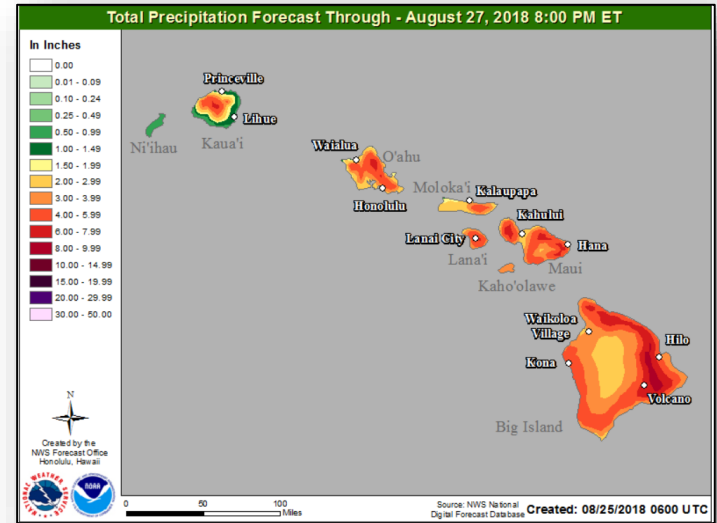
Impacts

- Over two feet of rain has already fallen on the windward side of the Big Island
- Road closures, swift water rescues, and flooded homes have been reported
- Minimal customers without power **Note: Customer outage data is provided by the Department of Energy's EAGLE-I system. Comprehensive National coverage of all electrical service providers is not available.*
- All airports open with multiple flight cancellations and delays
- Honolulu Transit & Maui Public Transit system suspended services

Response

State / Local

- HI EOC is at Partial Activation (Kilauea lava flow and Tropical Storm Lane)
- Governor declared a State of Emergency on August 21, 2018
- County EOC Activations:
 - Hawaii & Maui Counties – Full Activation
 - City and County of Honolulu (Oahu) – Full Activation
 - Kauai County – Partial Activation
- All public schools and DOE state offices closed statewide
- Shelters / Occupants: 36 (-1) / 1,154 (-599) *(ARC Midnight Shelter Count as of 7:00 am EDT August 25)*



Tropical Storm Lane – Local Impacts / Response



Federal Response

FEMA Region IX

- RWC at Enhanced Watch (24/7)
- IMAT-1 deployed to HI (Kilauea lava flow & Hurricane Lane)
- LNOs deployed to all county EOCs
- Region VII IMAT deployed to Oakland, CA (Hurricane Lane)

FEMA HQ

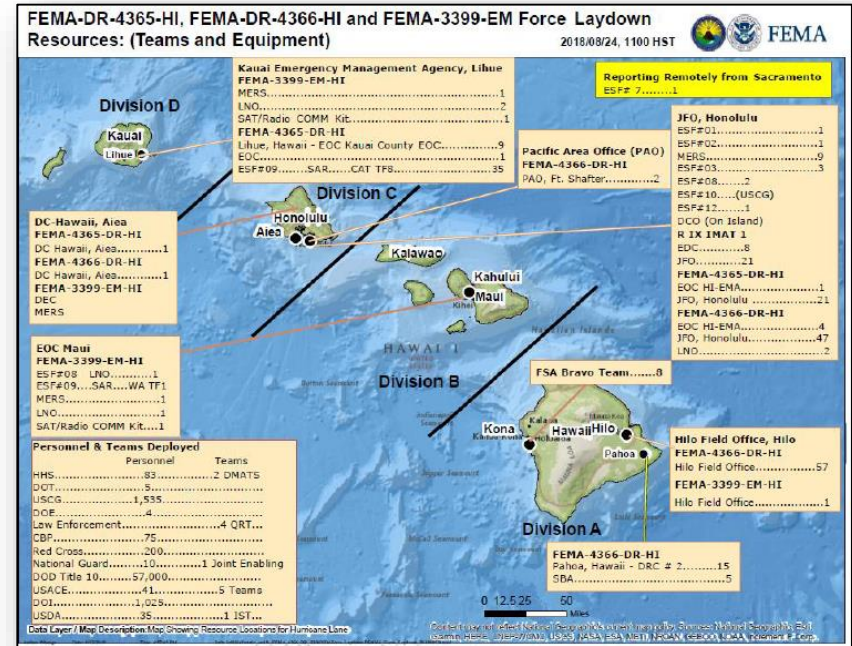
- FEMA NWC at Steady State, continues to monitor
- NRCC at Level I, Full Activation (24/7)
- Bothell MERS deployed to Honolulu, Hilo, Wailuku and Lihue; Denver MERS deployed to Honolulu
- ISBs established in Maui, Kona, and Kauai
- Reservist from HLT supporting / monitoring in HI

US&R

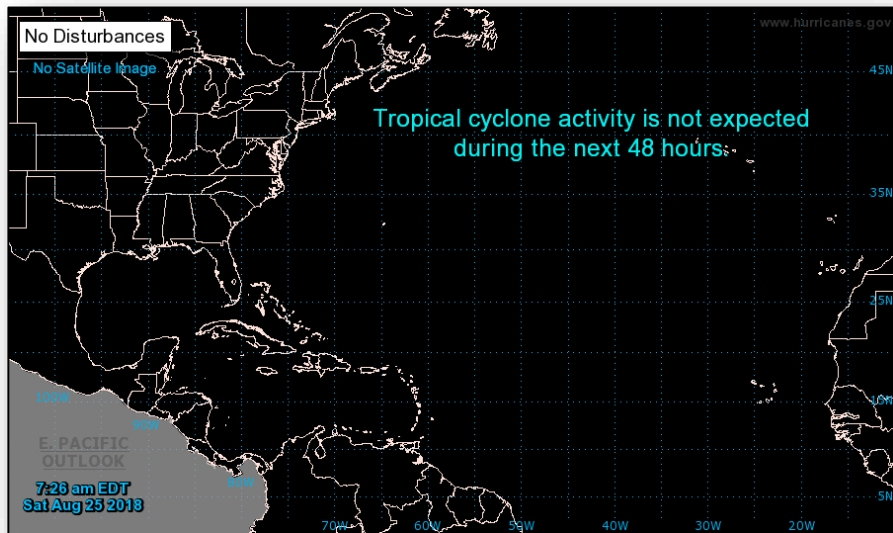
- Federal Search and Rescue Coordination Group deployed to Honolulu
- Incident Support Team (IST) White deployed to Honolulu
- Three NIMS Type 3 US&R Task Forces deployed to Hawaii: CA-TF8 (Kauai), CA-TF3 (Oahu), and WA-TF1 (Maui)
- Six US&R Mission Ready Packages – Water Operations are on Alert

USACE

- Staff (54 personnel) on Oahu and Kauai including two USACE Power Planning and Response Teams (PRT); two 249th Prime Power Teams; and a Debris PRT



Tropical Outlook – Atlantic



48 Hour Outlook



5 Day Outlook

Tropical Outlook – Eastern Pacific

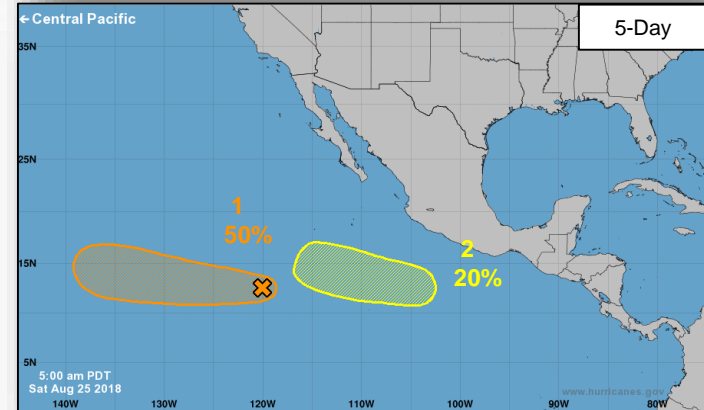
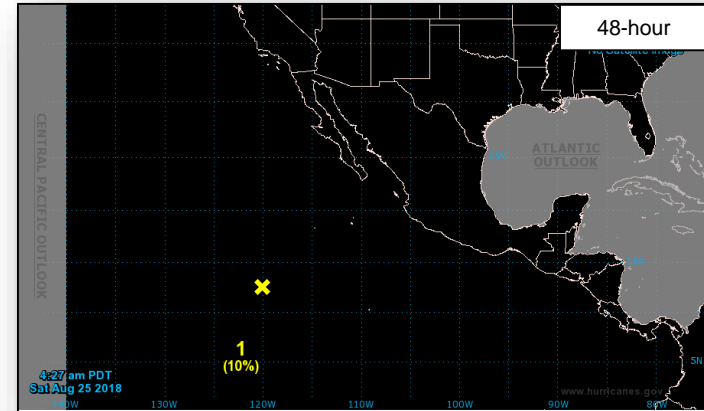


Disturbance 1 (as of 8:00 a.m. EDT)

- Located 1,000 miles SSW of southern tip of Baja California peninsula, Mexico
- Moving W at 10 mph
- Gradual development possible next several days; tropical depression could form by middle of next week
- Formation chance through 48 hours: Low (10%)
- Formation chance through 5 days: Medium (50%)

Disturbance 2 (as of 8:00 a.m. EDT)

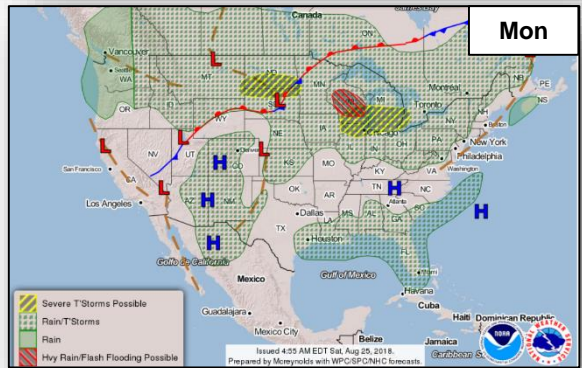
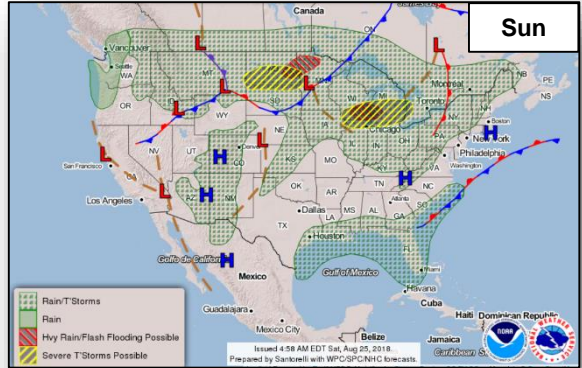
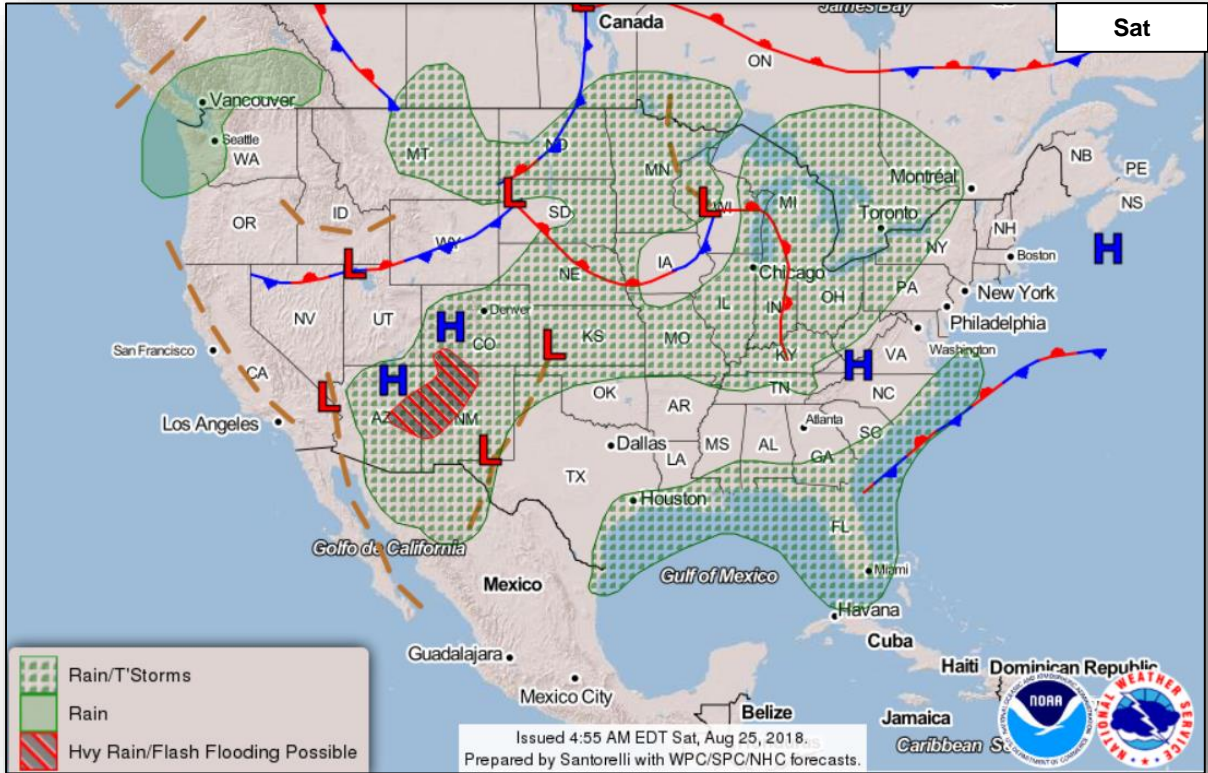
- Could form well to ESE of Hawaiian Islands in a couple of days
- Moving W or WNW at 10 mph
- Development, if any, should be slow to occur next week
- Formation chance through 48 hours: Low (near 0%)
- Formation chance through 5 days: Low (20%)



National Weather Forecast



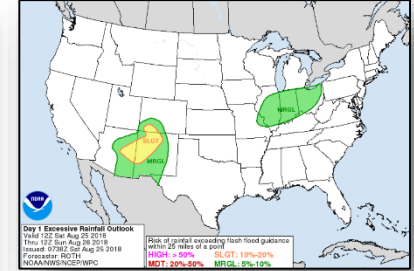
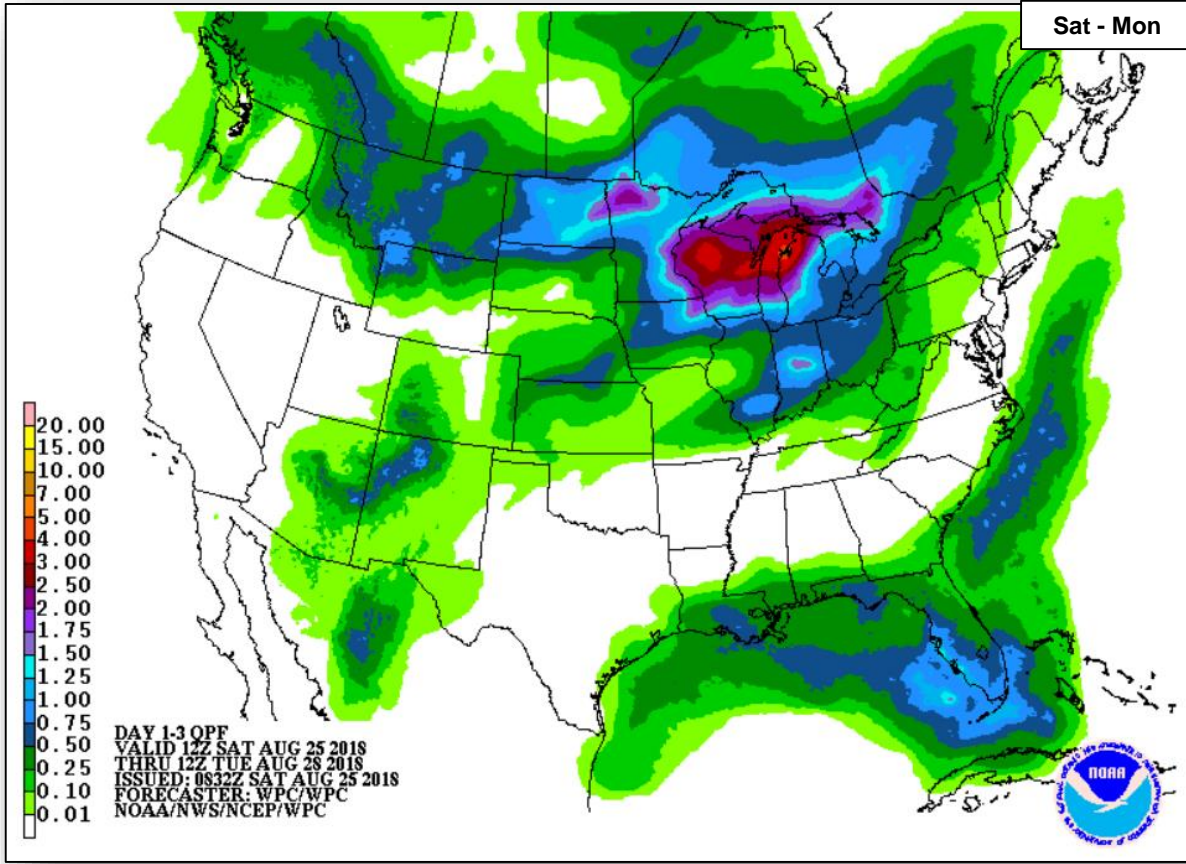
FEMA



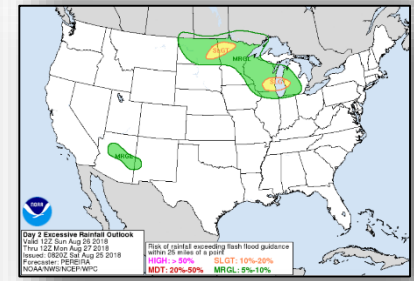
Precipitation / Excessive Rainfall Forecast



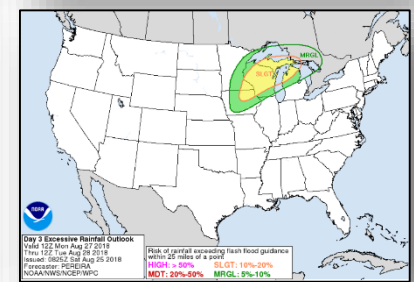
FEMA



Sat



Sun

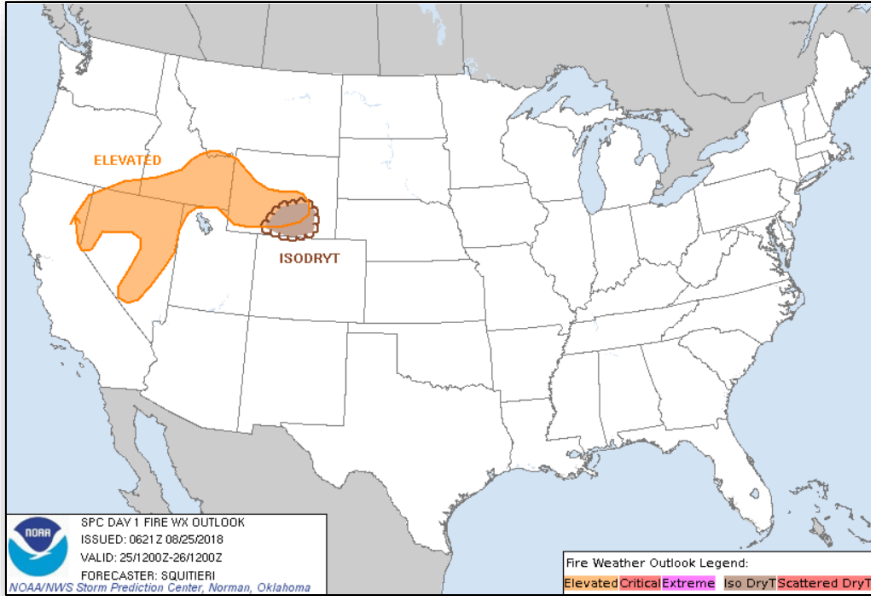


Mon

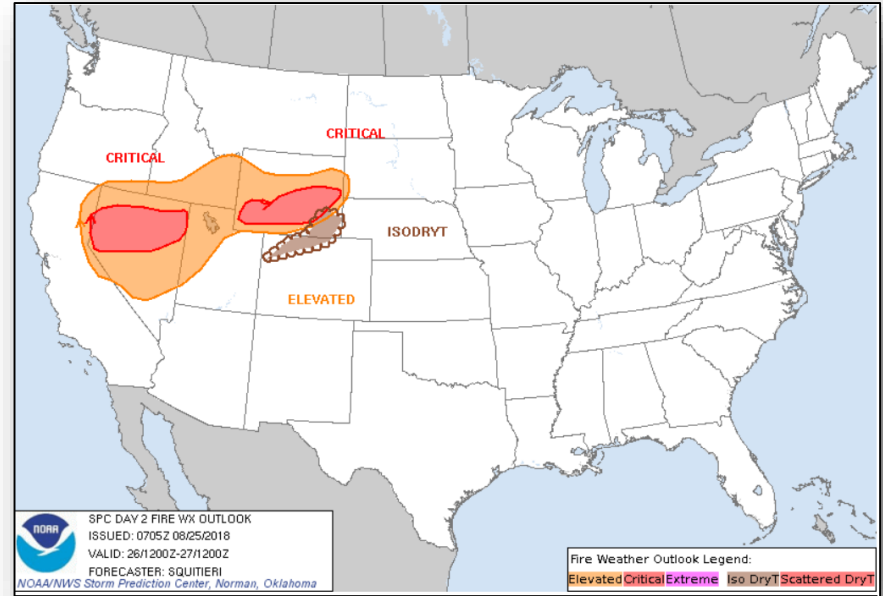
Fire Weather Outlook



FEMA



Saturday

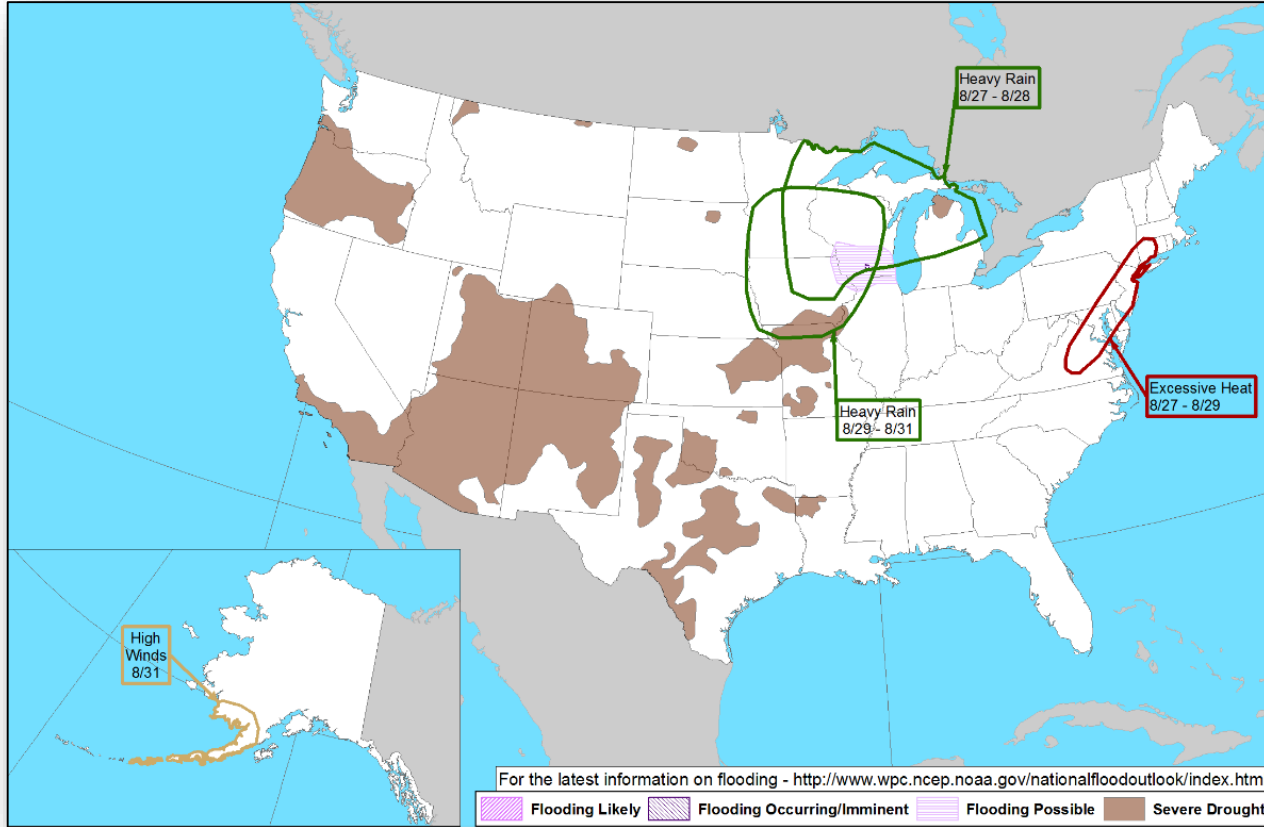


Sunday

Hazards Outlook – Aug 27-31



FEMA



Joint Preliminary Damage Assessments



FEMA

Region	State / Location	Event	IA / PA	Number of Counties		Start – End
				Requested	Completed	
II	NY	Severe Storms and Flooding August 2018	IA	5	0	8/23 – TBD
			PA	8	0	TBD
	NJ	Severe Storms and Flooding August 2018	IA	5	5	8/23 – 8/24
			PA	0	0	N/A
III	VA	Severe Weather August 2-3, 2018	IA	0	0	N/A
			PA	4	0	8/27 - TBD
VIII	CO	Severe Storms, Straight-line Winds & Flooding July 23-29, 2018	IA	2	2	8/21 – 8/24
			PA	13	13	8/21 – 8/24

Ramsey Canyon Fire – OR



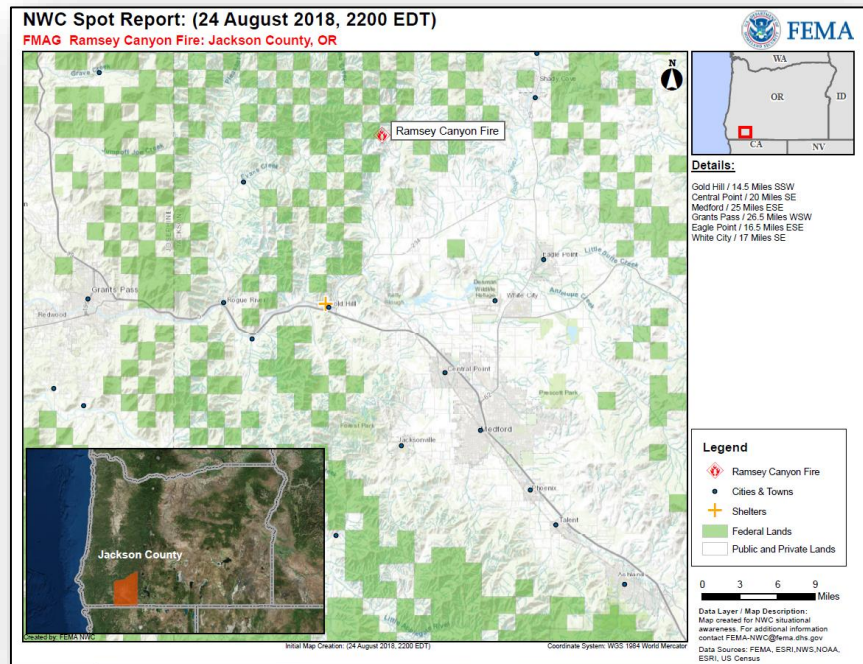
Fire Name (County)	FMAG Number	Acres Burned	Percent Contained	Evacuations (Residents)	Structures			Fatalities / Injuries
					Threatened	Damaged	Destroyed	
Ramsey Canyon (Jackson)	XXXX-FM-OR Aug 24, 2018	1,300	14%	Mandatory (120)	193 homes	0	0	0 / 0

Current Situation *(at the time of the FMAG approval)*

- Fire began August 22, 2018 and is burning on federal and private land in and around the communities of Ramsey Canyon, Meadows, and Evans Creek (combined population approximately 400)
- Threatening 193 homes (174 are primary residences)
- Also threatening major transmission lines and multiple communication and cell towers
- Mandatory evacuations in effect for 120 people
- 1 shelter open with 2 occupants *(ARC Midnight Shelter Count as of 7:37 am EDT)*

Response

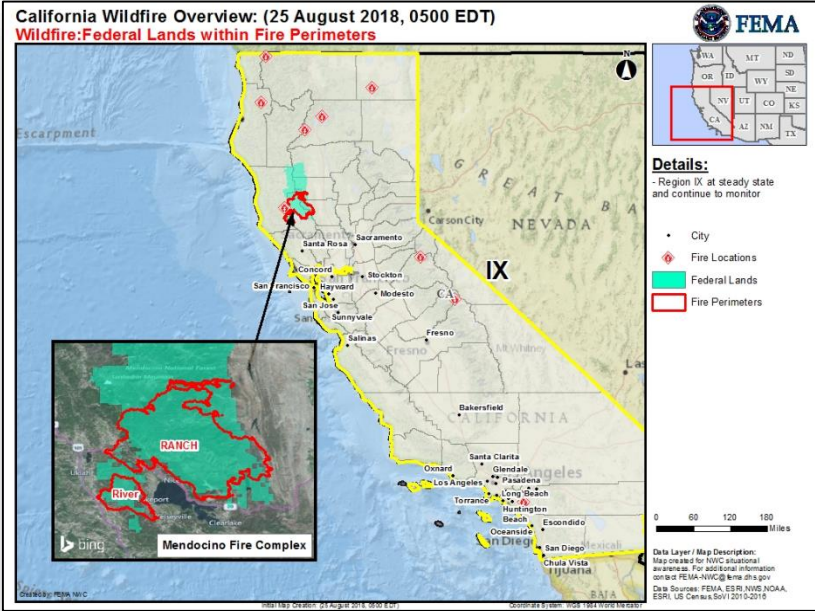
- OR EOC at Normal Operations
- Region X remains at Steady State, continues to monitor
- FMAG approved August 24, 2018



Wildfire Summary



Fire Name (County)	FMAG Number	Acres Burned	Percent Contained	Evacuations (Residents)	Structures			Fatalities / Injuries
					Threatened	Damaged	Destroyed	
California (1)								
Mendocino Complex (Mendocino & Lake)	5262-FM-CA	424,419 (+8,734)	76% (+2)	Mandatory	1,050 (1,025 homes)	38 (+1) (13 homes)	280 (+3) (157 homes)	1 / 3



Disaster Requests & Declarations



FEMA

Declaration Requests in Process					Requests APPROVED (since last report)	Requests DENIED (since last report)
8	IA	PA	HM	Date Requested	0	0
SD – DR Severe Storms and Flooding		X	X	June 14, 2018		
MT – DR Flooding		X	X	June 18, 2018		
AK – DR Flooding		X	X	June 28, 2018		
LA – DR Flooding		X	X	June 29, 2018		
MN – DR Severe Storms, Tornadoes, Straight-line Winds, and Flooding		X	X	August 7, 2018		
Havasupai Tribe – DR Severe Storms, Flooding, and Landslides		X	X	August 8, 2018		
NE – DR Severe Storms, Tornadoes, Straight-line Winds, and Flooding		X	X	August 8, 2018		
IA – DR Severe Storms and Tornadoes	X	X	X	August 17, 2018		

Disaster Amendments



FEMA

Amendment	Date Issued	Action
Amendment No. 1 to FEMA-3399-DR-EM	August 24, 2018	Changes the FCO to Willie G. Nunn

Readiness – Deployable Teams and Assets



FEMA

Resource	Force Strength	Available	Deployed	Other	Cadres with 25% or Less Availability
IM Workforce	11,679 ▲	3,949 ▼ 34%	4,218 ▼	3,512	EHP 12% (48/391); ER 19% (8/43); HM 23% (214/952); HR 21% (50/235); LOG 24% (281/1,161) OPS 24% (61/254); PA 10% (171/1,785); SAF 13% (7/53); SEC 14% (14/101)
National IMATs* (3 Teams)	East 1: East 2: West:	B-2 Charlie B-48			
Regional IMATs (4 - 6 Teams)	Assigned: Available: PMC / NMC: Deployed:	13 4 4 5			
National ISBs (2-3 Teams)	Team A Team B Team C	Deployed Deployed Deployed			
US&R (≥ 66%)	Assigned: Available: PMC / NMC: Deployed:	28 25 0 3			
MERS (≥ 66%)	Assigned: Available: PMC / NMC: Deployed:	36 32 0 4			
FCO (≤ 1 Type I)	Assigned: Available: PMC / NMC: Deployed:	33 12 (+1) 3 (-2) 18 (-1)			
FDRC (≥ 3)	Assigned: Available: PMC / NMC: Deployed:	14 6 (-1) 2 (+1) 6			
As of 3:00 a.m. EDT August 25, 2018					

* **B-2 Status:** Assemble ≤ 2-hrs, On Site ≤ 18-hrs; **B-48 Status:** Assemble and deploy ≤ 48hrs; **Charlie Status:** No team assemble time requirement

FEMA Readiness – Activation Teams



Status		Activated Team	Activation Level	Activation Times	Reason / Comments
NWC (5 Teams)	Steady State				
NRCC (2 Teams)	Activated	Gold	Level I	24/7	Tropical Storm Lane
HLT (1 Team)	Activated				
RWC / MOCs (10 Regions)	Activated	Region IX	Enhanced Watch	24/7	Tropical Storm Lane
RRCCs (10 Regions)	Available				

Backup Regions: **IV, VII, & V**



FEMA

FEMA's mission is helping people before, during, and after disasters.