

The Disaster Center is dedicated to the idea that disaster mitigation is cost effective and individuals pursuing their own interest are the greatest potential force for disaster reduction.

Please consider making a small donation to the Disaster Center



When disaster mitigation is cost effective, we are on the road to bringing disasters to an end.



FEMA

Daily Operations Briefing

Wednesday, August 26, 2015

8:30 a.m. EDT

Significant Activity: Aug 25-26



Significant Events: None

Tropical Activity:

- Atlantic: Tropical: Tropical Storm Erika;
- Eastern Pacific: Tropical Storm Ignacio; Depression 1 (near 100% / near 100%)
- Central Pacific: Tropical Depression Kilo & Hurricane Loke
- Western Pacific: No significant activity affecting U.S. territories

Significant Weather:

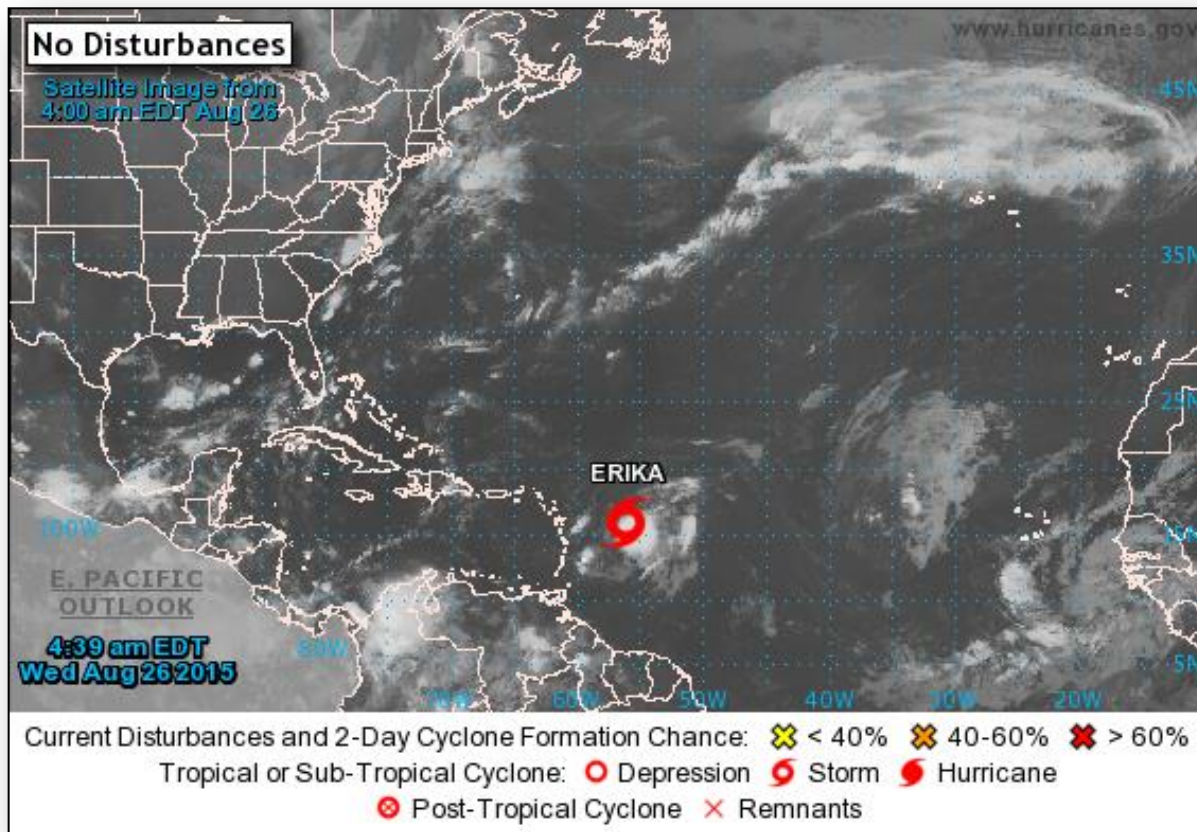
- Showers and Thunderstorms – Northern Rockies into the Central Plains down to the Southwest
- Red Flag Warnings – None
- Elevated Fire Weather – CA, OR & NV
- Isolated Dry Thunderstorms – Northern Intermountain to Central Great Basin
- Space weather: No space weather in the last 24 hr; Next 24 hours: Minor R1 radio blackouts predicted

Declaration Activity: None

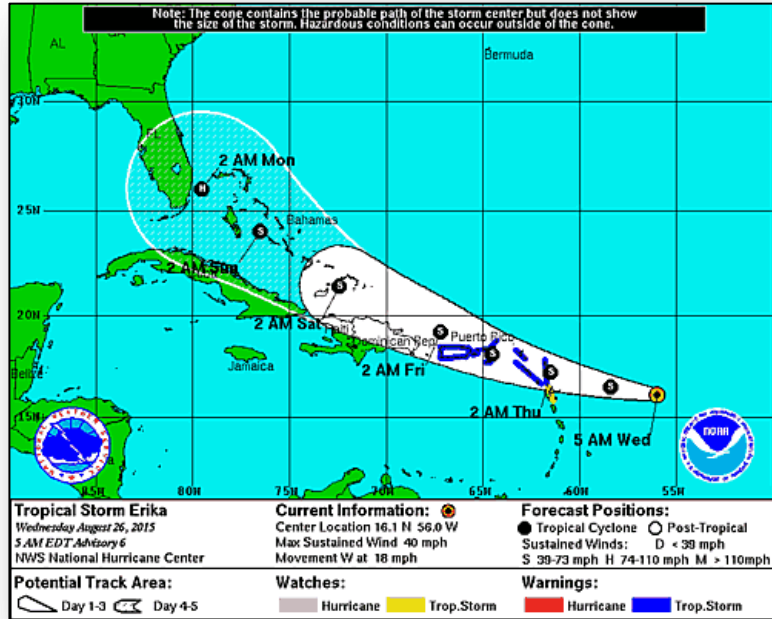
2-Day Tropical Outlook – Atlantic



FEMA



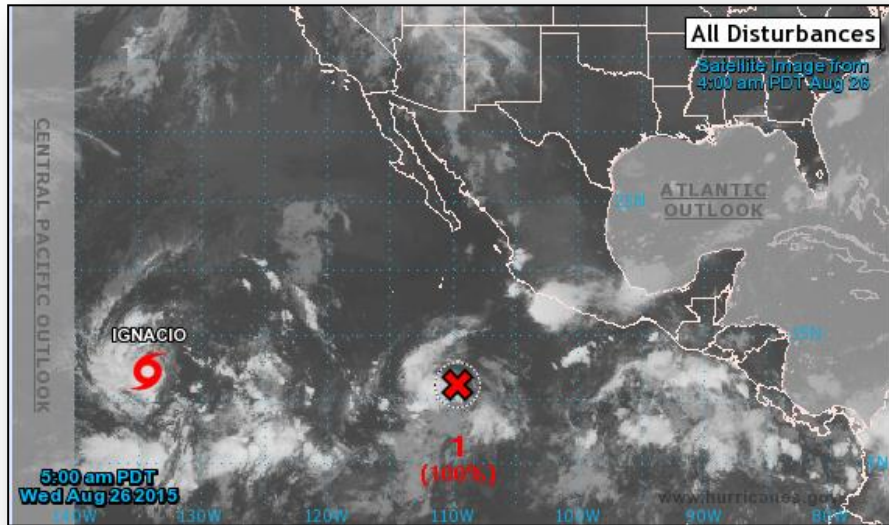
Atlantic – Tropical Storm Erika



Tropical Storm Erika Advisory #6: (As of 5:00 a.m. EDT)

- Located 390 miles E of Antigua
- Moving W at 18 mph
- Slow strengthening forecasted over next 48 hours
- Maximum sustained winds of 40 mph with higher gusts
- Tropical storm force winds extend outward up to 105 miles from the center
- Tropical storm warning in effect for Puerto Rico, the US Virgin Islands and other Caribbean islands

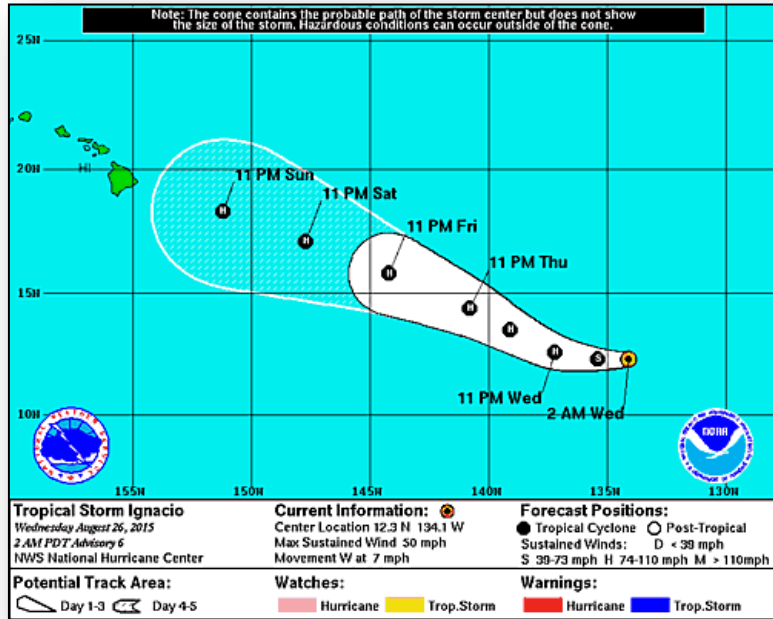
2-Day Tropical Outlook – Eastern Pacific



Disturbance 1: (as of 8:00 a.m. EDT)

- Located 700 miles SSW of Manzanillo, Mexico
- Moving WNW at 10 to 15 mph
- Environmental conditions expected to be conducive for development
- Become better organized since yesterday
- Formation chance:
 - Through 48 hours: High (100%)
 - Through 5 days: High (100%)

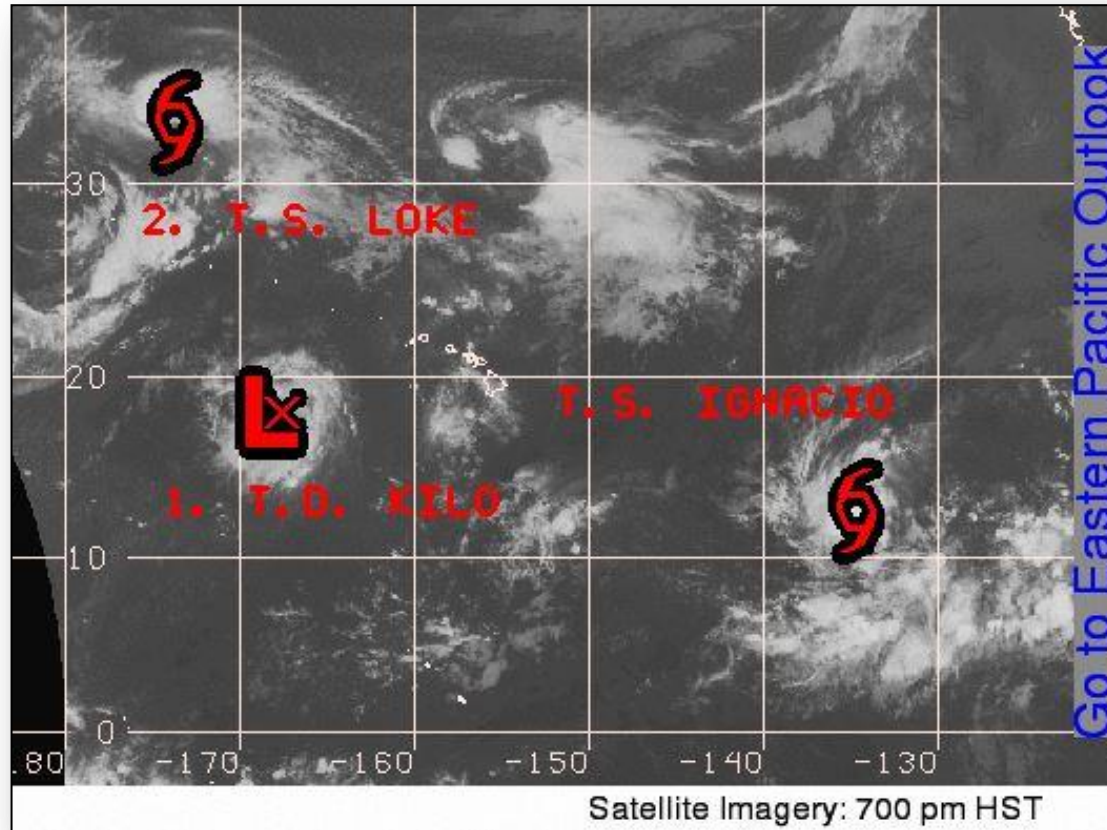
Eastern Pacific – Tropical Storm Ignacio



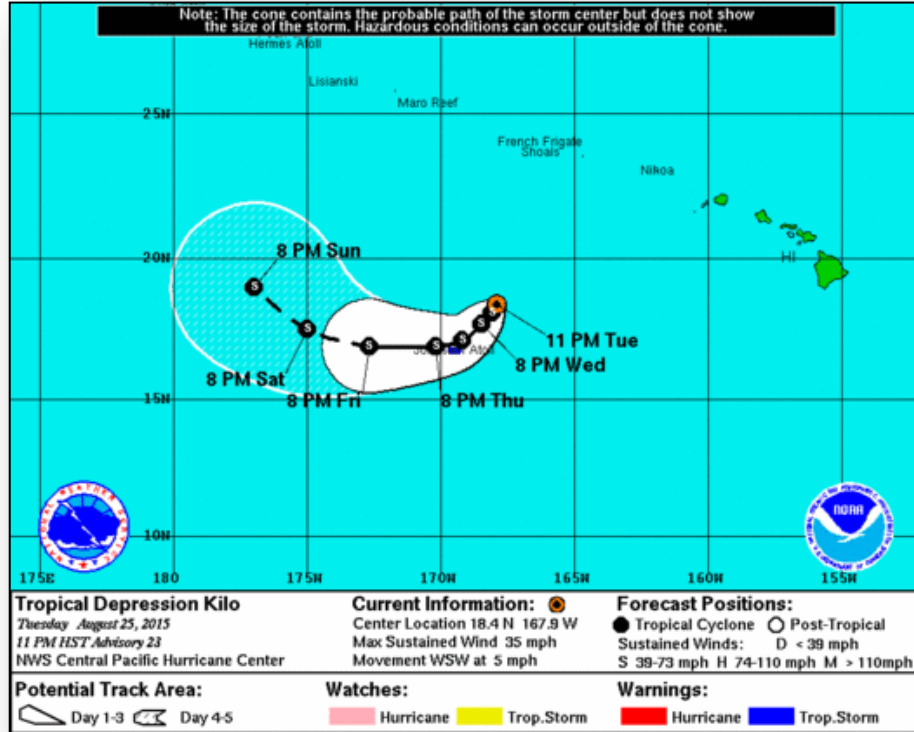
Tropical Storm Ignacio Advisory #6: (as of 5:00 a.m. EDT)

- Located 1,485 miles ESE of Hilo, HI
- Moving W at 7 mph; expected to increase forward speed
- Gradual strengthening is forecast during the next 48 hours
- Maximum sustained winds of 50 mph with higher gusts
- Tropical storm force winds extend up to 60 miles
- Forecast to become hurricane Thursday

2-Day Tropical Outlook – Central Pacific



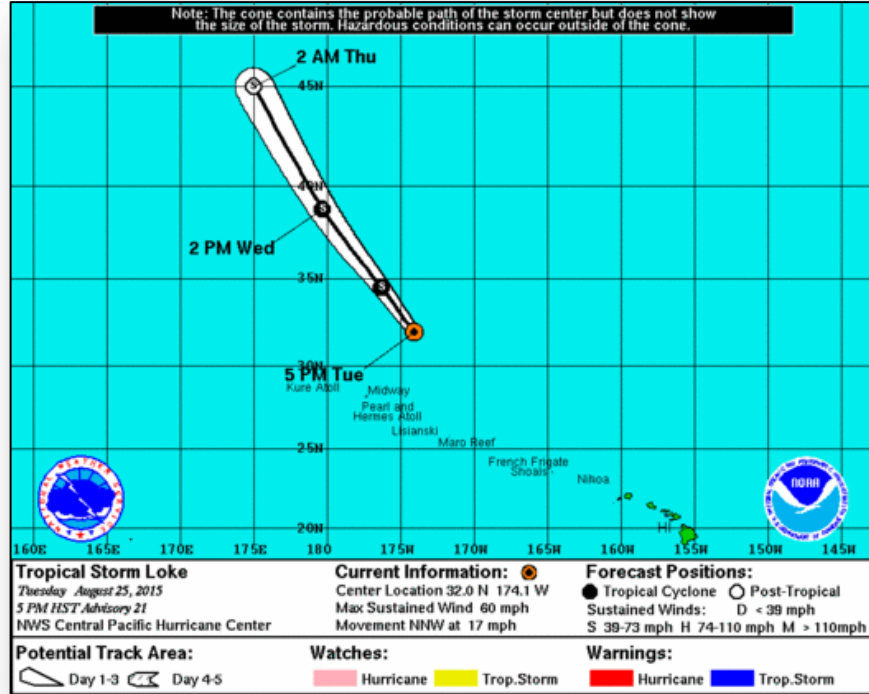
Central Pacific – Tropical Depression Kilo



Advisory #23: (As of 5:00 a.m. EDT)

- Located 585 miles WSW of Barking Sands, HI
- Moving WSW at 5 mph
- Slow movement expected towards the SE
- Maximum sustained winds of 35 mph
- May become a tropical storm by Wednesday

Central Pacific – Hurricane Loke (FINAL)



Advisory #22: (As of 5:00 a.m. EDT)

- Located 370 miles NE of Midway Island
- Moving NW at 21 mph
- Motion is expected to curve NW and accelerate in the next 36 hours that will become an extratropical low
- Maximum sustained winds 50 mph with higher gusts
- Tropical storm force winds extend to 175 miles

Wildfire Summary

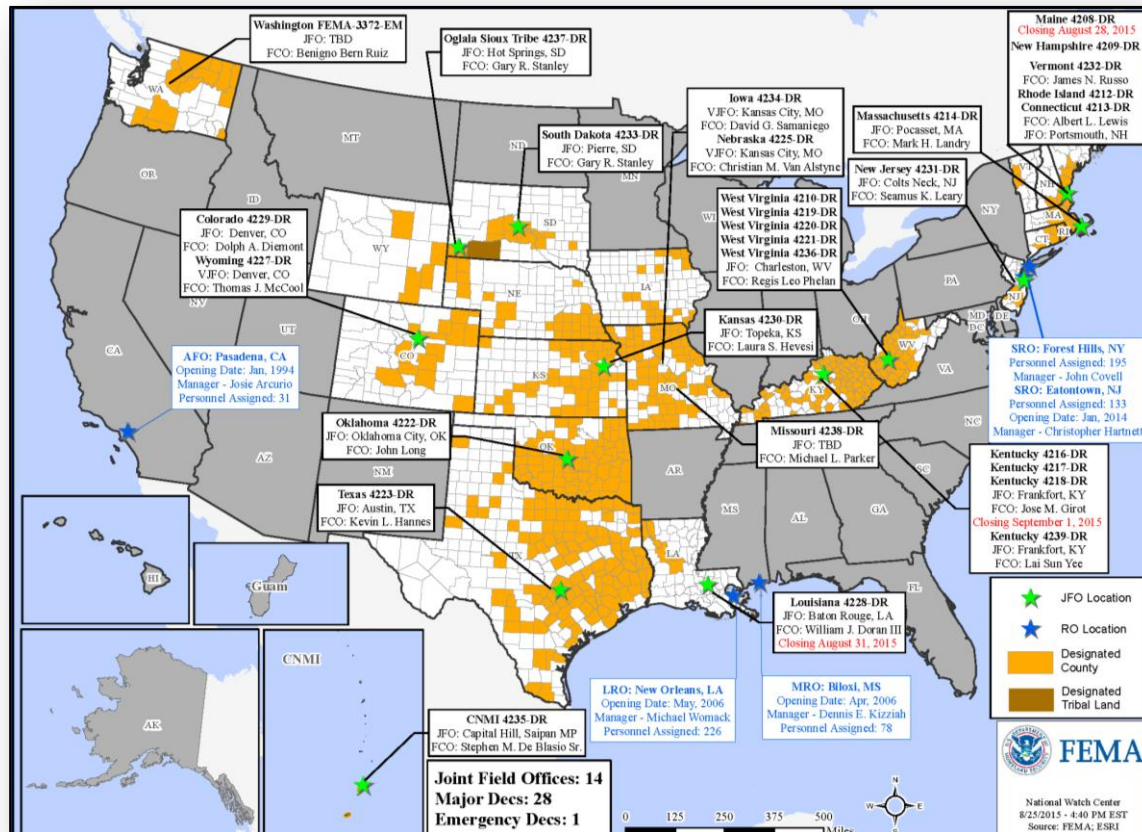


Fire Name (County)	FMAG #	Acres burned	% Contained	Evacuations (Residents)	Structures Threatened	Structures Damaged/ Destroyed	Fatalities / Injuries
Washington (5)							
Upper Skagit Complex (Skagit & Whatcom County)	FEMA-5109-FM-WA (Goodell Fire) Approved Aug 24	6,655	0%	Mandatory/ Voluntary 200	116 mixed commercial/residenti al	0/1	0/0
Chelan Complex (Chelan County, WA)	FEMA-5100-FM-WA Approved Aug 14	88,142 (+38)	47% (+7)	Voluntary 800	1,330 homes / 150 commercial / 640 Minor	0/44 (21 homes)	0/7
Kettle Complex (Ferry County)	FEMA-5101-FM-WA Approved Aug 14 FEMA-5108-FM-WA (Renner Fire) Approved Aug 21	58,061 (+1,042)	16%	Mandatory/ Voluntary 334	2,600 homes / 70 mixed / 100 commercial / 1,360 minor	0/2 (1 home)	0/2
Colville Complex (Stevens County)	FEMA-5103-FM-WA Approved Aug 14	8,720 (-32,056)	48%	Evacuations Lifted	294 homes / 155 minor	22 homes / 18 (2 homes)	0/1
Okanogan Complex (Okanogan County)	FEMA-5104-FM-WA Approved Aug 14 FEMA-5106-FM-WA (Twisp River Fire) Approved Aug 19	416,650 (+8,311)	5 – 17% (+2)	Mandatory/ Voluntary 680 (-184)	7,140 homes / 150 commercial / 1,000 minor	0/82 (39 homes)	3/4
Oregon (2)							
Canyon Creek Complex (Grant County)	FEMA-5102-FM-OR Approved Aug 15	74,649 (+1,589)	42% (+5)	Evacuations Lifted	50 homes	50 homes / 39 homes	0/2
Grizzly Bear Complex (Wallowa County)	FEMA-5107-FM-OR Approved Aug 21	67,930 (+8,730)	10% (+5)	Evacuations Lifted	400 homes / 35 commercial / 35 minor	0/ 33 (5 homes)	0/4

Open Field Offices as of Aug 26



FEMA

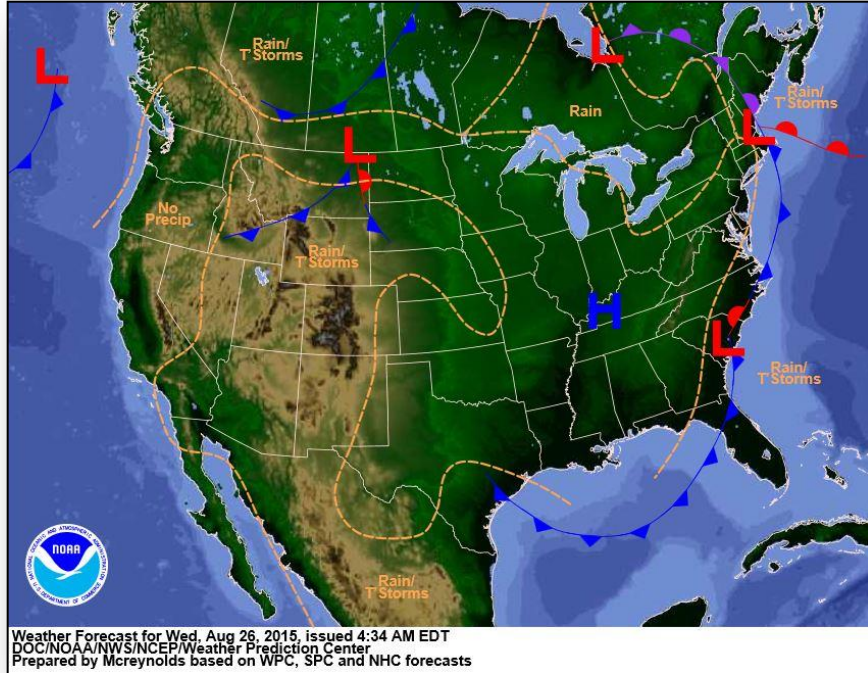


Joint Preliminary Damage Assessments

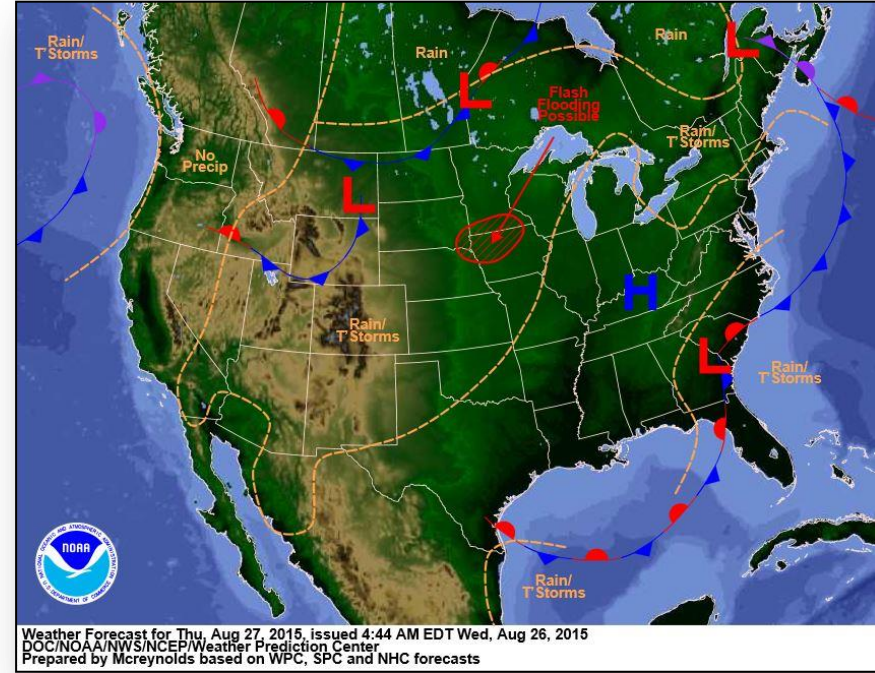


Region	State / Location	Event	I/PA	Number of Counties		Start – End
				Requested	Complete	
IV	FL	Heavy Rain & Flooding July 26, 2015 & continuing	IA	5	5	8/12 - 8/19
			PA	5	0	TBD
V	IN	Severe Storms, Tornadoes, Straight-line Winds & Flooding June 7 – July 29, 2015	PA	26	26	8/18 – 8/24

National Weather Forecast

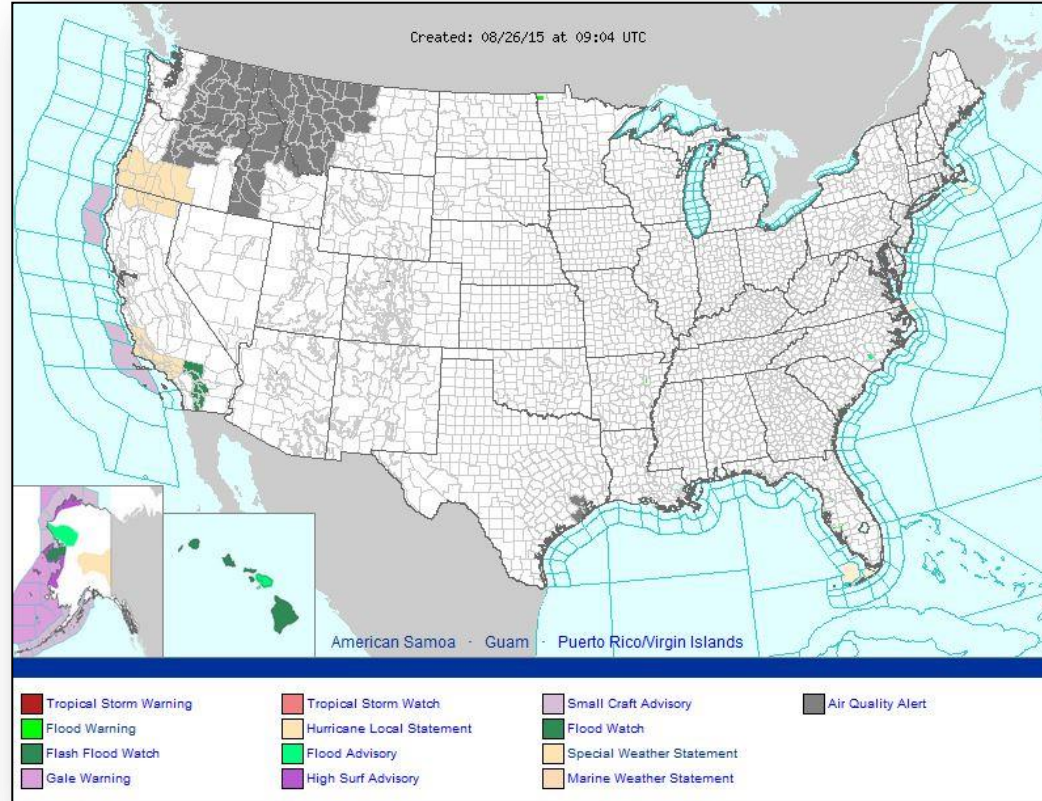


Today

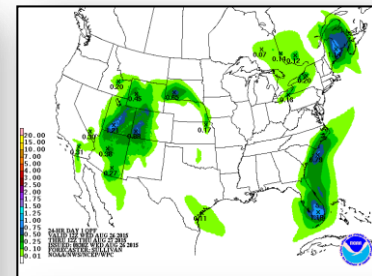
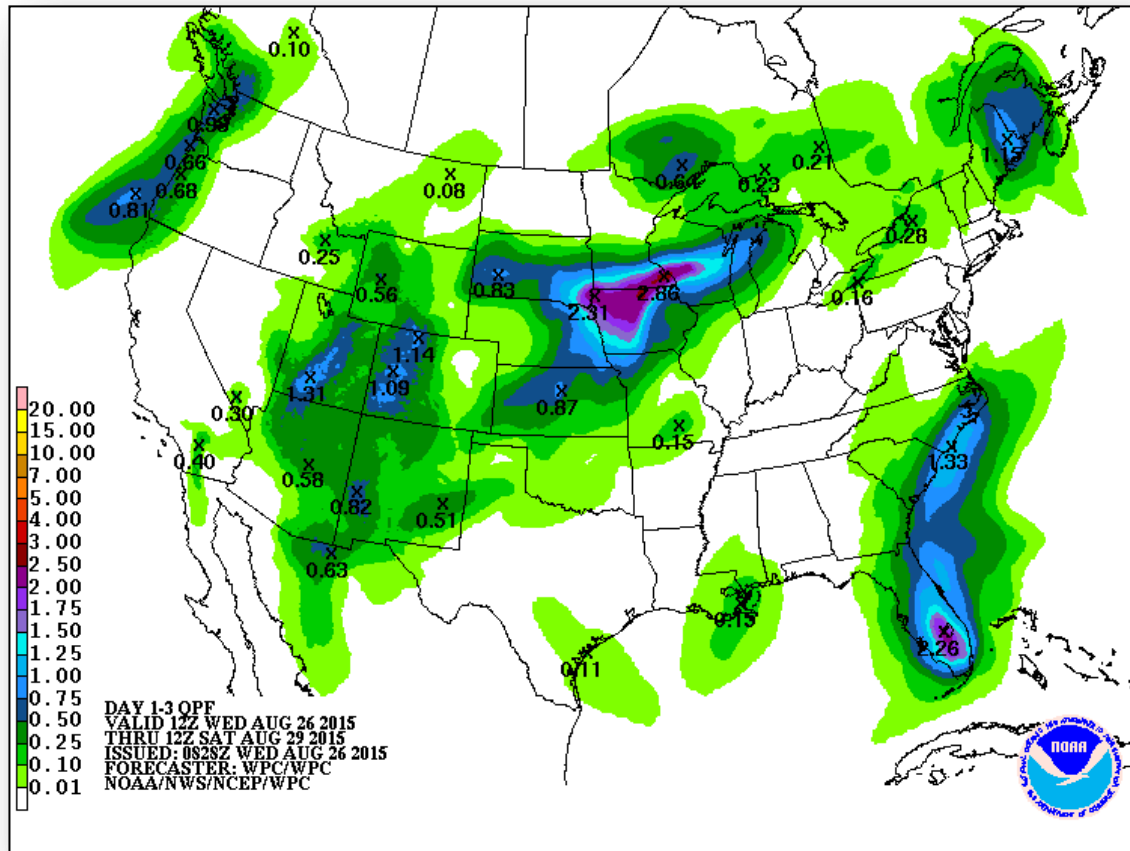


Tomorrow

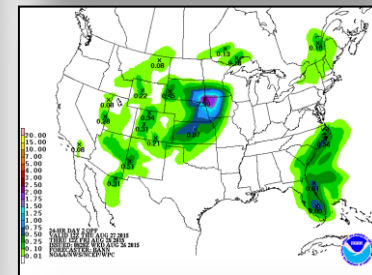
Active Watches/Warnings



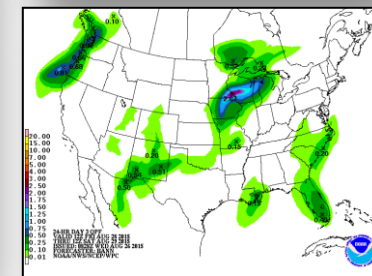
Precipitation Forecast, 1-3 Day



Day 1

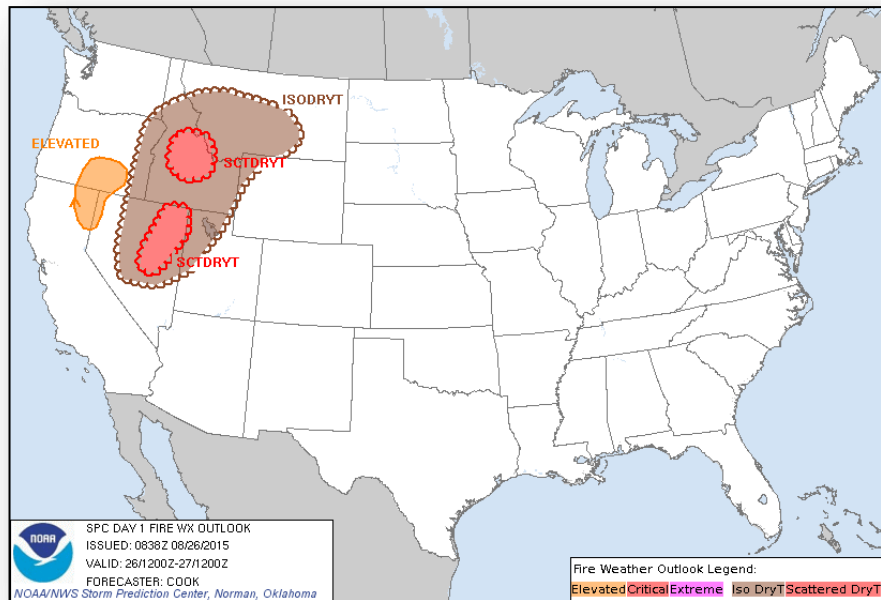


Day 2

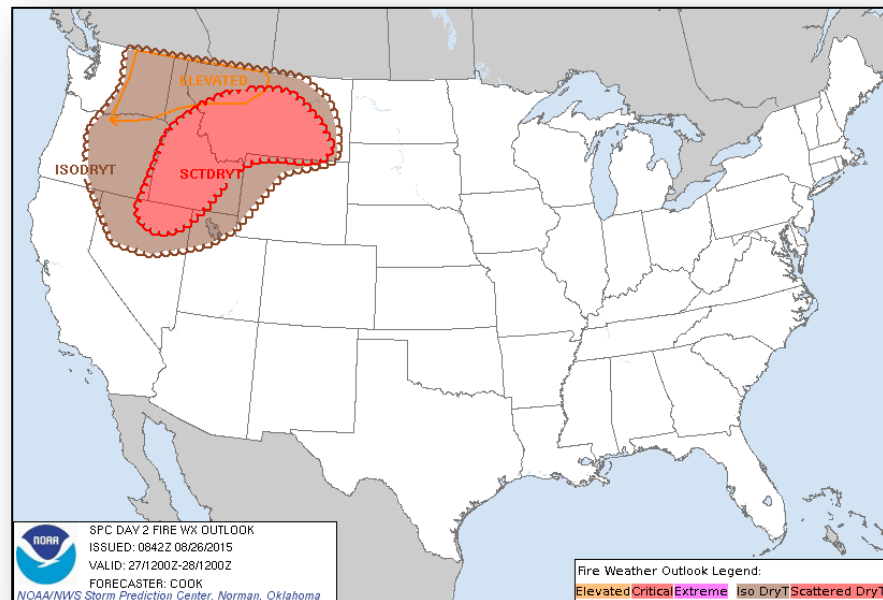


Day 3

Fire Weather Outlook, Days 1-2

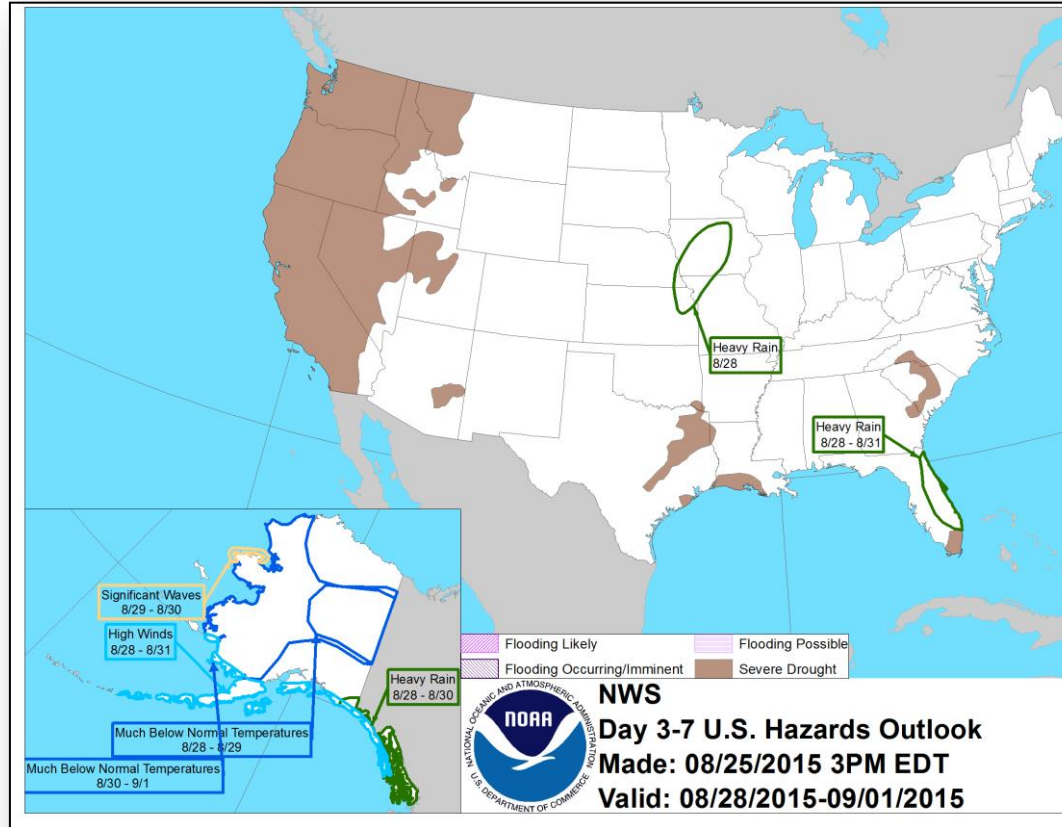


Today



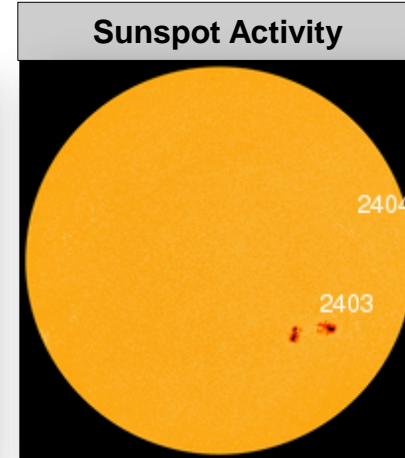
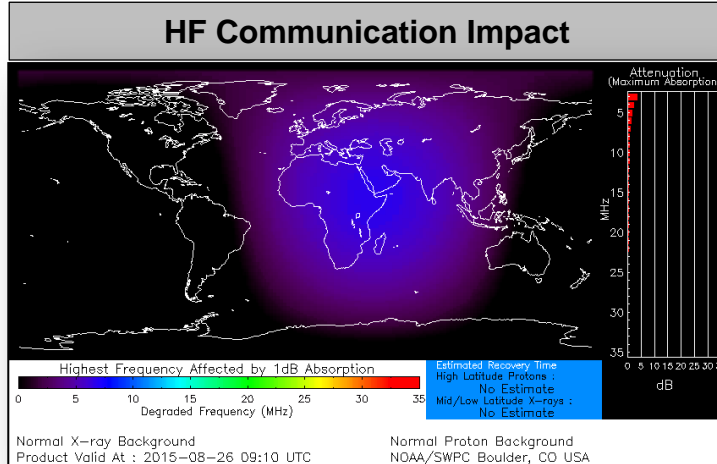
Tomorrow

Hazard Outlook, Aug 28- Sep 1



Space Weather

	Past 24 Hours	Current	Next 24 Hours
Space Weather Activity:	None	None	Minor
• Geomagnetic Storms	None	None	None
• Solar Radiation Storms	None	None	None
• Radio Blackouts	None	None	R1



FEMA Readiness – Deployable Teams /Assets



Deployable Teams/Assets									
Resource	Status	Total	FMC Available		Partially Available	Not Available	Detailed, Deployed, Activated	Comments	Rating Criterion
FCO		35	9	26%	0	1	25		OFDC Readiness: FCO Green Yellow Red Type 1 3+ 2 1 Type 2 4+ 3 2 Type 3 4 3 2
FDRC		9	5	56%	0	0	4		FDRC 3 2 1
US&R		28	27	96%	0	1	0	NM-TF1 (Red) – Personnel shortages	• Green = Available/FMC • Yellow = Available/PMC • Red = Out-of-Service • Blue = Assigned/Deployed
National IMAT		3	3	100%	0	0	0		• Green: 3 avail • Yellow: 1-2 avail • Red: 0 avail (<i>Individual N-IMAT red if 50% of Section Chiefs and/or Team Leader is unavailable for deployment.</i>)
Regional IMAT		13	3	23%	1	0	9	<u>Deployed:</u> RI to NH/MA Aug 6 - TBD (training but FMC) RII (Team A) to CAD RIV (Team 1) deployed to KY RVI (Team 1 & 2) deployed to TX RVII deployed to MO RVIII (Team 1) deployed to SD & CO RIX (Teams 1 & 2) deployed to CNMI RX (Team 1) deployed to WA <u>Partially Mission Capable:</u> RV returned to region (Reconstituting)	• Green: 7 or more avail • Yellow: 4 - 6 teams available • Red: > 8 teams deployed/unavailable <i>R-IMAT also red if TL Ops/Log Chief is unavailable & has no qualified replacement</i>
MCOV		59	47	80	0	11	1	1 unit in TX	• Green = 80 – 100% avail • Yellow = 60 – 79% avail • Red = 59% or below avail • Readiness remains 95%

FEMA Readiness – National/Regional Teams



National/Regional Teams									
Resource	Status	Total	FMC Available		Partially Available	Not Available	Status	Comments	Rating Criterion
NWC		5	5	100%	0	0	Not Activated		• Green = FMC • Yellow = PMC • Red = NMC
NRCC		2	344	89%	0	44	Not Activated		
HLT		1	N/A	N/A	0	0	Activated		
DEST							Not Activated		
RRCCs		10	10	100%	0	0	Not Activated		
RWCs/MOCs		10	10	100%	0	0	Not Activated		



FEMA

FEMA's mission is to support our citizens and first responders to ensure that as a nation we work together to build, sustain, and improve our capability to prepare for, protect against, respond to, recover from, and mitigate all hazards.