

The Disaster Center is dedicated to the idea that disaster mitigation is cost effective and individuals pursuing their own interest are the greatest potential force for disaster reduction.

Please consider making a small donation to the Disaster Center



When disaster mitigation is cost effective, we are on the road to bringing disasters to an end.



FEMA

Daily Operations Briefing

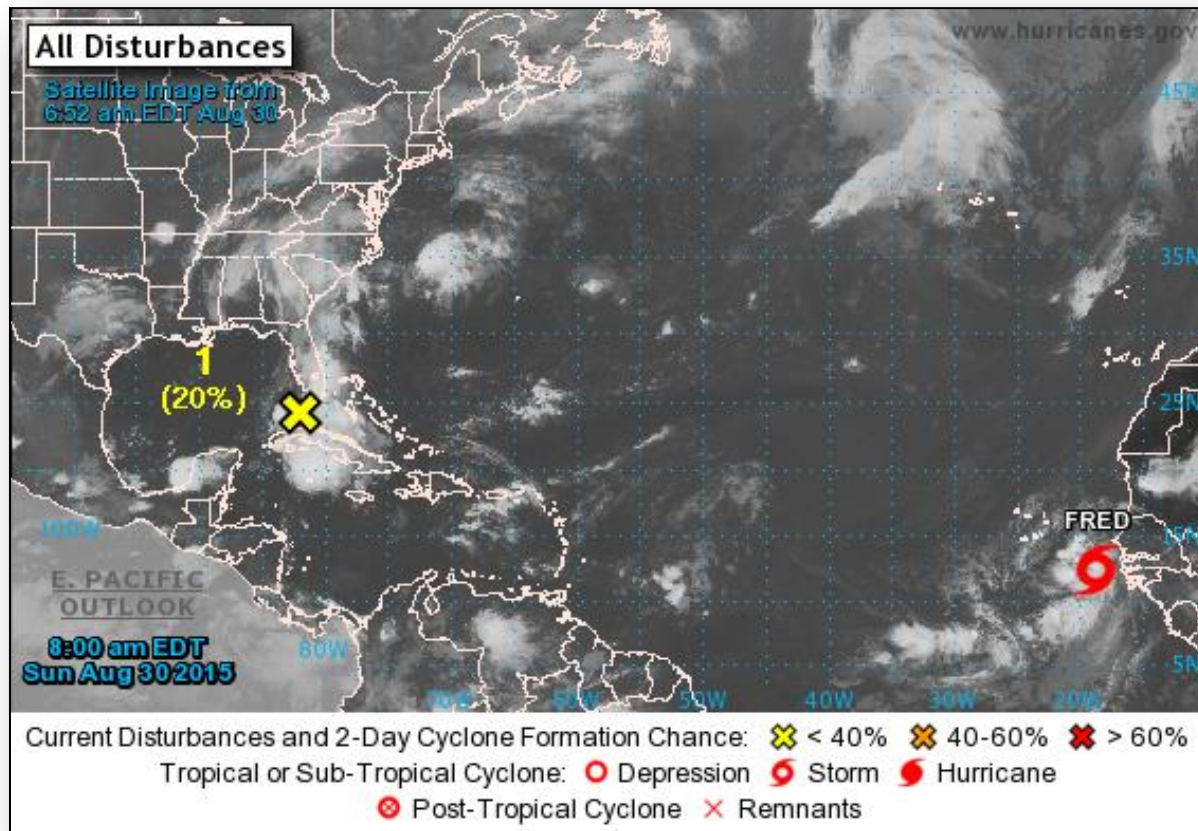
Sunday, August 30, 2015

8:30 a.m. EDT

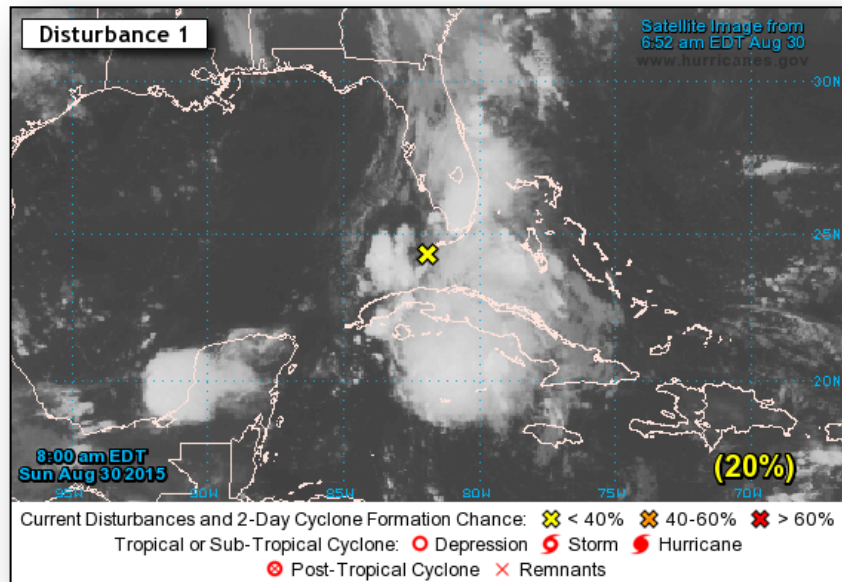
2-Day Tropical Outlook – Atlantic



FEMA



Remnants of Erika (Atlantic)



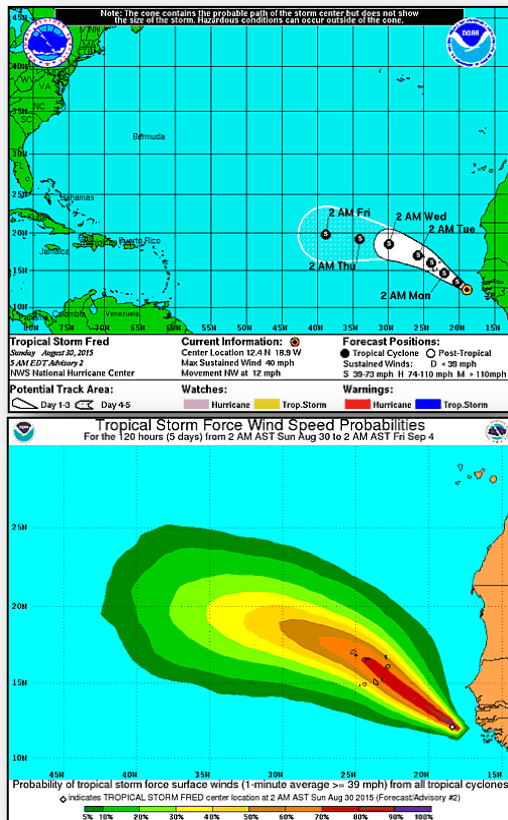
Disturbance 1: (as of 8:00 a.m. EDT)

- Trough of low pressure associated with remnants of Erika
- Producing areas of heavy rain over south FL and the Keys
- Currently no signs of redevelopment
- Could be marginally favorable for formation next 48 hrs
- Activity will spread NW then N across the eastern Gulf of Mexico late today and Monday
- Formation chance (48 hrs) – Low (20%)
- Formation chance (5 days) – Low (30%)

Response:

- FL EOC Partially Activated
- RIV IMAT-2 & pre-designated FCO deployed to FL
- LNO deployed to FL
- PDA Teams have been pre-identified
- Retrograde for ISB estimated complete Tuesday/Wednesday

Atlantic – Tropical Storm Fred



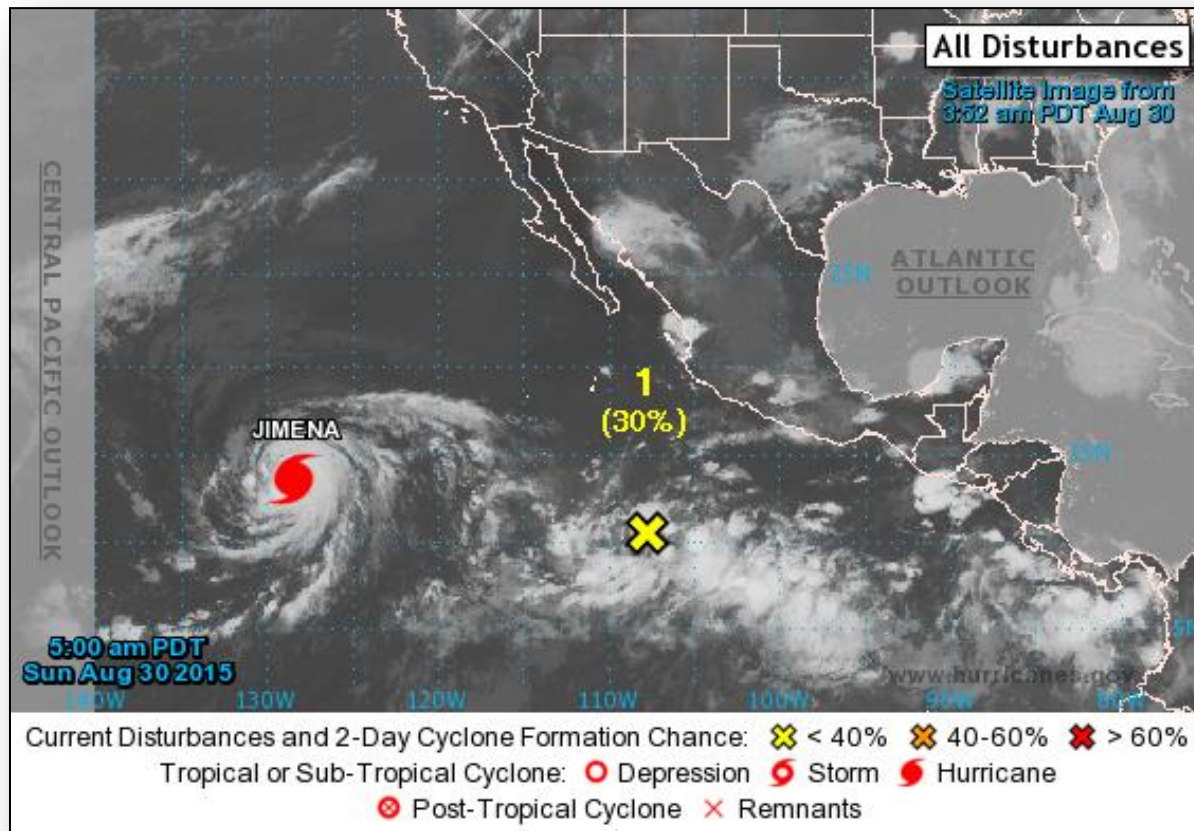
Advisory #2: (As of 5:00 a.m. EDT)

- Located 405 ESE of southernmost Cape Verde Islands
- Moving NW at 12 mph
- Maximum sustained winds at 40 mph with higher gusts
- Additional strengthening is forecast next 48 hours
- Tropical storm-force winds extends outwards up to 35 miles from the center

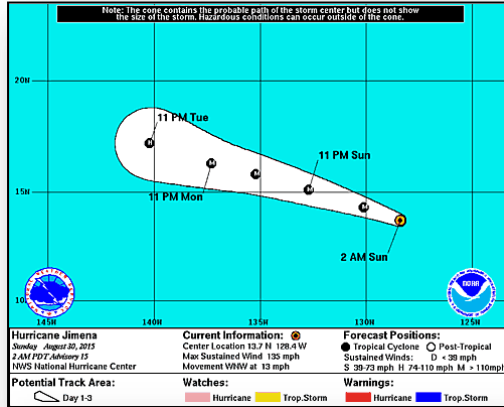
2-Day Tropical Outlook – Eastern Pacific



FEMA

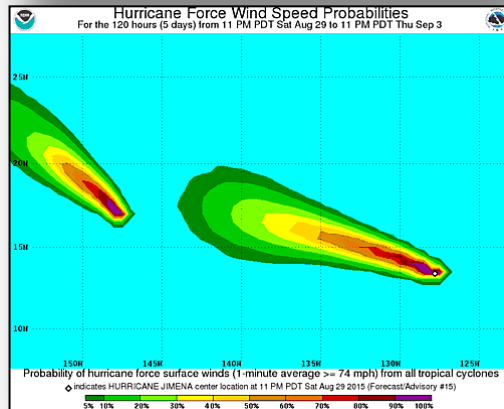


Eastern Pacific – Hurricane Jimena

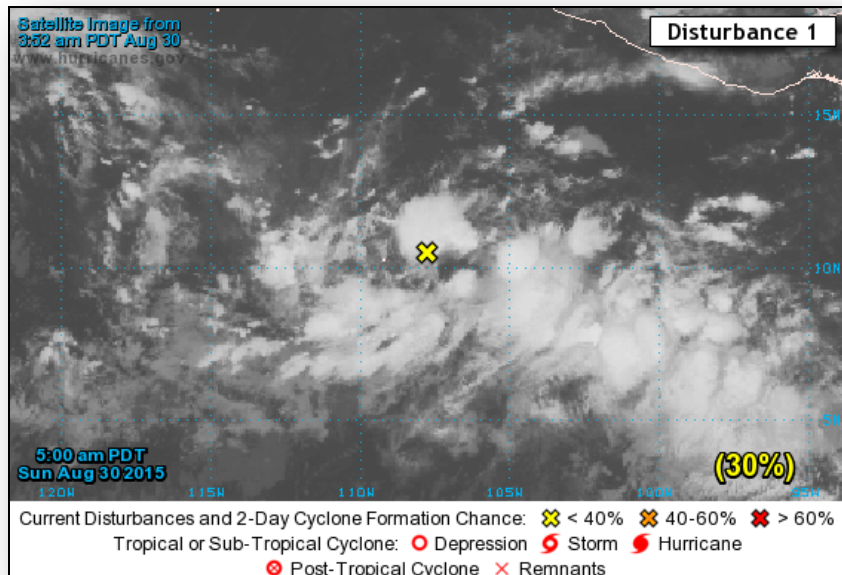


Advisory #15: (as of 5:00 a.m. EDT)

- Located 1,365 miles WSW of southern tip of Baja California, Mexico
- Moving WNW at 13 mph
- Maximum sustained winds 115 mph (Cat 4)
- General motion is expected to continue for next 48 hours
- Fluctuations in intensity are likely next day or so
- Expected to remain a major hurricane through Monday
- Hurricane-force winds extend outward up to 35 miles
- Tropical storm-force winds extend outward up to 125 miles
- No coastal watches or warnings in effect



Two Day Tropical Outlook – Eastern Pacific



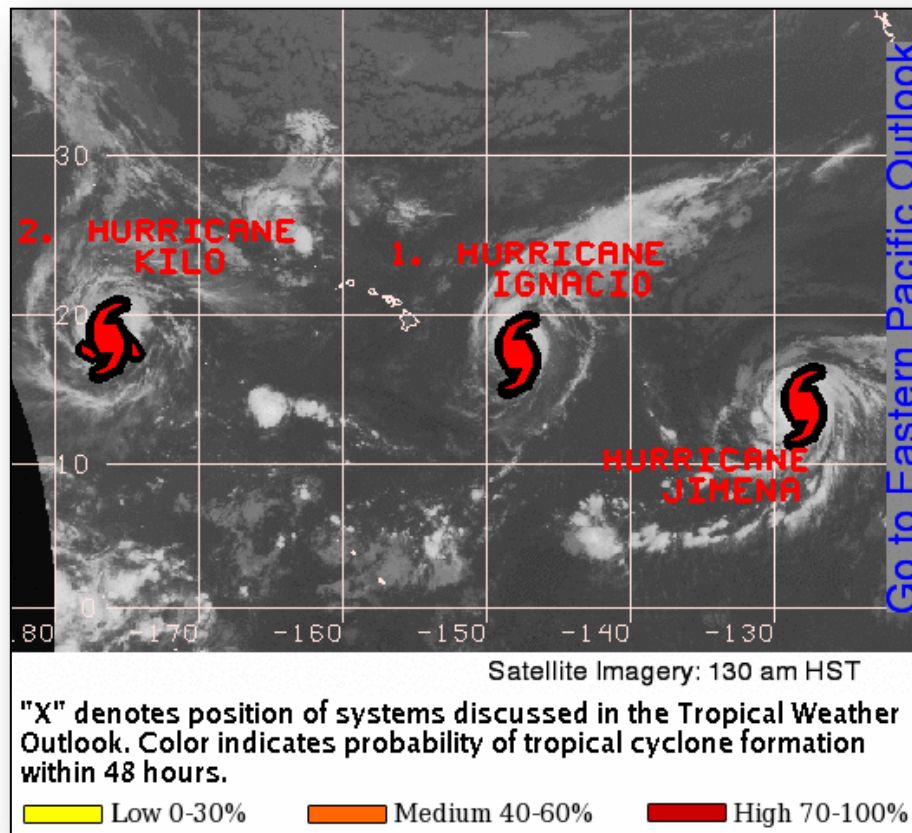
Disturbance 1: (as of 8:00 a.m. EDT)

- A broad area of low pressure located several hundred miles SSW of Manzanillo, Mexico
- Gradually becoming organized
- Environmental conditions appear conducive for slow development and is likely to become a tropical depression by mid-week
- Moving W/WNW at 10 mph
- Formation chance through 48 hours: Low (30%)
- Formation chance through 5 days: High (80%)

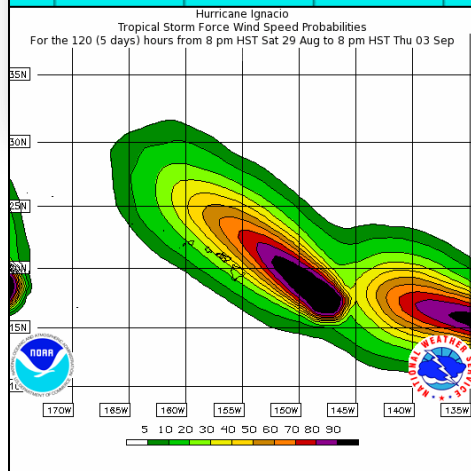
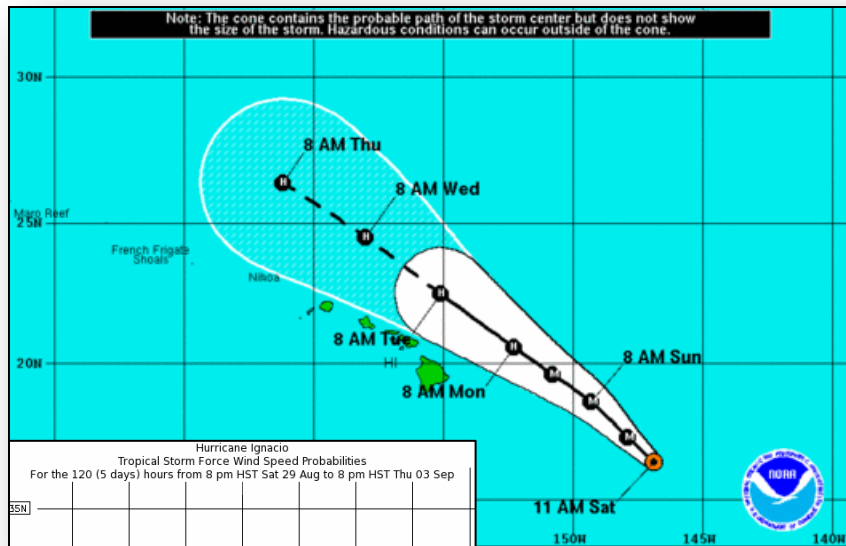
2-Day Tropical Outlook – Central Pacific



FEMA



Hurricane Ignacio (Central Pacific)



Advisory #22A: (as of 8:00 a.m. EDT)

- Located 470 miles ESE of Hilo, HI, moving NW at 8 mph
- Maximum sustained winds 140 mph (Cat 4)
- Motion expected to continue for the next couple of days
- Weakening trend is expected to begin today
- Forecast to pass NE of the Big Island on Monday
- Hurricane-force winds extend outward up to 30 miles from center
- Tropical storm-force winds extend 140 miles from center
- Tropical Storm Watch in effect for Maui and Hawaii Counties
- Rainfall amounts of 2-4 in., isolated max. near 6 in., possible

State/Local Response:

- HI EOC at Watch/Steady State
- No unmet needs identified; no requests for FEMA assistance

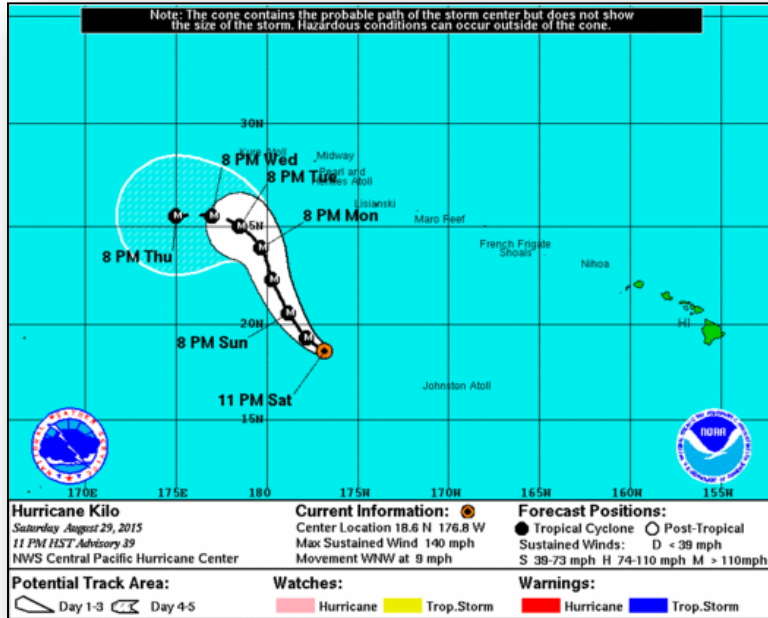
FEMA Region IX Response:

- RWC activated to Enhanced Watch
- RRCC will activate to Level II with select ESFs, DoD and USCG on Monday, August 31
- Specific IMAT personnel deployed Saturday, August 29, with additional personnel deploying today

FEMA HQ Response:

- NRCC not activated; NWC at Watch/Steady State (24/7)
- FEMA Logistics: ISB/FSA Advance Party ALPHA Team deploying to DC Hawaii; reporting Aug. 30

Central Pacific – Hurricane Kilo



Advisory #39: (As of 5:00 a.m. EDT)

- Located 405 miles WNW of Johnston Atoll
- Moving WNW at 9 mph
- Maximum sustained winds of 140 mph (Cat 4)
- Kilo will gradually turn toward the NW/WWN
- Little change in strength next 12 hours then slight weakening through next 48 hours
- Hurricane-force winds extend outward 70 miles
- Tropical storm-force winds extend outward 155 miles

TeePee Springs Fire – ID



Fire Name (County)	Location	Acres burned	% Contained	FMAG	Evacuations	Structures Lost / Threatened	Fatalities / Injuries
TeePee Springs (Idaho County)	In & around communities of Riggins, ID (pop. 413)	48,568	25%	FEMA-XXXX-FM-ID Approved Aug 29	Mandatory/Voluntary 413 (w/60 displaced)	0/300 homes	0/0

Current Situation:

- Approximately 80 percent of the threatened homes are primary residences and 20 percent are secondary homes
- Potential impacts to critical public infrastructure to include roads, bridges, cell towers, radio towers, power distribution lines, water, sewer and various local businesses in the area
 - Also threatening critical wildlife habitat for salmon, steelhead trout, bull trout and big horn sheep
- Mandatory evacuation of 413 people (60 displaced)

Response:

- ID EOC is at Phase I (Standby) for Wildfire support (M-F; 10:00 a.m. to 6:30 p.m. EDT)



Wildfire Summary



Fire Name (County)	FMAG #	Acres burned	% Contained	Evacuations (Residents)	Structures Threatened	Structures Damaged/ Destroyed	Fatalities / Injuries
Washington (3)							
Kettle Complex (Ferry County)	FEMA-5101-FM-WA Approved Aug 14 FEMA-5108-FM-WA (Renner Fire) Approved Aug 21	66,084 (NC)	17% (NC)	Mandatory/ Voluntary 334	4,130 (2,600 homes)	0/2 (1 home)	0/4
Colville Complex (Stevens County)	FEMA-5103-FM-WA Approved Aug 14	11,522 (+217)	45% (NC)	None	449 (294 homes)	22/ 18 (2 homes)	0/1
Okanogan Complex (Okanogan County)	FEMA-5104-FM-WA Approved Aug 14 FEMA-5106-FM-WA (Twisp River Fire) Approved Aug 19	505,375 (+33,029)	22-25%	Mandatory/ Voluntary 184 (-504)	11,625 (10,400 homes)	0/318 (123 homes)	3/5
Oregon (2)							
Canyon Creek Complex (Grant County) FINAL	FEMA-5102-FM-OR Approved Aug 15	101,465 (+14,320)	49% (+5)	Evacuations Lifted	100 homes	50 / 54 (43 homes)	0/3
Grizzly Bear Complex (Wallowa County)	FEMA-5107-FM-OR Approved Aug 21	71,959 (-462)	10% (NC)	Evacuations Lifted	470 (400 homes)	0/ 33 (5 homes)	0/6
Idaho (1)							
TeePee Springs Fire (Idaho County)	FEMA-XXXX-FM-ID Approved Aug 29	48,568	25%	Mandatory/ Voluntary 431	300 homes	0/0	0/0

Disaster Requests & Declarations

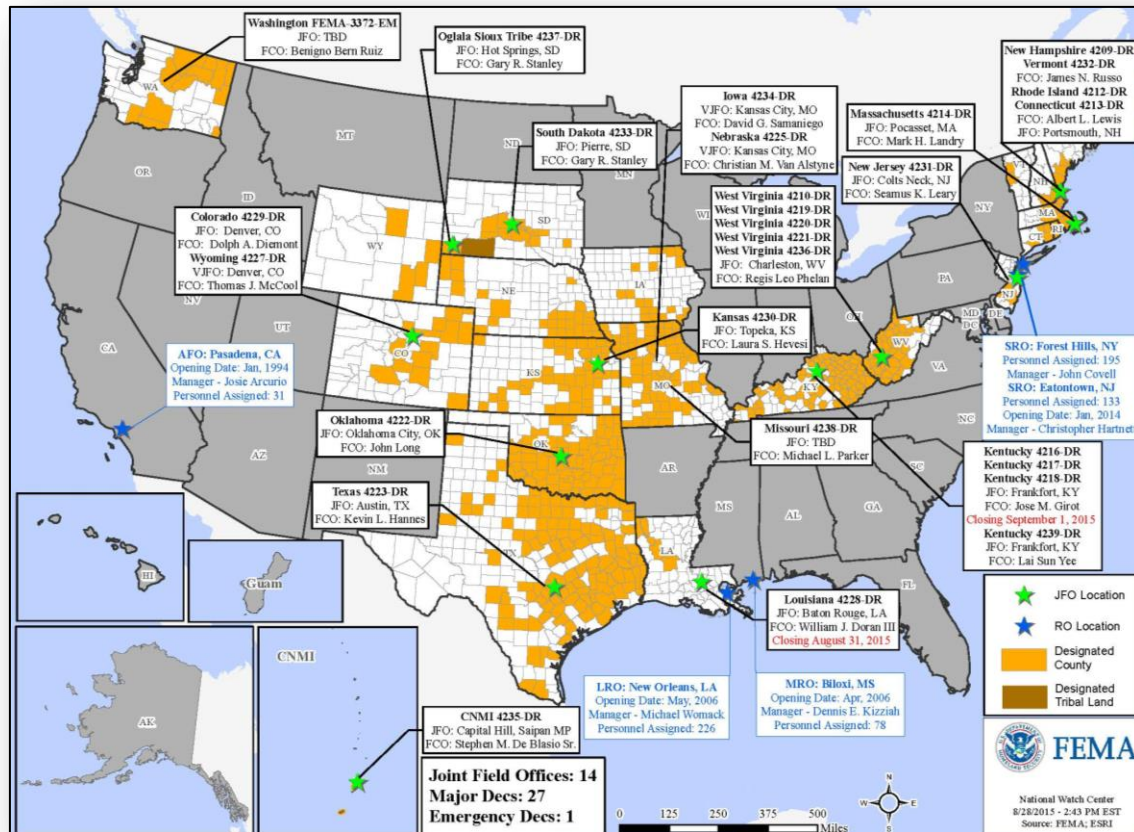


Declaration Requests in Process		Requests APPROVED (since last report)	Requests DENIED (since last report)
1	Date Requested	0	0
FL – DR Severe Storms and Flooding	August 25, 2015		

Open Field Offices as of Aug 30



FEMA

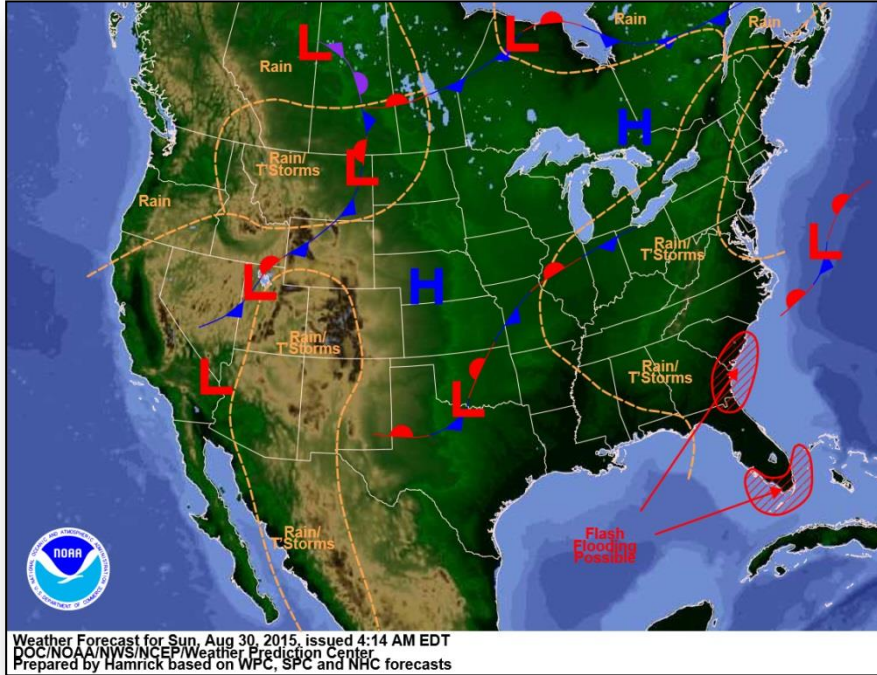


Joint Preliminary Damage Assessments

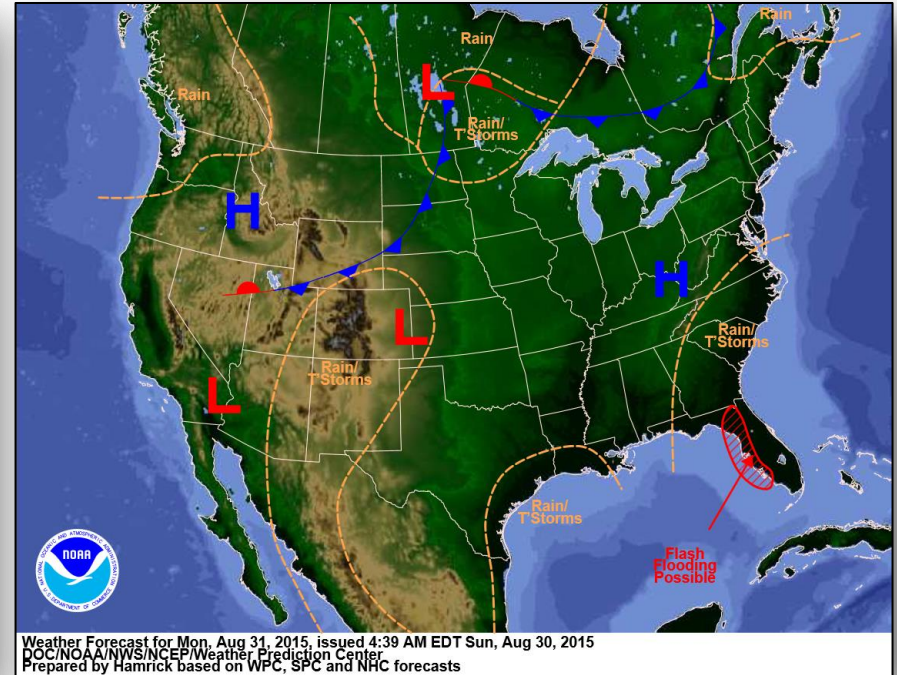


Region	State / Location	Event	I/PA	Number of Counties		Start – End
				Requested	Complete	
IV	FL	Heavy Rain & Flooding July 26, 2015 & continuing	IA	5	5	8/12 - 8/19
			PA	5	0	TBD

National Weather Forecast

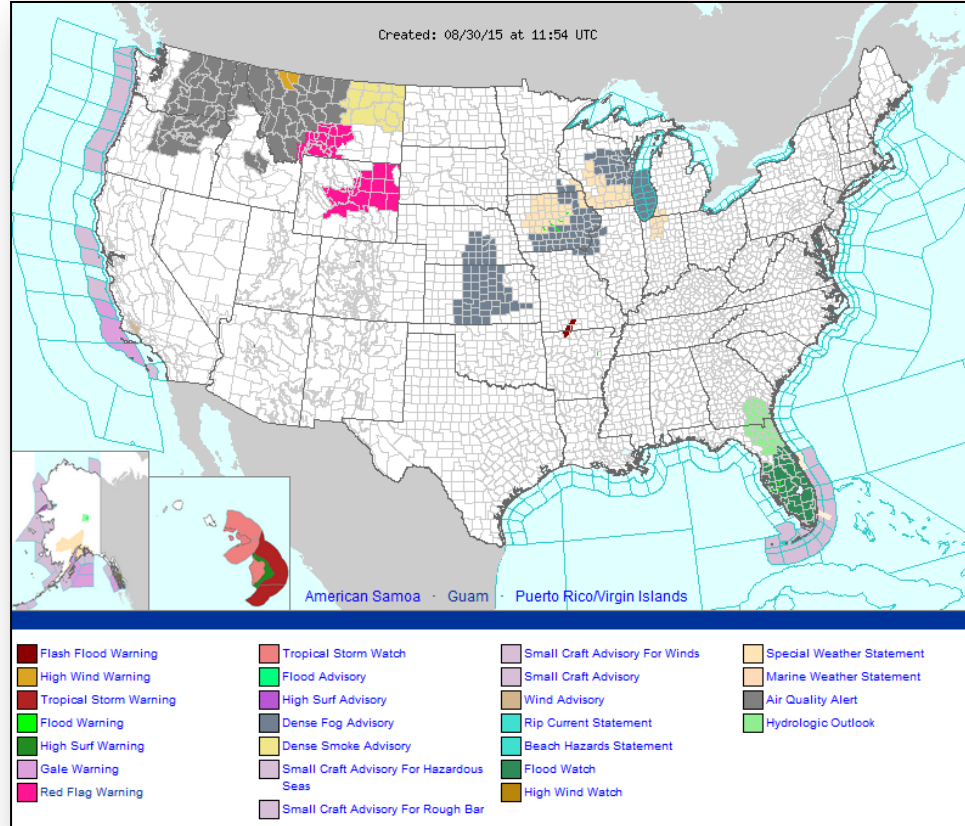


Today

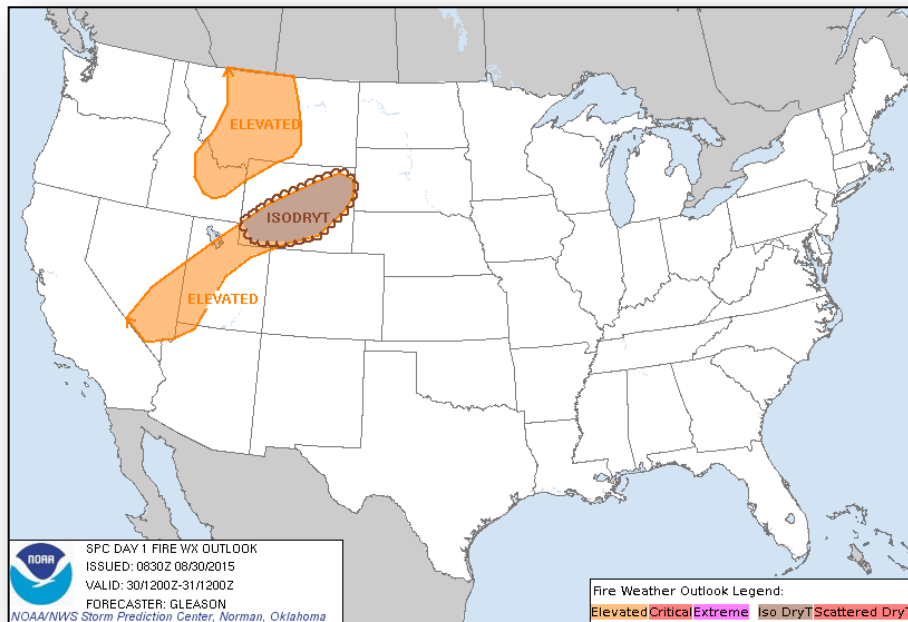


Tomorrow

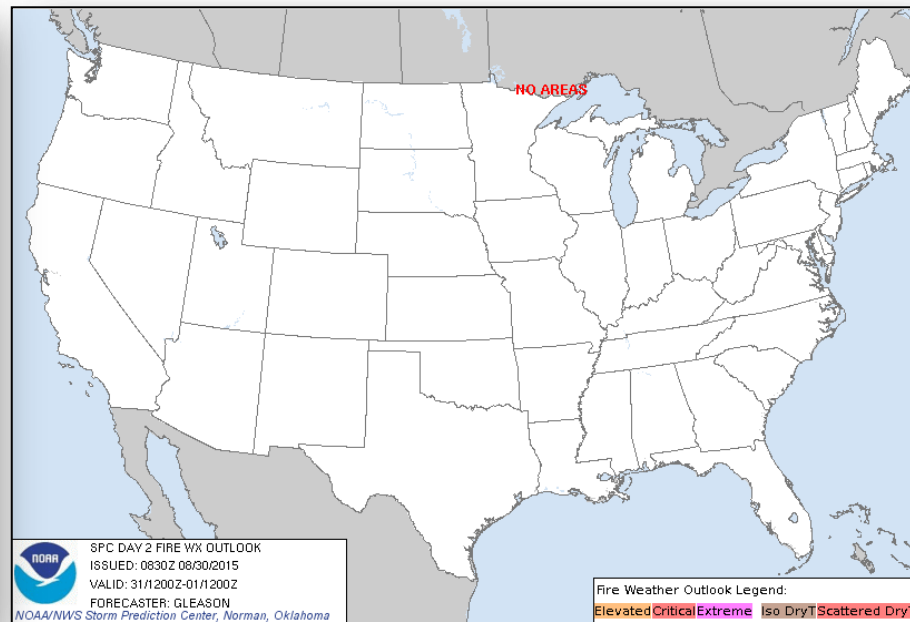
Active Watches/Warnings



Fire Weather Outlook, Days 1-2

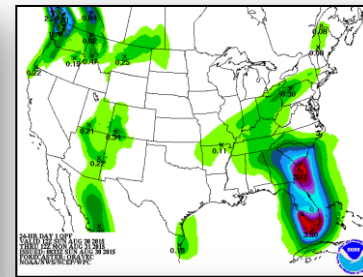
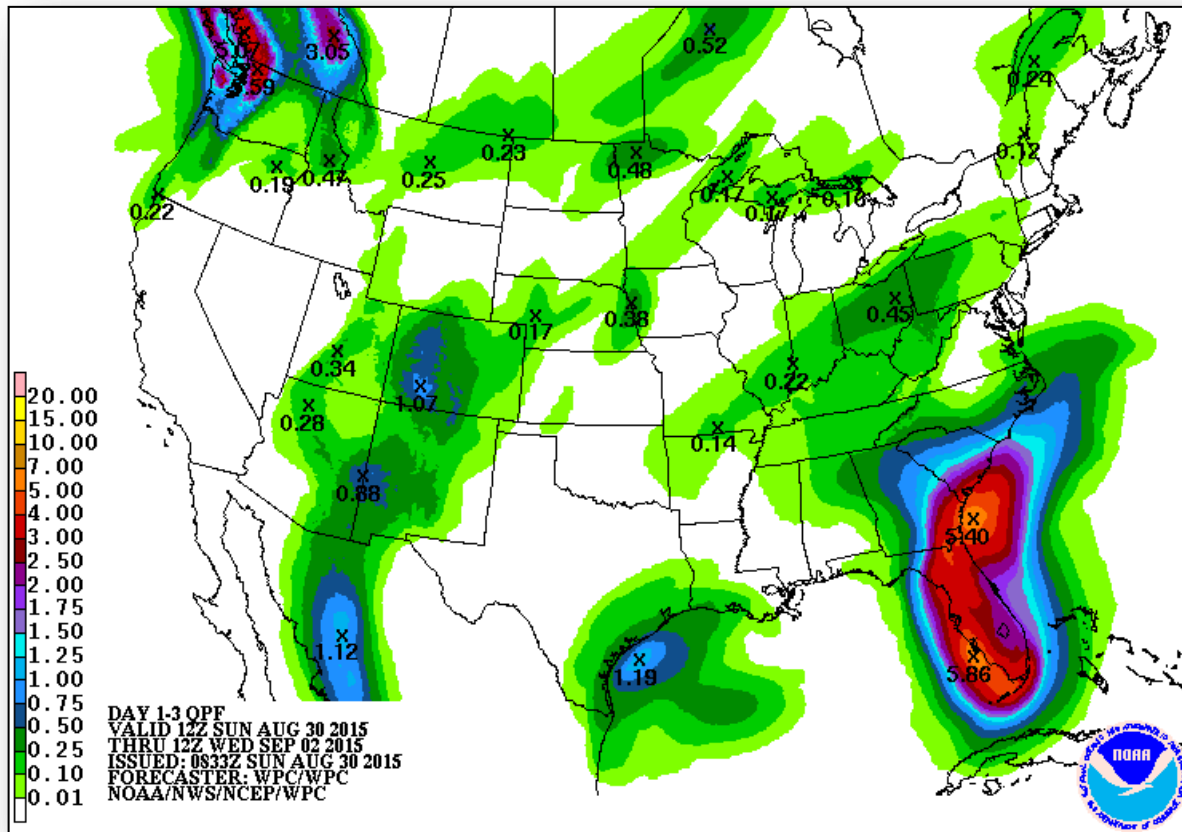


Today

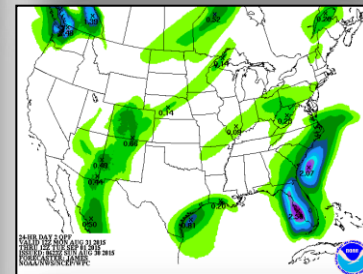


Tomorrow

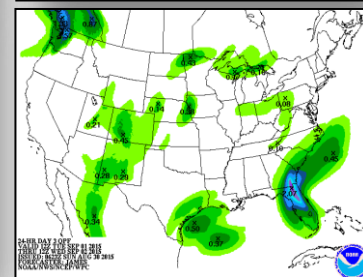
Precipitation Forecast, 1-3 Day



Day 1



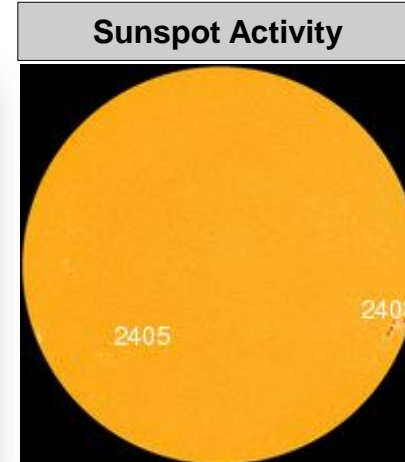
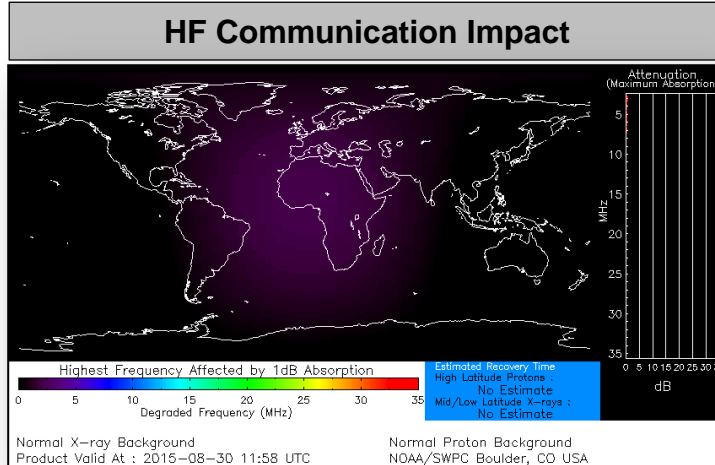
Day 2



Day 3

Space Weather

	Past 24 Hours	Current	Next 24 Hours
Space Weather Activity:	Minor	None	None
• Geomagnetic Storms	None	None	None
• Solar Radiation Storms	None	None	None
• Radio Blackouts	R1	None	None



FEMA Readiness – Deployable Teams /Assets



Deployable Teams/Assets									
Resource	Status	Total	FMC Available		Partially Available	Not Available	Detailed, Deployed, Activated	Comments	Rating Criterion
FCO		35	9	26%	0	1	25		OFDC Readiness: FCO Green Yellow Red Type 1 3+ 2 1 Type 2 4+ 3 2 Type 3 4 3 2 FDRC 3 2 1
FDRC		9	5	56%	0	0	4		
US&R		28	27	96%	0	1	0	NM-TF1 (Red) – Personnel shortages	<ul style="list-style-type: none"> • Green = Available/FMC • Yellow = Available/PMC • Red = Out-of-Service • Blue = Assigned/Deployed
National IMAT		3	3	100%	0	0	0		<ul style="list-style-type: none"> • Green: 3 avail • Yellow: 1-2 avail • Red: 0 avail (<i>Individual N-IMAT red if 50% of Section Chiefs and/or Team Leader is unavailable for deployment.</i>)
Regional IMAT		13	3	23%	1	0	9	<p>Deployed: RI to NH/MA Aug 6 - TBD (training but FMC) RII (Team A) to CAD RIV (Team 1) deployed to KY RVI (Team 1 & 2) deployed to TX RVII deployed to MO RVIII (Team 1) deployed to SD & CO RIX (Teams 1 & 2) deployed to CNMI RX (Team 1) deployed to WA</p> <p>Partially Mission Capable: RV returned to region (Reconstituting)</p>	<ul style="list-style-type: none"> • Green: 7 or more avail • Yellow: 4 - 6 teams available • Red: > 8 teams deployed/unavailable <p><i>R-IMAT also red if TL Ops/Log Chief is unavailable & has no qualified replacement</i></p>
MCOV		59	47	80	0	12	0	MCOV unit in TX no longer deployed	<ul style="list-style-type: none"> • Green = 80 – 100% avail • Yellow = 60 – 79% avail • Red = 59% or below avail • Readiness remains 95%

FEMA Readiness – National/Regional Teams



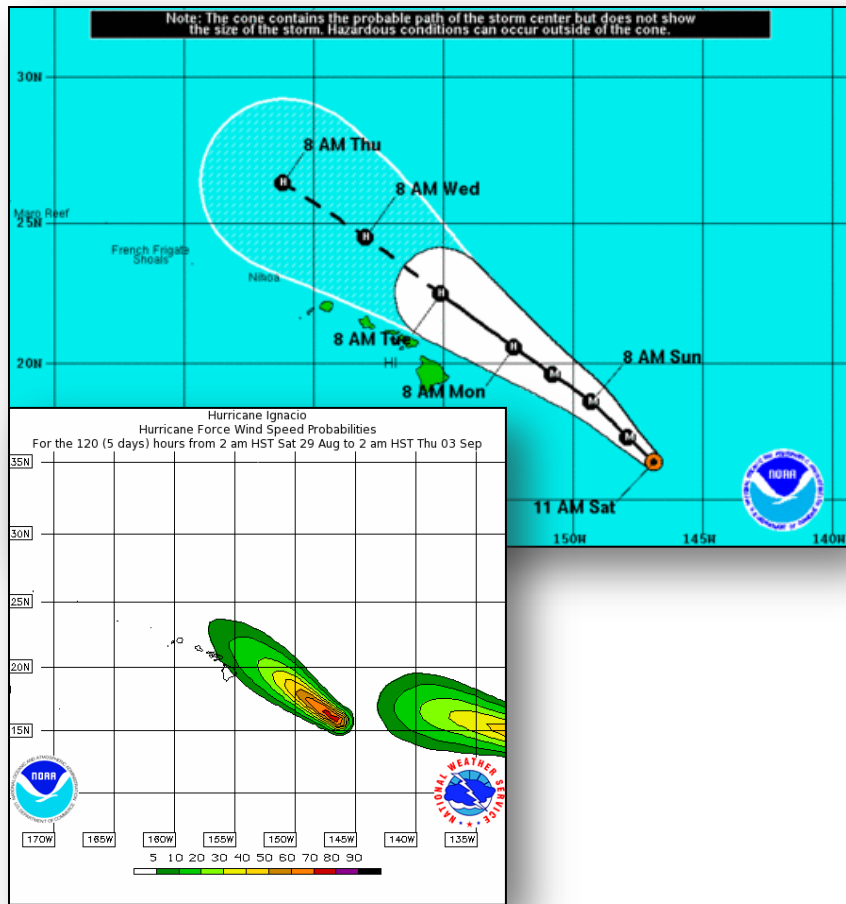
National/Regional Teams									
Resource	Status	Total	FMC Available		Partially Available	Not Available	Status	Comments	Rating Criterion
NWC		5	5	100%	0	0	Not Activated		<div>• Green = FMC</div> <div>• Yellow = PMC</div> <div>• Red = NMC</div>
NRCC		2	344	89%	0	44	Not Activated		
HLT		1	N/A	N/A	0	0	Activated		
DEST							Not Activated		
RRCCs		10	10	100%	0	0	Activated		
RWCs/MOCs		10	10	100%	0	0	Activated	Region IV Enhanced Watch Region IX Enhanced Watch	



FEMA

FEMA's mission is to support our citizens and first responders to ensure that as a nation we work together to build, sustain, and improve our capability to prepare for, protect against, respond to, recover from, and mitigate all hazards.

Hurricane Ignacio (Central Pacific)



Advisory #22: (as of 5:00 a.m. EDT)

- Located 495 miles ESE of Hilo, HI, moving NW at 8 mph
- Maximum sustained winds 145 mph (Cat 4)
- Motion expected to continue for the next couple of days
- Weakening trend is expected to begin today
- Forecast to pass NE of the Big Island on Monday
- Hurricane-force winds extend outward up to 30 miles from center
- Tropical storm-force winds extend 140 miles from center
- Tropical Storm Watch in effect for Maui and Hawaii Counties
- Rainfall amounts of 2-4 in., isolated max. near 6 in., possible

State/Local Response:

- HI EOC at Watch/Steady State
- No unmet needs identified; no requests for FEMA assistance

FEMA Region IX Response:

- RWC activated to Enhanced Watch
- RRCC will activate to Level II with select ESFs, DoD and USCG on Monday, August 31
- Specific IMAT personnel deployed Saturday, August 29, with additional personnel deploying today

FEMA HQ Response:

- NRCC not activated; NWC at Watch/Steady State (24/7)
- FEMA Logistics: ISB/FSA Advance Party ALPHA Team deploying to DC Hawaii; reporting Aug. 30