

The Disaster Center is dedicated to the idea that disaster mitigation is cost effective and individuals pursuing their own interest are the greatest potential force for disaster reduction.

Please consider making a small donation to the Disaster Center



When disaster mitigation is cost effective, we are on the road to bringing disasters to an end.



FEMA

Daily Operations Briefing

Monday, August 31, 2015

8:30 a.m. EDT

Significant Activity: Aug 30-31



Significant Events: Hurricane Ignacio

Tropical Activity:

- Atlantic: Hurricane Fred
- Eastern Pacific: Hurricane Jimena, Disturbance 1
- Central Pacific: Hurricane Kilo; Hurricane Ignacio
- Western Pacific: No significant activity affecting U.S. territories

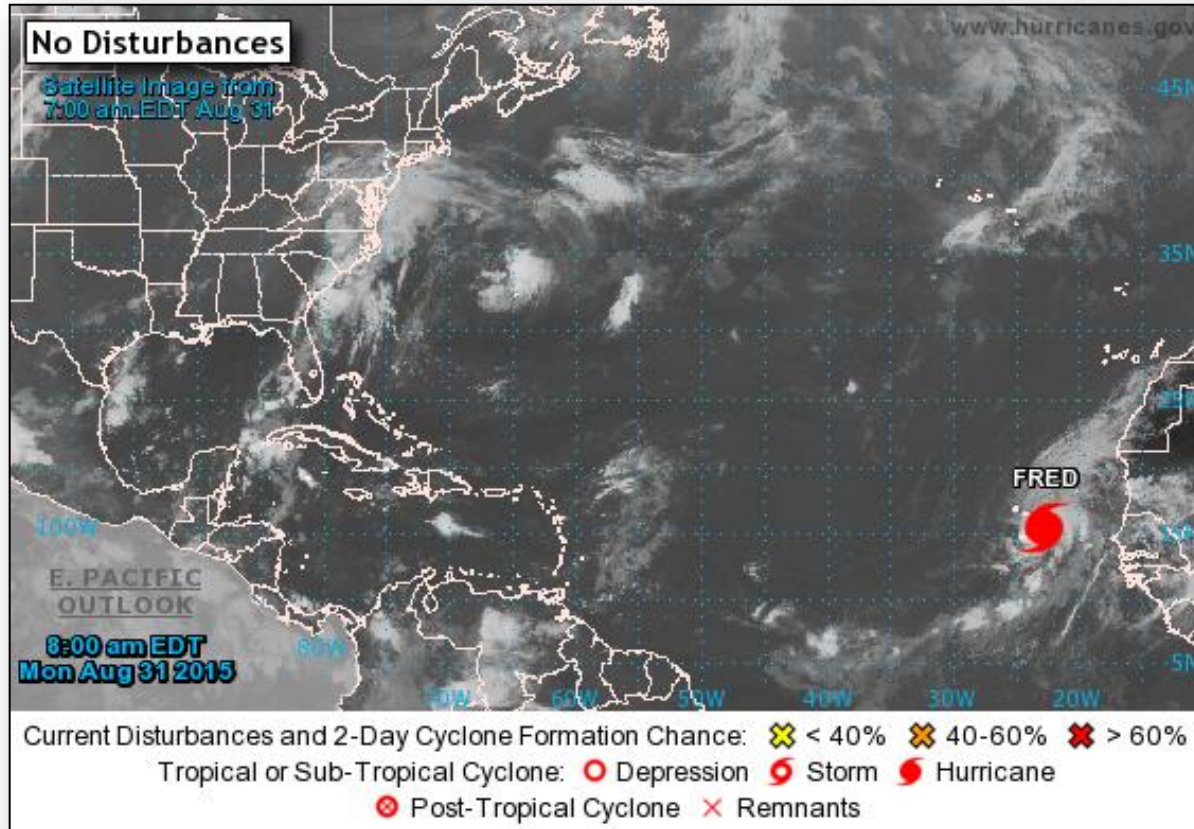
Significant Weather:

- Flash Flooding – Coastal Carolinas, Eastern Florida
- Red Flag Warnings – None
- Elevated/Critical Fire Weather areas – None
- Space weather: Space weather for the past 24 hours has been minor - radio blackouts reaching the R1 level occurred; No space weather for the next 24 hours is predicted

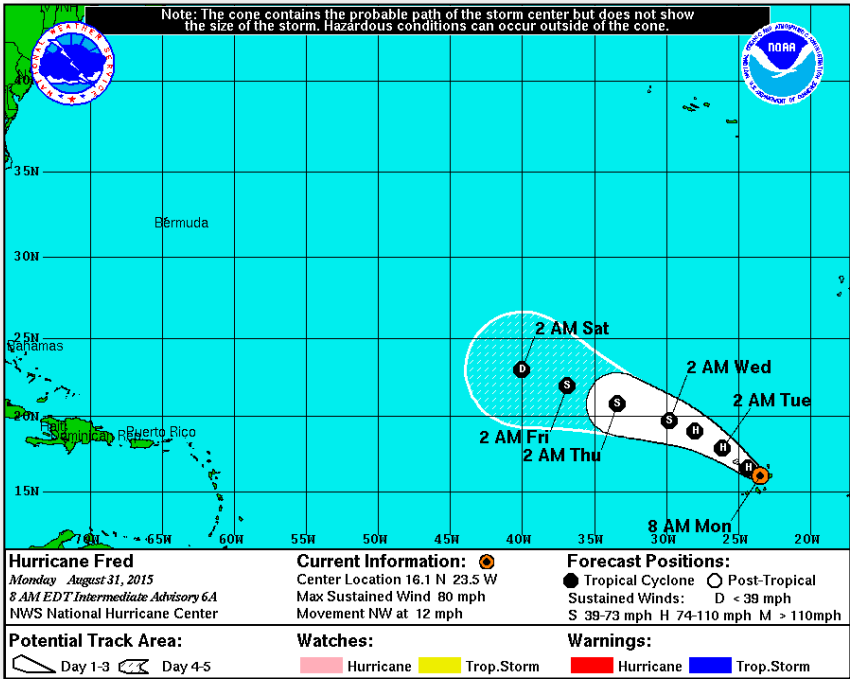
Declaration Activity:

- FMAG for Tepee Springs Fire, ID

2-Day Tropical Outlook – Atlantic



Atlantic – Hurricane Fred



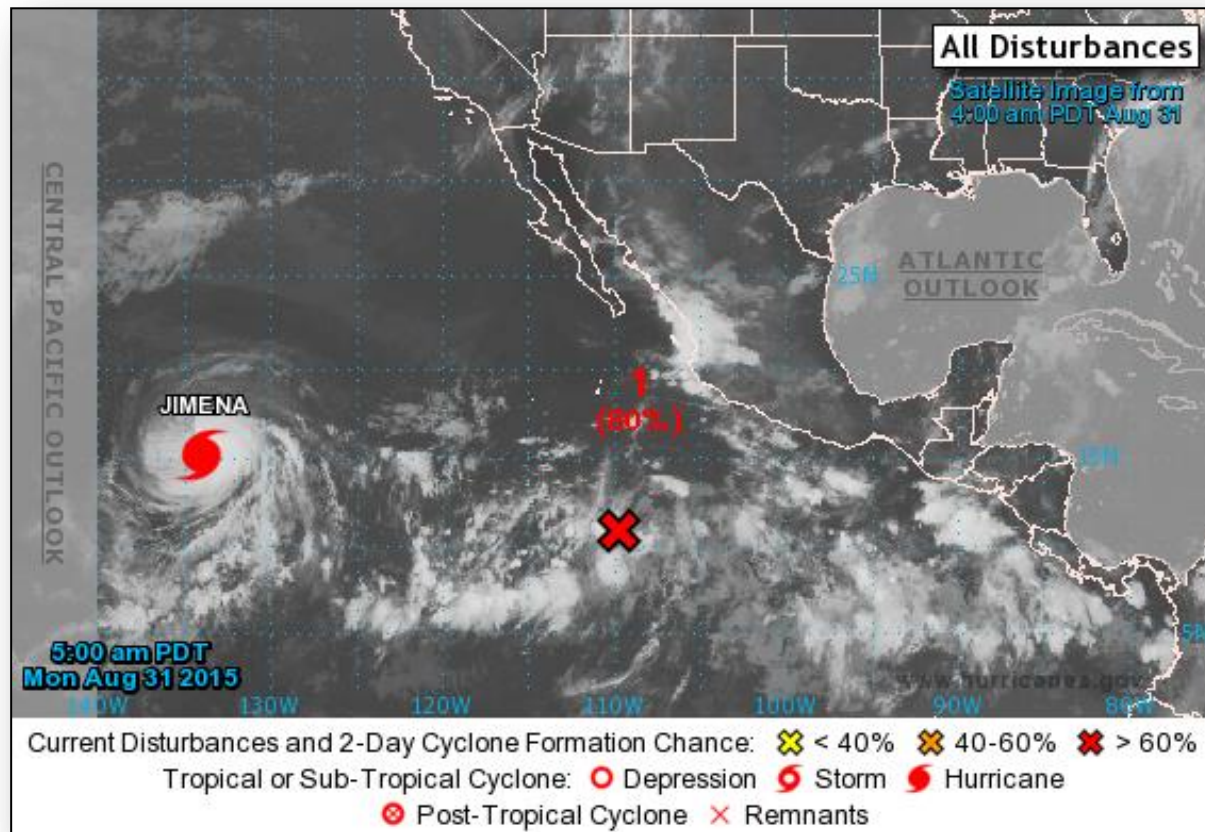
Advisory #6a: (As of 8:00 a.m. EDT)

- Located 40 miles S of the Cape Verde Islands
- Maximum sustained winds at 80 mph with higher gusts
- Moving NW at 12 mph
- NW is expected to continue through Tuesday
- Hurricane-force winds extend outward up to 15 miles from the center
- Tropical storm-force winds extend outwards up to 80 miles
- Hurricane Warning is in effect for the Cape Verde Islands

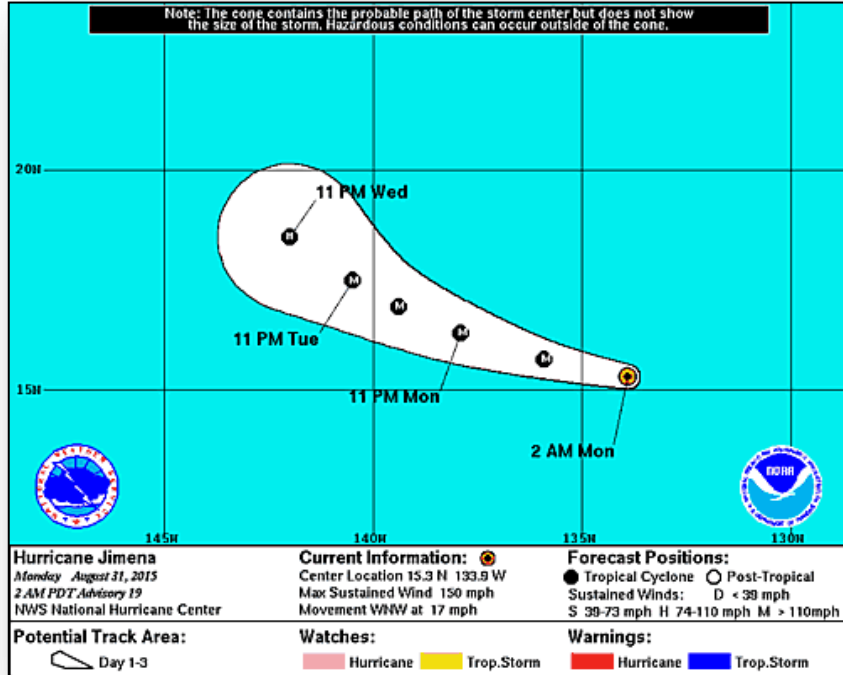
2-Day Tropical Outlook – Eastern Pacific



FEMA



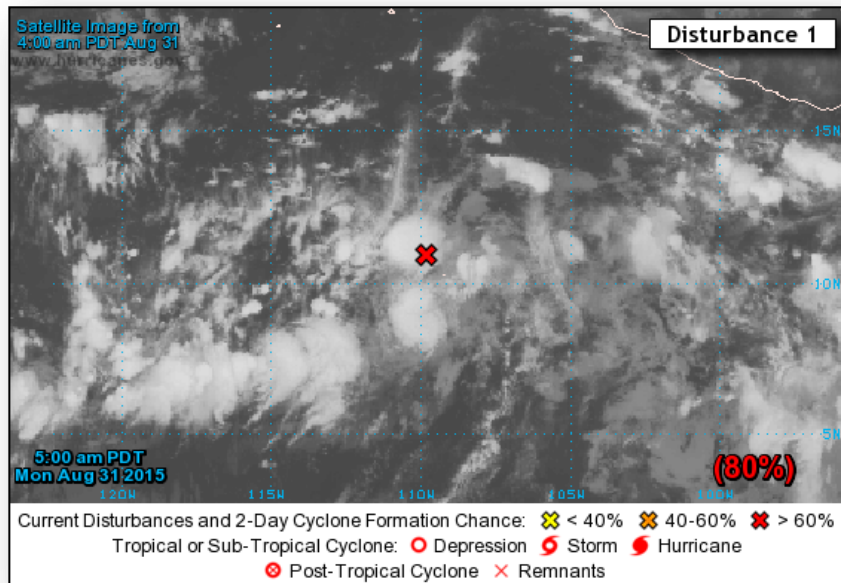
Eastern Pacific – Hurricane Jimena



Advisory #19: (as of 5:00 a.m. EDT)

- Located 1,430 miles E of Hilo, Hawaii
- Moving WNW at 17 mph
- Maximum sustained winds 150 mph (Cat 4)
- Hurricane expected to continue in same direction at slower forward speed
- Slow weakening is forecast during the next 48 hours
- Hurricane-force winds extend outward up to 60 miles
- Tropical storm-force winds extend outward up to 175 miles
- No coastal watches or warnings in effect

Two Day Tropical Outlook – Eastern Pacific



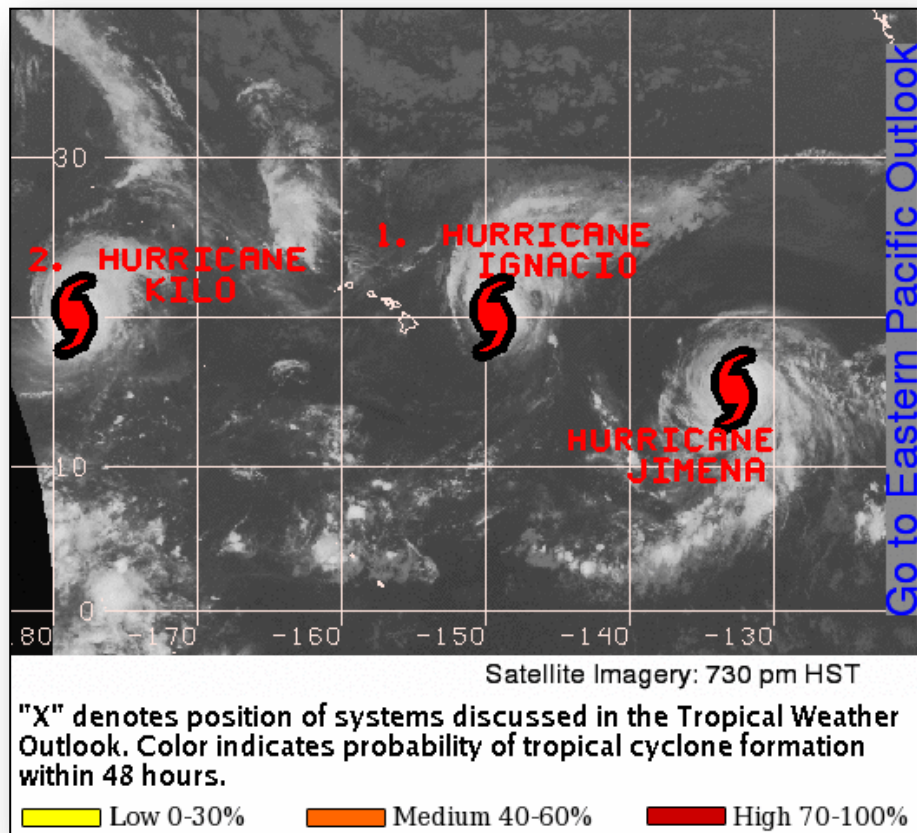
Disturbance 1: (as of 8:00 a.m. EDT)

- Located 650 miles SSW of Manzanillo, Mexico
- Moving NW at 10 mph
- Environmental conditions are conducive for development
- Likely to become a tropical depression during the next day or two
- Formation chance through 48 hours: High (80%)
- Formation chance through 5 days: High (90%)

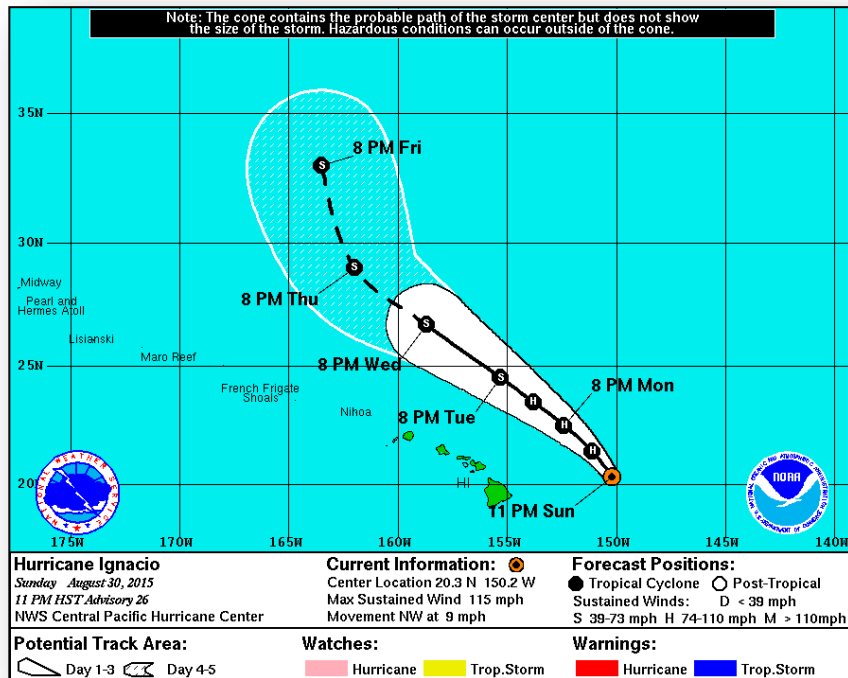
2-Day Tropical Outlook – Central Pacific



FEMA



Central Pacific – Hurricane Ignacio



Advisory #26: (as of 5:00 a.m. EDT)

- Located 320 miles E of Hilo, HI, moving NW at 9 mph
- Maximum sustained winds 115 mph (Cat 3)
- Motion expected to continue for the next couple of days
- Will pass E and NE of the main Hawaiian islands over the next couple of days
- Rapid weakening is expected through Monday
- Hurricane-force winds extend outward up to 45 miles from center
- Tropical storm-force winds extend 175 miles
- No watches and warnings for HI

State/Local Response:

- HI EOC at Watch/Steady State
- No unmet needs identified; no requests for FEMA assistance

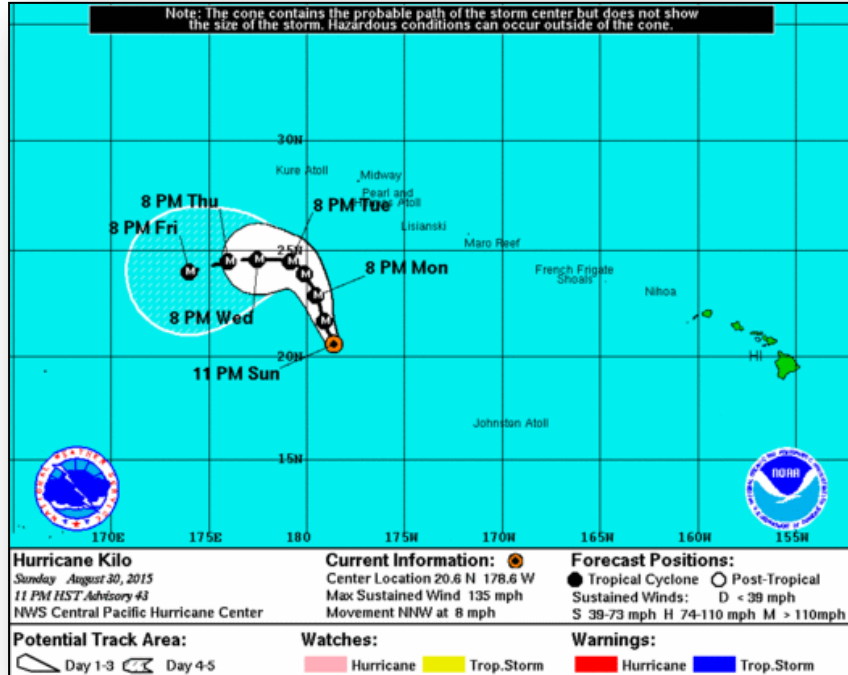
FEMA Region IX Response:

- RWC activated to Enhanced Watch
- RRCC at Watch/Steady State & will not activate today
- Specific IMAT personnel deployed

FEMA HQ Response:

- NRCC at Level III; NWC at Watch/Steady State (24/7)
- FEMA Logistics: ISB/FSA Advance Party ALPHA Team deployed to DC Hawaii

Central Pacific – Hurricane Kilo (*FINAL*)



Advisory #43: (As of 5:00 a.m. EDT)

- Located 530 miles S of Midway Island
- Maximum sustained winds of 135 mph (Cat 4)
- Moving NNW at 8 mph
- General motion expected to continue next 48 hours
- Slight decrease in forward speed
- Hurricane-force winds extend outward 35 miles from center
- Tropical storm-force winds extend outward 160 miles
- No coastal watches and warnings in effect

FMAG Requests and Declarations



Action (since last report)			Total	FMAG No. and State	
Requests DENIED			0		
Requests APPROVED			1	TePee Springs Fire FEMA-5110-FM-ID Approved Aug 29	
Approved FMAG Data					
Year	Current YTD	MTD	Monthly Average	Cumulative Acres Burned YTD	Cumulative Denied FMAGs YTD
2015	29	18	11	167,658	2
Year	Total Previous FY	++ Yearly Average		Total Acres Burned Previous Year	Total Denied FMAGs Previous Year
2014	31	37		152,648	2
* Reflects the 3-year average for current month/ ** Reflects 3-year total average					

TePee Springs Fire – ID



Fire Name (County)	Location	Acres burned	% Contained	FMAG	Evacuations	Structures Lost / Threatened	Fatalities / Injuries
TePee Springs (Idaho County)	Near Riggins, ID (pop. 413)	78,130 (+29,562)	25%	FEMA-5110-FM-ID Approved Aug 29	Mandatory/Voluntary 413 (w/60 displaced)	0/300 homes	0/0

Current Situation:

- Approximately 80 percent of the threatened homes are primary residences and 20 percent are secondary homes
- Potential impacts to critical public infrastructure to include roads, bridges, cell towers, radio towers, power distribution lines, water, sewer and various local businesses in the area
 - Also threatens wildlife habitat for salmon, steelhead trout, bull trout and big horn sheep
- Mandatory evacuation of 413 people (60 displaced)

Response:

- ID EOC is at Phase I (Standby) for Wildfire support (M-F; 10:00 a.m. to 6:30 p.m. EDT)



Wildfire Summary



Fire Name (County)	FMAG #	Acres burned	% Contained	Evacuations (Residents)	Structures Threatened	Structures Damaged/ Destroyed	Fatalities/ Injuries
Washington (3)							
Kettle Complex (Ferry County)	FEMA-5101-FM-WA Approved Aug 14 FEMA-5108-FM-WA (Renner Fire) Approved Aug 21	66,084	17%	Mandatory/ Voluntary 334	4,130 (2,600 homes)	0/2 (1 home)	0/4
Colville Complex (Stevens County)	FEMA-5103-FM-WA Approved Aug 14	11,522	45%	None	449 (294 homes)	22/ 18 (2 homes)	0/1
Okanogan Complex (Okanogan County)	FEMA-5104-FM-WA Approved Aug 14 FEMA-5106-FM-WA (Twisp River Fire) Approved Aug 19	344,772 (-160,603)	22-30%	Mandatory/ Voluntary 688	11,625 (10,400 homes)	0/318 (123 homes)	3/6
Oregon (1)							
Grizzly Bear Complex (Wallowa County)	FEMA-5107-FM-OR Approved Aug 21	74,471 (+2,512)	17% (+7)	Evacuations Lifted	470 (400 homes)	0/ 33 (5 homes)	0/6
Idaho (1)							
TePee Springs Fire (Idaho County)	FEMA-5110-FM-ID Approved Aug 29	78,130 (+29,562)	25%	Mandatory/ Voluntary 431	300 homes	0/0	0/0

Disaster Requests & Declarations



Declaration Requests in Process		Requests APPROVED (since last report)	Requests DENIED (since last report)
1	Date Requested	0	0
FL – DR Severe Storms and Flooding	August 25, 2015		

Disaster Amendments

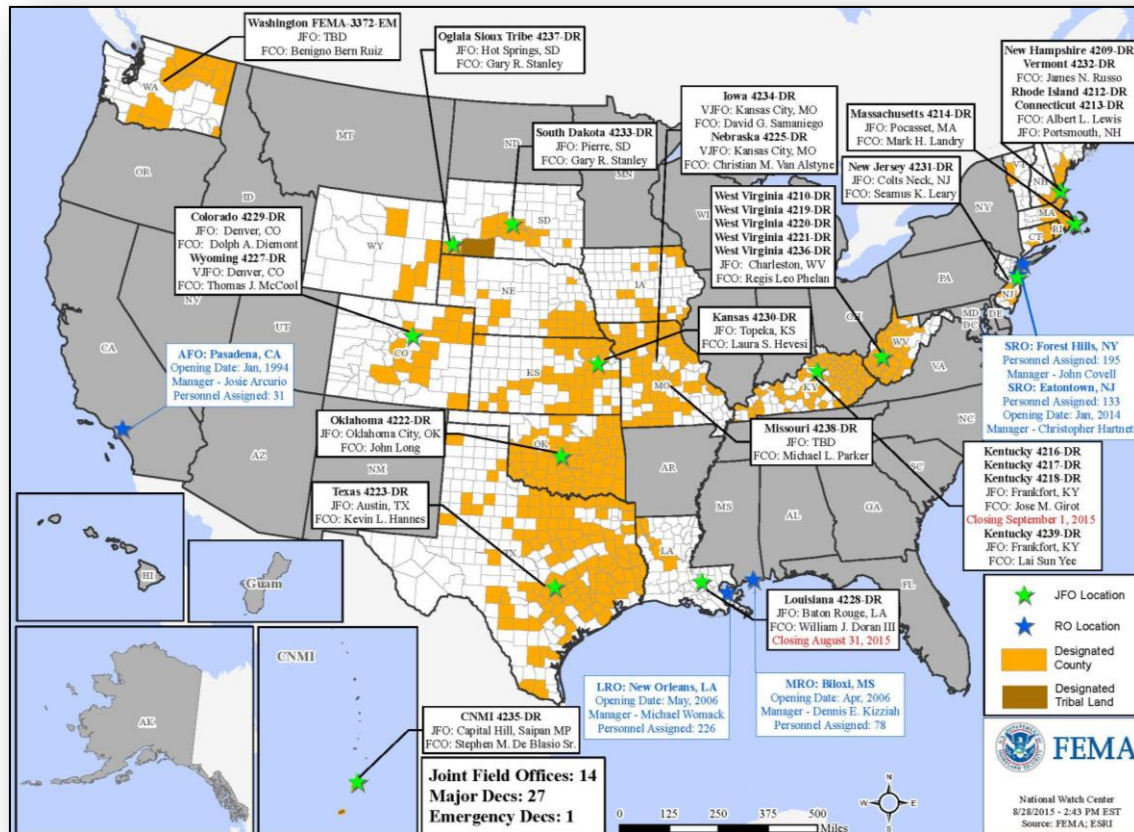


Amendment	Effective Date	Action
Amendment No. 1 to FEMA-4239-DR-KY	August 28, 2015	Adds 3 counties for Individual Assistance

Open Field Offices as of Aug 31



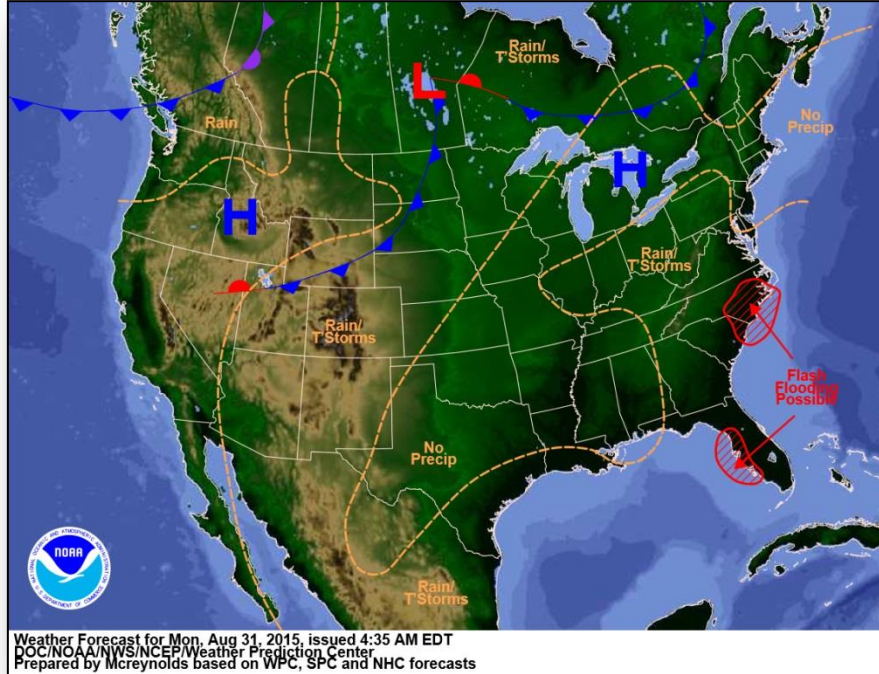
FEMA



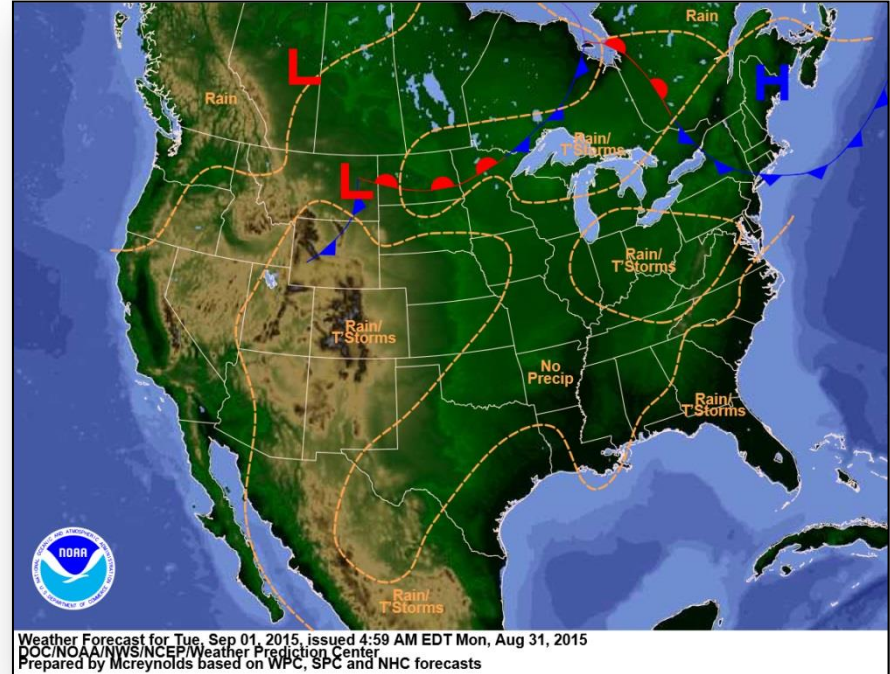
Joint Preliminary Damage Assessments

Region	State / Location	Event	I/PA	Number of Counties		Start – End
				Requested	Complete	
IV	FL	Heavy Rain & Flooding July 26, 2015 & continuing	IA	5	5	8/12 - 8/19
			PA	5	0	TBD

National Weather Forecast



Today

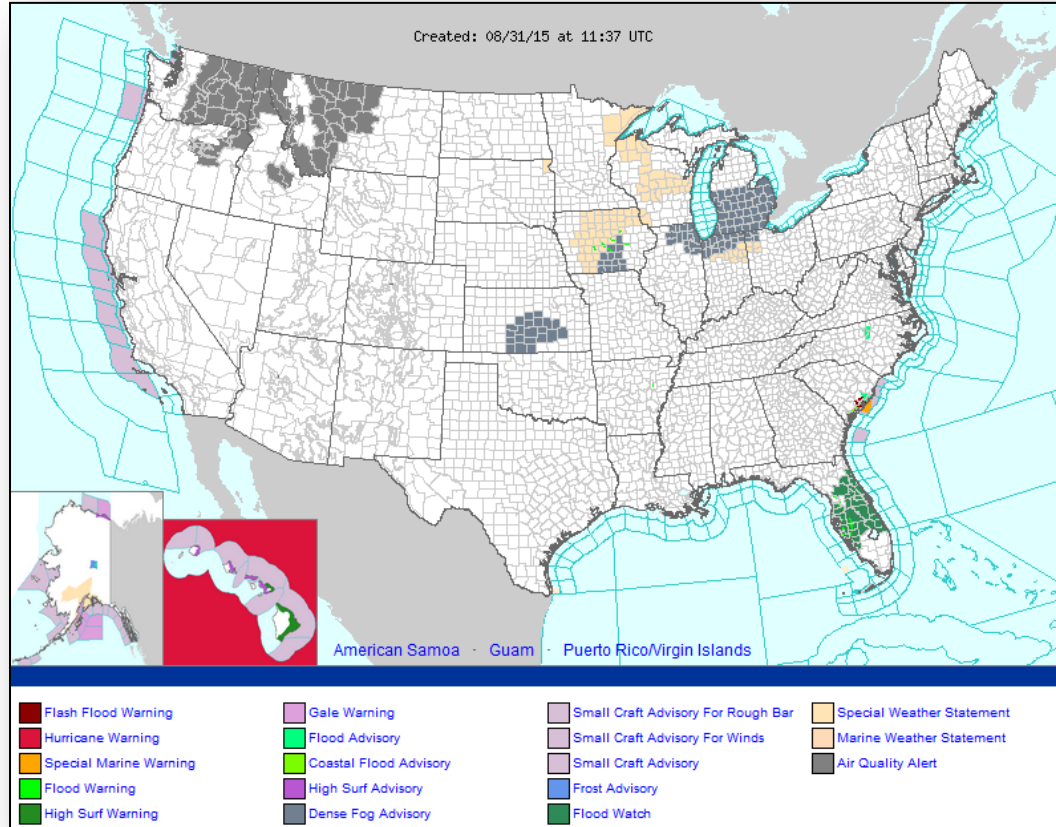


Tomorrow

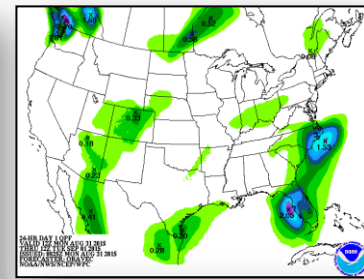
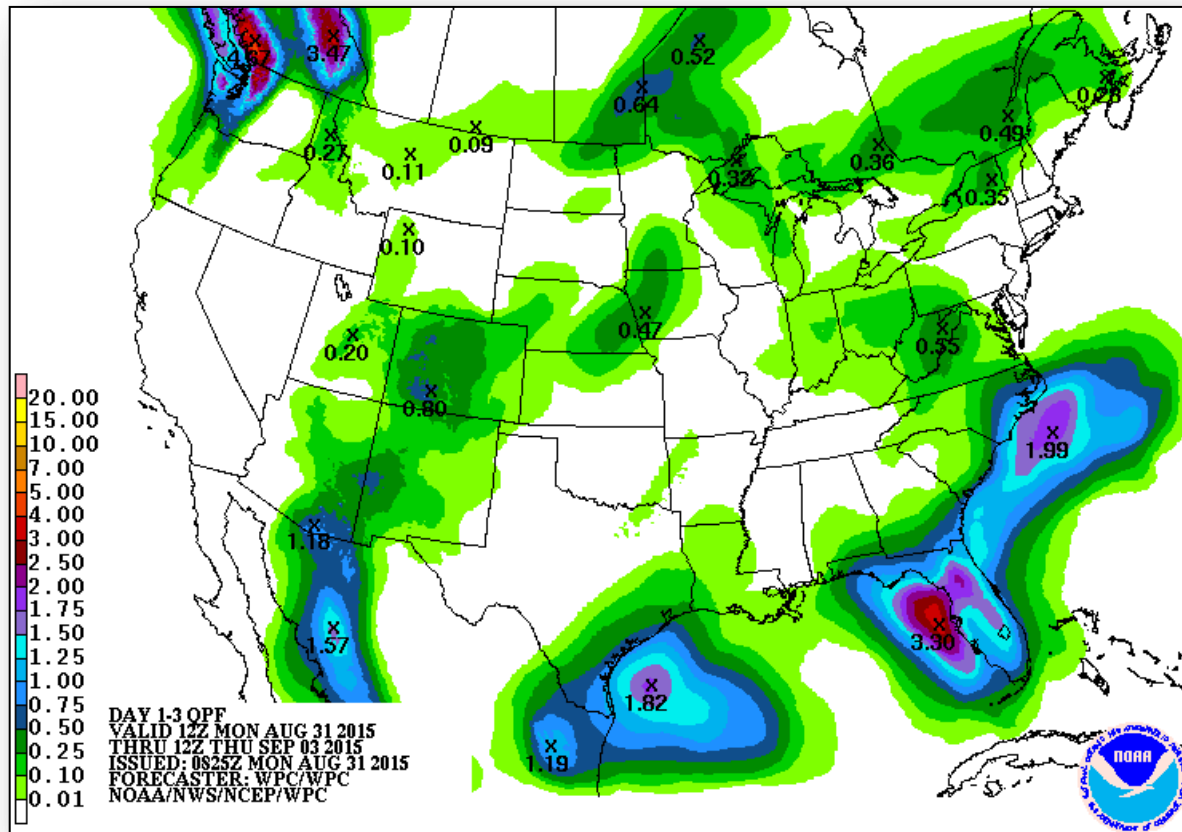
Active Watches/Warnings



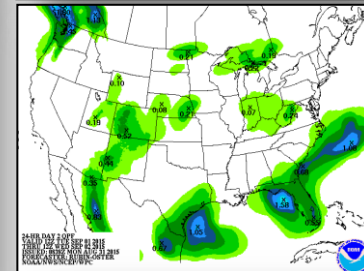
FEMA



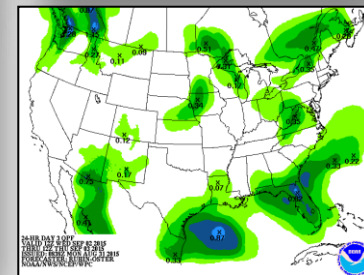
Precipitation Forecast, 1-3 Day



Day 1



Day 2

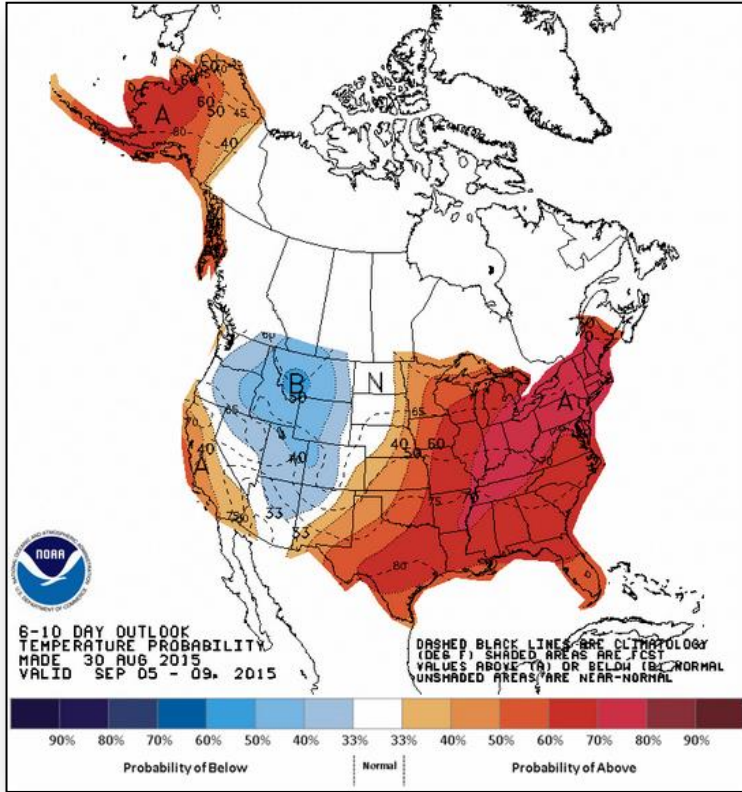


Day 3

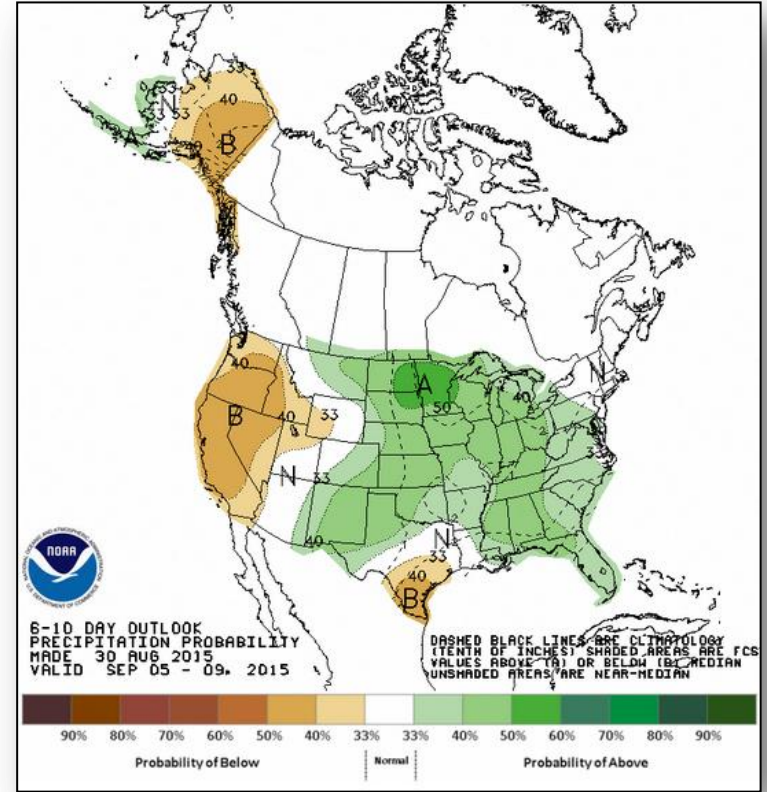
6-10 Day Outlooks



FEMA



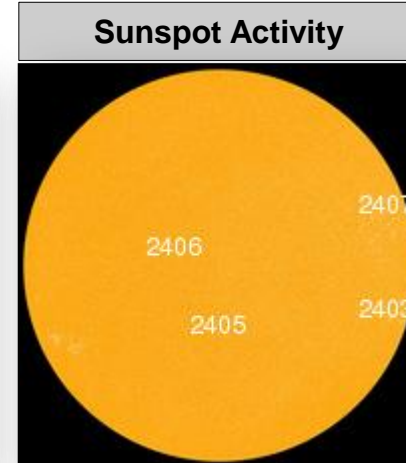
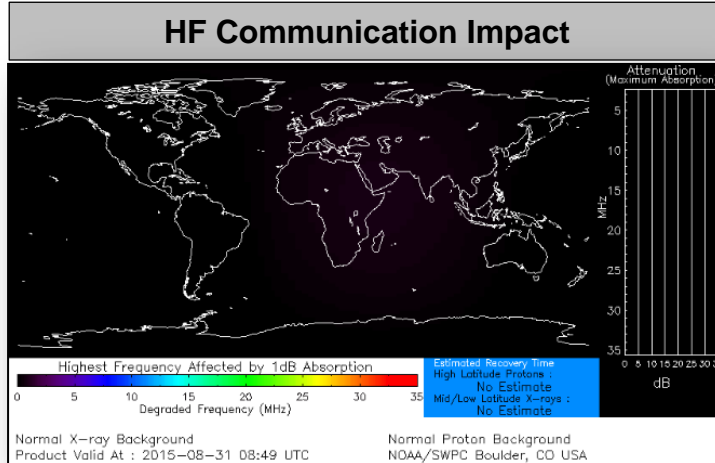
Temperature Probability



Precipitation Probability

Space Weather

	Past 24 Hours	Current	Next 24 Hours
Space Weather Activity:	Minor	None	None
• Geomagnetic Storms	None	None	None
• Solar Radiation Storms	None	None	None
• Radio Blackouts	R1	None	None



FEMA Readiness – Deployable Teams /Assets



Deployable Teams/Assets									
Resource	Status	Total	FMC Available		Partially Available	Not Available	Detailed, Deployed, Activated	Comments	Rating Criterion
FCO		35	9	26%	0	1	25		OFDC Readiness: FCO Green Yellow Red Type 1 3+ 2 1 Type 2 4+ 3 2 Type 3 4 3 2 FDRC 3 2 1
FDRC		9	5	56%	0	0	4		
US&R		28	27	96%	0	1	0	NM-TF1 (Red) – Personnel shortages	<ul style="list-style-type: none"> • Green = Available/FMC • Yellow = Available/PMC • Red = Out-of-Service • Blue = Assigned/Deployed
National IMAT		3	3	100%	0	0	0		<ul style="list-style-type: none"> • Green: 3 avail • Yellow: 1-2 avail • Red: 0 avail (<i>Individual N-IMAT red if 50% of Section Chiefs and/or Team Leader is unavailable for deployment.</i>)
Regional IMAT		13	4	31%	1	0	8	<p>Deployed: RI to NH/MA Aug 6 - TBD (training ,but FMC) RII IMAT-A detailed to Albany, NY, but available RIV (Team 1) deployed to KY RVI (Team 1 & 2) deployed to TX RVII deployed to MO RVIII (Team 1) deployed to SD & CO RIX (Teams 1 & 2) deployed to CNMI RX (Team 1) deployed to WA</p> <p>Partially Mission Capable: RV returned to region (Reconstituting)</p>	<ul style="list-style-type: none"> • Green: 7 or more avail • Yellow: 4 - 6 teams available • Red: > 8 teams deployed/unavailable <p><i>R-IMAT also red if TL Ops/Log Chief is unavailable & has no qualified replacement</i></p>
MCOV		59	47	80	0	12	0	MCOV unit returned from TX	<ul style="list-style-type: none"> • Green = 80 – 100% avail • Yellow = 60 – 79% avail • Red = 59% or below avail • Readiness remains 95%

FEMA Readiness – National/Regional Teams



National/Regional Teams									
Resource	Status	Total	FMC Available		Partially Available	Not Available	Status	Comments	Rating Criterion
NWC		5	5	100%	0	0	Not Activated		• Green = FMC • Yellow = PMC • Red = NMC
NRCC		2	344	89%	0	44	Activated	Level III (Blue Team)	
HLT		1	N/A	N/A	0	0	Activated		
DEST							Not Activated		
RRCCs		10	10	100%	0	0	Not Activated		
RWCs/MOCs		10	10	100%	0	0	Activated	Region IV Enhanced Watch Region IX Enhanced Watch	



FEMA

FEMA's mission is to support our citizens and first responders to ensure that as a nation we work together to build, sustain, and improve our capability to prepare for, protect against, respond to, recover from, and mitigate all hazards.