

The Disaster Center is dedicated to the idea that disaster mitigation is cost effective and individuals pursuing their own interest are the greatest potential force for disaster reduction.

Please consider making a small donation to the Disaster Center



When disaster mitigation is cost effective, we are on the road to bringing disasters to an end.



FEMA

Daily Operations Briefing

Wednesday, September 3, 2014

8:30 a.m. EDT

Significant Activity: Sep 2 – 3

Significant Events: No significant activity

Tropical Activity:

- Atlantic – Tropical Depression Dolly
- Eastern Pacific – Tropical Storm Norbert
- Central Pacific – No tropical cyclones expected through Thursday night

Significant Weather:

- Slight risk of severe thunderstorms – Northern Plains & Upper Mississippi Valley
- Flash flooding possible – Upper Mississippi Valley & Great Lakes
- Critical Fire Weather: WY
- Red Flag Warning: OR, CA, & WY

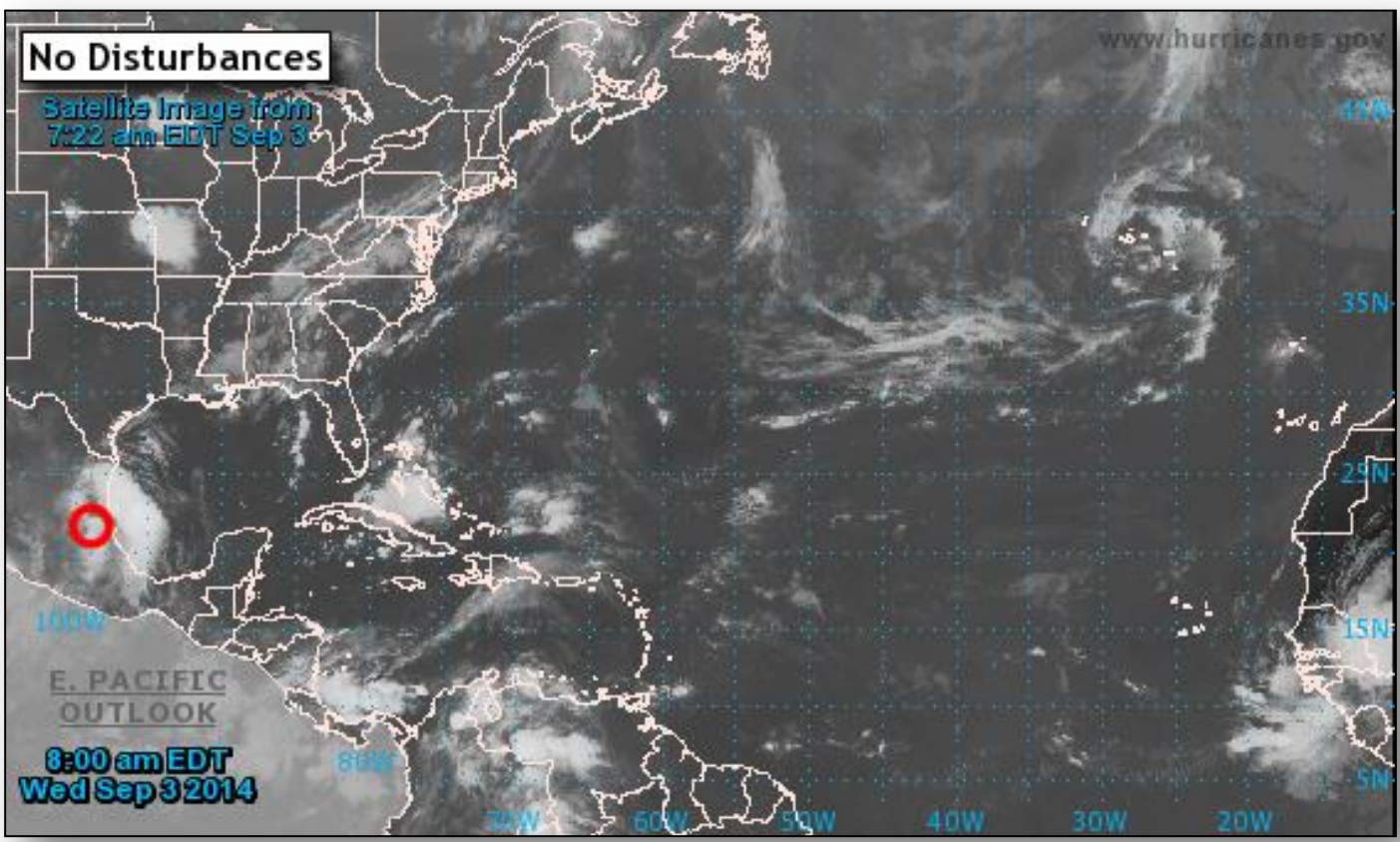
FEMA Readiness: No Activity

Declaration Activity: Major Disaster Declaration Request – Guam

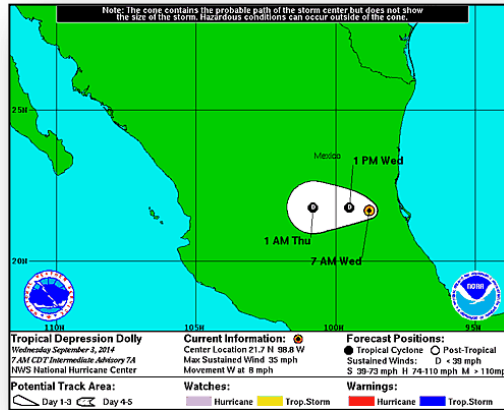
2-Day Tropical Outlook – Atlantic



FEMA

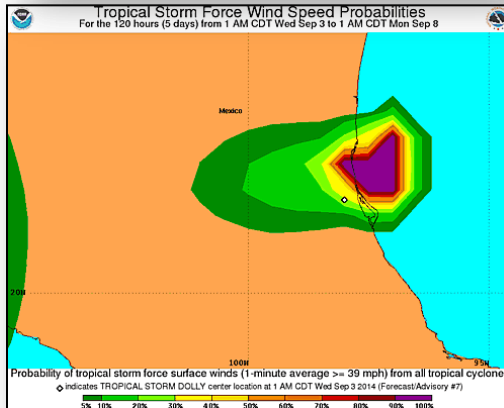


Tropical Depression Dolly – Atlantic



Tropical Storm Dolly (as of 8:00 a.m. EDT)

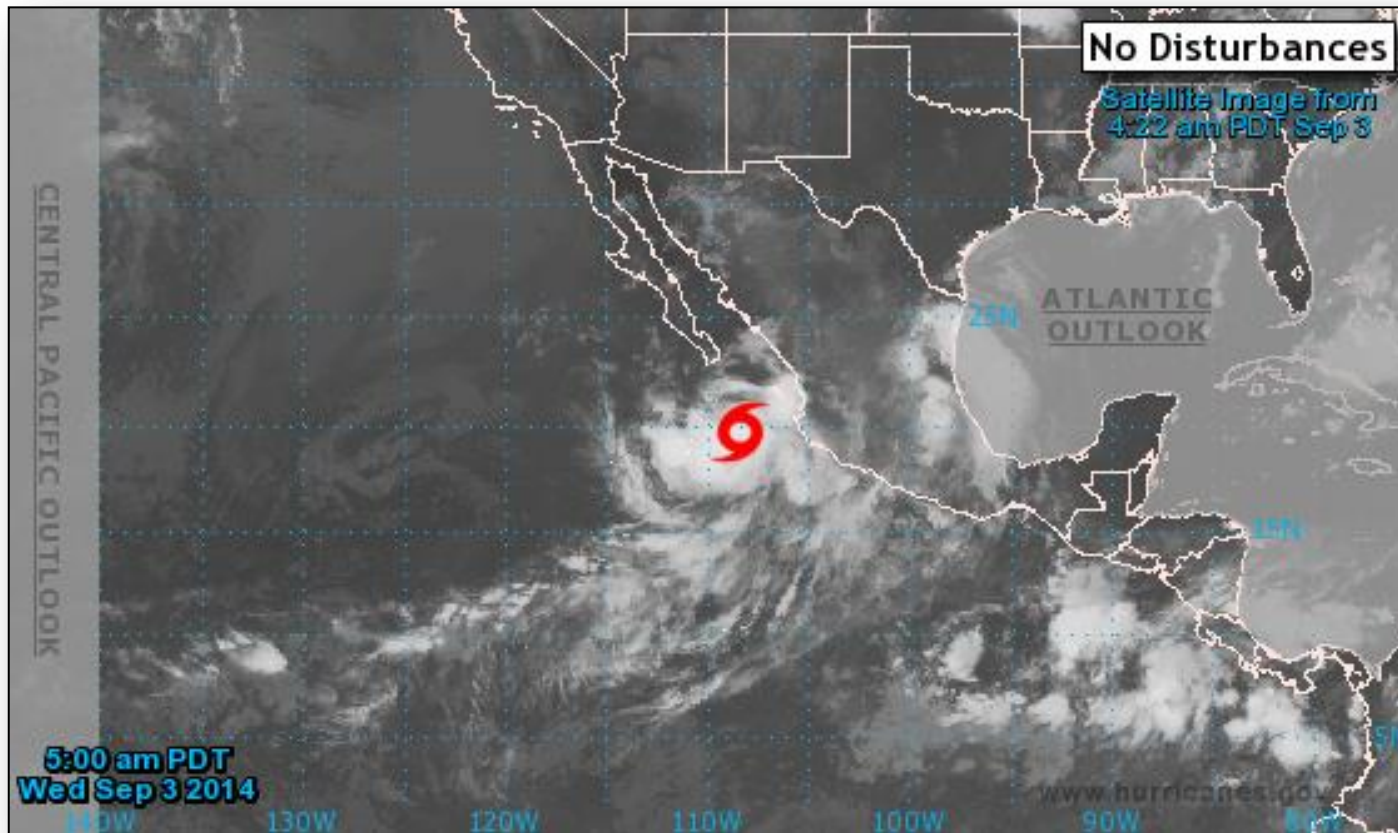
- Inland 65 miles WSW of Tampico, Mexico
- Moving west at 8 mph
- This general motion will continue for the next day or so
- Maximum sustained winds 35 mph
- The center of Dolly will move farther inland over eastern Mexico today
- Continued weakening will occur; expected to dissipate later today
- Expected rainfall amounts of 5 – 10 inches with isolated amounts of 15 inches possible in portions of Mexico
- The Government of Mexico has discontinued the tropical storm warning for the Gulf Coast of Mexico



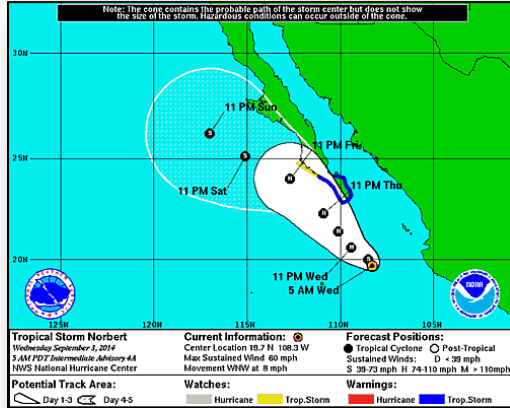
2-Day Tropical Outlook – Eastern Pacific



FEMA

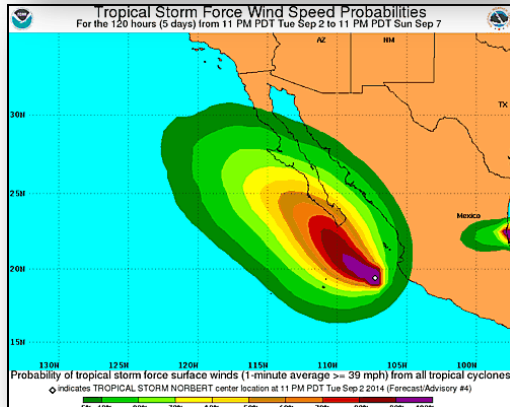


Tropical Storm Norbert – Eastern Pacific

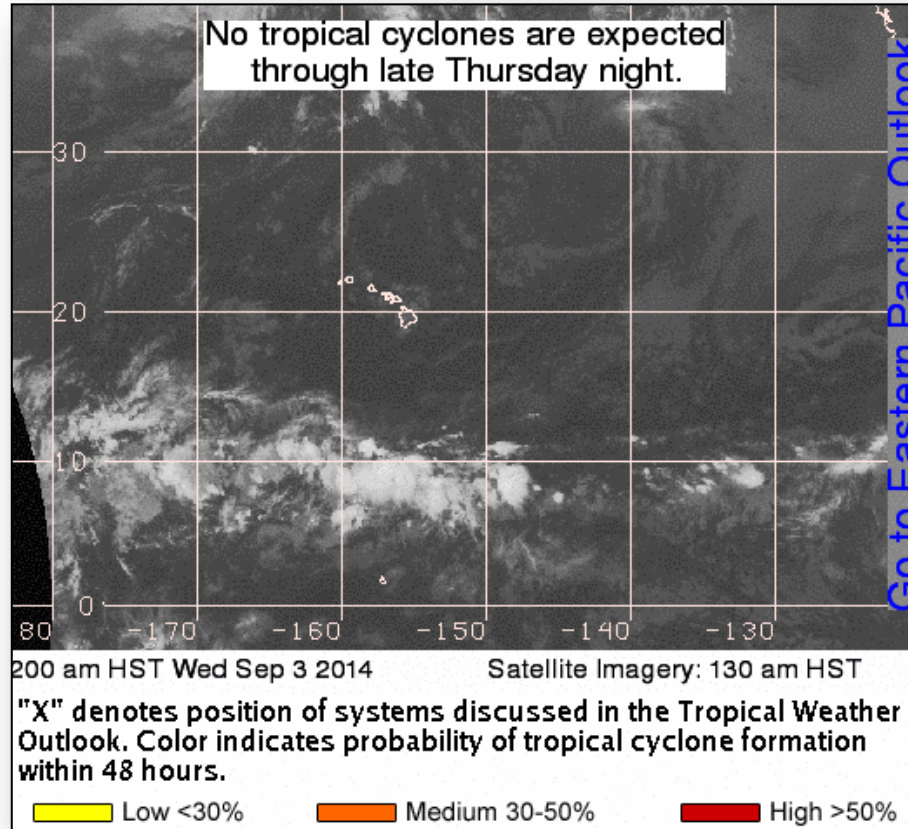


Tropical Storm Norbert (as of 8:00 a.m. EDT)

- Located 245 miles SSE of the southern tip of Baja California Mexico
- Moving WNW at 8 mph
- This general motion should continue today with a turn toward the NW expected on Thursday
- Maximum sustained winds 60 mph
- Strengthening is forecast to next 48 hours; expected to reach hurricane strength by Thursday
- Tropical storm-force winds extend out 60 miles
- Expected to move away from the southwestern coast of Mexico today
- Tropical Storm Warning in effect for La Paz to Santa Fe Mexico
- No watches or warnings in effect for the U.S.



2-Day Tropical Outlook – Central Pacific



Wildfire Summary



Fire Name (County)	FMAG #	Acres Burned	% Contained <small>Est. Containment date</small>	Evacuations (Residents)	Structures Threatened	Structures Destroyed	Fatalities / Injuries
California (1)							
Happy Camp Complex (Siskiyou County)	Not requested	66,335 (+2,153)	15%	Mandatory	743 (695 homes)	0	0 / 8

Disaster Requests & Declarations



Declaration Requests in Process		Requests APPROVED (since last report)	Requests DENIED (since last report)
2	Date Requested	0	0
WI – DR (Appeal) Extreme Cold and Deep Frost	August 27, 2014		
GU – DR Typhoon Halong	August 30, 2014		

Major Disaster Declaration Request – Guam



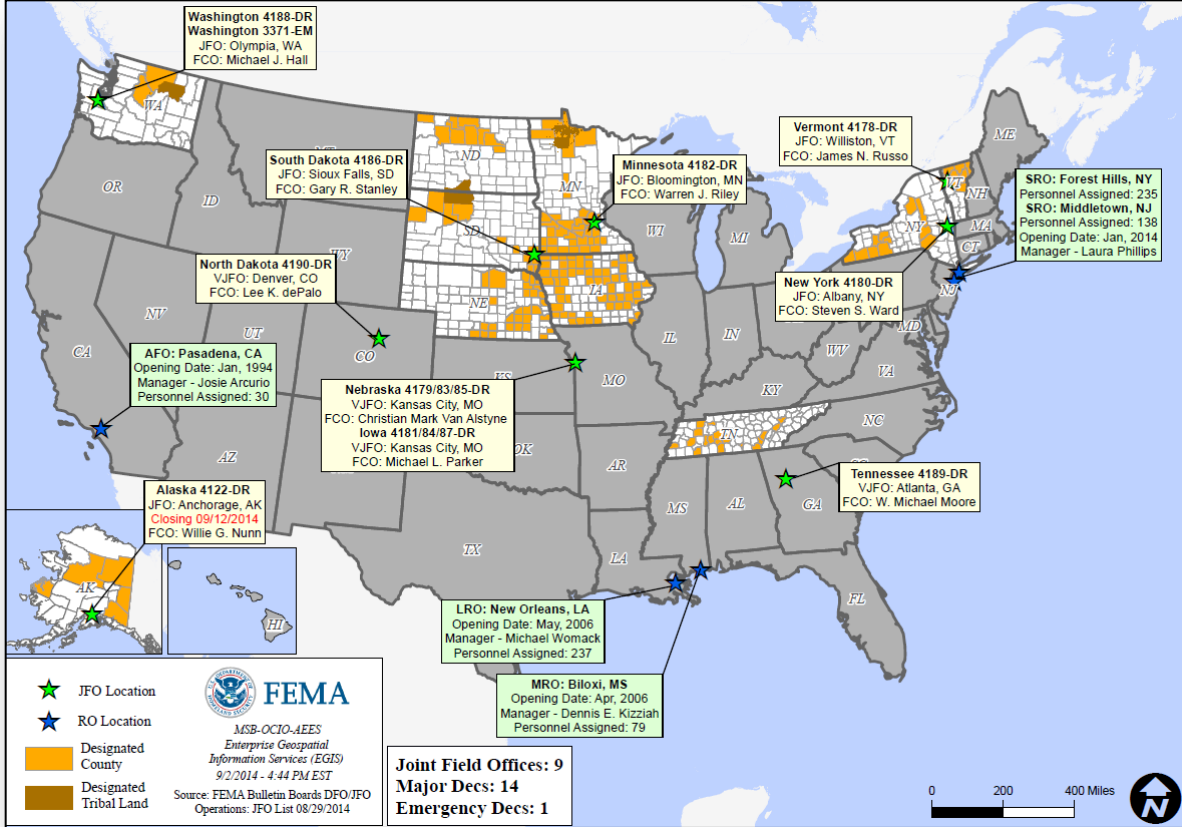
August 30, 2014

- Governor requests a Major Disaster Declaration for the Territory of Guam
- As a result of damages caused by Typhoon Halong during the period of July 28 to July 31, 2014
- Requested:
 - Individual Assistance, Public Assistance, and Hazard for the Territory of Guam



 Requested Area

Open Field Offices as of September 3, 2014

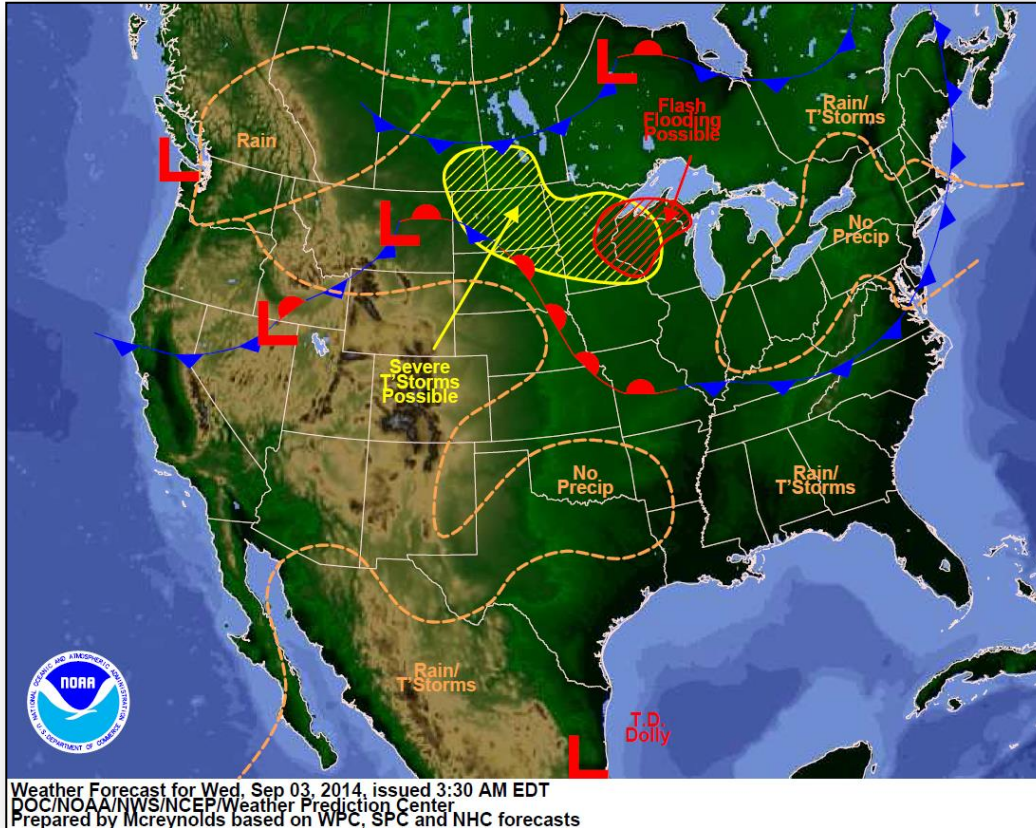


Joint Preliminary Damage Assessments

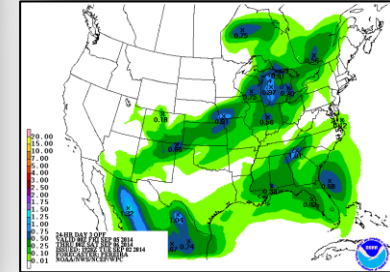
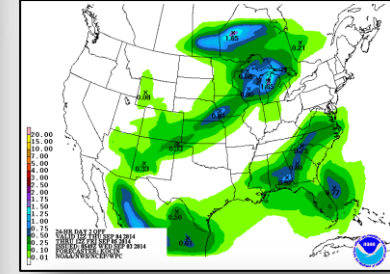
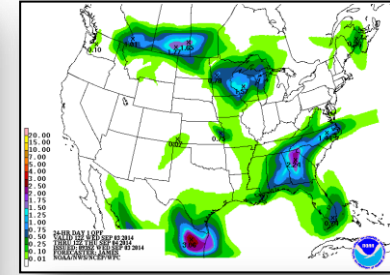
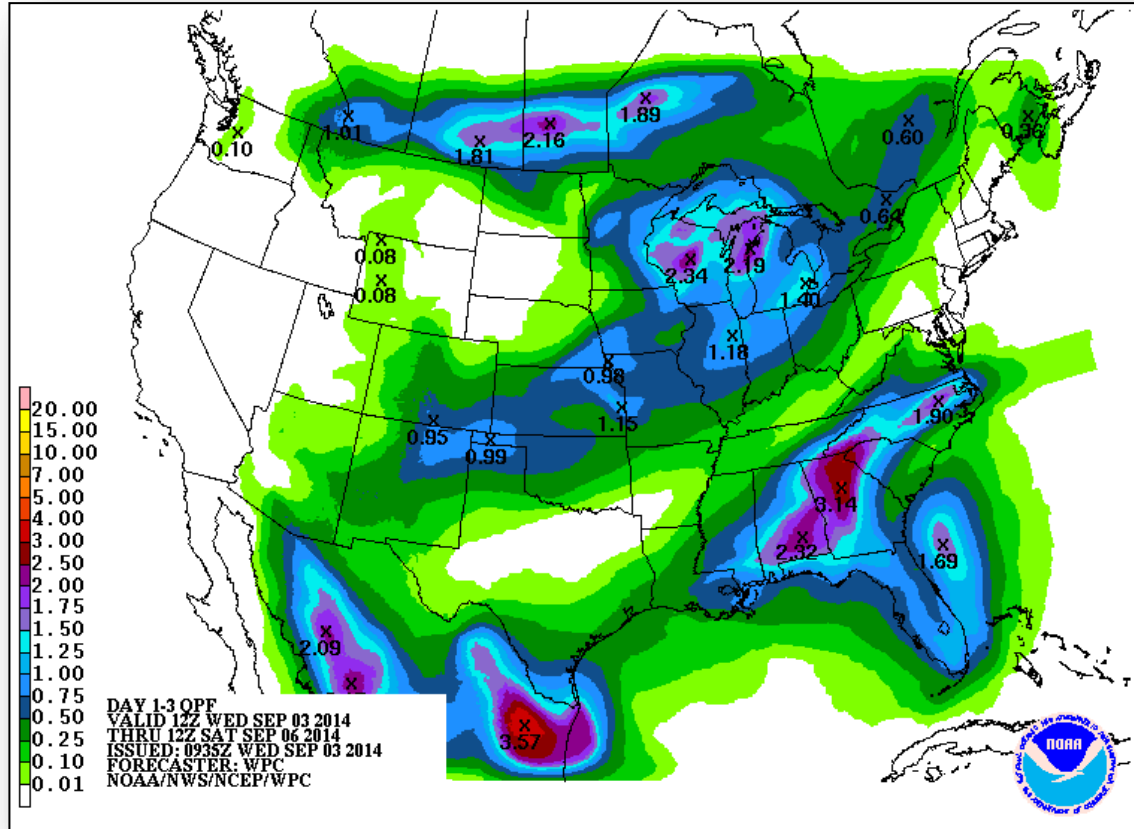


Region	State / Location	Event	I/PA	Number of Counties		Start – End
				Requested	Complete	
V	MI	Heavy Rainfall & Flooding August 11-12, 2014	IA	3	3	8/26 – 8/29
			PA	3	0	9/3 – TBD

National Weather Forecast



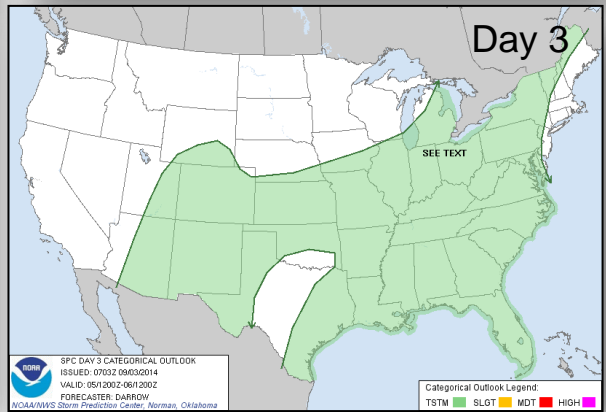
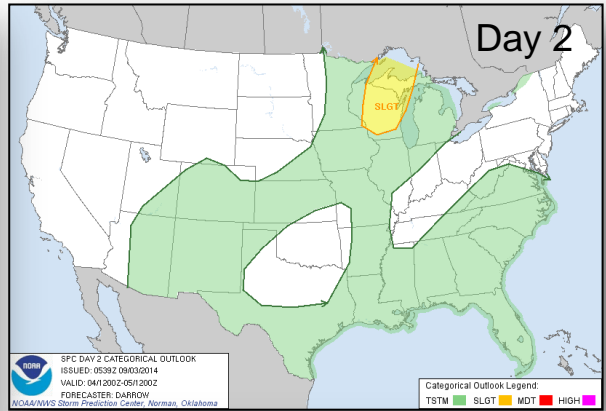
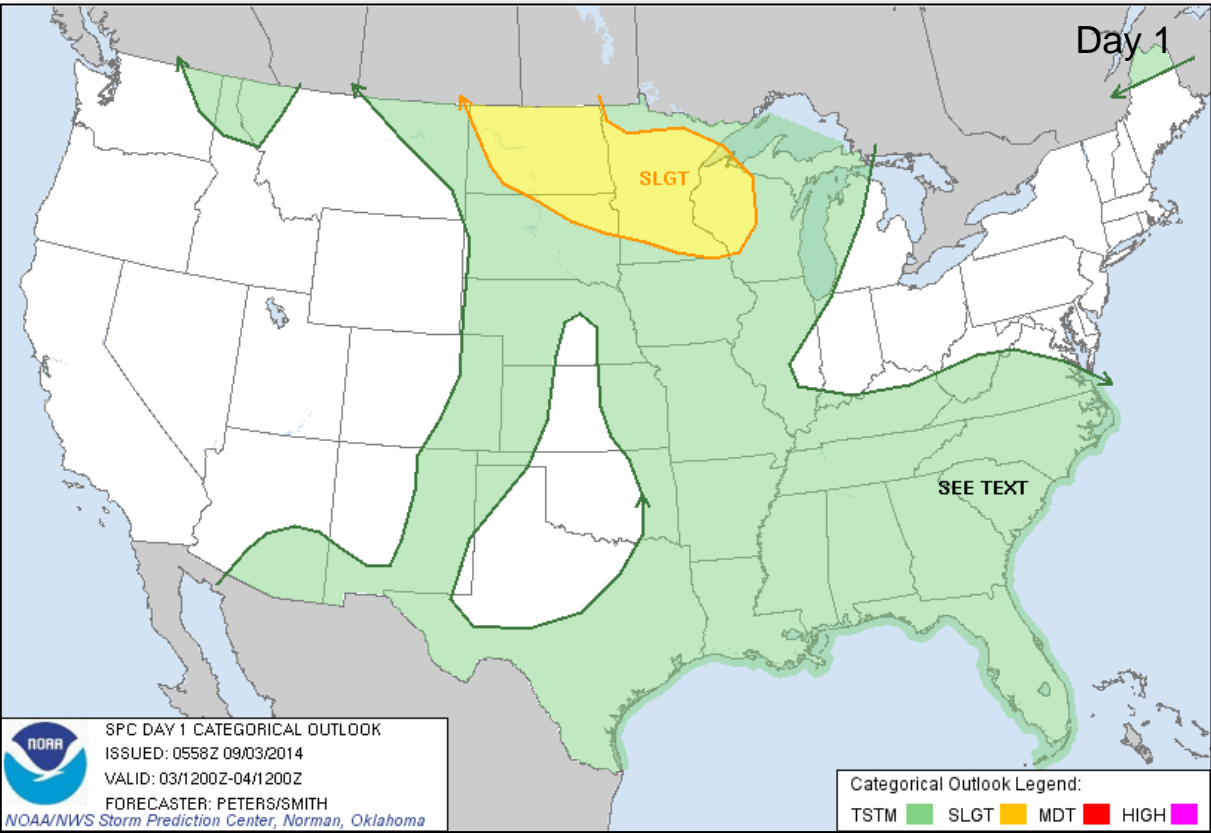
Precipitation Forecast – 3 Day



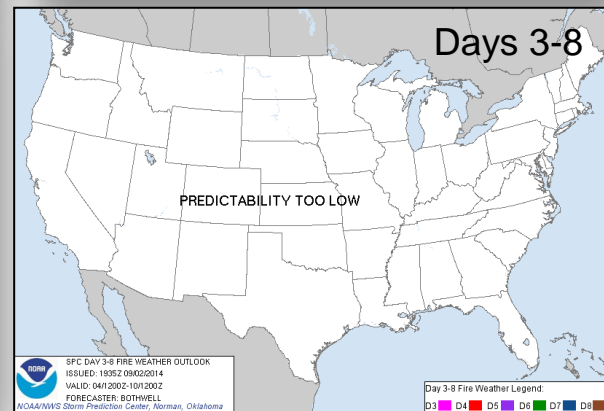
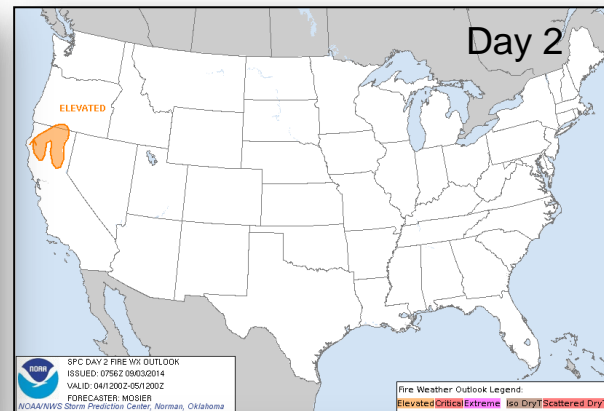
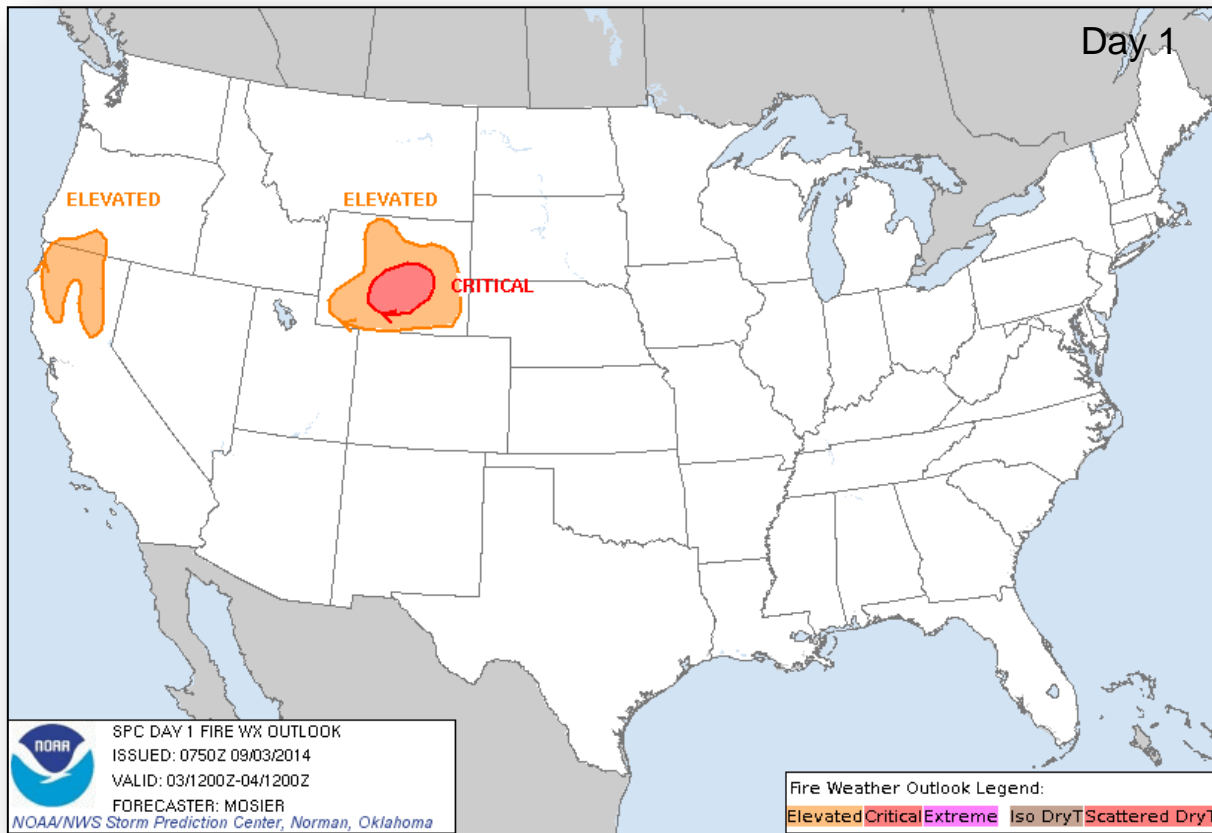
River Forecast



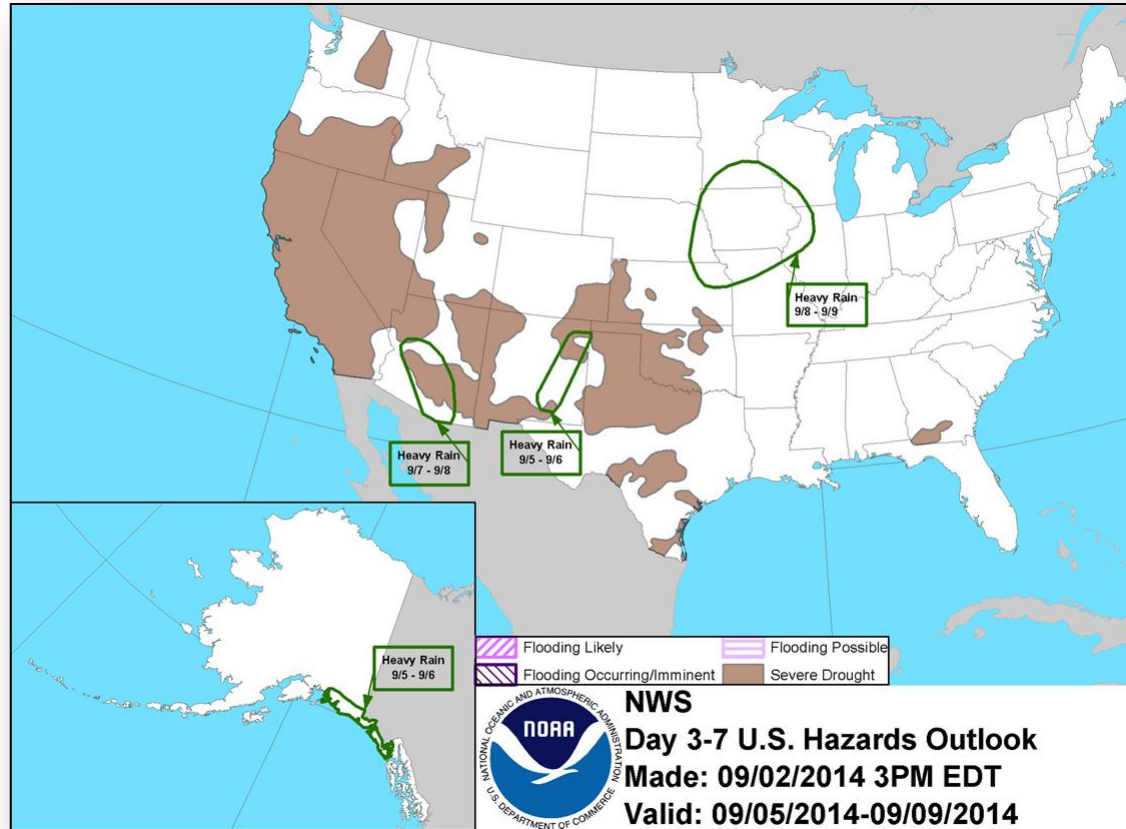
Convective Outlook, Days 1 – 3



Fire Weather Outlook, Days 1 – 8



Hazard Outlook: September 5 – 9



Space Weather Summary/Outlook

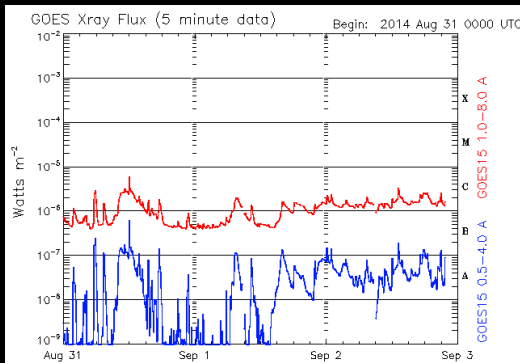
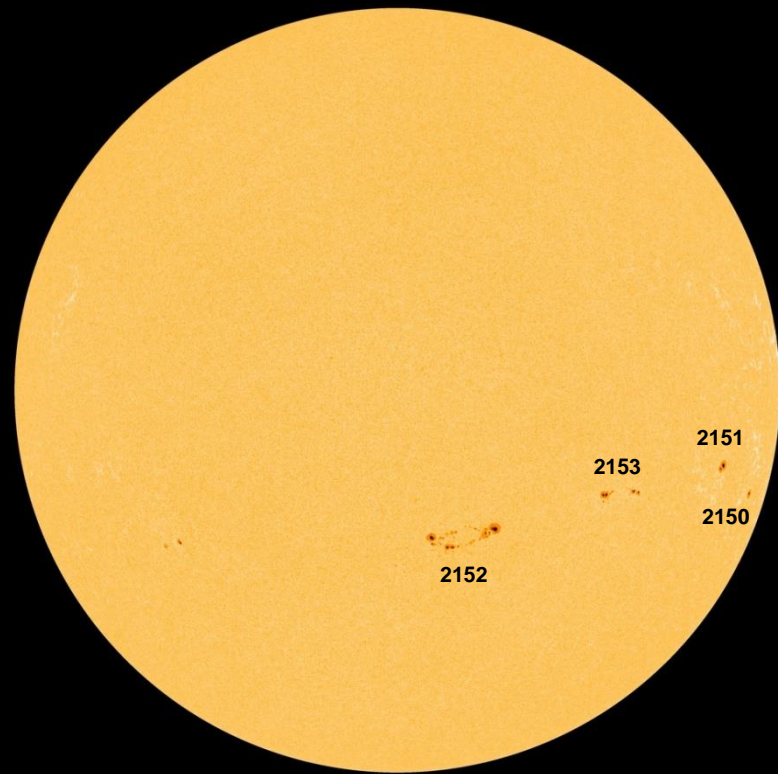


FEMA

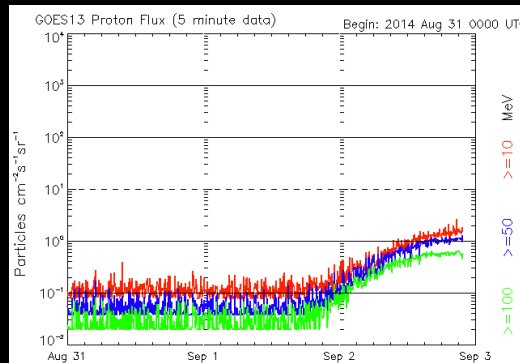
Space Weather Summary September 3rd, 2014	Past 48 Hours	Current
Solar Flare Radio Blackouts (R Scale)	None	None
Solar Radiation Storms (S Scale)	None	None
Geomagnetic Storms (G Scale)	None	None

Summary of Recent Activity/Outlook:

- Significant coronal mass ejection from old 2139 on Sept. 1st (next slide)
- Currently quiet across the R and G scales
- Some enhancement on S scale (below event threshold)
- Some heightened situational awareness warranted with return of old 2139



Updated 2014 Sep 2 21:55:12 UTC NOAA/SWPC Boulder, CO USA



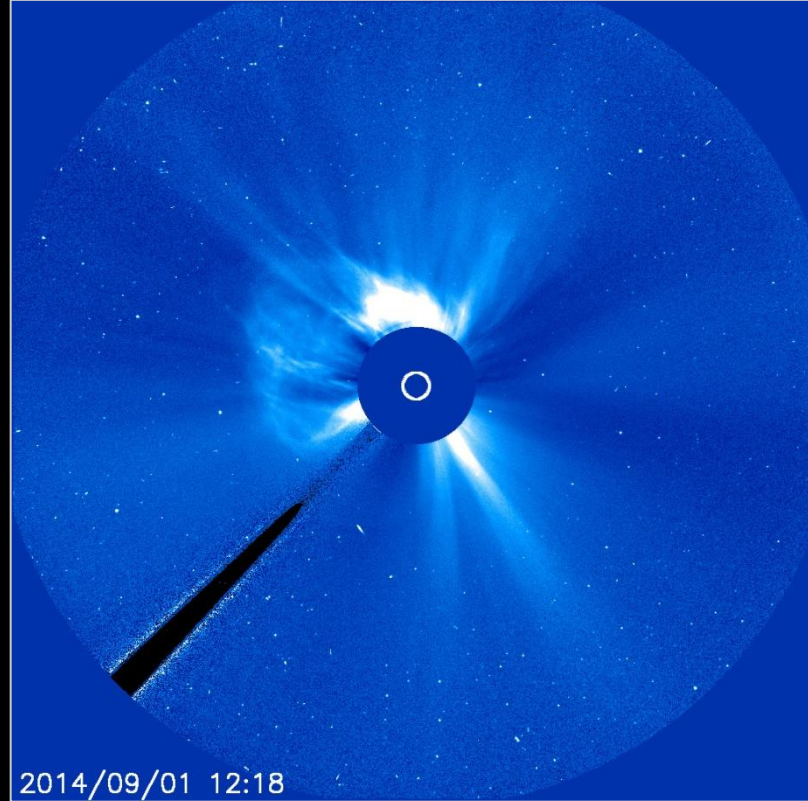
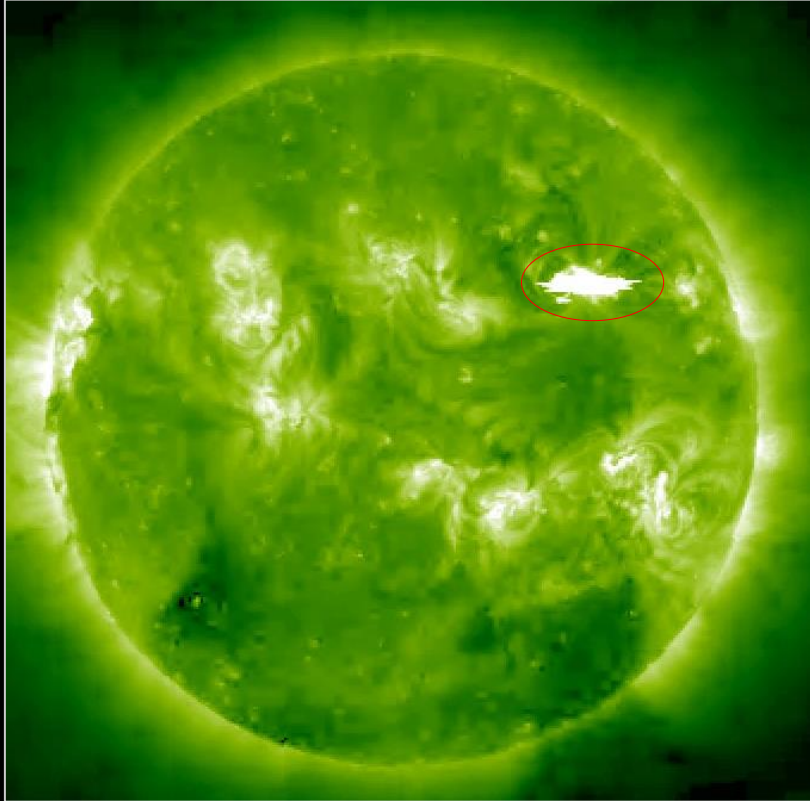
Updated 2014 Sep 2 21:56:02 UTC NOAA/SWPC Boulder, CO USA

Bob Rutledge
SWPC
Sept. 3rd, 2014

Sept. 1st Coronal Mass Eruption



FEMA



2014/09/01 12:18

Bob Rutledge
SWPC
Sept. 3rd, 2014

FEMA Readiness – Deployable Teams/Assets



Deployable Teams/Assets									
Resource	Status	Total	Available		Partially Available	Not Available	Detailed Deployed Activated	Comments	Rating Criterion
FCO	Green	39	18	47%	0	1	20		OFDC Readiness: FCO Green Yellow Red Type 1 3+ 2 1 Type 2 4+ 3 2 Type 3 4 3 2 FDRC 3 2 1
FDRC	Green	10	5	50%	0	0	5		
US&R	Green	28	26	93%	1	1	0	<ul style="list-style-type: none"> NM-TF1 (Red for personnel shortages) CA-TF1 (Yellow for logistics & management) 	<ul style="list-style-type: none"> Green = Available/FMC Yellow = Available/PMC Red = Out-of-Service Blue = Assigned/Deployed
National IMAT	Yellow	3	2	67%	0	0	1	National IMAT West to CA	<ul style="list-style-type: none"> Green: 3 avail Yellow: 1-2 avail Red: 0 avail (<i>Individual N-IMAT red if 50% of Section Chiefs and/or Team Leader is unavailable for deployment.</i>)
Regional IMAT	Yellow	13	5	38%	3	4	1	<u>Partially Mission Capable (PMC):</u> <ul style="list-style-type: none"> Region II, III, VI <ul style="list-style-type: none"> <u>Not Mission Capable (NMC):</u> Region V, VII, IX (Team 1), VI (Team 2) <u>Deployed</u> <ul style="list-style-type: none"> Region X to WA 	<ul style="list-style-type: none"> Green: 7 or more avail Yellow: 4 - 6 teams available Red: > 8 teams deployed/unavailable <p><i>R-IMAT also red if TL Ops/Log Chief is unavailable and has no qualified replacement.</i></p>
MCOV	Green	60	53	88%	0	7	0		<ul style="list-style-type: none"> Green = 80 – 100% avail Yellow = 60 – 79% avail Red = 59% or below avail Readiness remains 95%

FEMA Readiness – National/Regional Teams



National/Regional Teams									
Resource	Status	Total	Available		Partially Available	Not Available	Deployed/ Activated	Comments	Rating Criterion
NWC		5	5	100%	0	0	24/7		<ul style="list-style-type: none"> • Green = FMC • Yellow = PMC • Red = NMC
NRCC		2	344	89%	0	44	Not Activated		
HLT		1	N/A	N/A	0	1	Activated		
DEST							Not Activated		
RRCCs		10	10	100%	0	0	None		
RWCs/MOCs		10	10	100%	0	0	24/7		



FEMA

FEMA's mission is to support our citizens and first responders to ensure that as a nation we work together to build, sustain, and improve our capability to prepare for, protect against, respond to, recover from, and mitigate all hazards.