

The Disaster Center is dedicated to the idea that disaster mitigation is cost effective and individuals pursuing their own interest are the greatest potential force for disaster reduction.

Please consider making a small donation to the Disaster Center



When disaster mitigation is cost effective, we are on the road to bringing disasters to an end.



FEMA

Daily Operations Briefing

Thursday, September 3, 2015

8:30 a.m. EDT

Significant Activity: Sep 2-3



Significant Events: None

Tropical Activity:

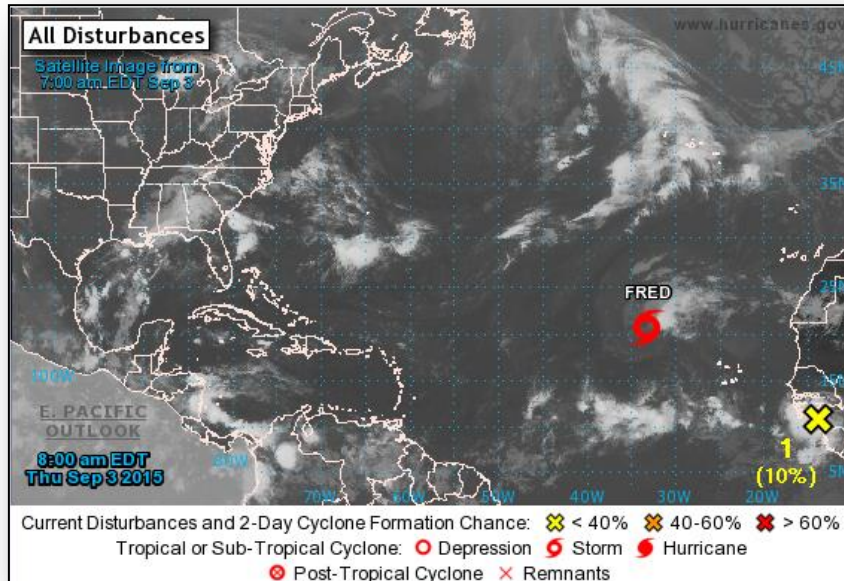
- Atlantic: Tropical Storm Fred; Disturbance 1
- Eastern Pacific: Tropical Storm Kevin; Disturbance 1
- Central Pacific: Hurricane Ignacio; Hurricane Jimena
- Western Pacific: No significant activity affecting U.S. territories

Significant Weather:

- Rain and thunderstorms – Pacific Northwest to Northern Plains, Southwest to Northern Plains, Great Lakes and Southeast to eastern seaboard
- Red Flag Warnings – NV
- Critical/Elevated Fire Weather area – NV, ID, UT & WY
- Space weather: Past 24 hours – none; next 24 hours – none

Declaration Activity: None

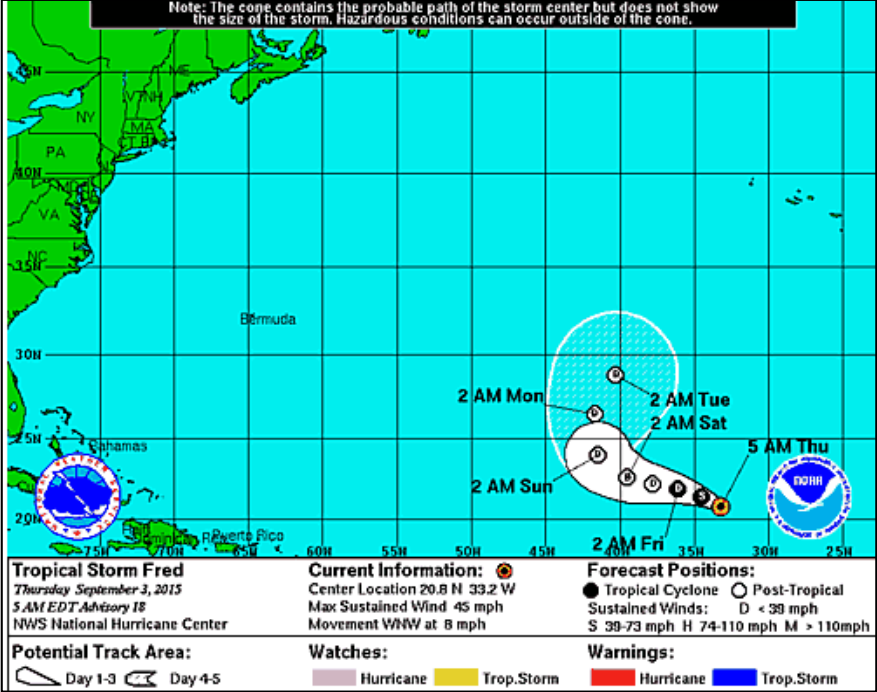
2-Day Tropical Outlook – Atlantic



Disturbance 1: (As of 5:00 a.m. EDT)

- Well organized tropical wave moving off the coast of Africa later today
- Moving W at 15-20 mph
- Several hundred miles SE of the Cape Verde Islands
- Appears conducive for gradual development
- Formation chance through 48 hours: Low (10%)
- Formation chance through 5 days: Low (40%)

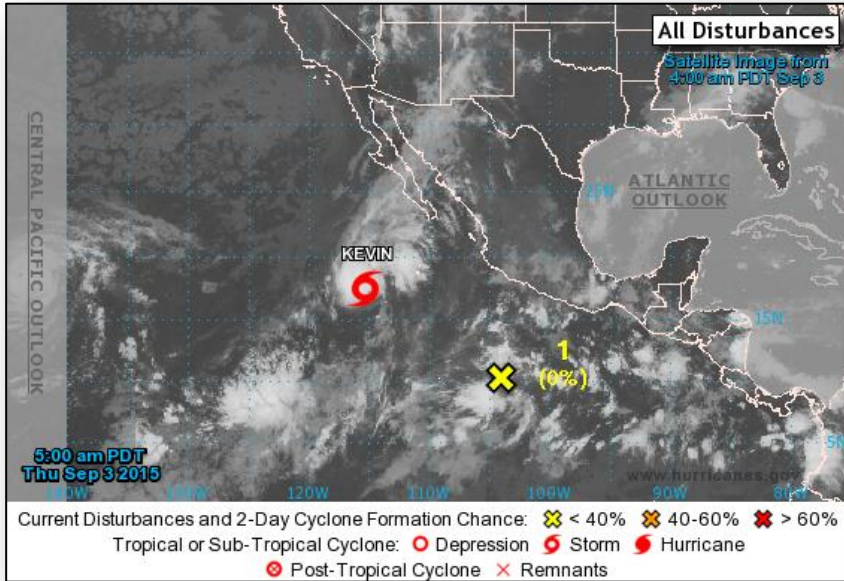
Atlantic – Tropical Storm Fred



Advisory #18: (As of 5:00 a.m. EDT)

- Located 690 miles WNW of the Cape Verde Islands
- Moving WNW at 8 mph; motion expected to continue with over next couple days
- Maximum sustained winds at 45 mph
- Fluctuations in strength possible today
- Expected to weaken to a tropical depression by Friday morning and a post tropical low Friday night
- Tropical storm-force winds extend outwards up to 70 miles

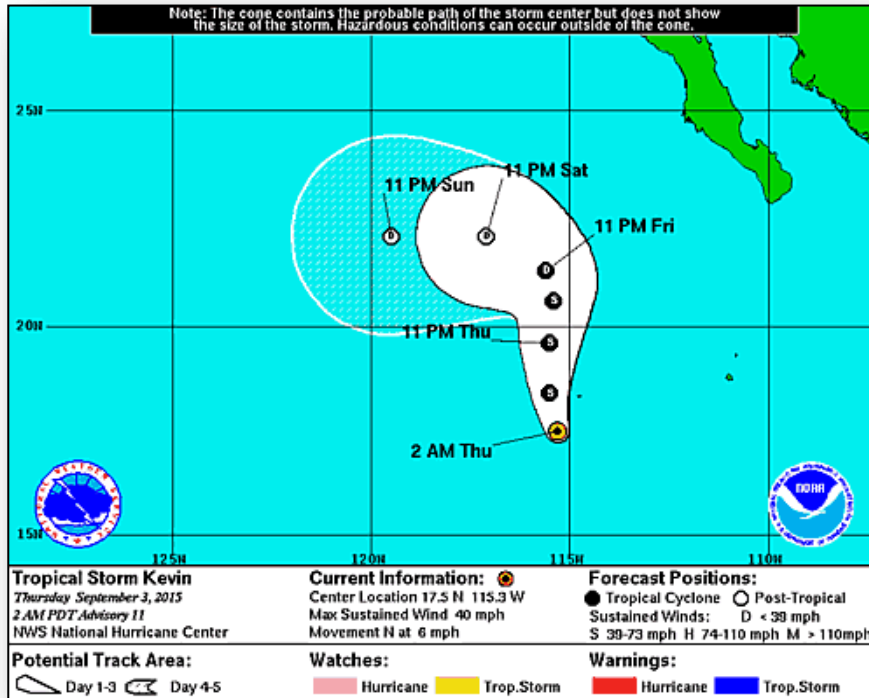
2 – Day Tropical Outlook – Eastern Pacific



Disturbance 1: (As of 5:00 a.m. EDT)

- Disorganized cloudiness/showers several hundred miles S of Manzanillo Mexico
- Moving WNW at 5-10 mph
- Some development possible early next week
- Formation chance through 48 hours: Low (near 0%)
- Formation chance through 5 days: Medium (20%)

Eastern Pacific – Tropical Storm Kevin



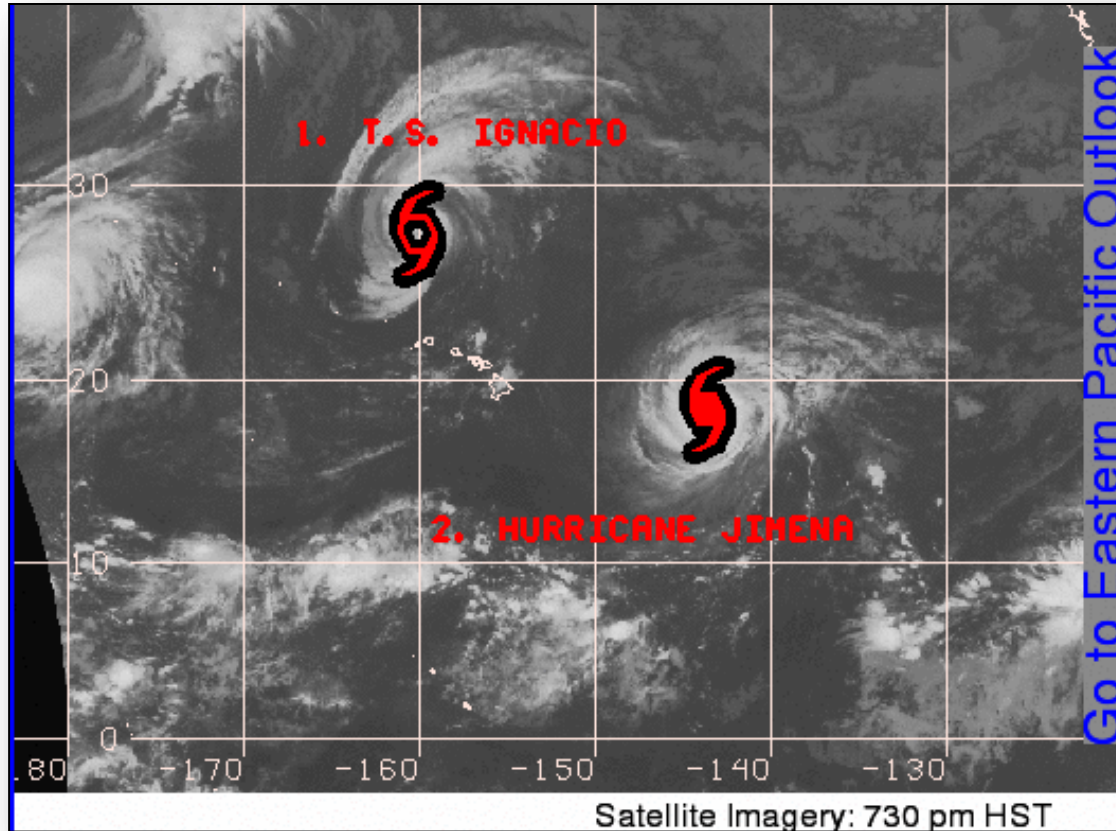
Advisory #11: (as of 5:00 a.m. EDT)

- Located 510 miles SW of the southern tip of Baja California
- Moving N at 6 mph; motion expected to continue through tonight
- Turn towards NNW forecast for Friday
- Maximum sustained winds 40 mph; little change in strength forecast; expected to remain a tropical storm through Friday
- Tropical storm force winds extend 70 miles

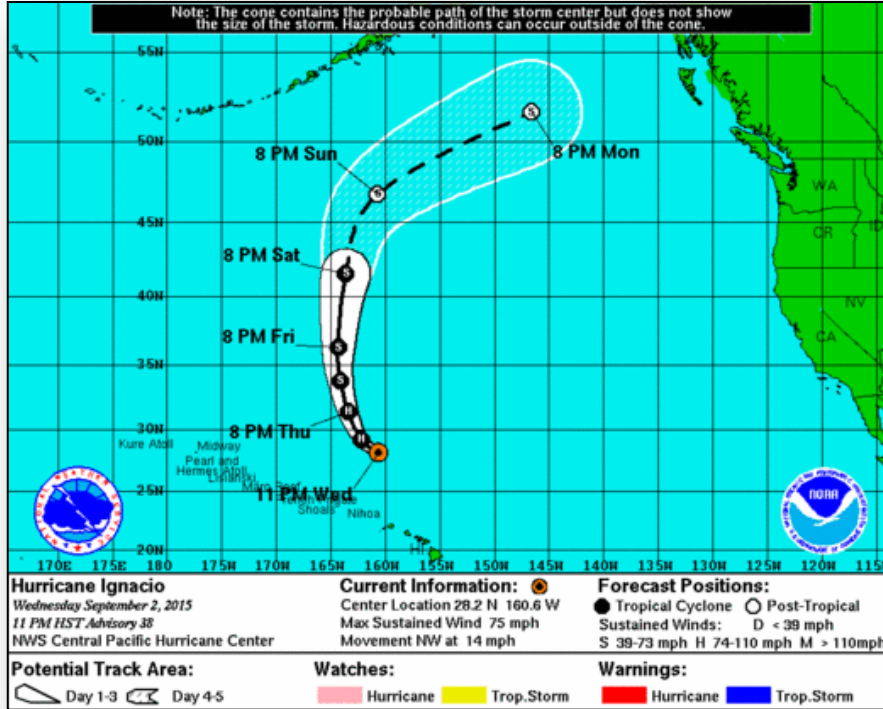
2-Day Tropical Outlook – Central Pacific



FEMA



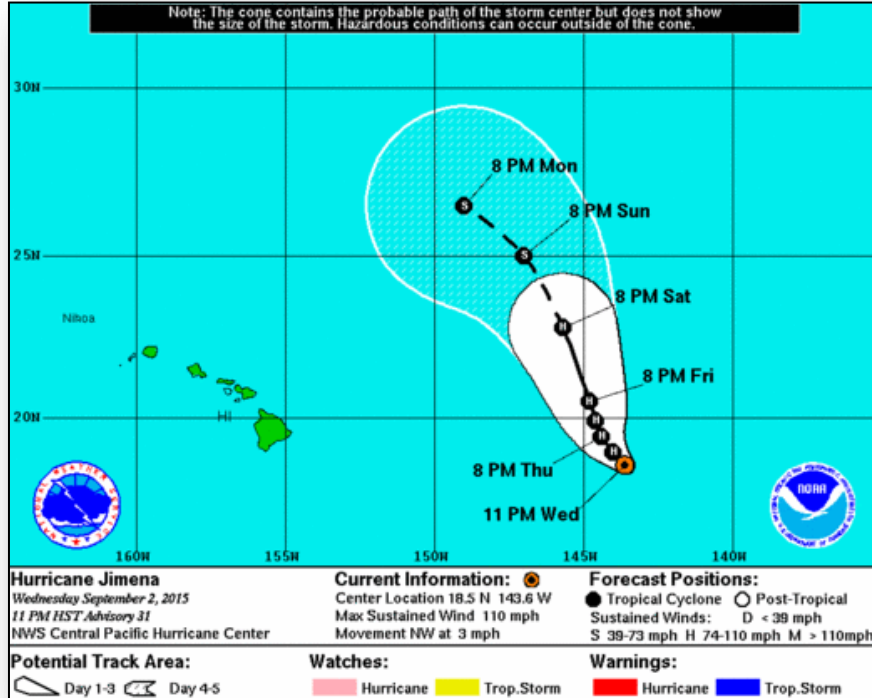
Central Pacific – Hurricane Ignacio



Advisory #38: (as of 5:00 a.m. EDT)

- 505 miles NNW of Honolulu, HI
- Moving NW at 14 mph
- Motion expected to continue today then N on Friday
- Maximum sustained winds are 75 mph; little change in strength today; gradual weakening Friday
- Hurricane force winds extend 25 miles; tropical storm force winds extend 240 miles

Central Pacific – Hurricane Jimena



Advisory #31: (as of 5:00 a.m. EDT)

- Located 755 miles E of Hilo, HI
- Moving NW at 3 mph; motion expected through Friday night
- Maximum sustained winds are 110 mph; expected to gradually weaken through Friday night
- Hurricane force winds extend outward up to 60 miles; tropical storm force winds extend 185

Wildfire Summary



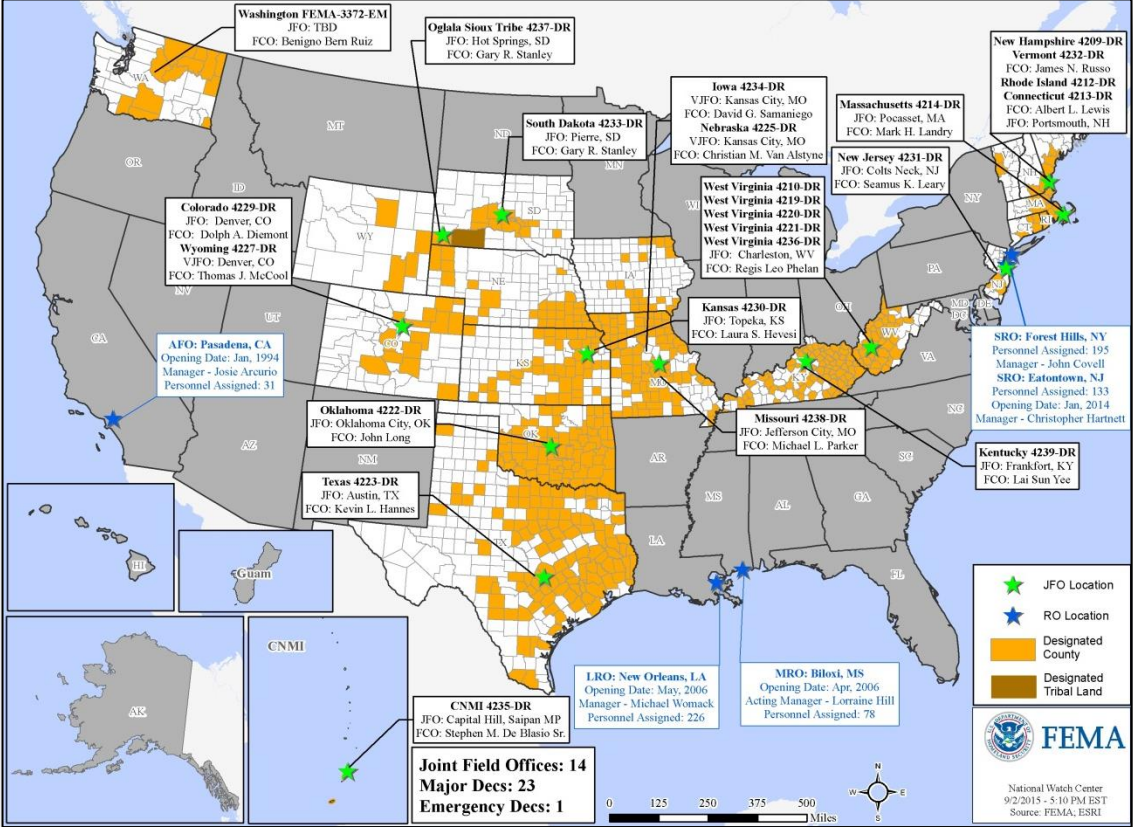
Fire Name (County)	FMAG #	Acres burned	% Contained	Evacuations (Residents)	Structures Threatened	Structures Damaged/ Destroyed	Fatalities/ Injuries
Washington (3)							
Kettle Complex (Ferry County)	FEMA-5101-FM-WA <i>Approved Aug 14</i> FEMA-5108-FM-WA <i>Approved Aug 21</i>	76,216	17% (+3)	Mandatory/ Voluntary 334	4,569 (2,894 homes)	0/2 (1 home)	0/3
North Star & Tunk Block Fires (Okanogan County)	No FMAG Requested	367,265 (+494)	25 - 45% (+5)	Mandatory/ Voluntary 3,180 (+2,479)	7,225 (6,000 homes)	0/0	0/0
Okanogan Complex (Okanogan County)	FEMA-5104-FM-WA <i>Approved Aug 14</i> FEMA-5106-FM-WA <i>Approved Aug 19</i>	148,251 (+272)	50% (+5)	Mandatory/ Voluntary 184	0	0/318 (123 homes)	3/6
Oregon (1)							
Grizzly Bear Complex (Wallowa County)	FEMA-5107-FM-OR <i>Approved Aug 21</i>	74,634 (+163)	27% (+7)	Mandatory Evacuations Lifted	75 (45 homes)	0/33 (5 homes)	0/6
Idaho (1)							
TePee Springs Fire (Idaho County)	FEMA-5110-FM-ID <i>Approved Aug 29</i>	91,102 (+1,679)	25% (-5)	Mandatory/ Voluntary (Unknown)	1,400 (+400) (700 homes)	0/28 (5 homes)	0/2 (+1)

Disaster Requests & Declarations



Declaration Requests in Process		Requests APPROVED (since last report)	Requests DENIED (since last report)
2	Date Requested	0	0
FL – DR Severe Storms and Flooding	August 25, 2015		
IN – DR Severe Storms, Tornadoes, Straight-line Winds, and Flooding	August 31, 2015		

Open Field Offices as of Sep 3

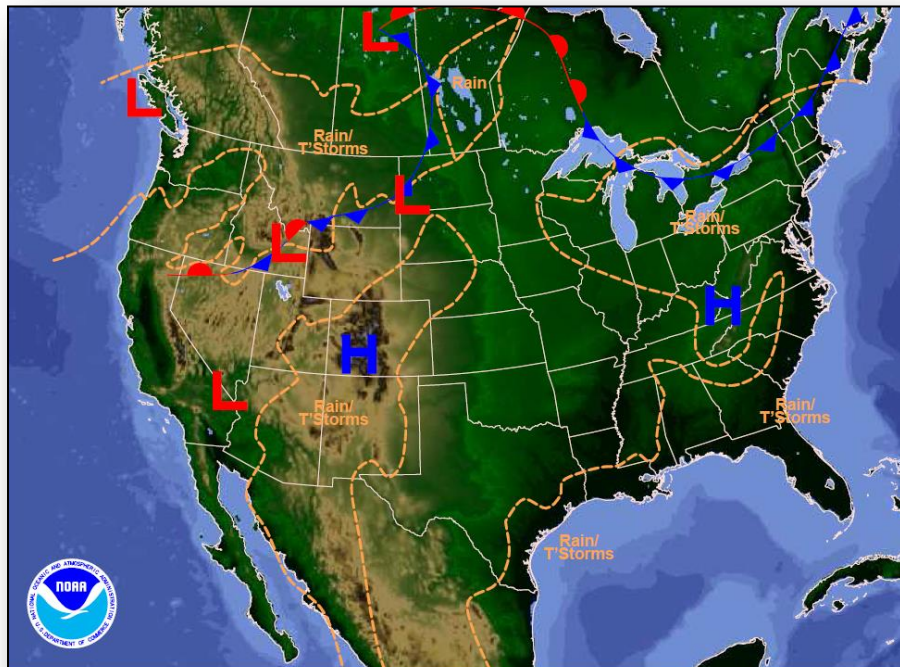


Joint Preliminary Damage Assessments



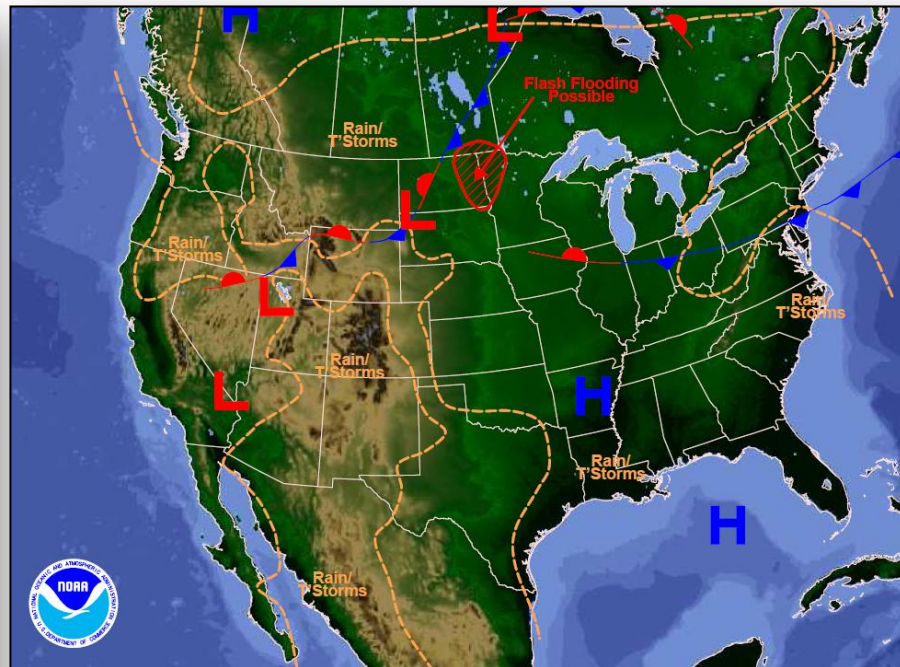
Region	State / Location	Event	I/PA	Number of Counties		Start – End
				Requested	Complete	
III	WV	Severe Storms, Straight-line Winds, Flooding, Landslides, & Mudslides (add-on for FEMA-4236-DR-WV) July 10 - 14, 2015	IA	2	1	9/2 - TBD
			PA	2	2	8/28 – 8/31
IV	FL	Heavy Rain & Flooding July 26, 2015 & continuing	IA	5	5	8/12 - 8/19
			PA	5	0	TBD
VIII	CO	Severe Storms & Flooding April – June, 2015	IA	1	0	9/3-TBD

National Weather Forecast



Weather Forecast for Thu, Sep 03, 2015, issued 4:27 AM EDT
DOC/NOAA/NWS/NCEP/Weather Prediction Center
Prepared by Campbell based on WPC, SFC and NHC forecasts

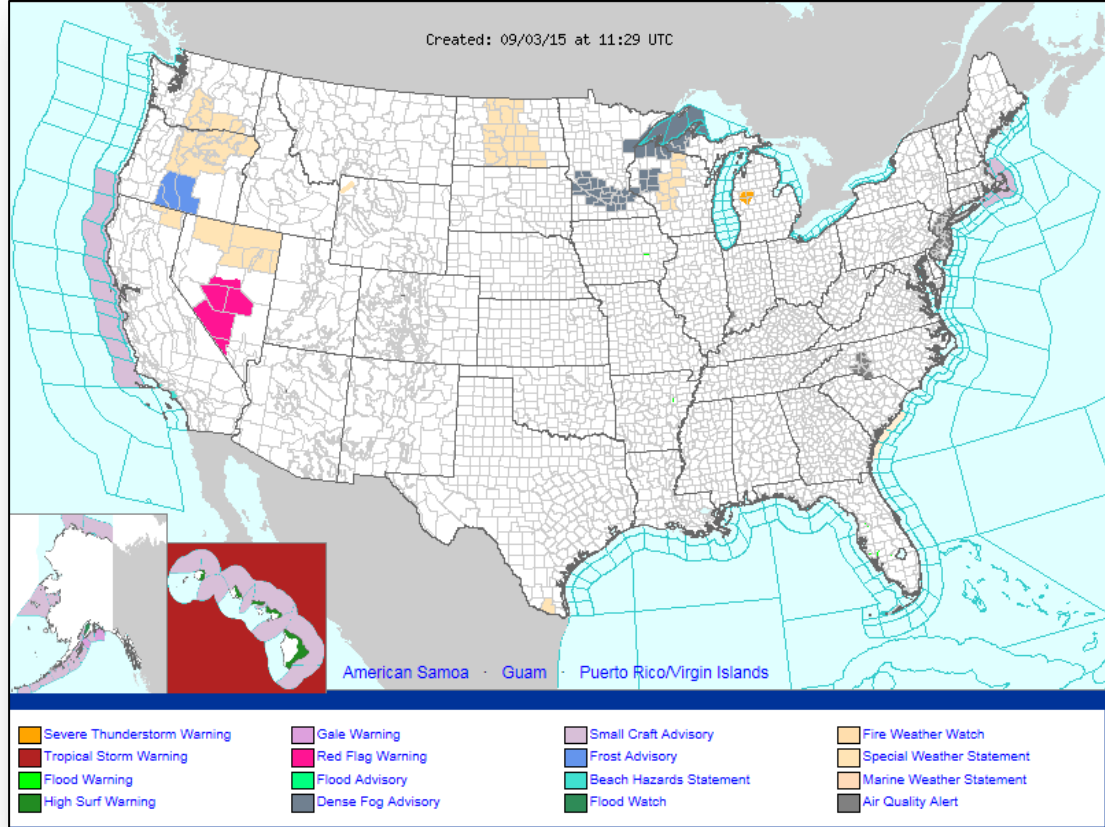
Today



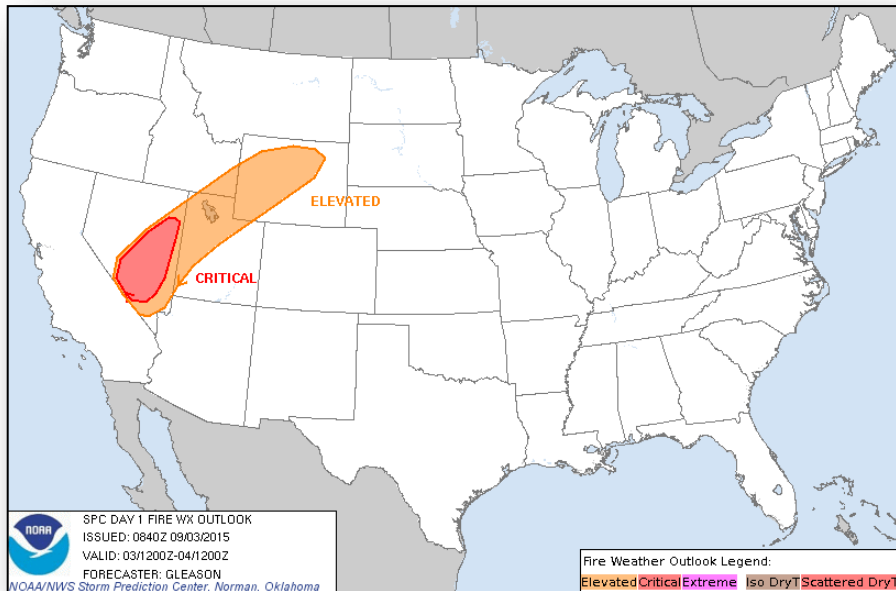
Weather Forecast for Fri, Sep 04, 2015, issued 4:42 AM EDT Thu, Sep 03, 2015
DOC/NOAA/NWS/NCEP/Weather Prediction Center
Prepared by Campbell based on WPC, SFC and NHC forecasts

Tomorrow

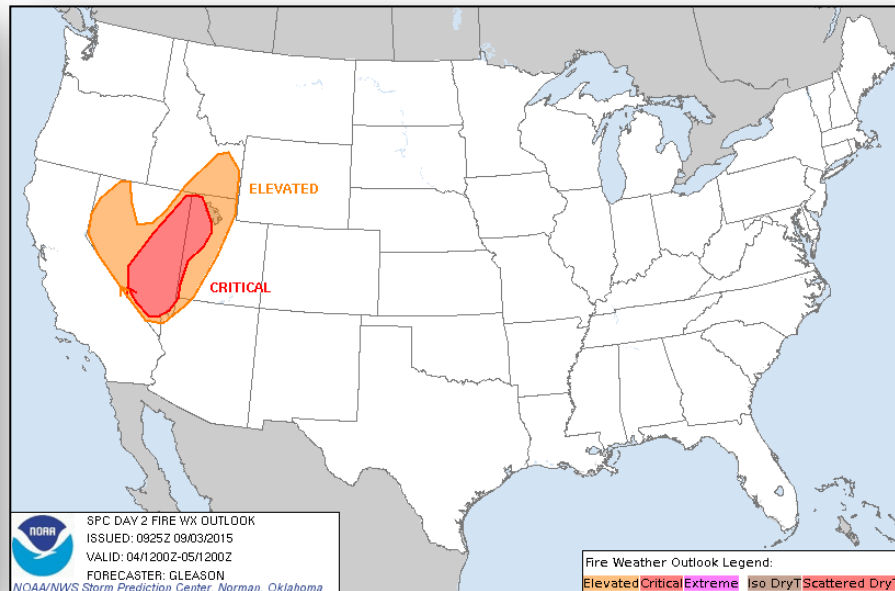
Active Watches/Warnings



Fire Weather Outlook, Days 1-2

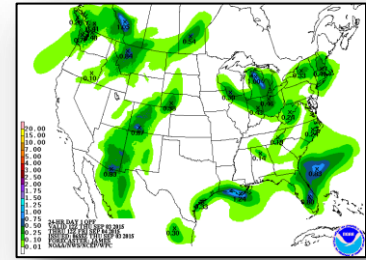
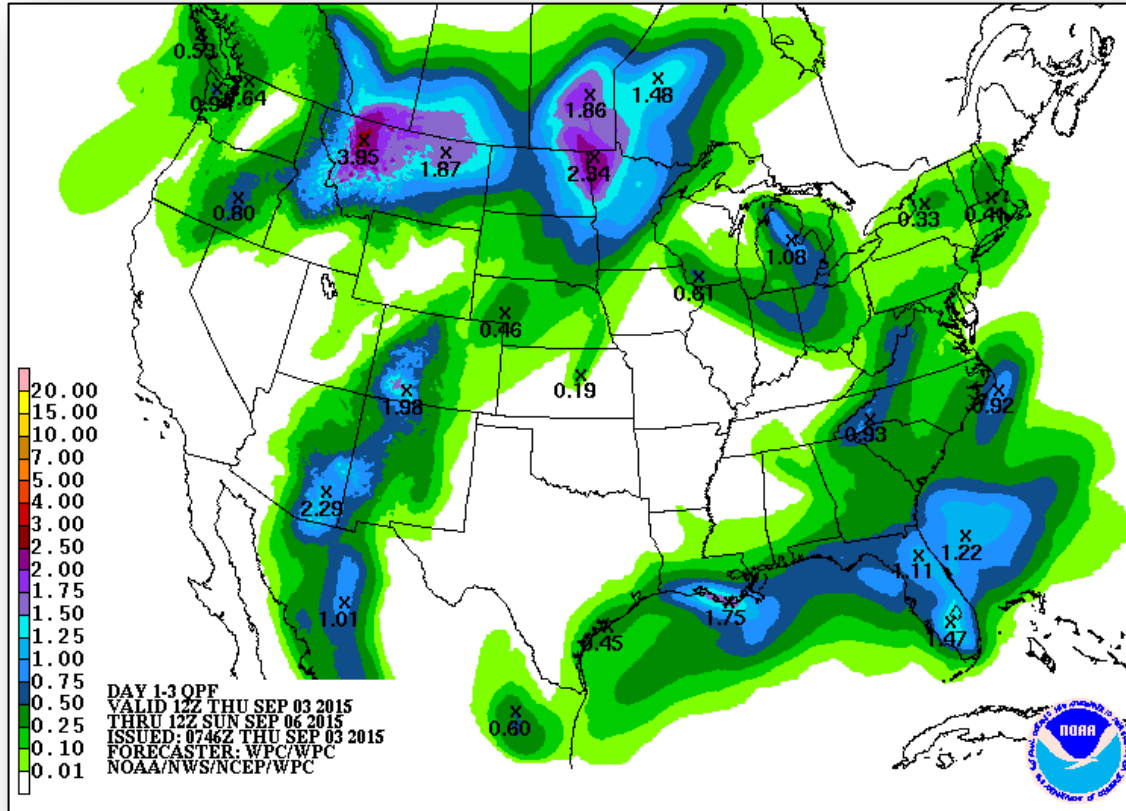


Today

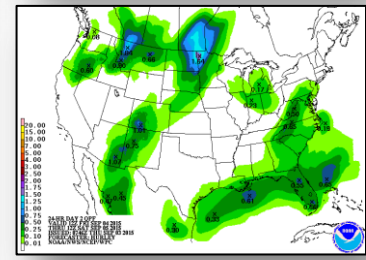


Tomorrow

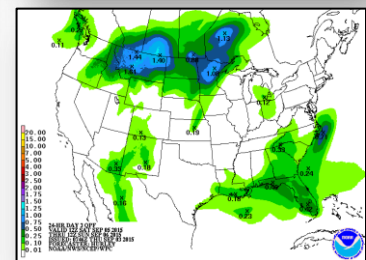
Precipitation Forecast, 1-3 Day



Day 1

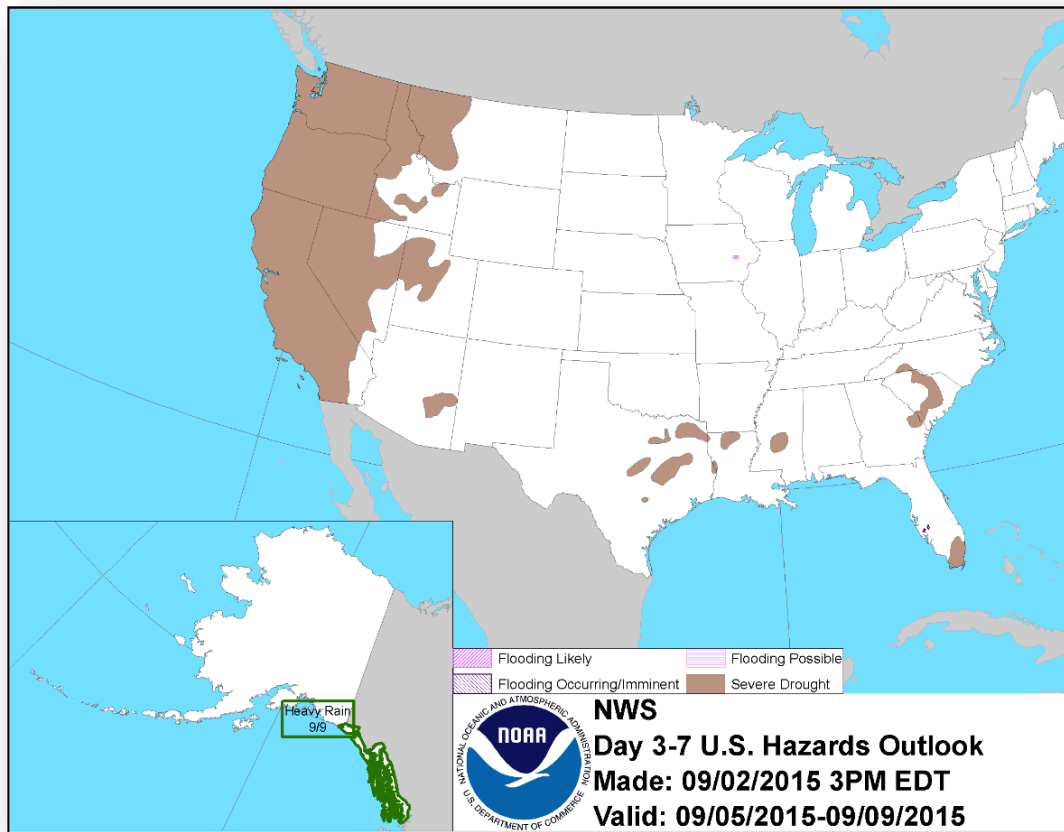


Day 2



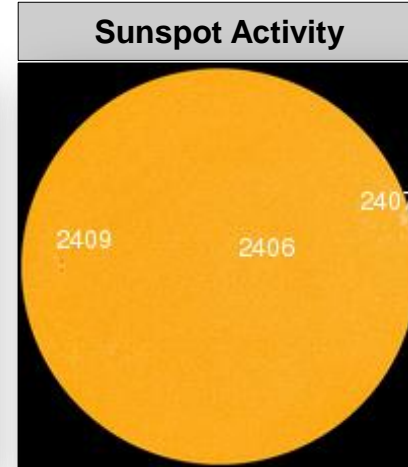
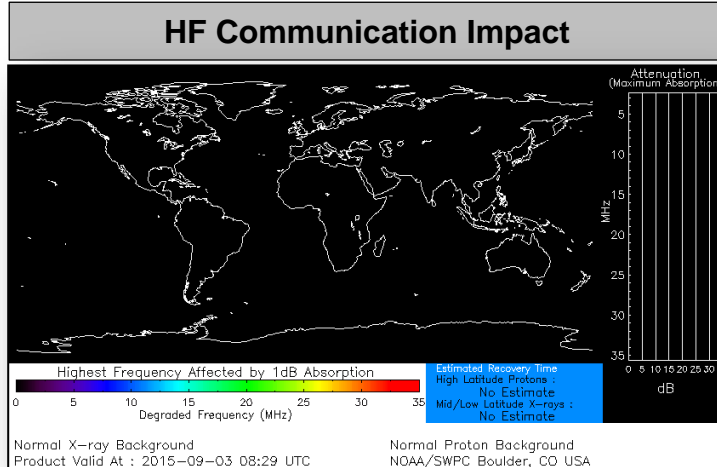
Day 3

Hazard Outlook, Sep 5 – Sep 9



Space Weather

	Past 24 Hours	Current	Next 24 Hours
Space Weather Activity:	None	None	None
• Geomagnetic Storms	None	None	None
• Solar Radiation Storms	None	None	None
• Radio Blackouts	None	None	None



FEMA Readiness – Deployable Teams /Assets



Deployable Teams/Assets									
Resource	Status	Total	FMC Available		Partially Available	Not Available	Detailed, Deployed, Activated	Comments	Rating Criterion
FCO	Yellow	35	9	26%	0	1	25		OFDC Readiness: FCO Green Yellow Red Type 1 3+ 2 1 Type 2 4+ 3 2 Type 3 4 3 2 FDRC 3 2 1
FDRC	Green	9	5	56%	0	0	4		
US&R	Green	28	27	96%	0	1	0	NM-TF1 (Red) – Personnel shortages	<ul style="list-style-type: none"> • Green = Available/FMC • Yellow = Available/PMC • Red = Out-of-Service • Blue = Assigned/Deployed
National IMAT	Green	3	3	100%	0	0	0		<ul style="list-style-type: none"> • Green: 3 avail • Yellow: 1-2 avail • Red: 0 avail (<i>Individual N-IMAT red if 50% of Section Chiefs and/or Team Leader is unavailable for deployment.</i>)
Regional IMAT	Yellow	13	5	38%	0	0	8	Deployed: RI to NH/MA Aug 6 - TBD (training ,but FMC) RII to NY for DCE Cert EX (but FMC) RIV (Team 1) deployed to KY RVI (Team 1 & 2) deployed to TX RVII deployed to MO RVIII (Team 1) deployed to SD & CO RIX (Teams 1 & 2) deployed to CNMI RX (Team 1) deployed to WA	<ul style="list-style-type: none"> • Green: 7 or more avail • Yellow: 4 - 6 teams available • Red: > 8 teams deployed/unavailable <i>R-IMAT also red if TL Ops/Log Chief is unavailable & has no qualified replacement</i>
MCOV	Green	59	48	81%	0	11	0		<ul style="list-style-type: none"> • Green = 80 – 100% avail • Yellow = 60 – 79% avail • Red = 59% or below avail • Readiness remains 95%

FEMA Readiness – National/Regional Teams



National/Regional Teams									
Resource	Status	Total	FMC Available		Partially Available	Not Available	Status	Comments	Rating Criterion
NWC		5	5	100%	0	0	24/7		<ul style="list-style-type: none"> • Green = FMC • Yellow = PMC • Red = NMC
NRCC		2	344	89%	0	44	Not Activated		
HLT		1	N/A	N/A	0	0	Activated		
DEST							Not Activated		
RRCCs		10	10	100%	0	0	Not Activated		
RWCs/MOCs		10	10	100%	0	0	Not Activated		

2015 National Preparedness Month (NPM)



Don't Wait – Communicate – Make Your Emergency Plan Today

Week 1 Theme: Flood

- This week (sept 1-5) focuses on flooding
- Leads up to National PrepareAthon! Day (Sept 30)

Awareness

- Flooding is the most common natural weather event
- Can occur in every state; during any season
- Can develop slowly or quickly (flash flooding)
- Flooding changes familiar places (walkways, roads, fields, etc.)
- Avoid walking through water; 6 inches of moving water can sweep you off your feet
- Never drive through flooded roads; 1 foot of water is enough to make most cars float (turn around – don't drown)

BEFORE

- ✓ Build an emergency kit.
- ✓ Make a family communications plan.
- ✓ Tell an adult if you hear a flood warning on the TV or radio.

DURING

- ✓ Listen to authorities and safety officials.
- ✓ If there is any possibility of a flash flood, move immediately to higher ground.
- ✓ Help your family move important items to an upper floor.
- ✓ Do not walk through moving water. Even 6" of water can make you fall.

AFTER

- ✓ Stay away from flood water. It could be contaminated, meaning contain dangerous substances.
- ✓ Stay away from moving water. It can knock you off your feet.
- ✓ Stay out of the way of emergency workers so they can do their job easily.

WORDS TO KNOW

Flood Watch A message that flooding is possible and to listen to local radio or TV news and weather for more information. You may receive an alert on a cell phone.

Flood Warning A message that flooding will occur soon, if it hasn't already, and to move to higher ground or evacuate immediately

Flash Flood A flood that can happen within minutes or hours of heavy rainfall, a dam or levee failure, or city drains overflowing

Levee/Dam A manmade structure to contain or prevent water from moving past a certain point

For additional information:

- Ready.gov
- [Know the Facts](#)
- [Flood Safety/Social Media](#)



FEMA

FEMA's mission is to support our citizens and first responders to ensure that as a nation we work together to build, sustain, and improve our capability to prepare for, protect against, respond to, recover from, and mitigate all hazards.