

The Disaster Center is dedicated to the idea that disaster mitigation is cost effective and individuals pursuing their own interest are the greatest potential force for disaster reduction.

Please consider making a small donation to the Disaster Center



When disaster mitigation is cost effective, we are on the road to bringing disasters to an end.



# **FEMA**

## **Daily Operations Briefing**

**Saturday, September 6, 2014**

**8:30 a.m. EDT**

# Significant Activity: Sep 5-6



## **Significant Events:**

- Severe Weather Outbreak – MI & IL
- Bridge Fire, CA

## **Tropical Activity:**

- Atlantic – Disturbance 1 (Low/0%); Disturbance 2 (Low/10%)
- Eastern Pacific – Hurricane Norbert
- Central Pacific – No tropical cyclones expected through Sunday night

## **Significant Weather:**

- Slight risk of severe thunderstorms – Mid-Atlantic to Northeast
- Flash flooding possible – Southwest
- Elevated Fire Weather / Red Flag Warnings: CA & OR

**FEMA Readiness:** No activity

## **Declaration Activity:**

- Request for a Major Disaster Declaration – VT
- FMAG approved for Bridge Fire, CA

# Severe Weather Outbreak – MI & IL

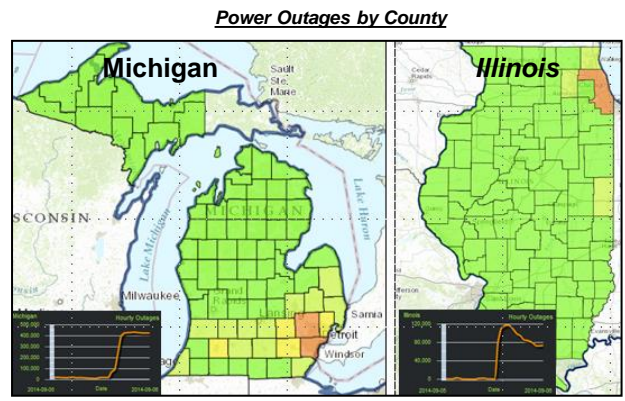
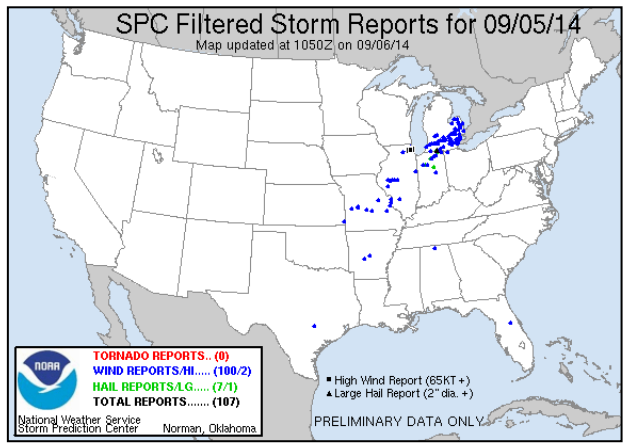


## September 5-6, 2014

- Strong thunderstorms and damaging winds moved through MI & IL
- No fatalities or major/widespread property damage reported
- Widespread power outages in northeast IL and southern MI
  - MI: 419k (peak 431k) outages
  - IL: 70k (peak 118k) outages (*\*DOE EAGLE-I; 5:00 am EDT, Sep 6*)
  - Restoration expected to most customers by Sunday evening

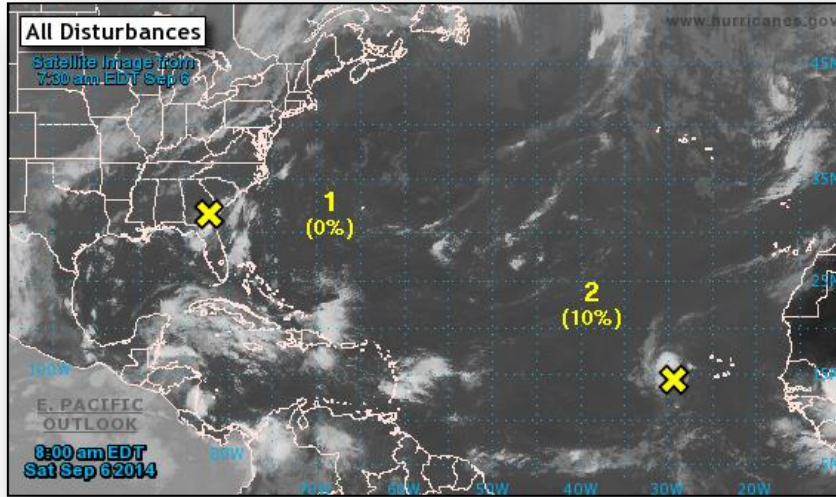
## Response

- No shelters are open (*ARC Midnight Shelter Report, Sep 6*)
- MI EOC remains partially activated (for severe weather August 11)
- IL EOC remains at normal operations
- FEMA Region V remains at Watch/Steady State
- No shortfalls or requests for FEMA assistance



*\*Note: Outage data and graphics provided by the DOE's EAGLE-I system. Comprehensive National coverage of all electrical service providers is not available*

# 2-Day Tropical Outlook – Atlantic



## Disturbance 1 (as of 8:00 a.m. EDT)

- Located near coast of Georgia
- Producing disorganized cloudiness and showers
- Drifting NE over the southeastern US
- Development is unlikely
- Formation chance:
  - Next 48 hours: Low (0%)
  - Next 5 days: Low (10%)

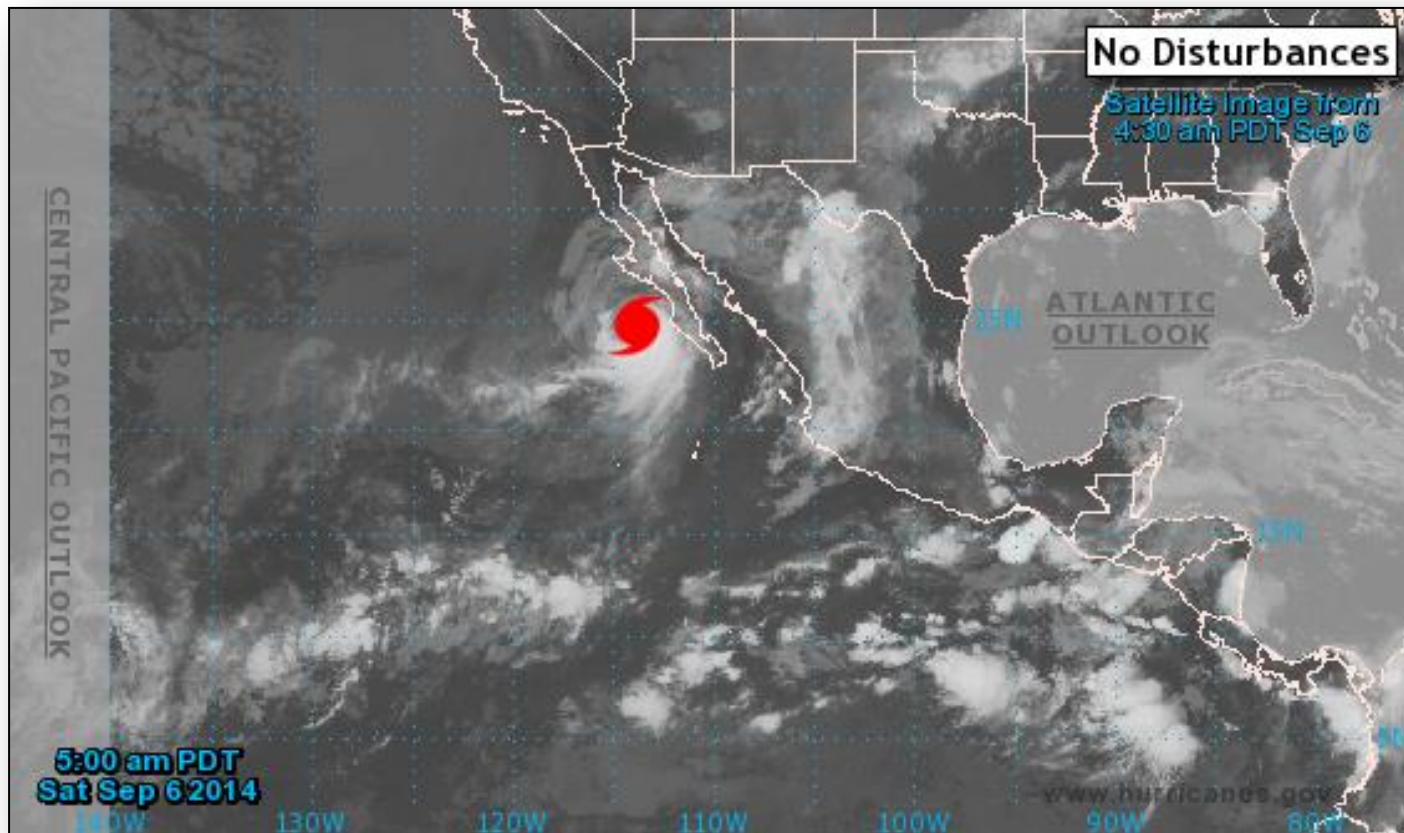
## Disturbance 2 – Invest 90L (as of 8:00 a.m. EDT)

- Located a few hundred miles WSW of Cape Verde Islands
- Increased shower activity
- Significant development not expected due to unfavorable air mass over tropical Atlantic Ocean
- Formation chance:
  - Next 48 hours: Low (10%)
  - Next 5 days: Low (10%)

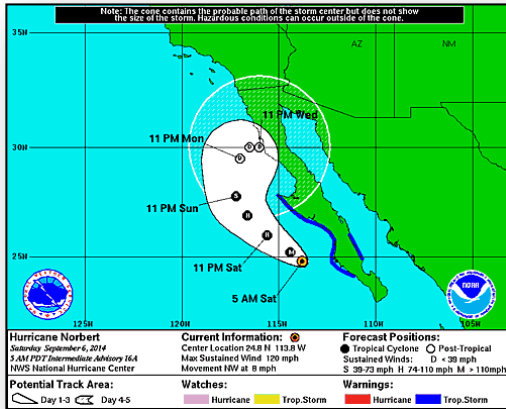
# 2-Day Tropical Outlook – Eastern Pacific



FEMA

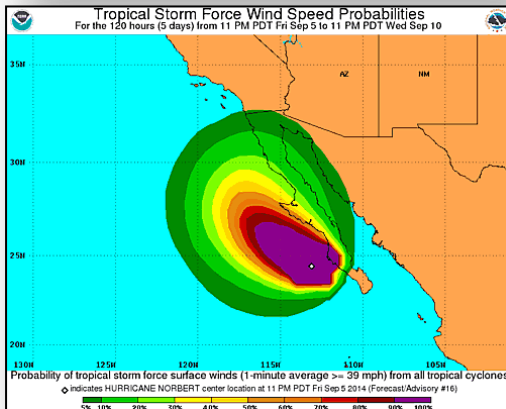


# Hurricane Norbert – Eastern Pacific

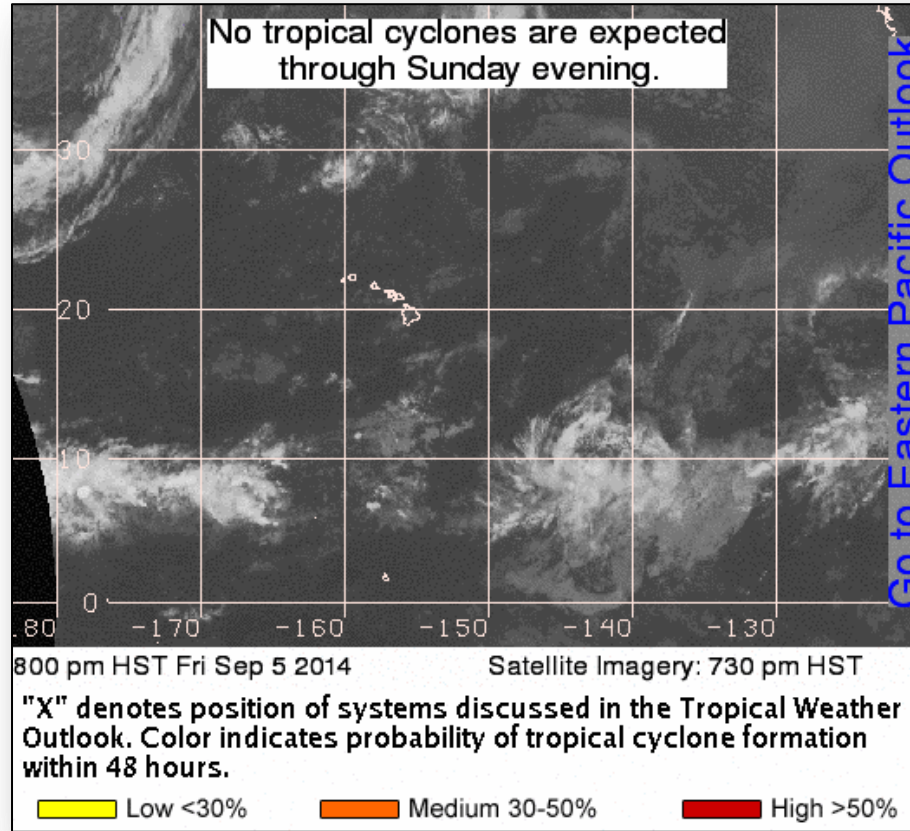


## Hurricane Norbert (as of 8:00 a.m. EDT) (Cat 3)

- Located 95 miles W of Cabo San Lazaro, Mexico
- Moving NW at 8 mph
- Maximum sustained winds 120 mph
- General NW motion with decrease in forward speed expected next couple of days
- On forecast track, center will move parallel to west coast of Baja California peninsula through the weekend
- Weakening later today or tonight as it moves over colder water
- Hurricane-force winds extend 45 miles
- Tropical storm-force winds extend 140 miles
- Tropical Storm Warnings in effect for east coast of Baja California peninsula



# 2-Day Tropical Outlook – Central Pacific





# Bridge Fire – California



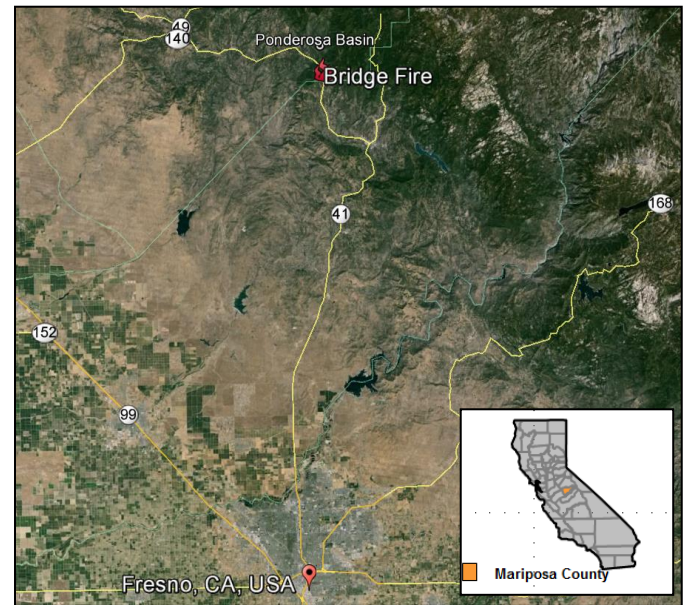
Fire Name	Location	Acres burned	% Contained	Est. Full Containment	FMAG	Structures Lost / Threatened	Fatalities / Injuries
Bridge Fire	Mariposa County	300	10%	unknown	Approved September 5, 2014	0 / 707 (700 homes)	0 / 1

**Situation**

- Started Sep 5; burning on State/private land approx. 40 mi N of Fresno
- Threatening community of Ponderosa Basin (pop. 3,200)
- Mandatory evacuation in effect for approx. 1,300 residents
- 1 shelter open with 26 occupants *(ARC Midnight Shelter Report, Sep 6)*

**Response**

- 746 total personnel—including a Type I IMT—are supporting the fire fight
- State EOC remains partially activated (due to previous State events)
- FEMA Region IX remains at Watch/Steady State



# Wildfire Summary



Fire Name (County)	FMAG #	Acres Burned	% Contained Est. Containment date	Evacuations (Residents)	Structures Threatened	Structures Destroyed	Fatalities / Injuries
<b>California (2)</b>							
Bridge Fire (Mariposa County)	Approved Sep 5, 2014	300	10%	Mandatory	707 (700 homes)	0	0 / 1
Happy Camp Complex (Siskiyou County)	Not requested	82,956 (+5,997)	25% (+6%)	Mandatory	743 (695 homes)	0	0 / 10

# FMAG Requests and Declarations



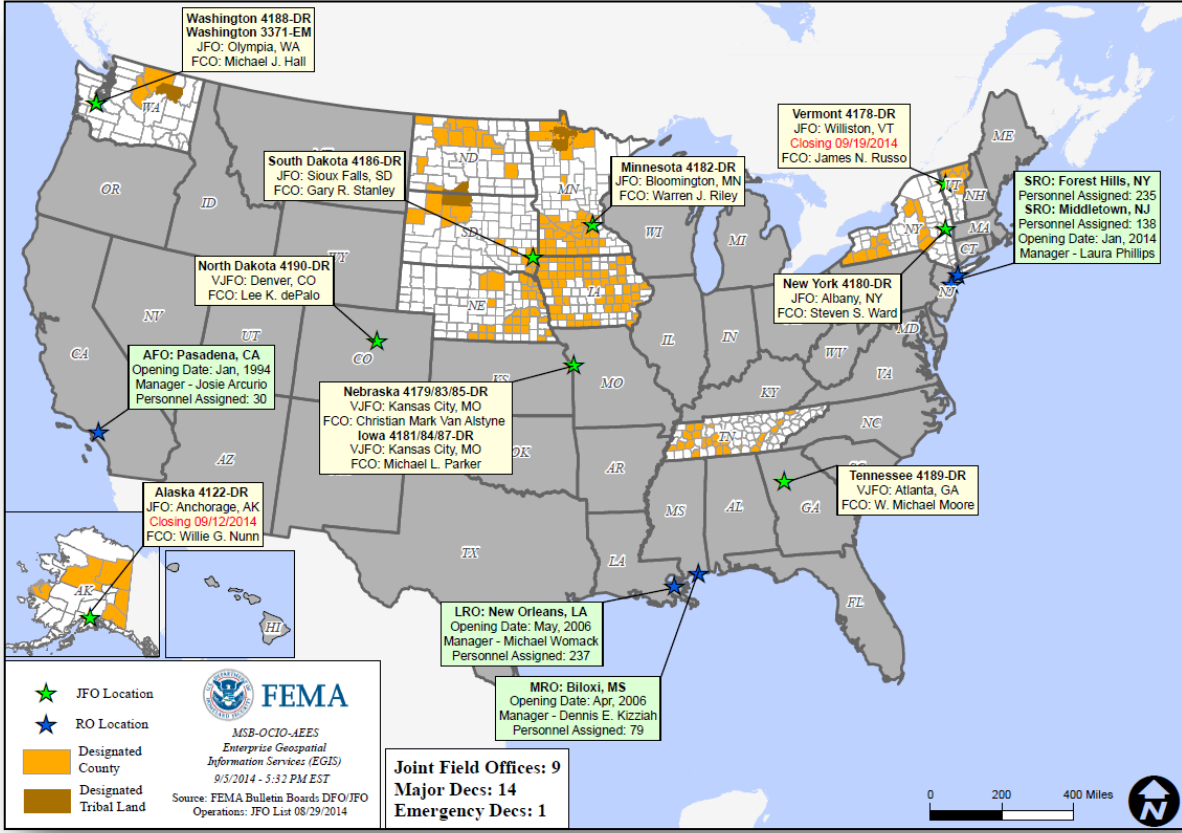
Action (since last report)		Total	FMAG No. and State		
Requests DENIED		0			
Requests APPROVED		1	Approved September 5, 2014 Bridge Fire, CA		
Approved FMAG Data					
Year	Current YTD	MTD	Monthly Average	Cumulative Acres Burned YTD	Cumulative Denied FMAGs YTD
2014	26	0	10	130,858	1
Year	Total Previous FY	++ Yearly Average		Total Acres Burned Previous Year	Total Denied FMAGs Previous Year
2013	29	64		374,417	8
* Reflects the 3-year average for current month/ ** Reflects 3-year total average					

# Disaster Requests & Declarations



Declaration Requests in Process		Requests APPROVED (since last report)	Requests DENIED (since last report)
4	Date Requested	0	0
AS – DR Severe Storms, Flooding, and Landslides	August 25, 2014		
GU – DR Typhoon Halong	August 30, 2014		
CA – DR Earthquake	September 2, 2014		
VT - DR Severe Storms and Flooding	September 5, 2014		

# Open Field Offices as of September 6, 2014

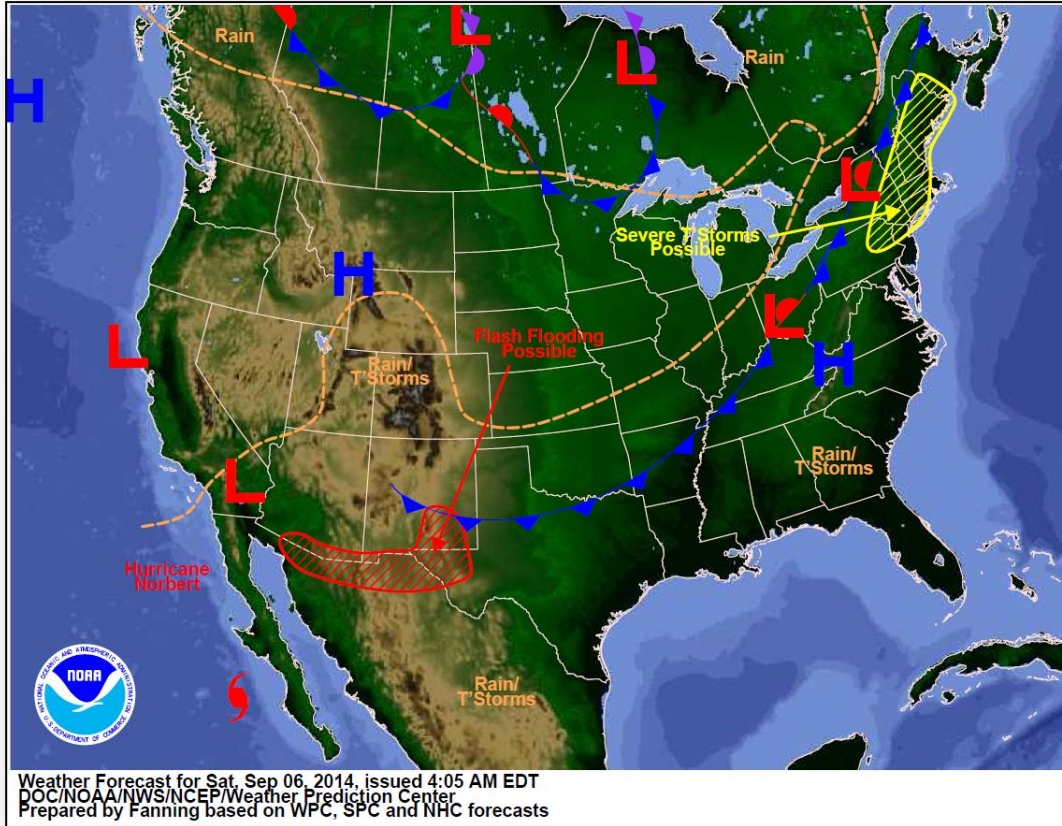


# Joint Preliminary Damage Assessments

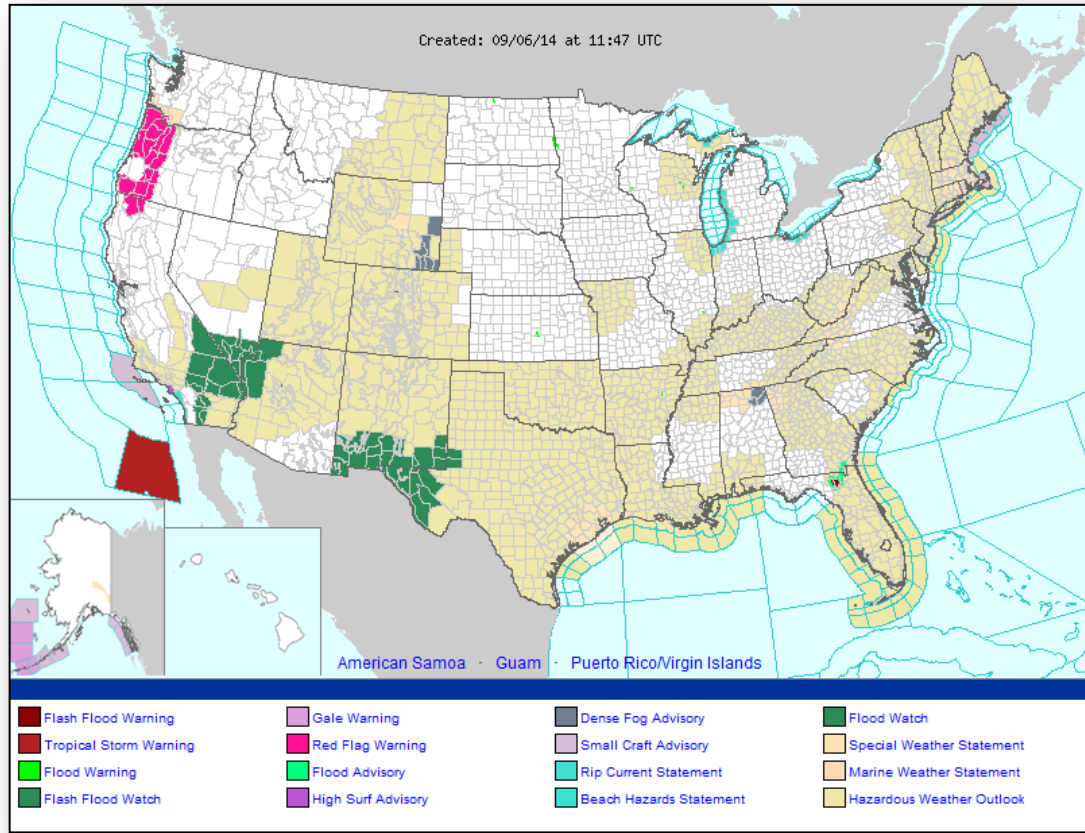


Region	State / Location	Event	I/PA	Number of Counties		Start – End
				Requested	Complete	
V	MI	Heavy Rainfall & Flooding August 11 – 12, 2014	IA	3	3	8/26 – 8/29
			PA	3	0	9/3 – TBD
VIII	MT	Severe Storms & Flooding August 21 – 28, 2014	PA	6	0	9/22 – TBD

# National Weather Forecast



# Active Watches/Warnings

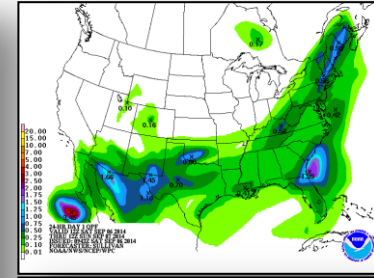
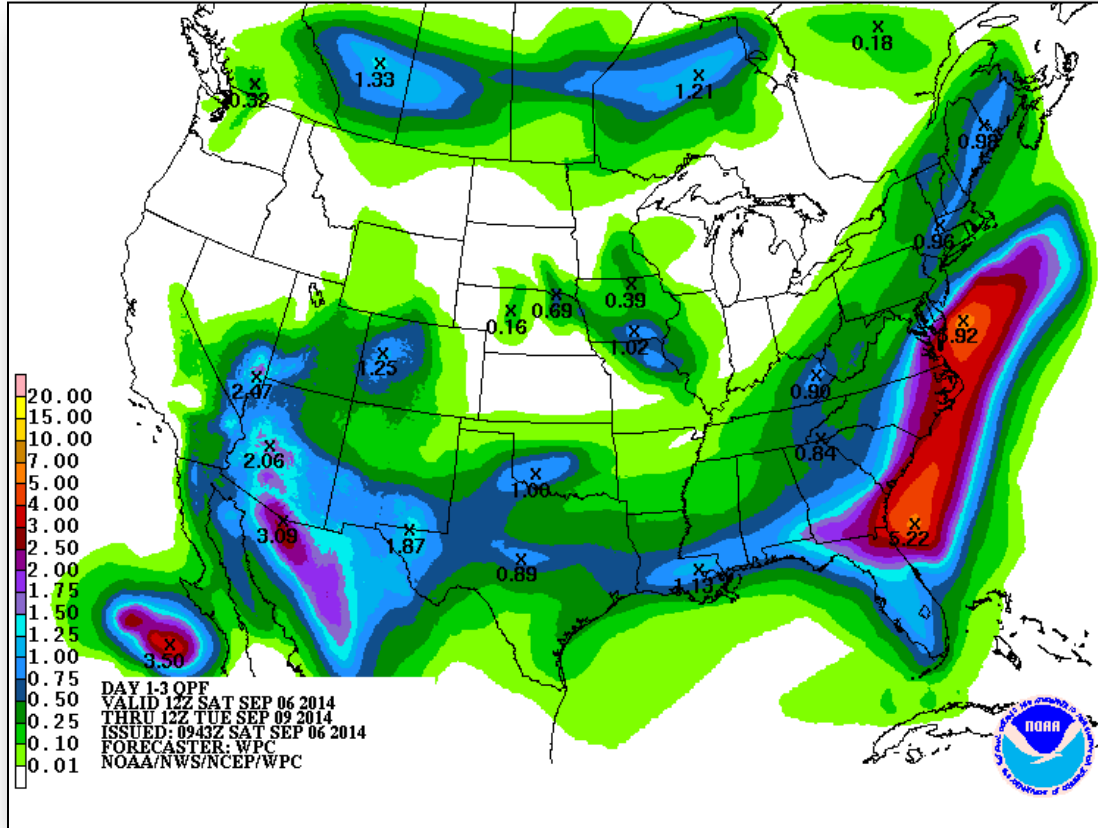




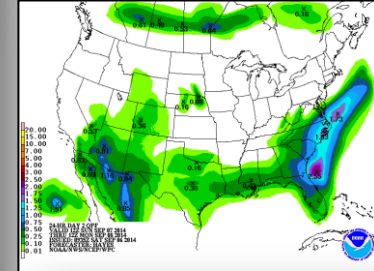
# Precipitation Forecast – 3 Day



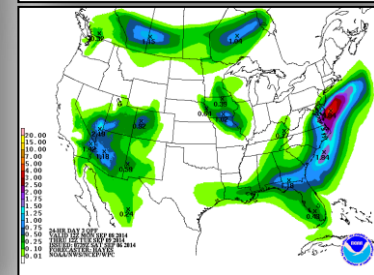
FEMA



Day 1



Day 2

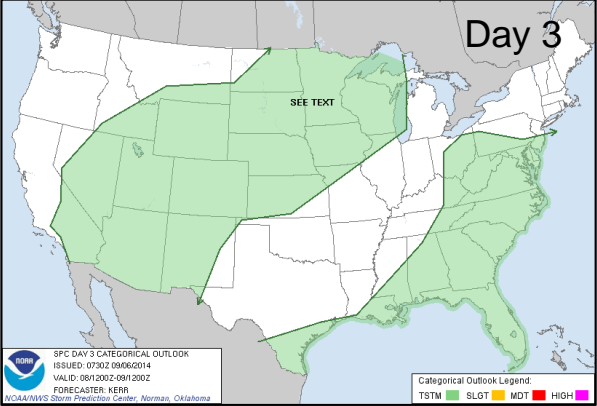
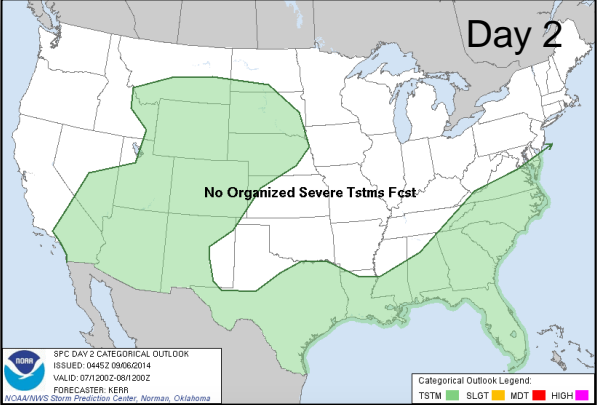
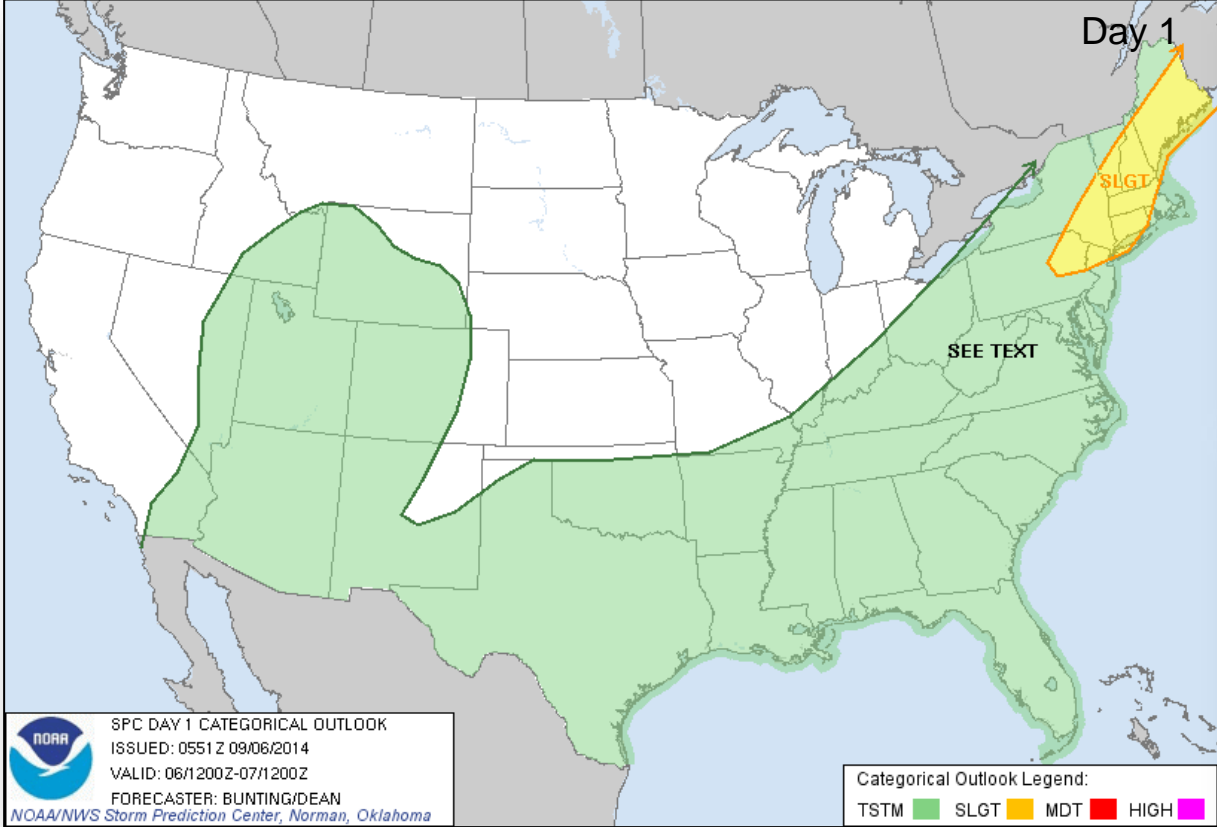


Day 3

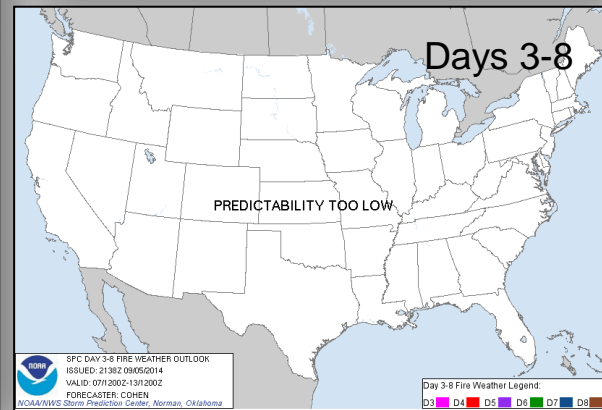
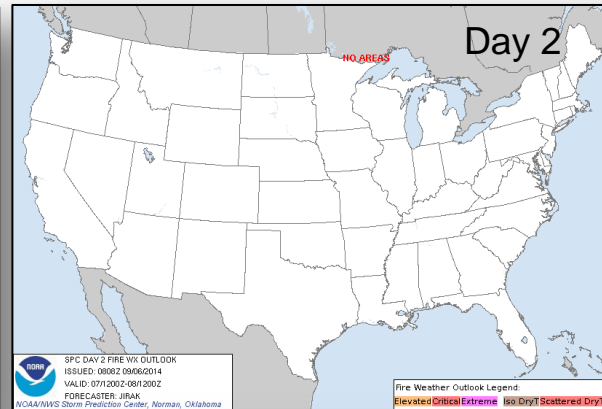
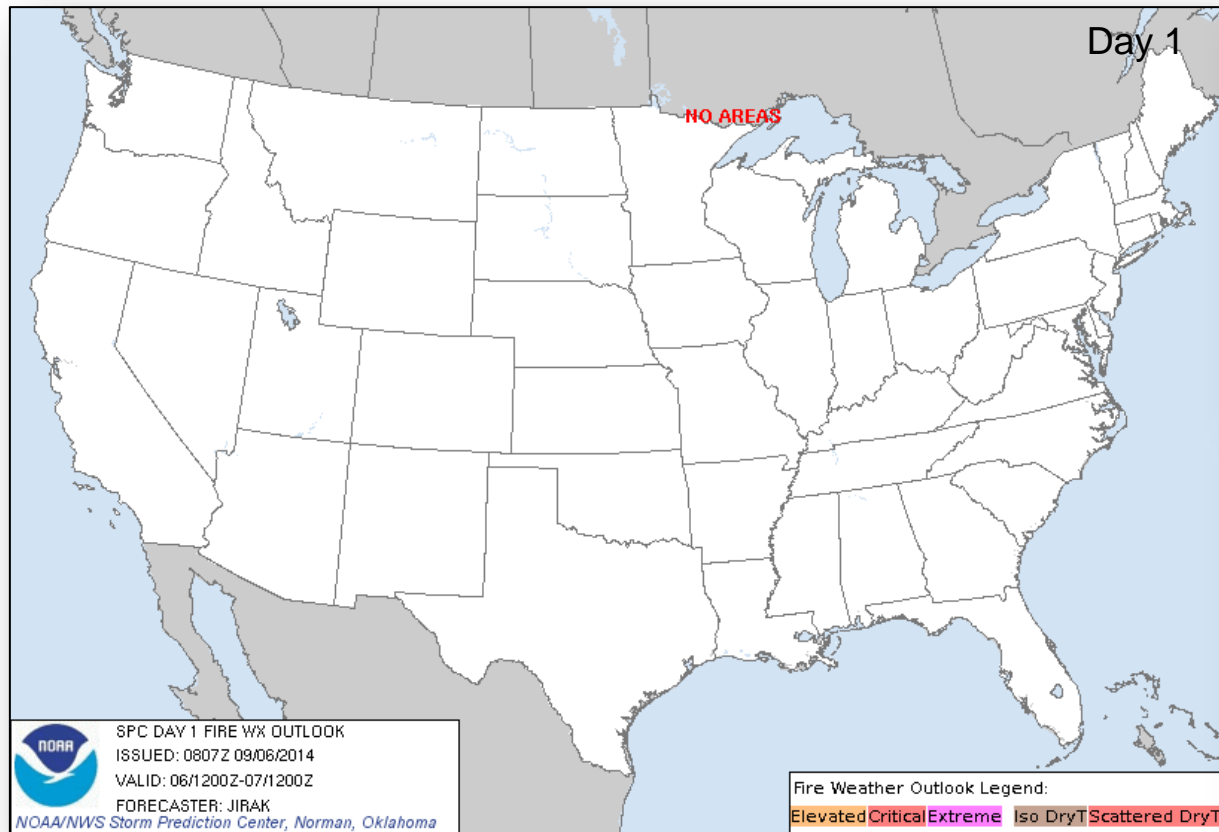
# River Forecast



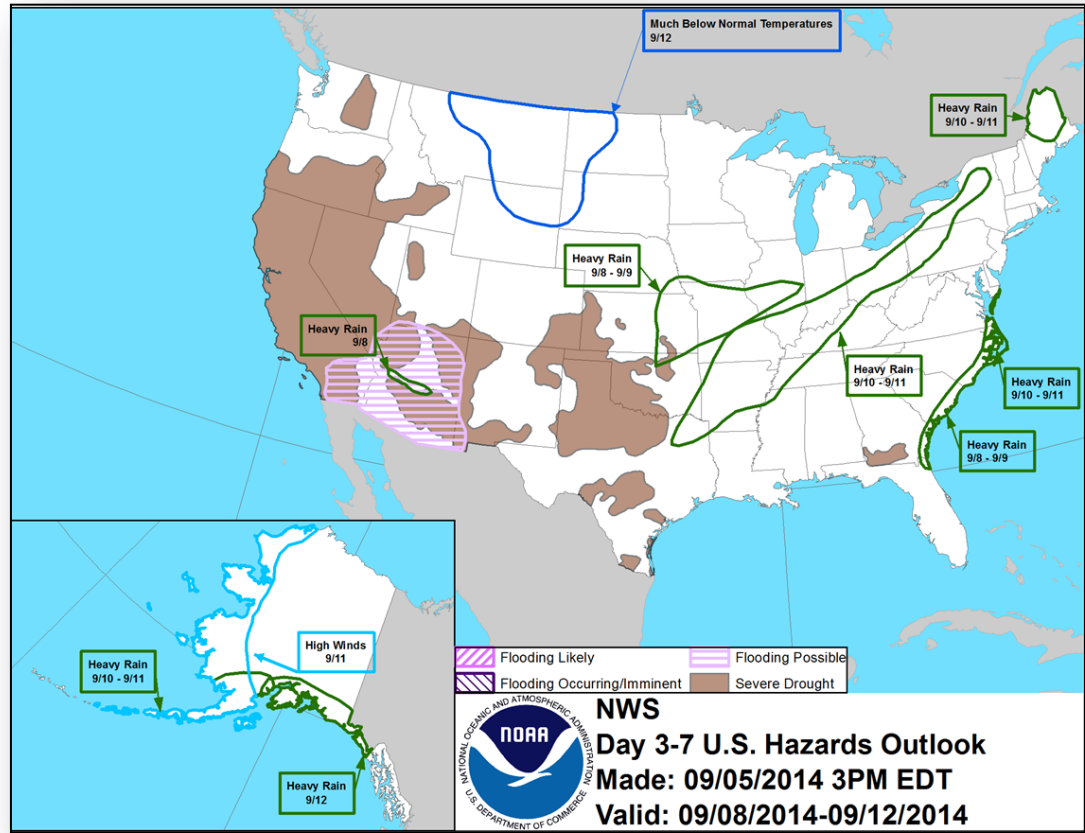
# Convective Outlook, Days 1 – 3



# Fire Weather Outlook, Days 1 – 8



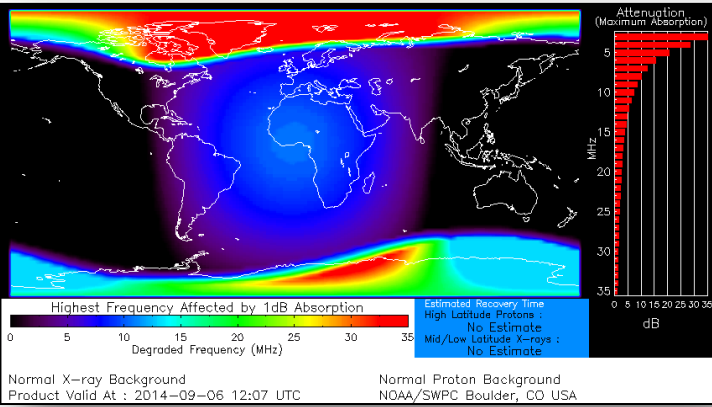
# Hazard Outlook: September 8 – 12



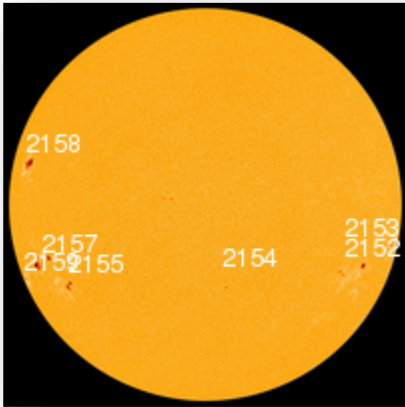
# Space Weather

NOAA Scales Activity (Range: 1/minor to 5/extreme)	Past 24 Hours	Current	Next 24 Hours
Space Weather Activity:	None	None	Minor
• Geomagnetic Storms	None	None	G1
• Solar Radiation Storms	None	None	S1
• Radio Blackouts	None	None	R1

## HF Communication Impact



## Sunspot Activity



# FEMA Readiness – Deployable Teams/Assets



Deployable Teams/Assets									
Resource	Status	Total	Available		Partially Available	Not Available	Detailed Deployed Activated	Comments	Rating Criterion
FCO	Green	39	18	46%	0	1	20		OFDC Readiness: FCO    Green    Yellow    Red Type 1   3+        2        1 Type 2   4+        3        2 Type 3   4         3        2 FDRC     3         2        1
FDRC		10	6	60%	0	0	4		
US&R	Green	28	26	93%	1	1	0	<ul style="list-style-type: none"> <li>NM-TF1 (Red for personnel shortages)</li> <li>CA-TF1 (Yellow for logistics &amp; management)</li> </ul>	<ul style="list-style-type: none"> <li>Green = Available/FMC</li> <li>Yellow = Available/PMC</li> <li>Red = Out-of-Service</li> <li>Blue = Assigned/Deployed</li> </ul>
National IMAT	Yellow	3	2	67%	0	0	1	National IMAT West to CA	<ul style="list-style-type: none"> <li>Green: 3 avail</li> <li>Yellow: 1-2 avail</li> <li>Red: 0 avail (<i>Individual N-IMAT red if 50% of Section Chiefs and/or Team Leader is unavailable for deployment.</i>)</li> </ul>
Regional IMAT	Yellow	13	5	38%	3	4	1	<u>Partially Mission Capable (PMC):</u> <ul style="list-style-type: none"> <li>Region II, III, VI</li> </ul> <ul style="list-style-type: none"> <li><u>Not Mission Capable (NMC):</u></li> <li>Region V, VII, IX (Team 1), VI (Team 2)</li> </ul> <u>Deployed</u> <ul style="list-style-type: none"> <li>Region X to WA</li> </ul>	<ul style="list-style-type: none"> <li>Green: 7 or more avail</li> <li>Yellow: 4 - 6 teams available</li> <li>Red: &gt; 8 teams deployed/unavailable</li> </ul> <p><i>R-IMAT also red if TL Ops/Log Chief is unavailable and has no qualified replacement.</i></p>
MCOV	Green	60	54	90%	0	6	0		<ul style="list-style-type: none"> <li>Green = 80 – 100% avail</li> <li>Yellow = 60 – 79% avail</li> <li>Red = 59% or below avail</li> <li>Readiness remains 95%</li> </ul>

# FEMA Readiness – National/Regional Teams



National/Regional Teams									
Resource	Status	Total	Available		Partially Available	Not Available	Deployed/ Activated	Comments	Rating Criterion
NWC		5	5	100%	0	0	24/7		<ul style="list-style-type: none"> <li>• Green = FMC</li> <li>• Yellow = PMC</li> <li>• Red = NMC</li> </ul>
NRCC		2	344	89%	0	44	Not Activated		
HLT		1	N/A	N/A	0	1	Activated		
DEST							Not Activated		
RRCCs		10	10	100%	0	0	None		
RWCs/MOCs		10	10	100%	0	0	24/7		





# FEMA

**FEMA's mission is to support our citizens and first responders to ensure that as a nation we work together to build, sustain, and improve our capability to prepare for, protect against, respond to, recover from, and mitigate all hazards.**