

The Disaster Center is dedicated to the idea that disaster mitigation is cost effective and individuals pursuing their own interest are the greatest potential force for disaster reduction.

Please consider making a small donation to the Disaster Center



When disaster mitigation is cost effective, we are on the road to bringing disasters to an end.



# **FEMA**

## **Daily Operations Briefing**

**Sunday, September 6, 2015**

**8:30 a.m. EDT**

# Significant Activity: Sep 6-7



**Significant Events:** None

## **Tropical Activity:**

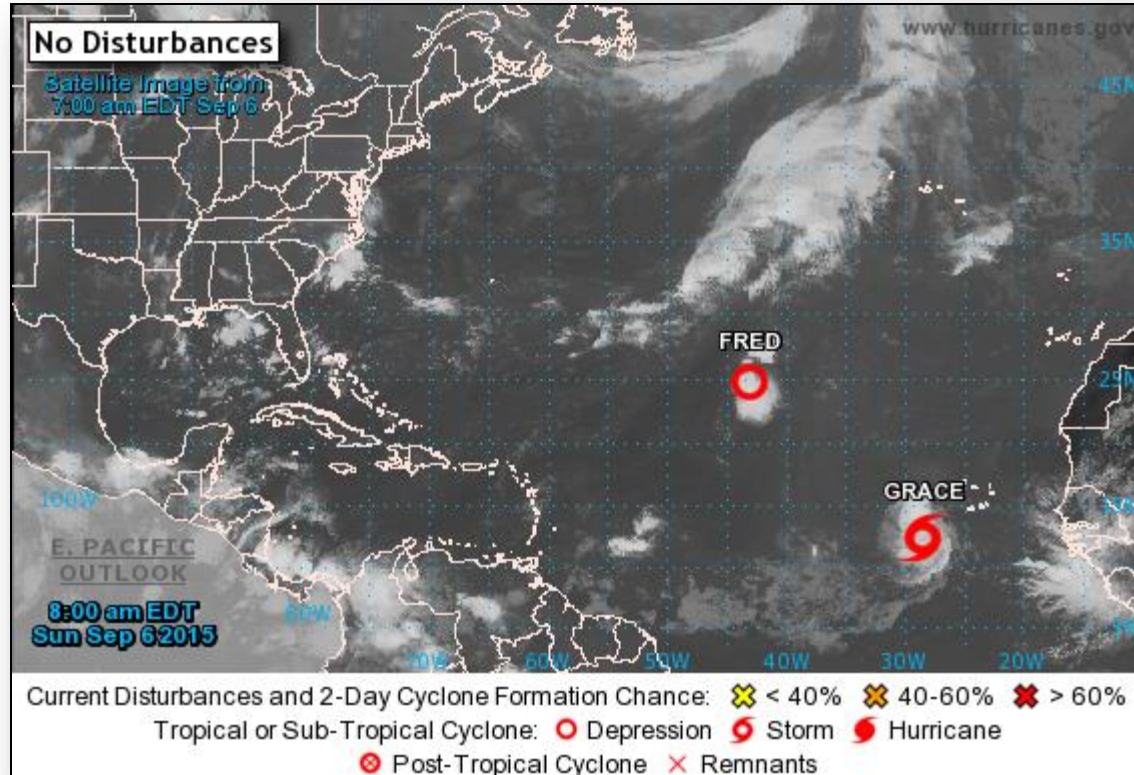
- Atlantic: Tropical Storm Grace; Tropical Depression Fred
- Eastern Pacific: Tropical Disturbance Fifteen -E
- Central Pacific: Tropical Storm Jimena
- Western Pacific: No significant activity affecting U.S. territories

## **Significant Weather:**

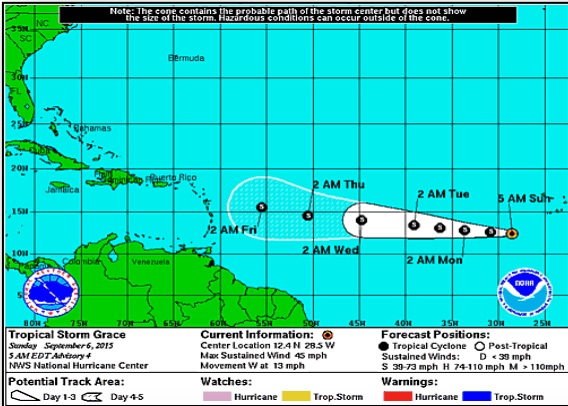
- Flash flooding – Central Plains to Middle Mississippi Valley
- Severe Thunderstorms – Northern Plains, Middle Mississippi Valley and Great Lakes
- Rain & snow – Northern Rockies
- Red Flag Warnings – UT & WY
- Critical/Elevated Fire Weather area – CA, NV, ID, UT & WY
- Space weather: Past 24 hours – None; next 24 hours – none

**Declaration Activity:** None

# 2 – Day Tropical Outlook – Atlantic

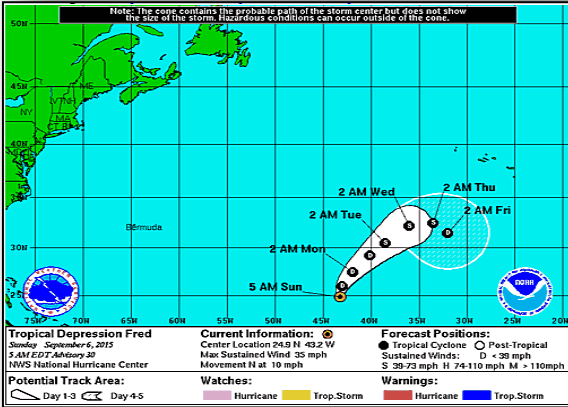


# Atlantic – TS Grace/TD Fred



## Tropical Storm Grace – Advisory #4 : (As of 5:00 a.m. EDT)

- Located 390 miles SW of the Cape Verde Islands
- Moving W near 13 mph; general motion with a slight increase in forward speed expected through Monday
- Maximum sustained winds near 45 mph with higher gusts
- Some additional strengthening forecast the next 36-48 hours
- Tropical storm-force winds extend outward up to 60 miles



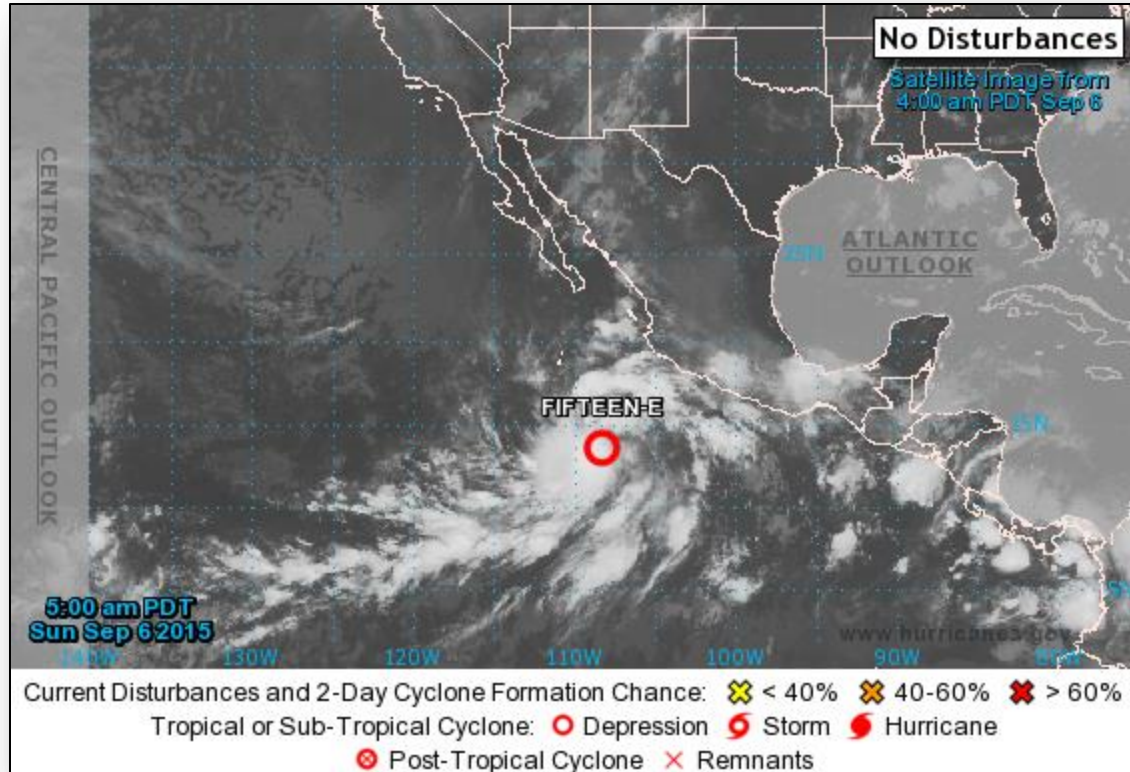
## Tropical Depression Fred - Advisory #30: (As of 5:00 a.m. EDT)

- Located 1,310 miles SW of the Azores
- Moving N near 10 mph; a turn toward the NE expected later today, this general motion forecast through Monday
- Maximum sustained winds near 35 mph with higher gusts
- No significant change in strength forecast during next 48 hours

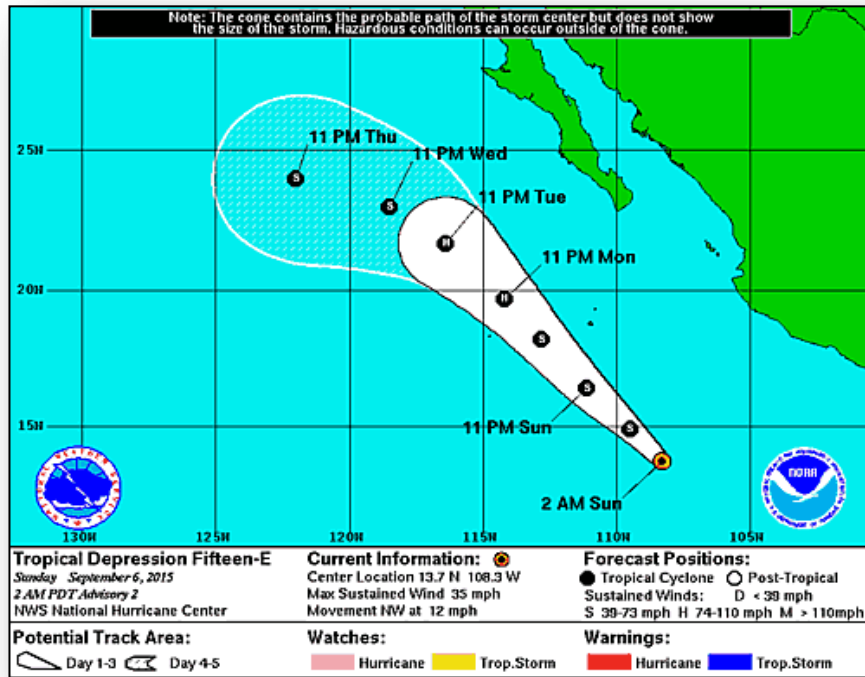
# 2 – Day Tropical Outlook – Eastern Pacific



FEMA



# Eastern Pacific – TD Fifteen-E

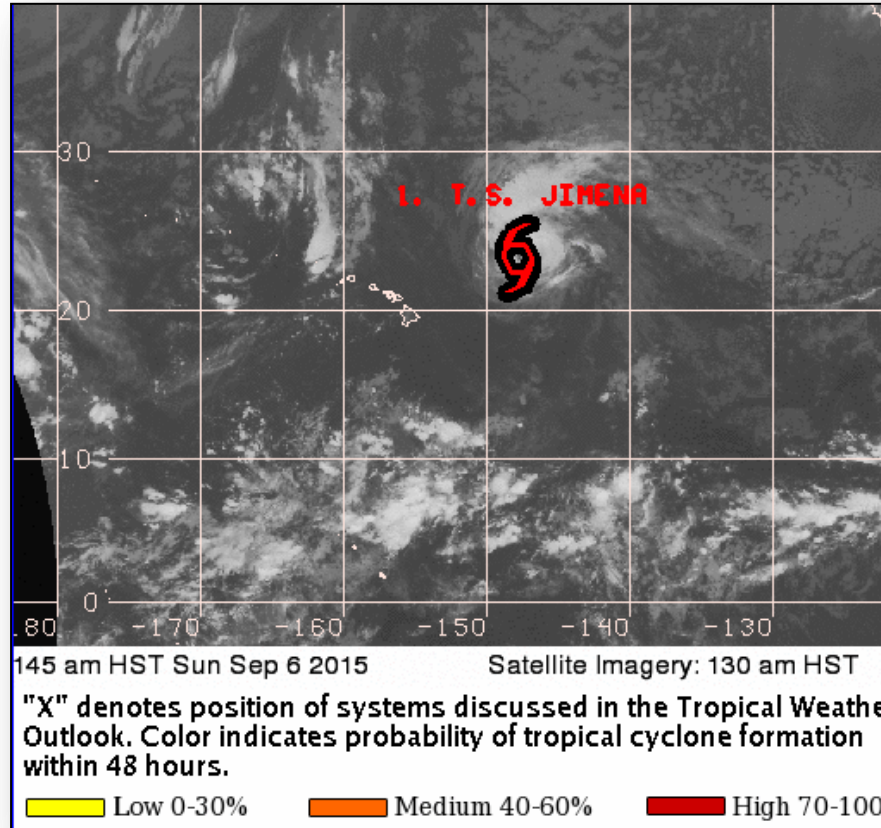


## Tropical Depression Fifteen-E - Advisory #2:

(as of 5:00 a.m. EDT)

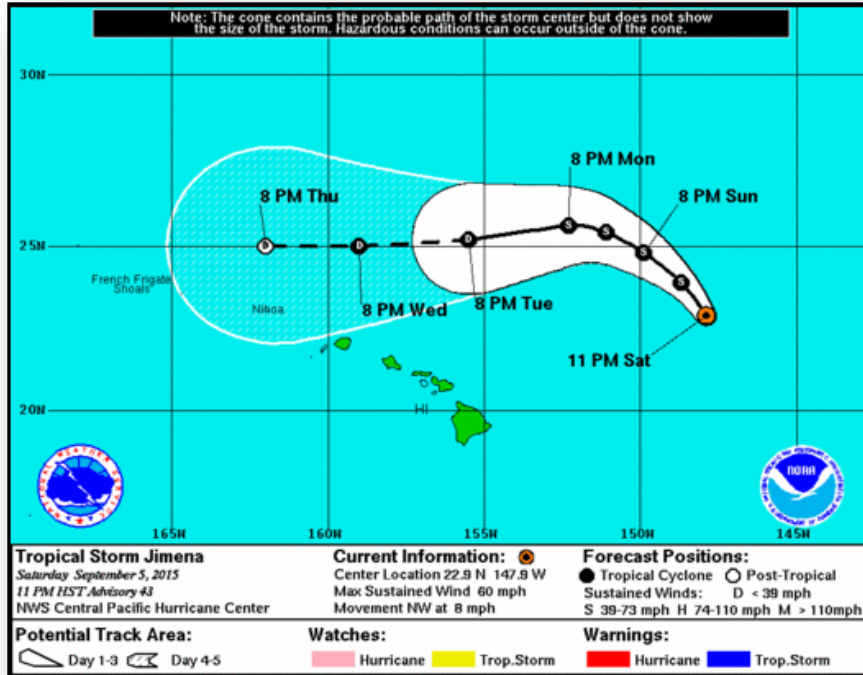
- Located 645 miles S of the Southern tip of Baja California
- Moving NW at 12 mph; general motion expected to continue for the next couple of days
- Maximum sustained winds near 35 mph with higher gusts
- Forecast to become a tropical storm today; could become a hurricane by late Monday

# 2 – Day Tropical Outlook – Central Pacific





# Central Pacific – Tropical Storm Jimena



## Tropical Storm Jimena - Advisory #43: (as of 5:00 a.m. EDT)

- Located 650 miles ENE of Honolulu, HI
- Moving NW near 8 mph; forward speed expected over the next couple of days; gradual turn W expected on Monday
- Maximum sustained winds near 60 mph with higher gusts
- Weakening is forecast to continue over the next few days
- Tropical storm-force winds extend outward up to 205 miles
- No coastal watches or warnings in effect

# Wildfire Summary



FEMA

Fire Name (County)	FMAG #	Acres burned	% Contained	Evacuations (Residents)	Structures Threatened	Structures Damaged/ Destroyed	Fatalities/ Injuries
<b>Washington (2)</b>							
Kettle Complex (Ferry County)	FEMA-5101-FM-WA <i>Approved Aug 14</i> FEMA-5108-FM-WA <i>Approved Aug 21</i>	76,780 (-84)	44% (+1)	None	4,569 (2,894 homes)	0/2 (1 home)	0/4 (+1)
North Star Complex (Okanogan County)	No FMAG Requested	208,145 (+504)	35% (+5)	Mandatory/ Voluntary 1,909	4,225 (3,000 homes)	0/0	0/0
<b>Oregon (1)</b>							
Grizzly Bear Complex (Wallowa County)	FEMA-5107-FM-OR <i>Approved Aug 21</i>	75,268 (+559)	37% (+7)	None	75 (45 homes)	0/33 (5 homes)	0/6
<b>Idaho (1)</b>							
TePee Springs Fire (Idaho County)	FEMA-5110-FM-ID <i>Approved Aug 29</i>	94,655 (+1,553)	50% (+5)	Mandatory/ Voluntary (Unknown)	1,000 (500 homes)	0/2	0/2

# Disaster Requests & Declarations



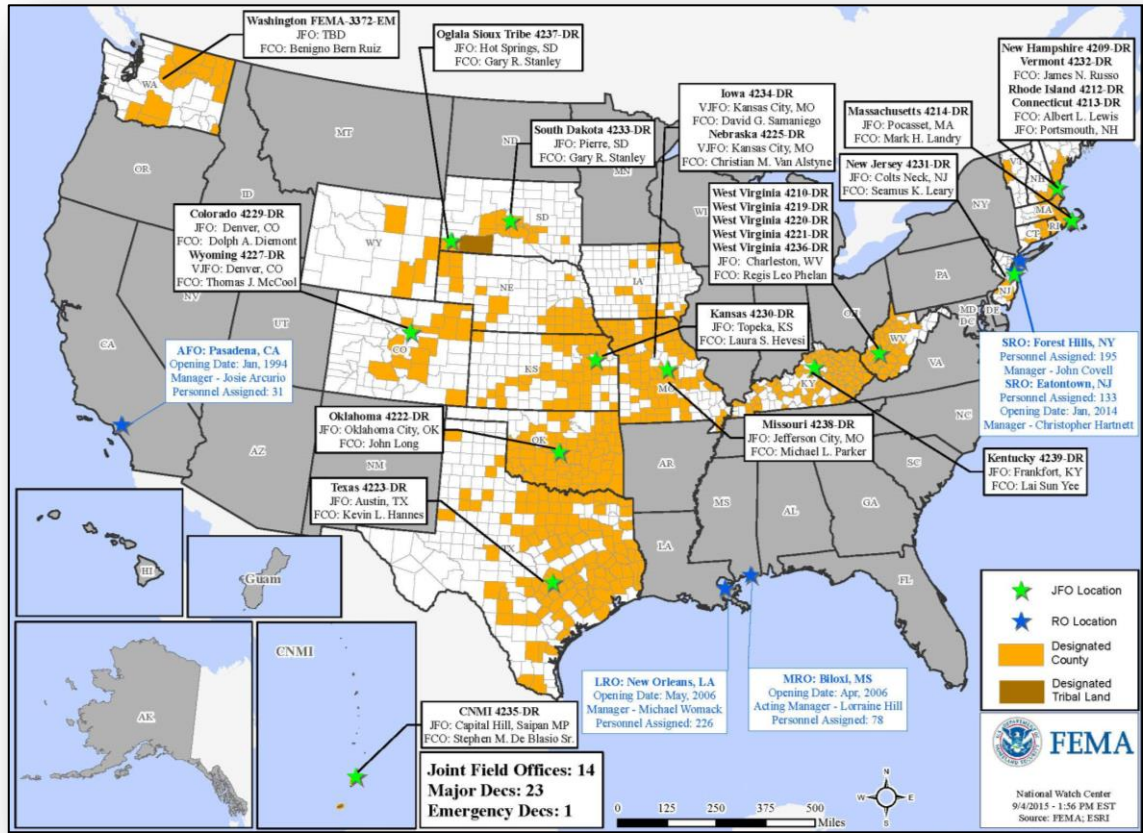
<b>Declaration Requests in Process</b>		<b>Requests APPROVED (since last report)</b>	<b>Requests DENIED (since last report)</b>
<b>1</b>	<b>Date Requested</b>	<b>0</b>	<b>0</b>
<b>IN – DR Severe Storms, Tornadoes, Straight-line Winds, and Flooding</b>	<b>August 31, 2015</b>		

# Disaster Amendments



Amendment	Effective Date	Action
Amendment No. 2 to FEMA-4228-DR-LA	September 4, 2015	Adds West Feliciana Parish for Public Assistance

# Open Field Offices as of September 6

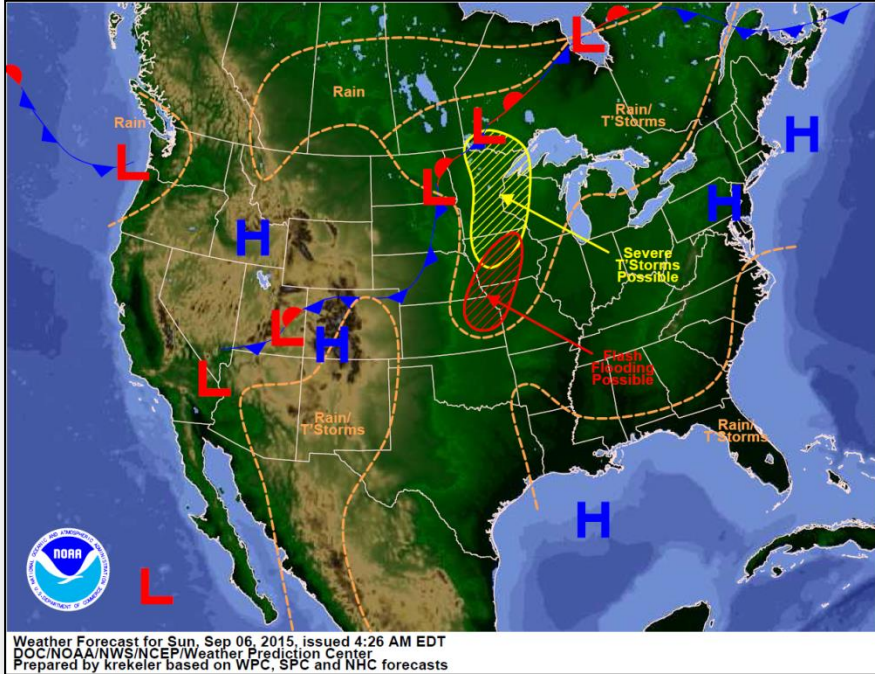


# Joint Preliminary Damage Assessments

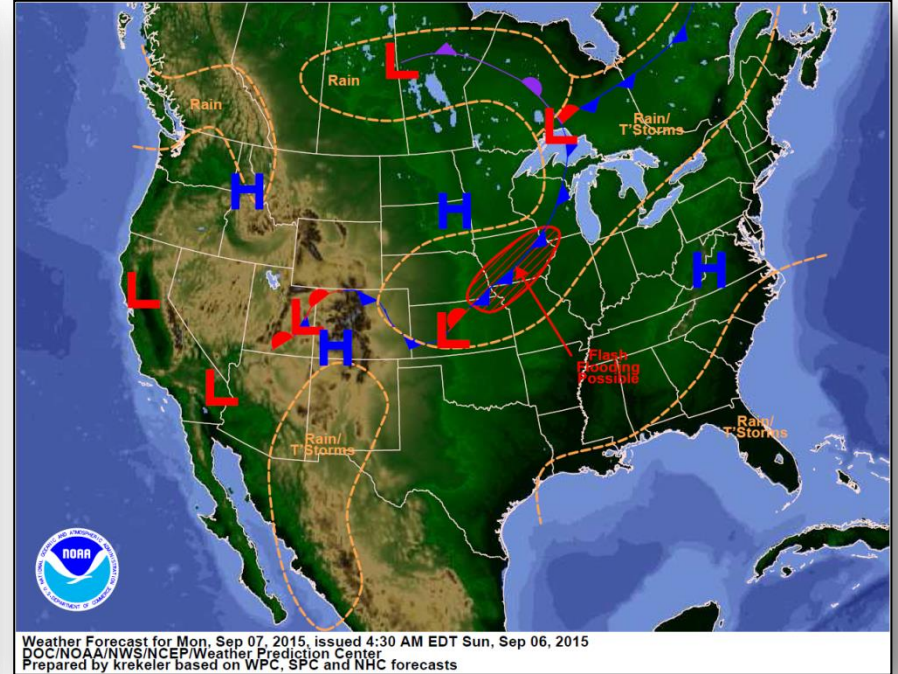


Region	State / Location	Event	I/PA	Number of Counties		Start – End
				Requested	Complete	
VIII	CO	Severe Storms & Flooding April – June, 2015	IA	1	1	9/3 – 9/3
X	WA	Wildfires June 29, 2015 & ongoing	IA	5	0	9/14 – TBD
			PA	5	0	9/14 – TBD
X	Colville Reservation (WA)	Wildfires June 29, 2015 & ongoing	IA	1	0	9/14 – TBD
			PA	1	0	9/14 – TBD

# National Weather Forecast

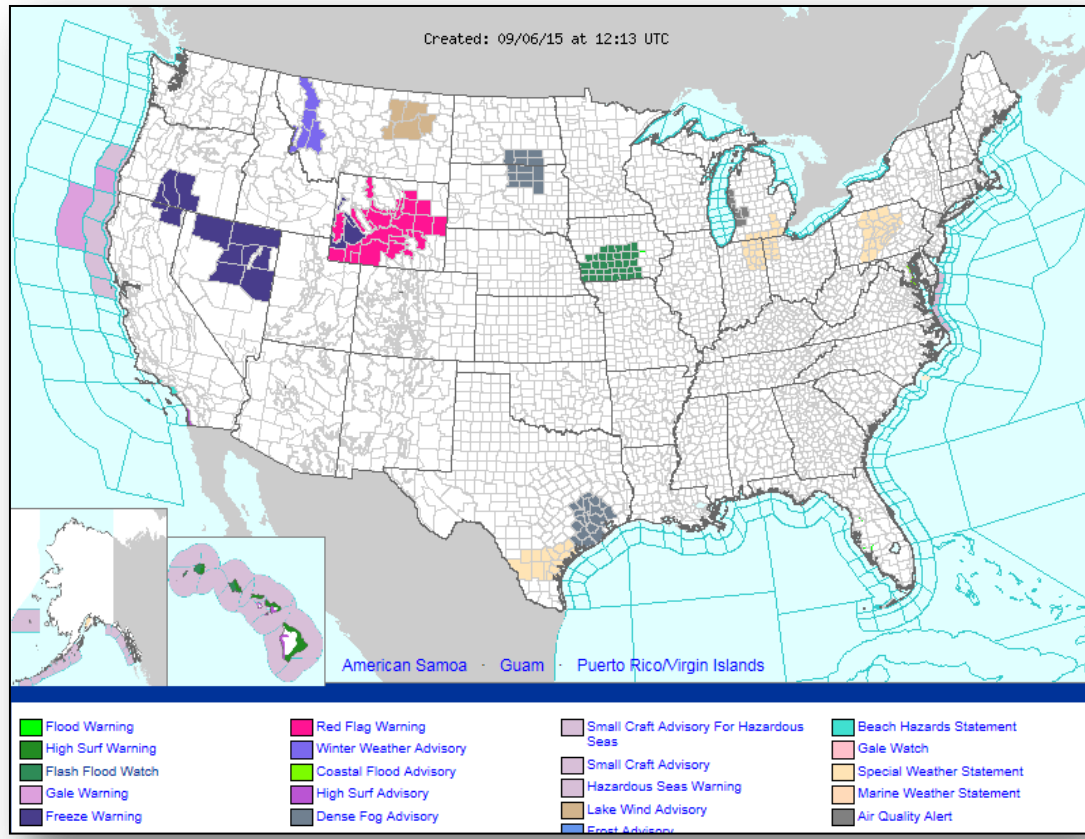


*Today*



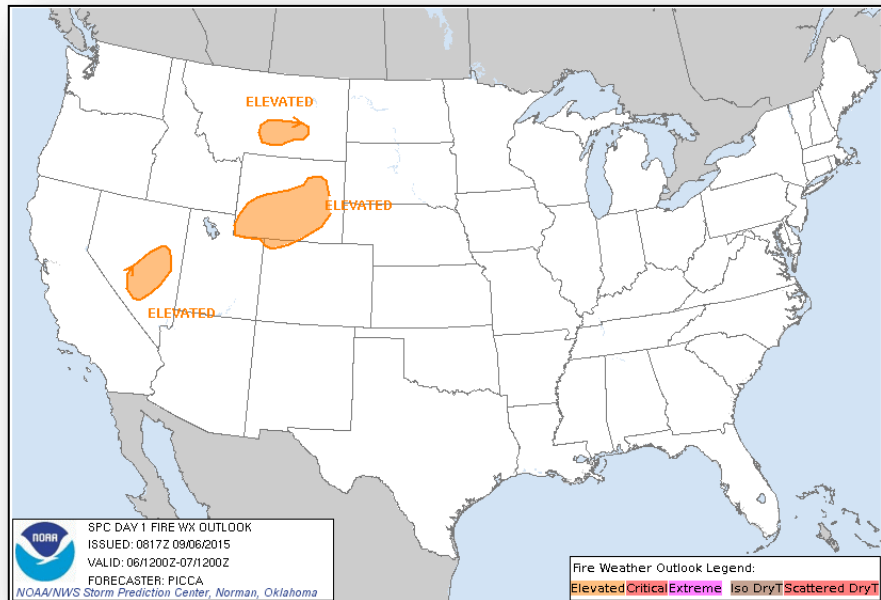
*Tomorrow*

# Active Watches/Warnings

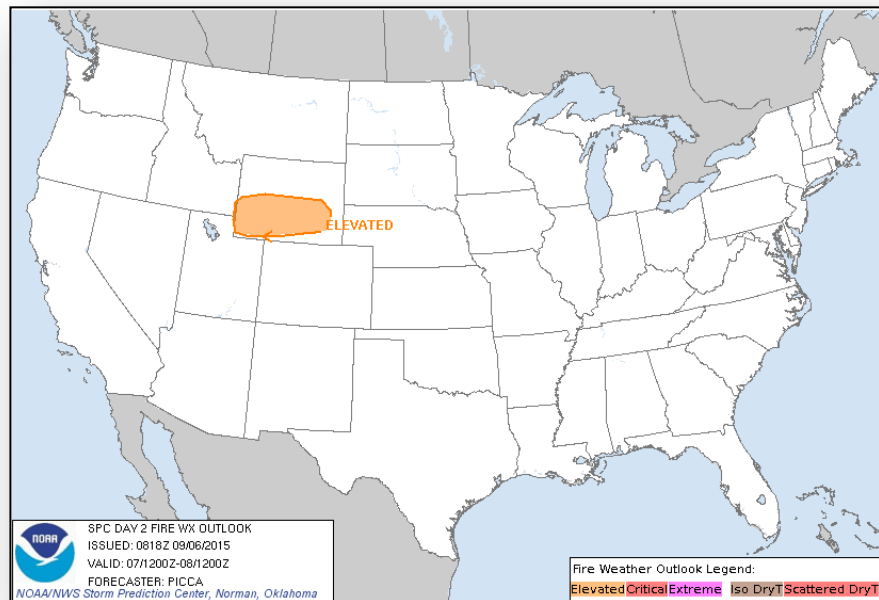




# Fire Weather Outlook, Days 1 – 2

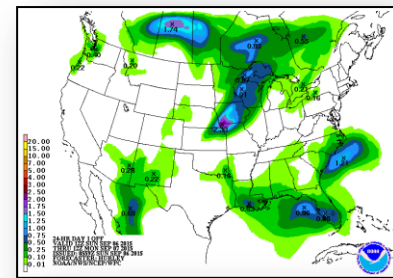
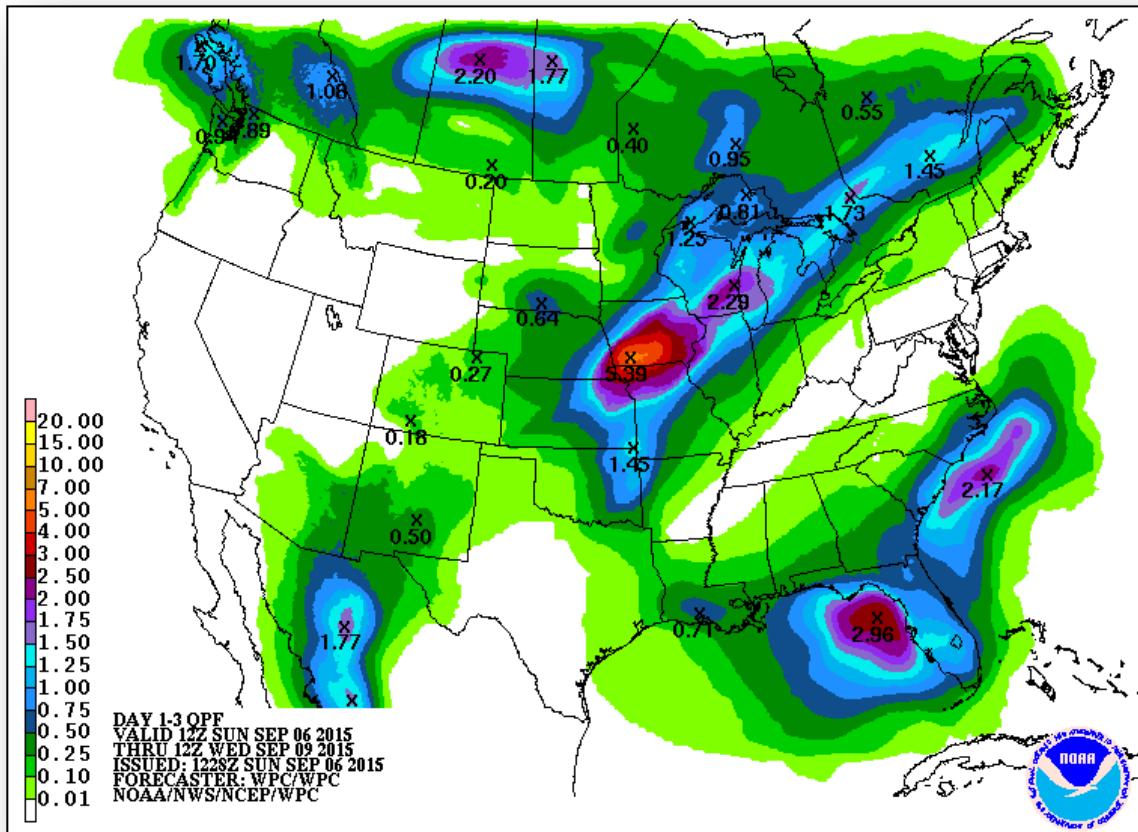


**Today**

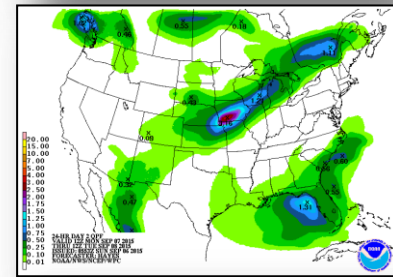


**Tomorrow**

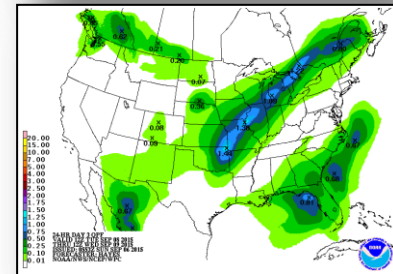
# Precipitation Forecast, 1 – 3 Day



Day 1

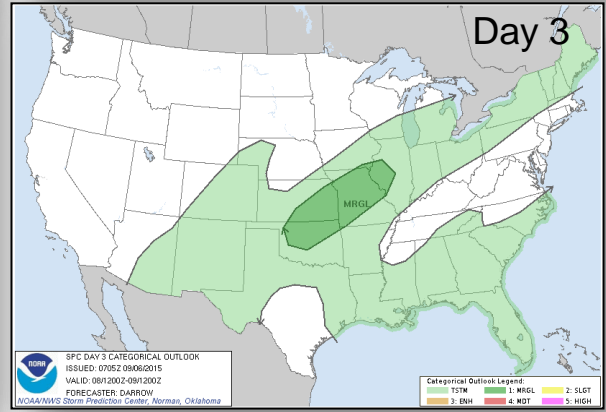
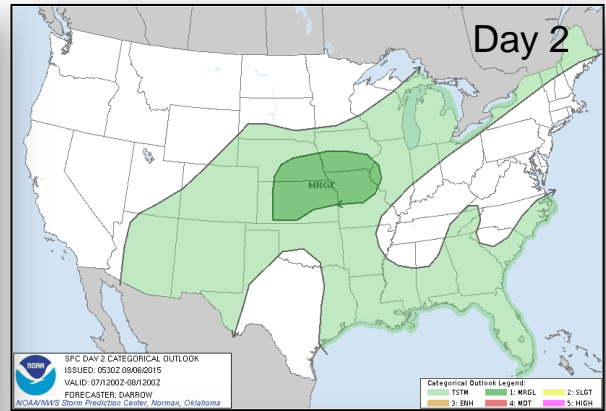
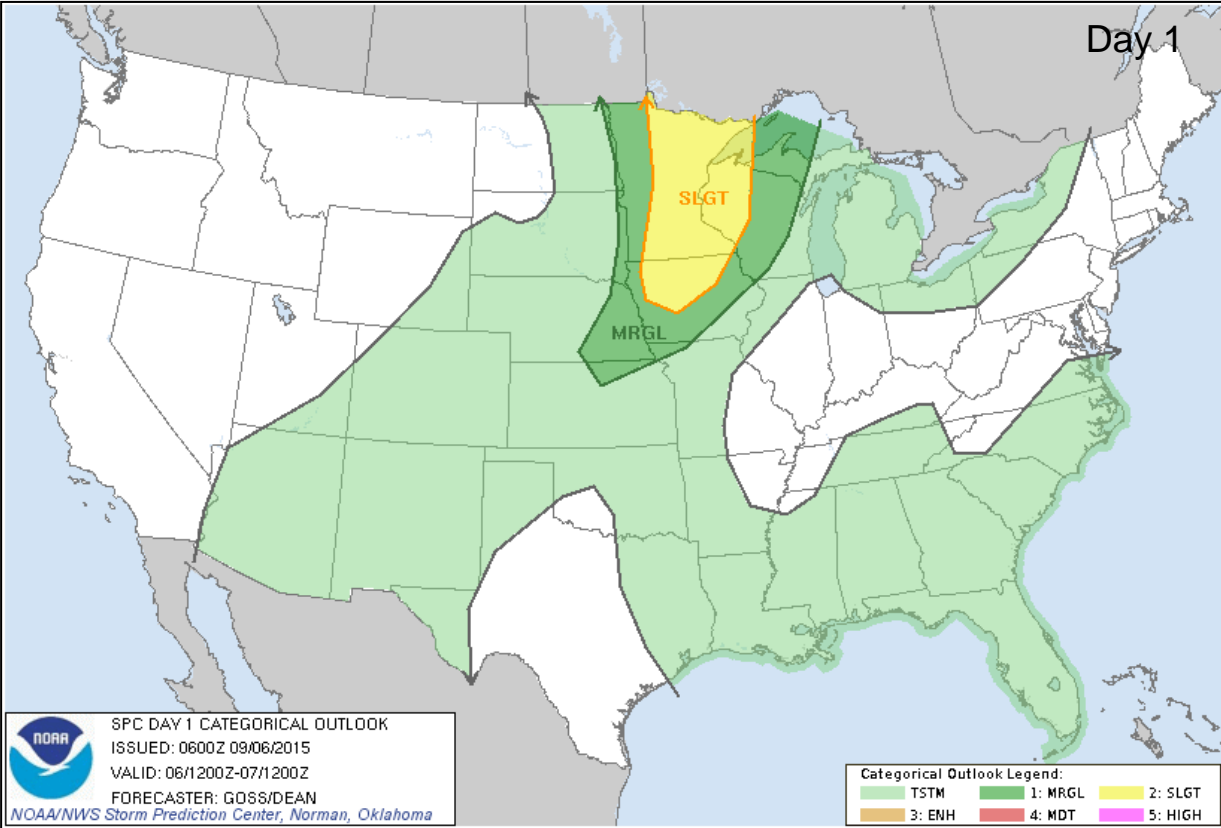


Day 2

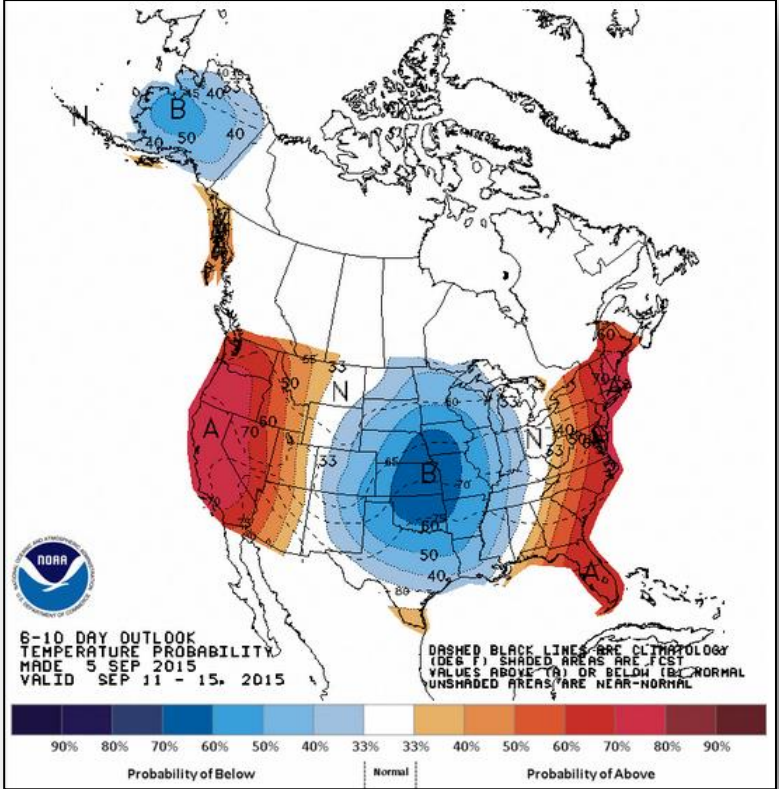


Day 3

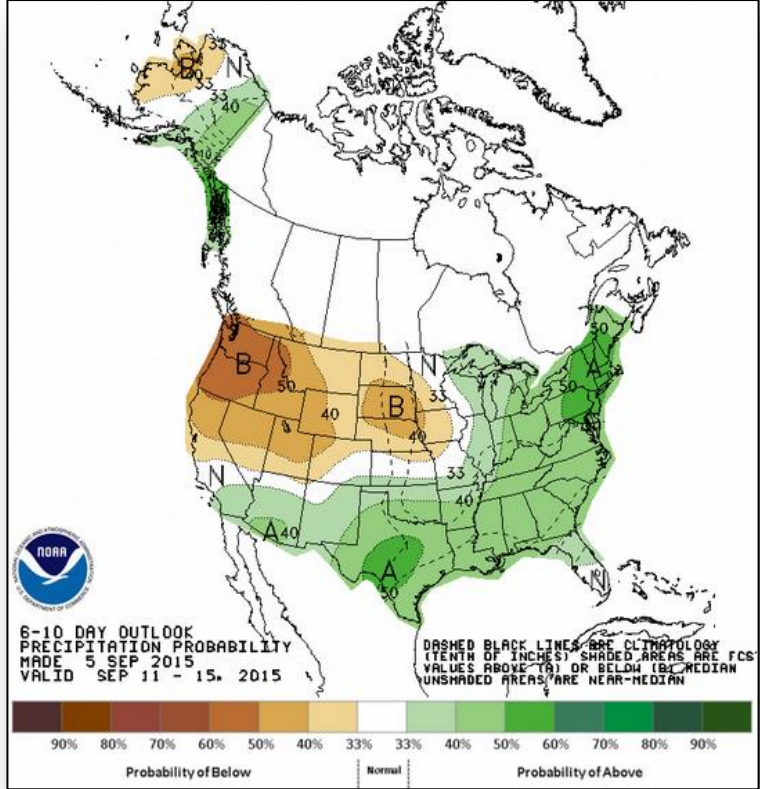
# Severe Weather Outlook, Days 1 – 3



# 6-10 Day Outlooks



**Temperature Probability**

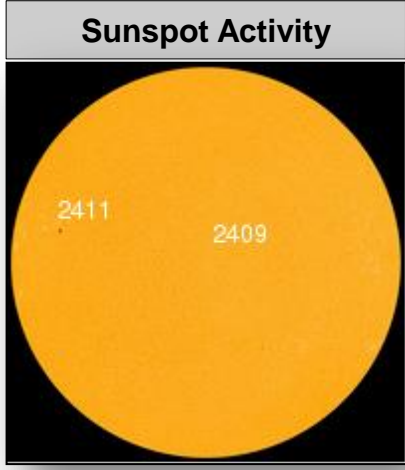
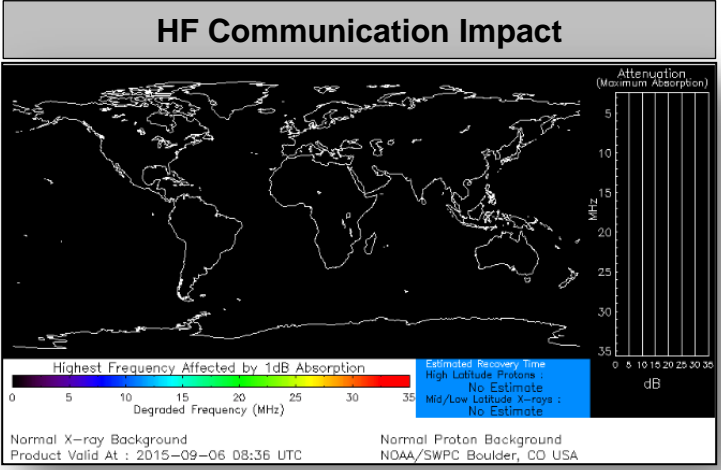


**Precipitation Probability**

# Space Weather



	Past 24 Hours	Current	Next 24 Hours
Space Weather Activity:	None	None	None
• Geomagnetic Storms	None	None	None
• Solar Radiation Storms	None	None	None
• Radio Blackouts	None	None	None



# FEMA Readiness – Deployable Teams /Assets



Deployable Teams/Assets									
Resource	Status	Total	FMC Available		Partially Available	Not Available	Detailed, Deployed, Activated	Comments	Rating Criterion
FCO	Yellow	35	9	26%	0	1	25		OFDC Readiness: FCO Green Yellow Red Type 1 3+ 2 1 Type 2 4+ 3 2 Type 3 4 3 2  FDRC 3 2 1
FDRC	Green	9	5	56%	0	0	4		
US&R	Green	28	27	96%	0	1	0	NM-TF1 (Red) – Personnel shortages	<ul style="list-style-type: none"> <li>• Green = Available/FMC</li> <li>• Yellow = Available/PMC</li> <li>• Red = Out-of-Service</li> <li>• Blue = Assigned/Deployed</li> </ul>
National IMAT	Green	3	3	100%	0	0	0		<ul style="list-style-type: none"> <li>• Green: 3 avail</li> <li>• Yellow: 1-2 avail</li> <li>• Red: 0 avail (<i>Individual N-IMAT red if 50% of Section Chiefs and/or Team Leader is unavailable for deployment.</i>)</li> </ul>
Regional IMAT	Green	13	7	53%	0	0	6	<u>Deployed:</u> RIV (Team 1) deployed to KY RVI (Team 2) deployed to TX RVII deployed to MO RVIII (Team 1) deployed to SD & CO RIX (Teams 1 & 2) deployed to CNMI	<ul style="list-style-type: none"> <li>• Green: 7 or more avail</li> <li>• Yellow: 4 - 6 teams available</li> <li>• Red: &gt; 8 teams deployed/unavailable</li> </ul> R-IMAT also red if TL Ops/Log Chief is unavailable & has no qualified replacement
MCOV	Green	59	48	81%	0	11	0		<ul style="list-style-type: none"> <li>• Green = 80 – 100% avail</li> <li>• Yellow = 60 – 79% avail</li> <li>• Red = 59% or below avail</li> <li>• Readiness remains 95%</li> </ul>

# FEMA Readiness – National/Regional Teams



National/Regional Teams									
Resource	Status	Total	FMC Available		Partially Available	Not Available	Status	Comments	Rating Criterion
NWC		5	5	100%	0	0	24/7		<ul style="list-style-type: none"> <li>• Green = FMC</li> <li>• Yellow = PMC</li> <li>• Red = NMC</li> </ul>
NRCC		2	344	89%	0	44	Not Activated		
HLT		1	N/A	N/A	0	0	Activated		
DEST							Not Activated		
RRCCs		10	10	100%	0	0	Not Activated		
RWCs/MOCs		10	10	100%	0	0	Not Activated		



# FEMA

**FEMA's mission is to support our citizens and first responders to ensure that as a nation we work together to build, sustain, and improve our capability to prepare for, protect against, respond to, recover from, and mitigate all hazards.**