

The Disaster Center is dedicated to the idea that disaster mitigation is cost effective and individuals pursuing their own interest are the greatest potential force for disaster reduction.

Please consider making a small donation to the Disaster Center



When disaster mitigation is cost effective, we are on the road to bringing disasters to an end.



FEMA

Daily Operations Briefing

Monday, September 7, 2015

8:30 a.m. EDT

Significant Activity: Sep 6-7



Significant Events: None

Tropical Activity:

- Atlantic: Tropical Storm Grace
- Eastern Pacific: Hurricane Linda (CAT-1)
- Central Pacific: Tropical Storm Jimena
- Western Pacific: No significant activity affecting U.S. territories

Significant Weather:

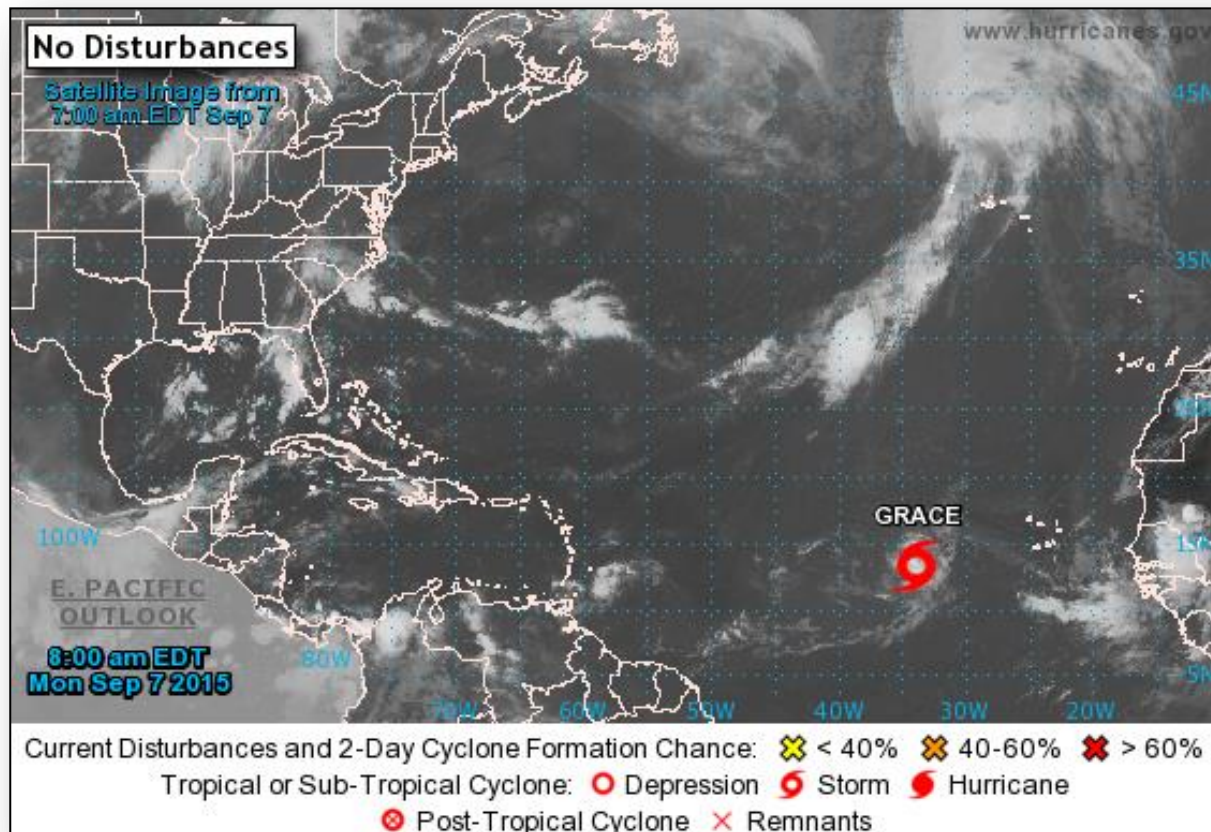
- Flash flooding – Central Plains to Great Lakes
- Rain/thunderstorms – Northwest to Northern Rockies, Southwest & Southern Plains to Great Lakes & Northeast, Southern Plains to Southeast
- Red Flag Warnings – WY
- Critical/Elevated Fire Weather area – WY
- Space weather: Past 24 hours – None; next 24 hours – none

Declaration Activity: None

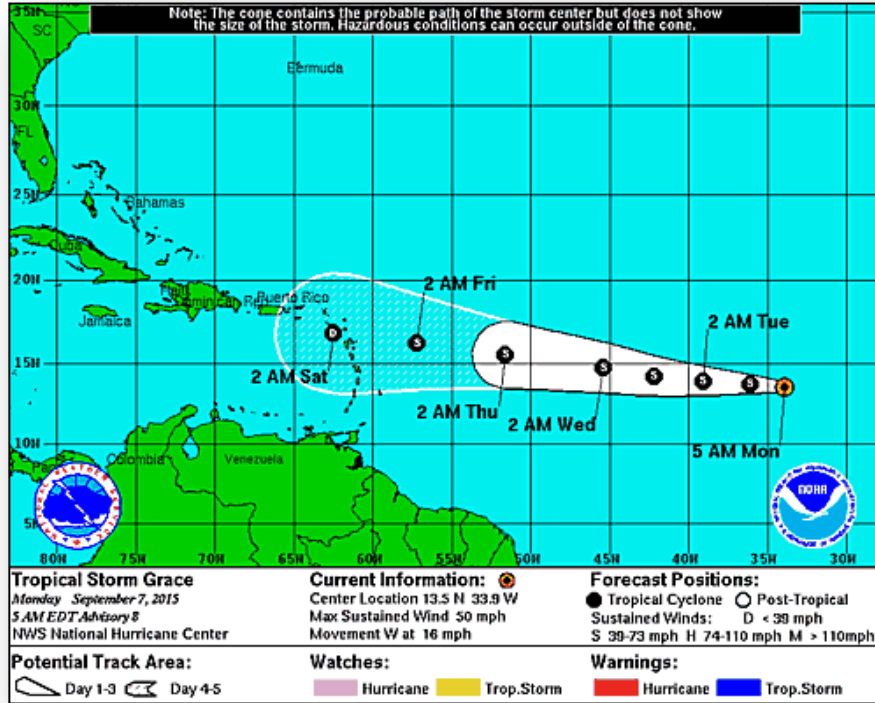
2 – Day Tropical Outlook – Atlantic



FEMA



Atlantic – Tropical Storm Grace



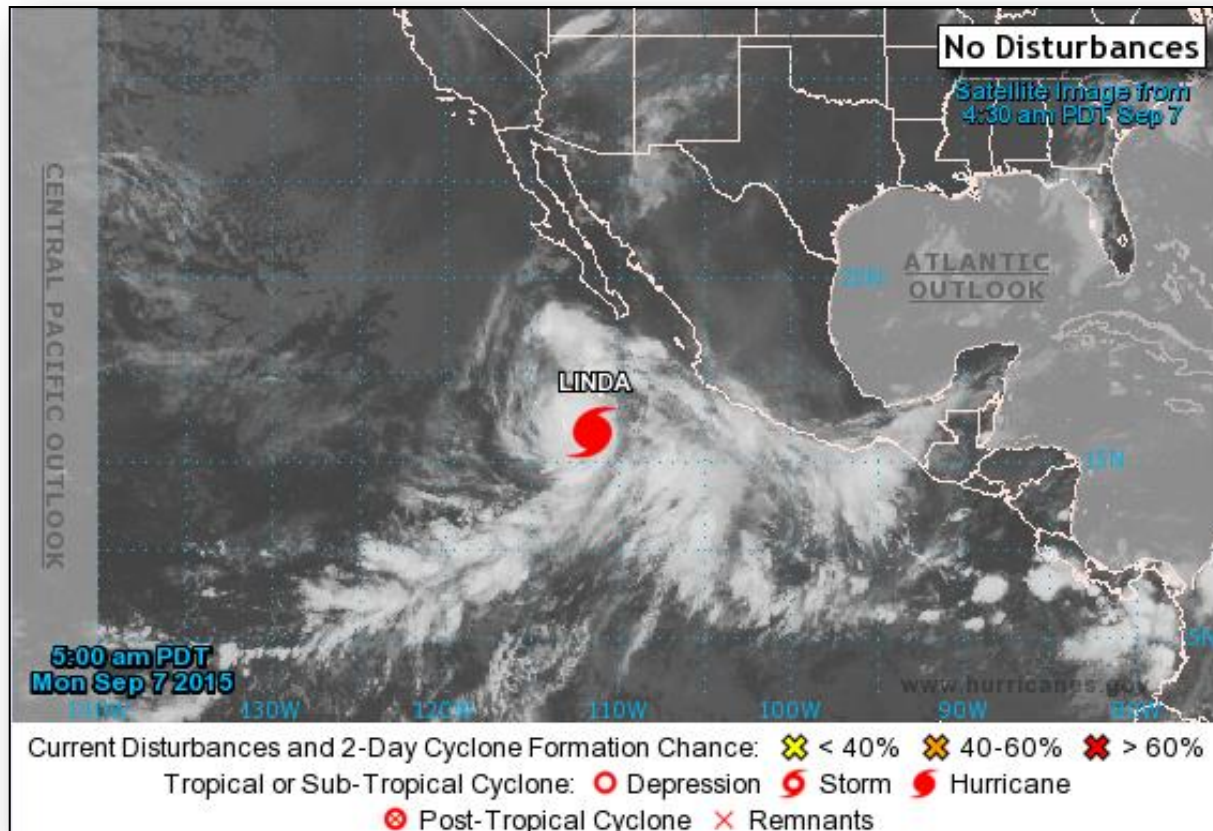
Advisory #8 : (As of 5:00 a.m. EDT)

- Located 685 miles WSW of the Cape Verde Islands
- Moving W near 16 mph; general motion expected to continue for next couple days
- Maximum sustained winds near 50 mph; little change in strength forecast during next day or so, followed by gradual weakening
- Tropical storm-force winds extend outward up to 60 miles

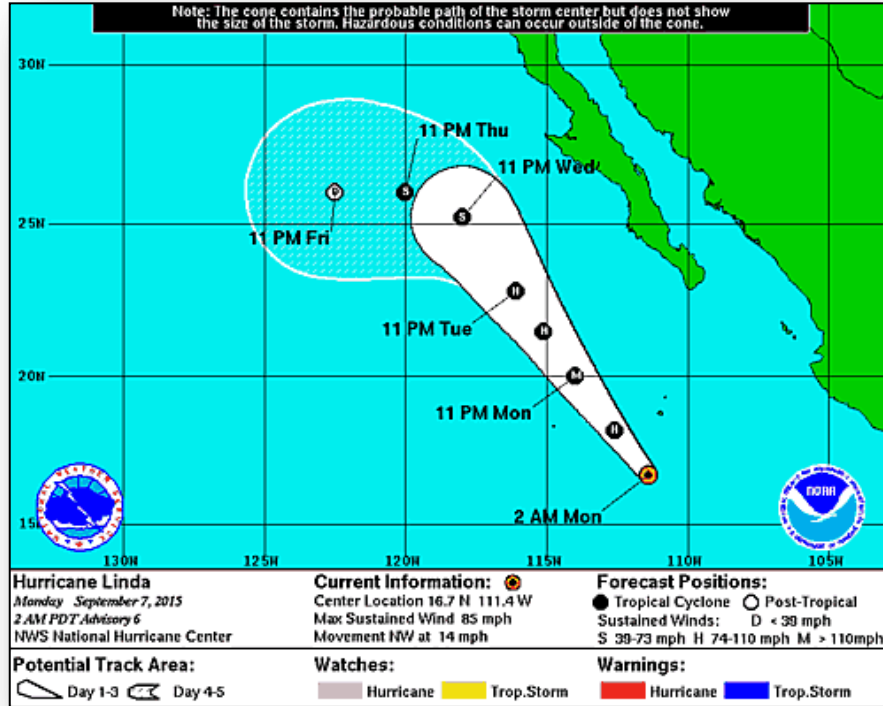
2 – Day Tropical Outlook – Eastern Pacific



FEMA



Eastern Pacific – Hurricane Linda



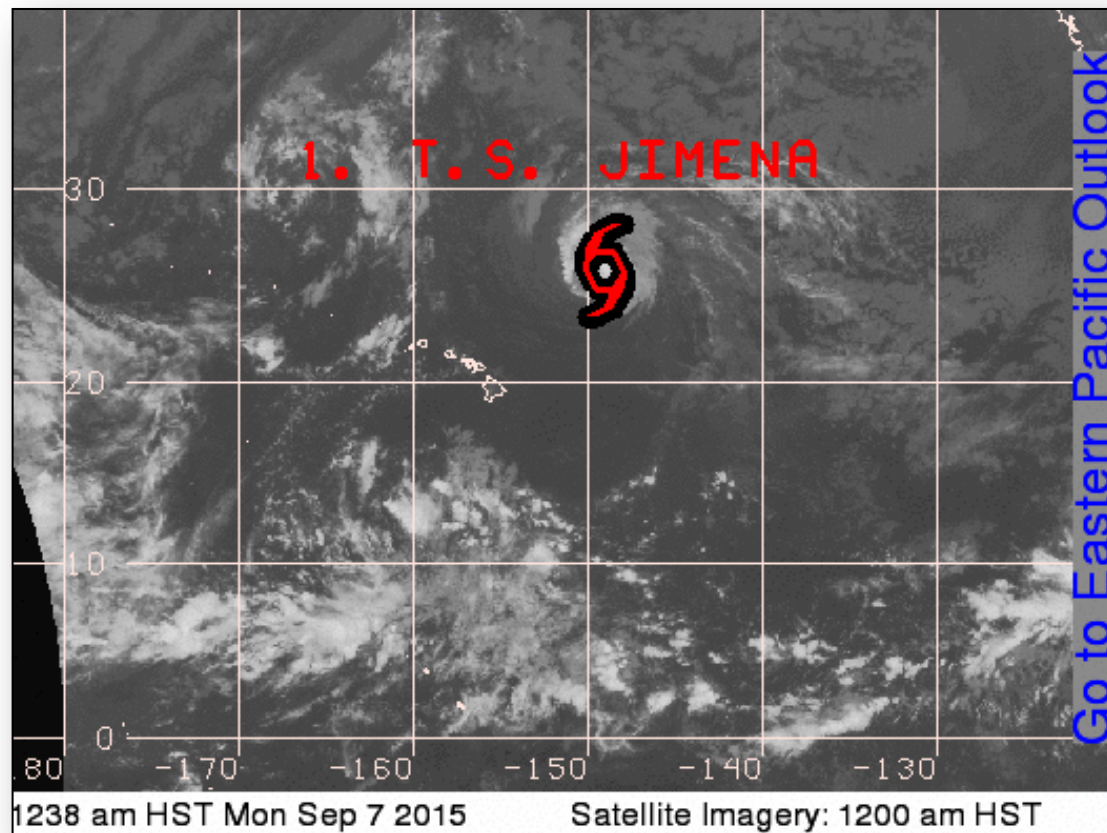
Advisory #6: (as of 5:00 a.m. EDT)

- Located 440 miles SSW of the Southern tip of Baja California
- Moving NW at 14 mph; general motion with decrease in forward speed expected for next couple of days
- Maximum sustained winds near 85 mph (CAT-1)
- Additional strengthening is forecast; Linda could become a major hurricane on Monday

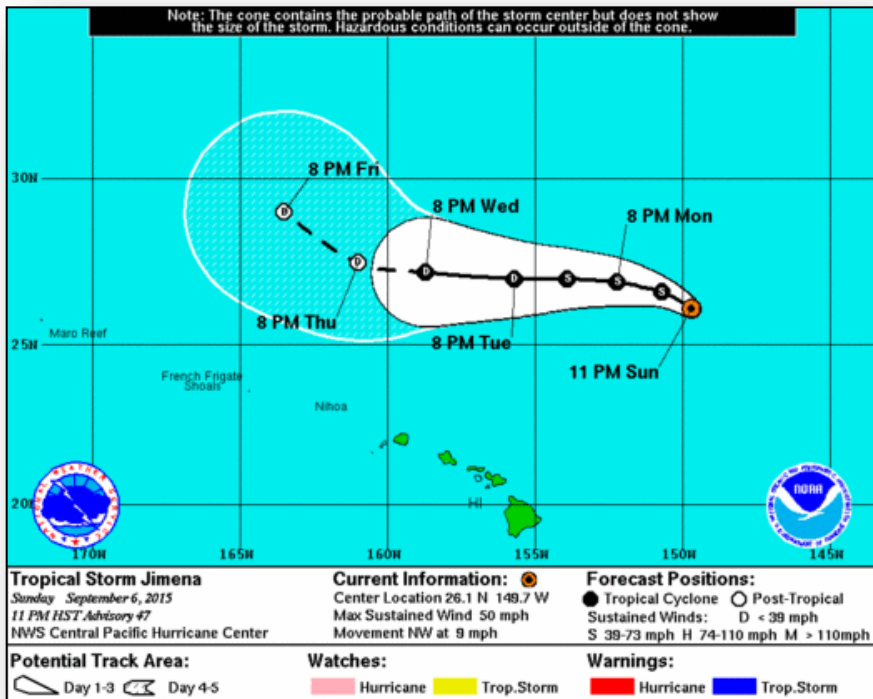
2 – Day Tropical Outlook – Central Pacific



FEMA



Central Pacific – Tropical Storm Jimena



Advisory #47: (as of 5:00 a.m. EDT)

- Located 615 miles NE of Honolulu, HI
- Moving NW near 9 mph; a gradual turn to W through Tuesday
- Maximum sustained winds near 50 mph; gradual weakening expected for next couple days
- Forecast to become a major hurricane tonight; weakening expected to begin Tuesday
- Tropical storm-force winds extend 205 miles
- High Surf Warnings/Advisories & Small Craft Advisories are in effect throughout the Hawaiian Islands

Wildfire Summary



Fire Name (County)	FMAG #	Acres burned	% Contained	Evacuations (Residents)	Structures Threatened	Structures Damaged/ Destroyed	Fatalities/ Injuries
Washington (2)							
Kettle Complex (Ferry County)	FEMA-5101-FM-WA <i>Approved Aug 14</i> FEMA-5108-FM-WA <i>Approved Aug 21</i>	76,780 (-84)	44% (+1)	Voluntary	4,569 (2,894 homes)	0/2 (1 home)	0/4 (+1)
North Star Complex (Okanogan County)	No FMAG Requested	209,504 (+1,359)	37% (+7)	Mandatory/ Voluntary 2,337	3,065 (-860) (2,340 homes)	0/1	0/0
Oregon (1)							
Grizzly Bear Complex (Wallowa County)	FEMA-5107-FM-OR <i>Approved Aug 21</i>	75,268 (+559)	37% (+7)	None	75 (45 homes)	0/33 (5 homes)	0/6
Idaho (1)							
TePee Springs Fire (Idaho County)	FEMA-5110-FM-ID <i>Approved Aug 29</i>	94,655 (+1,553)	60% (+10)	Mandatory/ Voluntary (Unknown)	8,000 (-200) (400 homes)	0/2	0/2

Disaster Requests & Declarations



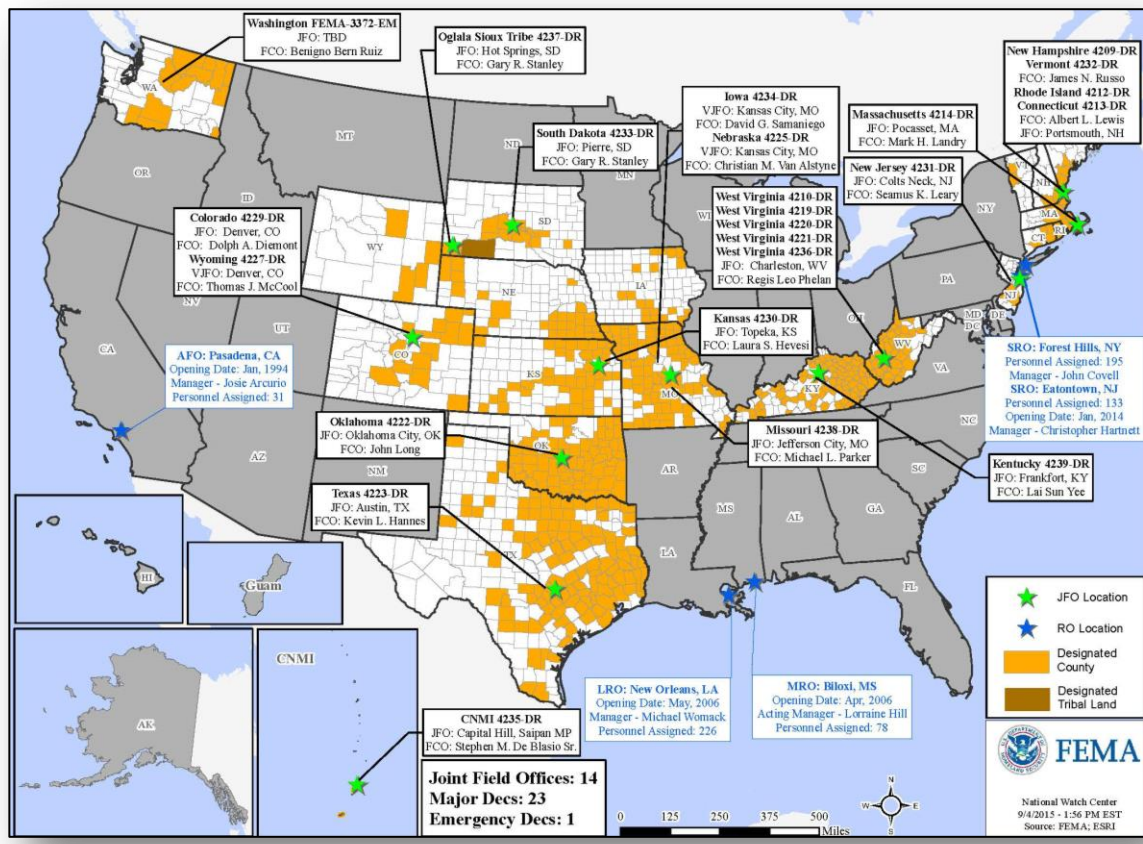
Declaration Requests in Process		Requests APPROVED (since last report)	Requests DENIED (since last report)
1	Date Requested	0	0
IN – DR Severe Storms, Tornadoes, Straight-line Winds, and Flooding	August 31, 2015		

Disaster Amendments



Amendment	Effective Date	Action
Amendment No. 2 to FEMA-4228-DR-LA	September 4, 2015	Adds West Feliciana Parish for Public Assistance

Open Field Offices as of September 7

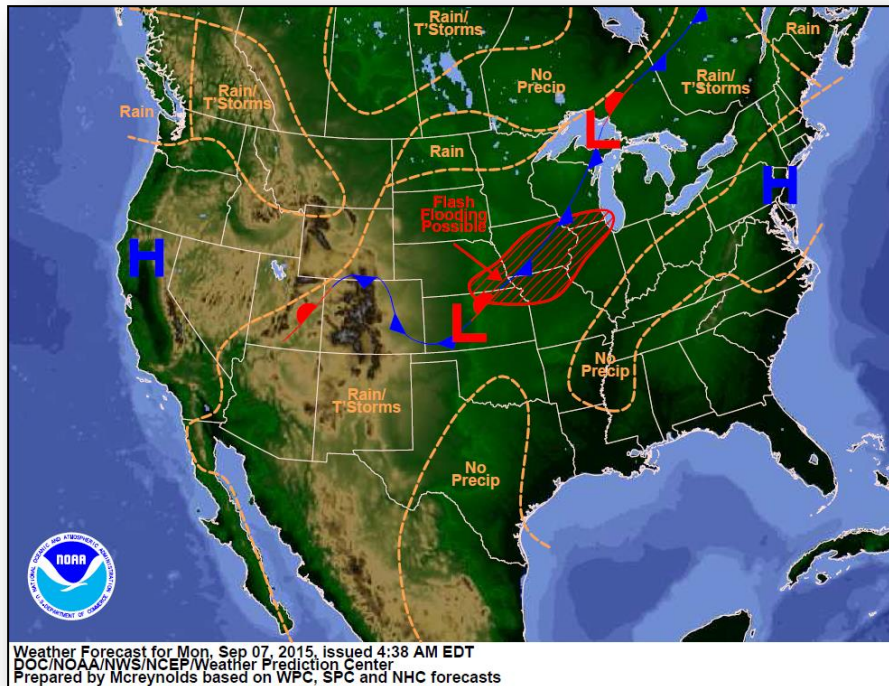


Joint Preliminary Damage Assessments

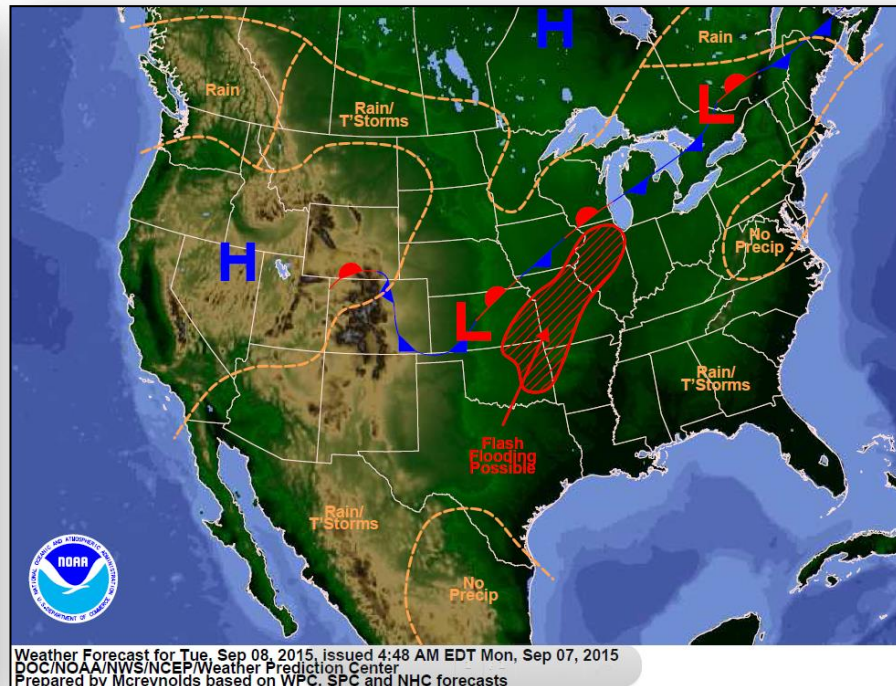


Region	State / Location	Event	IA/PA	Number of Counties		Start – End
				Requested	Complete	
VIII	CO	Severe Storms & Flooding April – June, 2015	IA	1	1	9/3 – 9/3
X	WA	Wildfires June 29, 2015 & ongoing	IA	5	0	9/14 – TBD
			PA	5	0	9/14 – TBD
X	Colville Reservation (WA)	Wildfires June 29, 2015 & ongoing	IA	1	0	9/14 – TBD
			PA	1	0	9/14 – TBD

National Weather Forecast



Today

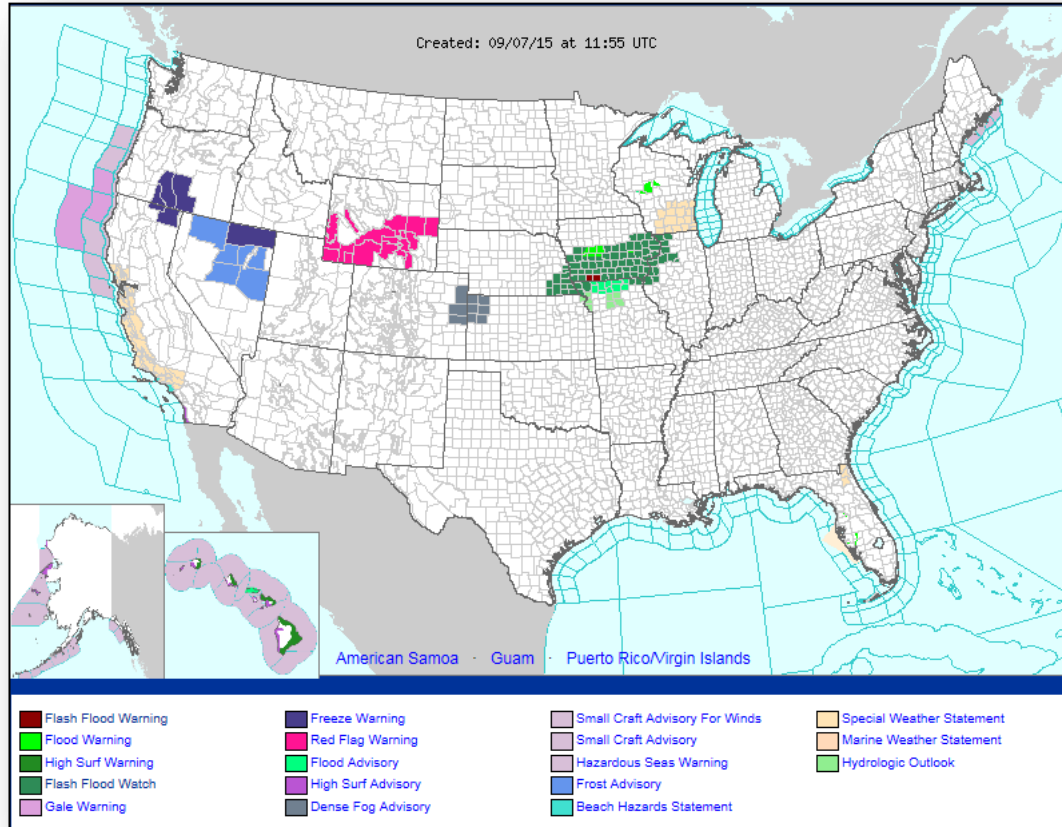


Tomorrow

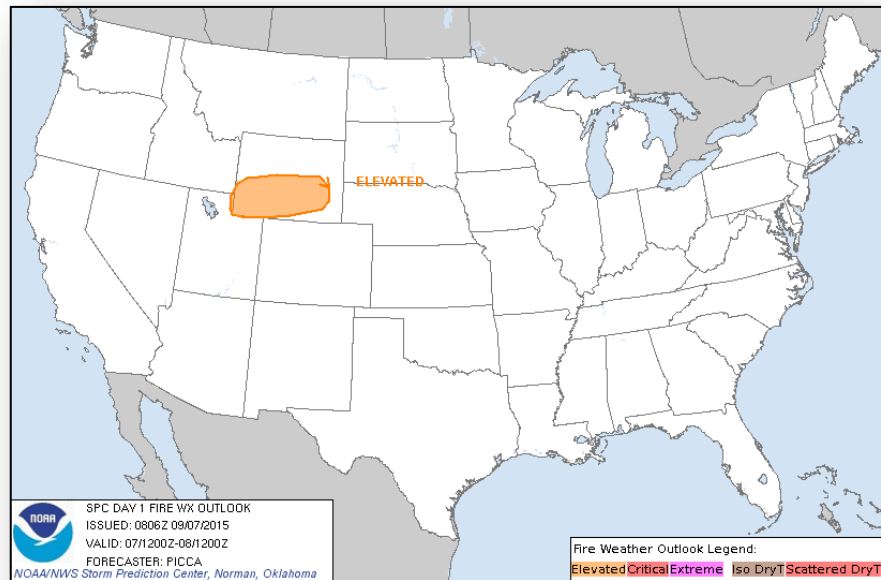
Active Watches/Warnings



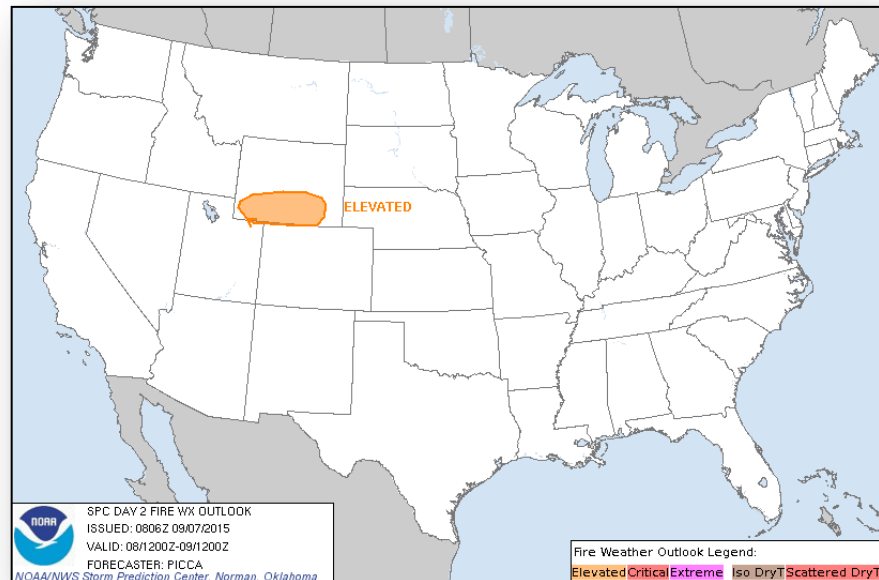
FEMA



Fire Weather Outlook, Days 1 – 2

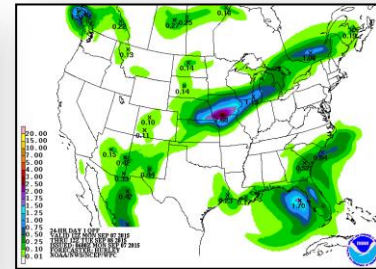
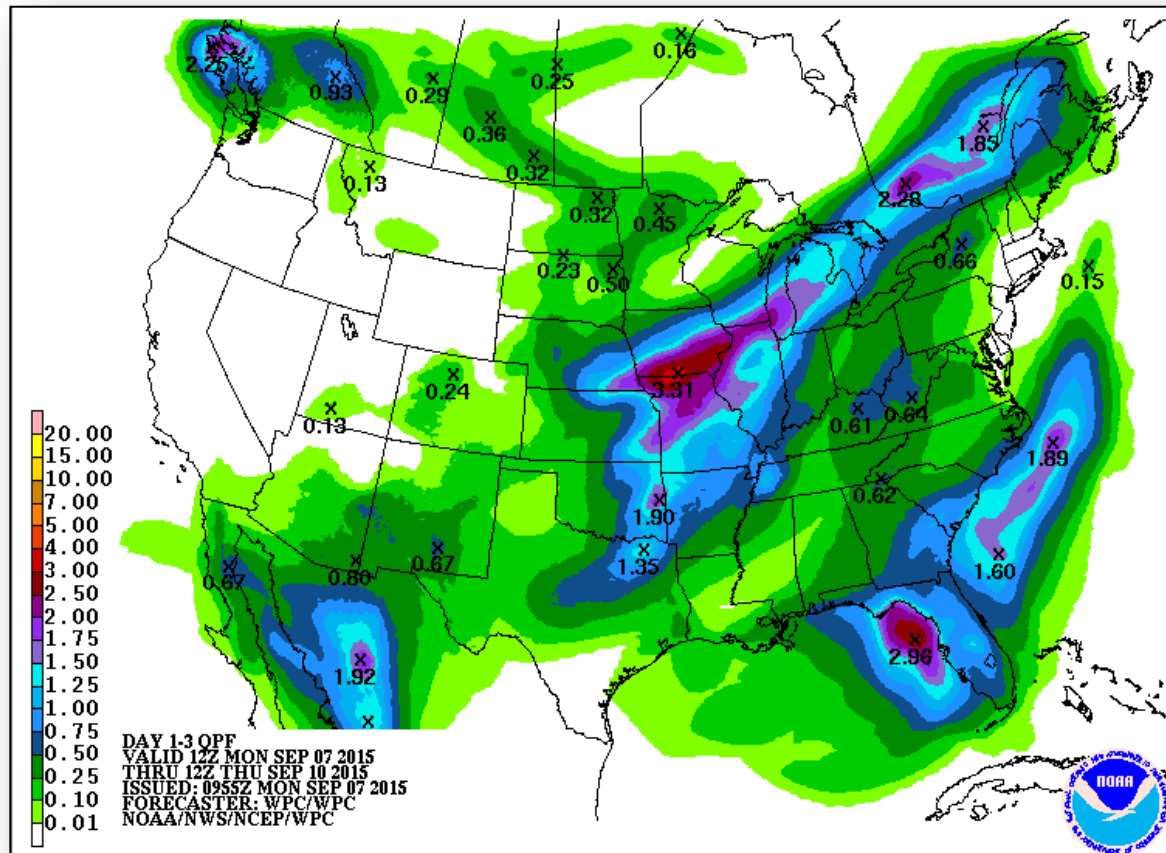


Today

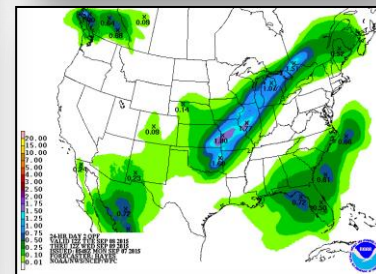


Tomorrow

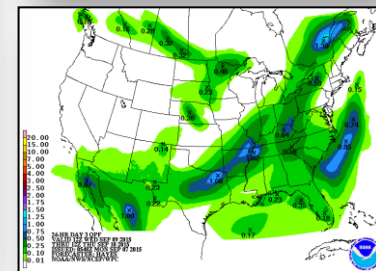
Precipitation Forecast, 1 – 3 Day



Day 1

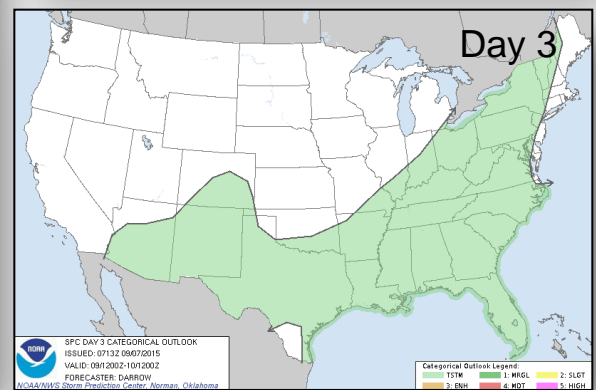
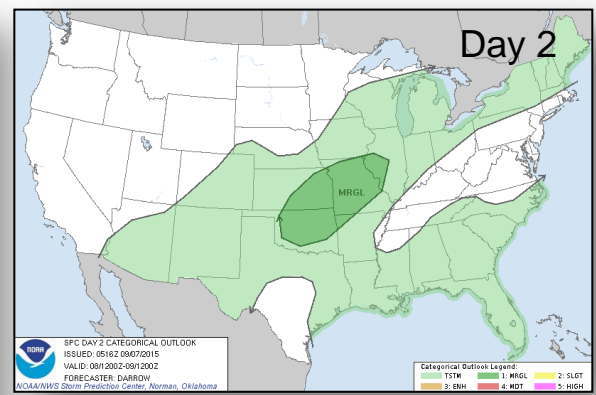
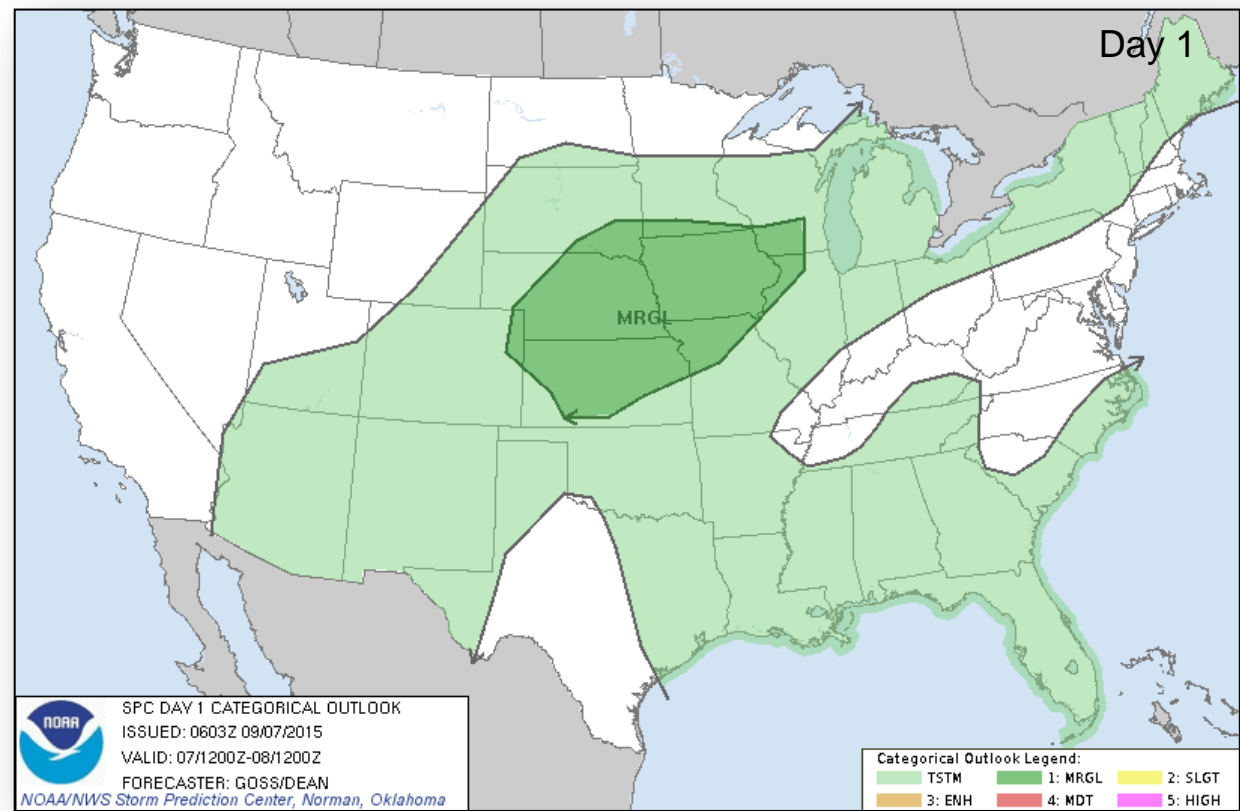


Day 2



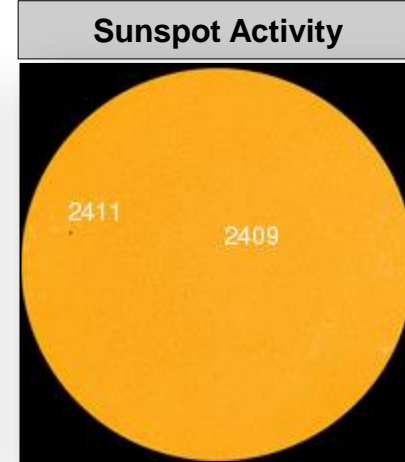
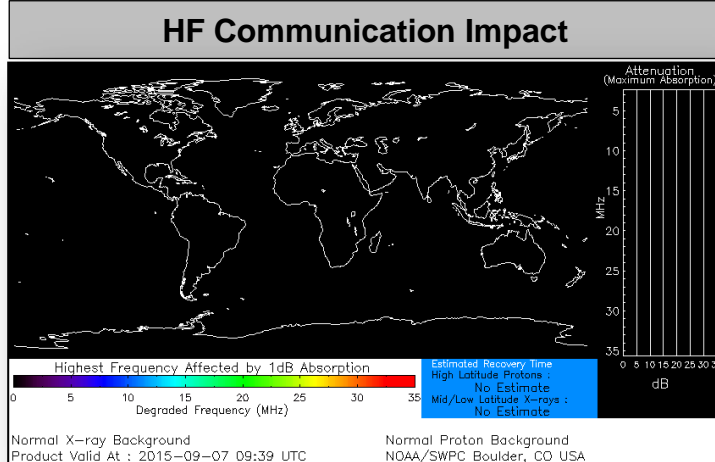
Day 3

Severe Weather Outlook, Days 1 – 3



Space Weather

	Past 24 Hours	Current	Next 24 Hours
Space Weather Activity:	None	None	None
• Geomagnetic Storms	None	None	None
• Solar Radiation Storms	None	None	None
• Radio Blackouts	None	None	None



FEMA Readiness – Deployable Teams /Assets



Deployable Teams/Assets									
Resource	Status	Total	FMC Available		Partially Available	Not Available	Detailed, Deployed, Activated	Comments	Rating Criterion
FCO		35	9	26%	0	1	25		OFDC Readiness: FCO Green Yellow Red Type 1 3+ 2 1 Type 2 4+ 3 2 Type 3 4 3 2 FDRC 3 2 1
FDRC		9	5	56%	0	0	4		
US&R		28	27	96%	0	1	0	NM-TF1 (Red) – Personnel shortages	<ul style="list-style-type: none"> • Green = Available/FMC • Yellow = Available/PMC • Red = Out-of-Service • Blue = Assigned/Deployed
National IMAT		3	3	100%	0	0	0		<ul style="list-style-type: none"> • Green: 3 avail • Yellow: 1-2 avail • Red: 0 avail (<i>Individual N-IMAT red if 50% of Section Chiefs and/or Team Leader is unavailable for deployment.</i>)
Regional IMAT		13	7	53%	0	0	6	<u>Deployed:</u> RIV (Team 1) deployed to KY RVI (Team 2) deployed to TX RVII deployed to MO RVIII (Team 1) deployed to SD & CO RIX (Teams 1 & 2) deployed to CNMI	<ul style="list-style-type: none"> • Green: 7 or more avail • Yellow: 4 - 6 teams available • Red: > 8 teams deployed/unavailable <i>R-IMAT also red if TL Ops/Log Chief is unavailable & has no qualified replacement</i>
MCOV		59	48	81%	0	11	0		<ul style="list-style-type: none"> • Green = 80 – 100% avail • Yellow = 60 – 79% avail • Red = 59% or below avail • Readiness remains 95%

FEMA Readiness – National/Regional Teams



National/Regional Teams									
Resource	Status	Total	FMC Available		Partially Available	Not Available	Status	Comments	Rating Criterion
NWC		5	5	100%	0	0	24/7		• Green = FMC • Yellow = PMC • Red = NMC
NRCC		2	344	89%	0	44	Not Activated		
HLT		1	N/A	N/A	0	0	Activated		
DEST							Not Activated		
RRCCs		10	10	100%	0	0	Not Activated		
RWCs/MOCs		10	10	100%	0	0	Not Activated		



FEMA

FEMA's mission is to support our citizens and first responders to ensure that as a nation we work together to build, sustain, and improve our capability to prepare for, protect against, respond to, recover from, and mitigate all hazards.