

The Disaster Center is dedicated to the idea that disaster mitigation is cost effective and individuals pursuing their own interest are the greatest potential force for disaster reduction.

Please consider making a small donation to the Disaster Center



When disaster mitigation is cost effective, we are on the road to bringing disasters to an end.



# **FEMA**

## **Daily Operations Briefing**

**Wednesday, September 9, 2015**

**8:30 a.m. EDT**

# Significant Activity: Sep 8-9



**Significant Events:** None

**Tropical Activity:**

- Atlantic: Tropical Depression Grace; Tropical Depression Eight
- Eastern Pacific: Hurricane Linda (CAT-2); Disturbance 1 (Low-10%)
- Central Pacific: Tropical Storm Jimena
- Western Pacific: No significant activity affecting U.S. territories

**Significant Weather:**

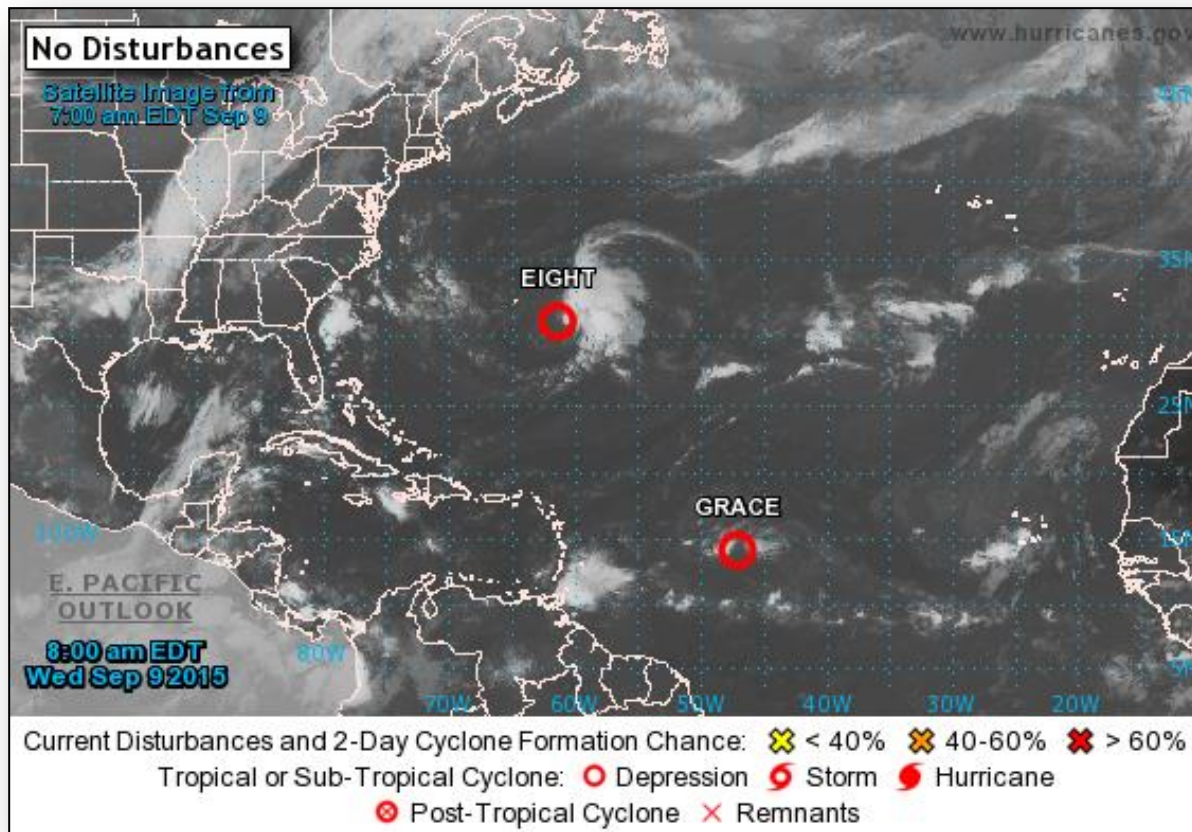
- Rain/thunderstorms – So. California, Southwest to eastern half of U.S.
- Red Flag Warnings – WY
- Elevated Fire Weather area – WY
- Space weather: Past 24 hours – Moderate w/G2 Level occurred; next 24 hours – Moderate w/G2 Level expected

**Declaration Activity:** None

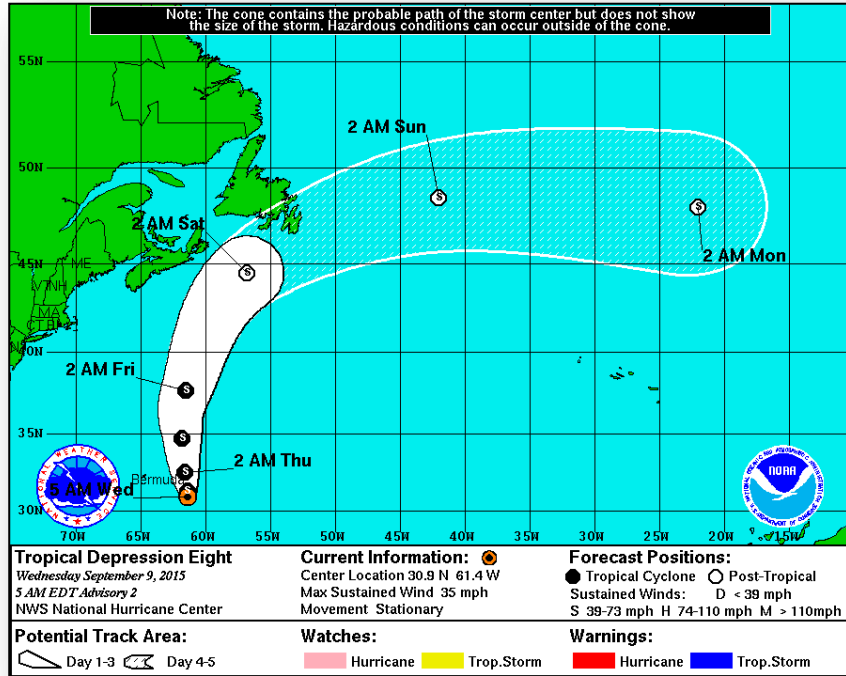
# 2 – Day Tropical Outlook – Atlantic



FEMA



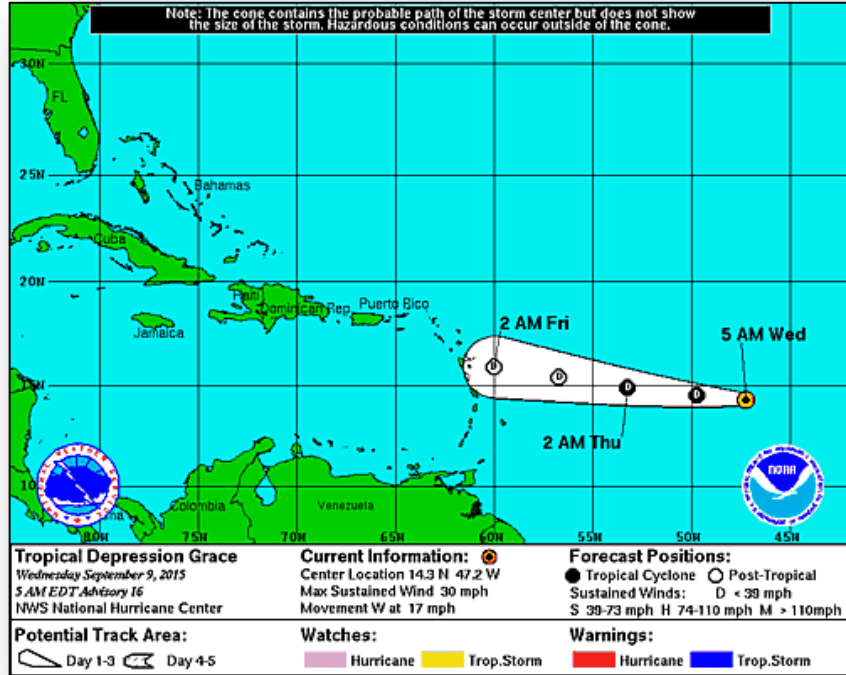
# Atlantic – Tropical Depression Eight



## Advisory #2: (as of 5:00 a.m. EDT)

- Located about 220 miles ESE of Bermuda
- Maximum sustained winds are 35 mph
- Present movement stationary
- Expected to move N later today
- Could become a tropical storm today

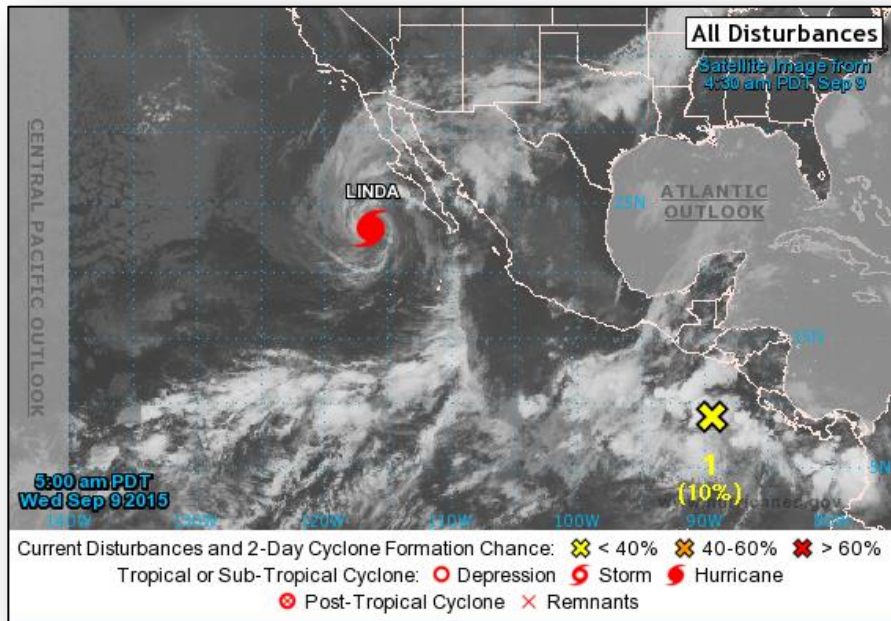
# Atlantic – Tropical Depression Grace



## **Advisory #16 :** (As of 5:00 a.m. EDT)

- Located 945 miles E of the Lesser Antilles
- Moving W near 17 mph; general motion expected to continue
- Maximum sustained winds near 30 mph
- Expected to become a remnant low or an open wave in the next day or two
- No coastal watches and warnings in effect

# 2-Day Tropical Outlook – Eastern Pacific

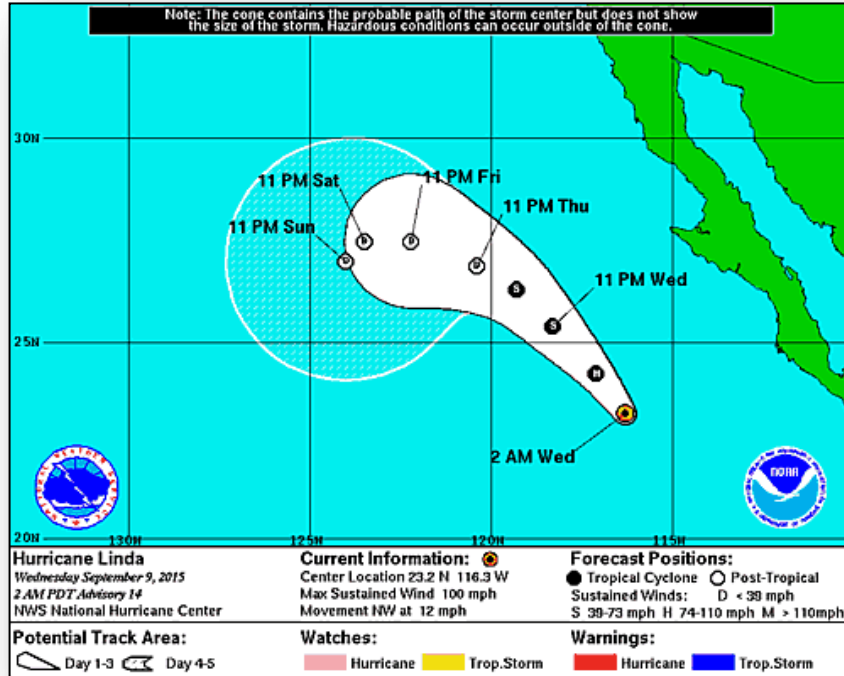


## **Disturbance 1:** *(as of 8:00 a.m. EDT)*

- Disorganized area of showers/thunderstorms
- Located S of the coast of Central America
- Moving WNW at 10 mph
- Low pressure area expected to develop several hundred miles S of Gulf of Tehuantepec this week
- Formation chance through 48 hours: Low (10%)
- Formation chance through 5 days: Medium (50%)



# Eastern Pacific – Hurricane Linda

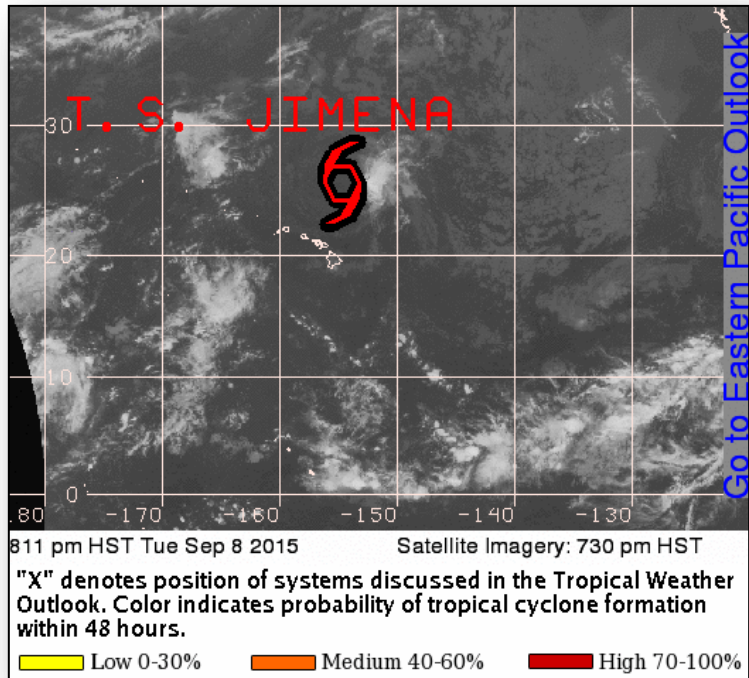


## Advisory #14: (as of 5:00 a.m. EDT)

- Located 405 miles W of the Southern tip of Baja California
- Moving NW at 12 mph
- Maximum sustained winds near 100 mph; Cat 2
- Hurricane-force winds extend 35 miles
- Tropical storm-force winds extend 160 miles
- Rapid weakening is expected during the next 48 hours
- No coastal watches and warnings in effect

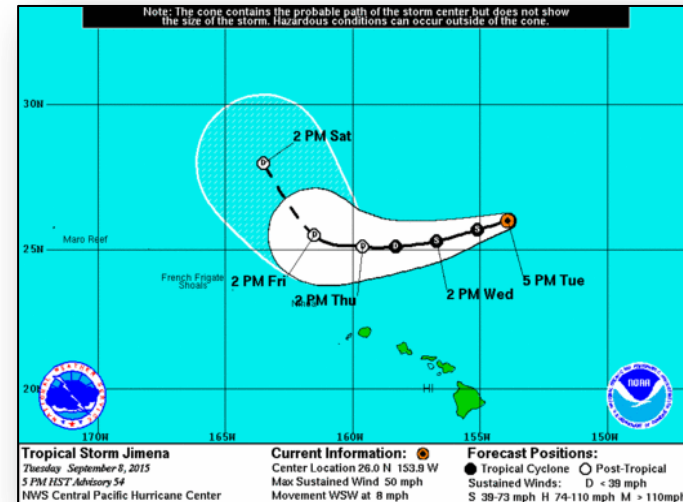


# Central Pacific – Tropical Storm Jimena



## Advisory #54: (as of 11:00 p.m. EDT)

- Located 410 miles NE of Honolulu, HI
- Moving WSW near 8 mph
- Maximum sustained winds near 50 mph
- Slow decrease in strength is forecast for the next couple of days
- Tropical storm-force winds extend 140 miles
- No coastal watches and warnings in effect



# Wildfire Summary

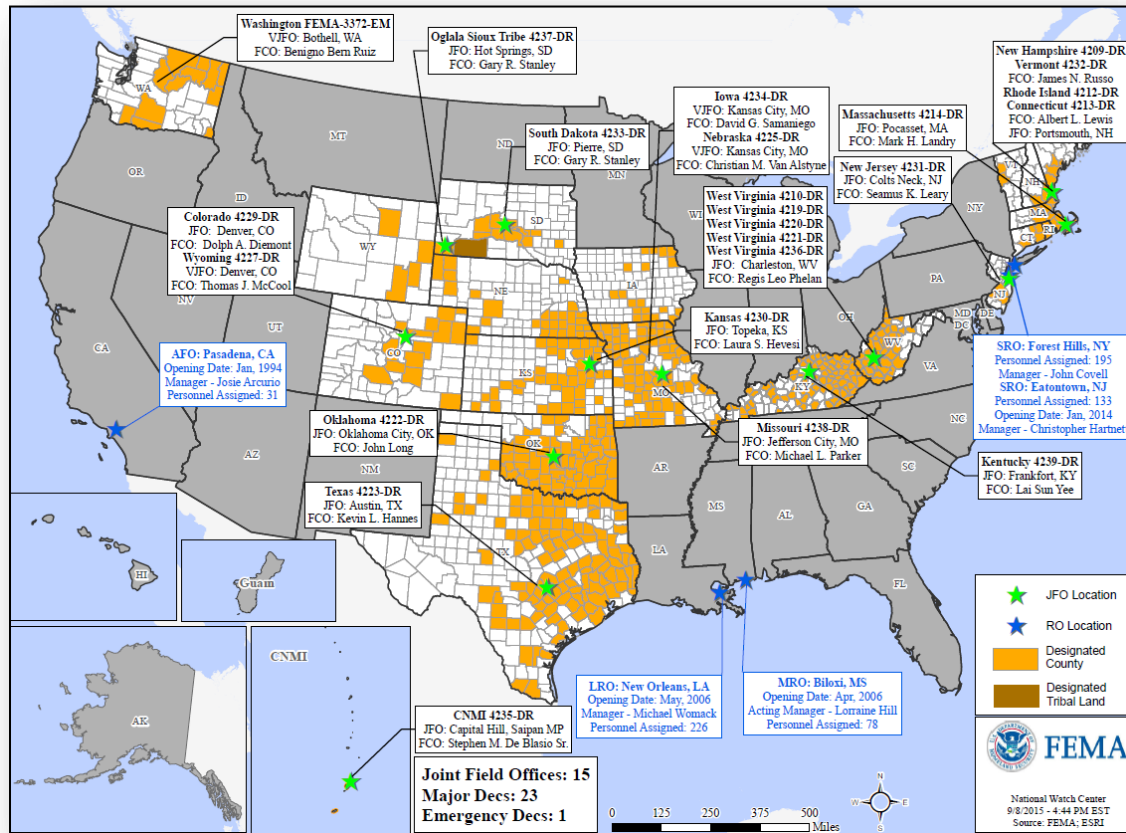


Fire Name (County)	FMAG #	Acres burned	% Contained	Evacuations (Residents)	Structures Threatened	Structures Damaged/ Destroyed	Fatalities/ Injuries
Washington (1)							
North Star Complex (Okanogan County)	No FMAG Requested	210,027 (+990)	40% (+3)	Mandatory/ Voluntary 2,337	3,365 (2,340 homes)	0/1	0/0

# Open Field Offices as of September 9



FEMA

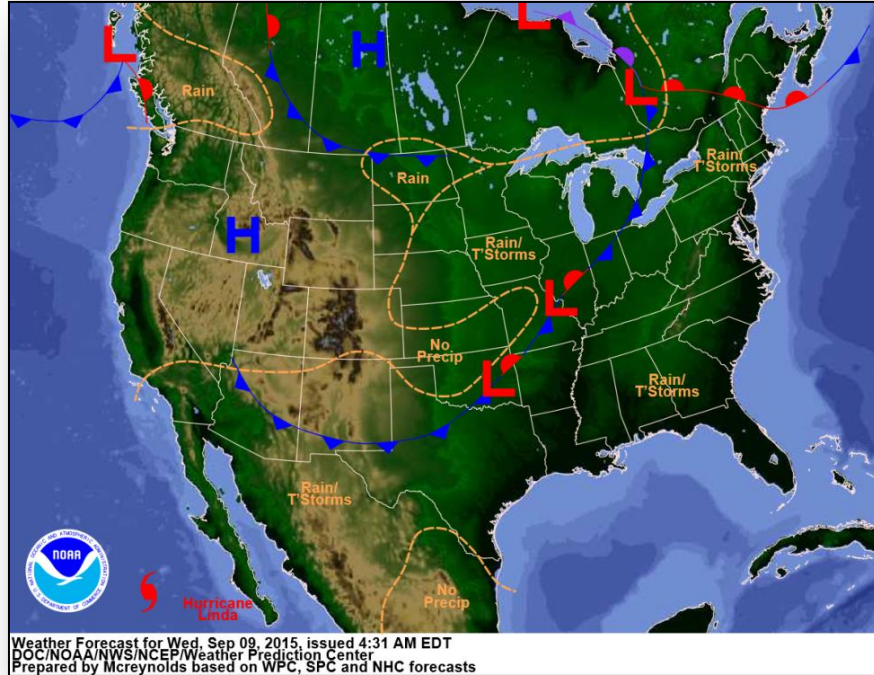


# Joint Preliminary Damage Assessments

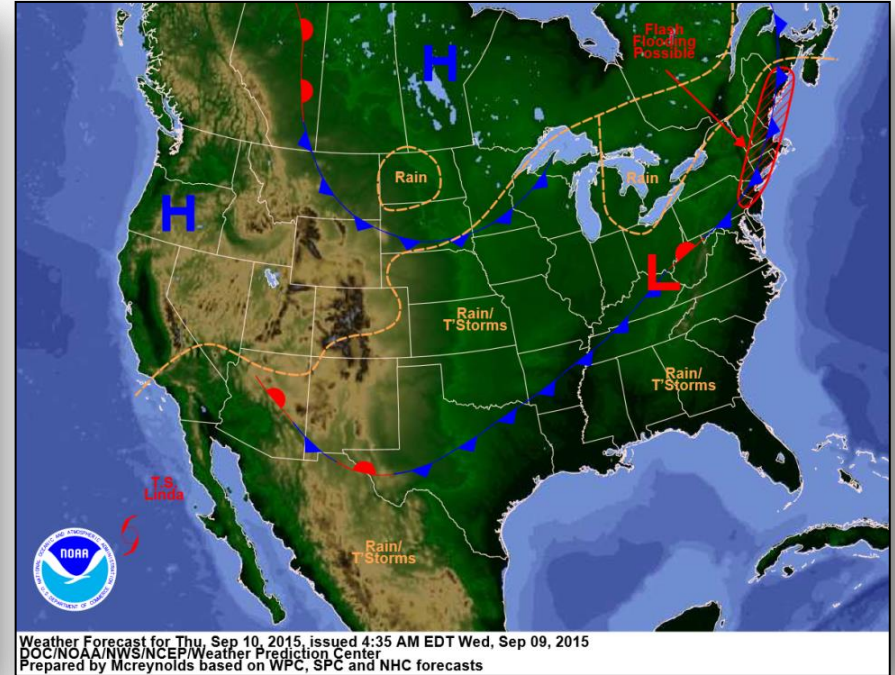


Region	State / Location	Event	IA/PA	Number of Counties		Start – End
				Requested	Complete	
X	WA	Wildfires June 29, 2015 & ongoing	IA	5	0	9/14 – TBD
			PA	5	0	9/14 – TBD
X	Colville Reservation (WA)	Wildfires June 29, 2015 & ongoing	IA	1	0	9/14 – TBD
			PA	1	0	9/14 – TBD

# National Weather Forecast



*Today*

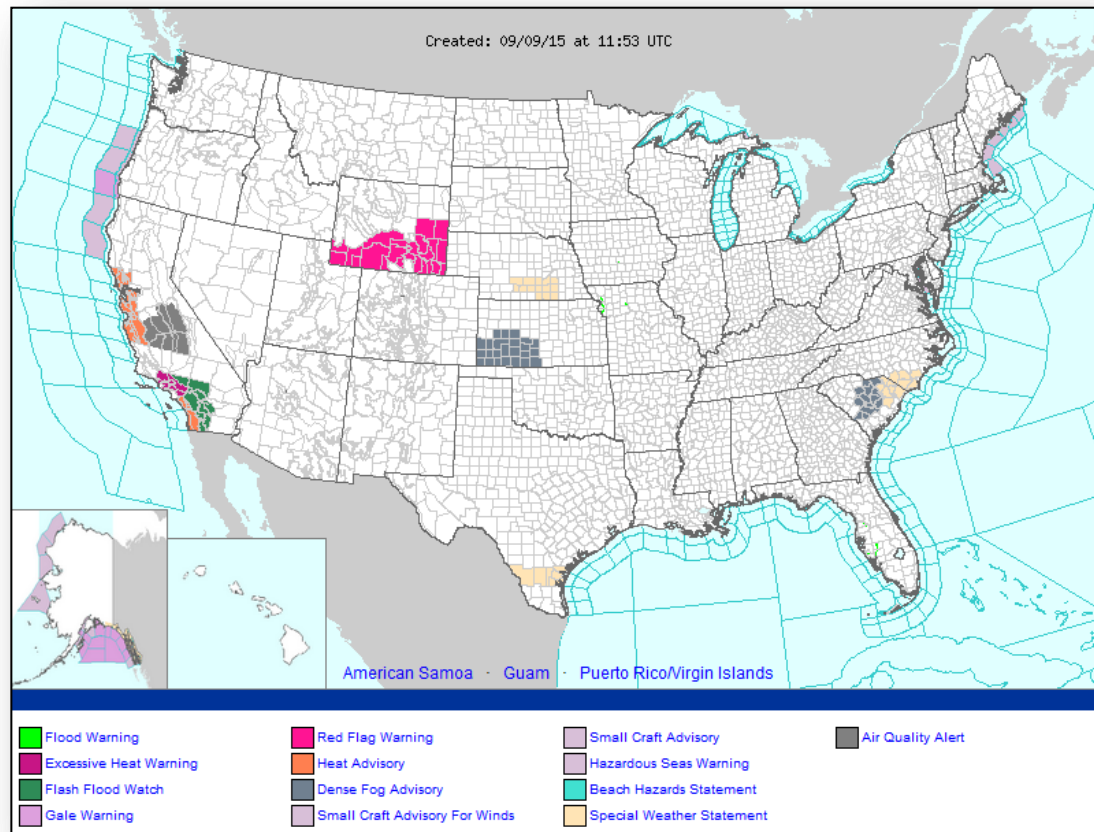


*Tomorrow*

# Active Watches/Warnings

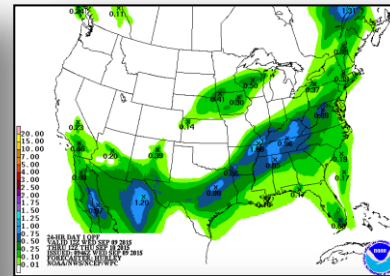
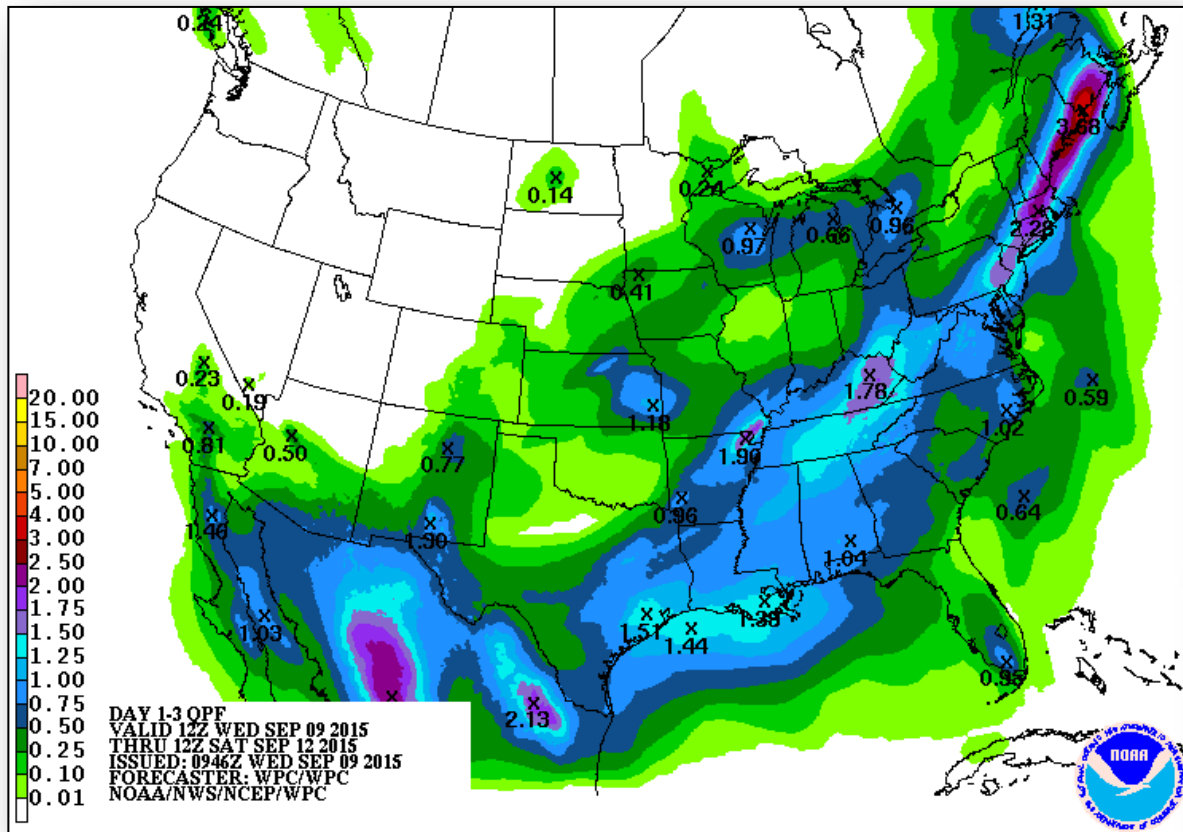


FEMA

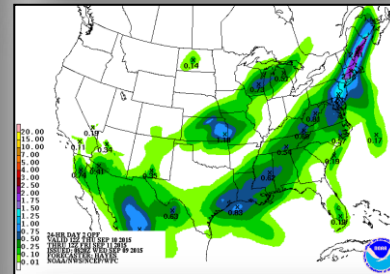




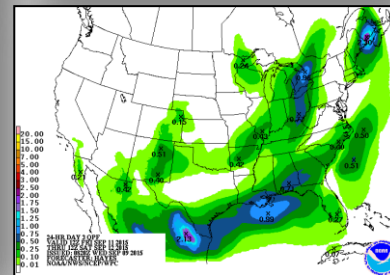
# Precipitation Forecast, 1 – 3 Day



Day 1



Day 2



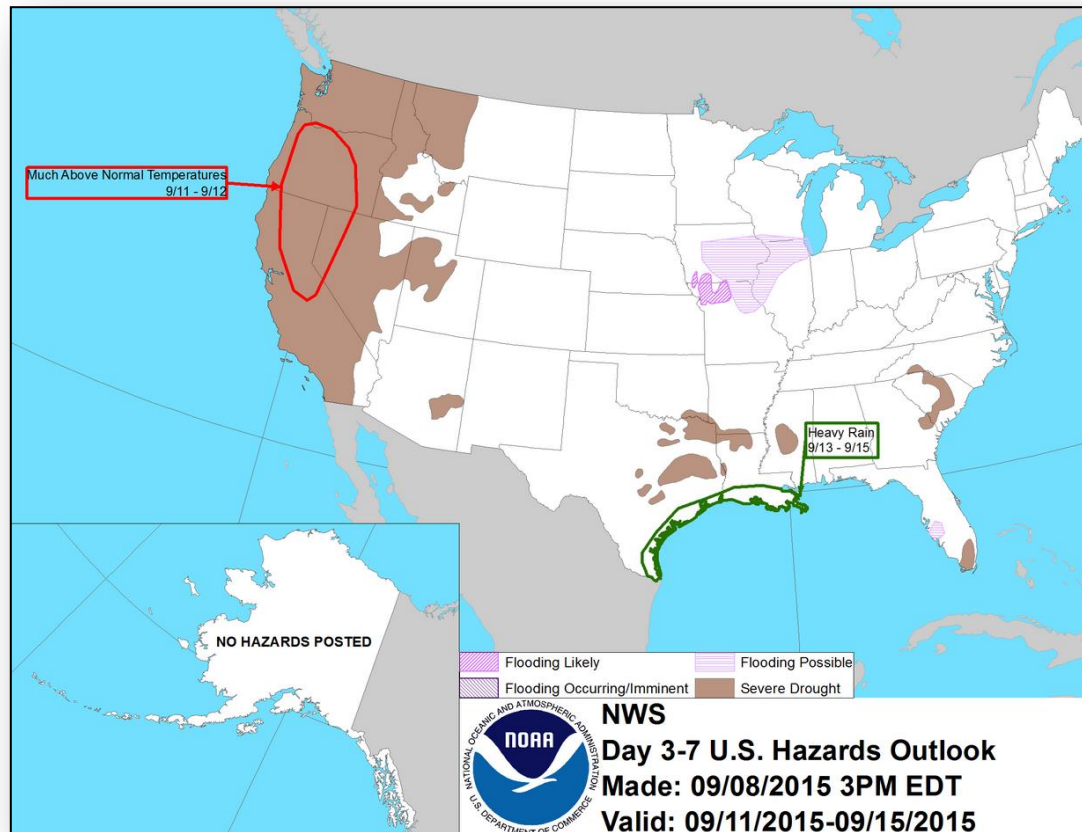
Day 3



# Hazard Outlook, September 11 –15



FEMA



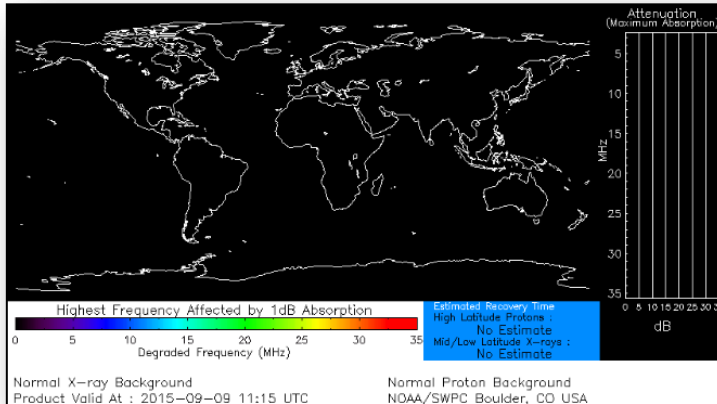
# Space Weather



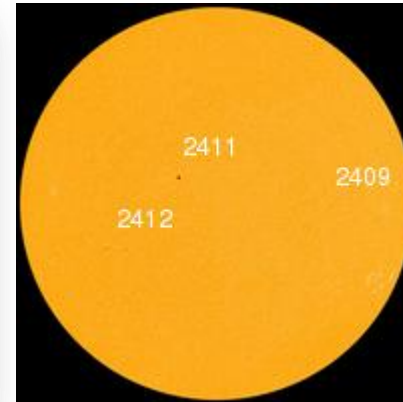
FEMA

	Past 24 Hours	Current	Next 24 Hours
Space Weather Activity:	Moderate	Minor	Moderate
• Geomagnetic Storms	G2	G1	G2
• Solar Radiation Storms	None	None	None
• Radio Blackouts	None	None	None

## HF Communication Impact



## Sunspot Activity



# FEMA Readiness – Deployable Teams /Assets



Deployable Teams/Assets									
Resource	Status	Total	FMC Available		Partially Available	Not Available	Detailed, Deployed, Activated	Comments	Rating Criterion
FCO		35	9	26%	0	1	25		OFDC Readiness: FCO    Green    Yellow    Red Type 1    3+            2            1 Type 2    4+            3            2 Type 3    4                3            2  FDRC    3                2            1
FDRC		9	5	56%	0	0	4		
US&R		28	27	96%	0	1	0	NM-TF1 (Red) – Personnel shortages	<ul style="list-style-type: none"> <li>• Green = Available/FMC</li> <li>• Yellow = Available/PMC</li> <li>• Red = Out-of-Service</li> <li>• Blue = Assigned/Deployed</li> </ul>
National IMAT		3	3	100%	0	0	0		<ul style="list-style-type: none"> <li>• Green: 3 avail</li> <li>• Yellow: 1-2 avail</li> <li>• Red: 0 avail (<i>Individual N-IMAT red if 50% of Section Chiefs and/or Team Leader is unavailable for deployment.</i>)</li> </ul>
Regional IMAT		13	7	54%	0	0	6	<u>Deployed:</u> RIV (Team 1) returned from KY RVI (Team 2) deployed to TX RVII deployed to MO RVIII (Team 1) deployed to SD & CO RIX (Teams 1 & 2) deployed to CNMI RX deployed to WA	<ul style="list-style-type: none"> <li>• Green: 7 or more avail</li> <li>• Yellow: 4 - 6 teams available</li> <li>• Red: &gt; 8 teams deployed/unavailable</li> </ul> R-IMAT also red if TL Ops/Log Chief is unavailable & has no qualified replacement
MCOV		59	48	81%	0	11	0		<ul style="list-style-type: none"> <li>• Green = 80 – 100% avail</li> <li>• Yellow = 60 – 79% avail</li> <li>• Red = 59% or below avail</li> <li>• Readiness remains 95%</li> </ul>

# FEMA Readiness – National/Regional Teams



National/Regional Teams									
Resource	Status	Total	FMC Available		Partially Available	Not Available	Status	Comments	Rating Criterion
NWC		5	5	100%	0	0	24/7		• Green = FMC • Yellow = PMC • Red = NMC
NRCC		2	344	89%	0	44	Not Activated		
HLT		1	N/A	N/A	0	0	Activated		
DEST							Not Activated		
RRCCs		10	10	100%	0	0	Not Activated		
RWCs/MOCs		10	10	100%	0	0	Not Activated		



# FEMA

**FEMA's mission is to support our citizens and first responders to ensure that as a nation we work together to build, sustain, and improve our capability to prepare for, protect against, respond to, recover from, and mitigate all hazards.**