

The Disaster Center is dedicated to the idea that disaster mitigation is cost effective and individuals pursuing their own interest are the greatest potential force for disaster reduction.

Please consider making a small donation to the Disaster Center



When disaster mitigation is cost effective, we are on the road to bringing disasters to an end.



FEMA

Daily Operations Briefing

Sunday, September 10, 2017

8:30 a.m. EDT

Significant Activity – Sep 9-10



FEMA

Significant Events: Response to Harvey; Response/ Preparations for Hurricane Irma

Tropical Activity:

- Atlantic – Hurricane Irma (CAT 4); Hurricane Jose (CAT 4); Disturbance 1 – Medium (60%)
- Eastern Pacific – Disturbance 1 – Low (10%); Disturbance 2 – Medium (50%); Disturbance 3 – Medium (50%)
- Central Pacific – No tropical cyclones expected next 5 days
- Western Pacific – No systems threatening U.S. territories

Significant Weather:

- Severe thunderstorms – FL (Hurricane Irma)
- Flash flooding possible - FL, GA, and SC (Hurricane Irma)
- Red Flag Warnings – MT
- Elevated fire weather – MT
- Space weather:
 - Past 24 hours: Minor; radio blackouts reaching R1 level occurred
 - Next 24 hours: Moderate; radio blackouts reaching R2 level expected

Earthquake Activity: No significant activity

Declaration Activity:

- FMAG approved - West Fork Fire, MT
- FMAG approved - Alice Creek Fire, MT
- FMAG approved - Rice Ridge Fire, MT

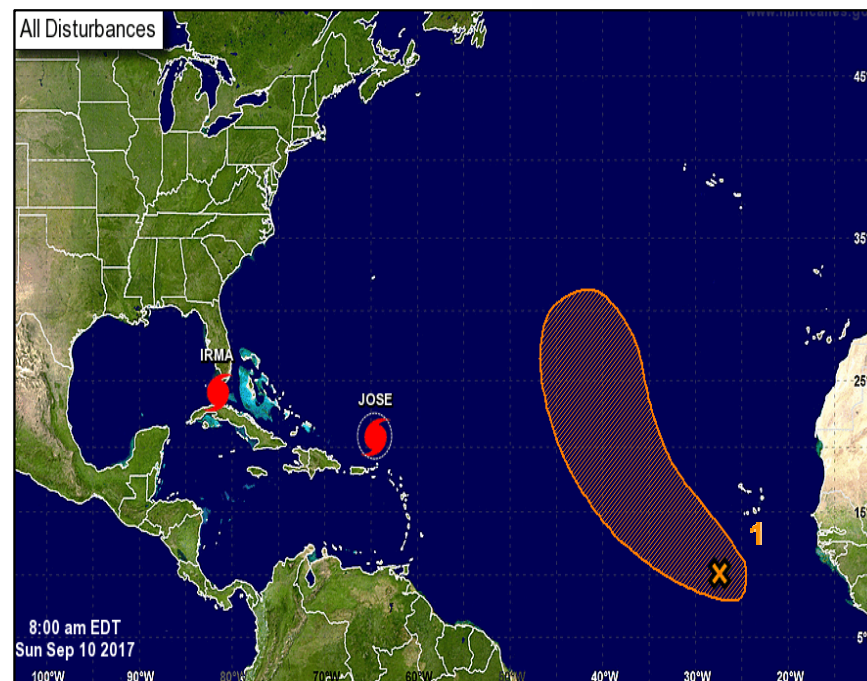
Tropical Outlook – Atlantic



FEMA

Disturbance 1 (as of 8:00 a.m. EDT)

- Located a few hundred miles SSE of the Cabo Verde Islands
- Moving NW over eastern Atlantic Ocean
- Conditions expected to be conducive for some development
- Tropical depression could form next few days
- Formation chance through 48 hours: Low (30%)
- Formation chance through 5 days: Medium (60%)



Hurricane Jose



FEMA

Hurricane JOSE (CAT 4) (Advisory #20A as of 8:00 a.m. EDT)

- Located 250 miles NNW of northern Leeward Islands
- Moving NW at 16 mph
- Maximum sustained winds 130 mph
- Slower forward motion expected later Monday into Tuesday as it begins turn N
- Hurricane force winds extend 40 miles; tropical storm force winds extend 160 miles
- No coastal watches and warnings in effect



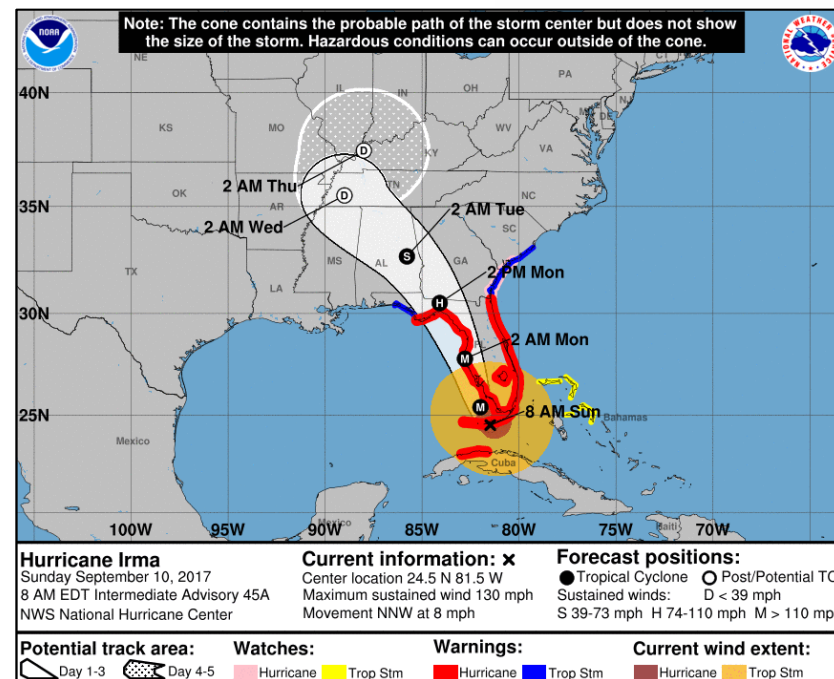
Hurricane Irma



FEMA

Hurricane IRMA (CAT 4) (Advisory #45A as of 8:00 a.m. EDT)

- Located 20 miles ESE of Key West, FL
- Moving NNW at 8 mph; this motion will continue through Monday
- Maximum sustained winds 130 mph
- Eye of Irma should move over the lower FL Keys, then move near or over west coast of FL Peninsula later today through tonight, then move inland over northern FL and southwestern GA by Monday afternoon.
- Hurricane force winds extend 80 miles; tropical storm force winds extend 220 miles
- Hurricane, Tropical Storm, and Storm Surge Watches and Warnings in effect



Hurricane Irma Response/Preparations



FEMA HQ

- NRCC: Level I (24/7) with all ESFs and LNOs; NWC: Steady State
- National IMATs: East 1 deployed to GA EOC; East 2 deployed to FL EOC
- FEMA Corps: Teams deployed to PR (1) and Atlanta, GA (1)
- Region X IMAT: deployed to PR
- [Region III IMAT: deployed to AL](#)
- [National Tribal Affairs Advisor deploying to Region IV RRCC](#)
- ISB at Randolph AFB, TX to support air operations; resources staged in GA, FL, PR, and USVI
- US&R: 1,299 persons supporting operations in PR, USVI, and FL
- MERS/MCOVs: Deployed to support FEMA IMAT, US&R, ESF-8, NDMS, and ISB teams in FL, GA, LA, NC, SC, and TX

Hurricane Irma Response/Preparations



FEMA Region II

- RRCC: Level I (day shift) with all ESFs and LNOs; Level II (night shift) with select ESFs
- Watch: Steady State
- IMAT A: Deployed to USVI (St. Croix)
- IMAT B: Deployed to USVI
- IMAT C: Deployed to PR

USVI & Puerto Rico

- USVI and PR EOCs: Full Activation; FEMA-4335-DR-USVI, 3384-EM-PR, and 3383-EM-USVI approved; PR request for Expedited Major Disaster Declaration
- Fatalities: 5; injuries: unknown
- **Shelters: USVI - 6 open with 376 occupants; PR - 5 open with 69 occupants**
- Airports: St. Thomas: closed to commercial traffic; open for military/emergency operations only; San Juan Airport: open
- Ports: **St. Thomas ports closed; 2 ports in PR closed**
- **Roads: PR - all interstates and major roads open**
- Power outages:
 - PR: **544k (-326k) customers without power**
 - **USVI: 7k customers without power on St. Croix; 19k (-1k) (all customers except some limited essential facilities) without power on St. Thomas; 3k without power on St. John**
- **Water: 341k (+120k) without potable water in USVI (281k due to power failure); 580k people in PR in need of drinking water; drinking water stations are being set up throughout island**
- **Hospitals: PR: 1 of 69 hospitals closed; 25 hospitals working on generator power; USVI: 1 hospital closed and evacuated in St. Thomas**

Hurricane Irma Response/Preparations



FEMA Region III

- **RRCC: De-activated**; RWC: Steady State
- IMAT-1: deployed to WV (for FEMA-4331-DR-WV)
- **IMAT Purple: Re-deploying to AL EOC**
- VA: EOC will activate to Monitoring; declared a State of Emergency

Hurricane Irma Response/Preparations



FEMA

FEMA Region IV

- RRCC: Level I (24/7); RWC: Steady State
- IMAT-1: deployed to FL; IMAT-2: deployed to SC; [Region III IMAT-Purple deployed to AL](#)
- LNOs deployed to FL, SC, GA, NC [and AL EOCs](#); [LNO deploying to Seminole Tribe of Florida](#)

Florida

- EOC at Full Activation; State of Emergency declared for [67 counties](#); FEMA-3385-EM-FL approved Sep 5
- [Evacuations: mandatory for 30 counties; voluntary for 16 counties](#)
- [Shelters: 460 shelters open with 127k occupants \(ESF-6 as of 7:05 a.m. EDT\)](#)
- [Power: 342k customers without power](#)
- Transportation:
 - Airports: Key West, Miami IAP & [Orlando IAP \(MCO\)](#); [St. Petersburg/Clearwater IAP](#); [Naples, Sarasota/Bradenton IAP](#) closed
 - Rail: [operations shut down for all FL commercial and passenger railroads as of Sep 9](#)
 - Ports: [all ports in FL closed except Egmont Key which is open with restrictions](#)
- [Hospitals: 34 closed; evacuating 204 healthcare facilities \(includes 18 hospitals\)](#)

Seminole Tribe of Florida:

- [EOC at Full Activation; FEMA-3388-EM approved Sep 8; 5 shelters open with 77 occupants](#)

Georgia

- EOC at Full Activation; State of Emergency declared for [94 counties](#); FEMA-3387-EM-GA approved Sep 8
- [Evacuations: mandatory for six counties east of I-95; 32 medical facilities \(includes 13 hospitals\) evacuated](#)
- [Shelters: 34 open with 4,413 occupants](#)

South Carolina

- EOC at Full Activation; activated 900 Army National Guard personnel
- State of Emergency declared; FEMA-3386-EM-SC approved Sep 6; [evacuation order in effect for barrier islands; 140 healthcare facilities in coastal counties are evacuating](#)
- [Shelters: 3 open with 245 occupants](#)

Alabama: [EOC at Full Activation; State of Emergency declared; Governor has not yet issued a general evacuation; 5 shelters open with no occupants](#)

North Carolina: [EOC at Full Activation; 4 shelters open with no occupants](#)

Kentucky: [EOC returned to normal operations](#)

Tennessee: [EOC at normal operations; 5 shelters open with 36 occupants](#)

Tropical Cyclone Harvey



Current Situation:

Response and recovery efforts continue; area rivers and bayous will continue to fall below major flood stage

Impacts:

- **Medical:** 7 hospitals remain closed
- **Power Outages:** 11k customers remain without power in TX* (as of 7:30 a.m. EDT)
- **Shelters:** 31 open with 7k occupants

Response:

FEMA Region VI

- RRCC: not activated; RWC: Steady State
- Region VI IMAT-1: Deployed to TX
- Region VI IMAT-2: Deployed to TX
- Region VI IMAT-3: Deployed to TX
- TX EOC at Full Activation
- OK & AR EOCs at Monitoring for EMAC support

FEMA Headquarters

- NRCC: Level I (24/7) with all ESFs and LNOs (Hurricane Irma); NWC: Steady State
- National IMAT West: Deployed to Austin, TX
- Region V, VII, and VIII IMATs deployed to TX
- ISBs: Seguin, TX; Camp Beauregard, LA; Randolph, TX
- MERS: MCOVs in TX
- FEMA Corps: 42 teams (315 members) deployed

**Note: Customer outage data is provided by the Department of Energy's EAGLE-I system. Comprehensive National coverage of all electrical service providers is not available*

Tropical Outlook – Eastern Pacific



FEMA

Disturbance 1 (as of 8:00 a.m. EDT)

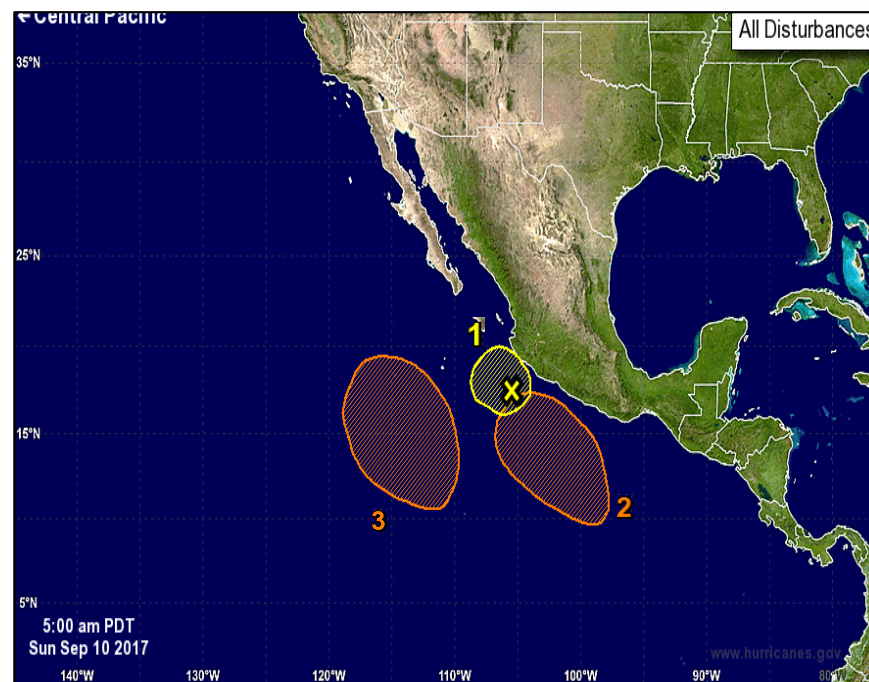
- Remnants of Katia located a couple hundred miles SW of Mexico
- Moving W at 10 mph
- Conditions not conducive for formation
- Formation chance through 48 hours: Low (10%)
- Formation chance through 5 days: Low (10%)

Disturbance 2 (as of 8:00 a.m. EDT)

- Expected to form a few hundred miles S of southern Mexico
- Moving slowly NNW over eastern Atlantic Ocean
- Formation chance through 48 hours: Low (10%)
- Formation chance through 5 days: Medium (50%)

Disturbance 3 (as of 8:00 a.m. EDT)

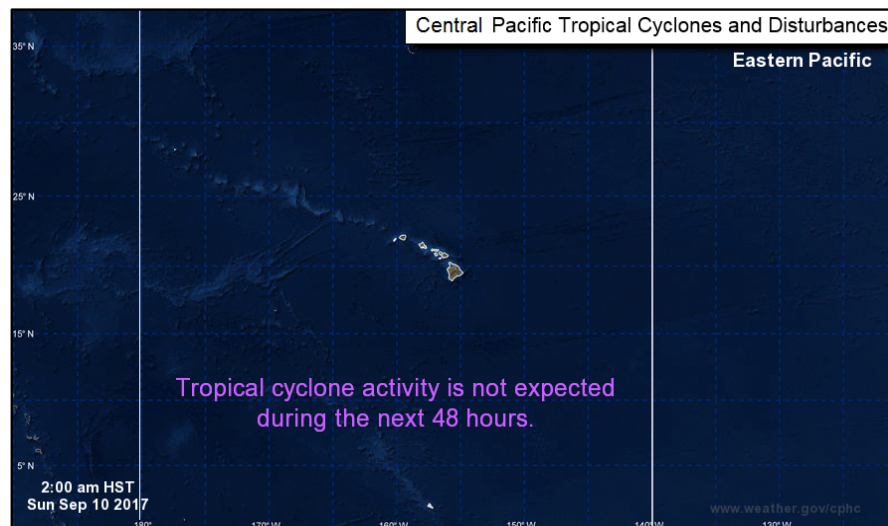
- Expected to form well S of Baja Peninsula, Mexico
- Moving NW over eastern Atlantic Ocean
- Conditions expected to be conducive for gradual development
- Formation chance through 48 hours: Low (near 0%)
- Formation chance through 5 days: Medium (50%)



Tropical Outlook – Central Pacific



FEMA



48-Hour Outlook

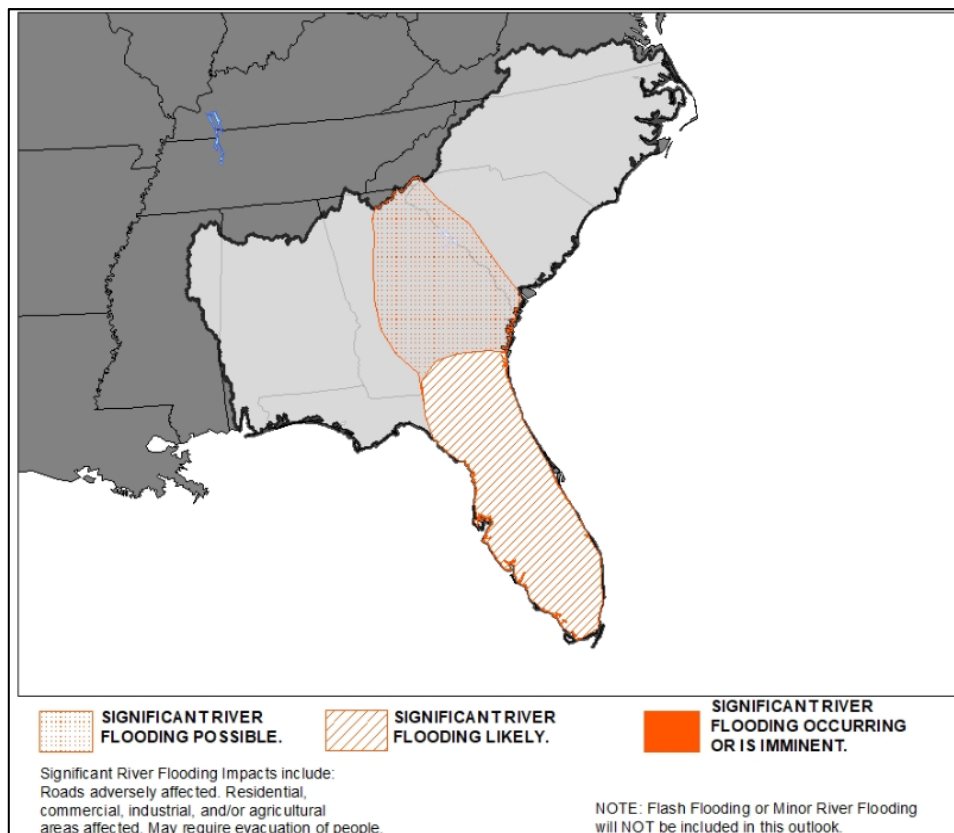


5 Day Outlook

Southeast River Flood Outlook



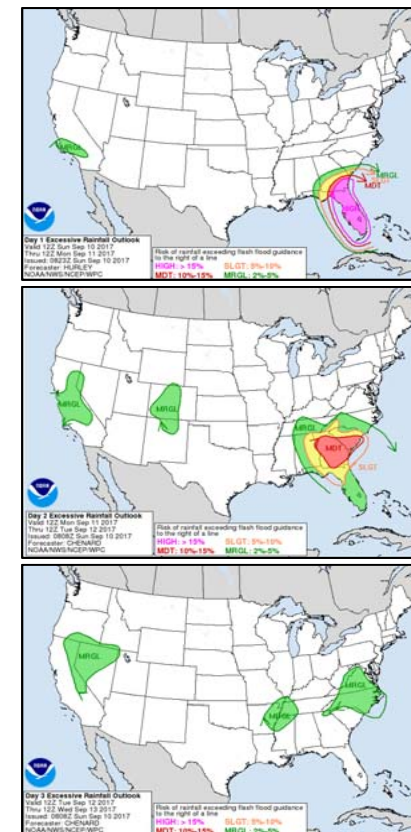
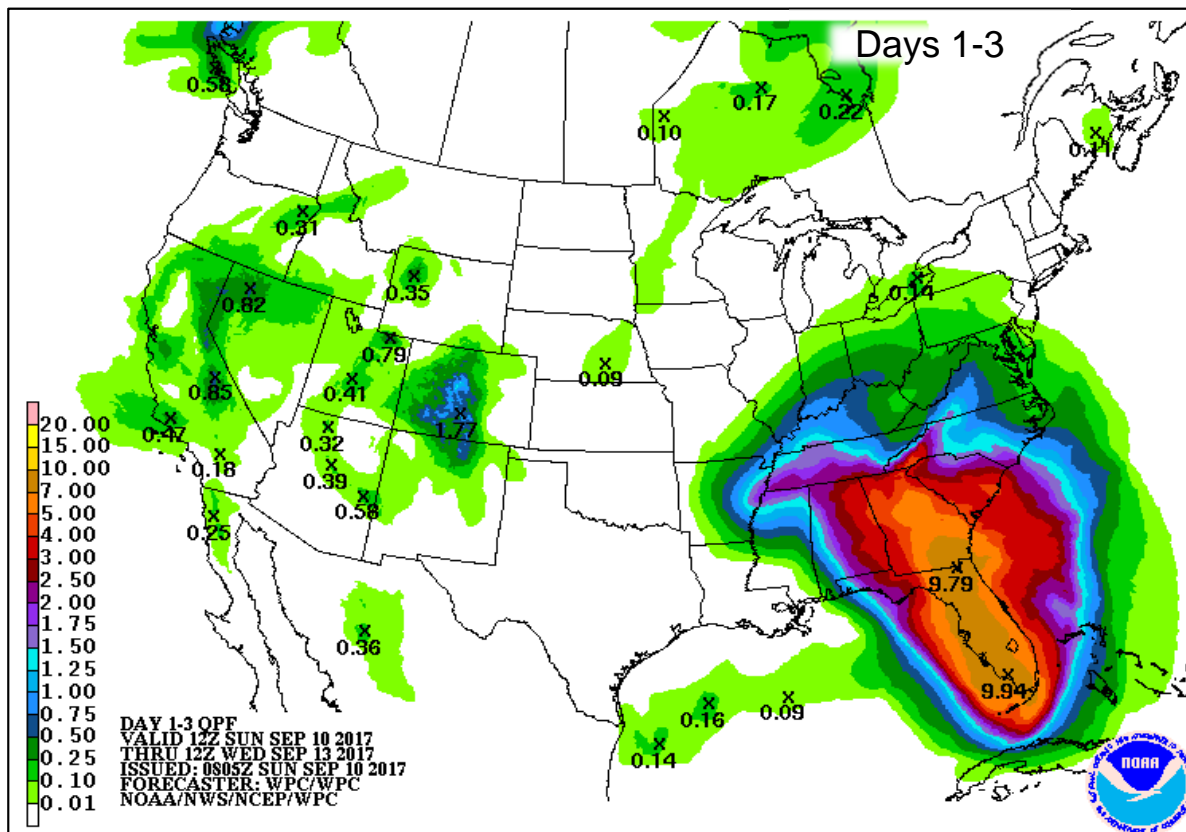
FEMA



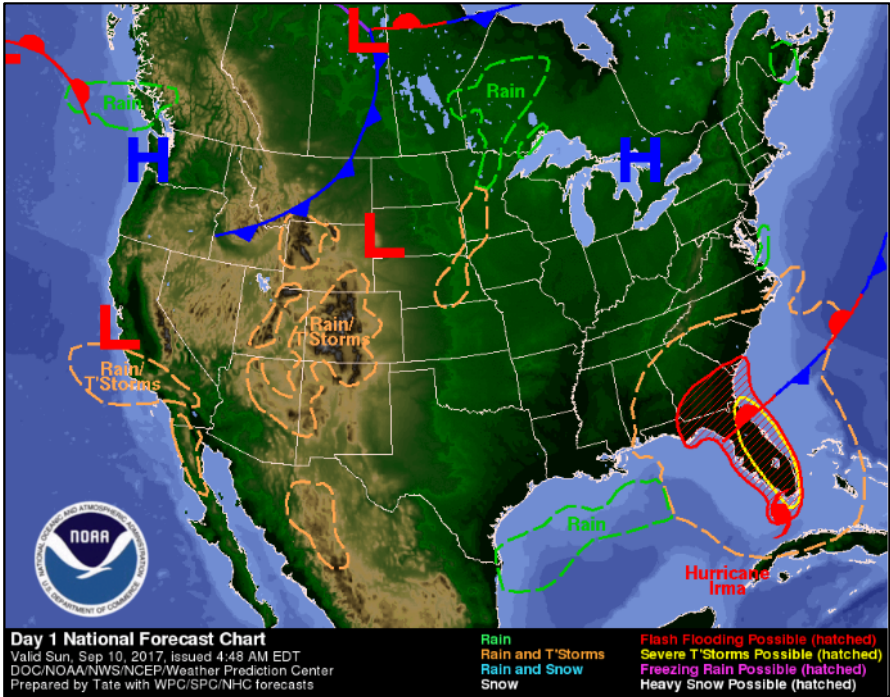
Precipitation Forecast



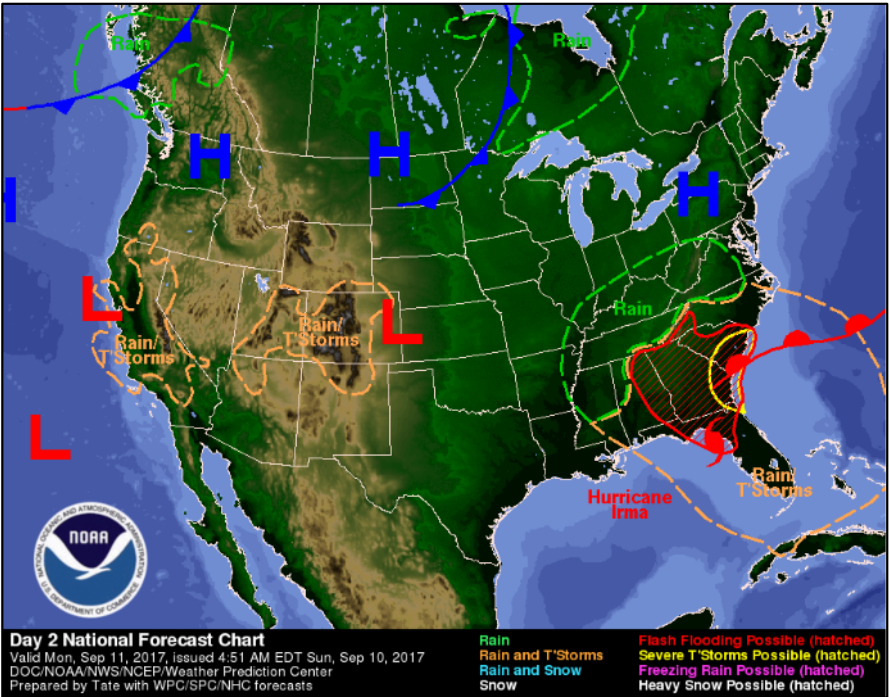
FEMA



National Weather Forecast



Today

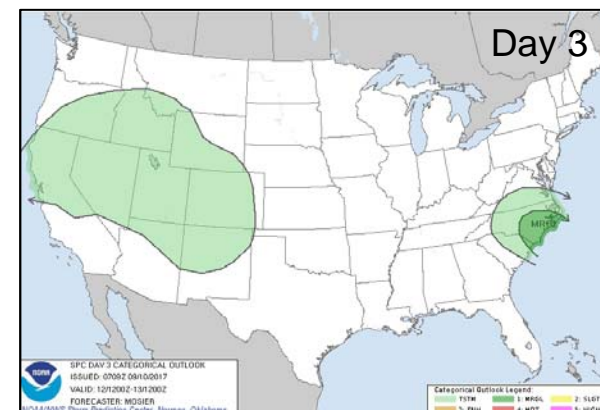
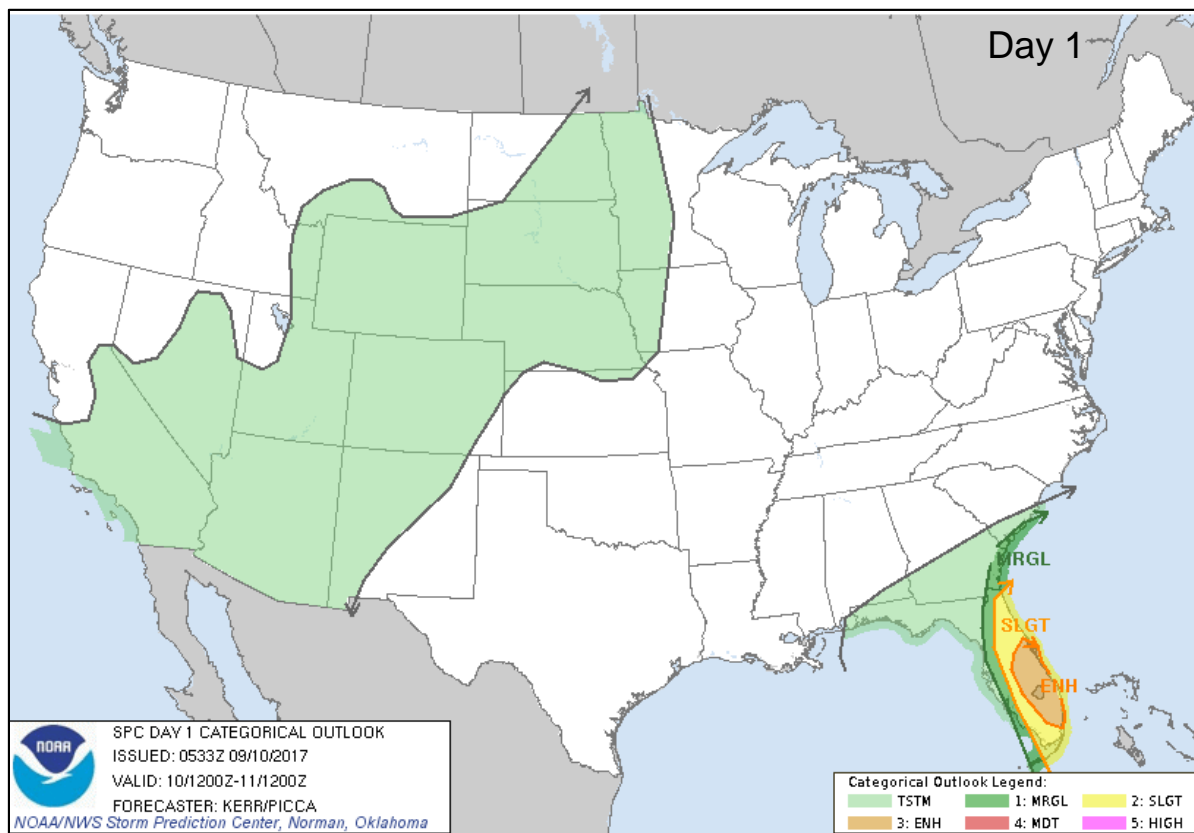


Tomorrow

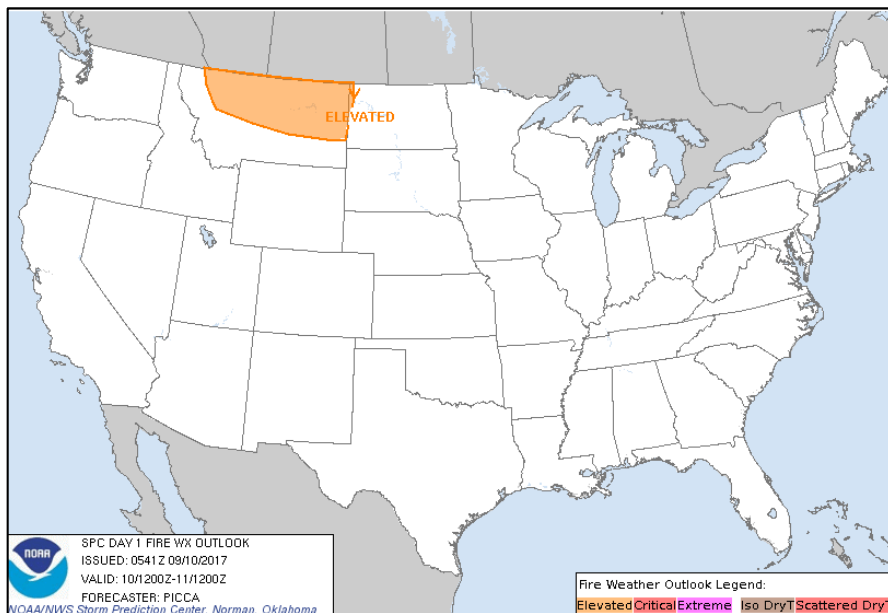
Severe Weather Outlook – Days 1-3



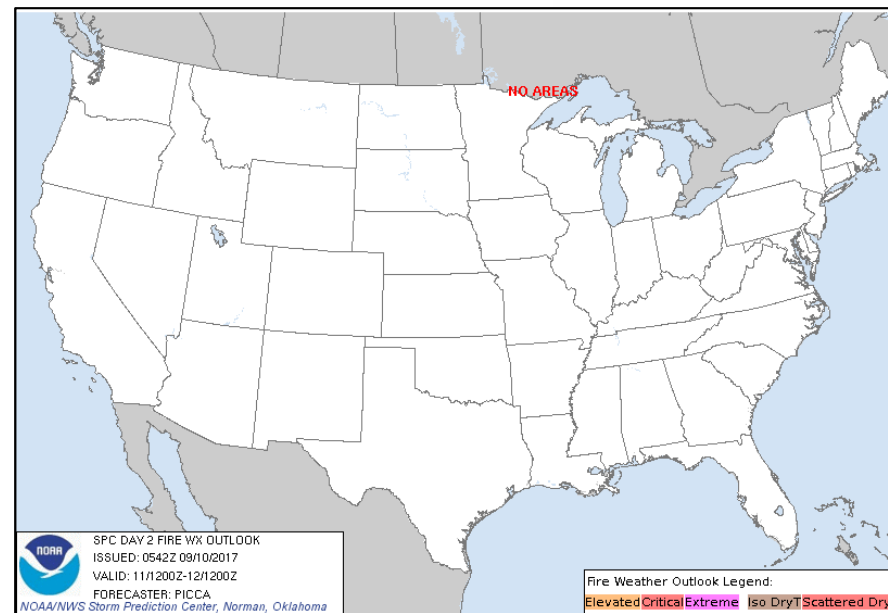
FEMA



Fire Weather Outlook

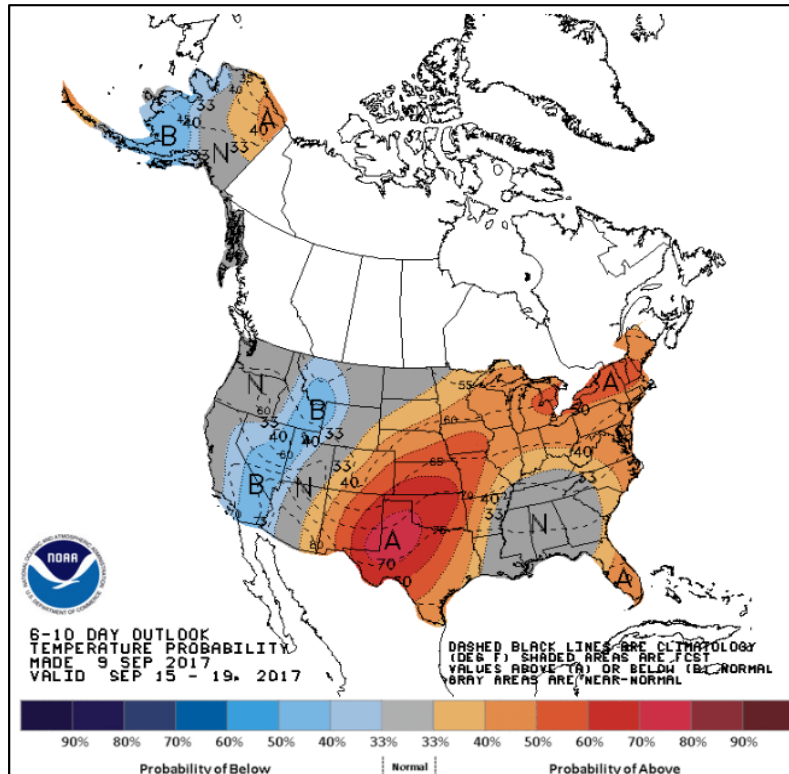


Today

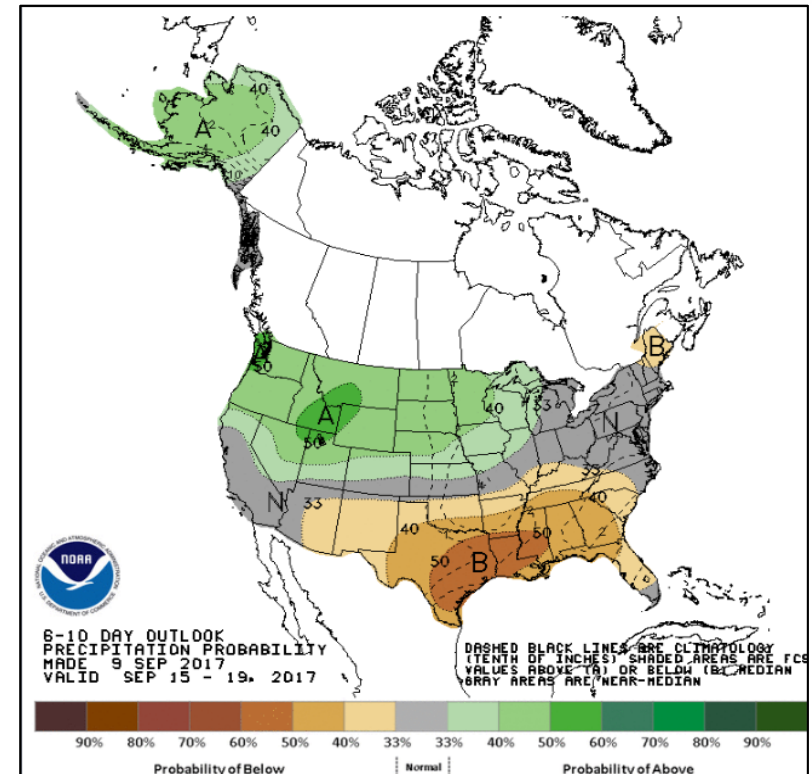


Tomorrow

6-10 Day Outlooks



6-10 Day Temperature Probability



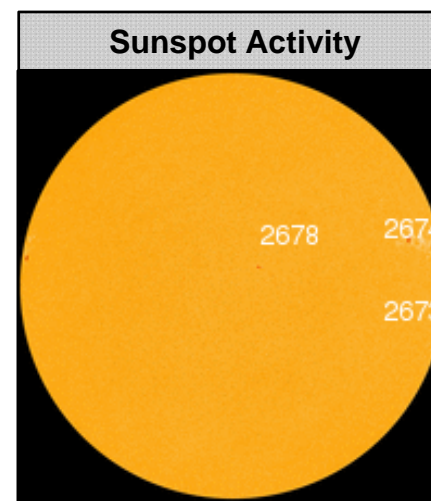
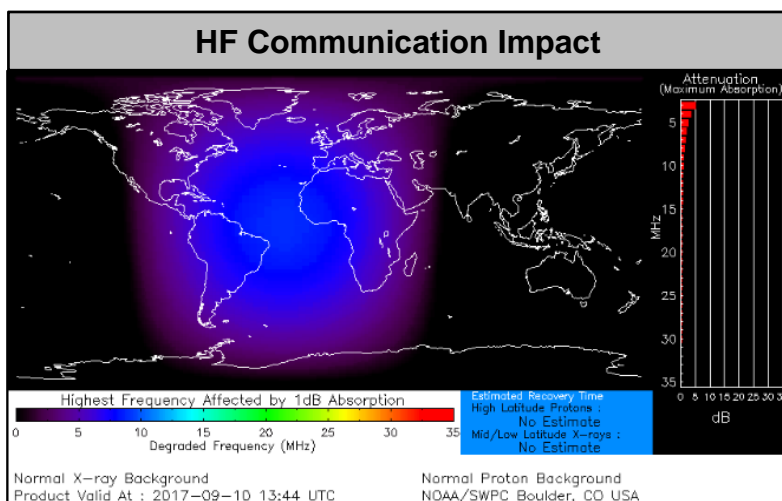
6-10 Day Precipitation Probability

Space Weather



FEMA

| | Space Weather Activity | Geomagnetic Storms | Solar Radiation | Radio Blackouts |
|---|------------------------|--------------------|-----------------|-----------------|
| Past 24 Hours | Minor | None | None | R1 |
| Next 24 Hours | Moderate | None | None | R2 |
| For further information on NOAA Space Weather Scales refer to http://www.swpc.noaa.gov/noaa-scales-explanation | | | | |



Rice Ridge Fire – MT



FEMA

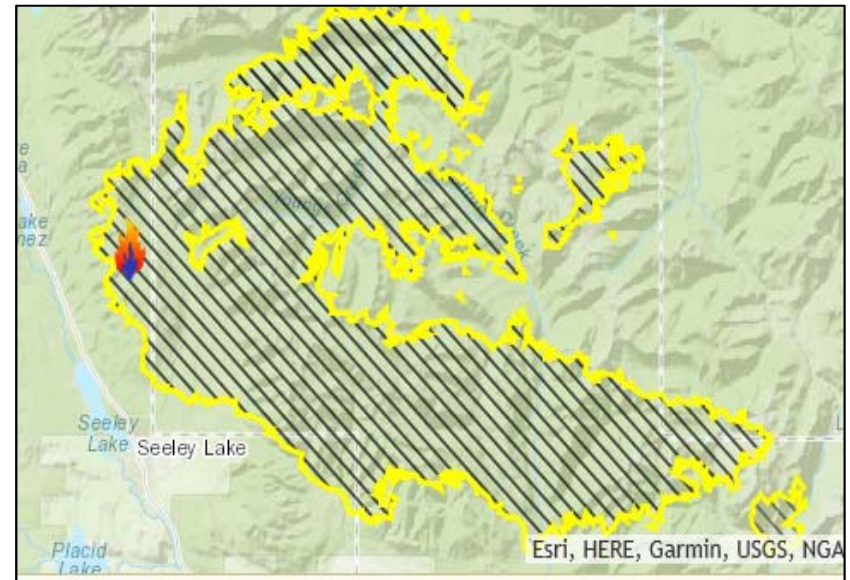
| Fire Name (County) | FMAG # / Approved | Acres burned | Percent Contained | Evacuations (Residents) | Structures | | | Fatalities / Injuries |
|---|----------------------------|-----------------|----------------------|----------------------------|------------------------|---------|-----------|-----------------------------|
| | | | | | Threatened | Damaged | Destroyed | |
| Rice Ridge (Missoula & Powell counties) | XXXX-FM-MT Sept 9 ,2017 | 125,292 | 8% | Mandatory | 1,719 (1,305 homes) | 0 | 0 | 0 / 11 |

Current Situation

- Fire began July 24, 2017 and is threatening communities in and around Seeley Lake, MT (pop 3,000)
- Threatening 1,305 homes, infrastructure, utilities, equipment, cell towers, and power substations in the area
- Evacuations in effect for approximately 2,415 people

Response

- FMAG approved on September 9, 2017



Alice Creek Fire – MT



FEMA

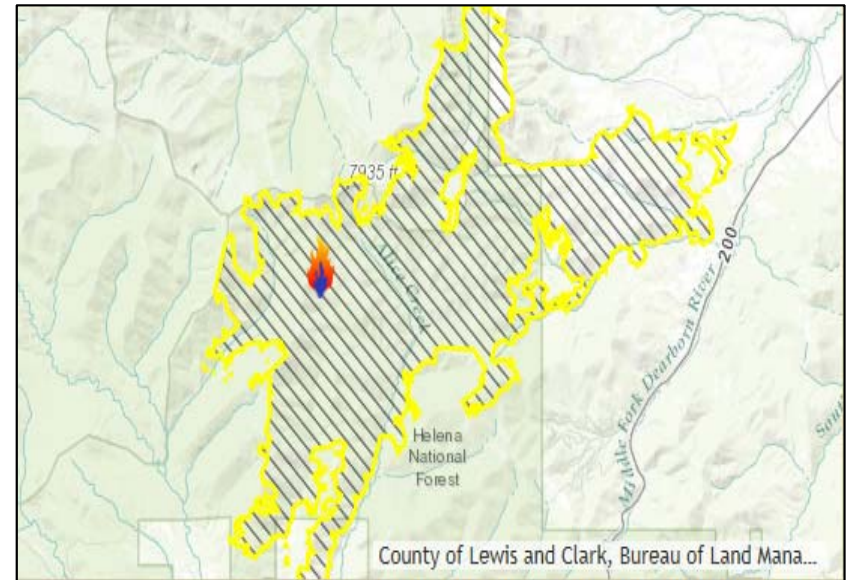
| Fire Name (County) | FMAG # / Approved | Acres burned | Percent Contained | Evacuations (Residents) | Structures | | | Fatalities / Injuries |
|--|----------------------------|-----------------|----------------------|----------------------------|------------------|---------|-----------|-----------------------------|
| | | | | | Threatened | Damaged | Destroyed | |
| Alice Creek (Lewis & Clark County) | XXXX-FM-MT Sept 9 ,2017 | 24,128 | 0% | Mandatory | 90 (90 homes) | 0 | 4 | 0 / 0 |

Current Situation

- Fire began July 22, 2017 and is threatening 90 business and residence in and around August, MT (pop 225)
- Threatening buildings, critical national defense infrastructure, utilities, equipment and Blackfoot River watershed in the area
- Evacuations in effect for approximately 30 people

Response

- FMAG approved on September 9, 2017



West Fork Fire – MT



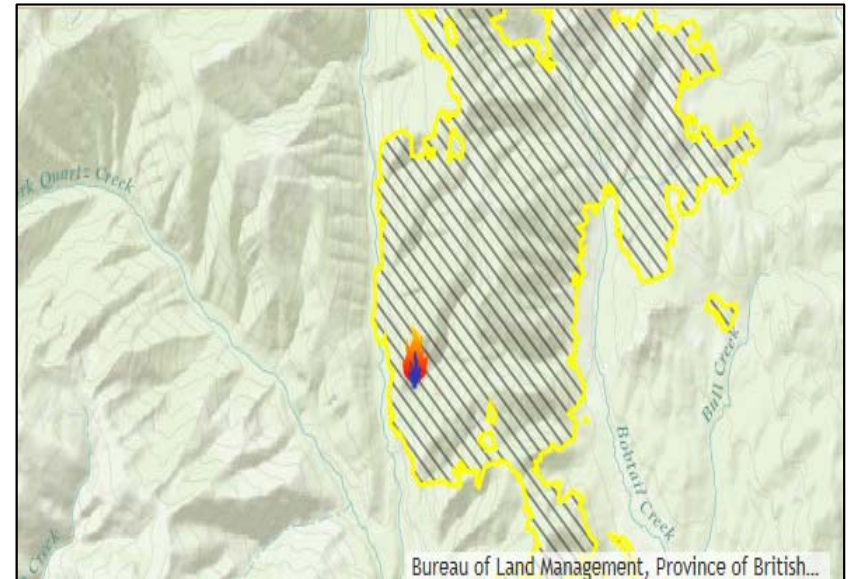
| Fire Name (County) | FMAG # / Approved | Acres burned | Percent Contained | Evacuations (Residents) | Structures | | | Fatalities / Injuries |
|-------------------------------|----------------------------|-----------------|----------------------|----------------------------|--------------------|---------|-----------|-----------------------------|
| | | | | | Threatened | Damaged | Destroyed | |
| West Fork (Lincoln County) | XXXX-FM-MT Sept 9 ,2017 | 9,923 | 0% | Mandatory | 709 (705 homes) | 0 | 0 | 0 / 0 |

Current Situation

- Fire began August 30, 2017 and is threatening 747 homes in and around Libby, MT (pop 2,628)
- Threatening buildings, businesses, transmission lines, cell towers, and three watersheds in the area
- Evacuations in effect for approximately 182 people

Response

- FMAG approved on September 9, 2017



Wildfire Summary



FEMA

| Fire Name (County) | FMAG # (Approved Date) | Acres Burned | Percent Contained | Evacuations (Residents) | Structures | | | Fatalities / Injuries |
|---------------------------------|-------------------------------|---------------------|----------------------|----------------------------|--------------------------|----------------|-------------------|--------------------------|
| | | | | | Threatened | Damaged | Destroyed | |
| California (4) | | | | | | | | |
| Helena (Trinity) | 5199-FM-CA Sept 1, 2017 | 20,455 (+101) | 42% (+2) | Mandatory | 5,250 (4,000 homes) | 8 (4 homes) | 133 (72 homes) | 0 / 2 |
| Railroad (Madera & Mariposa) | 5202-FM-CA Sept 2, 2017 | 12,353 (+9) | 70% (+15) | Mandatory | 150 (150 homes) | 0 | 17 (5 homes) | 1 / 5 |
| Pier (Tulare) | 5205-FM-CA Sept 5, 2017 | 26,748 (+1,799) | 55% (+15) | Mandatory | 544 (-10) (540 homes) | 0 | 2 | 0 / 5 |
| Oregon (2) | | | | | | | | |
| Chetco Bar (Curry) | 5198-FM-OR August 20, 2017 | 182,284 (+4,591) | 5% | Mandatory | 12,286 (8,523 homes) | 9 (1 home) | 30 (6 homes) | 0 / 4 (+1) |
| Eagle Creek (Hood River) | 5203-FM-OR Sept 3, 2017 | 33,382 | 7% | Mandatory | 5,230 (5,230 homes) | 0 | 4 (4 homes) | 0 / 0 |
| Washington (1) | | | | | | | | |
| Jolly Mountain (Kittitas) | 5200-FM-WA Sept 2, 2017 | 27,412 (+1,087) | 10% (+2) | Mandatory | 5,277 (4,204 homes) | 0 | 0 | 0 / 7 (+1) |

Joint Preliminary Damage Assessments



FEMA

| Region | State / Location | Event | IA/PA | Number of Counties | | Start – End |
|--------|------------------|--|-------|--------------------|-----------|---------------|
| | | | | Requested | Completed | |
| VI | NM | Severe Storms August 3, 2017 | IA | 0 | 0 | N/A |
| | | | PA | 1 | 1 (+1) | Sep 6 – Sep 7 |
| IX | AZ | Excessive Rainfall July 23-24, 2017 | IA | 0 | 0 | N/A |
| | | | PA | 1 | 1 (+1) | Sep 6 – Sep 8 |

Disaster Requests & Declarations



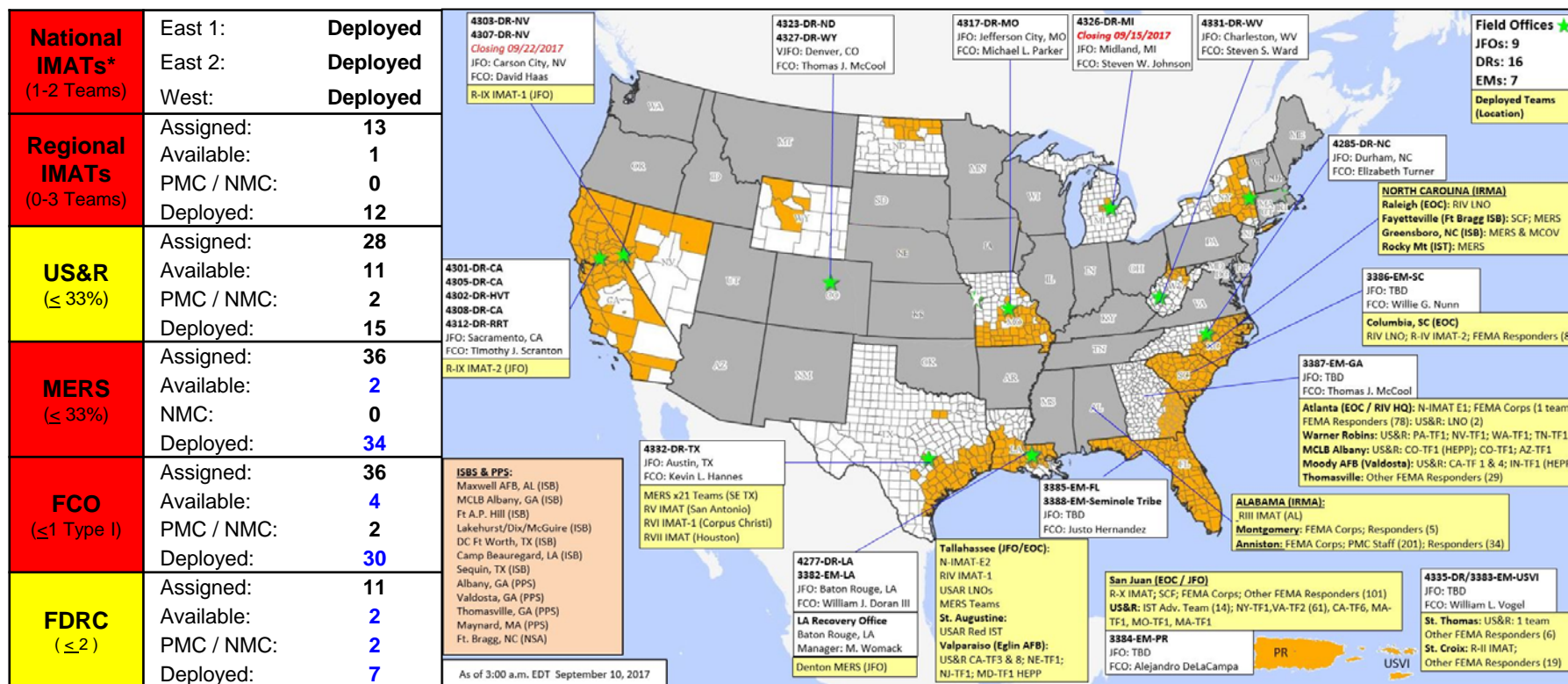
FEMA

| Declaration Requests in Process | | | | | Requests APPROVED (since last report) | Requests DENIED (since last report) |
|---|----|----|----|-------------------|---|---|
| 9 | IA | PA | HM | Requested | 0 | 0 |
| NY – DR (Expedited) Flooding | X | X | X | July 6, 2017 | | |
| ID – DR Flooding | | X | X | July 20, 2017 | | |
| ND – DR Drought | X | X | X | August 7, 2017 | | |
| WI – DR Severe Storms, Straight-line Winds, Flooding, Landslides, Mudslides | | X | X | August 23, 2017 | | |
| ND – DR Severe Storm | | X | X | August 24, 2017 | | |
| KS – DR Severe Storms, Straight-line Winds, and Flooding | | X | X | August 31, 2017 | | |
| IL – DR Severe Storms and Flooding | X | | X | August 31, 2017 | | |
| NY – DR Severe Storms, Tornadoes, and Flooding | X | | X | August 31, 2017 | | |
| PR – DR (Expedited) Hurricane Irma | X | X | X | September 7, 2017 | | |

Readiness – Deployable Teams and Assets



FEMA



***B-2 Status**: Assemble ≤ 2-hrs, On Site ≤ 18-hrs; **B-48 Status**: Assemble and deploy ≤ 48hrs; **Charlie Status**: No team assemble time requirement

FEMA Readiness – Activation Teams



| Resource | Status | Total | Status | Activated Team | Activation Level | Activation Times | Reason/Comments |
|-----------|--------|-------|---------------|--|---|--|---|
| NWC | | 5 | Not Activated | | | | |
| NRCC | | 2 | Activated | Blue | Level I | 24/7 | Tropical Cyclone Irma |
| HLT | | 1 | Activated | | | | Hurricane Season |
| RWCs/MOCs | | 10 | Not Activated | | | | |
| RRCCs | | 10 | Activated | Region I Region II Region IV Region III | Level III Level I / Level II Level I Not Activated | Day shift Day shift / Night shift 24/7 | Tropical Cyclone Irma Tropical Cyclone Irma Tropical Cyclone Irma |

Back-up Region: V



FEMA

FEMA's mission is to support our citizens and first responders to ensure that as a nation we work together to build, sustain, and improve our capability to prepare for, protect against, respond to, recover from, and mitigate all hazards.