

The Disaster Center is dedicated to the idea that disaster mitigation is cost effective and individuals pursuing their own interest are the greatest potential force for disaster reduction.

Please consider making a small donation to the Disaster Center



When disaster mitigation is cost effective, we are on the road to bringing disasters to an end.



# **FEMA**

## **Daily Operations Briefing**

**Friday, September 12, 2014**

**8:30 a.m. EDT**

# Significant Activity: Sep 11 – 12



**Significant Events:** None

## **Tropical Activity:**

- Atlantic – Tropical Storm Edouard; Disturbance 1 (Low, 20%); Disturbance 2 (Low, 20%)
- Eastern Pacific – Tropical Storm Odile; Tropical Depression Sixteen-E
- Central Pacific – Disturbance 1 (Low, 10%)

## **Significant Weather:**

- Flash flooding possible – Southwest to Southern Plains
- Heavy rain possible – portions of the Western Gulf Coast, Southern High Plains & southern Florida
- Elevated Fire Weather Areas: WA & OR ; Red Flag Warnings: WA & OR
- Space Weather: Past 24 hours – Minor; R1 radio blackouts & S1 solar radiation storms; Next 24 hours – Strong; G3 geomagnetic storms, R1 radio blackouts and S1 solar radiation storms predicted

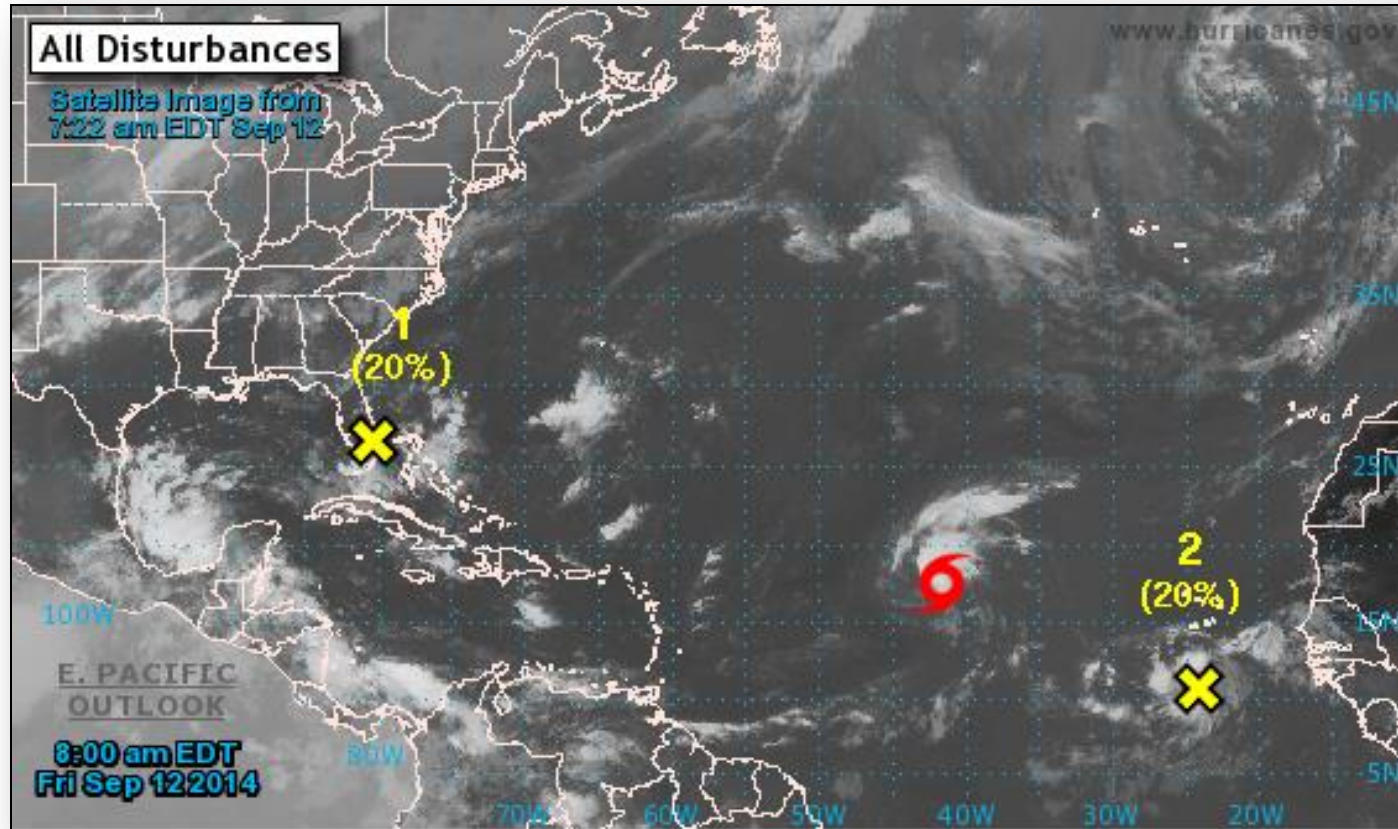
**FEMA Readiness:** No activity

**Declaration Activity:** Major Disaster Declaration approved for California

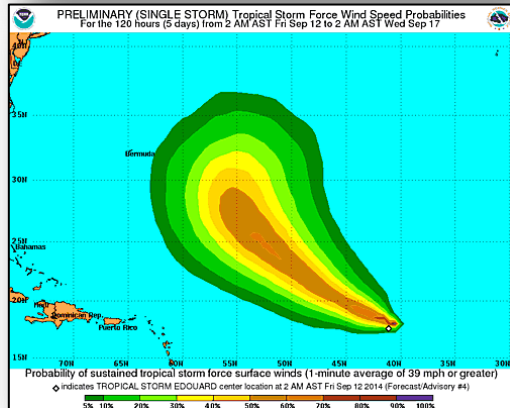
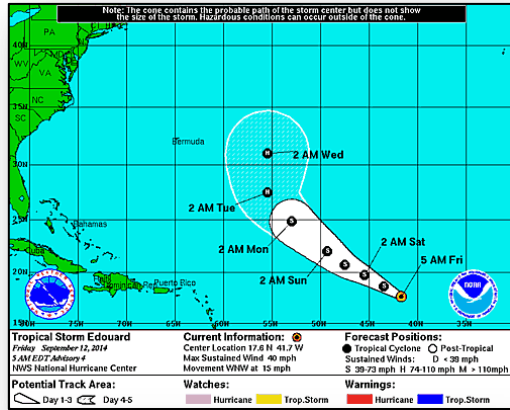
# 2-Day Tropical Outlook – Atlantic



FEMA



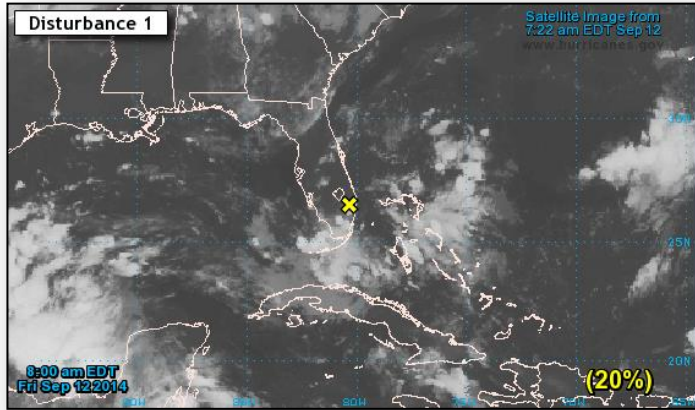
# Tropical Storm Edouard – Atlantic



## Tropical Storm Edouard (as of 5:00 a.m. EDT)

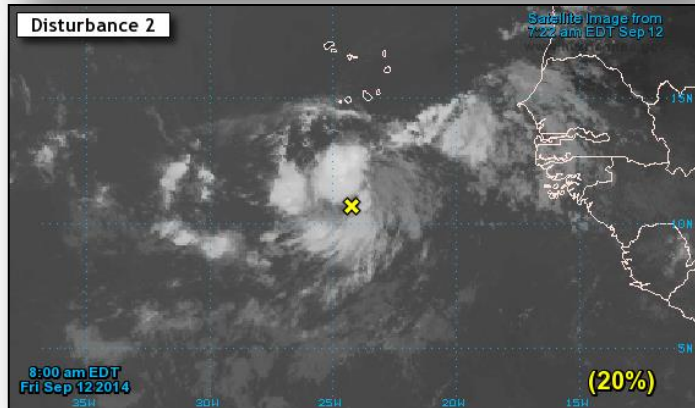
- Located 1,175 miles W of Cape Verde Islands
- Moving WNW at 15 mph
- Turn toward NW at slightly slower forward speed expected next two days
- Maximum sustained winds 40 mph
- Some strengthening forecast next 48 hours
- Tropical storm force winds extend 70 miles

# 2-Day Tropical Outlook – Atlantic



## Disturbance 1 (as of 8:00 a.m. EDT)

- Located over southern FL; just south of Lake Okeechobee
- Moving westward at 10 mph
- Interaction with FL peninsula will likely inhibit development
- Could become a little more conducive for development over weekend
- Low will bring locally heavy rains to portions of FL through Saturday
- Formation chance:
  - Next 48 hours: Low (20%)
  - Next 5 days: Medium (40%)



## Disturbance 2 (as of 8:00 a.m. EDT)

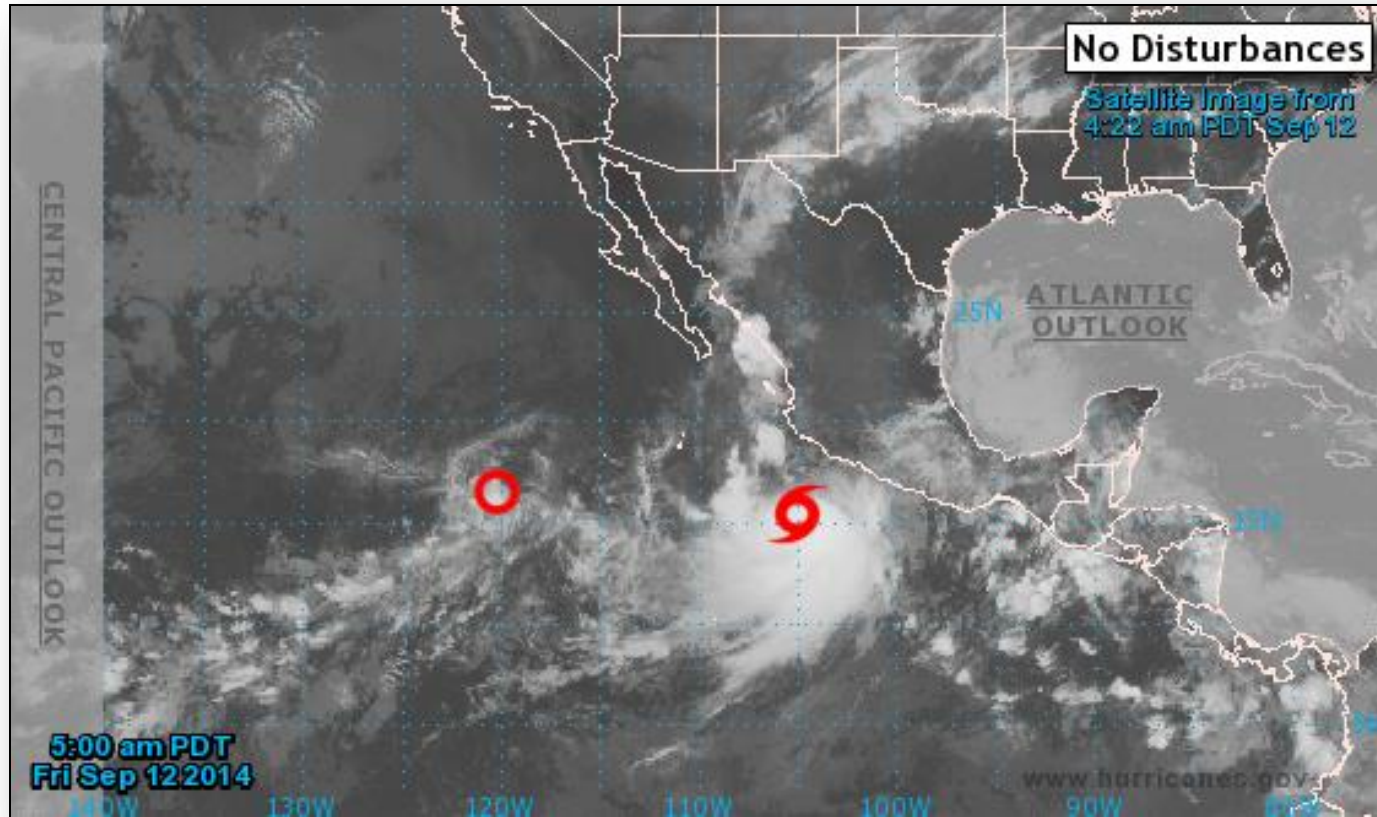
- Located south of Cape Verde Islands is showing signs of organization
- Moving W to WNW at 10 mph
- After that, conditions expected to be unfavorable for development
- Formation chance:
  - Next 48 hours: Low (20%)
  - Next 5 days: Low (20%)



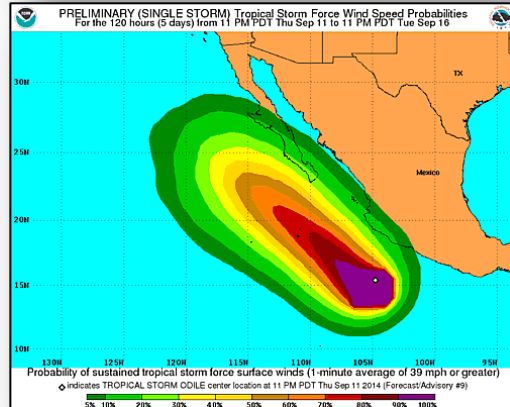
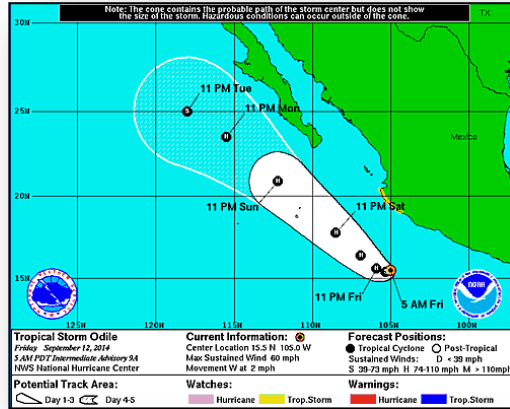
# 2-Day Tropical Outlook – Eastern Pacific



FEMA



# Eastern Pacific-Tropical Storm Odile

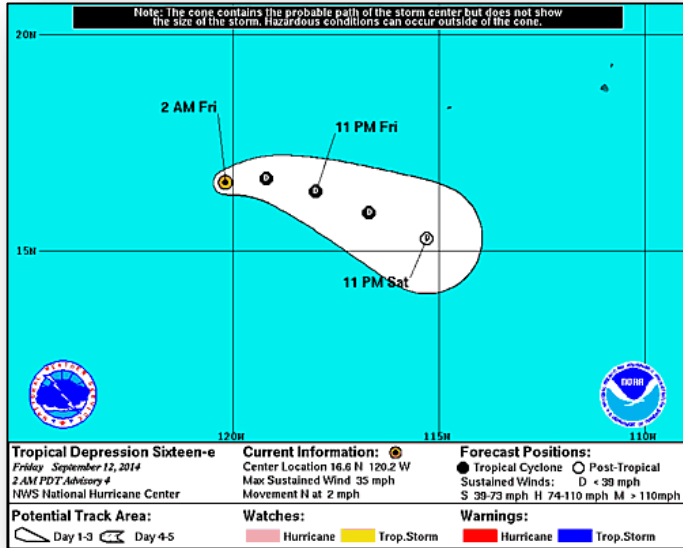


## Tropical Storm Odile (as of 8:00 a.m. EDT)

- Located 250 miles S of Manzanillo, Mexico
- Moving W at 2 mph
- A faster motion toward WNW expected to develop by tonight, followed by acceleration toward NW on Saturday
- On forecast track, center will remain well offshore of southwestern coast of Mexico through Sunday
- Maximum sustained winds 60 mph
- Some strengthening forecast next 48 hours
- Could become hurricane by tonight
- Tropical storm force winds extend 205 miles



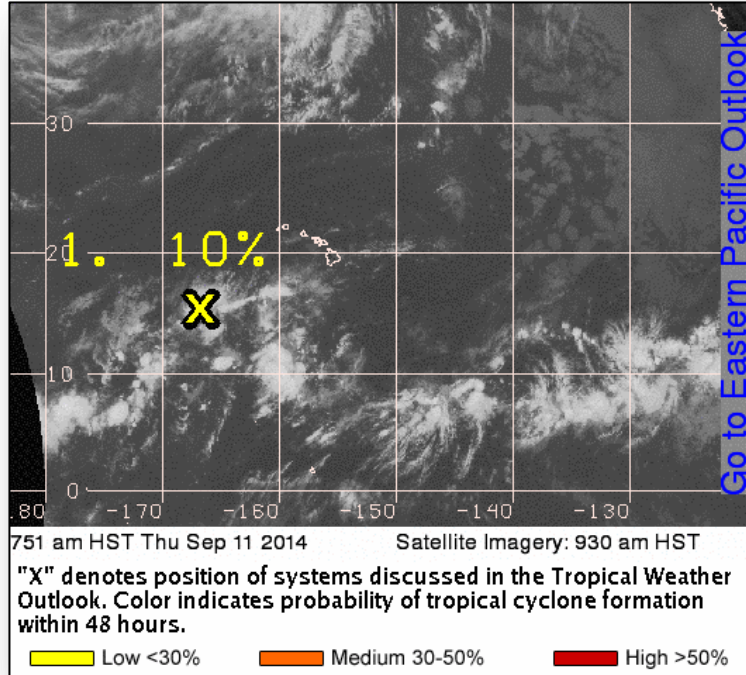
# Tropical Depression 16E – Eastern Pacific



## Tropical Depression Sixteen-E (as of 5:00 a.m. EDT)

- Located 800 miles WSW of southern tip of Baja California
- Moving N at 2 mph
- A turn E with increase in forward speed expected later today
- Turn ESE forecast on Saturday
- Maximum sustained winds 35 mph
- Little change in strength forecast next day or so
- Expected to become remnant low by late Saturday

# 2-Day Tropical Outlook – Central Pacific



## **Disturbance 1 (as of 8:00 a.m. EDT)**

- Located 770 miles SW of Honolulu, HI
- Moving slowly west
- Low potential for development
- Formation chance:
  - Next 48 hours: Low (10%)

# Wildfire Summary



Fire Name (County)	FMAG #	Acres Burned	% Contained Est. Containment date	Evacuations (Residents)	Structures Threatened	Structures Destroyed	Fatalities / Injuries
California							
Happy Camp Complex (Siskiyou County)	Not requested	108,000 (+2,806)	45% (+15)	Mandatory	743 (695 homes)	6 (2 homes)	0 / 12

# Disaster Requests & Declarations



Declaration Requests in Process		Requests APPROVED (since last report)	Requests DENIED (since last report)
2	Date Requested	1	0
CA – DR Earthquake	September 2, 2014	Declared September 11, 2014	
VT – DR Severe Storms and Flooding	September 5, 2014		
HI – DR Tropical Storm Iselle (PA)	September 4, 2014		

# Major Disaster Declaration – California



## **FEMA-4193-DR-CA**

- Major Disaster Declaration approved September 11, 2014 for State of California
- For earthquake August 24 to September 7, 2014
- Provides:
  - Public Assistance for Napa and Solano counties
  - Hazard Mitigation statewide
  - Individual Assistance under review
- FCO is Stephen M. De Blasio Sr.



 Declared PA Counties

# Open JFOs Friday, September 12, 2014



■ # Days Open ■ # Days Till Close

JFO	Event Nbr	Date Opened	Est Closed Date▲	Op Period End	# of Counties Declared	Level	# of JFO Staff	0 30 60 90 120 150 180 210 240 270 300 330 360 390 420 450
Guam	4191	09/10/2014			0	III	0	0
American Samoa	4192	09/10/2014			0	III	0	0
Alaska	4122	06/25/2013	09/12/2014	09/04/2014	5	II	64	443 444
Vermont	4178	06/11/2014	09/12/2014	07/11/2014	7	III	20	92 93
Washington	4188	08/12/2014	10/31/2014	09/12/2014	2	III	109	30 50 80
Tennessee	4189	08/13/2014	11/21/2014	08/28/2014	18	III	0	29 71 100
North Dakota	4190	08/19/2014	11/21/2014	09/12/2014	10	III	16	23 71 94
Nebraska	4183	07/24/2014	11/21/2014	11/21/2014	12	III	37	49 71 120
South Dakota	4186	08/12/2014	11/22/2014	09/17/2014	14	III	76	30 72 102
New York	4180	07/15/2014	11/25/2014	09/10/2014	11	III	81	58 75 133
Minnesota	4182	07/21/2014	12/21/2014	09/18/2014	37	III	125	52 101 153
Iowa	4184	07/24/2014	12/31/2014	09/09/2014	26	III	54	49 111 160



# Joint Preliminary Damage Assessments

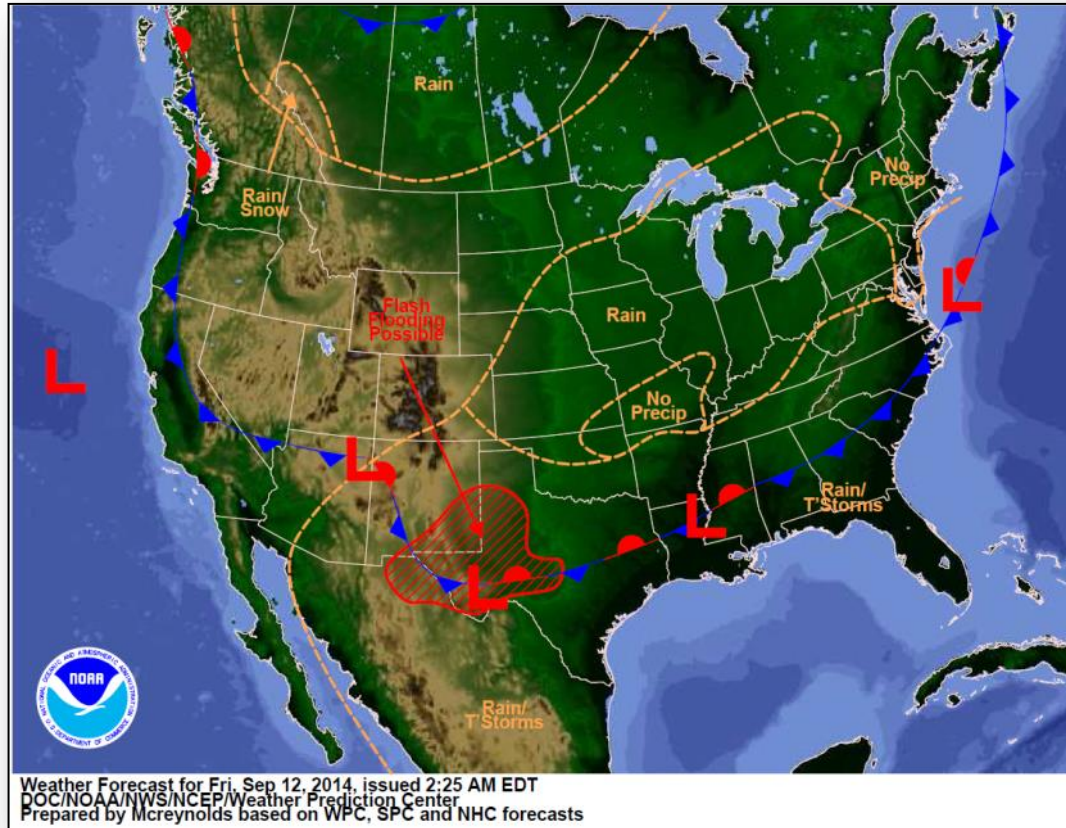


Region	State / Location	Event	IA/PA	Number of Counties		Start – End
				Requested	Complete	
III	MD	Severe Storms August 12, 2014	PA	2	0	9/10 – TBD
IV	KY	Severe Storms, Flash Flooding, Flooding, Slides, & Mudslides August 18-24, 2014	IA	1	0	9/10 – TBD
			PA	4	0	9/10 – TBD
VI	NM	Severe Storms & Flooding July 27- August 5, 2014	PA	8	0	9/10 – TBD
VIII	MT	Severe Storms & Flooding August 21-28, 2014	PA	6	0	9/22 – TBD
VIII	ND	Severe Storms & Flooding August 15-25, 2014	PA	5	0	9/15 – TBD

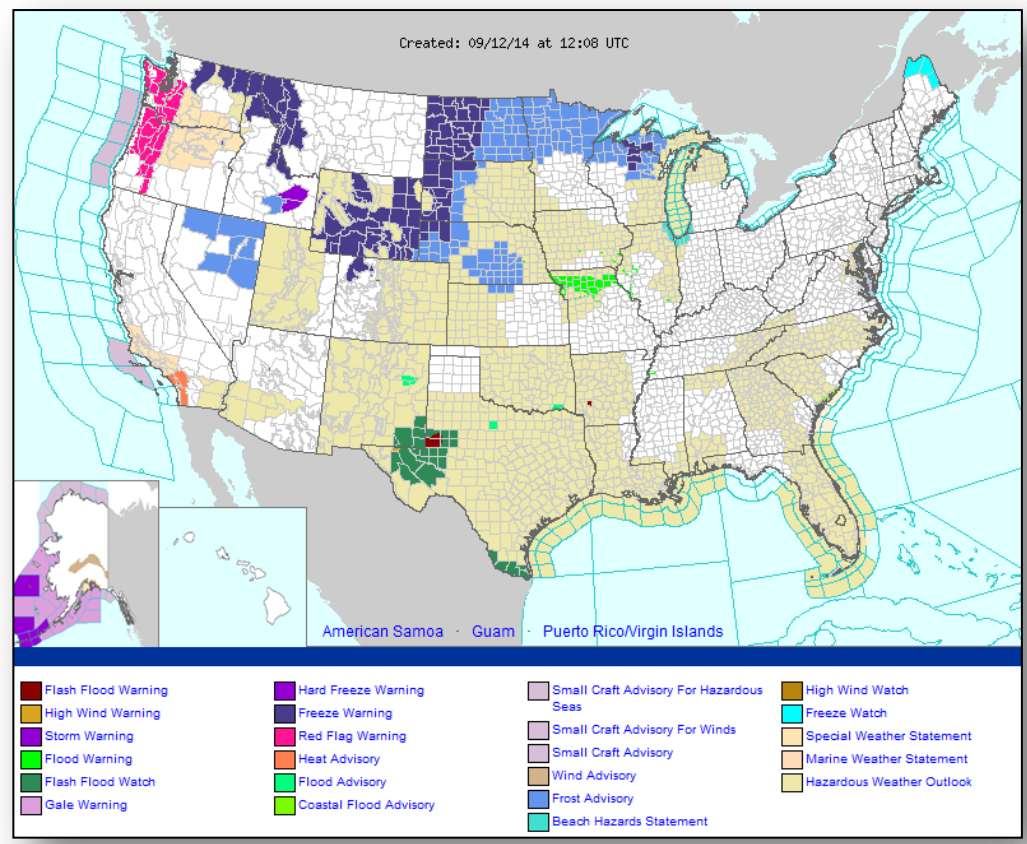
# National Weather Forecast



FEMA



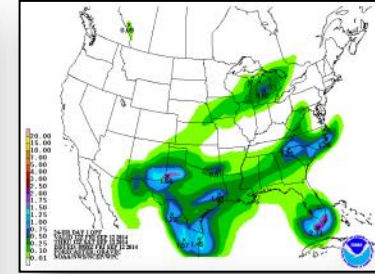
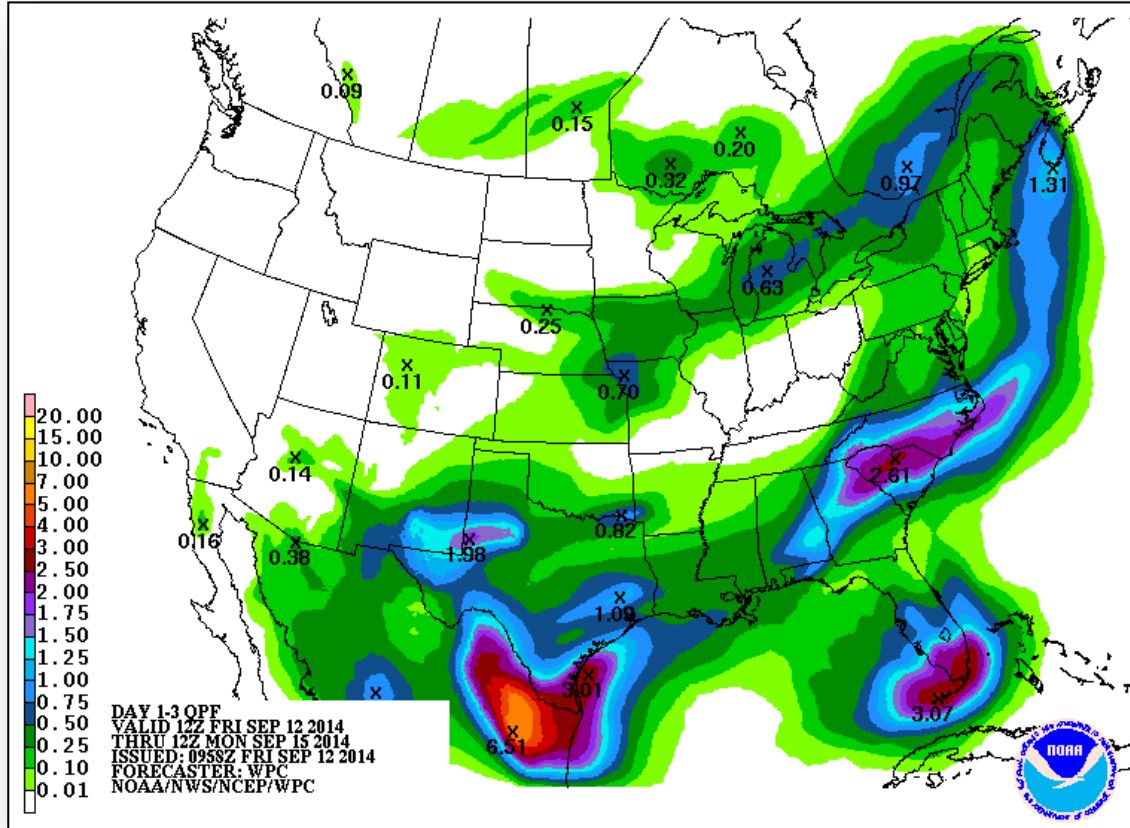
# Active Watches/Warnings



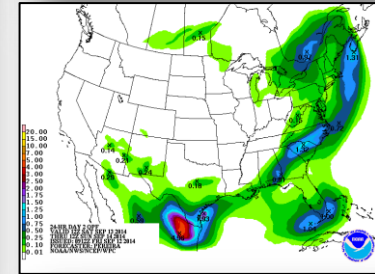
# Precipitation Forecast – 3 Day



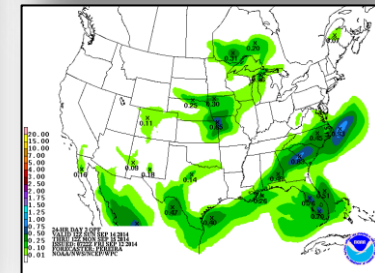
FEMA



Day 1



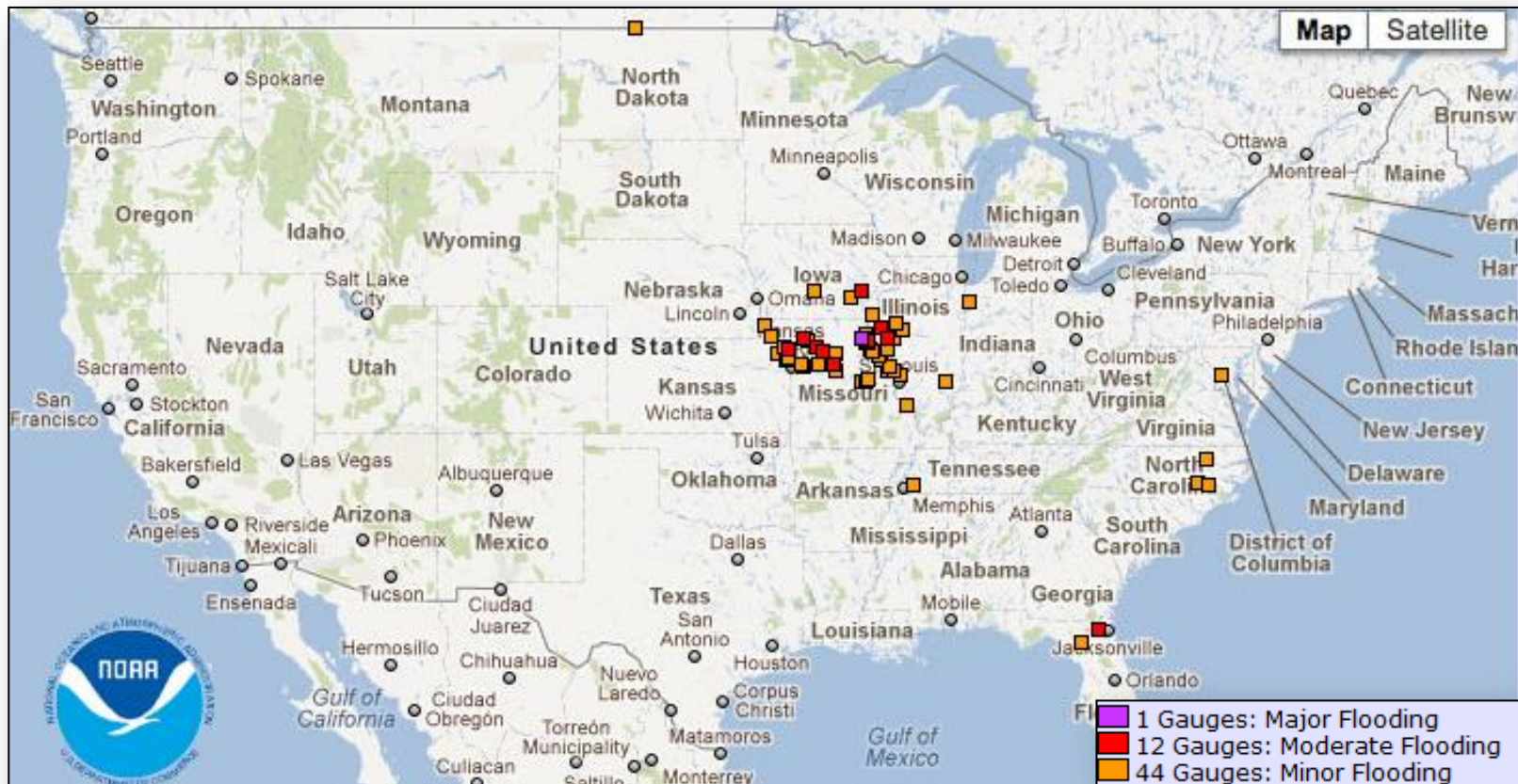
Day 2



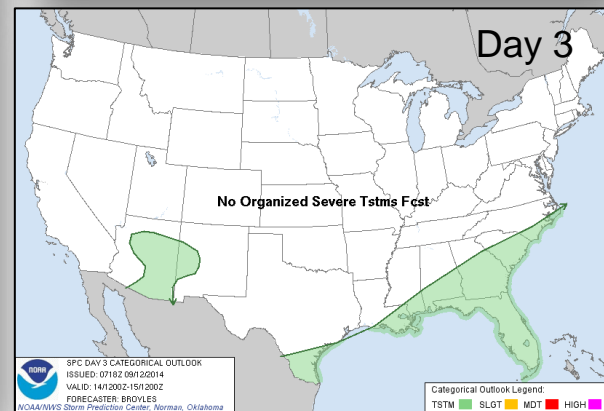
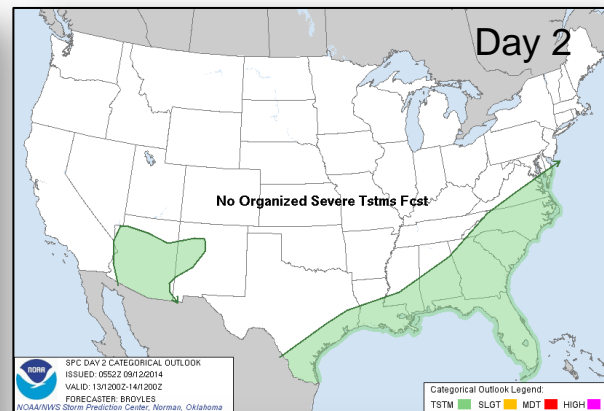
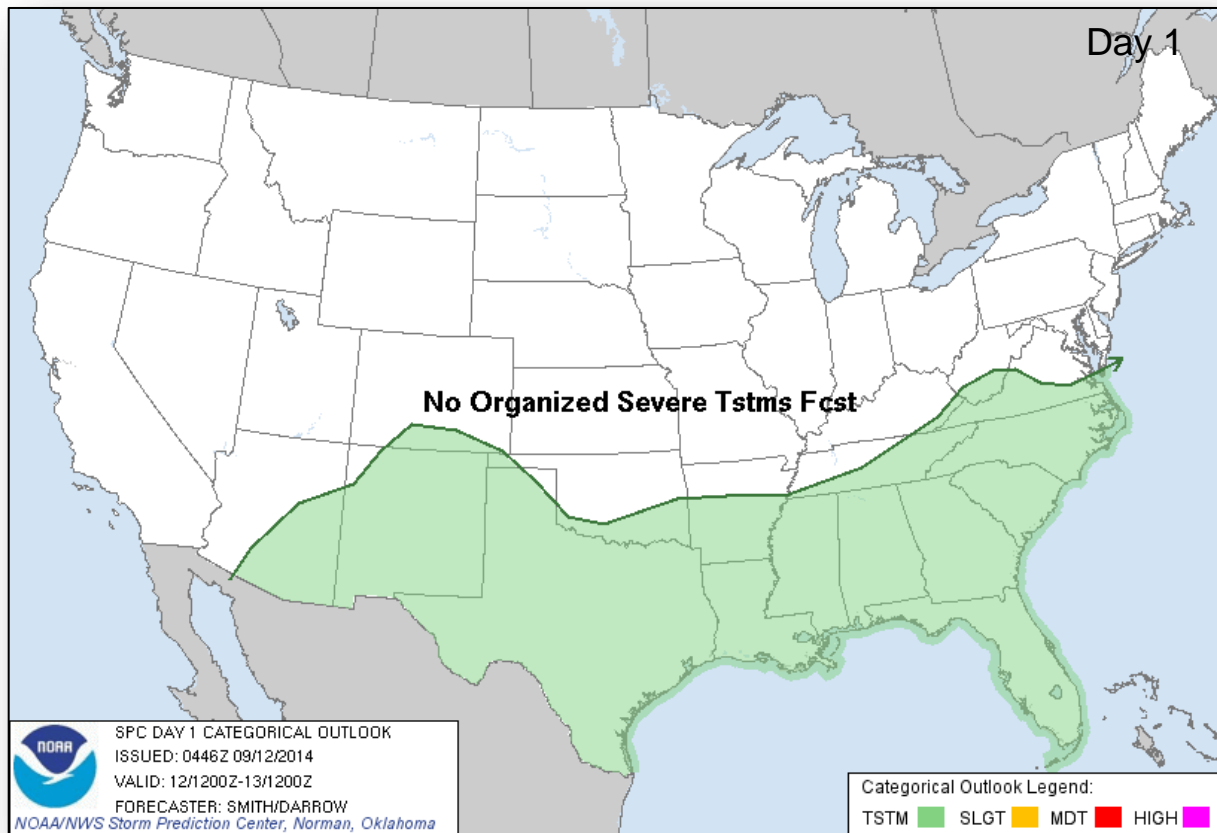
Day 3



# River Forecast

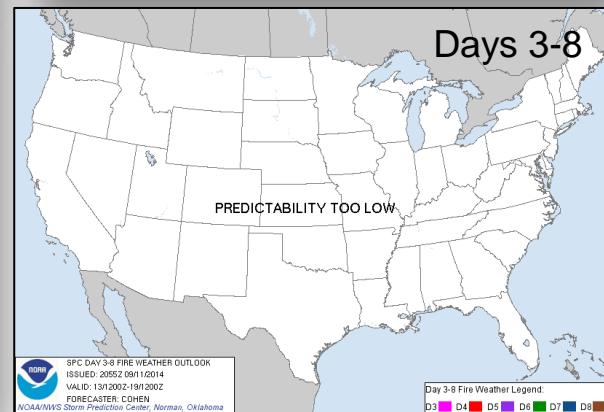
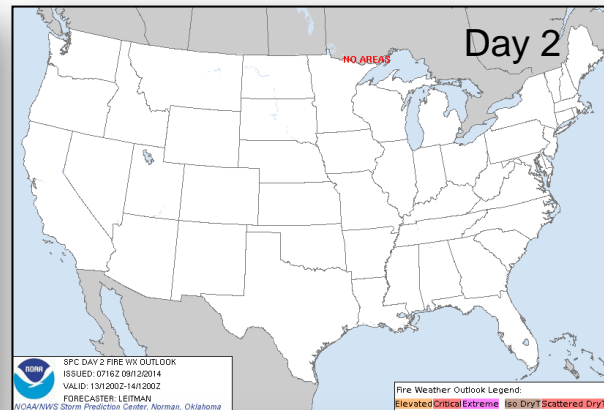
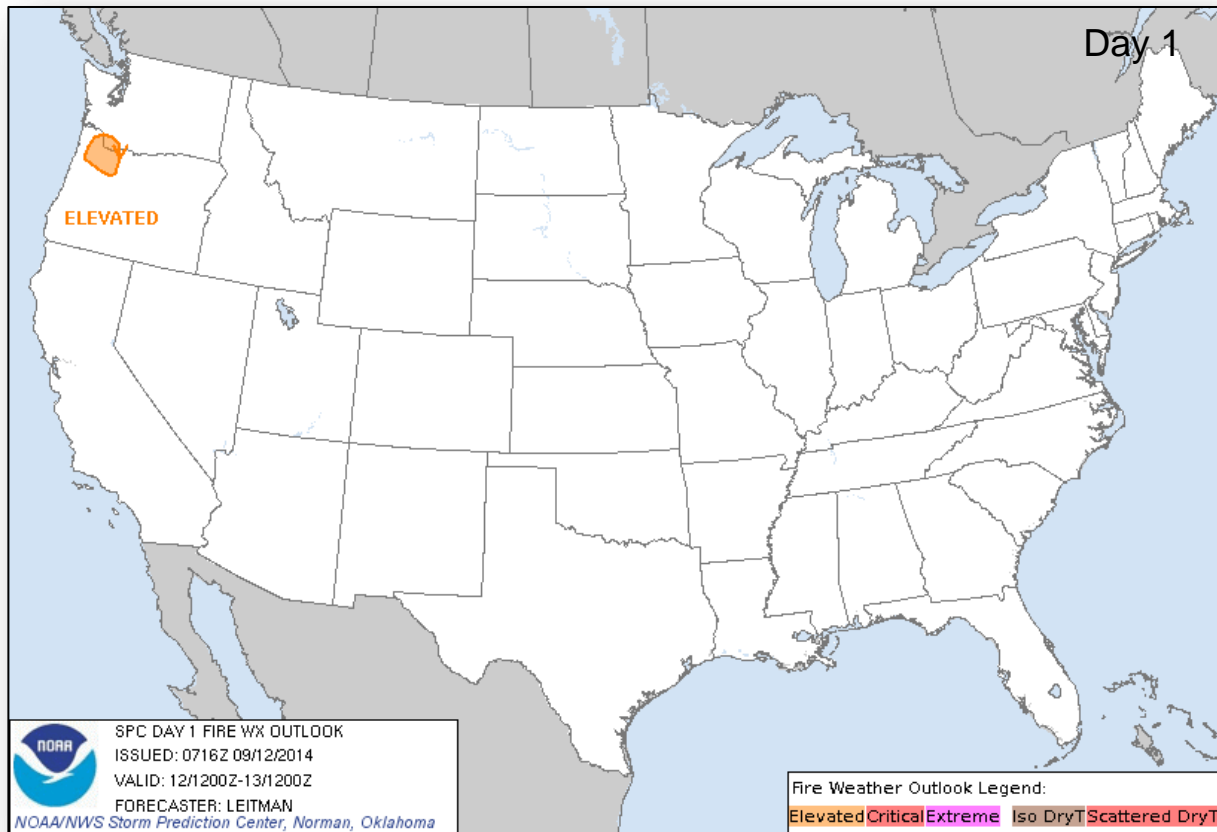


# Convective Outlook, Days 1 – 3

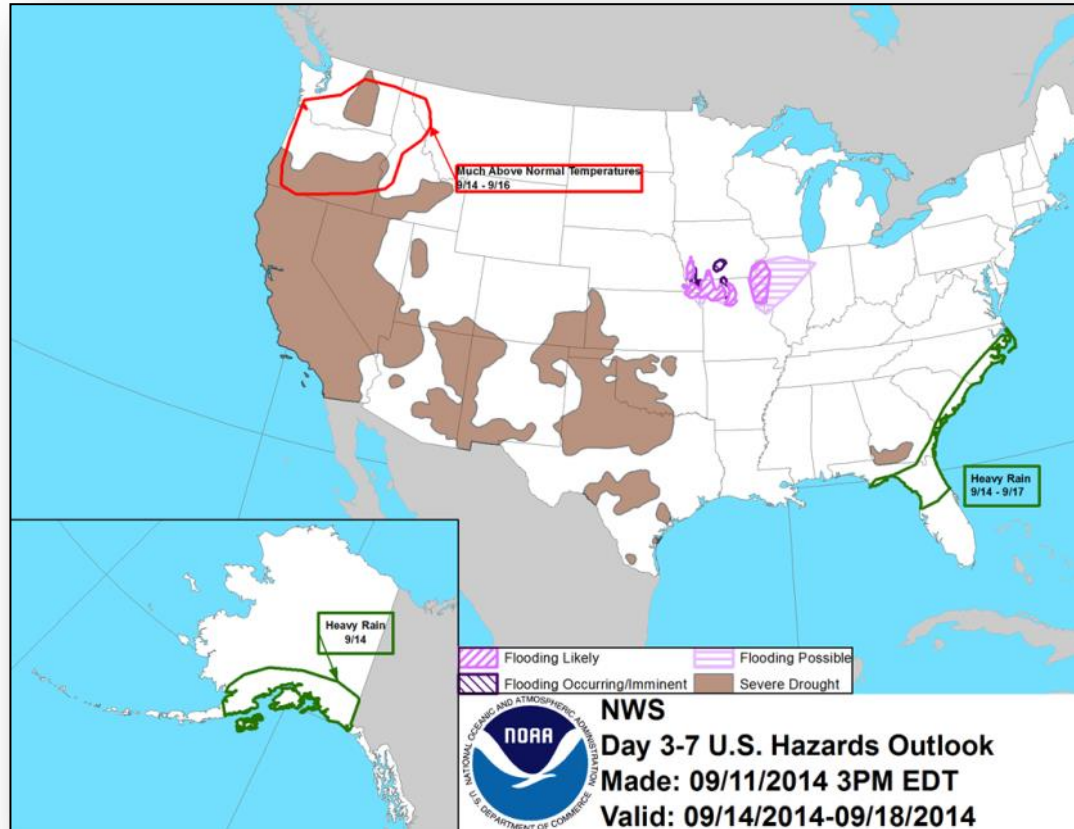




# Fire Weather Outlook, Days 1 – 8



# Hazard Outlook: September 14 – 18



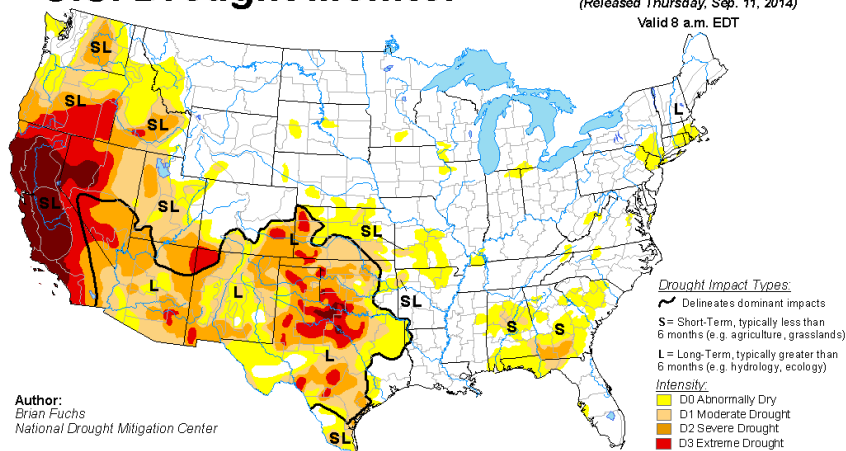
# U.S. Drought Monitor



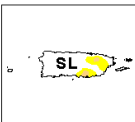
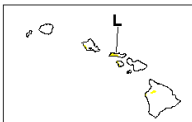
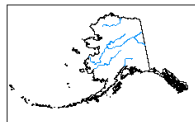
FEMA

## U.S. Drought Monitor

September 9, 2014  
(Released Thursday, Sep. 11, 2014)  
Valid 8 a.m. EDT

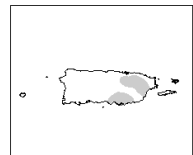
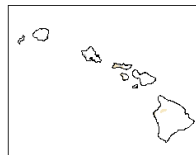
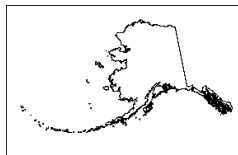
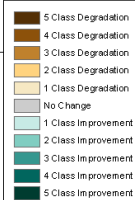
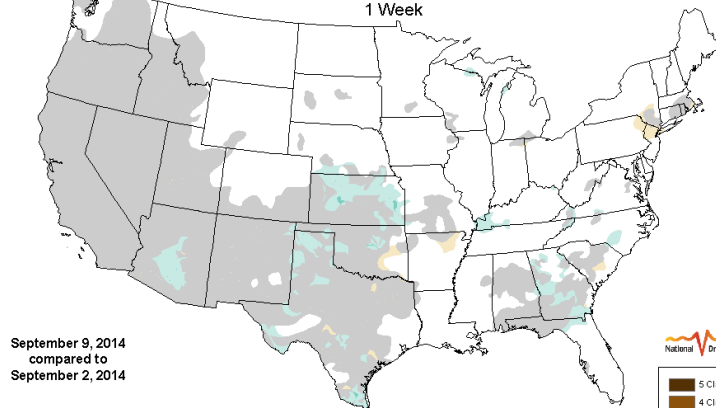


Author:  
Brian Fuchs  
National Drought Mitigation Center



<http://droughtmonitor.unl.edu/>

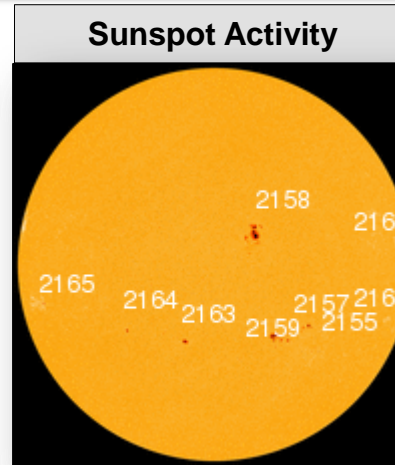
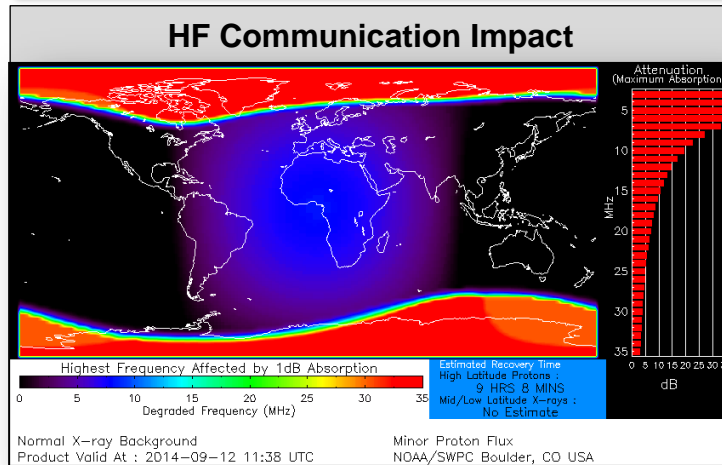
## U.S. Drought Monitor Class Change 1 Week



<http://droughtmonitor.unl.edu>

# Space Weather

NOAA Scales Activity (Range: 1/minor to 5/extreme)	Past 24 Hours	Current	Next 24 Hours
Space Weather Activity:	Minor	Minor	Strong
• Geomagnetic Storms	None	G1	G3
• Solar Radiation Storms	S1	S1	S1
• Radio Blackouts	R1	None	R1



# FEMA Readiness – Deployable Teams/Assets



Deployable Teams/Assets									
Resource	Status	Total	Available		Partially Available	Not Available	Detailed Deployed Activated	Comments	Rating Criterion
FCO		39	18	46%	0	1	20		OFDC Readiness: FCO   Green   Yellow   Red Type 1   3+       2       1 Type 2   4+       3       2 Type 3   4       3       2
FDRC		10	6	60%	0	0	4		FDRC   3       2       1
US&R		28	26	93%	1	1	0	<ul style="list-style-type: none"> <li>NM-TF1 (Red for personnel shortages)</li> <li>CA-TF1 (Yellow for logistics &amp; management)</li> </ul>	<ul style="list-style-type: none"> <li>Green = Available/FMC</li> <li>Yellow = Available/PMC</li> <li>Red = Out-of-Service</li> <li>Blue = Assigned/Deployed</li> </ul>
National IMAT		3	3	100%	0	0	0		<ul style="list-style-type: none"> <li>Green: 3 avail</li> <li>Yellow: 1-2 avail</li> <li>Red: 0 avail (<i>Individual N-IMAT red if 50% of Section Chiefs and/or Team Leader is unavailable for deployment.</i>)</li> </ul>
Regional IMAT		13	5	38%	3	4	1	<u>Partially Mission Capable (PMC):</u> <ul style="list-style-type: none"> <li>Region II, III, VI</li> </ul> <ul style="list-style-type: none"> <li><u>Not Mission Capable (NMC):</u></li> <li>Region V, VII, IX (Team 1), VI (Team 2)</li> </ul> <u>Deployed</u> <ul style="list-style-type: none"> <li>Region X to WA</li> </ul>	<ul style="list-style-type: none"> <li>Green: 7 or more avail</li> <li>Yellow: 4 - 6 teams available</li> <li>Red: &gt; 8 teams deployed/unavailable</li> </ul> <p><i>R-IMAT also red if TL Ops/Log Chief is unavailable and has no qualified replacement.</i></p>
MCOV		60	55	92%	0	5	0		<ul style="list-style-type: none"> <li>Green = 80 – 100% avail</li> <li>Yellow = 60 – 79% avail</li> <li>Red = 59% or below avail</li> <li>Readiness remains 95%</li> </ul>

# FEMA Readiness – National/Regional Teams



National/Regional Teams									
Resource	Status	Total	Available		Partially Available	Not Available	Deployed/ Activated	Comments	Rating Criterion
NWC		5	5	100%	0	0	24/7		• Green = FMC • Yellow = PMC • Red = NMC
NRCC		2	344	89%	0	44	Not Activated		
HLT		1	N/A	N/A	0	1	Activated		
DEST							Not Activated		
RRCCs		10	10	100%	0	0	None		
RWCs/MOCs		10	10	100%	0	0	24/7	Region III RWC at Enhanced Watch (days only) thru Sept 14 for Star Spangled Spectacular, MD	





# FEMA

**FEMA's mission is to support our citizens and first responders to ensure that as a nation we work together to build, sustain, and improve our capability to prepare for, protect against, respond to, recover from, and mitigate all hazards.**