

The Disaster Center is dedicated to the idea that disaster mitigation is cost effective and individuals pursuing their own interest are the greatest potential force for disaster reduction.

Please consider making a small donation to the Disaster Center



When disaster mitigation is cost effective, we are on the road to bringing disasters to an end.



# **FEMA**

## **Daily Operations Briefing**

**Saturday, September 13, 2014**

**8:30 a.m. EDT**

# Significant Activity: Sep 12 – 13



**Significant Events:** None

## **Tropical Activity:**

- Atlantic – Tropical Storm Edouard; Disturbance 1 (Low); Disturbance 2 (Low); Disturbance 3 (Low)
- Eastern Pacific – Hurricane Odile; Tropical Depression Sixteen-E; Disturbance 1 (Low)
- Central Pacific – No tropical cyclones expected through late Sunday night

## **Significant Weather:**

- Flash flooding possible – Southern Texas & the Carolinas
- Elevated Fire Weather Areas: None; Red Flag Warnings: WA & OR
- Space Weather: Past 24 hours – Strong; G3 geomagnetic storms & S2 solar radiation storms; Next 24 hours – Strong; G3 geomagnetic storms & R1 radio blackouts predicted

**FEMA Readiness:** No activity

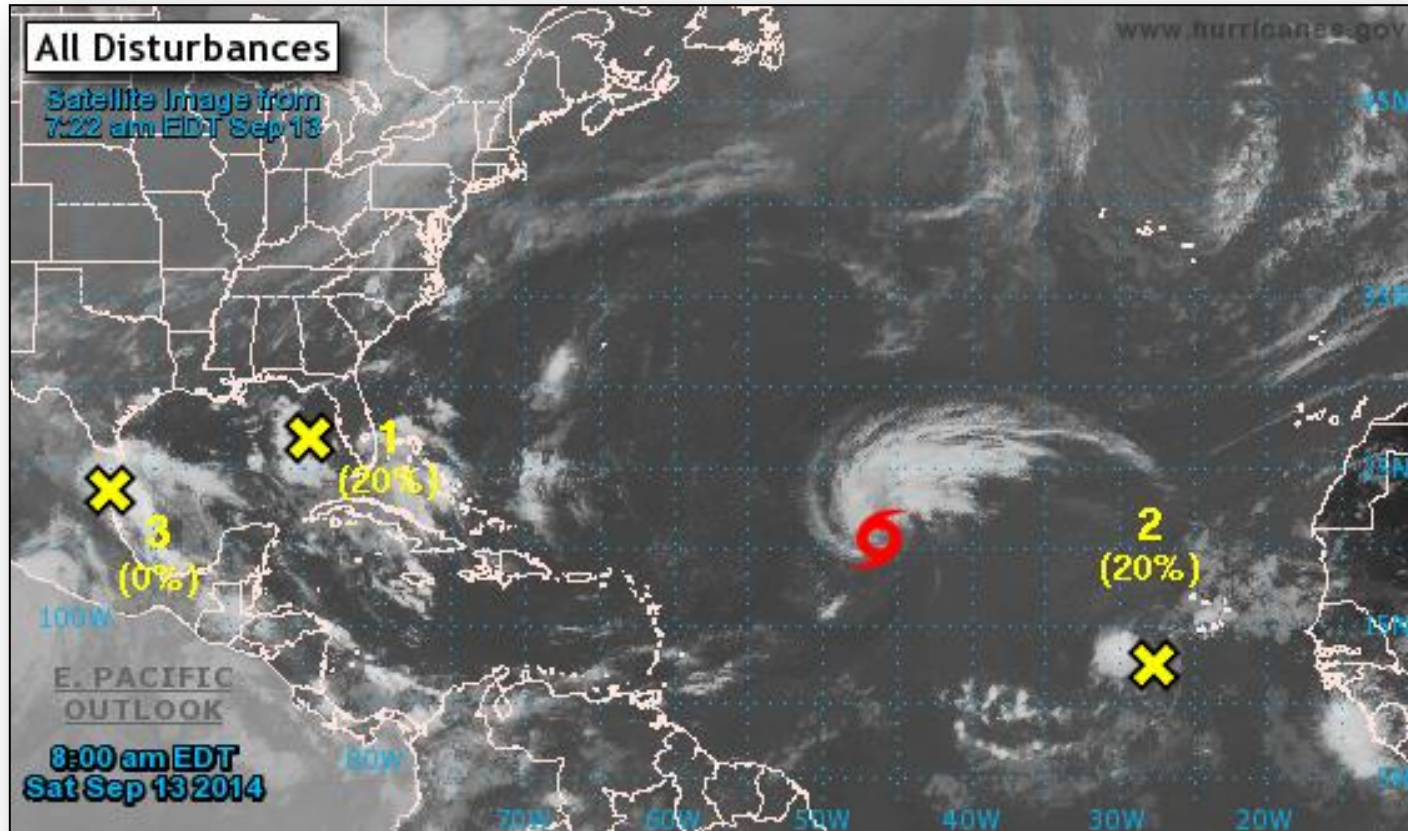
## **Declaration Activity:**

- Amendment No. 1 approved for FEMA-4188-DR-Washington
- Major Disaster Declaration approved for Hawaii (FEMA-4194-DR-HI)

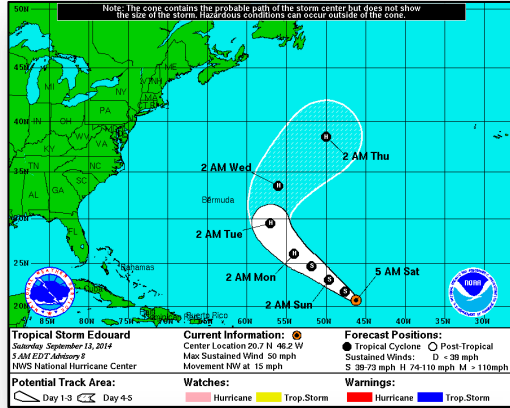
# 2-Day Tropical Outlook – Atlantic



FEMA

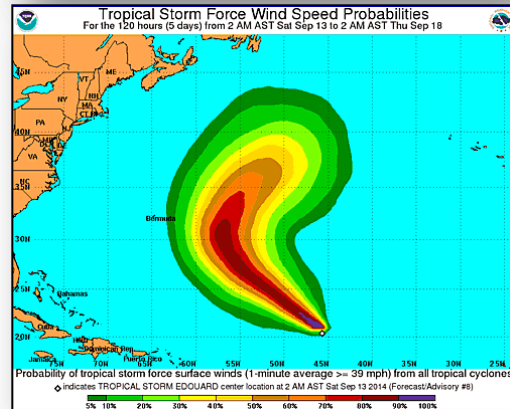


# Tropical Storm Edouard – Atlantic

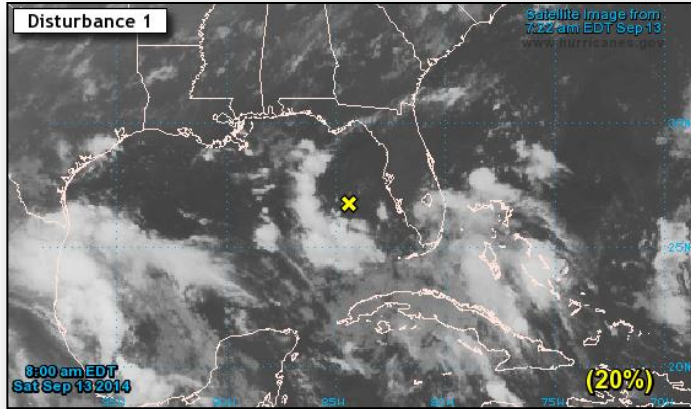


## Tropical Storm Edouard (as of 5:00 a.m. EDT)

- Located 1,115 miles ENE of Northern Leeward Islands
- Moving NW at 15 mph; this motion expected to continue for the next couple of days
- Maximum sustained winds 50 mph
- Some strengthening is forecast during the next 48 hours
- Edouard is expected to become a hurricane late Sunday or early Monday
- Tropical storm force winds extend 70 miles

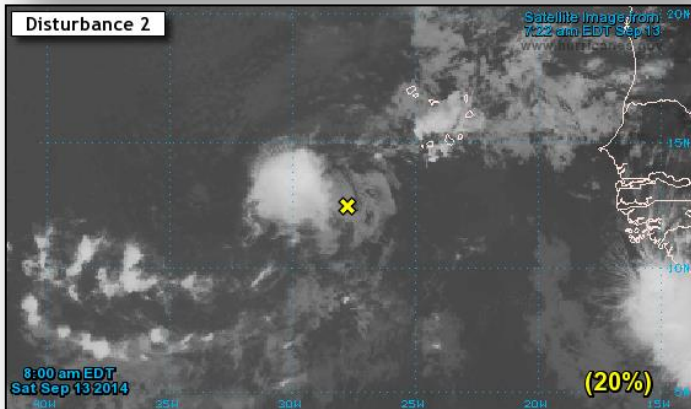


# 2-Day Tropical Outlook – Atlantic



## Disturbance 1 (as of 8:00 a.m. EDT)

- Located over the southeastern Gulf of Mexico
- Upper-level winds are not favorable for significant development; the system is moving westward during the next few days
- Low will bring locally heavy rains to portions of FL through today
- Formation chance:
  - Next 48 hours: Low (20%)
  - Next 5 days: Medium (30%)

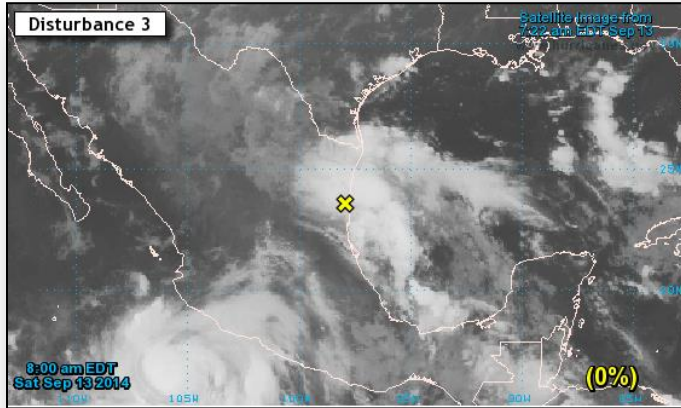


## Disturbance 2 (as of 8:00 a.m. EDT)

- Located southwest of Cape Verde Islands has become a little less organized
- Some development is still possible before it moves WNW into an area unfavorable for tropical cyclone development
- Moving W to WNW at 10 mph
- Formation chance:
  - Next 48 hours: Low (20%)
  - Next 5 days: Low (20%)



# 2-Day Tropical Outlook – Atlantic



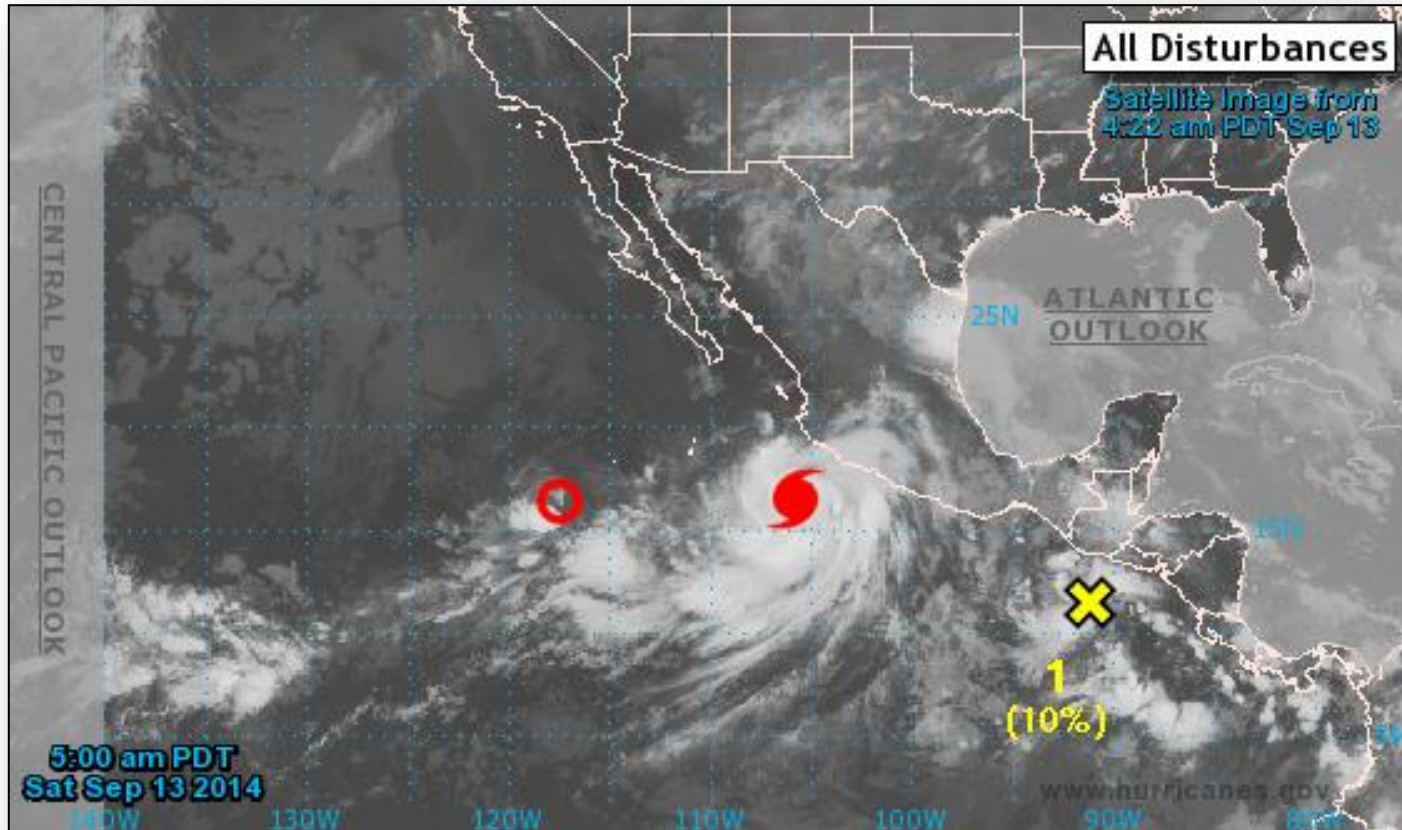
## Disturbance 3 (as of 8:00 a.m. EDT)

- Low pressure associated with a tropical wave over the western Gulf of Mexico is gradually moving inland over northeastern Mexico
- Additional development is not expected
- Locally heavy rains and gusty winds are likely to continue over portions of eastern Mexico today and extreme southern Texas
- Formation chance:
  - Next 48 hours: Low (near 0%)
  - Next 5 days: Low (near 0%)

# 2-Day Tropical Outlook – Eastern Pacific

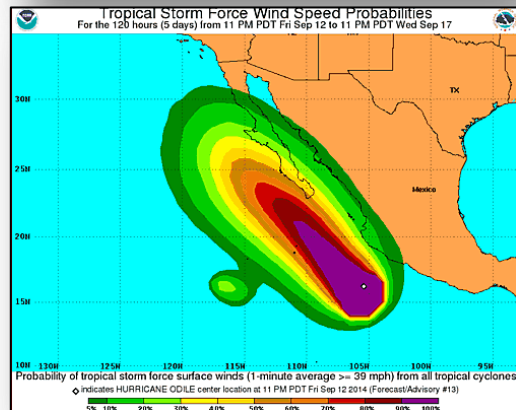
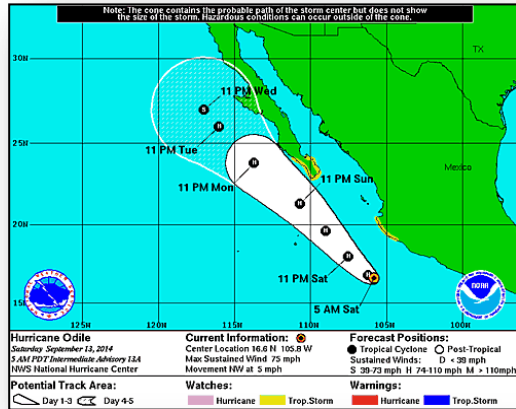


FEMA





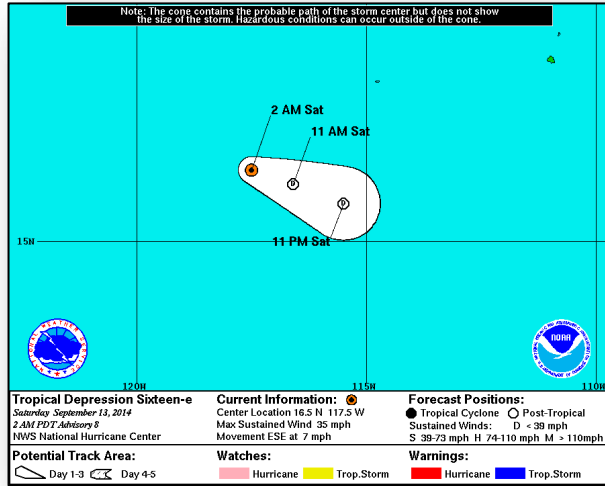
# Eastern Pacific-Hurricane Odile



## Hurricane Odile (as of 8:00 a.m. EDT)

- Located 195 miles SSW of Manzanillo, Mexico
- Moving NW near 5 mph
- A faster forward speed is expected during the next 48 hours
- On forecast track, center will remain well offshore of southwestern coast of Mexico through tonight
- Maximum sustained winds 75 mph
- Hurricane-Force winds extend 25 miles
- Tropical Storm-force winds extend 205 miles
- No watches or warnings in effect for the U.S.

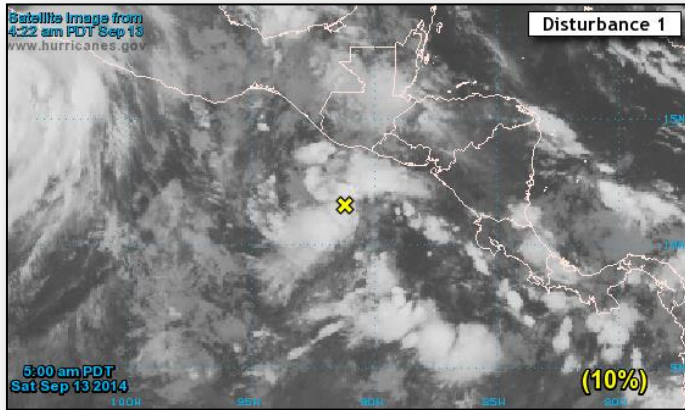
# Tropical Depression 16E – Eastern Pacific



## Tropical Depression Sixteen-E (as of 5:00 a.m. EDT)

- Located 665 miles SW of southern tip of Baja California Mexico
- Moving ESE at 7 mph
- This motion is expected to continue until the system dissipates on Sunday
- Maximum sustained winds 35 mph
- Expected to become remnant low later today

# 2-Day Tropical Outlook – Eastern Pacific



## Disturbance 3 (as of 8:00 a.m. EDT)

- Low pressure located more than 100 miles south of Guatemala is producing disorganized showers and thunderstorms
- Environmental conditions expected to be conducive for gradual development over the next several days
- Drifting toward the WNW and remains offshore of the coasts of Guatemala and Mexico
- Formation chance:
  - Next 48 hours: Low (10%)
  - Next 5 days: High (70%)

# Wildfire Summary



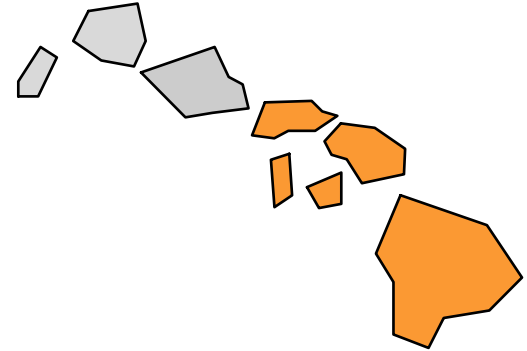
Fire Name (County)	FMAG #	Acres Burned	% Contained Est. Containment date	Evacuations (Residents)	Structures Threatened	Structures Destroyed	Fatalities / Injuries
California							
Happy Camp Complex (FINAL) (Siskiyou County)	Not requested	108,240 (+240)	50 (+5)% 9/20/14	Mandatory	138 (-605) 91 homes (-604)	6 (2 homes)	0 / 12

# Major Disaster Declaration – Hawaii



## **FEMA-4194-DR-HI**

- Approved September 12, 2014
- For Tropical Storm Iselle during the period August 7–9, 2014
- Provides:
  - Public Assistance for Hawaii and Maui counties
  - Hazard Mitigation statewide
  - FCO is Kenneth K. Suiso



 Declared PA Counties

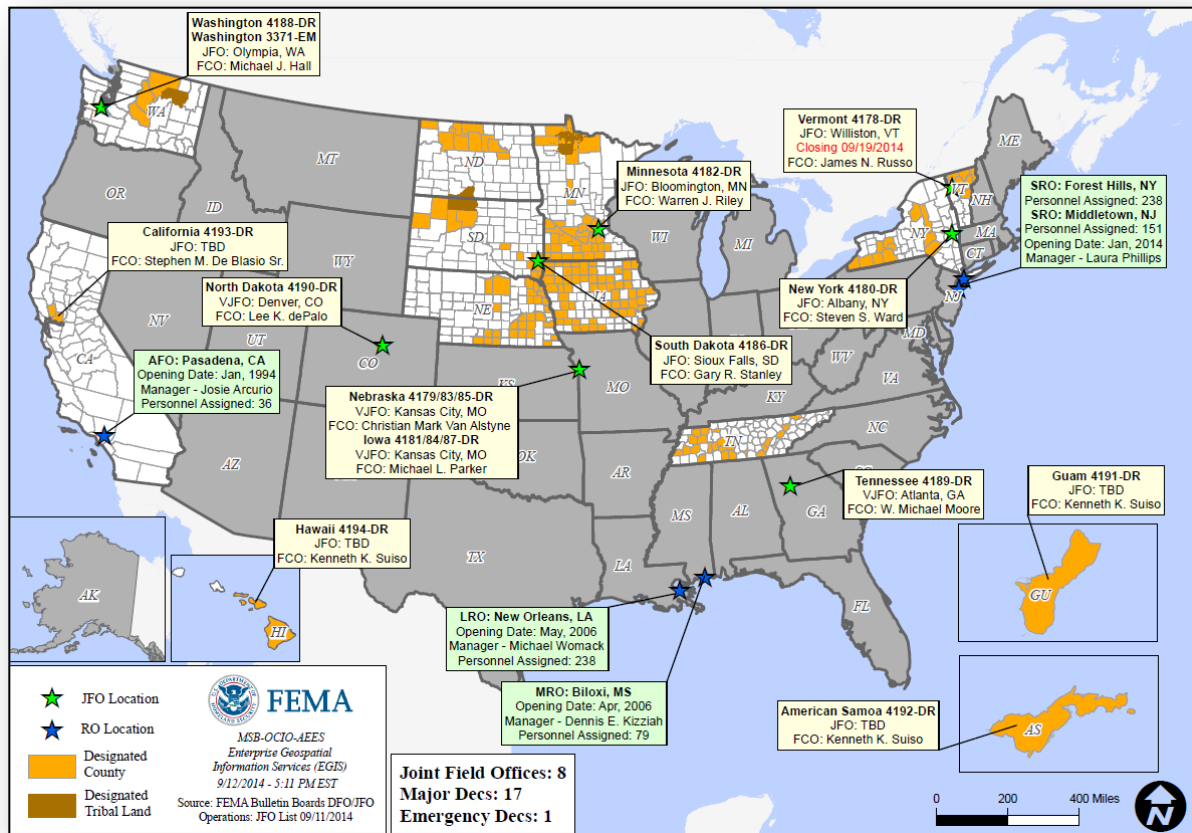
# Disaster Amendments



Amendment	Effective Date	Action
Amendment No. 1 to FEMA-4188-DR-WA	September 12, 2014	Adds Kittitas County for Public Assistance



# Open Field Offices as of September 13



# Joint Preliminary Damage Assessments

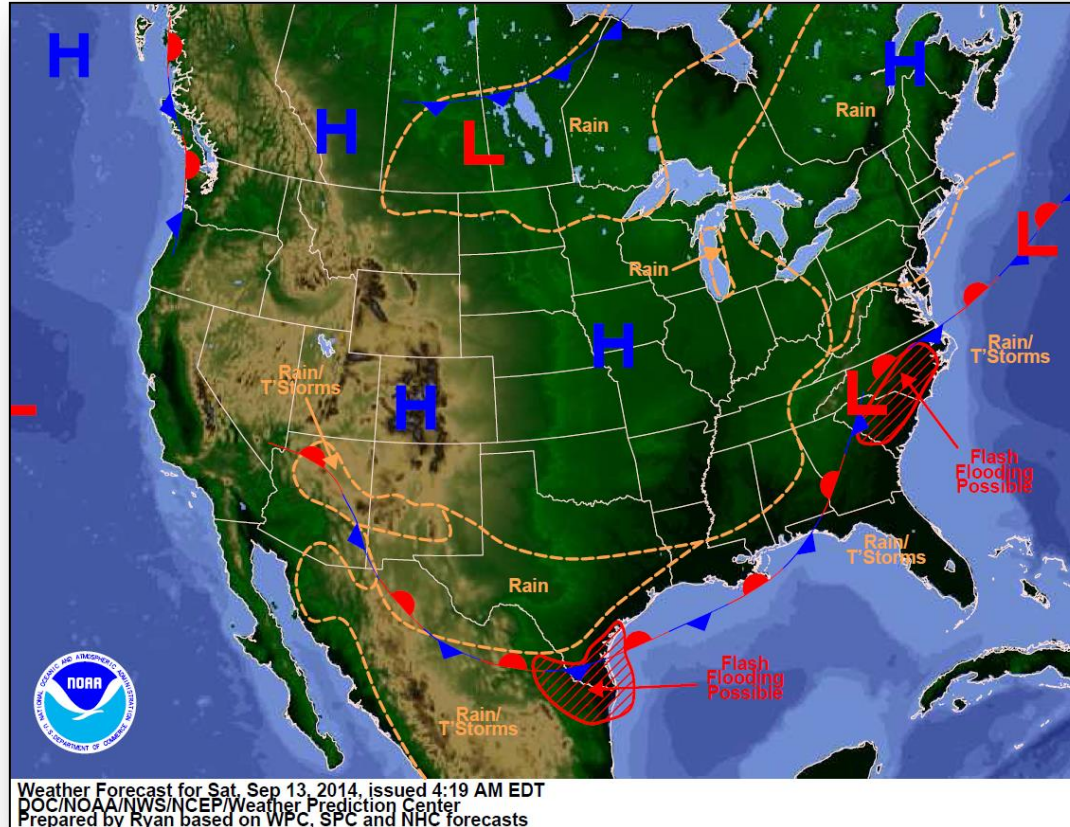


Region	State / Location	Event	IA/PA	Number of Counties		Start – End
				Requested	Complete	
III	MD	Severe Storms August 12, 2014	PA	2	0	9/10 – TBD
IV	KY	Severe Storms, Flash Flooding, Flooding, Slides, & Mudslides August 18 – 24, 2014	IA	1	1 (+1)	9/10 – 9/12
			PA	4	2 (+2)	9/10 – TBD
VI	NM	Severe Storms & Flooding July 27 – August 5, 2014	PA	8	0	9/10 – TBD
VIII	MT	Severe Storms & Flooding August 21 – 28, 2014	PA	6	0	9/22 – 9/26
VIII	ND	Severe Storms & Flooding August 15 – 25, 2014	PA	5	0	9/15 – 9/19

# National Weather Forecast

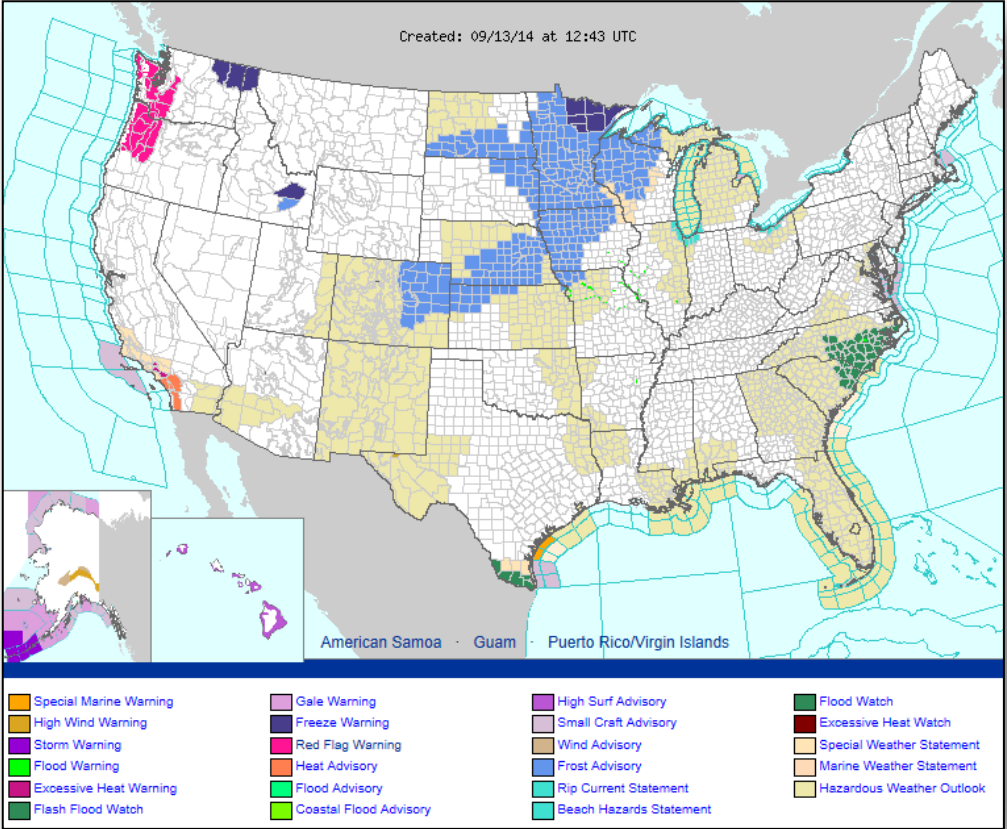


FEMA



Weather Forecast for Sat, Sep 13, 2014, issued 4:19 AM EDT  
DOC/NOAA/NWS/NCEP/Weather Prediction Center  
Prepared by Ryan based on WPC, SPC and NHC forecasts

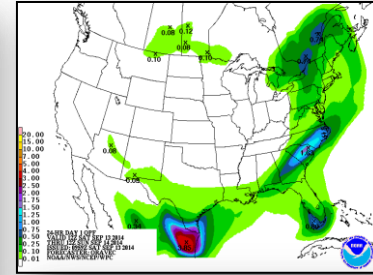
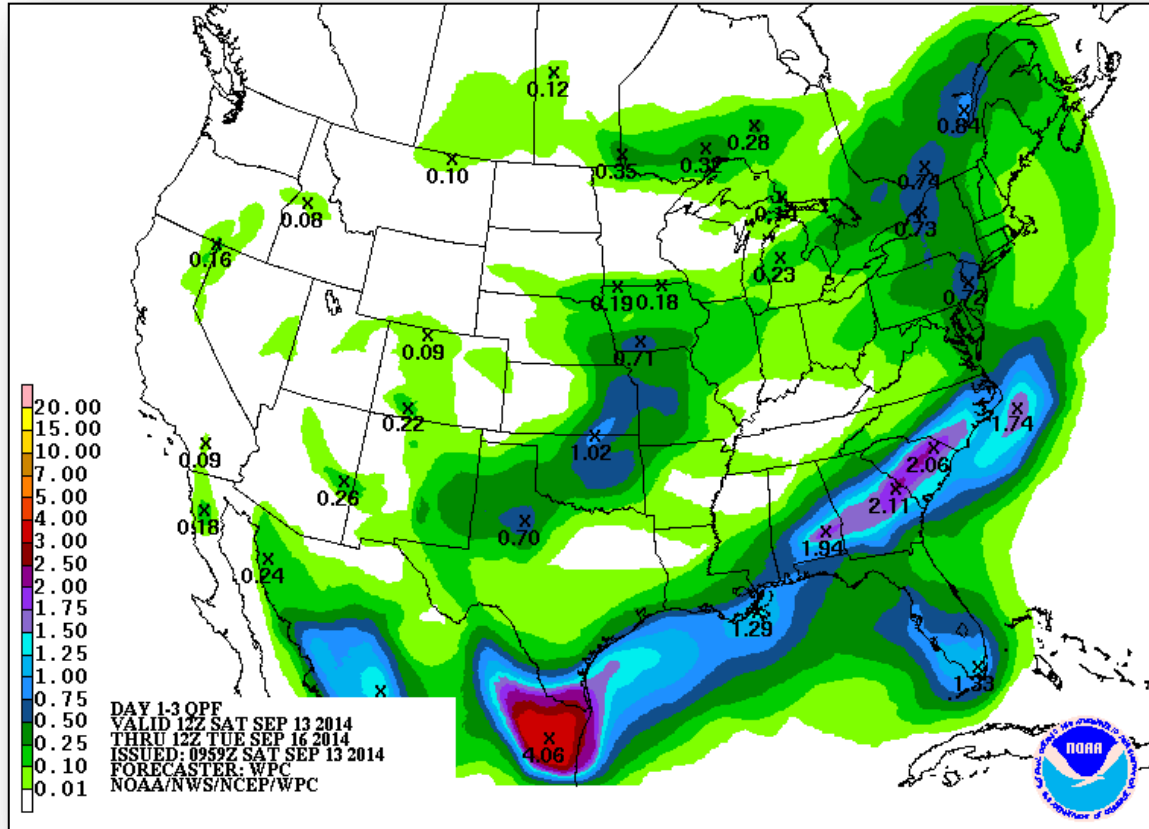
# Active Watches/Warnings



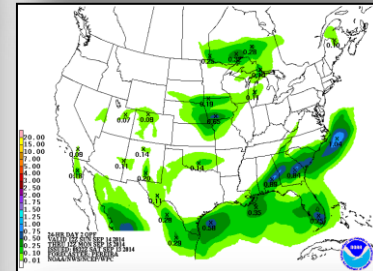
# Precipitation Forecast – 3 Day



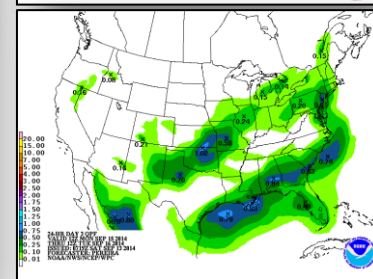
FEMA



Day 1



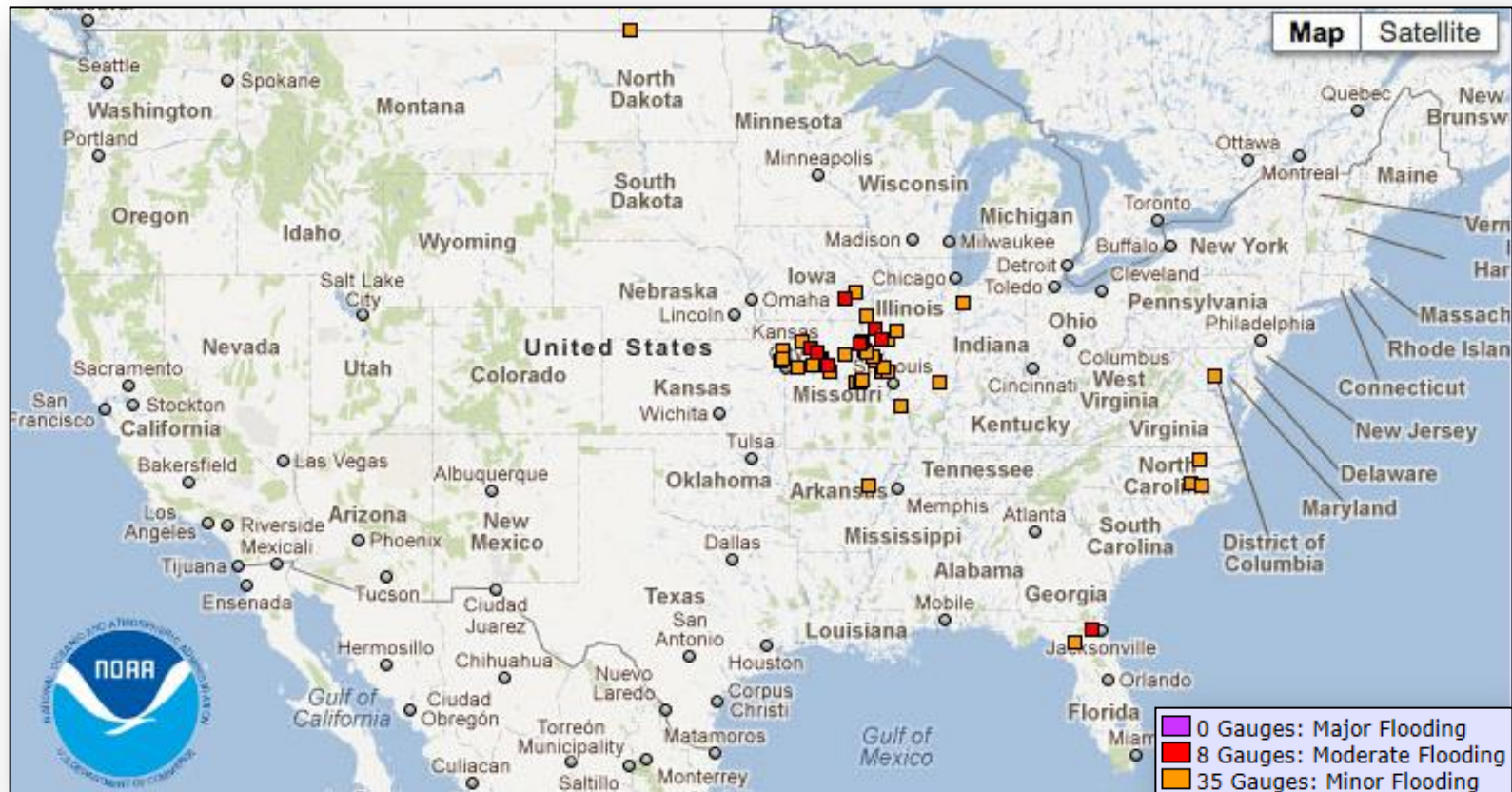
Day 2



Day 3

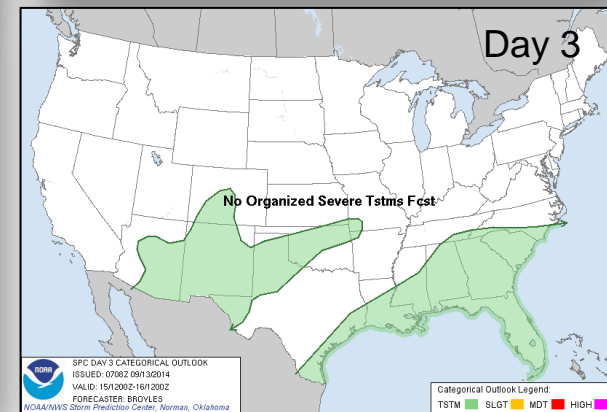
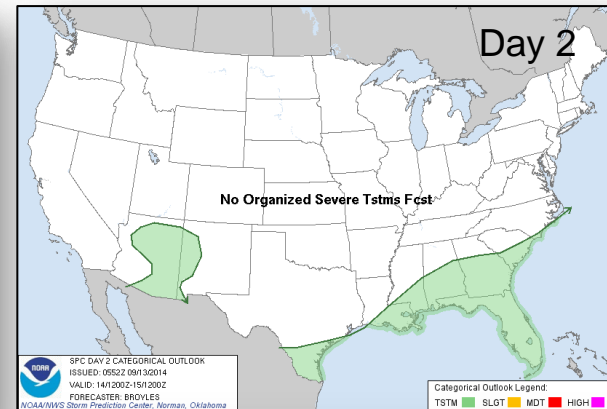
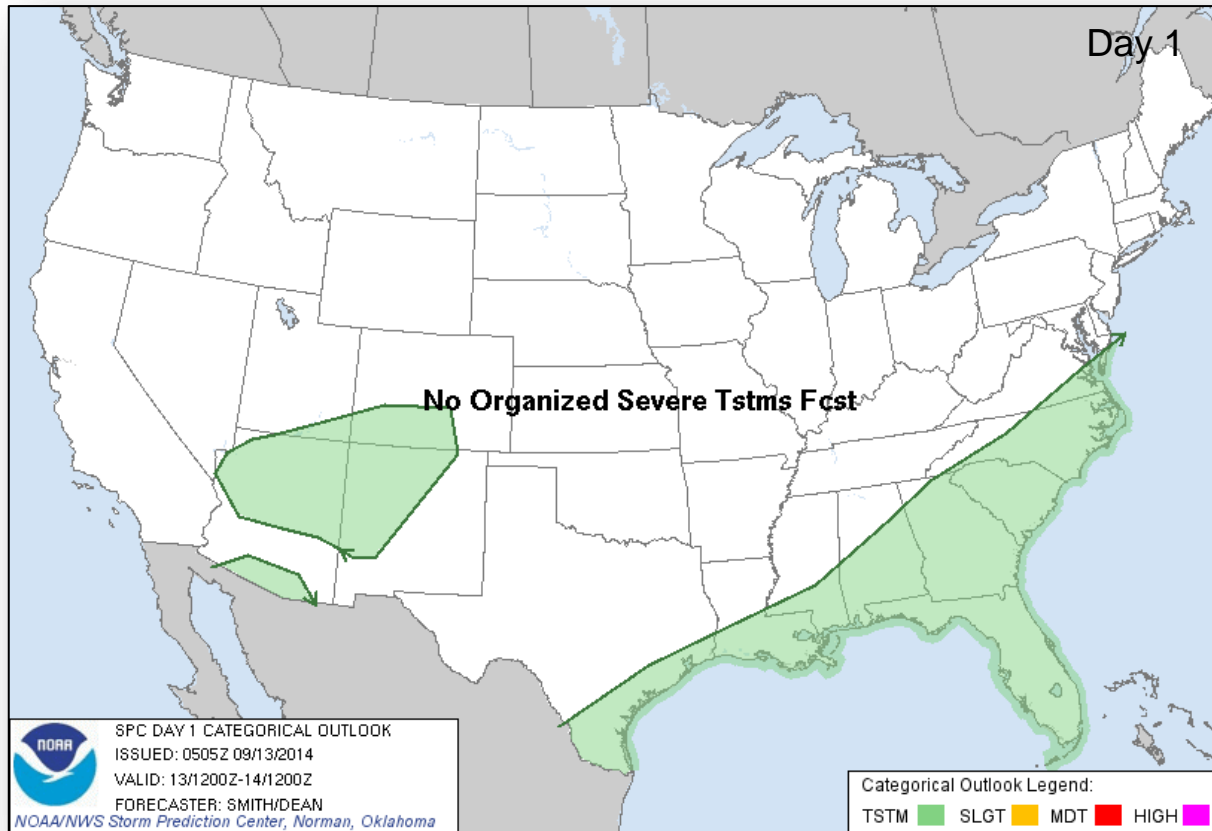


# River Forecast

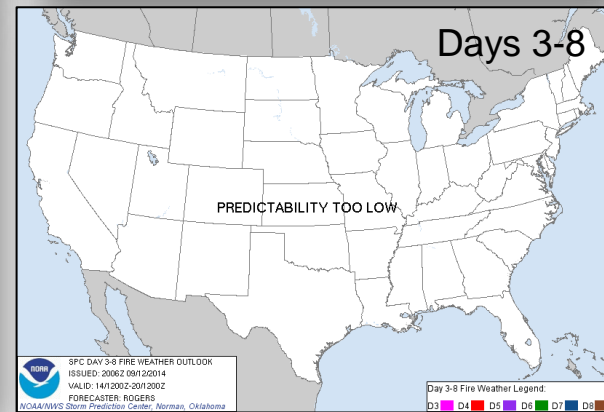
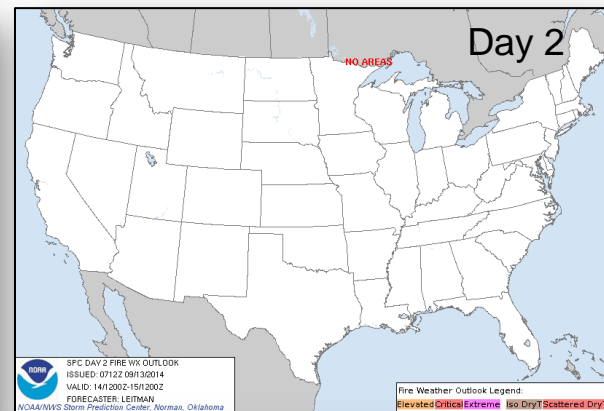
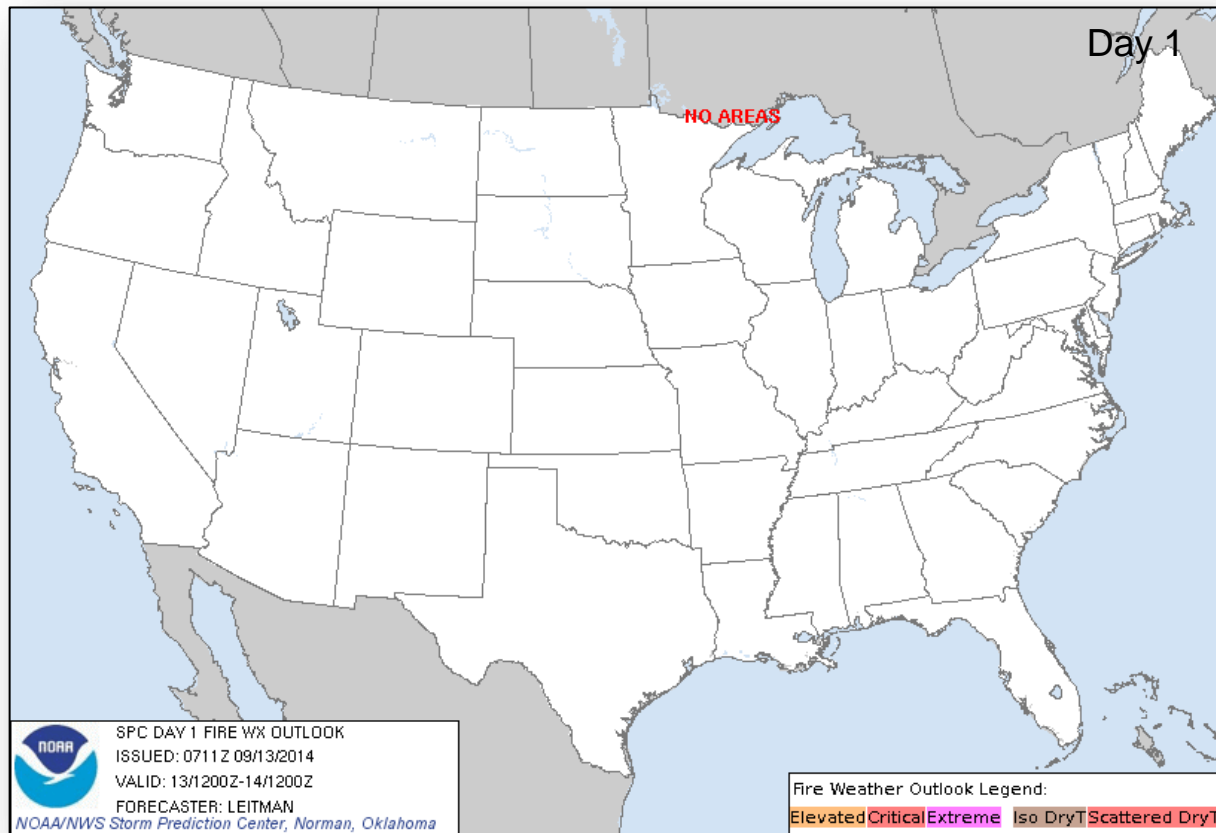




# Convective Outlook, Days 1 – 3



# Fire Weather Outlook, Days 1 – 8

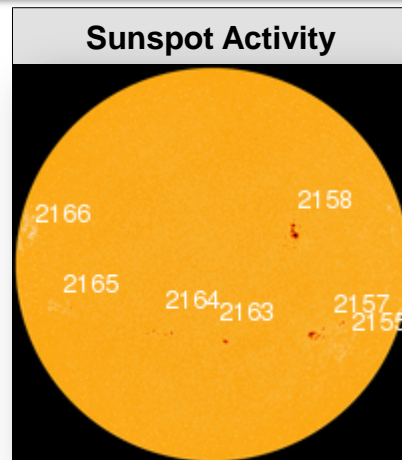
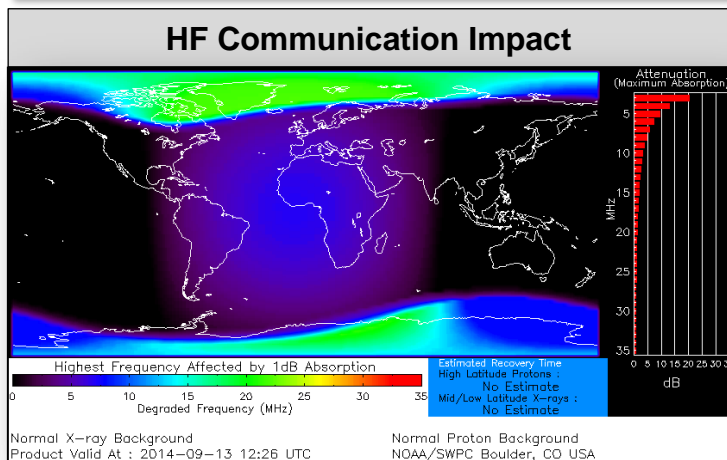


# Space Weather



FEMA

NOAA Scales Activity (Range: 1/minor to 5/extreme)	Past 24 Hours	Current	Next 24 Hours
Space Weather Activity:	Strong	Strong	Strong
• Geomagnetic Storms	G3	G3	G3
• Solar Radiation Storms	S2	S2	None
• Radio Blackouts	None	None	R1



# FEMA Readiness – Deployable Teams/Assets



Deployable Teams/Assets									
Resource	Status	Total	Available		Partially Available	Not Available	Detailed Deployed Activated	Comments	Rating Criterion
FCO		39	16	41%	0	1	22		OFDC Readiness: FCO    Green    Yellow    Red Type 1    3+            2            1 Type 2    4+            3            2 Type 3    4                3            2
FDRC		10	5	50%	0	0	5		FDRC    3            2            1
US&R		28	26	93%	1	1	0	<ul style="list-style-type: none"><li>NM-TF1 (Red for personnel shortages)</li><li>CA-TF1 (Yellow for logistics &amp; management)</li></ul>	<ul style="list-style-type: none"><li>Green = Available/FMC</li><li>Yellow = Available/PMC</li><li>Red    = Out-of-Service</li><li>Blue   = Assigned/Deployed</li></ul>
National IMAT		3	3	100%	0	0	0		<ul style="list-style-type: none"><li>Green: 3 avail</li><li>Yellow: 1-2 avail</li><li>Red: 0 avail (<i>Individual N-IMAT red if 50% of Section Chiefs and/or Team Leader is unavailable for deployment.</i>)</li></ul>
Regional IMAT		13	5	38%	3	4	1	<u>Partially Mission Capable (PMC):</u> <ul style="list-style-type: none"><li>Region II, III, VI</li><li><u>Not Mission Capable (NMC):</u><ul style="list-style-type: none"><li>Region V, VII, IX (Team 1), VI (Team 2)</li></ul></li><li><u>Deployed</u><ul style="list-style-type: none"><li>Region X to WA</li></ul></li></ul>	<ul style="list-style-type: none"><li>Green: 7 or more avail</li><li>Yellow: 4 - 6 teams available</li><li>Red: &gt; 8 teams deployed/unavailable</li></ul> <p><i>R-IMAT also red if TL Ops/Log Chief is unavailable and has no qualified replacement.</i></p>
MCOV		60	55	92%	0	5	0		<ul style="list-style-type: none"><li>Green = 80 – 100% avail</li><li>Yellow = 60 – 79% avail</li><li>Red = 59% or below avail</li><li>Readiness remains 95%</li></ul>

# FEMA Readiness – National/Regional Teams



National/Regional Teams									
Resource	Status	Total	Available		Partially Available	Not Available	Deployed/ Activated	Comments	Rating Criterion
NWC		5	5	100%	0	0	24/7		• Green = FMC • Yellow = PMC • Red = NMC
NRCC		2	344	89%	0	44	Not Activated		
HLT		1	N/A	N/A	0	1	Activated		
DEST							Not Activated		
RRCCs		10	10	100%	0	0	None		
RWCs/MOCs		10	10	100%	0	0	24/7		



# FEMA

**FEMA's mission is to support our citizens and first responders to ensure that as a nation we work together to build, sustain, and improve our capability to prepare for, protect against, respond to, recover from, and mitigate all hazards.**