

The Disaster Center is dedicated to the idea that disaster mitigation is cost effective and individuals pursuing their own interest are the greatest potential force for disaster reduction.

Please consider making a small donation to the Disaster Center



When disaster mitigation is cost effective, we are on the road to bringing disasters to an end.



# **FEMA**

## **Daily Operations Briefing**

**Sunday, September 13, 2015**

**8:30 a.m. EDT**

# Significant Activity: Sep 12-13



**Significant Events:** Valley Fire - CA

## **Tropical Activity:**

- Atlantic: Disturbance 1 (Medium-50%), Disturbance 2 (Low-10%), Disturbance 3 (Low-0%)
- Eastern Pacific: Disturbance 1 (Low-10%)
- Central Pacific: No tropical cyclones expected through Tuesday morning
- Western Pacific: No significant activity affecting U.S. territories

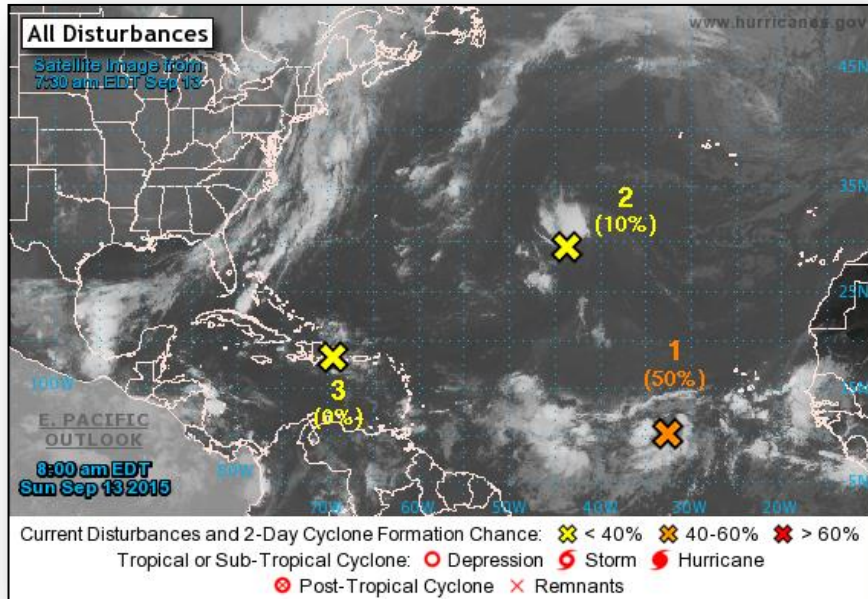
## **Significant Weather:**

- Rain/thunderstorms – Southern CA, Southwest, Southern Plains, and Southeast to Great Lakes and Northeast
- Red Flag Warnings – WA, OR, ID, WY & ND
- Critical/Elevated Fire Weather area – WA, OR, ID, MT, WY, & ND
- Space weather: Past 24 hours – none; next 24 hours – minor (G1) Geomagnetic Storms likely

**Earthquake Activity:** M6.6 – Gulf of California

**Declaration Activity:** Valley Fire – FEMA-XXXX-FM-CA

# 2-Day Tropical Outlook – Atlantic



## Disturbance 1: (as of 8:00 a.m. EDT)

- Tropical wave several hundred miles SW of Cape Verde Islands
- Moving WNW to NW
- Conditions conducive for development
- Tropical depression could form during next few days
- Formation chance through 48 hours: Medium (near 50%)
- Formation chance through 5 days: High (near 80%)

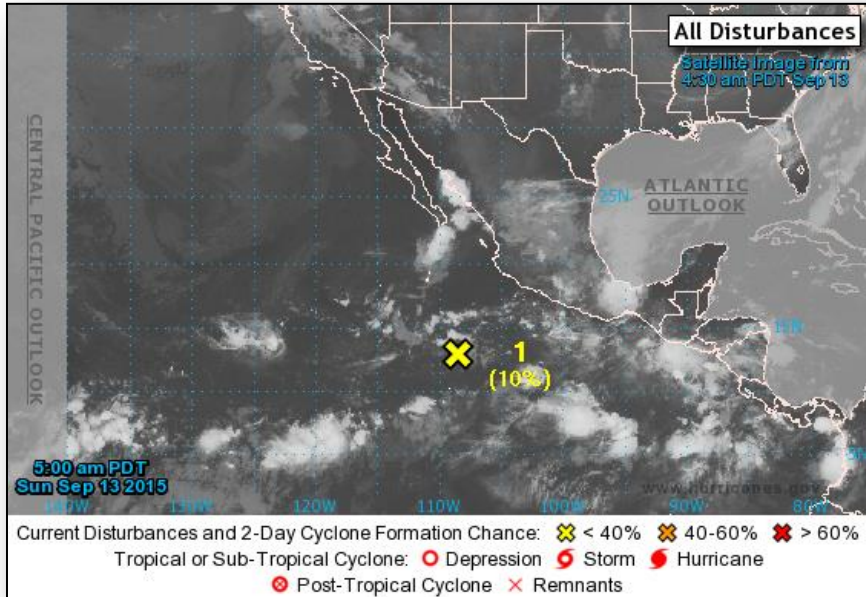
## Disturbance 2: (as of 8:00 a.m. EDT)

- Disorganized showers 975 miles SW of Azores
- Moving WNW to NW at 10 mph
- Conditions not conducive for development
- Formation chance through 48 hours: Low (near 10%)
- Formation chance through 5 days: Low (near 10%)

## Disturbance 3: (as of 8:00 a.m. EDT)

- Minimal showers over northeastern Caribbean Sea/Antilles
- Moving WNW at 15 mph
- Conditions not conducive for development
- Formation chance through 48 hours: Low (0%)
- Formation chance through 5 days: Low (0%)

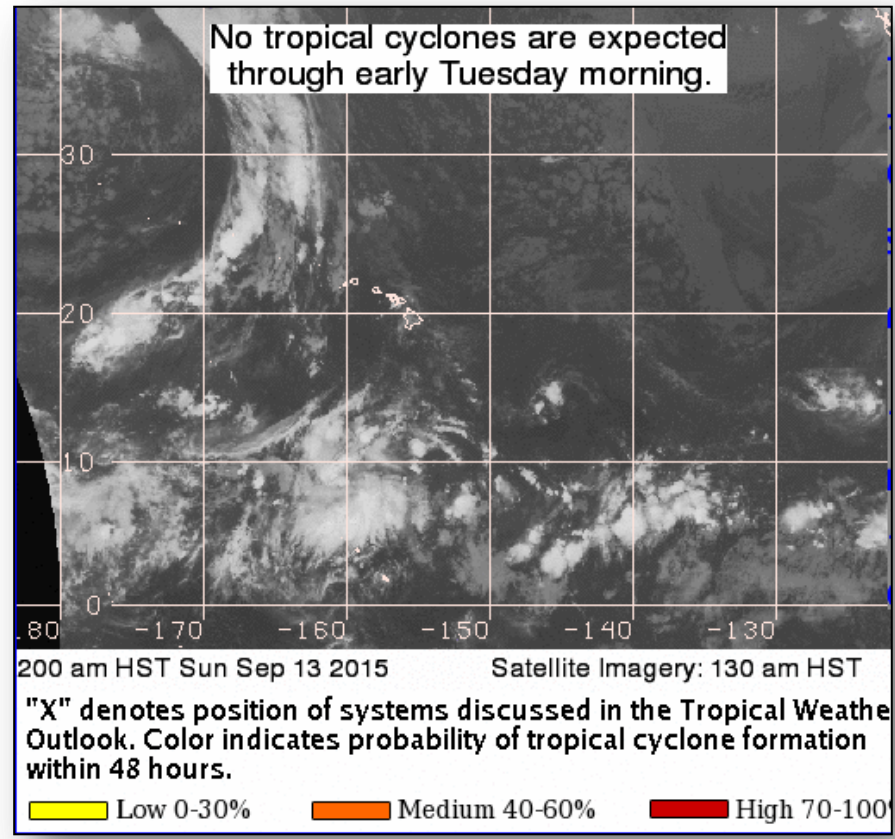
# 2 – Day Tropical Outlook – Eastern Pacific



## Disturbance 1: (as of 8:00 a.m. EDT)

- Area of disturbed weather 650 miles S of the southern tip of Baja California, Mexico
- Moving NW at 10 mph
- Some slow development possible over the next few days
- Formation chance through 48 hours: Low (10%)
- Formation chance through 5 days: Low (20%)

# 2 – Day Tropical Outlook – Central Pacific



# Valley Fire – CA



Fire Name (County)	Location	Acres burned	% Contained	FMAG	Evacuations	Structures Lost / Threatened	Fatalities / Injuries
Valley Fire (Lake & Napa)	in Cobb (pop. 1,300)	25,000	0%	FEMA-XXXX-FM-CA Approved Sep 12	Mandatory & Voluntary 8,000	Unknown/9,150 (9,000 homes)	0/4

## **Current Situation:**

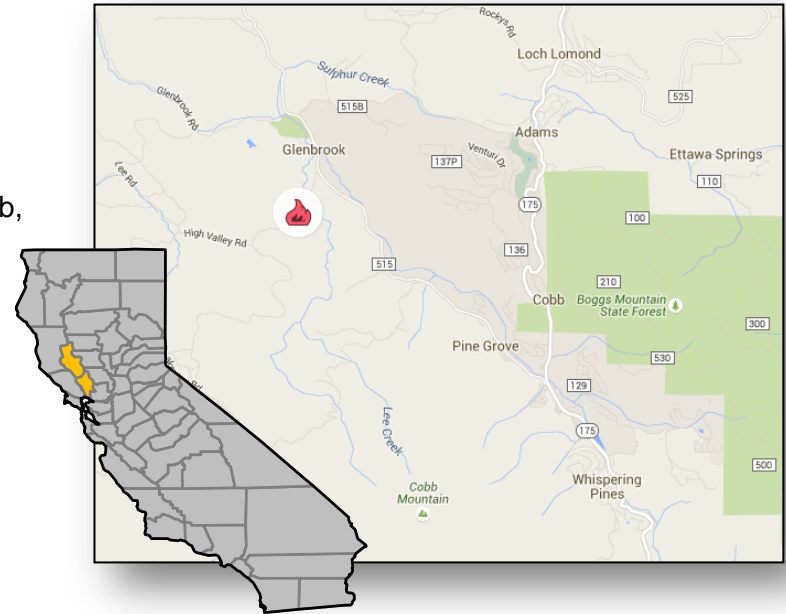
- Fire began September 12, 2015 around 4:30 pm EDT
- Burning in Lake and Napa Valley (Pop: 204,186)
- Very rapid growth ongoing; numerous road closures in effect
- Mandatory evacuations for approx. 8,000 residents in the communities of Cobb, Middletown, Hidden Valley Lake, Seigler Canyon & Loch Lomond
- Two evacuation centers established

## **State Local Response**

- Cal SOC and Cal OES Regional Emergency Operations Center (REOC) at Partial Activation
- Lake County EOC at Partial Activation

## **Federal Response**

- FEMA Region IX Response Watch Center (RWC) at Watch/Steady State
- Fire Management Assistance Grant approved September 12, 2015



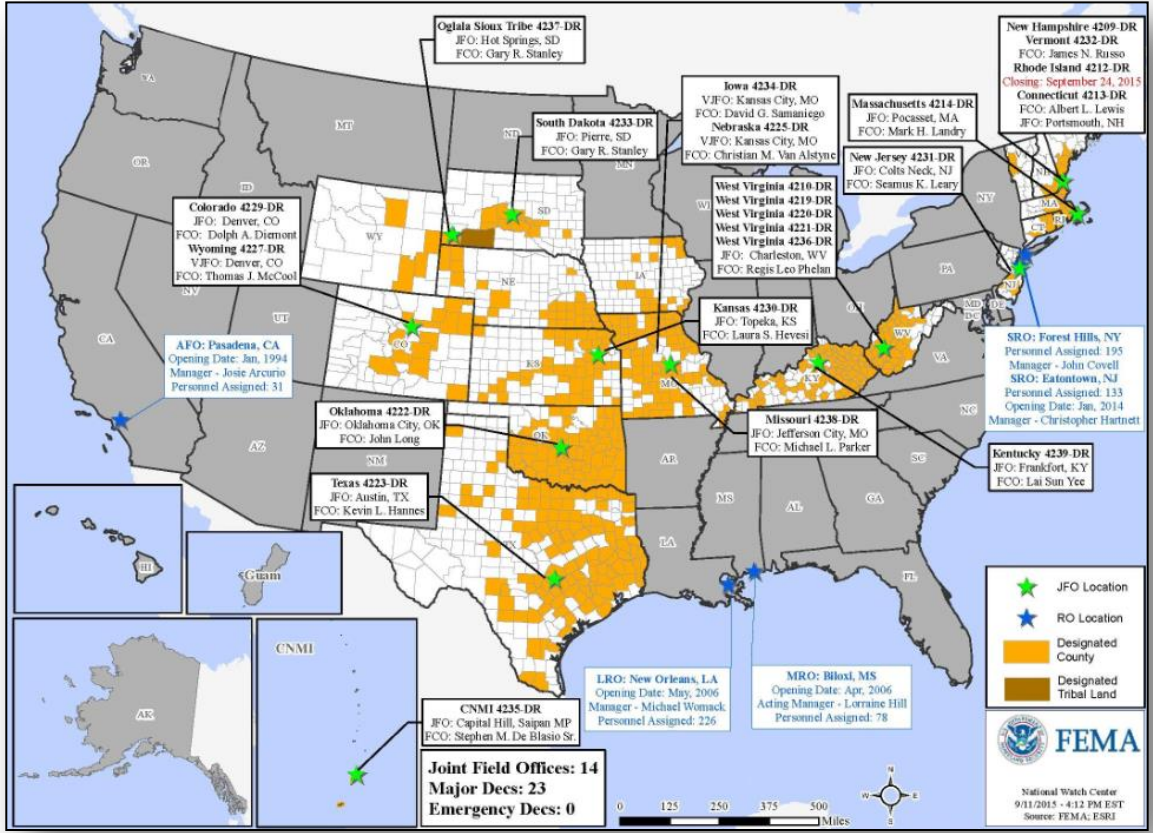
# Wildfire Summary



Fire Name (County)	FMAG #	Acres burned	% Contained	Evacuations (Residents)	Structures Threatened	Structures Damaged/ Destroyed	Fatalities/ Injuries
<b>California</b>							
Butte Fire (Amador County)	FEMA-5111-FM-CA	65,000 (+272)	15% (+10)	9,800 (+8350)	6,400 (6,150 homes)	0/132 (+117) (81 homes)	0/0
Valley Fire (Lake, Napa Counties)	FEMA-****-FM-CA	25,000	0%	8,000	9,150 (9,000 homes)	0/0	0/0



# Open Field Offices as of September 13

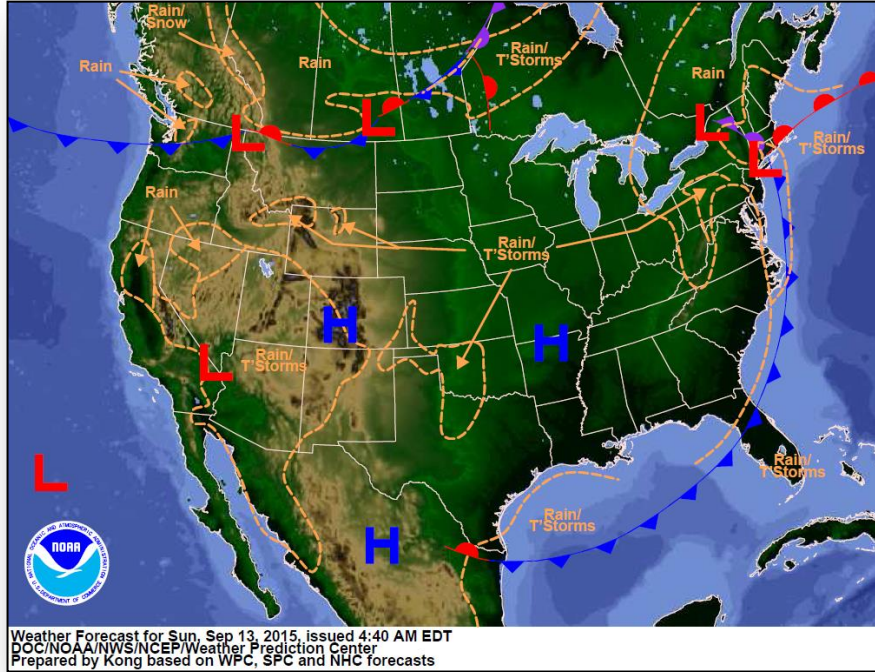


# Joint Preliminary Damage Assessments

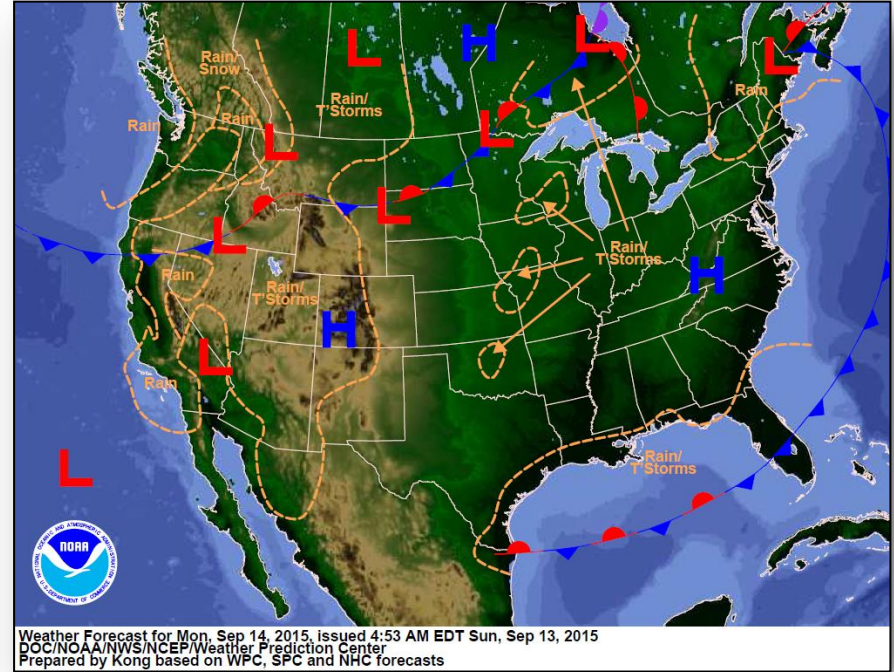


Region	State / Location	Event	I/PA	Number of Counties		Start – End
				Requested	Complete	
X	WA	Wildfires June 29, 2015 & ongoing	IA	5	0	9/14 – TBD
			PA	5	0	9/14 – TBD
X	Colville Reservation (WA)	Wildfires June 29, 2015 & ongoing	IA	1	0	9/14 – TBD
			PA	1	0	9/14 – TBD

# National Weather Forecast

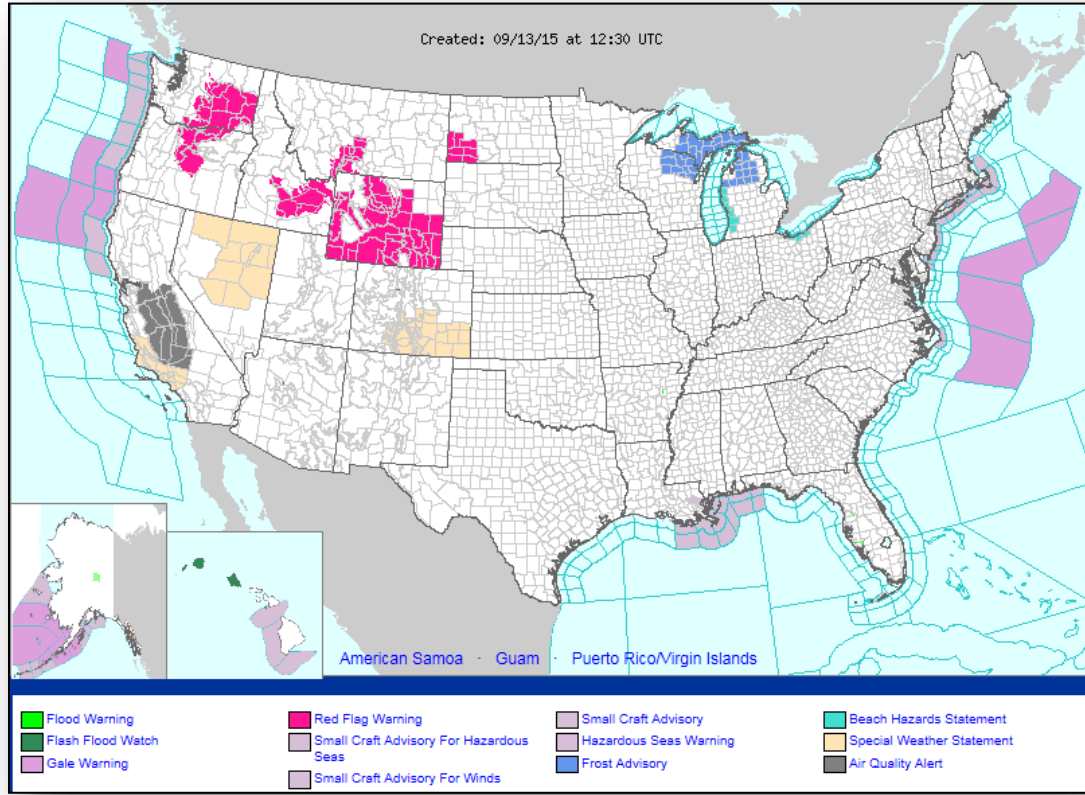


*Today*

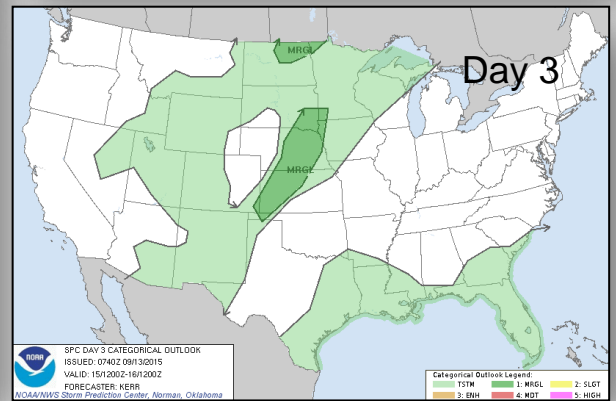
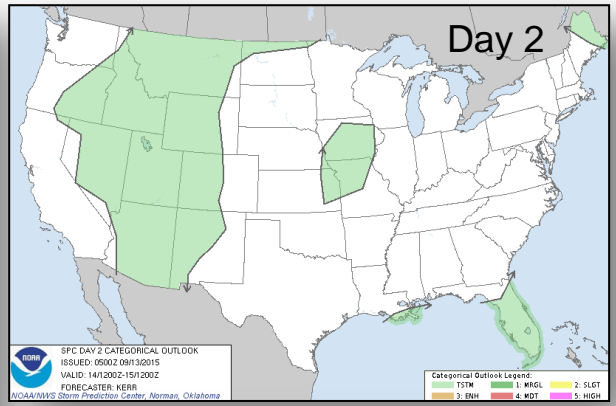
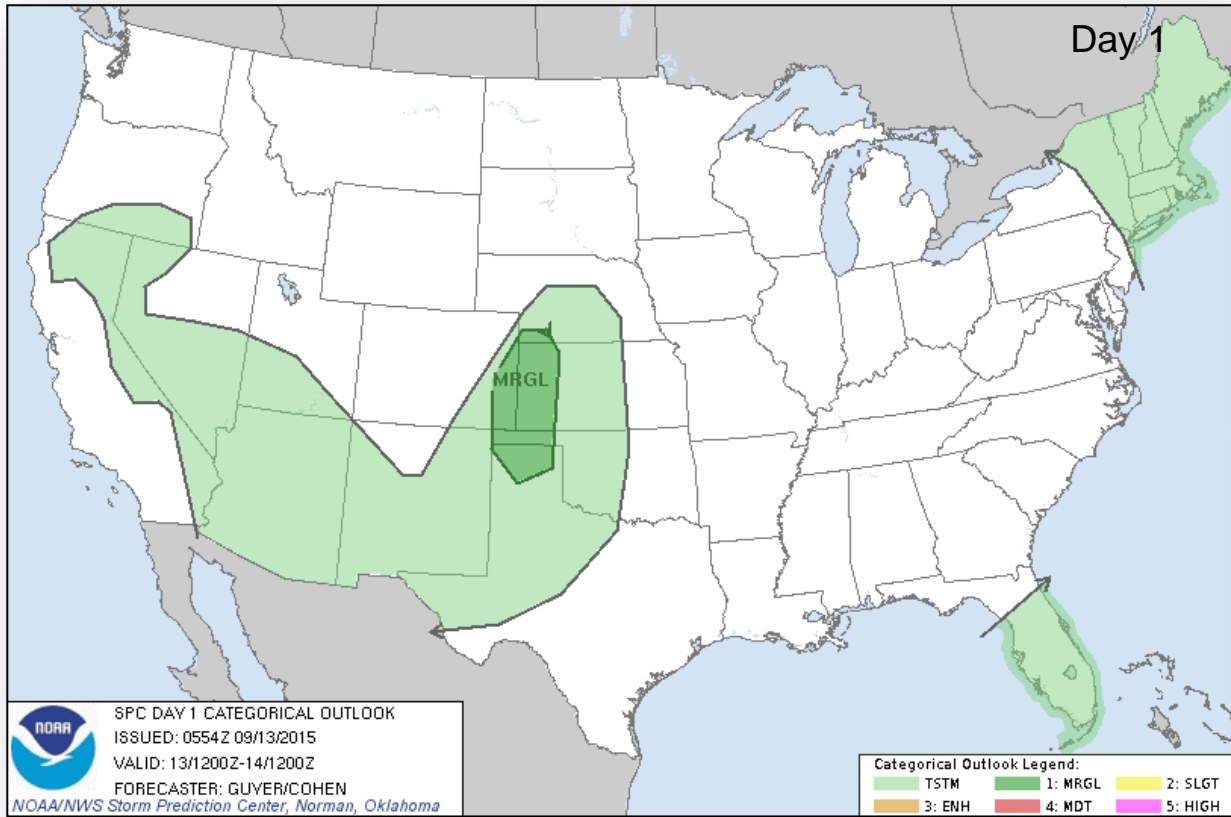


*Tomorrow*

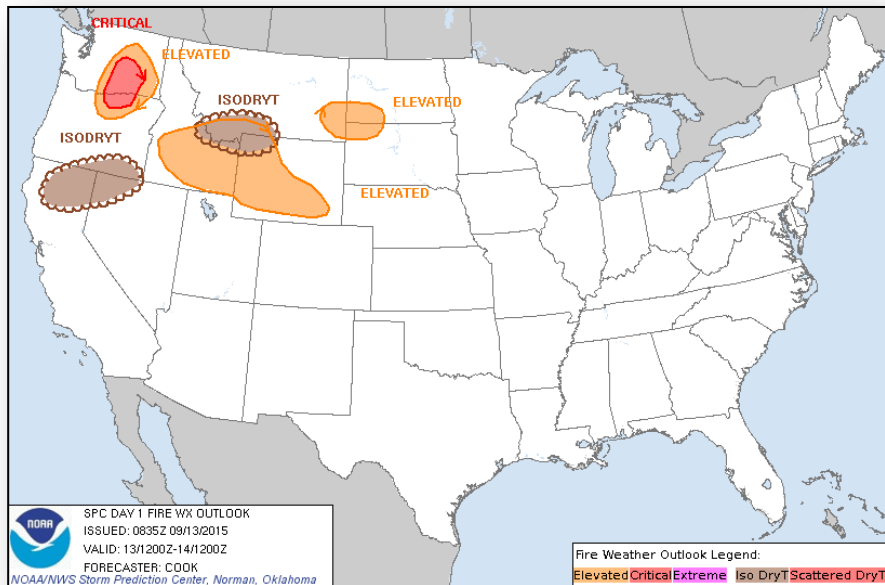
# Active Watches/Warnings



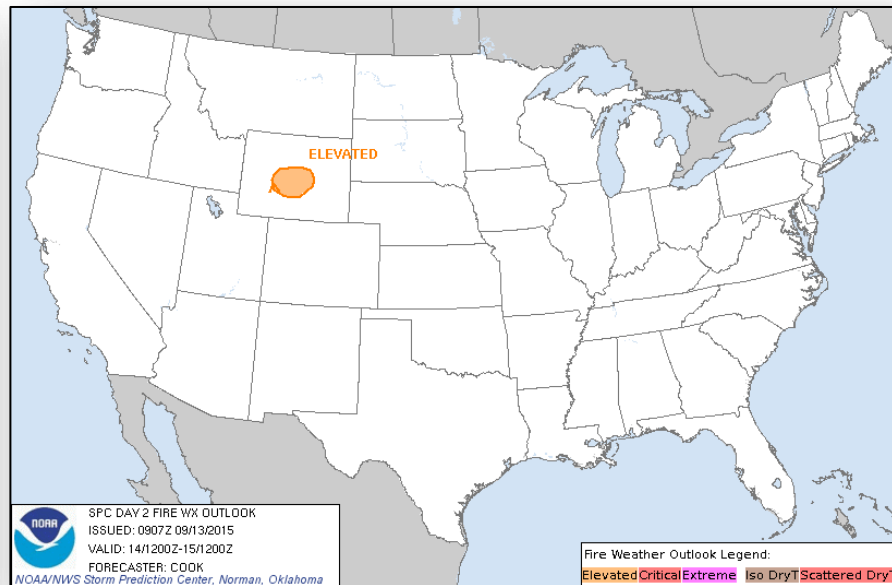
# Severe Weather Outlook, Days 1 – 3



# Fire Weather Outlook, Days 1 – 2

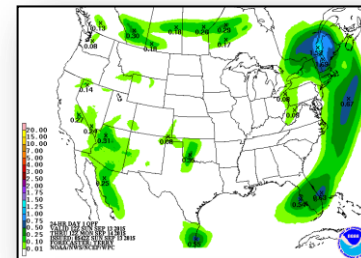
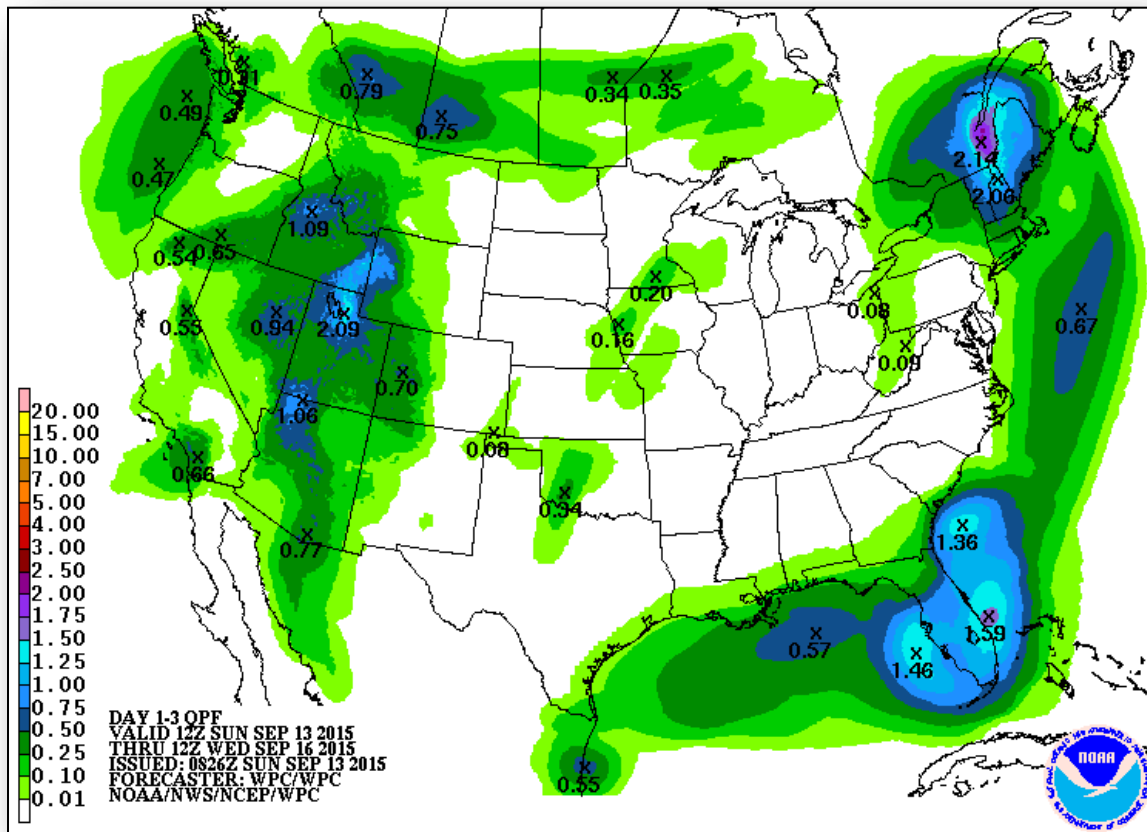


*Today*

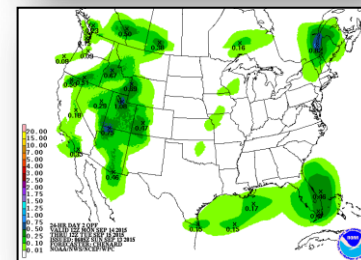


*Tomorrow*

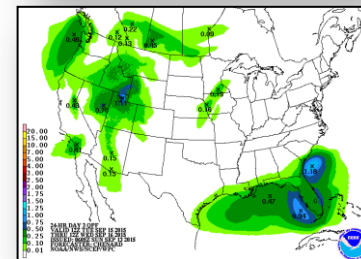
# Precipitation Forecast, 1 – 3 Day



Day 1

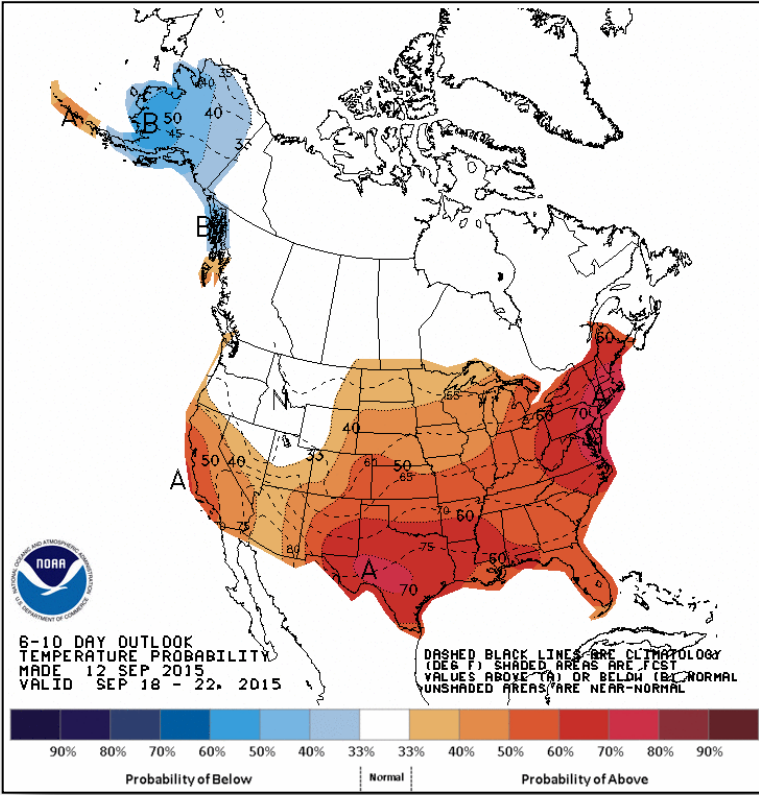


Day 2

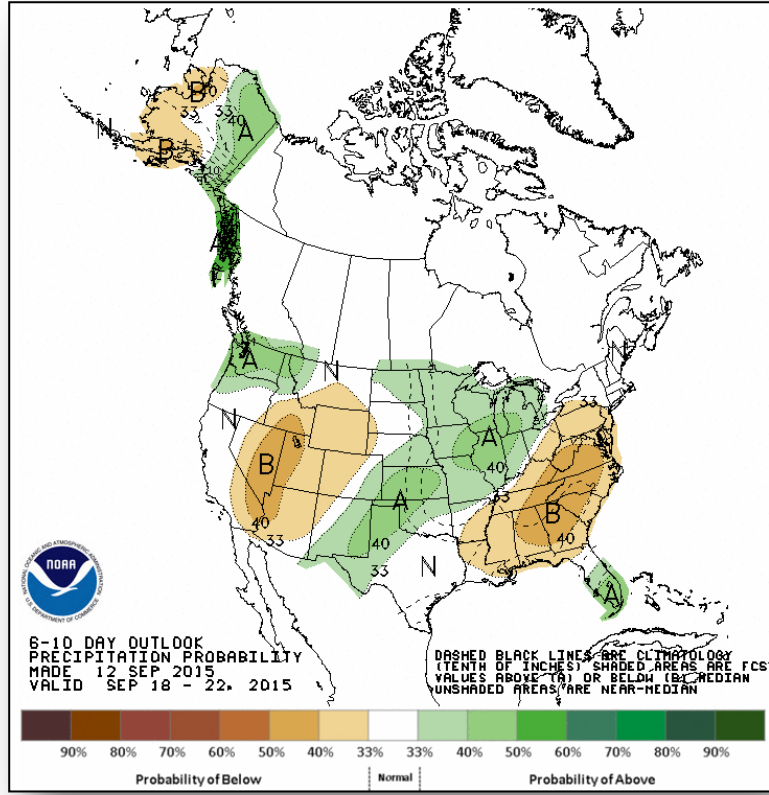


Day 3

# 6-10 Day Outlooks



**Temperature Probability**



**Precipitation Probability**

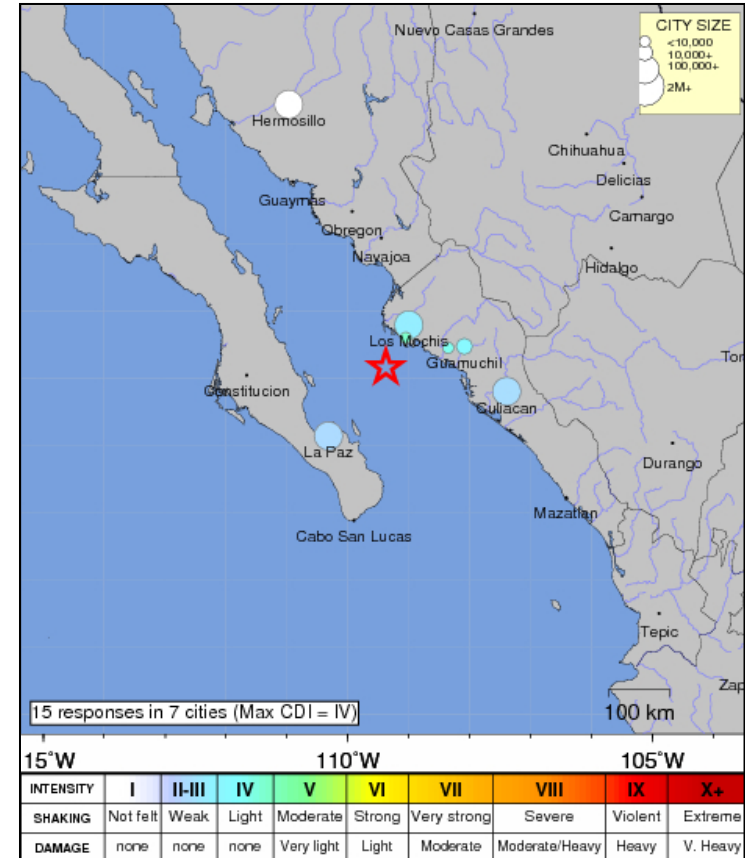


# Earthquake – Gulf of California



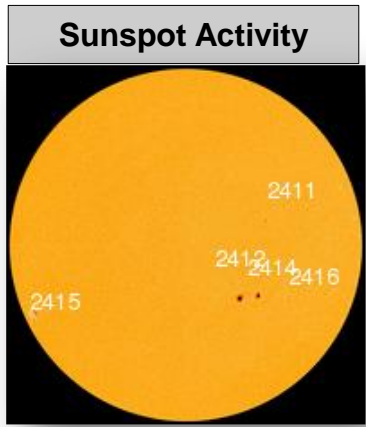
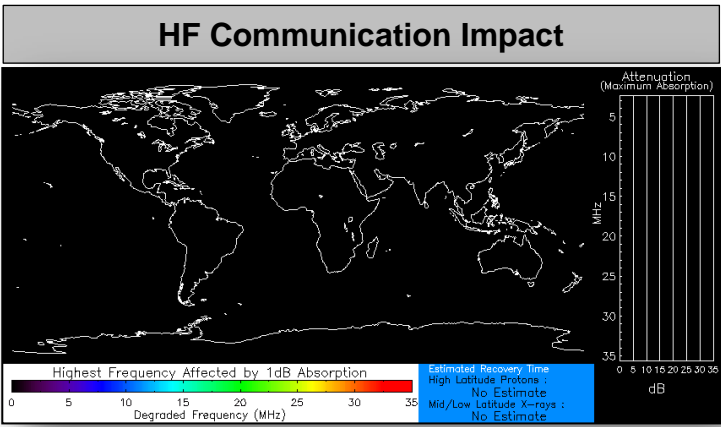
## **M6.6 earthquake Topolobampo, Mexico**

- Occurred at 4:14 EDT September 13, 2015
- 53 miles SW of Topolobampo, Mexico; 600 miles SSE of Phoenix, AZ
- Modified Mercalli Intensity (MMI) of V
  - Moderate shaking felt by up to 619k people
- Green pager alert issued; low likelihood of casualties or damage
- No impacts or injuries reported at this time
- No tsunami generated



# Space Weather

	Past 24 Hours	Current	Next 24 Hours
Space Weather Activity:	None	None	Minor
• Geomagnetic Storms	None	None	G1
• Solar Radiation Storms	None	None	None
• Radio Blackouts	None	None	None



# FEMA Readiness – Deployable Teams /Assets



Deployable Teams/Assets									
Resource	Status	Total	FMC Available		Partially Available	Not Available	Detailed, Deployed, Activated	Comments	Rating Criterion
FCO		35	10	29%	0	1	24		OFDC Readiness: FCO Green Yellow Red Type 1 3+ 2 1 Type 2 4+ 3 2 Type 3 4 3 2  FDRC 3 2 1
FDRC		9	5	56%	0	0	4		
US&R		28	27	96%	0	1	0	NM-TF1 (Red) – Personnel shortages	<ul style="list-style-type: none"> <li>• Green = Available/FMC</li> <li>• Yellow = Available/PMC</li> <li>• Red = Out-of-Service</li> <li>• Blue = Assigned/Deployed</li> </ul>
National IMAT		3	3	100%	0	0	0		<ul style="list-style-type: none"> <li>• Green: 3 avail</li> <li>• Yellow: 1-2 avail</li> <li>• Red: 0 avail (<i>Individual N-IMAT red if 50% of Section Chiefs and/or Team Leader is unavailable for deployment.</i>)</li> </ul>
Regional IMAT		13	7	54%	0	0	6	<u>Deployed:</u> RVI (Team 2) deployed to TX RVII deployed to MO RVIII (Team 1) deployed to SD & CO RIX (Teams 1 & 2) deployed to CNMI RX deployed to WA	<ul style="list-style-type: none"> <li>• Green: 7 or more avail</li> <li>• Yellow: 4 - 6 teams available</li> <li>• Red: &gt; 8 teams deployed/unavailable</li> </ul> R-IMAT also red if TL Ops/Log Chief is unavailable & has no qualified replacement
MCOV		59	48	81%	0	11	0		<ul style="list-style-type: none"> <li>• Green = 80 – 100% avail</li> <li>• Yellow = 60 – 79% avail</li> <li>• Red = 59% or below avail</li> <li>• Readiness remains 95%</li> </ul>

# FEMA Readiness – National/Regional Teams



National/Regional Teams									
Resource	Status	Total	FMC Available		Partially Available	Not Available	Status	Comments	Rating Criterion
NWC		5	5	100%	0	0	Watch/Steady State 24/7		<ul style="list-style-type: none"> <li>• Green = FMC</li> <li>• Yellow = PMC</li> <li>• Red = NMC</li> </ul>
NRCC		2	344	89%	0	44	Not Activated		
HLT		1	N/A	N/A	0	0	Activated		
DEST							Not Activated		
RRCCs		10	10	100%	0	0	Not Activated		
RWCs/MOCs		10	10	100%	0	0	Not Activated		



# FEMA

**FEMA's mission is to support our citizens and first responders to ensure that as a nation we work together to build, sustain, and improve our capability to prepare for, protect against, respond to, recover from, and mitigate all hazards.**