

The Disaster Center is dedicated to the idea that disaster mitigation is cost effective and individuals pursuing their own interest are the greatest potential force for disaster reduction.

Please consider making a small donation to the Disaster Center



When disaster mitigation is cost effective, we are on the road to bringing disasters to an end.



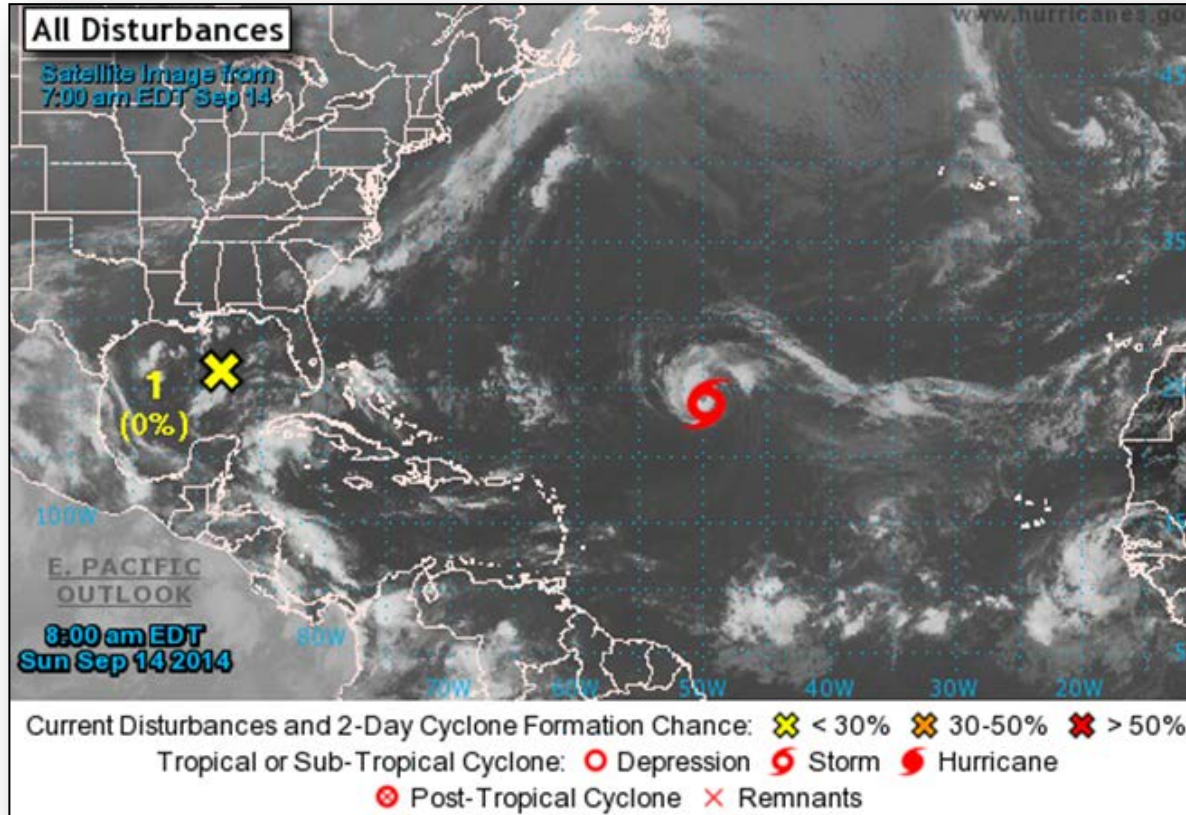
FEMA

Daily Operations Briefing

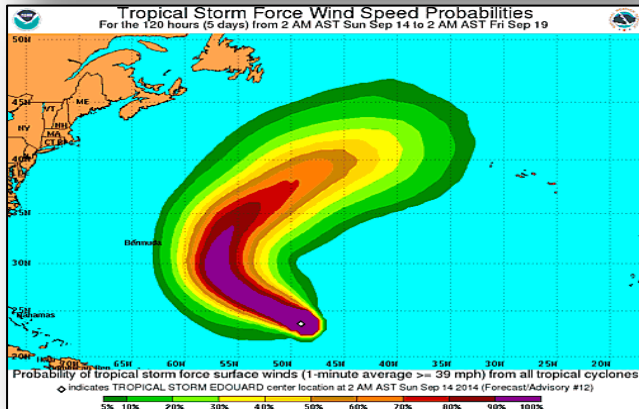
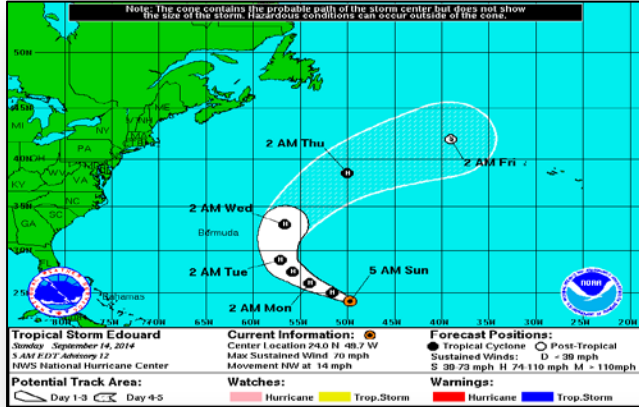
Sunday, September 14, 2014

8:30 a.m. EDT

2-Day Tropical Outlook – Atlantic



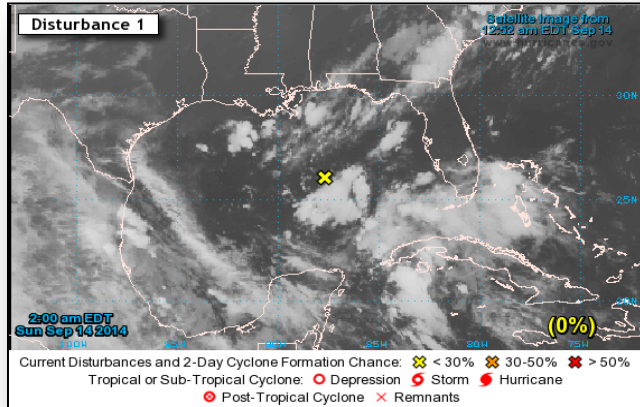
Tropical Storm Edouard – Atlantic



Tropical Storm Edouard (as of 5:00 a.m. EDT)

- No impact to US interest expected
- Located 950 miles ENE of Northern Leeward Islands
- Moving NW at 14 mph; this motion expected to continue at a slightly slower forward speed by Monday
- Maximum sustained winds 70 mph
- Some strengthening is forecast during the next 48 hours
- Edouard is expected to become a hurricane late today
- Tropical storm force winds extend 140 miles

2-Day Tropical Outlook – Atlantic



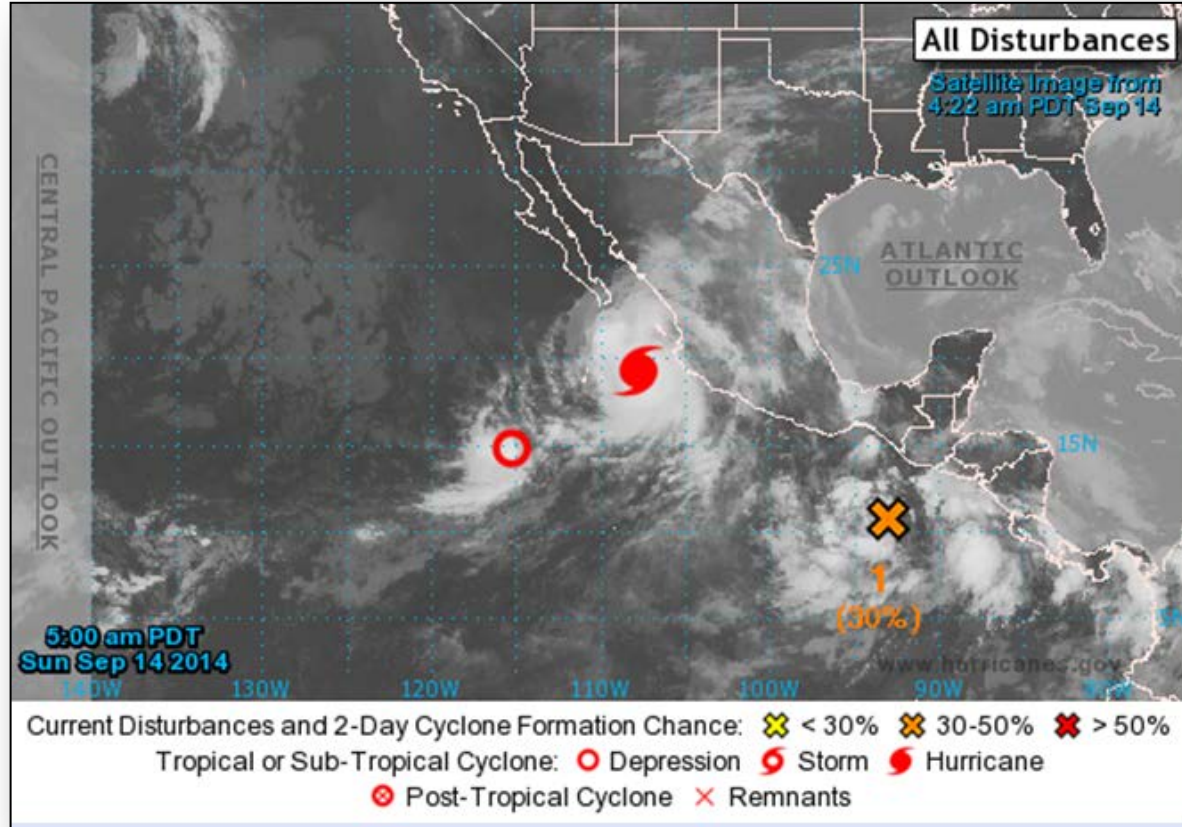
Disturbance 1 (as of 8:00 a.m. EDT)

- Located over the central Gulf of Mexico
- Moving westward across the Gulf of Mexico
- Not conducive for development
- Formation chance:
 - Next 48 hours: Low (0%)
 - Next 5 days: Low (0%)

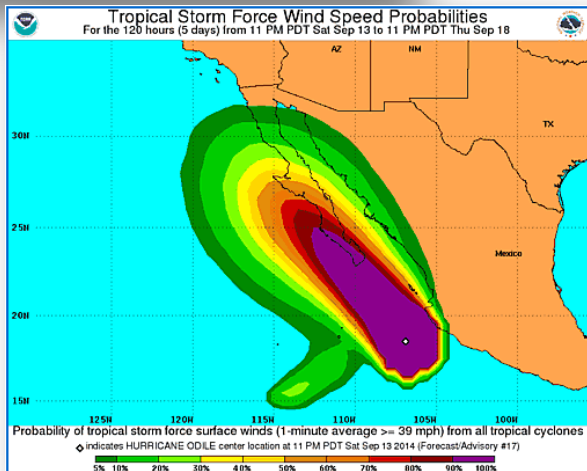
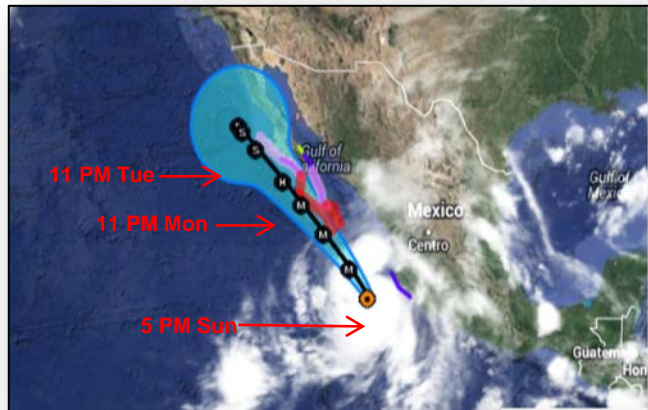
2-Day Tropical Outlook – Eastern Pacific



FEMA



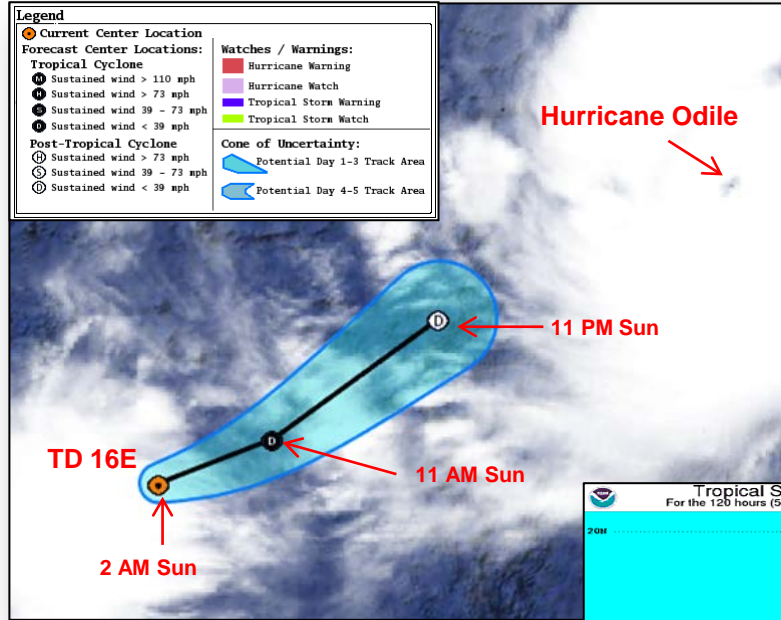
Eastern Pacific-Hurricane Odile



Hurricane Odile (CAT 4) (as of 5:00 a.m. EDT)

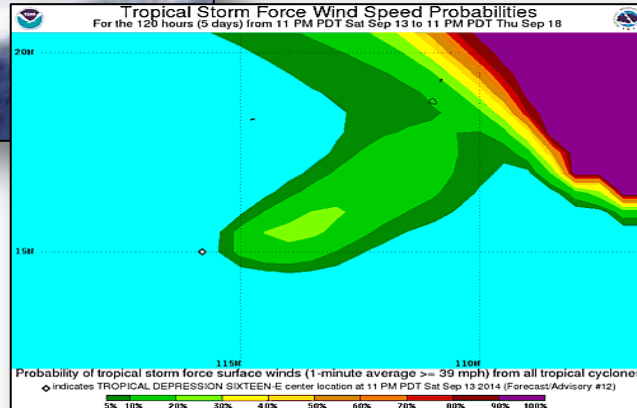
- Located 225 miles W of Manzanillo, Mexico
- Moving NNW at 15 mph
- NW motion with increase in forward speed expected tonight thru Monday
- Forecast to remain well offshore of SW coast of Mexico
- Maximum sustained winds 135 mph
- Hurricane-Force winds extend 45 miles
- Tropical Storm-force winds extend 185 miles
- No watches or warnings in effect for the U.S.

Tropical Depression 16E – Eastern Pacific

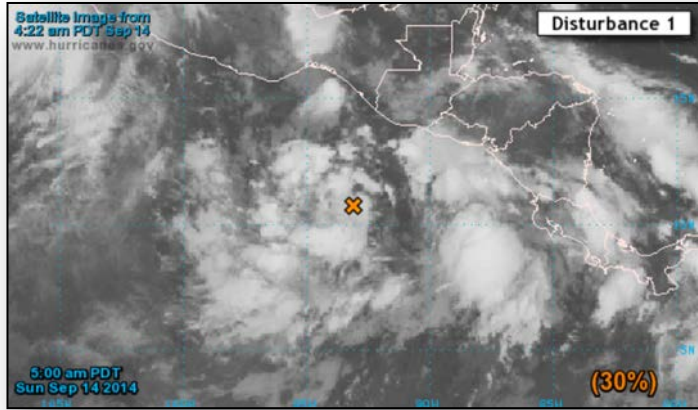


Tropical Depression Sixteen-E (as of 5:00 a.m. EDT)

- Located 655 miles SSW of southern tip of Baja California, Mexico
- Moving E at 12 mph
- Movement toward the east and northeast is expected on Sunday
- Maximum sustained winds 35 mph
- The Depression is forecast to dissipated by Monday



2-Day Tropical Outlook – Eastern Pacific



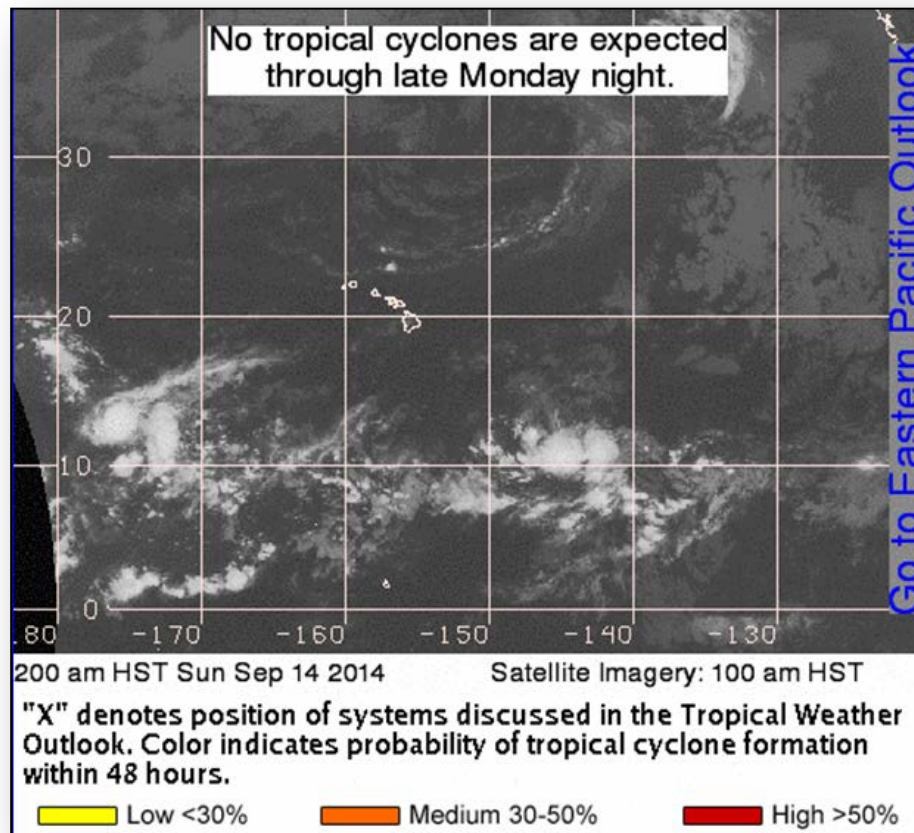
Disturbance 1 (as of 5:00 a.m. EDT)

- Located a couple hundred miles south of Guatemala
- Moving slowly toward the NW
- Conducive for gradual development over the next several days
- Formation chance:
 - Next 48 hours: Medium (30%)
 - Next 5 days: High (70%)

2-Day Tropical Outlook – Central Pacific



FEMA

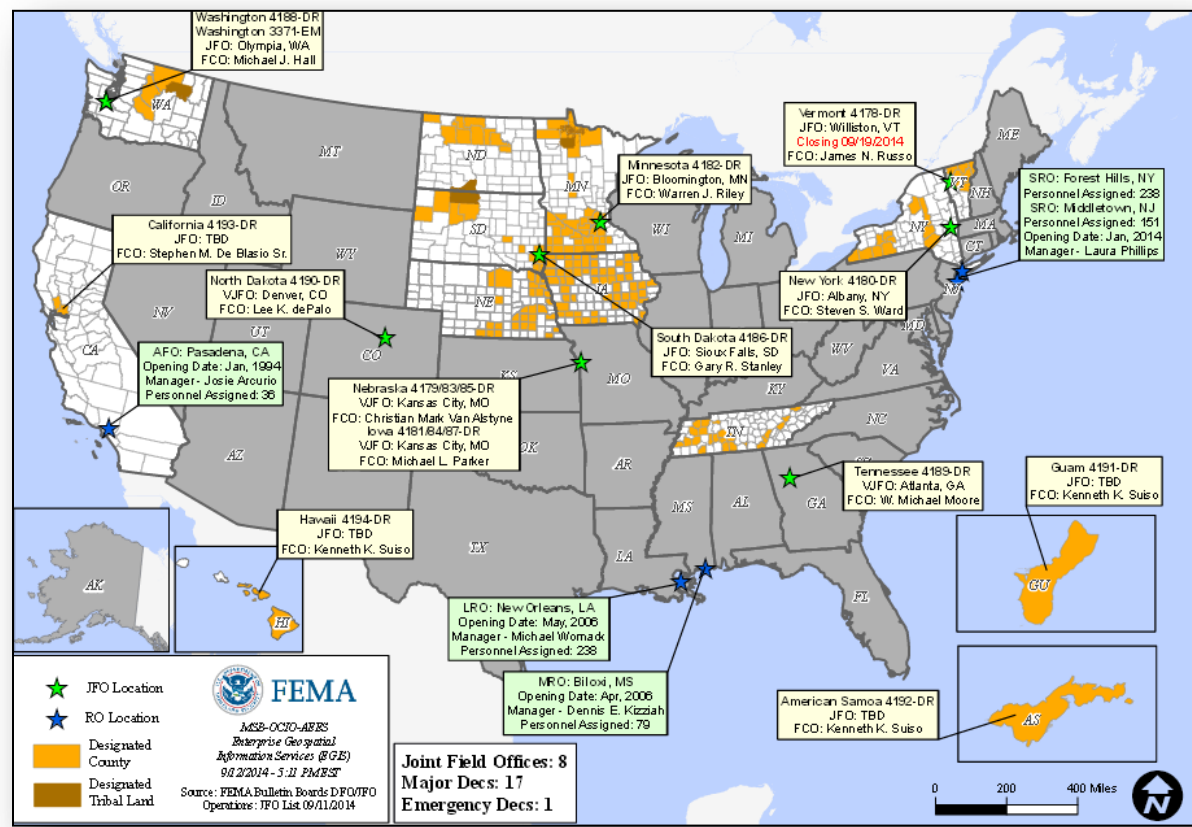


Disaster Requests & Declarations



Declaration Requests in Process		Requests APPROVED (since last report)	Requests DENIED (since last report)
1	Date Requested	0	0
VT – DR Severe Storms and Flooding	September 5, 2014		

Open Field Offices as of September 14



Joint Preliminary Damage Assessments

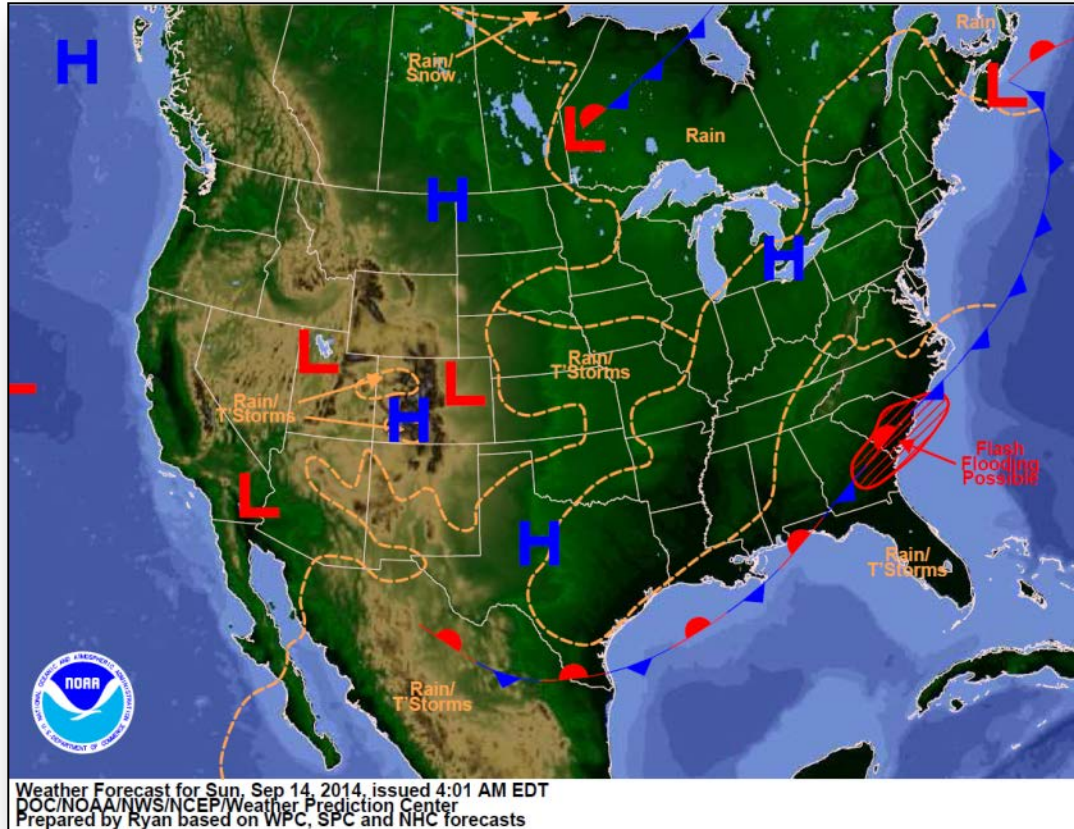


Region	State / Location	Event	IA/PA	Number of Counties		Start – End
				Requested	Complete	
III	MD	Severe Storms August 12, 2014	PA	2	0	9/10 – TBD
IV	KY	Severe Storms, Flash Flooding, Flooding, Slides, & Mudslides August 18 – 24, 2014	IA	1	1	9/10 – 9/12
			PA	4	4	9/10 – 9/12
VI	NM	Severe Storms & Flooding July 27 – August 5, 2014	PA	8	4	9/10 – 9/15
VIII	MT	Severe Storms & Flooding August 21 – 28, 2014	PA	6	0	9/22 – 9/26
VIII	ND	Severe Storms & Flooding August 15 – 25, 2014	PA	5	0	9/15 – 9/19
IX	NV	Severe Storms and Flooding September 8, 2014	IA	1	0	9/15 – TBD
			PA	2	0	9/15 – TBD

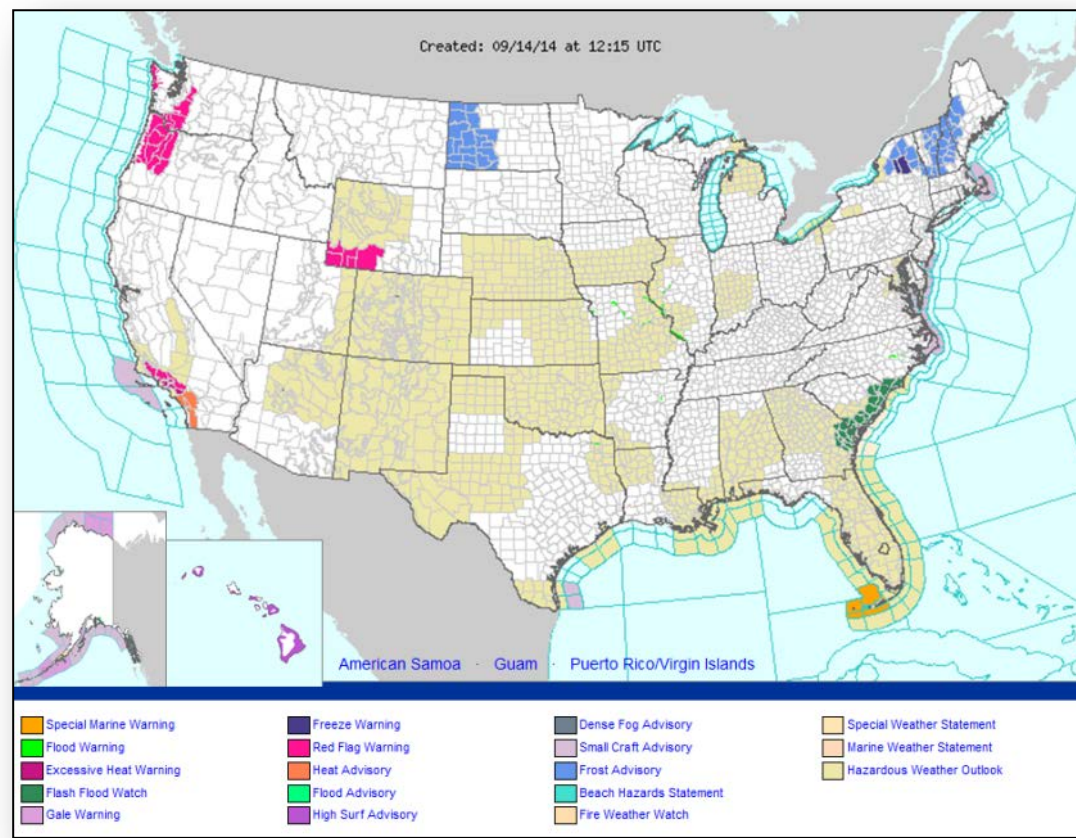
National Weather Forecast



FEMA



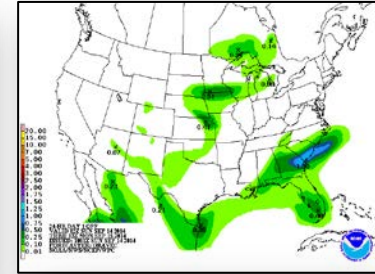
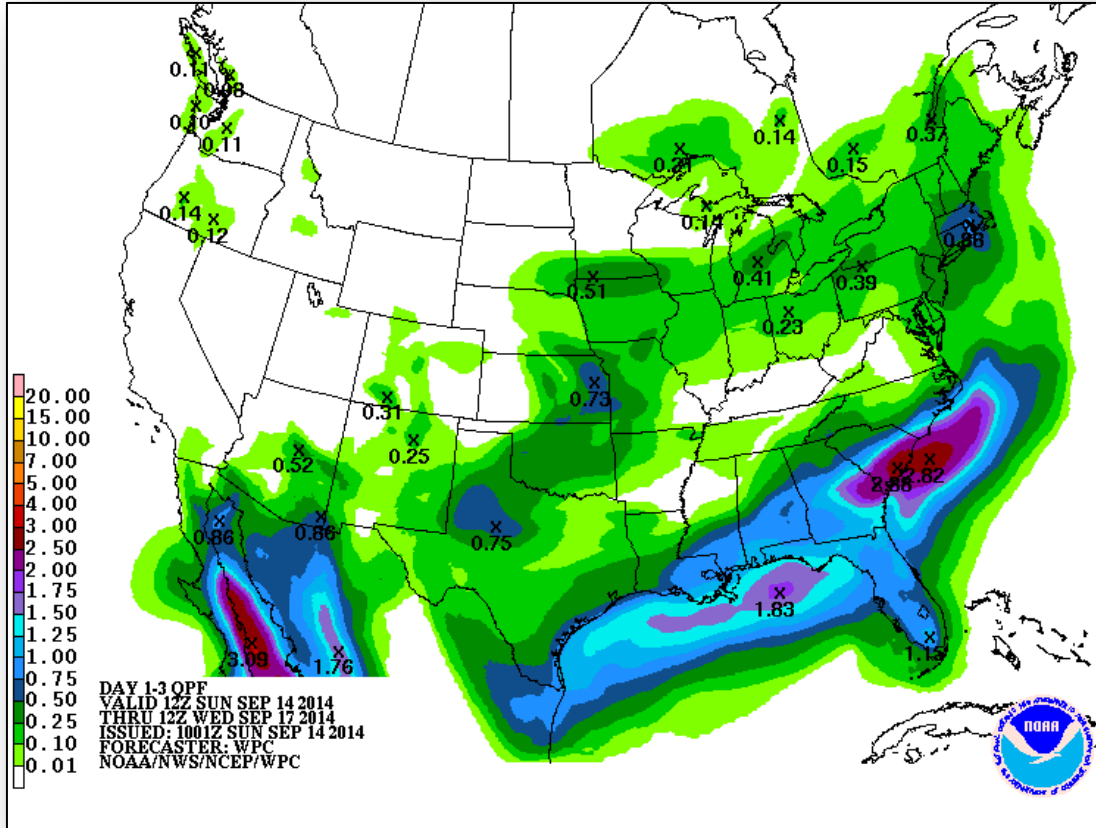
Active Watches/Warnings



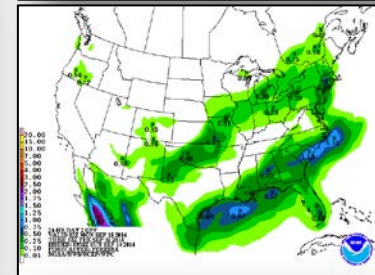
Precipitation Forecast – 3 Day



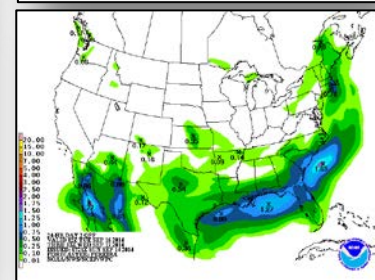
FEMA



Day 1

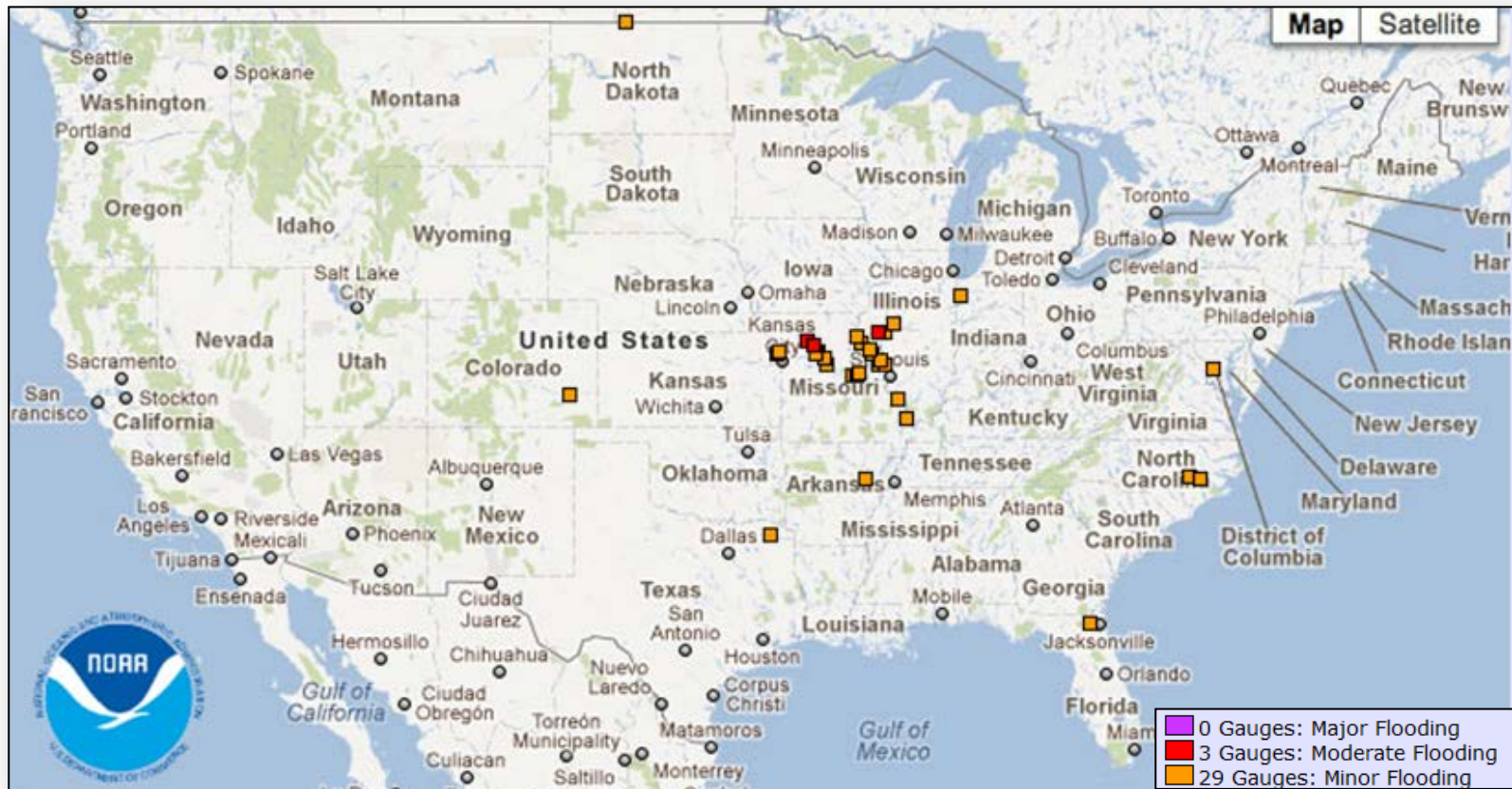


Day 2

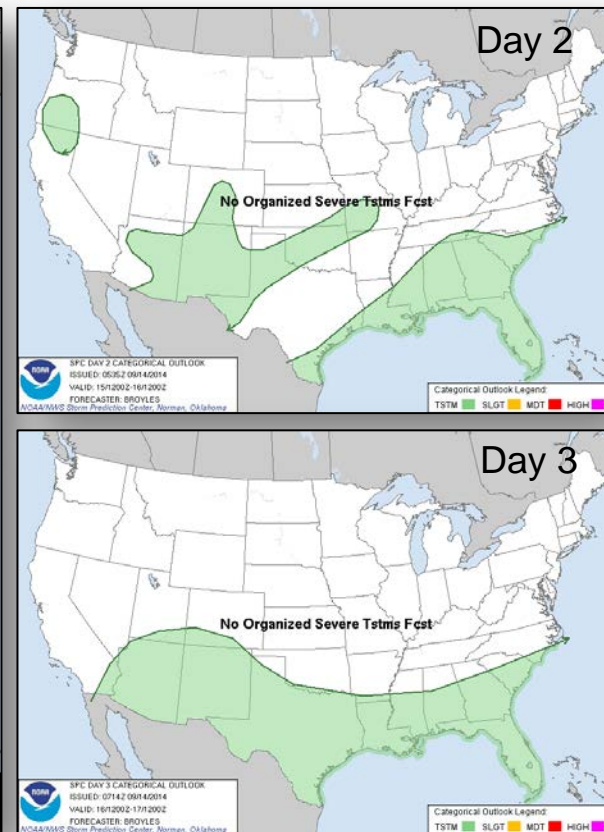
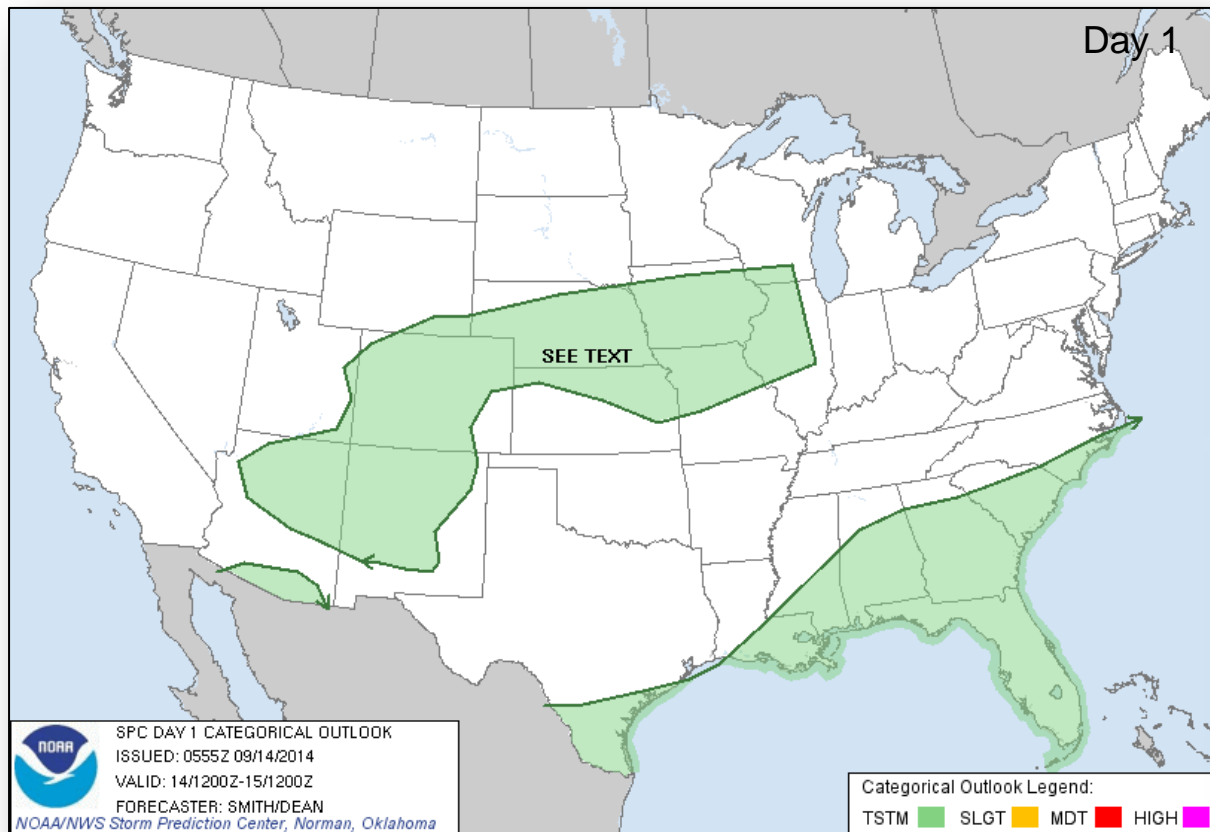


Day 3

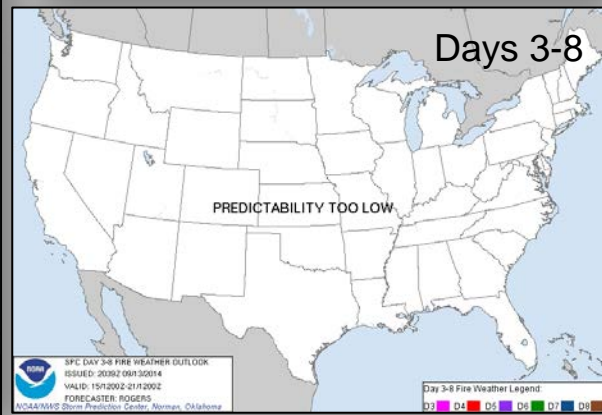
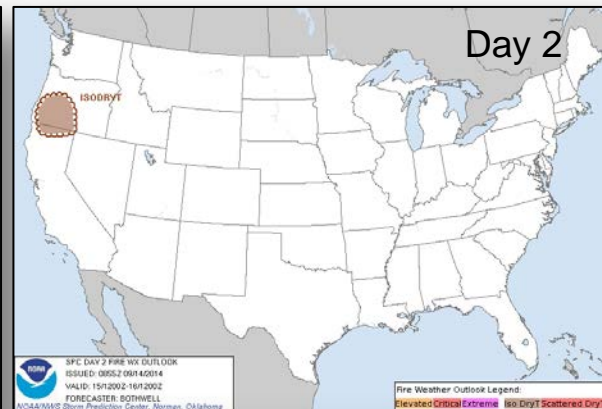
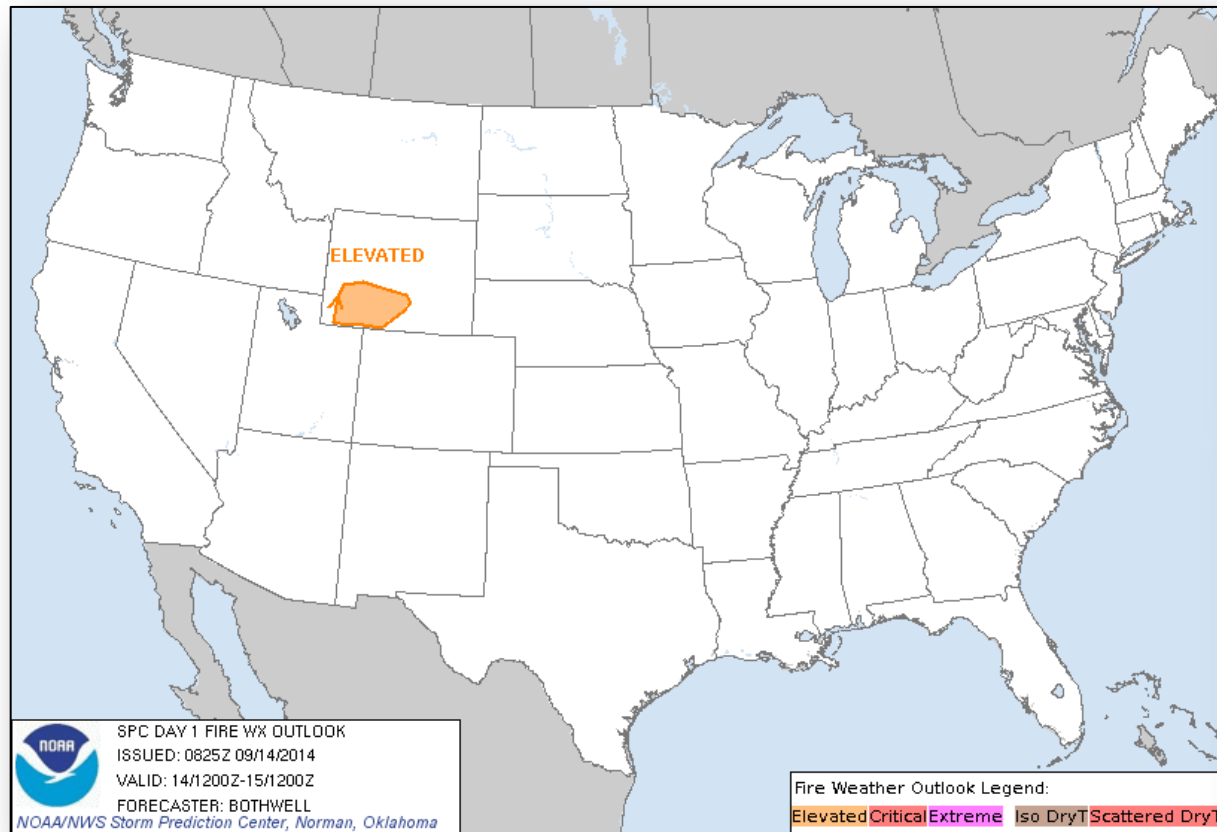
River Forecast



Convective Outlook, Days 1 – 3

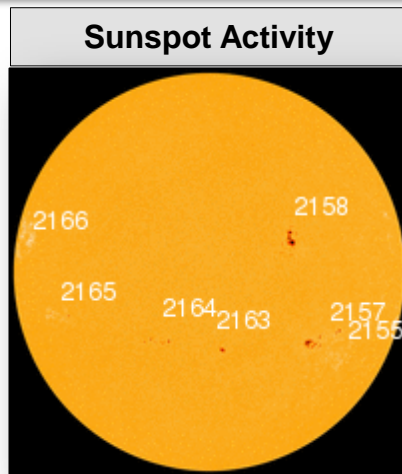
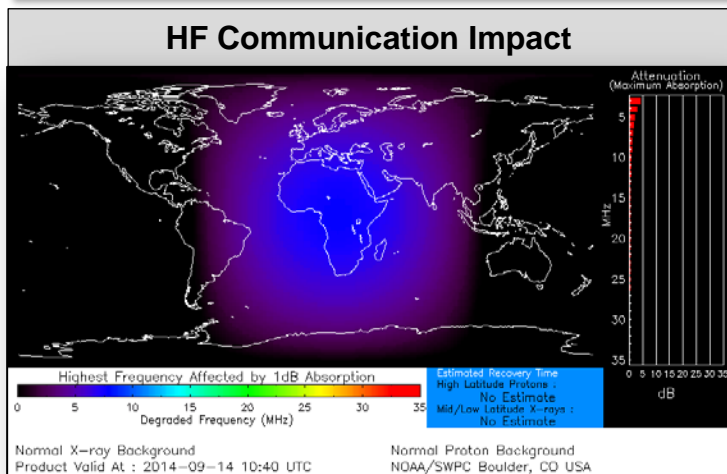


Fire Weather Outlook, Days 1 – 8



Space Weather

NOAA Scales Activity (Range: 1/minor to 5/extreme)	Past 24 Hours	Current	Next 24 Hours
Space Weather Activity:	Minor	None	Minor
• Geomagnetic Storms	None	None	None
• Solar Radiation Storms	None	None	None
• Radio Blackouts	R1	None	R1



FEMA Readiness – Deployable Teams/Assets



Deployable Teams/Assets									
Resource	Status	Total	Available		Partially Available	Not Available	Detailed Deployed Activated	Comments	Rating Criterion
FCO		39	16	41%	0	1	22		OFDC Readiness: FCO Green Yellow Red Type 1 3+ 2 1 Type 2 4+ 3 2 Type 3 4 3 2
FDRC		10	5	50%	0	0	5		FDRC 3 2 1
US&R		28	26	93%	1	1	0	<ul style="list-style-type: none">NM-TF1 (Red for personnel shortages)CA-TF1 (Yellow for logistics & management)	<ul style="list-style-type: none">Green = Available/FMCYellow = Available/PMCRed = Out-of-ServiceBlue = Assigned/Deployed
National IMAT		3	3	100%	0	0	0		<ul style="list-style-type: none">Green: 3 availYellow: 1-2 availRed: 0 avail (<i>Individual N-IMAT red if 50% of Section Chiefs and/or Team Leader is unavailable for deployment.</i>)
Regional IMAT		13	5	38%	3	4	1	<u>Partially Mission Capable (PMC):</u> <ul style="list-style-type: none">Region II, III, VI <u>Not Mission Capable (NMC):</u> <ul style="list-style-type: none">Region V, VII, IX (Team 1), VI (Team 2) <u>Deployed</u> <ul style="list-style-type: none">Region X to WA	<ul style="list-style-type: none">Green: 7 or more availYellow: 4 - 6 teams availableRed: > 8 teams deployed/unavailable <i>R-IMAT also red if TL Ops/Log Chief is unavailable and has no qualified replacement.</i>
MCOV		60	55	92%	0	5	0		<ul style="list-style-type: none">Green = 80 – 100% availYellow = 60 – 79% availRed = 59% or below availReadiness remains 95%

FEMA Readiness – National/Regional Teams



National/Regional Teams									
Resource	Status	Total	Available		Partially Available	Not Available	Deployed/ Activated	Comments	Rating Criterion
NWC		5	5	100%	0	0	24/7		• Green = FMC • Yellow = PMC • Red = NMC
NRCC		2	344	89%	0	44	Not Activated		
HLT		1	N/A	N/A	0	1	Activated		
DEST							Not Activated		
RRCCs		10	10	100%	0	0	None		
RWCs/MOCs		10	10	100%	0	0	24/7		



FEMA

FEMA's mission is to support our citizens and first responders to ensure that as a nation we work together to build, sustain, and improve our capability to prepare for, protect against, respond to, recover from, and mitigate all hazards.