

The Disaster Center is dedicated to the idea that disaster mitigation is cost effective and individuals pursuing their own interest are the greatest potential force for disaster reduction.

Please consider making a small donation to the Disaster Center



When disaster mitigation is cost effective, we are on the road to bringing disasters to an end.



FEMA

Daily Operations Briefing

Thursday, September 18, 2014

8:30 a.m. EDT

Significant Activity: Sep 17 – 18



Significant Events: CA & OR Wildfires

Tropical Activity:

- Atlantic – Hurricane Edouard (Cat 1); Disturbance 1 (Low, 10%)
- Eastern Pacific – Hurricane Polo; Remnants of Odile
- Central Pacific – Disturbance 1 (Low, near 0%); Disturbance 2 (Low; near 0%); Disturbance 3 (Low; near 0%)

Significant Weather:

- Flash flooding possible – Southwest to Lower Mississippi Valley; Southern/Central Plains to Lower/Middle Mississippi Valley
- Elevated Fire Weather Areas: none; Red Flag Warnings: WY
- Space Weather: Past 24 hours: Minor, R1 radio blackouts occurred; Next 24 hours: none predicted

FEMA Readiness: No activity

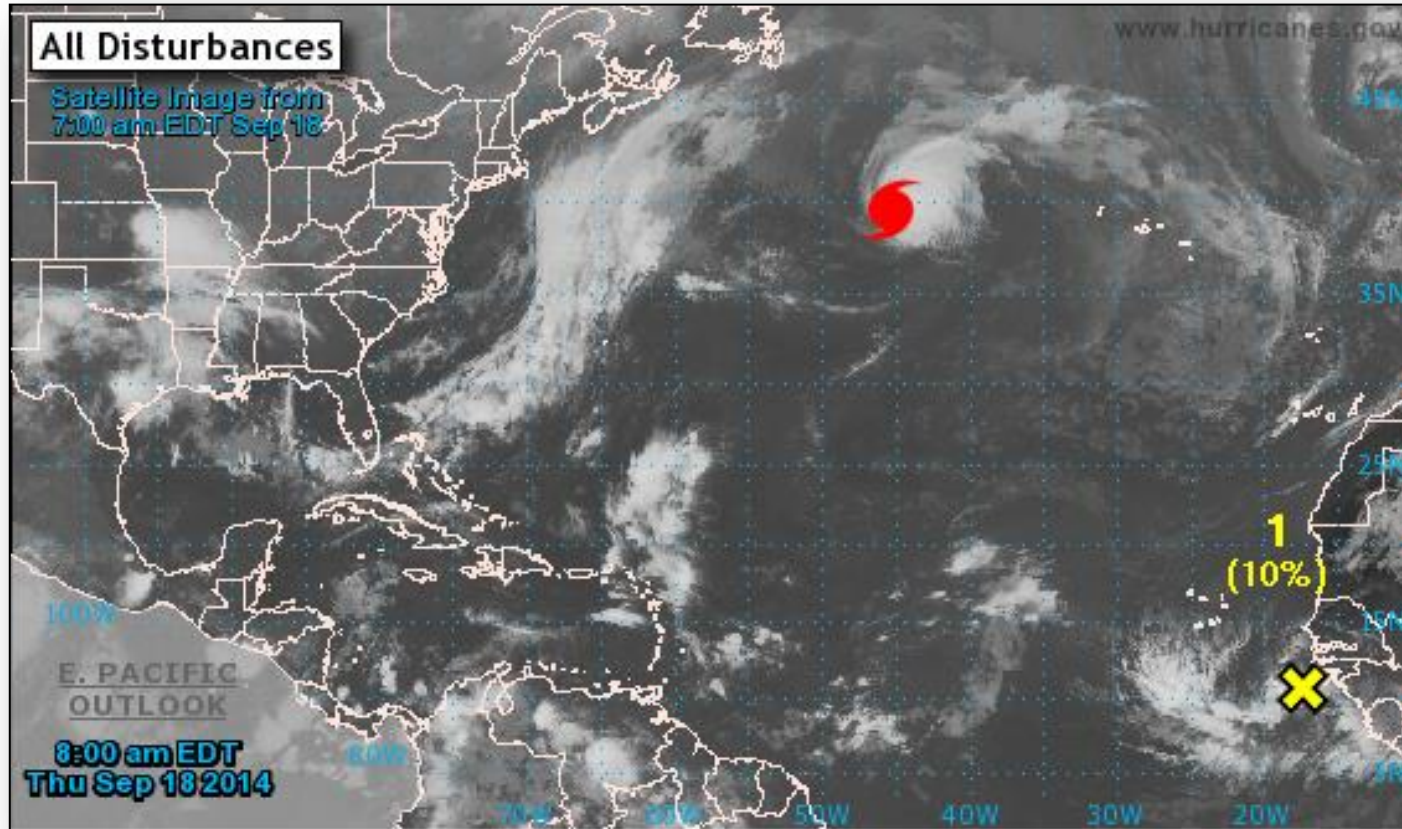
Declaration Activity:

- Request for Major Disaster Declaration – Michigan
- FMAG approved for King Fire, CA

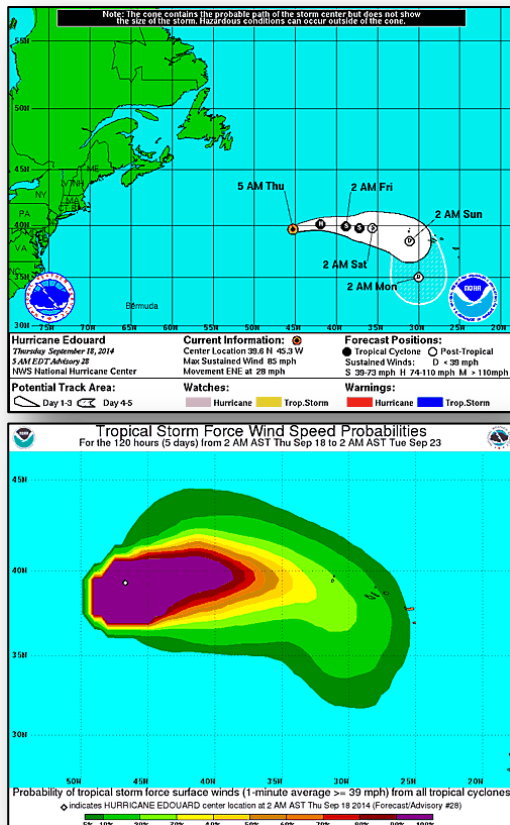
2-Day Tropical Outlook – Atlantic



FEMA



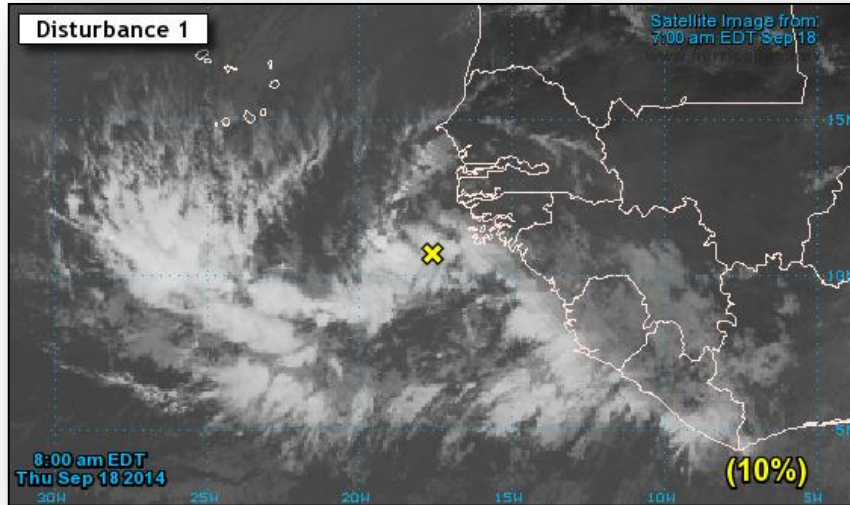
Atlantic – Hurricane Edouard



Hurricane Edouard (Cat 1) (as of 5:00 a.m. EDT)

- Located 890 miles W of Fayal Island in western Azores
- Moving ENE at 28 mph
- Decrease in forward speed expected later today; even slower eastward motion forecast tonight through Friday night
- Maximum sustained winds 85 mph
- Weakening forecast next 48 hours
- Expected to weaken below hurricane strength later today or tonight and become post-tropical cyclone by Friday night
- Hurricane-force winds extend 80 miles
- Tropical storm-force winds extend 230 miles
- No coastal watches or warnings in effect

2 – Day Tropical Outlook - Atlantic



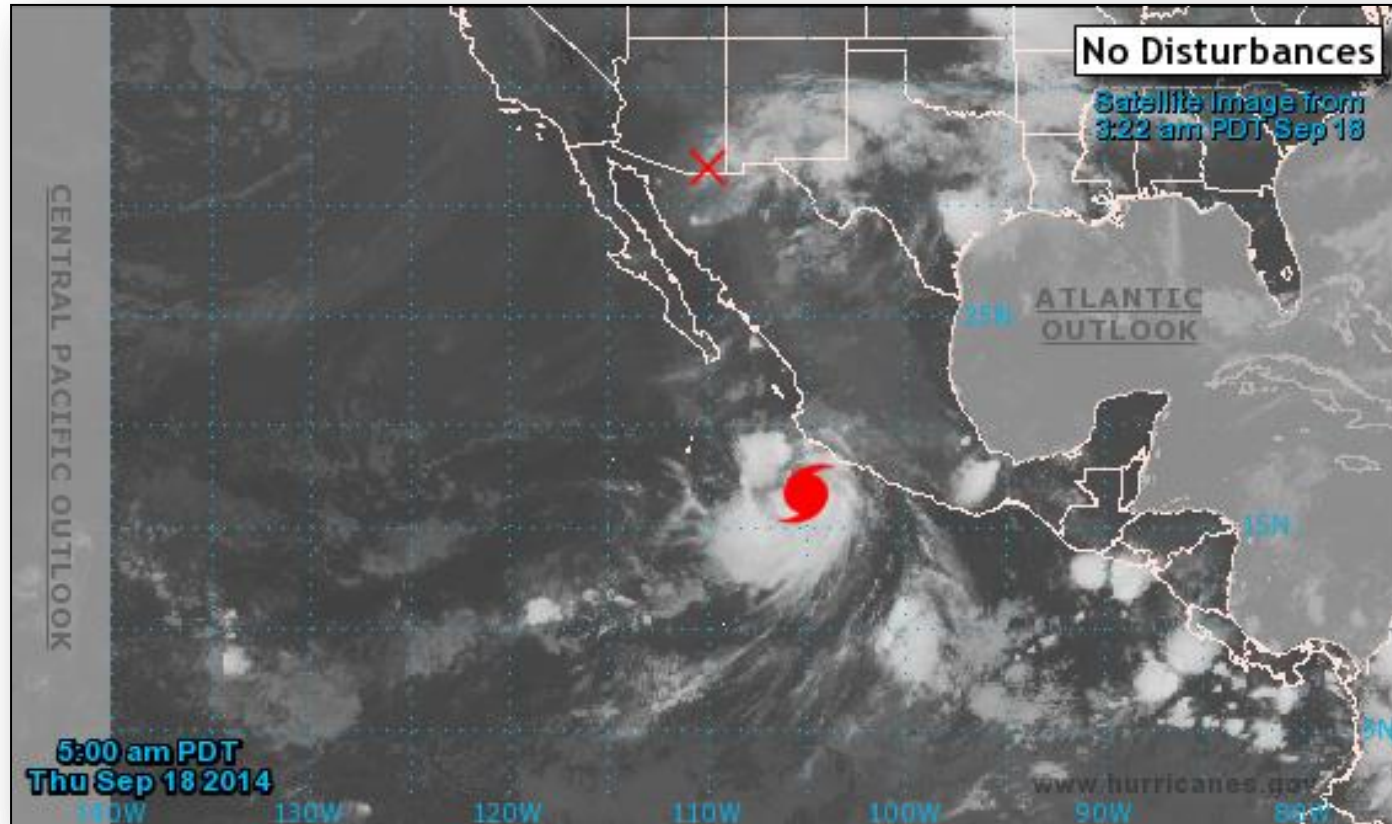
Disturbance 1 (as of 8:00 a.m. EDT)

- A tropical wave located near west coast of Africa
- Moving WNW to NW slowly
- Environmental conditions appears to be marginally conducive
- Some gradual development over next several days
- Formation chance:
 - Next 48 hours: Low (10%)
 - Next 5 days: Low (20%)

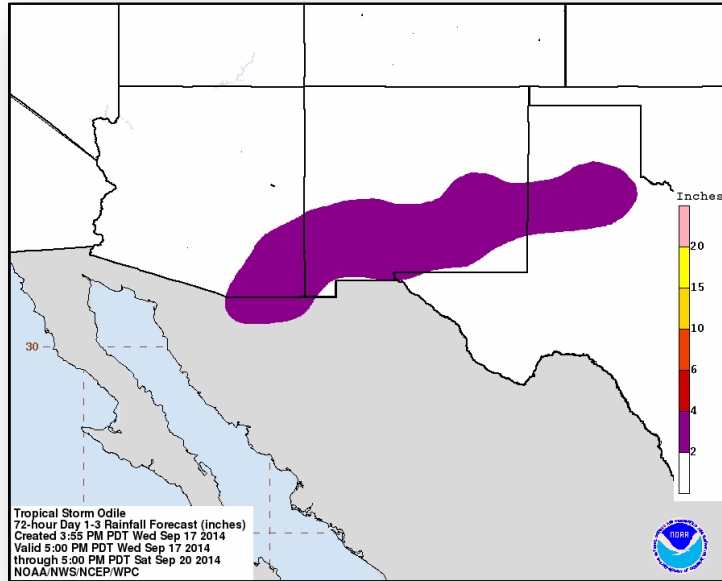
2-Day Tropical Outlook – Eastern Pacific



FEMA



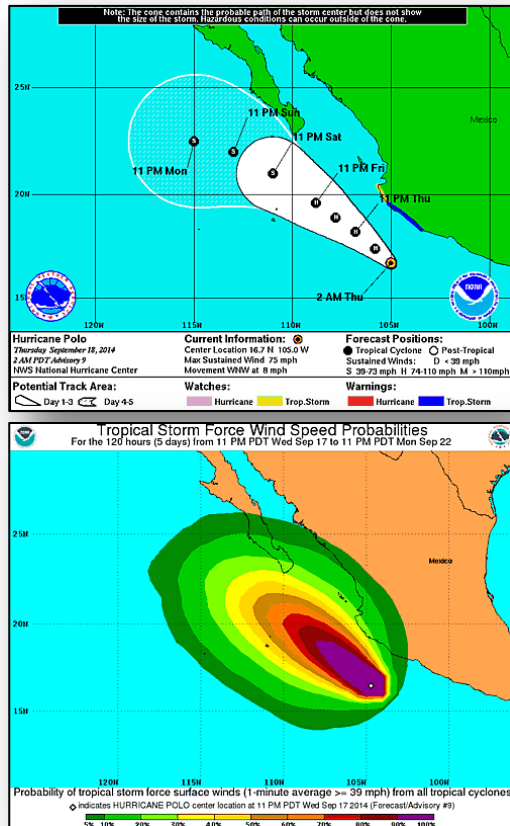
Eastern Pacific – Remnants of Odile



Remnants of Odile (as of 4:00 a.m. EDT) Final Advisory

- Located 25 miles west of Douglas Bisbee, AZ
- Moving E at 14 mph
- Maximum sustained winds 25 mph
- The remnant circulation of Odile continues to move eastward across extreme SE Arizona
- Moderate to heavy rain was reported
- The low-level circulation is expected to dissipate later this morning
- These rains could result in life-threatening flash floods and mudslides, especially in mountainous areas
- Flash Flood Watches and Warnings in effect for Southwest

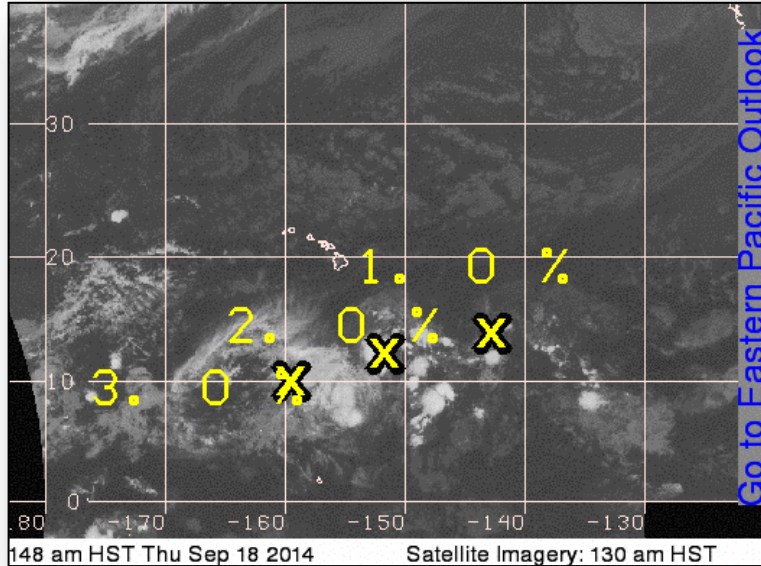
Eastern Pacific – Hurricane Polo



Hurricane Polo (as of 5:00 a.m. EDT)

- Located 165 miles SSW of Manzanillo, Mexico
- Moving WNW at 8 mph
- Turn NW expected later today with NW motion continuing through Saturday
- Will move parallel to southwestern coast of Mexico; any deviation to N of track could bring stronger winds to the coast
- Maximum sustained winds 75 mph
- Some strengthening possible today and tonight; after that, weakening expected
- Hurricane-force winds extend 15 miles
- Tropical storm-force winds extend 80 miles
- No watches or warnings for U.S.

2-Day Tropical Outlook – Central Pacific



Disturbance 1 (as of 8:00 a.m. EDT)

- Located 980 ESE of Hilo, HI
- Moving slowly W
- Formation chance:
 - Next 48 hours: Low (near 0%)

Disturbance 2 (as of 8:00 a.m. EDT)

- Located 560 miles SE of Hilo, HI
- Moving NW at 5 mph
- Formation chance:
 - Next 48 hours: Low (near 0%)

Disturbance 3 (as of 8:00 a.m. EDT)

- Located 790 miles S of Oahu, HI
- Formation chance:
 - Next 48 hours: Low (near 0%)

Flash Flood Risk – Southwest



Current Situation

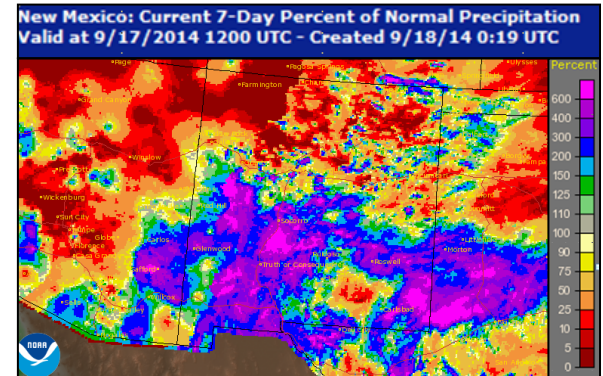
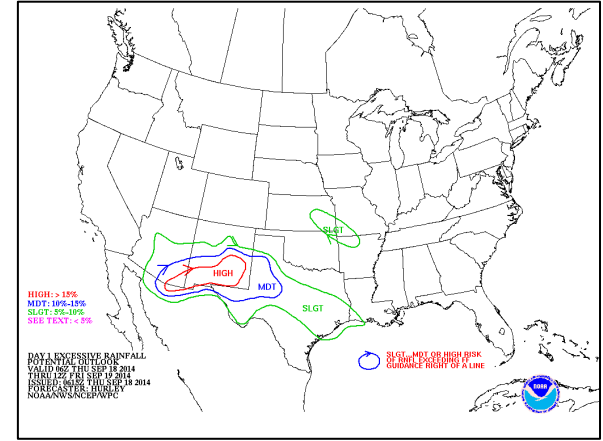
- Remnants of Odile will bring heavy rain and potential for flash flooding to Southwest
- High Risk for flash flooding in portions of AZ and NM through this afternoon
- Flash Flood Watches in effect from central AZ to southern NM and west TX

Potential Impacts

- Life-threatening flash floods, mudslides or debris flows, especially over mountainous terrain and wildfire burn scar areas
- Flooding of homes and businesses in low-lying and flood prone areas possible
- Town of Duncan (pop. 740; near NM/AZ border on the Gila River) protected by older levee; this rain event could significantly stress the levee

Response

- State EOCs in AZ & NM are partially activated; TX EOC at normal operations
- AZ requested USACE technical assistance & Direct Emergency Assistance for levee around Duncan, AZ
- FEMA Region IX at Enhanced Watch
- FEMA Region VI at Watch/Steady State; LNO deployed to NM EOC



King Fire – California



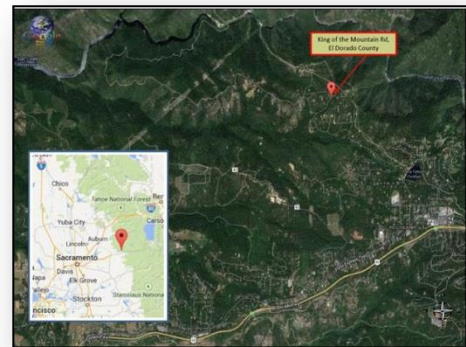
Fire Name	Location	Acres burned	% Contained	Est. Full Containment	FMAG	Structures Lost / Threatened	Fatalities / Injuries
King Fire	El Dorado County	27,930 (15,150)	5%	N/A	FEMA-5081-FM-CA	0 / 3,512 (2,007 homes)	0 / 2

Situation

- Started September 13; burning on Federal, State and private land
- Located near communities of Pollock Pines, Mesquito & Camino (total pop 10k)
- Fire is ¼ to ½ mile from structures
- Threatens homes, power generation facilities, major communications lines, irrigation district primary pipeline, flume & water treatment facilities, and CalFire and emergency communication facilities
- Mandatory & voluntary evacs in effect
- 1 shelter open with 16 occupants *(ARC Midnight Shelter Report, 4Sep 17)*

Response

- Gov declared State of Emergency for El Dorado & Siskiyou counties (for King and Boles fires, respectively)
- CA OES Inland REOC activated at Level 2
- CA State EOC at partial activation (for drought)
- FEMA Region IX remains at Watch/Steady State



FMAG Requests and Declarations



Action (since last report)			Total	FMAG No. and State	
Requests DENIED			0		
Requests APPROVED			1	King Fire, CA Approved September 17, 2014	
Approved FMAG Data					
Year	Current YTD	MTD	Monthly Average	Cumulative Acres Burned YTD	Cumulative Denied FMAGs YTD
2014	31	5	10	134,108	1
Year	Total Previous FY	++ Yearly Average		Total Acres Burned Previous Year	Total Denied FMAGs Previous Year
2013	29	64		374,417	8
* Reflects the 3-year average for current month/ ** Reflects 3-year total average					

Wildfire Summary



Fire Name (County)	FMAG #	Acres Burned	% Contained Est. Containment date	Evacuations (Residents)	Structures Threatened	Structures Destroyed	Fatalities / Injuries
California (3)							
Courtney Fire (Madera County) FINAL	FEMA-5078-FM-CA	320	70% (+20)	Lifted	0 (-400)	49 (-12) (30 homes)	0/ 4 (+2)
King Fire (El Dorado County)	FEMA-5081-FM-CA	27,930 (+15,150)	5%	Mandatory	3,512 (+1,064) (2,007 homes)	0	0/2
Boles Fire (Siskiyou County)	FEMA-5079-FM-CA	375	60% (+35)	Mandatory	1,100 (1,000 homes)	150 (all homes)	0/3
Oregon (1)							
36 Pit Fire (Clackamas County)	FEMA-5080-FM-OR	4,000 (+412)	30% (+23)	Mandatory	168 (mixed homes / businesses)	0	0/1

Disaster Requests & Declarations



Declaration Requests in Process		Requests APPROVED (since last report)	Requests DENIED (since last report)
2	Date Requested	0	0
VT – DR Severe Storms and Flooding	September 5, 2014		
MI – DR Severe Storms and Flooding	September 17, 2014		

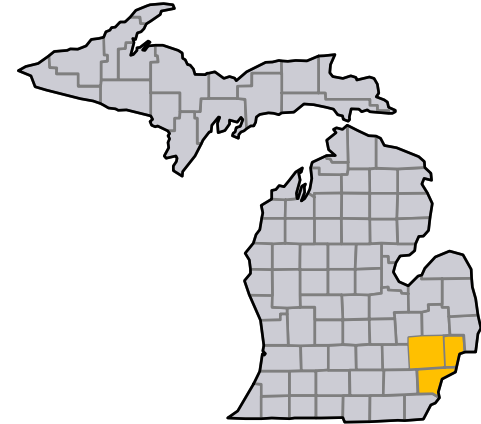
Major Disaster Declaration Request – Michigan




September 17, 2014

- Governor requested a Major Disaster Declaration
- As a result of the severe storms and flooding during the period of August 11-13, 2014
- Requests:
 - IA & PA for Macomb, Oakland & Wayne counties
 - Hazard Mitigation statewide

Michigan

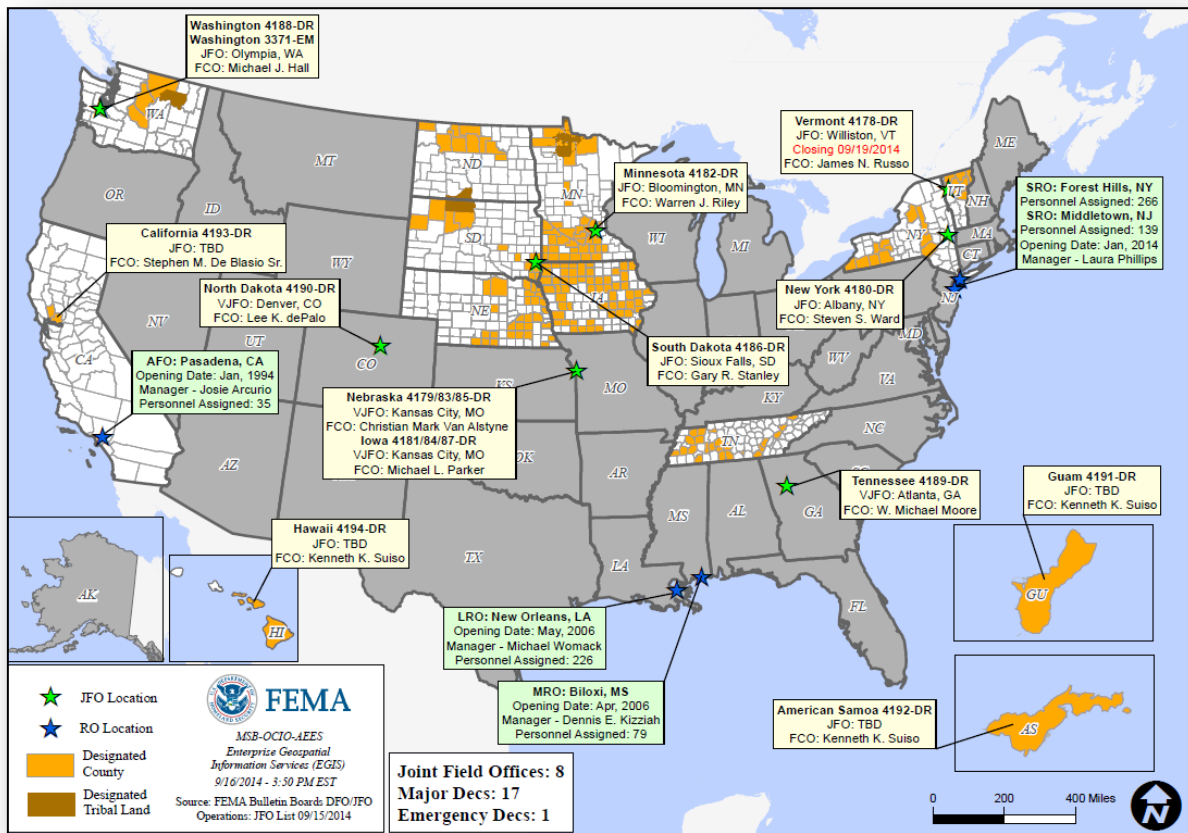


 = Requested counties

Open Field Offices as of September 18



FEMA



Joint Preliminary Damage Assessments

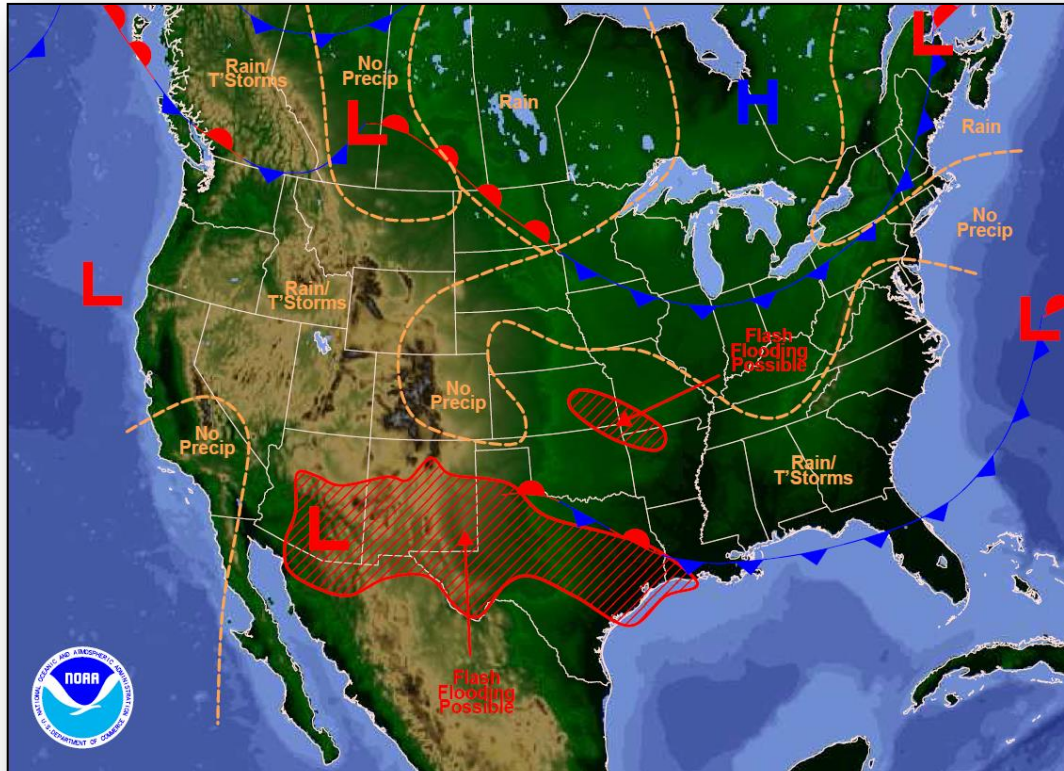


Region	State / Location	Event	IA/PA	Number of Counties		Start – End
				Requested	Complete	
III	MD	Severe Storms August 12, 2014	PA	2	0	9/9 – TBD
VI	NM	Severe Storms & Flooding July 27 – August 5, 2014	PA	7 (-1)	7 (+1)	9/10 – 9/17
VIII	MT	Severe Storms & Flooding August 21 – 28, 2014	PA	6	0	9/22 – 9/26
VIII	ND	Severe Storms & Flooding August 15 – 25, 2014	PA	5	2	9/15 – 9/19
IX	NV	Severe Storms and Flooding September 8, 2014	IA	2	0	9/15 – TBD
			PA	2	0	9/15 – TBD

National Weather Forecast



FEMA

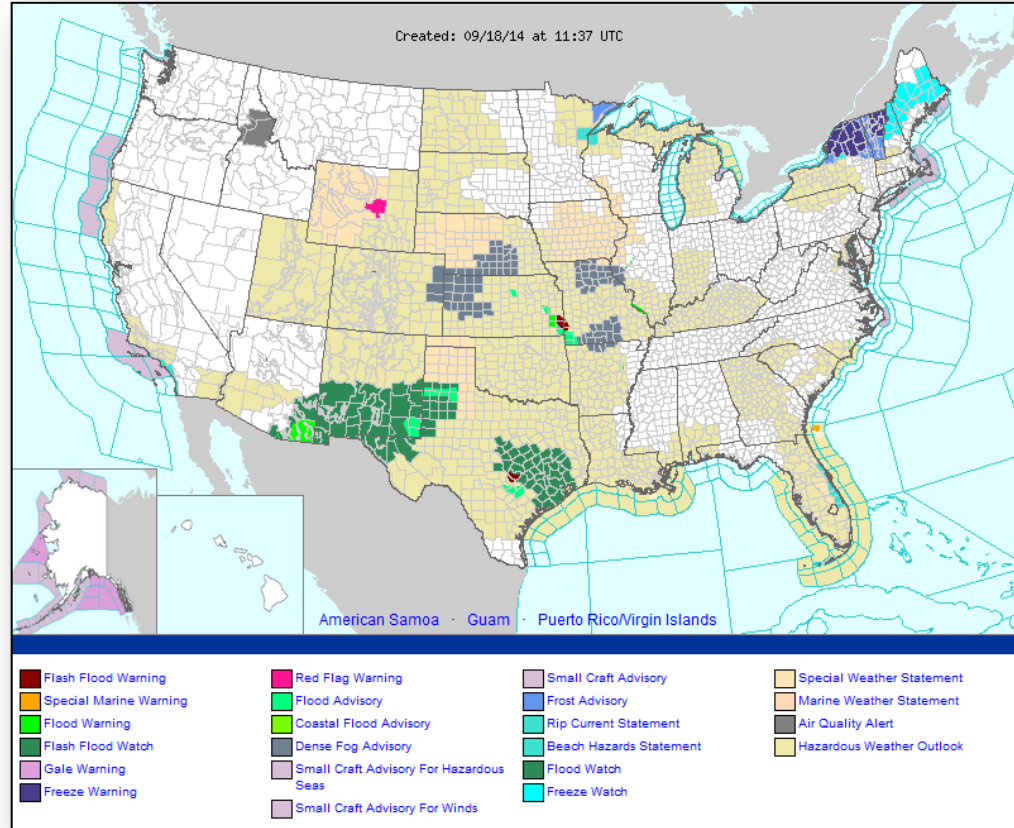


Weather Forecast for Thu, Sep 18, 2014, issued 3:08 AM EDT
DOC/NOAA/NWS/NCEP/Weather Prediction Center
Prepared by McReynolds based on WPC, SPC and NHC forecasts

Active Watches/Warnings



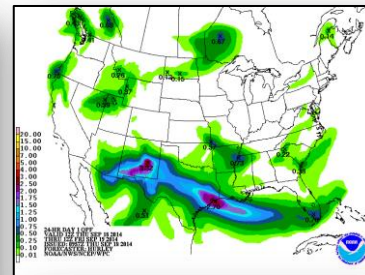
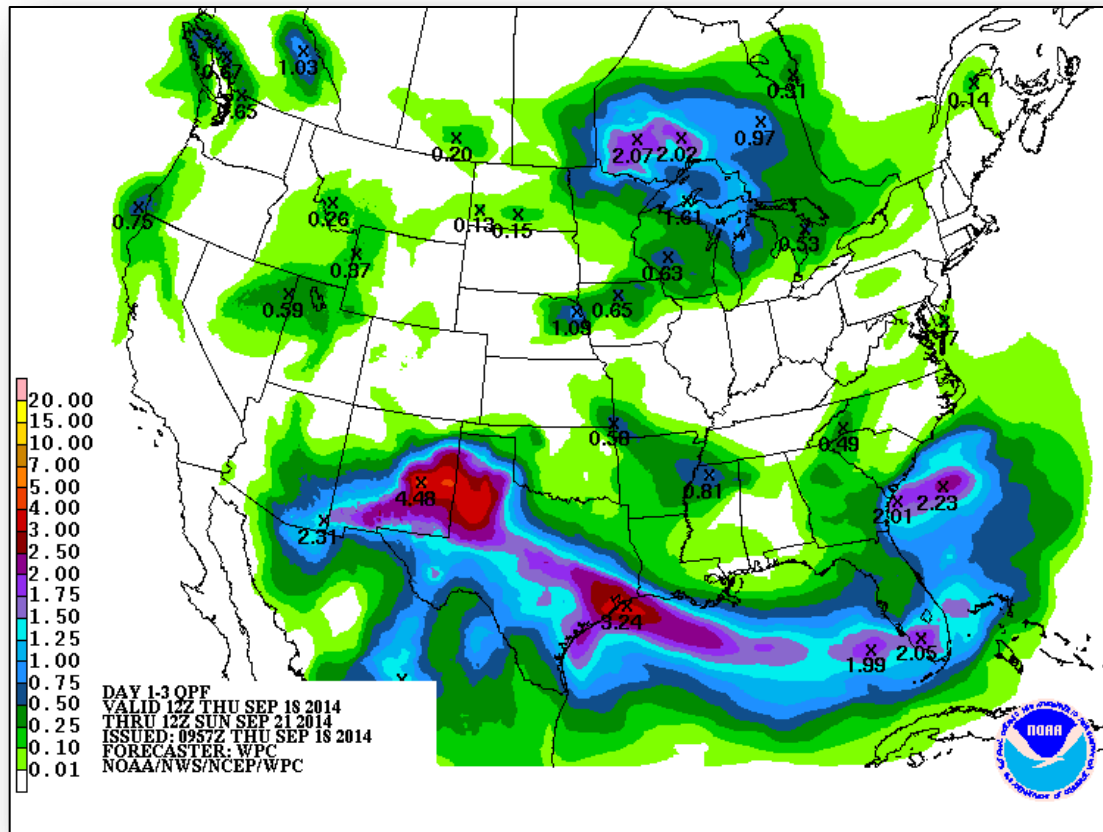
FEMA



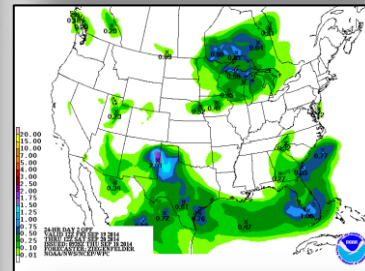
Precipitation Forecast – 3 Day



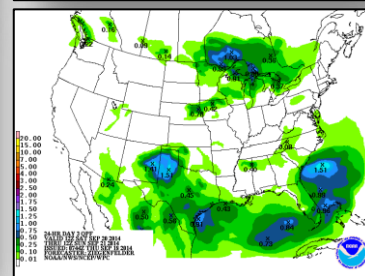
FEMA



Day 1



Day 2

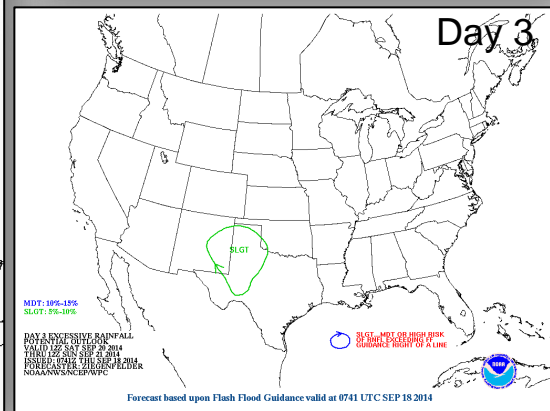
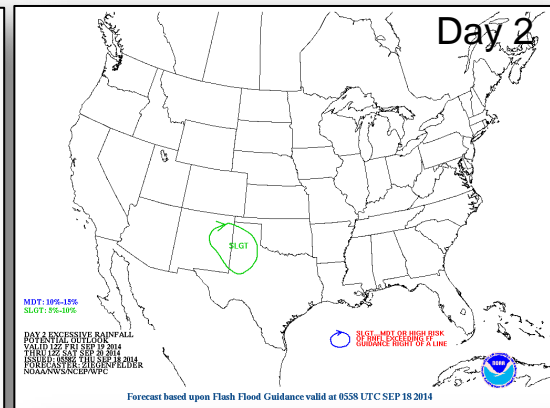
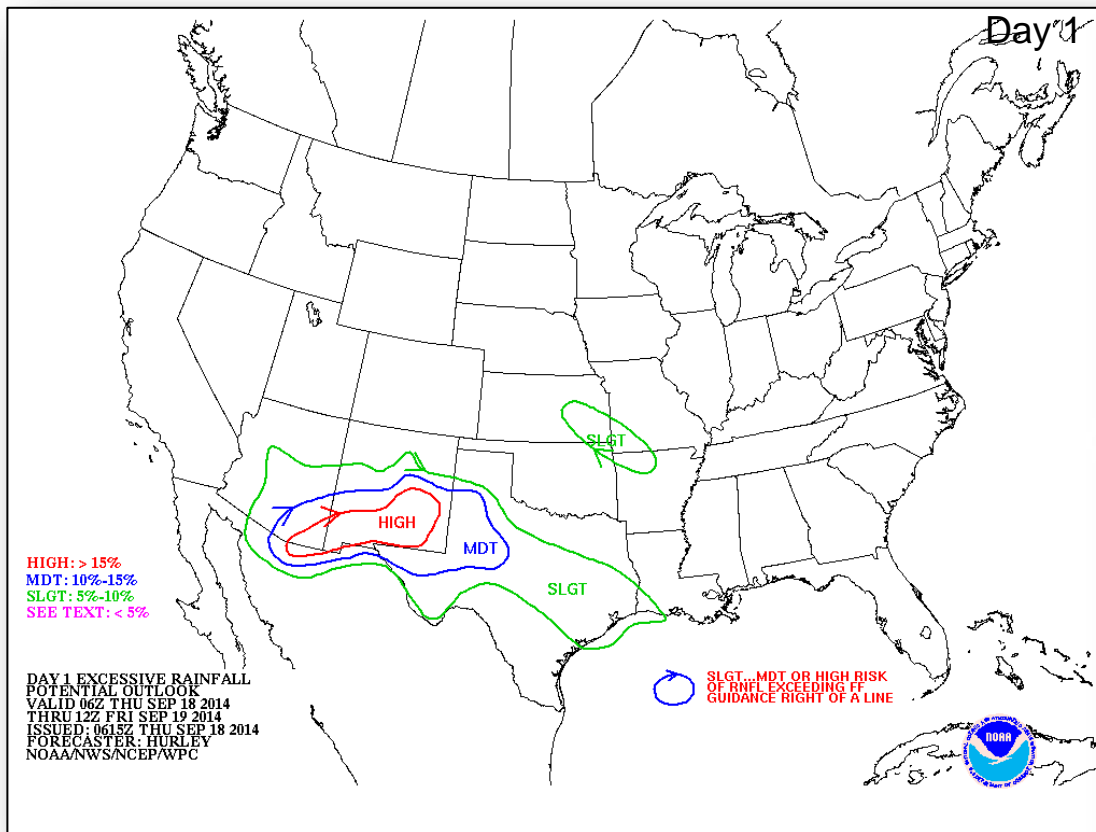


Day 3

Flash Flood Potential Outlook Days 1 – 3



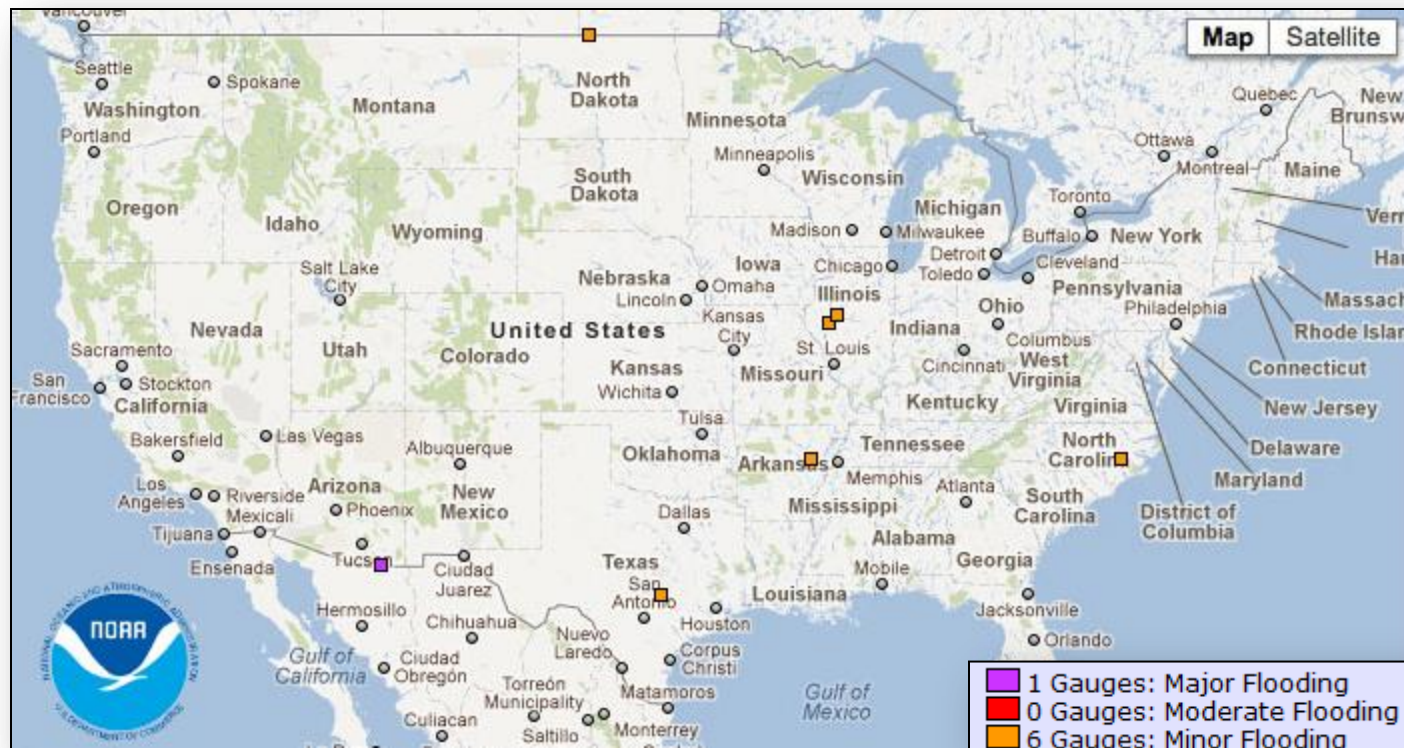
FEMA



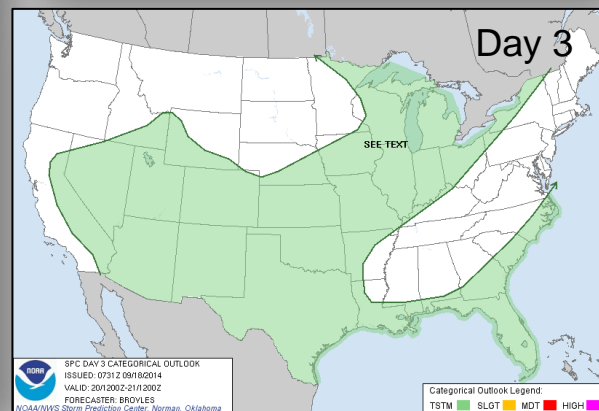
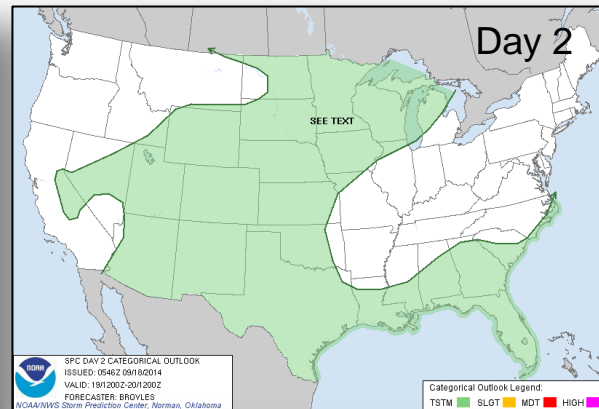
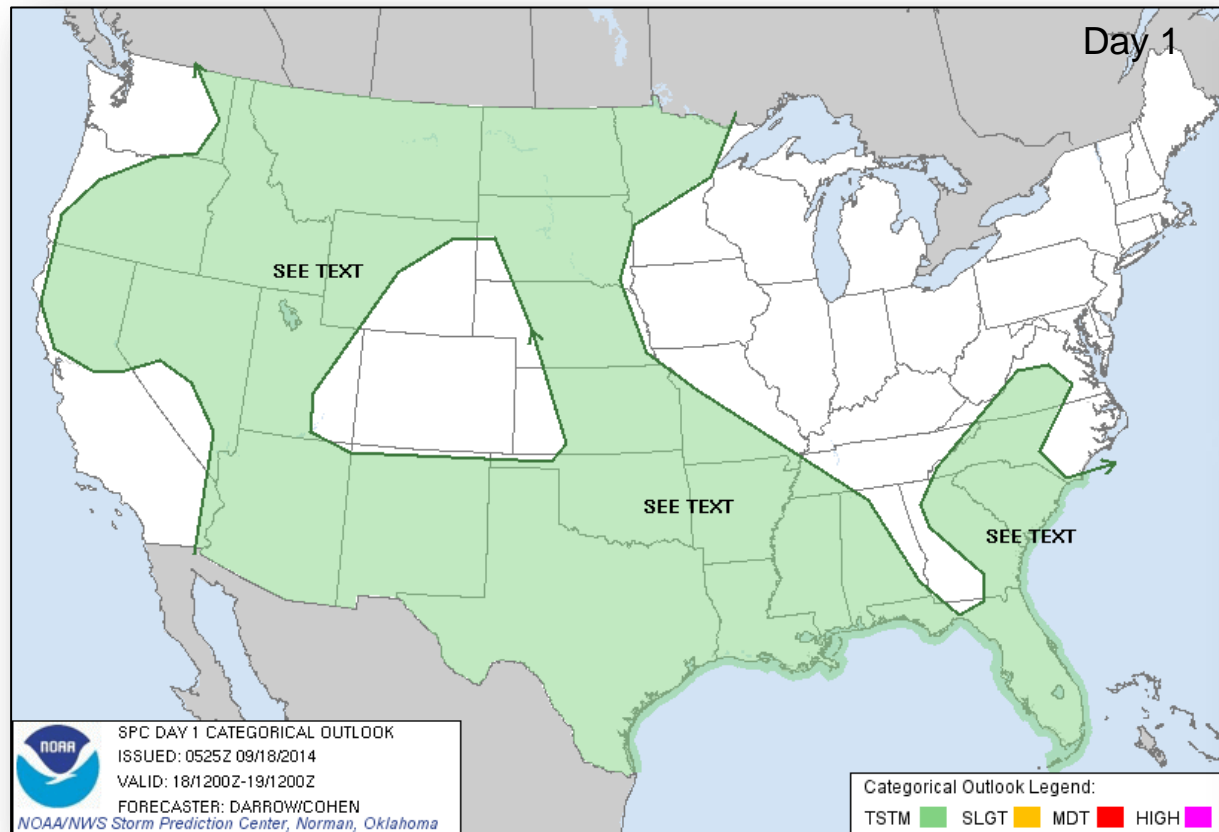
River Forecast



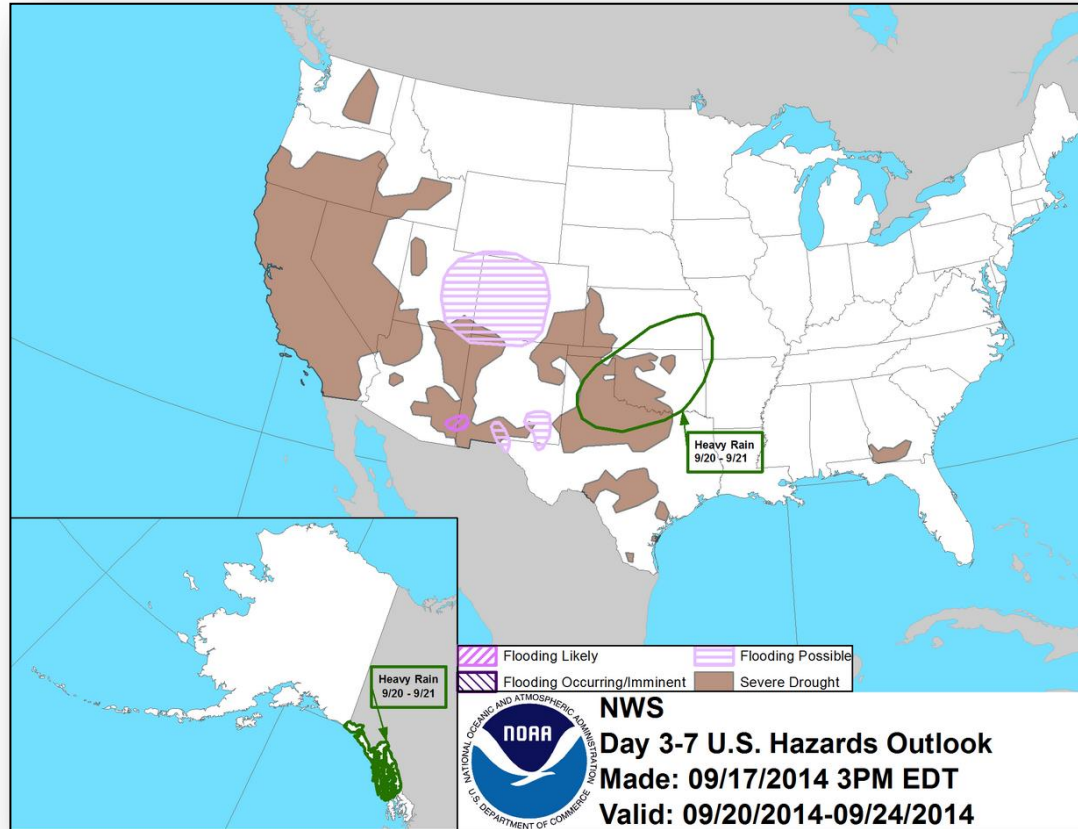
FEMA



Convective Outlook, Days 1 – 3

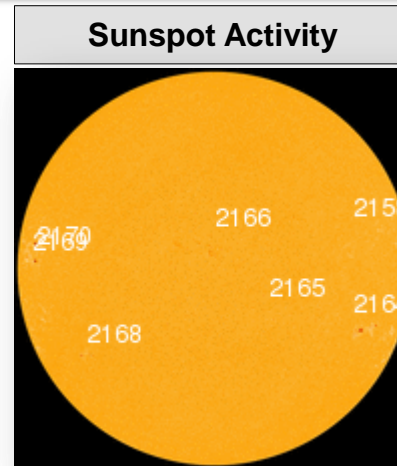
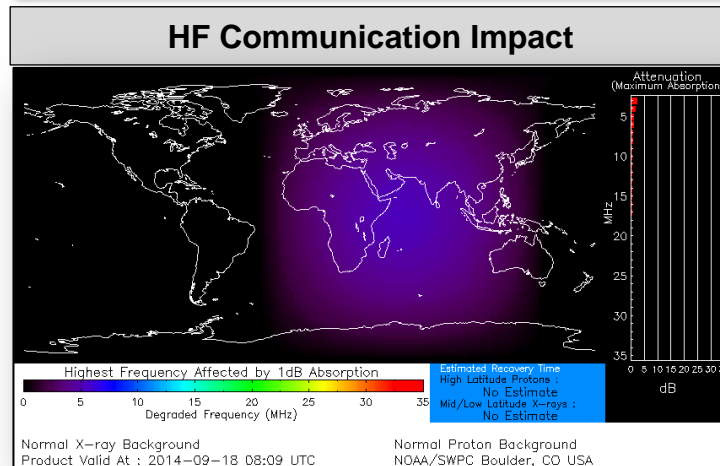


Hazard Outlook: September 20 – 24



Space Weather

NOAA Scales Activity (Range: 1/minor to 5/extreme)	Past 24 Hours	Current	Next 24 Hours
Space Weather Activity:	Minor	None	None
• Geomagnetic Storms	None	None	None
• Solar Radiation Storms	None	None	None
• Radio Blackouts	R1	None	None



FEMA Readiness – Deployable Teams/Assets



Deployable Teams/Assets									
Resource	Status	Total	Available		Partially Available	Not Available	Detailed Deployed Activated	Comments	Rating Criterion
FCO		39	17	44%	0	1	21		OFDC Readiness: FCO Green Yellow Red Type 1 3+ 2 1 Type 2 4+ 3 2 Type 3 4 3 2
FDRC		10	5	50%	0	0	5		<u>FDRC</u> 3 2 1
US&R		28	27	97%	1	1	0	<ul style="list-style-type: none">NM-TF1 (Red for personnel shortages)CA-TF1 (Yellow for logistics & management)	<ul style="list-style-type: none">Green = Available/FMCYellow = Available/PMCRed = Out-of-ServiceBlue = Assigned/Deployed
National IMAT		3	3	100%	0	0	0		<ul style="list-style-type: none">Green: 3 availYellow: 1-2 availRed: 0 avail (<i>Individual N-IMAT red if 50% of Section Chiefs and/or Team Leader is unavailable for deployment.</i>)
Regional IMAT		13	5	38%	3	4	1	<u>Partially Mission Capable (PMC):</u> <ul style="list-style-type: none">Region II, III, VI <u>Not Mission Capable (NMC):</u> <ul style="list-style-type: none">Region V, VII, IX (Team 1), VI (Team 2) <u>Deployed</u> <ul style="list-style-type: none">Region X to WA	<ul style="list-style-type: none">Green: 7 or more availYellow: 4 - 6 teams availableRed: > 8 teams deployed/unavailable <p><i>R-IMAT also red if TL Ops/Log Chief is unavailable and has no qualified replacement.</i></p>
MCOV		60	56	94%	0	4	0		<ul style="list-style-type: none">Green = 80 – 100% availYellow = 60 – 79% availRed = 59% or below availReadiness remains 95%

FEMA Readiness – National/Regional Teams



National/Regional Teams									
Resource	Status	Total	Available		Partially Available	Not Available	Deployed/ Activated	Comments	Rating Criterion
NWC		5	5	100%	0	0	24/7		• Green = FMC • Yellow = PMC • Red = NMC
NRCC		2	344	89%	0	44	Not Activated		
HLT		1	N/A	N/A	0	1	Activated		
DEST							Not Activated		
RRCCs		10	10	100%	0	0	None		
RWCs/MOCs		10	10	100%	0	0	24/7	• Region IX RWC at Enhanced Watch	



FEMA

FEMA's mission is to support our citizens and first responders to ensure that as a nation we work together to build, sustain, and improve our capability to prepare for, protect against, respond to, recover from, and mitigate all hazards.