

The Disaster Center is dedicated to the idea that disaster mitigation is cost effective and individuals pursuing their own interest are the greatest potential force for disaster reduction.

Please consider making a small donation to the Disaster Center



When disaster mitigation is cost effective, we are on the road to bringing disasters to an end.



FEMA

Daily Operations Briefing

Friday, September 19, 2014

8:30 a.m. EDT

Significant Activity: Sep 19 – 20



Significant Events:

- CA & OR Wildfires
- Southwest flooding (FINAL)

Tropical Activity:

- Atlantic – Tropical Storm Edouard; Disturbance 1 (Low, 20%)
- Eastern Pacific – Tropical Storm Polo
- Central Pacific – No tropical cyclones expected through Saturday evening

Significant Weather:

- Flash flooding possible – Southwest to Southern Plains
- Elevated Fire Weather Areas: none; Red Flag Warnings: none
- Space Weather: Past 24 hours: Minor, G1 geomagnetic storms occurred; Next 24 hours: predicted to be minor, G1 geomagnetic storms expected

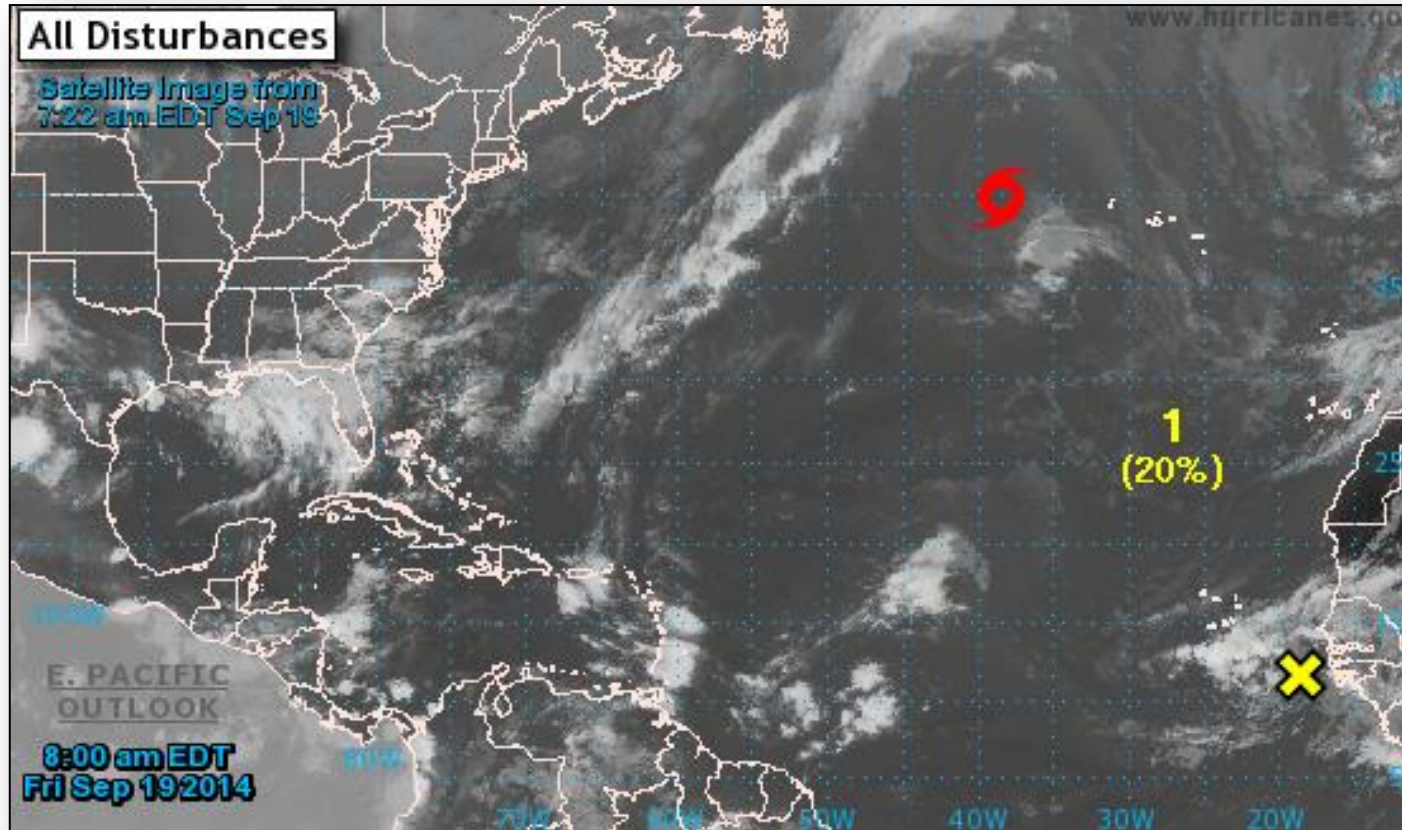
FEMA Readiness: No significant activity

Declaration Activity: None

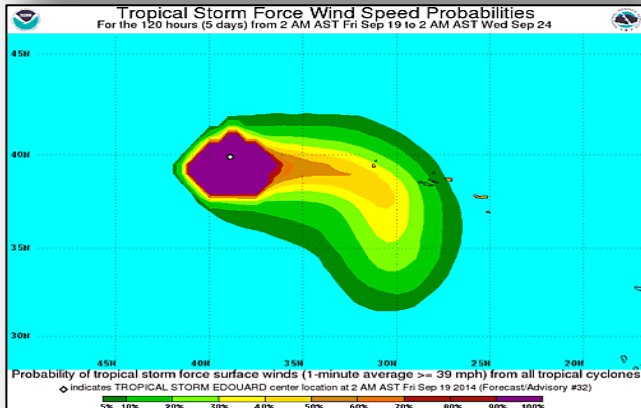
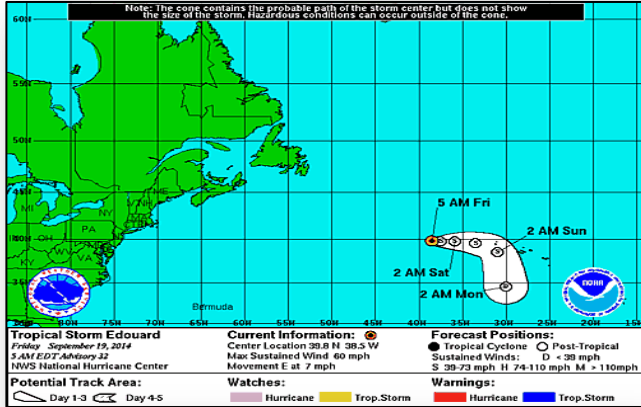
2-Day Tropical Outlook – Atlantic



FEMA



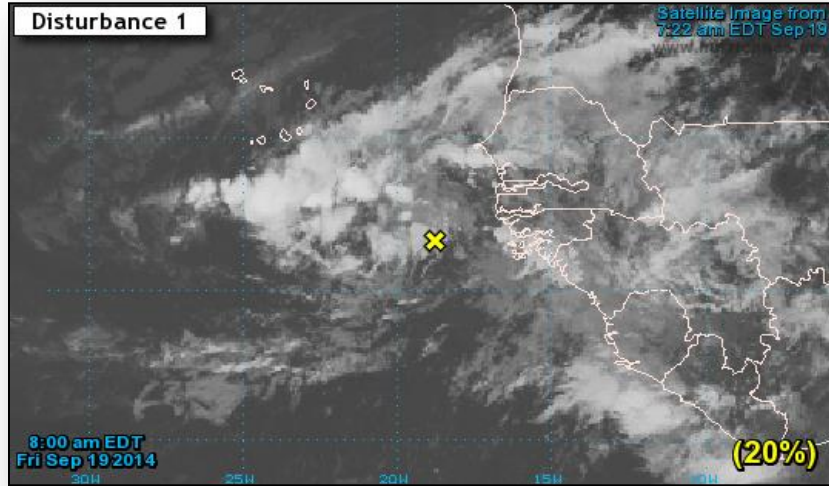
Atlantic – Tropical Storm Edouard



Tropical Storm Edouard (as of 5:00 a.m. EDT)

- Located 530 miles WNW of Fayal Island in western Azores
- Moving E at 17 mph
- This general motion expected to continue next day or so with turn SE anticipated by Sunday
- Maximum sustained winds 60 mph
- Weakening expected next 48 hours
- Forecast to become post-tropical cyclone later today
- Tropical storm force winds extend 185 miles
- No coastal watches or warnings in effect

2 – Day Tropical Outlook - Atlantic



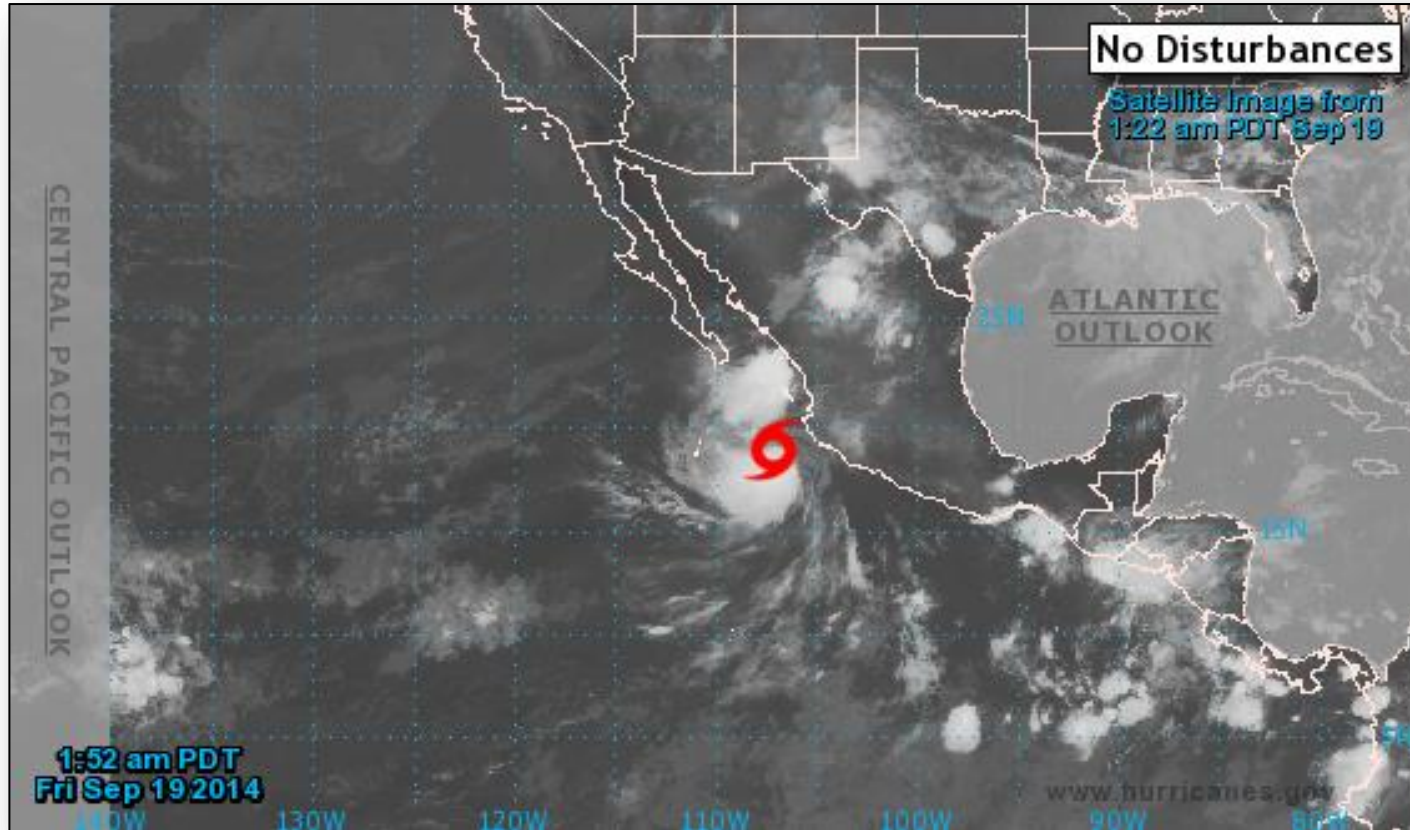
Disturbance 1 (as of 8:00 a.m. EDT)

- Located between the west coast of Africa and the Cape Verde Islands
- Moving slowly WNW
- Forecast to become less conducive by early next week
- Development of this system is possible over the next few days
- Formation chance:
 - Next 48 hours: Low (20%)
 - Next 5 days: Medium (30%)

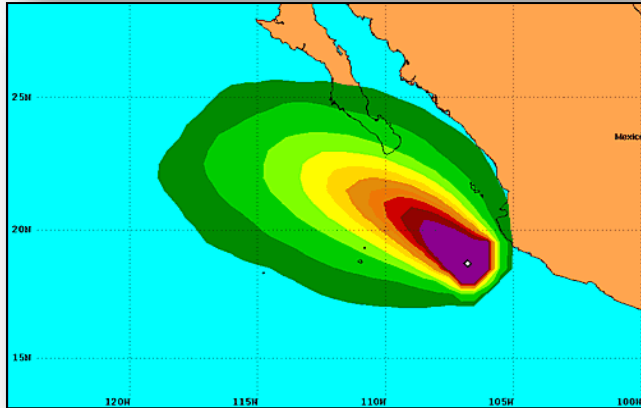
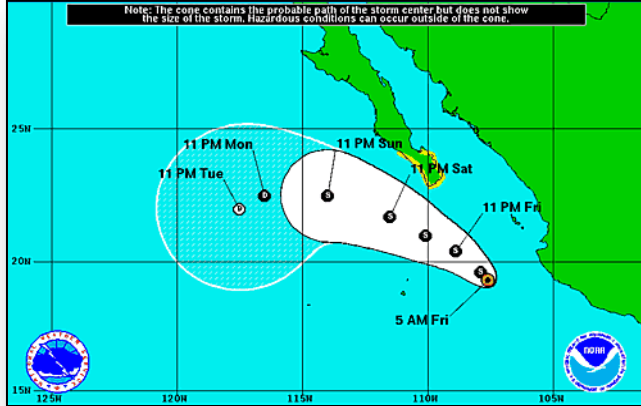
2-Day Tropical Outlook – Eastern Pacific



FEMA



Eastern Pacific – Tropical Storm Polo



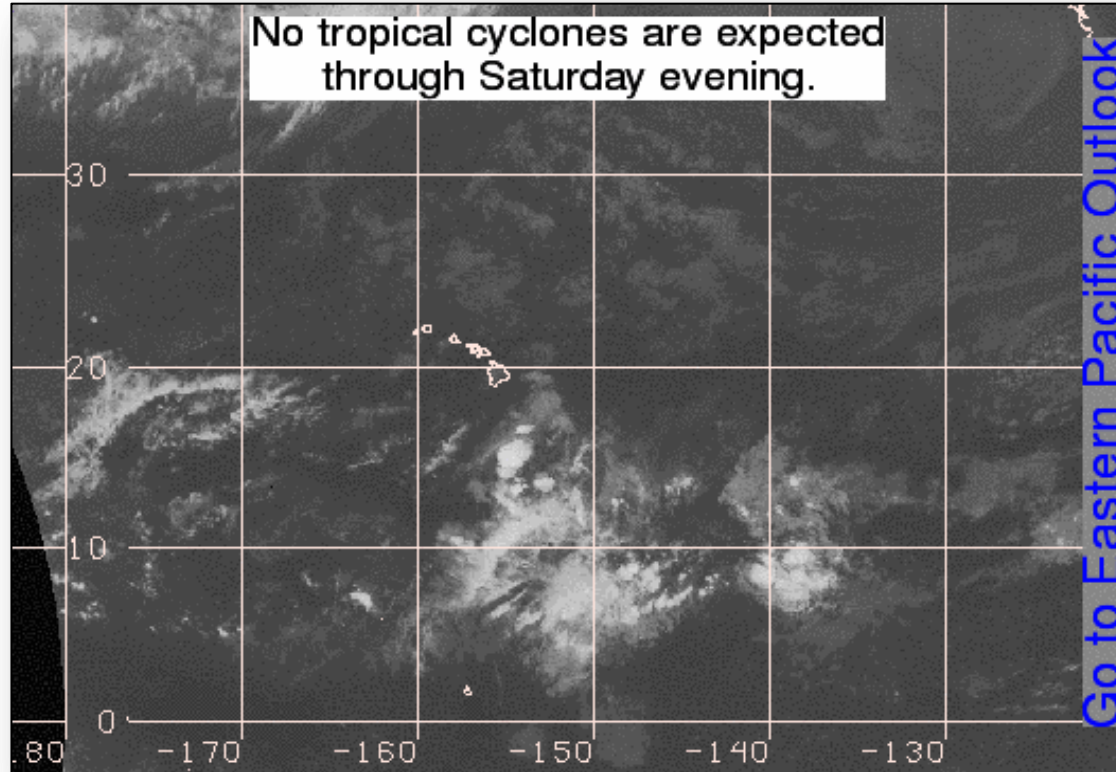
Tropical Storm Polo (as of 8:00 a.m. EDT)

- Located 155 miles SW of Cabo Corrientes, Mexico
- Moving NW at 8 mph
- This general motion with decrease in forward speed expected through today
- Turn WNW expected on Saturday
- Center will continue to move parallel to southwestern coast of Mexico today and pass south of Baja California Peninsula on Saturday
- Maximum sustained winds 70 mph
- Slow weakening expected next 48 hours
- Tropical storm force winds extend 105 miles
- No watches or warnings for U.S.

2-Day Tropical Outlook – Central Pacific



FEMA



Flash Flood Risk – Southwest - FINAL



Current Situation

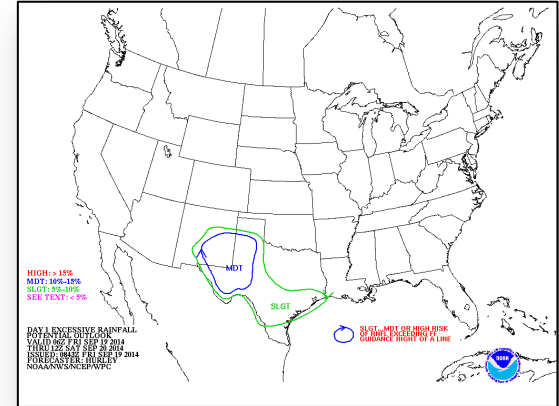
- Remnants of Odile produced total rainfall amounts of 2-4 inches with local amounts up to 6 inches across southern NM and western TX panhandle
- Weather and flooding conditions steadily returning to safe levels in AZ; highest total rainfall amounts in AZ was 3.3 inches near Douglas

Impacts

- Southeast AZ sustained greatest impacts (Santa Cruz, Cochise, Graham & Greenlee counties); damages being assessed as waters recede; response activity within capabilities of local responders
- In TX, no widespread significant residential flooding
- No shortfalls or limitations reported in AZ, NM or TX

Response

- AZ EOC returned to normal operations; NM EOC partially activated; TX EOC at normal operations
- FEMA Region IX RWC will return to Watch/Steady State today
- FEMA Region VI at Watch/Steady State; LNO deployed to NM EOC



Wildfire Summary



Fire Name (County)	FMAG #	Acres Burned	% Contained Est. Containment date	Evacuations (Residents)	Structures Threatened	Structures Destroyed	Fatalities / Injuries
California (2)							
King Fire (El Dorado County)	FEMA-5081-FM-CA	73,184 (+45,254)	10% (+5)	Mandatory	21,000 (+17,488) (12,000 homes)	0	0/2
Boles Fire (Final) (Siskiyou County)	FEMA-5079-FM-CA	479 (+104)	85% (+25)	Mandatory	1,100 (1,000 homes)	150 (all homes)	0/4 (+1)
Oregon (1)							
36 Pit Fire (Clackamas County)	FEMA-5080-FM-OR	4,000	30%	Voluntary	168 (mixed homes / businesses)	0	0/1

Disaster Requests & Declarations

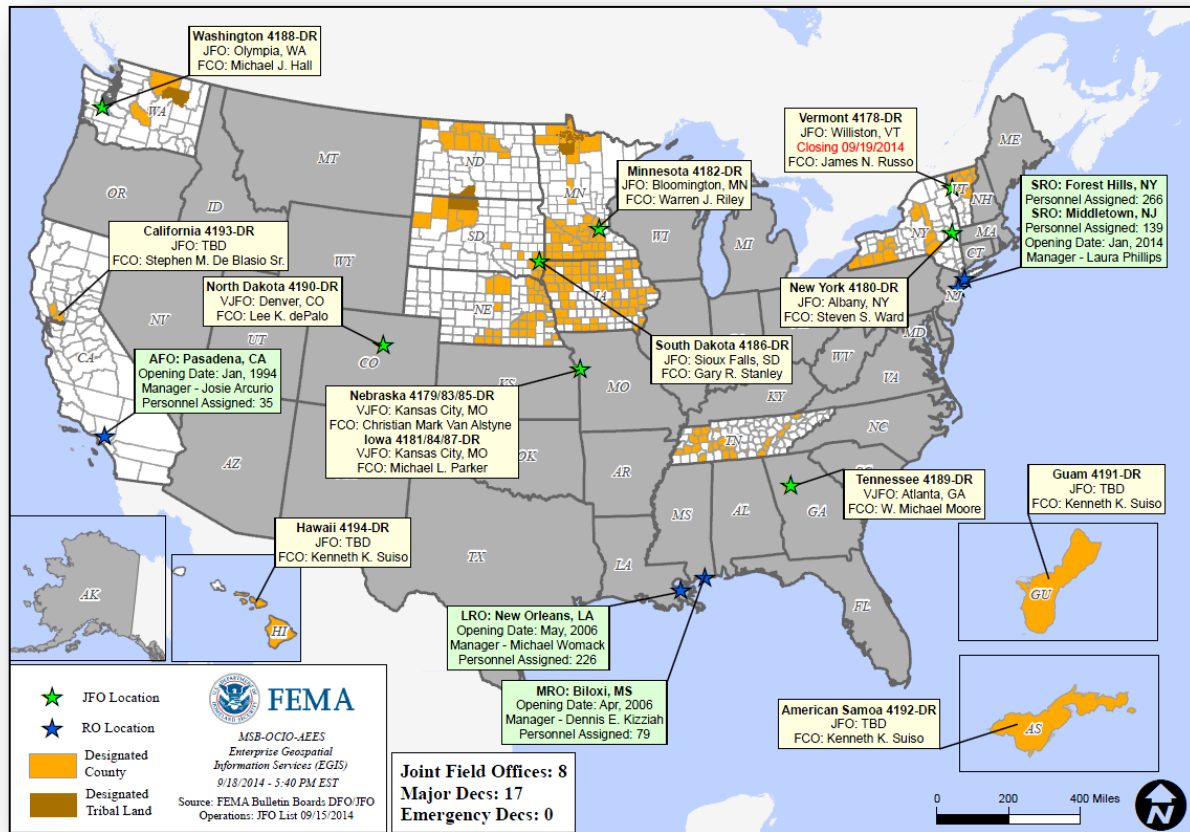


Declaration Requests in Process		Requests APPROVED (since last report)	Requests DENIED (since last report)
2	Date Requested	0	0
VT – DR Severe Storms and Flooding	September 5, 2014		
MI – DR Severe Storms and Flooding	September 17, 2014		

Open Field Offices as of September 18



FEMA

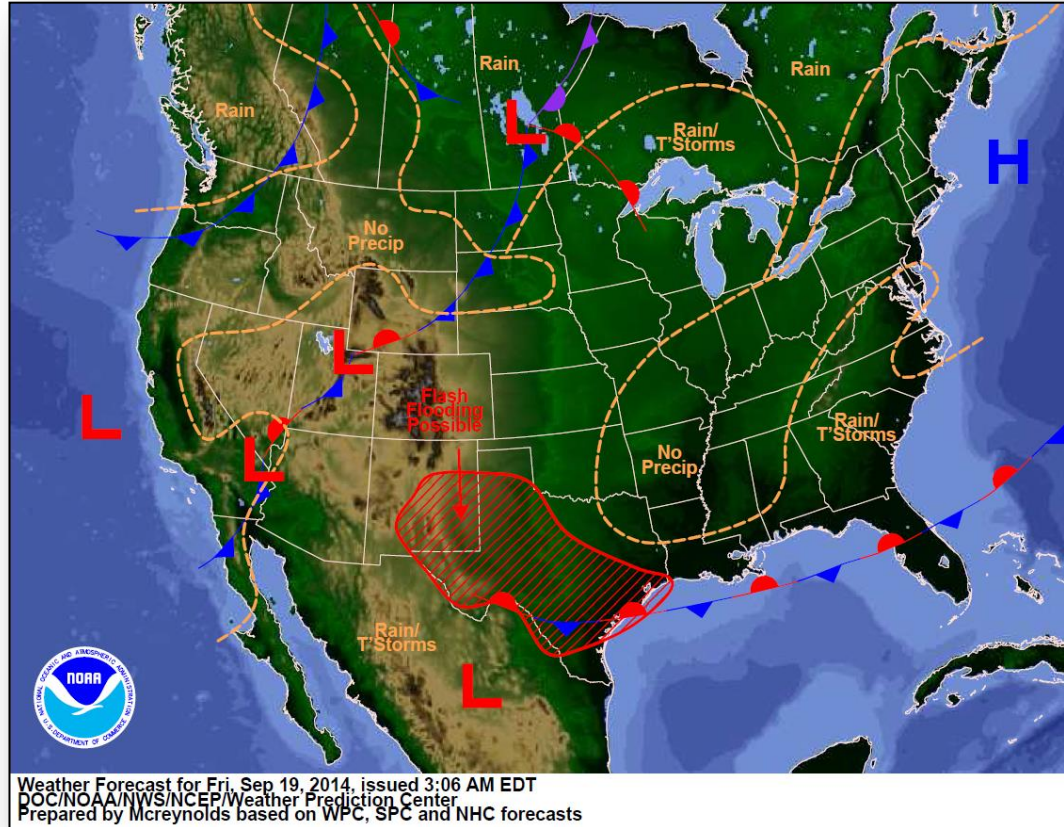


Joint Preliminary Damage Assessments



Region	State / Location	Event	IA/PA	Number of Counties		Start – End
				Requested	Complete	
II	NY	Heavy Rainfall & Flooding August 12-13, 2014	PA	1	0	9/18 – TBD
III	MD	Severe Storms August 12, 2014	PA	2	0	9/9 – TBD
VIII	MT	Severe Storms & Flooding August 21 – 28, 2014	PA	6	0	9/22 – 9/26
VIII	ND	Severe Storms & Flooding August 15 – 25, 2014	PA	5	5	9/15 – 9/18
IX	NV	Severe Storms and Flooding September 8, 2014	IA	2	0	9/15 – TBD
			PA	2	0	9/15 – TBD

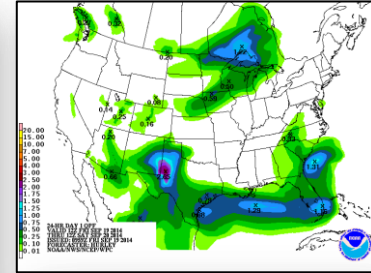
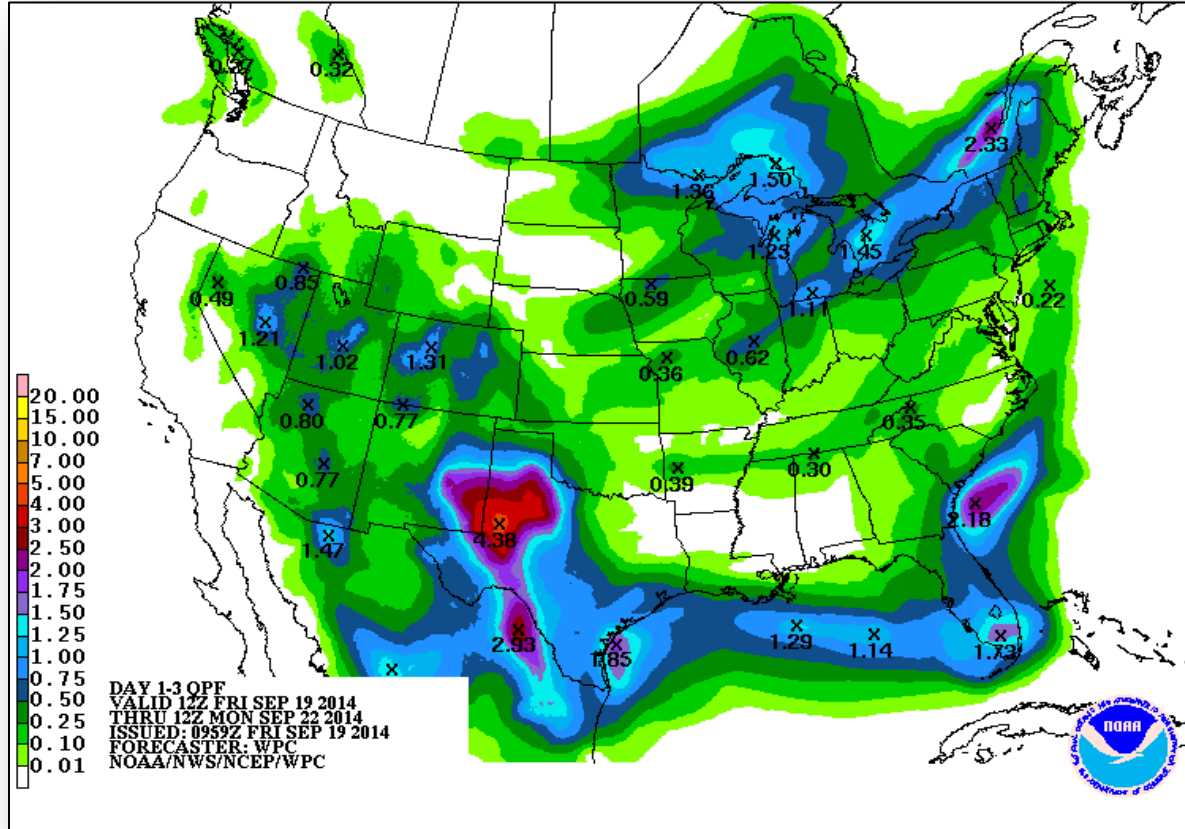
National Weather Forecast



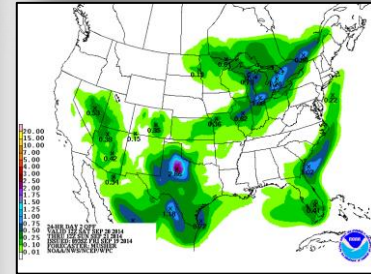
Precipitation Forecast – 3 Day



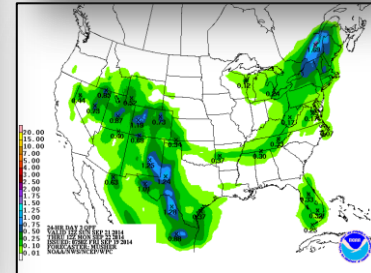
FEMA



Day 1



Day 2

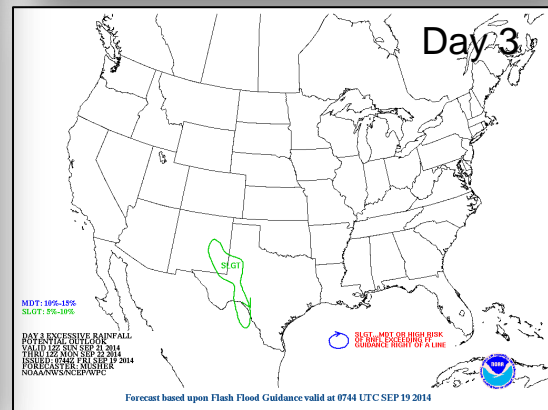
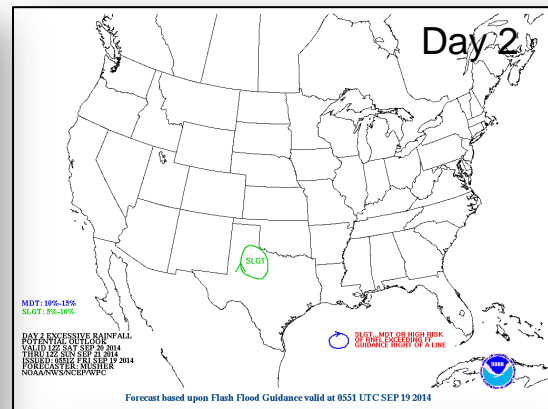
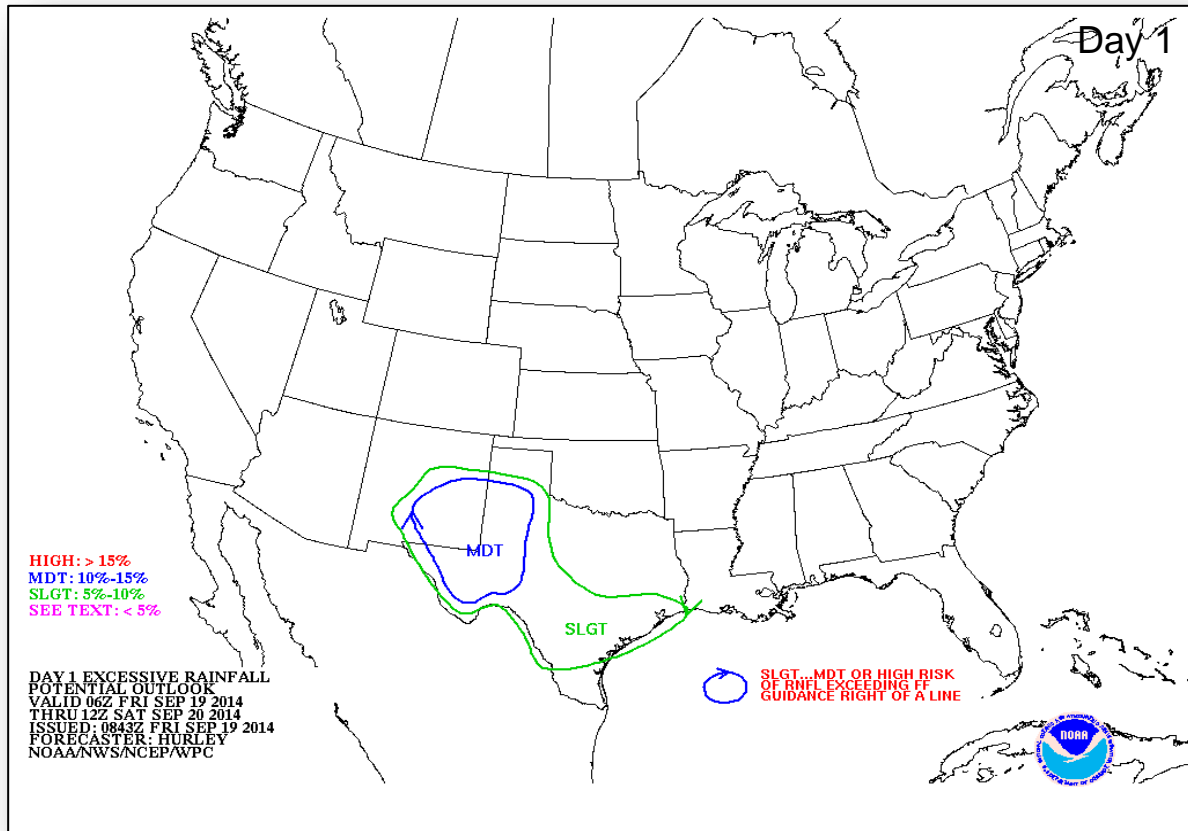


Day 3

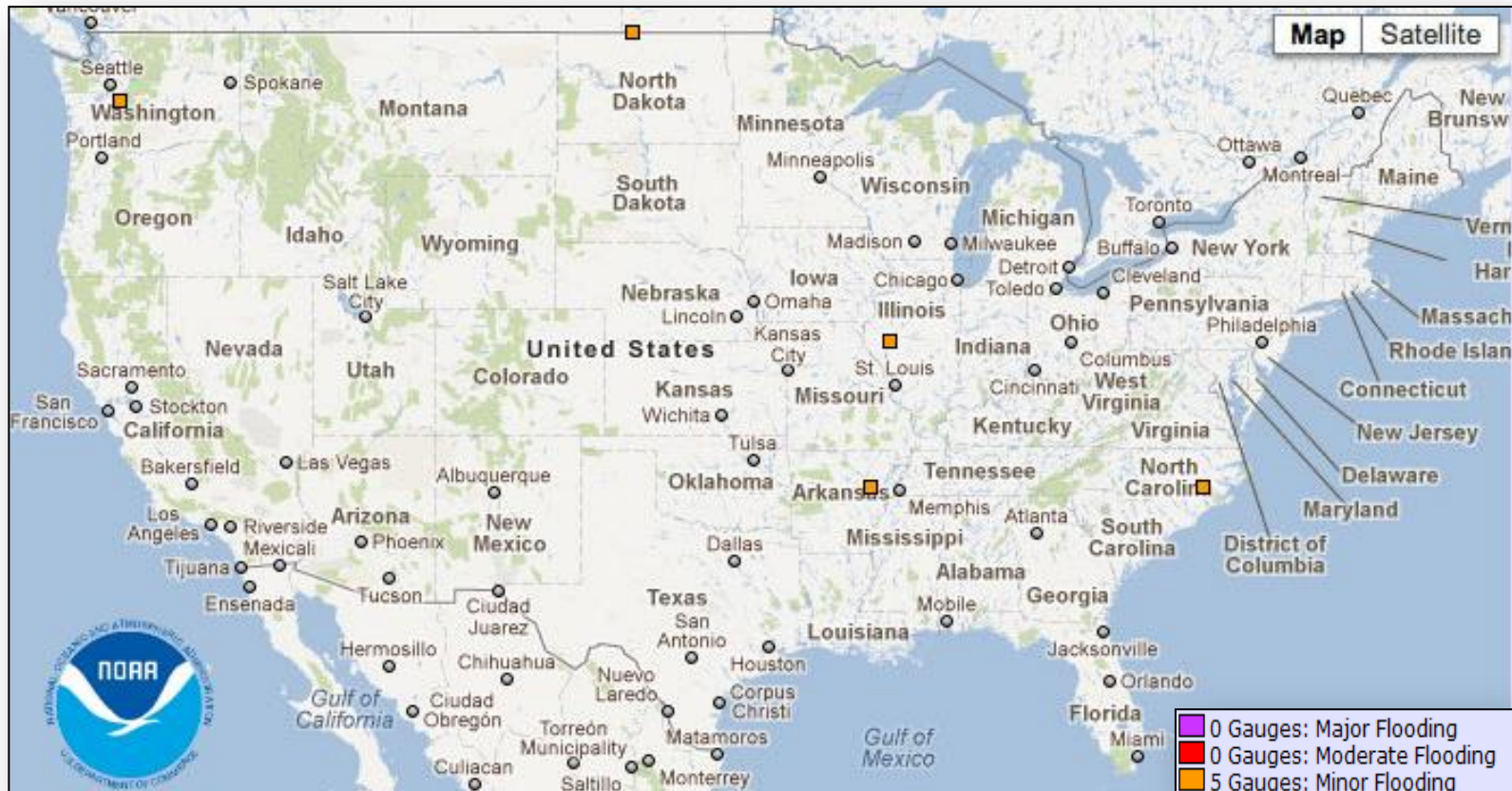
Flash Flood Potential Outlook Days 1 – 3



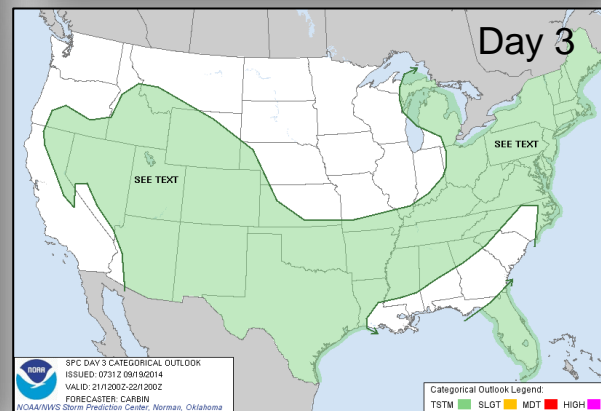
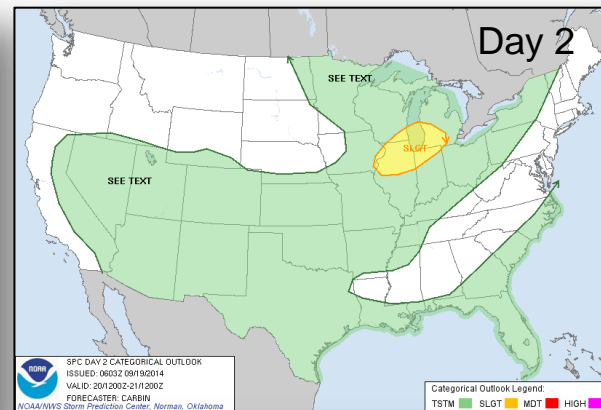
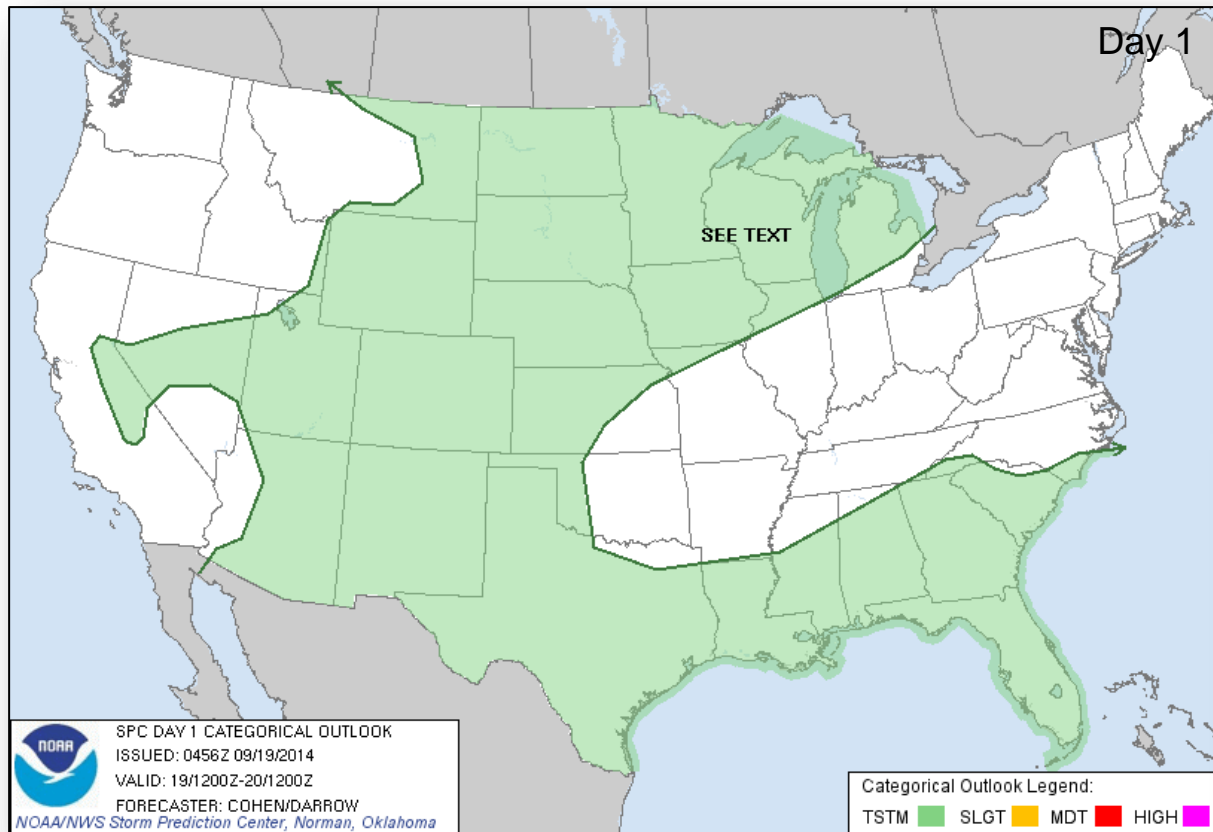
FEMA



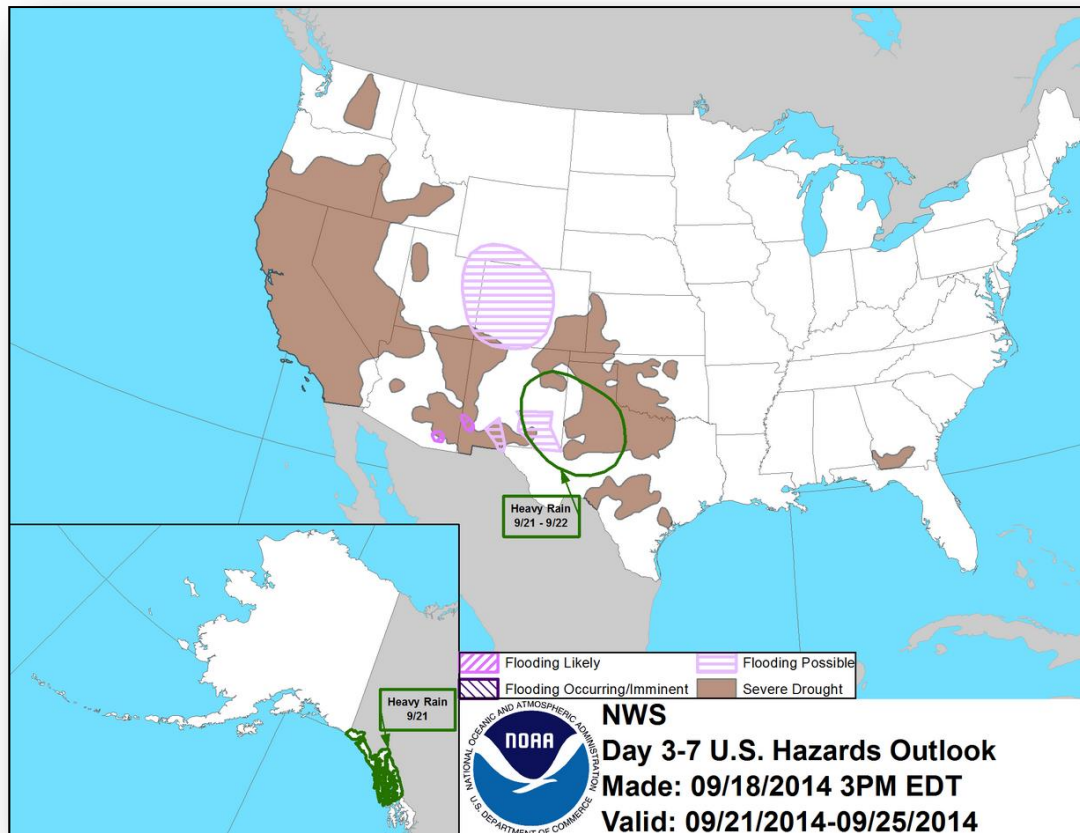
River Forecast



Convective Outlook, Days 1 – 3



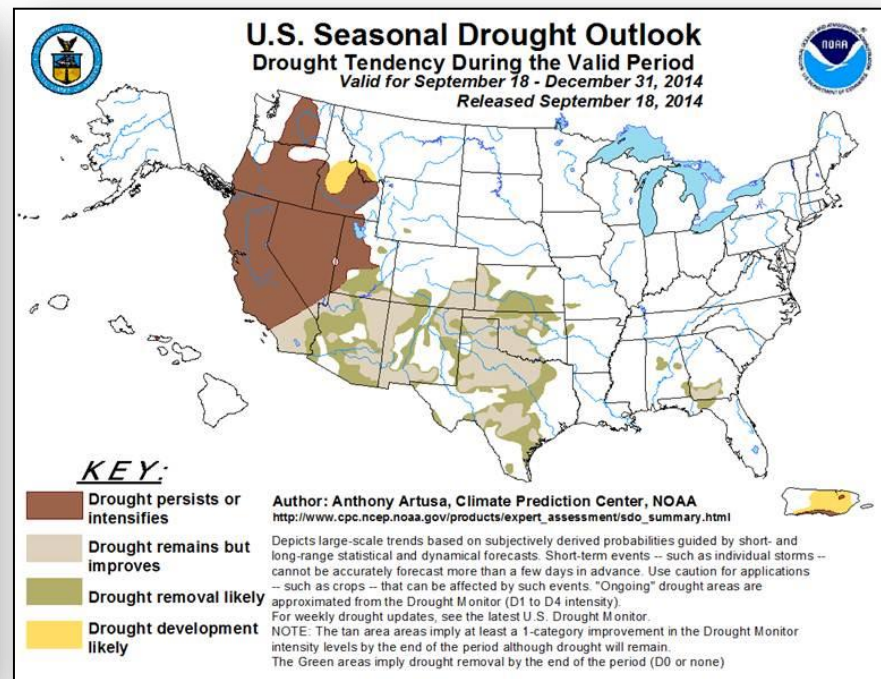
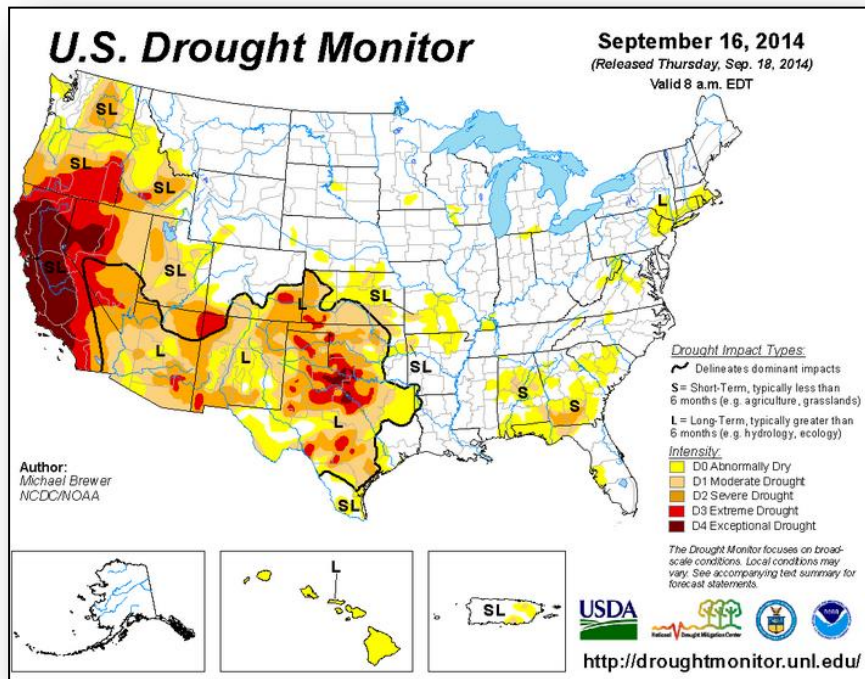
Hazard Outlook: September 21 – 25



U.S. Drought Monitor



FEMA



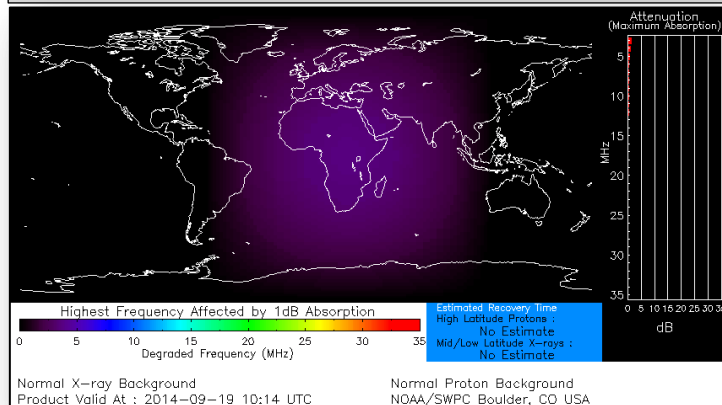
Space Weather



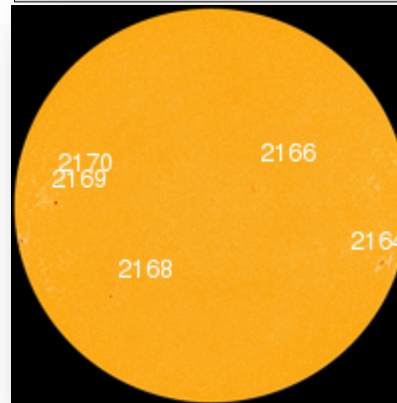
FEMA

NOAA Scales Activity (Range: 1/minor to 5/extreme)	Past 24 Hours	Current	Next 24 Hours
Space Weather Activity:	Minor	None	Minor
• Geomagnetic Storms	G1	None	G1
• Solar Radiation Storms	None	None	None
• Radio Blackouts	None	None	None

HF Communication Impact



Sunspot Activity



FEMA Readiness – Deployable Teams/Assets



Deployable Teams/Assets									
Resource	Status	Total	Available		Partially Available	Not Available	Detailed Deployed Activated	Comments	Rating Criterion
FCO		39	17	44%	0	1	21		OFDC Readiness: FCO Green Yellow Red Type 1 3+ 2 1 Type 2 4+ 3 2 Type 3 4 3 2
FDRC		10	5	50%	0	0	5		FDRC 3 2 1
US&R		28	27	97%	1	1	0	<ul style="list-style-type: none">NM-TF1 (Red for personnel shortages)CA-TF1 (Yellow for logistics & management)	<ul style="list-style-type: none">Green = Available/FMCYellow = Available/PMCRed = Out-of-ServiceBlue = Assigned/Deployed
National IMAT		3	3	100%	0	0	0		<ul style="list-style-type: none">Green: 3 availYellow: 1-2 availRed: 0 avail (<i>Individual N-IMAT red if 50% of Section Chiefs and/or Team Leader is unavailable for deployment.</i>)
Regional IMAT		13	6	46%	3	3	1	<u>Partially Mission Capable (PMC):</u> <ul style="list-style-type: none">Region II, III, VI <u>Not Mission Capable (NMC):</u> <ul style="list-style-type: none">Region V, VII, IX (Team 1) <u>Deployed</u> <ul style="list-style-type: none">Region X to WA	<ul style="list-style-type: none">Green: 7 or more availYellow: 4 - 6 teams availableRed: > 8 teams deployed/unavailable <i>R-IMAT also red if TL Ops/Log Chief is unavailable and has no qualified replacement.</i>
MCOV		60	56	94%	0	4	0		<ul style="list-style-type: none">Green = 80 – 100% availYellow = 60 – 79% availRed = 59% or below availReadiness remains 95%

FEMA Readiness – National/Regional Teams



National/Regional Teams									
Resource	Status	Total	Available		Partially Available	Not Available	Deployed/ Activated	Comments	Rating Criterion
NWC		5	5	100%	0	0	24/7		<div>• Green = FMC</div> <div>• Yellow = PMC</div> <div>• Red = NMC</div>
NRCC		2	344	89%	0	44	Not Activated		
HLT		1	N/A	N/A	0	1	Activated		
DEST							Not Activated		
RRCCs		10	10	100%	0	0	None		
RWCs/MOCs		10	10	100%	0	0	24/7	<div>• Region IX RWC returns to normal operations today</div>	



FEMA

FEMA's mission is to support our citizens and first responders to ensure that as a nation we work together to build, sustain, and improve our capability to prepare for, protect against, respond to, recover from, and mitigate all hazards.