

The Disaster Center is dedicated to the idea that disaster mitigation is cost effective and individuals pursuing their own interest are the greatest potential force for disaster reduction.

Please consider making a small donation to the Disaster Center



When disaster mitigation is cost effective, we are on the road to bringing disasters to an end.



FEMA

Daily Operations Briefing

Saturday, September 19, 2015

8:30 a.m. EDT

Significant Activity: Sep 18 – 19



Significant Events:

- CA Wildfires

Tropical Activity:

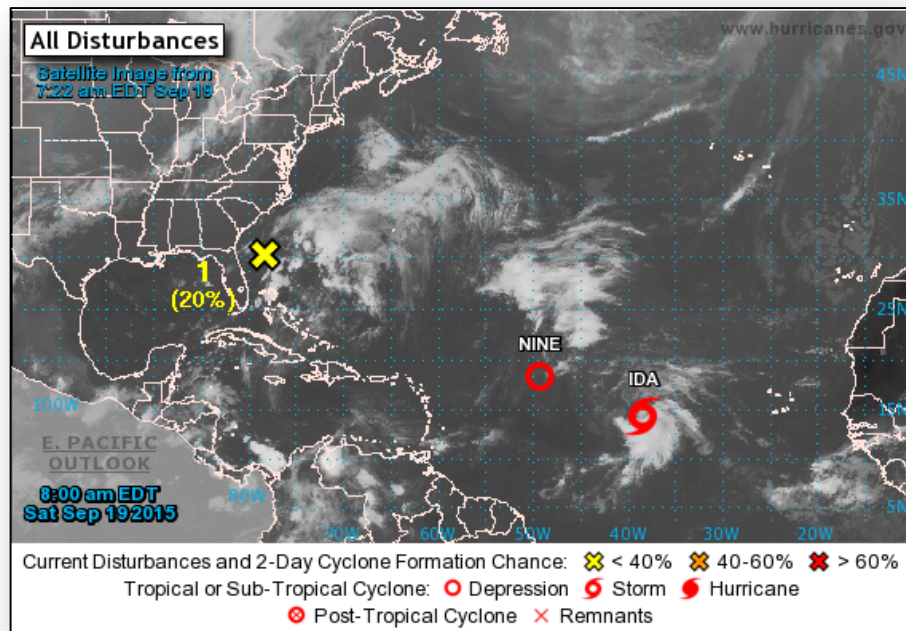
- Atlantic: Tropical: Tropical Storm Ida; Tropical Depression Nine; Disturbance 1 – Low (20%)
- Eastern Pacific: Disturbance 1 – Medium (50%)
- Central Pacific: Tropical Depression Five-C
- Western Pacific: Typhoon 20W (Krovanh); Area of convection - Low

Significant Weather:

- Rain and thunderstorms – Southwest to Great Lakes & Northeast; Florida to coastal Carolinas
- Flash flooding possible – Southwest & Southern Plains
- Red Flag Warnings – CO
- Critical/Elevated Fire Weather areas – none
- Space weather: past 24 hours – minor, G1 geomagnetic storms occurred; next 24 hours – minor, G1 geomagnetic storms predicted

Declaration Activity: none

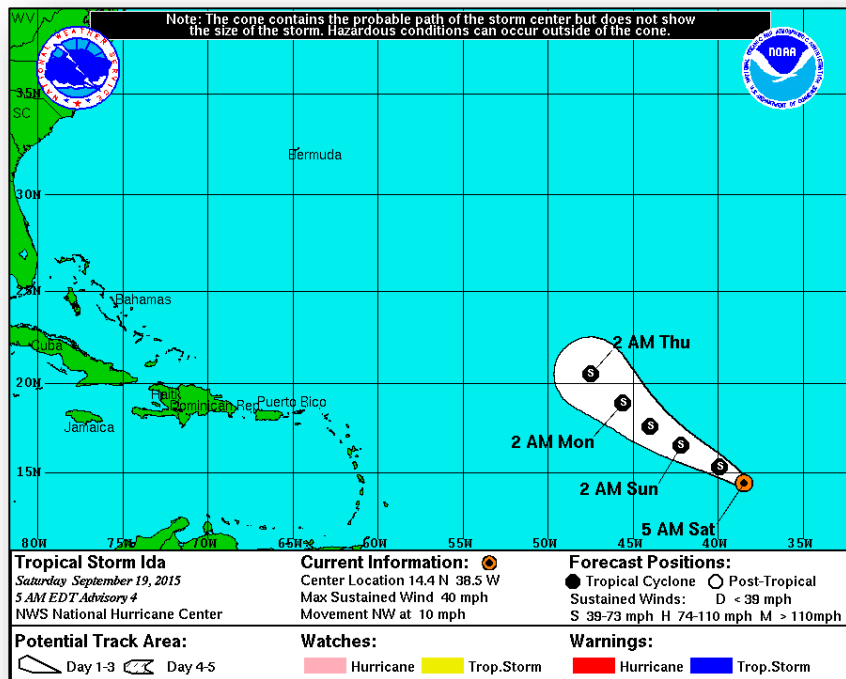
2-Day Tropical Outlook – Atlantic



Disturbance 1: (as of 8:00 a.m. EDT)

- Located 200 miles E of northeast FL coast
- Moving NE off southeast coast of U.S.
- Conditions expected to be somewhat conducive to acquire subtropical or tropical characteristics next few days
- Locally heavy rains are possible over Florida, Georgia and South Carolina
- Formation chance through 48 hours: Low (20%)
- Formation chance through 5 days: Medium (40%)

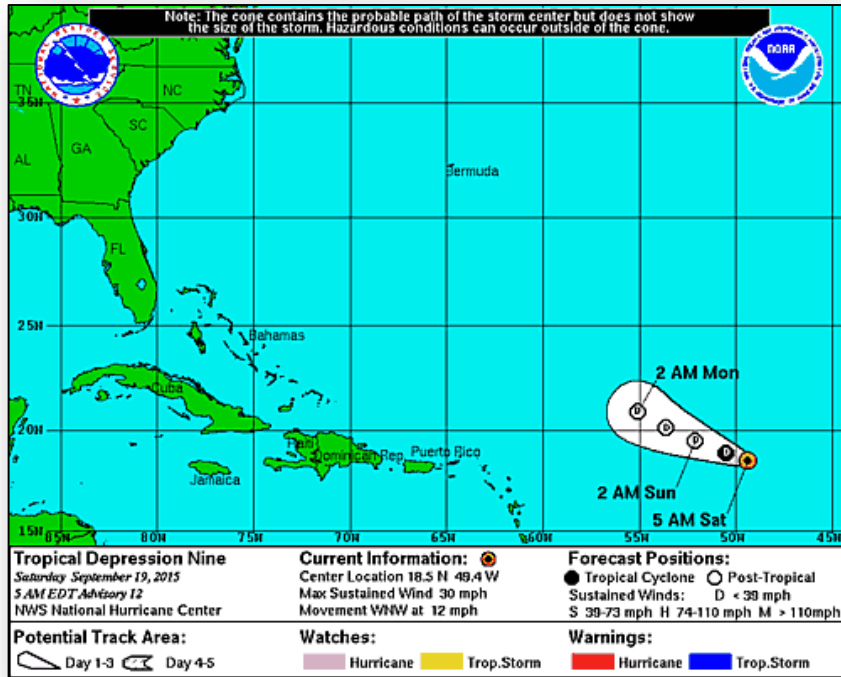
2-Day Tropical Outlook – Atlantic



Tropical Storm Ida (Advisory #4, as of 5:00 a.m. EDT)

- Located 970 miles W of Cape Verde Islands
- Moving NW at 10 mph
- NW to WNW track is forecast for next couple of days
- Maximum sustained winds 40 mph
- Some slow strengthening expected next 48 hours
- Tropical storm force winds extend 35 miles

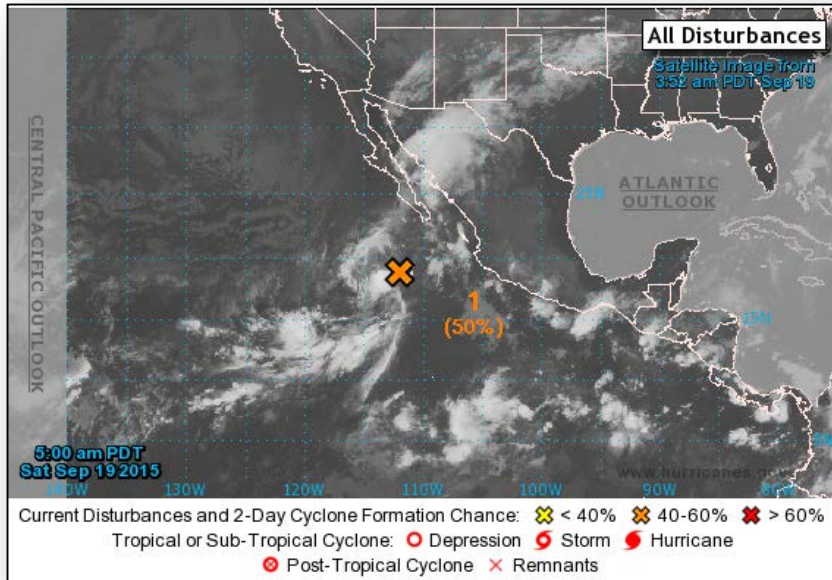
2-Day Tropical Outlook – Atlantic



Tropical Depression Nine (Advisory #12, as of 5:00 a.m. EDT)

- Located 815 miles ENE of Lesser Antilles
- Moving WNW at 12 mph
- This general motion expected to continue next couple of days
- Maximum sustained winds 30 mph
- Expected to degenerate to remnant low later today or tonight

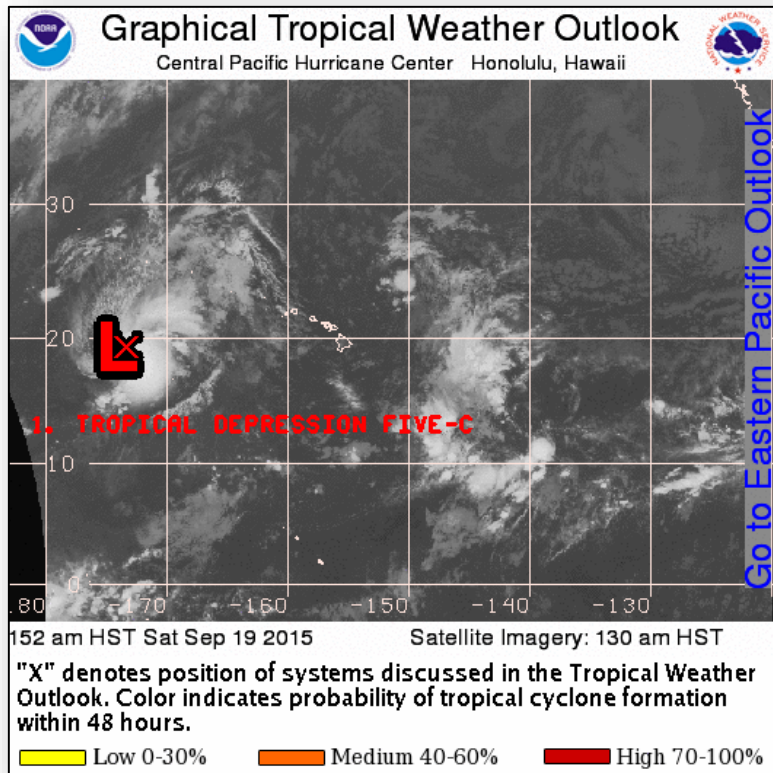
2 – Day Tropical Outlook – Eastern Pacific



Disturbance 1: (as of 5:00 a.m. EDT)

- Located 300 miles SSW of southern tip of Baja California peninsula, Mexico
- Moving NNW at 10 mph
- Conditions conducive for development next day or so
- Formation chance through 48 hours: Medium (50%)
- Formation chance through 5 days: Medium (50%)

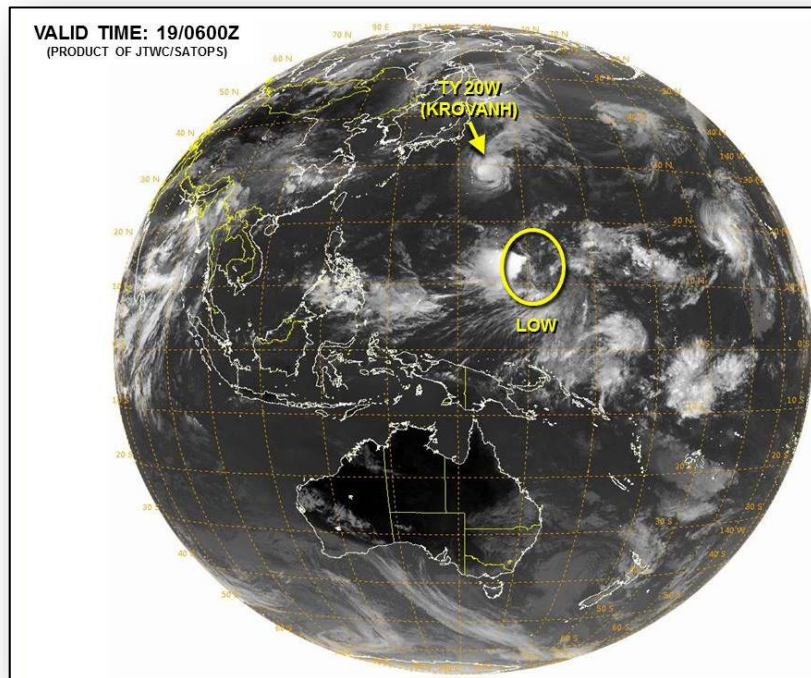
2 – Day Tropical Outlook – Central Pacific



Tropical Depression Five-C: (Advisory #2A as of 8:00 a.m. EDT)

- Located 485 miles S of Lisianski Island
- Moving NNE at 9 mph
- This general motion expected to continue today followed by turn N on Sunday
- Maximum sustained winds 35 mph
- Slow intensification expected next couple of days
- Expected to become tropical storm later today

Tropical Outlook – Western Pacific



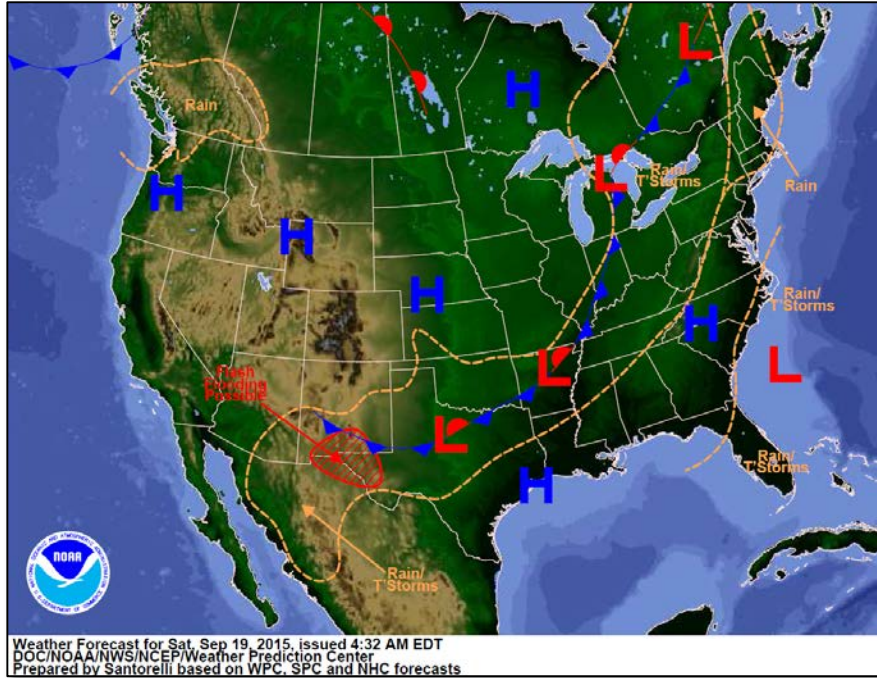
Typhoon 20W (Warning #19, as of 5:00 am EDT):

- Located 511 miles SSE of Yokosuka, Japan
- Moving away, no threat to US interests

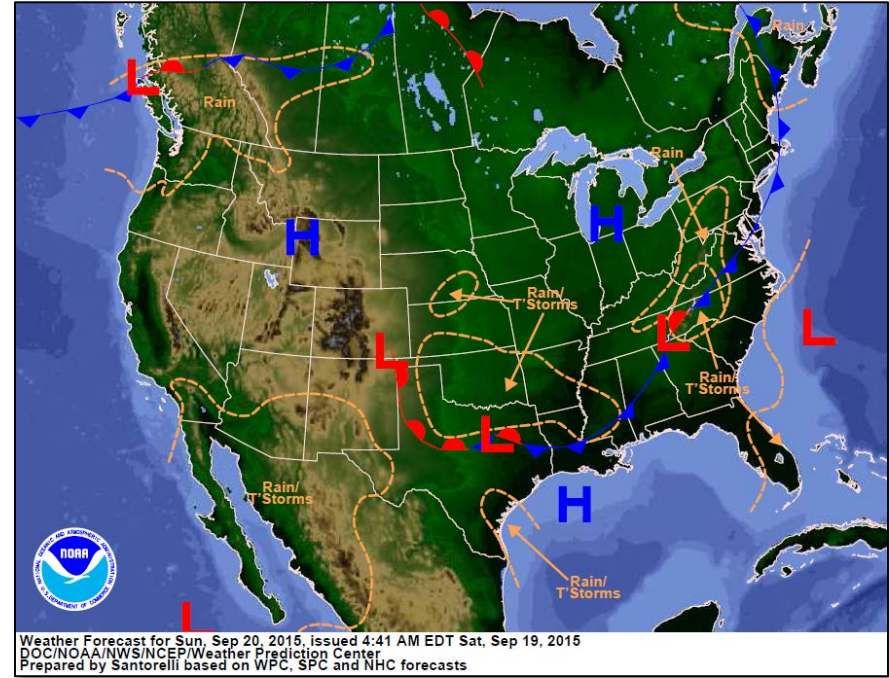
Area of convection (as of 5:00 am EDT):

- Located 354 miles N of Chuuk
- Maximum sustained winds 17-23 mph
- Probability of formation next 24 hours: Low

National Weather Forecast



Today

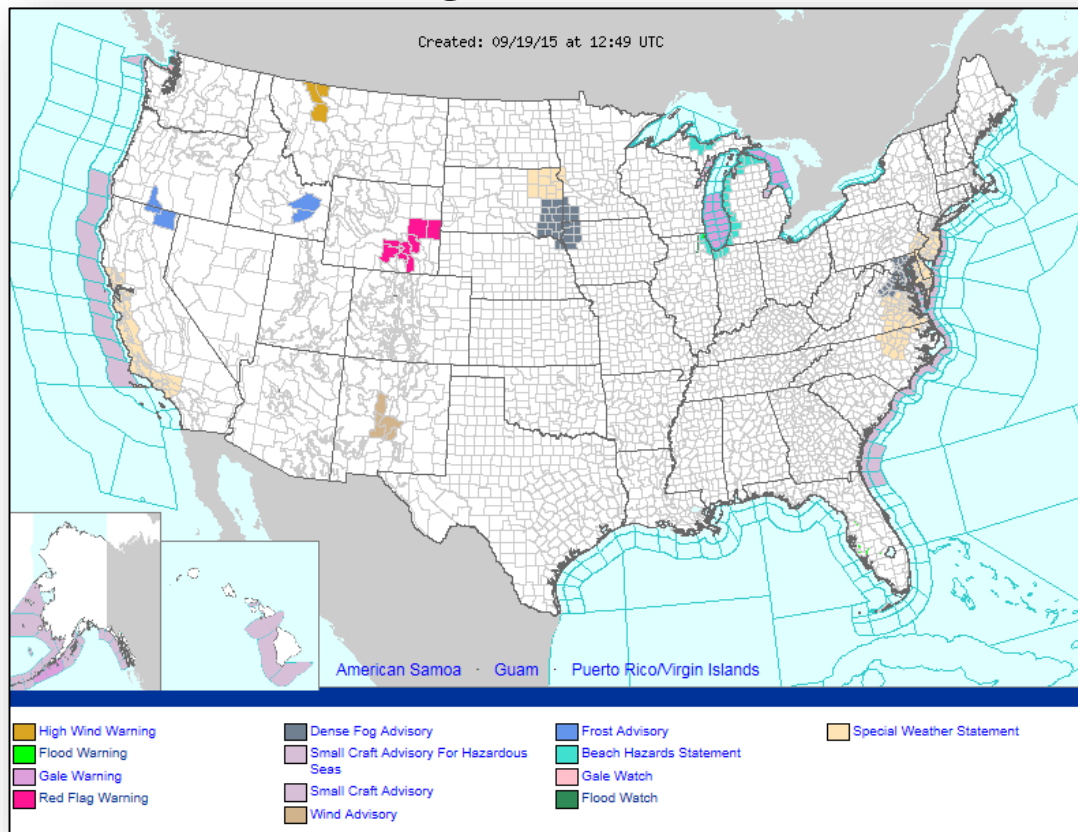


Tomorrow

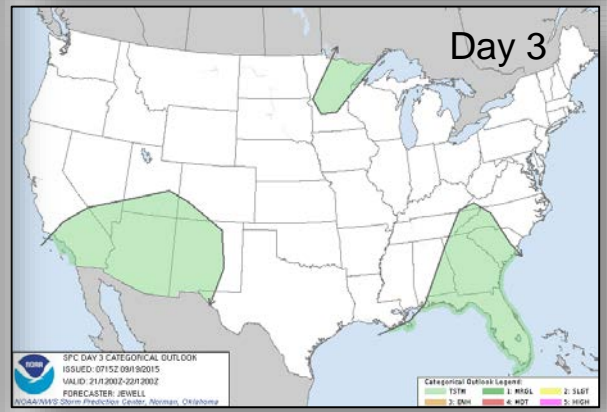
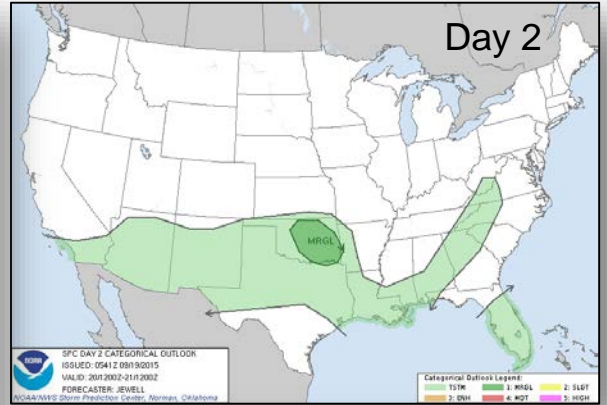
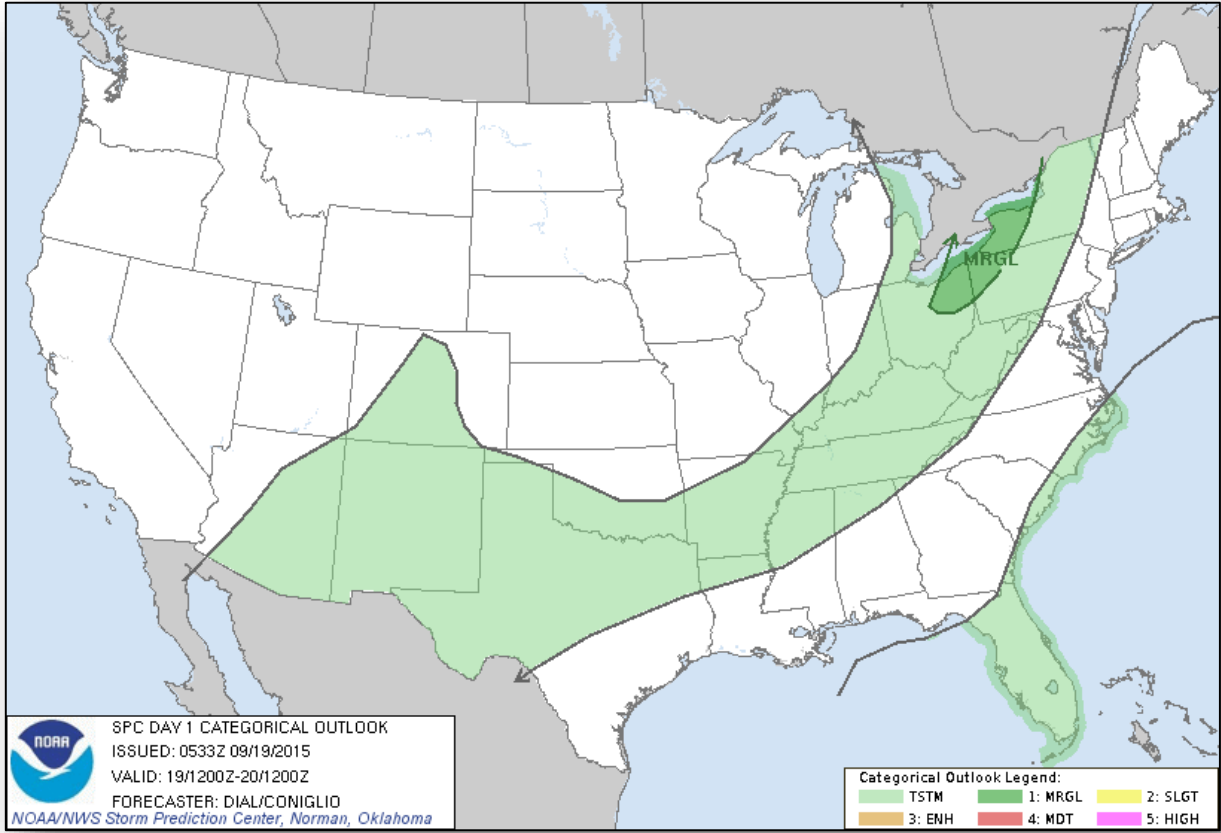
Active Watches/Warnings



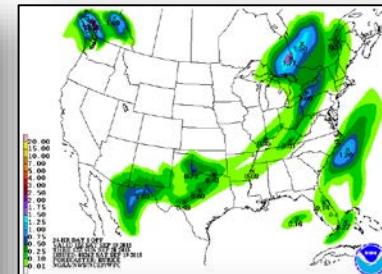
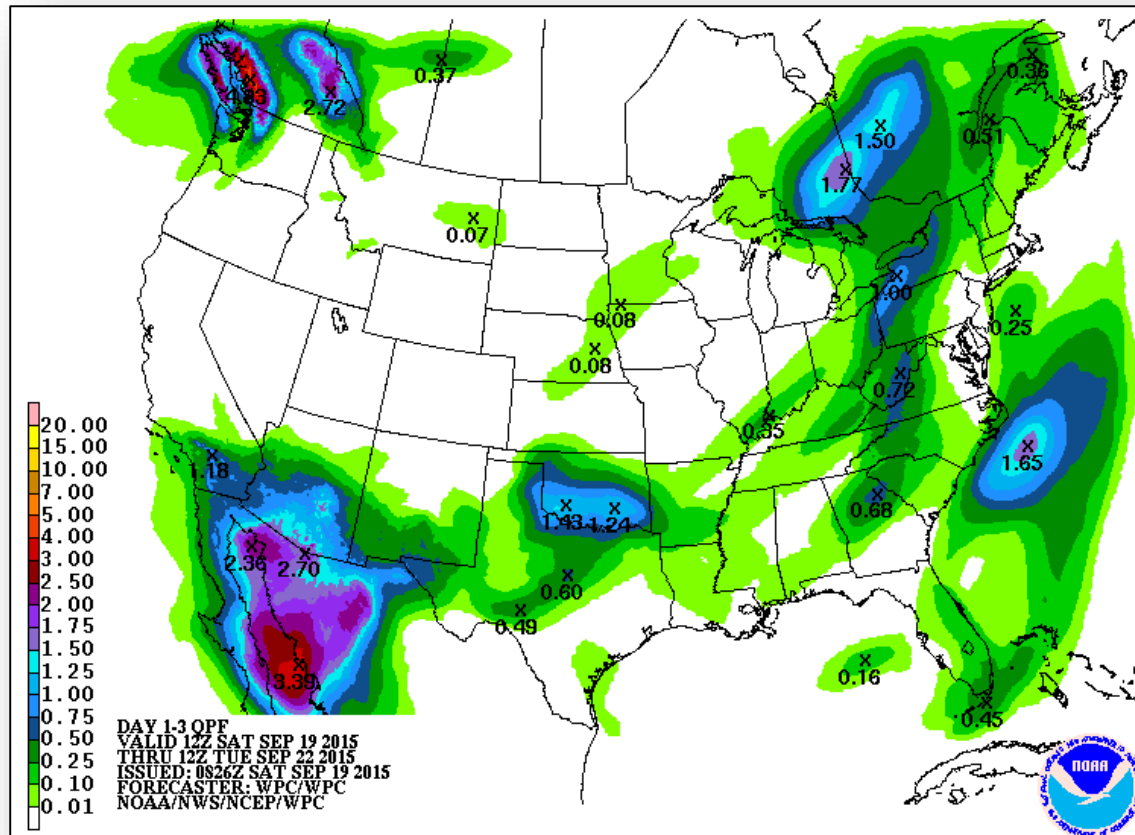
FEMA



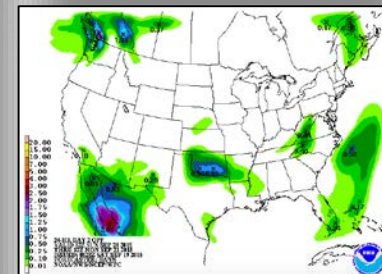
Severe Weather Outlook, Days 1–3



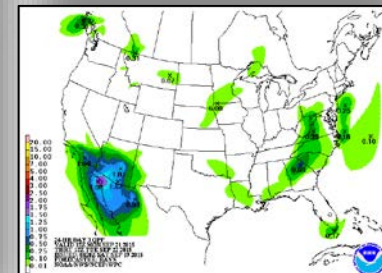
Precipitation Forecast, 1 – 3 Day



Day 1

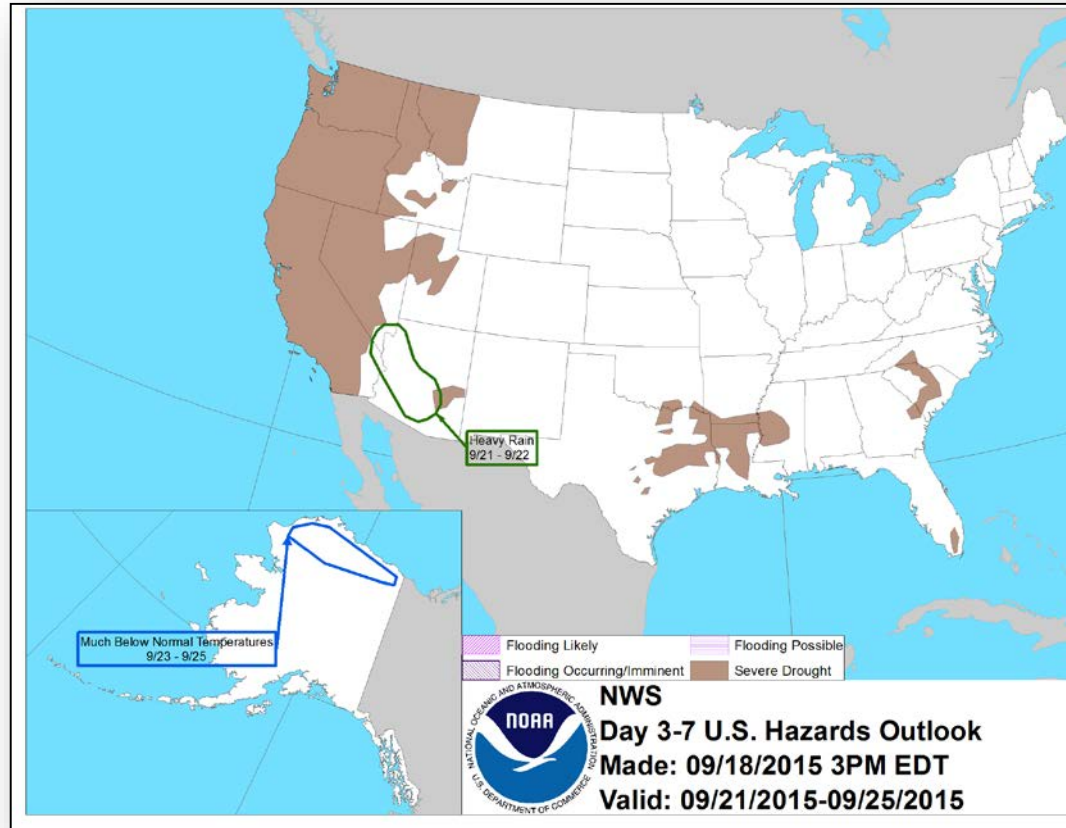


Day 2



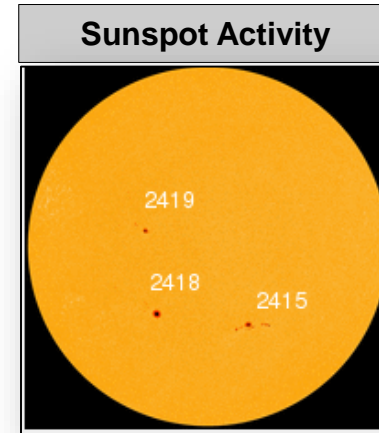
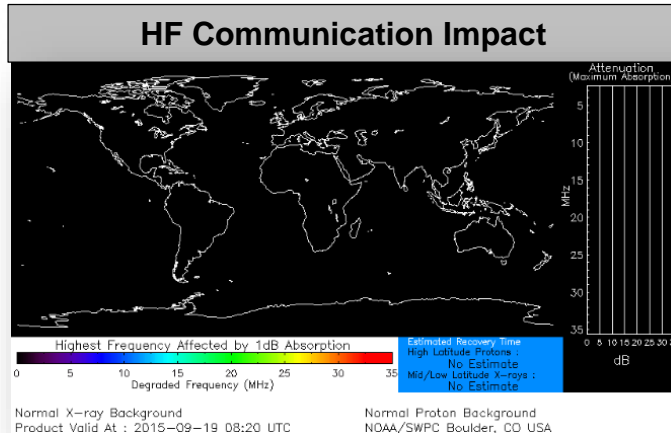
Day 3

Hazard Outlook, September 21 – 25



Space Weather

	Past 24 Hours	Current	Next 24 Hours
Space Weather Activity:	Minor	None	Minor
• Geomagnetic Storms	G1	None	G1
• Solar Radiation Storms	None	None	None
• Radio Blackouts	None	None	None



Wildfire Summary



Fire Name (County)	FMAG #	Acres burned	% Contained	Evacuations (Residents)	Structures Threatened	Structures Damaged/ Destroyed	Fatalities/ Injuries
California							
Butte Fire (Calaveras, Amador Counties)	FEMA-5111-FM-CA	70,760	63% (+8)	1,200 (-250)	6,400 (6,000 homes)	47 (+21)(18 homes)/ 833 (+207) (503 homes)	2/0
Valley Fire (Lake, Napa, Sonoma Counties)	FEMA-5112-FM-CA	73,700	45% (+10)	14,913 (-480)	7,378 (-240) (7,253 homes)	0/603 (585 homes)	3/4
Response: Region IX: Enhanced Watch Region IX: IMAT-3 & 2 LNOs deployed to CA CA EOC & Regional EOCs: Fully Activated				Shelters: ARC & Independent shelters: 9 (-1) open with 1,446 (-167) occupants (ARC Midnight Shelter Report 1/9 Sep)			

Disaster Requests & Declarations

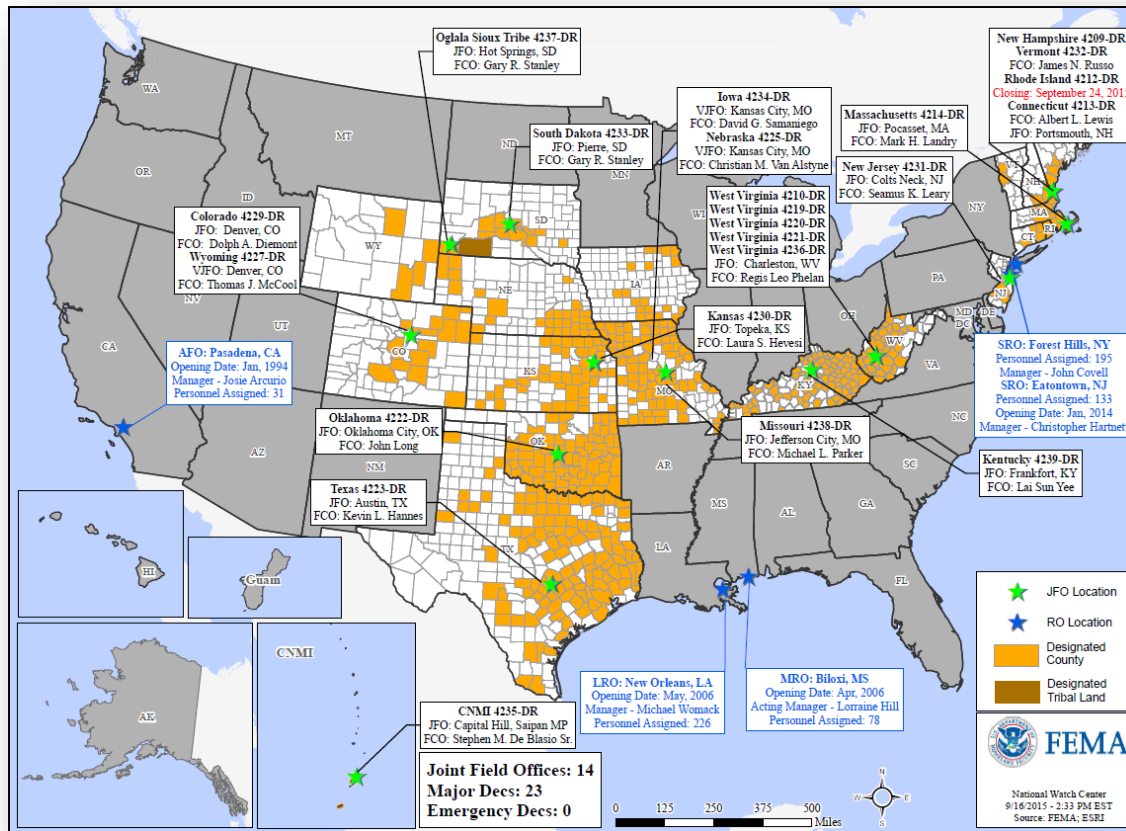


Declaration Requests in Process		Requests APPROVED (since last report)	Requests DENIED (since last report)
1	Date Requested	0	0
FL – DR (Appeal) Severe Storms and Flooding (IA)	September 11, 2015		

Open Field Offices as of September 19



FEMA



Joint Preliminary Damage Assessments



Region	State / Location	Event	IA/PA	Number of Counties		Start – End
				Requested	Complete	
IX	CA	Butte Fire September 9, 2015 & ongoing	IA	1	0	9/17 – TBD
IX	CA	Valley Fire September 12, 2015 - ongoing	IA	1	0	9/16 – TBD
X	WA	Wildfires June 29, 2015 & ongoing	IA	5	5 (+5)	9/14 – 9/18
			PA	5	0	9/14 – TBD
X	Colville Reservation (WA)	Wildfires June 29, 2015 & ongoing	IA	1	0	9/14 – TBD
			PA	1	0	9/14 – TBD
X	WA	Wind Storm August 29, 2015	PA	17 (+6 tribes)	0	9/16 – TBD
X	Warm Springs Reservation (OR)	County Line 2 Fire August 12, 2015 & ongoing	IA	TBD	0	9/21 - TBD
			PA	TBD	0	9/21 - TBD

FEMA Readiness – Deployable Teams /Assets



Deployable Teams/Assets									
Resource	Status	Total	FMC Available		Partially Available	Not Available	Detailed, Deployed, Activated	Comments	Rating Criterion
FCO		35	10	29%	0	1	24		OFDC Readiness: FCO Green Yellow Red Type 1 3+ 2 1 Type 2 4+ 3 2 Type 3 4 3 2 FDRC 3 2 1
FDRC		9	5	56%	0	0	4		
US&R		28	24	86%	2	2	0	UT-TF-1 (Red) – Flash Flood Support UT/AZ NY-TF1 (Yellow) – Sep 10-30 for Papal Visit Support PA-TF1 (Yellow) – Sep 17-21; (Red) Sep 21-24; (Yellow) Sep 29 – Oct 5 for In-State Exercise NM-TF1 (Red) – Personnel shortages	<ul style="list-style-type: none">• Green = Available/FMC• Yellow = Available/PMC• Red = Out-of-Service• Blue = Assigned/Deployed
National IMAT		3	3	100%	0	0	0		<ul style="list-style-type: none">• Green: 3 avail• Yellow: 1-2 avail• Red: 0 avail (<i>Individual N-IMAT red if 50% of Section Chiefs and/or Team Leader is unavailable for deployment.</i>)
Regional IMAT		13	5	38%	0	0	8	<u>Deployed:</u> RII returning from CAD Sept 18 RV Deployed to Region VI RVI (Team 2) Deployed to TX RVII Deployed to MO RVIII (Team 1) Deployed to SD & CO RIX (Team 1) Deployed to CNMI RIX (Team 2) Deployed to American Samoa (Training) RX deployed to WA	<ul style="list-style-type: none">• Green: 7 or more avail• Yellow: 4 - 6 teams available• Red: > 8 teams deployed/unavailable <i>R-IMAT also red if TL Ops/Log Chief is unavailable & has no qualified replacement</i>
MCOV		59	49	83%	0	10	0		<ul style="list-style-type: none">• Green = 80 – 100% avail• Yellow = 60 – 79% avail• Red = 59% or below avail• Readiness remains 95%

FEMA Readiness – National/Regional Teams



National/Regional Teams									
Resource	Status	Total	FMC Available		Partially Available	Not Available	Status	Comments	Rating Criterion
NWC		5	5	100%	0	0	Activated	Enhanced Watch (days only) supporting UNGA & Papal Visit (NSSE)	<ul style="list-style-type: none"> • Green = FMC • Yellow = PMC • Red = NMC
NRCC		2	344	89%	0	44	Not Activated		
HLT		1	N/A	N/A	0	0	Activated		
DEST							Not Activated		
RRCCs		10	10	100%	0	0	Not Activated		
RWCs/MOCs		10	10	100%	0	0	Not Activated	Region IX - Enhanced Watch (days only) supporting CA wildfires	



FEMA

FEMA's mission is to support our citizens and first responders to ensure that as a nation we work together to build, sustain, and improve our capability to prepare for, protect against, respond to, recover from, and mitigate all hazards.