

The Disaster Center is dedicated to the idea that disaster mitigation is cost effective and individuals pursuing their own interest are the greatest potential force for disaster reduction.

Please consider making a small donation to the Disaster Center



When disaster mitigation is cost effective, we are on the road to bringing disasters to an end.



FEMA

Daily Operations Briefing

Sunday, September 20, 2015

8:30 a.m. EDT

Significant Activity: Sep 19 – 20



Significant Events: None

Tropical Activity:

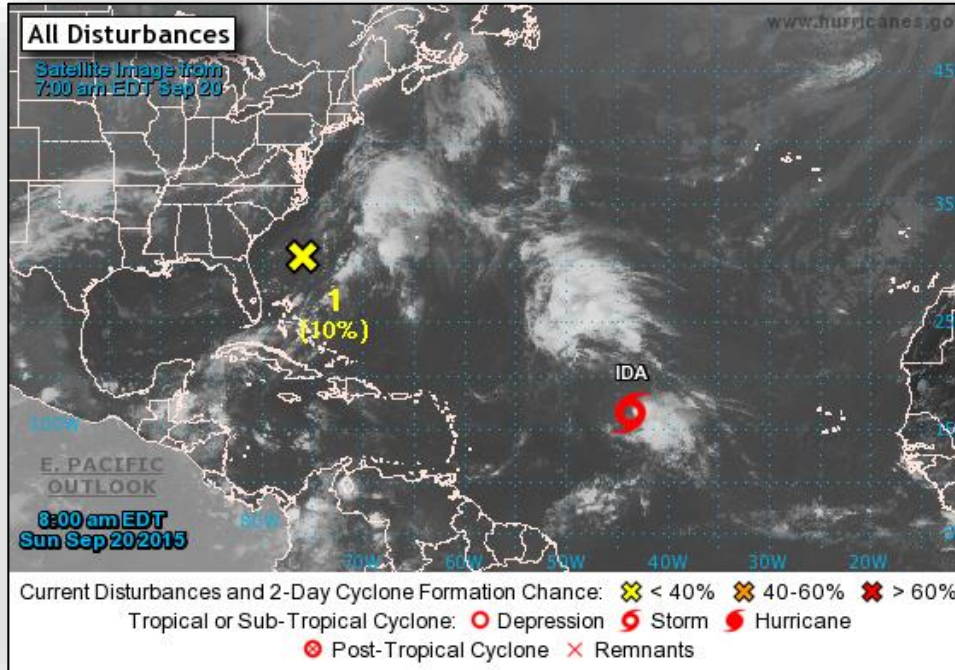
- Atlantic: Tropical: Tropical Storm Ida; Disturbance 1 – Low (10%)
- Eastern Pacific: Disturbance 1 – High (70%)
- Central Pacific: Tropical Depression Five-C; Disturbance 2 – Low (0%)
- Western Pacific: Invest 97W

Significant Weather:

- Rain and thunderstorms – Southwest; Florida to North Carolina
- Red Flag Warnings – WY
- Critical/Elevated Fire Weather areas – none
- Space weather:
 - Past 24 hours – Strong, G3 geomagnetic storms and R1 radio blackouts occurred
 - Next 24 hours – Strong, G3 geomagnetic storms expected

Declaration Activity: none

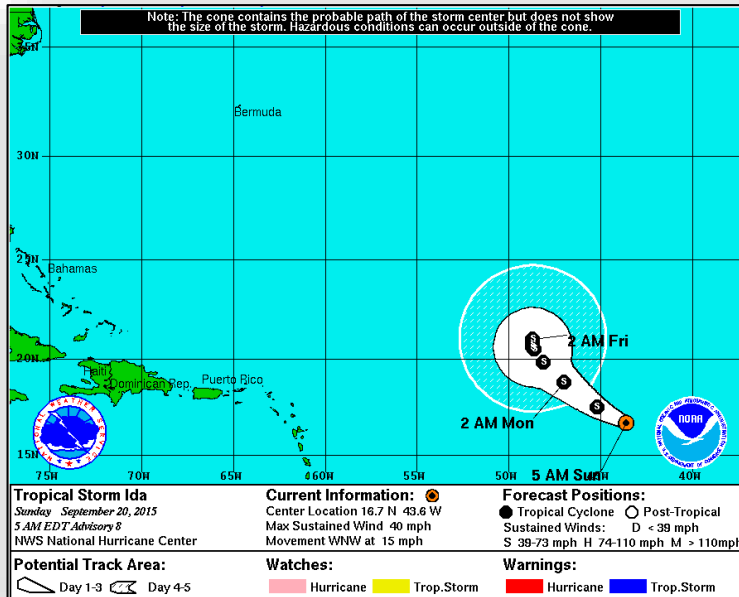
2-Day Tropical Outlook – Atlantic



Disturbance 1: (as of 8:00 a.m. EDT)

- Located 335 miles E of northeast FL coast
- Moving slowly NE away from southeast coast of U.S.
- Becoming less favorable for development
- Formation chance through 48 hours: Low (10%)
- Formation chance through 5 days: Low (10%)

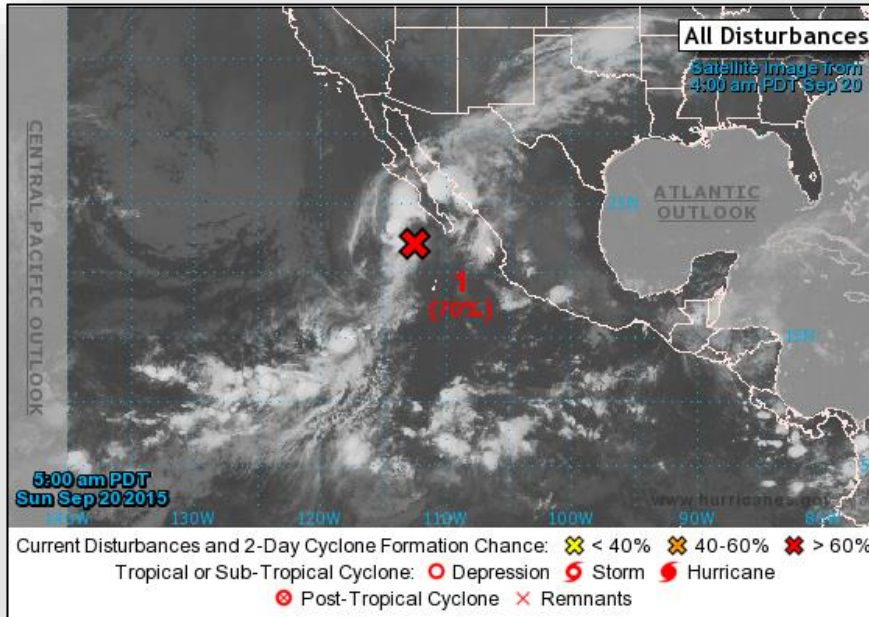
2-Day Tropical Outlook – Atlantic



Tropical Storm Ida (Advisory #8, as of 8:00 a.m. EDT)

- Located 1,300 miles W of Cape Verde Islands
- Moving WNW at 15 mph
- Turn W with decrease in forward speed Monday
- Maximum sustained winds 40 mph
- Turn toward NW and decrease in forward speed on Monday
- Tropical storm force winds extend 125 miles

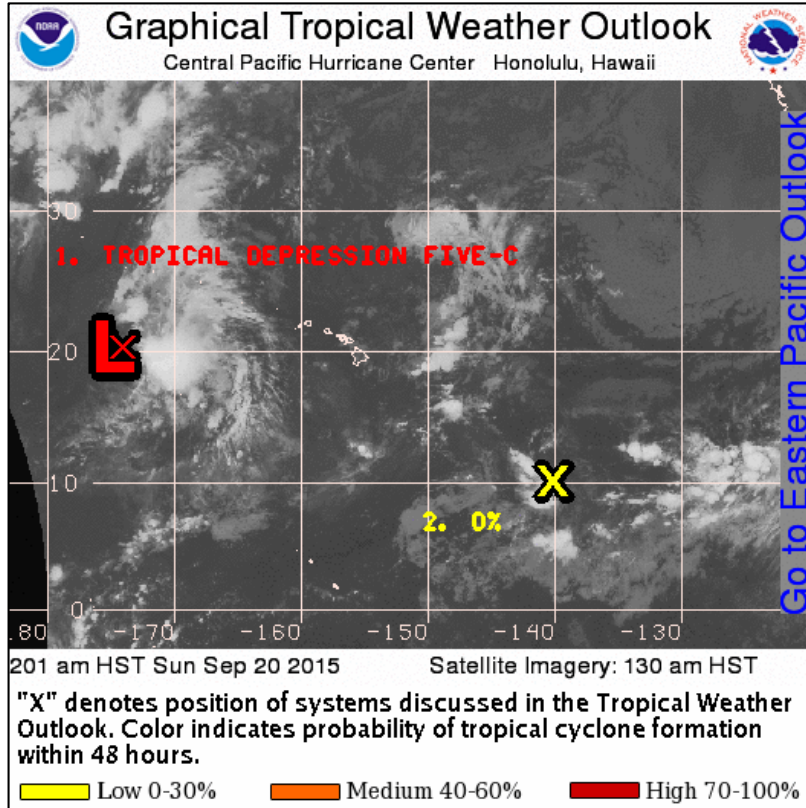
2 – Day Tropical Outlook – Eastern Pacific



Disturbance 1: (as of 8:00 a.m. EDT)

- Located 175 miles SW of southern tip of Baja California peninsula, Mexico
- Moving NNW or N at 10 - 15mph
- Potential to become a tropical depression today
- Regardless of development heavy rains possible in CA & AZ
- Formation chance through 48 hours: High (70%)
- Formation chance through 5 days: High (70%)

2 – Day Tropical Outlook – Central Pacific



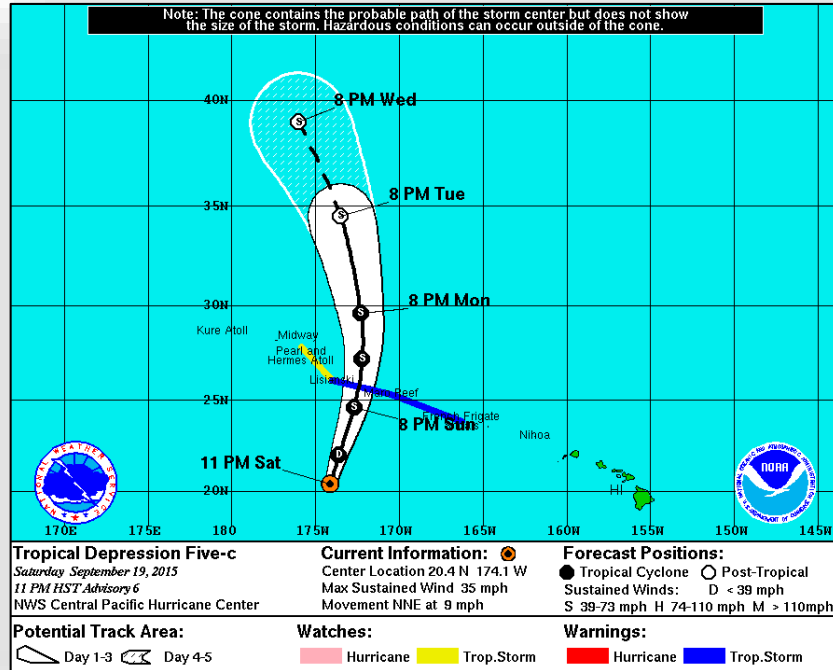
Tropical Depression Five-C: *(Advisory #6a as of 8:00 a.m. EDT)*

- Located 395 miles NW of Johnston Island
- Moving NNE at 9 mph
- Maximum sustained winds 35 mph
- Slow strengthening forecast over next 48 hours
- Tropical Storm Watches and Warning in effect for portions of the Papahānaumokuākea Marine National Monument

Disturbance 2: *(as of 8:00 a.m. EDT)*

- Located 1,200 miles SE of Hilo, HI
- Moving NNW or N at 10 - 15mph
- Although this system is not showing any signs of development at this time, some gradual organization will remain possible over the next couple of days as it slowly tracks westward
- Formation chance through 48 hours: High (0%)

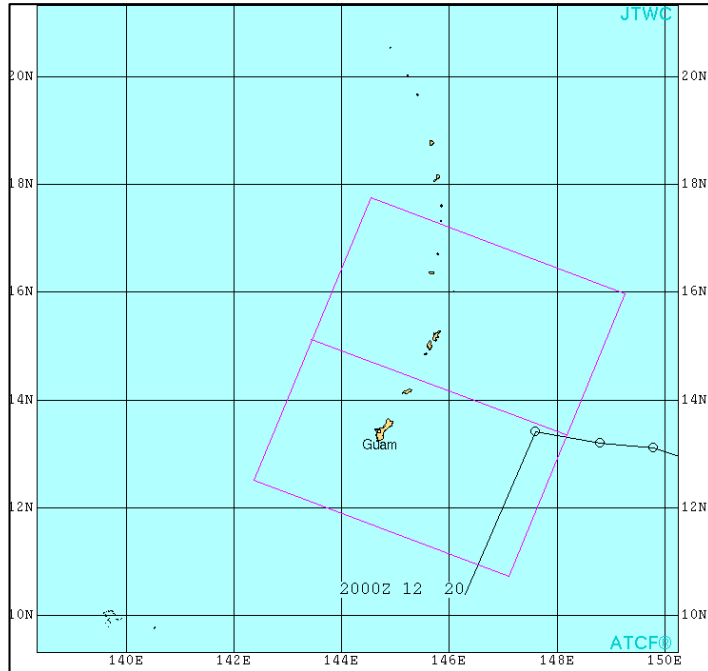
2 – Day Tropical Outlook – Central Pacific



Tropical Depression Five-C: (Advisory #6a as of 8:00 a.m. EDT)

- Located 395 miles NW of Johnston Island
- Moving NNE at 9 mph
- Maximum sustained winds 35 mph
- Slow strengthening forecast over next 48 hours
- Tropical Storm Watches and Warning in effect for portions of the Papahānaumokuākea Marine National Monument

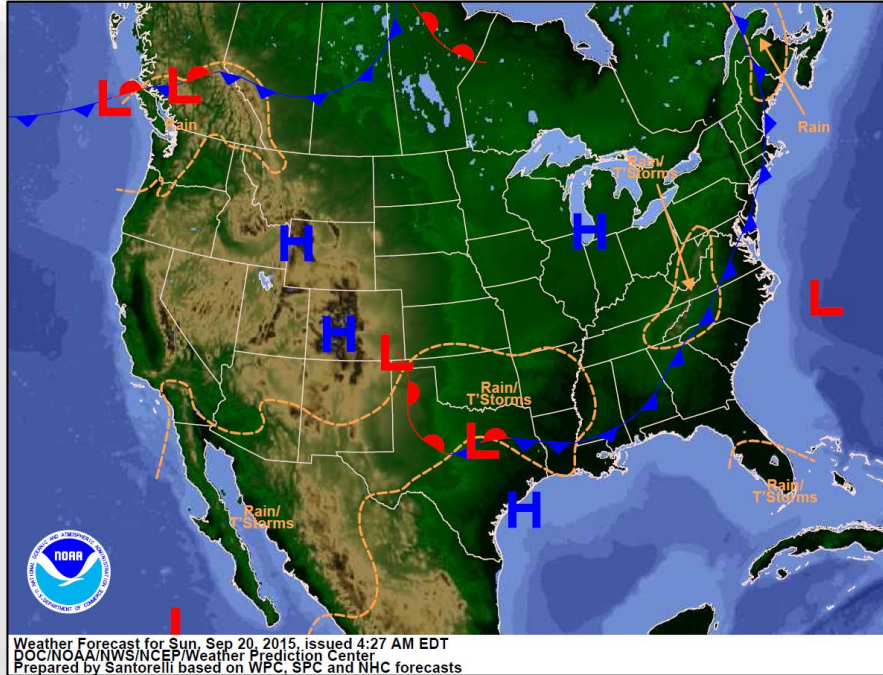
Tropical Outlook – Western Pacific



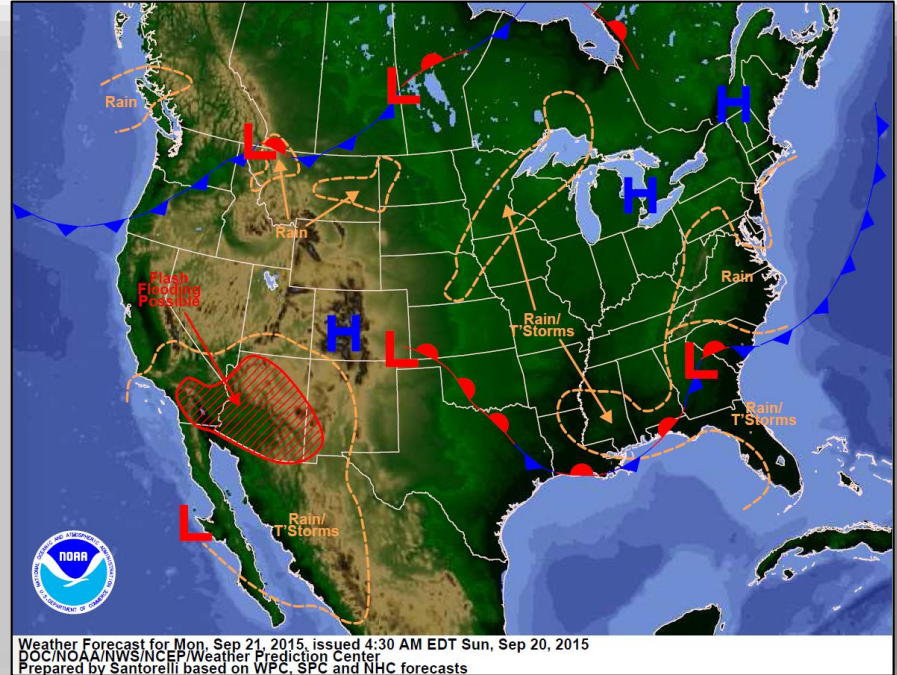
Invest 97W (as of 8:00 a.m. EDT):

- Located 195 miles E of Guam
- Maximum sustained winds 23 – 28 mph
- Moving west at 13 mph
- Environment is favorable for further development
- Probability of formation next 24 hours: High

National Weather Forecast



Today

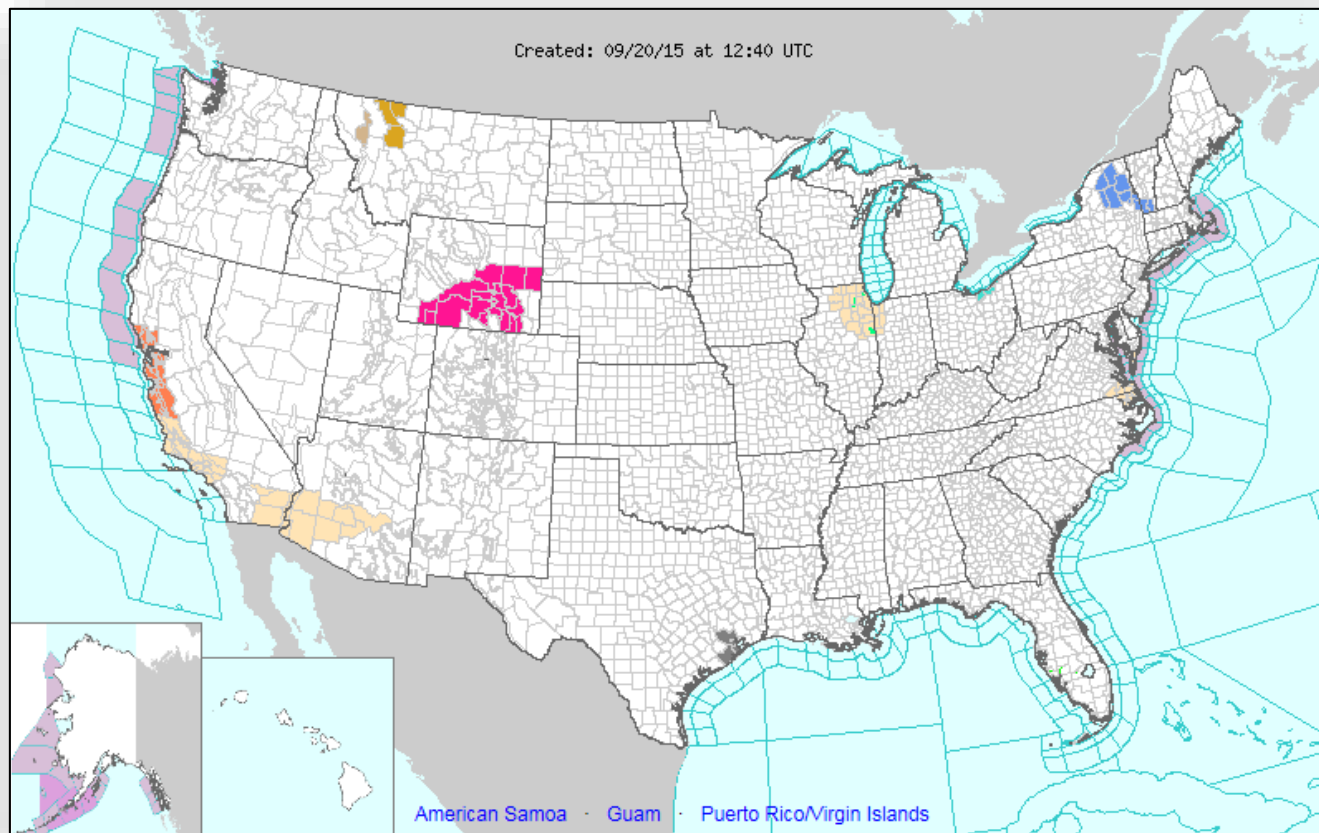


Tomorrow

Active Watches/Warnings



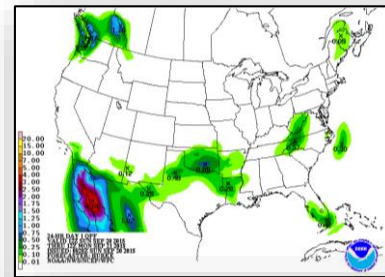
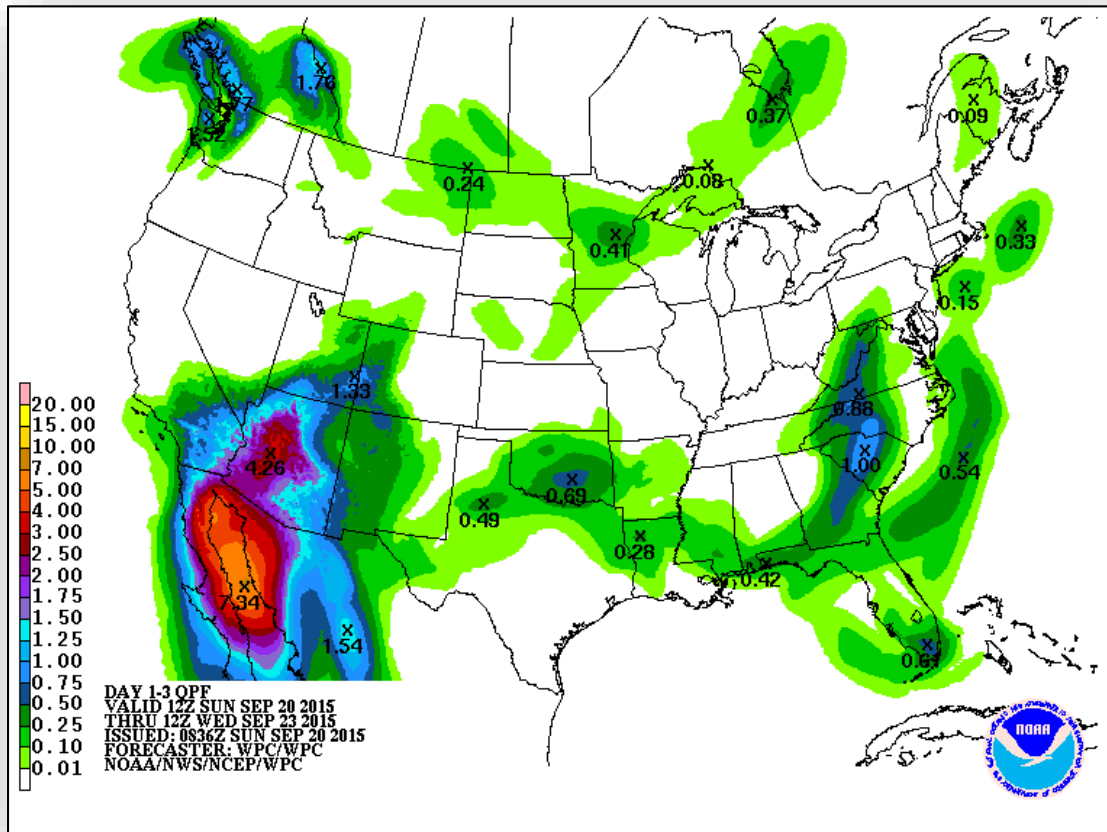
FEMA



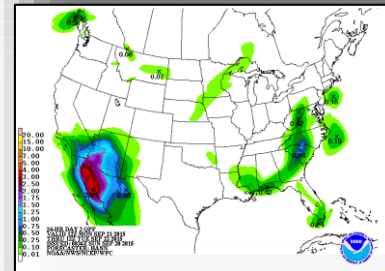
Precipitation Forecast, 1 – 3 Day



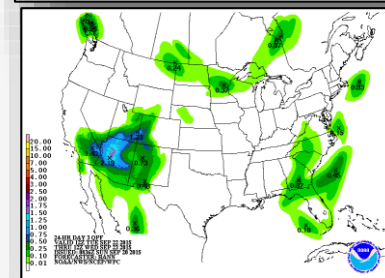
FEMA



Day 1

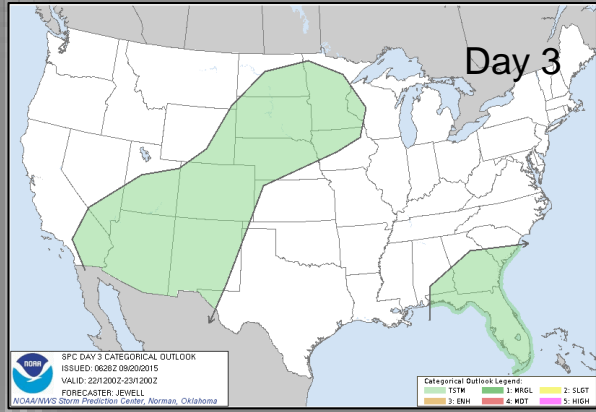
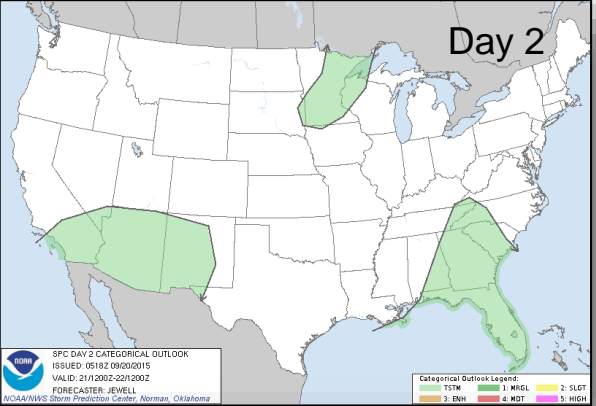
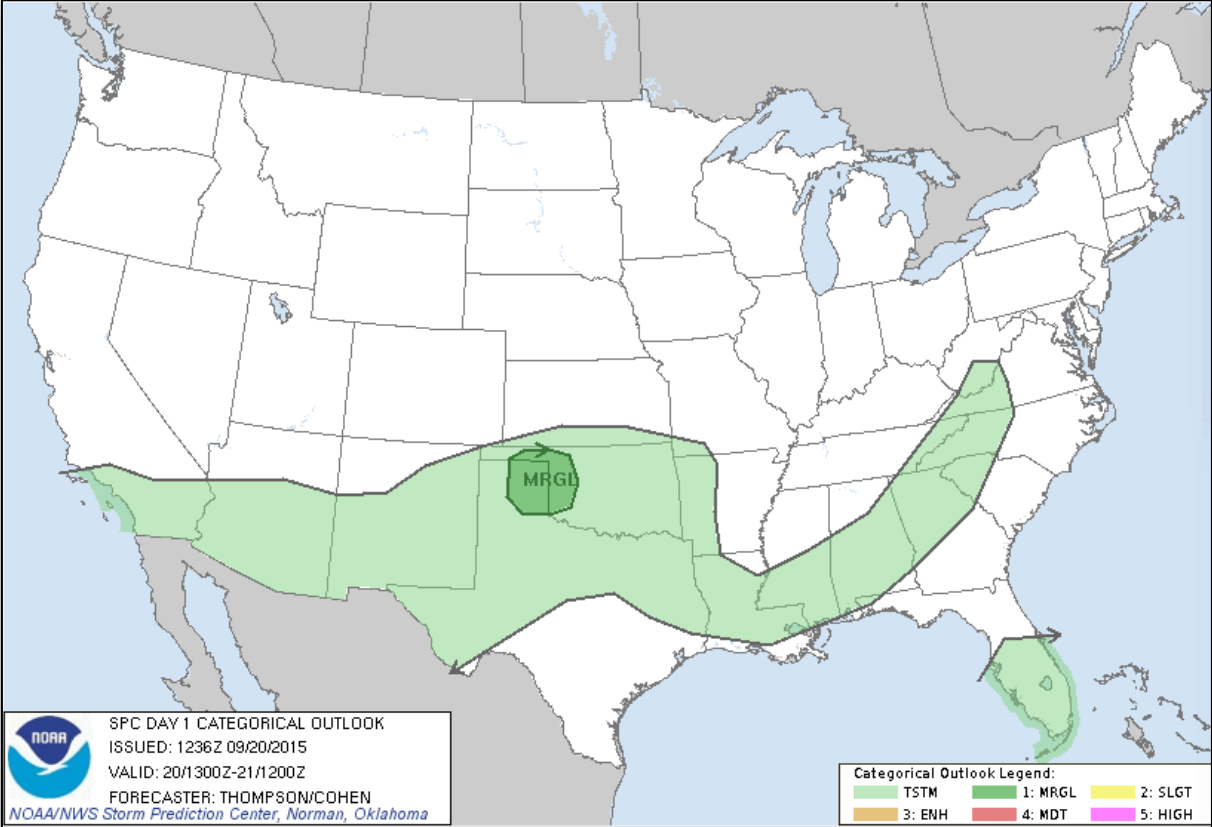


Day 2



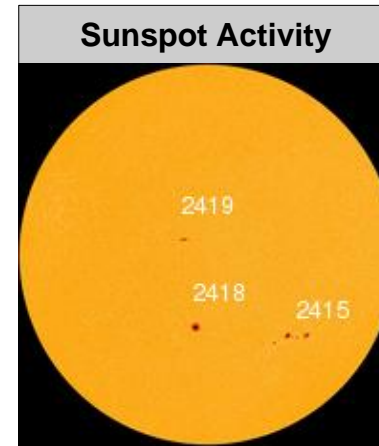
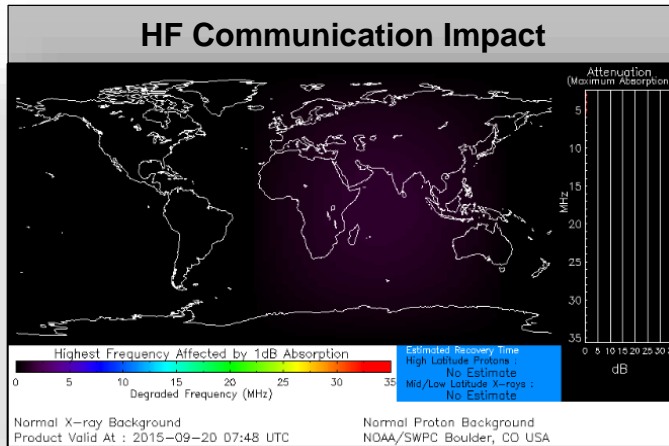
Day 3

Severe Weather Outlook, Days 1-3



Space Weather

	Past 24 Hours	Current	Next 24 Hours
Space Weather Activity:	Strong	None	Strong
• Geomagnetic Storms	G3	None	G3
• Solar Radiation Storms	None	None	None
• Radio Blackouts	R1	None	None



Wildfire Summary



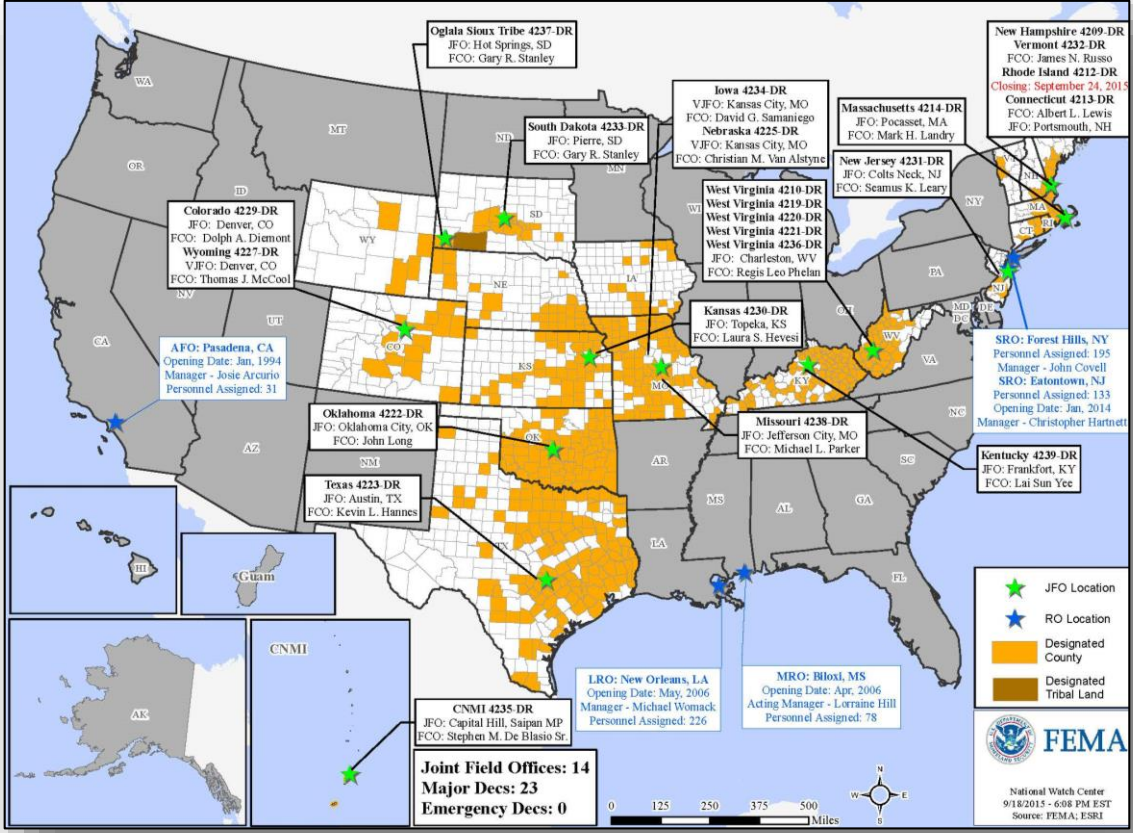
Fire Name (County)	FMAG #	Acres burned	% Contained	Evacuations (Residents)	Structures Threatened	Structures Damaged/ Destroyed	Fatalities/ Injuries
California							
Butte Fire (Calaveras, Amador Counties)	FEMA-5111-FM-CA	70,760	67% (+2)	800 (-400)	6,400 (6,000 homes)	18 (18 homes)/ 848 (511 homes)	2/0
Valley Fire (Lake, Napa, Sonoma Counties)	FEMA-5112-FM-CA	74,500 (+800)	50% (+5)	13,063 (-1,850)	7,378 (6,563 homes)	30/1,480 (888 homes)	3/4
Response: Region IX: Enhanced Watch Region IX: IMAT-3 & 2 LNOs deployed to CA CA EOC & Regional EOCs: Fully Activated				Shelters: ARC & Independent shelters: 10 (no change) open with 559 (-887) occupants (ARC Midnight Shelter Report 20 Sep)			

Disaster Requests & Declarations



Declaration Requests in Process		Requests APPROVED (since last report)	Requests DENIED (since last report)
1	Date Requested	0	0
FL – DR (Appeal) Severe Storms and Flooding (IA)	September 11, 2015		

Open Field Offices as of September 20



Joint Preliminary Damage Assessments



Region	State / Location	Event	IA/PA	Number of Counties		Start – End
				Requested	Complete	
IX	CA	Butte Fire September 9, 2015 & ongoing	IA	1	0	9/17 – TBD
IX	CA	Valley Fire September 12, 2015 - ongoing	IA	1	0	9/16 – TBD
X	WA	Wildfires June 29, 2015 & ongoing	IA	5	5 (+5)	9/14 – 9/18
			PA	5	0	9/14 – TBD
X	Colville Reservation (WA)	Wildfires June 29, 2015 & ongoing	IA	1	0	9/14 – TBD
			PA	1	0	9/14 – TBD
X	WA	Wind Storm August 29, 2015	PA	17 (+6 tribes)	0	9/16 – TBD
X	Warm Springs Reservation (OR)	County Line 2 Fire August 12, 2015 & ongoing	IA	TBD	0	9/21 - TBD
			PA	TBD	0	9/21 - TBD

FEMA Readiness – Deployable Teams /Assets



Deployable Teams/Assets									
Resource	Status	Total	FMC Available		Partially Available	Not Available	Detailed, Deployed, Activated	Comments	Rating Criterion
FCO		35	12	34%	0	1	22		OFDC Readiness: FCO Green Yellow Red Type 1 3+ 2 1 Type 2 4+ 3 2 Type 3 4 3 2 FDRC 3 2 1
FDRC		9	5	56%	0	0	4		
US&R		28	24	86%	2	2	0	UT-TF-1 (Red) – Flash Flood Support UT/AZ NY-TF1 (Yellow) – Sep 10-30 for Papal Visit Support PA-TF1 (Yellow) – Sep 17-21; (Red) Sep 21-24; (Yellow) Sep 29 – Oct 5 for In-State Exercise NM-TF1 (Red) – Personnel shortages	<ul style="list-style-type: none"> • Green = Available/FMC • Yellow = Available/PMC • Red = Out-of-Service • Blue = Assigned/Deployed
National IMAT		3	3	100%	0	0	0		<ul style="list-style-type: none"> • Green: 3 avail • Yellow: 1-2 avail • Red: 0 avail (<i>Individual N-IMAT red if 50% of Section Chiefs and/or Team Leader is unavailable for deployment.</i>)
Regional IMAT		13	6	46%	0	0	7	<u>Deployed:</u> RV Deployed to Region VI R2 returned to Region from CAD RVI (Team 2) Deployed to LA RVII Deployed to MO RVIII (Team 1) Deployed to SD & CO RIX (Team 1) Deployed to CNMI RIX (Team 2) Deployed to American Samoa (Training) RX deployed to WA	<ul style="list-style-type: none"> • Green: 7 or more avail • Yellow: 4 - 6 teams available • Red: > 8 teams deployed/unavailable R-IMAT also red if TL Ops/Log Chief is unavailable & has no qualified replacement
MCOV		59	49	83%	0	10	0		<ul style="list-style-type: none"> • Green = 80 – 100% avail • Yellow = 60 – 79% avail • Red = 59% or below avail • Readiness remains 95%

FEMA Readiness – National/Regional Teams



National/Regional Teams									
Resource	Status	Total	FMC Available		Partially Available	Not Available	Status	Comments	Rating Criterion
NWC		5	5	100%	0	0	Activated	Enhanced Watch (days only) supporting UNGA & Papal Visit (NSSE)	<ul style="list-style-type: none"> • Green = FMC • Yellow = PMC • Red = NMC
NRCC		2	344	89%	0	44	Not Activated		
HLT		1	N/A	N/A	0	0	Activated		
DEST							Not Activated		
RRCCs		10	10	100%	0	0	Not Activated		
RWCs/MOCs		10	10	100%	0	0	Not Activated	Region IX - Enhanced Watch (days only) supporting CA wildfires	

2015 National Preparedness Month (NPM)



Don't Wait – Communicate – Make Your Emergency Plan Today

Awareness

- September is National Preparedness Month.
- This year we are asking you to take action now – make a plan with your community, your family, and for your pets.
- Plan how to stay safe and communicate during the disasters that can affect your community.
- We ask everyone to participate in America's PrepareAthon! and the national day of action, National PrepareAthon! Day, which culminates National Preparedness Month on **September 30**.



For additional information:

- Ready.gov
- [Hurricane Basics](#)
- [How to Prepare](#)



FEMA

FEMA's mission is to support our citizens and first responders to ensure that as a nation we work together to build, sustain, and improve our capability to prepare for, protect against, respond to, recover from, and mitigate all hazards.