

The Disaster Center is dedicated to the idea that disaster mitigation is cost effective and individuals pursuing their own interest are the greatest potential force for disaster reduction.

Please consider making a small donation to the Disaster Center



When disaster mitigation is cost effective, we are on the road to bringing disasters to an end.



FEMA

Daily Operations Briefing

Sunday, September 21, 2014

8:30 a.m. EDT

Significant Activity: Sep 20 – 21



Significant Events:

- CA & OR Wildfires

Tropical Activity:

- Atlantic – Disturbance 1 – (Low, 0%)
- Eastern Pacific – Tropical Storm Polo, Disturbance 1 – (Low, 0%)
- Central Pacific – No tropical cyclones expected early Tuesday morning

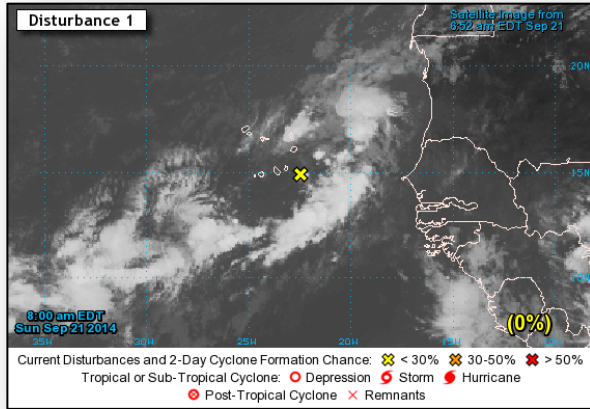
Significant Weather:

- Scattered areas of showers & thunderstorms expected across Southwestern States
- Elevated Fire Weather Areas: None
- Space Weather: Past 24-hours: None occurred; Next 24 hours: None predicted

FEMA Readiness: No significant activity

Declaration Activity: No activity

2 – Day Tropical Outlook - Atlantic



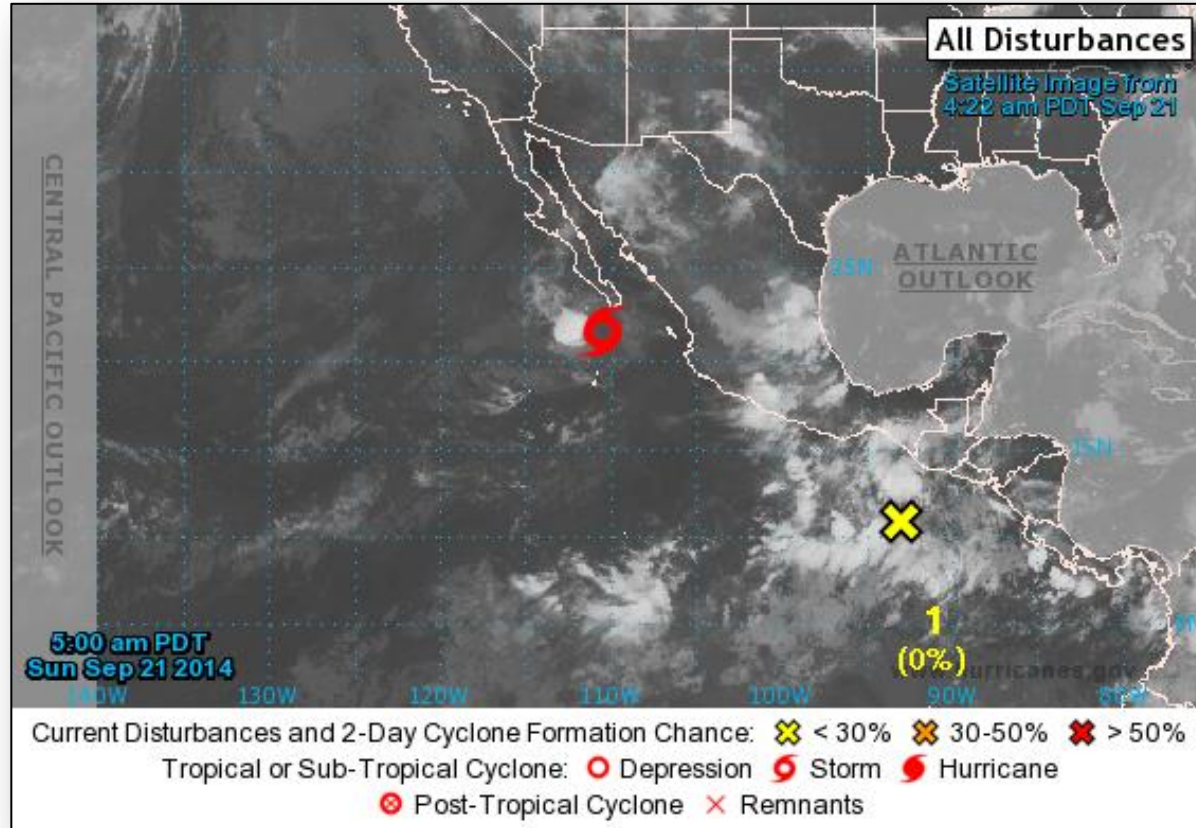
Disturbance 1 (as of 8:00 a.m. EDT)

- Disorganized cloudiness and showers
- Located SE of the Cape Verde Islands
- Moving slowly NW
- Conditions not conducive for development
- Formation chance:
 - Next 48-hours: Low (0%)
 - Next 5 days: Low (0%)

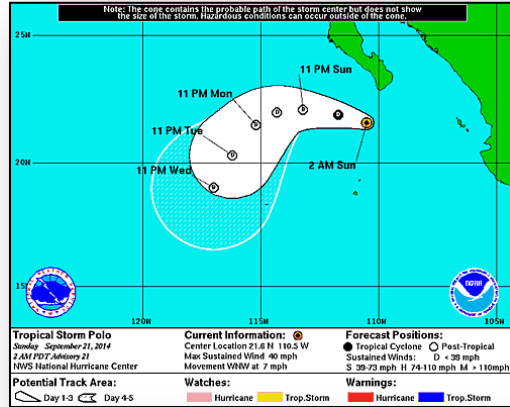
2-Day Tropical Outlook – Eastern Pacific



FEMA

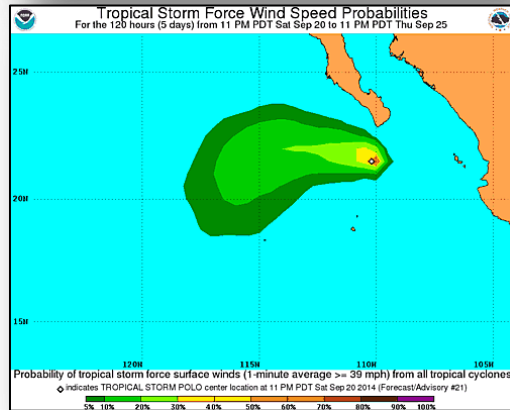


Eastern Pacific – Tropical Storm Polo

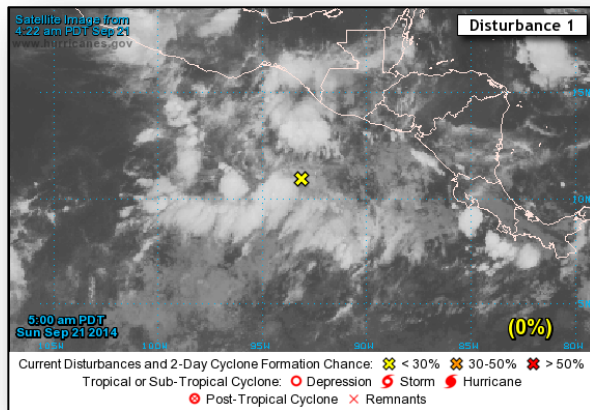


Tropical Storm Polo (as of 5:00 a.m. EDT)

- Located 100 miles SSW of the southern tip of Baja California, MX
- Moving WNW at 7 mph
- Maximum sustained winds 40 mph
- Additional weakening forecast next couple days
- Forecast to weaken to a Tropical Depression later today
- Tropical storm-force winds extend 45 miles
- Become a remnant low tonight or early Monday



Eastern Pacific – Disturbance 1



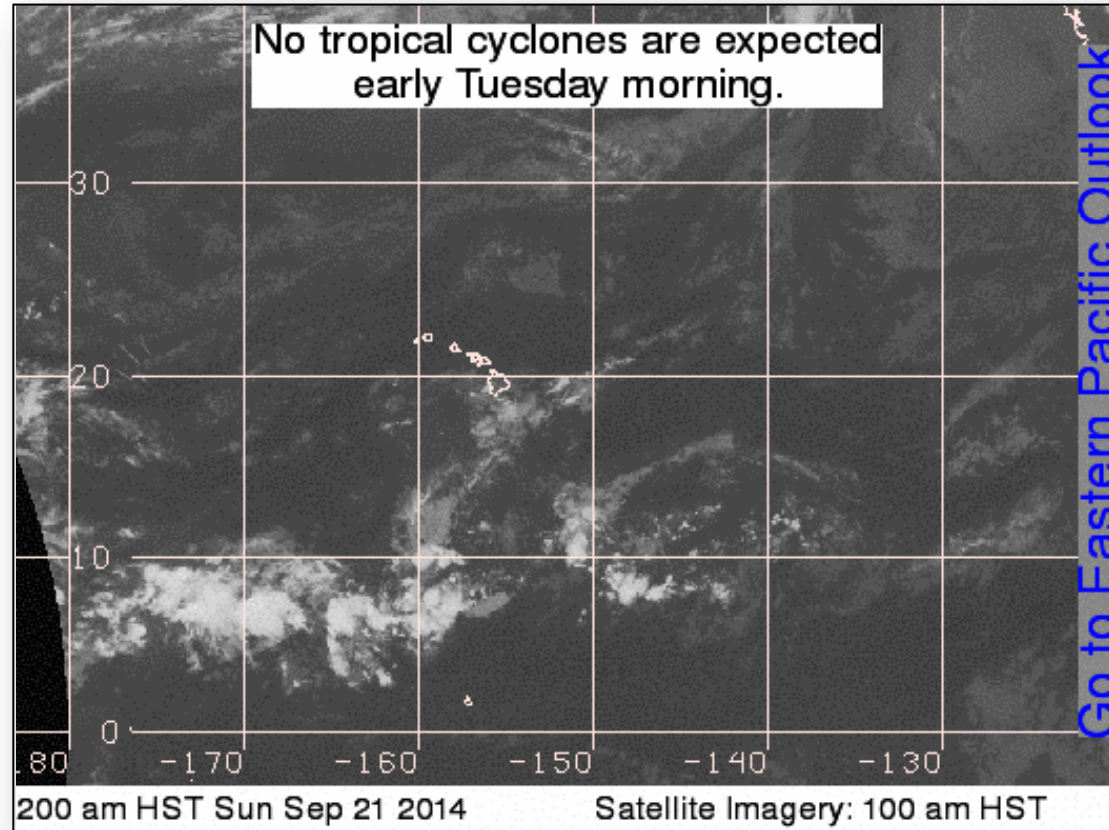
Disturbance 1 (as of 8:00 a.m. EDT)

- Located a couple hundred miles south of the coast of Guatemala
- Environmental conditions expected to become conducive for gradual development during the next several days
- Moving slowly W or WNW
- Probability of tropical cyclone:
 - Next 48 hours: Low (0%)
 - Next 5 days: Medium (30%)

2-Day Tropical Outlook – Central Pacific



FEMA



Wildfire Summary



Fire Name (County)	FMAG #	Acres Burned	% Contained Est. Containment date	Evacuations (Residents)	Structures Threatened	Structures Destroyed	Fatalities / Injuries
California (1)							
King Fire (El Dorado County)	FEMA-5081-FM-CA	81,944 (+950)	10%	Mandatory	21,000 (12,000 homes)	TBD	0/4
Oregon (1)							
36 Pit Fire (Clackamas County)	FEMA-5080-FM-OR	4,320 (+126)	45% (+5%)	Voluntary	192 (+24) (mixed homes / businesses)	0	0/1

Disaster Requests & Declarations

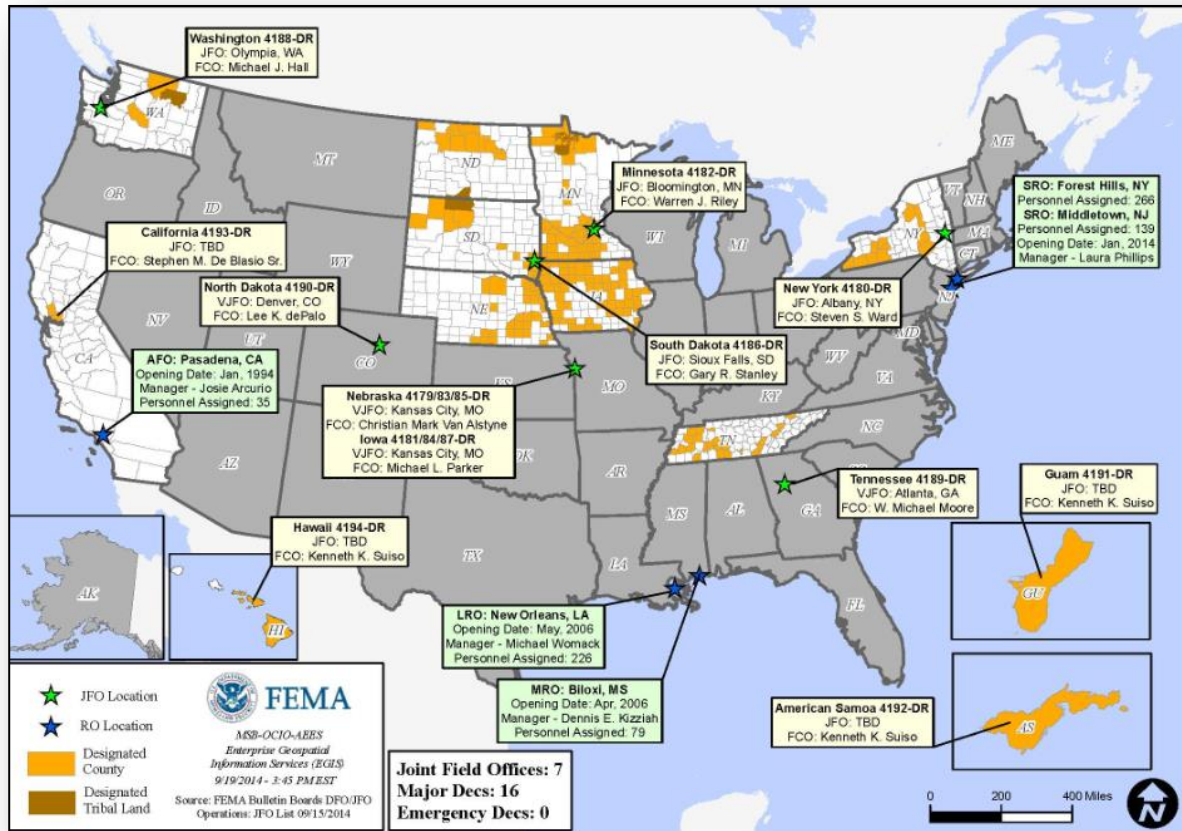


Declaration Requests in Process		Requests APPROVED (since last report)	Requests DENIED (since last report)
2	Date Requested	0	0
VT – DR Severe Storms and Flooding	September 5, 2014		
MI – DR Severe Storms and Flooding	September 17, 2014		

Open Field Offices as of September 21



FEMA



Joint Preliminary Damage Assessments

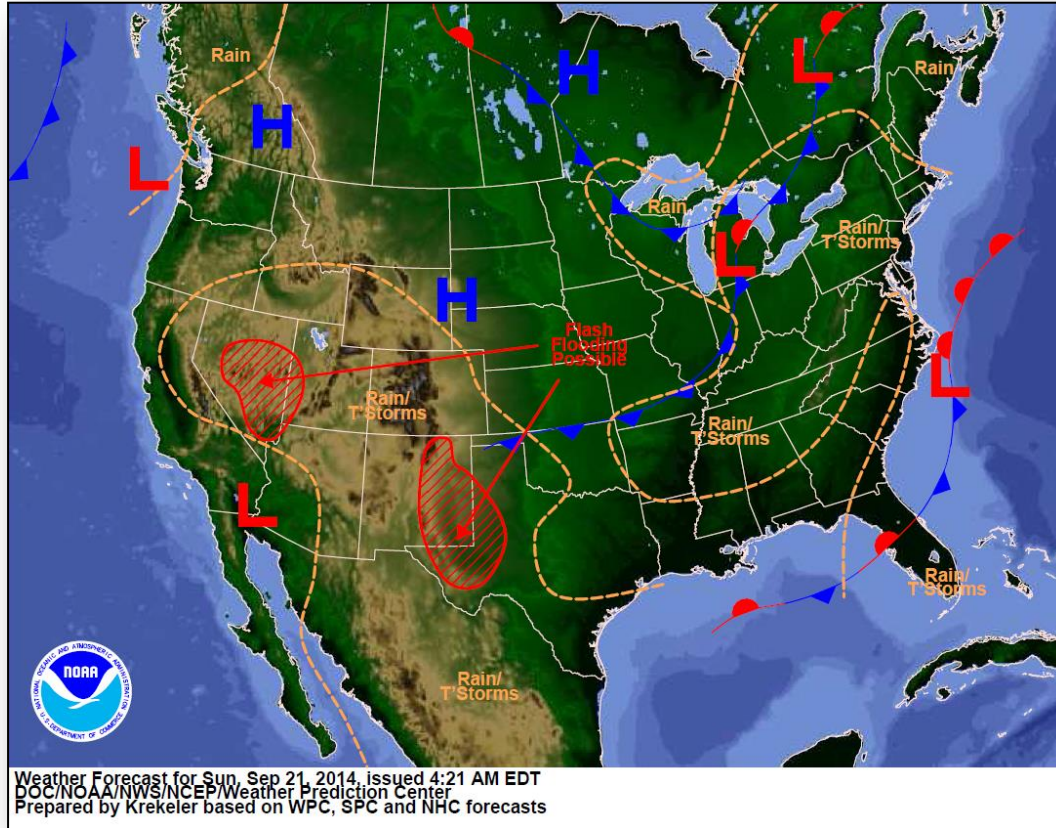


Region	State / Location	Event	IA/PA	Number of Counties		Start – End
				Requested	Complete	
II	NY	Heavy Rainfall & Flooding August 12-13, 2014	PA	1	0	9/18 – TBD
III	MD	Severe Storms August 12, 2014	PA	2	0	9/9 – TBD
VII	MO	Severe Storms September 9 -10, 2014	PA	16	0	TBD - TBD
VIII	MT	Severe Storms & Flooding August 21 – 28, 2014	PA	6	0	9/22 – 9/26
IX	NV	Severe Storms and Flooding September 8, 2014	IA	2	2	9/15 – 9/18
			PA	2	2	9/15 – 9/18

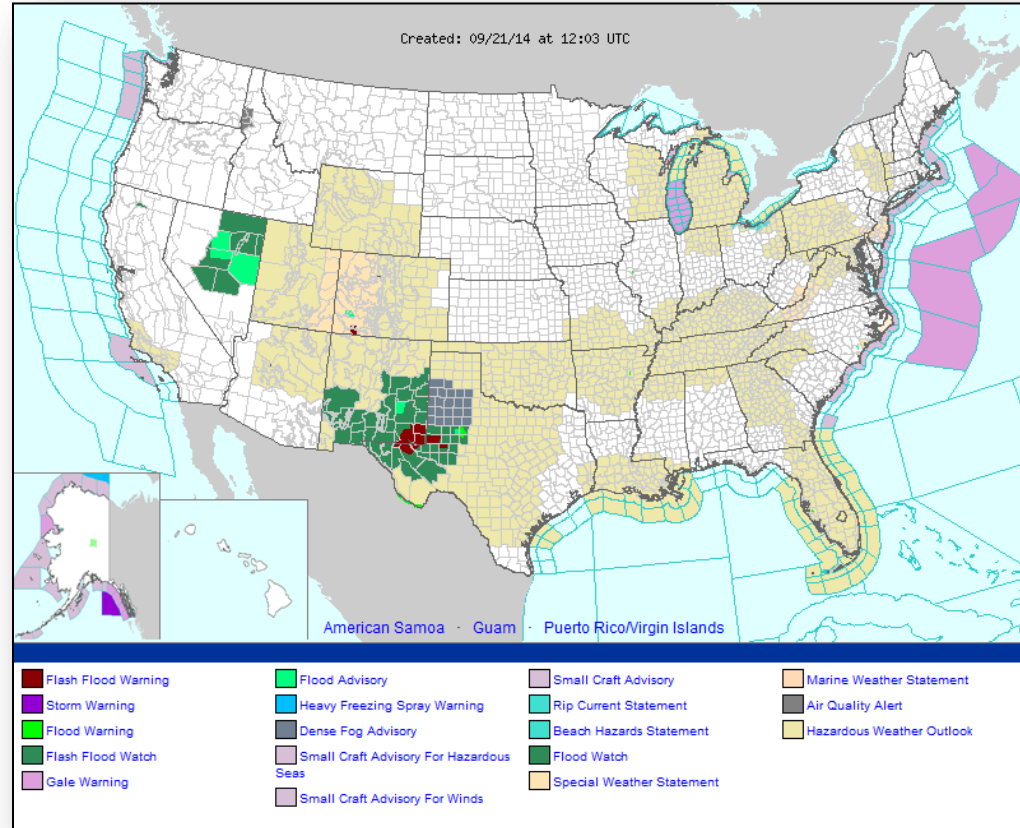
National Weather Forecast



FEMA



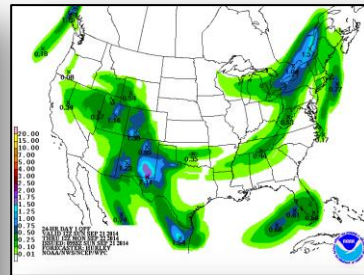
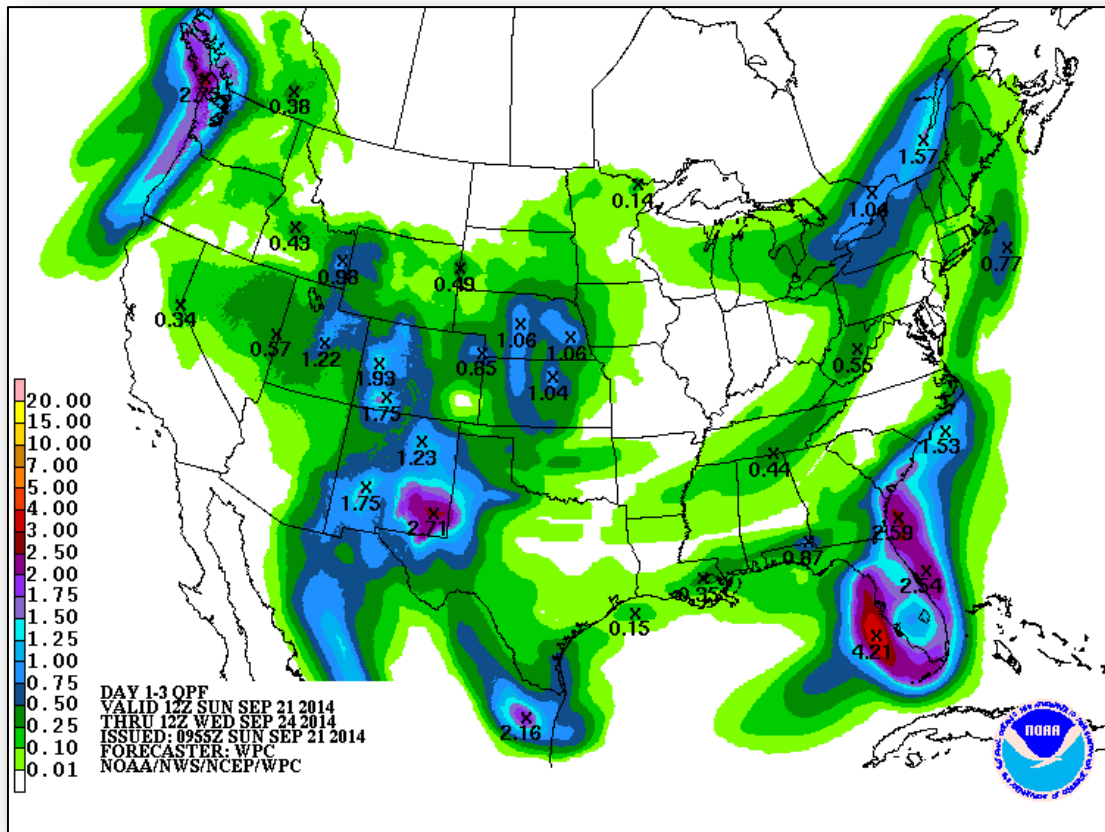
Active Watches/Warnings



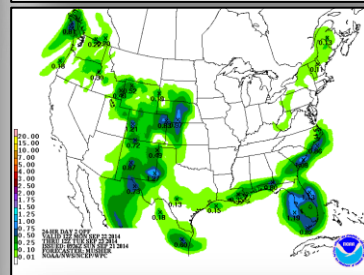
Precipitation Forecast – 3 Day



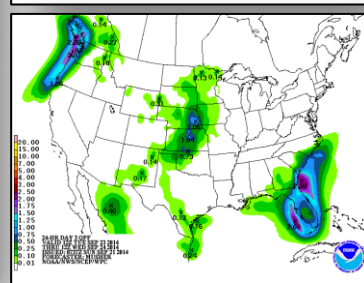
FEMA



Day 1



Day 2



Day 3

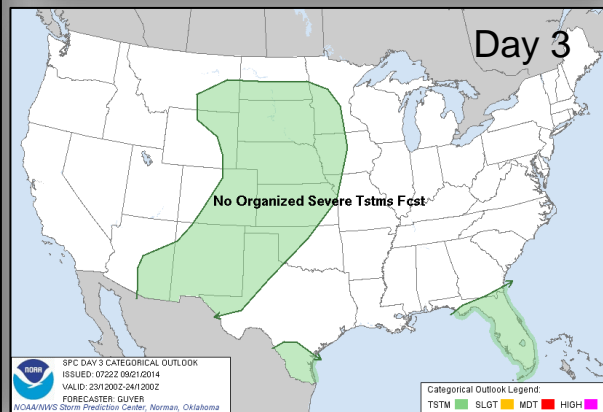
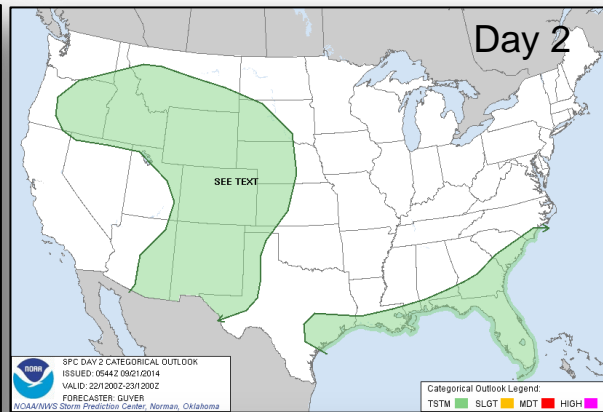
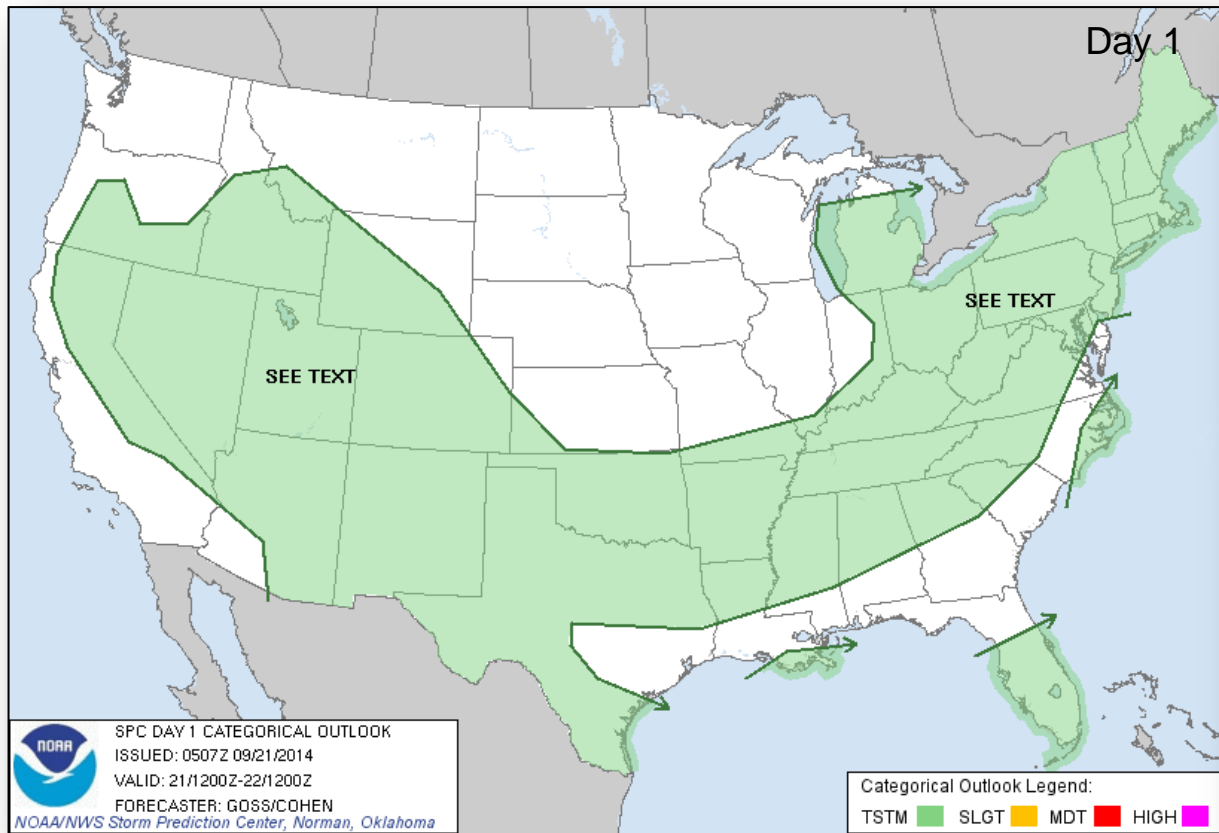
River Forecast



FEMA



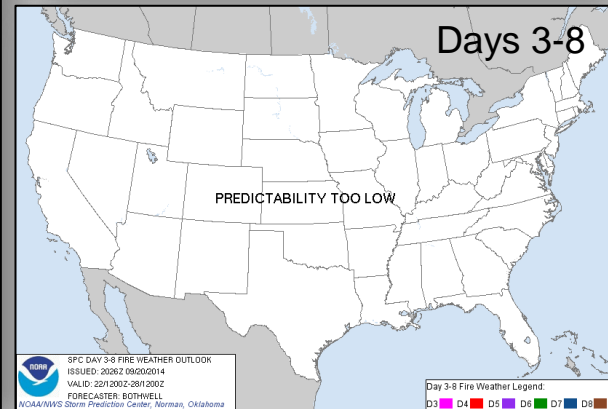
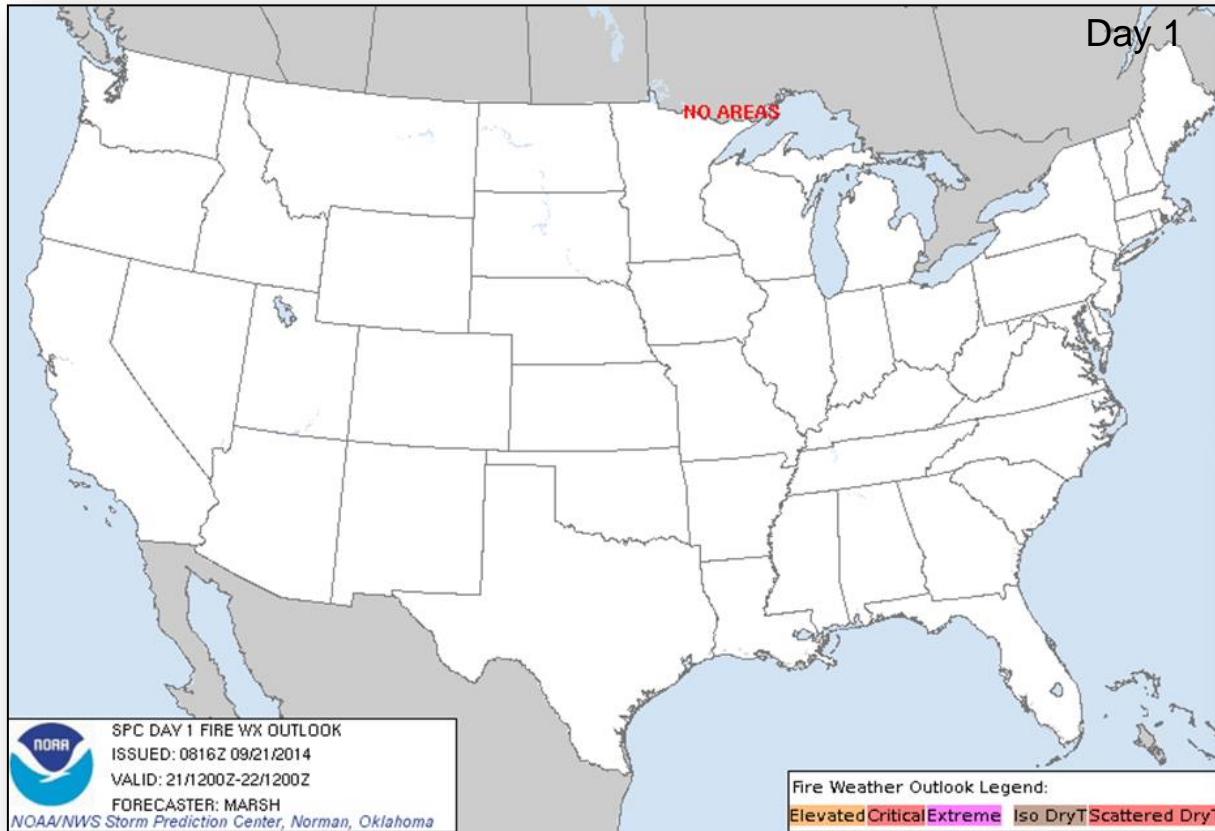
Convective Outlook, Days 1 – 3



Fire Weather Outlook, Days 1 – 8



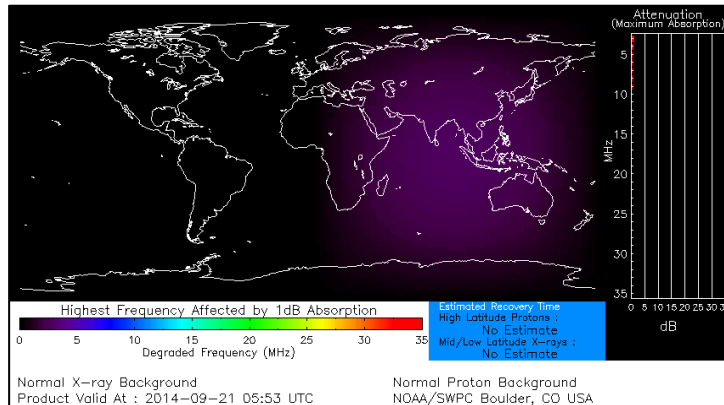
FEMA



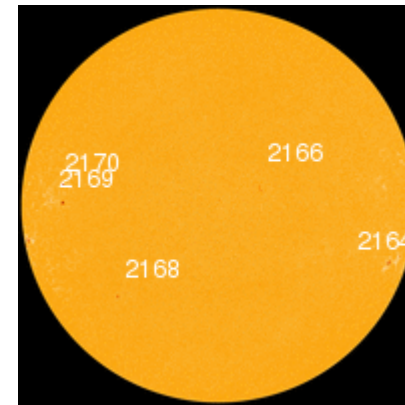
Space Weather

NOAA Scales Activity (Range: 1/minor to 5/extreme)	Past 24 Hours	Current	Next 24 Hours
Space Weather Activity:	None	None	None
• Geomagnetic Storms	None	None	None
• Solar Radiation Storms	None	None	None
• Radio Blackouts	None	None	None

HF Communication Impact



Sunspot Activity



FEMA Readiness – Deployable Teams/Assets



Deployable Teams/Assets									
Resource	Status	Total	Available		Partially Available	Not Available	Detailed Deployed Activated	Comments	Rating Criterion
FCO		39	17	44%	0	1	21		OFDC Readiness: FCO Green Yellow Red Type 1 3+ 2 1 Type 2 4+ 3 2 Type 3 4 3 2
FDRC		10	5	50%	0	0	5		FDRC 3 2 1
US&R		28	27	97%	1	1	0	<ul style="list-style-type: none"> NM-TF1 (Red for personnel shortages) CA-TF1 (Yellow for logistics & management) 	<ul style="list-style-type: none"> Green = Available/FMC Yellow = Available/PMC Red = Out-of-Service Blue = Assigned/Deployed
National IMAT		3	3	100%	0	0	0		<ul style="list-style-type: none"> Green: 3 avail Yellow: 1-2 avail Red: 0 avail (<i>Individual N-IMAT red if 50% of Section Chiefs and/or Team Leader is unavailable for deployment.</i>)
Regional IMAT		13	5	38%	3	3	2	<u>Partially Mission Capable (PMC):</u> <ul style="list-style-type: none"> Region II, III, VI <u>Not Mission Capable (NMC):</u> <ul style="list-style-type: none"> Region V, VII, IX (Team 1) <u>Deployed</u> <ul style="list-style-type: none"> Region X to WA, Region IX (Team 2) to CA 	<ul style="list-style-type: none"> Green: 7 or more avail Yellow: 4 - 6 teams available Red: > 8 teams deployed/unavailable <p><i>R-IMAT also red if TL Ops/Log Chief is unavailable and has no qualified replacement.</i></p>
MCOV		60	56	94%	0	4	0		<ul style="list-style-type: none"> Green = 80 – 100% avail Yellow = 60 – 79% avail Red = 59% or below avail Readiness remains 95%

FEMA Readiness – National/Regional Teams



National/Regional Teams									
Resource	Status	Total	Available		Partially Available	Not Available	Deployed/ Activated	Comments	Rating Criterion
NWC		5	5	100%	0	0	24/7		• Green = FMC • Yellow = PMC • Red = NMC
NRCC		2	344	89%	0	44	Not Activated		
HLT		1	N/A	N/A	0	1	Activated		
DEST							Not Activated		
RRCCs		10	10	100%	0	0	None		
RWCs/MOCs		10	10	100%	0	0	24/7		



FEMA

FEMA's mission is to support our citizens and first responders to ensure that as a nation we work together to build, sustain, and improve our capability to prepare for, protect against, respond to, recover from, and mitigate all hazards.