

The Disaster Center is dedicated to the idea that disaster mitigation is cost effective and individuals pursuing their own interest are the greatest potential force for disaster reduction.

Please consider making a small donation to the Disaster Center



When disaster mitigation is cost effective, we are on the road to bringing disasters to an end.



# **FEMA**

## **Daily Operations Briefing**

**Monday, September 22, 2014**

**8:30 a.m. EDT**

# Significant Activity: Sep 21 – 22



## **Significant Events:**

- CA & OR Wildfires

## **Tropical Activity:**

- Atlantic – Tropical cyclone activity not expected during the next 48 hours
- Eastern Pacific – Tropical Depression Polo, Disturbance 1 – (Medium, 60%)
- Central Pacific – No tropical cyclones expected through Tuesday night

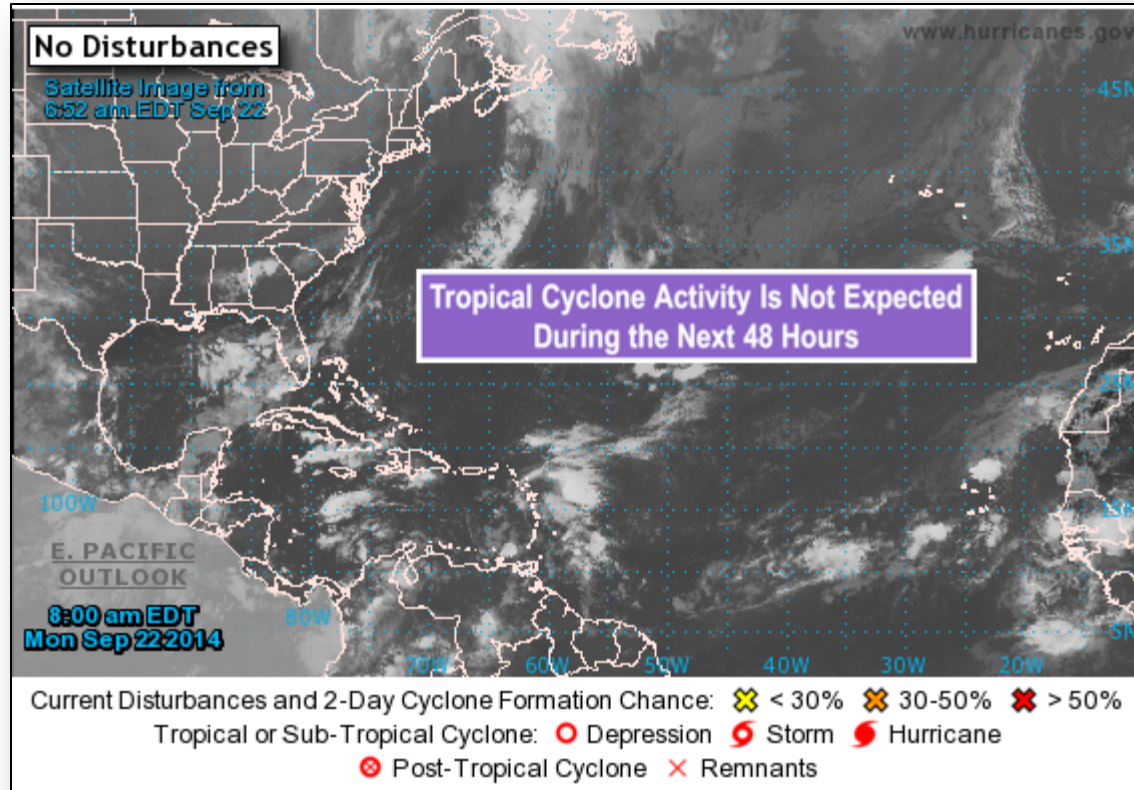
## **Significant Weather:**

- Rain and isolated to numerous thunderstorms – Southwest to Southern/Central Rockies and Northern Intermountain
- Rain – Great Lakes to New England
- Flash flooding is possible for portions of SE Arizona, New Mexico and SW Texas
- Elevated Fire Weather Areas: None
- Space Weather: Past 24-hours: None occurred; Next 24 hours: None predicted

**FEMA Readiness:** Region 2 RRCC to Lvl 3 for U.N. General Assembly as of 7:00 a.m. EDT

**Declaration Activity:** No activity

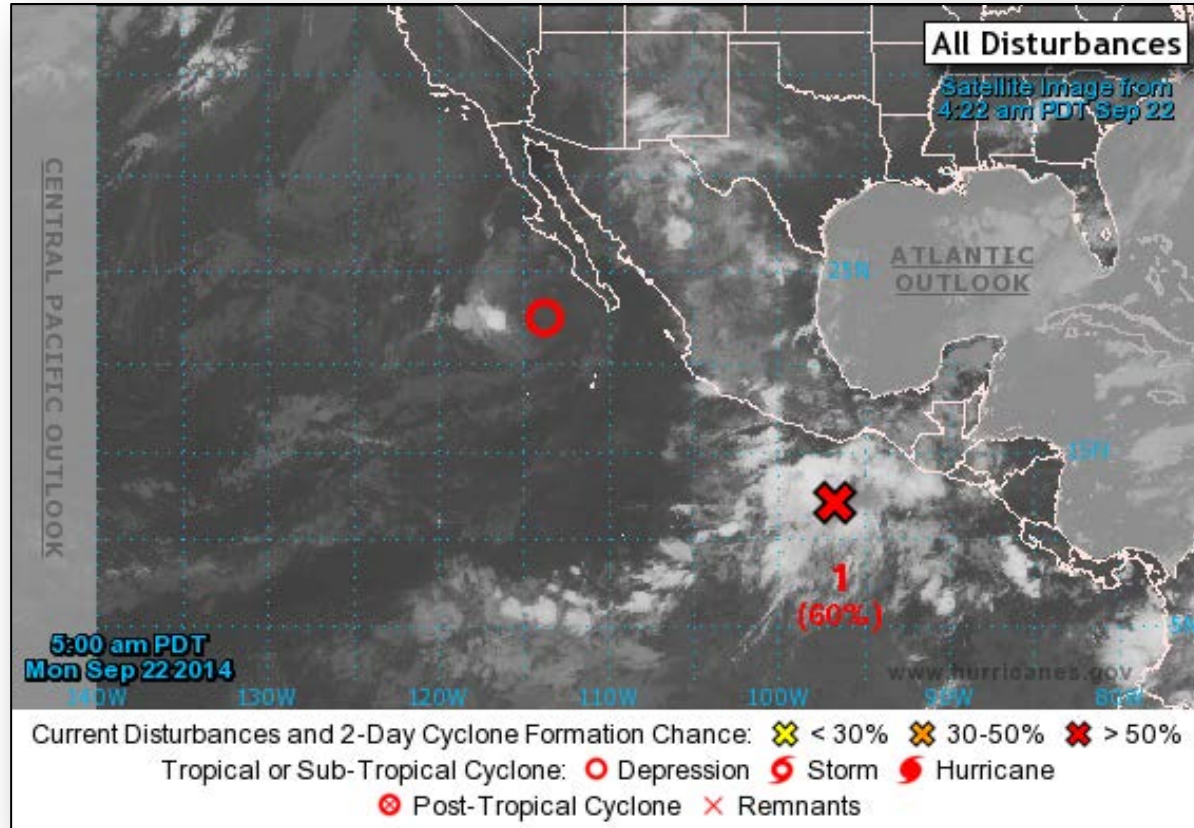
# 2-Day Tropical Outlook – Atlantic



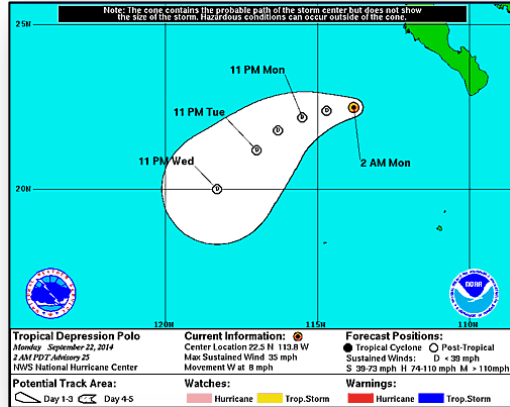
# 2-Day Tropical Outlook – Eastern Pacific



FEMA

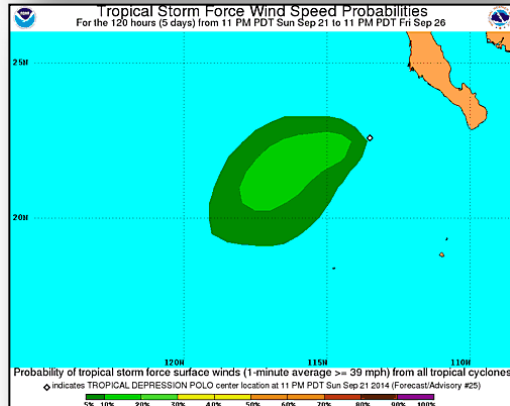


# Eastern Pacific – Tropical Depression Polo

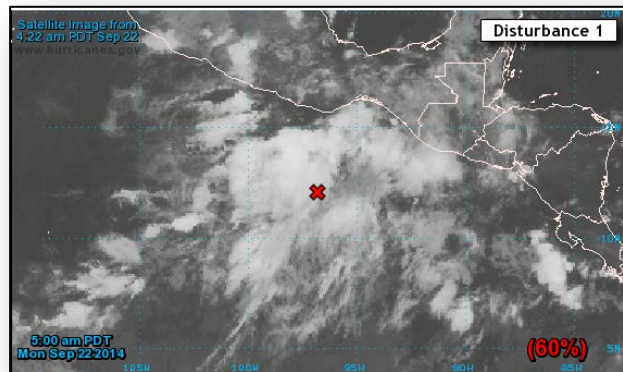


## Tropical Depression Polo (as of 5:00 a.m. EDT)

- Located 250 miles W of the southern tip of Baja California peninsula
- Moving WNW at 8 mph
- Maximum sustained winds 35 mph
- A slow westward motion expected today
- Weakening forecast during the next 48 hours
- Expected to become a remnant low later today
- No watches or warnings are in effect for the U.S.



# Eastern Pacific – Disturbance 1

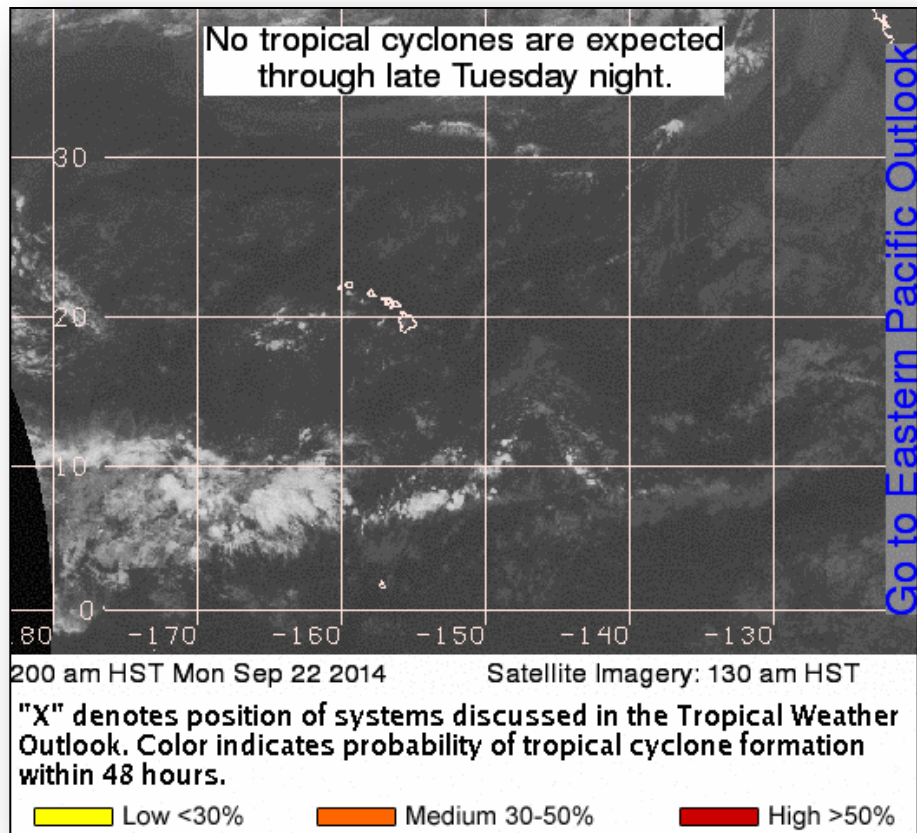


## **Disturbance 1 (as of 8:00 a.m. EDT)**

- Low pressure area located several hundred miles SSE of Acapulco, Mexico producing more concentrated showers and thunderstorms
- Environmental conditions generally conducive for development
- Tropical Depression likely to form during the next few days while it moves WNW at around 10 mph
- Formation chance:
  - Next 48-hours: High (60%)
  - Next 5 days: High (80%)



# 2-Day Tropical Outlook – Central Pacific





# Wildfire Summary



Fire Name (County)	FMAG #	Acres Burned	% Contained Est. Containment date	Evacuations (Residents)	Structures Threatened	Structures Destroyed	Fatalities / Injuries
California (1)							
King Fire (El Dorado County)	FEMA-5081-FM-CA	82,018 (+8,834)	17% (+7)	Mandatory	21,000 (12,000 homes)	32 (10 homes)	0/4(+2)
Oregon (1)							
36 Pit Fire (Clackamas County)	FEMA-5080-FM-OR	5,101 (+1,101)	45% (+15)	Mandatory	180 (+12) (mixed homes / businesses)	0	0/1

# Disaster Requests & Declarations

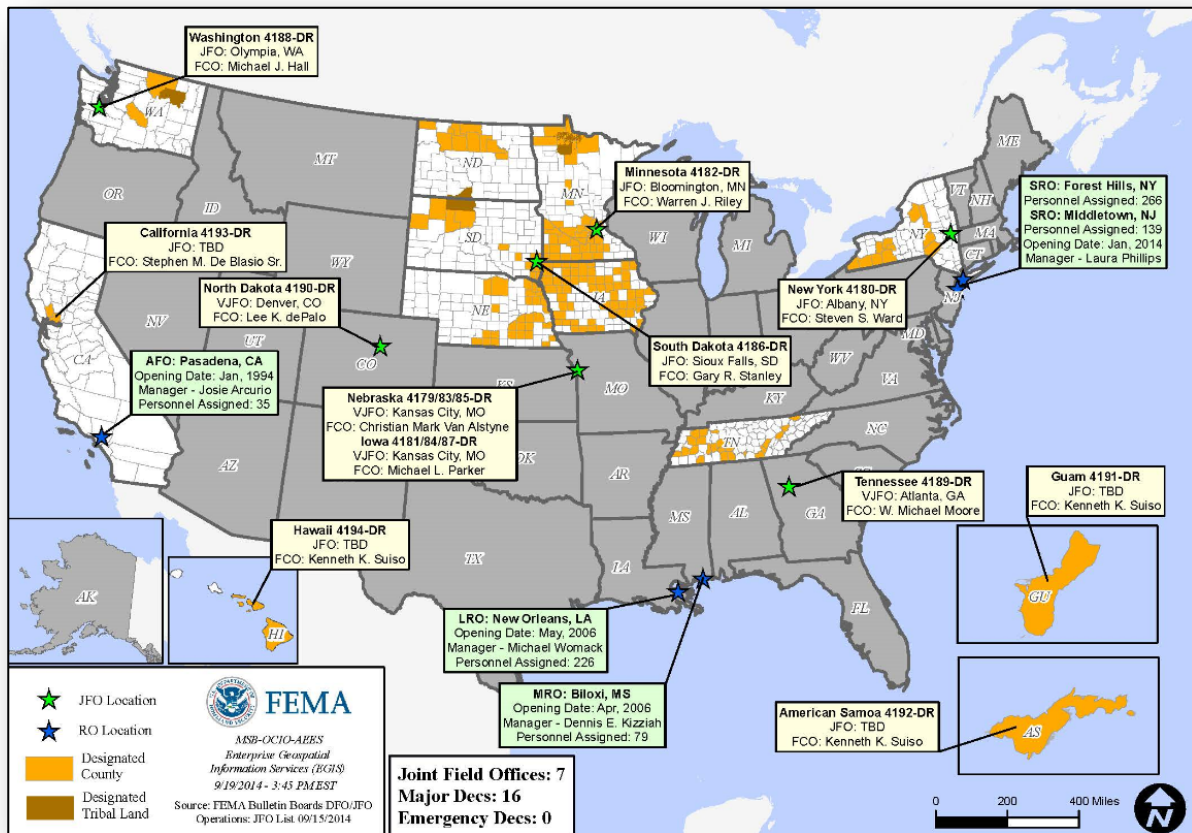


Declaration Requests in Process		Requests APPROVED (since last report)	Requests DENIED (since last report)
2	Date Requested	0	0
VT – DR Severe Storms and Flooding	September 5, 2014		
MI – DR Severe Storms and Flooding	September 17, 2014		

# Open Field Offices as of September 22



FEMA



# Joint Preliminary Damage Assessments

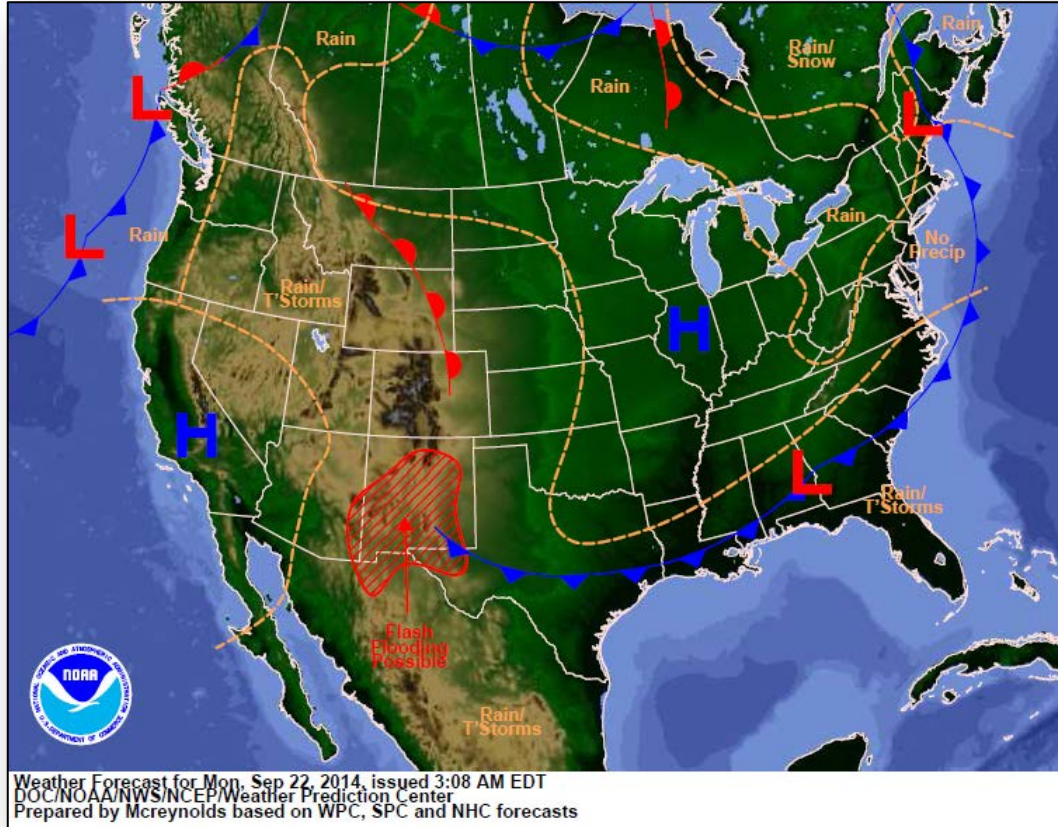


Region	State / Location	Event	IA/PA	Number of Counties		Start – End
				Requested	Complete	
II	NY	Heavy Rainfall & Flooding August 12-13, 2014	PA	1	0	9/18 – TBD
III	MD	Severe Storms August 12, 2014	PA	2	0	9/9 – TBD
VII	MO	Severe Storms September 9 -10, 2014	PA	16	0	TBD - TBD
VIII	MT	Severe Storms & Flooding August 21 – 28, 2014	PA	6	0	9/22 – 9/26
IX	NV	Severe Storms and Flooding September 8, 2014	IA	2	2	9/15 – 9/18
			PA	2	2	9/15 – 9/18

# National Weather Forecast

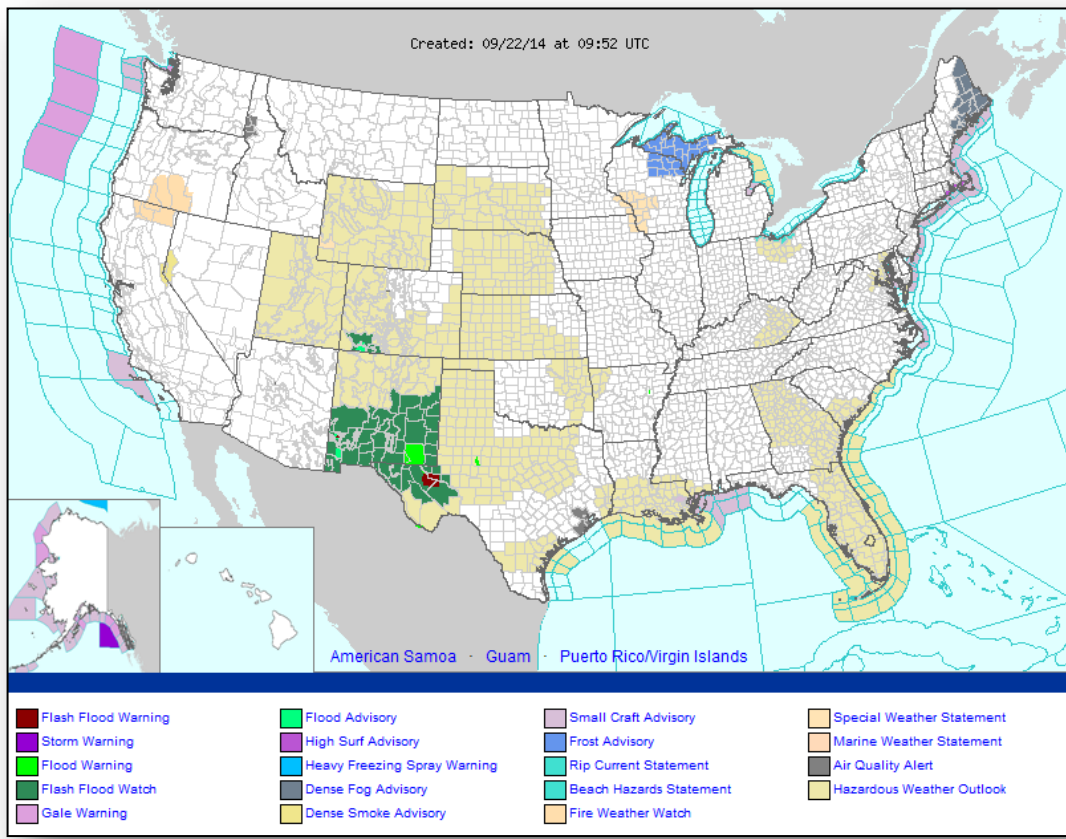


FEMA



Weather Forecast for Mon, Sep 22, 2014, issued 3:08 AM EDT  
DOC/NOAA/NWS/NCEP/Weather Prediction Center  
Prepared by McCreynolds based on WPC, SPC and NHC forecasts

# Active Watches/Warnings

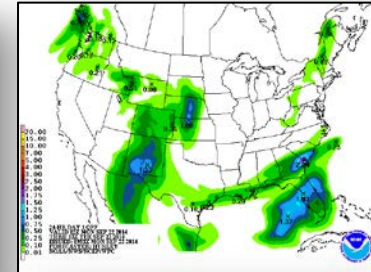
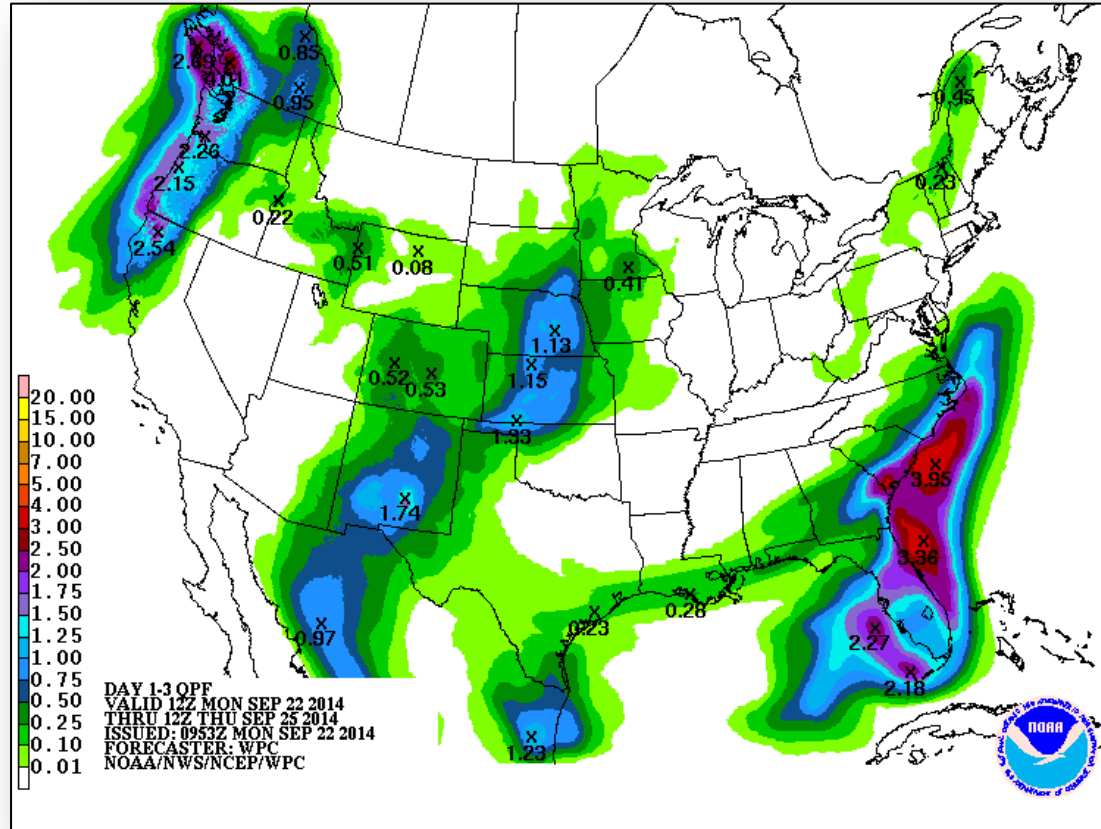




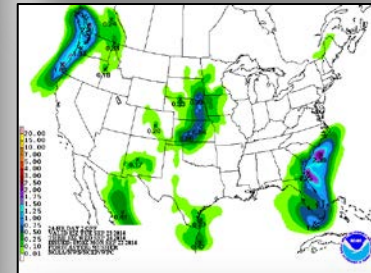
# Precipitation Forecast – 3 Day



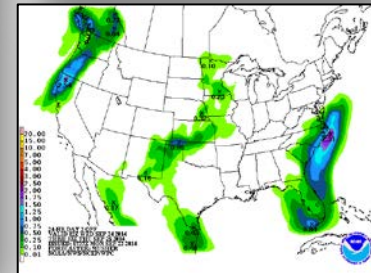
FEMA



Day 1



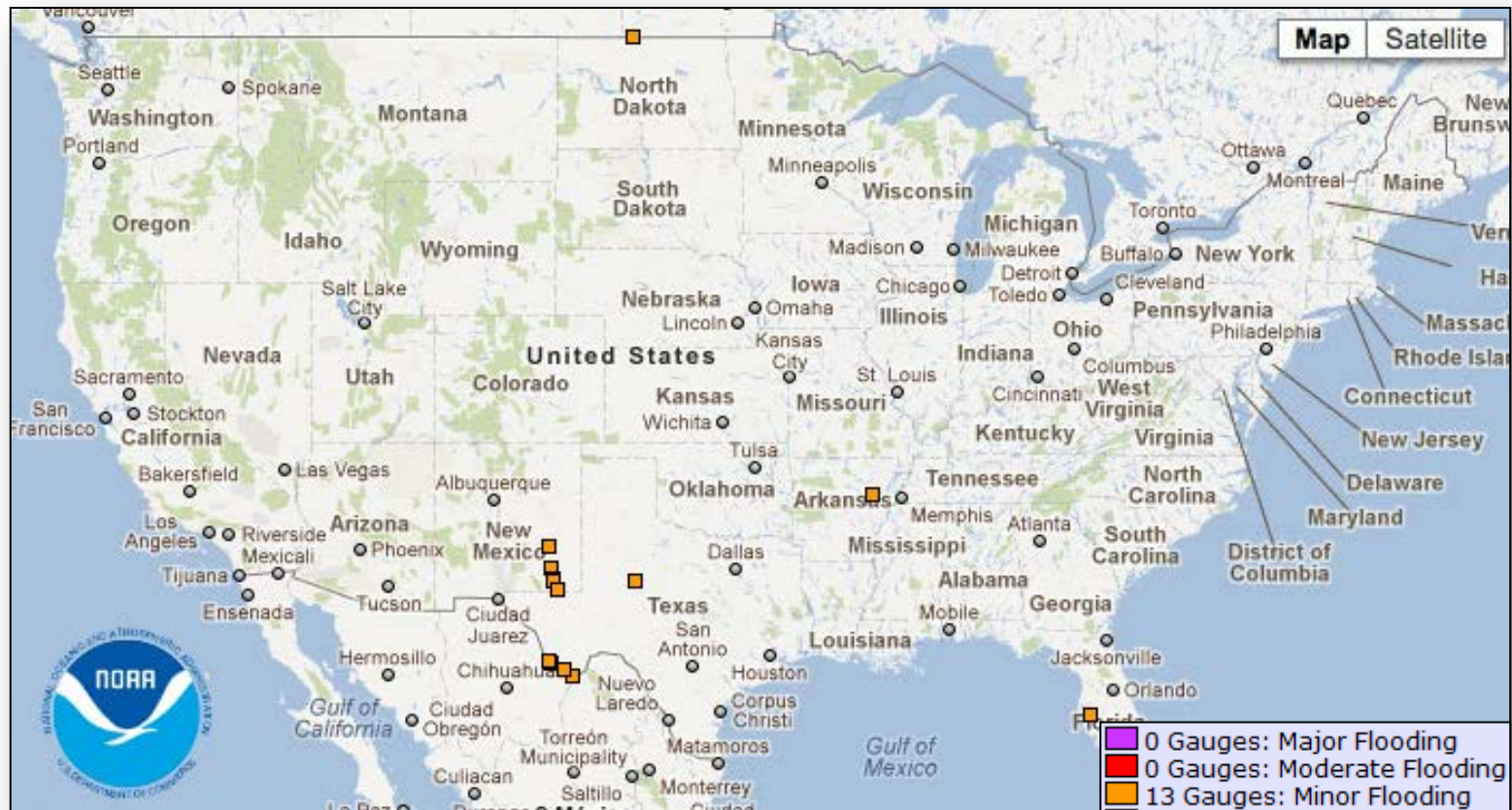
Day 2



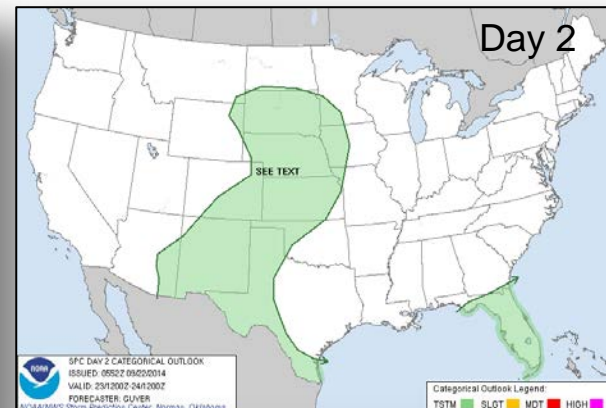
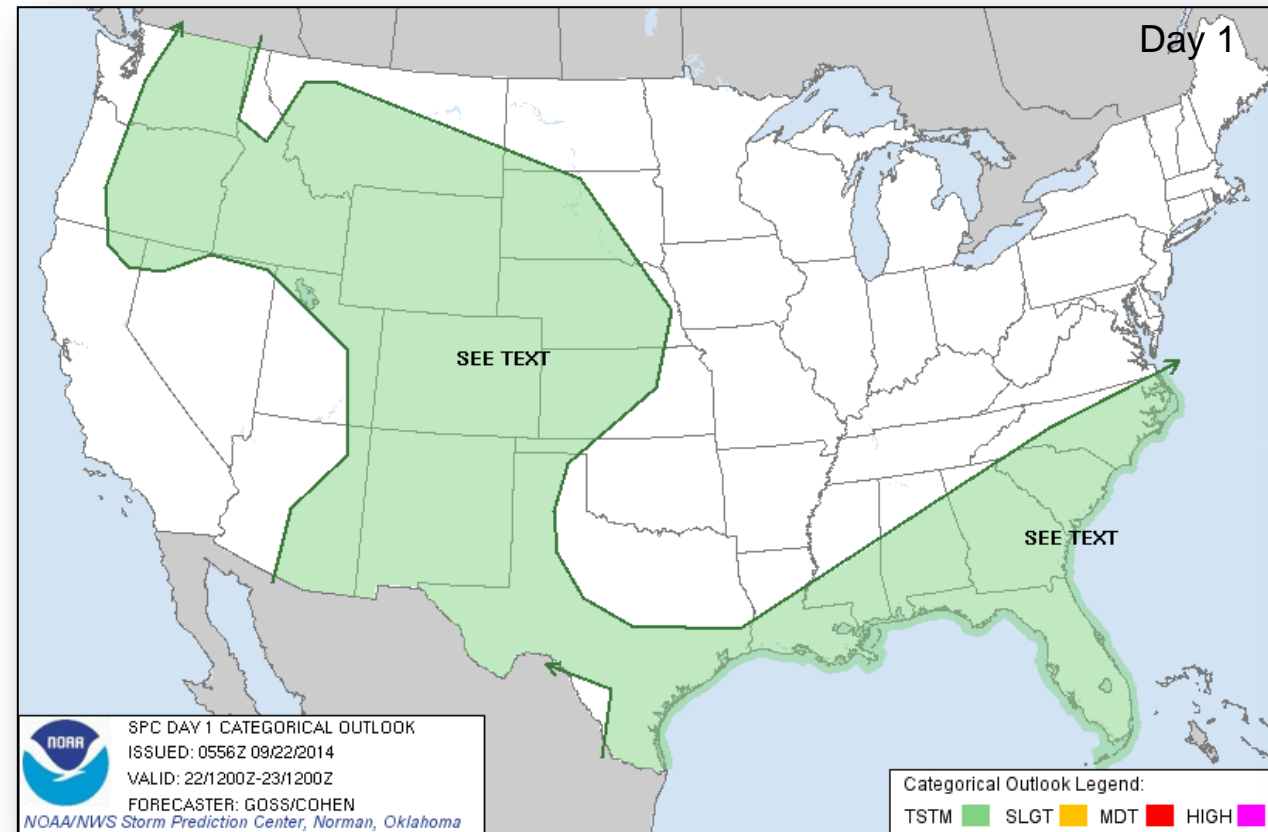
Day 3



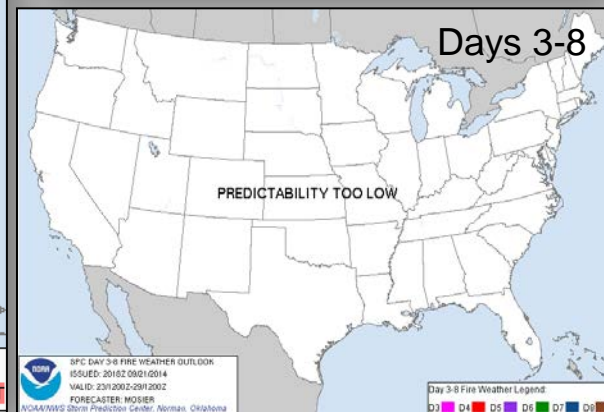
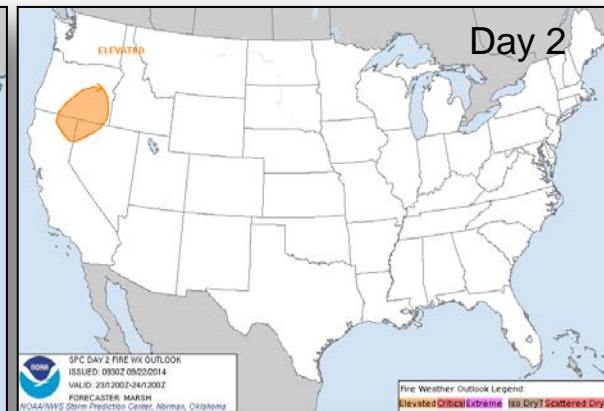
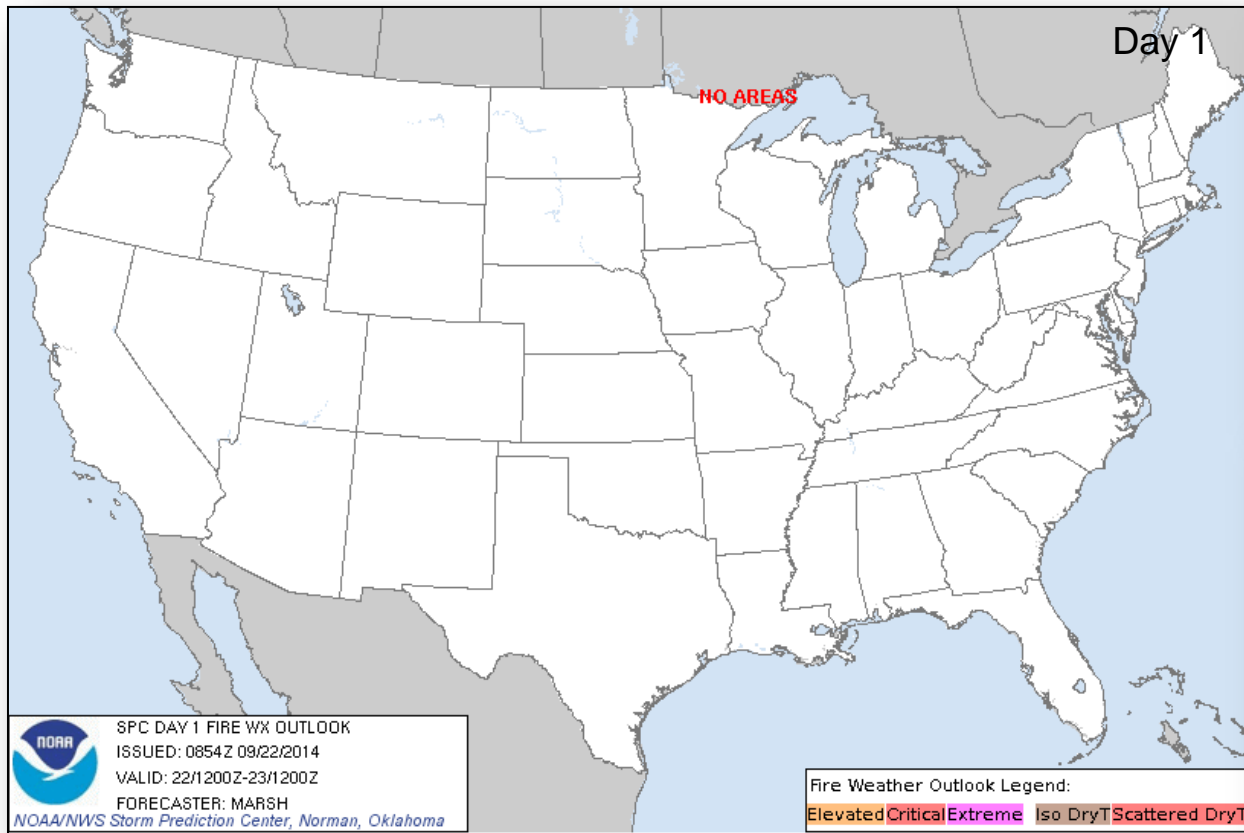
# River Forecast



# Convective Outlook, Days 1 – 3



# Fire Weather Outlook, Days 1 – 8



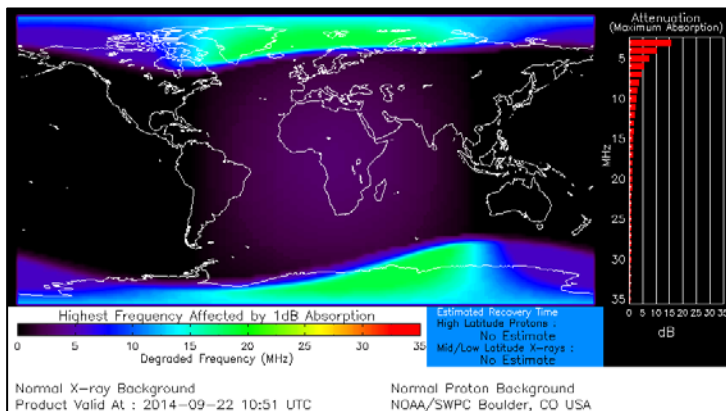
# Space Weather



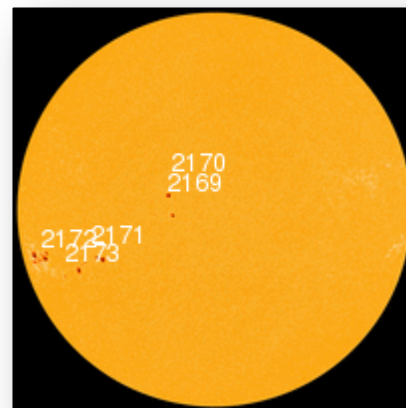
FEMA

NOAA Scales Activity (Range: 1/minor to 5/extreme)	Past 24 Hours	Current	Next 24 Hours
Space Weather Activity:	None	None	None
• Geomagnetic Storms	None	None	None
• Solar Radiation Storms	None	None	None
• Radio Blackouts	None	None	None

## HF Communication Impact



## Sunspot Activity



# FEMA Readiness – Deployable Teams/Assets



Deployable Teams/Assets									
Resource	Status	Total	Available		Partially Available	Not Available	Detailed Deployed Activated	Comments	Rating Criterion
FCO		39	17	44%	0	1	21		OFDC Readiness: FCO   Green   Yellow   Red Type 1   3+   2   1 Type 2   4+   3   2 Type 3   4   3   2
FDRC		10	5	50%	0	0	5		FDRC   3   2   1
US&R		28	27	97%	1	1	0	<ul style="list-style-type: none"><li>NM-TF1 (Red for personnel shortages)</li><li>CA-TF1 (Yellow for logistics &amp; management)</li></ul>	<ul style="list-style-type: none"><li>Green = Available/FMC</li><li>Yellow = Available/PMC</li><li>Red   = Out-of-Service</li><li>Blue   = Assigned/Deployed</li></ul>
National IMAT		3	3	100%	0	0	0		<ul style="list-style-type: none"><li>Green: 3 avail</li><li>Yellow: 1-2 avail</li><li>Red: 0 avail (<i>Individual N-IMAT red if 50% of Section Chiefs and/or Team Leader is unavailable for deployment.</i>)</li></ul>
Regional IMAT		13	5	38%	3	3	2	<u>Partially Mission Capable (PMC):</u> <ul style="list-style-type: none"><li>Region II, III, VI</li></ul> <u>Not Mission Capable (NMC):</u> <ul style="list-style-type: none"><li>Region V, VII, IX (Team 1)</li></ul> <u>Deployed</u> <ul style="list-style-type: none"><li>Region X to WA, Region IX (Team 2) to CA</li></ul>	<ul style="list-style-type: none"><li>Green: 7 or more avail</li><li>Yellow: 4 - 6 teams available</li><li>Red: &gt; 8 teams deployed/unavailable</li></ul> <p><i>R-IMAT also red if TL Ops/Log Chief is unavailable and has no qualified replacement.</i></p>
MCOV		60	56	94%	0	4	0		<ul style="list-style-type: none"><li>Green = 80 – 100% avail</li><li>Yellow = 60 – 79% avail</li><li>Red = 59% or below avail</li><li>Readiness remains 95%</li></ul>



# FEMA Readiness – National/Regional Teams



National/Regional Teams									
Resource	Status	Total	Available		Partially Available	Not Available	Deployed/ Activated	Comments	Rating Criterion
NWC		5	5	100%	0	0	24/7		• Green = FMC • Yellow = PMC • Red = NMC
NRCC		2	344	89%	0	44	Not Activated		
HLT		1	N/A	N/A	0	1	Activated		
DEST							Not Activated		
RRCCs		10	10	100%	0	0	1	R2 – Lvl 3 (for U.N. as of 7:00 a.m.)	
RWCs/MOCs		10	10	100%	0	0	24/7		



# FEMA

**FEMA's mission is to support our citizens and first responders to ensure that as a nation we work together to build, sustain, and improve our capability to prepare for, protect against, respond to, recover from, and mitigate all hazards.**