

The Disaster Center is dedicated to the idea that disaster mitigation is cost effective and individuals pursuing their own interest are the greatest potential force for disaster reduction.

Please consider making a small donation to the Disaster Center



When disaster mitigation is cost effective, we are on the road to bringing disasters to an end.



FEMA

Daily Operations Briefing

Wednesday, September 23, 2015

8:30 a.m. EDT

Significant Activity: Sep 22-23



Significant Events: Papal Visit, September 23-27

Tropical Activity:

- Atlantic: Tropical: Tropical Storm Ida
- Eastern Pacific: Tropical cyclone activity is not expected next 48 hours
- Central Pacific: Disturbance 1 – High (70%)
- Western Pacific: No activity affecting U.S. interests

Significant Weather:

- Rain and thunderstorms – Southwest to Upper Mississippi Valley; Gulf Coast to Southeast
- Flash flooding possible – Central/Northern Plains to Upper Mississippi Valley
- Red Flag Warnings – none
- Critical/Elevated Fire Weather areas – none
- Space weather: Past 24 hours – no space weather storms occurred; next 24 hours – no space weather storms predicted

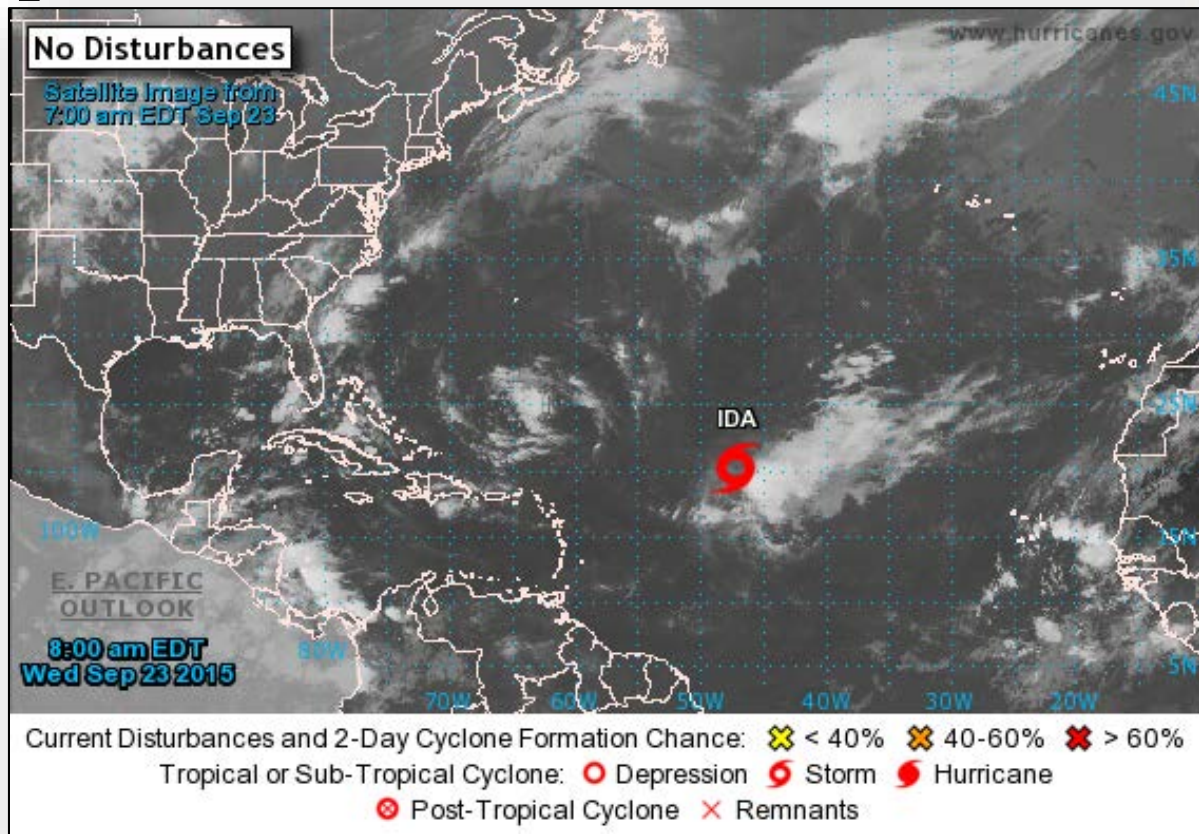
Declaration Activity:

- Major Disaster Declaration – CA (Valley Fire)

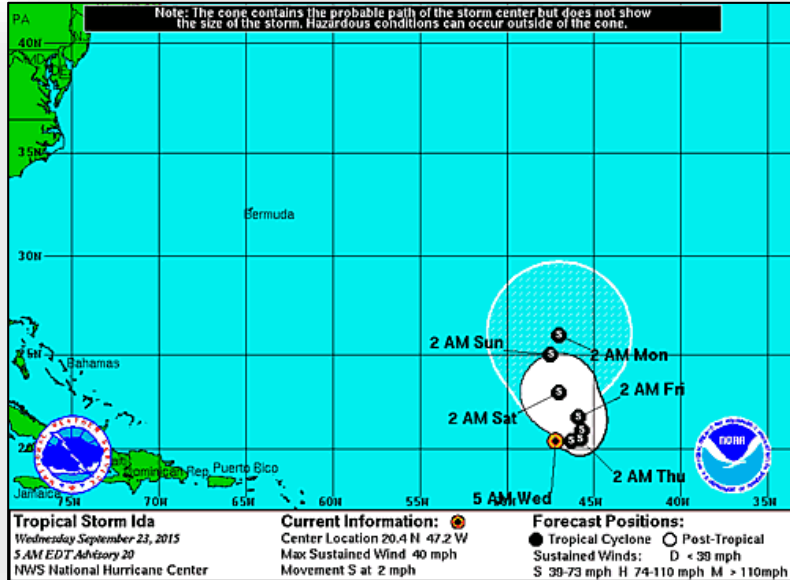
2-Day Tropical Outlook – Atlantic



FEMA



Atlantic – Tropical Storm Ida



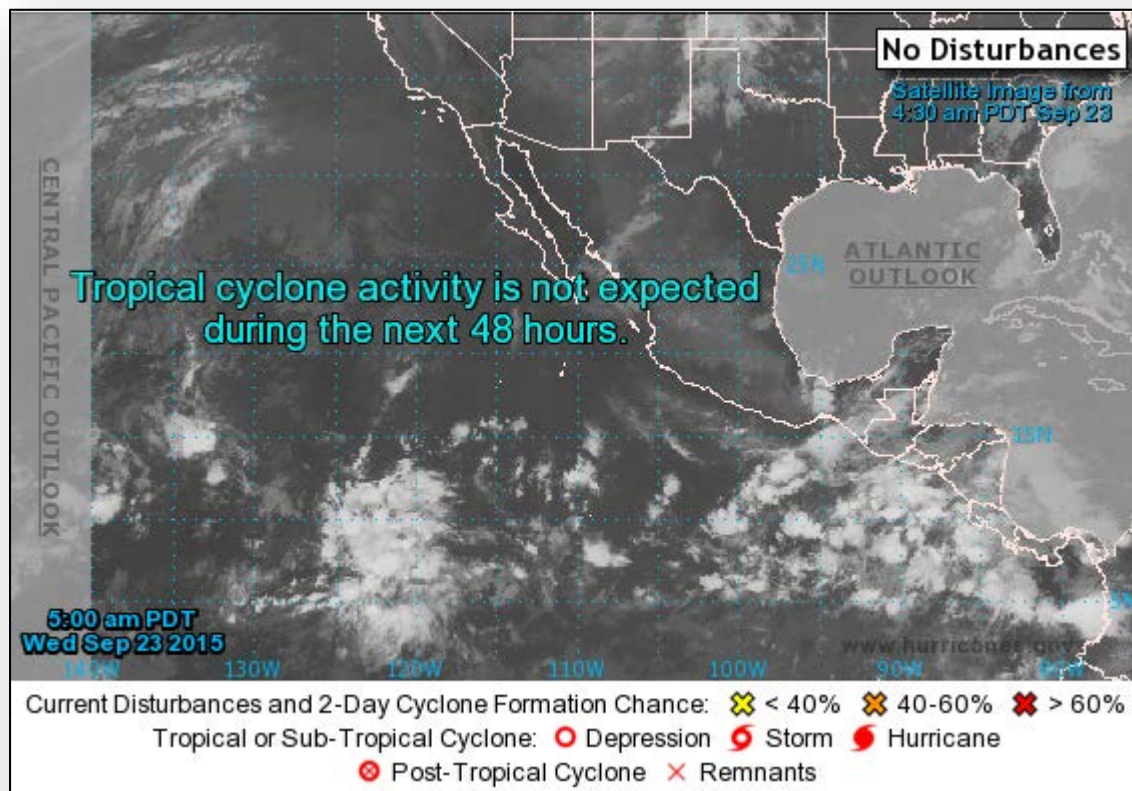
Tropical Storm Ida (Advisory #20, as of 5:00 a.m. EDT)

- Located 1,045 miles E of northern Leeward Islands
- Moving S at 2 mph
- Slow E motion is expected later today, followed by a turn N on Thurs
- Maximum sustained winds 40 mph
- Little change in strength forecast through Thurs night
- Tropical storm force winds extend 175 miles

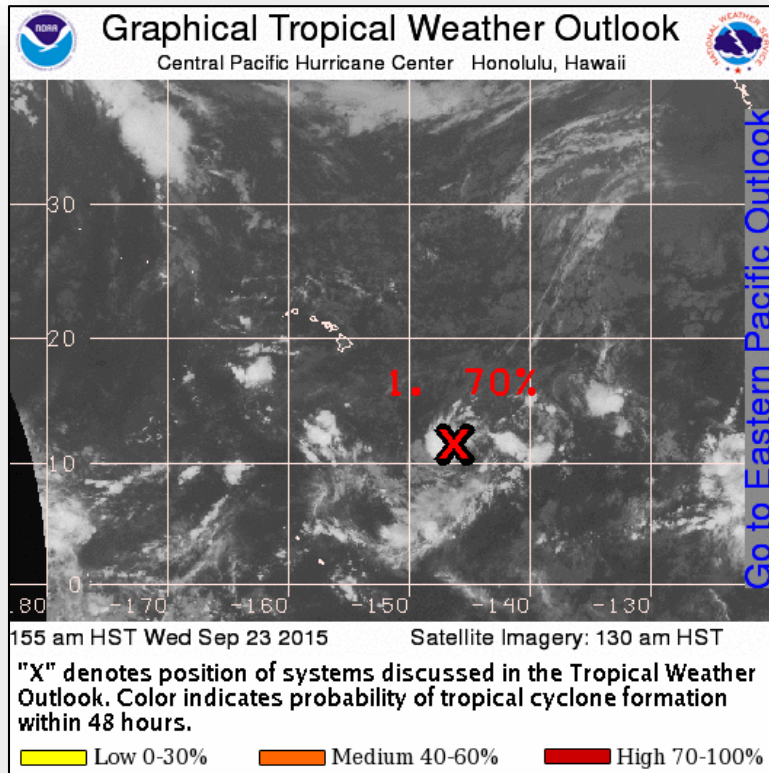
2 – Day Tropical Outlook – Eastern Pacific



FEMA



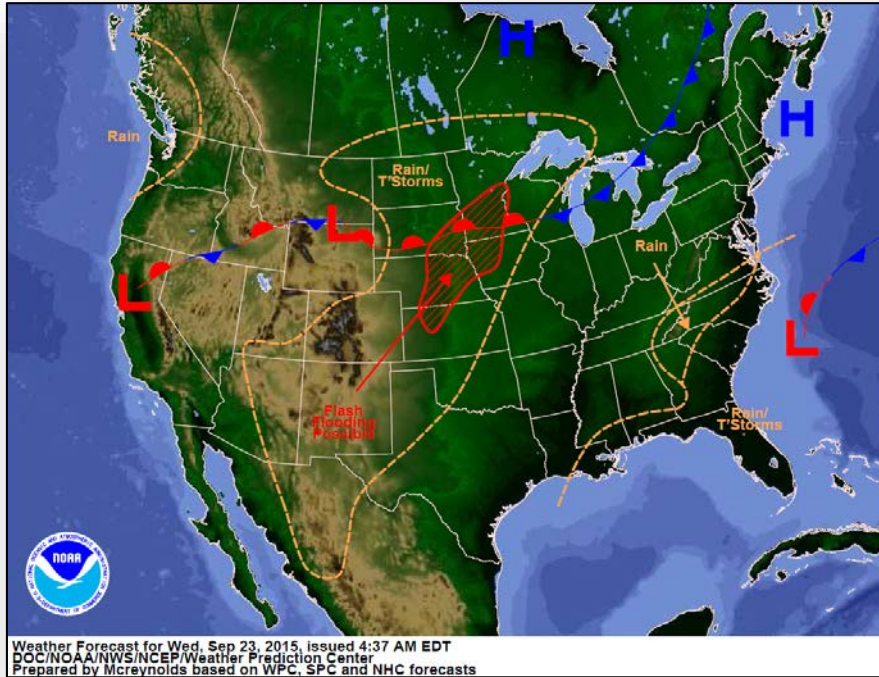
2 – Day Tropical Outlook – Central Pacific



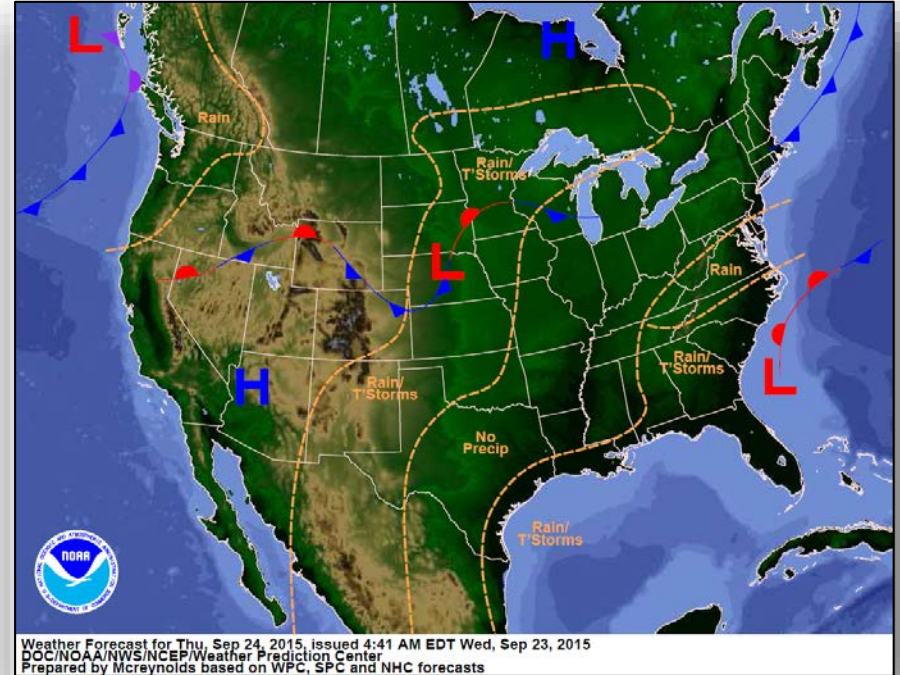
Disturbance 1: *(as of 8:00 a.m. EDT)*

- Located 800 miles SE of Hilo, HI
- Moving slowly NNW
- Environmental conditions remain conducive for further development next couple of days
- Formation chance through 48 hours: High (70%)

National Weather Forecast



Today

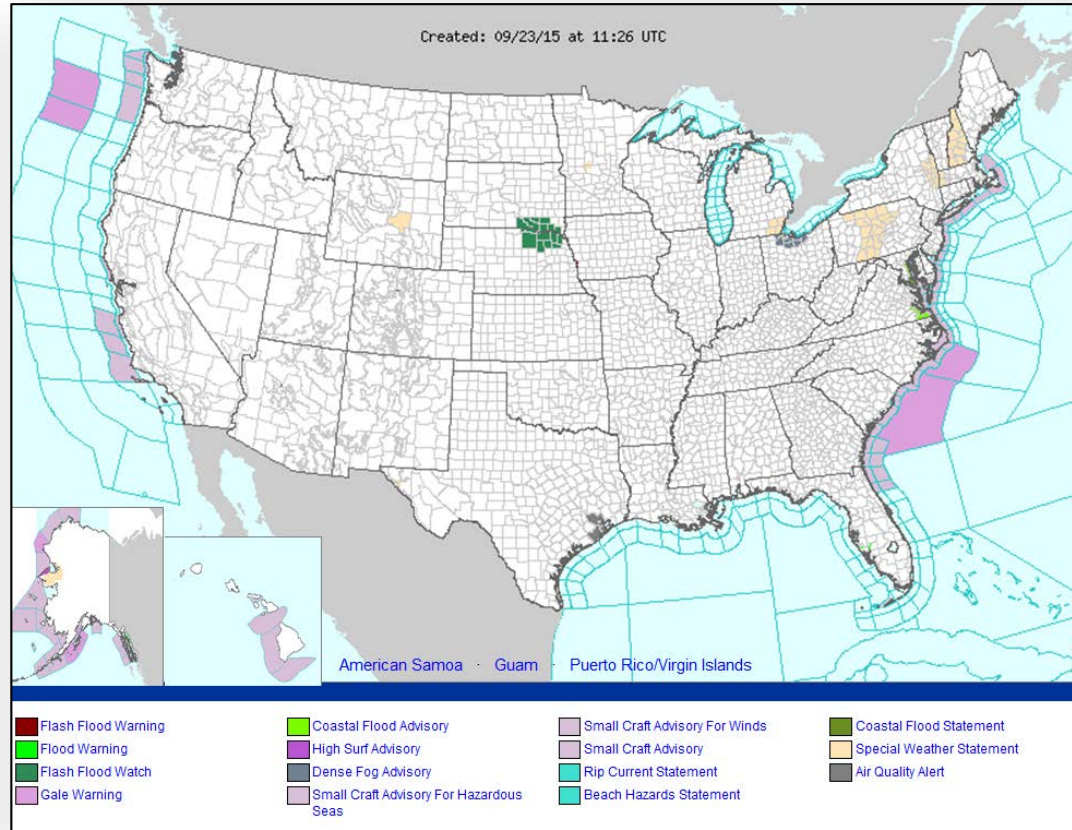


Tomorrow

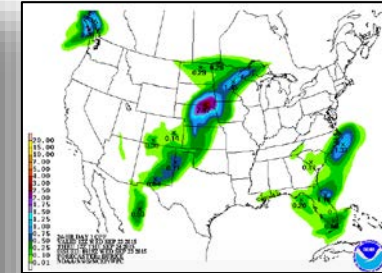
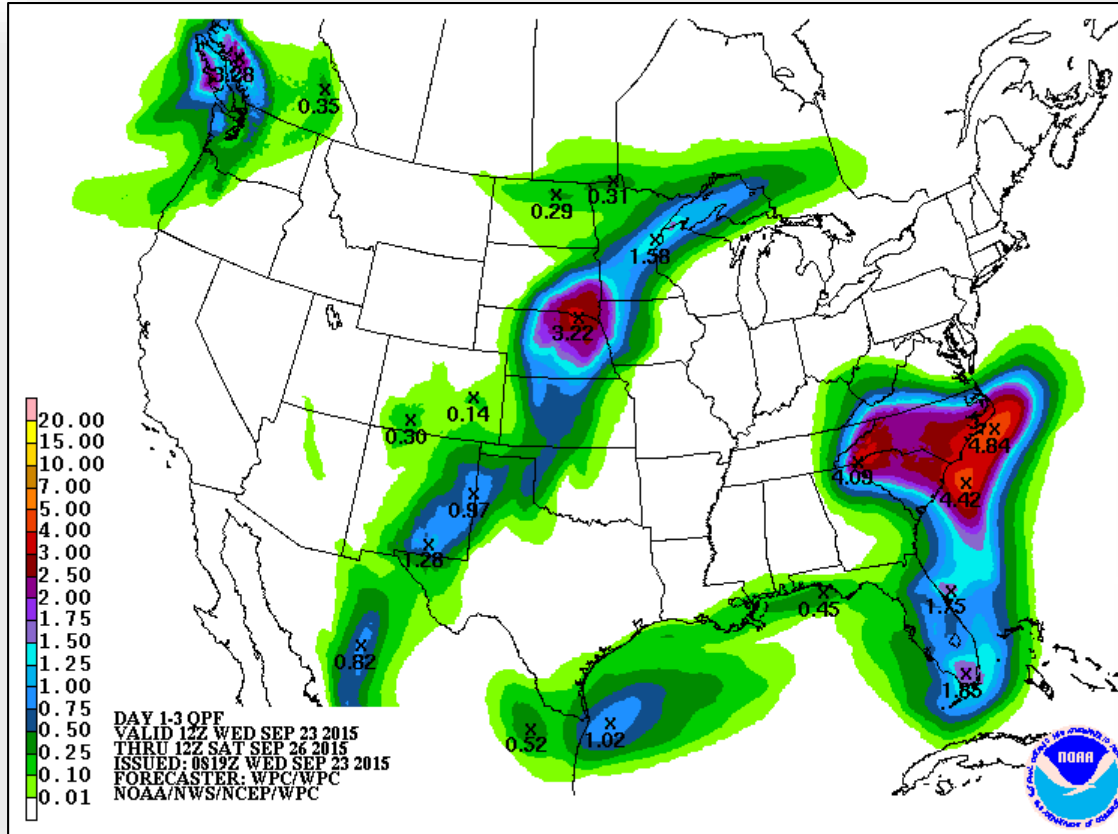
Active Watches/Warnings



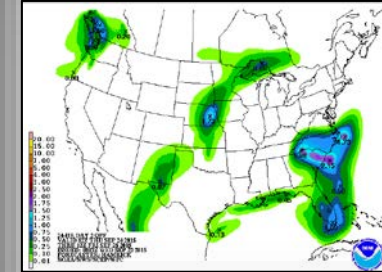
FEMA



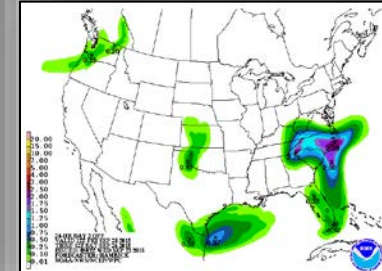
Precipitation Forecast, 1 – 3 Day



Day 1



Day 2

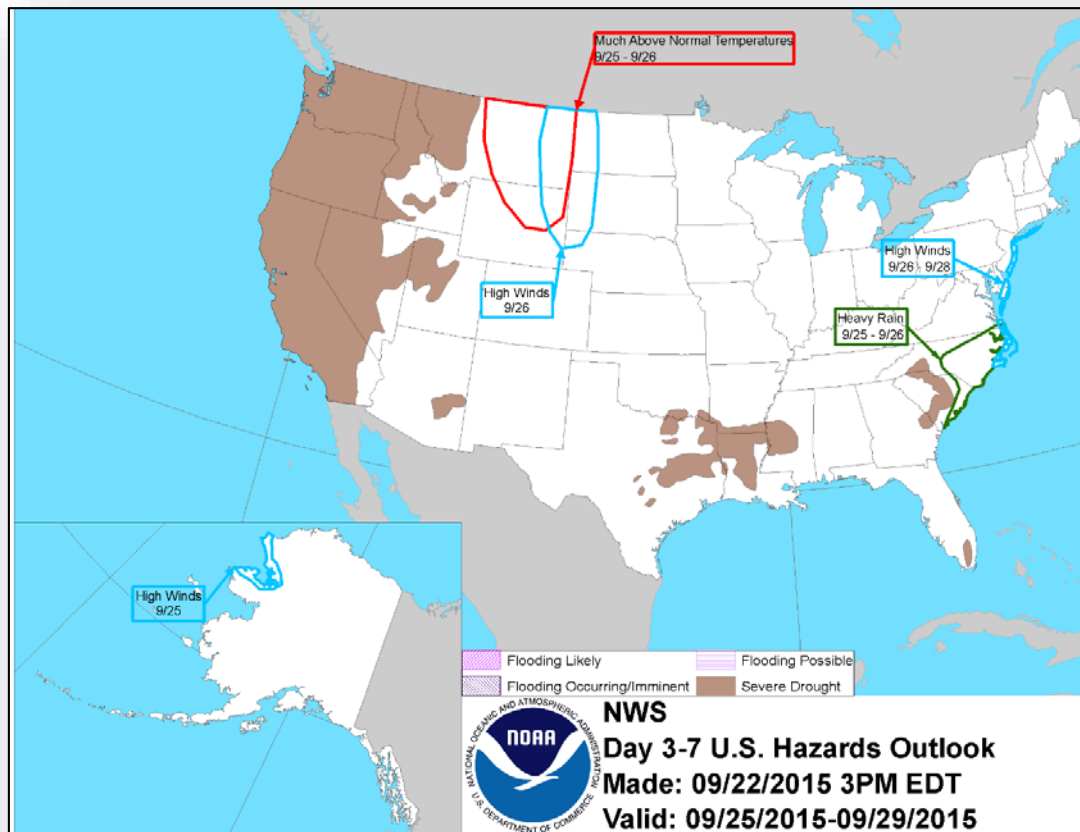


Day 3

Hazard Outlook, September 25 – 29

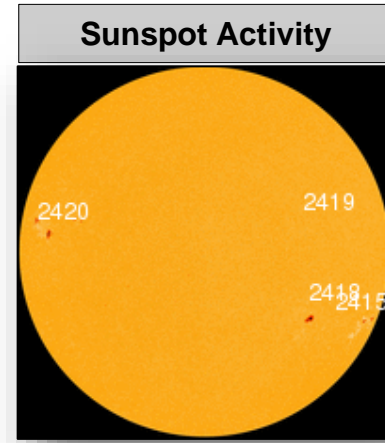
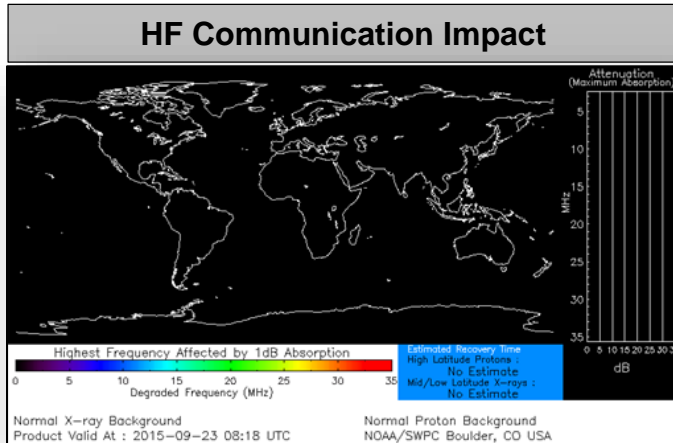


FEMA



Space Weather

	Past 24 Hours	Current	Next 24 Hours
Space Weather Activity:	None	None	None
• Geomagnetic Storms	None	None	None
• Solar Radiation Storms	None	None	None
• Radio Blackouts	None	None	None



Wildfire Summary



Fire Name (County)	FMAG #	Acres burned	% Contained	Evacuations (Residents)	Structures Threatened	Structures Damaged/ Destroyed	Fatalities/ Injuries
California							
Valley Fire (Lake, Napa, Sonoma Counties)	FEMA-5112-FM-CA	76,067 (+286)	79% (+4%)	9,183 (-50)	3,054 (-465) (3,043 homes)	90 (37 homes) /1,910 (1,238 homes)	3/4
Response: Region IX: Enhanced Watch Region IX: IMAT-3 & 2 LNOs deployed to CA CA EOC & Regional EOCs: Fully Activated				Shelters: ARC & Independent shelters: 8 (-1) open with 478 (-116) occupants (ARC Midnight Shelter Report 23 Sep)			

Disaster Requests & Declarations



Declaration Requests in Process		Requests APPROVED (since last report)	Requests DENIED (since last report)
2	Date Requested	1	0
FL – DR (Appeal) Severe Storms and Flooding (IA)	September 11, 2015		
CA – DR for Butte Fire	September 9, 2015		
CA – DR for Valley Fire	September 12, 2015	Declared September 22, 2015	

Major Disaster Declaration – CA



FEMA-4240-DR-CA

- Major Disaster Declaration was declared September 22, 2015 for the State of California
- For Valley Fire beginning on September 12 and continuing
- Provides:
 - Individual Assistance for Lake County
 - Hazard Mitigation statewide
- FCO is Timothy J. Scranton

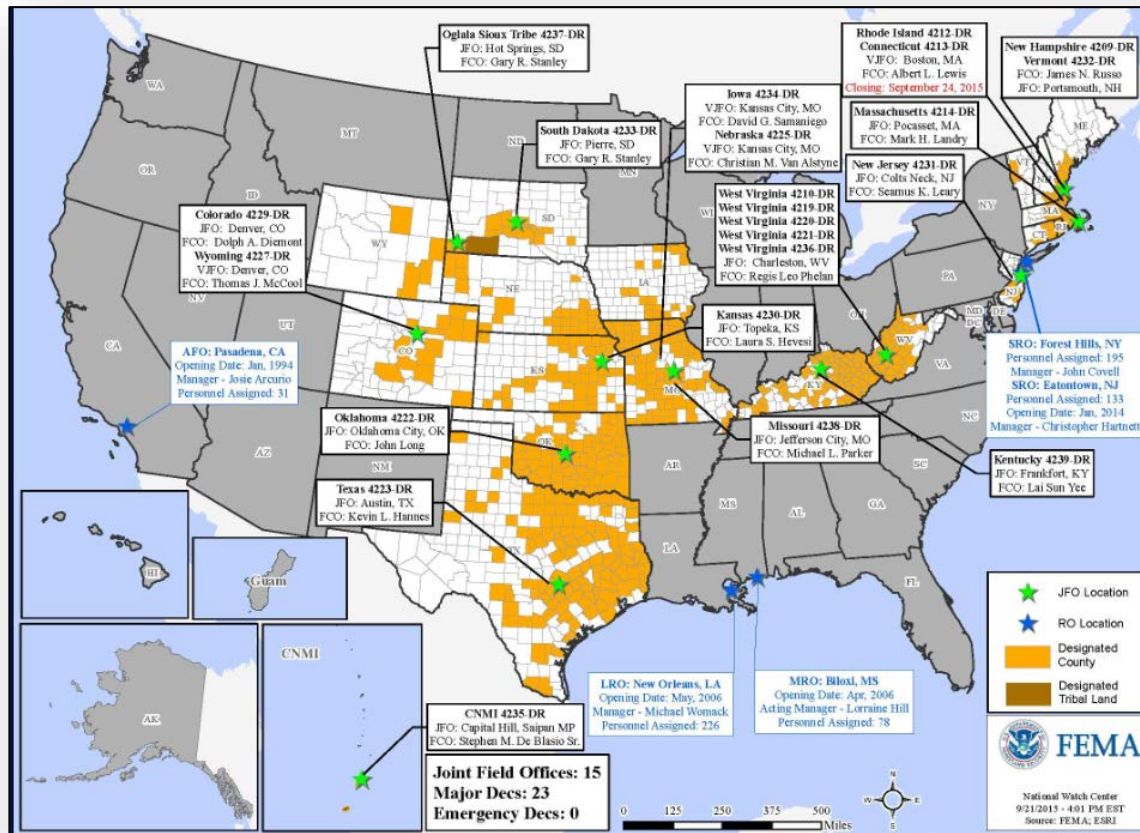


 Declared IA county

Open Field Offices as of September 23



FEMA



Joint Preliminary Damage Assessments



Region	State / Location	Event	IA/PA	Number of Counties		Start – End
				Requested	Complete	
IX	CA	Butte Fire September 9, 2015 & ongoing	IA	1	0	9/17 – TBD
			PA	1	0	9/23 - TBD
IX	CA	Valley Fire September 12 & ongoing	IA	1	1	9/16 – 9/20
			PA	1	0	9/22 - TBD
X	WA	Wildfires June 29, 2015 & ongoing	IA	5	5	9/14 – 9/18
			PA	5	0	9/21 – TBD
X	Warm Springs Reservation (OR)	County Line 2 Fire August 12, 2015 & ongoing	PA	1	0	9/21 - TBD

FEMA Readiness – Deployable Teams /Assets



Deployable Teams/Assets									
Resource	Status	Total	FMC Available		Partially Available	Not Available	Detailed, Deployed, Activated	Comments	Rating Criterion
FCO		35	12	34%	0	1	22		OFDC Readiness: FCO Green Yellow Red Type 1 3+ 2 1 Type 2 4+ 3 2 Type 3 4 3 2
FDRC		9	5	56%	0	0	4		FDRC 3 2 1
US&R		28	25	89%	1	2	0	NY-TF1 (Yellow) – Sep 10-30 for Papal Visit Support PA-TF1 (Red) - Sep 21-24 for In-State Exercise; (Yellow) Sep 29 – Oct 5 for Cache Reconstitution NM-TF1 (Red) – Personnel shortages	<ul style="list-style-type: none">• Green = Available/FMC• Yellow = Available/PMC• Red = Out-of-Service• Blue = Assigned/Deployed
National IMAT		3	3	100%	0	0	0		<ul style="list-style-type: none">• Green: 3 avail• Yellow: 1-2 avail• Red: 0 avail (Individual N-IMAT red if 50% of Section Chiefs and/or Team Leader is unavailable for deployment.)
Regional IMAT		13	8	61%	0	0	5	Deployed: RVI (Team 2) Deployed to LA (Exercise) available for real world event RVII Deployed to MO RVIII (Team 1) Deployed to SD & CO RIX (Team 1) Deployed to Guam/CNMI RIX (Team 2) Deployed to CA for wildfires RX Deployed to WA to supporting PDAs for wildfires	<ul style="list-style-type: none">• Green: 7 or more avail• Yellow: 4 - 6 teams available• Red: > 8 teams deployed/unavailable <i>R-IMAT also red if TL Ops/Log Chief is unavailable & has no qualified replacement</i>
MCOV		59	48	81%	0	11	0		<ul style="list-style-type: none">• Green = 80 – 100% avail• Yellow = 60 – 79% avail• Red = 59% or below avail• Readiness remains 95%

FEMA Readiness – National/Regional Teams



National/Regional Teams									
Resource	Status	Total	FMC Available		Partially Available	Not Available	Status	Comments	Rating Criterion
NWC		5	5	100%	0	0	Activated	Enhanced Watch (days only) supporting UNGA & Papal Visit (NSSE)	<ul style="list-style-type: none"> • Green = FMC • Yellow = PMC • Red = NMC
NRCC		2	344	89%	0	44	Not Activated		
HLT		1	N/A	N/A	0	0	Activated		
DEST							Not Activated		
RRCCs		10	10	100%	0	0	Not Activated		
RWCs/MOCs		10	10	100%	0	0	Activated	Region III – Enhanced Watch (24/7) supporting Papal Visit Region IX - Enhanced Watch (days only) supporting CA wildfires	

2015 National Preparedness Month (NPM)



Don't Wait – Communicate – Make Your Emergency Plan Today

Week 4 Theme: Power Outage

- This week (sept 20-26) focuses on power outages
- Leads up to National PrepareAthon! Day (Sept 30)

Awareness

- Before
 - Charge cell phones/any battery powered devices
 - Know how to operate garage door manually
 - Keep car gas tank full
- During
 - Only use flashlight for emergency lighting
 - Keep refrigerator door closed (unopened door can keep food cold for about 4 hours/freezer up to 48 hours)
 - Turn off disconnected appliances
 - Never run generator inside home or garage
- After
 - Throw away bad food
 - Restock emergency kit



For additional information:

- www.ready.gov/power-outage



FEMA

FEMA's mission is to support our citizens and first responders to ensure that as a nation we work together to build, sustain, and improve our capability to prepare for, protect against, respond to, recover from, and mitigate all hazards.