

The Disaster Center is dedicated to the idea that disaster mitigation is cost effective and individuals pursuing their own interest are the greatest potential force for disaster reduction.

Please consider making a small donation to the Disaster Center



When disaster mitigation is cost effective, we are on the road to bringing disasters to an end.





# **FEMA**

## **Daily Operations Briefing**

**Wednesday, September 24, 2014**

**8:30 a.m. EDT**



# Significant Activity: Sep 23 – 24



**Significant Events:** None

**Tropical Activity:**

- Atlantic – Tropical cyclone activity not expected during the next 48 hours
- Eastern Pacific – Disturbance 1
- Central Pacific – No tropical cyclones are expected through Thursday evening
- Western Pacific – Disturbance 1

**Wildfire Activity:** CA & OR Wildfires

**Significant Weather:**

- Heavy rain – Mid-Atlantic/Southeast & Texas coast
- Flash Flooding – Mid-Atlantic Coast
- Red Flag Warnings: NV, CA & OR; Elevated Fire Weather Areas: NV, CA & OR
- Space Weather: Past 24-hours: Minor; Next 24 hours: None

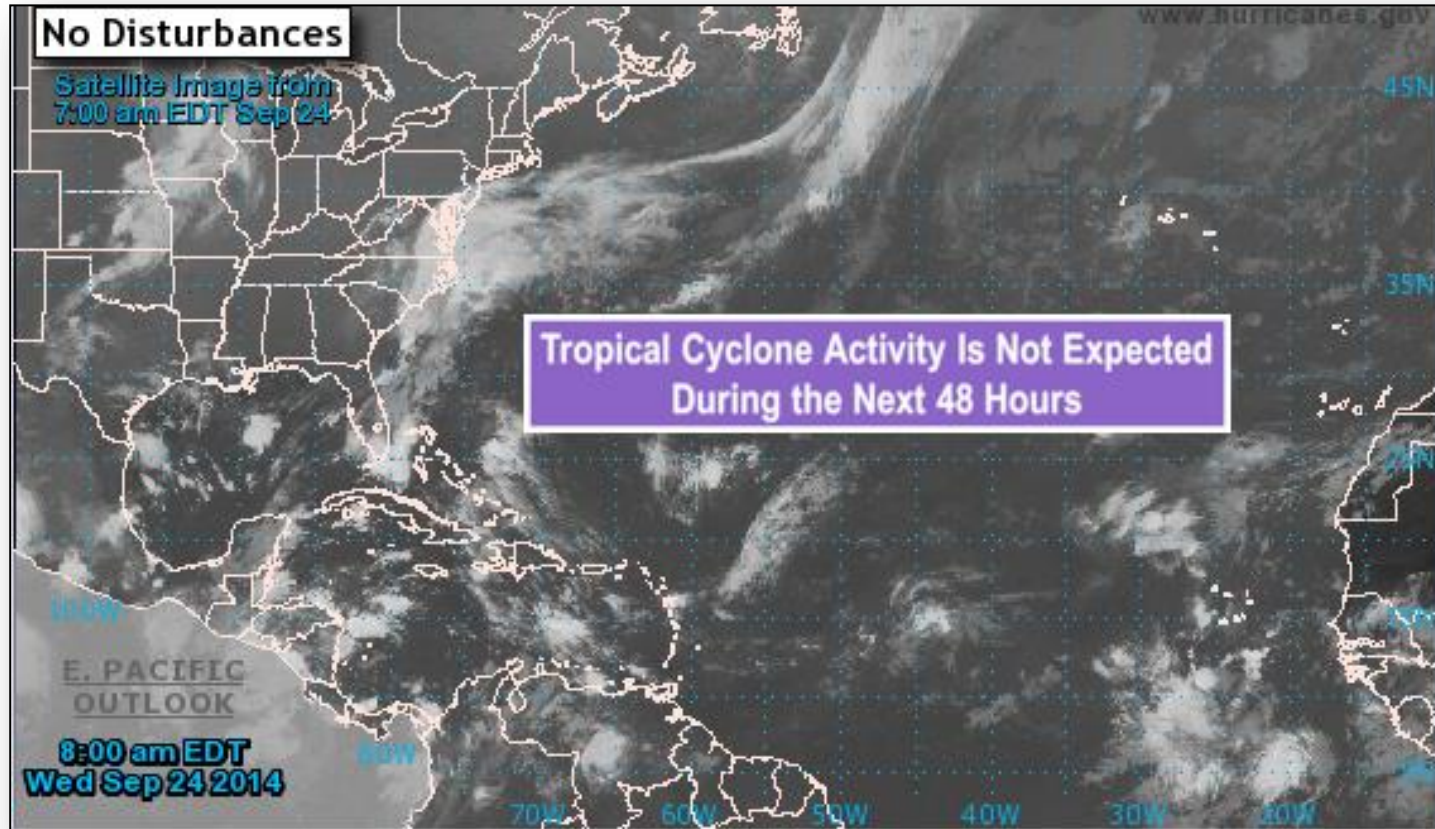
**FEMA Readiness:** No significant changes

**Declaration Activity:**

- Request for Major Disaster Declaration – Kentucky
- Request for Major Disaster Declaration from Vermont was denied



# 2-Day Tropical Outlook – Atlantic

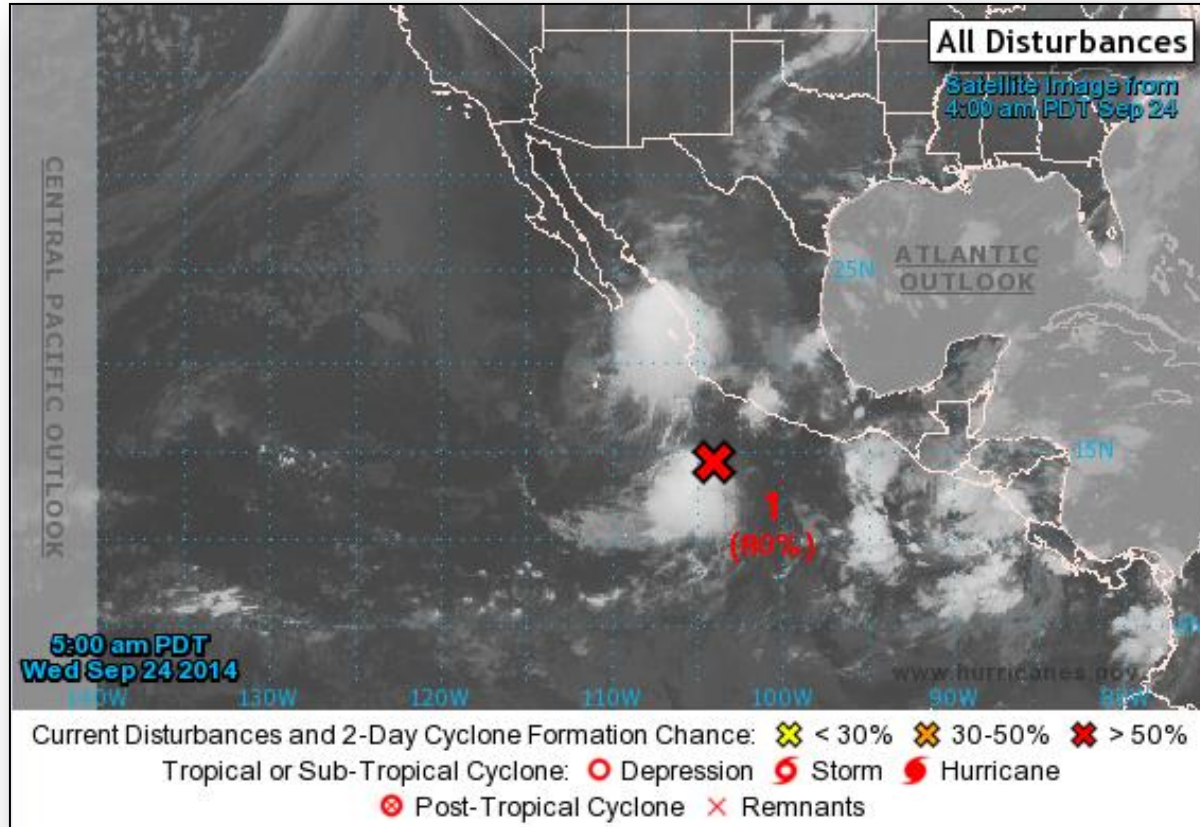




# 2-Day Tropical Outlook – Eastern Pacific

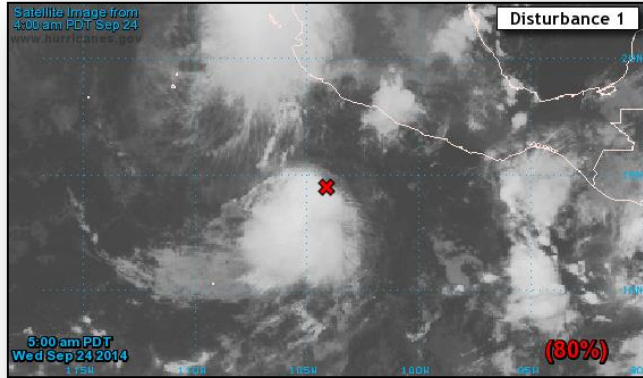


FEMA





# Eastern Pacific – Disturbance 1

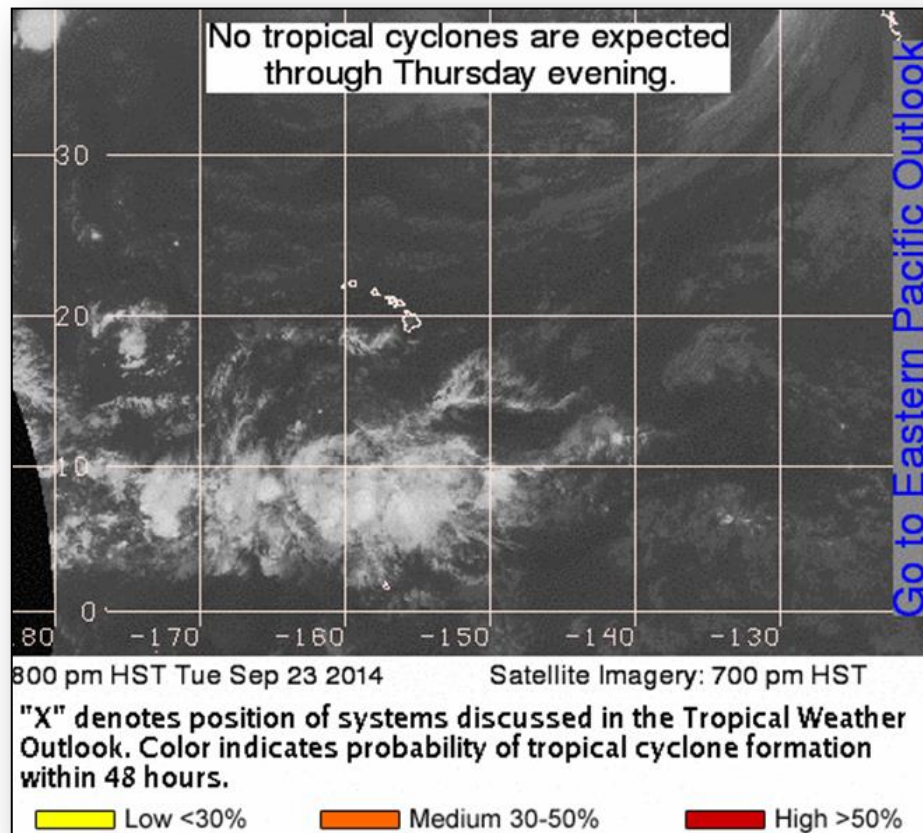


## **Disturbance 1 (as of 8:00 a.m. EDT)**

- Showers and thunderstorms are currently associated with a low pressure area located several hundred miles S of Manzanillo, Mexico
- Moving WNW at around 10 mph
- Only a slight increase in organization would lead to the formation of a tropical depression
- Formation chance:
  - Next 48-hours: High (80%)
  - Next 5 days: High (90%)

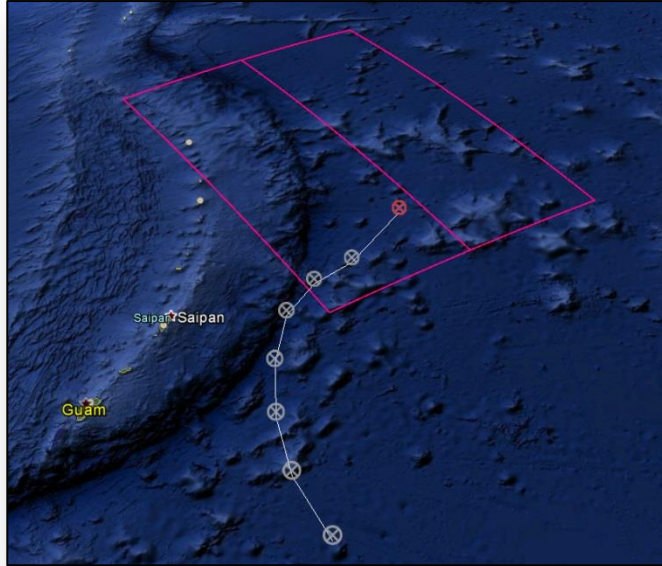


# 2-Day Tropical Outlook – Central Pacific





# Tropical Outlook – Western Pacific



## **Disturbance 1 (as of 2:00 a.m. EDT)**

- Located approximately 437 miles ENE of Guam
- Expected to gradually become better organized
- Maximum sustained winds 20 – 26 mph
- Forecast to pass through the far Northern Mariana Islands on Wednesday night or Thursday
- Locally heavy rainfall expected; amounts of 2 to 4 inches are possible



# Wildfire Summary



Fire Name (County)	FMAG #	Acres Burned	% Contained Est. Containment date	Evacuations (Residents)	Structures Threatened	Structures Destroyed	Fatalities / Injuries
California (1)							
King Fire (El Dorado County)	FEMA-5081-FM-CA	87,574 (+2,000)	35% (+17%)	Mandatory	21,000 (12,000 homes)	56 (12 homes)	0/4
Oregon (1)							
36 Pit Fire <b>(FINAL)</b> (Clackamas County)	FEMA-5080-FM-OR	5,508 (+84)	55%	Lifted	0	0	0/3



# Disaster Requests & Declarations



Declaration Requests in Process		Requests APPROVED (since last report)	Requests DENIED (since last report)
2	Date Requested	0	1
VT – DR Severe Storms and Flooding	September 5, 2014		Denied September 23, 2014
MI – DR Severe Storms and Flooding	September 17, 2014		
KY – DR Severe Storms, Flooding, Landslides, and Mudslides	September 22, 2014		



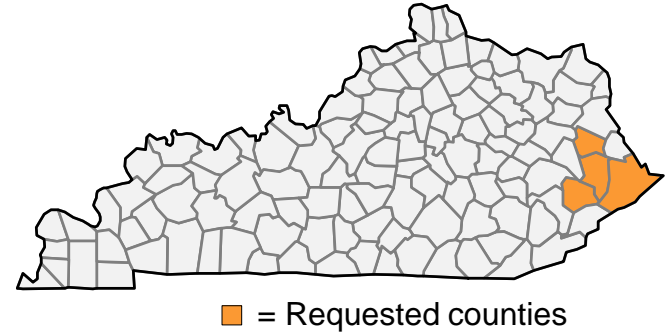
# Major Disaster Declaration Request – Kentucky



## **September 22, 2014**

- Governor requested a Major Disaster Declaration
- As a result of the severe storms, flooding, landslides, and mudslides during the period of August 18 – 23, 2014
- Requests:
  - Public Assistance for 4 counties (Floyd, Johnson, Knoll, and Pike)
  - Disaster Unemployment Assistance, Disaster Legal Assistance and Individuals and Households Program (IHP) for Floyd County
  - Hazard Mitigation statewide

## **Commonwealth of Kentucky**

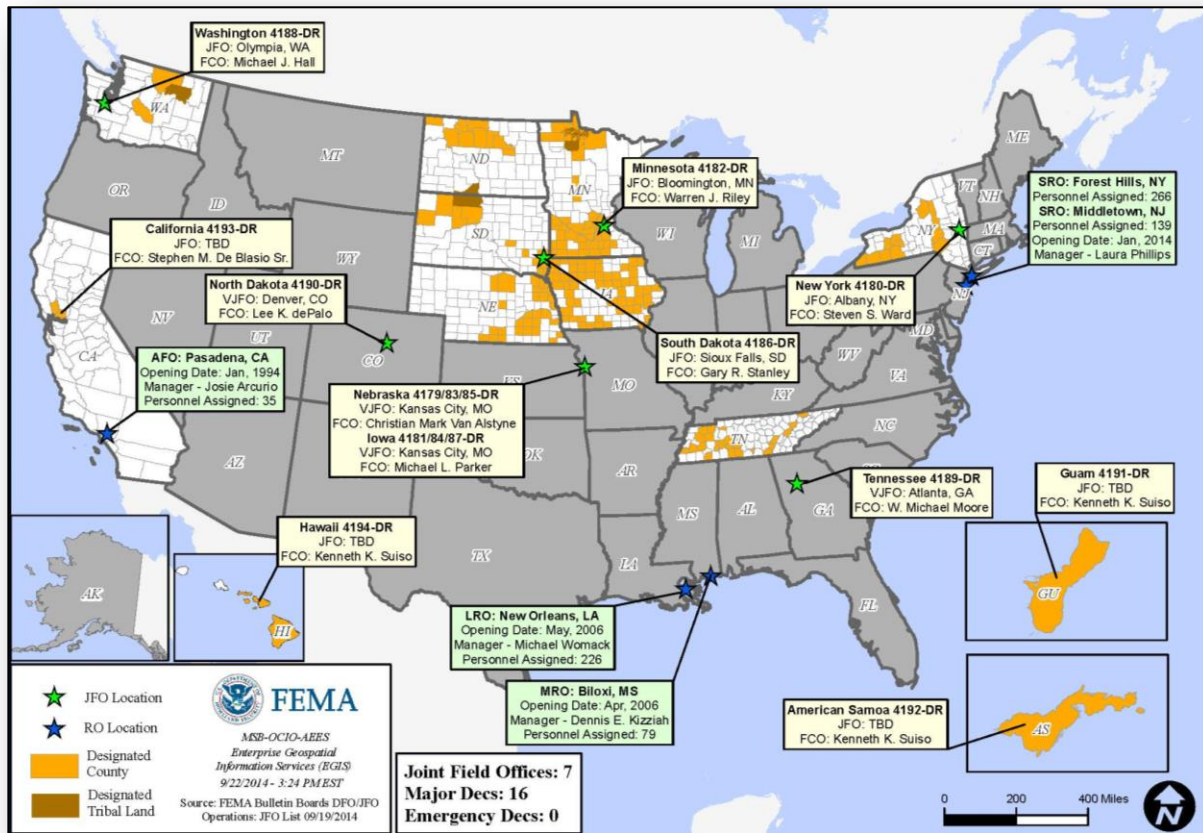




# Open Field Offices as of September 24



FEMA





# Joint Preliminary Damage Assessments



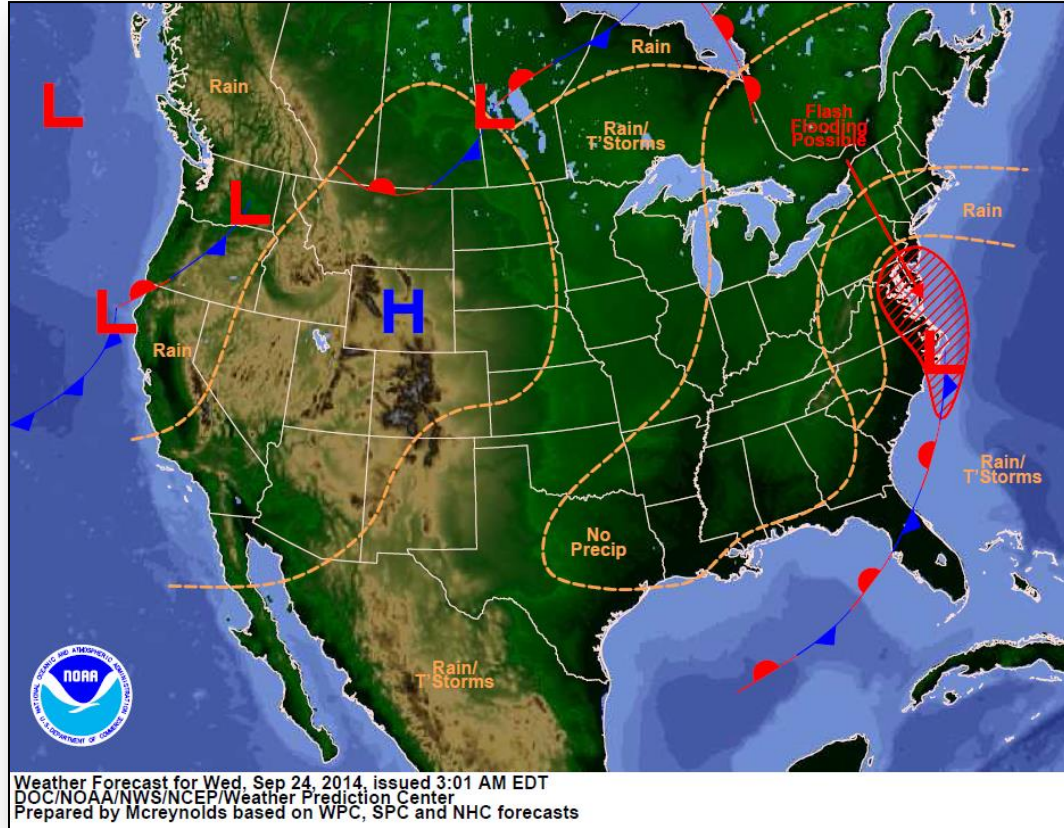
Region	State / Location	Event	IA/PA	Number of Counties		Start – End
				Requested	Complete	
II	NY	Heavy Rainfall & Flooding August 12 – 13, 2014	PA	1	1	9/18 – 9/20
VII	MO	Severe Storms September 9 – 10, 2014	PA	16	0	TBD – TBD
VIII	MT	Severe Storms & Flooding August 21 – 28, 2014	PA	5	1	9/22 – 9/26



# National Weather Forecast

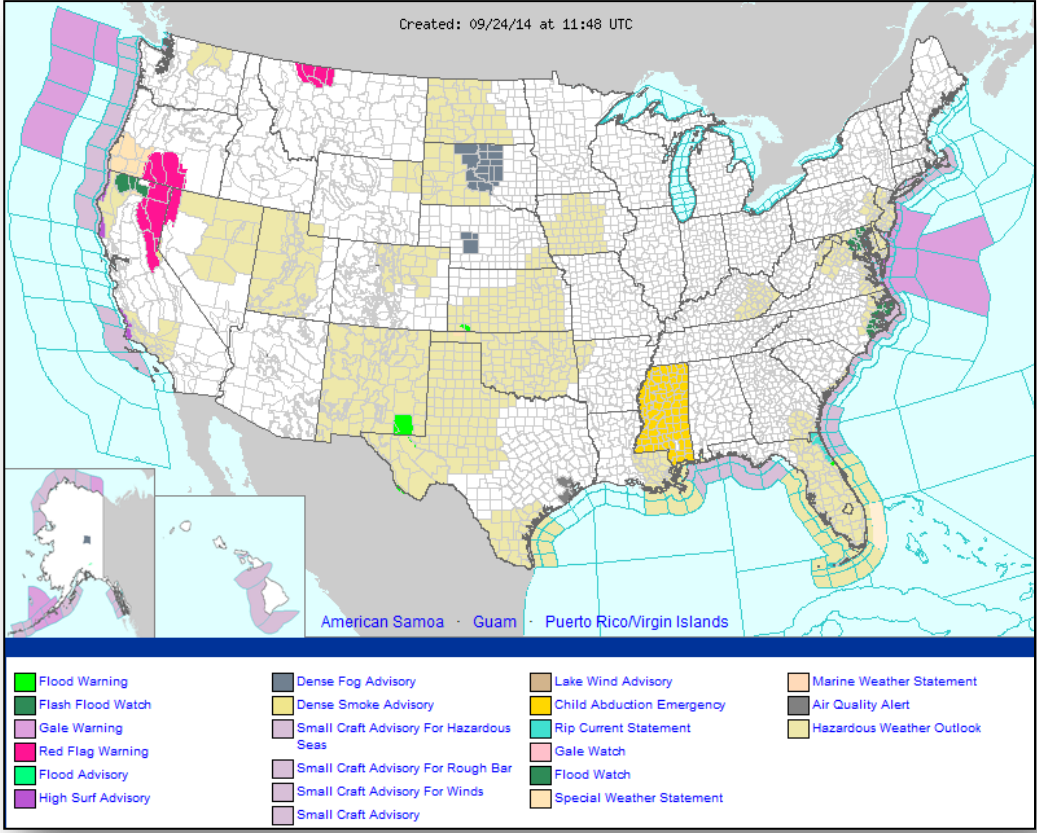


FEMA





# Active Watches/Warnings

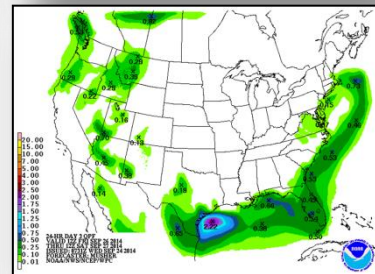
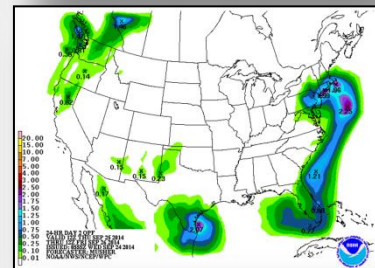
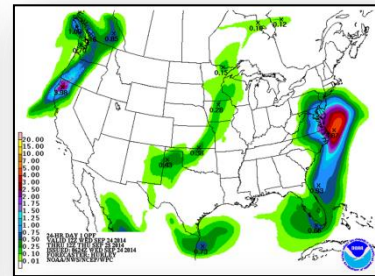
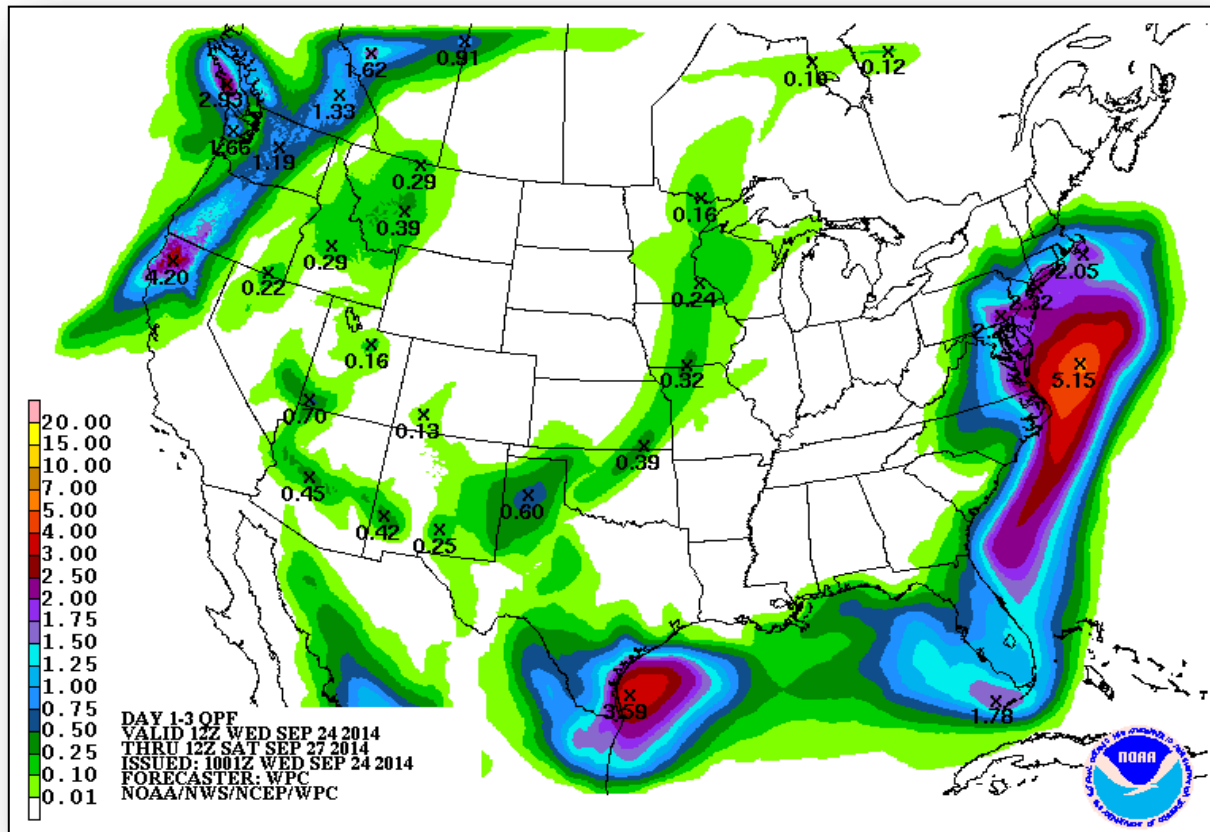




# Precipitation Forecast – 3 Day



FEMA



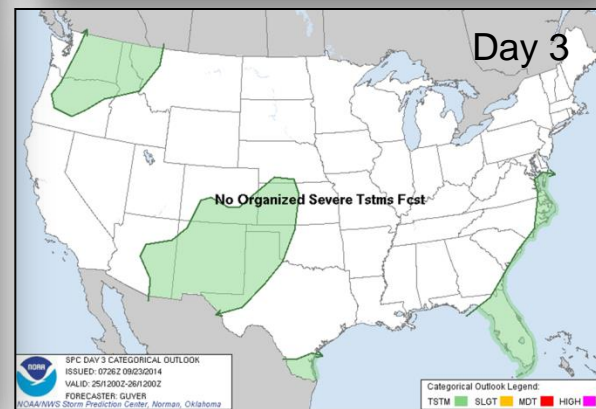
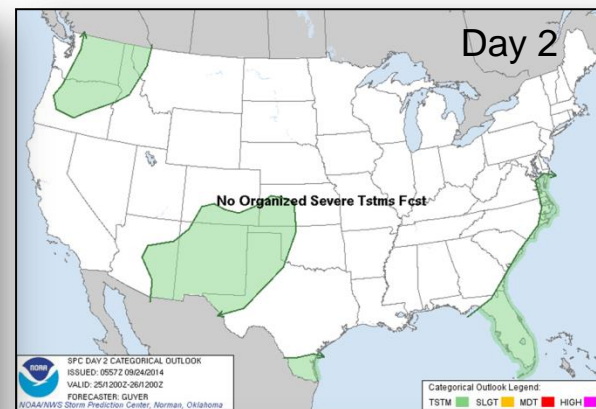
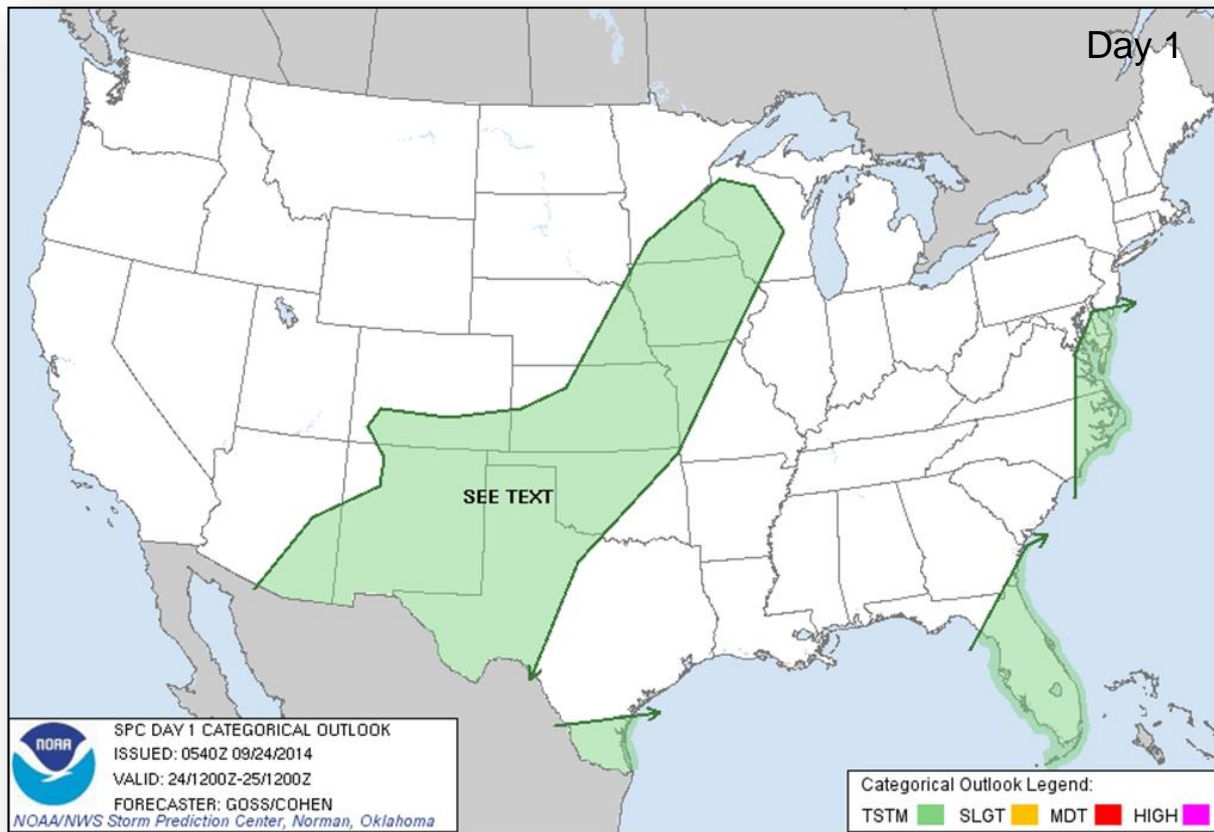


# River Forecast





# Convective Outlook, Days 1 – 3

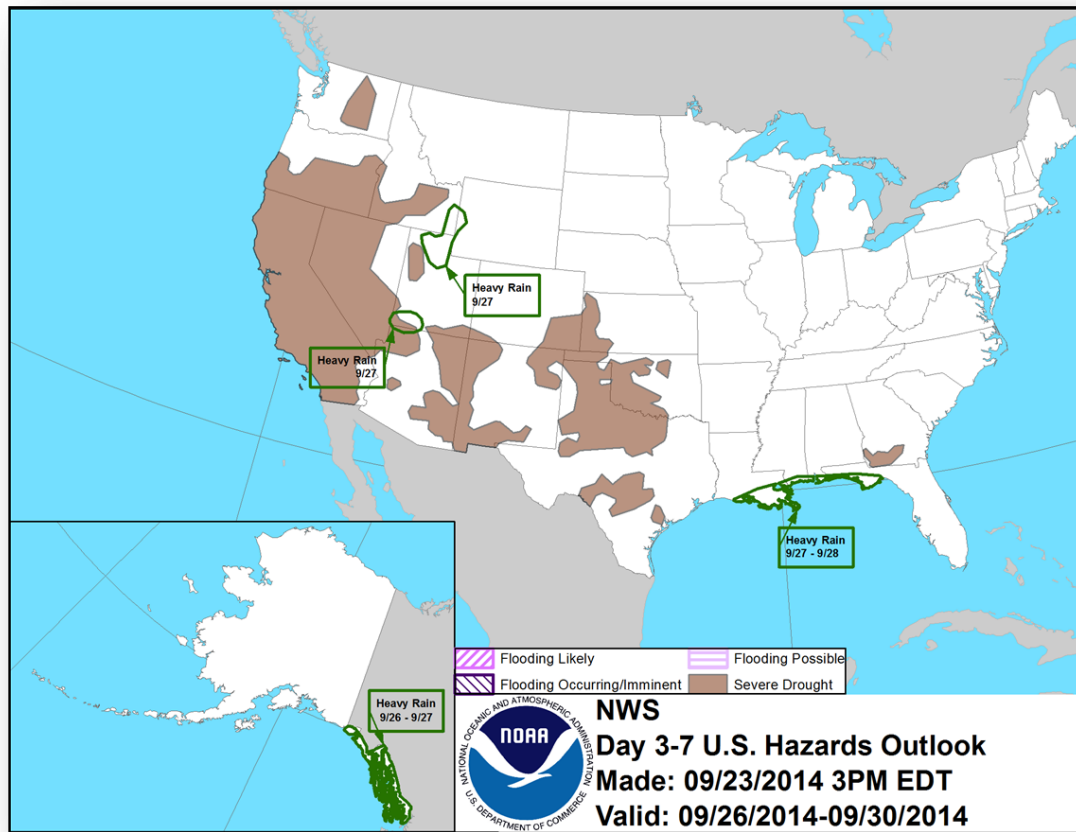




# Hazard Outlook: September 26 – 30



FEMA





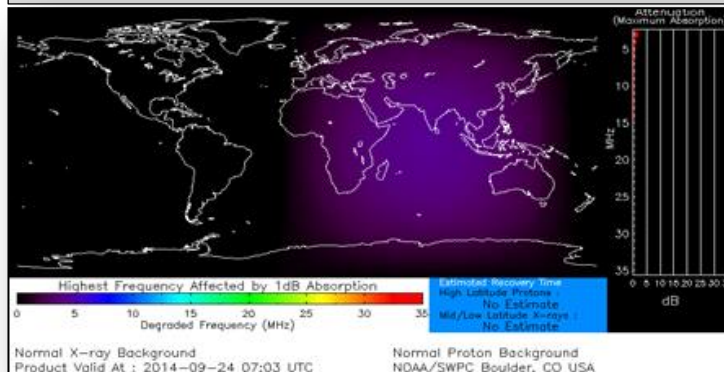
# Space Weather



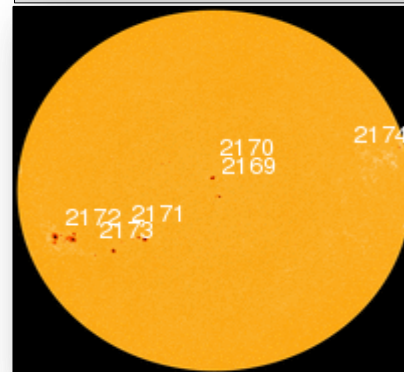
FEMA

NOAA Scales Activity (Range: 1/minor to 5/extreme)	Past 24 Hours	Current	Next 24 Hours
Space Weather Activity:	Minor	None	Minor
• Geomagnetic Storms	None	None	G1
• Solar Radiation Storms	None	None	None
• Radio Blackouts	R1	None	None

## HF Communication Impact



## Sunspot Activity





# Incident Support Base Readiness as of September 24, 2014



Name / Location	Overall Status	Primary Personnel Available	Personnel in Training / ODT	Unavailable / PANA	Deployed or Assigned	Comments / Deployment Details No ISB teams deployed as a whole. Individuals utilized on various deployments.
Alpha Team	88%	23	0	1	5	GSUL deployed
Bravo Team	88%	23	0	2	6	GSUL & ORMG are deployed
Charlie Team	96%	25	0	1	6	FSUL, GSUL, & APMG, are deployed
Delta Team	92%	24	0	1	6	GSUL & APMG are deployed
Echo Team	85%	22	0	4	3	FSUL & ORDL are deployed, RDMG not available
<b>Team Totals</b>	<b>90%</b>	<b>117</b>	<b>0</b>	<b>9</b>	<b>26</b>	

**Personnel Key:**  ≥ 80% available  70% -79% available  < 70% available

Name / Location	Overall Status	Equipment Available*	Non-Mission Capable equipment	Service /Repair	Deployed or Assigned	Comments / Deployment Details
Moffett – Cache #1	100%	14	0	0	0	
Cumberland – Cache #2	100%	14	0	0	0	
Selma – Cache #3	100%	16	0	0	0	
Selma – Cache # 4	100%	15	0	0	0	
Ft. Worth – Cache #5	100%	14	0	0	0	
Ft. Worth – Cache #6	100%	14	0	0	0	

**Cache Key:**  ≥ 90% available  70% -89% available  < 70% available

\***Equipment Availability:** functional equip ready to deploy within 24 hrs.



# FEMA Readiness – Deployable Teams/Assets



Deployable Teams/Assets									
Resource	Status	Total	Available		Partially Available	Not Available	Detailed Deployed Activated	Comments	Rating Criterion
FCO		40	18	45%	0	2	20		OFDC Readiness: FCO   Green   Yellow   Red Type 1   3+   2   1 Type 2   4+   3   2 Type 3   4   3   2
FDRC		10	5	50%	0	0	5		FDRC   3   2   1
US&R		28	27	97%	1	1	0	<ul style="list-style-type: none"><li>NM-TF1 (Red for personnel shortages)</li><li>CA-TF1 (Yellow for logistics &amp; management)</li></ul>	<ul style="list-style-type: none"><li>Green = Available/FMC</li><li>Yellow = Available/PMC</li><li>Red   = Out-of-Service</li><li>Blue   = Assigned/Deployed</li></ul>
National IMAT		3	3	100%	0	0	0		<ul style="list-style-type: none"><li>Green: 3 avail</li><li>Yellow: 1-2 avail</li><li>Red: 0 avail (<i>Individual N-IMAT red if 50% of Section Chiefs and/or Team Leader is unavailable for deployment.</i>)</li></ul>
Regional IMAT		13	4	31%	4	3	2	<u>Partially Mission Capable (PMC):</u> <ul style="list-style-type: none"><li>Region II, III, IV, VI</li></ul> <u>Not Mission Capable (NMC):</u> <ul style="list-style-type: none"><li>Region V, VII, IX (Team 1)</li></ul> <u>Deployed</u> <ul style="list-style-type: none"><li>Region X to WA, Region IX (Team 2) to CA</li></ul>	<ul style="list-style-type: none"><li>Green: 7 or more avail</li><li>Yellow: 4 - 6 teams available</li><li>Red: &gt; 8 teams deployed/unavailable</li></ul> <p><i>R-IMAT also red if TL Ops/Log Chief is unavailable and has no qualified replacement.</i></p>
MCOV		60	56	94%	0	4	0		<ul style="list-style-type: none"><li>Green = 80 – 100% avail</li><li>Yellow = 60 – 79% avail</li><li>Red = 59% or below avail</li><li>Readiness remains 95%</li></ul>



# FEMA Readiness – National/Regional Teams



National/Regional Teams									
Resource	Status	Total	Available		Partially Available	Not Available	Deployed/ Activated	Comments	Rating Criterion
NWC		5	5	100%	0	0	24/7		• Green = FMC • Yellow = PMC • Red = NMC
NRCC		2	344	89%	0	44	Not Activated		
HLT		1	N/A	N/A	0	1	Activated		
DEST							Not Activated		
RRCCs		10	9	90%	0	0	1	Region II: RRCC Level III (with ESFs & IMAT on alert); UN General Assembly	
RWCs/MOCs		10	10	100%	0	0	24/7		





# FEMA

**FEMA's mission is to support our citizens and first responders to ensure that as a nation we work together to build, sustain, and improve our capability to prepare for, protect against, respond to, recover from, and mitigate all hazards.**