

The Disaster Center is dedicated to the idea that disaster mitigation is cost effective and individuals pursuing their own interest are the greatest potential force for disaster reduction.

Please consider making a small donation to the Disaster Center



When disaster mitigation is cost effective, we are on the road to bringing disasters to an end.



FEMA

Daily Operations Briefing

Saturday, September 26, 2015

8:30 a.m. EDT

Significant Activity: Sep 25-26



Significant Events: Papal Visit, September 23-27

Tropical Activity:

- Atlantic: Tropical: Tropical Depression Ida; Disturbance 1 – Low (10%); Disturbance 2 – Low (10%)
- Eastern Pacific: Disturbance 1 – High (90%); Disturbance 2 – Low (30%)
- Central Pacific: Tropical Storm Niala
- Western Pacific: No activity affecting U.S. interests

Significant Weather:

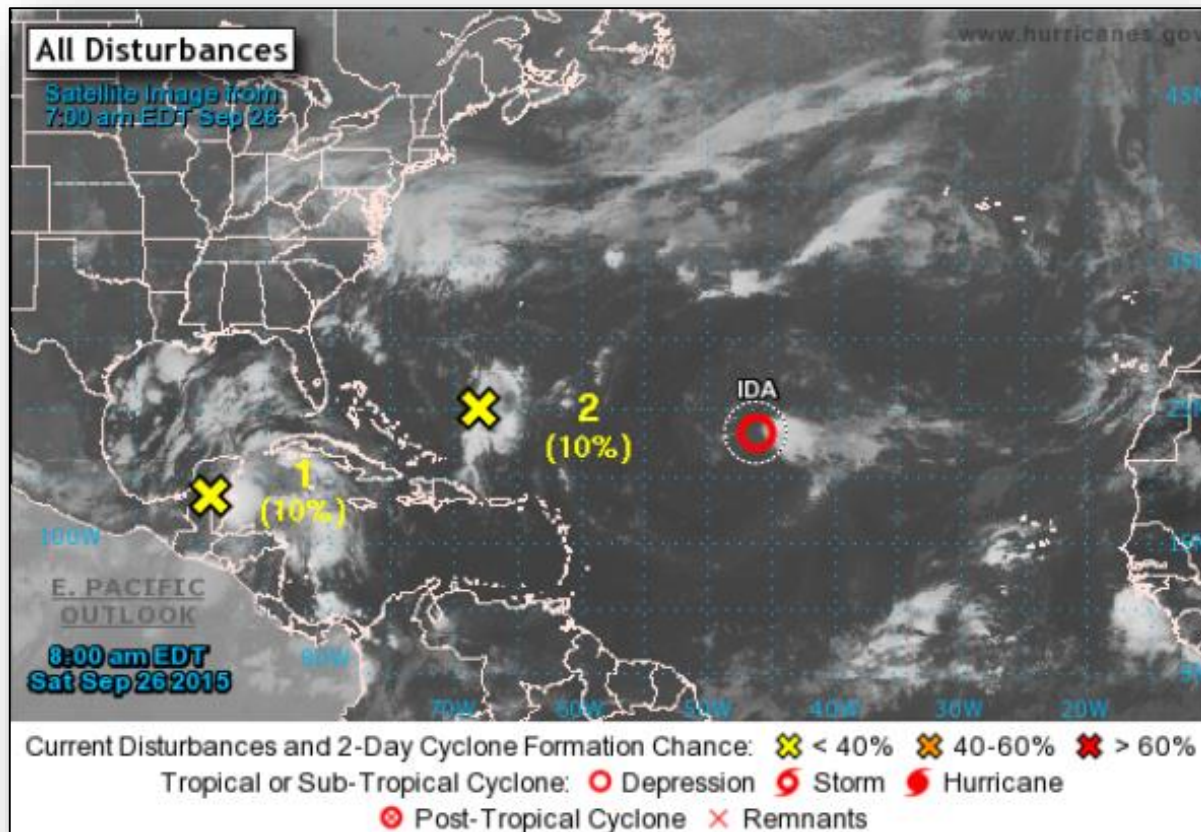
- Showers and thunderstorms – Southeast, Gulf Coast and Southern/Central Plains
- Flash flooding possible – Mid-Atlantic
- Above normal temperatures – Great Basin, Northern/Central Rockies & High Plains
- Red Flag Warnings – WY
- Critical/Elevated Fire Weather areas – none
- Space weather: Past 24 hours – no space weather storms occurred; none expected next 24 hours

Declaration Activity: None

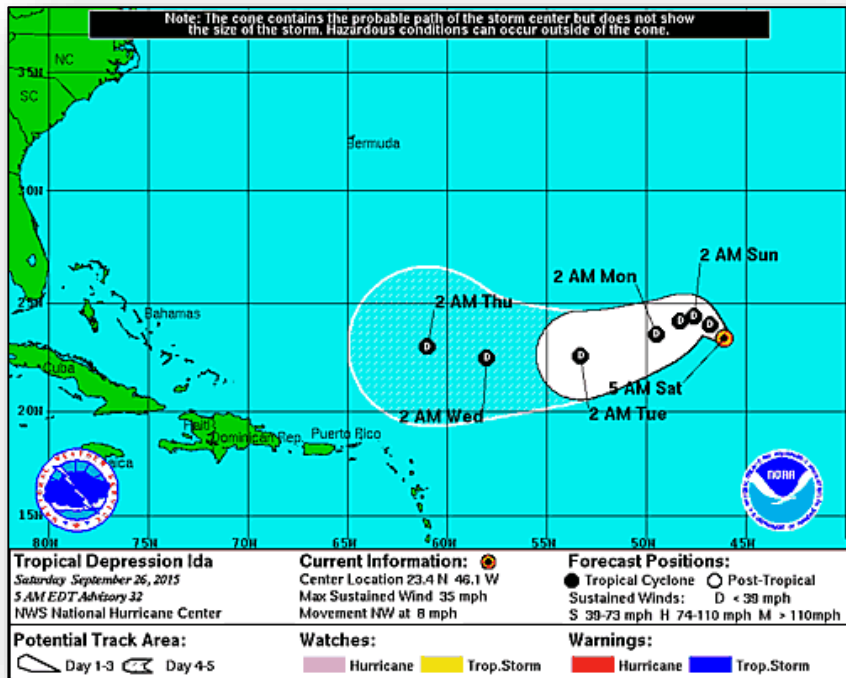
2 Day Tropical Outlook - Atlantic



FEMA



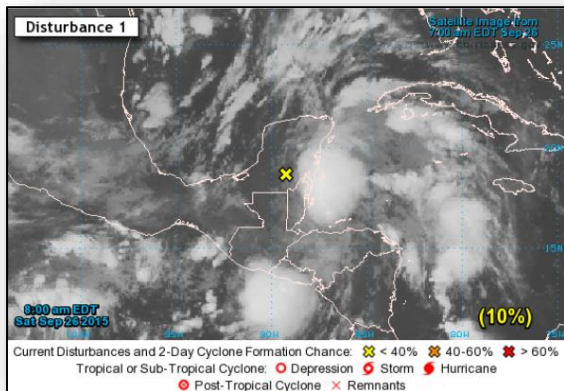
Atlantic – Tropical Depression Ida



Tropical Depression Ida (Advisory #32, as of 5:00 a.m. EDT)

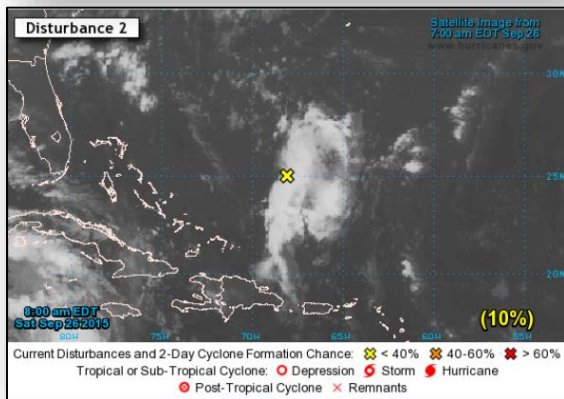
- Located 1,155 miles ENE of Northern Leeward Islands
- Moving NW at 8 mph
- Maximum sustained winds 35 mph
- Little change in strength is forecast during next 48 hours
- There are no coastal watches or warnings in effect

2-Day Tropical Outlook – Atlantic



Disturbance #1 (As of 8:00 a.m. EDT)

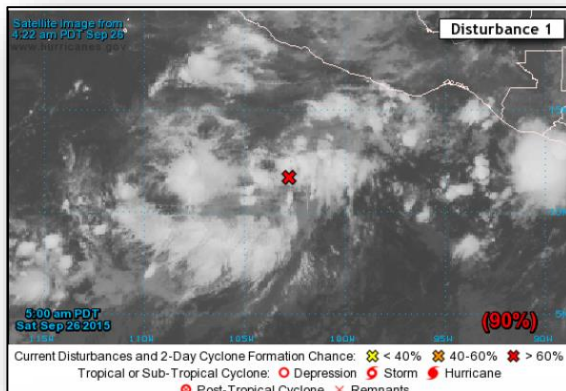
- Disorganized cloudiness and thunderstorms
- Located over the northwestern Caribbean Sea, Yucatan Peninsula and portions of Central America
- Expected to reach the southern Gulf of Mexico later this weekend
- Likely to produce locally heavy rain over the northern Gulf Coast and southeast U.S. early next week
- Formation chance through 48 hours: Low (near 10%)
- Formation chance through 5 days: Low (20%)



Disturbance #2 (As of 8:00 a.m. EDT)

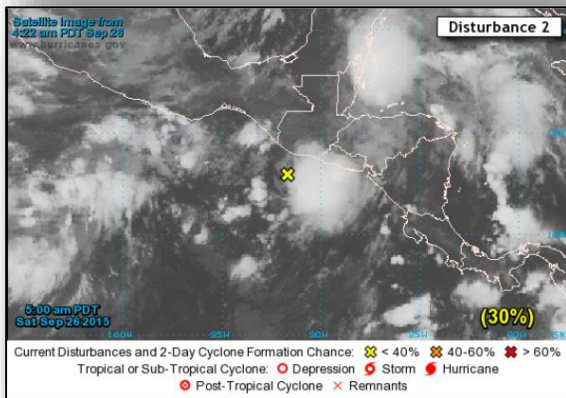
- Disorganized showers and thunderstorms
- Located several hundred miles SSW of Bermuda
- Development, if any, of this system is expected to be slow to occur while it moves toward the north or north-northwest
- Upper level winds forecast to become unfavorable for development after this weekend
- Formation chance through 48 hours: Low (near 10%)
- Formation chance through 5 days: Low (10%)

2 – Day Tropical Outlook – Eastern Pacific



Disturbance 1 *(as of 8:00 a.m. EDT)*

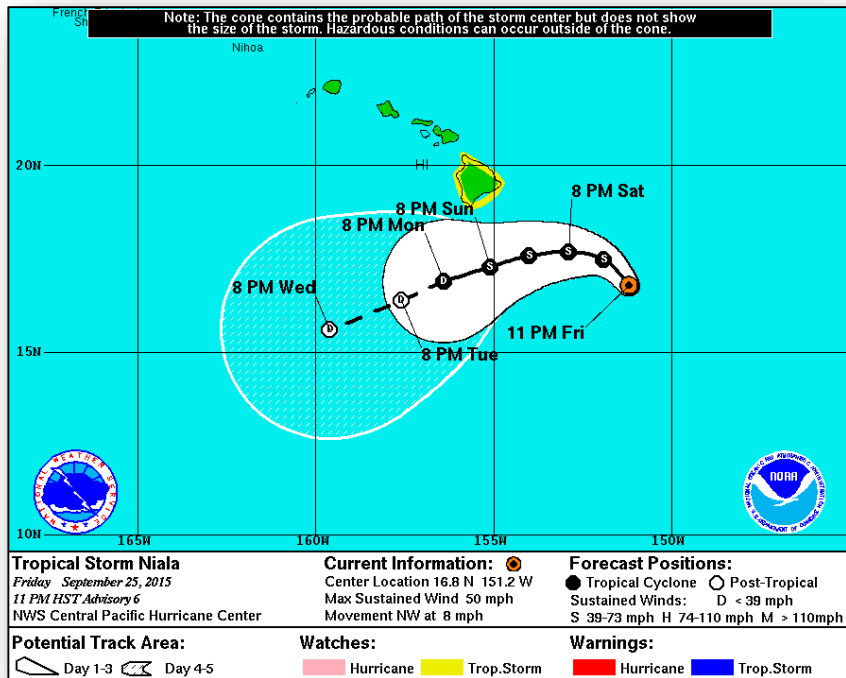
- Located 400 miles SSW of Acapulco, Mexico
- Moving N at 5 mph
- Tropical depression is expected to form next day or two
- Formation chance through 48 hours: High (90%)
- Formation chance through 5 days: High (90%)



Disturbance 2 *(as of 8:00 a.m. EDT)*

- Located 200 miles off the coast of Guatemala and El Salvador
- Expected to move little or drift westward during the next couple days
- Development appears unlikely due to its proximity to land and unfavorable upper-level winds
- Regardless of tropical cyclone development, this system could produce heavy rains across portions of El Salvador and southern Guatemala during the next few days
- Formation chance through 48 hours: Low (30%)
- Formation chance through 5 days: Low (30%)

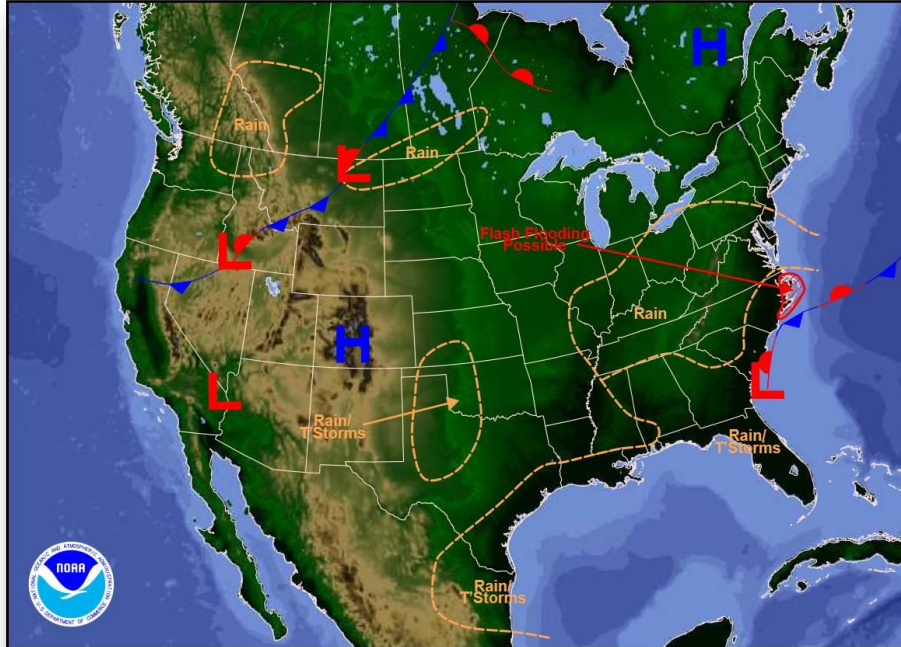
2 – Day Tropical Outlook – Central Pacific



Tropical Storm Niala : (Advisory #6A as of 8:00 a.m. EDT)

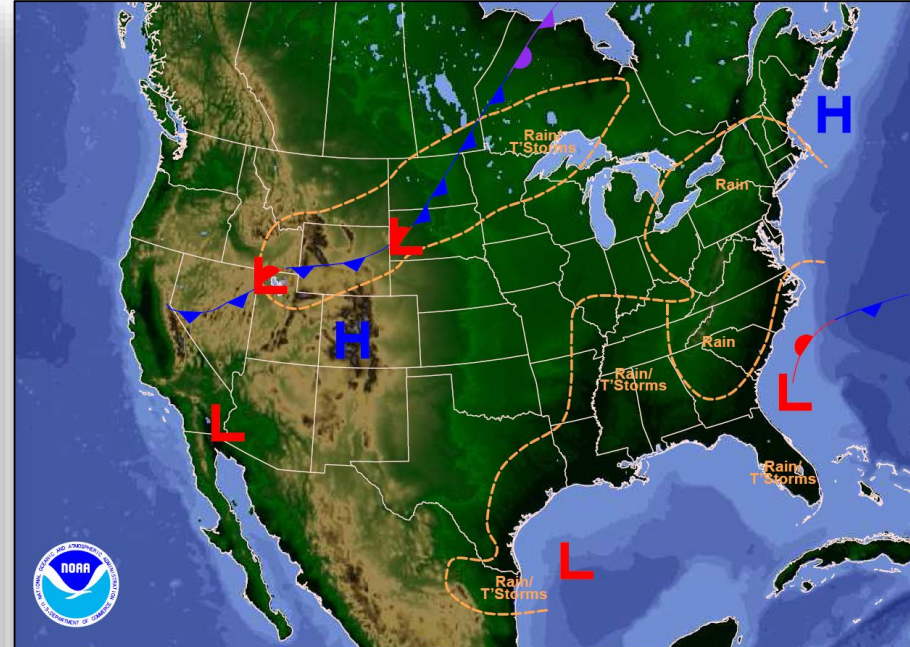
- Located 300 miles SE of Hilo, HI
- Moving NW at 8 mph; forecast to pass 100 to 150 miles S of the Big Island on Sunday
- Maximum sustained winds 55 mph
- Little change in strength is expected on Saturday followed by weakening on Sunday
- Tropical Storm-force winds extend outward 80 miles
- Rainfall: 6-12 in, locally up to 16 inches possible – Big Island
- Tropical Storm Watch is in effect for Hawaii County

National Weather Forecast



Weather Forecast for Sat, Sep 26, 2015, issued 4:16 AM EDT
DOC/NOAA/NWS/NCEP/Weather Prediction Center
Prepared by Fanning based on WPC, SPC and NHC forecasts

Today



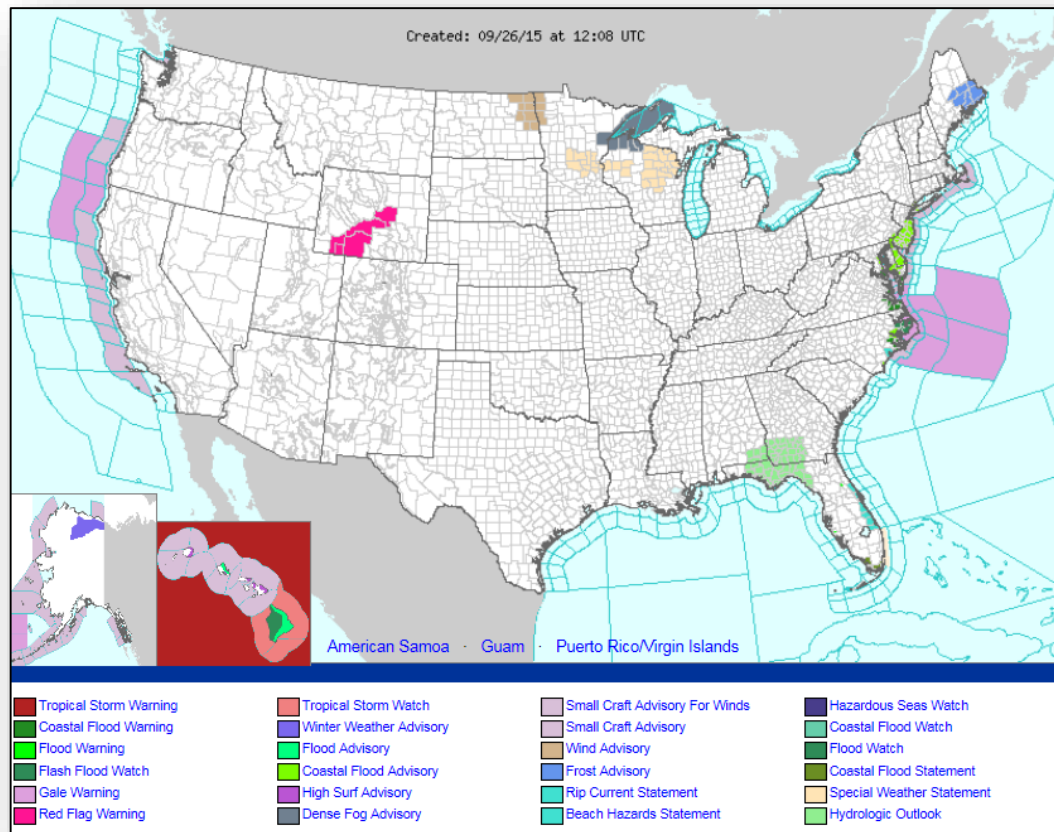
Weather Forecast for Sun, Sep 27, 2015, issued 4:19 AM EDT Sat, Sep 26, 2015
DOC/NOAA/NWS/NCEP/Weather Prediction Center
Prepared by Fanning based on WPC, SPC and NHC forecasts

Tomorrow

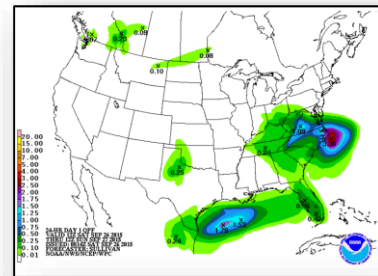
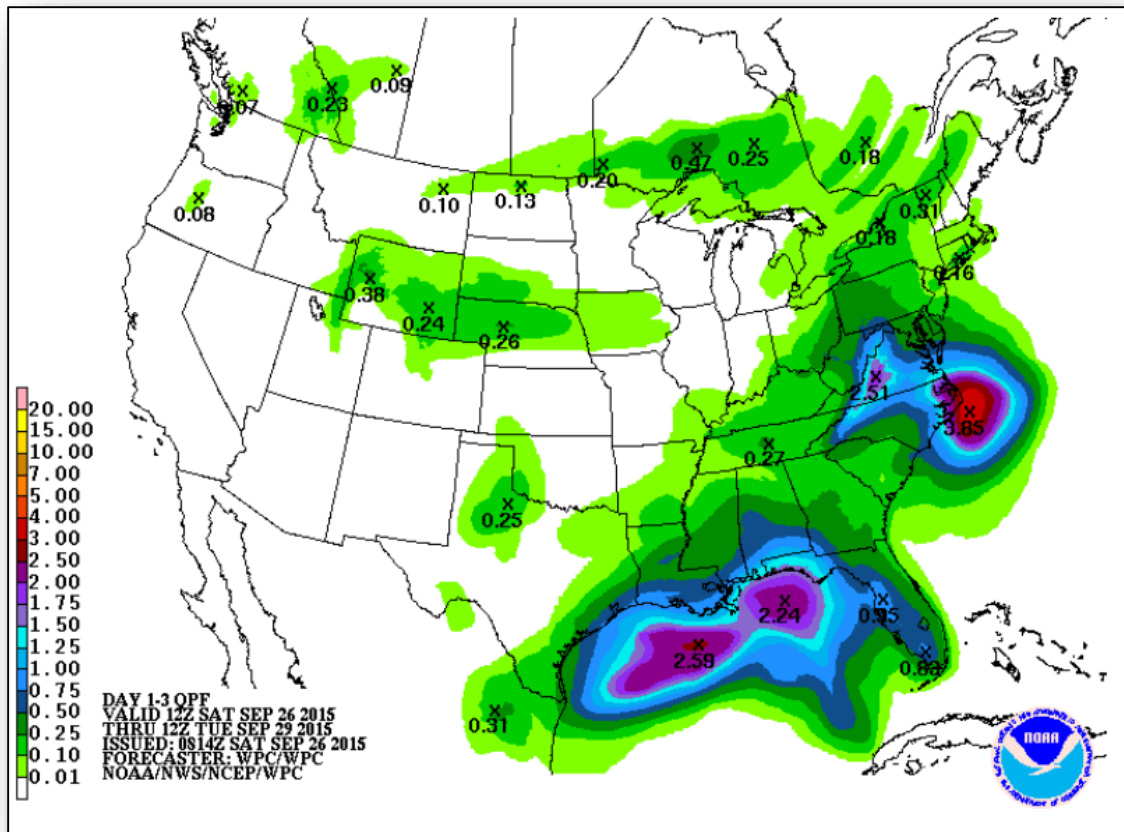
Active Watches/Warnings



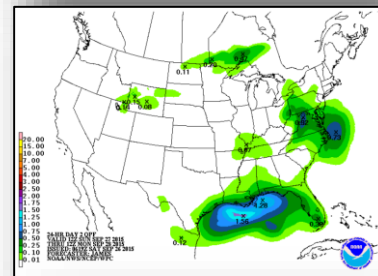
FEMA



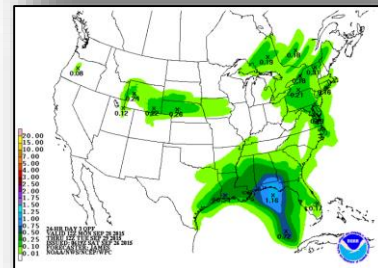
Precipitation Forecast, 1 – 3 Day



Day 1



Day 2

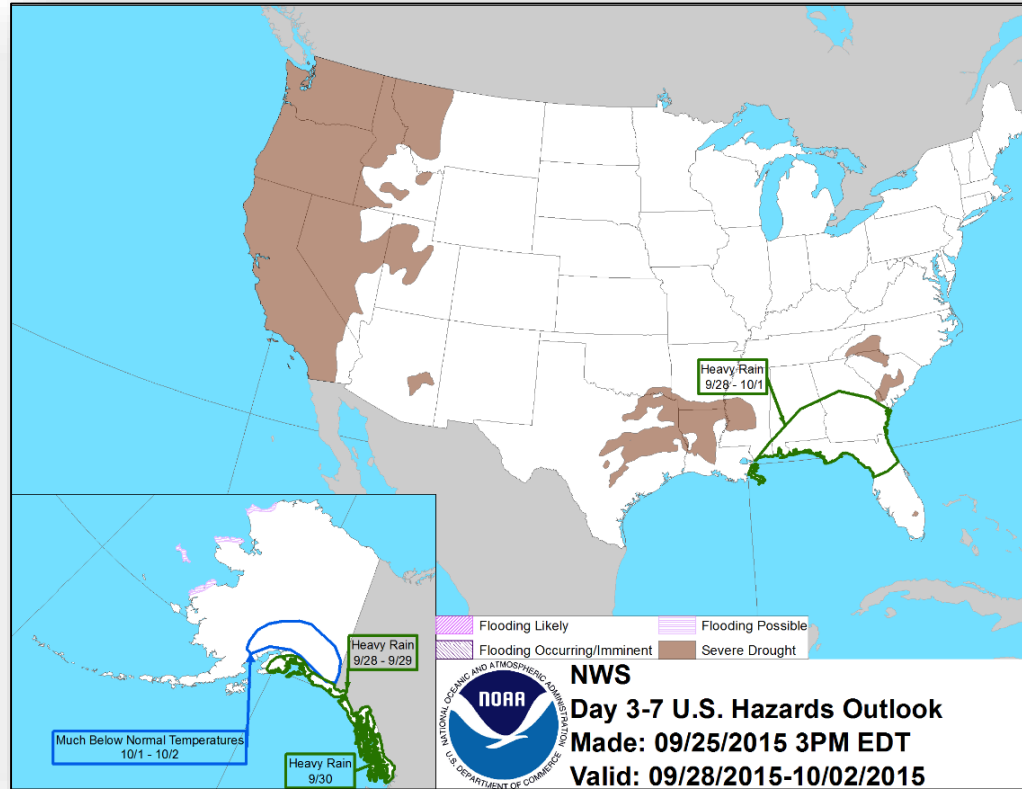


Day 3

Hazard Outlook, September 28 – October 2

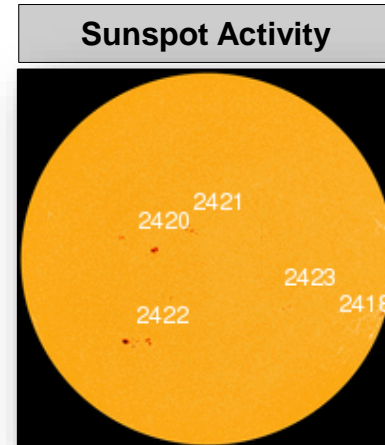
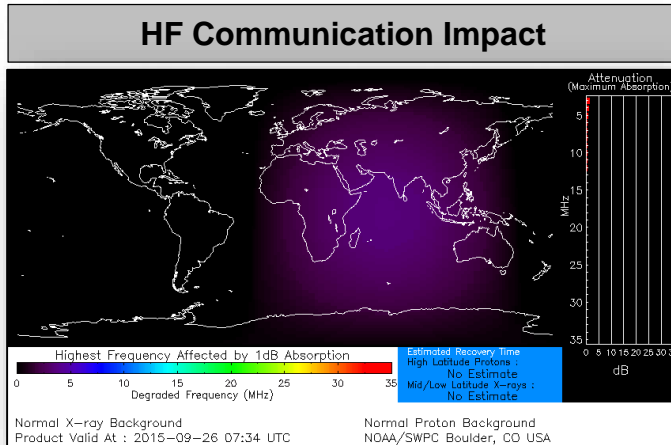


FEMA



Space Weather

	Past 24 Hours	Current	Next 24 Hours
Space Weather Activity:	None	None	None
• Geomagnetic Storms	None	None	None
• Solar Radiation Storms	None	None	None
• Radio Blackouts	None	None	None



Wildfire Summary

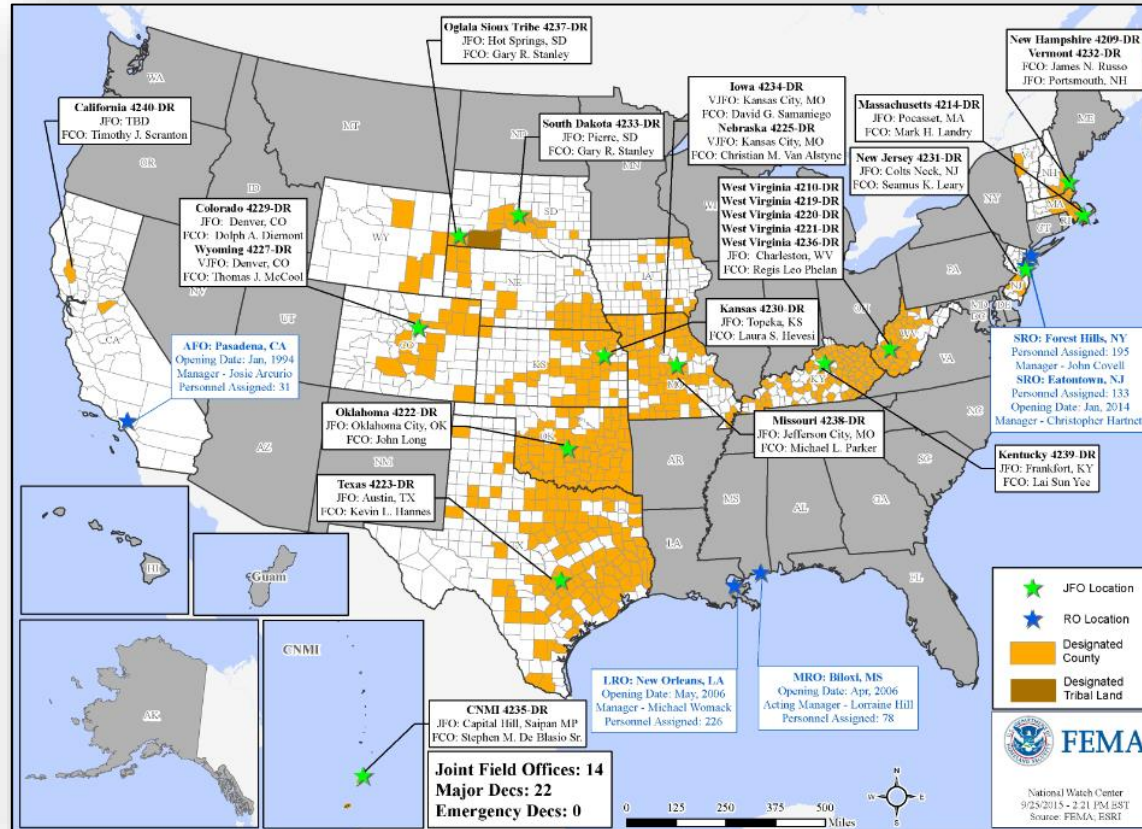


Fire Name (County)	FMAG #	Acres burned	% Contained	Evacuations (Residents)	Structures Threatened	Structures Damaged/ Destroyed	Fatalities/ Injuries
California							
Valley Fire (Lake, Napa, Sonoma Counties)	FEMA-5112-FM-CA	76,067	92% (+5)	8,837	2,964 (2,953 homes)	96 (37 homes) /1,910 (1,238 homes)	4/4
Response: Region IX: Enhanced Watch Region IX: IMAT-2 & 1 LNOs deployed to CA CA EOC: Full Activation (Dayshift only) Regional EOCs: Fully Activated				Shelters: ARC & Independent shelters: 6 open with 271 (+105) occupants (ARC Midnight Shelter Report 26 Sep)			

Open Field Offices as of September 26



FEMA



Joint Preliminary Damage Assessments



Region	State / Location	Event	IA/PA	Number of Counties		Start – End
				Requested	Complete	
IX	CA	Butte Fire September 9, 2015 & ongoing	IA	1	1	9/17 – 9/21
			PA	1	1	9/22 – 9/23
X	WA	Wildfires June 29, 2015 & ongoing	IA	5	5	9/14 – 9/18
			PA	5	0	9/21 – TBD
	Warm Springs Reservation (OR)	County Line 2 Fire August 12, 2015 & ongoing	PA	1	0	9/21 - TBD

FEMA Readiness – Deployable Teams /Assets



Deployable Teams/Assets									
Resource	Status	Total	FMC Available		Partially Available	Not Available	Detailed, Deployed, Activated	Comments	Rating Criterion
FCO		35	12	34%	0	1	22		OFDC Readiness: FCO Green Yellow Red Type 1 3+ 2 1 Type 2 4+ 3 2 Type 3 4 3 2 FDRC 3 2 1
FDRC		9	5	56%	0	0	4		
US&R		28	25	89%	1	2	0	NY-TF1 (Yellow) – Sep 10-30 for Papal Visit Support PA-TF1 (Red) - Sep 21-24 for In-State Exercise; (Yellow) Sep 29 – Oct 5 for Cache Reconstitution NM-TF1 (Red) – Personnel shortages	• Green = Available/FMC • Yellow = Available/PMC • Red = Out-of-Service • Blue = Assigned/Deployed
National IMAT		3	3	100%	0	0	0		• Green: 3 avail • Yellow: 1-2 avail • Red: 0 avail (<i>Individual N-IMAT red if 50% of Section Chiefs and/or Team Leader is unavailable for deployment.</i>)
Regional IMAT		13	6	46%	0	0	7	<u>Deployed:</u> RII Deployed to NY for Papal Visit and UNGA RIII Deployed to PA for Papal Visit RVI (Team 2) & RIV (Team 1) Deployed to LA (Exercise) but available for real world events RVII Deployed to MO RVIII (Team 1) Deployed to SD & CO RIX (Team 1) Deployed to Guam/CNMI RIX (Team 2) Deployed to CA for wildfires RX Deployed to WA to supporting PDAs for wildfires	• Green: 7 or more avail • Yellow: 4 - 6 teams available • Red: > 8 teams deployed/unavailable <i>R-IMAT also red if TL Ops/Log Chief is unavailable & has no qualified replacement</i>
MCOV		59	40	68%	0	9	10	4 MCOVs deployed to DR-4240-CA 6 MCOVs enroute to DR-4240-CA	• Green = 80 – 100% avail • Yellow = 60 – 79% avail • Red = 59% or below avail • Readiness remains 95%

FEMA Readiness – National/Regional Teams



National/Regional Teams									
Resource	Status	Total	FMC Available		Partially Available	Not Available	Status	Comments	Rating Criterion
NWC		5	5	100%	0	0	Activated	Enhanced Watch (days only) supporting UNGA & Papal Visit (NSSE)	<ul style="list-style-type: none"> • Green = FMC • Yellow = PMC • Red = NMC
NRCC		2	344	89%	0	44	Not Activated		
HLT		1	N/A	N/A	0	0	Activated		
DEST							Not Activated		
RRCCs		10	9	90%	0	0	Activated	Region III – Level II (Partial Activation) supporting Papal Visit	
RWCs/MOCs		10	10	100%	0	0	Activated	Region II – Enhanced Watch (24/7) supporting Papal Visit Region III – Enhanced Watch (24/7) supporting Papal Visit Region IX - Enhanced Watch (24/7) supporting CA Wildfires	



FEMA

FEMA's mission is to support our citizens and first responders to ensure that as a nation we work together to build, sustain, and improve our capability to prepare for, protect against, respond to, recover from, and mitigate all hazards.