

The Disaster Center is dedicated to the idea that disaster mitigation is cost effective and individuals pursuing their own interest are the greatest potential force for disaster reduction.

Please consider making a small donation to the Disaster Center



When disaster mitigation is cost effective, we are on the road to bringing disasters to an end.



FEMA

Daily Operations Briefing

Sunday, September 27, 2015

8:30 a.m. EDT

Significant Activity: Sep 26-27



Significant Events: Papal Visit, September 23-27

Tropical Activity:

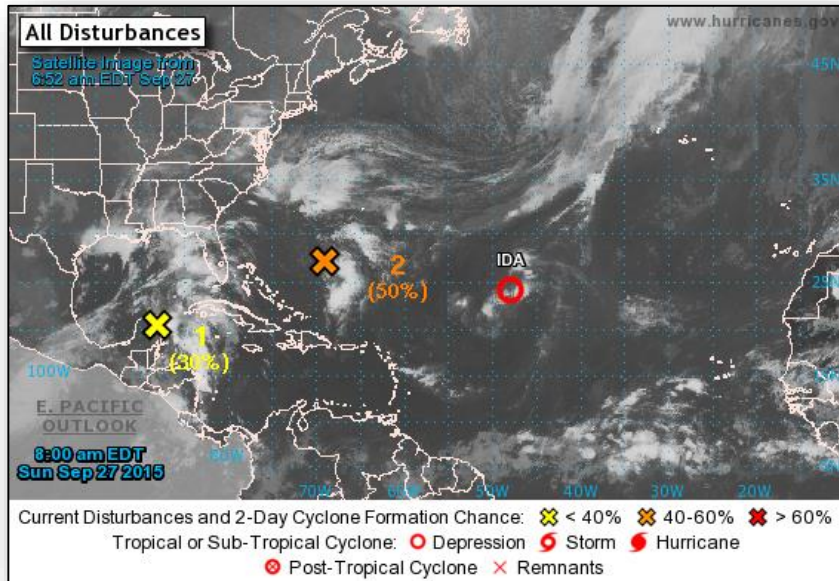
- Atlantic: Tropical: Tropical Depression Ida; Disturbance 1 – Low (30%); Disturbance 2 – Medium (50%)
- Eastern Pacific: Tropical Storm Marty; Disturbance 1 – Low (10%)
- Central Pacific: Tropical Storm Niala
- Western Pacific: No activity affecting U.S. interests

Significant Weather:

- Showers and thunderstorms – Southern Plains across the Lower Mississippi Valley into the Southeast
- Above normal temperatures – Great Basin, Central Rockies, and Upper Mississippi Valley
- Critical/Elevated Fire Weather areas – none
- Space weather: Past 24 hours – no space weather storms occurred; none expected next 24 hours

Declaration Activity: None

2 Day Tropical Outlook - Atlantic



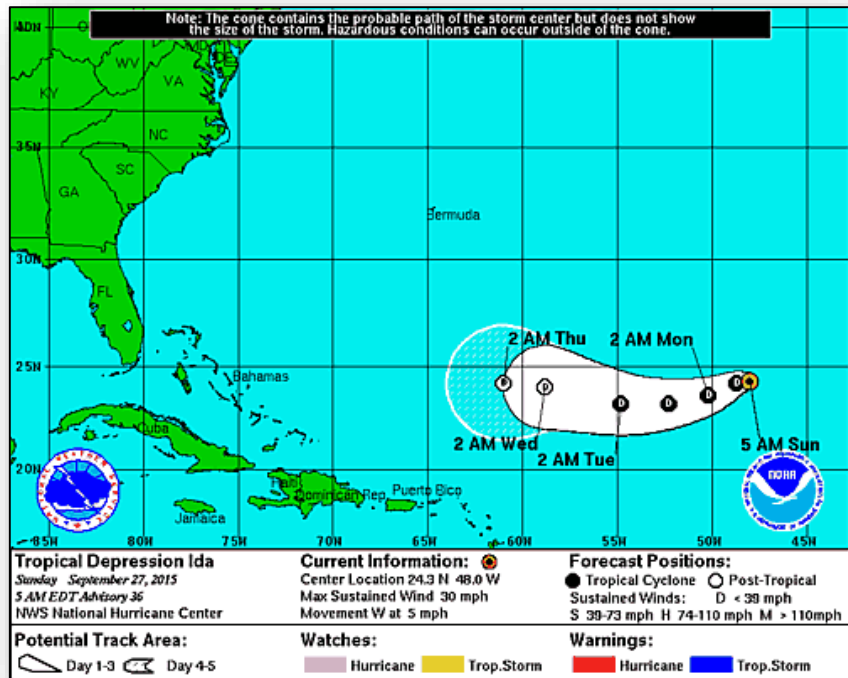
Disturbance #1 (As of 8:00 a.m. EDT)

- Located over the northeastern Yucatan Peninsula
- Producing a large area of disorganized cloudiness and showers extending from the northwestern Caribbean Sea northward over the eastern Gulf of Mexico
- Upper-level winds are expected to be only marginally conducive for development while this system moves northward toward the northern Gulf Coast
- Disturbance likely to produce locally heavy rainfall over portions of northern Gulf Coast
- Formation chance through 48 hours: Low (30%)
- Formation chance through 5 days: Low (30%)

Disturbance #2 (As of 8:00 a.m. EDT)

- Located 425 miles SSW of Bermuda
- Moving NNW or NW at 5-10 mph
- Some additional development of this system is possible and this system could become a tropical depression during the next day or so
- Formation chance through 48 hours: Medium (50%)
- Formation chance through 5 days: Medium (50%)

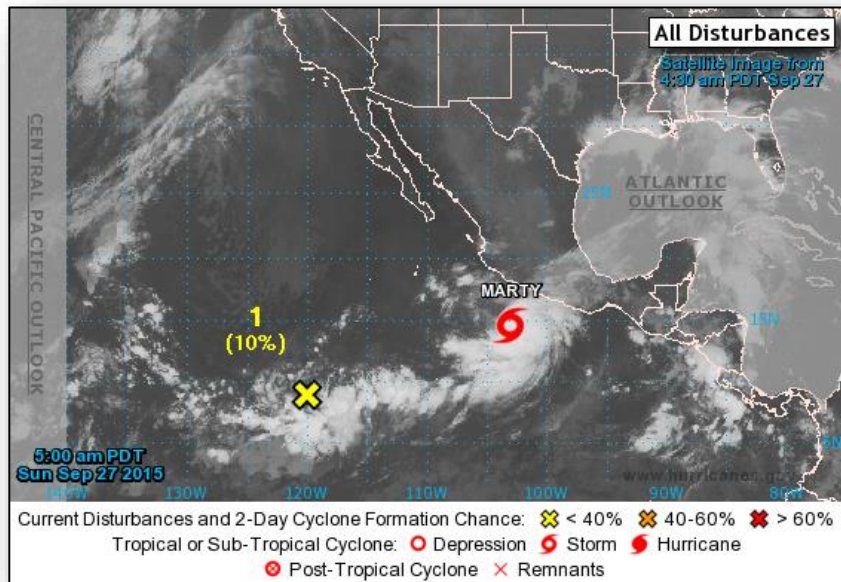
Atlantic – Tropical Depression Ida



Tropical Depression Ida (Advisory #36, as of 5:00 a.m. EDT)

- Located 1,060 miles ENE of Northern Leeward Islands
- Moving W at 5 mph
- Maximum sustained winds 30 mph
- Little change in strength is expected next 48 hours
- There are no coastal watches or warnings in effect

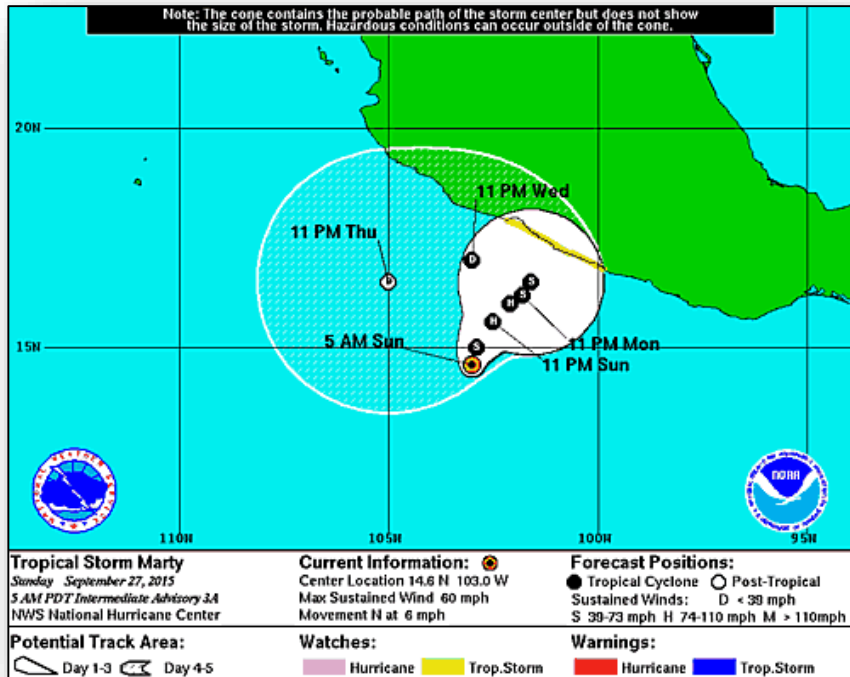
2 Day Tropical Outlook – Eastern Pacific



Disturbance #1 (As of 8:00 a.m. EDT)

- Broad area of low pressure is expected to form over the next couple of days from a surface trough located about 1,000 miles southwest of the southern tip of the Baja California peninsula
- Environmental conditions appear conducive for development of this system by the middle of the week while it moves slowly northward or northeastward
- Formation chance through 48 hours: Low (10%)
- Formation chance through 5 days: Medium (40%)

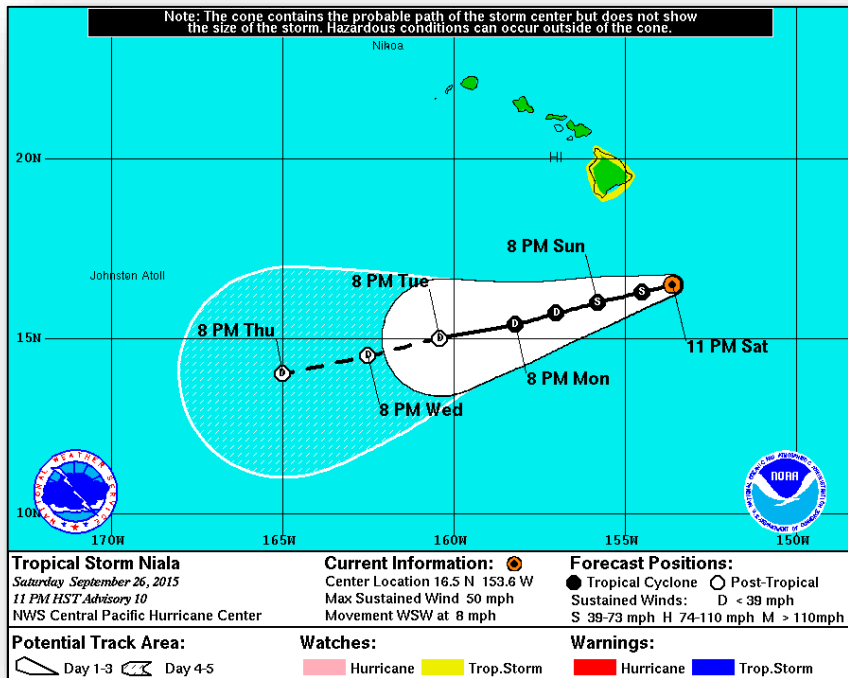
Eastern Pacific – Tropical Storm Marty



Tropical Storm Marty (Advisory #3A as of 8:00 a.m. EDT)

- Located 265 miles SW of Acapulco, Mexico
- Moving N at 6mph; maximum sustained winds 60 mph
- Additional strengthening is forecast during the next day or so
- Tropical storm-force winds extend outward up to 80 miles
- Tropical Storm Watch is in effect for Acapulco to Lazaro Cardenas

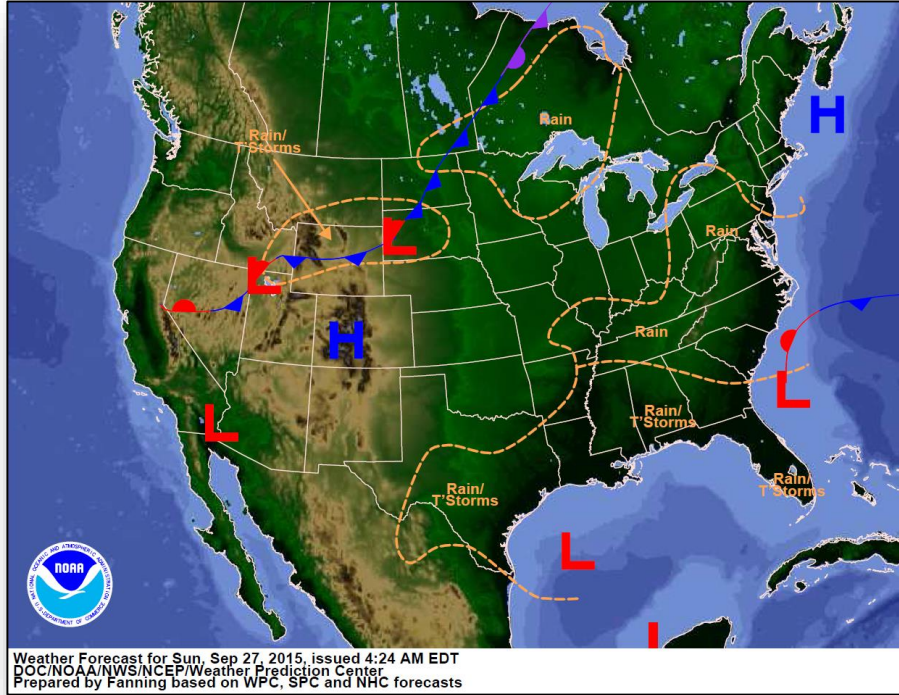
Central Pacific – Tropical Storm Niala



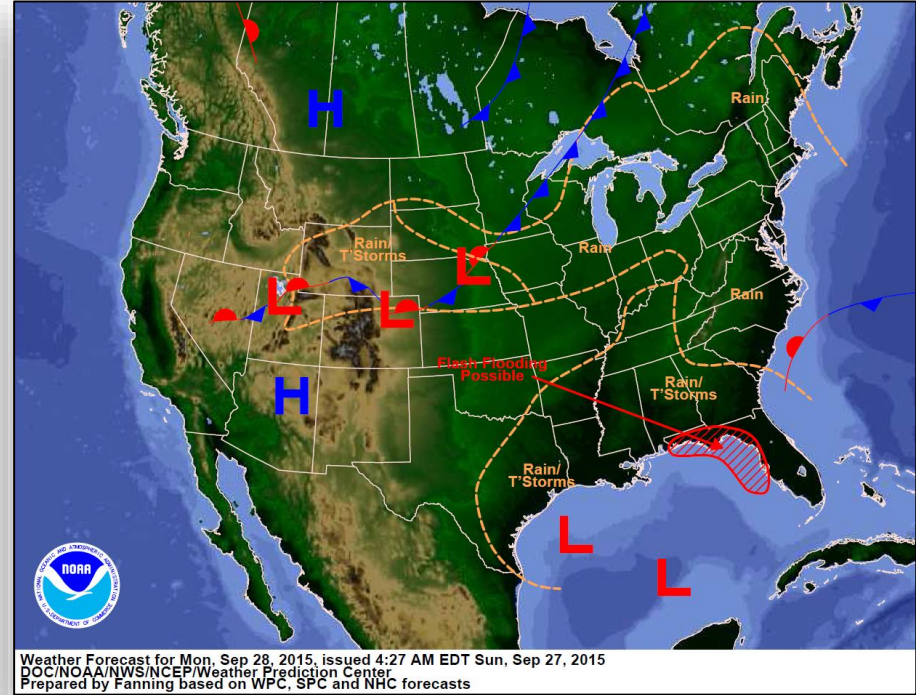
Tropical Storm Niala : (Advisory #10A as of 8:00 a.m. EDT)

- Located 245 miles SSE of Hilo, HI
- Moving WSW at 7 mph
- Maximum sustained winds 50 mph
- General motion expected to continue through Monday
- Gradually weakening is expected during next couple of days
- Tropical Storm-force winds extend outward 105 miles
- Tropical Storm Watch in effect for Hawaii County
- Storm total rainfall of 2 to 8 inches, with isolated maximum amounts up to 12 inches possible within the watch area; rainfall amounts could cause life-threatening flash floods

National Weather Forecast



Today

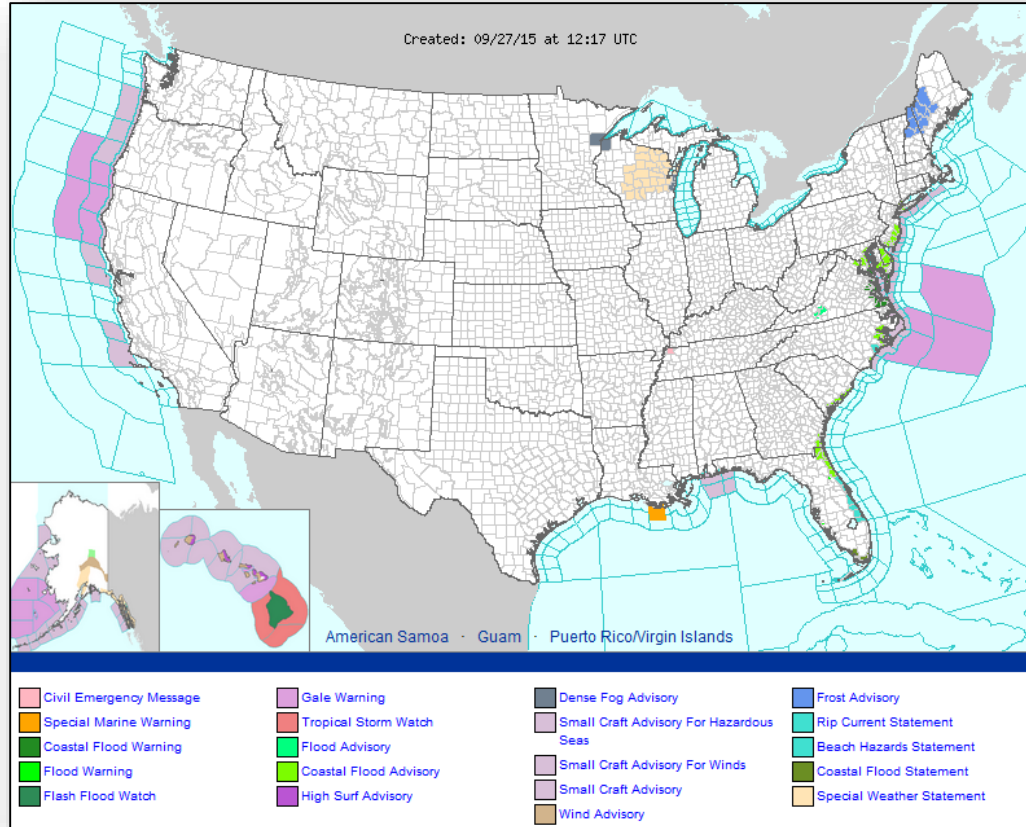


Tomorrow

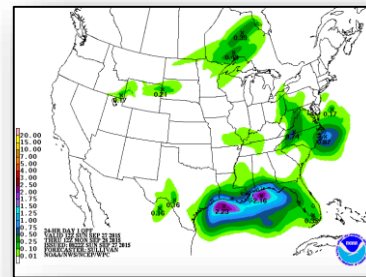
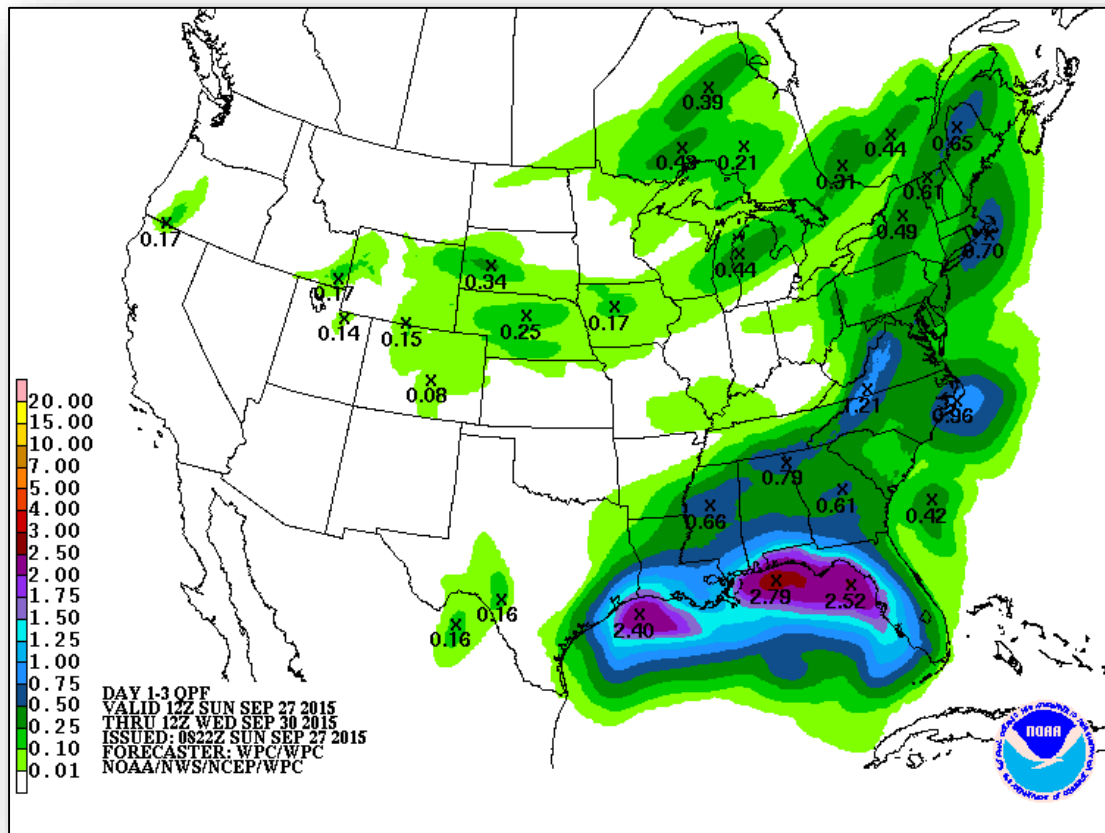
Active Watches/Warnings



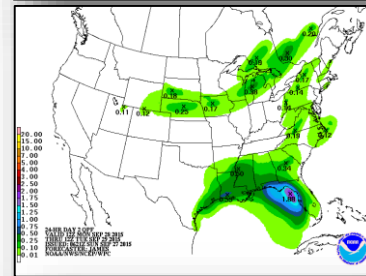
FEMA



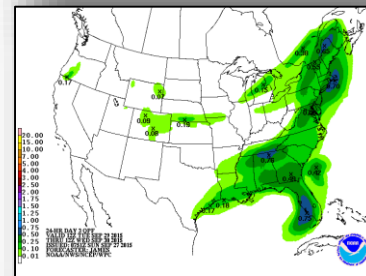
Precipitation Forecast, 1 – 3 Day



Day 1



Day 2

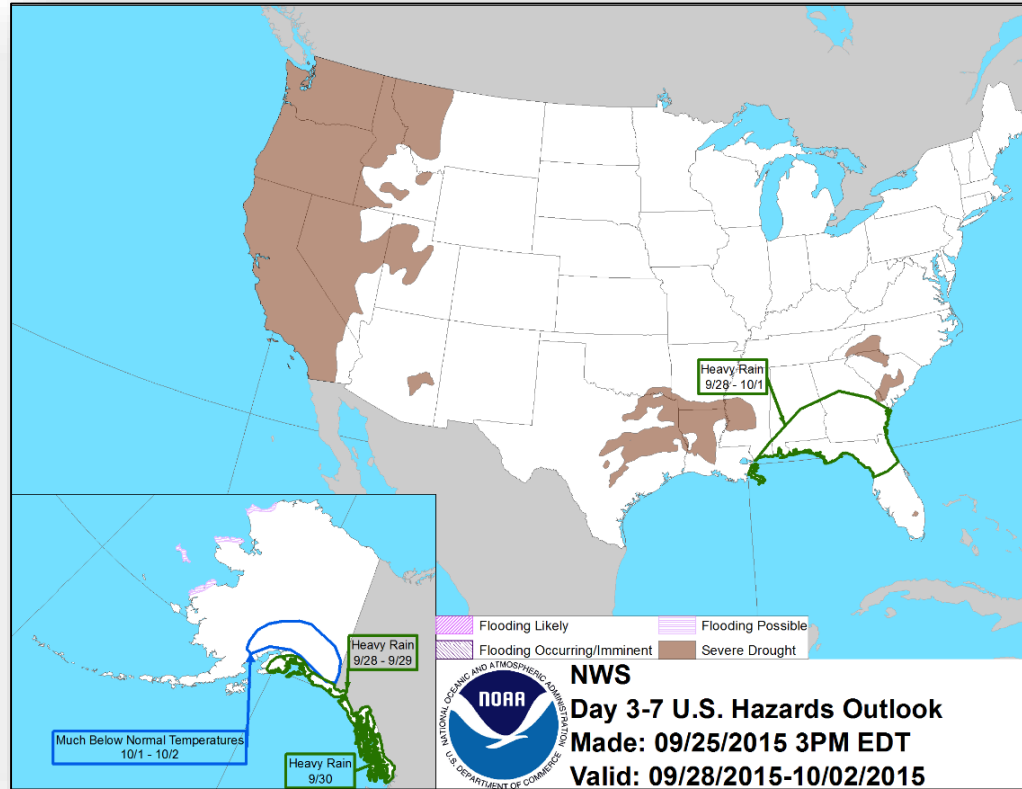


Day 3

Hazard Outlook, September 28 – October 2



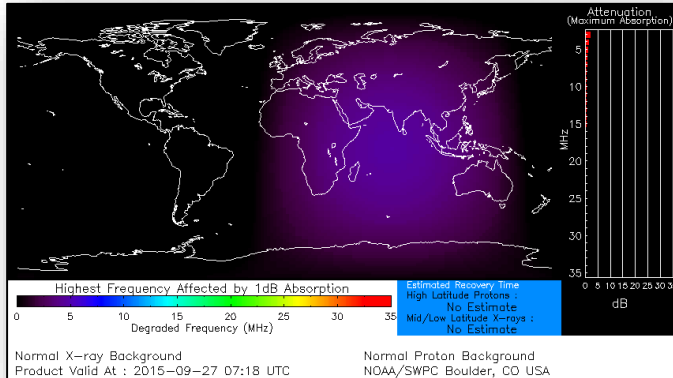
FEMA



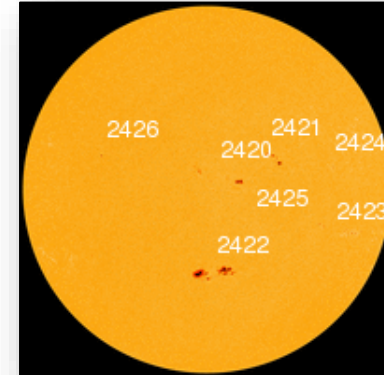
Space Weather

	Past 24 Hours	Current	Next 24 Hours
Space Weather Activity:	Minor	None	None
• Geomagnetic Storms	None	None	None
• Solar Radiation Storms	None	None	None
• Radio Blackouts	R1	None	None

HF Communication Impact



Sunspot Activity



Wildfire Summary

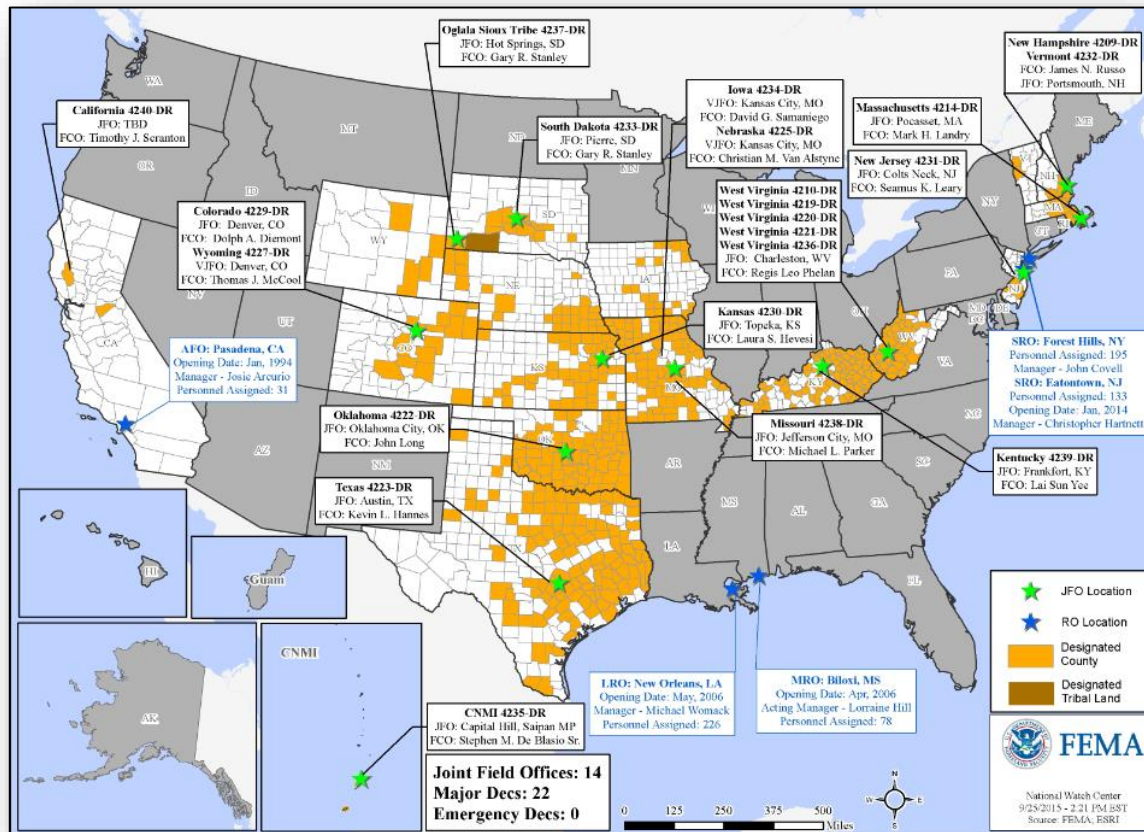


Fire Name (County)	FMAG #	Acres burned	% Contained	Evacuations (Residents)	Structures Threatened	Structures Damaged/ Destroyed	Fatalities/ Injuries
California							
Valley Fire (Lake, Napa, Sonoma Counties) FINAL	FEMA-5112-FM-CA	76,067	95%	Lifted	None	48 (41 homes) / 1,958 (1,280 homes)	4/4
Response: Region IX: Enhanced Watch Region IX: IMAT-2 & 1 LNOs deployed to CA CA EOC: Full Activation (Dayshift only) Regional EOCs: Fully Activated				Shelters: ARC & Independent shelters: 7 (+1) open with 330 (+59) occupants (ARC Midnight Shelter Report 26 Sep)			

Open Field Offices as of September 27



FEMA



Joint Preliminary Damage Assessments



Region	State / Location	Event	IA/PA	Number of Counties		Start – End
				Requested	Complete	
X	WA	Wildfires June 29, 2015 & ongoing	IA	5	5	9/14 – 9/18
			PA	5	0	9/21 – TBD
	Warm Springs Reservation (OR)	County Line 2 Fire August 12, 2015 & ongoing	PA	1	0	9/21 - TBD

FEMA Readiness – Deployable Teams /Assets



Deployable Teams/Assets									
Resource	Status	Total	FMC Available		Partially Available	Not Available	Detailed, Deployed, Activated	Comments	Rating Criterion
FCO		35	12	34%	0	1	22		OFDC Readiness: FCO Green Yellow Red Type 1 3+ 2 1 Type 2 4+ 3 2 Type 3 4 3 2
FDRC		9	5	56%	0	0	4		FDRC 3 2 1
US&R		28	25	89%	1	2	0	NY-TF1 (Yellow) – Sep 10-30 for Papal Visit Support PA-TF1 (Red) - Sep 21-24 for In-State Exercise; (Yellow) Sep 29 – Oct 5 for Cache Reconstitution NM-TF1 (Red) – Personnel shortages	• Green = Available/FMC • Yellow = Available/PMC • Red = Out-of-Service • Blue = Assigned/Deployed
National IMAT		3	3	100%	0	0	0		• Green: 3 avail • Yellow: 1-2 avail • Red: 0 avail (<i>Individual N-IMAT red if 50% of Section Chiefs and/or Team Leader is unavailable for deployment.</i>)
Regional IMAT		13	7	54%	0	0	6	<u>Deployed:</u> RII Deployed to NY for Papal Visit and UNGA RIII Deployed to PA for Papal Visit RVI (Team 2) Deployed to LA (Exercise) RVII Deployed to MO RVIII (Team 1) Deployed to SD & CO RIX (Team 1) Deployed to Guam/CNMI RIX (Team 2) Deployed to CA for wildfires RX Deployed to WA to supporting PDAs for wildfires	• Green: 7 or more avail • Yellow: 4 - 6 teams available • Red: > 8 teams deployed/unavailable <i>R-IMAT also red if TL Ops/Log Chief is unavailable & has no qualified replacement</i>
MCOV		59	40	68%	0	9	10	4 MCOVs deployed to DR-4240-CA 6 MCOVs enroute to DR-4240-CA	• Green = 80 – 100% avail • Yellow = 60 – 79% avail • Red = 59% or below avail • Readiness remains 95%

FEMA Readiness – National/Regional Teams



National/Regional Teams									
Resource	Status	Total	FMC Available		Partially Available	Not Available	Status	Comments	Rating Criterion
NWC		5	5	100%	0	0	Activated	Enhanced Watch (days only) supporting UNGA & Papal Visit (NSSE)	<ul style="list-style-type: none"> • Green = FMC • Yellow = PMC • Red = NMC
NRCC		2	344	89%	0	44	Not Activated		
HLT		1	N/A	N/A	0	0	Activated		
DEST							Not Activated		
RRCCs		10	9	90%	0	0	Activated	Region III – Level II (Partial Activation) supporting Papal Visit	
RWCs/MOCs		10	10	100%	0	0	Activated	Region II – Enhanced Watch (24/7) supporting Papal Visit Region III – Enhanced Watch (24/7) supporting Papal Visit Region IX - Enhanced Watch (24/7) supporting CA Wildfires	



FEMA

FEMA's mission is to support our citizens and first responders to ensure that as a nation we work together to build, sustain, and improve our capability to prepare for, protect against, respond to, recover from, and mitigate all hazards.